

1753. Human heart rhythm sensitivity to earth local magnetic field fluctuations

Abdullah Alabdulgade¹, Rollin Maccraty², Mike Atkinson³, Alfonsas Vainoras⁴,
Kristina Berškienė⁵, Vilma Mauricienė⁶, Algė Daunoravičienė⁷, Zenonas Navickas⁸,
Rasa Šmidaitė⁹, Mantas Landauskas¹⁰

¹Prince Sultan Cardiac Center, Al Ahsa, Saudi Arabia

^{2,3}HeartMath Institute, California, USA

^{4,5,6,7}Lithuanian University of Health Sciences, Kaunas, Lithuania

^{8,9,10}Kaunas University of Technology, Kaunas, Lithuania

⁴Corresponding author

E-mail: ¹kidsecho@yahoo.com, ²rollin@heartmath.org, ³mike@heartmath.org, ⁴alfavain@gmail.com,
⁵k.berškiene@gmail.com, ⁶vilma.mauriciene@lsmuni.lt, ⁷algevita@gmail.com, ⁸zenonas.navickas@ktu.lt,
⁹rasa.smidtaite@ktu.lt, ¹⁰mantas.landauskas@ktu.lt

(Received 28 April 2015; received in revised form 9 July 2015; accepted 11 September 2015)

Abstract. The sensitivity of human heart's rhythm to the fluctuations of Earth's local magnetic field is analyzed in this paper. Data collected during the long-term project of heart-rate variability (HRV) data from 17 female volunteers were used to correlate to measured fluctuations of Earth magnetic signals. Magnetic signals are collected utilizing the first global network of GPS time stamped detectors designed to continuously measure magnetic signals that occur in the same range as human physiological frequencies such as the brain and cardiovascular systems.

Keywords: heart rhythm, Earth magnetic field, magnetic field fluctuations.

1. Introduction

Every cell in our body is immersed in an environment of both external and internal fluctuating magnetic fields that can affect virtually every cell and circuit in biological systems to a certain degree, depending on the specific biological system and the nature of the magnetic fields. Numerous studies have shown that various physiological rhythms and global collective behaviors can be synchronized with the solar and geomagnetic activity; and that disruptions in these fields may have adverse effects on human health and behavior [1, 2].

The natural variation in the geomagnetic field in and around Earth has been reportedly involved in relation to several human cardiovascular variables. These include blood pressure [3] heart rate (HR), and heart rate variability (HRV) [4, 5]. Although there exist mounting evidences for such effects, they are far from being fully understood. Several studies have found significant associations between magnetic storms and decreased heart rate variability (HRV), indicating a possible mechanism linking geomagnetic activity with increased incidents of coronary disease and myocardial infarction [6-8]. One study that analyzed week long recordings found a 25 % reduction in the VLF rhythm during magnetically disturbed days as compared to quite days. The LF rhythm was also significantly reduced but the HF rhythms were not [9, 10]. A comparison of frequency ranges of oscillations in biological systems and geomagnetic activity shows that oscillations in neurogenic and myogenic structures have which have the same frequency as geomagnetic oscillations have the highest sensitivity to the geomagnetic activity [11]. General nonspecific adaptive stress-response (increasing of heart rate (HR), reductions in heart rate variability (HRV) and increased number of arrhythmic events has been observed in the periods of magnetic storms [12]. It has been suggested that disruptions in environmental magnetic fields can act as a "stressor" that can trigger changes in brain electrical activity, in the same way as other known stressors [13].

The most likely mechanism for explaining how solar and geomagnetic influences affect human health and behavior are a coupling between the human nervous system and resonating geomagnetic frequencies called Schumann resonances that occur in the Earth-ionosphere resonant cavity, Alfvén waves, and other very low frequency resonances. It is well established that these

resonant frequencies directly overlap with those of the human brain, and the cardiovascular and autonomic nervous systems [14]. Those interactions are proposed influence cardiovascular health. Individual sensitivity and the specific dynamic effects to the influences of fluctuations and resonances in the earth's magnetic field environment is the problem of particular importance, and developing methods to measure the sensitivity of individual's susceptibility is needed. This study therefore examines the different types and levels of sensitivity to earth generated magnetic fields.

2. Methods

2.1. Participants

From April 1, 2012, to August 31, 2012, a long-term project collected heart-rate variability (HRV) data from 17 female volunteers. All participants were employees of the Prince Sultan Cardiac Center in Hofuf Saudi Arabia (7 nursing staff, 6 housekeeping and, 4 from the research department). The average age was 32 ± 8 years, ranging from 24-49 years. Two participants experienced uncomfortable irritation at the ECG electrode sites and dropped out of the study. The participants signed informed consent form before taking part in the study and were free to withdraw from the study at any time.

2.2. Data collection

All participants underwent weekly 24-72 hour ambulatory HRV recordings with Firstbeat Bodyguard HRV recorders; the Bodyguard HRV recorder calculates the Inter-Beat Interval (IBI) from the ECG measured at 1000 samples per second. IBI data is stored locally in the device memory and uploaded to the studies FTP data collection site at the end of each weekly recording period. Participant's recordings were generally 72 hours in length and scheduled once a week over a 5 month period between April and the end of August 2012.

2.3. The registration of local magnetic field

The Global Coherence Initiative (GCI) system is the first global network of GPS time stamped detectors designed to continuously measure magnetic signals that occur in the same range as human physiological frequencies such as the brain and cardiovascular systems. Each site includes ultrasensitive magnetic field detectors (sensitivity 10^{-12} T) specifically designed to measure the magnetic resonances in the earth/ionosphere cavity, resonances that are generated by the vibrations of the earth's geomagnetic field lines and ultra-low frequencies that occur in the earth's magnetic field, all of which have been shown to impact human health, mental and emotional processes and behaviors. Each monitoring site detects the local alternating magnetic field strengths in 3 dimensions over a relatively wide frequency range (0.01-300 Hz) while maintaining a flat frequency response.

A technical problem prevented the first month's data from being recorded. Beginning May 9th the time varying magnetic field was continuously monitored to the end of August at the local GCI monitoring site near Hofuf Saudi Arabia. Local magnetic field B was calculated as the mean level of the magnetic field (picoTeslas (pT)) for every hour in the May 9th – Aug 31st monitoring period.

All HRV recordings were downloaded from the study's data collection FTP site to a PC workstation and analyzed using DADiSP 2002. Inter-Beat Intervals greater or less than 30 % of the mean of the previous 4 intervals were considered artifact and removed from the analysis record. Following this automated editing procedure recordings were manually reviewed by an experienced technician and, if needed, corrected. Daily recordings were processed in consecutive 5 minute segments. Any 5 minute segment with >10 % of the IBIs either missing or removed in editing were excluded from analysis.

The Mean IBI was calculated for every hour in the recording and time synchronized with the local hourly mean magnetic field (B) measurements

2.4. Mathematical analysis

For the evaluation of HRV which reflects ANS activity, individual sensitivity to the local geomagnetic field a new nonlinear analysis methods - second order matrix analysis - were used.

Let two synchronous time series $S_1 = (x_n; n = 0, 1, 2, \dots, m)$ and $S_2 = (y_n; n = 0, 1, 2, \dots, m)$ are associated with the exploratory complex system. Let x_n and y_n ($n = 0, 1, 2, \dots, m$) be non-random values with low-level noise added which has no particular impact on further calculations. Therefore algebraic methods can be used to analyze time series S_1 and S_2 . The algorithm may be divided into several steps [3]:

1 step. The values of S_1 and S_2 are normalized and modified time series $\hat{S}_1 = (\hat{x}_n, n = 0, 1, 2, \dots, m)$ and $\hat{S}_2 = (\hat{y}_n, n = 0, 1, 2, \dots, m)$ are obtained:

$$\hat{x}_n := \frac{x_n - x_{\min}}{x_{\max} - x_{\min}}, \quad (1)$$

$$\hat{y}_n := \frac{y_n - y_{\min}}{y_{\max} - y_{\min}}, \quad (2)$$

where x_{\min} and x_{\max} (y_{\min} and y_{\max}) are theoretical boundaries, e.g. physiological limits, and if these limits are unknown, then $x_{\min} = \min_{n=0,1,\dots,m} x_n$, $x_{\max} = \max_{n=0,1,\dots,m} x_n$, $y_{\min} = \min_{n=0,1,\dots,m} y_n$, $y_{\max} = \max_{n=0,1,\dots,m} y_n$. It is clear that in both cases $0 \leq \hat{x}_n, \hat{y}_n \leq 1$ for all $n = 0, 1, 2, \dots, m$.

Step 2. Sequence of second order matrices $\hat{S}_3 = (A_n, n = 1, 2, \dots, m - 1)$ are formed:

$$A_n := \begin{bmatrix} \hat{x}_n & \hat{x}_{n+1} - \hat{y}_{n+1} \\ \hat{x}_{n-1} - \hat{y}_{n-1} & \hat{y}_n \end{bmatrix}. \quad (3)$$

Step 3. Sequence of discriminants of matrices A_n are calculated $\hat{S}_4 = (\text{dsk}A_n, n = 1, 2, \dots, m - 1)$ [4]:

$$\text{Dsk}(x_n, y_n) := \text{dsk}A_n = (\hat{x}_n - \hat{y}_n)^2 + 4(\hat{x}_{n-1} - \hat{y}_{n-1})(\hat{x}_{n+1} - \hat{y}_{n+1}). \quad (4)$$

Sequence of discriminants has important diagnostical properties to evaluate changes in described complex system. Let eigenvalues of matrix A_n are λ_n and μ_n :

$$\lambda_n := \frac{1}{2}(x_n + y_n + \sqrt{\text{dsk}A_n}), \quad (5)$$

$$\mu_n := \frac{1}{2}(x_n + y_n - \sqrt{\text{dsk}A_n}), \quad (6)$$

where $n = 1, 2, \dots, m - 1$, $\sqrt{\text{dsk}A_n} \geq 0$ if $\text{dsk}A_n \geq 0$ and $\sqrt{\text{dsk}A_n} = i\sqrt{|\text{dsk}A_n|}$ if $\text{dsk}A_n < 0$ (i denotes imaginary unit). Eqs. (5) and (6) yield $\lambda_n - \mu_n = \sqrt{\text{dsk}A_n}$ and from this equality follow several properties:

1) The discriminant represents peculiarities of local variability of the processes.

2) If discriminant values are equal to zero $\text{dsk}A_n \equiv 0$ ($\hat{S}_4 = (0, 0, \dots, 0)$) it is clear that $\lambda_n = \mu_n$ for all $n = 1, 2, \dots, m - 1$. The complexity of analysed system is low (zero complexity level).

3) If discriminant values are equal to constant $\text{dsk}A_n \equiv c$ ($\hat{S}_4 = (c, c, \dots, c)$), then the difference (in quality and quantity) between time series $S_1 = (x_n; n = 0, 1, 2, \dots, m)$ and $S_2 = (y_n; n = 0, 1, 2, \dots, m)$ remain the same for all $n = 1, 2, \dots, m - 1$ and the system remains

invariant and static.

4) If \hat{S}_4 is a periodic sequence $\hat{S}_4 = (a, b, c, a, b, c, \dots, a, b, c)$, then two time series S_1 and S_2 describe two simple harmonic motion having the same frequency but different phase. In this case the system is in an ideal harmonic routine. The time of one period should be neither too short (complex system would be too primitive), nor too long (in this case system would be rather chaotic).

Let us notice, that if \hat{S}_4 has quite high variability level, then the analysed dynamical system has high complexity level and from changes in the sequence of $dskA_n$ certain assumptions about system evolution can be proposed.

Cardiovascular system sensitivity to the local geomagnetic field was evaluated using methods based on second order matrix theory. Data points of $(x_n; n = 0, 1, 2, \dots, m)$ represent heart inter-beat-intervals (*IBI*) and $(y_n; n = 0, 1, 2, \dots, m)$ represent local Earth magnetic field (*B*) parameters. RR intervals were normalized using physiological limits $x_{\min} = 300$ milliseconds (ms) and $x_{\max} = 1500$ ms. Limits for the local magnetic field were calculated $y_{\min} = \min_{n=0,1,\dots,m} y_n$, $y_{\max} = \max_{n=0,1,\dots,m} y_n$. Discriminant $Dsk(IBM, B)$ was calculated for each pair of the same time data points of parameters *IBI* and *B*. Besides discriminants, another sensitivity parameter *S* was introduced. $S(B; Dsk(IBM, B))$ reflects cohesion between local Earth magnetic field and discriminants between *IBI* and *B*. Sensitivity was measured by the angle between regression line and discriminant axes:

$$S = \frac{B - b}{Dsk(IBM, B)}, \tag{7}$$

where *S* and *b* are the coefficients of linear regression between $Dsk(IBM, B)$ (as *x* axis) and *B* (as *y* axis).

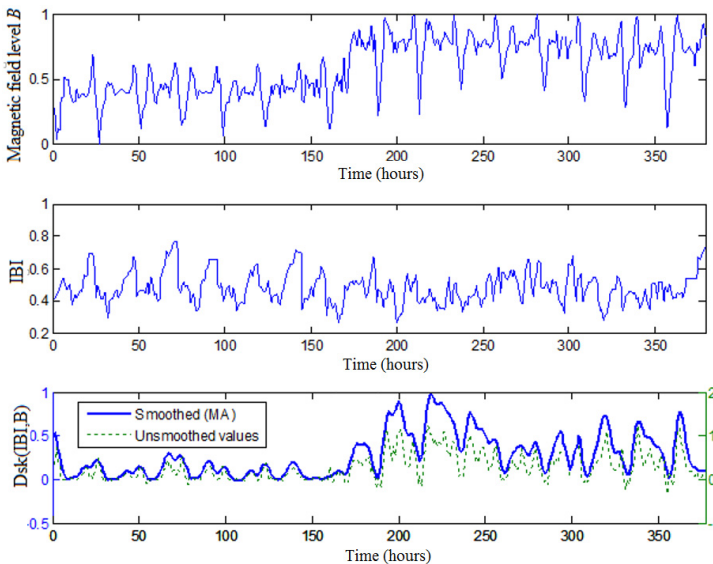


Fig. 1. The synchronous data of one participant: local magnetic field level, *IBI* fluctuations at the same time, $Dsk(IBM, B)$

3. Results

For all the studied subjects *IBIs* and magnetic field parameters, variations were averaged each hour's period. In Fig. 1 data of one investigated female is presented – it clearly stands out day and

night both in *IBI* and *B* activity – higher on the day and lower at night.

At about 180 hours of observation, the local magnetic field intensity increased and an obvious shift in the range of fluctuations of *IBIs* could be seen. This change is shown in Fig. 2 which presents the *Dsk* variation (Time – 180 h). Those variations were placed into phase plane. Personal sensitivity *S* (Eq. (7)) to magnetic field changes (time scale 1hour) was calculated for every person. The example of sensitivity calculations of one investigated female is given in Fig. 2.

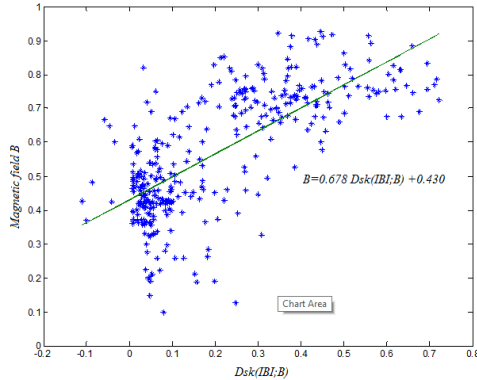


Fig. 2. The dependence of *Dsk(IBM; B)* and local magnetic field *B*

Different people have different sensitivity to local magnetic field. We have sorted the coefficients of sensitivity *S* and *b* in decreasing order – we could identify the people, who are the most sensitive to local magnetic field fluctuations and those, whose sensitivity is less. Also, we calculated the average sensitivity of the whole group. The results are presented in the Fig. 3.

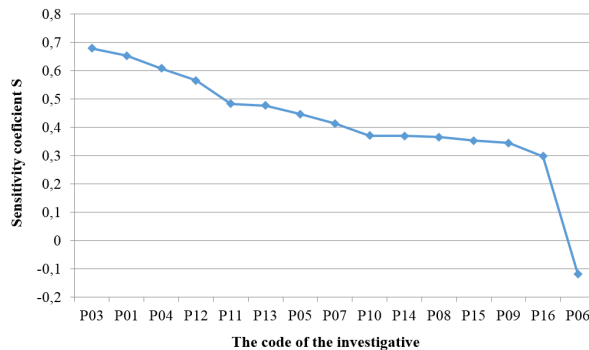


Fig. 3. Heart Rhythm sensitivity to Earth local magnetic field fluctuations in descending order of all investigated persons

One participant had a negative sensitivity coefficient to the local magnetic field fluctuations (Fig. 3). Naturally, the question rises, – what was the reason for such character of sensitivity *S*. We have explored in details the data of inter-beat-intervals. The short episode of inter-beat-intervals for this person is presented in Fig. 4.

It could be, that existing arrhythmia, big fluctuations in *IBI* (Fig. 4) in person can cause the changes in human – Earth interconnection and rising up health problems for this person.

Participant age may be an important factor in human sensitivity to changes in the Earth’s magnetic field. Therefore, we calculated the correlations between sensitivity coefficient *S* and age. The correlation was not significant ($r = 0.107$) – so it appears that age (in studied persons age range 20-50y) is not an important factor of sensitivity to local magnetic fields.

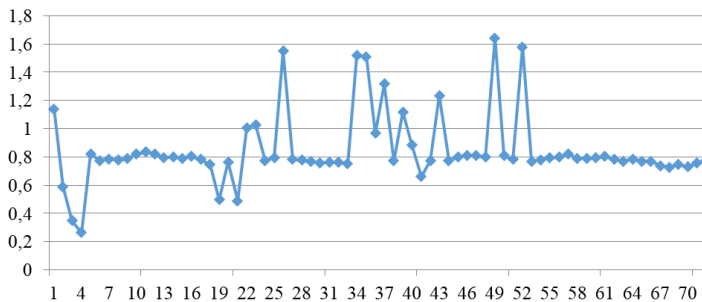


Fig. 4. Irregular sequence of *IBI* of the participant with very small sensitivity to local magnetic field fluctuations

4. Discussion

Looking to original data and results of proposed matrix analysis for personal sensitivity to local Earth magnetic field fluctuations we can see, that every person has its own character of Human – Earth interconnection. In literature we can find a lot of interpretations, that ill person is more sensitive to the changes of magnetic field, or Moon phases or other climate condition changes. Our results can suggest that, just on contrary, person with some diseases, especially in heart, can lose its sensitivity to the changing surrounding; it means that adaptation abilities for such person are deceased. Abrupt changes in surrounding space without adequate adaptation can evoke big stress in person and just this stress can provoke unpredictable effects in organism itself – swinging in arterial blood pressure, stroke or myocardial infarction. Proposed methodology to evaluate personal sensitivity to local Earth magnetic field should allow studying dynamic of personal sensitivity and more exactly predict possible health disturbances.

5. Conclusions

The disturbances in the heart function can decrease the sensitivity to local Earth magnetic field and this can influence new problems in human-Earth interconnection and cause different health problems for the person. The proposed measure of human sensitivity to Earth magnetic field *S* can help to evaluate personal possibilities to develop health problems.

Elaboration of the true mechanism of the delicate relationship between human heart rhythms and geomagnetic frequencies of the Earth is an important problem with many implications. The understanding of these relationships could full fill the existing gap of knowledge which could conceivably explain the persistent high morbidities and mortalities of cardiovascular disease in humans regardless of race, ethnicity and geographical location.

References

- [1] **Stoupe E. G., Tamoshiunas A., Radishauskas R., Bernotiene G., Abramson E., et al.** Neutrons and the plaque: AMI (n-8920) at days of zero GMA/high neutron activity (n-36) and the following days and week. *Journal of Clinical and Experimental Cardiology*, Vol. 2, Issue 1, 2011.
- [2] **Stoupe E. G., Tamoshiunas A., Radishauskas R., Bernotiene G., Abramson E., et al.** Acute myocardial infarction (AMI) and intermediate coronary syndrome (ICS). *Health*, Vol. 2, Issue 2, 2010, p. 131-136.
- [3] **Stoupe E. G., Wittenberg C., Zabłudowski J., Boner G.** Ambulatory blood pressure monitoring in patients with hypertension on days of high and low geomagnetic activity. *Journal of Human Hypertension*, Vol. 9, Issue 4, 1995, p. 293-294.
- [4] **Baevsky R. M., Petrov V. M., Chernikova A. G.** Regulation of autonomic nervous system in space and magnetic storms. *Advances in Space Research*, Vol. 22, Issue 2, 1998, p. 227-234.
- [5] **Cornelissen G., McCraty R., Atkinson M., Halberg F.** Gender Differences in Circadian and Extra-Circadian Aspects of Heart Rate Variability (HRV). 1st International Workshop of the TsmTsoom Institute, Krakow, Poland, 2010.

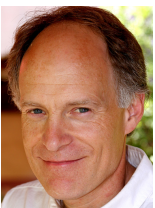
- [6] **Malin SRCaS B. J.** Correlation between heart attacks and magnetic activity. *Nature*, Vol. 277, 1979, p. 646-648.
- [7] **Stoupel E. G.** Sudden cardiac deaths and ventricular extrasystoles on days of four levels of geomagnetic activity. *Journal of Basic and Clinical Physiology and Pharmacology*, Vol. 4, Issue 4, 1993, p. 357-366.
- [8] **Villoresi G., Ptitsyna N. G., Tiesto M. I., Iucci N.** Myocardial infarct and geomagnetic disturbances: analysis of data on morbidity and mortality. *Biophysics*, Vol. 43, Issue 4, 1998, p. 623-632, (in Russian).
- [9] **Otsuka K., Cornélissen G., Weydahl A., Holmeslet B., Hansen T. L., Shinagawa M., et al.** Geomagnetic disturbance associated with decrease in heart rate variability in a subarctic area. *Biomedicine and Pharmacotherapy*, Vol. 55, 2000, p. 51-56.
- [10] **Cornelissen G., Halberg F., Breus T., Syutkinac E. V., Baevsky R., Weydahl A., Watanabe Y., Otsuka K., Siegelova J., Fiser B., Bakken E. E.** Non-photic solar associations of heart rate variability and myocardial infarction. *Journal of Atmospheric and Solar-Terrestrial Physics*, Vol. 64, 2002, p. 707-720.
- [11] **Zenchenko T. A., Rekhtina A. G., Poskotinova L. V., Zaslavskaya R. M., Goncharov L. F.** Comparative analysis of the response of microcirculation parameters and blood pressure to geomagnetic activity in healthy people. *Bulletin of Experimental Biology and Medicine*, Vol. 152, Issue 4, 2012, p. 402-405.
- [12] **Gurfinkel Y., Breus T., Zenchenko T., Ozheredov V.** Investigation of the effect of ambient temperature and geomagnetic activity on the vascular parameters of healthy volunteers. *Open Journal of Biophysics*, Vol. 2, Issue 2, 2012, p. 46-55.
- [13] **Carrubba S., Frilot C., Chesson A. L. Jr., Marino A. A.** Numerical analysis of recurrence plots to detect effect of environmental-strength magnetic fields on human brain electrical activity. *Medical Engineering and Physics*, Vol. 32, Issue 8, 2010, p. 898-907.
- [14] **McCraty R., Deyhle A.** *The Global Coherence Initiative: Investigating the Dynamic Relationship between People and Earth's Energetic Systems in Bioelectromagnetic and Subtle Energy Medicine*, Second Edition, 2015.
- [15] **McCraty R., Childre D.** Coherence: bridging personal, social and global health. *Alternative Therapies in Health and Medicine*, Vol. 16, Issue 4, 2010, p. 10-24.
- [16] **McCraty R., Deyhle A., Childre D.** The global coherence initiative: creating a coherent planetary standing wave. *Global Advances in Health and Medicine*, Vol. 1, Issue 1, 2012, p. 64-77.



Abdullah Alabdulgader is the senior congenital cardiologist and invasive electrophysiologist; World Gold Medal Awardee (WOSC0-2012); member of the Royal Colleges of Physicians in UK (London-Edinburgh-Glasgow) and board certified in Pediatric and Adolescent Medicine; founder and President of the International Conference in Advanced Cardiac SCIENCES (King of Organs).



Rollin McCraty, Ph.D. is Director of Research of the HeartMath Research Center at the Institute of HeartMath. He is also a Professor at Florida Atlantic University. His research interests include the physiology of emotion, intuition and optimal functioning. His work focuses on the mechanisms by which emotions influence cognitive processes, behavior, and health as well as the global interconnectivity between people and the Earth's energetic systems.



Mike Atkinson is the Research Center laboratory manager. He has extensive experience gathering, processing and performing statistical analysis of a wide range of psychophysiological data, co-holder of three patents related to physiological coherence monitoring used in organizational, educational and health care settings. He is co-author of several psychological surveys used to assess stress, emotions and organizational effectiveness; he has played a key role in many laboratory and field research studies examining the effects of stress and emotions on bodily systems, including heart-brain interactions and cognitive performance.



Alfonsas Vainoras graduated Kaunas Medical Institute, faculty of Medicine, Department of Biophysics in 1970, and is a full Professor there since 2003. His research interests cover the development of new ECG analysis systems based on human organism complexity, investigation of interactions of different fractal levels in human organism.



Kristina Berškienė received the Ph.D. degree in 2010 from Institute of Biomedical Engineering, Kaunas University of Technology, Lithuania. Now she is an Associated Professor at Lithuanian University of Health Sciences, Institute of Sports. Scientific interest area – applications of complex systems theory in electrocardiology.



Vilma Mauricienė received Ph.D. (Biomedicine Sciences) in 2005. Now she works at Lithuanian University of Health Sciences, Institute of Sports. Main research interests: diagnostic of musculoskeletal system's peculiarities and investigation of healthy movement patterns.



Algė Daunoravičienė is an Associated Professor since 2008. She works at Lithuanian University of Health Sciences, Institute of Sports. Her current research interests are diagnostic of human functionality and studies of adequate physical workloads effects to its state.



Zenonas Navickas is a full Professor at Kaunas University of Technology since 2002. His research interests cover the development of close-form solutions to differential equations, Prony analysis, application of algebraic matrix analysis in ECG investigation.



Rasa Šmidtaitė is Lecturer at Kaunas University of Technology, Department of Applied Mathematics since 2006. Her research interests cover the application of algebraic matrix analysis to nonlinear dynamical systems.



Mantas Landauskas received the M.Sc. degree in mathematics in 2011 from the Kaunas University of Technology, Lithuania. He is currently an Assistant Lecturer at the Department of Mathematical Modelling. His research is mostly about controlling nonlinear dynamical systems (discrete or continuous) using computational techniques based on ranks of Hankel matrices (H-ranks).