

1652. Modal analysis of the triple-tower twin-span suspension bridge in deck unit erection stage

Hui Jin¹, Xiaoyi Guo², Libin Wang³, Dongming Feng⁴

¹Jiangsu Key Laboratory of Engineering Mechanics, School of Civil Engineering, Southeast University, Nanjing 210096, China

^{2,3}School of Civil Engineering, Nanjing Forestry University, Nanjing, Jiangsu, 210037, China

⁴Columbia University, Department of Civil Engineering and Engineering Mechanics, New York, NY 10027, USA

¹Corresponding author

E-mail: ¹jinhui@seu.edu.cn, ²guoxiaoyi924@163.com, ³jhwlb@163.com, ⁴df2465@columbia.edu

(Received 8 November 2014; received in revised form 20 April 2015; accepted 5 May 2015)

Abstract. Modal analysis of large span suspension bridge in different construction stages has to be carried out for the aerodynamic instability analysis. Based on the finite element (FE) model of a triple-tower twin-span (TTTS) suspension bridge in the completed stage, the FE models of the tower-cable-deck system corresponding to 0 %, 5 %, 10 %, 20 %, 30 %, and 40 % deck units erection stage are established respectively by a backward dismantling method. Then, the dynamic characteristics of each of the tower-cable-deck systems are analyzed to study the modal properties of TTTS suspension bridge in various deck erection stages. The results demonstrate that the natural frequencies of each erection stage are closely distributed in the low-order range. In the beginning of the deck units erection stage, the tower-cable-dominated modes are the primary modes and the deck-dominated modes come to next. Due to the strong interactions between deck units and the cables, both the in-plane and out-of-plane vibrations of cables would excite the swing, lifting or torsional modes of the deck units. Both the in-plane and out-of-plane modes including in-phase and out-of-phase modes of the two main cables in the same span or symmetry and anti-symmetry modes of the neighboring-span cables as well as their corresponding combinations can be classified into groups. With more deck units erected, the main girder is built up gradually, and thus the frequencies of deck-dominated mode would arise. The different frequency variations result in the modal crossover phenomena, which reflect the instability of the dynamic characteristics during the long deck erection period. At last, the aerodynamic stability of the suspension bridge is checked at each early erection stage, and a wind ropes application for the aerodynamic stability enhancement is investigated. The study of dynamic characteristics provides a reference for the wind-resistance analysis of the TTTS suspension bridge during the deck units erection stage.

Keywords: tower-cable-deck system, FE model, modal combination, frequency variation, modal crossover.

1. Introduction

Recently, to meet the need to span wide-ranging rivers, a new era for the multi-tower suspension bridge has begun. In China, the first two triple-tower suspension bridges, the Taizhou Yangtze River Bridge and Ma'an Shan Yangtze River Bridge, with twin span of 1080 meters each, have been open to traffic. The first triple-tower four-span suspension bridge, the Yingwuzhou Yangtze River Bridge, will be finished at the end of this year. The New Millennium Bridge in Korea, and the Chacao Channel Bridge in Chile, which will be expected to be completed in 2018 and 2019 on scheduler respectively, are also triple-tower suspension bridges.

Because no practical suspension bridges with twin spans longer than 1000 meter had been come into use in the early days, most research still focus on the concept design period [1-5]. There are not thorough studies on all mechanical aspects of this kind of bridges until Taizhou Yangtze River bridge, Ma'an Shan Yangtze River bridge and New Millennium Bridge began to be designed or erected [6-10]. Moreover, there are few researches on the dynamic characteristics in the

long-period construction stage of twin-span suspension bridges [11-16].

In reality, the most commonly used erection method for suspension bridge is that starting from the midspan and extends symmetrically toward the two pylons. In this way the prefabricated girder segments is transported on a barge to the site, and lifted into position one module after another. Initially, the up lifted segments were temporarily connected with hinges, which actually transferred the lateral and torsional stiffness but not the vertical bending stiffness to fit the large configuration change in each period. Once all segments were in position, they were welded together.

By this sequence, the two working fronts are free of support, and, all the joints between any two neighboring deck units are not fully made, all these factors result in the overall stiffness of the structure is significantly smaller than that of the bridge in service conditions. However, the suspension bridge is usually more suitable to bridge straits, which is inevitably exposed to frequent adverse typhoons or hurricanes. It is clear that the conditions during bridge erection are often less favorable than those of the final state due to the significant reduction of the overall stiffness of the bridge girder before closing. Therefore, the aerodynamic behavior of any suspension bridge during construction is of great concern to the successful completion of the bridge.

Many studies focused on aeroelastic stability limits of suspension bridges during deck erection for the safety of the construction for two-tower suspension bridge [11, 17-18], in China, the “Wind-resistant Design Specification for Highway Bridge”, a design manual, has already concluded the fundamental frequency estimation formula and the wind-resistance stability checking for two-tower suspension bridge [19]. According to the design manual, for the conventional double-tower suspension bridge, there exists the most unfavorable state in terms of the aerodynamic stability when the bridge girders are erected 10 % to 40 % of all its segments. However, for multi-tower bridge, a guide specification for reference is inexistence.

In order to predict the wind-induced dynamic response and stability of this multi-tower bridge type, the fundamental vibration frequencies and mode shape following different erection sequences has been produced and compared to understand how the dynamic properties vary during erection. Flutter analysis is then performed using the theoretical formula and finally a wind rope control is recommended for the wind stability improvement.

2. Finite element modeling

2.1. Features of TTTS suspension bridge

Ma’anshan Bridge spans over the Yangtze River in Ma’anshan city, Anhui, China, with a span arrangement of 360+2×1080+360 m, as shown in Fig. 1.

The two main cables of 35 m apart are made of galvanized high-tensile steel wires with a diameter of 5.2 mm and an ultimate tensile strength of 1670 MPa by prefabricated parallel-wire strands (PPWS). Each main cable consists of 154 strands and each strand weight 49 ton with 91 wires built into it. The outer diameter of each main cable is approximately 0.688 m. The double hanger rope is also made of high-tensile galvanized parallel wire bundles. Each hanger is composed of 109 parallel steel wires with a diameter of 5.0 mm and an ultimate tensile strength of 1670 MPa. The spacing between two adjacent hangers is 16.0 m while the separation distance from tower center to the nearest hanger is 20.0 m.

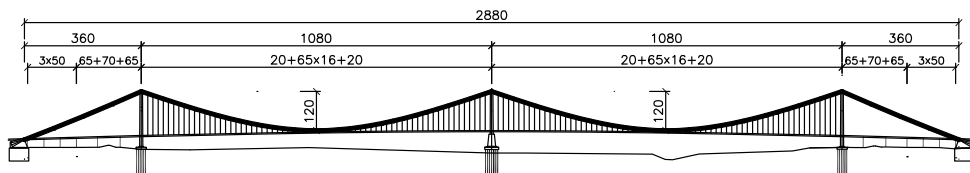


Fig. 1. General layout of Ma’anshan Yangtze River bridge (unit: m)

The mid-tower and two side towers are portal-type frames with two cross-beams installed between two tower legs. The height of tower is 178.8 m measured from the top surface of the pile cap to the pylon top. Besides 10.5 m decoration segment part at top, the 127.8 m steel upper part from the bottom of the saddle downwards of the mid-tower is connected to the 40.5 m lower concrete part by the steel-concrete connection joint segments just beneath the bottom steel cross-beam. The center-lines of the tower legs are 35 m apart at the top tower increasing to 43.5 m at the pile cap. The width of the leg is constant at 6 m in the tower plane, but in the plane of bridge tapers from 11 m at top steel-concrete joint section to 7 m at the top tower. For the pre-stressed reinforced concrete bottom tower, the widths reduces from 12 m in tower plane and 25 m in bridge plane at the pile cape to 9.2 m and 17 m at the joint section, and the corresponding thickness is 1.6 m and 2.0 m of the box section respectively. As for the side towers, the width of the legs are both constant at 6 m in tower plane and at 8 m in the plane of bridge, the other sizes is nearly the same with those of the mid-tower.

A flat streamlined steel box deck is chosen as the stiffening girder of the bridge, as shown in Fig. 2. The top and bottom inclined webs are set in deck to constituting a wind guide for achieving aerodynamic stability. The overall width of deck is 38.5 m and the deck depth is 3.5 m but 6.0 m near the fixed joint between deck and the lower cross-beam of the tower. The length of standard deck unit is 16 m long with five diaphragms spaced at 3.2 m wide. The standard diaphragm plate is a truss made up of the angle steel L125×125×12 m by welding gusset plate but a plank at the joint between tower and deck. The thickness of top flange in the standard box deck unit is 14 mm and the bottom flange thickness is 10 mm, but 20 mm and 24 mm respectively near mid-tower. The closed U ribs are set into the top and bottom flange.

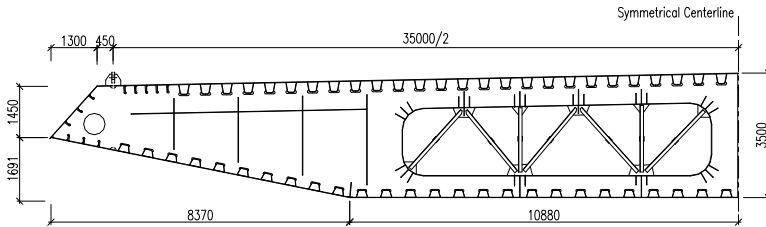


Fig. 2. Standard section of steel box deck of Ma'anshan Yangtze River bridge (unit: mm)

2.2. Finite element modeling

MIDAS/Civil finite element software package is used to simulate the deck erection process of the tower-cable-deck system. The FE model of the TTTS suspension bridge in finished stage is established by the precise balance analysis function for suspension bridges in this software, as shown in Fig. 3. In this model, the stiffening girder and towers are modelled by using the three dimensional Timoshenko beam element. All main cables and hangers are divided into truss elements with initial tensile force. The connections between the stiffening deck units aligned at the center line of top flange and the hangers are simulated with the rigid arm elements, creating the fish-bone finite element model. The model has a total of 1177 elements and 913 nodes. When the weight of the deck is added stepwise to the main cable, large displacements and changes of curvature occur, and the joints between the segments of decks are therefore initially left open to avoid excessive bending of the girder sections. Therefore, each connection between the neighbor segments is modelled as hinge joints in the FE model, while in finished stage each opening is closed thus all segments are lined up to a girder. The elastic connections between the stiffening girder node and the near pylon node are used to simulate the girder set on the cross-beam of main tower.

For the Ma'anshan Yangtze River suspension bridge the girder is erected from the midspans of the two main spans towards the pylons symmetrically. The tower-cable-deck system of the 40 % erection progress is shown in Fig. 4. To simulate the segments lifting procedure in finite element

model, the backwards method is used by which the supports, the stiffening girder units and all hangers are dismantled step by step at a reverse construction procedure from the final stage FE model to get FE model in each erection stage. Furthermore, the lumped masses for each of the four pairs of the lifting gantries, estimated to be 2.5×10^5 kg, was add to the corresponding nodes in the FE model.

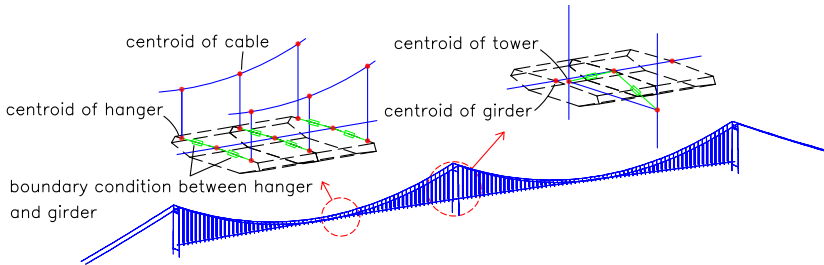


Fig. 3. FE model for Ma'anshan Yangtze River bridge

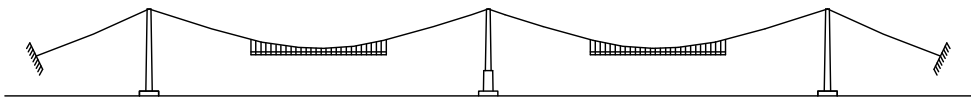


Fig. 4. The 40 % erection state of the stiffening girder for Ma'anshan Yangtze River bridge

3. Modal shape analysis in deck units erection stage

For the conventional double-tower suspension bridge, as the Guide [19] pointed out, there exists the most unfavorable state in terms of the aerodynamic stability when the bridge girders are erected 10 % to 40 % of all its segments. As for the TTTS suspension bridge, without guide specifications for reference, studies have to be conducted. Thus, in the following sections, the evolution of the modal characteristics corresponding to 0 %, 5 %, 10 %, 20 %, 30 %, and 40 % deck units erection stage, respectively, is analyzed.

3.1. Local cable-dominated modes of vibration

The primary modes of the tower-cable-deck system when 10 % segments were lifted are listed in Tables 1 to 5, it is clearly that the uncoupling vibration modes can be reasonably separated into in-plane and out-plane modes. Most of the modes are strong related to the vibration of main cables thus can be called cable-dominated modes. The in-plane modes (in-phase and out-of-phase of the two main cables in the same span, symmetry and anti-symmetry of the neighboring-span cables, and their corresponding combinations) can be classified into groups. Specifically, every four vibration modes goes into one group. For instance, the No. 1 to No. 4 modes in Table 1 can be divided into a group in which the No. 1 is in-phase and double spans symmetry mode. The No. 2 is double spans anti-symmetry mode. But the No. 3 and No. 4 are both out of phase modes with one symmetry and the other anti-symmetry. Moreover, in each group, the in-phase vibration modes of two cables lead to the lift mode of decks such as the No. 1 and No. 2 mode in Table 1, and the out-of-phase modes excite the torsional mode of decks as in the cases of the No. 3 and No. 4 mode in the vertical direction.

The out-of-plane vibration sway modes are listed in Table 2, it is obvious that every four modes can also be divided into one group. In the lateral direction, the in-phase vibration modes between the two main cables induce the lateral sway modes of the suspended deck units while the out-of-phase modes excite the pure cable lateral sway modes without deck motions. It is clearly that, from Tables 1 and 2, the vibration modes of the main cables are restricted by the stiffening decks erected. Because of the interaction between the deck units and the main cables, the vibration of the main cable can result in corresponding motions of the deck units and in turn increasingly

erected deck units would be expected to gradually change the modal characteristics of the main cable. The modal characteristics of the temporary tower-cable-deck system are unstable as the construction progresses.

Table 1. In-plane vibration modes of cables after 10 % deck erection


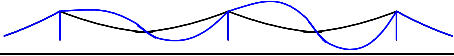
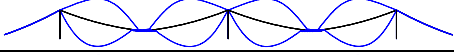
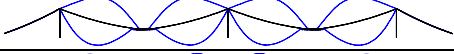

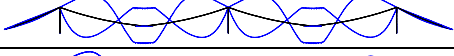
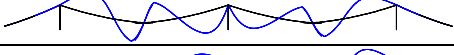

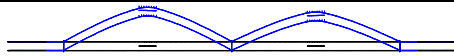

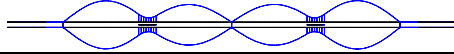
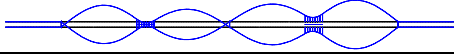
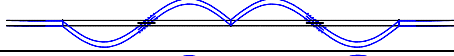
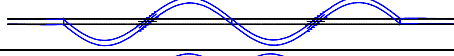

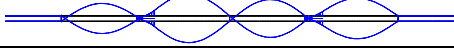
No.	Frequencies (Hz)	Cable-dominated in-plane mode shapes	Remarks
1	0.1257		1st cable-dominated deck lift mode
2	0.1257		2nd cable-dominated deck lift mode
3	0.1496		1st cable-dominated deck torsion mode
4	0.1496		2nd cable-dominated deck torsion mode
5	0.1787		3rd cable-dominated deck torsion mode
6	0.1804		4th cable-dominated deck torsion mode
7	0.2168		3rd cable-dominated deck lift mode
8	0.2168		4th cable-dominated deck lift mode

Table 2. Out-of-plane vibration sway modes after 10 % deck erection

No.	Frequencies (Hz)	Cable-dominated lateral sway mode shapes	Remarks
1	0.0485		1st cable-dominated sway mode
2	0.0487		2nd cable-dominated sway mode
3	0.1268		1st pure cable sway mode
4	0.1268		2nd pure cable sway mode
5	0.1281		3rd cable-dominated sway mode
6	0.1285		4th cable-dominated sway mode
7	0.1326		3rd pure cable sway mode
8	0.1327		4th pure cable sway mode

3.2. Local towers and stiffening decks dominated modes of vibration

Besides most of the local cable dominated modes, there also exist some local modes dominated by the tower and stiffening decks because of the interactions among the separate structures. The side and middle tower-dominated modes of vibration are listed in Table 3 respectively. It is interesting that all the bending and torsional modes of side towers are out-of-phase. For the mid-tower and side towers, the bending modes such as No. 1, 2, 4 and 5 modes, are all excited by the in-phase vibration of two cables, while the torsional modes, No. 3, 6, 7 are induced by the out-of-phase vibration of two cables.

The deck-dominated longitudinal swing modes are listed in Table 4. It is clearly that it is the bend of mid-tower and the small amplitude of longitudinal sway of main span cables excites these modes while the side span cables contribute nothing. The lateral oscillation and rotary oscillation of deck units usually appear in the cable-dominated modes as the No. 1 and 5 shown in Table 2.

Table 3. Tower-dominated modes after 10 % deck erection

No.	Frequencies (Hz)	In-plane mode shapes	Remarks
1	0.1435		1st side towers-bending mode (out-of-phase)
2	0.1934		2nd side towers-bending mode (out-of-phase)
3	0.2652		1st side towers-torsion mode (out-of-phase)
4	0.2837		3rd side towers-bending mode (out-of-phase)
5	0.2957		1st mid-tower-bending mode
6	0.3090		2nd side towers-torsion mode (out-of-phase)
7	0.3395		1st mid-tower-torsion mode

Table 4. Deck-dominated modes after 10 % deck erection

No.	Frequencies (Hz)	Deck-dominated mode shapes	Remarks
1	0.1750		1st deck-dominated longitudinal mode (in phase)
2	0.2100		2nd deck-dominated longitudinal mode (out-of-phase)
3	0.2221		3rd deck-dominated longitudinal mode (in-phase)

3.3. Global modes of vibration

The global in-plane vibration modes in low order of tower-cable-deck system of twin span suspension bridge are bending and torsional modes as listed the Table 5. All the modes contain the bend and torsion modes of towers with either in-phase or out-of-phase modes of main cables following with the lifting and torsional modes of decks. However, compared with local cable-dominated modes of vibration, such as the modes of No. 3 and 5, the amplitudes of some modal motion are much smaller. As the distribution characteristics of natural frequencies shown, the global out-of-plane vibration modes only appear in the high order modes and usually include the lateral oscillation of three towers, the multi-wave sway of main cables and the rotary oscillation of deck units.

Table 5. Global in-plane vibration modes after 10 % deck erection

No.	Frequencies (Hz)	Global in-plane mode shapes	Remarks
1	0.1057		1st global bending mode (in-phase)
2	0.1729		2nd global bending mode (in-phase)
3	0.2239		3rd global bending mode (in-phase)
4	0.2269		1st global torsion mode (in-phase)
5	0.2977		2nd global torsion mode (in-phase)

4. The variation of frequencies during deck erection stage

With more segments being added to the main cable, both the tension of main cables and

integral rigidity of suspension bridge are enhanced. What's more, the interaction between deck units and cables would be more prominent. All these changes inevitable contribute to the dynamic characteristics of structure. The natural frequencies of tower-cable-deck system in the different initial erection stages are listed in Table 6, in which the 0 % column denotes the frequencies of tower-cable system just after the main cable being erected and no girder segment being lifted yet. Obviously, all the natural frequencies are close spaced in low order range in each stage. The lowest natural frequency of the first cable-dominated lateral swing mode is about 0.05 Hz only.

Table 6. Natural frequencies of deck-related modes (Hz)

Mode of vibration	Erection construction schedule of stiffening decks (%)					
	0	5	10	20	30	40
1st cable-dominated sway mode	0.0522	0.0503	0.0485	0.0473	0.0466	0.0463
2nd cable-dominated sway mode	0.0524	0.0504	0.0487	0.0475	0.0468	0.0466
3rd cable-dominated sway mode	0.1038	0.1152	0.1281	0.1307	0.1083	0.0946
4th cable-dominated sway mode	0.1040	0.1155	0.1285	0.1308	0.1084	0.0947
1st pure cable sway mode	0.0524	0.1039	0.1268	0.1538	0.1846	0.2046
2nd pure cable sway mode	0.0524	0.1039	0.1268	0.1538	0.1846	0.2046
3rd pure cable sway mode	0.1042	0.1160	0.1326	0.1583	0.1907	0.2127
4th pure cable sway mode	0.1042	0.1160	0.1327	0.1584	0.1909	0.2129
1st cable-dominated deck lift mode	0.1075	0.1189	0.1257	0.1255	0.1170	0.1115
2nd cable-dominated deck lift mode	0.1075	0.1189	0.1257	0.1255	0.1170	0.1115
3rd cable-dominated deck lift mode	0.2138	0.2359	0.2168	0.2246	0.2513	0.2558
4th cable-dominated deck lift mode	0.2138	0.2359	0.2168	0.2246	0.2513	0.2558
1st cable-dominated deck torsion mode	0.1075	0.1257	0.1496	0.1854	0.2351	0.2741
2nd cable-dominated deck torsion mode	0.1075	0.1257	0.1496	0.1855	0.2359	0.2741
3rd cable-dominated deck torsion mode	0.2138	0.1773	0.1787	0.2209	0.2842	0.3032
4th cable-dominated deck torsion mode	0.2138	0.1776	0.1804	0.2220	0.2855	0.3209
1st side towers-bending mode	0.1465	0.1461	0.1435	0.1700	0.1891	0.1835
2nd side towers-bending mode	0.1767	0.1816	0.1934	0.2088	0.2141	0.2185
3rd side towers-bending mode	0.2631	0.2652	0.2837	0.2747	0.2819	0.3011
1st side towers-torsion mode	0.1517	0.2654	0.2652	0.2676	0.2720	0.2914
2nd side towers-torsion mode	0.2595	0.3055	0.3090	0.4512	0.5512	0.4057
1st mid-tower-bending mode	0.2714	0.2721	0.2957	0.2918	0.2939	0.3122
1st mid-tower-torsion mode	0.3625	0.3591	0.3395	0.4115	0.5245	0.5399
1st global bending mode	0.1297	0.1241	0.1057	0.1030	0.0982	0.0956
2nd global bending mode	0.1696	0.1673	0.1729	0.1889	0.1942	0.1854
3rd global bending mode	0.2294	0.2209	0.2239	0.2406	0.2653	0.2819
1st global torsion mode	0.1499	0.2390	0.2269	0.2324	0.2397	0.2493
2nd global torsion mode	0.2497	0.3046	0.2977	0.2907	0.3006	0.3441
1st deck-dominated longitudinal mode	—	0.2060	0.1750	0.1688	0.1544	0.1446
2nd deck-dominated longitudinal mode	—	0.2272	0.2100	0.1919	0.1723	0.1604

4.1. Variation analysis of frequencies

It is interesting to find that the natural frequencies of cable-dominated sway modes of vibration present in pairs as shown in Table 6. Before the erection of the first girder segment, in the 0 % column, the first two frequencies of cable-dominated and pure cable sway modes are almost the same as 0.0524 Hz. However, with more segments being erected, the frequencies of coupled system generate a larger difference, in which the first four frequencies of cable-dominated sway modes just slightly fluctuate but the first four frequencies of pure cable sway modes, affected more strongly from deck units, appear increasing with the erection progress.

In the vertical direction, the frequencies of cable-dominated modes also present in pairs. Following the procedure of erection, the first four frequencies of cable-dominated deck lifting modes only slightly change but the first four frequencies of cable-dominated deck torsional modes

affected by deck units rises significantly. As for the tower-dominated modes of local vibration and the modes of global vibration of system, the frequencies fluctuate but slightly. It is indicated that those modes is little affected by the effect of erection of deck units. It is interesting that the frequencies of deck-dominated longitudinal modes present even decreasing tendency in the erection procedure.

The aerodynamic stability of suspension bridge usually requests that the frequency ratio of the torsional mode to the corresponding vertical mode of the bridge girder above 2.0. From Table 6, it can be seen that the first frequency ratio of the torsional mode to the lift mode is only from 1.06 for 5 % erection progress to 2.46 for 40 % erection progress. The first frequency ratio for 30 % progress is 2.01 just satisfied the desire.

The third torsional to lift frequency ratio increases from 0.75 for 5 % erection progress to 1.19 for 40 % erection progress which are all below the ratio of 2.0 clearly. The first frequency ratio of completed Ma'anshan Bridge is 2.43 calculated from its first vertical frequency of 0.099 Hz and first torsional frequency of 0.241 Hz. By comparison, it can be seen that the aerodynamic instability of stiffening girder is more likely to occur in early girder erected stage rather than completed stage for TTTS suspension bridge also. As Table 6 shows, the vertical frequencies do not vary much during and after construction, because the girder's vertical stiffness is derived predominantly from the cable system. However, in contrast, a large percentage of the torsional stiffness comes from the girder itself. The torsional stiffness of girder is increasing with girder units erected progress as Fig. 5 shows. Therefore, the frequency ratio of torsional and lift mode is also gradually increasing.

4.2. Modal crossover phenomenon

From the foregoing study, it is known that the natural frequency of cable-dominated deck torsional modes is rising dramatically with the increasing number of stiffening deck units erected but the other modes do not as shown in Figs. 5 and 6. From Fig. 5, it is seen that the first frequencies of cable-dominated deck lift modes and global bending modes do not vary much but the first natural frequency of cable-dominated deck torsional modes presents linear increase. As a result, a modal crossover phenomenon occur at about 5 % erection stage.

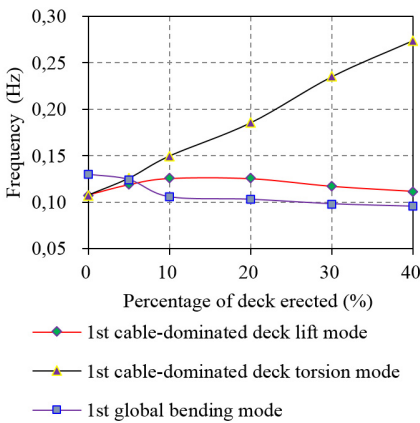


Fig. 5. Comparison of first frequencies

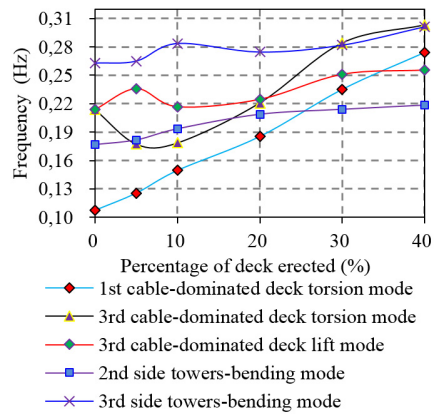


Fig. 6. Comparison of high order frequencies

Fig. 6 shows the comparison of variation of higher mode frequencies. It is seen that the variation range of first and third frequency of torsional mode are maximum. The first torsional mode transcends the second side towers-bending mode and the third cable-dominated deck lift mode respectively at around 25 % and 35 % erected stage. Similarly, the third torsional mode frequency also transcends the others at some percentage of the erection. It is seen that the increasing deck units enhance the continuity of structure thus the torsional frequencies increase,

while the vertical frequencies do not vary much during and after construction, as the girder's vertical stiffness is derived predominantly from the cable system. The different increment of each mode frequency leads to the crossover phenomenon. This often leaves vertical and torsional frequencies dangerously close to each other during construction. Partially completed bridge girders can be extremely vulnerable to wind-induced vibrations for TTTS suspension bridge, also the evolution study of the frequency is useful reference for further measures for wind resistance.

5. The aerodynamic stability analysis under erection and flutter control

5.1. Aerodynamic stability analysis at early erection stage

Based on the modal analysis above, the critical wind speed through the deck erection stage can be calculated by the formula:

$$V_{cr} = \eta_{\alpha} \cdot \eta_s \cdot \left[1 + (\varepsilon - 0.5) \sqrt{\left(\frac{r}{b}\right) \cdot 0.72\mu} \right] \omega_b \cdot b, \quad (1)$$

where η_s is the modified coefficient of cross section shape; η_{α} is the modified coefficient of wind attack angle; ε is the fundamental torsion to vertical bending frequency ratio; r is the rotational radius of the deck cross section; ω_b is the angular frequency of the fundamental vertical bending mode; b is the half width of the deck; μ is the density ratio of the bridge to air; η_s and η_{α} of the bridge were taken as 0.7 and 0.8 respectively. The mass per meter of the main cable and the main girder is 4816.548 kg/m and 16430.310 kg/m respectively. The moment of inertia of the girder is $2.63 \times 10^6 \text{ kg} \cdot \text{m}^2/\text{m}$ in erection period.

The critical wind speed is 19, 23, 28, 33 m/s at 10 %, 20 %, 30 % and 40 % of deck completion, the minimum stability limit occurs at erection stages when about 10-20 % of the main span deck is in place. The worst condition still happens at the very early stage of deck erection for triple-tower suspension bridge and the instability occurs at a low wind speed. The disadvantage of low critical flutter speeds can be avoided by restricting the deck erection to a period of calm weather otherwise some measures must be taken.

5.2. Flutter control using wind ropes

Two structural means was investigated, the provision of eccentric masses is proved not to be an efficient method. So the wind ropes method is adopted to enhance the aerodynamic stability. There are 10 groups of wind ropes with 4 ropes each, in which two are parallel and two crossover as shown in Figs. 7 and 8, at side span the ropes connect the top base of the pier and the middle points of the side main cables, while the ropes in middle span connect the 1/4 and 1/8 points of the span.

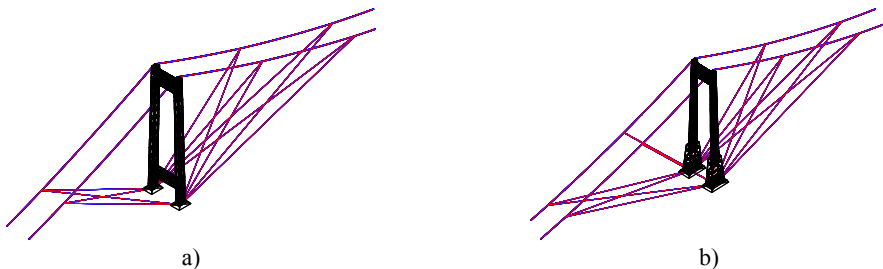


Fig. 7. a) The wind ropes at the side tower and b) middle tower

The frequencies of cable-dominated mode are listed in Table 7 before and after the wind ropes are used, it is clear that the application of the wind ropes dramatically increases the vertical

bending frequency and torsional frequency, and, the ratio of torsional frequency to vertical bending frequency. Using Eq. (1), the flutter speeds is 37,45, 53,60 m/s at 10 %, 20 %, 30 % and 40 % of deck completion, in each corresponding stage, the critical speed increases dramatically, it is clear the application of the wind ropes improve the aerodynamics ability of the structure in erection period.

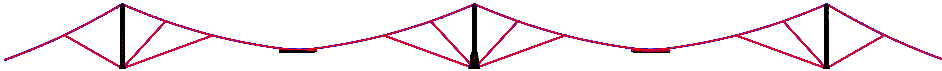


Fig. 8. The side view of the arrangement of wind ropes

Table 7. Frequencies of cable-dominated mode before and after wind resisting cable set

Mode	Erection stage (%)							
	10		20		30		40	
	N	Y	N	Y	N	Y	N	Y
1st girder lift mode	0.1257	0.2214	0.1255	0.1953	0.1170	0.1697	0.1115	0.1628
2nd girder lift mode	0.1257	0.2245	0.1255	0.1955	0.1170	0.1703	0.1115	0.1636
3rd girder lift mode	0.2168	0.3842	0.2246	0.4052	0.2513	0.3712	0.2558	0.4256
4th girder lift mode	0.2168	0.3865	0.2246	0.4053	0.2513	0.3767	0.2558	0.4289
1st girder torsion mode	0.1496	0.2983	0.1854	0.3730	0.2351	0.4410	0.2741	0.5075
2nd girder torsion mode	0.1496	0.3010	0.1855	0.3732	0.2359	0.4633	0.2741	0.5077
3rd girder torsion mode	0.1787	0.3634	0.2209	0.4194	0.2842	0.4877	0.3032	0.5447
4th girder torsion mode	0.1804	0.3636	0.2220	0.4200	0.2855	0.5103	0.3209	0.5496

6. Conclusions

Based on the finite element mode of completed bridge, some three-dimensional dynamic finite element models of tower-cable-deck system of triple tower twin span suspension bridge during the deck erection stage are established by a reverse dismantling way for the cases of 0 %, 5 %, 10 %, 20 %, 30 %, and 40 % partially completed bridge girders respectively. The dynamic characteristics of each system are analyzed to study the modal properties and evolution of each mode frequency for full understanding the behavior of this kind of bridge.

The results indicate that the natural frequencies of each erection stage are close spaced in low order. The most vibrations are cable-dominated modes for the obvious interaction between decks and cables and the rest are tower or deck dominated modes. The out-plane and in-plane vibrations of cables excite the swing, lifting and torsional mode of decks respectively. Due to the modal properties, in phase or out of phase, of two cables in the same span and the modal combinations between two main span cables, the modal groups are divided clearly by the frequencies and vibration modes.

With the increasing number of deck unit erected, the girder is built up and the frequencies of deck-dominated mode are rising. The different degrees of changes of each modal frequency generate modal transcend phenomena reflects that the instability of dynamic characteristics during the forming process of girder.

For the middle-to-pylons erection sequence the critical wind speed is low at each early erection stage, and, a wind rope control measure can improve the wind stability dramatically for triple-tower suspension bridge.

The study of dynamic characteristics and wind control method, in each deck erection stage, provides a reference to the wind-resistance measures of twin-span suspension bridge in stiffening girder erection stage.

Acknowledgements

The work reported is supported by a project funded by the Priority Academic Program Development of Jiangsu Higher Education Institutions, and the Innovation Engineering Project of

the Postgraduate Education of Jiangsu Province in 2014 (Project No. KYLX_0877).

References

- [1] **Niels J. Gimsing** Cable Supported Bridges: Concept and Design. John Wiley and Sons, 1st edition, 1983.
- [2] **Lin T. Y., Chow Philip** Gibraltar strait crossing-a challenge to bridge and structural engineers. *Structural Engineering International*, Vol. 1, Issue 6, 1991, p. 53-58.
- [3] **Forsberg T.** Multi-span suspension bridges. *International Journal of Steel Structures*, Vol. 1, Issue 1, 2001, p. 63-73.
- [4] **Yoshida O., Okuda M., Moriya T.** Structural characteristics and applicability of four-span suspension bridge. *Journal of Bridge Engineering*, Vol. 9, Issue 5, 2004, p. 453-463.
- [5] **Jennings A.** Gravity stiffness of classical suspension bridges. *Journal of Structural Engineering*, Vol. 109, Issue 1, 1983, p. 16-36.
- [6] **Xiheng Luo, Dazhang Han, Tianbao Wan** Deflection theory and its programming for multi-tower suspension bridges. *Bridge Construction*, Vol. 41, Issue 2, 2008, p. 41-44, (in Chinese).
- [7] **Yang Jin** Technical feasibility and advantages of applying multi-tower and multi-span suspension bridge to construction of long bridge across straits. *Bridge Construction*, Vol. 36, Issue 2, 2009, p. 36-39, (in Chinese).
- [8] **Deng Ting, Luo Xiheng** Study for reasonable value of friction coefficient between main cable and saddle. *Engineering Sciences*, Vol. 10, Issue 3, 2012, p. 72-76, (in Chinese).
- [9] **Dong-Ho Choi, Sun-Gil Gwon, Hoon Yoo, Ho-Sung Na** Nonlinear static analysis of continuous multi-span suspension bridges. *International Journal of Steel Structures*, Vol. 13, Issue 1, 2013, p. 103-115.
- [10] **Huu-Tai Thai, Dong-Ho Choi** Advanced analysis of multi-span suspension bridges. *Journal of Constructional Steel Research*, Vol. 90, 2013, p. 29-41.
- [11] **Xinjun Zhang** Investigation on aerodynamic stability of long-span suspension bridges under erection. *Journal of Wind Engineering and Industrial Aerodynamics*, Vol. 92, Issue 1, 2004, p. 1-8.
- [12] **Ge Y. J., Xu L. S., Zhang W. M., Zhou Z. Y.** Dynamic and aerodynamic characteristics of new suspension bridges with double main spans. In *Seventh Asia-Pacific Conference on Wind Engineering*, Taipei, Taiwan, 2009, p. 177-180.
- [13] **Wenming Zhang, Yaojun Ge, Marc L. Levitan** Nonlinear aerostatic stability analysis of new suspension bridges with multiple main spans. *Journal of the Brazilian Society of Mechanical Sciences*, Vol. 35, Issue 2, 2013, p. 143-151.
- [14] **Xu Y. L., Ko J. M., Yu Z.** Modal analysis of tower-cable system of Tsing Ma long suspension bridge. *Engineering Structures*, Vol. 19, Issue 10, 1997, p. 857-867.
- [15] **Xu Y. L., Ko J. M., Zhang W. S.** Vibration studies of Tsing Ma suspension bridge. *Journal of Bridge Engineering*, Vol. 2, Issue 4, 1997, p. 149-156.
- [16] **Wang L. B., Guo X. Y., Noori M., Hua J.** Modal analysis of cable-tower system of twin-span suspension bridge. *Journal of Vibroengineering*, Vol. 16, Issue 4, 2014, p. 1977-1991.
- [17] **Ge Y. J., Tanaka H.** Aerodynamic stability of long-span suspension bridges under erection. *Journal of Structural Engineering*, Vol. 36, Issue 12, 2008, p. 1404-1412.
- [18] **Wei Z. G., Ge Y. J., Yang Y. X.** Effectiveness of storm ropes for long suspension bridges' flutter control. *Journal of Tong Ji University*, Vol. 126, Issue 12, 2000, p. 1628-1632.
- [19] *Wind-resistant Design Specification for Highway Bridges*. CCCC highway planning and design institute, China Communications Press, Peking, China, 2004, (In Chinese).



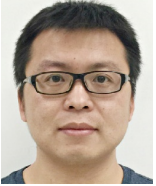
Hui Jin received Ph.D. degree in School of Mechanical Engineering from Southeast Jiaotong University, Chengdu, China, in 2003. Now she works at School of Civil Engineering, Southeast University, Nanjing, China. Her current research interests include structural analysis and reliability.



Xiaoyi Guo now is a Master student in School of Civil Engineering, Nanjing Forestry University, China. His research topic is the study of the structural static and dynamic characteristics of the cable-suspended bridge.



Libin Wang received Ph.D. in School of Civil Engineering form Southeast University, Nanjing, China, in 2012. Now he works at School of Civil Engineering, Nanjing Forestry University, his research interests include safety, reliability and dynamics of cable-suspended bridge.



Dongming Feng is a Ph.D. candidate in Columbia University, New York, US. His research interests include development of vision-based displacement measurement system, modal analysis, model updating, and vehicle-bridge interaction related structural health monitoring.