

BRIEF REPORT

Leukemia-associated Rho guanine-nucleotide exchange factor is not critical for RhoA regulation, yet is important for platelet activation and thrombosis in mice

C. M. WILLIAMS,* M. T. HARPER,*‡ R. GOGGS,*§ T. G. WALSH,* S. OFFERMANNST† and A. W. POOLE*

*School of Physiology & Pharmacology, University of Bristol, Bristol, UK; †Max Planck Institute for Heart and Lung Research, Bad Nauheim, Germany; ‡Present address: Department of Pharmacology, University of Cambridge, Cambridge, CB2 1PD, UK; and §Present address: Department of Clinical Sciences, Cornell University, Ithaca, NY, USA

To cite this article: Williams CM, Harper MT, Goggs R, Walsh TG, Offermanns S, Poole AW. Leukemia-associated Rho guanine-nucleotide exchange factor is not critical for RhoA regulation, yet is important for platelet activation and thrombosis in mice. *J Thromb Haemost* 2015; **13**: 2102–7.

Summary. *Background:* RhoA is an important regulator of platelet responses downstream of $G\alpha_{13}$, yet we still know little about its regulation in platelets. Leukemia-associated Rho guanine-nucleotide exchange factor (GEF [LARG]), a RhoA GEF, is highly expressed in platelets and may constitute a major upstream activator of RhoA. To this end, it is important to determine the role of LARG in platelet function and thrombosis. *Methods and results:* Using a platelet-specific gene knockout, we show that the absence of LARG results in a marked reduction in aggregation and dense-granule secretion in response to the thromboxane mimetic U46619 and proteinase-activated receptor 4-activating peptide, AYPGKF, but not to adenosine diphosphate. In a ferric chloride thrombosis model *in vivo*, this translated into a defect, under mild injury conditions. Importantly, agonist-induced RhoA activation was not affected by the absence of LARG, although basal activity was reduced, suggesting that LARG may play a housekeeper role in regulating constitutive RhoA activity. *Conclusions:* LARG plays an important role in platelet function and thrombosis *in vivo*. However, although LARG may have a role in regulating the resting activation state of RhoA, its role in regulating platelet function may principally be through RhoA-independent pathways, possibly through other Rho family members.

Keywords: gene knockout; LARG protein, mouse; mouse; platelets; RhoA protein, mouse; thrombosis.

Introduction

Platelets are critical for the formation of thrombi in blood vessels, leading to rapid occlusion and tissue infarction. An understanding of their function, at a molecular level, is vital to enable a better understanding of the pathophysiology of thrombotic ischemic disease and development of approaches for diagnosis and management. Platelets express multiple members of the Rho family of small GTPases, whose role in many cell types is associated with actin cytoskeletal rearrangements and membrane and granule trafficking [1–4]. In turn, these GTPases are regulated by the balanced activities of Rho activators, the guanine nucleotide exchange factors (GEFs), and Rho inhibitors, the GTPase activating proteins (GAPs). Oligophrenin-1 has recently been shown to be an important RhoGAP in platelets [5], but the activity of expressed RhoGEFs in platelets is currently sparsely reported.

The most abundantly expressed RhoGEF in platelets is leukemia-associated RhoGEF (LARG, also known as ARHGEF12) [6], a G protein-coupled receptor (GPCR)-regulated GEF. Previously, RhoA has been described as an important regulator of platelet function and development, with the generation of a platelet-specific RhoA knockout showing macrothrombocytopenia, reduced platelet function in response to the thromboxane mimetic, U46619, and thrombin and also reduced thrombus formation *in vivo* [4]. Based on the high level of LARG expression in platelets and its specificity for RhoA [7], we hypothesized that LARG would be the principal signal transducer from $G\alpha_{13}$ -coupled receptors to RhoA [8].

Here, we present data that demonstrate LARG is an important regulator of platelet function and thrombosis *in vivo* but suggest that agonist-induced RhoA activation

Correspondence: Alastair W. Poole, School of Physiology & Pharmacology, Medical Sciences Building, University Walk, Bristol, BS8 1TD UK.

Tel.: +44 117 331 1435; fax: +44 117 331 2288.

E-mail: a.poole@bris.ac.uk

Received 8 May 2015

Manuscript handled by: J. Heemskerk

Final decision: P. H. Reitsma, 12 August 2015

does not primarily depend on LARG. As such, the regulation of RhoA may principally be mediated by GEFs other than LARG, and LARG may act independently of RhoA.

Methods

Mice

Mice carrying a floxed allele of the gene encoding LARG (*Arhgef12*) were generated as previously described [9] and crossed with PF4-Cre-positive mice for the generation of platelet-specific knockouts. Studies were approved by the local research ethics committee at the University of Bristol, UK, with mice bred and maintained under the UK Home Office project license PPL 30/2908.

Preparation of platelet-rich plasma

Platelet-rich plasma (PRP) was prepared from heparinized blood (100 U mL⁻¹ 1:10 v/v) taken via cardiac puncture and supplemented with 10 U mL⁻¹ heparin (1:5 v/v). Briefly, heparinized blood was spun in a fixed bucket microcentrifuge at 200 × *g* for 5 min. The PRP and top third of the erythrocyte layer were spun again in a swing bucket centrifuge at 200 × *g* for 6 min. PRP was standardized to 2 × 10⁸ platelets mL⁻¹ in modified HEPES-Tyrode's buffer. The residual erythrocyte layer was spun at 1000 × *g* in a fixed bucket microcentrifuge. PPP was removed and diluted to the same extent as the appropriate PRP.

Washed platelet preparation

Washed platelets were prepared from citrated blood (4% sodium citrate, 1:10 v/v) taken via cardiac puncture and supplemented with acid-citrate dextrose (1:7 v/v). Platelets were pelleted from PRP in the presence of 140 nmol L⁻¹ prostaglandin E₁ and 0.02 unit mL⁻¹ apyrase. The platelet pellet was resuspended at a concentration of 2 × 10⁸ platelets mL⁻¹ in modified HEPES-Tyrode's buffer containing 0.02 unit mL⁻¹ apyrase. For certain assays, 10 μmol L⁻¹ indomethacin was added before and after the pelleting stage.

Western blotting

Western blotting samples were prepared from washed platelet preparations. Rabbit anti-LARG (clone H70) and rabbit anti-RhoA (clone 26C4) were from Insight Biotechnology (Wembley, UK). Mouse anti-α-tubulin was from Sigma UK (Poole, UK).

Flow cytometry

Washed platelets at 2 × 10⁷ platelets mL⁻¹ were incubated with 1/25 dilution from stock of FITC-conjugated rat anti-mouse antibodies against CD41/α_{IIb}, glycoprotein (GP)VI, and GPIbα or isotype-specific controls, for

10 min at room temperature, before fixation with an equal volume of 4% paraformaldehyde. Samples were analyzed on a BD FACS Canto II flow cytometer (BD Biosciences, Oxford, UK) with FACS Diva software.

Lumiaggregometry

Lumiaggregometry was performed on a ChronoLog Corp. Model 560-VS aggregometer and Aggrolink 5 software (Lab Medics, Abingdon On Thames, UK). Manufacturer's instructions were followed, with the exception that the aggregations were scaled down to 250 μL. Maximum extent and rate of aggregation were calculated using the Aggrolink 5 software.

Thromboxane B₂ ELISA

Releasates were generated under aggregating conditions before being quenched with 5 mmol L⁻¹ EDTA and 200 μmol L⁻¹ indomethacin. Releasates were centrifuged for 3 min at 10 000 × *g*, decanted, and snap frozen. Releasates were diluted 1:50 before analysis of thromboxane B₂ levels via a commercial ELISA kit (Enzo Life Sciences, Exeter, UK) according to the manufacturer's instructions as previously described [10].

RhoA G-LISA

Washed platelets were stimulated under non-stirring conditions before the addition of an equal volume of ice-cold 2× lysis buffer (100 mmol L⁻¹ Tris-Cl, 1 mol L⁻¹ NaCl, 10 mmol L⁻¹ MgCl₂, 2% Triton X-100) containing Compete, EDTA-free protease inhibitors (Roche Diagnostics Ltd, Burgess Hill, UK). Lysates were analyzed via commercial RhoA G-LISA kit (Cytoskeleton Inc., Universal Biologicals, Cambridge, UK) according to the manufacturer's instructions.

Spreading assays

Platelets containing indomethacin at 4 × 10⁷ platelets mL⁻¹ were added onto coverslips coated in 50 μg mL⁻¹ collagen-related peptide or 100 μg mL⁻¹ fibrinogen, or BSA as a control, for 30 min at room temperature. Cells were fixed with an equal volume of 8% paraformaldehyde, washed twice with PBS, and stained with 2 μmol L⁻¹ DiOC₆ for 1 h at room temperature. Platelets were washed twice before being mounted with MOWIOL solution containing DABCO. Platelets were imaged on a Leica DM IRM epifluorescence microscope with five random fields of view captured using Velocity Image Analysis software (Perkin Elmer, Coventry, UK). Images were analyzed using ImageJ 1.46.

In vivo thrombosis assays

Mice were anesthetized with 100 mg kg⁻¹ ketamine (Vetalar V, Pfizer) and 10 mg kg⁻¹ xylazine (Rompun,

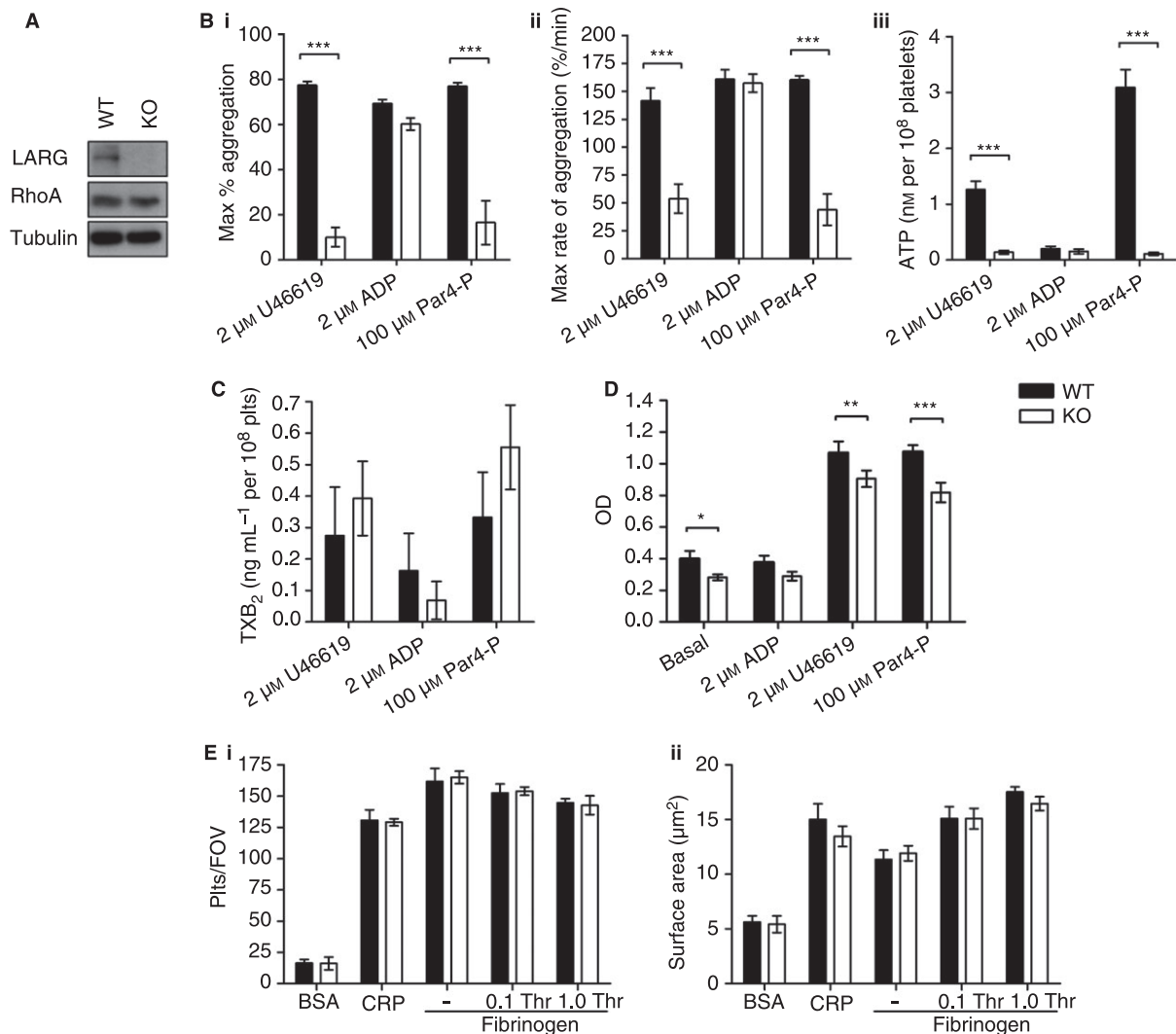


Fig. 1. Leukemia-associated Rho guanine-nucleotide exchange factor (LARG)-null platelets are developmentally normal, but demonstrate reduced activity to the thromboxane mimetic U46619 and proteinase-activated receptor 4 (PAR4) peptide AYPGKF. (A) Platelet lysates from wild-type (WT) and knockout (KO) mice were probed via Western blotting ($n = 3$). (B) Platelet-rich plasma (PRP) from WT and KO mice was analyzed via lumiaaggregometry to determine (i) the maximum extent of aggregation within 3 min, (ii) the maximum rate of aggregation, and (iii) the amount of adenosine triphosphate (ATP) secretion as a readout of dense-granule secretion ($n \geq 3$). Data were compared by 2-way ANOVA with $***P < 0.001$. (C) PRP from WT and KO mice was stimulated under stirring conditions for 5 min. Reactions were stopped with 5 mmol L⁻¹ EDTA and 200 $\mu\text{mol L}^{-1}$ indomethacin. Releasates were harvested via centrifugation before being analyzed for thromboxane (TX)₂ levels by ELISA ($n \geq 3$). (D) RhoA activity was measured by G-LISA. Washed platelets from WT and KO mice at 2×10^8 platelets mL⁻¹, supplemented with 0.02 unit mL⁻¹ apyrase, were stimulated under non-stirred conditions for 5 min at 37 °C ($n = 7$). Data are shown as optical density (OD) and were compared by 2-way ANOVA with $*P < 0.05$, $**P < 0.01$, and $***P < 0.001$. (E) Washed platelets were applied to BSA, collagen-related peptide (CRP), or fibrinogen-coated surfaces for 1 h before fixing and staining. Adhesion was determined as being the number of adhered platelets per field of view (i), and platelet spread area was determined by fluorescence (ii). Platelets applied to fibrinogen-coated surfaces were co-stimulated with either 0.1 unit mL⁻¹ or 1.0 unit mL⁻¹ thrombin to stimulate spreading on that surface.

Bayer). Platelets were labeled by intravenous administration of 100 mg kg⁻¹ Dylight 488-conjugated anti-GP_{1b} β antibody (Emfret Analytics, Eibelstadt, Germany). Right arteries were exposed, and 2×1 -mm pads of filter paper soaked with ferric chloride in PBS were applied for 3 min. Injury sites were imaged by time-lapse microscopy for 20 min, and images were analyzed by ImageJ 1.46. Background fluorescence values measured upstream of the injury site were subtracted from the thrombus-specific

fluorescence. Data are expressed as integrated fluorescence density.

In vitro thrombosis assays

In vitro thrombosis assays were performed on a parallel-plate flow chamber. Coverslips were coated with 50 $\mu\text{g mL}^{-1}$ HORM collagen for 2 h at room temperature before being blocked overnight at 4 °C with 1% fatty

Table 1 Hematology and platelet surface receptor analysis

	WT			KO		
	Mean	SEM	<i>n</i>	Mean	SEM	<i>n</i>
Hematology						
WBC* (10^3 mm^{-3})	7.26	0.70	11	5.73	0.70	11
RBC† (10^6 mm^{-3})	10.13	0.19	11	10.18	0.24	11
PLT‡ (10^3 mm^{-3})	749.6	47.2	11	804.0	56.9	11
MPV§ (μm^3)	5.32	0.15	11	5.26	0.06	11
Surface receptors						
GP α_{IIb}	3127	115	4	3139	212	5
GPIb	713.8	53.6	4	754.5	49.2	5
GPVI	320.9	9.7	4	325.8	11.7	5

Hematology data of citrated whole blood were acquired using a Horiba Pentra ES60. Platelet surface receptors were determined by flow cytometry. Washed platelets from wild-type (WT) and knockout (KO) mice were incubated with fluorescently conjugated antibodies against GP α_{IIb} , GPIb, and GPVI and then fixed. Data are presented as geometric means. *White blood cells. †Red blood cells. ‡Platelets. §Mean platelet volume.

acid-free BSA (Sigma, Poole, UK). Assembled chambers were blocked for 30 min at room temperature before a run. Blood was taken into 4% citrate (1:10 v/v) supplemented with 2 units mL^{-1} heparin and 40 $\mu\text{mol L}^{-1}$ PPACK. Blood was incubated with 2 $\mu\text{mol L}^{-1}$ DiOC₆ for 10 min at room temperature. Blood was allowed to flow at 1000 s^{-1} for 2 min. Images were captured by time-lapse microscopy, with five randomly selected fields of view captured for end-point analysis. Images were analyzed by ImageJ 1.46.

Results and discussion

Platelets from LARG:PF4-Cre⁺ (knockout) mice were confirmed to be deficient in LARG, yet still expressed wild-type levels of RhoA (Fig. 1A). Hematologic analysis of knockout mice showed that absence of LARG from platelets did not impair hematopoiesis. Likewise, the absence of LARG in platelets did not affect the basal cell surface expression of key platelet GP α_{IIb} , GPIb, and GPVI (Table 1). This is unlike the RhoA knockout where a macrothrombocytopenia was present [4], indicating that the absence of LARG, unlike RhoA, does not impact the development and generation of platelets *in vivo*.

Aggregation of knockout platelets in PRP was diminished in response to the thromboxane mimetic U46619 and the protease-activated receptor 4 (PAR4) activating-peptide (PAR4-P) AYPGKF but not to adenosine diphosphate. Dense granule secretion, as measured by adenosine triphosphate release in a luciferin-luciferase assay (Fig. 1B), was also reduced in knockout platelets; however, thromboxane generation was not (Fig. 1C). The defect in thromboxane and PAR4-dependent responses and not those to adenosine diphosphate suggests that LARG is important in G $\alpha_{12/13}$ -linked GPCR responses and not those linked to G α_i /G α_q . Adhesion and spreading

of LARG-deficient platelets on fibrinogen or collagen-related peptide (CRP) under static conditions were also normal (Fig. 1E), suggesting that LARG does not act downstream of $\alpha_{\text{IIb}}\beta_3$ integrin-associated G α_{13} [11].

Importantly, RhoA activity was reduced in knockout platelets compared with wild-types in both resting and agonist-stimulated platelets, when measured with G-LISA (Fig. 1D). When normalized to basal activity (not shown), there was no longer a difference in stimulated RhoA activity between controls and LARG-deficient platelets, suggesting that LARG regulates basal RhoA activity but is not critical for activating RhoA after platelet stimulation. LARG was a good candidate to be the primary GEF regulating RhoA activity in platelets, so it is therefore surprising that RhoA activity was not altered in an agonist-dependent manner. It could be that LARG plays a 'housekeeping' role, maintaining a background level of RhoA activation, such that its absence results in a cell that is less responsive, and that RhoA agonist-dependent activation occurs through other RhoGEFs. The uncoupling of the apparent functional roles of LARG from RhoA activation may also be due to LARG regulating another Rho family member in platelets [12]. However, given that both RhoF [2] and RhoG [1,13] knockout mice present dissimilar phenotypes, these Rho family members are unlikely to be regulated by LARG, suggesting that RhoB or RhoC may be involved, despite their low copy numbers [14]. It has also been reported that LARG can form homodimers or heterodimers with PDZ-RhoGEF, via interactions with their inhibitory C-terminal domains that may recruit other inhibitory factors [15]. Although PDZ-RhoGEF is not reported to be expressed in platelets at the protein level [14], the suggestion that dimerization may recruit other inhibitory factors could be important for explaining the regulatory role of LARG in platelets.

Analysis of thrombus formation *in vivo* revealed knockout mice were also protected from thrombosis induced at lower (6%) concentrations of FeCl₃ (Fig. 2A), although at higher concentrations (12%) of FeCl₃, this protection was overcome (Fig. 2B). Likewise, thrombus formation on collagen-coated surface *in vitro*, under non-coagulating conditions, showed no difference between wild-type and knockout mice (Fig. 2C). The presence of an *in vivo* defect under milder injury conditions is consistent with a defect in thrombin-dependent thrombus formation [16]. The absence of a difference in thrombus formation under non-coagulating conditions *in vitro*, where thrombin is not generated, is also consistent with a G $\alpha_{12/13}$ -link.

We conclude that the Rho-GEF LARG has an important role in regulating platelet aggregation downstream of G α_{13} -coupled receptors (thrombin and thromboxane receptors). Importantly, this translates into a defect in arterial thrombosis *in vivo*. Although we had hypothesized that LARG may be operating through RhoA to mediate

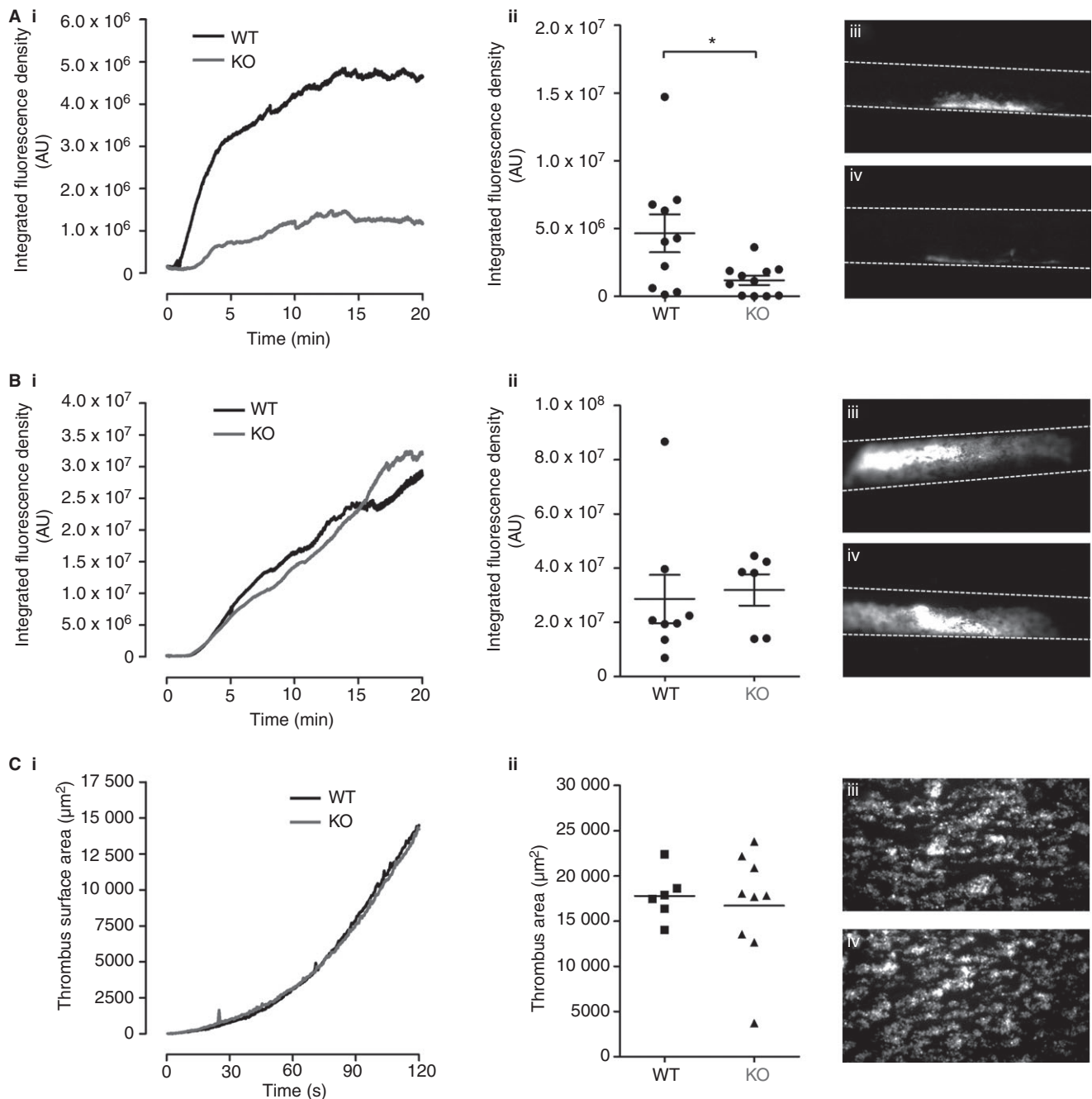


Fig. 2. Mice with leukemia-associated Rho guanine-nucleotide exchange factor (LARG)-null platelets demonstrate reduced thrombus formation in response to low-level injury *in vivo*. Exposed carotid arteries from wild-type (WT) and knockout (KO) mice were injured with (A) 6% (WT $n = 10$, KO $n = 11$) or (B) 12% ferric chloride (WT $n = 8$, KO $n = 6$) for 3 min. Thrombus formation was monitored for 20 min. Data were analyzed using ImageJ 1.46, yielding (i) the mean integrated fluorescence density over time and (ii) the thrombus size after 20 min. Representative images of thrombi from (iii) WT and (iv) KO. Data were compared by unpaired *t*-test where appropriate. * $P < 0.05$. (C) Whole blood was flowed through a parallel-plate flow chamber over a collagen-coated surface. Platelet accumulation was followed for 2 min by time-lapse microscopy (i) with still images taken for end point analysis (ii). Representative images of thrombi from (iii) WT and (iv) KO.

these effects, the difference in phenotypes between LARG-deficient and RhoA-deficient platelets and our discovery here that only basal RhoA activity is affected by absence of LARG points to other pathways that LARG

may regulate to mediate its effects. Given the marked effect on dense granule secretion, we suggest that LARG may be operating as a novel regulator of secretion downstream of $G\alpha_{13}$ -coupled receptors.

Addendum

C. M. Williams designed and performed experiments, analyzed data, and wrote the manuscript. M. T. Harper, R. Goggs, and T. G. Walsh designed and performed experiments, analyzed data, and edited the manuscript. S. Offermanns provided essential reagents and edited the manuscript. A. W. Poole designed experiments and wrote the manuscript.

Acknowledgements

We thank Elizabeth Aitken for expert technical support. Research was funded by the British Heart Foundation (RG/10/006/28299, PG/13/14/30023) and the Wellcome Trust (WT090093MA).

Disclosure of Conflict of Interests

The authors state that they have no conflict of interest.

References

- Goggs R, Harper MT, Pope RJ, Savage JS, Williams CM, Mundell SJ, Heesom KJ, Bass M, Mellor H, Poole AW. RhoG protein regulates platelet granule secretion and thrombus formation in mice. *J Biol Chem* 2013; **288**: 34217–29.
- Goggs R, Savage JS, Mellor H, Poole AW. The small GTPase Rif is dispensable for platelet filopodia generation in mice. *PLoS ONE* 2013; **8**: e54663.
- Aslan JE, McCarty OJ. Rho GTPases in platelet function. *J Thromb Haemost* 2013; **11**: 35–46.
- Pleines I, Hagedorn I, Gupta S, May F, Chakarova L, van Hengel J, Offermanns S, Krohne G, Kleinschnitz C, Brakebusch C, Nieswandt B. Megakaryocyte-specific RhoA deficiency causes macrothrombocytopenia and defective platelet activation in hemostasis and thrombosis. *Blood* 2012; **119**: 1054–63.
- Fotinos A, Klier M, Gowert NS, Munzer P, Klatt C, Beck S, Borst O, Billuart P, Schaller M, Lang F, Gawaz M, Elvers M. Loss of Oligophrenin1 leads to uncontrolled Rho activation and increased thrombus formation in mice. *J Thromb Haemost* 2014; **13**: 619–30.
- Rowley JW, Oler AJ, Tolley ND, Hunter BN, Low EN, Nix DA, Yost CC, Zimmerman GA, Weyrich AS. Genome-wide RNA-seq analysis of human and mouse platelet transcriptomes. *Blood* 2011; **118**: e101–11.
- Jaiswal M, Gremer L, Dvorsky R, Haeusler LC, Cirstea IC, Uhlenbrock K, Ahmadian MR. Mechanistic insights into specificity, activity, and regulatory elements of the regulator of G-protein signaling (RGS)-containing Rho-specific guanine nucleotide exchange factors (GEFs) p115, PDZ-RhoGEF (PRG), and leukemia-associated RhoGEF (LARG). *J Biol Chem* 2011; **286**: 18202–12.
- Fukuhara S, Chikumi H, Gutkind JS. Leukemia-associated Rho guanine nucleotide exchange factor (LARG) links heterotrimeric G proteins of the G(12) family to Rho. *FEBS Lett* 2000; **485**: 183–8.
- Herroeder S, Reichardt P, Sassmann A, Zimmermann B, Jaeneke D, Hoeckner J, Hollmann MW, Fischer KD, Vogt S, Grosse R, Hogg N, Gunzer M, Offermanns S, Wettschreck N. Guanine nucleotide-binding proteins of the G12 family shape immune functions by controlling CD4 + T cell adhesiveness and motility. *Immunity* 2009; **30**: 708–20.
- Walsh TG, Harper MT, Poole AW. SDF-1alpha is a novel autocrine activator of platelets operating through its receptor CXCR4. *Cell Signal* 2015; **27**: 37–46.
- Gong H, Shen B, Flevaris P, Chow C, Lam SC, Voinyo-Yasenet-skaya TA, Kozasa T, Du X. G protein subunit Galpha13 binds to integrin alphaIIb beta3 and mediates integrin 'outside-in' signaling. *Science* 2010; **327**: 340–3.
- Goggs R, Williams CM, Mellor H, Poole AW. Platelet Rho GTPases—a focus on novel players, roles and relationships. *Biochem J* 2015; **466**: 431–42.
- Kim S, Dangelmaier C, Bhavanasi D, Meng S, Wang H, Goldfinger LE, Kunapuli SP. RhoG protein regulates glycoprotein VI-Fc receptor gamma-chain complex-mediated platelet activation and thrombus formation. *J Biol Chem* 2013; **288**: 34230–8.
- Zeiler M, Moser M, Mann M. Copy number analysis of the murine platelet proteome spanning the complete abundance range. *Mol Cell Proteomics* 2014; **13**: 3435–45.
- Chikumi H, Barac A, Behbahani B, Gao Y, Teramoto H, Zheng Y, Gutkind JS. Homo- and hetero-oligomerization of PDZ-RhoGEF, LARG and p115RhoGEF by their C-terminal region regulates their *in vivo* Rho GEF activity and transforming potential. *Oncogene* 2004; **23**: 233–40.
- Cornelissen I, Palmer D, David T, Wilsbacher L, Concengco C, Conley P, Pandey A, Coughlin SR. Roles and interactions among protease-activated receptors and P2ry12 in hemostasis and thrombosis. *Proc Natl Acad Sci U S A* 2010; **107**: 18605–10.