



## LJMU Research Online

Radapong, S, Sarker, SD and Ritchie, KJ

Oxyresveratrol possesses DNA damaging activity

<http://researchonline.ljmu.ac.uk/id/eprint/13031/>

### Article

**Citation** (please note it is advisable to refer to the publisher's version if you intend to cite from this work)

**Radapong, S, Sarker, SD and Ritchie, KJ Oxyresveratrol possesses DNA damaging activity. *Molecules*. ISSN 1420-3049 (Accepted)**

LJMU has developed [LJMU Research Online](http://researchonline.ljmu.ac.uk/) for users to access the research output of the University more effectively. Copyright © and Moral Rights for the papers on this site are retained by the individual authors and/or other copyright owners. Users may download and/or print one copy of any article(s) in LJMU Research Online to facilitate their private study or for non-commercial research. You may not engage in further distribution of the material or use it for any profit-making activities or any commercial gain.

The version presented here may differ from the published version or from the version of the record. Please see the repository URL above for details on accessing the published version and note that access may require a subscription.

For more information please contact [researchonline@ljmu.ac.uk](mailto:researchonline@ljmu.ac.uk)

<http://researchonline.ljmu.ac.uk/>

# Oxyresveratrol Possesses DNA Damaging Activity

Sarayut Radapong <sup>1,2,\*</sup>, Satyajit D. Sarker <sup>2</sup> and Kenneth J. Ritchie <sup>2</sup>

<sup>1</sup> Medicinal Plant Research Institute, Department of Medical Sciences, Ministry of Public Health, Nonthaburi 11000, Thailand

<sup>2</sup> Centre for Natural Products Discovery, School of Pharmacy and Biomolecular Sciences, Liverpool John Moores University, Byrom Street, Liverpool L3 3AF, UK; S.Sarker@ljmu.ac.uk (S.D.S.); k.j.ritchie@ljmu.ac.uk (K.J.R.)

\* Correspondence: Sarayutradapong@gmail.com Tel +447378736587

Academic Editor: Muhammad Ilias

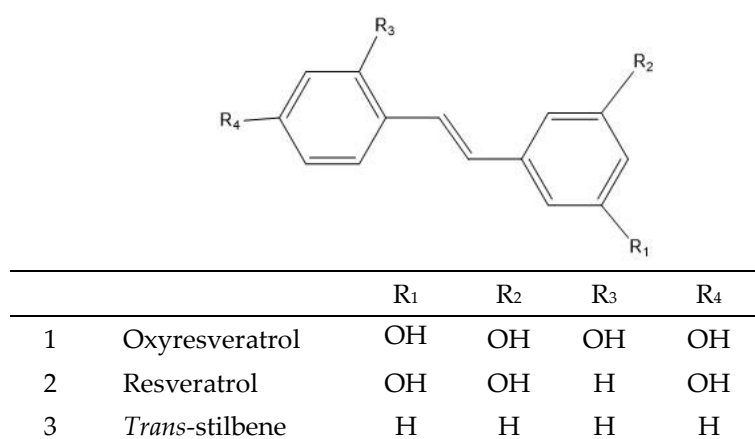
Received: 30 April 2020; Accepted: 29 May 2020; Published: date

**Abstract:** *Artocarpus lakoocha* Wall. ex Roxb. (family: Moraceae) has been used as a traditional Thai medicine for the treatment of various parasitic diseases. This species has been reported to be the source of phytochemicals, which show potent biological activities. The objective of this study was to investigate the phytochemical profile of the extracts of the heartwood of *A. lakoocha* and their pro-oxidant activity in vitro. The heartwood was ground, extracted, and then chromatographic and spectroscopic analyses were carried out; oxyresveratrol was identified as the major component in the extracts. The pro-oxidant activity was investigated using DNA-nick, reactive oxygen species and reducing assays. The results showed that oxyresveratrol induced DNA damage dose-dependently in the presence of copper (II) ions. It was also found to generate reactive oxygen species (ROS) in a dose-dependent manner and reduce copper (II) to copper (I). It is concluded that oxyresveratrol is the most abundant stilbenoid in *A. lakoocha* heartwood. The compound exhibited pro-oxidant activity in the presence of copper (II) ions, which may be associated with its ability to act as an anticancer compound.

**Keywords:** oxyresveratrol; *Artocarpus lakoocha*; DNA damaging; pro-oxidant.

## 1. Introduction

Oxyresveratrol belongs to the group of phytochemicals known as hydroxystilbenoids and has a molecular structure similar to the well-known phytochemical resveratrol. They are monomeric stilbene comprising two aromatic rings joined by an ethylene bridge, of which, the *trans* isomer is the most common configuration (Figure 1) [1]. The natural sources of these stilbenes are abundant in grapes, itadori, peanuts, and *A. lakoocha* [2–4]. The compounds demonstrate similar biological activities and are used in the treatment of atherosclerosis, inflammatory, pigmentation, and carcinogenesis [5]. Interestingly, however, several biological activities are unique to oxyresveratrol (antivirus and antihelminthics) [6,7]. Further, several reports suggest that oxyresveratrol or the heartwood extract of *A. lakoocha* might cause DNA damage and cause oxidative stress [8–10]. Previous studies report that resveratrol and its derivatives are capable of double-stranded DNA cleavage specifically in the presence of copper ions and oxygen [10]. Piceatannol, a resveratrol derivative, fragmented DNA in human peripheral blood [9]. Some polyphenolic compounds are already well-known to cause DNA damage and are being investigated as useful leads in the development of chemotherapeutic drugs [11]. In this study, we consequently investigated the ability of oxyresveratrol from the heartwood of *A. lakoocha* to induce DNA damage and the mechanism by which the damage occurs.

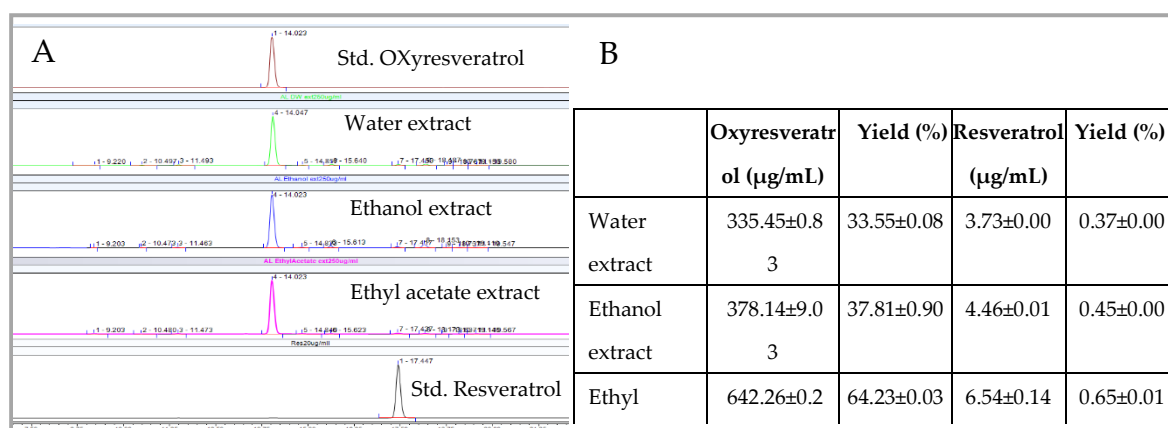


**Figure 1.** Chemical structure of oxyresveratrol, resveratrol and *trans*-stilbene.

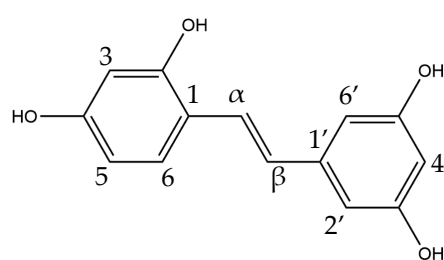
## 2. Results and discussion

### 2.1. HPLC analysis

Phytochemical profiling of *A. lackoocha* heartwood was carried out by HPLC. Each extract was investigated (water, ethanol and ethyl acetate) and found to contain one single dominant peak with a retention time consistent with that of the chromatographic standard of oxyresveratrol (Error! Reference source not found.A). The chromatographic standard of resveratrol was also used allowing accurate calculation of the amounts of each compound in each extract (Error! Reference source not found.B). Further authentication of the predominant peak was carried out using NMR with the <sup>13</sup>C NMR and <sup>1</sup>H-NMR; the chemical shifts and structure elucidated in Error! Reference source not found. were in good agreement with the standard. Mass spectra of the main peak detected at RT 14.0 supposed to be oxyresveratrol showed the spectra patterns were the same as the standard (showed in the Supplementary Materials). Its molecular formula C<sub>14</sub>H<sub>12</sub>O<sub>4</sub> was deduced from the ESI-MS spectrum in positive ion mode by the hydrated molecular ion peak at *m/z* 245 [M + H]<sup>+</sup>. The amount of oxyresveratrol in the plant was consistent with the range reported by Maneechai et al. [3], while the amount of resveratrol was lower compared to the report from Borah et al. [4].



**Figure 2.** Chemical profiles and contents of oxyresveratrol and resveratrol in *A. lakoocha* heartwood extracts. (A) Chemical profiles of the compounds in the extracts at 250 µg/mL were analysed by HPLC at a wavelength of 320 nm; water extract, ethanol extract, ethyl acetate extract, and standard oxyresveratrol and resveratrol at 10 µg/mL. (B) Amount of oxyresveratrol and resveratrol detected in *A. lakoocha* heartwood extracts.



Position	$\delta_c$	$\delta_H$ m (J in Hz)	Position	$\delta_c$	$\delta_H$ m (J in Hz)
1	116.4	-	1'	140.7	-
2	156.0	-	2'	104.6	6.53 dd (2.1, 2.5)
3	102.7	6.44 d (2.4)	3'	158.6	-
4	158.2	-	4'	101.4	6.24 t (2.1)
5	107.5	6.39 dd (2.4, 8.4)	5'	158.6	-
6	127.3	7.41 d (8.4)	6'	104.6	6.53 dd (2.1, 2.5)
$\alpha$	123.4	7.41 d (16.4)	2-OH		8.48 brs
$\beta$	125.4	6.89 d (16.4)	4-OH		8.30 brs
			3'-OH		8.09 brs
			5'-OH		8.09 brs

**Figure 3.**  $^{13}\text{C}$  NMR (300 MHz, Acetone- $d_6$ ) and  $^1\text{H}$  (300 MHz, Acetone- $d_6$ ) data of oxyresveratrol.

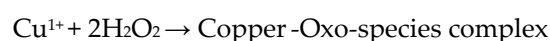
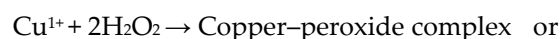
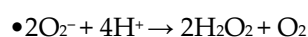
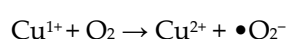
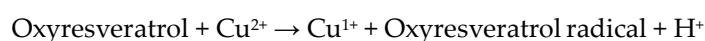
## 2.2. DNA Nicking Assay

The ability of oxyresveratrol to cause DNA damage in the presence of 50  $\mu\text{M}$  copper(II) was investigated (Figure 4A). Oxyresveratrol was consequently found to cause double-strand breaks in supercoiled plasmid DNA in a dose-dependent manner (lane 5–10); 200  $\mu\text{M}$  was the most effective at inducing this DNA damage, while no DNA damage was found at low oxyresveratrol concentrations (0.4–2  $\mu\text{M}$ ). The DNA damaging activity of oxyresveratrol was found to be dependent on the presence of Cu(II) ions, and not Fe(II) or Zn(II)(data not shown). Comparison of the DNA-damaging capacity of equivalent concentrations (50  $\mu\text{M}$ ) of stilbene derivatives revealed only DNA damage being induced by oxyresveratrol and resveratrol (Figure 4B), of which oxyresveratrol was the most damaging. The DNA-damaging capacity of a series of hydroxystilbenoids was previously investigated and in contrast to the data reported here resveratrol was found to be the most active [6]. The DNA-damaging capacity was specifically induced by copper ions, one of the most abundant metal ions in biological systems [12]. This raises the possibility that the DNA damage observed may be due to ROS generation via the Fenton reaction consistent previous observations made by Moran et al. [13] who observed similar findings with a number of other phenolic compounds.

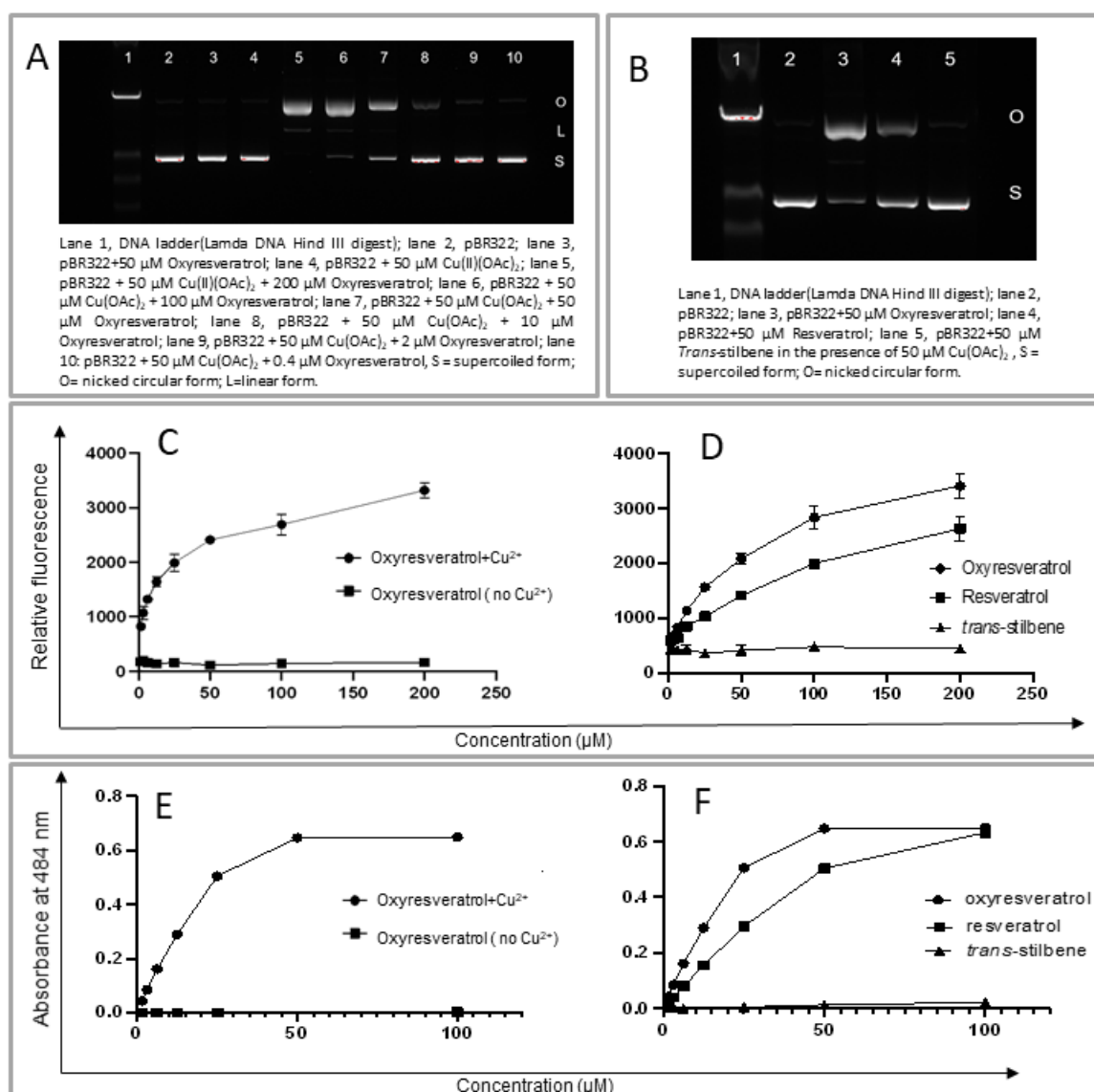
## 2.3. Pro-oxidant Activity of ROS Generation and Copper Reduction

Oxyresveratrol was found to generate ROS in the presence of copper(II) in a dose-dependent manner and in a higher amount compared to resveratrol and trans-stilbene (Figure 4C,D). The three extracts also exhibited ROS formation consistent with oxyresveratrol content (data not shown). Investigating the ability of oxyresveratrol to reduce  $\text{Cu}^{2+}$  ions, we report the amount of  $\text{Cu}^+$  produced by oxyresveratrol was dose-dependent (Figure 4E). Oxyresveratrol was also found to produce significantly higher amounts of copper (I) than resveratrol (Figure 4F). Trans-stilbene showed no copper-reducing activity; the ability of oxyresveratrol to generate ROS is consequently reported to be specifically induced by copper ions. Speculation exists as to the mechanism responsible although it

has been previously noted that copper–oxo complex or copper–peroxide complex have the capacity to cause DNA damage following the reactions shown in Scheme 1 [6,14,15]. However, the exact structural feature of the complexes that caused damage to the DNA is still unclear. Copper to some extent is well-known to be one of the transition metals playing an important role in biological functions. However, It has been reported that significantly elevated levels of copper have been found in both serum and tissue of cancer patients [16]. Moreover, elevated copper levels have been documented in breast, cervical, ovarian, lung, prostate, stomach cancers, and leukemia. Serum copper concentration has also been found to correlate with tumour incidence and burden; malignant progression in Hodgkin’s lymphoma; and leukemic, sarcoma, brain, breast, cervical, liver, and lung cancer [17]. The generation of ROS by stilbenoids in the presence of copper may be one of the key mechanisms by which they (stilbenoids) may be useful in the treatment of cancer.



**Scheme 1.** The assumed mechanism of oxyresveratrol for ROS production. The compound reduces cupric (II) into cuprous (I), then the cuprous reacting with O<sub>2</sub> generates superoxide radical (•O<sub>2</sub><sup>-</sup>); the radical causes direct oxidative stress or reacts to hydrogen ions presenting hydrogen peroxide (H<sub>2</sub>O<sub>2</sub>). Lastly, the cuprous ion and hydrogen peroxide in the reaction generates a copper–peroxide complex or copper oxo-species complex.



**Figure 4.** Effect of oxyresveratrol on DNA, ROS generation and copper reduction in cell-free assays. (A) DNA damage induced by oxyresveratrol at six concentrations of  $\text{Cu}(\text{OAc})_2$ . (B) Comparison of DNA damage induced by oxyresveratrol, resveratrol, and *trans-stilbene*. (C) Generation of ROS by oxyresveratrol in the presence or absence of  $\text{Cu}(\text{II})$ . (D) Comparison of generation of ROS by oxyresveratrol, resveratrol, and *trans-stilbene*. (E) Reduction of  $\text{Cu}(\text{II})$  by oxyresveratrol. (F) Comparison of copper-reducing ability of the three stilbenoids. Values express mean  $\pm$  SD ( $n = 3$ ).

### 3. Materials and Methods

#### 3.1. Standard

Oxyresveratrol (>97%), resveratrol, *trans-stilbene*, and copper acetate ( $\text{Cu}(\text{OAc})_2$ ) (99.99%) were purchased from Sigma-Aldrich (Buchs, Switzerland); pBR322 Supercoiled plasmid DNA was purchased from Thermo Fisher Scientific (Vilnius, Lithuania); deionized water (<18 M $\Omega$  cm resistivity) was obtained from the Milli-Q Element water purification system Millipore S.A.S. (Molchem, France).

#### 3.2. Plant Material

The heartwood of *A. lakoocha* was collected from Chanthaburi province, Thailand, in June 2018. The voucher specimen (DMSC 5237) was deposited at the DMSC International Herbarium, Department of Medical Sciences, Ministry of Public Health.

### 3.3. Extraction

The heartwood was ground into powder and dried until constant weight. The dried powder was refluxed with distilled water or ethanol (250 g of the powder: 3 L of the solvents) following the procedure modified from Borah et al. [4]. The other fraction was extracted by ethyl acetate using Soxhlet apparatus (800 g of the powder: 4.5 L of the solvents). All solvents were then filtered with Whatman™ filter paper. Finally, the three extracts were concentrated and dried by rotary evaporation or lyophilization.

### 3.4. Chemical Analysis

Analytical HPLC was performed on a Dionex UPLC 3000 (ThermoScientific, UK) HPLC coupled with a photo-diode-array (PDA) detector (ThermoScientific). Extracts were diluted in methanol and analysed on a Phenomenex C18 column (4.6 mm × 15 cm, 5 µm, Phenomenex, Torrance, CA, USA), flow rate 1 mL/min, mobile phase gradient of water (A) and acetonitrile (B) both containing 0.1% TFA: 10–50% B, 0–30 min; 100% B, 30–32 min; 100–10% B, 33–35 min, monitored at variable UV–vis wavelengths (210, 254, 280 and 320 nm). The column temperature was set at 25 °C. The NMR spectroscopic analysis was performed in acetone-*d*<sub>6</sub> solution on a Bruker AMX300 NMR spectrometer (300 MHz for <sup>13</sup>C and <sup>1</sup>H).

### 3.5. DNA Nicking Assay

The DNA break assay was modified from Subramanian et al. [10] using the reaction mixture of pBR322 plasmid DNA (200 ng) in the presence of Cu(OAc)<sub>2</sub> (50 µM) or 50 µM FeCl<sub>3</sub> or 50 µM ZnCl<sub>2</sub> in 10 mM HEPES buffer pH 7.2. The stock solutions of oxyresveratrol, resveratrol and *trans*-stilbenoid were prepared at the concentration of 1000 µM (1mM) in 1% DMSO/Milli-Q water. Whereas, *A. lakoocha* heartwood extracts were prepared at the concentration of 1.00 mg/mL in 1% DMSO/Milli-Q water. The reactions were initiated by adding 5 µL of each compound into 20 µL of the reaction mixture and incubated at 37 °C for 15 min. After the incubation, the products were loaded into 0.80% agarose gel subjected to electrophoresis at 75 V for 1.50 h. The image of the gel was quantified by Bio-Rad documentation imaging system (Hercules, CA, USA).

### 3.6. Reactive Oxygen Species Assay

2',7'-Dichlorodihydrofluorescein diacetate (H<sub>2</sub>DCFDA) was used to measure ROS generated in the reactions between oxyresveratrol in the presence or absence of copper (II) ions. The reaction was initiated by adding 50 µL of 200 µM Cu(II) or HEPES buffer into each reaction of 200 µL that contained oxyresveratrol or other derivatives. After the addition, the tubes were incubated at 37 °C for 15 min. Dichlorofluorescein (DCF), the fluorescence product of the reaction, was quantitated spectrofluorometric.

### 3.7. Copper Reducing Assay

Oxyresveratrol was colorimetrically determined using the Cu(I)-stabilizing reagent bathocuproine disulfonic acid. The reaction mixture (total volume for each tested concentration 200 µL) contained 50 µL of 2,000 mM (2M) bathocuproine disulfonic acid and 100 µL of oxyresveratrol in 10 mM HEPES buffer. The reaction was initiated by adding 50 µL of 200 mM Cu(OAc)<sub>2</sub> in the sample tubes and the absorbance of the mixture at 484 nm was read at the end of 5 min.

## 4. Conclusions

Oxyresveratrol was the major stilbenoid found in all three extracts tested (water, ethanol and ethyl acetate). The compound exhibited both dose-dependent DNA damage in the presence of copper ions and ROS generation. In consideration of these findings, it can be concluded that oxyresveratrol has the potential to be developed as a promising anticancer drug candidate.

**Supplementary Materials:** The following are available online, Figure S1: <sup>1</sup>H NMR Oxyresveratrol, Figure S2: <sup>13</sup>C NMR Oxyresveratrol, Figure S3: ESI-MS spectrum of standard oxyresveratrol, Figure S4: ESI-MS spectrum of the peak RT 14.0 in the water extract, Figure S5: ESI-MS spectrum of the peak RT 14.0 in the ethanol extract, Figure S6: ESI-MS spectrum of the peak RT 14.0 in the ethyl acetate extract.

**Author Contributions:** For research articles with several authors, a short paragraph specifying their individual contributions must be provided. The following statements should be used “Conceptualization, Sarayut Radapong, S.D.S. and K.J.R.; methodology, Sarayut Radapong and K.J.R.; software, K.J.R.; validation, Sarayut Radapong, S.D.S. and K.J.R.; formal analysis, Sarayut Radapong; investigation, Sarayut Radapong and K.J.R.; resources, Sarayut Radapong, S.D.S. and K.J.R.; data curation, Sarayut Radapong; writing—original draft preparation, Sarayut Radapong; writing—review and editing, S.D.S. and K.J.R.; visualization, Sarayut Radapong; supervision, S.D.S. and K.J.R.; project administration, K.J.R.; funding acquisition, S.D.S. and K.J.R.. All authors have read and agreed to the published version of the manuscript.”, please turn to the [CRediT taxonomy](#) for the term explanation. Authorship must be limited to those who have contributed substantially to the work reported.

**Funding:** This research was funded by The Royal Thai government, Thailand; in the PhD project no. R253184

**Acknowledgments:** The author would like to express profound gratitude to The Medicinal Plant Research Institute, Department of Medical Sciences, Thailand for providing the plant materials and identifying the plant species and the excellent support from Liverpool John Moores University for the laboratory facilities.

**Conflicts of Interest:** The authors declare no conflict of interest.

## References

1. Riviere, C.; Pawlus, A.D.; Merillon, J.-M., Natural stilbenoids: Distribution in the plant kingdom and chemotaxonomic interest in Vitaceae. *Nat. Prod. Rep.* **2012**, *29*, 1317–1333.
2. Burns, J.; Yokota, T.; Ashihara, H.; Lean, M.E.J.; Crozier, A., Plant Foods and Herbal Sources of Resveratrol. *J. Agric. Food Chem.* **2002**, *50*, 3337–3340.
3. Maneechai, S.; Likhitwitayawuid, K.; Sritularak, B.; Palanuvej, C.; Ruangrunsi, N.; Sirisa-Ard, P., Quantitative analysis of oxyresveratrol content in *Artocarpus lakoocha* and ‘Puag-Haad’. *Med Princ Pr.* **2009**, *18*, 223–7.
4. Borah, H.J.; Singhal, R.; Hazarika, S., *Artocarpus lakoocha roxb.*: An untapped bioresource of resveratrol from North East India, its extractive separation and antioxidant activity. *Ind. Crop. Prod.* **2017**, *95*, 75–82.
5. Akinwumi, B.C.; Bordun, K.-A. M.; Anderson, H.D., Biological activities of stilbenoids. *Int. J. Mol. Sci.* **2018**, *19*, 792/1–792/25.
6. Galindo, I.; Hernaez, B.; Berna, J.; Fenoll, J.; Cenis, J.L.; Escribano, J.M.; Alonso, C., Comparative inhibitory activity of the stilbenes resveratrol and oxyresveratrol on African swine fever virus replication. *Antivir. Res.* **2011**, *91*, 57–63.
7. Preyavichyapugdee, N.; Sangfuang, M.; Chaiyapum, S.; Sriburin, S.; Pootaeng-on, Y.; Chusongsang, P.; Jiraungkoorskul, W.; Preyavichyapugdee, M.; Sobhon, P., SCHISTOSOMICIDAL ACTIVITY OF THE CRUDE EXTRACT OF *ARTOCARPUS LAKOOCHA*. *Southeast Asian J Trop Med Public Health* **2016**, *47*, 1–15.
8. Singhatong, S.; Leelarungrayub, D.; Chaiyasut, C., Antioxidant and toxicity activities of *Artocarpus lakoocha* Roxb. heartwood extract. *J. Med. Plants Res.* **2010**, *4*, 947–953.
9. Azmi, A.S.; Bhat, S.H.; Hadi, S.M., Resveratrol-Cu(II) induced DNA breakage in human peripheral lymphocytes: Implications for anticancer properties. *Febs Lett.* **2005**, *579*, 3131–3135.
10. Subramanian, M.; Shadakshari, U.; Chattopadhyay, S., A mechanistic study on the nuclease activities of some hydroxystilbenes. *Bioorg. Med. Chem.* **2004**, *12*, 1231–1237.
11. Yamada, K.; Shirahata, S.; Murakami, H.; Nishiyama, K.; Shinohara, K.; Omura, H., DNA breakage by phenyl compounds. *Agric. Biol. Chem.* **1985**, *49*, 1423–8.
12. Kalinowski, D.S.; Stefani, C.; Toyokuni, S.; Ganz, T.; Anderson, G.J.; Subramaniam, N.V.; Trinder, D.; Olynyk, J.K.; Chua, A.; Jansson, P.J.; et al. Redox cycling metals: Pedaling their roles in metabolism and their use in the development of novel therapeutics. *Biochim. Biophys. ActaMol. Cell Res.* **2016**, *1863*, 727–748.



13. Moran, J.F.; Klucas, R.V.; Grayer, R.J.; Abian, J.; Becana, M., Complexes of iron with phenolic compounds from soybean nodules and other legume tissues: Prooxidant and antioxidant properties. *Free Radic. Biol. Med.* **1997**, *22*, 861–870.
14. Alarcon de la lastra, C.; Villegas, I., Resveratrol as an antioxidant and pro-oxidant agent: Mechanisms and clinical implications. *Biochem. Soc. Trans.* **2007**, *35*, 1156–1160.
15. Valko, M.; Izakovic, M.; Mazur, M.; Rhodes, C.J.; Telser, J., Role of oxygen radicals in DNA damage and cancer incidence. *Mol. Cell. Biochem.* **2004**, *266*, 37–56.
16. Kuo, H.W.; Chen, S.F.; Wu, C.C.; Chen, D.R.; Lee, J.H., Serum and tissue trace elements in patients with breast cancer in Taiwan. *Biol. Trace Elem. Res.* **2002**, *89*, 1–11.
17. Gupte, A.; Mumper, R.J., Elevated copper and oxidative stress in cancer cells as a target for cancer treatment. *Cancer Treat. Rev.* **2009**, *35*, 32–46.

**Sample Availability:** Samples of the compounds are not available from the authors.



© 2020 by the authors. Submitted for possible open access publication under the terms and conditions of the Creative Commons Attribution (CC BY) license (<http://creativecommons.org/licenses/by/4.0/>).