

Original Paper

Digital Versus Conventional Rehabilitation After Total Hip Arthroplasty: A Single-Center, Parallel-Group Pilot Study

Fernando Dias Correia¹, MD; André Nogueira², MPhysio; Ivo Magalhães², MPhysio; Joana Guimarães², MPhysio; Maria Moreira², MPhysio; Isabel Barradas², MPhysio; Maria Molinos², PhD; Laetitia Teixeira^{3,4,5}, PhD; Joaquim Pires⁶, MD; Rosmaninho Seabra⁶, MD; Jorge Lains⁷, MD; Virgílio Bento⁸, PhD

¹Neurology Department, Hospital de Santo António-Centro Hospitalar do Porto, Porto, Portugal

²SWORD Health, Porto, Portugal

³Department of Population Studies, Abel Salazar Institute of Biomedical Sciences, Porto, Portugal

⁴Centro de Investigação em Tecnologias e Serviços de Saúde, Abel Salazar Institute of Biomedical Sciences, University of Porto, Porto, Portugal

⁵EPIUnit, Instituto de Saúde Pública, Universidade do Porto, Porto, Portugal

⁶Orthopaedics Department, Hospital da Prelada-Domingos Braga da Cruz, Porto, Portugal

⁷Physical Rehabilitation Medicine Department, Rovisco Pais Medical and Rehabilitation Centre, Tocha, Portugal

⁸Engineering Department, Instituto Universitário da Maia, Maia, Porto, Portugal

Corresponding Author:

Fernando Dias Correia, MD

Neurology Department

Hospital de Santo António-Centro Hospitalar do Porto

Largo Professor Abel Salazar

4099-001

Porto,

Portugal

Phone: 351 966557789

Email: fanacorreia@gmail.com

Abstract

Background: The demand for total hip arthroplasty (THA) is rising. In the face of rapidly increasing health care costs, ensuring widespread, cost-effective rehabilitation is a priority. Technologies allowing independent home-based rehabilitation may be the key to facilitate access, improve effectiveness, and lower costs of care.

Objective: The aim of this study was to assess the feasibility of a novel artificial intelligence-powered digital biofeedback system following THA and compare the clinical outcomes against supervised conventional rehabilitation.

Methods: This was a single-center, parallel-group pilot study, with an 8-week intervention program. Patients were assessed at baseline, during the program (at 4 and 8 weeks), and 3 and 6 months after surgery. The primary outcome was the Timed Up and Go (TUG) score and secondary outcomes were the Hip dysfunction and Osteoarthritis Outcome Scale (HOOS; a patient-reported outcome) and hip range of motion (ROM).

Results: A total of 66 patients were included: 35 digital physiotherapy (PT) versus 31 conventional. There were no differences at baseline between groups except for lower HOOS quality of life (QoL) subscale scores in the digital PT group. Clinically relevant improvements were noted in both groups at all time points. The digital PT group showed a retention rate of 86% (30/35). Per-protocol analysis revealed a superiority of the digital PT group for all outcome measures. Intention-to-treat analysis revealed the superiority of the digital PT group at all time points for TUG (change between baseline and 4 and 8 weeks: $P < .001$; change between baseline and 3 and 6 months: $P = .001$ and $P = .005$, respectively), with a difference between median changes of -4.79 seconds (95% CI -7.24 to -1.71) at 6 months post-THA. Between baseline and month 6, results were also superior in the digital PT group for the HOOS sports and QoL subscales and all ROM except for standing flexion.

Conclusions: This study demonstrates this novel solution holds promise in rehabilitation after THA, ensuring better clinical outcomes than conventional rehabilitation while reducing dependence on human resources.

Trial Registration: ClinicalTrials.gov NCT03045549; <https://clinicaltrials.gov/ct2/show/NCT03045549>

KEYWORDS

THA; THR; digital physiotherapy; telerehabilitation; biofeedback; motion trackers; AI-powered rehabilitation

Introduction

The demand for total hip arthroplasty (THA) is rising [1,2]. By 2030, primary THA in the United States is estimated to increase by 174% and revision THA by 137% compared to 2005 [2], to approximately 572,000 primary and 96,700 revision procedures per year [2].

The efficacy of THA is well documented [3-5], and rehabilitation is key to optimize outcomes [6,7]. Furthermore, studies indicate that more intensive and early progressive exercise leads to better outcomes [8,9], greater satisfaction and adherence [10,11], and reduction of complications and expenses [11,12]. In an expert consensus on best practices for rehabilitation after THA, the greatest support was for 4 to 8 weeks of therapeutic exercise, two to three times per week [13].

In the face of rapidly increasing health care costs, ensuring widespread cost-effective rehabilitation is a priority, but putting this into effect constitutes a challenge, both in terms of logistics and costs.

In recent years, telerehabilitation solutions (ie, rehabilitation services delivered at home from a remote location through a telecommunication system and information technology [14]) have been developed that allow professionals to remotely monitor rehabilitation programs [15-17]. These solutions have demonstrated a potential to reduce health care costs associated with supervision, facility provision, and transport of patients [18-21], while yielding similar, but not superior, clinical outcomes as conventional physical therapy post-THA [22,23].

Using a different approach, several authors have compared unsupervised home-based programs with physiotherapist-led outpatient rehabilitation programs, with both cases showing similar results for patients who comply with their program [21,24-26]. However, in studies comparing supervised with unsupervised training, or no recommended training at all, there is high variability in adherence rates, which is a well-accepted key determinant to therapy success [27-29], ranging from 23% to 85% [8,27,30,31].

More advanced technological solutions have emerged that incorporate biofeedback systems with the intent of increasing both patient performance and adherence [17,32,33] to maximize outcomes. Promising as these may be, they are generally poorly interactive and show low-level evidence, with no long-term validation studies available.

In a previous study, we tested a novel digital biofeedback system based on inertial motion trackers that enables independent home-based physical rehabilitation with remote monitoring from a clinical team after total knee arthroplasty (TKA) [34]. In this study (N=59; NCT03047252), we compared the digital system to conventional, face-to-face, home-based rehabilitation post-TKA over an 8-week program. The results demonstrated that this solution was safe and very well-accepted, with high

adherence and satisfaction levels and, most importantly, that the clinical outcomes were superior to conventional rehabilitation [34]. These encouraging results prompted further studies, with the intent of validating this solution in other therapeutic scenarios.

The aim of this single-center, parallel-group pilot study is to assess patient uptake and system safety in patients undergoing THA, as well as to compare the clinical outcomes of a home-based program using this digital physiotherapy (PT) system against conventional, in-person, home-based rehabilitation after THA.

Methods

Study Design

This was a single-center, parallel-group pilot study. It was designed to assess patient uptake and safety of a digital physiotherapy system, as well as to compare the clinical outcomes of a home-based program using a home-based digital program compared with conventional, in-person, home-based rehabilitation after THA.

Study Timeline

All consecutive patients admitted for THA between December 19, 2016 and January 16, 2018, were screened preoperatively and postoperatively for eligibility at Hospital da Prelada, Porto, Portugal, by the two orthopedic surgeons that oversaw the study (JP and RS). Completion date for the 6-month follow-up assessment was July 16, 2018.

Inclusion and Exclusion Criteria

All patients included in this study were referred to post-THA rehabilitation by two independent physicians. Patients were included if they were (1) aged 18 years or older and had (2) clinical and imaging (CT) evidence of hip osteoarthritis as assessed by the orthopedic surgeon, (3) indication for THA according to the patient's orthopedic surgeon, (4) ability to walk (unaided or with assistive device), and (5) availability of a caregiver to assist the patient after surgery.

Exclusion criteria were (1) admitted for revision THA; (2) contralateral hip or knee osteoarthritis severely limiting patient mobility and ability to comply with a rehabilitation program; (3) aphasia, dementia, or psychiatric comorbidity interfering with communication or adherence to the rehabilitation process; (4) respiratory, cardiac, metabolic, or other condition incompatible with at least 30 minutes of light to moderate physical activity; (5) major medical complications occurring after surgery that prevented the discharge of the patient within 10 days after the surgery; (6) other medical or surgical complications that prevent the patient from complying with a rehabilitation program; and (7) blindness or illiteracy.

Patient Allocation

Patients were recruited at Hospital da Prelada, Porto, Portugal. Patient allocation was performed using patient address as the criterion. Those patients residing in areas outside the administrative limits of the city of Oporto were allocated to the digital PT group, whereas those residing within the city limits were allocated to the conventional rehabilitation group. Patient allocation was performed centrally by one investigator (FDC) and communicated to the responsible physiotherapist only after patient enrollment.

Blinding

The nature of the study did not allow blinding of the patients. Patient assessment was performed by two investigators (JP and RS), who were blinded to the study groups. Statistical analysis was performed by a blinded statistician (LT).

Intervention

After the initial assessment, all patients were submitted to elective THA. Surgical technique was the same for all patients—direct lateral approach under regional anesthesia.

Between day 1 postop and hospital discharge, all patients were taught how to safely get in and out of bed and were asked to perform alternate ankle flexion and extension exercises regularly. All patients performed initial gait training with canes.

After hospital discharge, both groups received an 8-week rehabilitation program starting between day 7 and day 10 after surgery (see [Multimedia Appendix 1](#)). These were designed based on the results of a Delphi panel on best practices for rehabilitation after THA [13] and the protocols published by SOFMER, the French Physical and Rehabilitation Medicine Society [35].

In the digital PT group, patients received an initial visit from the physical therapist to assess specific needs and to teach patients and caregivers how to set up and use the system. Patients then performed exercise sessions independently, using the system, under asynchronous remote monitoring from the physical therapist (see [Multimedia Appendix 1](#) for more details). Patients were instructed to exercise 5 to 7 days per week, minimum 30-minute sessions, but they were not excluded in case of lower adherence. Each patient received a telephone call on weeks 2 and 6 to check on patient adaptation, review the program, and assess adverse events; a face-to-face visit on week 4 to perform an in-depth review of the program; and a termination visit to collect the system. Additional visits were performed when required.

The conventional rehabilitation group received a home-based supervised program provided by a physiotherapist, three times a week, for 1 hour (see [Multimedia Appendix 1](#) for more details). Patients were also instructed to perform additional sessions on at least two other days of the week. These were nonmandatory, and no record of these sessions was kept.

Outcomes Assessment

Total Therapist Time

Total therapist time was calculated in both groups, considering the time spent on face-to-face contacts and spent in travel and

on calls. For the digital intervention group, time spent per patient in the Web-based portal was also calculated.

Safety and Adverse Events

In the digital PT group, patients were asked to rate pain and fatigue on a scale from zero to 10 at the end of each session. These were available for remote monitoring through the portal. Patients were also given the direct contact of the assigned physical therapist to report adverse events: pain during exercise, falls, and other medical complications (eg, inflammatory signs or infection on the surgical wound or operated member; thrombophlebitis).

Patients in the conventional rehabilitation group performed supervised sessions by a physical therapist, enabling early adverse event detection and reporting.

Primary and Secondary Outcomes

For primary outcome, we chose a performance test—the Timed Up and Go (TUG) test [36], which measures patient mobility and consists of the time it takes to rise from a chair, walk 3 meters, turn around, walk back to the chair, and sit down. This test is among the most recommended outcome measures to routinely assess or monitor outcomes after primary THA [13]. It is simple, practical, and quick and easy to administer, plus it has been demonstrated to predict both short- [37] and long-term [38] function following hip arthroplasty. Importantly, it has also shown excellent interrater (intraclass correlation [ICC] ≥ 0.9) and very good test-retest (ICC 0.8-0.89) reliability in patients with elective hip replacement (N=100) [39], and higher sensitivity to change in performance after THA than other commonly used self-reported measures, such as the Western Ontario and McMaster Universities Osteoarthritis Index (WOMAC) and the Lower Extremity Functional Scale (LEFS) [40]. Moreover, Podsiadlo and Richardson [36] confirmed its content validity in elderly persons (N=60), in that it evaluated a well-recognized series of maneuvers used in daily life.

Secondary outcomes were (1) patient-reported outcomes, measured by the Hip dysfunction and Osteoarthritis Outcome Scale (HOOS) [41] and (2) hip range of motion (ROM).

The HOOS consists of five subscales: (1) pain, (2) symptoms, (3) function in activities of daily living (ADL), (4) function in sport and recreation (sport), and (5) hip-related quality of life (QoL). Patients are asked to answer this disease-specific questionnaire, based on the previous week, with standardized options for each question (each is assigned a score from 0-4). A normalized score (100 indicating no symptoms and 0 indicating extreme symptoms) is calculated for each subscale. This scale has shown high test-retest reproducibility for people with hip disability with or without hip osteoarthritis, with ICC ranging from 0.75 to 0.97 for all subscales [41]. The HOOS content validity was tested by Nilsson and colleagues [42] in patients assigned to THA (n=90), by asking them to rate the importance of each item. All items were considered to be of at least some importance by more than 67% of the patients, the limit set to justify inclusion into the HOOS. All items included in the pain (10/10), ADL (17/17), sport (5/5), QoL (4/4), and most items included in symptoms (4/5), were considered at least somewhat important by more than 80% of patients.

The SWORD device was used in both groups to measure active hip ROM. This device has been certified for use as an angle-measurement tool, with a reported root mean square error of 3.5° compared with standard goniometry in the technical file. Active hip ROM was measured in degrees in the following exercises: lying and standing hip flexion, lying and standing hip abduction, and standing hip hyperextension. For each exercise, the patient was asked to perform three repetitions by itself; the best value of the three was recorded.

Patients were assessed at baseline (preoperatively), 4 weeks after initiation of rehabilitation, at the end of the 8-week program, and at 3- and 6-months follow-up evaluations.

Sample Size Estimation

Calculations were performed taking into consideration the primary outcome measure—TUG—and based on a minimal detectable change of 2.49 seconds, as reported by Kennedy et al [43] on a longitudinal study evaluating outcomes following total hip and knee arthroplasty. Considering an effect size of 0.65, a power of 80%, and a two-sided .05 significance level, 60 patients (30 in each group) would be necessary to detect a difference of 2.49 seconds between the two groups. Considering a dropout rate of 15%, the target recruitment was 70 patients.

Statistical Analysis

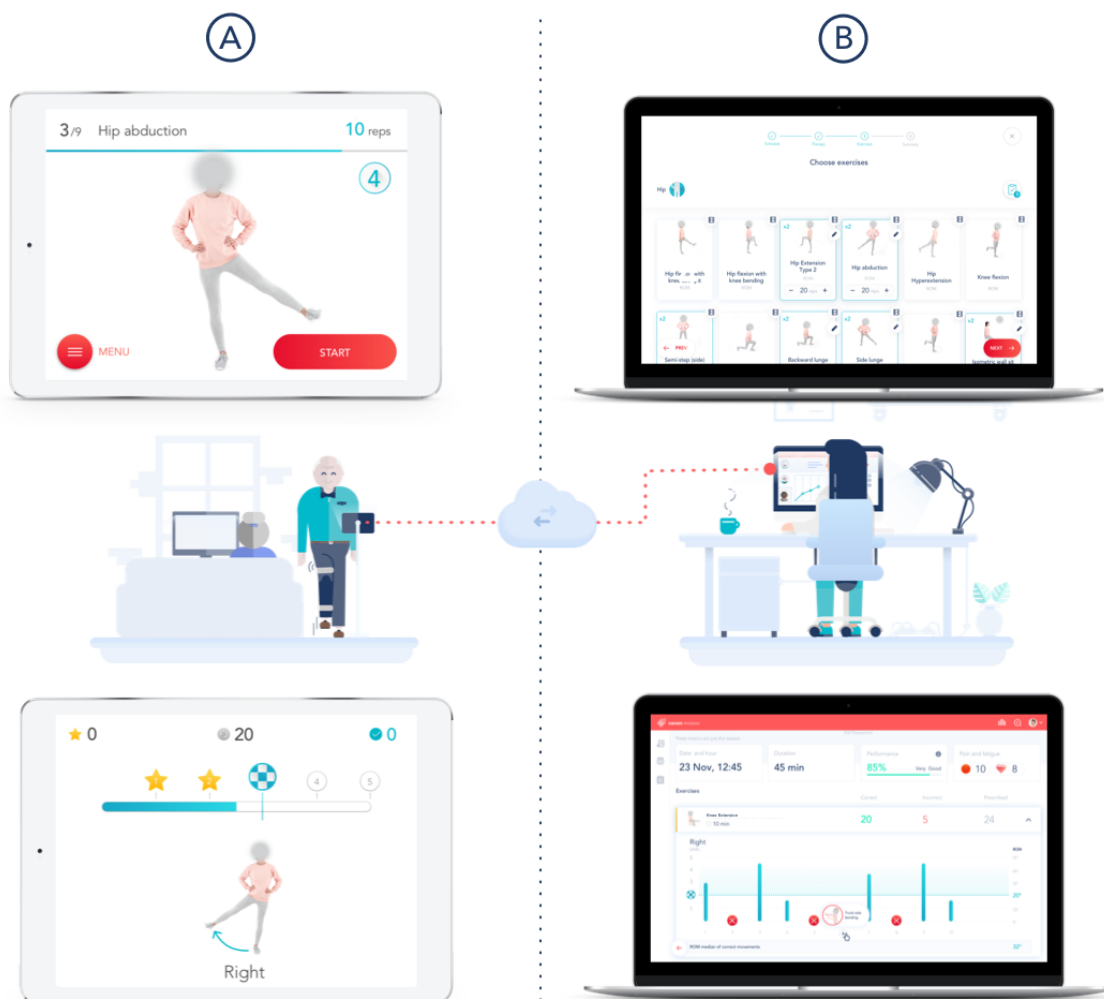
To assess differences in clinical and demographic variables of the patients allocated to the two study groups, independent samples *t* test or Mann-Whitney *U* test were used for quantitative variables. For categorical variables, chi-square test or Fisher exact test were used.

Outcome analysis was performed using both an intention-to-treat analysis and a per-protocol analysis. Differences between interventions were evaluated using independent samples *t* test or Mann-Whitney *U* test. For nonnormally distributed variables, the magnitude of the difference in the medians was assessed using Hodges-Lehman estimator. Additionally, a repeated measures ANOVA was also performed, with group as an independent factor and time as a within-subjects factor. When necessary, logarithm transformation was performed to obtain normally distributed variables. In all analysis, a significance level of .05 was considered. Statistical analysis was performed using IBM SPSS version 24.0.

System Technical Specifications

The system consisted of the elements described subsequently (Figure 1).

Figure 1. System components. (A) Mobile app. Preparation screen (top left): this screen displays video and audio instructions for each exercise. Execution screen (bottom left). (B) Web portal. Prescription screen (top right) displaying the exercise list and session layout. Results screen (bottom right) presenting (1) date, time, and session duration; (2) pain and fatigue scores; and (3) information on each repetition—range of motion and movement errors.



Inertial Motion Trackers

Each tracker consisted of a gyroscope, an accelerometer, and a magnetometer, which enabled precise movement quantification. The trackers were placed on body segments using Velcro straps in three specific positions: (1) over the sternal manubrium (red tracker), (2) on the anterior surface of the hip (green tracker), and (3) over the anterior tibial crest (blue tracker).

Mobile App

The app guided the patient through the session, providing video and audio instructions before each exercise, as well as real-time audio and video biofeedback during the exercise. If the patient performed a movement error or assumed an incorrect posture, an error message was displayed, allowing the patient to correct the movement in the following attempts.

Web-Based Portal

The portal enabled remote result monitoring and exercise prescription/edition by the clinical teams.

Ethics Approval of Research

The study was approved by the National Data Protection Commission (authorization number 1476/2017) and by the local ethics committee at Hospital da Prelada (Chair: Dr Juiz Conselheiro Almeida Lopes). The methods were conducted in accordance with the approved guidelines. All patients and

caregivers were provided with information about the purpose and procedures of the study and provided written informed consent before inclusion. All patient data were anonymized and linked to the patient by a unique study number that did not contain any personal identifiers.

Data Availability

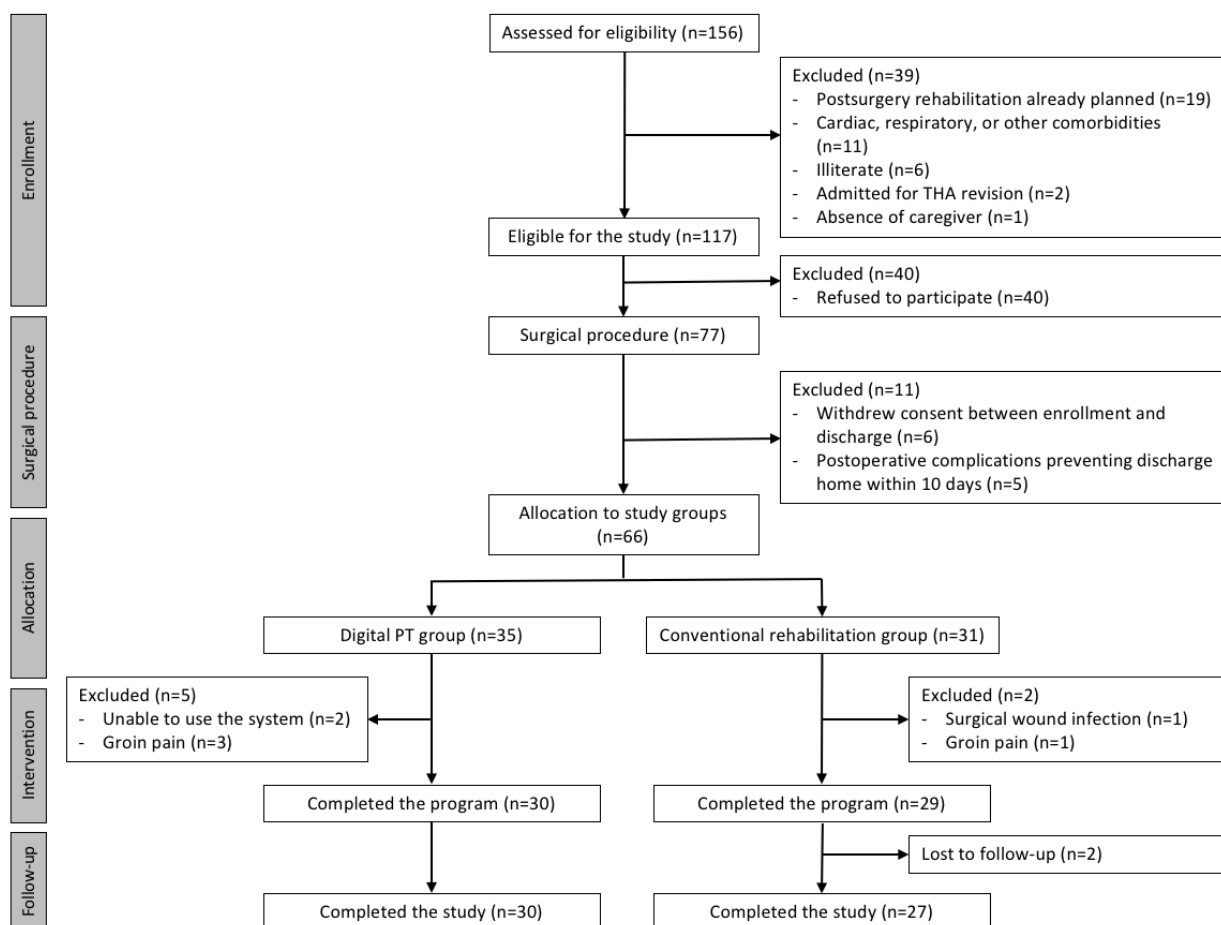
Individual participant data that underlie the results reported in this article will be shared after deidentification as supplementary information (Multimedia Appendix 2) of this paper. Other documents, namely the study protocol, Consolidated Standards of Reporting Trials (CONSORT) details, will also be made permanently available immediately following publication, either through the online version of this paper or at ClinicalTrials.gov (UI: NCT03045549).

Results

Overview

A total of 156 patients were assessed for eligibility between December 19, 2016 and January 16, 2018. Figure 2 shows the CONSORT diagram for the study (see also Multimedia Appendix 3). The study inclusion rate was of 42% (66/156). Between initial assessment and patient allocation, 90 patients refused to participate or withdrew consent, corresponding to 58% of all screening failures.

Figure 2. CONSORT (Consolidated Standards of Reporting Trials) diagram. PT: physiotherapy; THA: total hip arthroplasty.



Overall, 66 patients were included (35 in the digital PT group versus 31 in conventional rehabilitation). The dropout rate in the digital PT group was 14% (5/35): two patients did not adapt to the system and withdrew consent in the first week and three were excluded due to groin pain. The dropout rate in the conventional rehabilitation group was 6% (2/31): two patients were excluded, one due to a surgical wound infection requiring readmission and another due to groin pain. In total, 59 patients completed the study (30 versus 29) and 57 completed the follow-up assessments—two patients in the conventional rehabilitation group were lost to follow-up between the 3- and 6-month assessments.

Study Population Characteristics

Baseline characteristics of study participants regarding demographics, comorbidities, and risk factors for adverse events, as well as data on hospitalization and surgery are summarized in Table 1 (divided by allocation group). There were no differences at baseline between the two study groups regarding any population characteristics.

Independence of Use

In the digital PT group, 13 of 35 patients (37%) required the assistance of a caregiver for tracker or strap placement or navigation. Patients requiring assistance were older (mean age 68.0, SD 7.6 years versus mean 57.7, SD 6.6; $P=.001$).

Table 1. Baseline characteristics of study participants (N=66).

Population characteristics	Digital physiotherapy group (n=35)	Conventional rehabilitation (n=31)	P value
Demographics			
Age (years), mean (SD)	62.4 (8)	66.6 (10)	.07 ^a
Gender (female), n (%)	15 (43)	16 (2)	.64
Operated hip side (right), n (%)	16 (46)	12 (39)	.74
Comorbidities and known risk factors for adverse events			
Body mass index, mean (SD)	28.3 (3)	27.4 (4)	.31 ^a
Smoking, n (%)	2 (6)	7 (23)	.07 ^b
Hypertension, n (%)	14 (40)	12 (39)	>.99
Diabetes, n (%)	11 (31)	7 (23)	.59
Pulmonary disease, n (%)	1 (3)	1 (3)	>.99
Cardiac disease, n (%)	3 (9)	5 (16)	.46 ^b
Stroke, n (%)	1 (3)	0.0	— ^c
Renal disease, n (%)	0.0	0.0	—
Bleeding disorders, n (%)	0.0	2 (6)	—
ASA ^d (class 3 or 4), n (%)	8 (23)	10 (32)	.56
Steroids for chronic condition, n (%)	0	0	—
Previous contralateral hip replacement, n (%)	7 (20)	5 (16)	.93
Previous knee replacement, n (%)	1 (3)	0	—
Hospital admission and surgical procedure			
Time between admission and surgery (hours)	<24	<24	—
Operative time (min), mean (SD)	63.7 (19)	59.9 (9)	.10 ^a
Noncemented prosthesis, n (%)	2 (6)	2 (6)	>.99
Minor adverse events before discharge, n (%)	0.0	0.0	—
Length of stay (days), median (IQR ^e)	6.0 (2)	6.0 (1)	.43 ^f

^aIndependent sample *t* test.

^bFisher exact test.

^cNot applicable.

^dAmerican Society of Anesthesiology physical status classification system.

^eIQR: interquartile range.

^fMann-Whitney *U* test.

Adherence to the Intervention

Only five patients (17%) did not comply with the recommended session frequency of five times per week.

Patient Satisfaction

Patients in the digital PT group were asked to report their satisfaction level by answering the question: "On a scale from 0-10 ('0' meaning that you would not recommend and '10' that you would highly recommend), how much would you recommend the system to one of your friends or neighbors?" Of the 35 patients in this group, 32 (91%) rated the system as 10, two patients rated the system as 9, and one did not answer.

Therapist-Patient Interaction

Patients in the conventional rehabilitation group had 24 in-person sessions, whereas patients in the digital PT group had 3 face-to-face contacts with the therapist and, on average, 0.6 (range 0-2) extra contacts for technical assistance. Regarding telephone calls, in addition to the two scheduled calls per protocol, each patient received a median of four extra calls (range 0-7), the vast majority due to difficulties in interacting with the system.

Treatment Intensity

Total active treatment time was similar in both groups in both intention-to-treat (ITT) and per-protocol analysis (ITT: $P=.11$; per protocol: $P=.24$). In the ITT analysis, treatment intensity in the digital PT group was 20 hours (interquartile range [IQR] 11.0, range 1.0-59.0) and in the per-protocol analysis was 21 hours (IQR 10.3, range 8.0-59) versus 24 hours in the conventional PT group.

Outcomes Assessment

Total Therapist Time

Total therapist time was lower in the digital intervention group (mean 6.5, IQR 1.2 hours versus mean 32.1, IQR 5.2 hours; $P<.001$).

Safety and Adverse Events

For all patients enrolled in the study (66 patients), there was no significant difference between groups for safety and adverse events ($P>.99$).

In the digital PT group, the adverse event rate was 14% (5/35). Three patients were excluded due to significant pain during hip abduction, without inflammatory or other warning signs. All three patients recovered spontaneously within 2 weeks. One patient reported inflammatory signs over the surgical wound and another suffered a fall (not during system use), with no need for hospital assistance.

In the conventional rehabilitation group, the adverse event rate was 23% (7/31). One patient required hospital readmission and a revision procedure due to a surgical wound infection, one was excluded due to groin pain, two patients reported inflammatory signs over the surgical wound, one patient had a thrombophlebitis, one reported a unilateral lower limb edema (with spontaneous recovery), and one patient suffered a fall, with no need for hospital assistance.

Primary and Secondary Outcomes

Baseline

There were no differences between the two groups regarding outcome measures, except for the HOOS QoL subscale ($P=.03$; see Tables 2-4). The median difference between the TUG scores in the two groups was of 2.34 seconds (95% CI -0.69 to 5.17) in favor of the conventional rehabilitation group. Taking into consideration the 2.49 seconds reported as minimal detectable change for this test [43], this difference is neither statistically nor clinically significant.

Table 2. Primary outcome assessment of Timed Up and Go (TUG) test: intention-to-treat analysis (N=66).

Time point	TUG time (seconds), median (IQR) ^a		<i>P</i> value ^b	Estimate difference between groups (95% CI)
	Digital PT ^c group (n=35)	Control group (n=31)		
Baseline	17.50 (6.33)	14.89 (9.42)	.12	2.34 (-0.69, 5.17)
Short term				
8 weeks	7.26 (2.15)	11.03 (6.84)	<.001	-3.34 (-5.14, -1.70)
Change baseline-8 weeks	-10.50 (7.45)	-2.90 (7.10)	<.001	-6.33 (-8.79, -3.42)
Medium term				
6 months	6.38 (2.30)	8.20 (4.22)	<.001	-1.87 (-3.02, -0.62)
Change baseline-6 months	-10.50 (7.39)	-5.10 (6.94)	.005	-4.79 (-7.24, -1.71)

^aIQR: interquartile range.

^bMann-Whitney *U* test.

^cPT: physiotherapy.

Table 3. Secondary outcome of patient-reported Hip dysfunction and Osteoarthritis Outcome Scale (HOOS): intention-to-treat analysis (N=66).

Time point and variable	Score, median (IQR ^a)		P value ^b	Estimate difference between groups (95% CI)
	Digital PT ^c group (n=35)	Control group (n=31)		
Baseline				
Symptoms	35.0 (20.0)	40.0 (30.0)	.12	-10.0 (-20.0, 0.0)
Pain	33.0 (13.0)	33.0 (35.0)	.50	-3.0 (-13.0, 5.0)
Activities of daily living	29.0 (15.0)	28.0 (28.0)	.75	1.0 (-6.0, 7.0)
Sports	0.0 (6.0)	0.0 (19.0)	.34	0.0 (0.0, 0.0)
Quality of life	13.0 (13.0)	19.0 (25.0)	.03	-6.0 (-13.0, 0.0)
8 weeks				
Symptoms	100.0 (5.0)	95.0 (20.0)	.01	5.00 (0.0, 10.0)
Pain	100.0 (7.0)	98.0 (12.0)	.24	0.0 (0.0, 5.0)
Activities of daily living	93.0 (11.0)	82.0 (14.0)	<.001	9.0 (4.0, 13.0)
Sports	50.0 (18.0)	38.0 (19.0)	.004	12.0 (6.0, 19.0)
Quality of life	81.0 (19.0)	69.0 (31.0)	.08	6.0 (0.0, 18.0)
Change baseline-8 weeks				
Symptoms	60.0 (30.0)	45.0 (30.0)	.06	10.0 (0.0, 20.0)
Pain	60.0 (22.0)	60.0 (32.0)	.75	2.0 (-10.0, 10.0)
Activities of daily living	56.0 (23.0)	57.0 (27.0)	.63	-2.0 (-10.0, 6.0)
Sports	44.0 (25.0)	38.0 (25.0)	.26	6.0 (-6.0, 13.0)
Quality of life	63.0 (31.0)	50.0 (25.0)	.46	6.0 (-6.0, 13.0)
6 months				
Symptoms	100.0 (5.0)	95.0 (10.0)	.20	0.0 (0.0, 5.0)
Pain	100.0 (5.0)	100.0 (7.0)	.75	0.0 (0.0, 0.0)
Activities of daily living	96.0 (11.0)	88.0 (19.0)	.02	4.0 (0.0, 10.0)
Sports	75.0 (32.0)	50.0 (32.0)	.01	19.0 (6.0, 37.0)
Quality of life	94.0 (12.0)	81.0 (19.0)	.02	7.0 (0.0, 19.0)
Change baseline-6 months				
Symptoms	60.0 (25.0)	45.0 (30.0)	.06	10.0 (0.0, 20.0)
Pain	65.0 (18.0)	53.0 (30.0)	.21	7.0 (-5.0, 17.0)
Activities of daily living	63.0 (22.0)	56.0 (25.0)	.10	7.0 (-1.0, 15.0)
Sports	69.0 (31.0)	38.0 (38.0)	.004	25.0 (7.0, 37.0)
Quality of life	75.0 (32.0)	56.0 (31.0)	.01	19.0 (6.0, 25.0)

^aIQR: interquartile range.^bMann-Whitney *U* test.^cPT: physiotherapy.

Table 4. Secondary outcome of hip range of motion assessment: intention-to-treat analysis (N=66).

Time point and variable	Median (IQR ^a)		P value ^b	Estimate difference between groups (95% CI)
	Digital PT ^c group (n=35)	Control group (n=31)		
Baseline				
Lying flexion	28.2 (19.1)	37.1 (20.0)	.07	-8.9 (-18.53, 0.67)
Lying abduction	12.2 (5.4)	15.9 (9.1)	.05	-3.7 (-7.48, 0.02)
Standing flexion	45.1 (15.9)	49.6 (16.7)	.27	-4.5 (-12.52, 3.53)
Standing hyperextension	-11.9 (7.0)	-15.4 (8.8)	.31	3.4 (-0.44, 7.33)
Standing abduction	23.5 (6.8)	25.8 (10.7)	.08	-2.2 (-6.78, 2.26)
8 weeks				
Lying flexion	84.0 (23.5)	66.6 (19.6)	.002	17.5 (6.78, 28.18)
Lying abduction	50.5 (17.5)	39.2 (15.2)	.01	11.4 (3.27, 19.50)
Standing flexion	87.6 (21.2)	80.0 (19.8)	.14	7.5 (-2.58, 17.66)
Standing hyperextension	-36.7 (14.3)	-30.1 (8.2)	.03	-6.6 (-12.28, -0.96)
Standing abduction	52.2 (13.8)	40.3 (11.3)	<.001	11.9 (5.62, 18.13)
Change baseline-8 weeks				
Lying flexion	55.8 (27.4)	29.4 (25.6)	<.001	26.4 (13.32, 39.50)
Lying abduction	38.4 (17.3)	23.3 (15.7)	<.001	15.1 (6.91, 23.25)
Standing flexion	42.5 (21.3)	30.4 (20.3)	.02	12.0 (1.81, 22.33)
Standing hyperextension	-24.7 (12.7)	-14.7 (10.1)	.001	-10.1 (-15.75, -4.38)
Standing abduction	28.7 (13.4)	14.6 (13.5)	<.001	14.1 (7.51, 20.76)
6 months				
Lying flexion	80.7 (24.4)	70.0 (19.3)	.06	10.7 (-0.27, 21.6)
Lying abduction	49.8 (18.2)	41.6 (14.3)	.048	8.2 (0.06, 16.31)
Standing flexion	90.2 (23.1)	84.8 (19.8)	.32	5.4 (-5.25, 16.03)
Standing hyperextension	-34.1 (15.1)	-28.8 (9.2)	.10	-5.3 (-11.36, 0.81)
Standing abduction	51.7 (15.1)	43.8 (11.8)	.02	8.0 (1.24, 14.69)
Change baseline-6 months				
Lying flexion	52.5 (26.6)	32.8 (25.6)	.003	19.6 (6.73, 32.50)
Lying abduction	37.6 (18.2)	25.7 (15.2)	.01	11.9 (3.57, 20.20)
Standing flexion	45.1 (22.6)	35.2 (20.6)	.07	9.9 (-0.79, 20.57)
Standing hyperextension	-22.2 (13.3)	-13.5 (11.1)	.01	-8.7 (-14.72, -2.59)
Standing abduction	28.2 (14.3)	18.0 (12.1)	.003	10.2 (3.64, 16.74)

^aIQR: interquartile range.^bMann-Whitney *U* test.^cPT: physiotherapy.

Short-Term Outcomes Assessment

4-Week Assessment

Differences between groups were found for TUG between the digital PT and the conventional group: mean 9.9 (SD 5.4) seconds versus mean 15.0 (SD 8.2) seconds, respectively ($P<.001$), (see [Multimedia Appendix 4](#)) and for all hip ROM exercises, except standing flexion ($P=.05$; see [Multimedia Appendix 4](#)). There were no differences between groups in

terms of patient-reported outcomes (see [Multimedia Appendix 4](#)).

8-Week Assessment

The TUG scores were again lower in the digital PT group ($P<.001$; see [Table 2](#)). The median difference between the TUG scores in the two groups was 3.34 seconds (95% CI -5.14 to -1.70).

Regarding HOOS, the median scores in the digital PT group were superior to the conventional rehabilitation group for all subscales, except for pain and QoL (see [Table 3](#)). Importantly, in the symptoms and pain subscales, the median scores at the 8-week assessment were either the maximum score that can be attained (100) or close to that value in both groups, revealing a ceiling effect, which persisted over time (see [Table 3](#)).

Hip ROM was also higher in the digital PT group for all exercises, except for standing flexion (see [Table 3](#)).

Change Between Baseline and the 8-Week Assessment

The median difference between the changes in the two groups regarding the TUG score was 6.33 seconds (95% CI -8.79 to -3.42). The minimal detectable change was 2.49 seconds, which reveals a clinically significant difference (see [Table 2](#)).

No significant differences were detected in the median changes from baseline and week 8 for HOOS scores (see [Table 3](#)).

For hip ROM, significant improvements from baseline were noted in both groups, again with the digital PT group showing greater results (see [Table 4](#)).

In the per-protocol analysis, the change between baseline and week 8 was superior in the digital PT group for all outcome measures (see [Multimedia Appendix 5](#)).

Medium-Term Outcomes Assessment

3-Months Assessment

The TUG score remained significantly different between groups ($P < .001$), with patients from the SWORD group experiencing better results (see [Multimedia Appendix 4](#)).

For the HOOS, the median scores in the digital PT group were superior for all subscales except for pain ($P = .10$) and symptoms ($P = .08$; see [Multimedia Appendix 4](#)).

Hip ROM was also higher in the digital PT group for all measured exercises ($P < .001$), except for standing flexion ($P = .41$; see [Multimedia Appendix 4](#)).

6-Months Assessment

The median difference between the TUG scores in the two groups was 1.87 seconds (95% CI -3.02 to -0.62) in favor of the digital PT group ($P = .002$; see [Table 2](#)).

For HOOS, the median scores in the digital PT group were significantly superior to the conventional rehabilitation group for the ADL ($P = .02$), sports ($P = .01$), and QoL ($P = .02$) subscales (see [Table 3](#)). Importantly, the majority of patients from both groups reported the highest possible scores in the symptoms and pain subscales, and the ADL and QoL scores from the digital PT group nearly reached this same plateau (see [Table 3](#)).

Hip ROM was higher in the digital PT group for lying abduction ($P = .048$) and standing abduction ($P = .02$; see [Table 4](#)).

Change Between Baseline and the 6-Months Assessment

The ITT analysis revealed the superiority of the digital PT group in the TUG test, HOOS sports and QoL subscales, and all hip ROM exercises, except for standing flexion.

The median difference between the changes in the two groups for TUG was 4.79 seconds (95% CI -7.24 to -1.70) in favor of the digital PT group (see [Table 2](#)).

For HOOS, the difference between median score changes was both statistically and clinically significant in the sports (25.0 points, 95% CI 7.0-37.0) and the QoL (19.0 points, 95% CI 6.0-25.0) subscales (see [Table 3](#)).

For hip ROM, significant differences between the mean changes in the two groups were detected in all ROM exercises, except the standing flexion hip ROM ($P = .07$; see [Table 4](#)).

In the per-protocol analysis, the superiority of the digital PT group was verified for all outcome measures (see [Multimedia Appendix 5](#)).

Repeated Measures Analysis

A repeated measures ANOVA was performed only for variables with normal distribution—TUG (after log transformation) and hip ROM—and results are summarized in [Table 4](#). Although both groups presented an improvement in every dimension evaluated, this analysis revealed a main effect of time, a main effect of group (here with the exception of the standing hip flexion ROM), and an interaction between time and group for all outcome measures in favor of the digital PT group (see [Table 5](#) and [Figure 3](#)).

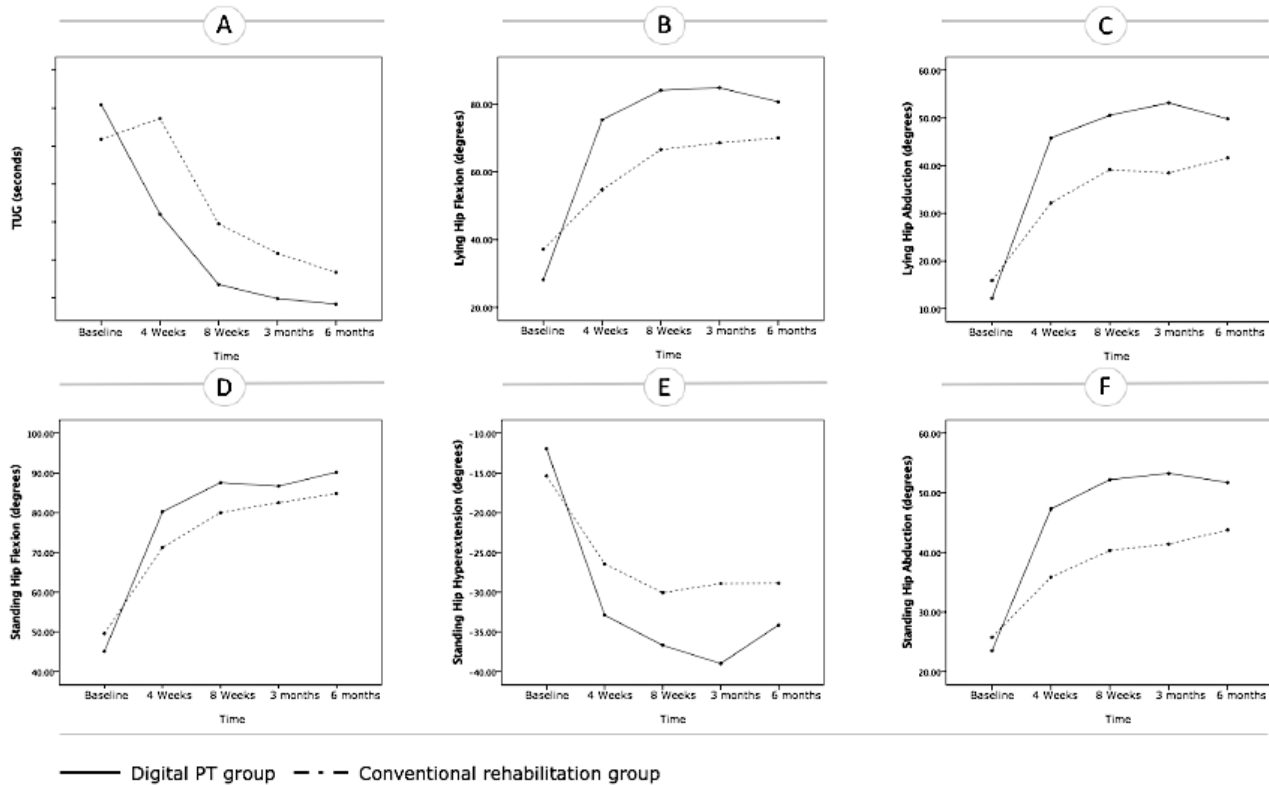
Table 5. Outcomes assessment: repeated measures analysis.

Outcome variable	Time		Group		Time*Group	
	<i>F</i> (df1,df2)	<i>P</i> value	<i>F</i> (df1,df2)	<i>P</i> value	<i>F</i> (df1,df2)	<i>P</i> value
Patient performance						
Timed Up and Go ^{a,b}	128.6 (2.5,159.6)	<.001	12.3 (1,64)	.01	14.9 (3.2,159.6)	<.001
Hip range of motion^b						
Lying hip flexion	119.4 (1.9,121.6)	<.001	6.5 (1,64)	.01	12.0 (1.9,121.6)	<.001
Lying hip abduction	139.0 (2.9,188.1)	<.001	9.4 (1,64)	.03	10.4 (2.9,121.6)	<.001
Standing hip flexion	154.9 (1.9,123.1)	<.001	1.06 (1,64)	.31	4.0 (1.9,123.1)	.02
Standing hip hyperextension	91.1 (3.3,211.2)	<.001	4.6 (1,64)	.04	8.2 (3.3,211.2)	<.001
Standing hip abduction	125.5 (2.1,137.3)	<.001	10.0 (1,64)	.002	12.1 (2.1,137.3)	<.001

^aIn transformation.

^bGreenhouse-Geisser correction.

Figure 3. Evolution of the outcomes over time in both groups based on the repeated measures analysis (estimated marginal means are presented). (A) Timed Up and Go (TUG) score, (B) lying hip flexion, (C) lying hip abduction, (D) standing hip flexion, (E) standing hip hyperextension, (F) standing hip abduction. PT: physiotherapy.



Discussion

Patient refusal and consent withdrawal were the main reasons for screening failures in this study (57.7%, 90/156). The explanation for this high refusal rate resides in patient skepticism on the patient side, especially in an older population with little technological literacy. This same difficulty was reported by other authors in studies with similar devices [44] and is one of the challenges that these technologies need to overcome. The oldest patients in this study were also afraid of hidden costs, even though it was clear and thoroughly explained that participation in the study did not imply any cost.

There were two dropouts in the digital PT group, and a high percentage of patients needed assistance from a caregiver to interact with the system (37%, 13/35) or required assistance calls. This likely represents the challenges felt by an older population when dealing with technology and some issues with the user interface that need to be overcome. In particular, each physical interaction (ie, the need to calibrate sensors and the multiple touches needed to start a session) represent huge hurdles for elderly patients. This has been another challenge faced by similar technologies and is an aspect where there is still much room for improvement.

The patient satisfaction score was very high, with all but two patients rating the system with a 10/10. This is particularly interesting considering the high percentage of patients who needed assistance in using the system. When they were asked to elaborate on the reasons, almost all referred to the possibility of performing sessions at home, at their convenience. Still, it must be considered that patients who agreed to enter the study were more prone to use new technologies, and thus more likely to give high scores.

Regarding clinical outcomes, considering the reference values for the TUG [43], HOOS [45], and hip ROM [46], both groups attained clinically relevant improvements in all outcome measures in the short- and medium-term assessments. This is in line with the findings of other authors who reported the effectiveness of early exercise interventions post-THA [8,10,47-49].

Greater benefits were observed in the digital PT group, which was particularly evident in the per-protocol analysis, for all outcome measures. Furthermore, for TUG and hip ROM, these were confirmed in the repeated measures analysis. This is a major achievement for remotely assisted PT programs, considering no evidence exists yet on the superiority of a specific exercise intervention post-THA [13,50-52]. Indeed, this approach could be a game-changer on how rehabilitation programs are delivered following hip replacement. By offering a scalable solution that does not rely entirely on human resources and maximizes the reach of existing resources, while minimizing patient discomfort and the need for traveling back and forth, access to effective rehabilitation could be democratized.

A synergy of factors might explain the results obtained in this study. These have already been discussed in a previous paper [34] and can be summarized as follows: (1) beneficial impact of biofeedback and gamification on patient engagement and performance, namely on achieving a higher ROM and on a more effective correction of movement errors; (2) greater patient empowerment, coupled with the effect of monitoring on patient effort; and (3) program changes based on objective data.

In the absence of studies using technologies similar to this one, it was nearly impossible to establish interstudy comparisons. In fact, we found five reports on biofeedback systems designed to complement physical therapists' intervention following hip arthroplasty [17,32,33,53,54], of which only two were based on inertial motion tracking [53,54]. However, the aims of these studies were distinct from ours and did not propose any rehabilitation program. Furthermore, reports on PT interventions for THA recipients revealed high methodological variability regarding timing, duration and intensity, outcome measures, and timelines for assessment [5,6,51,55]. Thus, only broad comparisons can be made between this study and previous ones.

Despite being one of the most often used and recommended performance-based outcome measures [13], the TUG test was only found in four studies [24,25,30,56]. From these, one compared the change between baseline and 9 to 12 months postsurgery [30], and the others presented data on 4- [56], 8- [24], 12- and 26-week [25] assessments or on the change between baseline and 9 to 12 months [30]. All studies but one [56] reported similar significant improvements on the TUG test

with time in both intervention groups. Overall, reported changes in TUG scores varied between 0.36 seconds [56] and -5.8 seconds [25]. The results in the conventional PT group from this study fall broadly within these values, whereas the results of the digital PT group were higher, even surpassing the scores previously reported for healthy, community-living older adults (mean 8 seconds) [57,58]. Additionally, although the pattern of recovery from the conventional group followed a similar trend to the ones found in other studies using conventional PT [59,60], patients from the digital PT group improved faster (38% at 4 weeks after surgery) and to a greater extent in the medium term (60% at 24 weeks). Indeed, in the study from Naylor et al [59], an Australian cohort of 44 THA recipients (mean age 65 years) with TUG baseline values similar to ours (18 seconds), patient recovery at 4 weeks was approximately 6% and plateaued at 36% 24 weeks after surgery. Additionally, Kennedy et al [60] reported a very slow recovery in a Canadian cohort of 68 patients (mean age 68 years), with a 78% TUG aggravation within the first 4 weeks following surgery (18 seconds) and a 21% improvement from baseline after 24 weeks. However, in this latter case, baseline values were oddly low (10.14 seconds), masking an actual 73% recovery after 24 weeks when the postoperative TUG (30 seconds) was set as the reference value.

Regarding HOOS, all subscales from both groups presented higher scores than those reported on a French (N=30; 37.5-55.3 points) [45] or Swedish HOOS validation study (N=90; 56.3-82.3 points) [42] 3 and 6 months after THA, respectively. In another randomized controlled trial (RCT; N=68) on the effect of a walking skill training program in THA patients, significant improvements were detected between 3 and 5 months. However, changes were much smaller than those we observed. Also, in terms of changes from baseline, both the digital PT and the control group improved significantly from baseline to 4 weeks postoperatively, which was sooner than what was reported by Mikkelsen et al (RCT; N=73) [8] and Heiberg et al (RCT; N=68) [61]. Importantly, a ceiling effect was observed on the HOOS symptoms and pain subscales, with patients from both intervention groups reporting the best possible score from 8 weeks onward. Ceiling effects have also been reported on all subscales in the Swedish HOOS validation study, 6 months after THR [42], and in the Dutch RCT by Mikkelsen et al [8]. Considering some sensitivity is lost using this scale, a revision and adaptation to the context of digital interventions, such as the one we presented, would be very useful in the future.

Regarding hip ROM, all reports use goniometry as a means to measure hip ROM, whereas we applied high-precision sensor-based technology to assess active hip ROM, enabling continuous remote monitoring [34,62], while eliminating operator errors [63]. In a retrospective study by Davis et al (N=1383) [64], a logistic regression model yielded three levels of postsurgery hip ROM: high (115° of flexion, 25° of abduction), average (90°-114° of flexion, 16°-24° of abduction), or low (<90° of flexion, ≤15° of abduction) motion. Considering these ranges, scores from our study revealed very high abduction amplitudes in both groups at month 6 postsurgery, particularly in the digital PT group. Indeed, we found no other reports

showing superior abduction results than those reported in this study [31,56,61,65,66].

On the other hand, flexion ROM values fell in the lower range reported, revealing some room for improvement. Notwithstanding, our results from the digital PT group at month 6 (median 80.7°, IQR 24.4) were comparable to the ones reported on another prospective study (N=15) [66] on THA outcomes 12 months postsurgery (flexion mean 93.3°, SD 18.7°).

Another study by Umpierres et al (RCT, N=106) [65] also reported on the improvement of hip flexion and extension ROM following THR, with an early 2-week inpatient supervised versus unsupervised intervention. Although closer to the values reported at the 4-week assessment in this study, results from the digital PT group in our study were superior to the ones reported in this RCT. Other studies were found in which flexion and extension ROMs were higher than those we reported [31,56,61]. However, even considering possible differences related to measurement methods, high baseline angles revealed that the population in these studies was not as disabled as the one in this study.

Although the improvements achieved in hip ROM are substantial, the values are still far from those reported for healthy individuals [67].

This study has several limitations that need to be acknowledged. This was a quasi-randomized study, in which patient allocation was performed according to geographical location. This implies that even if no differences were found in demographics, comorbidities, and risk factors for adverse and clinical characteristics (except for the HOOS QoL subscale), a number of factors (eg, socioeconomic) might have influenced the results. Still, almost all the patients resided in urban areas; therefore, the authors speculate that the impact of these aspects is small, but nonetheless needs to be controlled in ensuing studies.

There was a potential selection bias toward more technologically prone recipients, given the low inclusion rate. To address this, greater involvement of the clinical teams (doctors and nursing

staff) in the wards is required to overcome natural patient skepticism.

The limited context of the clinical setting, which was a low-volume orthopedic hospital, may not reflect the reality of other settings. Thus, generalization of the results needs to be confirmed in larger hospitals and multicentric trials.

The study protocol depicts slight differences between the digital PT group and conventional rehabilitation group that could be confounders. First, the total active treatment time was similar between groups. However, the intensity in the digital PT group was highly variable, and unsupervised sessions in the conventional group were not taken into consideration. These aspects also need to be homogenized and controlled in future studies. Second, the exercise program was similar in both groups, with the exception of additional exercises that were possible only with a face-to-face intervention. In this sense, although the authors agree that these may be confounding factors, they benefit the conventional group and not the digital intervention group and therefore do not bias results toward the latter.

There was a notable absence of minor adverse events, in particular after 8 weeks, most likely due to underreporting. In future studies, in addition to direct telephone contacts at predetermined time stamps and specific questioning of adverse events in assessment appointments, event logs should be delivered to the patients for them to fill in.

In conclusion, this study demonstrates that home-based rehabilitation with this novel digital biofeedback system is feasible and safe following THA as previously demonstrated for TKA, and is associated with high patient satisfaction, albeit with room for improvement in terms of usability by elderly patients. Plus, to our knowledge, it is the first study demonstrating that a digital rehabilitation solution can reduce the dependence on human resources while ensuring better clinical outcomes than conventional rehabilitation in the short and medium term following THA. These promising results justify further investigation and prove the feasibility of larger RCTs to confirm these findings.

Acknowledgments

This work was supported by the European Commission through the Project H2020 SME Instrument Phase 2-Grant Agreement number 672814. The study sponsor, SWORD Health, was involved in study design, data collection, and interpretation and writing of the manuscript. All patients included in this study were referred to post-THA rehabilitation by JP and RS, who also served as independent controllers of the study. The decision to submit the manuscript for publication was made by these two independent authors.

Authors' Contributions

Study concept and design: FDC, AN, VB, JP, RS, and LT. Data acquisition: IM, JG, MM, and IB. Direct supervision of rehabilitation program: IM, JG, MM, and IB. Independent supervision of rehabilitation program: JP and RS. Outcomes assessment: JP. Analysis and interpretation of data: FDC, LT, AN, and MM. Critical revision of the manuscript for important intellectual content: all authors. Obtained funding: FDC and VB. Administrative, technical, and material support: IM, JG, MM, and IB. Study supervision: FDC, VB, JP, RS, and AN.

Conflicts of Interest

FDC and VB have a shareholder position at SWORD Health, a company that develops and commercializes SWORD-related products. AN, IM, JG, MM, and IB are employees of SWORD Health but do not have shareholder positions. LT and JL receive honoraria from SWORD Health. JP and RS have no conflicts of interest to report.

Multimedia Appendix 1

Rehabilitation protocol.

[\[DOCX File, 17KB-Multimedia Appendix 1\]](#)

Multimedia Appendix 2

Raw data.

[\[XLSX File \(Microsoft Excel File\), 260KB-Multimedia Appendix 2\]](#)

Multimedia Appendix 3

CONSORT EHEALTH checklist (V 1.6.1).

[\[PDF File \(Adobe PDF File\), 2MB-Multimedia Appendix 3\]](#)

Multimedia Appendix 4

Intent-to-treat analysis.

[\[DOCX File, 43KB-Multimedia Appendix 4\]](#)

Multimedia Appendix 5

Per protocol analysis.

[\[DOCX File, 186KB-Multimedia Appendix 5\]](#)

References

1. Singh JA. Epidemiology of knee and hip arthroplasty: a systematic review. *Open Orthop J* 2011 Mar 16;5:80-85 [[FREE Full text](#)] [doi: [10.2174/1874325001105010080](https://doi.org/10.2174/1874325001105010080)] [Medline: [21584277](https://pubmed.ncbi.nlm.nih.gov/21584277/)]
2. Kurtz S, Ong K, Lau E, Mowat F, Halpern M. Projections of primary and revision hip and knee arthroplasty in the United States from 2005 to 2030. *J Bone Joint Surg Am* 2007 Apr;89(4):780-785. [doi: [10.2106/JBJS.F.00222](https://doi.org/10.2106/JBJS.F.00222)] [Medline: [17403800](https://pubmed.ncbi.nlm.nih.gov/17403800/)]
3. Ethgen O, Bruyère O, Richy F, Dardennes C, Reginster J. Health-related quality of life in total hip and total knee arthroplasty. A qualitative and systematic review of the literature. *J Bone Joint Surg Am* 2004 May;86(5):963-974. [doi: [10.2106/00004623-200405000-00012](https://doi.org/10.2106/00004623-200405000-00012)] [Medline: [15118039](https://pubmed.ncbi.nlm.nih.gov/15118039/)]
4. Kennedy DM, Hanna SE, Stratford PW, Wessel J, Gollish JD. Preoperative function and gender predict pattern of functional recovery after hip and knee arthroplasty. *J Arthroplasty* 2006 Jun;21(4):559-566. [doi: [10.1016/j.arth.2005.07.010](https://doi.org/10.1016/j.arth.2005.07.010)] [Medline: [16781410](https://pubmed.ncbi.nlm.nih.gov/16781410/)]
5. Vissers MM, Bussmann JB, Verhaar JA, Arends LR, Furlan AD, Reijman M. Recovery of physical functioning after total hip arthroplasty: systematic review and meta-analysis of the literature. *Phys Ther* 2011 May;91(5):615-629. [doi: [10.2522/ptj.20100201](https://doi.org/10.2522/ptj.20100201)] [Medline: [21393418](https://pubmed.ncbi.nlm.nih.gov/21393418/)]
6. Coulter CL, Scarvell JM, Neeman TM, Smith PN. Physiotherapist-directed rehabilitation exercises in the outpatient or home setting improve strength, gait speed and cadence after elective total hip replacement: a systematic review. *J Physiother* 2013 Dec;59(4):219-226 [[FREE Full text](#)] [doi: [10.1016/S1836-9553\(13\)70198-X](https://doi.org/10.1016/S1836-9553(13)70198-X)] [Medline: [24287215](https://pubmed.ncbi.nlm.nih.gov/24287215/)]
7. Okoro T, Lemmey AB, Maddison P, Andrew JG. An appraisal of rehabilitation regimes used for improving functional outcome after total hip replacement surgery. *Sports Med Arthrosc Rehabil Ther Technol* 2012 Feb 07;4(1):5 [[FREE Full text](#)] [doi: [10.1186/1758-2555-4-5](https://doi.org/10.1186/1758-2555-4-5)] [Medline: [22313723](https://pubmed.ncbi.nlm.nih.gov/22313723/)]
8. Mikkelsen LR, Mechlenburg I, Søballe K, Jørgensen LB, Mikkelsen S, Bandholm T, et al. Effect of early supervised progressive resistance training compared to unsupervised home-based exercise after fast-track total hip replacement applied to patients with preoperative functional limitations. A single-blinded randomised controlled trial. *Osteoarthritis Cartilage* 2014 Dec;22(12):2051-2058 [[FREE Full text](#)] [doi: [10.1016/j.joca.2014.09.025](https://doi.org/10.1016/j.joca.2014.09.025)] [Medline: [25305374](https://pubmed.ncbi.nlm.nih.gov/25305374/)]
9. Trudelle-Jackson E, Smith SS. Effects of a late-phase exercise program after total hip arthroplasty: a randomized controlled trial. *Arch Phys Med Rehabil* 2004 Jul;85(7):1056-1062. [Medline: [15241750](https://pubmed.ncbi.nlm.nih.gov/15241750/)]
10. Mikkelsen LR, Mikkelsen SS, Christensen FB. Early, intensified home-based exercise after total hip replacement-a pilot study. *Physiother Res Int* 2012 Dec;17(4):214-226. [doi: [10.1002/pri.1523](https://doi.org/10.1002/pri.1523)] [Medline: [22451440](https://pubmed.ncbi.nlm.nih.gov/22451440/)]

11. Haas R, Sarkies M, Bowles K, O'Brien L, Haines T. Early commencement of physical therapy in the acute phase following elective lower limb arthroplasty produces favorable outcomes: a systematic review and meta-analysis examining allied health service models. *Osteoarthritis Cartilage* 2016 Dec;24(10):1667-1681 [FREE Full text] [doi: [10.1016/j.joca.2016.05.005](https://doi.org/10.1016/j.joca.2016.05.005)] [Medline: [27224276](https://pubmed.ncbi.nlm.nih.gov/27224276/)]
12. Chiung-Jui Su D, Yuan K, Weng S, Hong R, Wu M, Wu H, et al. Can early rehabilitation after total hip arthroplasty reduce its major complications and medical expenses? Report from a nationally representative cohort. *Biomed Res Int* 2015;2015:641958 [FREE Full text] [doi: [10.1155/2015/641958](https://doi.org/10.1155/2015/641958)] [Medline: [26146625](https://pubmed.ncbi.nlm.nih.gov/26146625/)]
13. Westby MD, Brittain A, Backman CL. Expert consensus on best practices for post-acute rehabilitation after total hip and knee arthroplasty: a Canada and United States Delphi study. *Arthritis Care Res (Hoboken)* 2014 Mar;66(3):411-423 [FREE Full text] [doi: [10.1002/acr.22164](https://doi.org/10.1002/acr.22164)] [Medline: [24023047](https://pubmed.ncbi.nlm.nih.gov/24023047/)]
14. Bashshur R, Shannon G, Krupinski E, Grigsby J. The taxonomy of telemedicine. *Telemed J E Health* 2011;17(6):484-494. [doi: [10.1089/tmj.2011.0103](https://doi.org/10.1089/tmj.2011.0103)] [Medline: [21718114](https://pubmed.ncbi.nlm.nih.gov/21718114/)]
15. Dinesen B, Nonnecke B, Lindeman D, Toft E, Kidholm K, Jethwani K, et al. Personalized telehealth in the future: a global research agenda. *J Med Internet Res* 2016 Mar 01;18(3):e53 [FREE Full text] [doi: [10.2196/jmir.5257](https://doi.org/10.2196/jmir.5257)] [Medline: [26932229](https://pubmed.ncbi.nlm.nih.gov/26932229/)]
16. Dahlberg LE, Grahn D, Dahlberg JE, Thorstensson CA. A web-based platform for patients with osteoarthritis of the hip and knee: a pilot study. *JMIR Res Protoc* 2016 Jun 03;5(2):e115 [FREE Full text] [doi: [10.2196/resprot.5665](https://doi.org/10.2196/resprot.5665)] [Medline: [27261271](https://pubmed.ncbi.nlm.nih.gov/27261271/)]
17. Antón D, Nelson M, Russell T, Goñi A, Illarramendi A. Validation of a Kinect-based telerehabilitation system with total hip replacement patients. *J Telemed Telecare* 2016 Apr;22(3):192-197. [doi: [10.1177/1357633X15590019](https://doi.org/10.1177/1357633X15590019)] [Medline: [26130735](https://pubmed.ncbi.nlm.nih.gov/26130735/)]
18. Tousignant M, Boissy P, Corriveau H, Moffet H. In home telerehabilitation for older adults after discharge from an acute hospital or rehabilitation unit: A proof-of-concept study and costs estimation. *Disabil Rehabil Assist Technol* 2006 Sep;1(4):209-216. [Medline: [19260168](https://pubmed.ncbi.nlm.nih.gov/19260168/)]
19. McCue M, Fairman A, Pramuka M. Enhancing quality of life through telerehabilitation. *Phys Med Rehabil Clin N Am* 2010 Feb;21(1):195-205. [doi: [10.1016/j.pmr.2009.07.005](https://doi.org/10.1016/j.pmr.2009.07.005)] [Medline: [19951786](https://pubmed.ncbi.nlm.nih.gov/19951786/)]
20. Granja C, Janssen W, Johansen MA. Factors determining the success and failure of eHealth interventions: systematic review of the literature. *J Med Internet Res* 2018 Dec 01;20(5):e10235 [FREE Full text] [doi: [10.2196/10235](https://doi.org/10.2196/10235)] [Medline: [29716883](https://pubmed.ncbi.nlm.nih.gov/29716883/)]
21. Mahomed NN, Davis AM, Hawker G, Badley E, Davey JR, Syed KA, et al. Inpatient compared with home-based rehabilitation following primary unilateral total hip or knee replacement: a randomized controlled trial. *J Bone Joint Surg Am* 2008 Aug;90(8):1673-1680. [doi: [10.2106/JBJS.G.01108](https://doi.org/10.2106/JBJS.G.01108)] [Medline: [18676897](https://pubmed.ncbi.nlm.nih.gov/18676897/)]
22. Cottrell MA, Galea OA, O'Leary SP, Hill AJ, Russell TG. Real-time telerehabilitation for the treatment of musculoskeletal conditions is effective and comparable to standard practice: a systematic review and meta-analysis. *Clin Rehabil* 2017 May;31(5):625-638. [doi: [10.1177/0269215516645148](https://doi.org/10.1177/0269215516645148)] [Medline: [27141087](https://pubmed.ncbi.nlm.nih.gov/27141087/)]
23. Pastora-Bernal JM, Martín-Valero R, Barón-López FJ, Estebanez-Pérez MJ. Evidence of benefit of telerehabilitation after orthopedic surgery: a systematic review. *J Med Internet Res* 2017 Dec 28;19(4):e142 [FREE Full text] [doi: [10.2196/jmir.6836](https://doi.org/10.2196/jmir.6836)] [Medline: [28455277](https://pubmed.ncbi.nlm.nih.gov/28455277/)]
24. Galea MP, Levinger P, Lythgo N, Cimoli C, Weller R, Tully E, et al. A targeted home- and center-based exercise program for people after total hip replacement: a randomized clinical trial. *Arch Phys Med Rehabil* 2008 Aug;89(8):1442-1447. [doi: [10.1016/j.apmr.2007.11.058](https://doi.org/10.1016/j.apmr.2007.11.058)] [Medline: [18586222](https://pubmed.ncbi.nlm.nih.gov/18586222/)]
25. Coulter C, Perriman DM, Neeman TM, Smith PN, Scarvell JM. Supervised or unsupervised rehabilitation after total hip replacement provides similar improvements for patients: a randomized controlled trial. *Arch Phys Med Rehabil* 2017 Dec;98(11):2253-2264. [doi: [10.1016/j.apmr.2017.03.032](https://doi.org/10.1016/j.apmr.2017.03.032)] [Medline: [28506775](https://pubmed.ncbi.nlm.nih.gov/28506775/)]
26. Unlu E, Eksioğlu E, Aydog E, Aydog ST, Atay G. The effect of exercise on hip muscle strength, gait speed and cadence in patients with total hip arthroplasty: a randomized controlled study. *Clin Rehabil* 2007 Aug;21(8):706-711. [doi: [10.1177/0269215507077302](https://doi.org/10.1177/0269215507077302)] [Medline: [17846070](https://pubmed.ncbi.nlm.nih.gov/17846070/)]
27. Jan M, Hung J, Lin JC, Wang S, Liu T, Tang P. Effects of a home program on strength, walking speed, and function after total hip replacement. *Arch Phys Med Rehabil* 2004 Dec;85(12):1943-1951. [Medline: [15605331](https://pubmed.ncbi.nlm.nih.gov/15605331/)]
28. Picha KJ, Howell DM. A model to increase rehabilitation adherence to home exercise programmes in patients with varying levels of self-efficacy. *Musculoskeletal Care* 2018 Dec;16(1):233-237. [doi: [10.1002/msc.1194](https://doi.org/10.1002/msc.1194)] [Medline: [28401666](https://pubmed.ncbi.nlm.nih.gov/28401666/)]
29. Pisters MF, Veenhof C, Schellevis FG, Twisk JW, Dekker J, De Bakker DH. Exercise adherence improving long-term patient outcome in patients with osteoarthritis of the hip and/or knee. *Arthritis Care Res (Hoboken)* 2010 Aug;62(8):1087-1094 [FREE Full text] [doi: [10.1002/acr.20182](https://doi.org/10.1002/acr.20182)] [Medline: [20235201](https://pubmed.ncbi.nlm.nih.gov/20235201/)]
30. Okoro T, Whitaker R, Gardner A, Maddison P, Andrew JG, Lemmey A. Does an early home-based progressive resistance training program improve function following total hip replacement? Results of a randomized controlled study. *BMC Musculoskelet Disord* 2016 Apr 21;17:173 [FREE Full text] [doi: [10.1186/s12891-016-1023-x](https://doi.org/10.1186/s12891-016-1023-x)] [Medline: [27097833](https://pubmed.ncbi.nlm.nih.gov/27097833/)]
31. Sashika H, Matsuba Y, Watanabe Y. Home program of physical therapy: effect on disabilities of patients with total hip arthroplasty. *Arch Phys Med Rehabil* 1996 Mar;77(3):273-277. [Medline: [8600871](https://pubmed.ncbi.nlm.nih.gov/8600871/)]

32. Pataky Z, De León Rodríguez D, Golay A, Assal M, Assal J, Hauert C. Biofeedback training for partial weight bearing in patients after total hip arthroplasty. *Arch Phys Med Rehabil* 2009 Aug;90(8):1435-1438. [doi: [10.1016/j.apmr.2009.02.011](https://doi.org/10.1016/j.apmr.2009.02.011)] [Medline: [19651281](https://pubmed.ncbi.nlm.nih.gov/19651281/)]
33. Raaben M, Vogely HC, Blokhuis TJ. Real-time visual biofeedback to improve therapy compliance after total hip arthroplasty: a pilot randomized controlled trial. *Gait Posture* 2018 Mar;61:306-310. [doi: [10.1016/j.gaitpost.2018.01.038](https://doi.org/10.1016/j.gaitpost.2018.01.038)] [Medline: [29413802](https://pubmed.ncbi.nlm.nih.gov/29413802/)]
34. Correia FD, Nogueira A, Magalhães I, Guimarães J, Moreira M, Barradas I, et al. Home-based rehabilitation with a novel digital biofeedback system versus conventional in-person rehabilitation after total knee replacement: a feasibility study. *Sci Rep* 2018 Jul 26;8(1):11299 [FREE Full text] [doi: [10.1038/s41598-018-29668-0](https://doi.org/10.1038/s41598-018-29668-0)] [Medline: [30050087](https://pubmed.ncbi.nlm.nih.gov/30050087/)]
35. Ribinik P, Le Moine F, de Korvin G, Coudeyre E, Genty M, Rannou F, et al. Physical and rehabilitation medicine (PRM) care pathways: "patients after total knee arthroplasty". *Ann Phys Rehabil Med* 2012 Nov;55(8):533-539 [FREE Full text] [doi: [10.1016/j.rehab.2012.02.001](https://doi.org/10.1016/j.rehab.2012.02.001)] [Medline: [22455993](https://pubmed.ncbi.nlm.nih.gov/22455993/)]
36. Podsiadlo D, Richardson S. The timed "Up & Go": a test of basic functional mobility for frail elderly persons. *J Am Geriatr Soc* 1991 Feb;39(2):142-148. [Medline: [1991946](https://pubmed.ncbi.nlm.nih.gov/1991946/)]
37. Poitras S, Wood KS, Savard J, Dervin GF, Beaulé PE. Predicting early clinical function after hip or knee arthroplasty. *Bone Joint Res* 2015 Sep;4(9):145-151 [FREE Full text] [doi: [10.1302/2046-3758.49.2000417](https://doi.org/10.1302/2046-3758.49.2000417)] [Medline: [26336897](https://pubmed.ncbi.nlm.nih.gov/26336897/)]
38. Nankaku M, Tsuboyama T, Akiyama H, Kakinoki R, Fujita Y, Nishimura J, et al. Preoperative prediction of ambulatory status at 6 months after total hip arthroplasty. *Phys Ther* 2013 Jan;93(1):88-93. [doi: [10.2522/ptj.20120016](https://doi.org/10.2522/ptj.20120016)] [Medline: [23001525](https://pubmed.ncbi.nlm.nih.gov/23001525/)]
39. Doll H, Gentile B, Bush EN, Ballinger R. Evaluation of the measurement properties of four performance outcome measures in patients with elective hip replacements, elective knee replacements, or hip fractures. *Value Health* 2018 Dec;21(9):1104-1114 [FREE Full text] [doi: [10.1016/j.jval.2018.02.006](https://doi.org/10.1016/j.jval.2018.02.006)] [Medline: [30224116](https://pubmed.ncbi.nlm.nih.gov/30224116/)]
40. Stratford PW, Kennedy DM, Riddle DL. New study design evaluated the validity of measures to assess change after hip or knee arthroplasty. *J Clin Epidemiol* 2009 Mar;62(3):347-352. [doi: [10.1016/j.jclinepi.2008.06.008](https://doi.org/10.1016/j.jclinepi.2008.06.008)] [Medline: [18834709](https://pubmed.ncbi.nlm.nih.gov/18834709/)]
41. Klässbo M, Larsson E, Mannevik E. Hip disability and osteoarthritis outcome score. An extension of the Western Ontario and McMaster Universities Osteoarthritis Index. *Scand J Rheumatol* 2003;32(1):46-51. [Medline: [12635946](https://pubmed.ncbi.nlm.nih.gov/12635946/)]
42. Nilsson AK, Lohmander LS, Klässbo M, Roos EM. Hip disability and osteoarthritis outcome score (HOOS)--validity and responsiveness in total hip replacement. *BMC Musculoskelet Disord* 2003 May 30;4:10 [FREE Full text] [doi: [10.1186/1471-2474-4-10](https://doi.org/10.1186/1471-2474-4-10)] [Medline: [12777182](https://pubmed.ncbi.nlm.nih.gov/12777182/)]
43. Kennedy DM, Stratford PW, Wessel J, Gollish JD, Penney D. Assessing stability and change of four performance measures: a longitudinal study evaluating outcome following total hip and knee arthroplasty. *BMC Musculoskelet Disord* 2005 Jan 28;6:3 [FREE Full text] [doi: [10.1186/1471-2474-6-3](https://doi.org/10.1186/1471-2474-6-3)] [Medline: [15679884](https://pubmed.ncbi.nlm.nih.gov/15679884/)]
44. Piqueras M, Marco E, Coll M, Escalada F, Ballester A, Cinca C, et al. Effectiveness of an interactive virtual telerehabilitation system in patients after total knee arthroplasty: a randomized controlled trial. *J Rehabil Med* 2013 Apr;45(4):392-396 [FREE Full text] [doi: [10.2340/16501977-1119](https://doi.org/10.2340/16501977-1119)] [Medline: [23474735](https://pubmed.ncbi.nlm.nih.gov/23474735/)]
45. Ornetti P, Parratte S, Gossec L, Tavernier C, Argenson J, Roos EM, et al. Cross-cultural adaptation and validation of the French version of the Hip disability and Osteoarthritis Outcome Score (HOOS) in hip osteoarthritis patients. *Osteoarthritis Cartilage* 2010 Apr;18(4):522-529 [FREE Full text] [doi: [10.1016/j.joca.2009.12.007](https://doi.org/10.1016/j.joca.2009.12.007)] [Medline: [20060086](https://pubmed.ncbi.nlm.nih.gov/20060086/)]
46. Foucher KC. Identifying clinically meaningful benchmarks for gait improvement after total hip arthroplasty. *J Orthop Res* 2016 Jan;34(1):88-96 [FREE Full text] [doi: [10.1002/jor.22996](https://doi.org/10.1002/jor.22996)] [Medline: [26218738](https://pubmed.ncbi.nlm.nih.gov/26218738/)]
47. Hesse S, Werner C, Seibel H, von FS, Kappel E, Kirker S, et al. Treadmill training with partial body-weight support after total hip arthroplasty: a randomized controlled trial. *Arch Phys Med Rehabil* 2003 Dec;84(12):1767-1773. [Medline: [14669181](https://pubmed.ncbi.nlm.nih.gov/14669181/)]
48. Suetta C, Magnusson SP, Rosted A, Aagaard P, Jakobsen AK, Larsen LH, et al. Resistance training in the early postoperative phase reduces hospitalization and leads to muscle hypertrophy in elderly hip surgery patients--a controlled, randomized study. *J Am Geriatr Soc* 2004 Dec;52(12):2016-2022. [doi: [10.1111/j.1532-5415.2004.52557.x](https://doi.org/10.1111/j.1532-5415.2004.52557.x)] [Medline: [15571536](https://pubmed.ncbi.nlm.nih.gov/15571536/)]
49. Rahmann AE, Brauer SG, Nitz JC. A specific inpatient aquatic physiotherapy program improves strength after total hip or knee replacement surgery: a randomized controlled trial. *Arch Phys Med Rehabil* 2009 May;90(5):745-755. [doi: [10.1016/j.apmr.2008.12.011](https://doi.org/10.1016/j.apmr.2008.12.011)] [Medline: [19406293](https://pubmed.ncbi.nlm.nih.gov/19406293/)]
50. Di Monaco M, Vallero F, Tappero R, Cavanna A. Rehabilitation after total hip arthroplasty: a systematic review of controlled trials on physical exercise programs. *Eur J Phys Rehabil Med* 2009 Sep;45(3):303-317 [FREE Full text] [Medline: [19238130](https://pubmed.ncbi.nlm.nih.gov/19238130/)]
51. Wijnen A, Bouma SE, Seeber GH, van der Woude LH, Bulstra SK, Lazovic D, et al. The therapeutic validity and effectiveness of physiotherapeutic exercise following total hip arthroplasty for osteoarthritis: A systematic review. *PLoS One* 2018;13(3):e0194517 [FREE Full text] [doi: [10.1371/journal.pone.0194517](https://doi.org/10.1371/journal.pone.0194517)] [Medline: [29547670](https://pubmed.ncbi.nlm.nih.gov/29547670/)]
52. Artz N, Elvers KT, Lowe CM, Sackley C, Jepson P, Beswick AD. Effectiveness of physiotherapy exercise following total knee replacement: systematic review and meta-analysis. *BMC Musculoskelet Disord* 2015 Feb 07;16:15 [FREE Full text] [doi: [10.1186/s12891-015-0469-6](https://doi.org/10.1186/s12891-015-0469-6)] [Medline: [25886975](https://pubmed.ncbi.nlm.nih.gov/25886975/)]

53. Jeldi AJ, Grant M, Allen DJ, Deakin AH, McDonald DA, Stansfield BW. Upright time and sit-to-stand transition progression after total hip arthroplasty: an in-hospital longitudinal study. *J Arthroplasty* 2016 Mar;31(3):735-739. [doi: [10.1016/j.arth.2015.09.024](https://doi.org/10.1016/j.arth.2015.09.024)] [Medline: [26603439](https://pubmed.ncbi.nlm.nih.gov/26603439/)]
54. Lin JF, Kuli D. Human pose recovery using wireless inertial measurement units. *Physiol Meas* 2012 Dec;33(12):2099-2115. [doi: [10.1088/0967-3334/33/12/2099](https://doi.org/10.1088/0967-3334/33/12/2099)] [Medline: [23174667](https://pubmed.ncbi.nlm.nih.gov/23174667/)]
55. Lowe CJ, Davies L, Sackley CM, Barker KL. Effectiveness of land-based physiotherapy exercise following hospital discharge following hip arthroplasty for osteoarthritis: an updated systematic review. *Physiotherapy* 2015 Sep;101(3):252-265. [doi: [10.1016/j.physio.2014.12.003](https://doi.org/10.1016/j.physio.2014.12.003)] [Medline: [25724323](https://pubmed.ncbi.nlm.nih.gov/25724323/)]
56. Nankaku M, Ikeguchi R, Goto K, So K, Kuroda Y, Matsuda S. Hip external rotator exercise contributes to improving physical functions in the early stage after total hip arthroplasty using an anterolateral approach: a randomized controlled trial. *Disabil Rehabil* 2016 Dec;38(22):2178-2183. [doi: [10.3109/09638288.2015.1129453](https://doi.org/10.3109/09638288.2015.1129453)] [Medline: [26750398](https://pubmed.ncbi.nlm.nih.gov/26750398/)]
57. Steffen TM, Hacker TA, Mollinger L. Age- and gender-related test performance in community-dwelling elderly people: Six-Minute Walk Test, Berg Balance Scale, Timed Up & Go Test, and gait speeds. *Phys Ther* 2002 Feb;82(2):128-137. [Medline: [11856064](https://pubmed.ncbi.nlm.nih.gov/11856064/)]
58. Lusardi M, Pellecchia G, Schulman M. Functional performance in community living older adults. *J Geriatr Phys Ther* 2003 Dec 01;26(3):e1.
59. Naylor JM, Harmer AR, Heard RC, Harris IA. Patterns of recovery following knee and hip replacement in an Australian cohort. *Aust Health Review* 2009;33(1):124. [doi: [10.1071/AH090124](https://doi.org/10.1071/AH090124)]
60. Kennedy DM, Stratford PW, Hanna SE, Wessel J, Gollish JD. Modeling early recovery of physical function following hip and knee arthroplasty. *BMC Musculoskelet Disord* 2006 Dec 11;7:100 [FREE Full text] [doi: [10.1186/1471-2474-7-100](https://doi.org/10.1186/1471-2474-7-100)] [Medline: [17156487](https://pubmed.ncbi.nlm.nih.gov/17156487/)]
61. Heiberg KE, Bruun-Olsen V, Ekeland A, Mengshoel AM. Effect of a walking skill training program in patients who have undergone total hip arthroplasty: Followup one year after surgery. *Arthritis Care Res (Hoboken)* 2012 Mar;64(3):415-423 [FREE Full text] [doi: [10.1002/acr.20681](https://doi.org/10.1002/acr.20681)] [Medline: [22170790](https://pubmed.ncbi.nlm.nih.gov/22170790/)]
62. Bahadori S, Immins T, Wainwright TW. A review of wearable motion tracking systems used in rehabilitation following hip and knee replacement. *J Rehabil Assist Techn Eng* 2018 Jun 18;5. [doi: [10.1177/2055668318771816](https://doi.org/10.1177/2055668318771816)]
63. Charbonnier C, Chagué S, Schmid J, Kolo FC, Bernardoni M, Christofilopoulos P. Analysis of hip range of motion in everyday life: a pilot study. *Hip Int* 2015;25(1):82-90. [doi: [10.5301/hipint.5000192](https://doi.org/10.5301/hipint.5000192)] [Medline: [25385049](https://pubmed.ncbi.nlm.nih.gov/25385049/)]
64. Davis KE, Ritter MA, Berend ME, Meding JB. The importance of range of motion after total hip arthroplasty. *Clin Orthop Relat Res* 2007 Dec;465:180-184. [doi: [10.1097/BLO.0b013e31815c5a64](https://doi.org/10.1097/BLO.0b013e31815c5a64)] [Medline: [18090472](https://pubmed.ncbi.nlm.nih.gov/18090472/)]
65. Umpierrez CS, Ribeiro TA, Marchisio Â, Galvão L, Borges Í, Macedo CADS, et al. Rehabilitation following total hip arthroplasty evaluation over short follow-up time: randomized clinical trial. *J Rehabil Res Dev* 2014;51(10):1567-1578 [FREE Full text] [doi: [10.1682/JRRD.2014.05.0132](https://doi.org/10.1682/JRRD.2014.05.0132)] [Medline: [25856757](https://pubmed.ncbi.nlm.nih.gov/25856757/)]
66. Trudelle-Jackson E, Emerson R, Smith S. Outcomes of total hip arthroplasty: a study of patients one year postsurgery. *J Orthop Sports Phys Ther* 2002 Jun;32(6):260-267. [doi: [10.2519/jospt.2002.32.6.260](https://doi.org/10.2519/jospt.2002.32.6.260)] [Medline: [12061707](https://pubmed.ncbi.nlm.nih.gov/12061707/)]
67. Tannast M, Kubiak-Langer M, Langlotz F, Puls M, Murphy SB, Siebenrock KA. Noninvasive three-dimensional assessment of femoroacetabular impingement. *J Orthop Res* 2007 Jan;25(1):122-131 [FREE Full text] [doi: [10.1002/jor.20309](https://doi.org/10.1002/jor.20309)] [Medline: [17054112](https://pubmed.ncbi.nlm.nih.gov/17054112/)]

Abbreviations

- ADL:** activities of daily living
- CONSORT:** Consolidated Standards of Reporting Trials
- HOOS:** Hip dysfunction and Osteoarthritis Outcome Scale
- IQR:** interquartile range
- ITT:** intention-to-treat
- PT:** physiotherapy
- QoL:** quality of life
- RCT:** randomized controlled trial
- ROM:** range of motion
- THA:** total hip arthroplasty
- TKA:** total knee arthroplasty
- TUG:** Timed Up and Go

Edited by G Eysenbach; submitted 29.04.19; peer-reviewed by RR Pai, P Boissy; comments to author 26.05.19; revised version received 31.05.19; accepted 31.05.19; published 21.06.19

Please cite as:

Dias Correia F, Nogueira A, Magalhães I, Guimarães J, Moreira M, Barradas I, Molinos M, Teixeira L, Pires J, Seabra R, Lains J, Bento V

Digital Versus Conventional Rehabilitation After Total Hip Arthroplasty: A Single-Center, Parallel-Group Pilot Study

JMIR Rehabil Assist Technol 2019;6(1):e14523

URL: <http://rehab.jmir.org/2019/1/e14523/>

doi: [10.2196/14523](https://doi.org/10.2196/14523)

PMID: [31228176](https://pubmed.ncbi.nlm.nih.gov/31228176/)

©Fernando Dias Correia, André Nogueira, Ivo Magalhães, Joana Guimarães, Maria Moreira, Isabel Barradas, Maria Molinos, Laetitia Teixeira, Joaquim Pires, Rosmaninho Seabra, Jorge Lains, Virgílio Bento. Originally published in JMIR Rehabilitation and Assistive Technology (<http://rehab.jmir.org>), 21.06.2019. This is an open-access article distributed under the terms of the Creative Commons Attribution License (<https://creativecommons.org/licenses/by/4.0/>), which permits unrestricted use, distribution, and reproduction in any medium, provided the original work, first published in JMIR Rehabilitation and Assistive Technology, is properly cited. The complete bibliographic information, a link to the original publication on <http://rehab.jmir.org/>, as well as this copyright and license information must be included.