

Images in Cardiovascular Disease



Ruptured Mitral Valve Aneurysm: A Rare Complication of Mitral Valve Endocarditis

Marta Fontes Oliveira , MD, Maria Trêpa , MD, Inês Silveira , MD,
Sofia Cabral, MD, and Severo Torres, MD

Cardiology Department, Centro Hospitalar Universitário do Porto, Porto, Portugal

OPEN ACCESS

Received: May 4, 2019

Revised: May 18, 2019

Accepted: May 30, 2019

Address for Correspondence:

Marta Fontes Oliveira, MD

Cardiology Department, Centro Hospitalar
Universitário do Porto, Rua Heróis de França
701, 1^oesq, 4450-159 Matosinhos, Portugal.
E-mail: marta.fontes.oliveira@gmail.com

Copyright © 2019 Korean Society of
Echocardiography

This is an Open Access article distributed
under the terms of the Creative Commons
Attribution Non-Commercial License ([https://
creativecommons.org/licenses/by-nc/4.0/](https://creativecommons.org/licenses/by-nc/4.0/))
which permits unrestricted non-commercial
use, distribution, and reproduction in any
medium, provided the original work is properly
cited.

ORCID iDs

Marta Fontes Oliveira

<https://orcid.org/0000-0002-6691-9146>

Maria Trêpa

<https://orcid.org/0000-0002-7624-7750>

Inês Silveira

<https://orcid.org/0000-0002-3120-4175>

Conflict of Interest

The authors have no financial conflicts of
interest.

A 69-year-old male patient admitted to the hospital with congestive heart failure. Physical examination presented signs of left heart failure, and cardiac auscultation disclosed a grade III/VI pansystolic murmur at the apex. Transthoracic echocardiography showed a large saccular bulge originating from the anterior mitral valve leaflet with severe mitral regurgitation, and multiple valvular and subvalvular vegetations (**Figure 1**). Transesophageal echocardiography confirmed the diagnosis of complicated endocarditis of the mitral valve with large ruptured anterior mitral valve leaflet aneurysm (2.2 × 2.5 cm) producing severe mitral regurgitation (**Figure 2**). Aortic valve was clear of vegetations although it presented with mild to moderate aortic regurgitation. Blood cultures were positive for *coagulase negative staphylococcus*. A few days later, the patient underwent cardiac surgery for mitral and aortic valve replacement. The patient completed a 6-week antibiotic regimen following surgery and was then successfully discharged with no signs of heart failure.

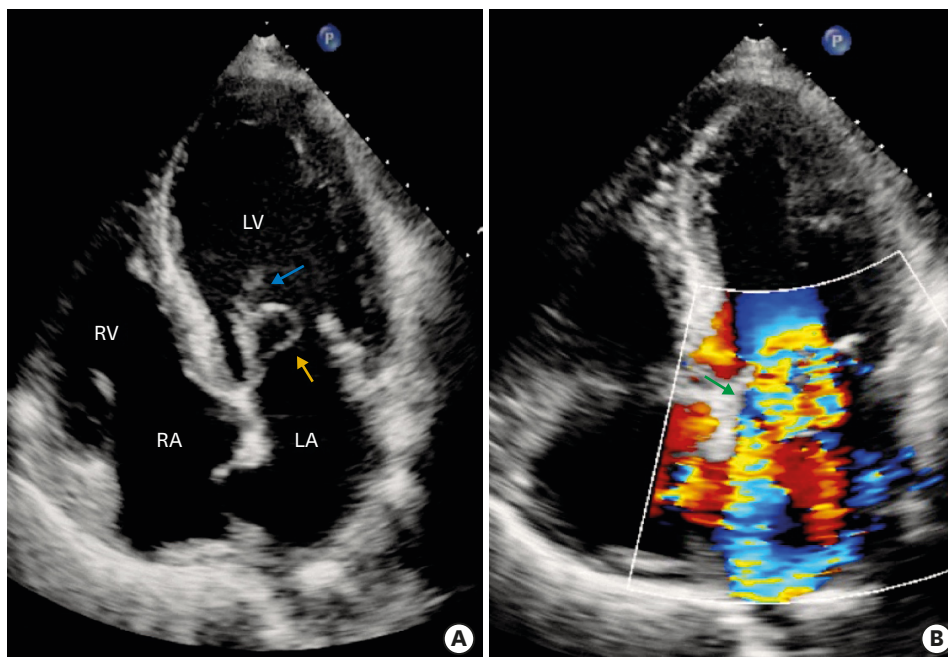


Figure 1. Transthoracic echocardiogram (apical 4-chamber view). (A) Saccular bulge on the atrial side of the anterior mitral valve leaflet (orange arrow) and vegetations (blue arrow). (B) Color Doppler image showing mitral regurgitation jet through the ruptured aneurysm (green arrow). LA: left atrium, LV: left ventricle, RA: right atrium, RV: right ventricle.

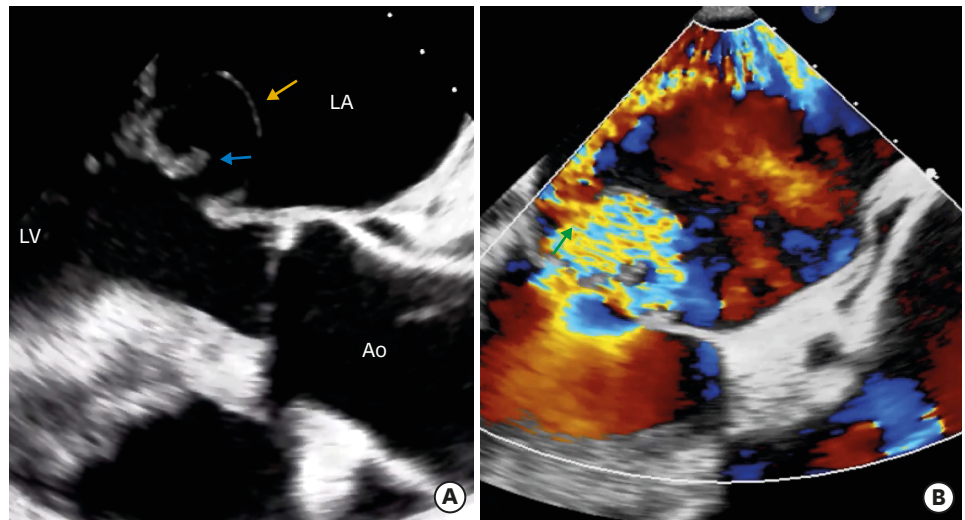


Figure 2. Transesophageal echocardiogram (3-chamber view). (A) Anterior mitral valve leaflet with large ruptured aneurysm (2.2 × 2.5 cm) (orange arrow) and a large moving mitral vegetation (blue arrow). (B) Transesophageal echocardiogram (2-chamber view). Color Doppler image showing severe mitral regurgitation through the ruptured aneurysm (green arrow). Ao: ascending aorta, LA: left atrium, LV: left ventricle.

Mitral valve aneurysms are rare and potentially fatal. Although they can occur in a non-infectious setting, most frequently they are a consequence of infective endocarditis and affect the anterior leaflet of the mitral valve.¹⁾ It is thought that infection causes leaflet degeneration through localized inflammation, dissection and consequent expansion of the valvular tissue towards the left atrium.²⁾ Although conservative management with close follow-up may be possible in some aneurysms, mitral valve replacement surgery should be promptly considered in complicated cases.³⁾

This case highlights the importance of appropriate imaging for early detection of valvular complications and timely surgical intervention to achieve favorable outcomes.

SUPPLEMENTARY MATERIALS

Movie 1

Transesophageal echocardiogram (3-chamber view). Large ruptured aneurysm (2.2 × 2.5 cm) in the anterior mitral valve leaflet with a large moving vegetation inside. Ao: ascending aorta, LA: left atrium, LV: left ventricle, MVA: mitral valve aneurysm.

[Click here to view](#)

Movie 2

Transesophageal echocardiogram (2-chamber view). Color Doppler image showing severe mitral regurgitation through the ruptured aneurysm. LA: left atrium, LV: left ventricle, MR: mitral regurgitation, MVA: mitral valve aneurysm.

[Click here to view](#)

REFERENCES

1. Guler A, Karabay CY, Gursoy OM, et al. Clinical and echocardiographic evaluation of mitral valve aneurysms: a retrospective, single center study. *Int J Cardiovasc Imaging* 2014;30:535-41.
[PUBMED](#) | [CROSSREF](#)
2. Pena JLB, Bomfim TO, Fortes PRL, Simão-Filho C, de Souza Andrade-Filho J. Mitral valve aneurysms: clinical characteristics, echocardiographic abnormalities, and possible mechanisms of formation. *Echocardiography* 2017;34:986-91.
[PUBMED](#) | [CROSSREF](#)
3. Silbiger JJ. Review: Mitral valve aneurysms in infective endocarditis: mechanisms, clinical recognition, and treatment. *J Heart Valve Dis* 2009;18:476-80.
[PUBMED](#)