

THE
UNIVERSITY
OF RHODE ISLAND

University of Rhode Island
DigitalCommons@URI

Kinesiology Faculty Publications

Kinesiology

5-12-2020

Relationship between maximal incremental and high-intensity interval exercise performance in elite athletes

Shih-Chieh Chang

Alessandra Adami

Hsin-Chin Lin

Yin-Chou Lin

Carl PC Chen

See next page for additional authors

Follow this and additional works at: https://digitalcommons.uri.edu/kinesiology_facpubs

Authors

Shih-Chieh Chang, Alessandra Adami, Hsin-Chin Lin, Yin-Chou Lin, Carl PC Chen, Tieh-Cheng Fu, Chih-Chin Hsu, and Shu-Chun Huang

RESEARCH ARTICLE

Relationship between maximal incremental and high-intensity interval exercise performance in elite athletes

Shih-Chieh Chang¹*, Alessandra Adami²*, Hsin-Chin Lin¹, Yin-Chou Lin^{1,3}, Carl P. C. Chen^{1,3,4}, Tieh-Cheng Fu^{4,5}, Chih-Chin Hsu^{4,5}, Shu-Chun Huang^{1,4,6,7*}

1 Department of Physical Medicine & Rehabilitation, Chang Gung Memorial Hospital, Linkou, Taiwan, **2** Department of Kinesiology, University of Rhode Island, Kingston, RI, United States of America, **3** Department of Physical Medicine & Rehabilitation, Chang Gung Memorial Hospital, Taoyuan branch, Taiwan, **4** College of Medicine, Chang Gung University, Kwei-Shan, Tao-Yuan County, Taiwan, **5** Department of Physical Medicine and Rehabilitation, Chang Gung Memorial Hospital, Keelung, Taiwan, **6** Healthy Aging Research Center, Chang Gung University, Taoyuan City, Taiwan, **7** Department of Physical Medicine and Rehabilitation, New Taipei Municipal Tucheng Hospital, Chang Gung Memorial Hospital, New Taipei, Taiwan

* These authors contributed equally to this work.

* h0711@ms13.hinet.net



OPEN ACCESS

Citation: Chang S-C, Adami A, Lin H-C, Lin Y-C, Chen CPC, Fu T-C, et al. (2020) Relationship between maximal incremental and high-intensity interval exercise performance in elite athletes. PLoS ONE 15(5): e0226313. <https://doi.org/10.1371/journal.pone.0226313>

Editor: Juan M. Murias, University of Calgary, CANADA

Received: November 21, 2019

Accepted: April 27, 2020

Published: May 12, 2020

Copyright: © 2020 Chang et al. This is an open access article distributed under the terms of the [Creative Commons Attribution License](https://creativecommons.org/licenses/by/4.0/), which permits unrestricted use, distribution, and reproduction in any medium, provided the original author and source are credited.

Data Availability Statement: All relevant data are within the manuscript and its Supporting Information files.

Funding: This research was supported by (1) Ministry of Science and Technology (Grant No. 104-2314-B-182A-045-MY2 and 106-2314-B-182A-134-MY3, <https://www.most.gov.tw/?l=de>) (2) Chang Gung Memorial Hospital (grant No. CMRPG3E1561/2, <http://www.chang-gung.com/en/>) to Shu-Chun Huang and (3) Healthy Aging Research Center, Chang Gung University and the

Abstract

This descriptive study aimed to explore the physiological factors that determine tolerance to exertion during high-intensity interval effort. Forty-seven young women (15–28 years old) were enrolled: 23 athletes from Taiwan national or national reserve teams and 24 moderately active females. Each participant underwent a maximal incremental INC (modified Bruce protocol) cardiopulmonary exercise test on the first day and high-intensity interval testing (HIIT) on the second day, both performed on a treadmill. The HIIT protocol involved alternation between 1-min effort at 120% of the maximal speed, at the same slope reached at the end of the INC, and 1-min rest until volitional exhaustion. Gas exchange, heart rate (HR), and muscle oxygenation at the right vastus lateralis, measured by near-infrared spectroscopy, were continuously recorded. The number of repetitions completed (R_{lim}) by each participant was considered the HIIT tolerance index. The results showed a large difference in the R_{lim} (range, 2.6–12.0 repetitions) among the participants. Stepwise linear regression revealed that the variance in the R_{lim} within the cohort was related to the recovery rates of oxygen consumption ($\dot{V}O_2$), HR at the second minute after INC, and muscle tissue saturation index at exhaustion ($R = 0.644$). In addition, age was linearly correlated with R_{lim} (adjusted $R = -0.518$, $p < 0.0001$). In conclusion, the recovery rates for $\dot{V}O_2$ and HR after the incremental test, and muscle saturation index at exhaustion, were the major physiological factors related to HIIT performance. These findings provide insights into the role of the recovery phase after maximal INC exercise testing. Future research investigating a combination of INC and HIIT testing to determine training-induced performance improvement is warranted.

Taiwan Ministry of Education's Higher Education Deep Plowing Program (Grant Numbers EMRPD1H0351 and EMRPD1H0551, <http://www.cgu.edu.tw/bin/home.php?Lang=en>) to Shu-Chun Huang.

Competing interests: The authors have declared that no competing interests exist.

Abbreviations: Ath, athletes; ATT, adipose tissue thickness; BCM, body cell mass; EqCO₂, ventilatory equivalent for CO₂; EqO₂, ventilatory equivalent for O₂; FFM, fat free mass; HHb, deoxy-(hemoglobin +myoglobin); HR, heart rate; HR_{max}, maximal HR; HR reserve, heart rate reserve; ΔHR0.5, HR_{max} – HR at 0.5 min recovery; ΔHR1, HR_{max} – HR at 1 min recovery; ΔHR2, HR_{max} – HR at 2 min recovery; ΔHR0.5/, ΔHR0.5/HR_{max}; ΔHR1/, ΔHR1/HR_{max}; ΔHR2/, ΔHR2/HR_{max}; HRt_{1/2}, time span the heart rate recovers to half; HIIT, high-intensity interval testing; INC, maximal incremental exercise test; MA, moderately active participants; Max O₂ pulse, maximal VO₂/HR; NIRS, near-infrared spectroscopy; O₂Hb, oxy-(hemoglobin +myoglobin); ΔO₂Hb0.5, O₂Hb at 0.5 min during recovery – peak O₂Hb; ΔO₂Hb1, O₂Hb at 1 min during recovery – peak O₂Hb; ΔO₂Hb2, O₂Hb at 2 min during recovery – peak O₂Hb; ΔO₂Hb0.5/, ΔO₂Hb0.5/(maximal O₂Hb – minimal O₂Hb) during recovery; ΔO₂Hb1 /, ΔO₂Hb1/(maximal O₂Hb – minimal O₂Hb) during recovery; ΔO₂Hb2/, ΔO₂Hb2/(maximal O₂Hb – minimal O₂Hb) during recovery; PBF, percent body fat; PCR, phosphocreatine; R_{lim}, number of total repetitions to limitation (i.e., exhaustion) in high-intensity interval exercise test; SLM, soft lean mass; SMM, skeletal muscle mass; SMLA, segmental muscle mass, left arm; SMLL, segmental muscle mass, left leg; SMRA, segmental muscle mass, right arm; SMRL, segmental muscle mass, right leg; SMTR, segmental muscle mass, trunk; TBM/FFM, total body mass/fat free mass; T_{1/2}, the time span the variable changes in half; Thb, total-(hemoglobin +myoglobin); TSI, tissue saturation index; TSI_{INC}, tissue saturation index at exhaustion (immediately before recovery) during INC; ΔTSI0.5, TSI at 0.5 min during INC recovery – peak TSI; ΔTSI1, TSI at 1 min during INC recovery – peak TSI; ΔTSI2, TSI at 2 min during INC recovery – peak TSI; ΔTSI0.5/, ΔTSI0.5/(maximal TSI – minimal TSI) during recovery; ΔTSI1 /, ΔTSI1/(maximal TSI – minimal TSI) during recovery; ΔTSI2/, ΔTSI2/(maximal TSI – minimal TSI) during recovery; VCO₂, rate of carbon dioxide production; VE, minute ventilation; VO₂, rate of oxygen consumption; VO_{2max}, maximal VO₂; ΔVO20.5, VO_{2max} – VO₂ at 0.5 min recovery; ΔVO21, VO_{2max} – VO₂ at 1 min recovery; ΔVO22, VO_{2max} – VO₂ at 2 min

Introduction

Currently, incremental exercise testing (INC) is widely used to assess cardiopulmonary fitness among various populations from elite athletes and semi-professional players to chronic cardiovascular and lung disease patients [1–4]. The INC is used to quantify whole-body all-out performance, and for athletes, it has become the gold-standard evaluation to identify exercise intensity zones upon which athletic training programs are designed. Since Taylor et al. [5] showed that the response to INC tests is strongly correlated with the type of protocol followed and the personal characteristics of the individual undergoing the test, much attention has been given to designing optimal standardized INC tests that account for fitness abilities and testing goals (e.g., determination of ventilatory thresholds, maximal oxygen consumption ($\dot{V}O_{2max}$), etc.) [4]. In this context, Muscat et al. [6] recommended the use of a ramped increase in work rate to obtain a reliable evaluation of mode-specific fitness to determine the most favorable training protocols.

In many competitive ball games, including soccer and basketball, and games such as badminton, a typical mode-specific task is represented by the combination of repeated efforts and recovery phases that closely replicate actual field-match performance. At high professional levels, the intensity of this performance can be compared to high-intensity interval workouts. High-intensity interval training (HIIT), a very popular training methodology, can be described as a workout strategy alternating between short-duration high-intensity efforts and passive or active recovery periods. Independent of the format of the training protocol (i.e., intensity, duration, number of bouts, and sets), HIIT has several practical advantages that make it appealing to ball sports players, such as the possibility of improving rapidly (e.g., to shorten the preparation periods) and maintaining optimal fitness for a longer time period due to a faster recovery capacity [7]. The main goals for using HIIT as a preferred training method for professional players are to quickly improve whole-body aerobic capacity; to reduce delay between mechanical requests (i.e., exercise tasks) and muscle metabolic response; to shorten the recovery time between repeated efforts, rounds, and matches; and to reduce the onset of fatigue. These performance improvements are related to a series of aerobic and anaerobic adaptations induced by HIIT, such as an increase in skeletal muscle mitochondria dimensions, higher blood pH tolerance, and increased anaerobic capacities [7–12], among others.

Even though HIIT has been widely used in practice, it is seldom used as a testing protocol [13, 14], with INC being used to plan the training calendar. Very few studies with small groups of soccer players have used intermittent running tests (e.g., YO-YO intermittent recovery test) to determine changes in performance after the players followed HIIT training [15–18]. To date, none have considered the relationship between INC and HIIT protocols in evaluating the performance of professional team players.

In 2015–2016, a group of reserve athletes from the Taiwan national soccer, basketball, and badminton teams visited our laboratory at the Chang Gung Memorial Hospital for a series of routine performance evaluations. During that time, we administered a traditional INC protocol and HIIT. We set the HIIT exercise intensity at 120% of the highest velocity reached during the INC, and we considered the number of the repetitions completed (R_{lim}) as the tolerance index for each participant. The main aim of this descriptive study was to determine which factors are strongly associated with the limitations in HIIT. We hypothesized that R_{lim} in HIIT varies greatly among individuals despite the same relative intensity and exercise-recovery duration and pattern, which we suggest is primarily due to individual recovery capacities.

recovery; $\Delta\dot{V}O_{20.5}$, $\Delta\dot{V}O_{20.5}/\text{maximal } \dot{V}O_2$; $\Delta\dot{V}O_{21}$, $\Delta\dot{V}O_{21}/\text{maximal } \dot{V}O_2$; $\Delta\dot{V}O_{22}$, $\Delta\dot{V}O_{22}/\text{maximal } \dot{V}O_2$; $1/\text{maximal } \dot{V}O_{2rt1/2}$, time span the $\dot{V}O_2$ recovers to half.

Materials and methods

Participants

All participants provided written informed consent after receiving oral and written explanations of the experimental procedures and associated risks. This research was performed in accordance with the ethical standards of the Declaration of Helsinki. This study enrolled 47 athletes and moderately active (MA) female participants. The athletes were reserves for the national Taiwan soccer, basketball, and badminton teams. The participants assigned to the MA group were young women who participated in moderate-intensity exercises for at least 60 min weekly [19]. The experiment protocol was approved by the Chang Gung Memorial Hospital Institutional Review Board.

Protocol

The participants visited our laboratory at the Chang Gung Memorial Hospital twice to perform an INC maximal test and HIIT. Each participant was instructed to refrain from vigorous exercise or caffeine intake for 24 h prior to testing and to have at least 8 h of sleep the night before the tests. All assessments took place approximately at the same time of the day under controlled environmental conditions (24°C, 63% humidity).

Anthropometric and body composition evaluations. At the beginning of the visit, basic anthropometric characteristics (height and weight) were recorded. Subsequently, whole-body compositions were determined using the InBody s10 analyzer (Seoul, Korea) and by measuring electrical resistance to four different frequencies (5, 50, 250, and 500 kHz) [20–22]. Each participant lay on a padded table for the entire duration of the testing and the sensors to measure electrical resistance were placed at the level of each body segment as per the manufacturer's instructions. The participants were instructed to fast for 2 h prior to the test, which was 20 min long.

Cardiopulmonary testing. During the first visit, maximal INC test was performed. The test started with 1 min of walking at a rate of 1 mile/h, followed by an incremental modified Bruce protocol conducted until voluntary exhaustion (i.e., subject failed to keep up with the treadmill speed despite strong encouragement) was reached. The INC was defined as maximal when the following criteria were met: (i) no further increase in $\dot{V}O_2$ between the two stages sustained for at least 2 min despite strong encouragement ($\dot{V}O_2$ plateau was attained), (ii) heart rate (HR) exceeds 85% of its predicted maximum, and (iii) the respiratory exchange ratio exceeds 1.15 [2]. Immediately after exhaustion, an active recovery phase at the individual's walking pace was administered for 1 min, followed by 3 min of passive recovery.

During the second visit that took place at least 24 h after the first visit, a supra-maximal HIIT test was performed. The speed was set at 120% of the highest velocity reached during the INC, and the slope was the same as the INC final stage. At the beginning of the visit, the participants became familiar with the protocol by simulating one repetition at 120% of the highest velocity attained by the individual during INC, and then recovery. After a 10-min rest, the HIIT testing began with 1 min of walking at a rate of 1 mile/h, followed by intermittent 1-min sprinting interspersed with 1-min passive recovery until volitional exhaustion. The total number of repetitions completed before exhaustion was recorded to define the R_{lim} for each individual.

Measurements

All exercise assessments were performed on an electromechanically braked treadmill (VIASYS™) that was connected to and operated by a metabolic cart (MasterScreen CPX,

CareFusion, Hoechberg, Germany) that also allowed continuous, breath-by-breath measurements of pulmonary minute ventilation (\dot{V}_E) and mouth gas exchange (i.e., $\dot{V}O_2$ and rate of carbon dioxide production [$\dot{V}CO_2$]). Before each test, the gas analyzers and the turbine flow meter of the system were calibrated as per the manufacturer's instructions, using a gas mixture of known concentrations (FO_2 : 0.16; FCO_2 : 0.05; N_2 as balance) and an automatic high and low pumping flow system. Heart rate was determined from the R-R interval on a 12-lead electrocardiogram.

Muscle oxygenation was evaluated by means of a portable continuous-wave and spatially resolved near-infrared spectroscope (NIRS) with Bluetooth (PortaMon, Artinis, the Netherlands). Relative concentrations of deoxyhemoglobin+myoglobin (HHb) and oxyhemoglobin+myoglobin (O_2Hb) and the tissue saturation index (TSI, %) [23] were continuously recorded during the exercises at the level of the peripheral muscle tissue, 1.5 cm beneath the probe (interoptode distance: 3 cm). From these measurements, the relative changes in total hemoglobin and myoglobin ($THb = HHb + O_2Hb$) were calculated. The NIRS probe was wrapped in plastic foil and placed longitudinally to the vastus lateralis belly on the right thigh, 15 cm above the upper margin of the patella, and secured with an elastic band to minimize the possibility of external light influencing the signal. The sampling rate was set at 1 Hz.

Data analysis

The individual $\dot{V}O_{2max}$ was determined by analyzing the INC breath-by-breath gas exchange data. If a plateau was present (increase of $<2 \text{ ml}\cdot\text{kg}^{-1}\cdot\text{min}^{-1}$ despite an increased workload [24, 25]), the $\dot{V}O_{2max}$ was calculated by averaging the final 30 s recorded before exhaustion; otherwise, the highest $\dot{V}O_2$ value recorded within the last 30 seconds of test was retained as the individual $\dot{V}O_{2max}$ [26]. Maximal HR was defined as the highest HR value in the breath-by-breath data.

For the recovery phase after INC, a five-breath moving average was applied to the $\dot{V}O_2$ data [27], previously interpolated to 1-sec intervals [28]. The data at time point 30, 60, and 120 s were chosen for further analysis. For the NIRS data (i.e., TSI and O_2Hb), the 1-Hz raw data were used to calculate the time points at 30, 60, and 120 s, and $t_{1/2}$ in the recovery phase.

The $\dot{V}O_2$, HR, O_2Hb , and TSI changes at 0.5 min recovery after INC were calculated, as suggested by Turner et al. [29]:

$$\Delta\dot{V}O_{20.5} = \dot{V}O_{2max} - \dot{V}O_2 \text{ at 30s in the recovery phase} \quad \text{Eq 1}$$

$$\Delta\dot{V}O_{20.5}/ = \Delta\dot{V}O_{20.5}/\dot{V}O_{2max}. \quad \text{Eq2}$$

The above equations were also applied to determine the deltas (i.e., Eq 1) and the change ratio (i.e., Eq 2) at the first and second minute, for which rate of $\dot{V}O_2$ was the O_2 uptake measured at 60- and 120-s recovery, respectively. The same approach was used for calculating HR and the NIRS-derived variables (TSI, O_2Hb), for the same time points during the recovery phase of the INC test. In addition, $TSIrt_{1/2}$, $O_2Hbrt_{1/2}$, $\dot{V}O_{2rt_{1/2}}$, and $HRrt_{1/2}$ are the time spans required for the values to achieve half of their recovery to the baseline value (*Min* to *Max*) (Fig 1).

Statistical analysis

Data are presented as means and standard deviations (SDs). Statistical significance was set at $p < 0.05$. Pearson's, Spearman's, and partial correlations were used to determine the degree of

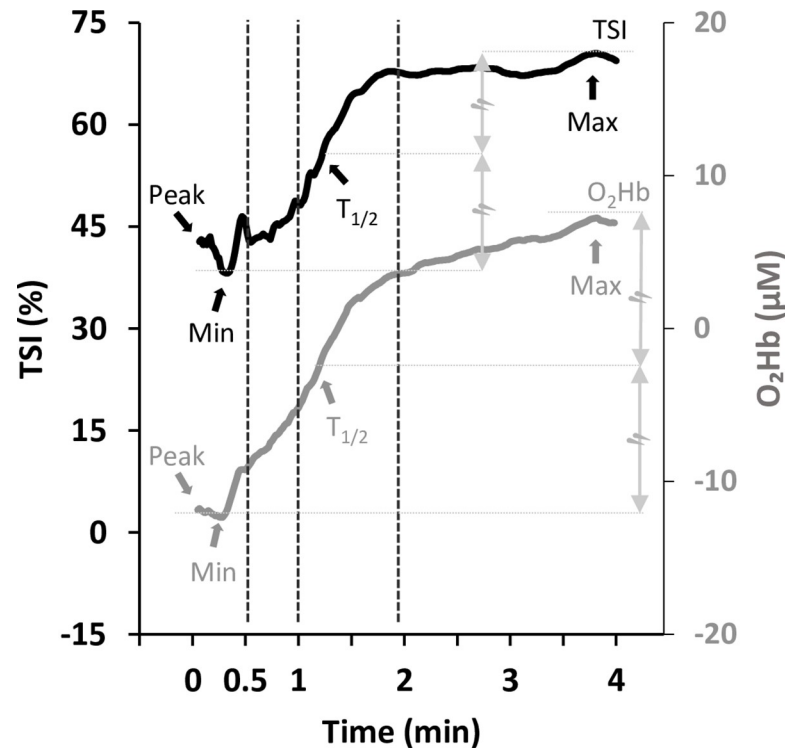


Fig 1. NIRS-derived tissue saturation index (TSI, black continuous trace) and oxygenated-(hemoglobin + myoglobin) (O_2Hb , grey continuous trace) responses during the recovery phase of incremental (INC) exercise tests. Color-coded arrows indicate the maximum (*Max*) and minimum (*Min*) values for both parameters reached during recovery; *Peak* indicates the value attained at the end of the incremental test (at min zero, 0, on the x-axis).

<https://doi.org/10.1371/journal.pone.0226313.g001>

association between anthropometric and physiological variables versus R_{lim} . Since the population sample size allocated to the final analysis was 47, the first five parameters with the greatest correlation coefficients were included in the regression model. Forward stepwise linear regression was performed to identify the R_{lim} predictors. Analyses were performed using SPSS 22.0 (SPSS, Inc., Chicago, IL, USA).

Results

Forty-seven participants ($n = 23$ athletes; $n = 24$ MA) successfully completed the experimental protocol phases. All the participants reached a $\dot{V}O_2$ plateau at the end of the INC test. The R_{lim} differed greatly among participants and ranged from 2.6 to 12.0 repetitions. Pearson's or Spearman's correlations showed that R_{lim} was significantly correlated with age ($r = -0.748$), group ($r = 0.74$), and percent body fat ([PBF] $r = 0.371$). Age was still significantly correlated with R_{lim} ($R = -0.518$; $p < 0.0001$) after adjusting variables with co-linearity, including group and PBF in partial correlations (Fig 2). The PBF did not correlate with R_{lim} after adjusting for age and group ($R = -0.194$, $p = 0.201$). When the HIIT and INC were compared by univariate analyses, several physiological parameters during INC were significantly correlated with R_{lim} . Those parameters with a correlation coefficient >0.3 and p -values <0.05 are shown in S1. The five physiological parameters with the highest correlation coefficients ($\Delta\dot{V}O_{2,2}$, $\dot{V}O_{2,max}$, $\Delta HR2$, TSI_{INC} , and $\Delta HR2$) were evaluated in the forward linear stepwise regression model (Table 1). The explanatory power in model 3 of multiple linear regression was 0.415. It revealed that R_{lim} was primarily determined by $\Delta\dot{V}O_{2,2}$, $\Delta HR2$, and TSI_{INC} . Their scatter

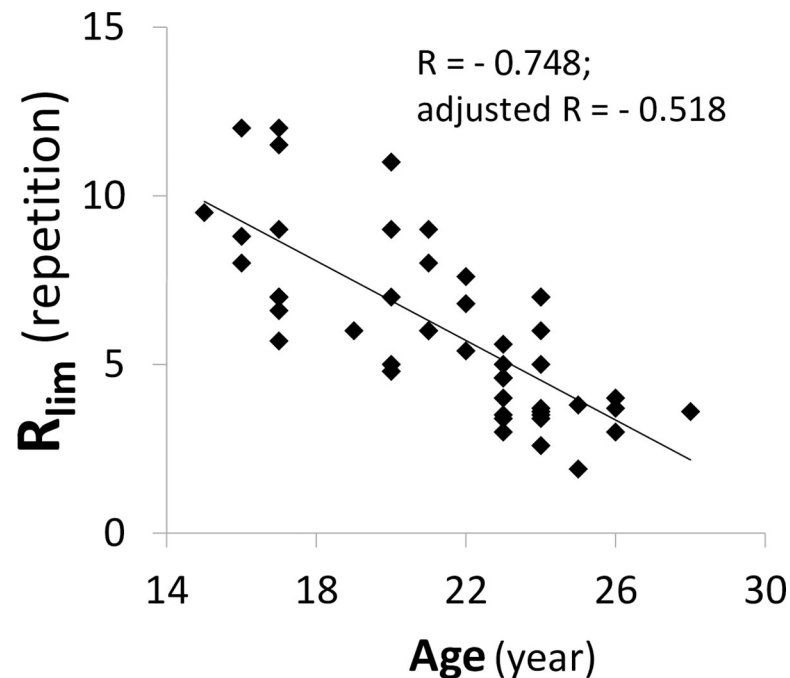


Fig 2. Scatter plots showing the relationship between the total number of high-intensity interval test repetitions and age (Panel A). A partial correlation was utilized to adjust the variables with co-linearity, including group and percent body fat (PBF).

<https://doi.org/10.1371/journal.pone.0226313.g002>

plots to R_{lim} are shown in Fig 3. Correlations were positive in $\Delta\dot{V}O_{22}$ and $\Delta HR2/$ and negative in TSI_{INC} (Fig 3A, 3B and 3C).

The main INC and HIIT findings are presented in Table 2. As expected, the athletes had significantly higher $\dot{V}O_{2max}$, maximal O_2 pulse, peak \dot{V}_E , lower TSI_{INC} , and better performance in HIIT (R_{lim} : 7.8 ± 2.3 vs. 4.2 ± 1.4 , $p < 0.05$) compared to the MA participants.

The main results in the recovery phase of INC are presented in Table 3. Heart rate and $\dot{V}O_2$ recovery were faster in the athletes than in the MA participants. Muscle oxygenation recovery showed no difference between groups; while $\Delta HR2/$ and $\Delta\dot{V}O_{22}$, the major determinants of

Table 1. Stepwise linear regression results on R_{lim} predictors.

	β	t	P(β)	R	ΔR^2	F
Model 1				0.471	0.222	9.396*
$\Delta\dot{V}O_{22}$	0.471	3.065	0.04			
Model 2				0.572	0.106	7.798*
$\Delta\dot{V}O_{22}$	0.368	2.419	0.021			
$\Delta HR2/$	0.342	2.247	0.032			
Model 3				0.644	0.086	7.304*
$\Delta\dot{V}O_{22}$	0.282	1.884	0.069			
$\Delta HR2/$	0.317	2.192	0.036			
TSI_{peak}	-0.309	-2.139	0.040			

* $p < 0.05$; the p-value indicates the overall significance of the linear regression model

P(β): p-value for β

<https://doi.org/10.1371/journal.pone.0226313.t001>

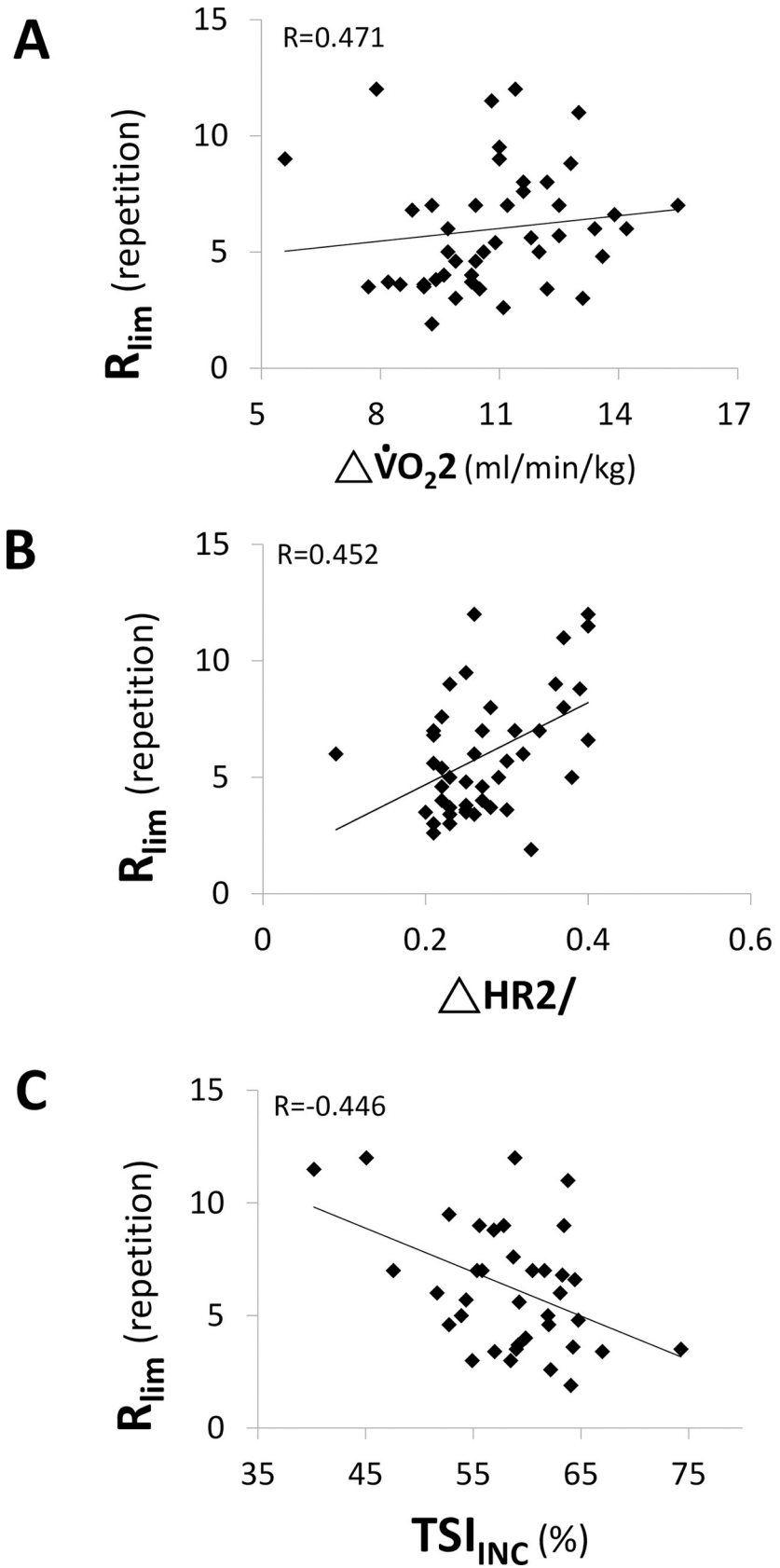


Fig 3. Scatter plots showing the relationship between the total number of high-intensity interval test repetitions and $\Delta\dot{V}O_{22}$ ($= \dot{V}O_{2max} - \dot{V}O_2$ at 2 min during recovery; **Panel A**), $\Delta HR2/$ ($= (HR_{max} - HR$ at 2 min during recovery)/ maximal HR; **Panel B**) or TSI_{INC} (tissue saturation index at exhaustion; **Panel C**), determined by incremental exercise test data.

<https://doi.org/10.1371/journal.pone.0226313.g003>

R_{lim} according to the stepwise regression (Table 1), were significantly higher in athletes than in the MA participants.

Anthropometric data showed no differences in body weight, body height, and body mass index (BMI); however, age was significantly different between groups (Ath vs. MA = 19 ± 3 vs. 24 ± 2 years; $p < 0.05$) between athletes and MA participants. Table 4 shows the body composition data. Athletes had higher soft lean mass (SLM), skeletal muscle mass (SMM), segmental muscle mass at right arm (SMRA), segmental muscle mass at right leg (SMRL), segmental muscle mass at trunk (SMTR), fat-free mass (FFM), protein, body cell mass (BCM), and lower PBF than the MA group. The segmental muscle mass at left arm (SMLA) and segmental muscle mass at left leg (SMLL) p-values were 0.051 and 0.055, respectively.

Discussion

This descriptive study aimed to investigate the relationship between the ability to sustain HIIT and fitness level, determined by a modified Bruce incremental protocol. We considered the number of HIIT repetitions completed as the tolerance index for each participant (i.e., the higher number of HIIT repetitions completed, the higher the effort tolerance). Our results showed that the total number of repetitions needed to reach the participant's limitation (R_{lim}) was widely distributed among the study population, ranging from 2.6 to 12.0 repetitions (mean: 6.0 ± 2.6 repetitions). Linear regression analyses showed that HR recovery, $\dot{V}O_2$ recovery, and TSI_{INC} were the main variables determining the ability to perform HIIT for long durations (i.e., higher number of repetitions completed).

Table 2. Average values of physiological parameters for the athlete and MA groups in INC and HIIT tests.

	Ath	MA
INC		
$\dot{V}O_{2max}$ (mL.min ⁻¹ .Kg ⁻¹)	45.7 ± 6.0*	37.8 ± 7.6
peak HR (bpm)	185.0 ± 8.4	187.4 ± 10.0
peak O ₂ pulse (mL per beat)	12.8 ± 1.8*	10.4 ± 1.9
EqCO ₂ nadir	24.3 ± 2.2	24.1 ± 2.2
EqO ₂ nadir	20.4 ± 2.1	21.1 ± 2.7
peak V _E (mL.min ⁻¹)	83.0 ± 13.5*	76.3 ± 14.0
V _E /VCO ₂ slope	26.8 ± 3.3	25.4 ± 6.9
TSI_{INC} (%)	56.4 ± 6.6*	61.0 ± 5.1
HHb _{peak} (μM)	0.9 ± 5.0	2.1 ± 5.0
O ₂ Hb _{peak} (μM)	-4.1 ± 4.7	-6.6 ± 4.5
THb _{peak} (μM)	-3.3 ± 6.5	-4.5 ± 7.9
HIIT		
R_{lim} (repetition)	7.8 ± 2.3*	4.2 ± 1.4

Values are shown as mean ± SD

* $p < 0.05$ in Mann-Whitney U test; INC: maximal incremental exercise testing; HIIT: high-intensity interval testing; Ath: athletes; MA: moderately active participants; HR: heart rate; V_E: ventilation; TSI: tissue saturation index; HHb: deoxyhemoglobin; O₂Hb: oxyhemoglobin; THb: total hemoglobin; TSI_{peak} : nadir of tissue saturation index during INC; EqCO₂: ventilator equivalent for CO₂; EqO₂: ventilatory equivalent for O₂

<https://doi.org/10.1371/journal.pone.0226313.t002>

Table 3. Comparison of physiologic response of athlete and MA groups during the recovery phase at the end of maximal incremental exercise testing.

	Ath	MA		Ath	MA		Ath	MA		Ath	MA
ΔHR0.5	9.4 ± 6.3	8.8 ± 3.5	Δ $\dot{V}O_2$ 0.5	14.1 ± 5.9*	8.8 ± 3.5	ΔTSI0.5	3.52 ± 3.42	3.01 ± 2.50	ΔO ₂ Hb0.5	3.73 ± 2.52	3.05 ± 2.33
ΔHR1	24.2 ± 9.0	20.1 ± 6.3	Δ $\dot{V}O_2$ 1	23.8 ± 4.3*	20.1 ± 6.3	ΔTSI1.0	8.19 ± 4.42	7.35 ± 3.55	ΔO ₂ Hb1.0	8.24 ± 3.05	7.72 ± 4.00
ΔHR2	56.5 ± 11.8*	45.5 ± 10.1	Δ $\dot{V}O_2$ 2	34.6 ± 5.5*	27.6 ± 6.8	ΔTSI2.0	12.73 ± 6.47	11.23 ± 2.93	ΔO ₂ Hb2.0	11.82 ± 3.37	10.94 ± 4.53
ΔHR0.5/	0.05 ± 0.03	0.05 ± 0.02	Δ $\dot{V}O_2$ 0.5/	0.3 ± 0.1	0.05 ± 0.02	ΔTSI0.5/	0.23 ± 0.21	0.21 ± 1.16	ΔO ₂ Hb0.5/	0.27 ± 0.17	0.20 ± 0.13
ΔHR1/	0.13 ± 0.05	0.11 ± 0.03	Δ $\dot{V}O_2$ 1/	0.5 ± 0.1	0.11 ± 0.03	ΔTSI1.0/	0.57 ± 0.23	0.51 ± 0.21	ΔO ₂ Hb1.0/	0.59 ± 0.16	0.50 ± 0.19
ΔHR2/	0.31 ± 0.06*	0.24 ± 0.06	Δ $\dot{V}O_2$ 2/	0.7 ± 0.0	0.24 ± 0.06	ΔTSI2.0/	0.84 ± 0.16	0.77 ± 0.15	ΔO ₂ Hb2.0/	0.83 ± 0.12	0.70 ± 0.19
HR _{r1/2} (s)	84.9 ± 18.6	92.4 ± 12.2	$\dot{V}O_{2r1/2}$ (s)	53.5 ± 8.6	92.4 ± 12.2	TSI _{r1/2} (s)	53.1 ± 14.1	29.3 ± 14.1	O ₂ Hb _{r1/2} (s)	59.5 ± 23.7	49.0 ± 15.6

Data are mean ± SD

* Ath vs. MA, *p* < 0.05 in Mann-Whitney U test

Ath: athletes; MA: moderately active participants

ΔHR0.5' (min⁻¹) = peak HR – HR at 0.5 min recovery; ΔHR1 (min⁻¹) = peak HR – HR at 1 min recovery; ΔHR2(min⁻¹) = peak HR – HR at 2 min recovery; ΔHR0.5/ = ΔHR0.5/ maximal HR; ΔHR1/ = ΔHR1/ maximal HR; ΔHR2/ = ΔHR2/maximal

The above equations also applied to $\dot{V}O_2$ (mL.min⁻¹.Kg⁻¹)

ΔTSI0.5 (μM) = TSI at 0.5 min recovery—peak TSI; ΔTSI1 (μM) = TSI at 1 min recovery—peak TSI; ΔTSI2 (μM) = TSI at 2 min recovery—peak TSI; ΔTSI0.5/ = ΔTSI0.5/ (maximal TSI–minimal TSI) recovery; ΔTSI1 / = ΔTSI1/ (maximal TSI–minimal TSI) recovery; ΔTSI2/ = ΔTSI2/ (maximal TSI–minimal TSI) recovery

The above equations also applied to O₂Hb (μM)

<https://doi.org/10.1371/journal.pone.0226313.t003>

Parameters derived from INC influencing R_{lim}

Traditionally, INC tests have been performed to obtain a physiological quantification (e.g., $\dot{V}O_{2max}$) reflecting the whole-body cardiopulmonary fitness of an individual. Maximal $\dot{V}O_2$, the main parameter determined by INC testing procedures, and anaerobic threshold are used

Table 4. Body composition characteristics of participants.

	Ath	MA
SMM (Kg)	23.6 ± 2.3*	22.2 ± 2.3
Fat (Kg)	11.8 ± 2.7	13.7 ± 3.8
PBF (%)	21.5 ± 4.1*	24.9 ± 4.5
SLM (Kg)	40.4 ± 3.7*	38.3 ± 3.7
FFM (Kg)	42.9 ± 3.9*	40.6 ± 3.9
SMRA (Kg)	2.1 ± 0.3*	1.9 ± 0.3
SMLA (Kg)	2.0 ± 0.3	1.9 ± 0.3
SMTR (Kg)	18.8 ± 1.8*	17.9 ± 1.7
SMRL (Kg)	6.9 ± 0.8*	6.5 ± 0.8
SMLL (Kg)	6.9 ± 0.7	6.6 ± 0.8
Protein (Kg)	8.5 ± 0.8*	8.0 ± 0.8
BCM (Kg)	28.0 ± 2.6*	26.6 ± 2.6
TBM/FFM (%)	73.3 ± 0.2	73.3 ± 0.2

Value are shown as Mean ± SD

* *p* < 0.05 in Mann-Whitney U test; Ath: athletes; MA: moderately active subjects; SMM: Skeletal Muscle Mass; PBF: percent body fat; SLM: Soft Lean Mass; FFM: Fat Free Mass; SMRA: segmental muscle right arm; SMLA: segmental muscle left arm; SMTR: segmental muscle trunk; SMRL: segmental muscle right leg; SMLL: segmental muscle left leg; BCM: body cell mass; TBM/FFM: total body mass/fat free mass

<https://doi.org/10.1371/journal.pone.0226313.t004>

to describe the ability of the cardiopulmonary system to integrate with metabolic and central nervous system activities [3]. In this study, participants may reach similar $\dot{V}O_{2\max}$ values at the end of the INC test (Fig 4A), but they significantly differed in the number of repetitions completed at the end of HIIT (see example of two representative subjects that completed 12.0 vs. 7.7 repetitions, respectively; Fig 4). To determine which physiological parameters can explain the large R_{lim} variance in this cohort, linear regression analyses were performed.

Recovery of $\dot{V}O_2$ ($\Delta\dot{V}O_2$), rather than $\dot{V}O_{2\max}$, was found to be the strongest determinant of the R_{lim} . This result is in agreement with a previous study by Harris et al., [30] who investigated the time course of phosphocreatine (PCr) re-synthesis in a group of adults undergoing a maximal test performed using a cycle ergometer. These authors observed that muscle recovery kinetics after exhaustive maximal exercise was biphasic with the alactacid component ranging from 10 s to a few minutes and the lactacid component lasting a few minutes to hours [31, 32]. The alactacid component consists of oxygen-dependent adenosine triphosphate (ATP) replenished with PCr, which is the primary energy replenishment pathway during HIIT. Participants with faster ATP/PCr replenishment have more rapid $\dot{V}O_2$ recovery within the first minutes after dynamic exhaustive exercise and thereby have a broader $\dot{V}O_2$ reserve for the next HIIT repetition. As evidenced by our statistical model, these individuals are characterized by the presence of high R_{lim} .

The second parameter that appears to determine the performance capacity during HIIT is the HR recovery ($\Delta\text{HR}2/$). This reflects the regulatory capability of cardiac autonomic nervous systems [33]. Previous studies showed that HR recovery is related to $\dot{V}O_{2\max}$ [34–36] and training status [37, 38]. The present study further found that it is also related to performance in HIIT. During HIIT, faster HR recovery suggests the presence of a broader HR reserve for the next repetition. This highlights the role of cardiac autonomic nervous system regulation in determining HIIT performance.

Besides the recovery rate for $\dot{V}O_2$ and HR, TSI_{INC} was found to be the third significant parameter to explain the variance in R_{lim} among the study participants. Tissue saturation index represents a balance between muscular oxygen delivery and consumption [39, 40]. Increase in TSI accompanied by an increase in mitochondrial biogenesis, capillarization, and mitochondrial enzyme activity, have been shown after HIIT training [41–43]. It is likely that participants who reached a lower TSI_{INC} at the end of the INC protocol had higher peripheral muscular metabolic acidosis tolerance and, thus, a greater capacity to sustain HIIT efforts, resulting in higher R_{lim} .

In addition, R_{lim} and age showed a strong relationship among the young-adult participants that volunteered to take part in this study (age range: 15–28 years). This finding seems to suggest that the capacity to sustain long HIIT durations is related to the maturity (age) of the individual undergoing the test. Ratel et al. [44] compared the recovery capacity of prepubescent boys ($n = 11$; age, 9.6 ± 0.7 years), pubescent boys ($n = 9$; age, 15 ± 0.7 years), and adult men ($n = 10$; age, 20.4 ± 0.8 years) using a ten-repetition intermittent sprinting cycling test (friction load = 50% optimal force), separated by 30-s, 1-min, and 5-min passive recovery durations. The capacity of maintaining peak cycling power from the first to the 10th set decreased ($p < 0.01$) by 11.3% in adult men, 15.3% in pubescent boys, and no changes were noted in the prepubescent group, when the recovery interval was 1 min (the same duration applied in the current study for the HIIT test). Their findings [44] suggest that for the pubescent and adult categories, a longer recovery time was needed due to higher muscle glycolytic activity and slower PCr re-synthesis. Similarly, in a study by Zafeiridis et al. [45], the effect of age was investigated with respect to the capacity of recovery after high-intensity intermittent isokinetic strength exercises. Groups of boys (age, 11.4 ± 0.5 years), teens (age, 14.7 ± 0.4 years), and men

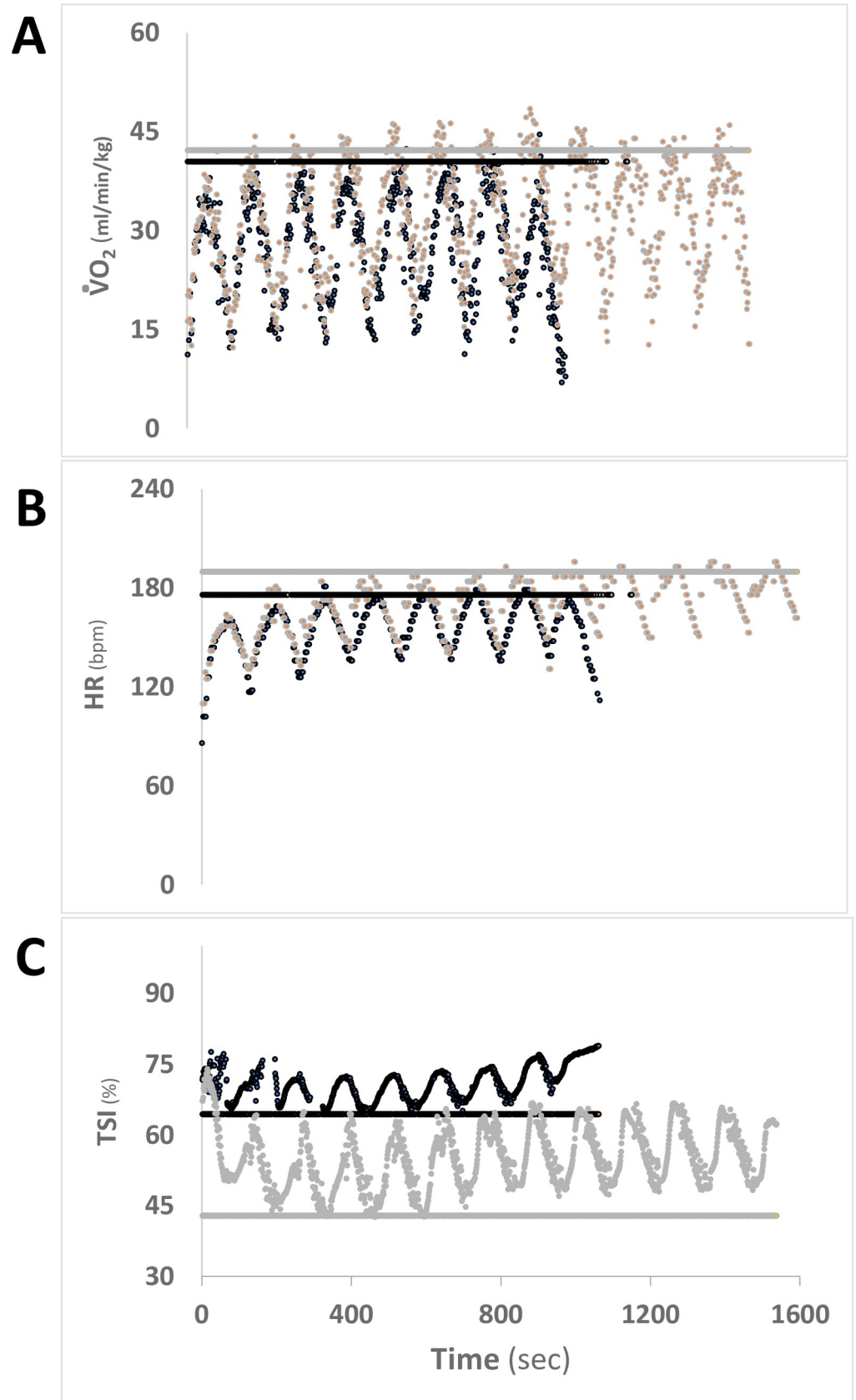


Fig 4. HIIT physiological responses from two representative participants are reported for: $\Delta\dot{V}O_2$ (Panel A), HR (Panel B), and TSI (Panel C). Example of a participant able to complete a higher number of HIIT repetitions (in grey); dark traces represent a subject with lower tolerance to HIIT. Horizontal continuous lines represent the maximal values for the respective physiological parameters reached at the end of the INC test. HIIT: high-intensity interval testing, INC: maximal incremental exercise test, $\dot{V}O_2$: oxygen consumption, TSI_{INC}: nadir of tissue saturation index during INC.

<https://doi.org/10.1371/journal.pone.0226313.g004>

(age, 24.1 ± 2 years) were enrolled and each group performed two sets of exercises of 30-s and 60-s bout durations, separated by 1- and 2-min rest periods, respectively. The results showed that the teens tended to recover faster than men, suggesting that the rate of recovery for both types of tasks was age related. Accordingly, the recovery capacity from anaerobic performance decreases with age, with the decline starting as early as 9 to 11 years. Age-related exercise capacity decline is multi-factorial, involving elements such as decrease in intramuscular PCr and intramuscular creatine kinase concentrations, rates of PCr hydrolysis, and glycolytic enzymatic activities as well as changes in muscle architecture and speed of neural activation [31, 46–50]. Moreover, younger adolescents rely less on anaerobic glycolysis and more on aerobic metabolism than older adolescents [51, 52]. Consequently, the former are likely to experience less fatigue and recover more quickly than the latter in HIIT testing. However, due to the wide age range and exercise types (aerobic or anaerobic) [53–55], the mechanisms underlying the age-related decline in anaerobic performance from teens to young adults remains unclear.

The parameters of HR, $\dot{V}O_2$ recovery, and TSI at the end of INC showed an explanatory power of 0.415 (Model 3, Table 1). This suggests that additional factors should be considered to explain the variance in R_{lim} seen in our cohort. One plausible factor might be the participants' motivation and compliance. As recently reported by Noakes et al. [56, 57], although aerobic fitness and the central nervous system play major roles, athletes' biological condition at the exercise onset (e.g. emotional state like motivational self-belief; mental and physical fatigue) affects in part the performance of an individual.

Limitations

This study has a few limitations. First, our findings might apply to HIIT protocols similar to the one used in this study, but they might not be consistent for other HIIT protocols where a different work/recovery format (e.g., repetition duration, intensity) is set or if the tolerance is evaluated with field-type tests.

Second, it could seem rather surprising that the values of HR and $\dot{V}O_2$ during the second minute of recovery after INC (i.e., $\Delta\dot{V}O_2/2$, $\Delta HR/2$) showed a stronger correlation with R_{lim} than those measured immediately after the end of the same test (i.e., at 30 and 60 seconds). These findings can be partially explained by the difference existing between active and passive recovery. During the recovery phase, all participants were instructed to walk at their own comfortable speed at 0% grade for 1 min (active recovery) and to stand still for an additional 2 min (passive recovery). However, the HRs decreased less in active recovery than in passive recovery, where the latter has a lower central command from the motor cortex and muscle mechano-metabo receptor activity from skeletal muscle contractions [58]. The recovery $\dot{V}O_2$ is also higher in active than in passive recovery [59]. The competition for oxygen between PCr replenishment and muscle activity during active recovery produces a higher $\dot{V}O_2$ [60, 61]. In the first minute of active recovery, the recovery kinetics were not comparable among the participants.

Thirdly, limitations exist in the use of NIRS methodology in estimating muscle metabolism. High melanin content and large adipose tissue thickness (ATT) can cause signal attenuation,

reducing the amount of light reaching the muscle tissue under investigation. Nevertheless, low melanin content (all the participants were of Asian ethnicity) and an average ATT below 1.6–1.8 mm for the whole cohort, confirmed the reliability of our NIRS data [62].

Furthermore, the participants included in our study were all female. Although only a few studies in the literature have included a similar large number of women as in this study, the influence of sex on the results of our analyses deserves further investigation. While menstrual cycles and oral contraceptives were not controlled or documented at the time of testing, evidence is available showing that neither hormonal fluctuations between the menstrual cycles nor low-dose oral contraceptives used by athletes today have detectable effects on maximal exercise performance [63].

Finally, for this study, the intensity of HIIT exercises was calculated as a fixed percentage of the highest speed reached at the end of the INC test. The use of an INC-derived fixed percentage to calculate the HIIT work rate should be considered another determinant of the variability in R_{lim} results in this context. In 2019, Iannetta et al. [64] reported that when work rates are set as fixed-percentage of parameters measured at maximal exercise capacity, given the between-subjects variability in percentages defining the intensity of an exercise domain (i.e., moderate, heavy, severe, extreme [65]), an increased variance in metabolic stimulus/response is expected. In our study, this correlates to metabolic stress and unequal relative work seen in the HIIT participants' responses (e.g., oxygen uptake ranged between 82–91% and 95.4–112% of the individual $\dot{V}O_{2max}$ during the first and following HIIT repetitions, respectively; Fig 4A). To ensure accurate control of exercise intensity among participants and reduce errors in comparisons, future studies on the physiological response at specific exercise intensity domains should adopt methodological approaches that consider individual physiological thresholds and exercise-intensity domain models as those proposed by Iannetta and colleagues [64].

Conclusion

The capacity to sustain a HIIT exercise, determined by the number of repetitions completed before exhaustion (i.e., R_{lim}) differs greatly among young-adult female athletes. The recovery rates of $\dot{V}O_2$ and HR after incremental testing and peripheral muscle saturation levels at exhaustion in INC are the major physiological factors related to R_{lim} . Moreover, age represents an additional R_{lim} -influencing factor.

These findings provide insights into the importance of the recovery phase after maximal INC exercise testing. The values derived from the recovery phase specifically predict HIIT performance and possibly predict sport performance where repeated high-intensity efforts are required. Based on our findings, future research on using a combination of INC and HIIT testing to determine the performance improvement of athletes after HIIT training is warranted.

Supporting information

S1 Table. Pearson correlation coefficients between B_{lim} and cardio-respiratory variables derived from INC for the whole group of participants.

(DOCX)

Acknowledgments

The authors thank all participants for their time and dedication in completing the experimental protocol.

Author Contributions

Conceptualization: Alessandra Adami, Yin-Chou Lin, Chih-Chin Hsu, Shu-Chun Huang.

Data curation: Shih-Chieh Chang, Hsin-Chin Lin, Carl P. C. Chen, Chih-Chin Hsu, Shu-Chun Huang.

Formal analysis: Shih-Chieh Chang, Hsin-Chin Lin, Yin-Chou Lin, Carl P. C. Chen, Chih-Chin Hsu, Shu-Chun Huang.

Funding acquisition: Chih-Chin Hsu, Shu-Chun Huang.

Investigation: Yin-Chou Lin, Tieh-Cheng Fu, Shu-Chun Huang.

Methodology: Tieh-Cheng Fu, Shu-Chun Huang.

Project administration: Shu-Chun Huang.

Resources: Yin-Chou Lin, Carl P. C. Chen, Shu-Chun Huang.

Software: Shu-Chun Huang.

Supervision: Chih-Chin Hsu, Shu-Chun Huang.

Validation: Alessandra Adami, Shu-Chun Huang.

Visualization: Shu-Chun Huang.

Writing – original draft: Shih-Chieh Chang, Hsin-Chin Lin, Shu-Chun Huang.

Writing – review & editing: Alessandra Adami, Shu-Chun Huang.

References

1. Arena R, Sietsema KE. Cardiopulmonary exercise testing in the clinical evaluation of patients with heart and lung disease. *Circulation*. 2011; 123(6):668–80. Epub 2011/02/16. <https://doi.org/10.1161/CIRCULATIONAHA.109.914788> PMID: 21321183.
2. Balady GJ, Arena R, Sietsema K, Myers J, Coke L, Fletcher GF, et al. Clinician's Guide to cardiopulmonary exercise testing in adults: a scientific statement from the American Heart Association. *Circulation*. 2010; 122(2):191–225. Epub 2010/06/30. <https://doi.org/10.1161/CIR.0b013e3181e52e69> PMID: 20585013.
3. Day JR, Rossiter HB, Coats EM, Skasick A, Whipp BJ. The maximally attainable VO₂ during exercise in humans: the peak vs. maximum issue. *Journal of applied physiology* (Bethesda, Md: 1985). 2003; 95(5):1901–7. Epub 2003/07/15. <https://doi.org/10.1152/jappphysiol.00024.2003> PMID: 12857763.
4. Beltz NM, Gibson AL, Janot JM, Kravitz L, Mermier CM, Dalleck LC. Graded Exercise Testing Protocols for the Determination of VO₂max: Historical Perspectives, Progress, and Future Considerations. *J Sports Med (Hindawi Publ Corp)*. 2016; 2016:3968393. Epub 2017/01/25. <https://doi.org/10.1155/2016/3968393> PMID: 28116349; PubMed Central PMCID: PMC5221270.
5. Taylor HL, Buskirk E, Henschel A. Maximal oxygen intake as an objective measure of cardio-respiratory performance. *J Appl Physiol*. 1955; 8(1):73–80. Epub 1955/07/01. <https://doi.org/10.1152/jappl.1955.8.1.73> PMID: 13242493.
6. Muscat KM, Kotrach HG, Wilkinson-Maitland CA, Schaeffer MR, Mendonca CT, Jensen D. Physiological and perceptual responses to incremental exercise testing in healthy men: effect of exercise test modality. *Appl Physiol Nutr Metab*. 2015; 40(11):1199–209. Epub 2015/10/27. <https://doi.org/10.1139/apnm-2015-0179> PMID: 26501683.
7. Dolci F, Kilding AE, Chivers P, Piggott B, Hart NH. High-Intensity Interval Training Shock Microcycle for Enhancing Sport Performance: A Brief Review. *Journal of strength and conditioning research*. 2020. Epub 2020/01/07. <https://doi.org/10.1519/jsc.0000000000003499> PMID: 31904712.
8. Gibala MJ, Little JP, Macdonald MJ, Hawley JA. Physiological adaptations to low-volume, high-intensity interval training in health and disease. *J Physiol*. 2012; 590(5):1077–84. Epub 2012/02/01. <https://doi.org/10.1113/jphysiol.2011.224725> PMID: 22289907; PubMed Central PMCID: PMC3381816.

9. Gibala MJ, McGee SL. Metabolic adaptations to short-term high-intensity interval training: a little pain for a lot of gain? *Exerc Sport Sci Rev.* 2008; 36(2):58–63. Epub 2008/03/26. <https://doi.org/10.1097/JES.0b013e318168ec1f> PMID: 18362686.
10. Tabata I, Irisawa K, Kouzaki M, Nishimura K, Ogita F, Miyachi M. Metabolic profile of high intensity intermittent exercises. *Medicine and science in sports and exercise.* 1997; 29(3):390–5. Epub 1997/03/01. <https://doi.org/10.1097/00005768-199703000-00015> PMID: 9139179.
11. Huang SC, Wong MK, Lin PJ, Tsai FC, Fu TC, Wen MS, et al. Modified high-intensity interval training increases peak cardiac power output in patients with heart failure. *European journal of applied physiology.* 2014; 114(9):1853–62. Epub 2014/06/02. <https://doi.org/10.1007/s00421-014-2913-y> PMID: 24880226.
12. Bacon AP, Carter RE, Ogle EA, Joyner MJ. VO₂max trainability and high intensity interval training in humans: a meta-analysis. *PLoS One.* 2013; 8(9):e73182. Epub 2013/09/26. <https://doi.org/10.1371/journal.pone.0073182> PMID: 24066036; PubMed Central PMCID: PMC3774727.
13. Jones AM, Vanhatalo A. The 'Critical Power' Concept: Applications to Sports Performance with a Focus on Intermittent High-Intensity Exercise. *Sports medicine (Auckland, NZ).* 2017; 47(Suppl 1):65–78. Epub 2017/03/24. <https://doi.org/10.1007/s40279-017-0688-0> PMID: 28332113; PubMed Central PMCID: PMC5371646.
14. Kavaliuskas M, Steer TP, Babraj JA. Cardiorespiratory fitness and aerobic performance adaptations to a 4-week sprint interval training in young healthy untrained females. *Sport sciences for health.* 2017; 13(1):17–23. Epub 2017/05/10. <https://doi.org/10.1007/s11332-016-0313-x> PMID: 28479931; PubMed Central PMCID: PMC5397461.
15. Christensen PM, Krstrup P, Gunnarsson TP, Kiilerich K, Nybo L, Bangsbo J. VO₂ kinetics and performance in soccer players after intense training and inactivity. *Medicine and science in sports and exercise.* 2011; 43(9):1716–24. Epub 2011/02/12. <https://doi.org/10.1249/MSS.0b013e318211c01a> PMID: 21311360.
16. Fernandez-Fernandez J, Sanz-Rivas D, Sarabia JM, Moya M. Preseason Training: The Effects of a 17-Day High-Intensity Shock Microcycle in Elite Tennis Players. *J Sports Sci Med.* 2015; 14(4):783–91. Epub 2015/12/15. PMID: 26664275; PubMed Central PMCID: PMC4657421.
17. Paul DJ, Marques JB, Nassis GP. The effect of a concentrated period of soccer-specific fitness training with small-sided games on physical fitness in youth players. *J Sports Med Phys Fitness.* 2019; 59(6):962–8. Epub 2018/06/29. <https://doi.org/10.23736/S0022-4707.18.08547-X> PMID: 29952179.
18. Wahl P, Guldner M, Mester J. Effects and sustainability of a 13-day high-intensity shock microcycle in soccer. *J Sports Sci Med.* 2014; 13(2):259–65. Epub 2014/05/03. PMID: 24790477; PubMed Central PMCID: PMC3990877.
19. Bull FC, Maslin TS, Armstrong T. Global physical activity questionnaire (GPAQ): nine country reliability and validity study. *Journal of physical activity & health.* 2009; 6(6):790–804. Epub 2010/01/28. <https://doi.org/10.1123/jpah.6.6.790> PMID: 20101923.
20. Murakami K, Hirano H, Watanabe Y, Edahiro A, Ohara Y, Yoshida H, et al. Relationship between swallowing function and the skeletal muscle mass of older adults requiring long-term care. *Geriatrics & gerontology international.* 2015; 15(10):1185–92. Epub 2015/08/15. <https://doi.org/10.1111/ggi.12572> PMID: 26272767.
21. Morishita Y, Kubo K, Haga Y, Miki A, Ishibashi K, Kusano E, et al. Skeletal muscle loss is negatively associated with single-pool Kt/V and dialysis duration in hemodialysis patients. *Therapeutic apheresis and dialysis: official peer-reviewed journal of the International Society for Apheresis, the Japanese Society for Apheresis, the Japanese Society for Dialysis Therapy.* 2014; 18(6):612–7. Epub 2014/03/29. <https://doi.org/10.1111/1744-9987.12174> PMID: 24674153.
22. Morishita Y, Kubo K, Miki A, Ishibashi K, Kusano E, Nagata D. Positive association of vigorous and moderate physical activity volumes with skeletal muscle mass but not bone density or metabolism markers in hemodialysis patients. *International urology and nephrology.* 2014; 46(3):633–9. Epub 2014/02/15. <https://doi.org/10.1007/s11255-014-0662-9> PMID: 24526334.
23. Ferrari M, Mottola L, Quaresima V. Principles, techniques, and limitations of near infrared spectroscopy. *Canadian journal of applied physiology = Revue canadienne de physiologie appliquee.* 2004; 29(4):463–87. Epub 2004/08/27. <https://doi.org/10.1139/h04-031> PMID: 15328595.
24. Sperlich PF, Holmberg HC, Reed JL, Zinner C, Mester J, Sperlich B. Individual versus Standardized Running Protocols in the Determination of VO₂max. *J Sports Sci Med.* 2015; 14(2):386–93. Epub 2015/05/20. PMID: 25983589; PubMed Central PMCID: PMC4424469.
25. Astrand I. Aerobic work capacity in men and women with special reference to age. *Acta Physiol Scand Suppl.* 1960; 49(169):1–92. Epub 1960/01/01. PMID: 13794892.

26. Adami A, Sivieri A, Moia C, Perini R, Ferretti G. Effects of step duration in incremental ramp protocols on peak power and maximal oxygen consumption. *European journal of applied physiology*. 2013; 113(10):2647–53. Epub 2013/08/21. <https://doi.org/10.1007/s00421-013-2705-9> PMID: 23949790.
27. Connes P, Hue O, Perrey S. *Exercise physiology: From a cellular to an integrative approach*: IOS Press; 2010.
28. Lador F, Tam E, Adami A, Kenfack MA, Bringard A, Cautero M, et al. Cardiac output, O₂ delivery and VO₂ kinetics during step exercise in acute normobaric hypoxia. *Respir Physiol Neurobiol*. 2013; 186(2):206–13. Epub 2013/02/19. <https://doi.org/10.1016/j.resp.2013.01.017> PMID: 23416403.
29. Turner AP, Cathcart AJ, Parker ME, Butterworth C, Wilson J, Ward SA. Oxygen uptake and muscle desaturation kinetics during intermittent cycling. *Medicine and science in sports and exercise*. 2006; 38(3):492–503. Epub 2006/03/17. <https://doi.org/10.1249/01.mss.0000188450.82733.f0> PMID: 16540837.
30. Harris RC, Edwards RH, Hultman E, Nordesjo LO, Ny Lind B, Sahlin K. The time course of phosphoryl-creatine resynthesis during recovery of the quadriceps muscle in man. *Pflugers Archiv: European journal of physiology*. 1976; 367(2):137–42. Epub 1976/12/28. <https://doi.org/10.1007/BF00585149> PMID: 1034909.
31. Tomlin DL, Wenger HA. The relationship between aerobic fitness and recovery from high intensity intermittent exercise. *Sports medicine (Auckland, NZ)*. 2001; 31(1):1–11. Epub 2001/02/24. <https://doi.org/10.2165/00007256-200131010-00001> PMID: 11219498.
32. Borsheim E, Bahr R. Effect of exercise intensity, duration and mode on post-exercise oxygen consumption. *Sports medicine (Auckland, NZ)*. 2003; 33(14):1037–60. Epub 2003/11/06. <https://doi.org/10.2165/00007256-200333140-00002> PMID: 14599232.
33. Pierpont GL, Voith EJ. Assessing autonomic function by analysis of heart rate recovery from exercise in healthy subjects. *The American journal of cardiology*. 2004; 94(1):64–8. Epub 2004/06/29. <https://doi.org/10.1016/j.amjcard.2004.03.032> PMID: 15219511.
34. Cole CR, Blackstone EH, Pashkow FJ, Snader CE, Lauer MS. Heart-rate recovery immediately after exercise as a predictor of mortality. *The New England journal of medicine*. 1999; 341(18):1351–7. Epub 1999/10/28. <https://doi.org/10.1056/NEJM199910283411804> PMID: 10536127.
35. Trevizani GA, Benchimol-Barbosa PR, Nadal J. Effects of age and aerobic fitness on heart rate recovery in adult men. *Arquivos brasileiros de cardiologia*. 2012; 99(3):802–10. Epub 2012/07/28. <https://doi.org/10.1590/s0066-782x2012005000069> PMID: 22836359.
36. Vicente-Campos D, Martin Lopez A, Nunez MJ, Lopez Chicharro J. Heart rate recovery normality data recorded in response to a maximal exercise test in physically active men. *European journal of applied physiology*. 2014; 114(6):1123–8. Epub 2014/02/21. <https://doi.org/10.1007/s00421-014-2847-4> PMID: 24553907.
37. Daanen HA, Lamberts RP, Kallen VL, Jin A, Van Meeteren NL. A systematic review on heart-rate recovery to monitor changes in training status in athletes. *International journal of sports physiology and performance*. 2012; 7(3):251–60. Epub 2012/02/24. <https://doi.org/10.1123/ijsp.7.3.251> PMID: 22357753.
38. Suzic Lazic J, Dekleva M, Soldatovic I, Leischik R, Suzic S, Radovanovic D, et al. Heart rate recovery in elite athletes: the impact of age and exercise capacity. *Clinical physiology and functional imaging*. 2017; 37(2):117–23. Epub 2015/07/07. <https://doi.org/10.1111/cpf.12271> PMID: 26147945.
39. Buchheit M, Ufland P. Effect of endurance training on performance and muscle reoxygenation rate during repeated-sprint running. *European journal of applied physiology*. 2011; 111(2):293–301. Epub 2010/09/28. <https://doi.org/10.1007/s00421-010-1654-9> PMID: 20872150.
40. Boushel R, Langberg H, Olesen J, Gonzales-Alonzo J, Bulow J, Kjaer M. Monitoring tissue oxygen availability with near infrared spectroscopy (NIRS) in health and disease. *Scandinavian journal of medicine & science in sports*. 2001; 11(4):213–22. Epub 2001/07/31. <https://doi.org/10.1034/j.1600-0838.2001.110404.x> PMID: 11476426.
41. Holloszy JO, Coyle EF. Adaptations of skeletal muscle to endurance exercise and their metabolic consequences. *Journal of applied physiology: respiratory, environmental and exercise physiology*. 1984; 56(4):831–8. Epub 1984/04/01. <https://doi.org/10.1152/jappl.1984.56.4.831> PMID: 6373687.
42. Hood DA. Invited Review: contractile activity-induced mitochondrial biogenesis in skeletal muscle. *Journal of applied physiology (Bethesda, Md: 1985)*. 2001; 90(3):1137–57. Epub 2001/02/22. <https://doi.org/10.1152/jappl.2001.90.3.1137> PMID: 11181630.
43. Buchheit M, Abbiss CR, Peiffer JJ, Laursen PB. Performance and physiological responses during a sprint interval training session: relationships with muscle oxygenation and pulmonary oxygen uptake kinetics. *European journal of applied physiology*. 2012; 112(2):767–79. Epub 2011/06/15. <https://doi.org/10.1007/s00421-011-2021-1> PMID: 21667291.

44. Ratel S, Bedu M, Hennegrave A, Dore E, Duche P. Effects of age and recovery duration on peak power output during repeated cycling sprints. *International journal of sports medicine*. 2002; 23(6):397–402. Epub 2002/09/07. <https://doi.org/10.1055/s-2002-33737> PMID: 12215957.
45. Zafeiridis A, Dalamitros A, Dipla K, Manou V, Galanis N, Kellis S. Recovery during high-intensity intermittent anaerobic exercise in boys, teens, and men. *Medicine and science in sports and exercise*. 2005; 37(3):505–12. Epub 2005/03/03. <https://doi.org/10.1249/01.mss.0000155394.76722.01> PMID: 15741851.
46. Reaburn P, Dascombe B. Anaerobic performance in masters athletes. *European Review of Aging and Physical Activity*. 2008; 6(1):39–53. <https://doi.org/10.1007/s11556-008-0041-6>
47. Eriksson BO, Gollnick PD, Saltin B. Muscle metabolism and enzyme activities after training in boys 11–13 years old. *Acta physiologica Scandinavica*. 1973; 87(4):485–97. Epub 1973/04/01. <https://doi.org/10.1111/j.1748-1716.1973.tb05415.x> PMID: 4269332.
48. Kuno S, Takahashi H, Fujimoto K, Akima H, Miyamaru M, Nemoto I, et al. Muscle metabolism during exercise using phosphorus-31 nuclear magnetic resonance spectroscopy in adolescents. *European journal of applied physiology and occupational physiology*. 1995; 70(4):301–4. Epub 1995/01/01. <https://doi.org/10.1007/BF00865026> PMID: 7649140.
49. Taylor DJ, Kemp GJ, Thompson CH, Radda GK. Ageing: effects on oxidative function of skeletal muscle in vivo. *Molecular and cellular biochemistry*. 1997; 174(1–2):321–4. Epub 1997/10/06. PMID: 9309705.
50. Zanconato S, Buchthal S, Barstow TJ, Cooper DM. 31P-magnetic resonance spectroscopy of leg muscle metabolism during exercise in children and adults. *Journal of applied physiology (Bethesda, Md: 1985)*. 1993; 74(5):2214–8. Epub 1993/05/01. <https://doi.org/10.1152/jappl.1993.74.5.2214> PMID: 8335550.
51. Boisseau N, Delamarche P. Metabolic and hormonal responses to exercise in children and adolescents. *Sports medicine (Auckland, NZ)*. 2000; 30(6):405–22. Epub 2000/12/29. <https://doi.org/10.2165/00007256-200030060-00003> PMID: 11132123.
52. Armstrong N, Barker AR, McManus AM. Muscle metabolism changes with age and maturation: How do they relate to youth sport performance? *British journal of sports medicine*. 2015; 49(13):860–4. Epub 2015/05/06. <https://doi.org/10.1136/bjsports-2014-094491> PMID: 25940635.
53. Baker AB, Tang YQ, Turner MJ. Percentage decline in masters superathlete track and field performance with aging. *Experimental aging research*. 2003; 29(1):47–65. Epub 2003/05/09. <https://doi.org/10.1080/0361073030303706> PMID: 12735081.
54. Benelli P, Ditroilo M, Forte R, De Vito G, Stocchi V. Assessment of post-competition peak blood lactate in male and female master swimmers aged 40–79 years and its relationship with swimming performance. *European journal of applied physiology*. 2007; 99(6):685–93. Epub 2007/02/06. <https://doi.org/10.1007/s00421-006-0334-2> PMID: 17277939.
55. Fair RC. Estimated age effects in athletic events and chess. *Experimental aging research*. 2007; 33(1):37–57. Epub 2006/11/30. <https://doi.org/10.1080/03610730601006305> PMID: 17132563.
56. Noakes TD. Testing for maximum oxygen consumption has produced a brainless model of human exercise performance. *British journal of sports medicine*. 2008; 42(7):551–5. Epub 2008/04/22. <https://doi.org/10.1136/bjism.2008.046821> PMID: 18424484.
57. Noakes TD. Fatigue is a Brain-Derived Emotion that Regulates the Exercise Behavior to Ensure the Protection of Whole Body Homeostasis. *Front Physiol*. 2012; 3:82. Epub 2012/04/20. <https://doi.org/10.3389/fphys.2012.00082> PMID: 22514538; PubMed Central PMCID: PMC3323922.
58. Crisafulli A, Carta C, Melis F, Tocco F, Frongia F, Santoboni UM, et al. Haemodynamic responses following intermittent supramaximal exercise in athletes. *Experimental physiology*. 2004; 89(6):665–74. Epub 2004/08/26. <https://doi.org/10.1113/expphysiol.2004.027946> PMID: 15328308.
59. Buchheit M, Cormie P, Abbiss CR, Ahmaidi S, Nosaka KK, Laursen PB. Muscle deoxygenation during repeated sprint running: Effect of active vs. passive recovery. *International journal of sports medicine*. 2009; 30(6):418–25. Epub 2009/05/14. <https://doi.org/10.1055/s-0028-1105933> PMID: 19437381.
60. Haseler LJ, Hogan MC, Richardson RS. Skeletal muscle phosphocreatine recovery in exercise-trained humans is dependent on O₂ availability. *Journal of applied physiology (Bethesda, Md: 1985)*. 1999; 86(6):2013–8. Epub 1999/06/16. <https://doi.org/10.1152/jappl.1999.86.6.2013> PMID: 10368368.
61. Dupont G, Blondel N, Berthoin S. Performance for short intermittent runs: active recovery vs. passive recovery. *European journal of applied physiology*. 2003; 89(6):548–54. Epub 2003/05/08. <https://doi.org/10.1007/s00421-003-0834-2> PMID: 12734760.
62. van Beekvelt MC, Borghuis MS, van Engelen BG, Wevers RA, Colier WN. Adipose tissue thickness affects in vivo quantitative near-IR spectroscopy in human skeletal muscle. *Clinical science (London, England: 1979)*. 2001; 101(1):21–8. Epub 2001/06/21. <https://doi.org/10.1042/cs20000247> PMID: 11410110.

63. Mattu AT, Iannetta D, MacInnis MJ, Doyle-Baker PK, Murias JM. Menstrual and oral contraceptive cycle phases do not affect submaximal and maximal exercise responses. *Scandinavian journal of medicine & science in sports*. 2019. Epub 2019/10/31. <https://doi.org/10.1111/sms.13590> PMID: 31663173.
64. Iannetta D, Inglis EC, Mattu AT, Fontana FY, Pogliaghi S, Keir DA, et al. A Critical Evaluation of Current Methods for Exercise Prescription in Women and Men. *Medicine and science in sports and exercise*. 2020; 52(2):466–73. Epub 2019/09/04. <https://doi.org/10.1249/MSS.0000000000002147> PMID: 31479001.
65. Hill DW, Poole DC, Smith JC. The relationship between power and the time to achieve $\dot{V}O_{2max}$. *Medicine and science in sports and exercise*. 2002; 34(4):709–14. Epub 2002/04/05. <https://doi.org/10.1097/00005768-200204000-00023> PMID: 11932583.