



Cite this: DOI: 10.1039/c9cc08362f

Received 25th October 2019,
Accepted 15th November 2019

DOI: 10.1039/c9cc08362f

rsc.li/chemcomm

Use of pyridazinediones as extracellular cleavable linkers through reversible cysteine conjugation†

Calise Bahou,[‡] Richard J. Spears,[‡] Abil E. Aliev,^a Antoine Maruani,^a Marcos Fernandez,^a Faiza Javid,^a Peter A. Szijj,^a James R. Baker^{*,a} and Vijay Chudasama^{*,ab}

Herein we report a retro-Michael deconjugation pathway of thiol-pyridazinedione linked protein bioconjugates to provide a novel cleavable linker technology. We demonstrate that the novel pyridazinedione linker does not suffer from off-target modification with blood thiols (e.g., glutathione, human serum albumin (HSA)), which is in sharp contrast to an analogous maleimide linker.

Site-selective modification of proteins lies at the forefront of contemporary approaches to problem solving in chemical biology.^{1,2} Construction of these protein bioconjugates frequently uses cysteine as a handle for bioconjugation,^{3,4} owing to its favourable properties (high nucleophilicity of the thiol side chain at neutral pH ($pK_a \approx 8$), low natural abundance (<2%) and ease of incorporation *via* site-directed mutagenesis).⁵ In particular, cysteine modification features heavily in the synthesis of antibody–drug conjugates (ADCs), a class of therapeutics that combines the selective targeting capabilities of an antibody with the potent toxicity of small molecule drugs.⁶ Currently, five ADCs are FDA-approved, including Adcetris[™] and Polivy[™] whose payloads are linked directly *via* cysteine bioconjugation.^{7,8} Mechanistically, ADCs operate *via* either internalising or non-internalising pathways depending on whether endocytosis is initiated following antigen binding,⁹ with toxic cargo release dependent on whether a “non-cleavable linker” or “cleavable linker” is used when constructing the ADC.¹⁰ For non-cleavable linkers, drug release occurs following lysosomal degradation of the internalised ADC, whereas for cleavable linkers drug release is facilitated through a stimulus pre- and/or post-internalisation, e.g., triggered by a change in cancer microenvironment conditions.

Historically, many ADCs relied on internalising targets to enable drug release, however, in recent years there has been increasing interest in non-internalising ADCs. These non-internalising ADCs

require extracellular cleavable linkers in order to operate efficiently.¹¹ The two most common types of extracellular cleavable linkers are disulfide based linkers¹² and dipeptide valine–citrulline (Val–Cit) linkers.^{13,14} Disulfide linkers release cargo through disulfide exchange in environments containing high concentrations of thiols.¹² The Val–Cit linker undergoes enzymatic cleavage by cathepsin B, a cysteine protease that is typically overexpressed in cancers;^{11,14} although this protease is usually found in the lysosome it has also displayed extracellular activity in cancers.¹¹ These linkers are not without their disadvantages however; exposed disulfide linkers are susceptible to reduction before the ADC reaches its target.¹⁰ Whilst hindered disulfides have (to some extent) addressed the issue of stability of disulfide linkers in blood they are, to the best of our knowledge, not viable for application as extracellular cleavable linkers, *i.e.*, they only cleave post-internalisation into an intracellular environment.^{15,16} Val–Cit linkers are also susceptible to other protease-related activity, which can hamper their stability in blood plasma.¹⁰ An alternative system explored within the context of cleavable linkers is that of maleimide–thiol linkages (Fig. 1a),^{17,18} which can cleave *via* a retro-Michael pathway and the released maleimide can be trapped by other abundant thiols in the tumour environment. However, the rapid kinetics of maleimide–thiol conjugation makes any released maleimide, before the maleimide–thiol conjugate reaches its desired destination, highly susceptible to off-target thiol modification by other biomolecules *in vivo* (e.g., HSA),¹⁹ thus limiting their use as cleavable systems in a biological context. Furthermore, maleimide–thiol linkages can undergo competitive hydrolysis; terminating the retro-Michael deconjugation pathway and hindering overall cleavage and ultimately cargo release.

Over the past decade, we have reported on the use of bromopyridazinediones (BrPDs) as tools for efficient cysteine bioconjugation, particularly in the synthesis of dually functionalised conjugates, nanoparticle constructs, and therapeutically relevant biomolecules such as ADCs.^{20–22} Unlike maleimides, conjugates synthesised using BrPDs do not undergo ring hydrolysis, and the unsaturated ring scaffold is otherwise stable under aqueous conditions.²³ We were intrigued, however, as to whether bioconjugates containing

^a Department of Chemistry, University College London, 20 Gordon Street, London, WC1H 0AJ, UK. E-mail: v.chudasama@ucl.ac.uk, j.r.baker@ucl.ac.uk

^b Research Institute for Medicines (iMed.U LISBOA), Faculty of Pharmacy, Universidade de Lisboa, 1649-004 Lisbon, Portugal

† Electronic supplementary information (ESI) available: [DETAILS]. See DOI: 10.1039/c9cc08362f

‡ These authors contributed equally to this article.



Communication

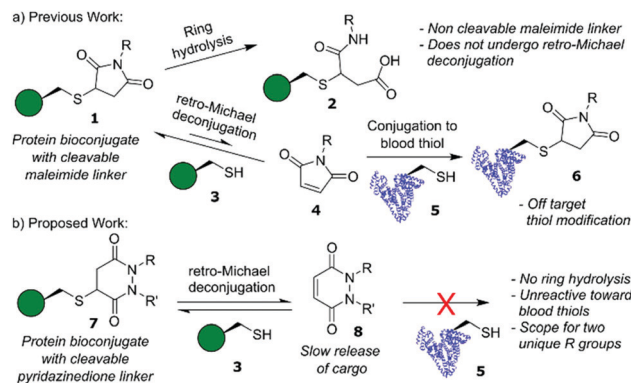


Fig. 1 (a) Competing reactions of cysteine–maleimide conjugates including reversible retro-Michael deconjugation and irreversible hydrolysis of the succinimide motif. (b) Proposed reaction for cysteine–pyridazinedione conjugates involving retro-Michael deconjugation only.

a saturated pyridazinedione scaffold (synthesised as previously described)²³ could proceed down a similar reversible retro-Michael deconjugation pathway displayed by classical maleimides and other Michael acceptors, *e.g.*, cyanoacrylates.²⁴ In the context of a novel cleavable linker, we hypothesised that if Michael addition is observed with PDs the lack of ring hydrolysis would avoid termination of the retro-Michael pathway as seen in maleimide conjugates. Moreover, a different reactivity profile for conjugation and retro-Michael on PDs (compared to other acceptors) could also provide novel opportunities, *e.g.*, a dynamic system with a slow release of PDs that do not react with blood thiols would be a useful addition to the extracellular non-internalising ADC linker toolbox.

Our initial assessment of PDs as a platform for reversible cysteine modification began with the synthesis of small molecule Boc-Cys(PD)-OMe **9** (from Boc-Cys-OMe **10** and PD **11**) to act as a model system for our studies (Fig. 2a). We noted that, compared to the 5-membered ring of the thioether succinimide motif obtained from classical maleimide–thiol conjugates, PD–thiol conjugates comprise a 6-membered ring that may allow for more conformational freedom along the $-\text{CH}_2-\text{CH}(\text{SR})-$ backbone of the ring, giving rise to two possible “pseudoaxial” and “pseudoequatorial” conformers. Using molecular mechanics calculations of Boc-Cys(PD)-OMe **9**, applying the MMX force field²⁵ to find the optimised geometries of the potential pseudoaxial/pseudoequatorial conformers, we experimentally determined conformer ratio in a phosphate buffer (PB) pH 7.4 : CD_3CN (7 : 3) solvent system at 37 °C by ^1H NMR (see ESI†).^{26,27} We found that the PD ring of Boc-Cys(PD)-OMe **9** adopts both conformers, but with the pseudoaxial conformer, which we assume is more likely to be prone to eventual elimination, dominating the equilibrium (3 : 1 ratio of pseudoaxial : pseudoequatorial) (Fig. 2b). With small molecule Boc-Cys(PD)-OMe **9** in-hand, we next monitored the potential deconjugation of the PD by ^1H NMR at 24 h intervals over the course of 96 h. New peaks in the ^1H NMR corresponding to deconjugated PD **11** emerged, with integrations of the newly appearing PD **11** CH protons suggesting gradual PD liberation from the conjugate over time (Fig. 2c). To further confirm that deconjugation was taking place, we next performed an Ellman’s test to establish the presence of free thiol generated from deconjugation of conjugate **9**. Boc-Cys(PD)-OMe **9**

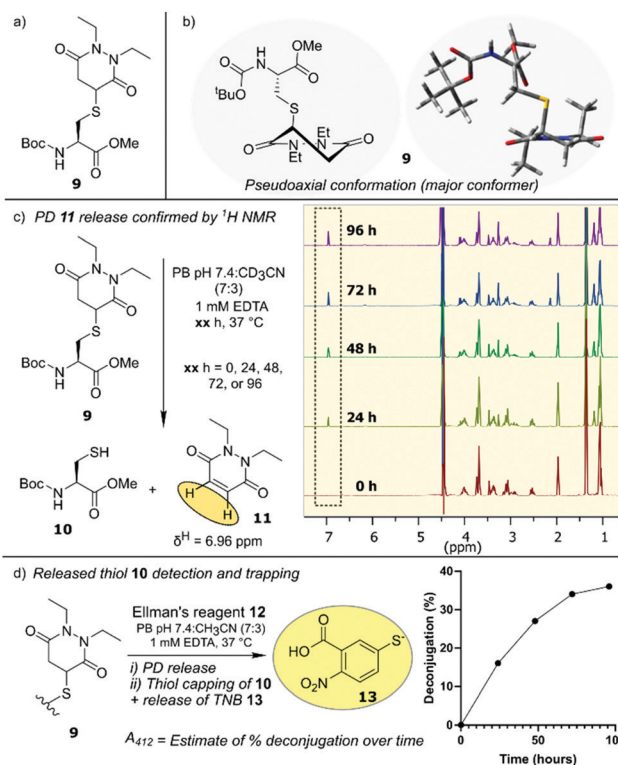


Fig. 2 (a) Structure of Boc-Cys(PD)-OMe **9**. (b) Structural representation of pseudoaxial conformation of Boc-Cys(PD)-OMe **9**. (c) NMR analysis showing slow release of PD from Boc-Cys(PD)-OMe **9** to form diethyl PD **11** and Boc-Cys-OMe **10**. (d) Schematic of TNB **13** release from reaction with **9** and DTNB **12** with graph depicting calculated % deconjugation.

was incubated with DTNB (Ellman’s reagent) **12**, and anticipated TNB **13** release (from reaction of liberated Boc-Cys-OMe **10** with DTNB **12**) was monitored by UV-Vis absorption at 412 nm at 24 h intervals over the course of 96 h (Fig. 2d). Over this time course, we noted a 36% increase in the amount of deconjugated species determined from absorbance at 412 nm when DTNB **12** was incubated with conjugate **9**, compared to a control experiment (Fig. 2d, see ESI† for details). These experiments confirmed the presence of a retro-Michael deconjugation pathway being effective on a thiolated PD.

Next, we turned our attention towards the reversibility of PDs within the context of protein bioconjugates, utilising a mutant green fluorescent protein containing a solvent-accessible free cysteine as a model system (GFPS147C **14**, expressed as described previously).²⁸ Additionally, we also used a therapeutically relevant antibody Fab **15** (Fab, produced through digestion of the corresponding full antibody). Following reduction with tris(2-carboxyethyl)phosphine (TCEP, see ESI† the GFP single cysteine formed a dimer spontaneously in storage so reduction was required) GFPS147C **14** and an antibody Fab **15** were fully modified with model PD **11** as judged by LC-MS to give GFP-PD **16** and Fab-PD **17** respectively (Fig. 3a-ii, Fab-PD **17** retained binding by ELISA – see ESI†). As a comparative model, GFPS147C **14** and Fab fragment **15** were also modified with a slowly hydrolysing *N*-methyl maleimide **23** to give GFP–maleimide **18** and Fab–maleimide **19** conjugates (Fig. 3a-iii).²⁹ These bioconjugates were then subjected to a seven-day incubation period in buffer representing physiological conditions (pH 7.4, 37 °C, no EDTA), and



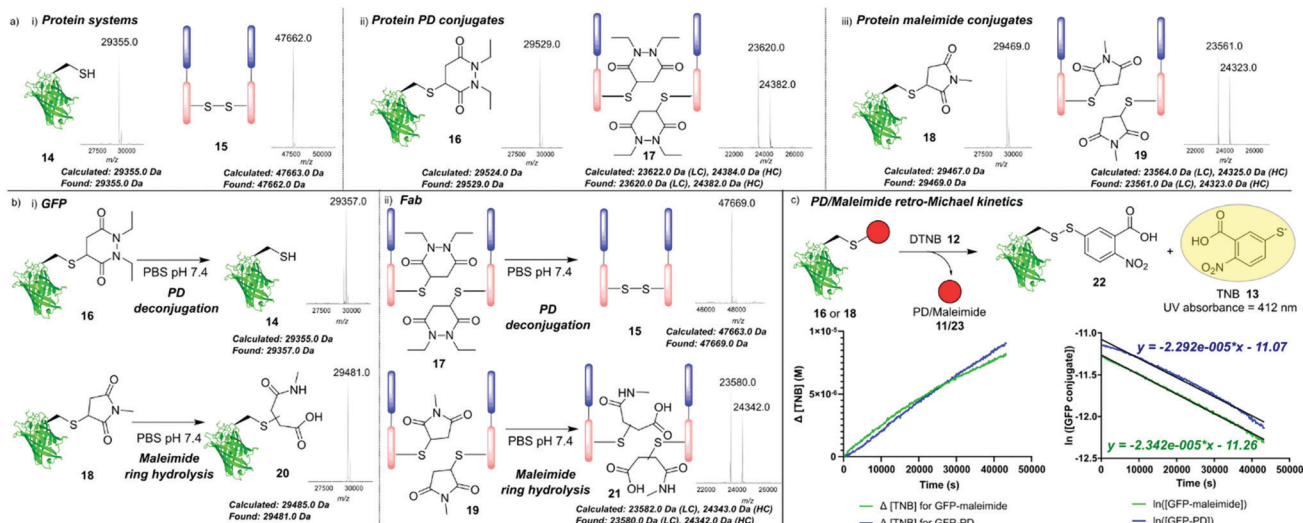


Fig. 3 (a) Mass spectrometry data showing (i) GFPS147C **14** and model Fab fragment **15**; (ii) GFP–PD species **16** and Fab–PD species **17**; (iii) GFP–maleimide species **18** and Fab–maleimide species **19**; (b) mass spectrometry analysis of (i) incubation of GFP conjugates **16** and **18** (50 μM) in PBS pH 7.4 for 7 days at 37 °C; (ii) incubation of Fab conjugates **17** and **19** (20 μM) in PBS pH 7.4 for 7 days at 37 °C. (c) Kinetic analysis of reaction between GFP conjugates (**16** and **18**) and DTNB **12** in PBS pH 7.4 for 12 h at 37 °C to form TNB **13** that was monitored by UV absorbance at A_{412} . Plots show changing [TNB] and ln[GFP conjugate] vs. time.

deconjugation/ring hydrolysis of the conjugates was monitored by LC-MS analysis (Fig. 3b).

Significant release of the PD species from both GFP–PD **16** and Fab–PD **17** was noted, yielding GFPS147C **14** and reoxidised Fab **15** respectively with no conjugates bearing ring hydrolysis observed. In sharp contrast, GFP–maleimide **18** and Fab–maleimide **19** afforded only the succinamic acid species **21** under the same conditions; succinamic acids have previously been shown to be stable to retro-Michael deconjugation.³⁰ GFP and Fab conjugates **16–19** were also subjected to incubation with a model monoBr PD species, which would theoretically form an irreversible unsaturated GFP–PD species/Fab–PD species that would act as a “trap” for any available cysteine liberated from a retro-Michael pathway (see ESI[†]). For the GFP–PD **16** and Fab–PD **17**, a newly formed unsaturated GFP–PD conjugate and Fab–PD conjugate was obtained, with LC-MS analysis indicating near-full release of the original PD cargo (see ESI[†]). In contrast, incubation of monoBr PD with GFP–maleimide **18** and Fab–maleimide **19** showed minor formation of unsaturated GFP–PD species and Fab–PD species with a significant amount of maleimide hydrolysis observed (see ESI[†]). These results confirm that both Michael acceptors (nonBr PDs and maleimides) exist in an equilibrium between conjugation and retro-Michael deconjugation. It also highlights the competing hydrolysis pathway when using maleimide conjugates in this context. We next investigated the comparative rates of retro-Michael deconjugation PDs and maleimides. GFP conjugates **16** and **18** were incubated with excess DTNB **12** at 37 °C, with any liberated cysteine anticipated to react quantitatively to form TNB **13**, giving a characteristic absorbance at 412 nm which could be used to determine PD/maleimide deconjugation (Fig. 3c and ESI[†]). Approximate rate constants for the pseudo first order retro-Michael deconjugation reactions were found to be $2.34 \times 10^{-5} \text{ s}^{-1}$ for the GFP–maleimide species **18** and $2.29 \times 10^{-5} \text{ s}^{-1}$ for the GFP–PD species **16**, suggesting no significant difference between the rate of deconjugation. By comparing retro-Michael deconjugation rates with

deconjugation seen by LC-MS, we can infer that the difference in equilibrium shift between maleimides and PDs is likely a consequence of the vastly different rates of Michael addition presented by these two motifs, *i.e.*, maleimide and PD scaffolds are releasing at a similar rate but maleimides immediately react with the released cysteine.

In view of the relatively slow release of PD from the protein conjugates, we thought that it could be exploited as a novel extracellular cleavable linker for use in protein conjugates where the tumour targeting protein carrier is non-internalising (*e.g.*, an alternative to conventional non-internalising ADC cleavable linkers such as disulfide and Val–Cit as discussed in the introduction). Whilst maleimide conjugates have been explored in this context (*i.e.*, as a reversible cleavable linker),³¹ the PD conjugate does not undergo hydrolysis and the low reactivity of unsaturated PDs with protein thiols would ideally result in any prematurely released cargo (if any) being rapidly cleared from the body as a small molecule.

To this end, Fab–PD conjugate **17** was incubated with common blood thiols glutathione (5 μM, 4 h) and HSA 5 (20 μM, 48 h). An antibody Fab fragment was seen as a relevant model for these studies as various antibodies and antibody fragments have found application as non-internalising ADCs.^{32,33} To our delight, no transfer of PD to HSA 5 was observed (Fig. 4a) and addition of excess glutathione did not accelerate PD release (see ESI[†]). In sharp contrast, when Fab–maleimide conjugate **19** was subjected to HSA incubation conditions, significant amounts of HSA–maleimide species **24** was observed; confirming previous reports of blood instability of maleimide conjugates (Fig. 4b).¹⁹ Furthermore, incubation of each of HSA 5 (50 μM) and glutathione (500 μM) with diethyl PD **11** (2.5 mM and 500 μM, respectively) for 24 h at pH 7.4 to appraise whether any reaction occurred, even under these forcing conditions, led to no observed reaction in either case (see ESI[†]). Finally, we wanted to assess the applicability of the PD conjugate as an extracellular cleavable linker, in a partially acidic environment such as that of a tumour (*ca.* pH 6.5).³⁴ Fab–PD species **17** was incubated under buffered conditions at pH 6.5



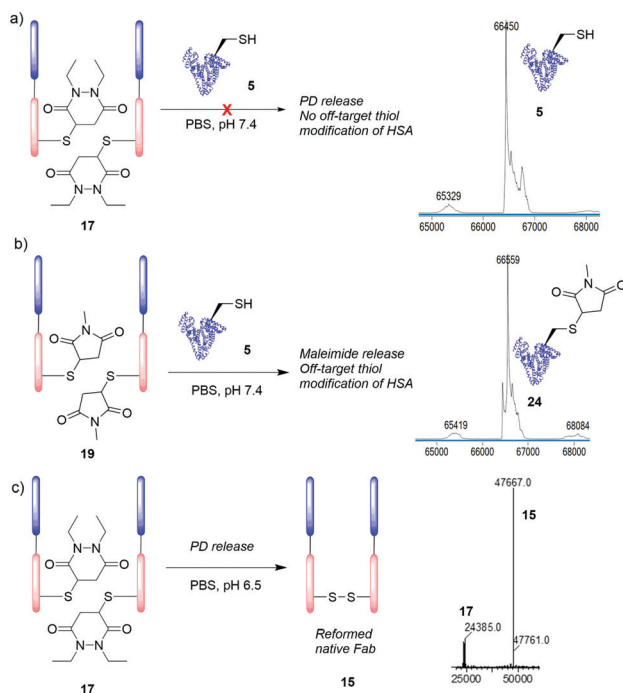


Fig. 4 Incubation of Fab–PD conjugate **17** (20 μ M) with (a) HSA **5** (20 μ M) for 48 h. (b) Incubation of Fab–maleimide species **19** (20 μ M) with HSA **5** (20 μ M) for 48 h. (c) Incubation of Fab–PD conjugate **17** (20 μ M) at pH 6.5 for 7 days.

for 7 days. Despite acidic conditions slowing down the rate of Michael deconjugation, the majority of the PD was still released from the conjugate (Fig. 4c). We would therefore expect that PD cleavage would occur in the extracellular environment (following antigen binding) resulting in a high local concentration of PD-linked payload that may then diffuse into target cells. By using PDs in conjunction with linkers designed for intracellular triggered release (e.g., Val–Cit, hindered disulfides), efficient delivery of cargo using non-internalising targeting proteins could be achieved. Furthermore, combining a predictable time-dependent release mechanism in a tumour environment with a high tolerance towards HSA may provide a useful cleavage mechanism, such that a PD payload could be slowly released in a target area (e.g., a tumour microenvironment) without being carried away by blood thiols.

In this work, we have for the first time explored the use of the pyridazinedione motif in the context of dynamic reversible cysteine modification. When comparing this motif with other Michael acceptors used in the field (e.g., highly thiol-reactive maleimides and cyanoacrylates) we observe slow release of PD over time, the absence of any competing hydrolysis and a lack of reactivity between PDs and blood thiols (particularly with blood thiol serum albumin). The PD scaffold that we report on could have a unique place in the extracellular cleavable linker space by providing an opportunity for consistent slow release of cargo, which can then diffuse into cells and undergo intracellular specific cleavage, as a novel alternative to triggered cleavable linkers applied in the same context. Through rational bioconjugate design, a targeting protein, with a suitable blood half-life, modified with PD linkers could provide a slow release of payload without concern over cleavage in off-target areas. We also believe the time-dependent degradation of pyridazinedione–thiol motif could have a variety of *ex vivo* applications wherein

maleimide–thiol conjugates are used as degradable systems (e.g., synthesis of hydrogels).³⁵

We gratefully acknowledge the EPSRC (CASE Award with LifeArc, 173621) for funding C. B., and the Leverhulme Trust (RPG-2017-288, 176274) for funding R. J. S. A. M. would like to acknowledge the Ramsay Memorial trust for provision of a Ramsay Fellowship. F. J. and P. S. would like to thank the Wellcome Trust for funding.

Conflicts of interest

There are no conflicts to declare.

Notes and references

- O. Boutureira and G. J. L. Bernardes, *Chem. Rev.*, 2015, **115**, 2174–2195.
- C. D. Spicer and B. G. Davis, *Nat. Commun.*, 2014, **5**, 1–14.
- S. Sechi and B. T. Chait, *Anal. Chem.*, 1998, **70**, 5150–5158.
- Y. Kim, S. O. Ho, N. R. Gassman, Y. Korlann, E. V. Landorf, F. R. Collart and S. Weiss, *Bioconjugate Chem.*, 2008, **19**, 786–791.
- O. Koniev and A. Wagner, *Chem. Soc. Rev.*, 2015, **44**, 5495–5551.
- V. Chudasama, A. Maruani and S. Caddick, *Nat. Chem.*, 2016, **8**, 114–119.
- A. Beck, L. Goetsch, C. Dumontet and N. Corvaia, *Nat. Rev. Drug Discovery*, 2017, **16**, 315–337.
- A. G. Polson, *et al.*, *Blood*, 2007, **110**, 616–623.
- S. M. Ansell, *Blood*, 2014, **124**, 3197–3200.
- J. D. Bargh, A. Isidro-Llobet, J. S. Parker and D. R. Spring, *Chem. Soc. Rev.*, 2019, **48**, 4361–4374.
- R. G bleux, M. Stringhini, R. Casanova, A. Soltermann and D. Neri, *Int. J. Cancer*, 2017, **140**, 1670–1679.
- G. J. L. Bernardes, G. Casi, S. Tr ssel, I. Hartmann, K. Schwager, J. Scheuermann and D. Neri, *Angew. Chem., Int. Ed.*, 2012, **51**, 941–944.
- A. Dal Corso, R. G bleux, P. Murer, A. Soltermann and D. Neri, *J. Controlled Release*, 2017, **264**, 211–218.
- A. Dal Corso, S. Cazzamalli, R. G bleux, M. Mattarella and D. Neri, *Bioconjugate Chem.*, 2017, **28**, 1826–1833.
- T. H. Pillow and J. A. Flygare, *et al.*, *Chem. Sci.*, 2017, **8**, 366–370.
- M. Danial and A. Postma, *Ther. Delivery*, 2017, **8**, 359–362.
- A. D. Baldwin and K. L. Kiick, *Bioconjugate Chem.*, 2011, **22**, 1946–1953.
- H. Wu, P. J. Levalley, T. Luo, A. M. Kloxin and K. L. Kiick, *Bioconjugate Chem.*, 2018, **29**, 3595–3605.
- B. Q. Shen, *et al.*, *Nat. Biotechnol.*, 2012, **30**, 184–189.
- A. Maruani, M. E. B. Smith, E. Miranda, K. A. Chester, V. Chudasama and S. Caddick, *Nat. Commun.*, 2015, **6**, 6645–6655.
- C. Bahou, D. A. Richards, A. Maruani, E. A. Love, F. Javid, S. Caddick, J. R. Baker and V. Chudasama, *Org. Biomol. Chem.*, 2018, **16**, 1359–1366.
- C. Bahou, E. A. Love, S. Leonard, R. J. Spears, A. Maruani, K. Armour, J. R. Baker and V. Chudasama, *Bioconjugate Chem.*, 2019, **30**, 1048–1054.
- (a) V. Chudasama, M. E. B. Smith, F. F. Schumacher, D. Papaioannou, G. Waksman, J. R. Baker and S. Caddick, *Chem. Commun.*, 2011, **47**, 8781; (b) A. Maruani, S. Alom, P. Canavelli, M. T. W. Lee, R. E. Morgan, V. Chudasama and S. Caddick, *Chem. Commun.*, 2015, **51**, 5279–5282.
- I. M. Serafimova, M. A. Pufall, S. Krishnan, K. Duda, M. S. Cohen, R. L. Maglathlin, J. M. McFarland, R. M. Miller, M. Fr din and J. Taunton, *Nat. Chem. Biol.*, 2012, **8**, 471–476.
- M. F. Schlecht, *Molecular Modeling on the PC*, Wiley-VCH, New York, 1998.
- K. E. Gilbert, *PCMODEL, version 8.5*, SerenaSoftware, Bloomington.
- C. A. G. Haasnoot, F. A. A. M. de Leeuw and C. Altona, *Tetrahedron*, 1980, **36**, 2783–2792.
- P. Moody, M. E. B. Smith, C. P. Ryan, V. Chudasama, J. R. Baker, J. Molloy and S. Caddick, *ChemBioChem*, 2012, **13**, 39–41.
- S. Matsui and H. Aida, *J. Chem. Soc., Perkin Trans. 2*, 1978, 1277.
- J. M. J. M. Ravasco, H. Faustino, A. Trindade and P. M. P. Gois, *Chem. – Eur. J.*, 2019, **25**, 43–59.
- A. D. Baldwin and K. L. Kiick, *Bioconjugate Chem.*, 2011, **22**, 1946–1953.
- R. G bleux, S. Wulhfard, G. Casi and D. Neri, *Mol. Cancer Ther.*, 2015, **14**, 2606–2612.
- G. J. L. Bernardes, G. Casi, S. Tr ssel, I. Hartmann, K. Schwager, J. Scheuermann and D. Neri, *Angew. Chem., Int. Ed.*, 2012, **51**, 941–944.
- G. Hao, Z. P. Xu and L. Li, *RSC Adv.*, 2018, **8**, 22182–22192.
- A. D. Baldwin and K. L. Kiick, *Polym. Chem.*, 2013, **4**, 133–143.

