

Pharmaceuticals and Personal Care Products in the Environment and at Home

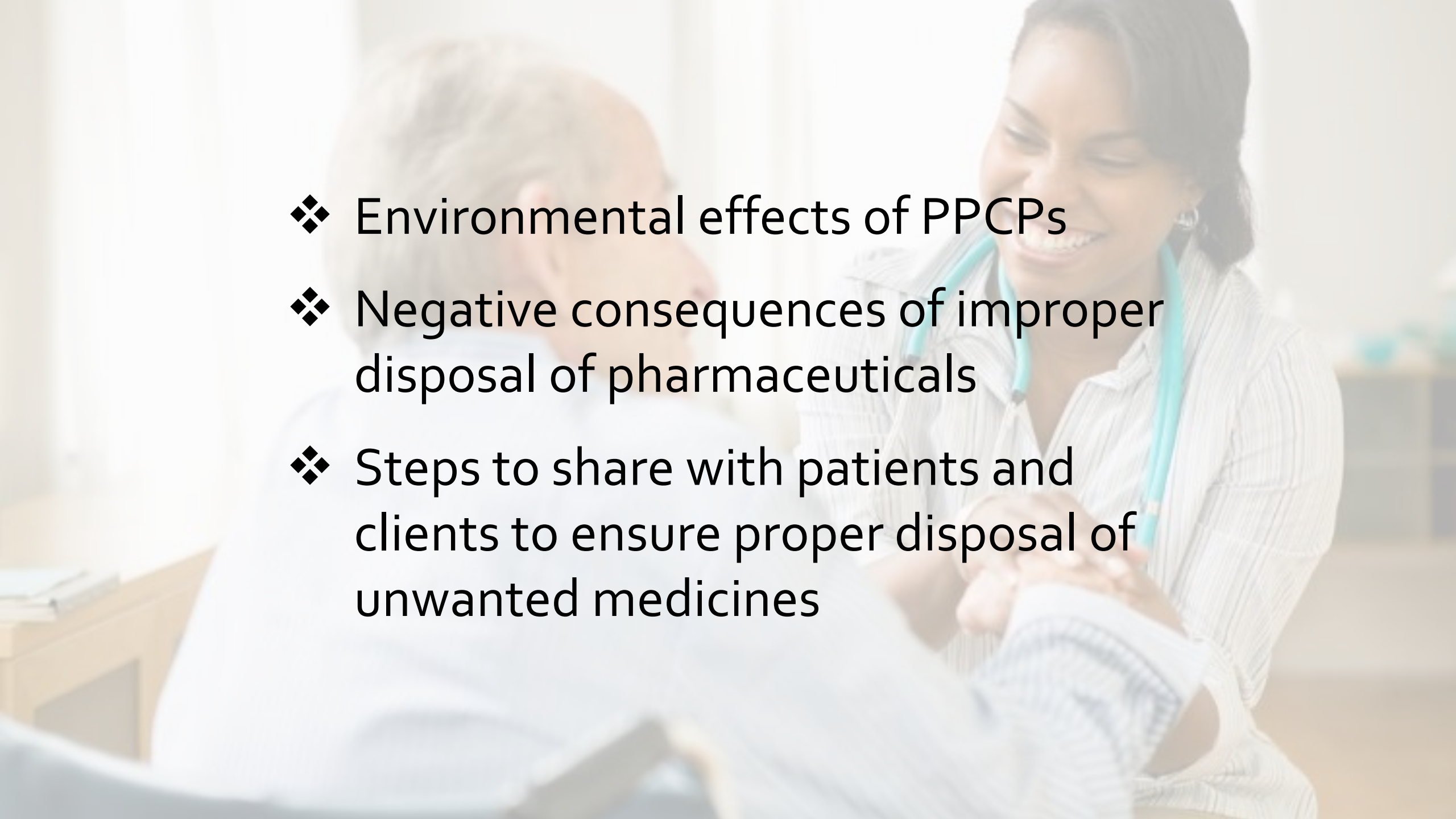
Proper Medicine Disposal

Common PPCPs

- Caffeine
- Ibuprofen
- Antibacterial soap
- Estrogens





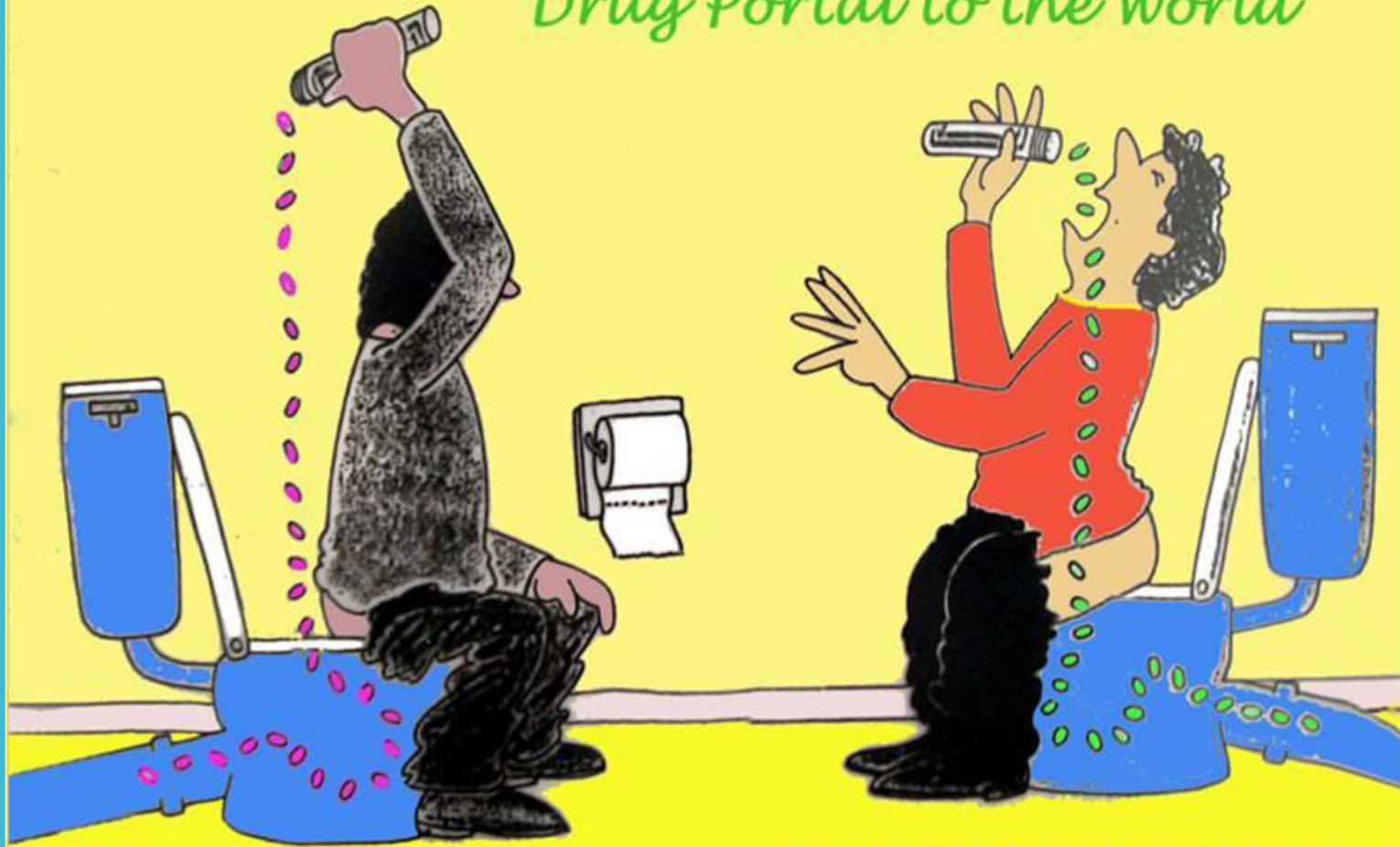
- 
- A blurred background image showing a female doctor with a stethoscope around her neck, smiling warmly at an elderly male patient. The doctor is wearing a light-colored, striped lab coat. The patient is wearing a white hospital gown. The setting appears to be a clinical or hospital environment.
- ❖ Environmental effects of PPCPs
 - ❖ Negative consequences of improper disposal of pharmaceuticals
 - ❖ Steps to share with patients and clients to ensure proper disposal of unwanted medicines







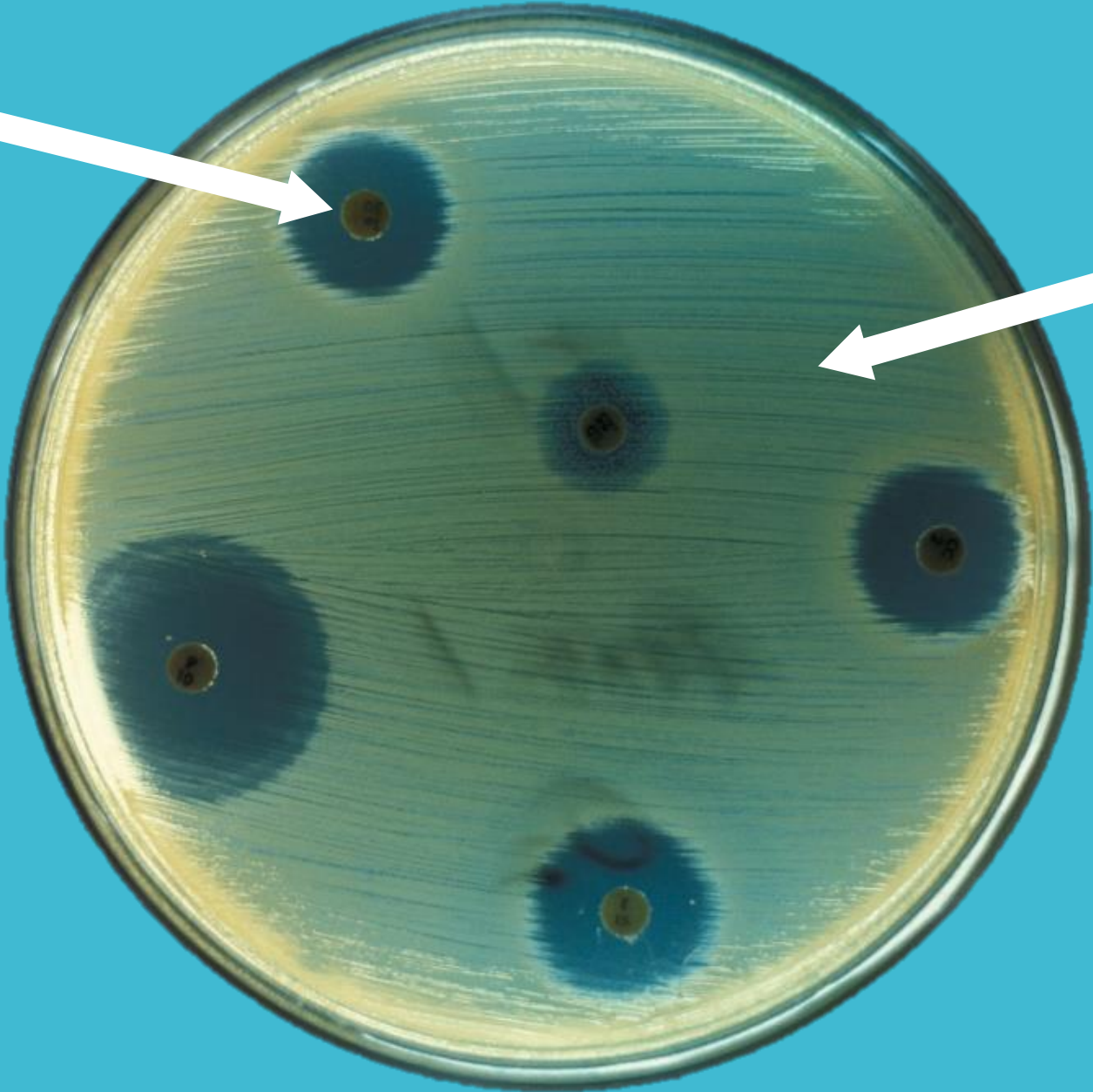
Drug Portal to the World



adapted by Daughton from Ternes (April 2000)



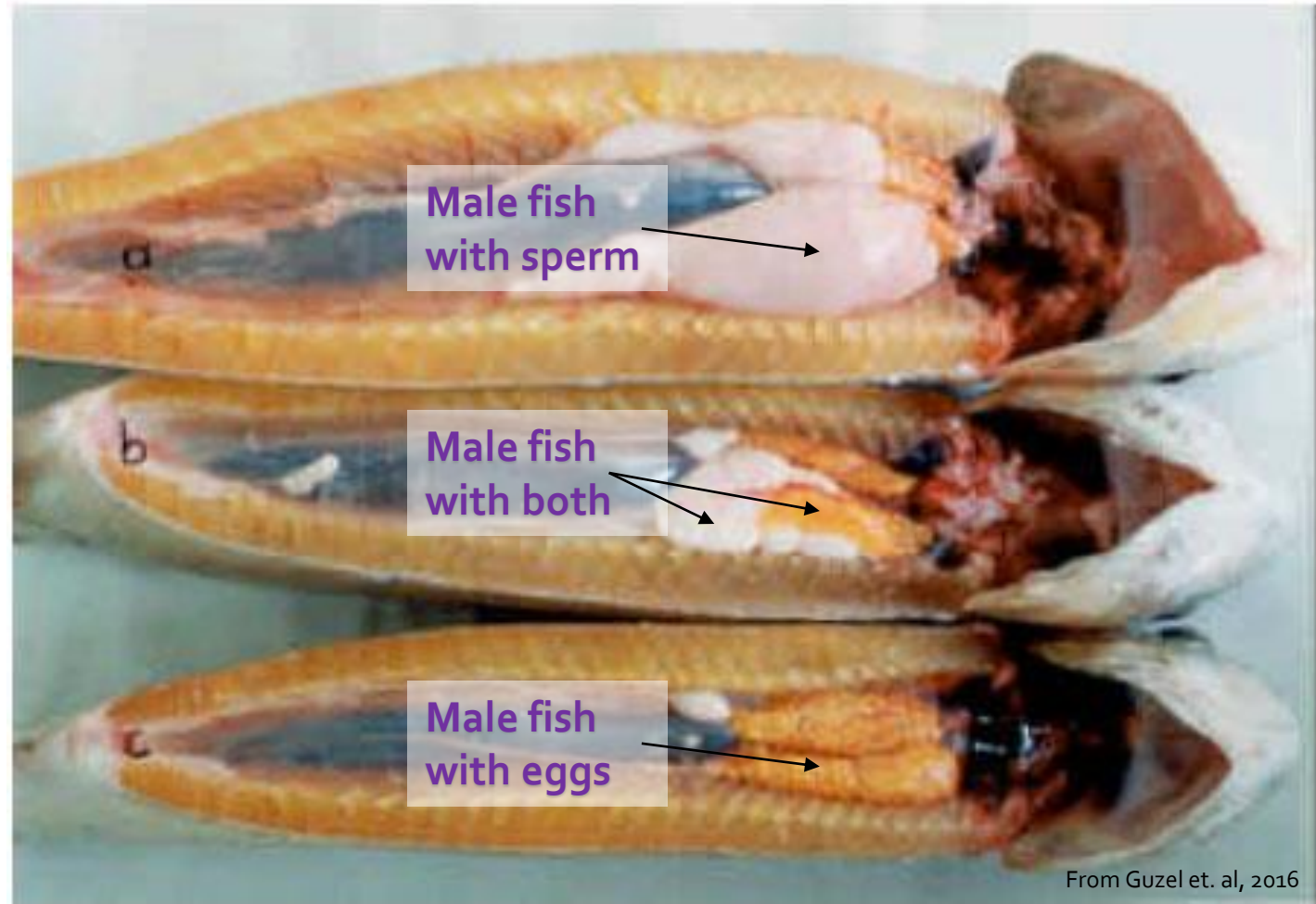
Bacteria



Growing
medium
containing
antibiotics



Feminization
of male fish:
Male fish
exposed to
estrogen
compounds
developed
eggs in gonads















60,000 young children are treated in emergency rooms every year due to accidental medicine poisoning



Accidental ingestion of human prescription and over-the-counter medications is the most common cause of pet poisoning





Prescription drug abuse on the rise among teens





76% of adults
over age 60
use two or
more
prescription
drugs per
month





What is an unwanted
medicine and why would
people have them?

What is a medicine
take-back program?

How do I dispose of
unwanted medicines?

ITEMS ACCEPTED

- ✓ Prescription medications (including controlled)
- ✓ All over-the-counter medications
- ✓ Pet medications
- ✓ Vitamins & Supplements
- ✓ Medicated ointments, lotions, creams, and oils
- ✓ Liquid medication in leakproof containers

ITEMS NOT ACCEPTED

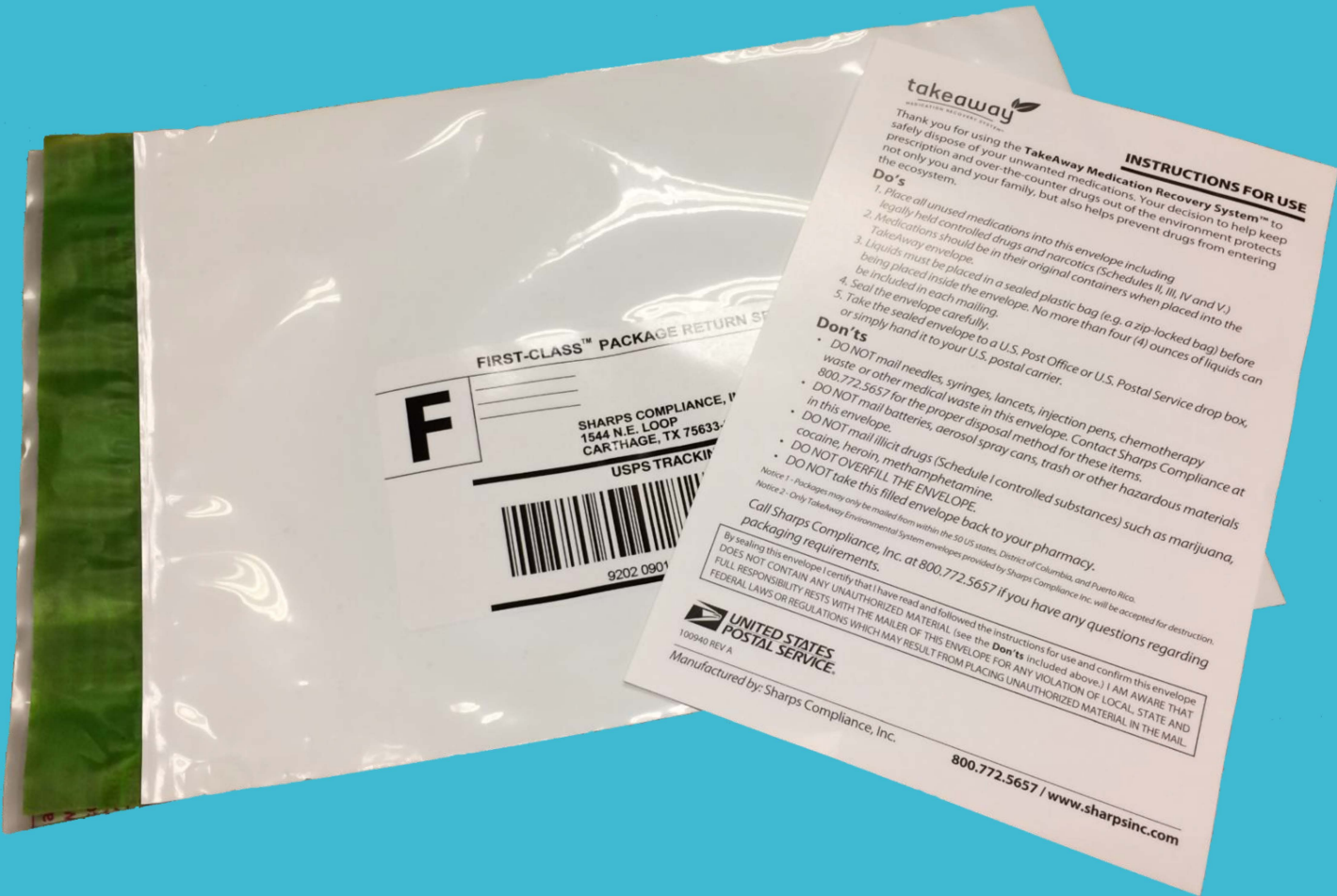
- ✗ Needles/sharps
- ✗ Syringes with needles
- ✗ Thermometers
- ✗ IV Bags
- ✗ Bloody or infectious waste
- ✗ Personal care products
- ✗ Empty containers
- ✗ Hydrogen Peroxide
- ✗ Aerosol cans
- ✗ Full Inhalers



Why can't I take medicines
back to where I got them?

What happens to medicines after they have been dropped off at a take-back box or one day collection event?

Why can't I donate my medications?

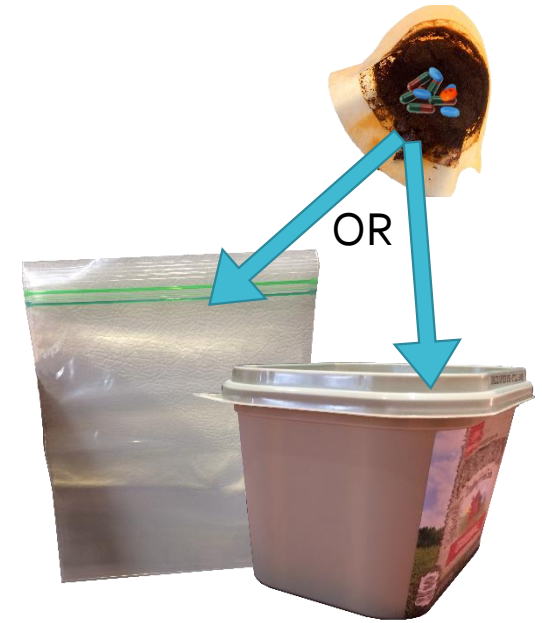


Safe Home Disposal Steps

1



2



3



4



What can healthcare
professionals do?

Talk to patients
and colleagues



Talk about it at
health fairs



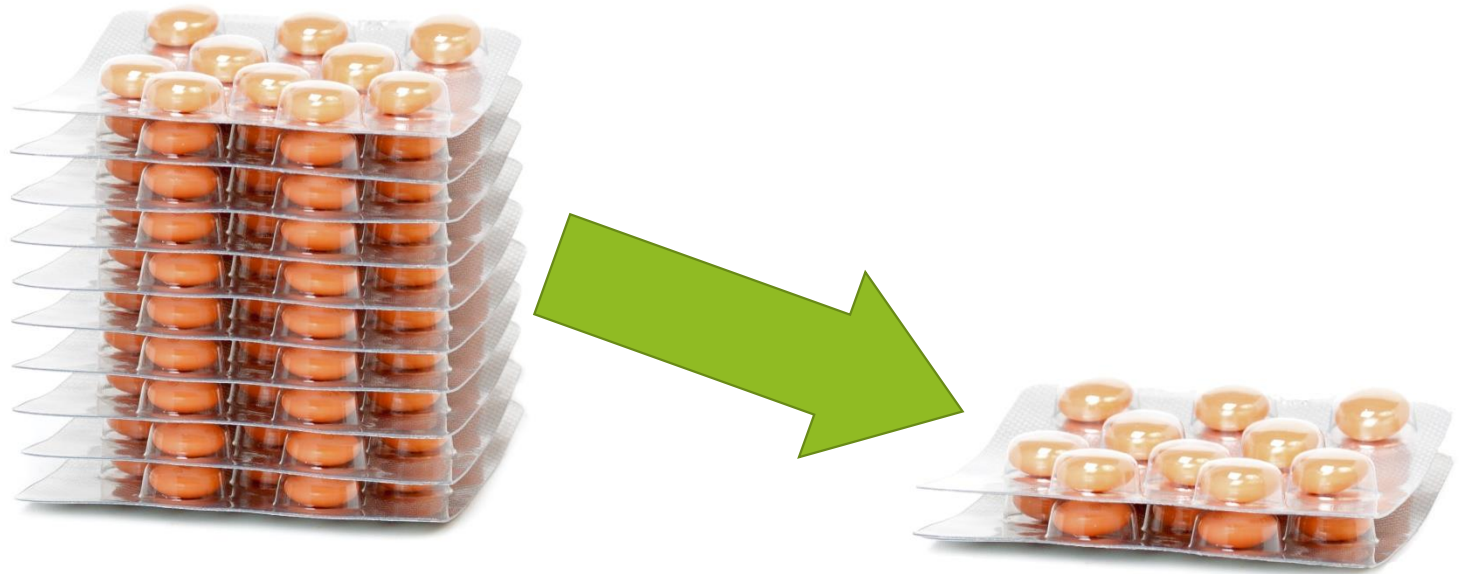
Provide information

Start a take-back program



unwantedmeds.org

Reduce trial
quantity as
appropriate



More Info

- Research: istc.Illinois.edu/research/ppcps/
- Safe Disposal Programs: unwantedmeds.org



Special Thanks



**ILLINOIS SUSTAINABLE
TECHNOLOGY CENTER**
PRAIRIE RESEARCH INSTITUTE



UNIVERSITY OF ILLINOIS
EXTENSION

© 2016 The Board of Trustees of the University of Illinois