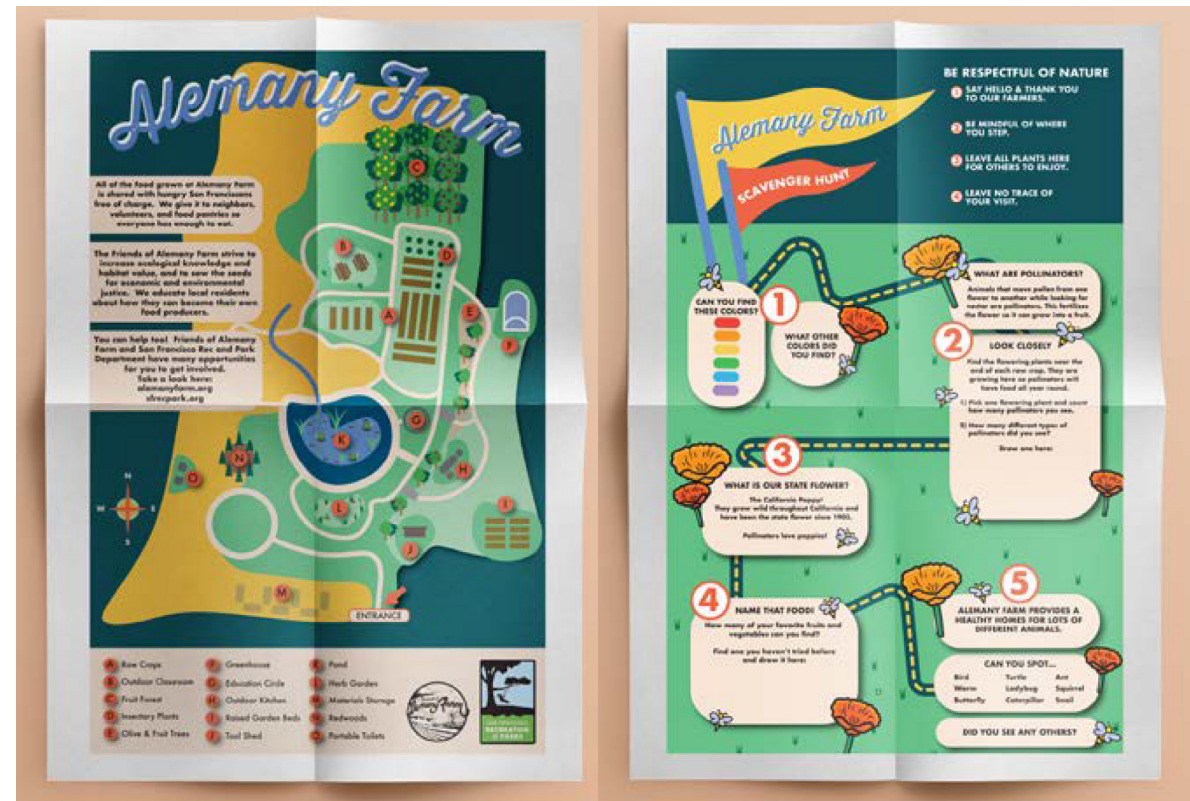


# Using design to address disparities in nature access for children

## USFCA's Design Partnership with SF Children & Nature and Alemany Farm

Tessa Bartholio, Gabrielle Kim, Reanne Lacosta, Lily Turner-Kipke

ART 365: Design Activism, Community Engaged Learning  
Professor Rachel Beth Egenhoefer



Four designers collaborated with SF Children & Nature and Alemany Farm to create projects aiming to bridge the gap between disparities in nature access along socioeconomic and racial lines, ensuring all children have the opportunity to play, learn and grow in the outdoors. Students worked alongside community partners to create an annual digital report, maps, interactive nature tools, and scavenger hunts to encourage these goals.

Through this opportunity students learned about collaborative work through consistent communication and frequent critiques. Most importantly they learned how design can become a bridge between children and nature - making outdoor opportunities more accessible.

