

University of Nebraska - Lincoln

DigitalCommons@University of Nebraska - Lincoln

USDA National Wildlife Research Center - Staff
Publications

U.S. Department of Agriculture: Animal and
Plant Health Inspection Service

2020

Invasive Wild pigs as primary nest predators for Wild turkeys

Heather N. Sanders

Texas A&M University Kingsville

David G. Hewitt

Texas A&M University Kingsville, david.hewitt@tamuk.edu

Humberto L. perotto-Baldivieso

Texas A&M University Kingsville

Kurt C. VerCauteren

USDA/APHIS/Wildlife Services, National Wildlife Research Center

Nathan P. Snow

USDA APHIS Wildlife Services NWRC, Nathan.P.Snow@usda.gov

Follow this and additional works at: https://digitalcommons.unl.edu/icwdm_usdanwrc



Part of the [Natural Resources and Conservation Commons](#), [Natural Resources Management and Policy Commons](#), [Other Environmental Sciences Commons](#), [Other Veterinary Medicine Commons](#), [Population Biology Commons](#), [Terrestrial and Aquatic Ecology Commons](#), [Veterinary Infectious Diseases Commons](#), [Veterinary Microbiology and Immunobiology Commons](#), [Veterinary Preventive Medicine, Epidemiology, and Public Health Commons](#), and the [Zoology Commons](#)

Sanders, Heather N.; Hewitt, David G.; perotto-Baldivieso, Humberto L.; VerCauteren, Kurt C.; and Snow, Nathan P., "Invasive Wild pigs as primary nest predators for Wild turkeys" (2020). *USDA National Wildlife Research Center - Staff Publications*. 2316.

https://digitalcommons.unl.edu/icwdm_usdanwrc/2316

This Article is brought to you for free and open access by the U.S. Department of Agriculture: Animal and Plant Health Inspection Service at DigitalCommons@University of Nebraska - Lincoln. It has been accepted for inclusion in USDA National Wildlife Research Center - Staff Publications by an authorized administrator of DigitalCommons@University of Nebraska - Lincoln.

OPEN

Invasive Wild Pigs as Primary Nest Predators for Wild Turkeys

Heather N. Sanders¹, David G. Hewitt¹, Humberto L. Perotto-Baldivieso¹, Kurt C. VerCauteren² & Nathan P. Snow¹ ^{2*}

Depredation of wild turkey (*Meleagris gallopavo*) nests is a leading cause of reduced recruitment for the recovering and iconic game species. Invasive wild pigs (*Sus scrofa*) are known to depredate nests, and have been expanding throughout the distributed range of wild turkeys in North America. We sought to gain better insight on the magnitude of wild pigs depredating wild turkey nests. We constructed simulated wild turkey nests throughout the home ranges of 20 GPS-collared wild pigs to evaluate nest depredation relative to three periods within the nesting season (i.e., early, peak, and late) and two nest densities (moderate = 12.5–25 nests/km², high = 25–50 nests/km²) in south-central Texas, USA during March–June 2016. Overall, the estimated probability of nest depredation by wild pigs was 0.3, equivalent to native species of nest predators in the study area (e.g., gray fox [*Urocyon cinereoargenteus*], raccoon [*Procyon lotor*], and coyote [*Canis latrans*]). Female wild pigs exhibited a constant rate of depredation regardless of nesting period or density of nests. However, male wild pigs increased their rate of depredation in areas with higher nest densities. Management efforts should remove wild pigs to reduce nest failure in wild turkey populations especially where recruitment is low.

Generalist invasive species negatively impact native species by both consuming and competing with the native species for resources^{1,2}. In particular, the negative impact of invasive wild pigs (*Sus scrofa*); also termed feral swine, feral hogs, or wild boars³; on native ecosystems has become an increasing concern as populations of wild pigs continue to expand⁴. Wild pigs were first introduced to North America by European colonists in the early 1500s⁵. Over the past 3 decades wild pigs have rapidly expanded their range from 18 to 35 of the 50 United States⁶, because of their generalist nature and continued translocation by humans^{7–10}. In their expanded range, wild pigs have the potential to triple their population every 5 years in the absence of control efforts¹⁰, leading to detrimental effects on native species⁴. In particular, wild pigs alter habitat and compete with and prey upon native species^{11–14}.

Wild pigs have been implicated as nest predators for ground-nesting birds and reptiles^{15–18}. Nest failure is the most substantial limitation on population growth of ground-nesting birds, and has been predominantly attributed to nest depredation^{19–21}. The impacts of specific nest predators, such as wild pigs, on the reproductive success of a ground-nesting bird can depend on predator behavior. Reports suggest that wild pigs depredate nests opportunistically^{22,23}, or contrarily seek high concentrations of nests¹⁵, although additional reports are variable^{4,18,24}. The inconsistency in findings demonstrate that the mechanisms of nest depredation by wild pigs are not well understood.

Wild turkeys (*Meleagris gallopavo*) are an iconic game species in the United States that were brought to near extinction from overexploitation during the 19th century^{25,26}. Intensive recovery efforts have since ensued, and in 2003 the economic impact of the spring wild turkey season was valued at \$1.8 billion USD nationally²⁷. With the expansion of wild pigs throughout the US, many populations of wild turkey are facing a new challenge from nest depredation e.g.^{18,24}. Wild turkeys exhibit spatially-aggregated nesting behavior by selection of specific habitat structure²⁸. This aggregation makes wild turkey nests particularly vulnerable to predators that actively seek nests in habitat where nesting is most likely to occur^{29,30}. For this reason, it has been suggested that removing wild pigs may increase wild turkey recruitment³¹.

Simulated nests have been widely used to assess different aspects of nest depredation. However, this practice has been criticized for potential to have different depredation rates and attract different predators than natural nests^{24,32,33}. While traditional transect methods for simulated nest studies may result in inflated depredation rates, simulated nest studies which place nests randomly within turkey nesting habitat have shown depredation rates

¹Caesar Kleberg Wildlife Research Institute, Texas A&M University Kingsville, 700 University Boulevard, Kingsville, TX, 78363, USA. ²USDA/APHIS/Wildlife Services, National Wildlife Research Center, 4101 LaPorte Avenue, Fort Collins, CO, 80521, USA. *email: Nathan.P.Snow@usda.gov

similar to natural turkey nests³⁴. Additionally, simulated nest studies allow for assessment of the influence of the density of nests on nest depredation³⁵.

We used simulated wild turkey nests to evaluate the magnitude of nest predation by wild pigs relative to native nest predators throughout the nesting season in 2016. We also simulated differing densities of nests to evaluate for changes in the frequency of nest predation. Our first objective was compare the frequency of nest consumption by wild pigs to that of native nest predators. Secondly, we assessed the role of seasonality and density of nests in the depredation of nests by wild pigs. Finally, we evaluated differences in consumption of nests by sex and age of wild pigs. Our results will inform efforts to mitigate the impacts of wild pigs on wild turkeys.

Methods

Study area. Our study area was located in south-central Texas (Bexar County), USA (Latitude 29.622 N, Longitude 98.572 W). Specifically, we worked on Camp Bullis Military Reserve, an 11,000 ha military training base that is bordered by both urban and rural ecosystems. Topography on Camp Bullis is typical of the Edwards Plateau: rolling hills with limestone outcrops and rocky soils³⁶. Vegetation is an oak woodland and grassland matrix^{37,38}. Streams and pools are available seasonally during periods of high precipitation. Camp Bullis contains populations of both wild pigs and Rio Grande wild turkey (*M. gallopavo intermedia*), as well as potential nest predators including raccoons (*Procyon lotor*), gray foxes (*Urocyon cinereoargenteus*), coyotes (*Canis latrans*), bobcats (*Lynx rufus*), opossums (*Didelphis virginiana*), striped skunks (*Mephitis mephitis*), armadillos (*Dasypus novemcinctus*), corvids, and snakes^{23,28}. In 2006, a suspected release or immigration from surrounding properties of wild pigs occurred on Camp Bullis, resulting in abundant wild pigs throughout the study area (M. L. Cooksey, U.S. Army Environmental Command, personal communication). In 2017, the density of wild pigs was reported to average 3.5 wild pigs per km²³⁹.

Capture and monitoring of wild pigs. Methods for this study were similarly reported for a simultaneous study²³. We captured wild pigs using corral and box traps baited with whole-kernel corn between 15 January and 15 March 2016. We immobilized adult wild pigs (estimated to be >45 kg) using an intramuscular injection of 3.3 mg/kg Telazol® (Zoetis, Parsippany, New Jersey, USA) and 1.5 mg/kg xylazine hydrochloride (Wildlife Pharmaceuticals, Inc., Windsor, Colorado, USA⁴⁰). We applied uniquely identifiable ear tags (Allflex® A Cattle Tags, Allflex USA Inc., Dallas, Texas, USA) and Global Positioning System (GPS) satellite-transmitting collars (VERTEX PLUS-2 Collar, VECTRONIC Aerospace GmbH, Berlin, Germany) to the immobilized wild pigs. After handling was complete, we intramuscularly injected 0.2 mg/kg yohimbine hydrochloride (Wildlife Pharmaceuticals, Inc., Windsor, Colorado, USA) as a reversal agent⁴⁰. To ensure spatial coverage of GPS-collared wild pigs across Camp Bullis, we marked ≤ 2 wild pigs from any social group captured, and we moved traps regularly into locations where wild pigs had not yet been marked. All capture and handling procedures were approved by the Texas A&M University-Kingsville's Institutional Animal Care and Use Committee (2015-08-20), and all methods were performed in accordance with guidelines outlined in that protocol.

We programmed the GPS collars to record and store locations at 15-minute intervals throughout the study period. Every sixth location was transmitted via Iridium satellite (Iridium Communications, Inc. McLean, Virginia). A drop-off mechanism on each collar was programmed to automatically disconnect the collars on 15 August 2016, after which the full dataset was retrieved from onboard storage. Overall, we attached GPS collars to 35 wild pigs (17 males and 18 females); seven used inaccessible areas (i.e., adjacent private lands), four collars slipped off, one collar failed, and one collared wild pig was killed by an adjacent landowner during the study. Movements of two collared male wild pigs were expansive, covering most of the study area, and could not be targeted for simulated nest deployment. Therefore, we ultimately considered 20 wild pigs (13 males and 7 females) as our primary study animals.

We calculated real-time home ranges for each wild pig every 14 days using transmitted locations from the previous 28 days to inform our placement of simulated nests. Specifically, we calculated the 95% minimum convex polygon home ranges using package `adehabitatHR`⁴¹ in Program R (v3.3.1, www.r-project.org, The R Foundation, Vienna, Austria⁴²);. We used minimum convex polygons because this method conservatively estimates a maximum extent of space-use for each animal⁴³, ensuring our placement of simulated nests would target the entirety of areas used by collared wild pigs.

Nesting habitat suitability model. We built a habitat suitability model to guide our placement of nests within the home ranges of wild pigs using published metrics of nest site selection in wild turkeys^{44,45}. Specifically, we used ERDAS Imagine® (Hexagon Geospatial, Norcross, Georgia) to classify aerial imagery from the 2014 National Agriculture Imagery Program with 1 m resolution (USDA-FSA-APFO Aerial Photography Field Office, Salt Lake City, Utah) from 4 images into woody and herbaceous cover. We conducted an accuracy assessment using 1,200 ground control points and determined the overall accuracy was 89%. We imported classified images into FRAGSTATS v4.2⁴⁶, and used moving windows analyses with a 100-m radius for woody cover on the following metrics: percent land cover, edge density, patch density, and largest patch index. We used ArcGIS (v10.3.1, Environmental Systems Research Institute, Inc., Redlands, CA, USA) to combine the resulting landscape metrics layers and reclassify them into nesting and non-nesting habitat. A location was considered suitable for nesting if the surrounding 100 m had woody cover of 10 to 70%, edge density of >75 m/ha, patch density of >50 patches/100 ha, and a largest patch index of <50%^{44,45}.

Placement, construction, and monitoring of simulated nests. We divided the 20 collared wild pigs into nest density treatments (9 = moderate, and 11 = high) based on non-overlapping space-use so that the density treatments did not overlap. We generated random points using ArcGIS to select the locations of nests within each home range. We randomly placed simulated nests throughout areas identified as nesting habitat within the

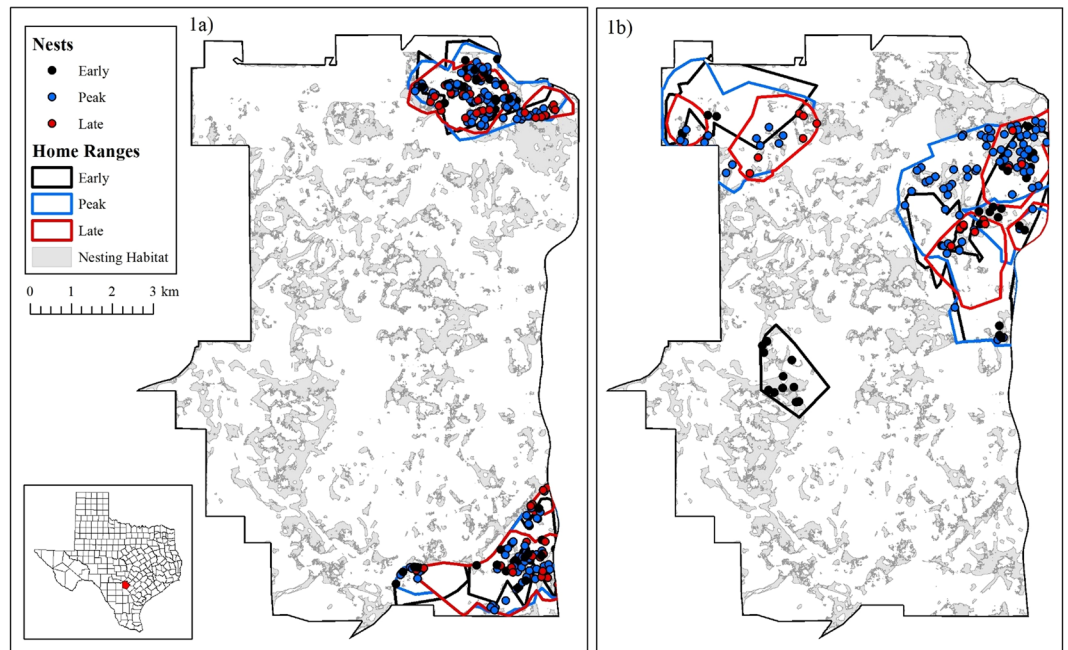


Figure 1. Treatment areas and subsequent distributions of nests within the study area in Bexar County, Texas, USA during the early, peak, and late nesting periods for (a) the high density, and (b) the moderate density treatment areas. Treatment areas were delineated by combining overlapping home ranges (95% minimum convex polygon) of wild pigs to create contiguous areas for each nesting period.

home ranges of collared wild pigs. We modified selection of the nest sites on the ground to be ≤ 50 m from each generated random point and best represent true nesting habitat by selecting for small patches of woody cover with dense understory⁴⁴. We randomly assigned two treatments for density of nests to the home ranges of individual wild pigs, including: 1) moderate density with 25 nests/km² nesting habitat, and 2) high density with 50 nests/km² nesting habitat). We based our moderate density treatment on an estimated density of turkeys in oak savanna habitat in south Texas of 13 birds/km² with an estimated sex ratio of 45% female^{47,48}, and an estimate of 97% initiation of nests by hens⁴⁹. We corrected the estimated nests/km² by the proportion of the study area that was designated as nesting habitat according to our habitat suitability model. We doubled the moderate density value to determine our high density treatment and to evaluate the response of wild pigs to extremely high concentrations of wild turkey nests.

We utilized random block design to mimic natural nesting chronology of wild turkeys and assess the role of timing within nesting period while maintaining our experimental density treatments. Specifically, we split the nesting season into three 28-day nesting periods including: (1) early period from 28 March to 24 April, (2) peak period from 25 April to 22 May, and (3) late period from 23 May to 20 June. Therefore, the simulated nesting density for the moderate density treatment varied from: early = 12.5 nests/km², peak = 25 nests/km², and late = 12.5 nests/km². Whereas, the high density treatment varied from: early = 25 nests/km², peak = 50 nests/km², and late = 25 nests/km². Overall, we constructed 384 simulated turkey nests between 28 March and 20 June 2016 within the home ranges of collared wild pigs, including 137 nests in the moderate and 247 in the high density treatments (Fig. 1).

We constructed simulated nests using unwashed domestic chicken (*Gallus domesticus*) eggs, which are similar in both size and shape to wild turkey eggs⁵⁰. We placed 10 eggs in a shallow nest bowl lined with leaves. We made no attempt to obstruct the nest with leaf litter. To minimize the addition of human scent, we wore clean rubber soled boots and latex gloves at all nest sites and while handling equipment. We monitored nests for evidence of depredation every seven days for 28 days. If a nest survived 28 days, we removed the nest and placed a new nest at a new random location to maintain density. Similarly, if a nest was depredated, we placed a new nest in a new random location within the same home range to maintain consistent nest density treatments within the home ranges throughout the study.

We randomly selected and monitored a subset of 50 nests using motion detecting cameras (Reconyx PC900 Hyperfire™ Professional Covert IR Cameras, RECONYX, Inc., Holmen, Wisconsin) placed approximately 25 cm above the nest and 2 m away to identify the predators of nests. For nests with >1 species of predator, we identified the primary predator based on which species spent the most time depredating. We also recorded the number of encounters for each species of predator, which we defined as any time a predator approached within ≤ 1 m of the nest bowl. Finally, we determined the sex and age class (adult or juvenile) of each observed wild pig by examining their secondary sex characteristics, where adults had enlarged, protruding testes or nipples suggesting sexual maturity. We did not identify sex of juvenile wild pigs. We characterized foraging by wild pigs by sex and age class (adult or juvenile) observed participating in depredation.

Predator Species	Depredation	Primary Depredation
Wild Pig	15 (29%)	12 (23%)
Gray Fox	11 (21%)	7 (13%)
Coyote	9 (17%)	6 (12%)
Raccoon	10 (19%)	5 (10%)
Striped Skunk	4 (8%)	2 (4%)
Armadillo	1 (2%)	0 (0%)
Unidentified	—	7 (13%)
Total	—	39 (75%)

Table 1. Number (and percent) of nests where depredation was recorded and for which that species was the primary nest predator observed in Bexar County, Texas during 2016.

Data analysis. We used binomial generalized linear models with logit links (glm) in Program R to evaluate whether our study methods seemed to influence our results. First, there are conflicting reports that cameras on nests may repel predators^{51,52}, or possibly alert predators to the location of monitored nests and inflate predation rates²⁴. Therefore, we analyzed the effect of camera monitoring on the probability of depredation to determine if the sample of nests monitored with cameras was representative of those without cameras. Second, we also recognized that eggs may have become more odorous over time, which may increase the rate of depredations. Therefore, we analyzed whether the number of days a nest had been active influenced the probability it was depredated by a wild pig.

We also compared the proportions of nests depredated by each species of predator using Fisher's exact test. Then, we used binomial glms to evaluate for influences from the nesting period and density of nests, and the interaction of period \times density, on the probability of depredation by each species of predator. We also predicted the probability that a nest would be depredated for each nesting period and nest density treatment for all species of nest predators pooled, and for each species of nest predator individually. Additionally, we predicted the probability a nest would be depredated by male and female wild pigs.

We used a binomial hypothesis test to assess the hypothesis that wild pigs will consume a nest once they discover it (i.e., observed on camera at the nest). Specifically, we compared the number of times wild pigs depredated a nest to the number of times wild pigs approached a nest ≤ 1 m but did not depredate the nest. We compared the ratio of foraging events to the number of times a nest was discovered among predator species using Fisher's exact test. We used the level of $\alpha = 0.05$ to represent statistical and biological influences for all tests.

Results

We observed that 300 of 384 simulated nests (78.1%) were partially or wholly depredated. Nests with cameras did not have a different depredation rate (75.0%) than those without (78.3%; $F_{1,382} = 0.285$, $P = 0.594$). We also found no evidence that increasing odors from the eggs increased predation rates through time. The estimated odds that a nest would be depredated by wild pigs decreased by 6.8% for every day a nest was active ($F_{1,1378} = 10.19$, $P = 0.001$).

From the 52 nests monitored with cameras, we identified 6 wildlife species that depredated nests, including wild pigs, gray foxes, raccoons, coyotes, striped skunks, and a nine-banded armadillo. Wild pigs depredated 15 of the 52 (29%) nests. Gray foxes (21%), raccoons (19%), and coyotes (17%) were also frequent nest predators (Table 1). In all cases, the primary nest predators were also the first nest predators to visit the nests. We also observed nest depredation by an unidentified snake species during manual nest checks but did not observe via camera. We only recorded 1 observation of depredation by an armadillo, therefore we excluded armadillos from further analysis. In seven instances of nest depredations we could not identify the predator.

We found that no species of nest predator depredated a higher proportion of nests than another species (two-sided $P = 0.079$). Similarly, the 95% CIs on the predicted probabilities of depredation overlapped for wild pigs, coyotes, gray foxes, and raccoons (Fig. 2). The interaction of period \times density was not significant for any species of nest predator, therefore we excluded the interaction from all models. For all nests, the probability of nest depredation varied by period with the highest probability during peak nesting ($F_{2,381} = 29.88$, $P < 0.001$; Table 2), but did not vary by density treatment ($F_{1,382} = 1.437$, $P = 0.231$). The probability that a nest was depredated by a wild pig did not differ by nesting period ($F_{2,49} = 1.788$, $P = 0.178$; Fig. 3) or by density treatment ($F_{1,50} = 1.911$, $P = 0.173$; Fig. 4).

Wild pigs depredated nests during 58.2% of observed encounters with nests. This was not significantly different from the proportion depredated at discovery by raccoons, gray foxes, or coyotes (two tailed $P = 0.071$). Probability of depredation given that a nest had been discovered did not vary by sex ($F_{2,149} = 0.068$, $P = 0.935$) or age class ($F_{2,149} = 0.302$, $P = 0.739$) of wild pigs. The probability that a nest would be depredated by a male wild pig was substantially greater in the areas with a high versus moderate densities of nests ($F_{1,50} = 5.288$, $P = 0.026$), but did not differ among nesting periods ($F_{2,49} = 1.633$, $P = 0.206$; Table 2). The probability that a nest would be depredated by a female wild pig did not differ by density or nesting period ($F_{2,49} = 0.252$, $P = 0.778$; $F_{1,50} = 0.159$, $P = 0.692$; Table 2).

Discussion

Our finding that nearly 80% of simulated wild turkey nests being depredated is concerning for wild turkey populations in areas with dense populations of wild pigs. Wild pigs were responsible for depredating as many nests as the most frequently observed native nest-predator, depredating nearly 30% of nests. These results are contrary to previous reports that wild pigs are minor nest predators relative to native species e.g.^{28,53}, which leads us to

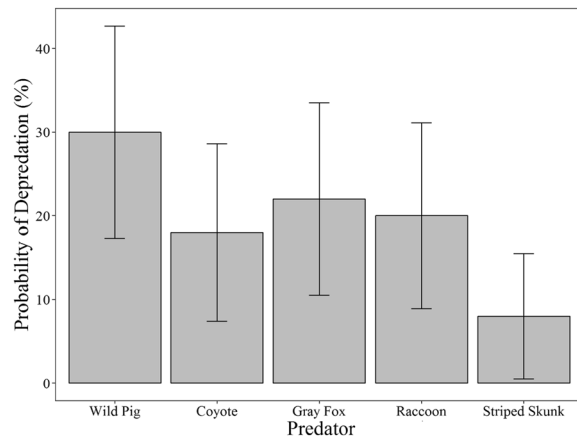


Figure 2. Predicted probability that a nest will be depredated by each species of nest predator in both primary and secondary depredation events with 95% confidence intervals for the 2016 wild turkey nesting period in Bexar County, Texas.

Treatment	Predator	No. nests depredated	Probability of Nest Depredation	LCL	UCL
Period					
Early	All Species	61	0.592*	0.495	0.683
	Wild Pigs	4	0.182	0.07	0.396
	Male	2	0.091	0.023	0.300
	Female	2	0.091	0.023	0.300
Peak	All Species	198	0.912*	0.867	0.943
	Wild Pigs	7	0.368	0.187	0.597
	Male	4	0.21	0.081	0.446
	Female	3	0.158	0.052	0.392
Late	All Species	40	0.625*	0.501	0.734
	Wild Pigs	1	0.091	0.013	0.483
	Male	0	0	0	1.000
	Female	1	0.091	0.013	0.439
Density					
High	All Species	197	0.792	0.743	0.843
	Wild Pigs	9	0.3	0.164	0.483
	Male	6	0.200*	0.093	0.379
	Female	3	0.1	0.033	0.268
Moderate	All Species	102	0.745	0.665	0.811
	Wild Pigs	3	0.136	0.045	0.348
	Male	0	0.000*	0	1.000
	Female	3	0.136	0.045	0.348

Table 2. Number of nests depredated and predicted probability a nest would be depredated by any predator species, all invasive wild pigs, male wild pigs, and female wild pigs with the lower confidence level (LCL) and upper confidence level (UCL) for a 95% confidence interval for each period and density treatment in Bexar County, Texas during 2016. Probabilities include only initial predation. For each predator group, statistically distinct probabilities within a treatment are marked with an asterisk.

re-raise the question of whether depredation by wild pigs is additive to that observed by native predators. In the absence of wild pigs, depredation rates of non-artificial wild turkey eggs ranged widely from 18–65%^{54–56}, but were always lower than the 80% we observed with artificial eggs and a dense population of wild pigs present. For other ground nesting species (e.g., sea turtles), the addition of wild pigs with native predators did appear to produce additive nest predations^{57,58}. Wild pigs were also frequently the first species to visit the nests in our study, which could likely lead to nest abandonment even if not all eggs were destroyed. Therefore, we suggest that wild pigs may be causing additive nest failures for wild turkeys and more research is needed to test this hypothesis.

Wild turkey nests had substantially higher probabilities of predation by male wild pigs in areas with higher nest densities. This could be indicative of males showing an adaptive response to the pulsed resources of nests, similar to nest depredation behaviors reported in other studies e.g.^{15,18,57}. Wild pigs are known to exploit seasonal

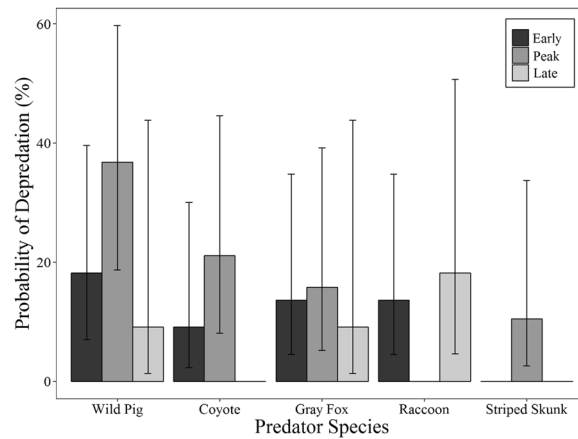


Figure 3. Predicted probability that a nest will be depredated by each species of nest predator during each nesting period with 95% confidence intervals for the 2016 wild turkey nesting period in Bexar County, Texas.

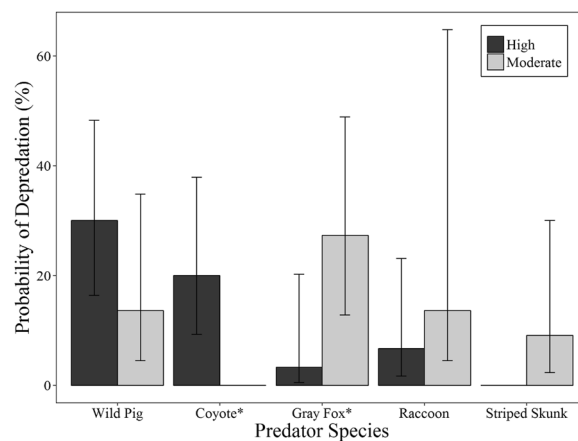


Figure 4. Predicted probability that a nest will be depredated by each predator species for each density treatment with 95% confidence intervals for the 2016 nesting period in Bexar County, Texas. For each species, an asterisk indicates a significant ($P < 0.05$) difference between nest densities.

resources, such as ground nests, as those resources become available^{59,60}. However, male wild pigs also moved farther distances and had larger home ranges than females in this study area^{61,62}, suggesting that males could have discovered more nests randomly during their increased movements.

Female wild pigs did not appear to increase predation pressure on nests seasonally or in response to increased nest density. Our attempt to mimic natural wild turkey nesting behaviors, by dynamically adjusting nest densities throughout nesting periods, may have reduced our ability to detect responses to either variable. However, our results corroborate similar findings that wild pigs did not actively seek nests regardless of nest density or period²³, therefore we do not expect this was the case. More research on the behaviors of wild pigs is needed to conclude whether males exhibited an adaptive response to wild turkey nests, and females did not.

Our results paired with previous studies establish that wild pigs fulfill three detrimental roles for wild turkeys (i.e., consume nests, compete for resources, and alter habitat), and have the potential to reduce turkey populations^{11,13,63,64}. Wild turkeys are not the only ground-nesting species susceptible to nest depredation by wild pigs e.g.^{15,18,57}, particularly as the range of wild pigs continues to expand throughout the US and worldwide. For example, Snow, *et al.*⁹ predicts that wild pigs have a high propensity to invade portions of the nesting range of a number of sensitive species including piping plovers (*Charadrius melodus*), greater sage-grouse (*Centrocercus urophasianus*), and northern pintails (*Anas acuta*)^{65–67}. Additionally, long-term studies of various North American turtle species indicate that additive mortality of as little as 3% may result in population decline, suggesting turtles may be highly sensitive to depredation by wild pigs^{68,69}. Halting the range expansion of wild pigs may be essential to the conservation of a variety of ground-nesting species.

While coyotes and gray foxes appeared to respond to our density treatments, this relationship is complicated by predator interactions between coyotes and gray foxes which can result in avoidance by gray foxes⁷⁰. To our knowledge, there is no evidence that wild pigs avoid interactions with other nest predators, thus we did not expect that predator interactions impacted the observed probability a nest would be depredated by wild pigs. Contrarily,

if other predators practiced avoidance in response to wild pigs, this could lower the overall depredation rate for wild turkey nests. Avoidance of wild pigs by other nest predators could also introduce bias in nest studies that only monitor nests in areas where wild pigs are known to be active. However, as wild pigs are ubiquitous throughout our study site, we believe our results accurately depict the potential impact of wild pigs on wild turkey nest success where wild pig density is high.

It is important to note that this study utilized simulated turkey nests. While simulated nest studies have shown depredation rates similar to natural turkey nests³⁴, it is difficult to draw concrete conclusions regarding predation rates in the absence of the hen³². The presence of hens has increased predations at nests because the hen can be prey itself³⁴, resulting in nest failure. In addition, the use of surrogate eggs could have led to eggs rotting over time and becoming more detectable, although we found no evidence that this increased detection by wild pigs. Contrarily, we found that probabilities of depredation decreased through time. It is unclear why this relationship existed, but we suspect it was related to some nests being placed in locations that were randomly less detectable by nest predators, despite our best attempts to place all nests equally within turkey nesting habitat. The relationship was likely not related to diminishing human disturbance through time because each nest was revisited once per week. It was also not related to changes in densities of available nests because we replaced any depredated nests with new nests, therefore keeping densities consistent. Ultimately, the use of simulated nests allowed us to evaluate the influence of treatment of nesting densities and periods, which would not have been feasible using natural nests e.g.³⁵.

Conclusions

Invasion of wild pigs into new regions may result in increased nest mortalities for wild turkeys, thus curtailing the expansion of wild pigs is highly important for protecting wild turkeys and other ground-nesting species. Efforts to protect wild turkeys by controlling wild pigs should occur immediately prior to nesting period. Determining whether nest depredation by wild pigs is additive relative to native nest predators represents an important line of future research. Further investigation of potential behavioral responses of male wild pigs to increased availability of nests are also needed to understand the impact of wild pigs on reproductive success of wild turkeys.

Data availability

The datasets generated during and/or analyzed during the current study are available from the corresponding author on reasonable request.

Received: 19 December 2019; Accepted: 30 January 2020;

Published online: 14 February 2020

References

- Vitense, K., Wirsing, A. J., Tyson, R. C. & Anderson, J. J. Theoretical impacts of habitat loss and generalist predation on predator-prey cycles. *Ecological Modelling* **327**, 85–94 (2016).
- Mooney, H. A. & Cleland, E. E. The evolutionary impact of invasive species. *Proceedings of the National Academy of Sciences* **98**, 5446–5451 (2001).
- Keiter, D. A., Mayer, J. J. & Beasley, J. C. What is in a “common” name? A call for consistent terminology for nonnative *Sus scrofa*. *Wildlife Society Bulletin* **40**, 384–387 (2016).
- Barrios-Garcia, M. N. & Ballari, S. A. Impact of wild boar (*Sus scrofa*) in its introduced and native range: a review. *Biological Invasions* **14**, 2283–2300 (2012).
- Mayer, J. J. & Brisbin, I. L. *Wild pigs in the United States: Their History, Comparative Morphology, and Current Status*. (University of Georgia Press, 2008).
- Corn, J. L. & Jordan, T. R. Development of the national feral swine map, 1982–2016. *Wildlife Society Bulletin* **41**, 758–763 (2017).
- Gipson, P. S., Hlavachick, B. & Berger, T. Range expansion by wild hogs across the central United States. *Wildlife Society Bulletin* **26**, 279–286 (1998).
- McClure, M. L. *et al.* Modeling and mapping the probability of occurrence of invasive wild pigs across the contiguous United States. *PLoS One* **10**, e0133771 (2015).
- Snow, N. P., Jarzyna, M. A. & VerCauteren, K. C. Interpreting and predicting the spread of invasive wild pigs. *Journal of Applied Ecology* **54**, 2022–2032, <https://doi.org/10.1111/1365-2664.12866> (2017).
- Timmons, J. B. *et al.* Feral hog population growth, density and harvest in Texas. *Texas A&M AgriLife Extension Service Report*. (Texas A&M University: College Station, TX.) **Report no. SP-472** (2012).
- Ditchkoff, S. S. & Mayer, J. J. In *Wild pigs: biology, damage, control techniques, and management*. *Savanna River National Laboratory, Aiken, SC, USA* (eds Mayer, J. J. & Brisbin, I. L.) 105–143 (2009).
- Lacki, M. J. & Lancia, R. A. Effects of wild pigs on beech growth in Great Smoky Mountains National Park. *Journal of Wildlife Management* **50**, 655–659 (1986).
- Singer, F. J., Swank, W. T. & Clebsch, E. E. Effects of wild pig rooting in a deciduous forest. *Journal of Wildlife Management* **48**, 464–473 (1984).
- Taylor, R. B. & Hellgren, E. C. Diet of feral hogs in the western South Texas Plains. *The Southwestern Naturalist* **42**, 33–39 (1997).
- Challies, C. N. Feral pigs (*Sus scrofa*) on Auckland Island: status, and effects on vegetation and nesting sea birds. *New Zealand Journal of Zoology* **2**, 479–490 (1975).
- Elsey, R. M., Mouton, E. C. & Kinler, N. Effects of feral swine (*Sus scrofa*) on alligator (*Alligator mississippiensis*) nests in Louisiana. *Southeastern Naturalist* **11**, 205–218 (2012).
- Stegeman, L. C. The European wild boar in the Cherokee national forest, Tennessee. *Journal of Mammalogy* **19**, 279–290 (1938).
- Tolleson, D., Rollins, D., Pinchak, W., Ivy, M. & Hierman, A. Impact of feral hogs on ground-nesting gamebirds. *A compendium for resource managers* (Hanselka, C. W. & Cadenhead, J. F., eds.). *Texas Agricultural Extension Service, San Angel, USA*, 76–83 (1993).
- Sherry, T. W., Wilson, S., Hunter, S. & Holmes, R. T. Impacts of nest predators and weather on reproductive success and population limitation in a long-distance migratory songbird. *Journal of Avian Biology* **46**, 559–569 (2015).
- Thogmartin, W. E. & Schaeffer, B. A. Landscape attributes associated with mortality events of wild turkeys in Arkansas. *Wildlife Society Bulletin* **28**, 865–874 (2000).
- Vangilder, L. D. & Kurzejeski, E. W. Population ecology of the eastern wild turkey in northern Missouri. *Wildlife Monographs* **130**, 1–50 (1995).
- Wood, G. W. & Barrett, R. H. Status of wild pigs in the United States. *Wildlife Society Bulletin* **7**, 237–246 (1979).

23. Sanders, H. N., Hewitt, D. G., Perotto-Baldivieso, H. L., VerCauteren, K. C. & Snow, N. P. Opportunistic predation of wild turkey nests by wild pigs. *Journal of Wildlife Management* **84**, 293–300 (2019).
24. Dreibelbis, J. *et al.* Vol. 10 235–242 (Proceedings of the National Wild Turkey Symposium, 2011).
25. Dickson, J. G. *The wild turkey: biology and management.* (Stackpole Books, 1992).
26. Tapley, J. L., Kennamer, J. E. & Abernethy, R. K. Status and distribution of the wild turkey in 2004. *Proceedings of the Ninth National Wild Turkey Symposium* **9**, 21–31 (2005).
27. National Wild Turkey Federation. The 2003 economic contributions of spring turkey hunting. *Southwick Associates, Fernandina Beach, Florida, USA* (2003).
28. Dreibelbis, J. Z. *et al.* Predation of Rio Grande wild turkey nests on the Edwards Plateau, Texas. *The Wilson Journal of Ornithology* **120**, 906–911 (2008).
29. Fletcher, K., Aebischer, N. J., Baines, D., Foster, R. & Hoodless, A. N. Changes in breeding success and abundance of ground-nesting moorland birds in relation to the experimental deployment of legal predator control. *Journal of Applied Ecology* **47**, 263–272 (2010).
30. Schmidt, K. A. & Whelan, C. J. Nest predation on woodland songbirds: When is nest predation density dependent? *Oikos* **87**, 65–74 (1999).
31. Petty, B. D. *et al.* Effects of feral hog control on nest fate of eastern wild turkey in the post oak savannah of Texas. *Proceedings of the National Wild Turkey Symposium* **9**, 169–172 (2005).
32. Mezquida, E. T. & Marone, L. Are results of artificial nest experiments a valid indicator of success of natural nests? *The Wilson Bulletin* **115**, 270–276 (2003).
33. Wilson, G. R., Brittingham, M. C. & Goodrich, L. J. How well do artificial nests estimate success of real nests? *The Condor* **100**, 357–364 (1998).
34. Hernandez, F., Henke, S. E., Silvy, N. J. & Rollins, D. Comparison of success between actual northern bobwhite and wild turkey nests and simulated nests. *Wildlife Society Bulletin* **29**, 1212–1218 (2001).
35. Hewitt, D. G. & Kirkpatrick, R. L. Ground nest predation and ruffed grouse densities in southwest Virginia. *The Wilson Bulletin* **105**, 521–524 (1993).
36. Gould, F. Texas plants-a checklist and ecological summary. MP-585/Revised. *Tex. Agr. Exp. Sta. Texas A&M Univ., College Station* (1975).
37. Hudler, D. B. Modeling paleolandscapes in central Texas. *Dissertation, University of Texas, Austin, USA* (2000).
38. Wills, F. H. Historic vegetation of Camp Bullis and Camp Stanley, southeastern Edwards Plateau, Texas. *Texas Journal of science* **58**, 219–230 (2006).
39. Snow, N. P. *et al.* Exposure of a Population of Invasive Wild Pigs to Simulated Toxic Bait containing Biomarker: Implications for Population Reduction. *Pest Management Science* **75**, 1140–1149 (2019).
40. Sweitzer, R. A. *et al.* Immobilization and physiological parameters associated with chemical restraint of wild pigs with Telazol® and xylazine hydrochloride. *Journal of wildlife diseases* **33**, 198–205 (1997).
41. Calenge, C. The package adehabitat for the R software: a tool for the analysis of space and habitat use by animals. *Ecological modelling* **197**, 516–519 (2006).
42. Mohr, C. O. Table of equivalent populations of North American small mammals. *The American Midland Naturalist* **37**, 223–249 (1947).
43. Walter, W. & Fischer, J. Manual of applied spatial ecology. *State College, PA: Pennsylvania State University* (2016).
44. Dreibelbis, J. Z. *Nesting ecology of Rio Grande wild turkeys in the Edwards Plateau of Texas*, MS Thesis, Texas A&M University, (2008).
45. Perotto Baldivieso, H. L. *GIS-based multiple scale study of Rio Grande wild turkey habitat in the Edwards Plateau of Texas*, PhD Dissertation, Texas A&M University (2005).
46. McGarigal, K., Cushman, S. A. & Ene, E. FRAGSTATS v4: spatial pattern analysis program for categorical and continuous maps. *University of Massachusetts, Amherst, MA, USA* (2012).
47. Beasom, S. L. Turkey productivity in two vegetative communities in south Texas. *Journal of Wildlife Management* **34**, 166–175 (1970).
48. Collier, B. A. *et al.* Variation in brood sex ratios of Texas Rio Grande wild turkeys. *Journal of Wildlife Management* **71**, 1793–1799 (2007).
49. Keegan, T. W. & Crawford, J. A. Renesting by Rio Grande wild turkeys after brood loss. *Journal of Wildlife Management* **57**, 801–804 (1993).
50. Hernandez, F., Rollins, D. & Cantu, R. Evaluating evidence to identify ground-nest predators in west Texas. *Wildlife Society Bulletin* **25**, 826–831 (1997).
51. Richardson, T. W., Gardali, T. & Jenkins, S. H. Review and meta-analysis of camera effects on avian nest success. *The Journal of Wildlife Management* **73**, 287–293 (2009).
52. Conner, L. M., Rutledge, J. C. & Smith, L. L. Effects of mesopredators on nest survival of shrub-nesting songbirds. *The Journal of Wildlife Management* **74**, 73–80 (2010).
53. Henry, V. G. Predation on dummy nests of ground-nesting birds in the southern Appalachians. *Journal of Wildlife Management* **33**, 169–172 (1969).
54. Vander Haegen, W. M., Dodge, W. E. & Sayre, M. W. Factors affecting productivity in a northern wild turkey population. *Journal of Wildlife Management* **52**, 127–133 (1988).
55. Vangilder, L. D., Kurzejeski, E. W., Kimmel-Truitt, V. L. & Lewis, J. B. Reproductive parameters of wild turkey hens in north Missouri. *Journal of wildlife management* **51**, 535–540 (1987).
56. Melville, H. I., Conway, W. C., Morrison, M. L., Comer, C. E. & Hardin, J. B. Artificial nests identify possible nest predators of eastern wild turkeys. *Southeastern Naturalist* **13**, 80–92 (2014).
57. Engeman, R. M., Addison, D. & Griffin, J. Defending against disparate marine turtle nest predators: nesting success benefits from eradicating invasive feral swine and caging nests from raccoons. *Oryx* **50**, 289–295 (2016).
58. Engeman, R. M. *et al.* Dramatic and immediate improvements in insular nesting success for threatened sea turtles and shorebirds following predator management. *Journal of Experimental Marine Biology and Ecology* **395**, 147–152 (2010).
59. Schley, L. & Roper, T. J. Diet of wild boar *Sus scrofa* in Western Europe, with particular reference to consumption of agricultural crops. *Mammal review* **33**, 43–56 (2003).
60. Ballari, S. A. & Barrios-García, M. N. A review of wild boar *Sus scrofa* diet and factors affecting food selection in native and introduced ranges. *Mammal Review* **44**, 124–134 (2014).
61. Lavelle, M. J. *et al.* Evaluation of movement behaviors to inform toxic baiting strategies for invasive wild pigs (*Sus scrofa*). *Pest Management Science* **74**, 2504–2510 (2018).
62. Snow, N. P. & VerCauteren, K. C. Movement responses inform effectiveness and consequences of baiting wild pigs for population control. *Crop Protection* **124**, 104835 (2019).
63. Crome, F. H. & Moore, L. Cassowaries in North-Eastern Queensland-Report of a survey and a review and assessment of their status and conservation and management needs. *Wildlife Research* **17**, 369–385 (1990).
64. Norman, G. W. & Steffen, D. E. Effects of recruitment, oak mast, and fall-season format on wild turkey harvest rates in Virginia. *Wildlife Society Bulletin* **31**, 553–559 (2003).
65. Aldridge, C. L. *et al.* Range-wide patterns of greater sage-grouse persistence. *Diversity and Distributions* **14**, 983–994 (2008).
66. Ivan, J. S. & Murphy, R. K. What preys on piping plover eggs and chicks? *Wildlife Society Bulletin* **33**, 113–119 (2005).

67. Rice, M. B., Haukos, D. A., Dubovsky, J. A. & Runge, M. C. Continental survival and recovery rates of northern pintails using band-recovery data. *Journal of Wildlife Management* **74**, 778–787 (2010).
68. Congdon, J. D., Dunham, A. E. & Sels, R. V. L. Demographics of common snapping turtles (*Chelydra serpentina*): implications for conservation and management of long-lived organisms. *American Zoologist* **34**, 397–408 (1994).
69. Doroff, A. M. & Keith, L. B. Demography and ecology of an ornate box turtle (*Terrapene ornata*) population in south-central Wisconsin. *Copeia* **1990**, 387–399 (1990).
70. Atwood, T. C., Fry, T. L. & Leland, B. R. Partitioning of anthropogenic watering sites by desert carnivores. *Journal of Wildlife Management* **75**, 1609–1615 (2011).

Acknowledgements

We would like to thank C. Blass, J. Halseth, M. Hewitt, C. Kholer, A. Killam, M. Lavelle, M. Matticola, M. Sveine, and E. VanNatta for assistance with data collection. D. Nolte and M. Bodenchuck were instrumental in early discussions and development of this study. We are grateful for logistical support provided by B. Friesenhahn, S. Carasco, and R. Tabor from Joint Base San Antonio Camp Bullis, Guadalupe River State Park, Texas Wildlife Services, the National Wildlife Research Center, and the Caesar Kleberg Wildlife Research Institute at Texas A&M University-Kingsville. We appreciate manuscript edits from M. Garrick. Eggs for nest construction were donated by Cal-Maine Foods, Inc. Mention of commercial products or companies does not represent an endorsement by the US government. Financial support was provided by the United States Department of Agriculture, Animal and Plant Health Inspection Service, Wildlife Services (16-7100-0363-CA), and the Houston Safari Club.

Author contributions

H.N.S. and N.P.S. contributed to the study design, data collection, analysis, interpretation, and writing of the manuscript. D.G.H., H.L.P. and K.C.V. contributed to the study design and writing of the manuscript.

Competing interests

The authors declare no competing interests.

Additional information

Correspondence and requests for materials should be addressed to N.P.S.

Reprints and permissions information is available at www.nature.com/reprints.

Publisher's note Springer Nature remains neutral with regard to jurisdictional claims in published maps and institutional affiliations.



Open Access This article is licensed under a Creative Commons Attribution 4.0 International License, which permits use, sharing, adaptation, distribution and reproduction in any medium or format, as long as you give appropriate credit to the original author(s) and the source, provide a link to the Creative Commons license, and indicate if changes were made. The images or other third party material in this article are included in the article's Creative Commons license, unless indicated otherwise in a credit line to the material. If material is not included in the article's Creative Commons license and your intended use is not permitted by statutory regulation or exceeds the permitted use, you will need to obtain permission directly from the copyright holder. To view a copy of this license, visit <http://creativecommons.org/licenses/by/4.0/>.

© The Author(s) 2020