

LETTER • OPEN ACCESS

## Potential hydrologic changes in the Amazon by the end of the 21st century and the groundwater buffer

To cite this article: Yadu N Pokhrel *et al* 2014 *Environ. Res. Lett.* **9** 084004

View the [article online](#) for updates and enhancements.

### Related content

- [The Guiana Shield rainforests—overlooked guardians of South American climate](#)  
C Isabella Bovolenta, Thomas Wagner, Geoff Parkin *et al.*
- [Higher absorbed solar radiation partly offset the negative effects of water stress on the photosynthesis of Amazon forests during the 2015 drought](#)  
Xing Li, Jingfeng Xiao and Binbin He
- [Impacts of land use on climate and ecosystem productivity over the Amazon and the South American continent](#)  
M Wu, G Schurgers, A Ahlström *et al.*

### Recent citations

- [Multi-decadal hydrologic change and variability in the Amazon River basin: understanding terrestrial water storage variations and drought characteristics](#)  
Suyog Chaudhari *et al.*
- [Caracterização dos Diferentes Tipos de El Niño e seus Impactos na América do Sul a Partir de Dados Observados e Modelados](#)  
Juarez Viegas *et al.*
- [High-Resolution Modeling of Reservoir Release and Storage Dynamics at the Continental Scale](#)  
Sanghoon Shin *et al.*

# Potential hydrologic changes in the Amazon by the end of the 21st century and the groundwater buffer

Yadu N Pokhrel<sup>1</sup>, Ying Fan<sup>1</sup> and Gonzalo Miguez-Macho<sup>2</sup>

<sup>1</sup>Department of Earth and Planetary Sciences, Rutgers University, New Brunswick, NJ 08854, USA

<sup>2</sup>Non-Linear Physics Group, Faculty of Physics 15782, Universidade de Santiago de Compostela, Galicia, Spain

E-mail: [yadupokhrel@eps.rutgers.edu](mailto:yadupokhrel@eps.rutgers.edu)


Received 22 April 2014, revised 30 June 2014

Accepted for publication 10 July 2014

Published 7 August 2014

## Abstract

This study contributes to the discussions on the future of the Amazon rainforest under a projected warmer-drier climate from the perspectives of land hydrology. Using IPCC HadGEM2-ES simulations of the present and future Amazon climate to drive a land hydrology model that accounts for groundwater constraint on land drainage, we assess potential hydrologic changes in soil water, evapotranspiration (ET), water table depth, and river discharge, assuming unchanged vegetation. We ask: how will ET regimes shift at the end of the 21st century, and will the groundwater help buffer the anticipated water stress in some places-times? We conducted four 10 yr model simulations, at the end of 20th and 21st century, with and without the groundwater. Our model results suggest that, first, over the western and central Amazon, ET will increase due to increased potential evapotranspiration (PET) with warmer temperatures, despite a decrease in soil water; that is, ET will remain PET or atmospheric demand-limited. Second, in the eastern Amazon dry season, ET will decrease in response to decreasing soil water, despite increasing PET demand; that is, ET in these regions-seasons will remain or become more soil water or supply-limited. Third, the area of water-limited regions will likely expand in the eastern Amazonia, with the dry season, as indicated by soil water store, even drier and longer. Fourth, river discharge will be significantly reduced over the entire Amazon but particularly so in the southeastern Amazon. By contrasting model results with and without the groundwater, we found that the slow soil drainage constrained by shallow groundwater can buffer soil water stress, particularly in southeastern Amazon dry season. Our model suggests that, if groundwater buffering effect is accounted for, the future Amazon water stress may be less than that projected by most climate models.

 Online supplementary data available from [stacks.iop.org/ERL/9/084004/mmedia](http://stacks.iop.org/ERL/9/084004/mmedia)

Keywords: Amazon rainforest, IPCC climate change, evapotranspiration, moisture stress, modeling, groundwater buffer, ecosystem resilience

## 1. Introduction

The question of how the extensive rainforests in the Amazon River basin will fare under a changing climate has been a topic of great concern (Shukla *et al* 1990, Nobre *et al* 1991, Cook and Vizy 2008, Cox *et al* 2004, Nepstad *et al* 2008, Cook *et al* 2012, Malhi *et al* 2008, 2009, Huntingford *et al* 2004, 2008). The Amazon, with a total area of



Content from this work may be used under the terms of the Creative Commons Attribution 3.0 licence. Any further distribution of this work must maintain attribution to the author(s) and the title of the work, journal citation and DOI.

~5.4 million km<sup>2</sup>, is the largest river basin in the world. It holds the world's largest stand of tropical rainforest, provides home to about one quarter of all terrestrial species on earth (Malhi *et al* 2008), and accounts for ~15% of global terrestrial photosynthesis (Field *et al* 1998, Malhi *et al* 2008). Moreover, evapotranspiration (ET) from the forests is an important driver of global atmospheric circulation (IPCC 2007, Nepstad *et al* 2008, Malhi *et al* 2008, Choudhury *et al* 1998), and the enormous river flow accounts for ~20% of the total terrestrial freshwater discharge into the world oceans (Nepstad *et al* 2008). Therefore, the Amazonian forests are an important component of the global terrestrial ecosystem and the climate system (Nobre *et al* 1991, Cox *et al* 2004, Betts *et al* 2004).

Studies have indicated that changes in forest dynamics due to global climate change could threaten the ecological services provided by the forests (Nepstad *et al* 2008, Davidson *et al* 2012, Cook and Vizy 2008). In particular, dynamic vegetation models driven by general circulation models (GCMs) suggest that present-day rainforests in the Amazon will be largely replaced by savannah-like vegetation (e.g., Cook and Vizy 2008, Betts *et al* 2004, Cox *et al* 2000, 2004, Huntingford *et al* 2004, Malhi *et al* 2008, Salazar *et al* 2007). But the issue of widespread forest dieback in the Amazon (Cox *et al* 2000, 2004, Oyama and Nobre 2003, Nobre *et al* 1991, Huntingford *et al* 2004, 2008, Walker *et al* 2009) has generated considerable interest as well as controversy in climate and carbon cycle modeling communities and is still under debate (Cook *et al* 2012).

One of the key mechanisms causing the dieback is the increasing moisture stress associated with projected drying (increased temperature but reduced precipitation) particularly in the eastern and southeastern Amazonia (e.g., Cox *et al* 2004, Li *et al* 2006, Cook *et al* 2012, Malhi *et al* 2009). The Amazon is one of the major hotspots that may experience warmer but drier dry seasons (Diffenbaugh and Giorgi 2012); based on the previous version of the Hadley Center GCM (HadCM3LC) studies (e.g., Cox *et al* 2004) have suggested that most of the Amazon will get 8–10 K warmer by the end of the 21st century. Cox *et al* (2004) suggest that warming will generally lead to temperatures above the optimum for photosynthesis; the higher temperatures combined with substantial decrease in precipitation could reduce ET (e.g., Li *et al* 2006) resulting in less vegetation growth and decreased biomass even though there are also other factors that contribute to such vegetation carbon reduction mechanism under higher temperatures (Galbraith *et al* 2010). It is also suggested that the drying-up and dieback are further exacerbated when vegetation feedbacks are represented in the model (Cox *et al* 2004, Huntingford *et al* 2004). However, projected future changes in soil moisture in the Amazon vary among different GCMs not only in the magnitude but also in the direction, leading to wide ranging changes in ET (Li *et al* 2006). In a recent study, Good *et al* (2013) found that the latest Hadley Center model (HadGEM2-ES) simulates significantly lesser forest dieback compared to its earlier version (HadCM3LC) but they cautioned that the issue of dieback cannot be completely ruled out and remains as a possible

scenario of dangerous changes that requires further understanding. Thus, it is still a standing issue as to what extent soil moisture will decrease in response to changes in future climate, and whether it will limit ET and primary production, and lead to fundamental ecosystem shifts.

Increased frequency of extreme events such as long dry-spells and droughts during the past decades (Saleska *et al* 2007, Lewis *et al* 2011) and increased dry-season length (Fu *et al* 2013, Good *et al* 2013) can worsen plant water stress and further threaten the sustainability of the forests (Nepstad *et al* 2008, Malhi *et al* 2009). But it is not clear how susceptible the forests are to such droughts in terms of biomass loss during dry episodes because studies have found that the Amazon forests greened-up during the 2005 drought (Huete *et al* 2006, Saleska *et al* 2007) as a result of increased dry-season sunlight which enhances photosynthesis, suggesting that water may not be limiting as trees tap water from deep soil layers (Saleska *et al* 2007). Even though the idea remains controversial and calls for further investigation (Samanta *et al* 2010, Tollefson 2010), it is recognized that trees can tap deep water during such dry episodes (Nepstad *et al* 1994, Hodnett *et al* 1995, Bruno *et al* 2006, Jipp *et al* 1998, Oliveira *et al* 2005, Juárez *et al* 2007).

While the forest dynamics and the fate of the Amazon remain poorly understood (Malhi *et al* 2008, 2009, Phillips *et al* 2009), climate models indicate that moisture stress will be a dominant feature, particularly in the southern and eastern parts (Phillips *et al* 2009, Malhi *et al* 2008). However, the climate models used for future projections treat soil water rather simplistically; soil column is 2–3 m deep and freely drained. It has been suggested that these GCMs tend to overestimate soil water stress (Hasler and Avissar 2007). In fact, most GCMs have the tendency to produce seasonal ET cycle in phase with the seasonal rainfall cycle (see Werth and Avissar 2004) while flux observations and observation-based estimates indicate that ET is not reduced in the dry season over most of the Amazon (e.g., Shuttleworth 1988, Juárez *et al* 2007, da Rocha *et al* 2009). The implication of improving land hydrology in GCMs to understanding climate dynamics is further highlighted in a recent study where moisture stress reduction by improving root zone biophysics in a GCM increased precipitation through enhanced moisture recycling and dampened drought intensity during dry seasons in the Amazon (Harper *et al* 2014).

Our recent synthesis of observations and modeling studies suggest that the groundwater reservoir may play an important role in buffering Amazon soil and surface water stores through the multi-month dry season under present-day climate (Fan and Miguez-Macho 2010, Miguez-Macho and Fan 2012a, 2012b, Pokhrel *et al* 2013). We found that groundwater is within the top meters of land surface over large regions of the Amazon, which impedes wet-season drainage leading to large soil water stores before the dry season arrives; the shallow groundwater also maintains upward capillary flux to the root zone supporting ET in the dry season; in southeastern Amazonia where the water table is deep (>20 m) under the plateaus, there is a multi-month delay between peak rainy season and peak water table height, the

latter drains to the valleys in the dry season and supports valley ecosystems (e.g., gallery forests). These groundwater buffering effects have been widely observed across the Amazon (see review in Miguez-Macho and Fan 2012a, 2012b), and our modeling studies attempted to assess their basin-wide importance.

In this study, we explore whether the groundwater buffering effect under the present climate can help reduce the anticipated water stress under the future climate projected by IPCC (Intergovernmental Panel on Climate Change) climate model simulations for the end of the 21st century. We report our results in two steps. First, using a model that includes the groundwater, we explore the hydrologic response to the future climate, esp. changes in ET and in the controls of ET (atmospheric demand versus soil water supply). Second, we compare the results with those from a model disabling the groundwater and letting soil water drain freely; the latter is a common approach in models used in the future Amazon studies mentioned earlier. This will allow us to isolate the groundwater effect. We seek answers to the following questions: What are the likely hydrologic responses to the projected changes in precipitation and temperature? Where and when will significant soil moisture stress most likely occur across the Amazon? Will there be regime shifts in ET control, e.g., from demand-limited to supply-limited, in parts of the Amazon? And finally, can the groundwater buffering effect offer any relief to the projected water stress?

## 2. Methods

### 2.1. The land hydrology model

We use the coupled groundwater-surface water model LEAF-Hydro-Flood (LHF), described in detail in Miguez-Macho and Fan (2012a, 2012b), and briefly highlighted here. Figure S1 illustrates the key physical processes represented in LHF and the history of its development. The core is LEAF (Land Ecosystem-Atmosphere Feedback (Walko *et al* 2000)), the land model of RAMS (Regional Atmosphere Modeling System), color-coded orange. We developed LEAF-Hydro, color-coded blue, for studies of N. America (Fan *et al* 2007, Miguez-Macho *et al* 2007), by adding a prognostic groundwater store and allowing (1) the water table to rise and fall or the vadose zone to shrink or grow, (2) the water table, once recharged by soil drainage, to relax through discharge into rivers within a grid cell, and lateral groundwater flow among adjacent cells, leading to convergence to low valleys, (3) two-way exchange between groundwater and rivers depending on hydraulic difference and river-groundwater contact area, representing both losing (to groundwater) and gaining (draining groundwater) streams, (4) river routing to the ocean as kinematic waves, and (5) setting sea level as groundwater head boundary condition, hence allowing sea level to influence coastal drainage. In our recent studies over the Amazon (Miguez-Macho and Fan 2012a), we further developed LHF, color-coded green, by introducing a river-floodplain routing scheme that solves the full momentum equation of open

channel flow, taking into account the backwater effect (the diffusion term) (e.g., Yamazaki *et al* 2011) and the inertia of large water mass of deep flow (acceleration terms) (e.g., Bates *et al* 2010) that are important in the Amazon; this new module allows river discharge to be influenced by river stage downstream or the sea level, slowing down or even reversing flow locally as widely observed (Meade *et al* 1991). The model was tested with observed water table, river discharge, and seasonal flooding (Miguez-Macho and Fan 2012a), soil moisture and ET (Miguez-Macho and Fan 2012b), and terrestrial water storage (TWS) change using GRACE (Pokhrel *et al* 2013), over an 11 yr (2000–2010) simulation at 4 min time steps and 1 arc-min grids (~2 km), forced by ECMWF Reanalysis Interim Product (ERA-Interim).

### 2.2. Forcing data and simulation settings

Our earlier simulations were forced by ERA-Interim, which is close to observations so that the model can be validated. Here, to assess the likely hydrologic changes over the Amazon from the present to the end of the century, we use model simulated climate from the same GCM for both the present and the future. We use 3 hourly meteorological forcing from the Hadley Center climate model, the Global Environmental Model version 2 (HadGEM2-ES), for the IPCC fifth Assessment Report (AR5). The data are obtained from the archive of the Coupled Model Intercomparison Project phase 5 (CMIP5). We chose the Representative Concentration Pathways Scenario 8.5 (RCP8.5) leading to  $\sim 8.5 \text{ W m}^{-2}$  ( $\sim 940 \text{ ppm}$  of  $\text{CO}_2$ ) by the end of the 21st century (Moss *et al* 2010, Riahi *et al* 2011). We select two 10 yr time windows with available 3 hourly model output and about a century apart to represent the end of the 20th and 21st centuries, hereafter denoted as 20C and 21C, respectively. In the present study, we use a single GCM because it was not feasible to conduct multi-model simulations due to high computational demand of our hydrological model.

HadGEM2-ES was selected for several reasons. First, the Hadley Center models have been among the most accurate GCMs in simulating the present-day rainfall and temperature over the Amazonia (see Gedney *et al* 2000) because modeling climate change and impacts in this region has been a long-standing priority at the Met Office (Cox *et al* 2004). The recent versions of the Hadley model stand out amongst IPCC fourth assessment report (AR4) and AR5 models in accurately reproducing present-day climate in the Amazon for both dry and wet seasons (Li *et al* 2006, Yin *et al* 2013). Yin *et al* (2013) concluded that the HadGEM2-ES outperforms others especially for the surface conditions; it better captures the spatial distribution of rainfall over the Amazon than other models, which tend to significantly underestimate rainfall during the dry and transition seasons (JJA and SON). Cox *et al* (2004) noted that the model also reproduces the observed annual mean temperature over central Amazon remarkably well. Second, the use of Hadley Center model allows direct comparisons of our findings with previous studies on the Amazon forest dieback, most of which are based on the same model (e.g., Cox *et al* 2004, Betts *et al* 2004, Huntingford

*et al* 2004). Third, the HadGEM2-ES is one of the few GCMs that have archived sub-daily output in the CMIP5 database for time windows selected for this study; the sub-daily data are necessary for adequately modeling land hydrology.

Supplementary figure S2 compares modern-day spatial distribution of annual and seasonal precipitation from HadGEM2-ES with the observations (first column) from the Climate Research Unit (CRU). HadGEM2-ES captures the broad patterns of observed rainfall with certain over-estimation in regions, except for the northeast where the model has a dry bias particularly during wet seasons. To examine the temporal patterns, we compare the precipitation averaged over sub-basins of the Amazon (figure S3) with CRU and Global Precipitation Climatology Center (GPCC) data (figure S4). Over the Amazon upstream of Obidos gauging station, the model over-estimates precipitation particularly in the wet season due largely to the wet bias in the southwest (Madeira, Purus, and Solimoes). In the southeast (Tapajos, Tocantins, and Xingu) the model accurately simulates seasonal precipitation. This fact is important because this region already experiences dry-season water stress and is the center of most of the concerns over the future Amazon; that the Hadley model does reasonably well here at the present lends confidence to its future projections and the resulting hydrologic changes. The model also reproduces the general patterns of annual mean air temperature well but it has a general cold bias (figure S5) in the southern regions and the foothills of the Andes.

Model simulations are conducted over a 10 yr period near the end of the 20th and the 21st century respectively with typical ranges of wet and dry years (figure S6). To isolate groundwater effect, we use two model treatments, LHF with fully coupled groundwater (figure S1), and free drainage (FD) without groundwater allowing free gravity drain at the bottom of the 4 m soil column. This gives a total of four simulations hereafter referred to as LHF-20C, LHF-21C, FD-20C and FD-21C. Simulations are conducted at one arc-minute (~2 km) grids and 4 min time steps as in Miguez-Macho and Fan (2012a, 2012b). The coarse grid meteorological forcing data from HadGEM2-ES are interpolated into the land model grid and an altitude correction is applied based on local topography. To account for sea-level change, which is the lateral boundary condition for groundwater and river water surface elevation, we adjust the topography by the 0.62 m mean sea-level rise by the end of the 21st century projected by the IPCC-AR5 (Church *et al* 2013).

The 20C simulations were first initialized with the results from Miguez-Macho and Fan (2012a) forced by ERA-Interim. Because we use different forcing here, we spin up the model to reach a new equilibrium under the new climate by conducting repetitive runs for the year 1990. The water table depth (WTD) requires a longer time to spin up, and we manually accelerated grid cells with large adjustments. The 21C runs also require spin-up as the model climate shifted significantly over the century. We start at the end of the 20C results and run the model repetitively for the year 2090.

We note that the present-day vegetation, as described by Eva *et al* (2004), is assumed unchanged for the 21C

simulations. It is likely that vegetation will shift over the century in response to a warmer and drier climate, most likely toward more draught tolerant or avoidant species. The latter would in general transpire less with reduced need for tapping deep water stores (without changing rooting depth in models), and therefore our simulation assuming unchanged vegetation may over-estimate the groundwater buffering effect. On the other hand, the significant reduction in precipitation in northeastern Amazon as projected by HadGEM2-ES will likely cause a significant drop in the water table (>10 m), as confirmed later, making groundwater inaccessible regardless of model vegetation types. Since the extent and nature of vegetation shift is much debated, to keep the analysis simple and tractable we assume unchanged vegetation for the 21C runs.

### 2.3. Estimation of potential evapotranspiration

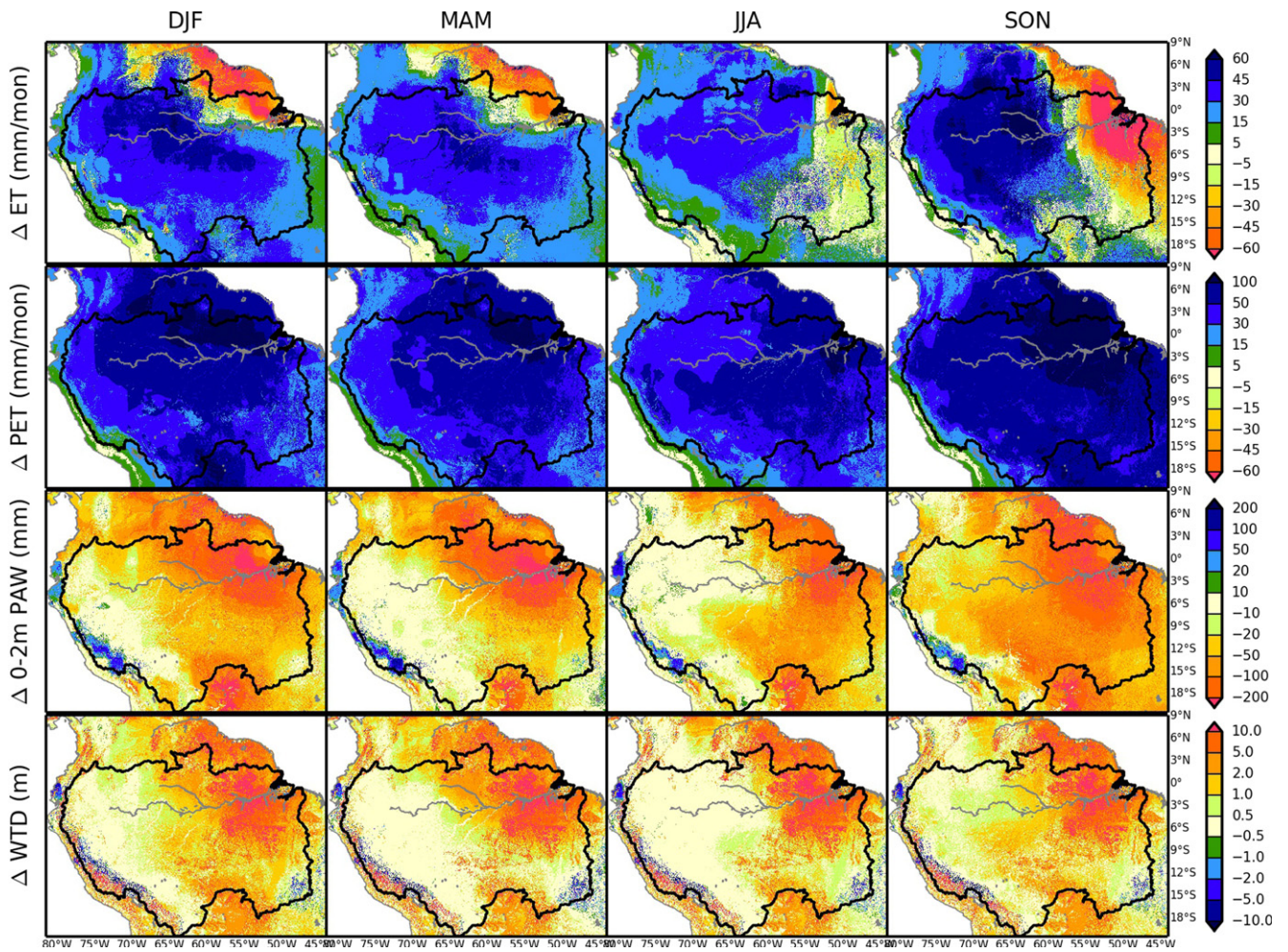
To understand the drivers of future ET changes, we separate ET control by atmospheric demand as quantified by potential evapotranspiration (PET) (Brutsaert 2005), from ET control by soil moisture supply. We estimate PET using the Penman–Monteith equation (Monteith 1965) at daily intervals which are then averaged to monthly values for use in the analysis. All meteorological input data are obtained as daily averages of the 3 hourly forcing used in this study. The ground heat flux is set as zero because it is negligible for daily time steps (Allen *et al* 1998). The resistance terms are estimated following the PET scheme in the VIC model (Liang *et al* 1994). The leaf area index and all necessary surface and vegetation parameters are the same as in LHF described in detail in Miguez-Macho and Fan (2012a).

## 3. Results

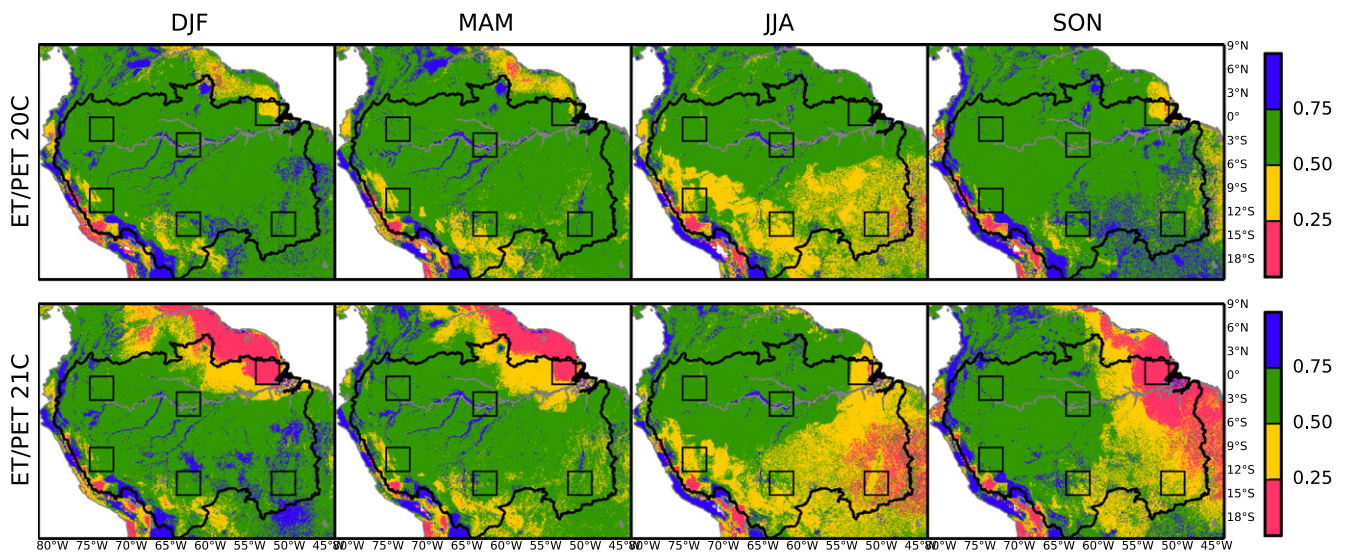
### 3.1. Evaluation of streamflow simulations

The model has been validated against observations in our earlier studies; Miguez-Macho and Fan (2012a) compared with observed daily streamflow at ten gauging stations, seasonal WTD at eight sites, and seasonal flood extent with satellite observations; Miguez-Macho and Fan (2012b) compared with observed plant available soil moisture at seven sites (multiple depths), and ET at six flux-tower sites across the Amazon; Pokhrel *et al* (2013) evaluated the TWS change with observations from the GRACE (Gravity Recovery and Climate Experiment) satellite at whole basin and sub-basin scales. These comparisons with observations of different hydrologic stores and fluxes at a range of scales suggested that the model well reproduces the spatial-temporal features of hydrologic fluxes and stores, but as expected the results are sensitive to the forcing, particularly precipitation; too much rain translates into too much river flow and ET, because no model parameters are tuned to match observations (Miguez-Macho and Fan 2012a, 2012b).

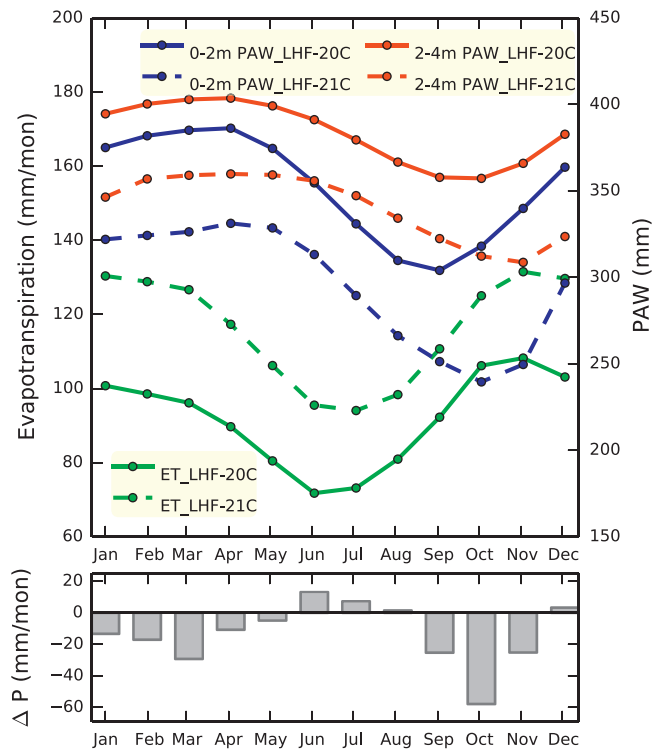
Since the climate forcing data used here is different than that in our previous studies, we briefly examine how the



**Figure 1.** Changes in LHF simulated seasonal evapotranspiration (ET), potential evapotranspiration (PET), 0–2 m plant available soil water (PAW), 2–4 m PAW and water table depth (WTD), calculated as the difference between the climatological mean for 21C (2090–2099) and 20C (1991–2000).



**Figure 2.** LHF simulated ET/PET ratio for 20C and 21C. Boxes indicate regions for time series in figure 4, which are denoted as NW, CE, NE (top 3 from left to right) and SW, SO, SE (bottom 3 from left to right).



**Figure 3.** Seasonal cycle of the climatological mean total ET and PAW averaged over the Amazon river basin from the 20C and 21C simulations using LHF. The bottom panel plots the changes in the climatological mean precipitation from HadGEM2-ES, also averaged over the Amazon.

model reproduces observed streamflow in the LHF-20C run. Figure S7 shows that the simulated daily streamflow agrees well with observations where the Hadley precipitation is accurate, but too high where the former is too high (compare with figure S4). Because our focus is hydrologic changes (differences) over the century, we expect that these biases will matter less to our results.

### 3.2. Hydrologic responses to changes in Amazon climate

Changes in the climate forcing over the century, particularly in seasonal precipitation and temperature as simulated by HadGEM2-ES, are shown in figure S8 (as 21C minus 20C). Precipitation changes vary among different regions and seasons; the northern and eastern regions are significantly drier throughout the year while the southern and western regions receive more rain during the austral summer and less during austral winter. Up to 8 K warmer temperatures are widespread particularly in Austral spring (SON). These large shifts in Amazon climate will likely result in significant shifts in land hydrology.

Figure 1 plots the changes in seasonal mean ET, PET, top 2 m plant available soil water (PAW), and WTD from LHF-20C to LHF-21C runs (full groundwater, 21C minus 20C). The sharp linear feature reflects the strong gradient in precipitation (increasing east to west) and wind field or drying power (decreasing east to west) over the region. It is simply the result of representing a steep, continuous gradient with a

few discrete color bins. We note the following. First, in southwestern Amazon, ET (first row) will increase in response to increased PET (second row) (due to higher temperatures), despite the reduced precipitation and drier soils (third row). This rise in ET in direct response to a rise in PET suggests that the ET in the western Amazon will remain PET or atmospheric-demand limited.

Second, in northeastern Amazon, and in southeastern Amazon dry season, ET will decrease in response to the much reduced precipitation and drier soils (third row), despite the higher PET demand (second row). This drop in ET in response to drops in soil water suggests that here, ET will remain or become more soil–water-supply limited.

Third, some regions may undergo a regime shift in terms of ET control. Figure 2 plots the ET/PET ratio, as a simple measure of relative importance of PET versus soil water control. When ET is less than 25% of PET (ratios of 0–0.25), soil water-limitation is strong and the areas belonging to this regime may expand by the end of 21 century. The same is true for the moderately water-limited regions (0.25–0.5 category), particularly in southeastern Amazon in the dry season.

Changes in soil-water limitation are further examined as seasonal time series in figures 3–4, as PAW in 0–2 m and 2–4 m soil depths and ET fluxes. Averaged over the Amazon (figure 3), mean monthly ET (green) shifted upward from ~92 mm to ~116 mm over the century, despite that PAW shifted downward in both shallow (blue) and deep (red) soil stores. That is, on the whole, Amazon ET remains limited by the atmospheric demand (PET), and the future rise in PET causes a direct rise in ET. However, there are substantial spatial variations across the Amazon. Figure 4 plots the same time series but over six 3° × 3° windows (location in figure 2). ET shifted upward in all regions except NE, which is the only case where ET shifts in the same direction as PAW (all downward) indicating stronger soil–water limitation.

Fourth, as evident in figure 4, across the Amazon, the amplitude of seasonal cycles in soil moisture and ET may become greater in 21C, largely due to a drier dry season. There is also a phase shift in the southeastern Amazon; the 21C (dashed lines) soil water continued to decline in September–October–November, pushing the minimum to a later time. These shifts have been anticipated based on studies of recent trends (e.g., Marengo *et al* 2011, Fu *et al* 2013).

Fifth, the water table may drop by as much as 10 m over the eastern Amazon (fourth row, figure 1, actual WTD shown in figure S9), which will directly translate into reduced river discharge in these regions, because little surface runoff occurs in the Amazon and the rivers are largely supplied by groundwater discharge (see review in Miguez-Macho and Fan 2012a). This is shown in figure 5 where we plot the mean seasonal discharge for 20C and 21C at the ten gauging stations in the Amazon (figure S3). Significant river flow reduction may be expected across the Amazon, but the worst reduction may be seen in the southeast (Tapajos and Xingu drainage) where more of the limited rain will go toward meeting the higher PET demand. These changes are summarized in table 1 as differences (mm) and % change.

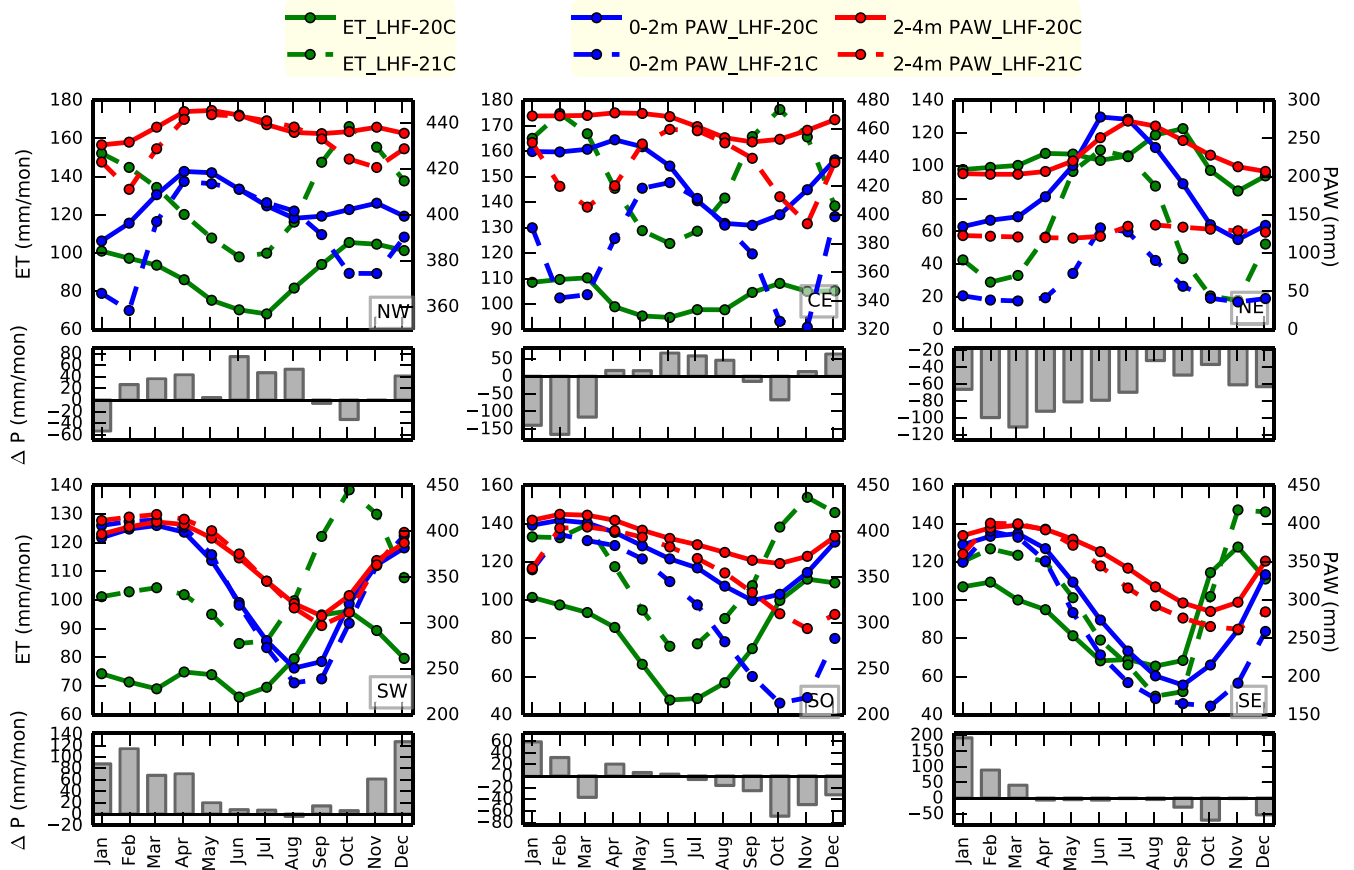


Figure 4. Same as in figure 3 but averaged over the six windows shown in figure 2.

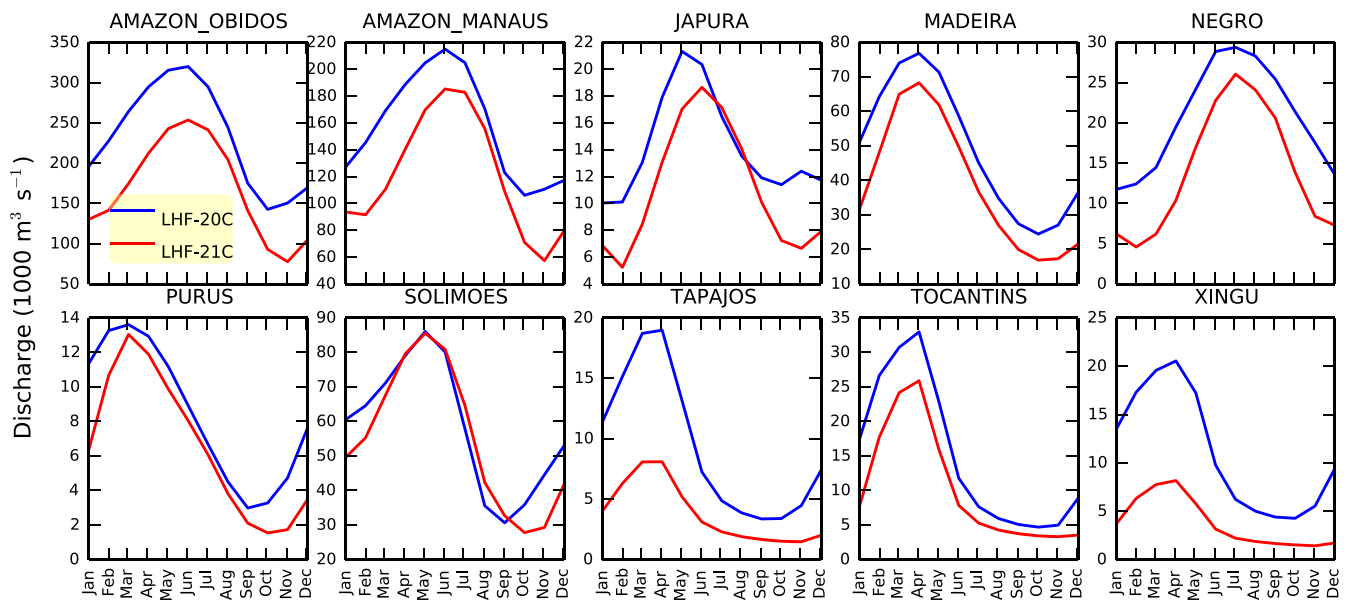


Figure 5. Simulated mean seasonal streamflow at the ten gaging stations in the Amazon shown in figure S3.

### 3.3. Potential groundwater buffering

We now explore whether the presence of a groundwater reservoir will make any difference to the simulated hydrologic response to future Amazon climate shifts. Groundwater response to climate forcing is known to be delayed and

dampened, and through multiple mechanisms it provides a notable buffering effect in the southeastern Amazon (Miguez-Macho and Fan 2012a, 2012b, Pokhrel *et al* 2013) where dry-season ET is water-limited under the present climate.

We contrast the results between LHF-21C (with groundwater) and FD-21C (without); the latter allows free soil



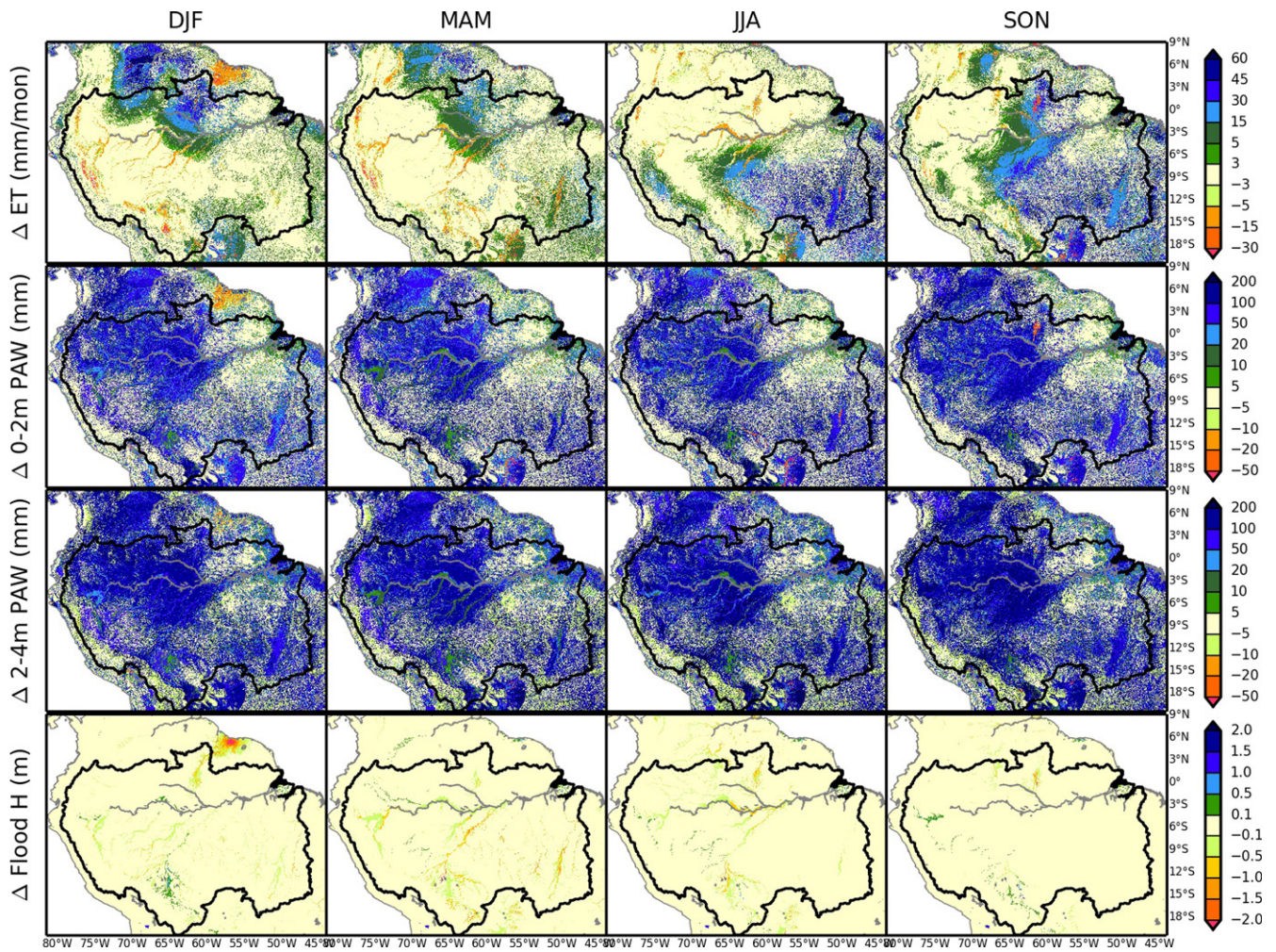


Figure 6. Difference between LHF-21C and FD-21C mean seasonal evapotranspiration, 0–2 m PAW, 2–4 m PAW, and flood height.

Table 1. Simulated 20C to 21C changes in annual ET and river runoff, as differences in  $\text{mm yr}^{-1}$  and % change in parentheses.

LHF 21C-20C	ET	Runoff
Entire Amazon	293 (27)	—
Above Obidos	397 (38)	-436 (-28)
Above Manaus	433 (41)	-390 (-23)
Japura	454 (44)	-479 (-22)
Madeira	337 (34)	-291 (-22)
Negro	506 (45)	-726 (-32)
Purus	490 (48)	-248 (-22)
Solimoes	370 (39)	-96 (-6)
Tapajos	320 (28)	-446 (-59)
Tocantins	75 (7)	-201 (-32)
Xingu	193 (16)	-512 (-66)

drainage and instant discharge into rivers within a cell. Figure 6 (first row) presents the difference between seasonal mean ET at the end of 21 century (LHF-21C minus FD-21C). We note the following. First, in the western Amazon, the presence of groundwater leads to little or no ET difference (light yellow patches) despite the wetter soils (second and

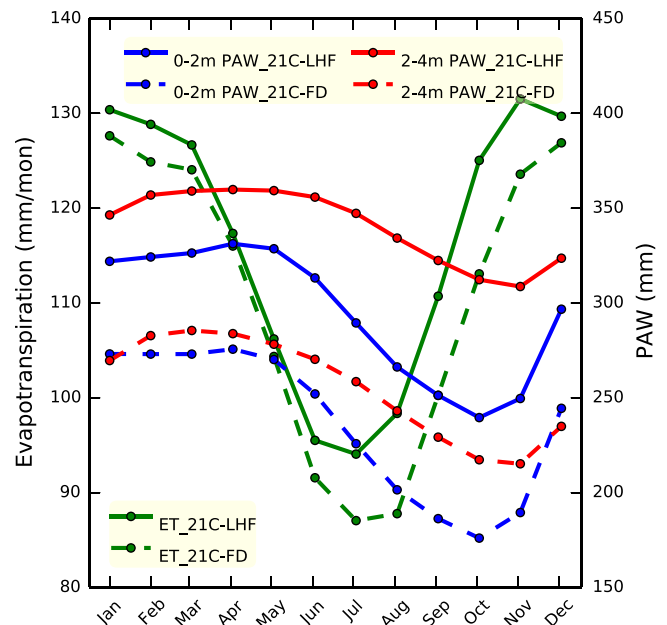


Figure 7. Seasonal cycle of the climatological mean total ET and PAW averaged over the Amazon river basin from the LHF-21C and FD-21C simulations.

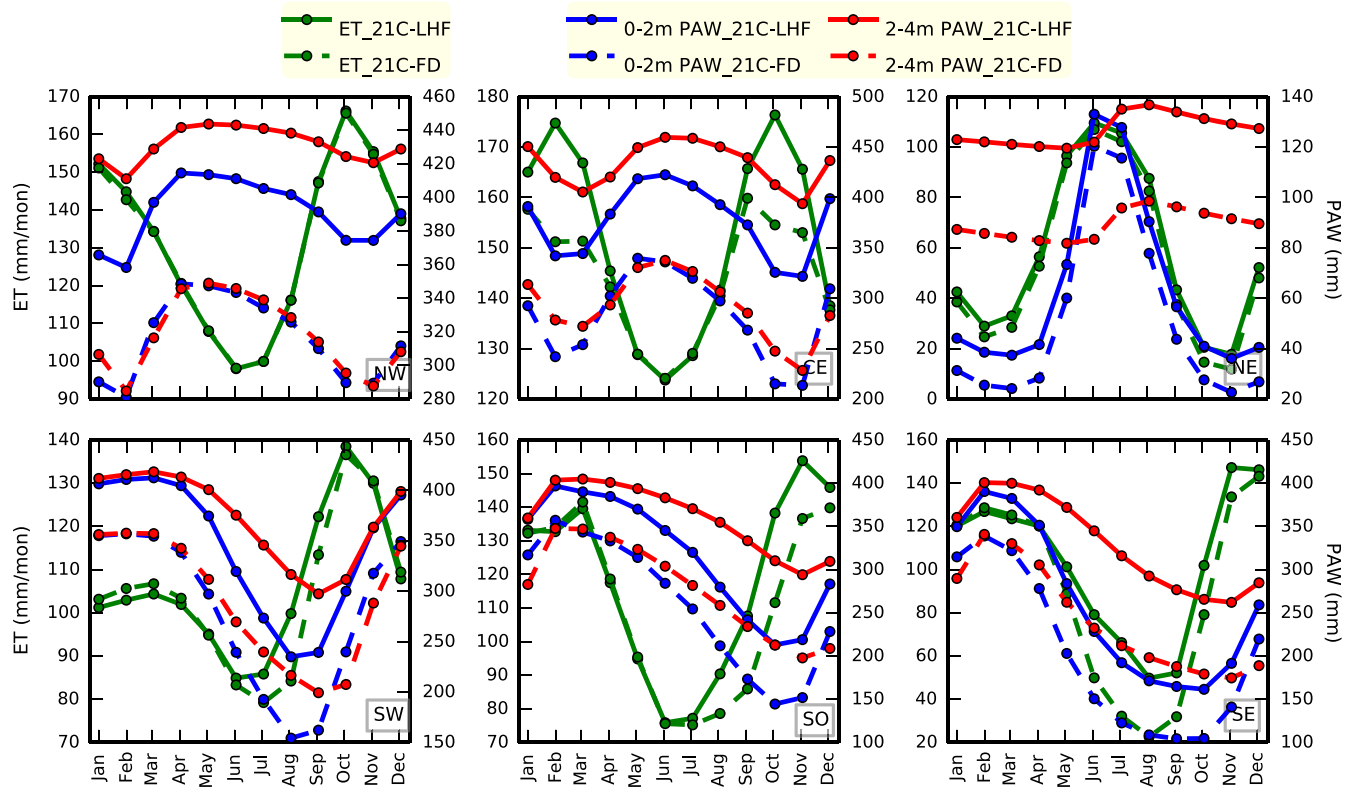


Figure 8. Same as in figure 7 but averaged over the six windows shown in figure 2.

Table 2. Differences in ET and river runoff (mm yr<sup>-1</sup>) as simulated by LHF (with groundwater) and FD (without), with % difference in parentheses.

21C LHF-FD	ET	Runoff
Entire Amazon	67 (5)	—
Above Obidos	43 (3)	-52 (-4)
Above Manaus	35 (2)	-43 (-3)
Japura	16 (1)	-35 (-2)
Madeira	45 (4)	-40 (-4)
Negro	39 (2)	-75 (-5)
Purus	41 (3)	10 (1)
Solimoes	4 (0)	23 (2)
Tapajos	112 (8)	-117 (-28)
Tocantins	146 (14)	-122 (-22)
Xingu	110 (8)	-71 (-21)

third row), marking areas with no soil water limitation. Second, ET is higher in the FD run over the floodplains (red patches), because in the freely drained model the drained soil water is instantly placed in the rivers causing fast runoff and more flooding (fourth row) and higher open water evaporation in FD. Third, during the respective hemispheric dry season, ET is significantly higher in the groundwater run, marking areas-seasons where soils are wetted from below; groundwater-enabled ET can be up to 50 mm mon<sup>-1</sup>.

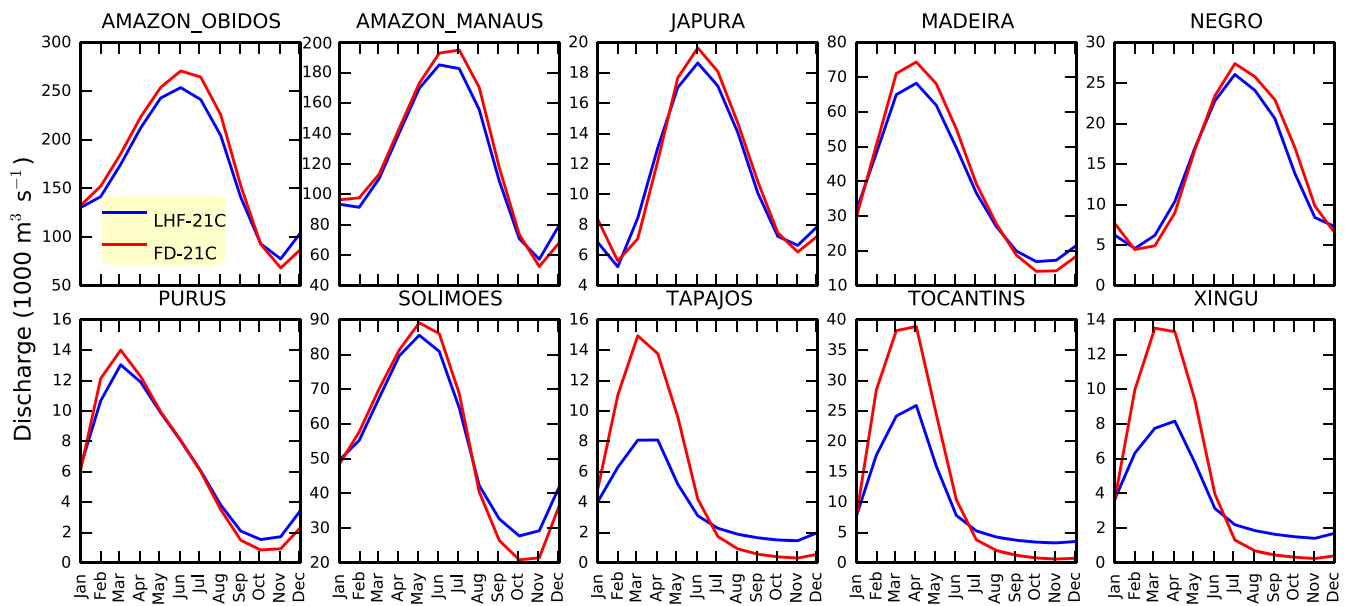
Figures 7 and 8 compare the mean seasonal time series for LHF (solid lines) and FD (dashed lines) for 21C. Averaged over the Amazon, the difference in ET (green) is

particularly large in July through November, the southern dry season and the season of soil water control on ET; these notable differences of up to 10 mm mon<sup>-1</sup> come from the large differences in the central and northwestern Amazon (figure 6) associated with the higher PAW in LHF; the differences in both 0–2 m and 2–4 m PAW are the largest during the dry seasons. On an annual scale the Amazon basin average ET in LHF is ~67 mm (~5%) higher than in the FD (table 2). Figure 8 shows the same time series over the six windows (location in figure 2). Soils are wetter with the groundwater in all regions, but ET is enhanced only where soil water is limiting such as in the southeastern Amazon.

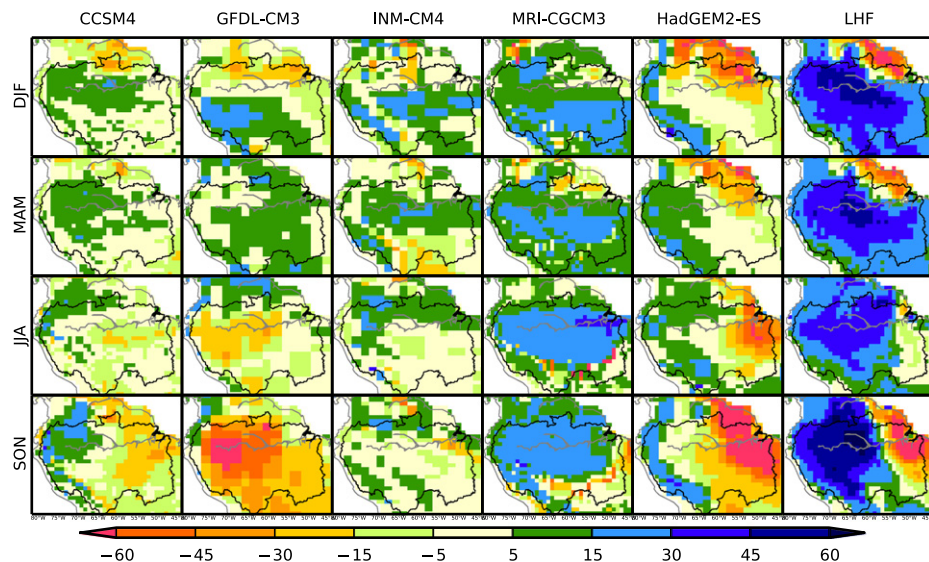
Figure 9 compares river discharge, and again the largest differences are in the southeast where groundwater subsidizes ET at the expense of river discharge in the LHF run. Here, wet-season rain is saved in the groundwater store (less wet-season runoff) and released in the dry season (more dry-season runoff), and annually the reduced river discharge reflects the enhanced ET flux. Table 2 summarizes the LHF and FD differences in ET and runoff (mm).

#### 4. Summary of findings

Using HadGEM2-ES simulations of the present and future Amazon climate to drive our land hydrology model (LHF) we assess the potential changes in the hydrologic conditions including ET, soil water, WTD, and river discharge. We conducted four 10 yr long hydrologic model simulations, at



**Figure 9.** Simulated streamflow by LHF-21C (with dynamic groundwater) and FD-21C (free drainage).



**Figure 10.** Changes in seasonal evapotranspiration from 20C (1991–2000) to 21C (2090–2099) simulated by five different GCMs and our fully coupled groundwater model (LHF), forced by HadGEM2-ES (first column). All model results have been re-sampled/aggregated to one degree grids for comparison.

the end of 20th and 21st century, with and without the groundwater.

Our results suggest that, first, over most of the western and central Amazon, ET will increase in response to increased PET in warmer temperatures, despite decreasing soil water; that is, ET in these regions will likely remain atmospheric-demand limited; and this ET increase is accompanied by a widespread reduction in river discharge. Second, in the eastern Amazon, ET will decrease in the dry season in response to decreasing soil water, despite the increasing PET demand; that is, ET in these regions will remain or become more water-supply limited; and here river flow reduction is most pronounced. Third, the spatial extent of water-limited regions will likely expand in the southeast, and the hydrologic dry

season, as indicated by the soil water store, will become drier and longer.

We then contrasted the above results (LHF) with the runs without groundwater (FD), to assess if groundwater can provide some relief to the projected water stress. The presence of groundwater will indeed make soil wetter across the Amazon, but it only enhances ET where and when soil water is limiting, such as in the southeastern Amazon. The change in ET over the century differs by only 5% over the whole Amazon between LHF and FD runs, but more notably (8%–14%) in the southeastern basins of Tapajos, Tocantins, and Xingu (table-2).

It is important to note that these results are based on HadGEM2-ES model, which underestimates present-day

rainfall in the northeast (figure S2) and projects further decline in the future. There are substantial variations among different models in the magnitude and even the direction of precipitation change in the future Amazon (e.g., Malhi *et al* 2008, Meehl *et al* 2007, Cook *et al* 2012, Yin *et al* 2013). However, a tendency toward a drier dry-season in the east and wetter wet-season in the west is common (see Malhi *et al* 2008). Even in the northeastern Amazon, observations have suggested a consistent decline in precipitation since the mid-1970s (Marengo 2004), which if continued into the future could result in significant decline as suggested by HadGEM2-ES, and thus the latter forecast is not entirely inconceivable.

We also note that we assume unchanged vegetation for the 20C and 21C runs. Since the vegetation will likely shift toward more drought tolerant species in the eastern Amazon, we may over-estimate 21C ET and the reliance on groundwater in the dry season using present-day vegetation. However, since the water table declined far below the depth to influence vegetation (water table drop more than 10 m in northeastern Amazon), vegetation types and needs did not affect the results.

Our results are in general agreement with climate model projections of decreasing soil moisture at the end of the century, but differ from them regarding the degree to which it limits ET. Figure 10 compares the simulated ET changes among five well known GCMs employed by the IPCC AR5 including HadGEM2-ES. Our model (rightmost column) suggests large ET increase over the western and central Amazon, despite that it is forced by the Hadley climate (fifth column). This part of the Amazon is relatively low and flat, and the shallow groundwater in our model prevents fast drainage and allows the rain to stay in the soil longer for later use by plants; and as PET demand increases by the end of 21st century, the wet soil can meet the higher demand. This is also simulated by other models but the magnitude is far less. Our results are in line with that of Harper *et al* (2014) who concluded that the reduced soil moisture stress in the model with improved soil biophysics significantly increases ET, consequently increasing moisture recycling and stronger precipitation in the region. This large increase in ET as simulated by our model may also have implications to downwind precipitation in the La Plata basin, much of which originates as ET from the Amazon (e.g., van der Ent *et al* 2010).

## Acknowledgement

Funding comes from NSF (NSF-AGS-1045110), US EPA (EPA-STAR-RD834190) and the European Commission FP7 (EartH2Observe). Computation used the NCAR's Computational and Information Systems Laboratory, sponsored by NSF and other agencies. We thank Haibin Li for the support with GCM data download and processing.

## References

- Allen R G, Pereira L S, Raes D and Smith M 1998 Crop evapotranspiration, guidelines for computing crop water requirements *FAO Irrigation and Drainage Paper 56* (Rome: FAO) p 300
- Bates P D, Horritt M S and Fewtrell T J 2010 A simple inertial formulation of the shallow water equations for efficient two-dimensional flood inundation modeling *J. Hydrol.* **387** 33–45
- Betts R A, Cox P M, Collins M, Harris P P, Huntingford C and Jones C D 2004 The role of ecosystem–atmosphere interactions in simulated Amazonian precipitation decrease and forest dieback under global warming *Theor. Appl. Climatol.* **78** 157–75
- Bruno R D, da Rocha H R, de Freitas H C, Goulden M L and Miller S D 2006 Soil moisture dynamics in an eastern Amazonian tropical forest *Hydrol. Process.* **20** 2477–89
- Brutsaert W 2005 *Hydrology: An Introduction* (Cambridge: Cambridge University Press) p 605
- Choudhury B J, Digirolamo N E, Susskind J, Darnell W L, Gupta S K and Asrar G 1998 A biophysical process-based estimate of global land surface evaporation using satellite and ancillary data, II, regional and global patterns of seasonal and annual variations *J. Hydrol.* **205** 186–204
- Church J A *et al* 2013 Sea level change *Climate Change 2013: The Physical Science Basis. Contribution of Working Group I to the Fifth Assessment Report of the Intergovernmental Panel on Climate Change* ed T F Stocker *et al* (Cambridge: Cambridge University Press)
- Cook B, Zeng N and Yoon J H 2012 Will Amazonia dry out? magnitude and causes of change from IPCC climate model projections *Earth Interact.* **16** 1–27
- Cook K H and Vizy E K 2008 Effects of twenty-first-century climate change on the Amazon rain forest *J. Clim.* **21** 542–60
- Cox P M, Betts R A, Collins M, Harris P P, Huntingford C and Jones C D 2004 Amazonian forest dieback under climate-carbon cycle projections for the 21st century *Theor. Appl. Climatol.* **78** 137–56
- Cox P M, Betts R A, Jones C D, Spall S A and Totterdell I J 2000 Acceleration of global warming due to carbon-cycle feedbacks in a coupled climate model *Nature* **408** 184–7
- Da Rocha H R *et al* 2009 Patterns of water and heat flux across a biome gradient from tropical forest to savanna in Brazil *J. Geophys. Res.* **114** G00B12
- Davidson E A *et al* 2012 The Amazon basin in transition *Nature* **481** 321–32
- Diffenbaugh N S and Giorgi F 2012 Climate change hotspots in the CMIP5 global climate model ensemble *Clim. Change* **114** 813–22
- Eva H D, Belward A S, de Miranda E E, di Bella C M, Gonds V, Huber O, Jones S, Sgrenzaroli M and Fritz S 2004 A land cover map of South America *Glob. Change Biol.* **10** 1–14
- Fan Y and Miguez-Macho G 2010 Potential groundwater contribution to Amazon dry-season evapotranspiration *Hydrol. Earth Syst. Sci.* **14** 2039–56
- Fan Y, Miguez-Macho G, Weaver C P, Walko R and Robock A 2007 Incorporating water table dynamics in climate modeling: 1. water table observations and equilibrium water table simulations *J. Geophys. Res.* **112** D10I25
- Field C B, Behrenfeld M J, Randerson J T and Falkowski P 1998 Primary production of the biosphere: integrating terrestrial and oceanic components *Science* **281** 237–40
- Fu R *et al* 2013 Increased dry-season length over southern Amazonia in recent decades and its implication for future climate projection *Proc. Natl. Acad. Sci. USA* **110** 18110–5
- Galbraith D, Levy P E, Sitch S, Huntingford C, Cox P, Williams M and Meir P 2010 Multiple mechanisms of Amazonian forest biomass losses in three dynamic global

- vegetation models under climate change *New Phytol.* **187** 647–65
- Gedney N, Cox P M, Douville H, Polcher J and Valdes P J 2000 Characterising GCM land surface schemes to understand their responses to climate change *J. Clim.* **13** 3066–79
- Good P, Jones C, Lowe J, Betts R and Gedney N 2013 Comparing tropical forest projections from two generations of Hadley centre earth system models, HadGEM2-ES and HadCM3LC *J. Clim.* **26** 495–511
- Harper A, Baker I T, Denning A S, Randall D A, Dazlich D and Branson M 2014 Impact of evapotranspiration on dry season climate in the Amazon forest *J. Clim.* **27** 574–91
- Hasler N and Avissar R 2007 What controls evapotranspiration in the Amazon basin? *J. Hydrometeorol.* **8** 380–95
- Hodnett M G, Pimentel da Silva L, da Rocha H R and Cruz Senna R 1995 Seasonal soil water storage changes beneath central Amazonian rainforest and pasture *J. Hydrol.* **170** 233–54
- Huete A R *et al* 2006 Amazon rainforests green-up with sunlight in dry season *Geophys. Res. Lett.* **33** L06405
- Huntingford C *et al* 2008 Towards quantifying uncertainty in predictions of Amazon 'dieback' *Phil. Trans. R. Soc. B* **363** 1857–64
- Huntingford C, Harris P P, Gedney N, Cox P M, Betts R A, Marengo J A and Gash J H C 2004 Using a GCM analogue model to investigate the potential for Amazonian forest dieback *Theor. Appl. Climatol.* **78** 177–85
- IPCC 2007 *Climate Change 2007: the Physical Science Basis Contribution of Working Group I to The Fourth Assessment Report of the Intergovernmental Panel on Climate Change* ed T F Stocker *et al* (Cambridge: Cambridge University Press)
- Jipp P H, Nepstad D C, Cassel D K and De Carvalho C R 1998 Deep soil moisture storage and transpiration in forests and pastures of seasonally-dry Amazonia *Clim. Change* **39** 395–412
- Juárez R I N, Hodnett M G, Fu R, Goulden M L and Von Randow C 2007 Control of dry season evapotranspiration over the Amazonian forest as inferred from observations at a Southern Amazon forest site *J. Clim.* **20** 2827–39
- Lewis S L, Brando P M, Phillips O L, van der Heijden G M F and Nepstad D 2011 The 2010 Amazon drought *Science* **331** 554
- Li W, Fu R and Dickinson R E 2006 Rainfall and its seasonality over the Amazon in the 21st century as assessed by the coupled models for the IPCC AR4 *J. Geophys. Res.* **111** D02111
- Liang X, Lettenmaier D P, Wood E F and Burges S J 1994 A simple hydrologically based model of land surface water and energy fluxes for general circulation models *J. Geophys. Res.* **99** 14415–28
- Malhi Y *et al* 2009 Exploring the likelihood and mechanism of a climate-change-induced dieback of the Amazon rainforest *Proc. Natl. Acad. Sci. USA* **106** 20610–5
- Malhi Y, Roberts J T, Betts R A, Killeen T, Li W and Nobre C 2008 Climate change, deforestation, and the fate of the Amazon *Science* **319** 169–72
- Marengo J A 2004 Interdecadal variability and trends of rainfall across the Amazon basin *Theor. Appl. Climatol.* **78** 79–96
- Marengo J A, Tomasella J, Alves L M, Soares W R and Rodriguez D A 2011 The drought of 2010 in the context of historical droughts in the Amazon region *Geophys. Res. Lett.* **38** L12703
- Meade R H, Rayol J M, da Conceicao S C and Natividade J R G 1991 Backwater effects in the Amazon river basin of Brazil *Environ. Geol. Water Sci.* **18** 105–14
- Meehl G A *et al* 2007 Global climate projections *Climate Change 2007: The Physical Science Basis* ed S Solomon *et al* (Cambridge: Cambridge University Press) pp 747–845
- Miguez-Macho G and Fan Y 2012a The role of groundwater in the Amazon water cycle: 1. Influence on seasonal streamflow, flooding and wetlands *J. Geophys. Res.* **117** D15113
- Miguez-Macho G and Fan Y 2012b The role of groundwater in the Amazon water cycle: 2. Influence on seasonal soil moisture and evapotranspiration *J. Geophys. Res.* **117** D15114
- Miguez-Macho G, Fan Y, Weaver C P, Walko R and Robock A 2007 Incorporating water table dynamics in climate modeling: 2. Formulation, validation, and soil moisture simulation *J. Geophys. Res.* **112** D13108
- Monteith J L 1965 Evaporation and environment *Symp. Soc. Exp. Biol.* **19** 205–34
- Moss R H *et al* 2010 The next generation of scenarios for climate change research and assessment *Nature* **463** 747–56
- Nepstad D C *et al* 1994 The role of deep roots in the hydrological and carbon cycles of Amazonian forests and pastures *Nature* **372** 666–9
- Nepstad D C, Stickler C M, Filho B S and Merry F 2008 Interactions among Amazon land use, forests and climate: prospects for a near-term forest tipping point *Phil. Trans. R. Soc. B* **363** 1737
- Nobre C A, Sellers P J and Shulka J 1991 Amazonian deforestation and regional climate change *J. Clim.* **4** 957–88
- Oliveira R S, Dawson T E, Burgess S S O and Nepstad D C 2005 Hydraulic redistribution in three Amazonian trees *Oecologia* **145** 354–63
- Oyama M D and Nobre C A 2003 A new climate-vegetation equilibrium state for Tropical South America *Geophys. Res. Lett.* **30** 2199
- Phillips O L *et al* 2009 Drought sensitivity of the Amazon rainforest *Science* **323** 1344–7
- Pokhrel Y N, Fan Y, Miguez-Macho G, Yeh P J-F and Han S-C 2013 The role of groundwater in the Amazon water cycle: 3. Influence on terrestrial water storage computations and comparison with GRACE *J. Geophys. Res.* **118** 3233–44
- Riahi K, Rao S, Krey V, Cho C, Chirkov V, Fischer G, Kindermann G, Nakicenovic N and Rafaj P 2011 RCP 8.5—A scenario of comparatively high greenhouse gas emissions *Clim. Change* **109** 33–57
- Salazar L F, Nobre C A and Oyama M D 2007 Climate change consequences on the biome distribution in tropical South America *Geophys. Res. Lett.* **34** L09708
- Saleska S, Didan K, Huete A R and Da Rocha H R 2007 Amazon forests green-up during 2005 drought *Science* **318** 612
- Samanta A, Ganguly S, Hashimoto H, Devadiga S, Vermote E, Knyazikhin Y, Nemani R R and Myneni R B 2010 Amazon forests did not green-up during the 2005 drought *Geophys. Res. Lett.* **37** L05401
- Shukla J, Nobre C and Sellers P 1990 Amazon deforestation and climate change *Science* **247** 1322–5
- Shuttleworth W J 1988 Evaporation from Amazonian rainforest *Proc. R. Soc.* **233** 321–46
- Tollefson J 2010 Amazon drought raises research doubts *Nature* **466** 423
- van der Ent R J, Savenije H H G, Schaefli B and Steele-Dunne S C 2010 Origin and fate of atmospheric moisture over continents *Water Resour. Res.* **46** W09525
- Walker R, Moore N J, Arima E, Perz S, Simmons C, Caldas M, Vergara D and Bohrer C 2009 Protecting Amazon with protected areas *Proc. Natl. Acad. Sci.* **106** 10582–6
- Walko R L *et al* 2000 Coupled atmosphere-biophysics-hydrology models for environmental modeling *J. Appl. Meteorol.* **39** 931–44
- Werth D and Avissar R 2004 The regional evapotranspiration of the Amazon *J. Hydrometeorol.* **5** 100–9
- Yamazaki D, Kanae S, Kim H and Oki T 2011 A physically based description of floodplain inundation dynamics in a global river routing model *Water Resour. Res.* **47** W04501
- Yin L, Fu R, Shevilakova E and Dickinson R E 2013 How well can CMIP5 simulate precipitation and its controlling processes over tropical South America? *Clim. Dyn.* **41** 3127–43