

Received: 19 February 2018 | Revised: 25 June 2018 | Accepted: 21 July 2018

DOI: 10.1111/accel.12834

SHORT TAKEWILEY **Aging Cell**

Adult Sox2⁺ stem cell exhaustion in mice results in cellular senescence and premature aging

Jéssica M. Vilas¹ | Carmen Carneiro² | Sabela Da Silva-Álvarez¹ | Alba Ferreirós¹ |
Patricia González³ | María Gómez³ | Sagrario Ortega⁴ | Manuel Serrano^{5,6,7} |
Tomás García-Caballero⁸ | Miguel González-Barcia⁹ | Anxo Vidal² | Manuel Collado¹

¹Laboratorio de Células Madre en Cáncer y Envejecimiento, Instituto de Investigación Sanitaria de Santiago de Compostela (IDIS), Xerencia de Xestión Integrada de Santiago (XXIS/SERGAS), Santiago de Compostela, Spain

²Departamento de Fisioloxía and Centro de Investigación en Medicina Molecular (CIMUS), Instituto de Investigación Sanitaria de Santiago de Compostela (IDIS), Universidade de Santiago de Compostela, Santiago de Compostela, Spain

³Histopathology Core Unit, Spanish National Cancer Research Centre (CNIO), Madrid, Spain

⁴Transgenic Mice Unit, Spanish National Cancer Research Centre (CNIO), Madrid, Spain

⁵Tumor Suppression Group, Spanish National Cancer Research Centre (CNIO), Madrid, Spain

⁶Institute for Research in Biomedicine (IRB Barcelona), The Barcelona Institute of Science and Technology (BIST), Barcelona, Spain

⁷Catalan Institution for Research and Advanced Studies (ICREA), Barcelona, Spain

⁸Departamento de Ciencias Morfológicas, Facultad de Medicina, USC, Xerencia de Xestión Integrada de Santiago (XXIS/SERGAS), Santiago de Compostela, Spain

⁹Servicio de Farmacia, Xerencia de Xestión Integrada de Santiago (XXIS/SERGAS), Santiago de Compostela, Spain

Correspondence

Manuel Collado, Laboratorio de Células Madre en Cáncer y Envejecimiento, Instituto de Investigación Sanitaria de Santiago de Compostela (IDIS), Xerencia de Xestión Integrada de Santiago (XXIS/SERGAS), E15706 Santiago de Compostela, Spain.
Email: manuel.collado.rodriquez@sergas.es and

Anxo Vidal, Departamento de Fisioloxía and Centro de Investigación en Medicina Molecular (CIMUS), Universidade de Santiago de Compostela, Instituto de Investigación Sanitaria de Santiago de Compostela (IDIS), E15782 Santiago de Compostela, Spain.
Email: anxo.vidal@usc.es

Funding information

Work in the laboratory of M.C. is funded by an ISCIII and EU-FEDER grant (PI14/00554)

Abstract

Aging is characterized by a gradual functional decline of tissues with age. Adult stem and progenitor cells are responsible for tissue maintenance, repair, and regeneration, but during aging, this population of cells is decreased or its activity is reduced, compromising tissue integrity and causing pathologies that increase vulnerability, and ultimately lead to death. The causes of stem cell exhaustion during aging are not clear, and whether a reduction in stem cell function is a cause or a consequence of aging remains unresolved. Here, we took advantage of a mouse model of induced adult Sox2⁺ stem cell depletion to address whether accelerated stem cell depletion can promote premature aging. After a short period of partial repetitive depletion of this adult stem cell population in mice, we observed increased kyphosis and hair graying, and reduced fat mass, all of them signs of premature aging. It is interesting that cellular senescence was identified in kidney after this partial repetitive Sox2⁺ cell depletion. To confirm these observations, we performed a prolonged protocol of partial repetitive depletion of Sox2⁺ cells, forcing regeneration from the remaining Sox2⁺ cells, thereby causing their exhaustion. Senescence specific staining and the analysis of the expression of genetic markers clearly corroborated that adult stem cell exhaustion can lead to cellular senescence induction and premature aging.

This is an open access article under the terms of the Creative Commons Attribution License, which permits use, distribution and reproduction in any medium, provided the original work is properly cited.

© 2018 The Authors. *Aging Cell* published by the Anatomical Society and John Wiley & Sons Ltd.

KEYWORDS

Sox2, aging, adult stem cells, stem cell exhaustion

1 | INTRODUCTION, RESULTS, DISCUSSION

Adult stem cell exhaustion is considered a hallmark of aging, and it is believed to be behind the progressive loss of physiological integrity that leads to the impaired tissue and organ function that results in the development of multiple pathologies collectively known as age-related diseases (López-Otín, Blasco, Partridge, Serrano, & Kroemer, 2013). It is not clear; however, if defective or reduced adult stem cell pools are responsible for the dysfunction of tissues in old organisms or, conversely, if aging causes a reduction in the number and/or functionality of the stem cells (Goodell & Rando, 2015; Schultz & Sinclair, 2016; Sharpless & DePinho, 2007).

SRY (sex determining region Y)-box 2, Sox2, is a transcription factor of the Sox family with a crucial role regulating and maintaining self-renewal and pluripotency in embryonic stem cells (Orkin et al., 2008; Rizzino, 2013). Apart from its role during early development, Sox2 is also expressed in progenitors at later stages of the mouse embryo (Graham et al., 2003; Doetzlhofer et al., 2006; Klassen et al., 2004; Aubert et al., 2003), and its expression persists in the adult organism in tissue stem cells of stratified and glandular epithelia of ectodermal and endodermal origin, as well as in sensory cells (Merkel and taste bud cells) and spermatogonial stem cells, where it has been proved to be a critical factor sustaining the homeostasis of these tissues (Arnold et al., 2011). Recently also, it has been shown that Sox2 expression diminishes with aging in several tissues in mice and humans (Carrasco-García et al., 2018). As Sox2 expression is critical for the normal regeneration and maintenance of numerous adult stem cell compartments, severe ablation of Sox2+ cells in adult mice results in the lethal disruption of tissue homeostasis. In an interesting manner, however, partial depletion of Sox2+ cells causes a reversible disruption of tissue integrity, and restoration of normal tissue homeostasis rescues morbidity. This recovery originates from the action of residual Sox2+ cells capable of reorganizing and regenerating the affected tissues (Arnold et al., 2011).

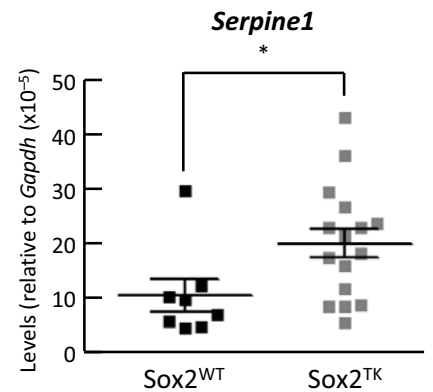
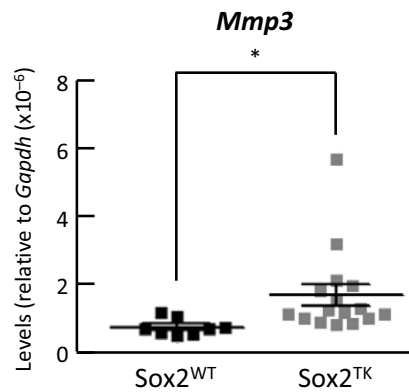
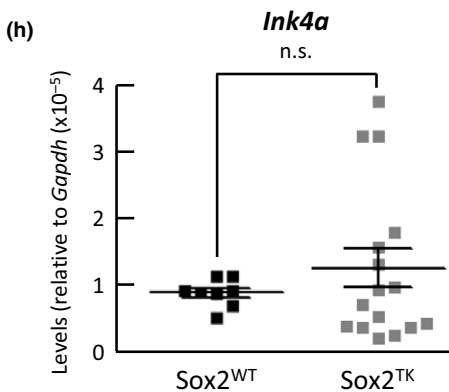
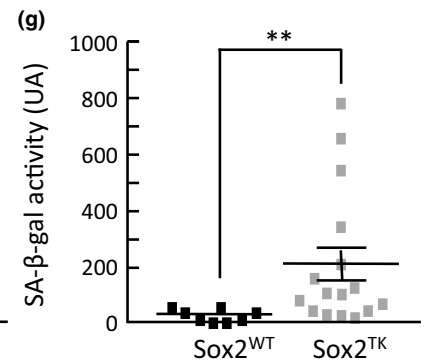
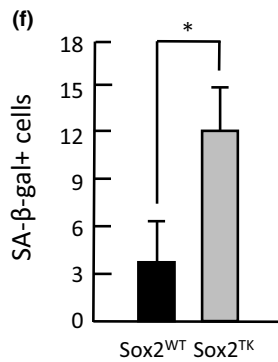
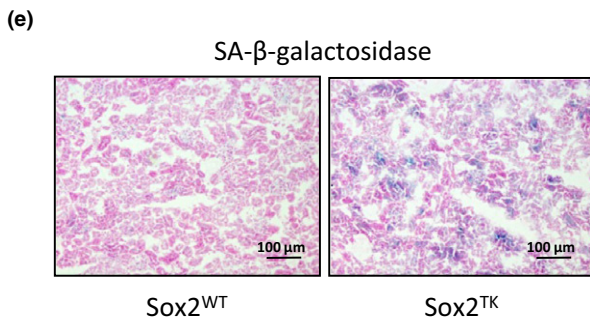
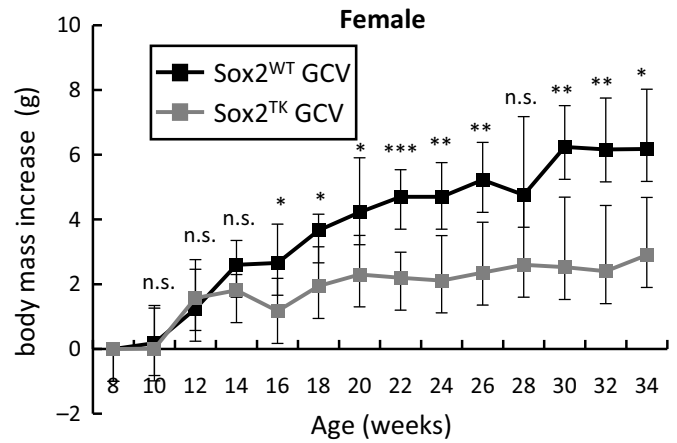
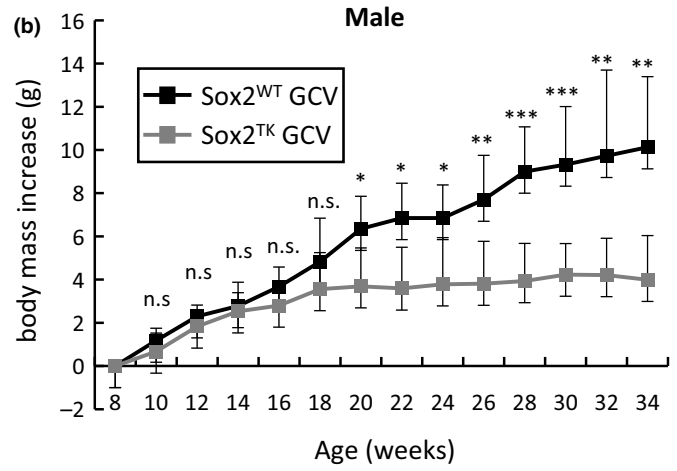
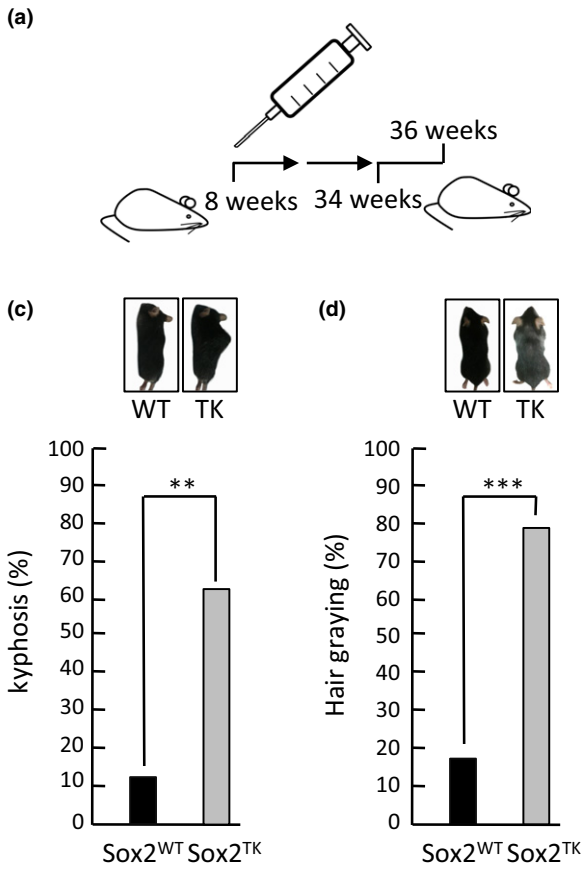
Here, we decided to test the stem cell exhaustion hypothesis of aging by subjecting transgenic mice to a protocol of partial repetitive

depletion of adult Sox2+ cells. We reasoned that cycles of partial ablation and recovery could result in the exhaustion of the regenerating capacity of these Sox2+ cells and thus provided an excellent opportunity to test whether stem cell exhaustion results in premature aging.

We took advantage of transgenic Sox2-TK mice, in which herpes simplex virus type-1 (HSV1) thymidine kinase (TK) gene was inserted into the Sox2 allele (Arnold et al., 2011). A similar mouse model previously generated in the laboratory of Konrad Hochedlinger was successfully used to prove that adult Sox2+ cells are stem and progenitor cells in a number of tissues (Arnold et al., 2011). Once we obtained these mice, we decided to confront Sox2-WT mice versus Sox2-TK mice, both treated with GCV. Starting at 8 weeks of age, mice received intraperitoneal injections of GCV every 2 weeks and until they were 34 weeks old, for a total of 14 injections (Figure 1a). We followed the increase in body mass along the experiment and observed that Sox2-TK mice treated with GCV were not increasing their body mass as much as GCV-treated WT animals, and this was happening for both, male and female mice (Figure 1b). When the treatment was stopped, we measured body mass composition using echoMRI and found that Sox2-TK mice treated with GCV had a reduced fat mass compared to Sox2-WT mice, although this difference only reached statistical significance for male mice (Figure S1). We also confirmed the reduction in the number of Sox2+ cells, and the effects produced by the partial depletion in tissues previously described as dependent on the activity of stem and progenitor Sox2+ cells. We inspected the testis (Arnold et al., 2011), esophagus and trachea (Zhang et al., 2017) and found that GCV-treated mice were showing atrophic seminiferous tubules (Figure S2), a feature previously described for these transgenic mice after acute depletion of Sox2+ cells (Arnold et al., 2011) and a frequent event during aging (Gosden, Richardson, Brown, & Davidson, 1982), and a decreased epithelial cellularity in esophagus and trachea that corresponded with a reduced number of Sox2+ cells (Figure S2).

During GCV treatment, visual inspection of mice revealed obvious signs of aging such as pronounced spinal kyphosis and hair

FIGURE 1 Short repetitive partial depletion of Sox2+ cells leads to defective growth and induction of senescence in mice. (a) Schematic representation of the repetitive partial depletion protocol in mice by intraperitoneal injection of GCV starting at 8 weeks, every 2 weeks, and until mice were 34 weeks. After treatment, mice were sacrificed at 36 weeks of age. (b) Body mass increase (g) in male (upper graph; $n = 13$) and female (lower graph; $n = 11$) control mice (Sox2^{WT}; $n = 8$) or Sox2-TK transgenic mice (Sox2^{TK}; $n = 16$) treated with GCV along the experiment. (c) Quantification of animals (percentage, %) showing evident signs of kyphosis after GCV treatment. (d) Quantification of animals (percentage, %) showing evident signs of hair graying after GCV treatment. (e) SABetaGal staining of kidney sections from control wild-type (Sox2^{WT}) and Sox2-TK transgenic (Sox2^{TK}) animals after GCV treatment. (f) Quantification of the number of SABetaGal positive cells observed in stained kidney sections. (g) Chemiluminescence quantification of SABetaGal activity using Galacton as a substrate. (h) Quantification of mRNA expression by QPCR of *Ink4a*, *Mmp3* and *Serpine1* in kidneys from control wild-type (Sox2^{WT}) and Sox2-TK transgenic (Sox2^{TK}) animals. Results are presented as mean \pm SD. *** $p < 0.001$, ** $p < 0.01$, * $p < 0.05$, n.s. nonsignificant



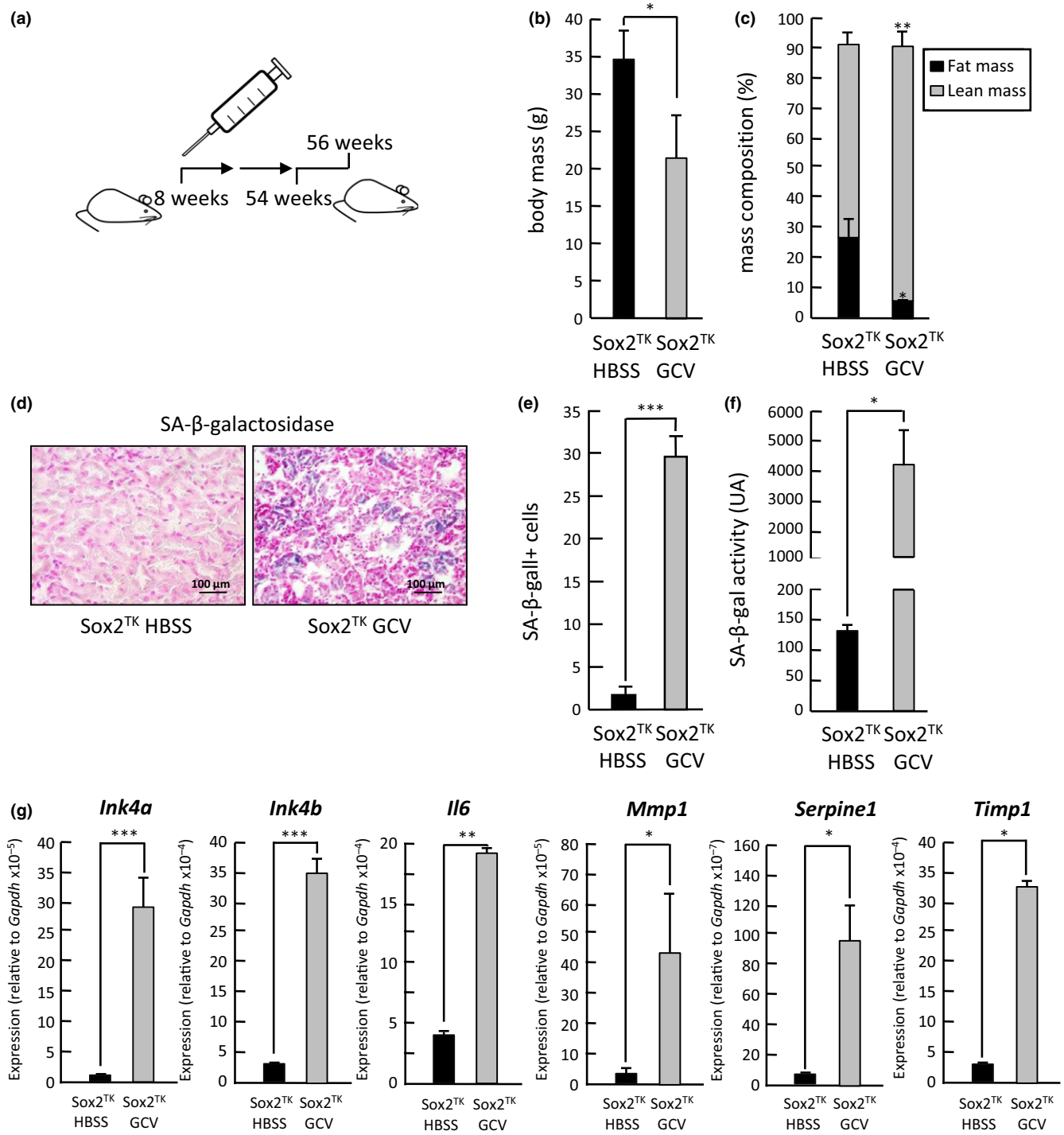


FIGURE 2 Prolonged repetitive partial depletion of Sox2+ cells leads to induction of senescence and premature mice. (a) Schematic representation of the prolonged repetitive partial depletion protocol in mice by intraperitoneal injection of GCV starting at 8 weeks, every 2 weeks, and until mice were 54 weeks. After treatment, mice were sacrificed at 56 weeks of age. (b) Quantification of body mass (g) in Sox2-TK transgenic animals after GCV ($n = 5$) or vehicle (HBSS; $n = 2$) treatment. (c) Quantification of relative body mass composition (% of fat and lean mass) in Sox2-TK transgenic animals after GCV or vehicle (HBSS) treatment. (d) SABetaGal staining of kidney sections from Sox2-TK transgenic animals after GCV or vehicle (HBSS) treatment. (e) Quantification of the number of SABetaGal positive cells observed in d. (f) Chemiluminescence quantification of SABetaGal activity using Galacton as a substrate. (g) Quantification of mRNA expression by QPCR of *Ink4a*, *Ink4b*, *Il6*, *Mmp1*, *Serpine1*, and *Timp1* in kidneys from Sox2-TK transgenic animals after GCV or vehicle (HBSS) treatment. Results are presented as mean \pm SD. *** $p < 0.001$, ** $p < 0.01$, * $p < 0.05$, n.s.: nonsignificant

graying (Harkema, Youssef, & Bruin, 2016). We evaluated these parameters at the end of the treatment and found a significantly higher proportion of animals showing kyphosis in the Sox2-TK treated group compared to the Sox2-WT group (Figure 1c). Also, the percentage of animals showing gray hair was significantly higher in the Sox2-TK group treated with GCV compared to the Sox2-WT treated mice (Figure 1d). At last, we decided to test hair regrowth capacity of these animals as a surrogate functional readout of aging of the animals (Finch, 1973). Sox2-TK mice treated with GCV showed a clear reduction in their potential to regrow hair after plucking, with a majority of animals completely unable of regrowing hair after 15 days, compared to Sox2-WT treated mice (Figure S3), pointing to a functional defect in Sox2-TK mice after treatment.

Since the gradual accumulation of senescent cells in tissues with age is a hallmark of aging (Jeyapalan & Sedivy, 2008), we decided to assess the number of cells undergoing senescence after partial repetitive Sox2+ cell exhaustion in the Sox2-TK and Sox2-WT mice treated with GCV. For this, we analyzed the expression of the most widely used marker of the process, the senescence-associated beta-galactosidase activity (SABetaGal) (Dimri et al., 1995) in kidneys from treated animals, an organ typically showing a clear age-related deterioration. When we used frozen kidney sections to perform SABetaGal staining reactions, we observed a clear positive X-Gal staining indicative of induction of cell senescence that appeared higher in GCV-treated Sox2-TK mice compared to Sox2-WT mice (Figure 1e). It is interesting that Sox2 is not expressed in the kidney suggesting that a systemic response is triggered by the exhaustion of the Sox2+ cells, causing the induction of cell senescence at distant tissues. Quantifications of senescent positive cells corroborated this observation (Figure 1f). To confirm this result, we used an alternative substrate that produces a luminescent reaction, Galacton (Bassaneze, Miyakawa, & Krieger, 2008), instead of a color reaction obtaining very similar results (Figure 1g). In addition, we measured the expression levels of several senescence marker genes: cell cycle inhibitor *Ink4a* (Krishnamurthy et al., 2004), matrix metalloprotease *Mmp3* (Komosinska-Vashev et al., 2011), and the serine protease inhibitor *Serpine1* (Goldstein, Moerman, Fujii, & Sobel, 1994; Mu & Higgins, 1995). The mRNA levels of these genes were elevated in Sox2-TK mice after GCV treatment, although in the case of *Ink4a* the increase did not reach statistical significance (Figure 1h), corroborating the induction of senescence in Sox2-TK tissues.

We reasoned that the premature aging phenotype that we were observing was only partial and moderate probably due to the short protocol of GCV treatment under which we were examining the effect of the partial depletion of adult progenitor/stem Sox2+ cells. To test this hypothesis, we decided to subject our mice to a longer protocol of around 1 year of repetitive partial depletion of Sox2+ adult cells by injecting GCV intraperitoneally in Sox2-TK mice every 2 weeks, starting at 8 weeks of age and until they were 54 weeks old (Figure 2a). Control mice were equally injected with vehicle, HBSS. During the course of the experiment, we observed a progressive decline in spontaneous activity and exploratory behavior in the GCV-treated mice. We stopped GCV administration after 24

injections and sacrificed the animals when they were 56 weeks of age. GCV-treated mice showed a clearly reduced total body mass (Figure 2b), and when we determined lean to fat body mass using echoMRI, we observed a clear reduction of fat mass (Figure 2c) in GCV-treated mice compared to HBSS control mice, in agreement with our observations for the shorter depletion protocol. We then analyzed the expression of SABetaGal to test for the accumulation of senescent cells in kidney tissue sections and observed a strong positive staining in samples from GCV-treated mice compared to control samples that were, for the most part, negative (Figure 2d). Indeed, quantification of SABetaGal positive cells in various sections from kidneys extracted from different animals revealed a massive induction of cell senescence after GCV treatment (Figure 2e). To confirm this result, we used again the alternative luminescence substrate for SABetaGal activity, Galacton. In agreement with the X-Gal data, Galacton revealed a massive induction of senescence in the kidneys of GCV-treated mice (Figure 2f). We also measured the mRNA expression of different genes linked to the senescent cell response, such as *Ink4a* (Krishnamurthy et al., 2004), *Ink4b* (Malumbres et al., 2000), *Il6* (Acosta et al., 2008; Kuilman et al., 2008), *Mmp1* (Benanti, Williams, Robinson, Ozer, & Galloway, 2002), *Serpine1* (Goldstein et al., 1994; Mu & Higgins, 1995), and *Timp1* (Komosinska-Vashev et al., 2011). In all cases, we observed a statistically significant increase in the levels of mRNA for these genes, in agreement with the notion of a strong induction of senescence, a response typically associated with advanced aging (Figure 2g).

These observations demonstrate that promoting adult stem cell depletion can lead to a systemic response that can trigger senescence induction and premature aging of tissues, pointing to stem cell exhaustion as a causal factor in physiological aging.

ACKNOWLEDGMENTS

We thank María Otero for expert assistance with histological analysis. We are indebted to Konrad Hochedlinger for Sox2-TK ES cells. J.M.V. is a Xunta de Galicia predoctoral fellow. A.F. is an FPU predoctoral fellow from MEC. M.C. is a "Miguel Servet II" investigator (CPII16/00015).

CONFLICT OF INTEREST

None declared.

REFERENCES

- Acosta, J. C., O'Loughlen, A., Banito, A., Guijarro, M. V., Augert, A., Raguz, S., ... Gil, J. (2008). Chemokine signaling via the CXCR1 receptor reinforces senescence. *Cell*, 133, 1006–1018. <https://doi.org/10.1016/j.cell.2008.03.038>
- Arnold, K., Sarkar, A., Yram, M. A., Polo, J. M., Bronson, R., Sengupta, S., ... Hochedlinger, K. (2011). Sox2+ adult stem and progenitor cells are important for tissue regeneration and survival of mice. *Cell Stem Cell*, 9, 317–329. <https://doi.org/10.1016/j.stem.2011.09.001>
- Aubert, J., Stavridis, M.P., Tweedie, S., O'Reilly, M., Vierlinger, K., Li, M., ...Smith A. (2003). Screening for mammalian neural genes via

- fluorescence-activated cell sorter purification of neural precursors from Sox1-gfp knock-in mice. *Proceedings of the National Academy of Sciences of the United States*. 100, 11836–11841
- Bassaneze, V., Miyakawa, A. A., & Krieger, J. E. (2008). A quantitative chemiluminescent method for studying replicative and stress-induced premature senescence in cell cultures. *Analytical Biochemistry*, 372, 198–203. <https://doi.org/10.1016/j.ab.2007.08.016>
- Benanti, J. A., Williams, D. K., Robinson, K. L., Ozer, H. L., & Galloway, D. A. (2002). Induction of extracellular matrix-remodeling genes by the senescence-associated protein APA-1. *Molecular and Cellular Biology*, 22, 7385–7397. <https://doi.org/10.1128/MCB.22.21.7385-7397.2002>
- Carrasco-Garcia, E., Moreno-Cugnon, L., Garcia, I., Borrás, C., Revuelta, M., Izeta, A., ... Matheu, A. (2018). SOX2 expression diminishes with ageing in several tissues in mice and humans. *Mechanisms of Ageing and Development*, Mar 21. pii: S0047-6374(17)30294-4. <https://doi.org/10.1016/j.mad.2018.03.008>
- Dimri, G. P., Lee, X., Basile, G., Acosta, M., Scott, G., Roskelley, C., ... Pereira-Smith, O. (1995). A biomarker that identifies senescent human cells in culture and in aging skin in vivo. *Proceedings of the National Academy of Sciences USA*, 92, 9363–9367. <https://doi.org/10.1073/pnas.92.20.9363>
- Doetzlhofer, A., White, P., Lee, Y.-S., Groves, A., & Segil, N. (2006). Prospective identification and purification of hair cell and supporting cell progenitors from the embryonic cochlea. *Brain Research*. 1091, 282–288
- Finch, C. E. (1973). Retardation of hair regrowth, a phenomenon of senescence in C57B1-6J male mice. *Journal of Gerontology*, 28, 13–17. <https://doi.org/10.1093/geronj/28.1.13>
- Goldstein, S., Moerman, E. J., Fujii, S., & Sobel, B. E. (1994). Overexpression of plasminogen activator inhibitor type-1 in senescent fibroblasts from normal subjects and those with Werner syndrome. *Journal of Cellular Physiology*, 161, 571–579. <https://doi.org/10.1002/jcp.1041610321>
- Goodell, M. A., & Rando, T. A. (2015). Stem cells and healthy aging. *Science*, 350, 1199–1204. <https://doi.org/10.1126/science.aab3388>
- Gosden, R. G., Richardson, D. W., Brown, N., & Davidson, D. W. (1982). Structure and gametogenic potential of seminiferous tubules in ageing mice. *Journal of Reproduction and Fertility*, 64, 127–133. <https://doi.org/10.1530/jrf.0.0640127>
- Graham, V., Khudyakov, J., Ellis, P., & Pevny, L. (2003). SOX2 functions to maintain neural progenitor identity. *Neuron* 39, 749–765.
- Harkema, L., Youssef, S. A., & de Bruin, A. (2016). Pathology of mouse models of accelerated aging. *Veterinary Pathology*, 53, 366–389. <https://doi.org/10.1177/0300985815625169>
- Jeyapalan, J. C., & Sedivy, J. M. (2008). Cellular senescence and organismal aging. *Mechanisms of Ageing and Development*, 129, 467–474. <https://doi.org/10.1016/j.mad.2008.04.001>
- Klassen, H., Ziaian, B., Kirov, I.I., Young, M.J., & Schwartz, P.H. (2004). Isolation of retinal progenitor cells from post-mortem human tissue and comparison with autologous brain progenitors. *Journal of Neuroscience Research*. 77, 334–343.
- Komosinska-Vassev, K., Olczyk, P., Winsz-Szczotka, K., Kuznik-Trocha, K., Klimek, K., & Olczyk, K. (2011). Age- and gender-dependent changes in connective tissue remodeling: Physiological differences in circulating MMP-3, MMP-10, TIMP-1 and TIMP-2 level. *Gerontology*, 57, 44–52. <https://doi.org/10.1159/000295775>
- Krishnamurthy, J., Torrice, C., Ramsey, M. R., Kovalev, G. I., Al-Regaiey, K., Su, L., & Sharpless, N. E. (2004). Ink4a/Arf expression is a biomarker of aging. *Journal of Clinical Investigation*, 114, 1299–1307. <https://doi.org/10.1172/JCI22475>
- Kuilman, T., Michaloglou, C., Vredeveld, L. C. W., Douma, S., van Doorn, R., Desmet, C. J., ... Peeper, D. S. (2008). Oncogene-induced senescence relayed by an interleukin-dependent inflammatory network. *Cell*, 133, 1019–1031. <https://doi.org/10.1016/j.cell.2008.03.039>
- López-Otín, C., Blasco, M. A., Partridge, L., Serrano, M., & Kroemer, G. (2013). The hallmarks of aging. *Cell*, 153, 1194–1217. <https://doi.org/10.1016/j.cell.2013.05.039>
- Malumbres, M., Pérez De Castro, I., Hernández, M. I., Jiménez, M., Corral, T., & Pellicer, A. (2000). Cellular response to oncogenic ras involves induction of the Cdk4 and Cdk6 inhibitor p15(INK4b). *Molecular and Cellular Biology*, 20, 2915–2925. <https://doi.org/10.1128/MCB.20.8.2915-2925.2000>
- Mu, X.-C., & Higgins, P. J. (1995). Differential growth state-dependent regulation of plasminogen activator inhibitor type-1 expression in senescent IMR-90 human diploid fibroblasts. *Journal of Cellular Physiology*, 165, 647–657. <https://doi.org/10.1002/jcp.1041650324>
- Orkin, S. H., Wang, J., Kim, J., Chu, J., Rao, S., Theunissen, T. W., ... Levasseur, D. N. (2008). The transcriptional network controlling pluripotency in ES cells. *Cold Spring Harbor Symposia on Quantitative Biology*, 73, 195–202. <https://doi.org/10.1101/sqb.2008.72.001>
- Rizzino, A. (2013). Concise review: The Sox2-Oct4 connection: Critical players in a much larger interdependent network integrated at multiple levels. *Stem Cells*, 31, 1033–1039. <https://doi.org/10.1002/stem.1352>
- Schultz, M. B., & Sinclair, D. A. (2016). When stem cells grow old: Phenotypes and mechanisms of stem cell aging. *Development*, 143, 3–14. <https://doi.org/10.1242/dev.130633>
- Sharpless, N. E., & DePinho, R. A. (2007). How stem cells age and why this makes us grow old. *Nature Reviews Molecular Cell Biology*, 8, 703–713. <https://doi.org/10.1038/nrm2241>
- Zhang, Y., Jiang, M., Kim, E., Lin, S., Liu, K., Lan, X., & Que, J. (2017). Development and stem cells of the esophagus. *Seminars in Cell & Developmental Biology*, 66, 25–35. <https://doi.org/10.1016/j.semcdb.2016.12.008>

SUPPORTING INFORMATION

Additional supporting information may be found online in the Supporting Information section at the end of the article.

How to cite this article: Vilas JM, Carneiro C, Da Silva-Álvarez S, et al. Adult Sox2+ stem cell exhaustion in mice results in cellular senescence and premature aging. *Aging Cell*. 2018;17:e12834. <https://doi.org/10.1111/ace1.12834>