

# **INTRODUCTION TO COMPUTATIONAL METHODS**

**Nazaruddin Sinaga**

**Laboratorium Efisiensi dan Konservasi Energi  
Fakultas Teknik Universitas Diponegoro**

- Fluid (gas and liquid) flows are governed by partial differential equations which represent conservation laws for the mass, momentum, and energy.
- Computational Fluid Dynamics (CFD) is the art of replacing such PDE systems by a set of algebraic equations which can be solved using digital computers.

## What is fluid flow?

Fluid flows encountered in everyday life include

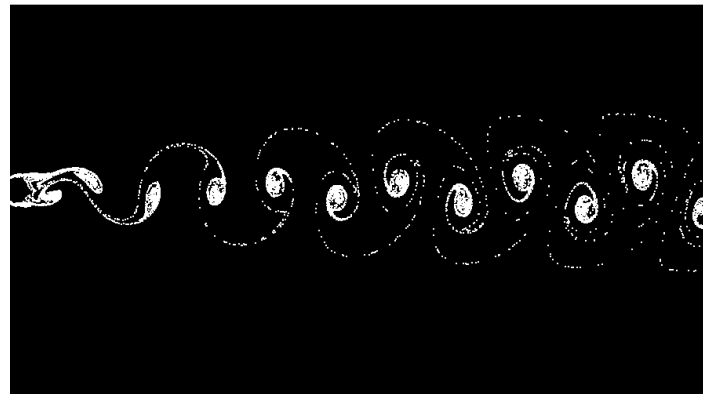
- meteorological phenomena (rain, wind, hurricanes, floods, fires)
- environmental hazards (air pollution, transport of contaminants)
- heating, ventilation and air conditioning of buildings, cars etc.
- combustion in automobile engines and other propulsion systems
- interaction of various objects with the surrounding air/water
- complex flows in furnaces, heat exchangers, chemical reactors etc.
- processes in human body (blood flow, breathing, drinking ...)
- and so on and so forth

## What is CFD?

Computational Fluid Dynamics (CFD) provides a qualitative (and sometimes even quantitative) prediction of fluid flows by means of

- mathematical modeling (partial differential equations)
- numerical methods (discretization and solution techniques)
- software tools (solvers, pre- and postprocessing utilities)

CFD enables scientists and engineers to perform ‘numerical experiments’ (i.e. computer simulations) in a ‘virtual flow laboratory’



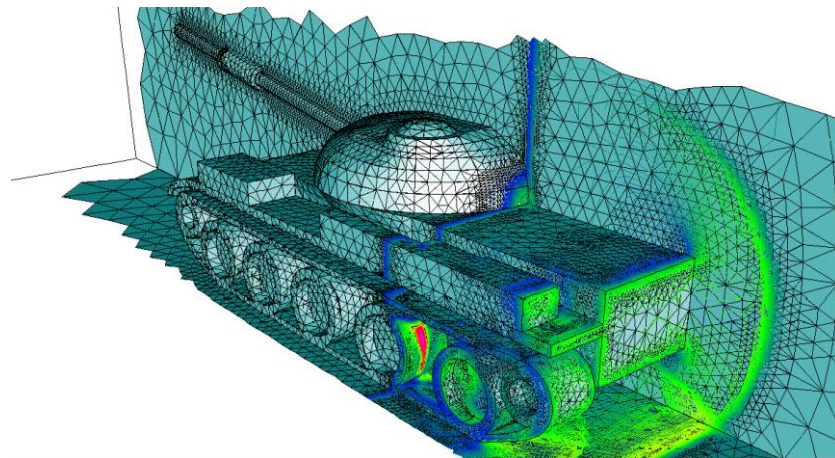
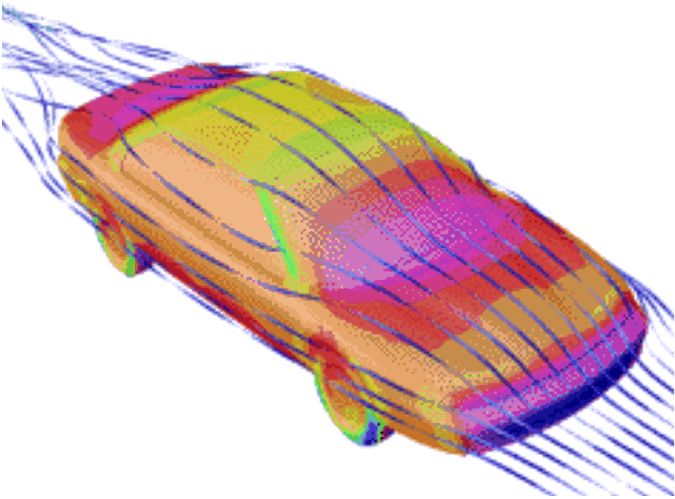
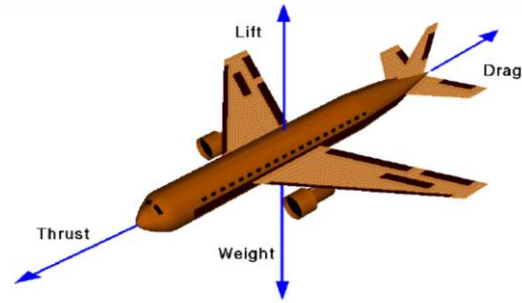
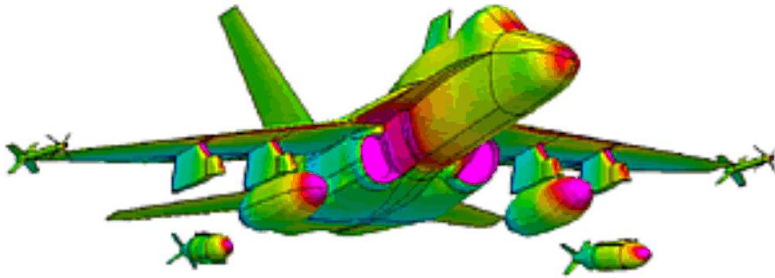
## Why use CFD?

Numerical simulations of fluid flow (will) enable

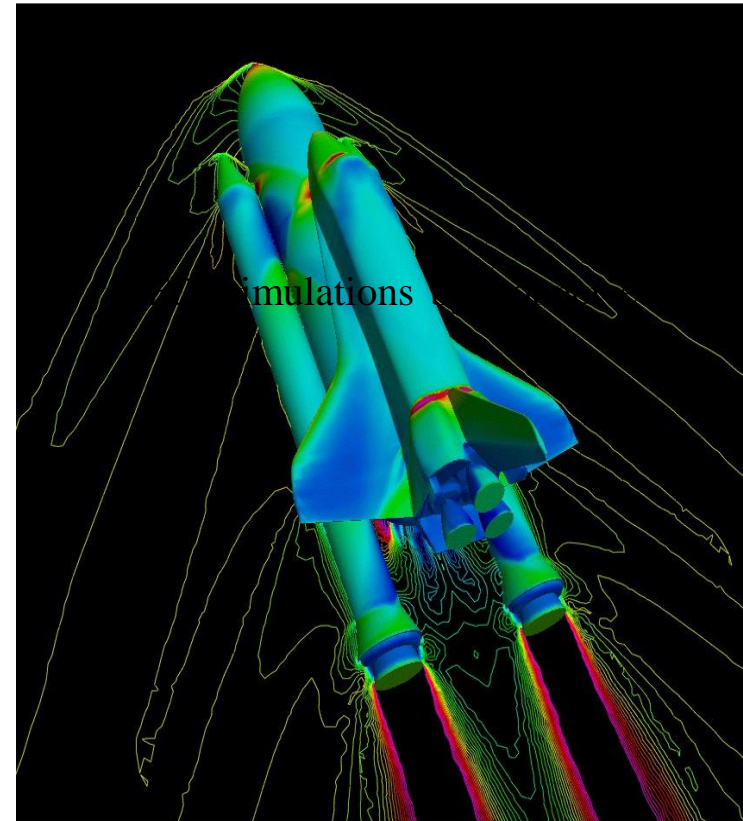
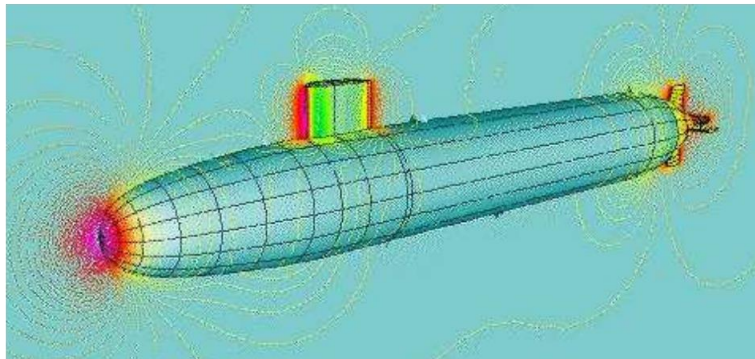
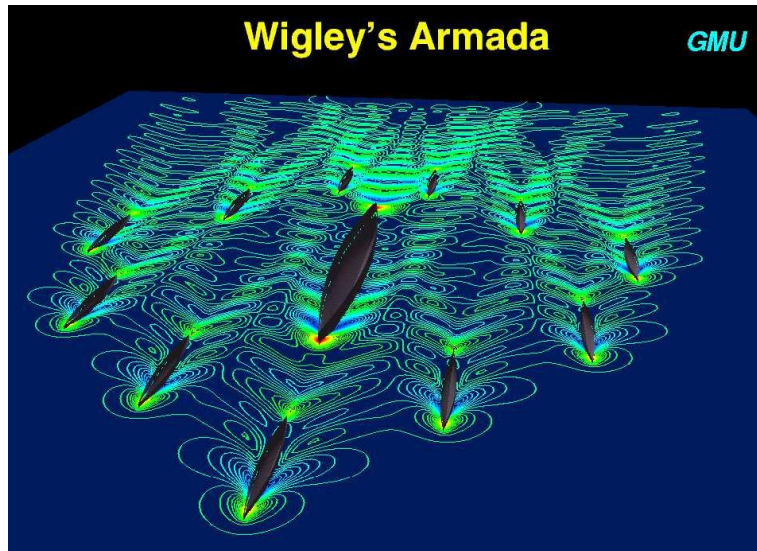
- architects to design comfortable and safe living environments
- designers of vehicles to improve the aerodynamic characteristics
- chemical engineers to maximize the yield from their equipment
- petroleum engineers to devise optimal oil recovery strategies
- surgeons to cure arterial diseases (computational hemodynamics)
- meteorologists to forecast the weather and warn of natural disasters
- safety experts to reduce health risks from radiation and other hazards
- military organizations to develop weapons and estimate the damage
- CFD practitioners to make big bucks by selling colorful pictures :-)

## Examples of CFD Application

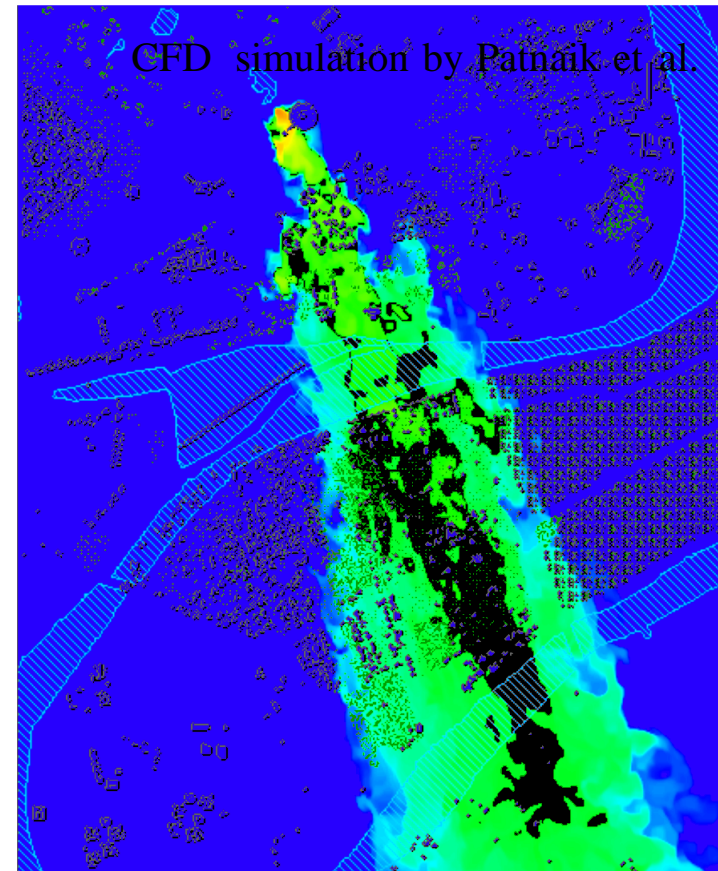
Aerodynamic shape design



## Examples of CFD applications



## Examples of CFD applications





## Experiments vs. Simulations

CFD gives an insight into flow patterns that are difficult, expensive or impossible to study using traditional (experimental) techniques

<b>Experiments</b>	<b>Simulations</b>
<p data-bbox="423 635 1025 735">Quantitative description of flow phenomena using measurements</p> <ul data-bbox="465 783 1104 1182" style="list-style-type: none"><li data-bbox="465 783 981 826">• for one quantity at a time</li><li data-bbox="465 868 1048 959">• at a limited number of points time instants</li><li data-bbox="465 1000 1037 1043">• for a laboratory-scale model</li><li data-bbox="465 1085 1104 1182">• for a limited range of problems and operating conditions</li></ul> <p data-bbox="423 1224 1093 1315">Error sources: measurement errors, flow disturbances by the probes</p>	<p data-bbox="1149 635 1798 735">Quantitative prediction of flow phenomena using CFD software</p> <ul data-bbox="1216 783 1877 1182" style="list-style-type: none"><li data-bbox="1216 783 1731 826">• for all desired quantities</li><li data-bbox="1216 868 1776 959">• with high resolution in and space and time</li><li data-bbox="1216 1000 1787 1043">• for the actual flow domain</li><li data-bbox="1216 1085 1877 1182">• for virtually any problem and realistic operating conditions</li></ul> <p data-bbox="1196 1224 1899 1315">Error sources: modeling, discretization, iteration, implementation</p>

## Experiments vs. Simulations

As a rule, CFD does not replace the measurements completely but the amount of experimentation and the overall cost can be significantly reduced.

Experiments	Simulations
<ul style="list-style-type: none"><li>• expensive</li><li>• slow</li><li>• sequential</li><li>• single-purpose</li></ul>	<ul style="list-style-type: none"><li>• cheap(er)</li><li>• fast(er)</li><li>• parallel</li><li>• multiple-purpose</li></ul>

Equipment and personnel are difficult to transport

CFD software is portable, easy to use and modify

The results of a CFD simulation are never 100% reliable because

- the input data may involve too much guessing or imprecision
- the mathematical model of the problem at hand may be inadequate
- the accuracy of the results is limited by the available computing power

## Fluid characteristics

### Macroscopic properties

$\rho$	density
$\mu$	viscosity
$p$	pressure
$T$	temperature
$v$	velocity

### Classification of fluid flows

viscous	inviscid
compressible	incompressible
steady	unsteady
laminar	turbulent
single-phase	multiphase

The reliability of CFD simulations is greater

- for laminar/slow flows than for turbulent/fast ones
- for single-phase flows than for multi-phase flows
- for chemically inert systems than for reactive flows



## How does CFD make predictions?

CFD uses a computer to solve the mathematical equations for the problem at hand. The main components of a CFD design cycle are as follows:

- the human being (analyst) who states the problem to be solved
- scientific knowledge (models, methods) expressed mathematically
- the computer code (software) which embodies this knowledge and provides detailed instructions (algorithms) for
- the computer hardware which performs the actual calculations
- the human being who inspects and interprets the simulation results

CFD is a highly interdisciplinary research area which lies at the interface of physics, applied mathematics, and computer science

## CFD analysis process

1. Problem statement      information about the flow
2. Mathematical model      IBVP = PDE + IC + BC
3. Mesh generation      nodes/cells, time instants
4. Space discretization      coupled ODE/DAE systems
5. Time discretization      algebraic system  $Ax = b$
6. Iterative solver      discrete function values
7. CFD software      implementation, debugging
8. Simulation run      parameters, stopping criteria
9. Postprocessing      visualization, analysis of data
10. Verification      model validation / adjustment

## Problem statement

- What is known about the flow problem to be dealt with?
- What physical phenomena need to be taken into account?
- What is the geometry of the domain and operating conditions?
- Are there any internal obstacles or free surfaces/interfaces?
- What is the type of flow (laminar/turbulent, steady/unsteady)?
- What is the objective of the CFD analysis to be performed?
  - computation of integral quantities (lift, drag, yield)
  - snapshots of field data for velocities, concentrations etc.
  - shape optimization aimed at an improved performance
- What is the easiest/cheapest/fastest way to achieve the goal?

## Mathematical model

1. Choose a suitable flow model (viewpoint) and reference frame.
2. Identify the forces which cause and influence the fluid motion.
3. Define the computational domain in which to solve the problem.
4. Formulate conservation laws for the mass, momentum, and energy.
5. Simplify the governing equations to reduce the computational effort:
  - use available information about the prevailing flow regime
  - check for symmetries and predominant flow directions (1D/2D)
  - neglect the terms which have little or no influence on the results
  - model the effect of small-scale fluctuations that cannot be captured
  - incorporate a priori knowledge (measurement data, CFD results)
6. Add constitutive relations and specify initial/boundary conditions.

## Discretization process

The PDE system is transformed into a set of algebraic equations

1. Mesh generation (decomposition into cells/elements)
  - structured or unstructured, triangular or quadrilateral?
  - CAD tools + grid generators (Delaunay, advancing front)
  - mesh size, adaptive refinement in ‘interesting’ flow regions
2. Space discretization (approximation of spatial derivatives)
  - finite differences/volumes/elements
  - high- vs. low-order approximations
3. Time discretization (approximation of temporal derivatives)
  - explicit vs. implicit schemes, stability constraints
  - local time-stepping, adaptive time step control



## Iterative solution strategy

The coupled nonlinear algebraic equations must be solved iteratively

- Outer iterations: the coefficients of the discrete problem are updated using the solution values from the previous iteration so as to
  - get rid of the nonlinearities by a Newton-like method
  - solve the governing equations in a segregated fashion
- Inner iterations: the resulting sequence of linear subproblems is typically solved by an iterative method (conjugate gradients, multigrid) because direct solvers (Gaussian elimination) are prohibitively expensive
- Convergence criteria: it is necessary to check the residuals, relative solution changes and other indicators to make sure that the iterations converge.

As a rule, the algebraic systems to be solved are very large (millions of unknowns) but sparse, i.e., most of the matrix coefficients are equal to zero.

## CFD simulations

The computing times for a flow simulation depend on

- the choice of numerical algorithms and data structures
- linear algebra tools, stopping criteria for iterative solvers
- discretization parameters (mesh quality, mesh size, time step)
- cost per time step and convergence rates for outer iterations
- programming language (most CFD codes are written in Fortran)
- many other things (hardware, vectorization, parallelization etc.)

The quality of simulation results depends on

- the mathematical model and underlying assumptions
- approximation type, stability of the numerical scheme
- mesh, time step, error indicators, stopping criteria ...



## Postprocessing and analysis

Postprocessing of the simulation results is performed in order to extract the desired information from the computed flow field

- calculation of derived quantities (streamfunction, vorticity)
- calculation of integral parameters (lift, drag, total mass)
- visualization (representation of numbers as images)
  - 1D data: function values connected by straight lines
  - 2D data: streamlines, contour levels, color diagrams
  - 3D data: cutlines, cutplanes, isosurfaces, isovolumes
  - arrow plots, particle tracing, animations ...
- Systematic data analysis by means of statistical tools
- Debugging, verification, and validation of the CFD model

## Uncertainty and error

Whether or not the results of a CFD simulation can be trusted depends on the degree of uncertainty and on the cumulative effect of various errors

- Uncertainty is defined as a potential deficiency due to the lack of knowledge (turbulence modeling is a classical example)
- Error is defined as a recognizable deficiency due to other reasons
  - Acknowledged errors have certain mechanisms for identifying, estimating and possibly eliminating or at least alleviating them
  - Unacknowledged errors have no standard procedures for detecting them and may remain undiscovered causing a lot of harm
  - Local errors refer to solution errors at a single grid point or cell
  - Global errors refer to solution errors over the entire flow domain

Local errors contribute to the global error and may move throughout the grid.

## Classification of errors

### Acknowledged errors

- Physical modeling error due to uncertainty and deliberate simplifications
- Discretization error ← approximation of PDEs by algebraic equations
  - spatial discretization error due to a finite grid resolution
  - temporal discretization error due to a finite time step size
- Iterative convergence error which depends on the stopping criteria
- Round-off errors due to the finite precision of computer arithmetic

### Unacknowledged errors

- Computer programming error: “bugs” in coding and logical mistakes
- Usage error: wrong parameter values, models or boundary conditions

Awareness of these error sources and an ability to control or preclude the error are important prerequisites for developing and using CFD software

## Verification of CFD codes

Verification amounts to looking for errors in the implementation of the models (loosely speaking, the question is: “are we solving the equations right”?)

- Examine the computer programming by visually checking the source code, documenting it and testing the underlying subprograms individually
- Examine iterative convergence by monitoring the residuals, relative changes of integral quantities and checking if the prescribed tolerance is attained
- Examine consistency (check if relevant conservation principles are satisfied)
- Examine grid convergence: as the mesh and/or the time step are refined, the spatial and temporal discretization errors, respectively, should asymptotically approach zero (in the absence of round-off errors)
- Compare the computational results with analytical and numerical solutions for standard benchmark configurations (representative test cases)

## Validation of CFD models

Validation amounts to checking if the model itself is adequate for practical purposes (loosely speaking, the question is: “are we solving the right equations”?)

- Verify the code to make sure that the numerical solutions are correct.
- Compare the results with available experimental data (making a provision for measurement errors) to check if the reality is represented accurately enough.
- Perform sensitivity analysis and a parametric study to assess the inherent uncertainty due to the insufficient understanding of physical processes.
- Try using different models, geometry, and initial/boundary conditions.
- Report the findings, document model limitations and parameter settings.

The goal of verification and validation is to ensure that the CFD code produces reasonable results for a certain range of flow problems.

## Available CFD software

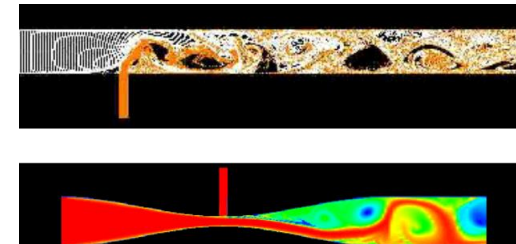
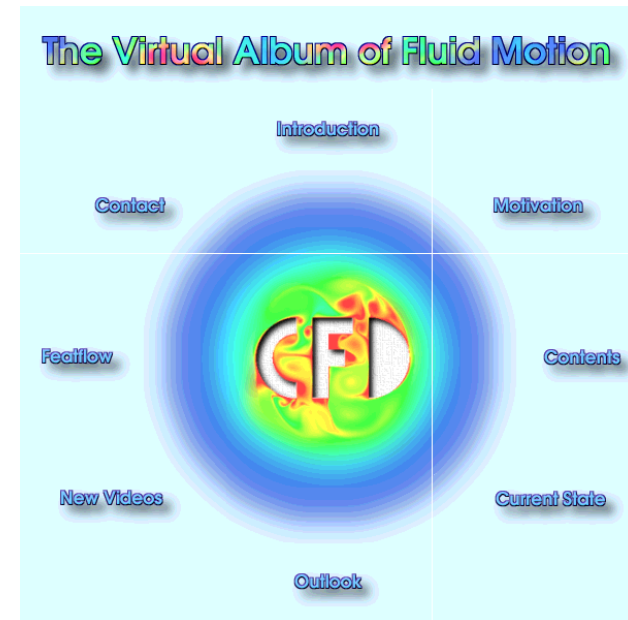
ANSYS CFX	<a href="http://www.ansys.com">http://www.ansys.com</a>	commercial
FLUENT	<a href="http://www.fluent.com">http://www.fluent.com</a>	commercial
STAR-CD	<a href="http://www.cd-adapco.com">http://www.cd-adapco.com</a>	commercial
FEMLAB	<a href="http://www.comsol.com">http://www.comsol.com</a>	commercial
FEATFLOW	<a href="http://www.featflow.de">http://www.featflow.de</a>	open-source

- As of now, CFD software is not yet at the level where it can be blindly used by designers or analysts without a basic knowledge of the underlying numerics.
- Experience with numerical solution of simple ‘toy problems’ makes it easier to analyze strange looking simulation results and identify the source of troubles.
- New mathematical models (e.g., population balance equations for disperse systems) require modification of existing / development of new CFD tools.



## Structure of the course

1. Introduction, flow models.
2. Equations of fluid mechanics.
3. Finite Difference Method.
4. Finite Volume Method.
5. Finite Element Method.
6. Implementation of FEM.
7. Time-stepping techniques.
8. Properties of numerical methods.
9. Taylor-Galerkin schemes for pure convection.
10. Operator-splitting / fractional step methods.
11. MPSC techniques / Navier-Stokes equations.
12. Algebraic flux correction / Euler equations.



## Literature

1. CFD-Wiki [http://www.cfd-online.com/Wiki/Main\\_Page](http://www.cfd-online.com/Wiki/Main_Page)
2. J. H. Ferziger and M. Peric, Computational Methods for Fluid Dynamics. Springer, 1996.
3. C. Hirsch, Numerical Computation of Internal and External Flows. Vol. I and II. John Wiley & Sons, Chichester, 1990.
4. P. Wesseling, Principles of Computational Fluid Dynamics. Springer, 2001.
5. C. Cuvelier, A. Segal and A. A. van Steenhoven, Finite Element Methods and Navier-Stokes Equations. Kluwer, 1986.
6. S. Turek, Efficient Solvers for Incompressible Flow Problems: An Algorithmic and Computational Approach, LNCSE 6, Springer, 1999.
7. R. Löhner, Applied CFD Techniques: An Introduction Based on Finite Element Methods. John Wiley & Sons, 2001.
8. J. Donea and A. Huerta, Finite Element Methods for Flow Problems. John Wiley & Sons, 2003.

9. **Y. A. Cengel.** *Heat Transfer: A Practical Approach*, Mc Graw-Hill Education, New York, 2007.
10. **F. Kreith.** *Principles of Heat Transfer*. Harper International Edition, New York, 1985
11. **J. P. Holman.** *Heat Transfer*, Mc Graw-Hill Book Company, New York, 1996.
12. **S. Kakac & Y. Yener.** *Convective Heat Transfer*. CRC Press, Boca Raton, 1995.
13. **Sinaga, Nazaruddin, A. Suwono, Sularso, and P. Sutikno.** *Kaji Numerik dan Eksperimental Pembentukan Horseshoe Vortex pada Pipa Bersirip Anular*, Prosiding, Seminar Nasional Teknik Mesin II, Universitas Andalas, Padang, Desember 2003
14. **Sinaga, Nazaruddin, A. Suwono dan Sularso.** *Pengamatan Visual Pembentukan Horseshoe Vortex pada Susunan Geometri Pipa Bersirip Anular*, Prosiding, Seminar Nasional Teknik Mesin II, Universitas Andalas, Padang, Desember 2003.
15. **Sinaga, Nazaruddin.** *Pengaruh Parameter Geometri dan Konfigurasi Berkas Pipa Bersirip Anular Terhadap Posisi Separasi di Permukaan Sirip*, Jurnal Ilmiah Poros, Jurusan Teknik Mesin FT Universitas Tarumanegara, Vol. 9 No. 1, Januari, 2006.
16. **Cahyono, Sukmaji Indro, Gwang-Hwan Choe, and Nazaruddin Sinaga.** *Numerical Analysis Dynamometer (Water Brake) Using Computational Fluid Dynamic Software*. Proceedings of the Korean Solar Energy Society Conference, 2009.
17. **Sinaga, Nazaruddin.** *Pengaruh Model Turbulensi Dan Pressure-Velocity Coupling Terhadap Hasil Simulasi Aliran Melalui Katup Isap Ruang Bakar Motor Bakar*, Jurnal Rotasi, Volume 12, Nomor 2, ISSN:1411-027X, April 2010.
18. **Nazaruddin Sinaga, Abdul Zahri.** *Simulasi Numerik Perhitungan Tegangan Geser Dan Momen Pada Fuel Flowmeter Jenis Positive Displacement Dengan Variasi Debit Aliran Pada Berbagai Sudut Putar Rotor*, Jurnal Teknik Mesin S-1, Vol. 2, No. 4, Tahun 2014.
19. **Nazaruddin Sinaga.** *Kaji Numerik Aliran Jet-Swirling Pada Saluran Annulus Menggunakan Metode Volume Hingga*, Jurnal Rotasi Vol. 19, No. 2, April 2017.

20. **Nazaruddin Sinaga.** *Analisis Aliran Pada Rotor Turbin Angin Sumbu Horizontal Menggunakan Pendekatan Komputasional*, Eksergi, Jurnal Teknik Energi POLINES, Vol. 13, No. 3, September 2017.
21. **Muchammad, M., Sinaga, N., Yuniato, B., Noorkarim, M.F., Tauviqirrahman, M.** *Optimization of Texture of The Multiple Textured Lubricated Contact with Slip*, International Conference on Computation in Science and Engineering, Journal of Physics: Conf. Series 1090-012022, 5 November 2018, IOP Publishing, Online ISSN: 1742-6596 Print ISSN: 1742-6588.
22. **Nazaruddin Sinaga, Mohammad Tauviqirrahman, Arif Rahman Hakim, E. Yohana.** *Effect of Texture Depth on the Hydrodynamic Performance of Lubricated Contact Considering Cavitation*, Proceeding of International Conference on Advance of Mechanical Engineering Research and Application (ICOMERA 2018), Malang, October 2018.
23. **Syaiful, N. Sinaga, B. Yuniato, M.S.K.T. Suryo.** *Comparison of Thermal-Hydraulic Performances of Perforated Concave Delta Winglet Vortex Generators Mounted on Heated Plate: Experimental Study and Flow Visualization*, Proceeding of International Conference on Advance of Mechanical Engineering Research and Application (ICOMERA 2018), Malang, October 2018.
24. **Nazaruddin Sinaga, K. Hatta, N. E. Ahmad, M. Mel.** *Effect of Rushton Impeller Speed on Biogas Production in Anaerobic Digestion of Continuous Stirred Bioreactor*, Journal of Advanced Research in Biofuel and Bioenergy, Vol. 3 (1), December 2019, pp. 9-18.
25. **Nazaruddin Sinaga, Syaiful, B. Yuniato, M. Rifal.** *Experimental and Computational Study on Heat Transfer of a 150 KW Air Cooled Eddy Current Dynamometer*, Proc. The 2019 Conference on Fundamental and Applied Science for Advanced Technology (Confast 2019), Yogyakarta, Januari 21, 2019.
26. **Nazaruddin Sinaga.** *CFD Simulation of the Width and Angle of the Rotor Blade on the Air Flow Rate of a 350 kW Air-Cooled Eddy Current Dynamometer*, Proc. The 2019 Conference on Fundamental and Applied Science for Advanced Technology (Confast 2019), Yogyakarta, Januari 21, 2019.
27. **Anggie Restue, Saputra, Syaiful, and Nazaruddin Sinaga.** *2-D Modeling of Interaction between Free-Stream Turbulence and Trailing Edge Vortex*, Proc. The 2019 Conference on Fundamental and Applied Science for Advanced Technology (Confast 2019), Yogyakarta, January 21, 2019.
28. **E. Yohana, B. Farizki, N. Sinaga, M. E. Julianto, I. Hartati.** *Analisis Pengaruh Temperatur dan Laju Aliran Massa Cooling Water Terhadap*

*Efektivitas Kondensor di PT. Geo Dipa Energi Unit Dieng*, Journal of Rotasi, Vol. 21 No. 3, 155-159.

29. **B. Yudianto, F. B. Hasugia, B. F. T. Kiono, N. Sinaga.** *Performance Test of Indirect Evaporative Cooler by Primary Air Flow Rate Variations*, Prosiding SNTTM XVIII, 9-10 Oktober 2019, 1-7.