

## Research paper

# Effects of deferred forage as winter cover on spring growth of the tropical grasses *Chloris gayana* and *Panicum coloratum*

## Efectos del forraje diferido como cobertura de invierno en el crecimiento primaveral de las gramíneas tropicales *Chloris gayana* y *Panicum coloratum*

JOSÉ A. IMAZ<sup>1,2</sup>, VÍCTOR MERANI<sup>3</sup>, DANIEL DOS SANTOS<sup>4</sup>, MARCELO BENVENUTTI<sup>5</sup>, DANIEL O. GIMÉNEZ<sup>3</sup>, OLEGARIO HERNÁNDEZ<sup>2</sup> AND JOSÉ I. ARROQUY<sup>6</sup>

<sup>1</sup>Centre for Carbon, Water & Food, Faculty of Agriculture and Environment, The University of Sydney, Australia. <http://sydney.edu.au/agriculture/research/ccwf/>

<sup>2</sup>Instituto de Investigación Animal del Chaco Semiárido (IIACS), Instituto Nacional de Tecnología Agropecuaria (INTA), Leales, Tucumán, Argentina. <http://inta.gob.ar/iiacs>

<sup>3</sup>Instituto de Fisiología Vegetal (INFIVE-CONICET), Facultad de Agronomía, Universidad Nacional de La Plata, La Plata, Buenos Aires, Argentina. [www.agro.unlp.edu.ar](http://www.agro.unlp.edu.ar)

<sup>4</sup>Instituto de Biodiversidad Neotropical (IBN), CONICET-UNT, Yerba Buena, Tucumán, Argentina. [www.ibn-conicet.gob.ar](http://www.ibn-conicet.gob.ar)

<sup>5</sup>University of Queensland, Gatton Campus, Lawes, Queensland, Australia. <http://gatton.uq.edu.au>

<sup>6</sup>Instituto Nacional de Tecnología Agropecuaria (INTA), EEA Santiago del Estero, Santiago del Estero, Argentina. <http://inta.gob.ar/santiago>

## Abstract

This pot study assessed the effects of deferring forage during autumn and leaving as winter cover on reducing cold damage to plants of 2 tropical (C4) grasses (*Chloris gayana* and *Panicum coloratum*) in a temperate environment in La Plata, Buenos Aires, Argentina. Mature plants were subjected to the following treatments: (i) autumn-deferred forage retained (DF) as control; and (ii) autumn-deferred forage removed (DFR) cutting at 15 cm from soil level at beginning of winter. This experiment had 10 replicates per treatment and 1 plant per pot (experimental unit). Plants of both species were extracted from a commercial beef farm and transplanted into an experimental garden in pots where they grew outdoors from 2 February to 23 May (111 days) when treatments were applied. After winter, both grasses were cut to 15 cm in early spring (27 September) and spring growth was measured in November. Shoot biomass was harvested at ground level and separated into lower and upper layers (above and below 15 cm), leaf blades, sheaths and stolons. Daily air temperature, relative humidity and frost events were registered. Allometric analysis of shoot biomass was performed to determine the stress incidence by cold. DF plants achieved 55–80% higher shoot biomass than DFR plants during spring in both species. The allometric analysis revealed for *P. coloratum* significant relationships between shoot biomass from plant compartments (lower and upper layers, leaf blade and sheath) and total shoot biomass in both treatments, indicating good cold tolerance. However, for *C. gayana*, unlike DF plants, DFR plants were strongly stressed, showing a lack of shoot biomass fit. These results suggest that deferring autumn forage growth and retaining as winter cover may improve survival during winter and productivity during spring of these two tropical grasses in temperate pastoral systems. However, the study needs to be repeated under field conditions and under grazing or cutting over a number of years in different situations to verify these preliminary results.

**Keywords:** Winter cover, cold damage, frost protection, pasture management.

Correspondence: J.A. Imaz, Instituto de Investigación Animal del Chaco Semiárido (IIACS), Instituto Nacional de Tecnología Agropecuaria (INTA), Chañar Pozo s/n, Leales, Tucumán, Argentina.  
Email: [augusto.imaz@sydney.edu.au](mailto:augusto.imaz@sydney.edu.au)

## Resumen

En La Plata, Buenos Aires, Argentina, en un experimento en macetas a aire libre (condiciones de luz y temperatura naturales) se evaluó el efecto del forraje diferido como cobertura invernal en 2 gramíneas tropicales C4 (*Chloris gayana* y *Panicum coloratum*). Plantas adultas fueron extraídas de un establecimiento ganadero, trasplantadas a macetas en un jardín experimental y, después de crecer durante 111 días, sometidas el 23 de Mayo a los tratamientos: (1) control [sin remoción del forraje diferido de otoño (DF)]; y (2) remoción del forraje diferido de otoño (DFR) después de un corte a 15 cm del suelo. Se utilizaron 10 repeticiones por tratamiento y una planta por maceta (unidad experimental). Las plantas fueron cosechadas el 27 de Septiembre (después del invierno) y nuevamente en Noviembre, mediante corte a ras del suelo, para medir la biomasa del rebrote primaveral en los estratos superior (>15 cm) e inferior (<15 cm sobre el suelo), láminas, vainas y estolones. Se realizó un análisis alométrico para dilucidar la incidencia del estrés por frío y se registraron la temperatura del aire, la humedad relativa y la ocurrencia de heladas. Las plantas con forraje diferido alcanzaron una mayor biomasa (55–80%) que aquellas con remoción del forraje. *Panicum coloratum* mostró un ajuste significativo entre la biomasa total y la biomasa de los diferentes estratos para ambos tratamientos, mostrando buena tolerancia al estrés por frío. Por otro lado, *C. gayana* mostró falta de ajuste de la biomasa y un mayor estrés por la remoción del forraje, mientras que las plantas sin remoción presentaron menor daño por frío y un mayor ajuste. La cobertura invernal del forraje diferido podría mejorar la productividad y supervivencia de estas especies forrajeras cuando son utilizadas en sistemas pastoriles templados. Estos resultados preliminares deben ser evaluados en condiciones de campo durante un mayor número de años, considerando diferentes estrategias de pastoreo.

**Palabras clave:** Cobertura invernal, daño por frío, manejo de pasturas, protección de heladas.

## Introduction

The successful introduction of new forage species into grassland ecosystems or cultivated pasture systems depends on successful establishment, persistence and forage productivity (Baron and Bélanger 2007). In temperate and subtropical areas, tropical (C4) grasses have the potential to increase forage production during summer, when growing conditions are not ideal for C3 temperate grasses (Davies and McNaughton 1980; Johnston 1996; Crush and Rowarth 2007). As well as having better growth potential, some tropical grasses have shown good adaptation to saline soils (Loch et al. 2004), drought conditions (Pitman 2001), soils with low or high pH (Robinson et al. 1993), infertile soils (Loch 1980), seasonal flooding (Baruch 1994; Imaz et al. 2015a) and other environmental stresses, whereas temperate grasses showed poor persistence (Crush and Rowarth 2007). However, most tropical grasses are seriously adversely affected by winter frost, as a result of sub-zero temperatures (freezing stress). Even at temperatures in the range 0–15 °C (chilling stress) (Ivory 1975; Ludlow 1980; Anderson and Wu 2011), these species show little or no growth (Sage and Percy 2000). When suboptimal temperatures are recorded for extended periods (i.e. 2–6 months), significant tissue damage and subsequent plant death can occur (Ludlow 1980; Márquez et al. 2006).

Given the constraints to growth of warm-season grasses imposed by temperate climatic conditions, only those tropical grasses able to tolerate and to survive under winter temperatures, especially minimum temperatures, are likely to become useful. *Chloris gayana* (Rhodes grass) and *P. coloratum* (Klein grass) are C4 grasses of African tropical and subtropical origin (Cook et al. 2005), that have been incorporated in pastures in lowland areas of humid grasslands and cultivated pastures in temperate livestock systems (Loch et al. 2004; Tischler and Ocumpaugh 2004; Crush and Rowarth 2007; Imaz et al. 2012, 2015a). Over recent years this introduction has been facilitated by the extended warm summers and less restrictive winters (i.e. higher minimal temperatures and less risk of frost) resulting from global warming (Long 1999; IPCC 2006; Chapman et al. 2012). Both grasses are cultivated in the United States (Texas), Africa, Australia, Japan, South America and under irrigation in the Middle East (Boschma et al. 2008). They are regarded as tolerant of soil salinity and drought (Dear et al. 2008) and grow satisfactorily in areas experiencing flooding (Boschma et al. 2008). *Chloris gayana* and *P. coloratum* have a lower critical daily mean temperature threshold for growth (8 °C) than other tropical grasses like *Pennisetum ciliare* (syn. *Cenchrus ciliaris*) and *Megathyrsus maximus* (syn. *Panicum maximum*).

While *C. gayana* demonstrates high frost tolerance at plant level and medium tolerance at leaf level, *P. coloratum* has shown a higher ability to maintain its leaves active (tolerance at leaf level) during winter than other tropical grasses (Ludlow 1980). However, leaves of both grasses are damaged at temperatures below  $-2\text{ }^{\circ}\text{C}$  to  $-3\text{ }^{\circ}\text{C}$ , mainly with high air humidity, and plants are killed by temperatures about  $-10\text{ }^{\circ}\text{C}$ . In this sense, while cold tolerance has a major impact on where the species can grow, grazing management designed to protect plants from the direct physical damage of frost and low temperatures could enhance their utilization. We hypothesize that, while making adequate use of the pasture during the growing season, allowing accumulation of forage in late summer and autumn to provide herbage cover in winter (deferred forage) could help to improve pasture survival in winter and productivity in the following spring.

Thus, the aim of this study was to test this hypothesis by evaluating the effects of autumn-deferred forage as winter cover on growth of *P. coloratum* and *C. gayana* in spring under temperate environmental conditions in a pot study. A positive outcome could allow grazing management strategies to be devised to minimize the impact of cold winter temperatures on spring growth. To the best of our knowledge, this is the first attempt to assess the effects of autumn-deferred forage on spring growth of different plant components of these grass species.

## Materials and Methods

### Experimental details

*Chloris gayana* (cv. Finecut; Rhodes grass) and *Panicum coloratum* (cv. Klein) plants were extracted from a commercial beef farm located in Chascomús ( $35^{\circ}34'42.9''\text{ S}$ ,  $58^{\circ}0'49.9''\text{ W}$ ), Buenos Aires province, Argentina, and transplanted into 15 L plastic pots (1 mature plant per pot) filled with a mixture of sand with top soil (1:2) from a lowland grassland of the Flooding Pampa of Argentina (organic carbon 3.3%; further details in Soriano 1991). There were 10 replicates. Pots were transferred to the experimental garden of INFIVE, the Plant Physiology Institute of La Plata National University, Buenos Aires ( $34^{\circ}55'7''\text{ S}$ ,  $57^{\circ}57'17''\text{ W}$ ; 45 masl). In order to avoid nutrient limitation, plants were fertilized with diammonium phosphate (dose equivalent to 150 kg/ha) 10 days after transplanting. Randomly arranged plants grew outdoors for 4 months from late summer (2 February) until late autumn (23 May), when they were subjected to

the following treatments: (i) Control, autumn-deferred forage retained (DF); and (ii) autumn-deferred forage removed (DFR) at 15 cm from top soil. This cutting height corresponds with pasture height at high-intensity grazing or cutting for hay, both of which are common farm practices in late autumn (Chaparro et al. 1995; Sollenberger et al. 2004). All pots were kept at field capacity during the study and plants allowed to grow during winter. In order to promote plant regrowth in early spring, plants were cut again at 15 cm height on 27 September and then allowed to grow during spring. The final harvest was performed when 50% of tillers showed evidence of reproductive structures (Flores et al. 1993), which occurred after 53 (20 November) and 35 (2 November) days for *C. gayana* and *P. coloratum*, respectively.

Daily maximum, minimum and mean air temperatures and relative humidity (RH) were registered by a micrometeorological station located in the experimental garden. Daily mean air temperature and RH were used to calculate the air vapor pressure deficit (VPD; Figure 1) in order to characterize the air evaporative demand during the experimental periods, i.e. late autumn, winter and spring.

### Biomass responses

Shoot dry matter biomass of initial plants was determined at the beginning of the experiment, when treatments were applied (23 May). At the end of spring growth (20 November and 2 November for Rhodes grass and Klein grass, respectively) plants were harvested by cutting at ground level (final harvest) and biomass determined. Biomass from both early winter (only DFR plants) and spring cuts (both species) was registered and used to calculate the total shoot biomass accumulation, considering both cuts (early winter and spring) and the final harvest. Shoot biomass was separated into upper and lower layers (above and below 15 cm) as recorded in previous grazing studies (Imaz et al. 2015b). Stolons were separated only in *C. gayana*. Subsequently, shoot biomass was divided into leaf blades and sheaths. There was no root accumulation at the bottom of the pots at the final harvest, which suggested no potential constraints on plant growth due to pot size (Poorter et al. 2012).

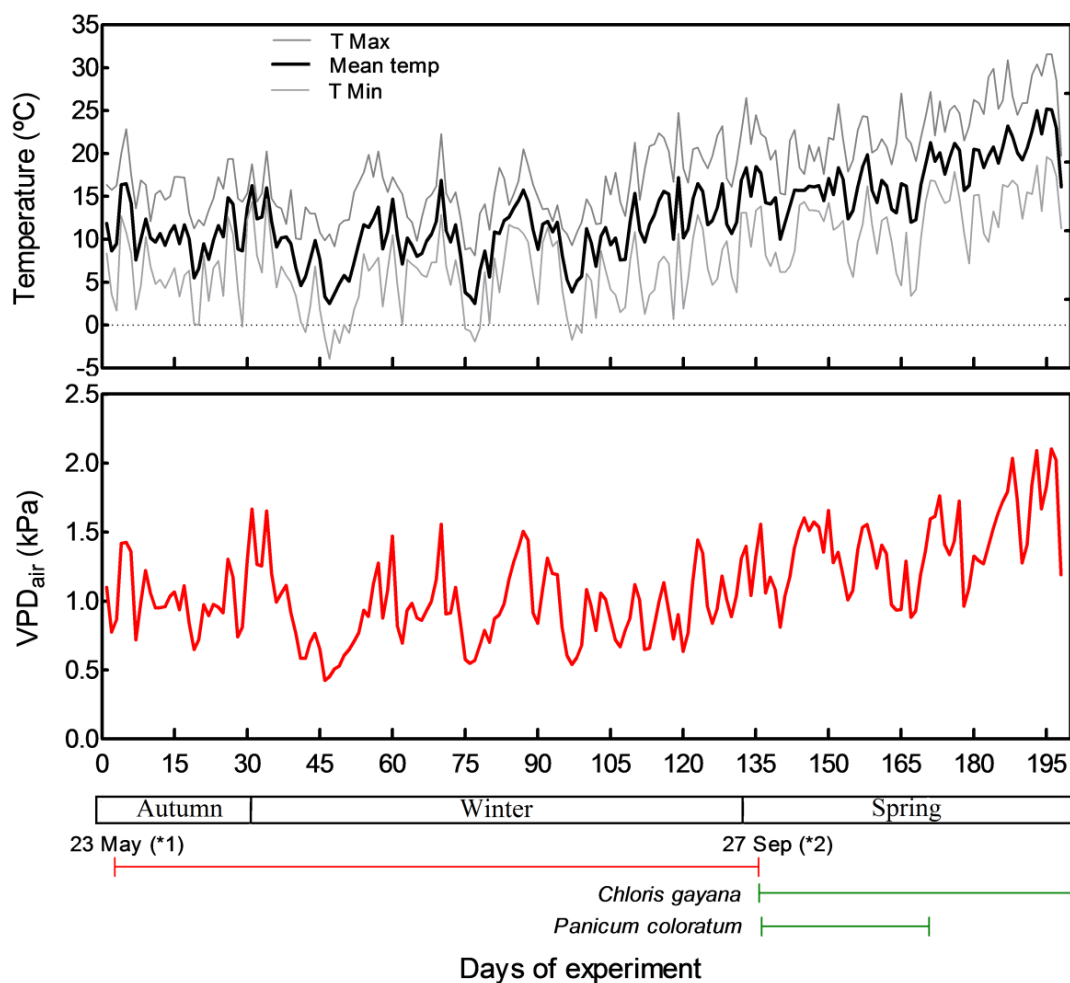
### Statistical analysis

Shoot biomass data were analyzed separately for each harvest by using Student's T-test ( $P < 0.05$ ).

The relationships between total shoot biomass and: (i) lower layer biomass; (ii) upper layer biomass; (iii) sheath biomass; and (iv) leaf blade biomass, were studied through linear regression using log-transformed data (Poorter and Nagel 2000). Slope tests were carried out to compare these relationships among treatments. Whenever slopes and intercepts among linear adjustments did not differ, data were pooled and a single linear equation was presented. Shoot biomass results are presented as non-transformed means ( $\pm$  standard errors) of 10 replicates. Allometric analysis was used to determine whether shoot biomass differences among plant compartments were due to a size reduction or changes in biomass allocation.

## Results

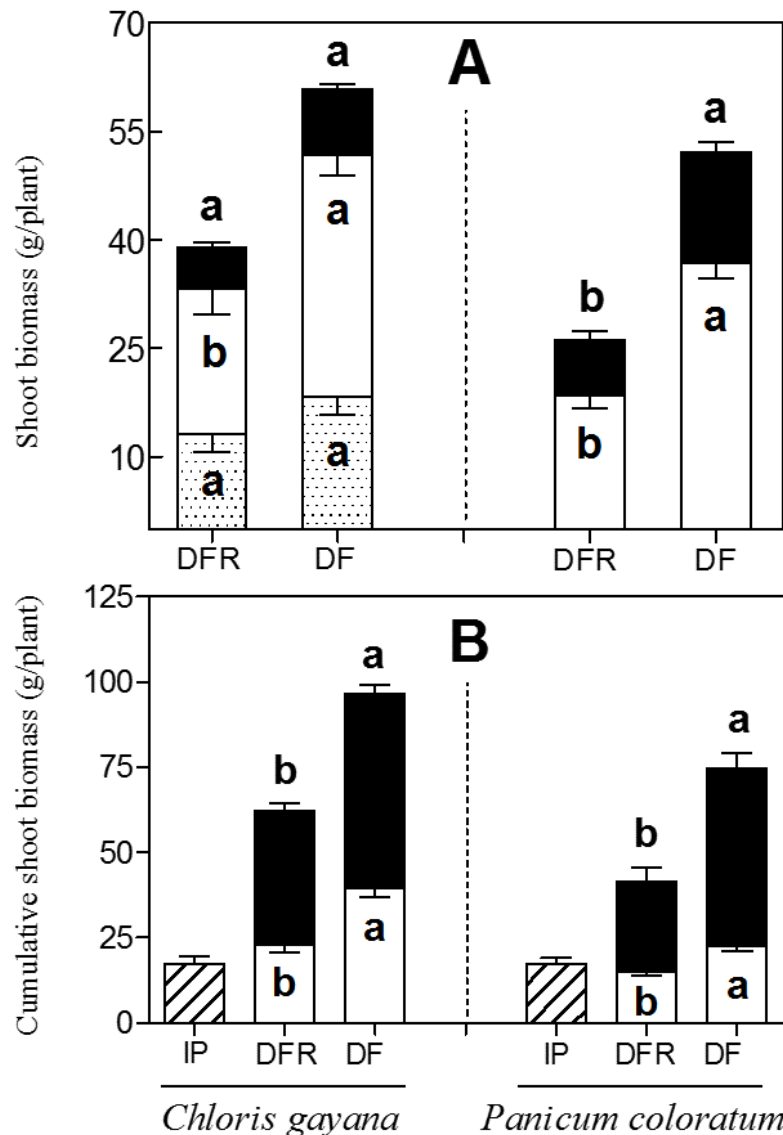
The experimental period extended from late autumn to spring, showing average daily minimum temperature of  $7.8 \pm 5.6$  °C, average daily maximum temperature of  $18.5 \pm 5.1$  °C and daily mean temperature of  $12.8 \pm 4.8$  °C. During the experiment, 13 frost events were recorded, when minimum temperature was lower than 0 °C (between -0.2 and -3.9 °C). The atmospheric evapotranspirative demand, estimated through the air vapor pressure deficit, gradually increased till spring, ranging from 0.42 to 2.10 kPa (mean of 1.10 kPa; Figure 1). In addition, average daily temperatures by month from 2 February to 23 May were 21.7, 20.1, 16.8 and 12.4 °C for February, March, April and May, respectively.



**Figure 1.** Daily maximum, mean and minimum air temperatures (upper panel) and air vapor pressure deficit (VPD, lower panel) during the study. (\*1) Deferred forage cut (autumn); (\*2) Early spring cut.

Plants that retained autumn-deferred forage during winter (DF) attained a higher shoot biomass (*C. gayana*,  $P<0.01$ ; *P. coloratum*,  $P<0.05$ ) following spring growth than plants whose deferred forage was removed at the beginning of winter (DFR). This effect was expressed in both species with average increases of 55 and 83% in *C. gayana* and *P. coloratum*, respectively (Figure 2). Noticeably, no plants died throughout the course of the experiment. The change in shoot biomass occurred only in the lower biomass layer in *C. gayana* (lower layer,

$P<0.05$ ; upper layer,  $P=0.73$ ) and in both layers in *P. coloratum* (lower layer,  $P<0.01$ ; upper layer,  $P<0.01$ ) (Figure 2A). The biomass of stolons in *C. gayana* was not affected by the removal of deferred forage ( $P>0.05$ ). Total shoot biomass accumulated during the experimental period including growth in spring, winter and that removed at the beginning of the experiment (DFR treatment only), was 53 and 80% higher in *C. gayana* and *P. coloratum*, respectively, for the treatment where deferred forage was retained (Figure 2B).

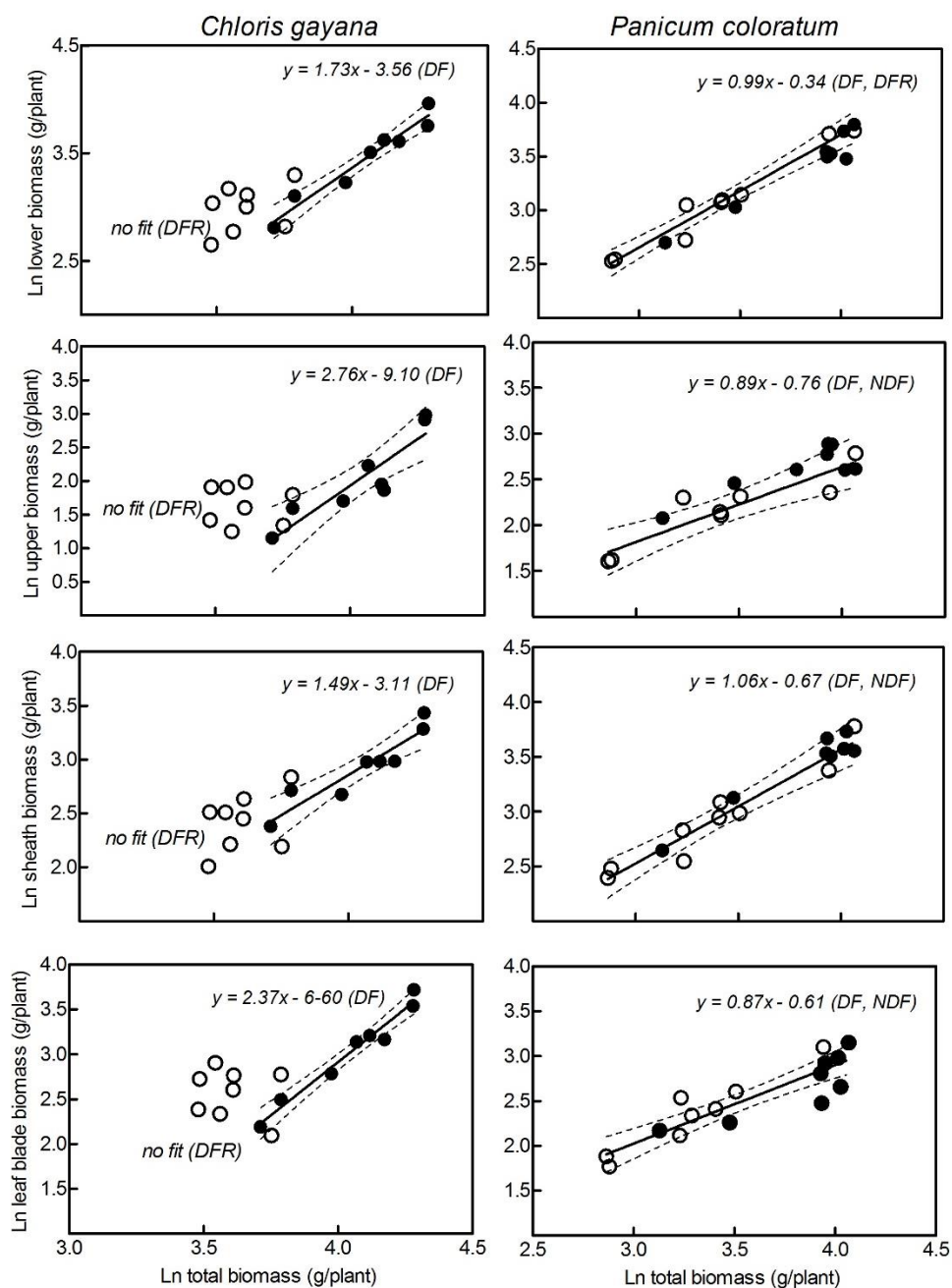


**Figure 2.** A) Shoot dry matter biomass after spring growth of *Chloris gayana* and *Panicum coloratum* plants, allowed to grow during autumn and then subjected to deferred forage removal at beginning of winter (DFR) or left as control plants (DF), then cut in early spring. Forage is divided into upper layer (black bars, >15 cm), lower layer (white bars, <15 cm) and stolons (shaded bars, *C. gayana* only). B) Cumulative shoot dry matter biomass during the experiment, including spring growth (black bars), removed autumn forage and early spring cut (DFR plants) and early spring cut (DF plants) (white bars) and initial plant biomass (IP). Within plant species and components, bars with different letters are significantly different based on Student's T-test. Values are means and s.e. based each on 10 replicates at each harvest.



The relationships between the biomass located in different plant layers (upper and lower) and both blade and sheath biomass were studied in correlations with total shoot biomass during spring growth. There were significant linear relationships (Table 1, R values higher than 0.80) between accumulated biomass (log-transformed data) of both layers (above and below 15 cm) and total shoot biomass (Figure 3, left panel) in *C. gayana*

exposed to the DF treatment. No linear relationships between measurements of biomass were found in plants in which deferred forage was removed (DFR) in this species (Figure 3, empty points; Table 1, R values lower than 0.17). The situation with *P. coloratum* was different, since there were significant linear relationships for both treatments across all compartments (Figure 3, right panel; Table 1).



**Figure 3.** Allometric relationships between Ln of total shoot biomass at the end of spring and: (i) Ln of lower layer biomass, (ii) Ln of upper layer biomass, (iii) Ln of sheath biomass and (iv) Ln of leaf blade biomass of *Chloris gayana* and *Panicum coloratum* plants subjected to deferred forage removal at the beginning of winter (open symbols, DFR) and control plants (closed symbols, DF). Note: when slopes and intercepts among fitted regression lines did not differ, data were pooled and a single regression line for both species is presented for clarity, i.e. for *P. coloratum*.

**Table 1.** Relationships between Ln of total shoot biomass and: (i) Ln of lower layer biomass, (ii) Ln of upper layer biomass, (iii) Ln of sheath biomass and (iv) Ln of leaf blade biomass of *Chloris gayana* and *Panicum coloratum* plants subjected to deferred forage removal at the beginning of winter (DFR) and control plants (DF) (Slopes  $\pm$  s.e.). R<sup>2</sup> values and F values are presented for each fitted regression line.

	Slope		F		R <sup>2</sup>	
	DFR	DF	DFR	DF	DFR	DF
<i>Chloris gayana</i>						
Lower layer biomass	0.739 $\pm$ 0.726	1.732 $\pm$ 0.163	1.037 NS	112.60 ***	0.147	0.949
Upper layer biomass	- 0.196 $\pm$ 1.027	2.760 $\pm$ 0.514	0.036 NS	28.73 **	0.001	0.827
Sheath biomass	0.970 $\pm$ 0.873	1.494 $\pm$ 0.226	1.234 NS	43.42 ***	0.170	0.878
Leaf blade biomass	- 0.406 $\pm$ 0.973	2.379 $\pm$ 0.183	0.173 NS	168.90 ***	0.028	0.965
<i>Panicum coloratum</i>						
Lower layer biomass	1.047 $\pm$ 0.078	1.075 $\pm$ 0.108	175.70 ***	99.04 ***	0.961	0.942
Upper layer biomass	0.820 $\pm$ 0.149	0.697 $\pm$ 0.176	30.27 **	15.69 **	0.834	0.723
Sheath biomass	1.041 $\pm$ 0.112	1.048 $\pm$ 0.106	86.14 ***	97.24 ***	0.924	0.941
Leaf blade biomass	1.180 $\pm$ 0.144	0.886 $\pm$ 0.233	66.79 ***	14.37 ***	0.917	0.705

## Discussion

The presence of the standing deferred forage during winter produced a positive effect on plant regrowth of both species during spring that could be a result of maintaining the viability of meristems, which produce new vegetative growth after winter, and protecting stem bases from cold (Ferro et al. 2015). Tropical grasses grow very slowly under cool temperatures, as a result of markedly low rates of leaf formation, leaf expansion and photosynthesis (Moore et al. 2004). Since grass regrowth depends mainly on current carbon assimilation (Schnyder and Visser 1999), stem bases are important as a reserve compartment of non-structural carbohydrates (NSC). After the cool season, when tropical grasses begin to grow, these reserves are the main source of carbon until leaves appear and rates of photosynthesis increase as the warm season progresses (de Visser 1997). Some studies with tropical grasses suggest that seasonal variation in the allocation of photo-assimilates is a mechanism used by plants to ensure their survival during winter. Carvalho et al. (2001) observed that *Cynodon* spp. plants increased the NSC in root bases from mid-spring, while NSC in the base of stems began to decrease as a result of plant growth. In this experiment, removing the deferred forage in early winter possibly promoted vegetative growth at this time, reducing reserves which had accumulated in stem bases during the previous growing season (Ferro et al. 2015). Therefore, DFR plants could have faced winter and early spring with lower stem-base reserves than DF plants.

Regarding the physical effects of herbage cover, we hypothesize that deferred forage may protect plant meristems from the pernicious action of frosts, allowing them to largely remain viable. Thus, the physical barrier provided by deferred grass creates a microenvironment, which safeguards the active meristems from the cold temperatures (Davies and McNaughton 1980). In fact, temperature measurements carried out on stem bases (between 3 and 5 cm above soil surface) support this hypothesis, showing that temperatures recorded in DF plants were 1–3 °C higher than those in DFR plants, where air temperatures were below zero (data not shown). Since active plant meristems are sinks of C and N compounds and more relevant than roots (Wardlaw 1990), DF plants might be able to achieve a rapid transition when temperatures increase in spring, and utilize the stored nutrients to produce early spring growth.

Spring regrowth differences between species could be associated with the better cold tolerance of *P. coloratum*, which suffered less death of tissues during winter. This species achieved faster regrowth than *C. gayana* due to its ability to retain more green leaf area at the commencement of spring (Kobayashi et al. 1978). Despite the temperature increase during spring and resulting response in shoot biomass, temperatures had not reached optimal values for maximum growth. This is one possible reason why statistically significant differences in biomass in the upper layer between treatments in *C. gayana* were not observed. Sustaining plant activity, even if rates of photosynthesis are low, could contribute to preserving NSC reserves located in the roots/crown

fraction (top 5 cm of roots and 2.5 cm above-ground stubble) during cold winter conditions. Previous studies have shown that *Brachiaria decumbens* could increase NSC reserves by maintaining plant activity during less restrictive winter conditions in a tropical climate (Andrade and Marques Neto 1989; Soares Filho 1991), while NSC reserves in *Cynodon* spp. declined in order to ensure vital functions of tissues, when reduction in leaf area was severe as a result of a hard winter in mid-west USA (Missouri) (Dunn and Nelson 1974). Additionally, structures like stolons or rhizomes are important for the survival of tropical grasses which lack hardy aerial shoots, because their location is generally near soil level where temperatures are warmer (Davies and McNaughton 1980). Biomass of stolons was not reduced in either DF or DFR *C. gayana* plants; this finding could be important not only in terms of winter plant survival but also for pasture recovery during the warm season.

The practice of retaining deferred forage to reduce cold damage under freezing conditions proved effective in *C. gayana*. While *C. gayana* plants, where deferred forage was removed (DFR treatment), suffered significant death of shoot biomass and were strongly stressed, DF plants showed a considerable proportion of green foliage in the lower layer. On the other hand, *P. coloratum* was able to maintain green foliage on almost whole plants during the cool season in both treatments. Although high cardinal base temperature can be the factor limiting winter growth of tropical grasses to minimal levels, water deficit can be a limiting factor in areas where a marked dry season coincides with the cool season (Jones 1985; Pearson et al. 1985). Accumulation of shoot biomass in late autumn and winter in both species was considerable and was greater under grass deferral (Figure 2B, white bars). However, it is important to mention that the rate of growth in spring was much greater than in winter (see dates in experimental details and Figure 1). The presence of adequate soil moisture during the study probably resulted in pasture growth mainly in late autumn and early spring, when no frost events were recorded (Figure 1, T min line). Other studies (Kobayashi et al. 1978; Ostrowski and Fay 1979; Tischler and Ocumpaugh 2004) under high water availability (rainfall) in southeast Queensland (Australia) found that *P. coloratum* produced forage growth longer into winter than other tropical grasses.

In tropical and subtropical climates with a marked dry winter season, soil moisture conditions are usually inadequate to support pasture growth, but soil moisture is often adequate in temperate climates (Soriano et al. 1991). This can have a positive impact on productivity because grass response to environmental stresses depends not only

on the plant's tolerance of the actual event, but also on the ability to grow after the stress is removed, when water supplies could be adequate for growth (Striker 2008). Studies that analyze growth patterns and water use efficiency in tropical pastures under temperate climates are scarce or even non-existent. The fact that DF plants produced more shoot biomass than DFR plants as well as suffering reduced green leaf death should contribute to identifying management strategies to allow tropical plants to cope better under hard winter conditions. Thus, producing leafy pastures for utilization during the warm season, when forage quality and availability are high, and resting pastures during the cool season, when herbage protects plants from cold and forage quality is low, could be an effective alternative management strategy (see also O'Regain et al. 2009).

Poorter and Nagel (2000) highlighted the importance of incorporating allometric analysis in order to study biomass allocation under different stress conditions, as many morphological and biomass ratios change based on plant size. Some factors could affect plant growth rate, but not affect biomass allocation to different structures at a given size. This allometric analysis identified that *C. gayana* was severely stressed in winter, when deferred forage was removed (absence of fitted data, Figure 3), while DF plants of this species were not. We associate the lack of fit between total plant biomass accumulation and different plant compartments with a stressful condition for plant growth in DFR plants (Figure 3, left panels; Table 1, R values). On the other hand, *P. coloratum* showed a good fit in both treatments supporting previous statements about the good tolerance of this species to these experimental conditions (Figure 3, right panels; Table 1, R values). An allometric analysis in *P. coloratum* subjected to other environmental stress (complete flooding) showed a strong correlation among shoot biomass reductions, oxidative stress and the absence of fit (Imaz et al. 2012). Similarly, Kollmann et al. (2002) reported that some allometric relationships were radically altered in the ornamental species, *Kochia scoparia*, in response to over-crowding. These findings agree with previous studies, which demonstrated that *P. coloratum* can tolerate both moderate chilling and freezing stresses, when used as cultivated forage in temperate livestock systems.

## Conclusion

The results obtained in this experiment appear significant for the ecophysiology and grazing management of these tropical grasses. This pot study showed a positive effect



on spring growth of retaining forage accumulated during autumn as winter cover. In this sense, *P. coloratum* was less stressed than *C. gayana* as reflected in reduced foliage damage and increased shoot biomass accumulation during spring growth, as the allometric analysis has shown. We suggest the following grazing management strategies should be tested for these tropical grasses in temperate environments where frosts occur: (i) allow forage to accumulate in autumn and do not graze or cut it during winter (especially between the first and last frost events) in order to reduce the damage caused by cold and to achieve faster spring regrowth; (ii) commence grazing or cutting in late spring or early summer when temperatures increase and shoot biomass is fully recovered. These strategies need to be verified under field conditions with grazing animals or cutting before recommendations are made to farmers. Future work should also examine forage availability and quality at different times of the year, as part of a temperate pastoral system.

## References

- Anderson JA; Wu YQ. 2011. Freeze tolerance of forage bermudagrasses. *Grass and Forage Science* 66:449–452. DOI: [10.1111/j.1365-2494.2011.00802.x](https://doi.org/10.1111/j.1365-2494.2011.00802.x)
- Andrade IF; Marques Neto J. 1989. Efeito da carga animal sobre os níveis de carboidratos solúveis e pesos seco da base do colmo, base do caule e sistema radicular de *Brachiaria decumbens*. *Revista da Sociedade Brasileira de Zootecnia* 18:426–431.
- Baruch Z. 1994. Responses to drought and flooding in tropical forage grasses. I. Biomass allocation, leaf growth and mineral nutrients. *Plant and Soil* 164:87–96. DOI: [10.1007/bf00010114](https://doi.org/10.1007/bf00010114)
- Baron VS; Bélanger G. 2007. Climate and forage adaptation. In: Barnes RF; Nelson CJ; Moore KJ; Collins M, eds. *Forages: The science of grassland agriculture*, Vol. II. Sixth Edn. Blackwell Publishing, Oxon, UK. p. 83–104.
- Boschma SP; Lodge GM; Harden S. 2008. Herbage mass and persistence of pasture legumes and grasses at two potentially different saline and waterlogging sites in northern New South Wales. *Australian Journal of Experimental Agriculture* 48:553–567. DOI: [10.1071/EA07115](https://doi.org/10.1071/EA07115)
- Carvalho CA; Silva SC da; Sbrissia AF. 2001. Carboidratos não estruturais e acúmulo de forragem em pastagens de *Cynodon* spp. sob lotação contínua. *Scientia Agricola* 58:667–674. DOI: [10.1590/S0103-90162001000400003](https://doi.org/10.1590/S0103-90162001000400003)
- Chaparro CJ; Sollenberger LE; Jones CS. 1995. Defoliation effects on 'Mott' Elephantgrass productivity and leaf percentage. *Agronomy Journal* 87:981–985. DOI: [10.2134/agronj1995.00021962008700050034x](https://doi.org/10.2134/agronj1995.00021962008700050034x)
- Chapman SC; Chakraborty S; Dreccer MF; Howden SM. 2012. Plant adaptation to climate change – opportunities and priorities in breeding. *Crop & Pasture Science* 63:251–268. DOI: [10.1071/cp11303](https://doi.org/10.1071/cp11303)
- Cook BG; Pengelly BC; Brown SD; Donnelly JL; Eagles DA; Franco MA; Hanson J; Mullen BF; Partridge IJ; Peters M; Schultze-Kraft R. 2005. Tropical forages: An interactive selection tool. Web tool. CSIRO, DPI&F (Qld), CIAT and ILRI, Brisbane, Australia. (Available at: [www.tropicalforages.info](http://www.tropicalforages.info)).
- Crush JR; Rowarth JS. 2007. The role of C<sub>4</sub> grasses in New Zealand pastoral systems. *New Zealand Journal of Agricultural Research* 50:125–137. DOI: [10.1080/00288230709510287](https://doi.org/10.1080/00288230709510287)
- Davies LJ; McNaughton KG. 1980. Effect of winter herbage cover on survival and spring growth of tropical grasses in a temperate environment. *New Zealand Journal of Agricultural Research* 23:331–337. DOI: [10.1080/00288233.1980.10425364](https://doi.org/10.1080/00288233.1980.10425364)
- Dear BS; Reed KFM; Craig AD. 2008. Outcomes of the search for new perennial and salt tolerant pasture plants for southern Australia. *Australian Journal of Experimental Agriculture* 48:578–588. DOI: [10.1071/EA07118](https://doi.org/10.1071/EA07118)
- de Visser H. 1997. Nutrient fluxes in splanchnic tissue of dairy cows: Influence of grass quality. *Journal of Dairy Science* 80:1666–1673. DOI: [10.3168/jds.S0022-0302\(97\)76098-3](https://doi.org/10.3168/jds.S0022-0302(97)76098-3)
- Dunn JH; Nelson CJ. 1974. Chemical changes occurring in three Bermudagrass turf cultivars in relation to cold hardiness. *Agronomy Journal* 66:28–31. DOI: [10.2134/agronj1974.00021962006600010008x](https://doi.org/10.2134/agronj1974.00021962006600010008x)
- Ferro MM; Zanine AM; Ferreira DJ; Souza AL de; Geron LJV. 2015. Organic reserves in tropical grasses under grazing. *American Journal of Plant Sciences* 6:2329–2338. DOI: [10.4236/ajps.2015.614236](https://doi.org/10.4236/ajps.2015.614236)
- Flores JA; Moore JE; Sollenberger LE. 1993. Determinants of forage quality in Pensacola bahiagrass and Mott elephantgrass. *Journal of Animal Science* 71:1606–1614. (Available at: [www.ncbi.nlm.nih.gov/pubmed/8392049](http://www.ncbi.nlm.nih.gov/pubmed/8392049)).
- Imaz JA; Giménez DO; Grimoldi AA; Striker GG. 2012. The effects of submergence on anatomical, morphological and biomass allocation responses of tropical grasses *Chloris gayana* and *Panicum coloratum* at seedling stage. *Crop & Pasture Science* 63:1145–1155. DOI: [10.1071/CP12335](https://doi.org/10.1071/CP12335)
- Imaz JA; Giménez DO; Grimoldi AA; Striker GG. 2015a. Ability to recover overrides the negative effects of flooding on growth of tropical grasses *Chloris gayana* and *Panicum coloratum*. *Crop & Pasture Science* 66:100–106. DOI: [10.1071/CP14172](https://doi.org/10.1071/CP14172)
- Imaz JA; Dos Santos D; Hernández O; Radrizzani A; Arroquy JI. 2015b. Effect of supplementation frequency on forage utilization by heifers grazing a tropical pasture during the dry season. *Proceedings of the XXIII International Grassland Congress, New Delhi, India, 2015*. (Available at: <http://goo.gl/hc4sYp>).

- IPCC (Intergovernmental Panel on Climate Change). 2006. 2006 guidelines for national greenhouse gas inventories. Vol. 4: Agriculture, forestry and other land use. Prepared by the National Greenhouse Gas Inventories Programme, Eggleston HS; Buendia L; Miwa K; Ngara T; Tanabe K, eds. Institute for Global Environmental Strategies (IGES), Hayama, Japan. (Available at: [www.ipcc-nggip.iges.or.jp/public/2006gl/](http://www.ipcc-nggip.iges.or.jp/public/2006gl/)).
- Ivory DA. 1975. The effect of temperature on growth of tropical pasture grasses. Ph.D. Thesis. University of Queensland, Brisbane, Australia.
- Johnston WH. 1996. The place of C4 grasses in temperate pastures in Australia. *New Zealand Journal of Agricultural Research* 39:527–540. DOI: [10.1080/00288233.1996.9513213](https://doi.org/10.1080/00288233.1996.9513213)
- Jones CA. 1985. C4 grasses and cereals: Growth, development, and stress response. John Wiley & Sons, New York, USA.
- Kobayashi T; Nishimura S; Tanaka S. 1978. Growth of tropical and subtropical grasses in the south-western area of Japan as influenced by air temperature. 1. Effect of sowing date, growth stage and cutting frequency on growth and yield. *Science Bulletin of the Faculty of Agriculture, Kyushu University* 32:169–175.
- Loch DS. 1980. Seed assures future of Callide Rhodes. *Queensland Agricultural Journal* 106:183–187.
- Loch DS; Rethman NFG; Van Niekerk WA. 2004. Rhodes-grass. In: Moser LE; Burson BL; Sollenberger LE, eds. Warm-season (C4) grasses. *Agronomy Monograph* 45. American Society of Agronomy, Madison, WI, USA. p. 833–872. DOI: [10.2134/agronmonogr45.c25](https://doi.org/10.2134/agronmonogr45.c25)
- Long SP. 1999. Environmental responses. In: Sage RF; Monson R, eds. C4 plant biology. Academic Press, New York, USA. p. 215–249. DOI: [10.1016/b978-012614440-6/50008-2](https://doi.org/10.1016/b978-012614440-6/50008-2)
- Ludlow MM. 1980. Stress physiology of tropical pasture plants. *Tropical Grasslands* 14:136–145. (Available at: <https://goo.gl/1U2Vb9>).
- Márquez EJ; Rada F; Fariñas MR. 2006. Freezing tolerance in grasses along an altitudinal gradient in the Venezuelan Andes. *Oecologia* 150:393–397. DOI: [10.1007/s00442-006-0556-3](https://doi.org/10.1007/s00442-006-0556-3)
- Moore KJ; Boote KJ; Sanderson MA. 2004. Physiology and developmental morphology. In: Moser LE; Burson BL; Sollenberger LE, eds. Warm-season (C4) grasses. *Agronomy Monograph* 45. American Society of Agronomy, Madison, WI, USA. p. 179–216. DOI: [10.2134/agronmonogr45.c6](https://doi.org/10.2134/agronmonogr45.c6)
- O'Reagain P; Bushell J; Holloway C; Reid A. 2009. Managing for rainfall variability: Effect of grazing strategy on cattle production in a dry tropical savanna. *Animal Production Science* 49:85–99. DOI: [10.1071/EA07187](https://doi.org/10.1071/EA07187)
- Ostrowski H; Fay MF. 1979. Cool season productivity of five tropical grasses in a high rainfall area of south-east Queensland. *Tropical Grasslands* 13:149–153. (Available at: <https://goo.gl/D09xuF>).
- Pearson CJ; Kemp H; Kirby AC; Launder TE; Mikked C. 1985. Responsiveness to seasonal temperature and nitrogen among genotypes of kikuyu, paspalum and bermuda grass pasture of coastal New South Wales. *Australian Journal of Experimental Agriculture* 25:109–116. DOI: [10.1071/ea9850109](https://doi.org/10.1071/ea9850109)
- Perelman SB; León RJC; Oesterheld M. 2001. Cross-scale vegetation patterns of Flooding Pampa grasslands. *Journal of Ecology* 89:562–577. DOI: [10.1046/j.0022-0477.2001.00579.x](https://doi.org/10.1046/j.0022-0477.2001.00579.x)
- Pitman WD. 2001. Environmental constraints to tropical forage plant adaptation and productivity. In: Sotomayor-Rios A; Pitman WD, eds. *Tropical forage plants: Development and use*. CRC Press, Boca Raton, FL, USA. p. 17–23. DOI: [10.1201/9781420038781.ch2](https://doi.org/10.1201/9781420038781.ch2)
- Poorter H; Nagel O. 2000. The role of biomass allocation in the growth response of plants to different levels of light, CO<sub>2</sub>, nutrients and water: A quantitative review. *Australian Journal of Plant Physiology* 27:595–607. DOI: [10.1071/pp99173](https://doi.org/10.1071/pp99173)
- Poorter H; Bühler J; van Dusschoten D; Climent J; Postma JA. 2012. Pot size matters: A meta-analysis of the effects of rooting volume on plant growth. *Functional Plant Biology* 39:839–850. DOI: [10.1071/FP12049](https://doi.org/10.1071/FP12049)
- Robinson DL; Castillo AE; Kong T. 1993. Acid tolerance of forage species. *Better Crops* 77(4):8–11.
- Sage RF; Percy RW. 2000. The physiological ecology of C<sub>4</sub> photosynthesis. In: Leegood RC; Sharkey TD; von Caemmerer S, eds. *Photosynthesis: Physiology and metabolism*. Kluwer Academic Publishers, Dordrecht, The Netherlands. p. 497–532.
- Schnyder H; de Visser R. 1999. Fluxes of reserve-derived and currently assimilated carbon and nitrogen in perennial ryegrass recovering from defoliation. The regrowing tiller and its component functionally distinct zones. *Plant Physiologist* 119:1423–1436. DOI: [10.1104/pp.119.4.1423](https://doi.org/10.1104/pp.119.4.1423)
- Soares Filho CV. 1991. Variação sazonal de parâmetros bioquímico-fisiológicos em *Brachiaria decumbens* estabelecida em pastagem. Dissertação (Mestrado). Escola Superior de Agricultura “Luiz de Queiroz”, Universidade de São Paulo, Piracicaba, SP, Brazil.
- Sollenberger LE; Reis RA; Nussio LG; Chambliss CG; Kunkle WE. 2004. Conserved forage. In: Moser LE; Burson BL; Sollenberger LE, eds. Warm-season (C4) grasses. *Agronomy Monograph* 45. American Society of Agronomy, Madison, WI, USA. p. 355–387. DOI: [10.2134/agronmonogr45.c10](https://doi.org/10.2134/agronmonogr45.c10)
- Soriano A. 1991. Río de la Plata grasslands. In: Coupland RT, ed. *Ecosystems of the world 8A: Natural grasslands. Introduction and Western Hemisphere*. Elsevier, Amsterdam, The Netherlands. p. 367–407.
- Striker GG. 2008. Visiting the methodological aspects of flooding experiments: Quantitative evidence from agricultural and ecophysiological studies. *Journal of Agronomy & Crop Science* 194:249–255. DOI: [10.1111/j.1439-037X.2008.00317.x](https://doi.org/10.1111/j.1439-037X.2008.00317.x)
- Tischler CR; Ocumpaugh WR. 2004. Kleingrass, blue panic and vine mesquite. In: Moser LE; Burson BL; Sollenberger

LE, eds. Warm-season (C4) grasses. Agronomy Monograph 45. American Society of Agronomy, Madison, WI, USA. p. 623–649. DOI: [10.2134/agronmonogr45.c18](https://doi.org/10.2134/agronmonogr45.c18)

Wardlaw IF. 1990. Tansley Review No. 27 The control of carbon partitioning in plants. *New Phytologist* 116:341–381. DOI: [10.1111/j.1469-8137.1990.tb00524.x](https://doi.org/10.1111/j.1469-8137.1990.tb00524.x)

*(Received for publication 12 May 2016; accepted 19 September 2016)*

© 2017



*Tropical Grasslands-Forrajes Tropicales* is an open-access journal published by *Centro Internacional de Agricultura Tropical (CIAT)*. This work is licensed under the Creative Commons Attribution-NonCommercial-ShareAlike 3.0 Unported license. To view a copy of this license, visit <http://creativecommons.org/licenses/by-nc-sa/3.0/>