

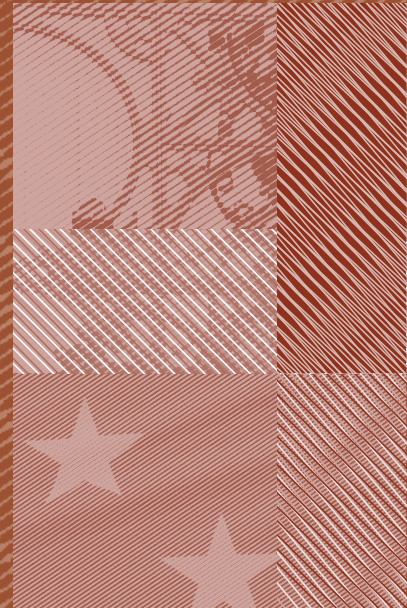
# **DOES TFP DRIVE HOUSING PRICES? A GROWTH ACCOUNTING EXERCISE FOR FOUR COUNTRIES**

**2011**

Alessio Moro and Galo Nuño

**Documentos de Trabajo  
N.º 1133**

**BANCO DE ESPAÑA**  
Eurosistema



**DOES TFP DRIVE HOUSING PRICES? A GROWTH ACCOUNTING EXERCISE  
FOR FOUR COUNTRIES**

# DOES TFP DRIVE HOUSING PRICES? A GROWTH ACCOUNTING EXERCISE FOR FOUR COUNTRIES <sup>(\*)</sup>

Alessio Moro

UNIVERSITY OF CAGLIARI

Galo Nuño

BANCO DE ESPAÑA

(\*) We thank Henrique Basso, Joel Lopez-Real, Paolo Mattana, Anton Nakov, seminar participants at the Bank of Spain and an anonymous referee for the useful comments. The views expressed are those of the authors and do not represent the views of the Bank of Spain or the Eurosystem. Alessio Moro is at the Department of Economics, Università di Cagliari, Viale Sant'Ignazio 17, 09123, Cagliari, Italy. Galo Nuño is at Banco de España, Alcalá 48, 28014, Madrid, Spain. Corresponding author. Tel.: +39 070 675 33 41. E-mail addresses: amor@unica.it (A. Moro), galo.nuno@bde.es (G. Nuño).

The Working Paper Series seeks to disseminate original research in economics and finance. All papers have been anonymously refereed. By publishing these papers, the Banco de España aims to contribute to economic analysis and, in particular, to knowledge of the Spanish economy and its international environment.

The opinions and analyses in the Working Paper Series are the responsibility of the authors and, therefore, do not necessarily coincide with those of the Banco de España or the Eurosystem.

The Banco de España disseminates its main reports and most of its publications via the INTERNET at the following website: <http://www.bde.es>.

Reproduction for educational and non-commercial purposes is permitted provided that the source is acknowledged.

© BANCO DE ESPAÑA, Madrid, 2011

ISSN: 0213-2710 (print)

ISSN: 1579-8666 (on line)

Depósito legal: M. 46973-2011

Unidad de Publicaciones, Banco de España

## **Abstract**

Housing prices diverge from construction prices after 1997 in four major countries. Besides, TFP differences between construction and the general economy account for the evolution of construction prices in the U.S. and Germany, but not in the U.K. and Spain.

**Keywords:** Housing prices, TFP, growth accounting, Cobb-Douglas.

**JEL classification:** E01, E23, E25, E32.

## **Resumen**

Este documento analiza el papel de las diferencias en crecimiento de la PTF entre el sector de la construcción y la economía en su conjunto para explicar la evolución de los precios reales de la vivienda. Para ello, primero se comparan las sendas de precios de construcción y vivienda en Estados Unidos, Reino Unido, Alemania y España. Se encuentra que, si bien ambos precios siguen tendencias similares antes de 1997, a partir de esa fecha divergen en todos los países. En segundo lugar, se realiza un ejercicio de contabilidad del crecimiento para calcular la contribución de la PTF relativa sobre el precio real de la construcción. Los resultados indican que las diferencias en PTF explican en su mayor parte la evolución de los precios de construcción en Estados Unidos y Alemania, mientras que en Reino Unido y España estos parecen haber sido el resultado de la evolución de los salarios y los retornos al capital.

**Palabras claves:** Precios de la vivienda, PTF, contabilidad del crecimiento, Cobb-Douglas.

**Códigos JEL:** E01, E23, E25, E32.

# 1 Introduction

We investigate the role of differences in TFP growth between the construction sector and the general economy in the evolution of real housing prices in four major countries. We first compare housing prices with construction prices in the U.S., the U.K., Spain and Germany. The first three countries experienced major housing prices booms in the first decade of the 21st Century whereas housing prices in Germany have been roughly stable. We find that housing prices closely follow construction prices during the pre-1997 period while they diverge afterwards in all countries, although to a different extent. Only in the U.S. the two prices are back to a common level in 2007.

Secondly, we use a growth-accounting framework (Solow, 1957, and Jorgenson, Gollop and Fraumeni, 1987) and its dual approach (Oulton, 2007) to assess the contribution of the TFP growth differential between the construction sector and the general economy on construction prices.<sup>1</sup> If TFP grows more slowly in the construction sector than in the overall economy, then the relative price of construction goes up as a particular case of Baumol's "cost disease" (Baumol, 1967). Our results suggest that the surge in construction prices in the U.S. is the consequence of an increase in relative TFP growth between the general economy and the construction sector, especially since the mid-90s.<sup>2</sup> Relative TFP also drives construction prices in Germany. However, we find that the rise in construction prices in both the U.K. and Spain is not due to TFP differences but to relative rental prices of labor and capital between the construction sector and the general economy.

## 2 Housing Prices versus Construction Prices

Figure 1 displays construction and housing prices for the U.S., the U.K., Germany and Spain from 1987 to 2007.<sup>3</sup> In the U.S., housing prices track construction prices until 2001. During the "housing boom", from 2002 to 2006, house prices rise faster than construction ones. In 2007, housing prices fall to the same level as construction prices. Overall, construction prices grow around 70% since 1987, a magnitude similar to the increase in housing prices. In the U.K. and in Spain, instead, house prices more than double in the decade 1997-2007 whereas construction prices only grow around 40%. In Germany, house prices fall more than 10% after 2003 whereas construction prices slightly grew. Thus, construction prices seem to play a pivotal role in the evolution of house prices in the U.S., whereas the relationship between both prices is feebler in the other countries.

## 3 Growth Accounting Methodology

We assume that production in the construction sector  $c$  and in the general economy  $g$  at time  $t$ ,  $Y_{i,t}$ , follows a Cobb-Douglas function:

$$Y_{i,t} = A_{i,t} K_{i,t}^{\alpha_i} L_{i,t}^{1-\alpha_i}, \quad i = \{c, g\}, \quad (1)$$

---

<sup>1</sup>In contrast with standard growth accounting that requires quantity indices to be implemented, the dual growth accounting requires the use of price indices. Oulton (2007) uses this approach to compute the relative price of equipment to consumption. See also Hsie (2002).

<sup>2</sup>Iacoviello and Neri (2010) and Khan (2008) find a similar result in the context of dynamic general equilibrium models. For the acceleration of aggregate TFP in the U.S. see Jorgenson and Stiroth (2000).

<sup>3</sup>The appendix provides a description of the data.

where  $K_{i,t}$  and  $L_{i,t}$  are, respectively, the sector-wide capital and labor services and  $A_{i,t}$  is total factor productivity (TFP). Capital and labor services in the two sectors are not required to be homogenous. Given (1), TFP can be computed using data on sectoral output, capital services and labor services.

With competitive markets, the price of one unit of  $Y_{i,t}$  is, in equilibrium,

$$P_{i,t} = \frac{W_{i,t}^{1-\alpha_i} R_{i,t}^{\alpha_i}}{\alpha_i^{\alpha_i} (1-\alpha_i)^{1-\alpha_i} A_{i,t}}, \quad (2)$$

where  $R_{i,t}$  is the rental rate of capital and  $W_{i,t}$  is the wage rate in sector  $i$ . Equation (2) implies that

$$\frac{(P_{c,t}/P_{g,t})}{(P_{c,t}/P_{g,t})} = \underbrace{\alpha_c \frac{\dot{R}_{c,t}}{R_{c,t}} - \alpha_g \frac{\dot{R}_{g,t}}{R_{g,t}} + (1-\alpha_c) \frac{\dot{W}_{c,t}}{W_{c,t}} - (1-\alpha_g) \frac{\dot{W}_{g,t}}{W_{g,t}}}_{(a)} + \underbrace{\frac{(A_{g,t}/A_{c,t})}{(A_{g,t}/A_{c,t})}}_{(b)}. \quad (3)$$

Equation (3) allows us to decompose the growth in the relative price of construction into two components: one (a) that depends on the growth in the price of capital and labor services in the two sectors weighted by the intensity of capital and labor services in production, determined by  $\alpha_c$  and  $\alpha_g$ ; and the second (b) that depends on the TFP growth differential between the two sectors. By using (3) it is possible to separate the increase in the relative price of construction due to market conditions (changes in the prices of capital and labor) from that due to different TFP growth in the two sectors.

## 4 Results

If the Cobb-Douglas is a good approximation of the production technology, the price of output measured in the data should be close to the theoretical price given by (2), and (3) can be used to decompose the relative price of construction. To test whether the Cobb-Douglas assumption is supported by the data we first compute TFP  $A_{i,t}$  in construction and in the general economy using data for  $Y_{i,t}$ ,  $K_{i,t}$ ,  $L_{i,t}$  and (1). Data are from the EU KLEMS Database.<sup>4</sup> Next, by taking logarithms of (2) we obtain

$$\log(P_{i,t}) = \beta_i + \beta_{i,r} \log(R_{i,t}) + \beta_{i,w} \log(W_{i,t}) + \beta_{i,a} \log(A_{i,t}), \quad (4)$$

where  $\beta_i = -\log[\alpha_i^{\alpha_i} (1-\alpha_i)^{1-\alpha_i}]$ ,  $\beta_{i,r} = \alpha_i$ ,  $\beta_{i,w} = 1-\alpha_i$ , and  $\beta_{i,a} = -1$ . Equation (4) can be estimated by using data on  $P_{i,t}$ ,  $W_{i,t}$ ,  $R_{i,t}$  and the series of  $A_{i,t}$ . If the estimated coefficients are statistically significant and close to their theoretical counterparts, then the Cobb-Douglas function represents a good approximation of the production technology. This is true because series  $Y_{i,t}$ ,  $K_{i,t}$ ,  $L_{i,t}$ ,  $P_{i,t}$ ,  $W_{i,t}$ ,  $R_{i,t}$  in the EU KLEMS dataset are not constructed subject to the Cobb-Douglas assumption.

Table 1 reports the results of estimates of the unrestricted regressions based on (4) for both construction and the general economy.<sup>5</sup> All estimated coefficients are close to their theoretical values and statistically significant.<sup>6</sup> We also run an  $F$ -test for constant returns to scale in

<sup>4</sup>See the appendix for details.

<sup>5</sup>Equation (2) implies a stable relationship among the variables  $P_{i,t}$ ,  $W_{i,t}$ ,  $R_{i,t}$ , and  $A_{i,t}$ . This implies that the corresponding time series in the data should be cointegrated. Although we do not perform a complete cointegration analysis, we test the stationarity of the residual series of each regression using the Augmented Dickey Fuller test. The residual series are stationary in each regression.

<sup>6</sup>We also run the regressions by imposing the restrictions  $\beta_{i,r} + \beta_{i,w} = 1$ , and  $\beta_{i,a} = -1$ . The estimated coefficients are very close to those obtained in the unrestricted regression.



production and find that the null hypothesis cannot be rejected at 1% significance level in all estimations apart from the German general economy. Figure 2 reports the relative price of construction measured in the data (solid blue line) and the theoretical one (circle blue line) constructed using EU KLEMS data and the right hand side of (2). The two series almost perfectly overlap in the graph for all countries.

Finally, we use (3) to decompose the growth in the relative price of construction. Results appear in table 2.<sup>7</sup> For each country, the first three rows report the average yearly growth rate of the relative price  $P_C/P_G$ , of relative TFP  $A_G/A_C$  and of relative rentals  $(R_C^{\alpha_C} W_C^{1-\alpha_C})/(R_G^{\alpha_G} W_G^{1-\alpha_G})$  while the fourth and the fifth rows report the contribution of relative TFP and relative rentals to the growth of  $P_C/P_G$ .<sup>8</sup>

In the U.S., 95% of the increase in the relative price of construction during the 1980-2007 period is explained by the increase in relative TFP. In particular, the acceleration of TFP growth in the general economy occurred in the nineties is responsible for the steep increase in relative TFP measured in the last part of the sample. In the U.K. instead, changes in relative TFP contribute negatively to the relative price of construction, which increased due to the rise in relative rentals. The case of Germany is similar to the U.S. Relative TFP growth is equal to 125% of the growth in the relative price of construction. Finally, in Spain, relative TFP is not responsible for the increase in the relative price of construction during the 1980-2007 period. To conclude, figure 2 reports relative TFP and relative rentals in all countries.

## 5 Conclusions

We have shown that technological differences between the general economy and the construction sector can account for the evolution of housing prices in the U.S. In the U.K. and Spain, instead, the evolution of construction prices and technological factors accounts for a small part of the surge in housing prices in the last decade. We conclude that, although the timing of the steep increase in housing prices is similar in all countries, the driving forces of this surge are different across countries.

---

<sup>7</sup>We perform the decomposition experiment for the period in which data are available for the four countries, 1980-2007.

<sup>8</sup>The sum of contributions might not sum to 100% due to large growth rates.

## References

- [1] Baumol, W. (1967), "Macroeconomics of unbalanced growth: the anatomy of urban crisis", *American Economic Review*, 57 (3), 415-426.
- [2] Hsieh, C. (2002), "What Explains the Industrial Revolution in East Asia? Evidence From the Factor Markets," *American Economic Review*, vol. 92(3), 502-526.
- [3] Iacoviello, M. and Neri, S. (2010), "Housing market spillovers: Evidence from an estimated DSGE model", *American Economic Journal: Macroeconomics* vol. 2(2), 125-64.
- [4] Jorgenson, D., Gollop, F. and Fraumeni, B., M. (1987), *Productivity and US Economic Growth*, Cambridge, MA: Harvard University Press.
- [5] Jorgenson, D. W. and Stiroh, K. J. (2000), "Raising the speed limit: U.S. economic growth in the information age", *Brookings Papers on Economic Activity* 31 (2000-1), 125–236.
- [6] Kahn, J. A. (2008), "What drives housing prices?", *Staff Reports* 345, Federal Reserve Bank of New York.
- [7] Oulton, N. (2007), "Investment-specific technological change and growth accounting" *Journal of Monetary Economics*, vol. 54(4), 1290-1299.
- [8] Solow, R. (1957), "Technical change and the aggregate production function", *The Review of Economics and Statistics* 39 (3), 312–320.

Table 1: **Cobb-Douglas Test**

Construction	U.S.		U.K.		Germany		Spain	
$\alpha_c$	0.10		0.15		0.18		0.27	
$\beta_c$	-0.01	(0.01)	0.02	(0.01)	-0.00	(0.00)	0.00	(0.00)
$\beta_{c,r}$	0.07***	(0.01)	0.14***	(0.01)	0.18***	(0.00)	0.28***	(0.00)
$\beta_{c,w}$	0.93***	(0.02)	0.84***	(0.01)	0.82***	(0.00)	0.72***	(0.00)
$\beta_{c,A}$	-1.02***	(0.04)	-0.91***	(0.05)	-1.04***	(0.02)	-1.02***	(0.01)
$F_c$	0.02		6.15**		0.30		2.70	
Whole Economy	U.S.		U.K.		Germany		Spain	
$\alpha_g$	0.35		0.28		0.31		0.37	
$\beta_g$	0.00	(0.00)	0.00	(0.00)	0.00***	(0.00)	-0.00	(0.00)
$\beta_{g,r}$	0.35***	(0.00)	0.28***	(0.00)	0.30***	(0.00)	0.37***	(0.00)
$\beta_{g,w}$	0.65***	(0.00)	0.72***	(0.00)	0.67***	(0.01)	0.64***	(0.00)
$\beta_{g,A}$	-1.00***	(0.00)	-1.02***	(0.00)	-0.92***	(0.02)	-1.01***	(0.00)
$F_g$	0.51		3.56*		22.07***		5.51**	

Standard errors are in brackets,  $\alpha$  is the time average capital share in GDP,  $F$  is the value of the  $F$ -test for constant returns to scale in production.

Table 2: **Relative Price Growth Decomposition 1980-2007**

%	U.S.	U.K.	Germany	Spain
Relative Price	2.37	0.56	0.93	0.97
Relative TFP	2.26	-0.41	1.17	0.03
Relative Rentals	0.11	0.98	-0.23	0.94
Contribution to price growth				
Relative TFP	95	-73	125	3
Relative Rentals	5	174	-24	97
Relative price $\frac{P_C}{P_G}$ , relative TFP $\frac{A_G}{A_C}$ , and relative rentals $\frac{R_C^{\alpha_C} W_C^{1-\alpha_C}}{R_G^{\alpha_G} W_G^{1-\alpha_G}}$				
are average annual growth rates. All numbers are in percentages.				

## 6 Data appendix

The EU KLEMS database, November 2009, provides indices of  $Y_{i,t}$ ,  $K_{i,t}$ ,  $L_{i,t}$ ,  $P_{i,t}$ ,  $W_{i,t}$ ,  $R_{i,t}$  for the construction sector and the general economy for the U.S., the U.K., Germany and Spain. Data coverage is 1970-2007 for the U.K. and Germany, 1977-2007 for the U.S. and 1980-2007 for Spain. Sources of the Housing Price Index are the Case-Shiller for the U.S. (available since 1987), the Department for Communities and Local Government for the U.K. (available since 1969), Deutsche Bundesbank for Germany (available since 1995) and Ministerio de Vivienda for Spain (available since 1995). To construct figure 1 we use data on housing prices and construction prices from 1987 (which is the first year the Case-Shiller index is available) for the U.S. and the U.K.<sup>9</sup> For Germany and Spain, the first year for which both series are available is 1995. To obtain results in table 1 and to construct figure 2 we use, for each country, the maximum time span covered in the EU KLEMS database. Finally, in the decomposition experiment in table 2, we use the longest period for which data are available for the four countries, which is 1980-2007.

<sup>9</sup>In figure 1, we report data from 1987 for comparison reasons. Notwithstanding, for the U.K. it is possible to construct the same figure starting in 1969. This figure confirms that the major divergence between the housing and the construction price occurs after 1995.

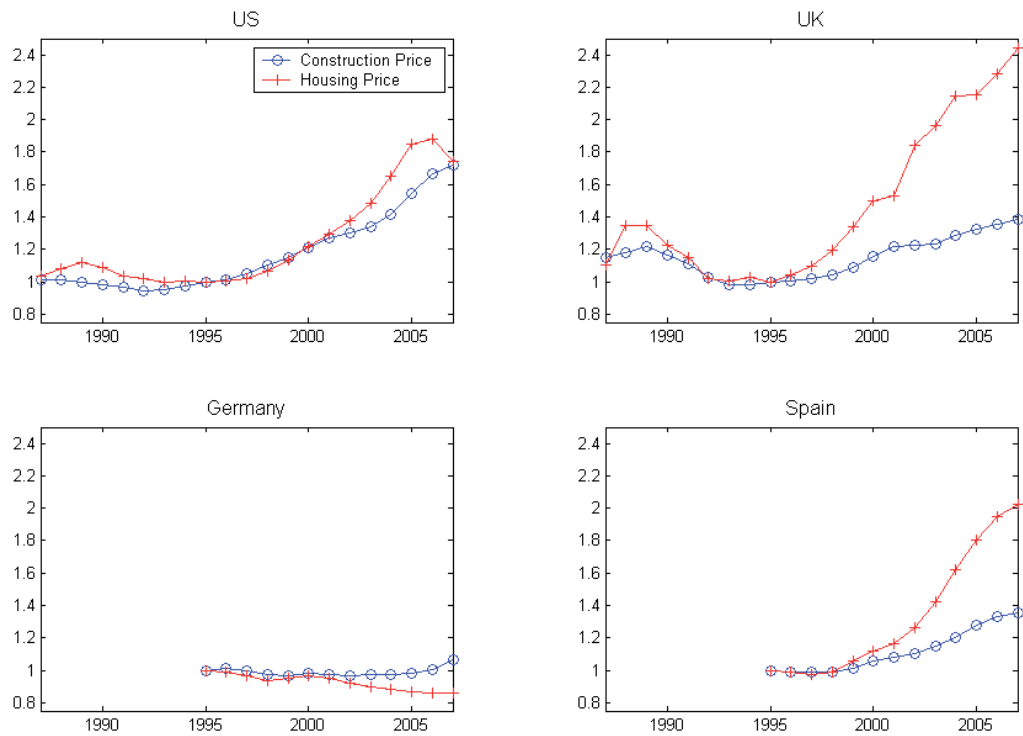


Figure 1: Price of Construction and Price index of Housing for the US, the UK, Germany and Spain. Both indices are divided by the GDP deflator and then normalized to one in 1995. Sources of the Housing Price index are the Case-Shiller for the US, the Department for Communities and Local Government for the UK, Deutsche Bundesbank for Germany and Ministerio de Vivienda for Spain.

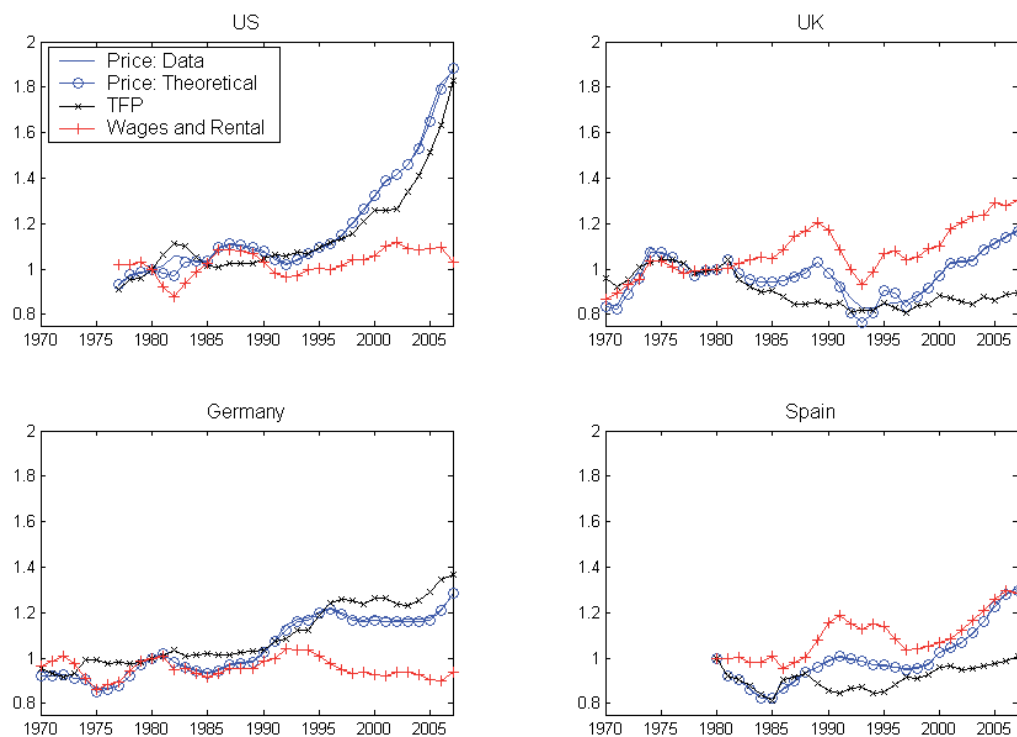


Figure 2: Relative Price of Construction  $P_C/P_G$ , Relative TFP  $A_G/A_C$ , and Relative Rentals  $(R_C^{\alpha_C} W_C^{1-\alpha_C})/(R_G^{\alpha_G} W_G^{1-\alpha_G})$  for the US, the UK, Germany and Spain (1980=1 for all series).

## BANCO DE ESPAÑA PUBLICATIONS

### WORKING PAPERS<sup>1</sup>

- 1032 GABE J. DE BONDT, TUOMAS A. PELTONEN AND DANIEL SANTABÁRBARA: Booms and busts in China's stock market: Estimates based on fundamentals.
- 1033 CARMEN MARTÍNEZ-CARRASCAL AND JULIAN VON LANDESBERGER: Explaining the demand for money by non-financial corporations in the euro area: A macro and a micro view.
- 1034 CARMEN MARTÍNEZ-CARRASCAL: Cash holdings, firm size and access to external finance. Evidence for the euro area.
- 1035 CÉSAR ALONSO-BORREGO: Firm behavior, market deregulation and productivity in Spain.
- 1036 OLYMPIA BOVER: Housing purchases and the dynamics of housing wealth.
- 1037 DAVID DE ANTONIO LIEDO AND ELENA FERNÁNDEZ MUÑOZ: Nowcasting Spanish GDP growth in real time: "One and a half months earlier".
- 1038 FRANCESCA VIANI: International financial flows, real exchange rates and cross-border insurance.
- 1039 FERNANDO BRONER, TATIANA DIDIER, AITOR ERCE AND SERGIO L. SCHMUKLER: Gross capital flows: dynamics and crises.
- 1101 GIACOMO MASIER AND ERNESTO VILLANUEVA: Consumption and initial mortgage conditions: evidence from survey data.
- 1102 PABLO HERNÁNDEZ DE COS AND ENRIQUE MORAL-BENITO: Endogenous fiscal consolidations.
- 1103 CÉSAR CALDERÓN, ENRIQUE MORAL-BENITO AND LUIS SERVÉN: Is infrastructure capital productive? A dynamic heterogeneous approach.
- 1104 MICHAEL DANQUAH, ENRIQUE MORAL-BENITO AND BAZOUMANA OUATTARA: TFP growth and its determinants: nonparametrics and model averaging.
- 1105 JUAN CARLOS BERGANZA AND CARMEN BROTO: Flexible inflation targets, forex interventions and exchange rate volatility in emerging countries.
- 1106 FRANCISCO DE CASTRO, JAVIER J. PÉREZ AND MARTA RODRÍGUEZ VIVES: Fiscal data revisions in Europe.
- 1107 ANGEL GAVILÁN, PABLO HERNÁNDEZ DE COS, JUAN F. JIMENO AND JUAN A. ROJAS: Fiscal policy, structural reforms and external imbalances: a quantitative evaluation for Spain.
- 1108 EVA ORTEGA, MARGARITA RUBIO AND CARLOS THOMAS: House purchase versus rental in Spain.
- 1109 ENRIQUE MORAL-BENITO: Dynamic panels with predetermined regressors: likelihood-based estimation and Bayesian averaging with an application to cross-country growth.
- 1110 NIKOLAI STÄHLER AND CARLOS THOMAS: FIMod – a DSGE model for fiscal policy simulations.
- 1111 ÁLVARO CARTEA AND JOSÉ PENALVA: Where is the value in high frequency trading?
- 1112 FILIPA SÁ AND FRANCESCA VIANI: Shifts in portfolio preferences of international investors: an application to sovereign wealth funds.
- 1113 REBECA ANGUREN MARTÍN: Credit cycles: Evidence based on a non-linear model for developed countries.
- 1114 LAURA HOSPIDO: Estimating non-linear models with multiple fixed effects: A computational note.
- 1115 ENRIQUE MORAL-BENITO AND CRISTIAN BARTOLUCCI: Income and democracy: Revisiting the evidence.
- 1116 AGUSTÍN MARAVALL HERRERO AND DOMINGO PÉREZ CAÑETE: Applying and interpreting model-based seasonal adjustment. The euro-area industrial production series.
- 1117 JULIO CÁCERES-DELPIANO: Is there a cost associated with an increase in family size beyond child investment? Evidence from developing countries.
- 1118 DANIEL PÉREZ, VICENTE SALAS-FUMÁS AND JESÚS SAURINA: Do dynamic provisions reduce income smoothing using loan loss provisions?
- 1119 GALO NUÑO, PEDRO TEDDE AND ALESSIO MORO: Money dynamics with multiple banks of issue: evidence from Spain 1856-1874.
- 1120 RAQUEL CARRASCO, JUAN F. JIMENO AND A. CAROLINA ORTEGA: Accounting for changes in the Spanish wage distribution: the role of employment composition effects.

---

1. Previously published Working Papers are listed in the Banco de España publications catalogue.

- 1121 FRANCISCO DE CASTRO AND LAURA FERNÁNDEZ-CABALLERO: The effects of fiscal shocks on the exchange rate in Spain.
- 1122 JAMES COSTAIN AND ANTON NAKOV: Precautionary price stickiness.
- 1123 ENRIQUE MORAL-BENITO: Model averaging in economics.
- 1124 GABRIEL JIMÉNEZ, ATIF MIAN, JOSÉ-LUIS PEYDRÓ AND JESÚS SAURINA: Local versus aggregate lending channels: the effects of securitization on corporate credit supply.
- 1125 ANTON NAKOV AND GALO NUÑO: A general equilibrium model of the oil market.
- 1126 DANIEL C. HARDY AND MARÍA J. NIETO: Cross-border coordination of prudential supervision and deposit guarantees.
- 1127 LAURA FERNÁNDEZ-CABALLERO, DIEGO J. PEDREGAL AND JAVIER J. PÉREZ: Monitoring sub-central government spending in Spain.
- 1128 CARLOS PÉREZ MONTES: Optimal capital structure and regulatory control.
- 1129 JAVIER ANDRÉS, JOSÉ E. BOSCA AND JAVIER FERRI: Household debt and labour market fluctuations.
- 1130 ANTON NAKOV AND CARLOS THOMAS: Optimal monetary policy with state-dependent pricing.
- 1131 JUAN F. JIMENO AND CARLOS THOMAS: Collective bargaining, firm heterogeneity and unemployment.
- 1132 ANTON NAKOV AND GALO NUÑO: Learning from experience in the stock market.
- 1133 ALESSIO MORO AND GALO NUÑO: Does TFP drive housing prices? A growth accounting exercise for four countries.