

**DOLLAR BORROWING,
FIRM-CHARACTERISTICS,
AND FX-HEDGED FUNDING
OPPORTUNITIES**

2020

BANCO DE ESPAÑA
Eurosistema

Documentos de Trabajo
N.º 2005

Leonardo Gambacorta, Sergio Mayordomo
and José María Serena

**DOLLAR BORROWING, FIRM-CHARACTERISTICS,
AND FX-HEDGED FUNDING OPPORTUNITIES**

DOLLAR BORROWING, FIRM-CHARACTERISTICS, AND FX-HEDGED FUNDING OPPORTUNITIES (*)

Leonardo Gambacorta

BANK FOR INTERNATIONAL SETTLEMENTS AND CEPR

Sergio Mayordomo

BANCO DE ESPAÑA

José María Serena

BANK FOR INTERNATIONAL SETTLEMENTS

(*) The authors thank Hyun Song Shin, Robert McCauley, Patrick McGuire, Andreas Schrimpf, Vlad Sushko, Egon Zakrajsek, and participants at a BIS Research Meeting. Sergio Mayordomo developed parts of this project while visiting the Bank for International Settlements under the Central Bank Research Fellowship Programme. The views expressed are those of the authors and do not necessarily reflect those of the Banco de España or the Bank for International Settlements.

The Working Paper Series seeks to disseminate original research in economics and finance. All papers have been anonymously refereed. By publishing these papers, the Banco de España aims to contribute to economic analysis and, in particular, to knowledge of the Spanish economy and its international environment.

The opinions and analyses in the Working Paper Series are the responsibility of the authors and, therefore, do not necessarily coincide with those of the Banco de España or the Eurosystem.

The Banco de España disseminates its main reports and most of its publications via the Internet at the following website: <http://www.bde.es>.

Reproduction for educational and non-commercial purposes is permitted provided that the source is acknowledged.

© BANCO DE ESPAÑA, Madrid, 2020

ISSN: 1579-8666 (on line)

Abstract

We explore the link between firms' dollar bond borrowing and their FX-hedged funding opportunities, as reflected in a positive corporate basis (the relative cost of local to synthetic currency borrowing). Consistent with previous research, we first document that firms substitute domestic for dollar borrowing when they have higher dollar revenues or long-term assets and when the corporate basis widens. Importantly, our novel firm-level dataset enables to show that when these funding opportunities appear, the currency substitution is stronger for very high-grade firms, as they can offer to investors close substitutes for safe dollar assets. However, firms with higher dollar revenues or long-term assets do not react to changes in the corporate basis. Altogether, the composition of dollar borrowers shifts when the basis widens, as high-grade firms gain importance, relative to firms with operational needs.

Keywords: covered interest rate parity, credit spread, debt issuance, dollar convenience yield, foreign exchange rate hedge, limits of arbitrage.

JEL classification: E44, F3, F55, G12, G15, G23, G28, G32.

Resumen

En este trabajo se estudia la relación entre la financiación de sociedades no financieras con bonos denominados en dólares y las oportunidades de financiación sin riesgo de tipo de cambio en dicha divisa. Estas oportunidades surgen cuando la base es positiva, es decir, cuando resulta más ventajoso emitir un bono en dólares y convertir posteriormente el importe resultante en moneda local. De acuerdo con la literatura anterior, mostramos, en primer lugar, que las empresas emiten bonos en dólares en lugar de hacerlo en la moneda local cuando sus ingresos o activos a largo plazo están denominados en dólares y cuando la base es positiva. Además, nuestros datos a nivel de empresa nos permiten aportar nueva evidencia empírica, según la cual son las empresas con una categoría crediticia muy elevada las que realizan dicha sustitución, dada la existencia de oportunidades de financiación. El motivo es la preferencia de los inversores por activos muy seguros denominados en dólares. Sin embargo, las empresas con ingresos o activos en dólares, es decir, con necesidades operacionales en esa divisa, no reaccionan a dichas oportunidades de financiación. Por todo ello, la composición del conjunto de empresas emisoras de bonos denominados en dólares cambia en un escenario de base positiva: las empresas con una categoría crediticia muy elevada ganan importancia, en detrimento de aquellas con necesidades operacionales en dólares.

Palabras clave: paridad cubierta de tipo de interés, *spread* de crédito, emisión de bonos, *convenience yield* del dólar, cobertura del tipo de cambio, límites de arbitraje.

Códigos JEL: E44, F3, F55, G12, G15, G23, G28, G32.

1. Introduction

Dollar bonds constitute the major alternative to local currency debt for non-US firms, an aspect which research relates to favorable funding conditions or strong operational needs. For instance, non-US firms with dollar revenues (Gopinath and Stein, 2019) or long-term assets (Allayannis et al., 2001) may issue dollar bonds to hedge their asset-side exposures. Simultaneously, dollar borrowing is associated with strong safe asset demand that could lead to FX-hedged cost-saving opportunities (Liao, 2017), in particular for high-grade issuers as shown by Krishnamurthy and Lustig (2019). In any case, dollar borrowing seems intimately related to various firm-level attributes, whose role may change over time.

In this paper, we study how dollar borrowing by non-financial firms headquartered in advanced economies relates to both firm attributes and FX-hedged funding opportunities. The latter arise when the corporate basis, defined as the relative cost of local to synthetic currency borrowing, turns positive. For instance, a positive dollar-euro corporate basis opened in 2012, reflecting that issuing bonds in dollars and swapping the proceeds back into euros was cheaper than directly borrowing in euros.² We find that, on average, non-US firms increase their dollar issuances when the corporate basis widens but the response differs across types of firm. Very high-grade firms react more to the widening of the corporate basis, since they can offer to investors closer substitutes for safe dollar assets. Firms with dollar revenues or long-term assets do not respond to changes in the corporate basis, although their share of dollar borrowing always remains high due to their operational needs for dollar funding.

As a first step of our analysis, we estimate the corporate bases for a series of currencies, relative to the US dollar. We follow the well-established method used by Gilchrist, Yankov and Zakrajsek (2009), Gilchrist and Zakrajsek (2012), and Liao (2017) and obtain the *residualized* credit spread for each currency as a residual from a cross-sectional regression of bond spreads, controlling for bond and firm-specific characteristics. We select all the bonds issued by the subsample of non-financial firms that have issued bonds in at least one currency. Then we estimate a bond-pricing model, regressing the spread over swap rates of the corporate bonds on a number of bond and issuer-characteristics, including a dummy for each currency of denomination. The estimated coefficients for these currency dummy variables are the ones that determine the *residualized* credit spreads, which following Liao (2017) we interpret as differences in the price of credit risk across currencies. For instance, the differential in the price of credit risk of the pairwise EUR-USD is the difference between the coefficients associated

² The strong dollar demand during this period led to the widening of the CIP deviation, which became large enough to compensate for the bond yield differentials.

with the euro (EUR) and the dollar (USD) dummy variables. Finally, we obtain the corporate basis as the sum of the cross-currency basis (ie the deviation from the covered interest rate parity, CIP), and the *residualized* corporate credit spread (ie the deviation in the price of risk across currencies).

Importantly, in the analysis we use the corporate basis, which is a risk-adjusted differential in the corporate covered credit spread, obtained comparing the yields of bonds of same issuers in pairs of currencies (Liao, 2017). Such a comparison is particularly needed for the analysis of the bond market in the last decade, when discrepancies in the price of risk might have widened, constituting a major source of funding opportunities. This differentiates our paper from previous research, which uses broader measures for FX-hedged funding opportunities (McBrady et al., 2013; Black and Munro, 2010), or sovereign yield differentials (McBrady and Schill, 2007).

In our baseline analysis, we focus on non-financial companies headquartered in the euro area, Japan, United Kingdom, Switzerland, and Canada, analysing their bond issuances during the period 2007–2016 in the respective local currency, and the dollar. The sample selection seeks to focus the analysis on the firms that borrow across currencies for both operational needs and/or cost-saving reasons. Our focus on the main advanced economies allows us to leave aside possible concerns regarding borrowings due to incomplete home-currency markets. In other words, our dataset ensures us to work under the hypothesis that market frictions are limited and that currencies are quite close substitutes for the issuers. This is important since previous research has shown that market incompleteness is a driver of foreign currency issuance for companies in emerging economies - for instance, if they need to raise long term funding (Black and Munro, 2010).

Our model of currency switching is based on Allayannis, Brown, and Klapper (2003) and Bruno and Shin (2017). The dependent variable is the fraction of dollar to total (dollar plus local) bond borrowing, at the firm-quarter level. Given that a linear prediction of a proportion variable bounded between zero and one could lead to some specification errors (Cook et al. 2008), we use a generalized linear model (GLM) with a logistic link function as in O'Connor Keefe and Yaghoubi (2016). We explore how the share of dollar borrowing relates to the corporate basis and two key firm-level attributes: their operational needs – reflected in dollar revenues and long-term assets – and their credit risk. As control variables, we include a comprehensive number of firm-specific and time-varying demand factors of foreign currency borrowing.

As anticipated above, our first finding is that a widening of the corporate basis has a positive impact on the share of dollar bonds as a fraction of total (dollar plus local currency) bond borrowing. This indicates that, when cost-saving opportunities arise, non-US firms increase dollar borrowings. The analysis of different subsamples shows that this result is stronger over the period 2013-2016, when distortions in credit markets and CIP deviations were larger. We find similar results when we examine the substitution between local currency and EUR borrowing by non-euro area firms confirming that firms respond to funding opportunities associated with covered FX borrowing independently of the currency employed as the one of reference.

Our results relate our paper to the literature on dollar borrowing, considering firms as opportunistic borrowers such as Black and Munro (2010), McBrady et al. (2013) or Liao (2017). Our major contribution is the analysis of firms' responses to cost-saving opportunities depending on two firms' crucial attributes: their credit risk and their asset-side exposures to the dollar.

We proceed in two steps. First, to examine the role of firms' credit risk, we augment the baseline empirical model adding interactions between the corporate basis and proxies for the firm's risk (measured with the rating, an Altman Z-score-based measure, and the distance-to-default). We find that the dollar-borrowing share of safer firms is more sensitive to the corporate basis. This suggests that they can offer to investors close substitutes of safe dollar assets (Krisnamurthy and Lustig, 2019).

Second, we explore the role of dollar asset-side exposures, measured with their dollar revenues and long-term assets.³ We find that the share of dollar borrowing is higher for firms with dollar long-term assets or revenues, which suggests that firms match the currency composition of asset and liabilities. This is consistent with the hypothesis that the importance of the dollar in international debt markets relates to dollar invoicing in international trade (Gopinath and Stein, 2019), and also with the findings of Allayannis et al. (2001), Aabo (2006), or Hoberg and Moon (2017), among others. In addition, we show that firms with local (and no dollar) asset exposures increase their dollar borrowing when the corporate basis widens. This novel evidence suggests

³ We use data on the supplementary notes of firm financial statements to measure firms' dollar assets exposures. In these notes companies breakdown their financial statements (balance-sheet, income and cash-flow statements) by key operating segments. In particular, we use the geographical breakdown of financial statements, in which firms detail the countries that account for a material fraction of their revenues or assets to proxy if a firm has dollar exposures (i.e., it is exposed to the United States or the Americas) or not. We posit that a firm has dollar asset-side exposures if has long-term assets or revenues in dollars. Data limitations prevent us exploring the role of euro asset-side exposures.

that they substitute local for synthetic local borrowing. We confirm that this result is not related to firms' size, orthogonalizing asset-side exposures and total assets.

Altogether, our results underscore that firm-level attributes are key determinants of their reliance on dollar bond borrowing. Firms with dollar asset-side exposures borrow in dollars to hedge them independently of the sign of the corporate basis. Firms also issue dollar bonds to exploit FX-hedged cost-saving opportunities – but firm attributes play an important role. Safe firms and those without dollar asset-side exposures represent the type of firms that respond more frequently to such opportunities.⁴ As a result, the widening of the corporate basis changes the composition of dollar borrowers: issuers became safer, and the fraction of borrowers with dollar assets or revenues decreases.

The rest of the paper is structured as follows. Section 2 discusses the data. Section 3 presents the empirical model used to obtain covered credit spreads. Section 4 describes the model used to study currency choice. Section 5 summarizes the main results on dollar borrowing by non-US firms and presents several extensions and robustness tests. In Section 6, we show that the risky firms and those with no assets and revenues in dollar are more sensitive to cost-saving opportunities. Section 7 summarises the main conclusions.

2. Data

We construct a matched firm-bond level dataset, merging firms' financial statements with their bond issuances on a consolidated basis. More specifically, our sample consists of 7,211 non-financial firms that were constituents of the main global equity indexes as of December 2016.⁵ We restrict our sample to companies headquartered in the United States, the euro area, Japan, the United Kingdom, Switzerland, and Canada. This sample selection seeks to focus our analysis on those firms that borrow across currencies for hedging operational needs and/or opportunistic reasons but not due to incomplete home-currency markets. The distribution of firms across the six economic areas listed before is as follows: 2,450 of firms are based in the United States, 395 in the euro area, 448 in Japan, 301 in the United Kingdom, 193 in Canada, and 136 in Switzerland.

⁴ For instance, Nippon Telegraph is an example of a very high-grade Japanese corporation with no dollar exposure, which has tapped dollar bond markets recently, as the JPY-USD corporate basis has turned positive.

⁵ Bloomberg Global Index plus additional major indices: Bloomberg European 500 Index, FTSE 350, CRSP US Total Market Index, S&P/ASX 200 Index, FTSE All-Share Index, S&P/Toronto Stock Exchange Composite Index, FTSE Canada Index.

Besides the information on financial statements (assets and liabilities balance-sheet, cash-flow, and income statements), our dataset contains information on the firm functional currency, its two-digit North American Industry Classification System (NAICS) code, and the firm International Securities Identification Number (ISIN). The functional currency indicates the currency associated with the environment where the company conducts most of its activity. Multinationals usually conduct part of their activities using other currencies. Thus, if firms seek to match the currency composition of assets and liabilities, they might raise foreign currency debt. The NAICS code is an industry identifier that serves as a proxy for (time-invariant) operational demand for foreign currency. Finally, we use the ISIN as a common identifier, which is available for all companies in our database since all firms are listed.⁶

In addition to firm-level information, we retrieve (from Thompson Reuters Eikon) all the bonds issued by non-financial corporations over the period 2007Q1–2016Q4. Bond information includes the amount, currency of denomination, issuance and maturity date. For each bond, we identify the direct issuer, the guarantor, and the ultimate parent company of the issuer. This information is essential for a proper matching with the firm dataset, given that we classify bonds as liabilities of the guarantor. If no entity explicitly guarantees them, bonds are classified as liabilities of the ultimate parent company and if the company is not an affiliate, they are classified as liabilities of the direct issuer. This is equivalent to consolidating bonds at the ultimate parent level, but treating standalone affiliates (which issue bonds without the legal backing of its parent companies) as independent companies. Next, we construct firm-quarter series of bond issuances, with currency breakdowns for: US dollar, euro, British pound, Swiss franc, Japanese yen, and Canadian dollar. In the analysis, when this does not create confusion, we will identify the “US dollar” simply as the dollar.

The two datasets are matched using the firm ISIN, which uniquely identifies entities in both datasets. Table 1 shows descriptive statistics for key firm-level variables for non-US firms issuing dollar bonds and for non-euro area (EA) firms issuing EUR bonds.

< Insert Table 1 here >

Table 2 reports information on the number of bonds issued in each of the six currencies over time in total (Panel A), by local (Panel B) and by foreign (Panel C) issuers in our sample. The US dollar and the euro are the two foreign currencies most widely used in bond issuances. We will conduct our baseline analysis on the issuances in US dollars as the foreign currency, while

⁶ We drop duplicated firms in case a company has more than one common share. All the data is from Thompson Reuters Eikon.

we will use the euro for some checks. There are insufficient bond issuances in other foreign currencies for us to conduct a proper econometric analysis.

< Insert Table 2 here >

We exclude US firms from our baseline analysis. Unlike firms in any of the other five countries/economic areas, US firms finance themselves mainly in dollars and the proportion of bonds issued in foreign currency is only around 10% (see Figure 1). Given such a home bias, it seems reasonable to exclude them when studying the substitution of local vs foreign currency bonds. Nevertheless, we extend the baseline analysis to include US firms considering issuances in EUR as the foreign currency (ie, the second most frequent currency for bond issuances in foreign currency), which will help us to validate the main results. The distribution of firms issuing dollar bonds by region is the following: 253 in Japan, 208 in the Euro Area, 126 in the United Kingdom, 101 in Canada, and 41 in Switzerland.

< Insert Figure 1 here >

We also use information on the prices of all bonds (denominated in any of the six currencies) issued by any firm around the world to obtain the residualized corporate basis, as will be detailed in the next section. Finally, we use the supplementary notes of the financial statements, available at Thompson Reuters Eikon, to measure firms' dollar assets exposures. These notes are compulsory under IFRS and the US GAAP – to which all firms in our sample are subject – and include additional information not included in the balance-sheet, income, and cash-flow statements. Specifically, we exploit the fact that companies break down some financial statement items by key operating segment, such as business lines and geographical regions.⁷ We focus on the geographical breakdown of long-term assets and revenues. The appendix contains an example for one firm in our sample.

We examine the full list of categories (names of countries and regions) and define as a “dollar region” either the United States or the Americas region, when the information is not detailed at country level but at a broader region level. Thus, we assume that a given firm has dollar asset-side exposures if it has long-term assets in, or revenues from, the “dollar region”. To compute these exposures, we use the last available financial statement for each firm. We are assuming that any exposure to the Americas region implies some exposure to the dollar and that the exposures are relatively uniform through the whole sample period. We explore the evolution of the geographical breakdown of exposures for a handful of firms of different

⁷ These breakdowns seek to show which business lines/regions are important for firms, and to illustrate how they contribute to companies' financial performance.

sectors, and conclude that the above assumption is not restrictive, since exposures tend to be stable over time.⁸

3. Measuring the corporate basis

We gauge the cost-saving opportunities of conducting synthetic local currency borrowing relative to local currency borrowing by calculating a measure of corporate basis. The corporate basis is the sum of the currency *c*-USD deviation in the covered interest rate parity, and the differential in the residualized credit spread. The more positive the corporate basis, the cheaper it is to borrow in the foreign currency relative to home currency borrowing.

3.1. Residualized corporate credit spreads

We use individual bond yields to compute the residualized credit spreads, which are differentials in credit risk spreads across currencies. We follow the methodology proposed by Liao (2017), and hence we estimate these differentials from monthly corporate bond spreads, which are calculated as the average bond yield in a given month over the swap rate with a similar maturity.

Our initial database includes a total of 147,579 bonds issued during the period 2004Q1–2016Q4 by any firm around the world with a maturity at issuance equal or larger than one year. Since we are interested in price differentials between the six major currencies: US dollar (USD), euro, (EUR) British pound (GBP), Swiss franc (CHF), Japanese yen (JPY), and Canadian dollar (CAD). Hence, we disregard bonds issued in other currencies. In addition, we exclude all bonds without an ISIN, since we need it to match bond prices in secondary markets. This leaves us with 50,971 bonds, for which we have the original and residual maturity, amount issued, and currency of denomination. Finally, we drop callable bonds and those in which the issuer is not identified. The final sample consists of 40,614 corporate bonds, which have been issued by a total of 5,082 companies.⁹

To construct differentials in how credit risk is priced across pairs of currencies, we restrict our analysis to those issuers with outstanding bonds in at least two of the six currencies considered in our analysis, one of them being the reference currency. We construct two differentials in which the currencies of reference are the US dollar and the euro. Thus, for the case in which

⁸ Constructing a time-varying measure is difficult, as the lack of harmonisation over time unfortunately does not allow a perfect comparison among the categories that need to be examined. Since exposures tend to be stable over time, we think there is little gain in defining a time-varying measure.

⁹ As in the firm-bond level dataset, we define the issuer as the bond-guarantor, ultimate parent company of the issuer, or direct issuer.

the US dollar (euro) is the reference currency, we use issuers with outstanding bonds in both the US dollar (euro) and any of the other five currencies. In total 416 (398) firms, out of the 5,082 firms considered, have issued bonds in US dollar (euro) and any other of the remaining five currencies over the sample period. Issuance in more than two currencies is infrequent: 103 firms have issued in three currencies, 45 in four, 24 in five, and 12 in the six currencies considered.

The number of bonds issued by companies that tap more than one currency market at the same time is 6,130 conditioned on having issued in dollars and 6,058 conditioned on having issued in euros. Next, we estimate for each quarter t the following cross-sectional regression, in which the bond spread over the swap curve for each bond i , denominated in currency c , issued by firm f , with time-to-maturity m , age a , and rating r , is regressed on a series of bond characteristics, an issuer dummy, and a currency dummy:

$$S_{icfmart} = \alpha_{ct} + \beta_f + \gamma_m + \theta_a + \delta_r + \varepsilon_{icfmart}, \quad t = 2004Q1, \dots, 2016Q4 \quad (1)$$

where α_{ct} denotes a vector of currency-quarter fixed effects (ie, dummy variables that are equal to one for each quarter and each of the six currencies considered in our paper, where $c = \text{CAD, CHF, EUR, GBP, JPY, USD}$) and zero otherwise. β_f indicates firm fixed effects, which control for any other bond characteristics that are common at the firm level (ie, industry, location,...). We classify bonds in several buckets of maturities (ie, 1-3 years, 3-7 years, 7-10 years, and more than 10 years) and use a set of fixed effects for each of these buckets (γ_m). Another important dimension to consider is the bond term and for this reason we use fixed effects for five age buckets (θ_a): less than 1 year, 1-3 years, 3-7 years, 7-10 years, and more than 10 years. In addition, we use fixed effects for investment grade and high-yield rating categories (δ_r) based on Standard & Poor's ratings on long-term debt. The bonds whose rating is not available are classified in the same bucket as those with high-yield category. Bond spreads are retrieved from Datastream whereas, as described in Section 2, bond-specific variables are obtained from Thompson Reuters Eikon.

The estimated vector of coefficients $\hat{\alpha}_{ct}$ measures the residualized credit spread controlling for all other observables. Following Liao (2017), we use the residualized credit spread differential to measure the “law-of-one-price” violation of credit risk between currencies. Specifically, for the case in which we use the dollar (euro) as the reference currency, the currency-quarter fixed effect estimates $\hat{\alpha}_{ct} - \hat{\alpha}_{USDt}$ ($\hat{\alpha}_{ct} - \hat{\alpha}_{EURt}$) measure the deviation in the pricing of credit risk in currency c relative to the pricing of credit risk in the dollar (euro). We denote, hereafter, the differential in the residualized credit spread of a given currency c with respect to the dollar and the euro as RCS_{USD}^c and RCS_{EUR}^c , respectively. This estimation method enables us to match bonds

of similar characteristics issued by the same firm, with the only difference being their currency of denomination.

Figure 2 plots the differentials of the EUR, CAD, JPY, CHF, and GBP relative to the USD, over the period 2007Q1–2016Q4. Differentials are in general negative, signalling that the price of risk has been cheaper in all currency areas, relative to the dollar bond markets. However, the differential sometimes reaches positive territory, with the exception of the differential with EUR and JPY, which remains constantly negative. It is worth remembering that these differentials are computed controlling for issuer characteristics and therefore they represent cost-saving opportunities associated with the currency of the denomination of bonds.

< Insert Figure 2 here >

3.2. Corporate basis: currency risk-adjusted differential in corporate covered credit spreads

The corporate basis gauges the cost-saving opportunities of conducting synthetic local currency borrowing relative to local currency borrowing. In a synthetic local currency bond issuance, the firm issues in foreign currency (in this case, the dollar), and swaps the proceeds into its home currency. Thus, the corporate basis of currency c relative to the USD, CB_{USD}^c , is equivalent to the sum of the currency c -USD deviation in the covered interest rate parity (XC_{USD}^c) and the residualized credit spread (RCS_{USD}^c):

$$CB_{USD}^c = XC_{USD}^c + RCS_{USD}^c \quad (2)$$

Following Liao (2017), we measure the deviation in the interest parity by means of the five-year cross-currency swap basis. Persistent and wide cross-currency swap bases (XC_{USD}^c) have emerged for several currencies over the last years, as a result of strong FX hedging demand and limits to arbitrage due to financial intermediaries' balance-sheet constraints (Sushko et al., 2016 and Du et al, 2018). Figure 3 depicts the corporate basis, which summarises the FX-hedged funding opportunities for corporate borrowers. Positive corporate bases emerge for several currencies despite negative residualized credit spreads, since constraints on the capacity of intermediaries to provide FX hedges can result in the emergence of wider CIP deviations (cross-currency basis). A positive EUR-USD basis means that borrowing in dollars and swapping to euros saves some basis points. The corporate basis of euro area firms became positive during short periods of 2009, 2011 and 2012 (see Figure 4).

< Insert Figures 3 and 4 here >

4. Empirical model

Our dependent variable is the fraction borrowed in dollar-denominated bonds by a given non-US firm i , in country c , with rating category r , in quarter t relative to the sum of local currency and dollar borrowing in that quarter (FCR_{icrt}). This variable takes the value of one when all the debt is raised in dollars, and zero when is raised in the home currency. To mitigate the estimation problems derived from the fact that the dependent variable is a proportion variable bounded between zero and one, we use a generalized linear model (GLM) with a logistic link function as in O'Connor Keefe and Yaghoubi (2016):¹⁰

$$E(FCR_{icrt} | CB_{USD,t}^c, Y_{icrt-1}) = G(\alpha_c + \alpha_t + \alpha_r + \beta_1 CB_{USD,t}^c + \beta_2 USD_i + \gamma W_{it-1} + \delta Z_{it-1} + \varepsilon_{icrt}) \quad (3)$$

where $G(\cdot)$ is the logistic link function, $\alpha_c, \alpha_t, \alpha_r$ indicate currency, year-quarter and rating category fixed effects. The variable $CB_{USD,t}^c$ refers to the corporate basis defined in equation (2) and accounts for the funding opportunities in the local currency c in quarter t as compared to dollar. USD_i is a dummy that is equal to one if the firm has long-term assets or revenues denominated in dollars (ie, asset-side exposure). As discussed in the previous section, since we focus on switching between the home currency and the dollar, we have defined the measures of funding cost differentials in the home currency relative to the dollar. In addition we include a set of lagged firm specific control variables (W_{it-1}) that capture time-varying characteristics which can be related to ability to borrow in foreign currency. These firm characteristics are: (i) firm size (measured with the logarithm of total assets), (ii) price-to-book ratio, (iii) operating margin, (iv) a dummy variable that indicates if the firm had previously issued bonds in dollar and (v) firm risk (measured by the leverage ratio).

Finally, we include several economic area/country lagged specific variables (Z_{it-1}) that could also affect the willingness of firms to borrow in foreign currency. These additional controls are: (i) exchange rate volatility; (ii) public debt to GDP; (iii) current account balance to GDP; (iv) GDP growth; and (v) the sovereign yield differential based on the five-year maturity. All explanatory variables are standardized (ie, mean zero and standard deviation one) to facilitate their interpretation and comparison. The standard errors are clustered at the currency- quarter level.

¹⁰ See Kieschnick and McCullough (2003) or Cook et al (2008) for more details on the specification errors in using a linear prediction equation to model a dependent variable that is a fraction.

5. Corporate basis and dollar borrowing by non-US firms

Table 3 contains the results obtained from the estimation of equation (3). Column (I) refers to the whole sample period (ie, 2007Q1–2016Q4). We find that the corporate basis has a positive impact on the ratio of the amount of bonds issued in dollar relative to total bond borrowing in local currency and dollar. This is consistent with firms increasing their synthetic local borrowing, that is, issuing dollar bonds and swapping them into their home market when cost-saving opportunities arise. In columns (II) and (III) we split the sample in two periods: crisis period (2007Q1–2012Q2) and post-crisis period (2012Q3–2016Q4). This split enables us to verify that firms exploit funding opportunities in a significant way in the post-crisis period, when bond issuance by the non-financial sector started to grow at a fast pace.¹¹

< Insert Table 3 here >

The signs associated with the control variables are consistent with the different capital structure theories summarized in Allayannis, Brown, and Klapper (2003) for the case of the currency choice. The sign obtained for firm size is positive and significant, consistent with the market depth hypothesis according to which large firms are more likely to exhaust local currency lending markets and so depend to a greater extent on foreign markets.

The negative and significant sign obtained for leverage suggests that access to foreign financial markets is more restricted for riskier firms, as will be analyzed in later sections in more detail. The operating margin exhibits a positive coefficient, which is higher for the crisis period, although not statistically significant. Firms that are more profitable tend to be less restricted to access foreign financial markets in turbulent periods.

The dummy “previous issuer”, which indicates if the firm has issued dollar-denominated debt in the past, is positive and significant. This result probably reflects the role of the monitoring and agency cost theory according to which firms that issue debt in foreign markets are exposed to closer scrutiny. In addition, these firms are able to develop a reputation effect in foreign markets that make it easier for them to issue a larger stock of debt in foreign currencies.

Importantly, the sign associated with the dummy variable denoting the existence of dollar-denominated assets or revenues is positive and significant. The latter finding is consistent with the view that the roles of the dollar in trade and debt markets are intertwined (Gopinah and Stein, 2018). It is also consistent with recent evidence of Aabo et al. (2015) in the European

¹¹ We consider that the post-crisis period starts after ECB President Mario Draghi’s promise in May 2012 to do “whatever it takes” to preserve the euro.

context, showing that firms with direct asset exposure to euros, pounds, or Swedish kronar issue, on average, more bonds denominated in these currencies for hedging purposes (see also Allayannis et al., 2001; Aabo, 2006; or Hoberg and Moon, 2017; among others). The fact that foreign currency asset-side exposures increase firms' issue of bonds in foreign currency suggests that firms aim at avoiding the build-up of balance-sheet currency mismatches.

In Table 4, we extend the baseline results reported in Table 3 to a different sample of non-euro area firms by analyzing their EUR borrowing. In this case, we also consider US firms. The number of EUR bonds issued by non-euro area firms is much smaller and, as a result, the proportion of censored observations is much higher than in the analysis that uses the dollar as the reference currency. Therefore, the results should be taken with caution. With this caveat in mind, our main finding is that firms also respond to a positive corporate basis relative to the EUR, increasing their fraction of EUR borrowing during the post-crisis period. This evidence also supports the idea that firms may engage in synthetic local borrowing in euro area markets.

< Insert Table 4 here >

6. The role of firm-specific characteristics

6.1. Credit risk

The corporate basis tends to widen when CIP deviations are wider, which means that the demand for dollar safe assets is stronger (Liao, 2017). High-grade firms are natural candidates to benefit from this arbitrage funding opportunity, since as stated by Krishnamurthy and Lustig (2019) they can offer to investors closer substitutes of dollar safe assets in a context of safe assets' scarcity. We now test whether the previous statement is true and explore if firms' responses to funding opportunities depend on their risk as measured from their credit rating. Thus, we extend equation (3) with the interaction of our measure of funding opportunities (CB) and a dummy for very high-grade or safe firms:

$$E(FCR_{icrt} | CB_{ct}, Y_{icrt-1}) = G(\alpha_c + \alpha_t + \alpha_r + \beta_1 CB_{ct} + \beta_2 Safe_{it-1} + \beta_3 CB_{ct} \cdot Safe_{it-1} + \beta_4 USD_i^X + \beta_5 CB_{ct} \cdot USD_i^X + \gamma W_{it-1} + \delta Z_{it-1} + \varepsilon_{icrt}) \quad (4)$$

where $Safe_{it-1}$ is a dummy variable that is equal to one if the firm's rating is in the very high-grade rating category, which we define as a rating above AA-, and zero if it is a high-yield, low investment grade or a non-rated firm (hereafter we refer to them as the "control group"). To

interpret the interaction effect, we compute the marginal effect of a one standard deviation increase in the CB on the share of dollar borrowing, for two types of firm: high-grade firms and the control group.

The results are summarized in column (I) of Table 5. We find that only very high-grade firms increase their dollar share in response to funding opportunities. Hence, the results indicate that safe firms are more prone to currency migration because of investors' appetite for dollar safe assets. In column (II) of Table 5, we restrict the sample to those firms with a rating and results are very similar.

One may argue that the effects associated with the firm rating category could be due, at least in part, to the firm size, given that very high-grade firms are more than three times larger than those in the control group. To disentangle the effect that is really due to firm risk but not to firm size, we extend the analyses further by matching very high-grade firms and the control group, according to their total assets. More specifically, we use coarsened exact matching (CEM) techniques to balance the size of groups of very high-grade firms and the control group. We use the baseline-matching algorithm (Iacus, King, and Porro, 2008) and obtain weights for each observation to adjust the imbalance in the size of very high-grade firms and the ones in the control group. Then, we run weighted regressions using the CEM weights. Since firms in a very high-grade rating category are larger, this methodology overweights small firms with very high-grade rating category (and large firms in the control group). The results are reported in column (III) of Table 5 and are fully consistent with those in column (I) and (II).

< Insert Table 5 here >

In columns (IV) to (IV), we extend the previous analysis to the issuances of bonds denominated in euros. Importantly, once we use the CEM technique, we do not find a significant response of safe firms to the deviations in the corporate basis. This may reflect that the positive corporate bases relative to the euro are driven by the strong compression in credit spreads in euro-denominated bonds (relative to home currency bond markets), and do not signal a strong preference of euro-denominated safe assets by international investors.

In order to corroborate the above results, we consider additional proxies for firm risk and estimate the GLM model using new CEM weights to adjust the imbalance in the size of safe firms for each risk measure. The analysis is reported in Table 6. In column (II) we use a risk measure based on the Altman Z-score (Altman, 1968). More specifically, we use a dummy variable that is equal to one if the firm is above the percentile 75 of the distribution (ie, the Z-score above 2.8). Results are fully consistent with those contained in column (I), which

reproduce column (III) of Table 5 for comparability reasons, and suggest that safe firms arbitrage the deviations in the corporate basis to a higher extent. Column (III) contains the results obtained for an alternative proxy that classifies firms as safe when the distance to default is in the top quartile of the distribution for the firms in our sample. The distance to default is obtained as in Bharath and Shumway (2008), who use a reduced-form model inspired by the model to price corporate bond debt in Merton (1974). In this case the results are also qualitatively similar.

< Insert Table 6 here >

6.2. Dollar assets

Dollar asset-side exposures increase firms' dollar borrowing, since companies tend to match the currency composition of asset and liabilities. For the same reason, they may dampen firms' response to the corporate basis, which reflects the scope for substituting local for synthetic local currency debt. To examine this aspect, we augment equation (3) with an interaction term between the corporate basis and the dummy variable for asset-side dollar exposures used in equation (2):

$$E(FCR_{icrt}|CB_{ct}, Y_{icrt-1}) = G(\alpha_c + \alpha_t + \alpha_r + \beta_1 CB_{ct} + \beta_2 USD_i^X + \beta_3 CB_{ct} \cdot USD_i^X + \gamma W_{it-1} + \delta Z_{it-1} + \varepsilon_{icrt}) \quad (5)$$

The marginal effects reported in column (I) of Table 7 are obtained for firms with and without dollar asset exposures. The results show that only firms without dollar asset-side exposures issue dollar-denominated bonds when the corporate basis widens.

< Insert Table 7 here >

Next, we distinguish between firms with dollar long-term assets and revenues (that is, operational or accounting exposures, respectively). Specifically, we define two binary variables: one measuring dollar accounting exposures (USD_i^{LTA}) that takes value one if a firm has long-term assets in dollars and another one assessing dollar operational exposures (USD_i^R) that takes value one if a firm has dollar revenues. According to Aabo, Hansen, and Muradoglu (2015), the two measures convey different information: the accounting exposure proxy reflects long-term balance-sheet exposures, whereas the operational exposure proxy gauges short-term cash-flow exposures. The distinction is important, since the two types of exposure are associated with different hedging needs. Columns (II) and (III) of Table 7 show, alternatively, the results obtained using the dummy for accounting and operational exposures, and their interactions with the corporate basis. Firms without dollar long-term assets or revenues in

dollars issue dollar-denominated bonds when the corporate basis widens, whereas firms with dollar long-term assets or revenues do not.

The size of dollar asset-side exposures varies considerably across firms, with some firms reporting positive but negligible exposures. As a result, our binary variables do not perfectly gauge the importance of dollar asset-side exposures. To overcome this problem, we substitute each binary variable for a continuous measure: the fraction of dollar revenues (long-term assets) to total revenues (long-term assets). A second issue associated with the measures of dollar exposures – in the form of either assets or revenues – is that they may reflect firm size. To make sure we are not capturing the impact of firm size on the share of dollar borrowing, we construct an orthogonalized ratio of dollar exposures, regressing each of the ratios on total assets and using the residual in place of the continuous measure of exposures. Column (IV) reports the results using the ratio of dollar long-term assets whereas column (V) contains the results obtained when we use the orthogonalized ratio. Columns (VI) and (VII) are analogous to the two previous columns but using the measure of dollar revenues.

The marginal effects in columns (IV) to (VII) are obtained for firms without and with dollar asset-side exposures (defined as one standard deviation above the mean). Results in columns (IV) and (V) show that firms without long-term dollar assets are more likely to issue dollar bonds when the corporate basis widens than their peers. Firms without dollar revenues are also less responsive to the corporate basis, independently of whether we measure their exposures with a continuous variable (column VI) or if it is orthogonalized (column VII).

Taken together, these results suggest that only firms *without* dollar exposures react to deviations in the corporate basis (column I). This result holds for accounting (columns II, IV and V) and operational exposures (columns III, VI and VII). The last finding is consistent with McBrady and Schill (2007), but importantly we complement their evidence documenting that firms without accounting exposures also react more to FX-hedged cost-saving opportunities.

A caveat of our analysis is that we have measured operational dollar exposures exploiting the geographical breakdown of assets disclosed in the financial statements. However, companies outside the United States may have operational exposures when they operate in certain sectors. Thus, we modify our measure of operational exposures, and assume that firms from the “Utilities” and “Mining, Quarrying, and Oil and Gas Extraction” sectors have dollar operational exposures (they represent 11% and 7% of the firms in our sample, respectively).¹²

¹² NAICS codes 20 and 21.

The results (not reported for the sake of brevity) are very similar to those obtained in Table 7, which further confirms that firms with no dollar asset-side exposures are more sensitive to FX-hedged funding opportunities.

6.3. Composition of the pool of borrowers

In this section, we study the effects of the corporate basis conditioning jointly on firms' risk and dollar asset-side exposures. In particular, we extend equation (3) with the interaction of the corporate basis and (i) the high-grade firm dummy (equal to one when the rating is above AA- and zero otherwise)¹³, and (ii) measures of asset-side exposure to the dollar. Specifically, we consider three proxies for dollar exposures. In column (I) of Table 8, we use a composite measure: the simple average of the ratio of dollar revenues and the ratio of long-term dollar assets. As in the previous section, each ratio is orthogonalized by regressing it on total assets. In columns (II) and (III) we use the (orthogonalized) ratio of long-term dollar assets and revenues, respectively.

The results imply that the composition of dollar borrowers changes when the corporate basis widens. Specifically, a widening in the corporate basis increases the fraction of dollar bonds issued by very high-grade firms and firms with no dollar assets or revenues.

Then, we tackle potential biases due to the larger size of very high-grade firms and estimate the GLM model using CEM weights, which are obtained as in Section 6.1. Column (IV) shows the results obtained when we use the average of the (orthogonalized) ratio of dollar revenues and the (orthogonalized) ratio of long-term dollar assets whereas columns (V) and (VI) refer the (orthogonalized) ratio of long-term dollar assets and revenues, respectively. The results are qualitatively similar to those obtained in columns (I) – (III).

< Insert Table 8 here >

To evaluate the economic magnitude of our findings, we depict in Figure 5 the impact of the corporate basis on dollar borrowing for the two types of firm based on their risk and exposure to the dollar. In the left-hand panel we plot the impact of the corporate basis on dollar borrowing by very high-grade firms and the other firms (control group), using the results reported in column I of Table 8. The fraction of dollar borrowing by very high-grade firms (red dots) increases by 23 pp when the corporate basis increases from its mean value to twice its standard

¹³ We exclude non-rated firms from this analysis.

deviation. The fraction of dollar borrowing by the firms in the control group (blue dots) remains almost flat at 25 pp independently of the level of the corporate basis.

The right-hand panel of Figure 5, also based on the results reported in column I of Table 8, shows the increase in the fraction of dollar borrowing by firms with local assets and dollar assets. For companies with assets in local currencies (red dots), a similar widening in the corporate basis (twice the standard deviation) leads to a 15 pp increase in the share of dollar borrowing. Despite this increase, the share of dollar borrowing by firms with dollar exposures (blue dots) is constantly higher than the one of firms without dollar exposures independently of the change in the corporate basis but remains flat at 35 pp. Comparing the red dots in the two panels in Figure 5, it is evident that the corporate basis increases dollar borrowing by very high-grade firms to a much greater extent, relative to firms with local currency assets (ie the red dots in the left-hand panel are structurally higher than those in the right-hand panel).

< Insert Figure 5 here >

7. Conclusions

In this paper, we analyse how firms headquartered in advanced economies switch their bond borrowing across currencies in response to FX-hedged cost-saving opportunities. We find that non-US firms increase their dollar issuances when the pairwise differential in the corporate basis (defined as the relative cost of local to synthetic currency borrowing) is larger than the cost of swapping the dollar proceeds into domestic currency.

We also show that the response differs across types of firm. Very high-grade firms take greater advantage of FX hedged funding opportunities, as they can offer investors a closer substitute for dollar safe assets in the context of a scarcity of safe assets. This result holds for different measures of firms' credit risk (ie, high Altman z-score, or greater distance to default). Similarly, firms without dollar-asset exposures react more to the widening of the corporate basis. By contrast, firms with higher dollar revenues or long-term assets borrow more heavily in dollars, but they do not react to changes in dollar funding opportunity, reflecting their operational needs. Altogether, the composition of dollar borrowers shifts when the corporate basis widens, as high-grade firms gain importance, relative to firms with operational needs.

References

- Aabo, T. (2006). “The Importance of Corporate Foreign Debt in Managing Exchange Rate Exposure in Non-Financial Companies”. *European Financial Management*, 12, 633-649.
- Aabo, T., Hansen, M. A., Muradoglu, Y. G. (2015). “Foreign Debt Usage in Non-Financial Firms: A Horse Race between Operating and Accounting Exposure Hedging”. *European Financial Management*, 21, 590-611.
- Allayannis, G., Brown, G.W., Klapper, L.F. (2003). “Capital structure and financial risk: evidence from foreign debt use in East Asia”. *Journal of Finance*, 58, 2667–2709.
- Allayannis, G. Ihrig, J., and Weston, J. P. (2001). “Exchange-Rate Hedging: Financial versus Operational Strategies”, *American Economic Review*, 91, 391-395.
- Altman, E. I. (1968). Financial Ratios, Discriminant Analysis and the Prediction of Corporate Bankruptcy. *Journal of Finance* 23, 589-609.
- Bharath, S. T., and Shumway, T. (2008). Forecasting Default with the Merton Distance to Default Model. *Review of Financial Studies*, 21, 1339-1369.
- Black, S., and A. Munro (2010). “Why Issue Bonds Offshore?”, BIS Papers 52, 1-47.
- Bruno, V., and Shin, H. S. (2017). “Global dollar credit and carry trades: A firm-level analysis”, *Review of Financial Studies*, 30, 703-749.
- Cook, D., Kieschnick, R., and McCullough, B. D. (2008) “Regression analysis of proportions in finance with self selection”, *Journal of Empirical Finance*, 15, 860 – 867.
- Du, W., Tepper, A., and Verdelhan, A. (2018). “Deviations from Covered Interest Rate Parity”, *The Journal of Finance*, 73, 915-957.
- Faust, J., S. Gilchrist, J. H. Wright, and Egon Zakrajšek (2013) “Credit spreads as predictors of real-time economic activity: A Bayesian model-averaging approach. “ *Review of Economics and Statistics* 95(5), 1501–1519.
- Gilchrist, S., V. Yankov, and E. Zakrajšek. (2009). “Credit Market Shocks and Economic Fluctuations: Evidence from Corporate Bond and Stock Markets”, *Journal of Monetary Economics* 56 (4), 471–493.
- Gilchrist, S. and E. Zakrajšek. (2012). “Credit Spreads and Business Cycle Fluctuations”, *American Economic Review*, 102(4), 1692–1720.
- Gilchrist, S., and C. P. Himmelberg (1998). ‘Investment: Fundamentals and finance.’ In *NBER Macroeconomic Annual*, ed. B. S. Bernanke and J. J. Rotemberg (Cambridge: The MIT Press), 223–274.

- Gopinath, G., and J. C. Stein (2018). “Trade Invoicing, Bank Funding, and Central Bank Reserve Holdings.” *American Economic Review Papers and Proceedings* 108, 542-46.
- Guedes, J., and T. Opler,. (1996). “The Determinants of the Maturity of Corporate Debt Issues”, *Journal of Finance*, 51, 1809-1833.
- Hoberg, G., and S. K. Moon, (2017). “Offshore activities and financial vs operational hedging”, *Journal of Financial Economics*, 125, 217-244.
- Iacus, S., G. King, and G. Porro (2008). “Matching for Causal Inference Without Balance Checking”, mimeo.
- Kieschnick, R., and McCullough, B. D. (2003). “Regression analysis of variates observed on (0,1): percentages, proportions and fractions”, *Statistical Modelling*, 3, 193.
- Krishnamurthy, A. and H. Lustig (2019). “Mind the Gap in Sovereign Debt Markets: The U.S. Treasury basis and the Dollar Risk Factor”, mimeo.
- Liao, G. Y. (2017). “Credit Migration and Covered Interest Rate Parity”, Project on Behavioral Finance and Financial Stability Working Paper Series.
- Maggiori, M., B. Neiman, and J. Schreger (2018). “International Currencies and Capital Allocation” NBER Working Paper No. 24673.
- McBrady, M. R., and Schill, M. J. (2007). “Foreign currency-denominated borrowing in the absence of operating incentives”, *Journal of Financial Economics*, 86, 145-177.
- McBrady, M. R., and Schill, M. J. (2013). “Opportunistic foreign currency debt issuance”, in G. Caprio (ed.), *The Evidence and Impact of Financial Globalization*, Elsevier, North Holland.
- Merton, R. C. (1974). “On the Pricing of Corporate Debt: The Risk Structure of Interest Rates”, *Journal of Finance*, 29, 449-70.
- O’Connor Keefe, M. and Yaghoubi, M (2016). “The influence of cash flow volatility on capital structure and the use of debt of different maturities”, *Journal of Corporate Finance*, 38, 18-36.
- Papke, L. E., and J. M. Wooldridge (1996). “Econometric methods for fractional response variables with an application to 401(k) plan participation rates.” *Journal of Applied Econometrics*, 11(6), 619–632.
- Sushko, V., Borio, C., McCauley, R., and McGuire, P. (2017). “The failure of covered interest parity: FX hedging demand and costly balance sheets”, BIS Working Papers, 590.

Appendix. Geographical segment breakdown

In this appendix, we describe the use of the geographical breakdown of long-term assets and revenues provided in the notes to the financial statements. According to the International Financial Reporting Standards (IFRS), public companies are obliged to disclose information about their operating segments, products and services, the geographical areas in which they operate, and their major customers. In particular, they need to disclose their non-current assets and revenues by area and, when exposures are material, by individual country.¹⁴ As part of the consolidated financial statements, the geographical breakdowns are audited and thus duly reflect the asset-side exposures of companies.

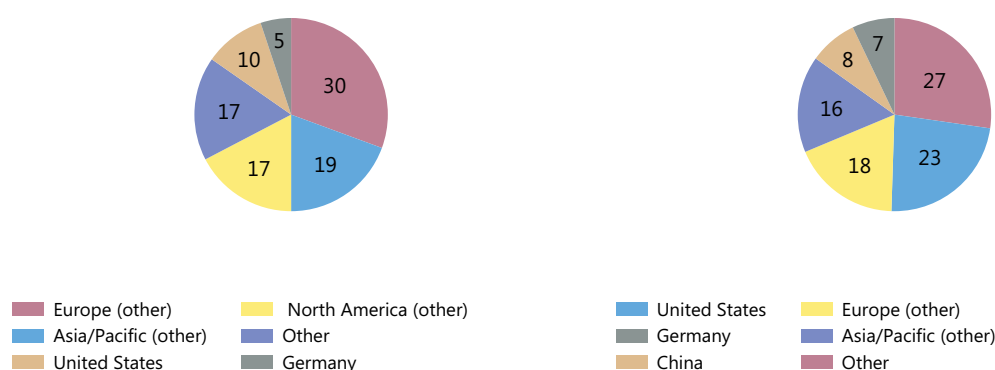
Example of geographical segment breakdown. Linde AG

In per cent of total

Figure A.1

Long-term assets

Revenues



Source: Authors' elaboration, Thompson Reuters Eikon

Figure A.1 provides the geographical segment breakdown disclosed by Linde AG in 2017. Linde AG is a Germany-based company engaged in industrial gases manufacture. The company books 10% of its long-term assets in the United States (left-hand side of the figure), where it obtains 23% of its external revenues. Consistently, with its high geographical diversification, Linde AG had 18 outstanding bonds as of April 2019, issued in four different currencies (US dollar, euros, British pound, and Australian dollar).¹⁵ This example suggests that the geographical location of assets and revenue conditions the currency denomination of bonds.

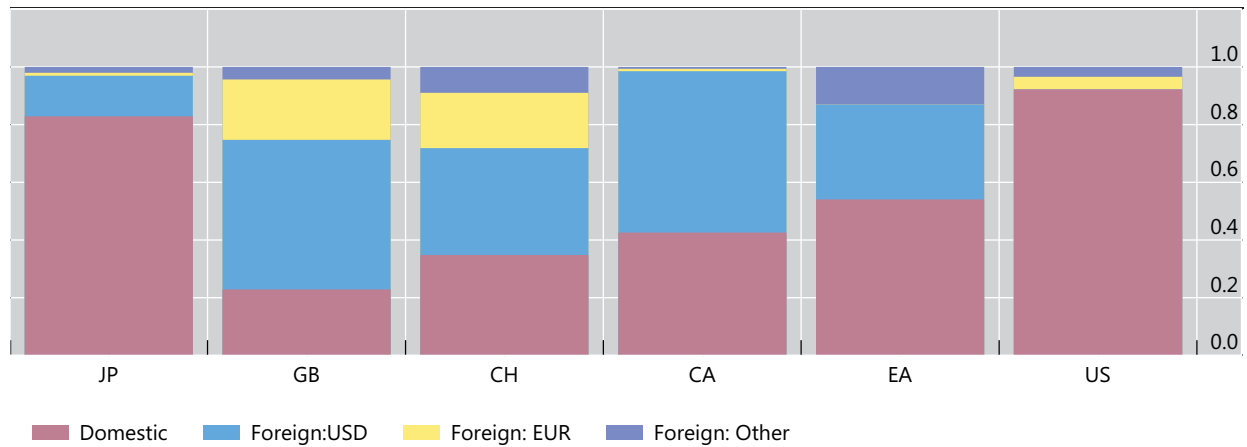
¹⁴ To measure the geographical breakdown of revenues we use external revenues, which measures revenues acquired from external customers.

¹⁵ For instance, Linde AG booked 5% of its long-term assets in Australia, and had an AUD bond outstanding.

Proportion of bonds issued in domestic/foreign currency by non-financial firms domiciled in each country or economic area

In per cent

Figure 1

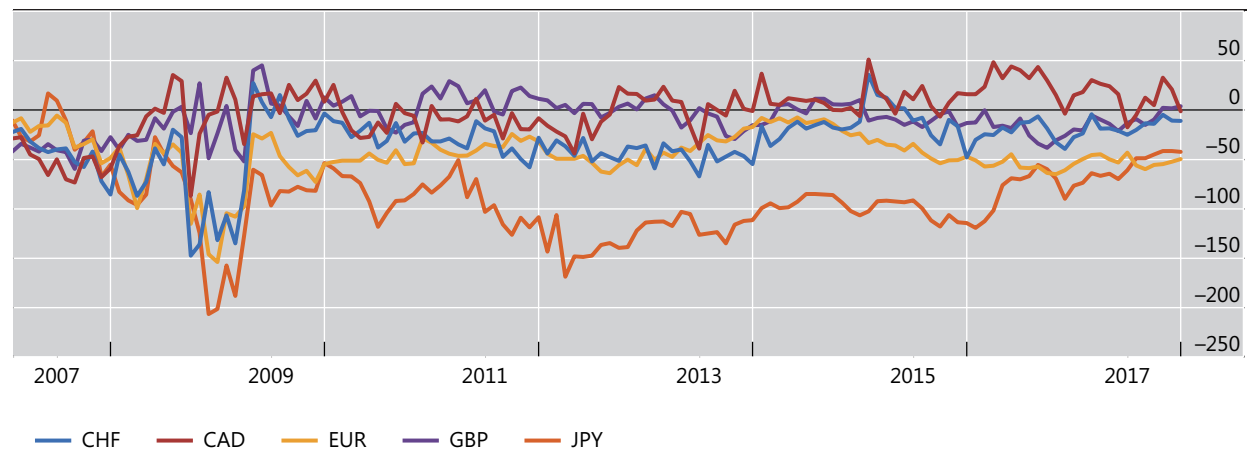


Source: Thompson Reuters Eikon

Residualized credit spreads, relative to the US dollar

In percent

Figure 2



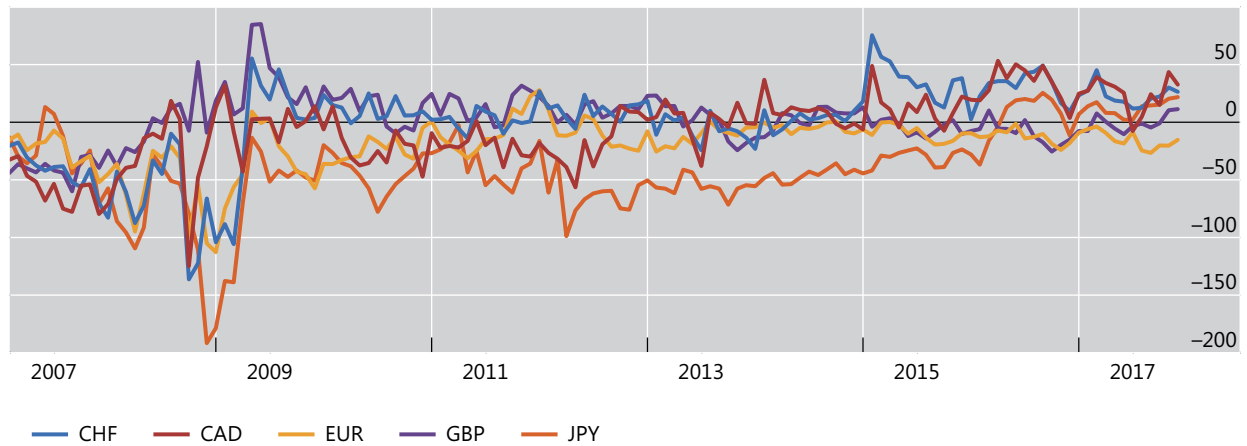
Note: Evolution of the c-USD residualized credit spread estimated from equation (1).

Source: own elaboration, Bloomberg, Thompson Reuters Eikon

Corporate basis, relative to the US dollar

In percent

Figure 3



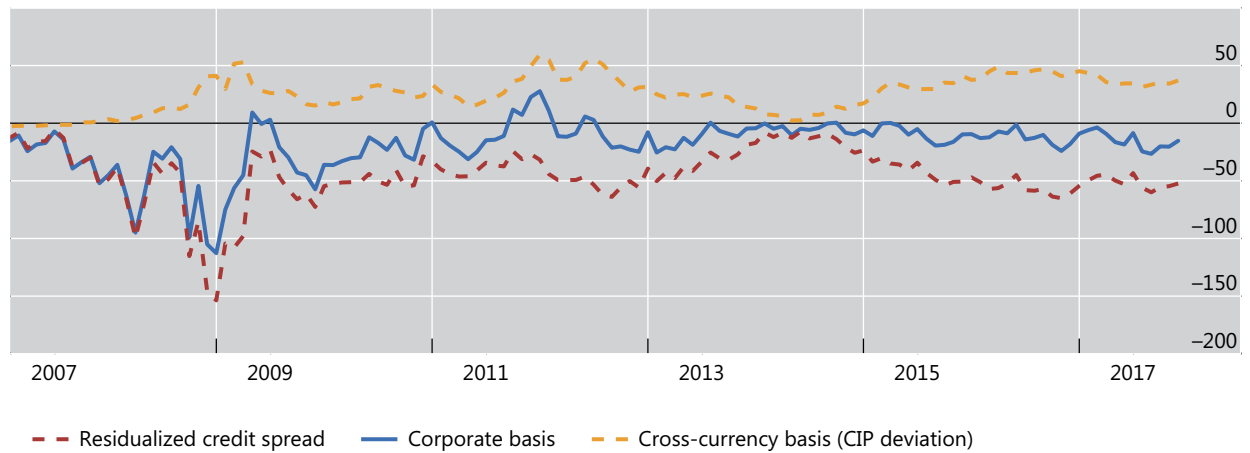
Note: Evolution of the corporate basis, obtained from equation (2). This is the difference between the CIP deviation (cross-currency basis) and the residualized credit spread obtained from equation (1)

Source: own elaboration, Bloomberg, Thompson Reuters Eikon

Corporate basis EUR, relative to the US dollar. Breakdown.

In percent

Figure 4



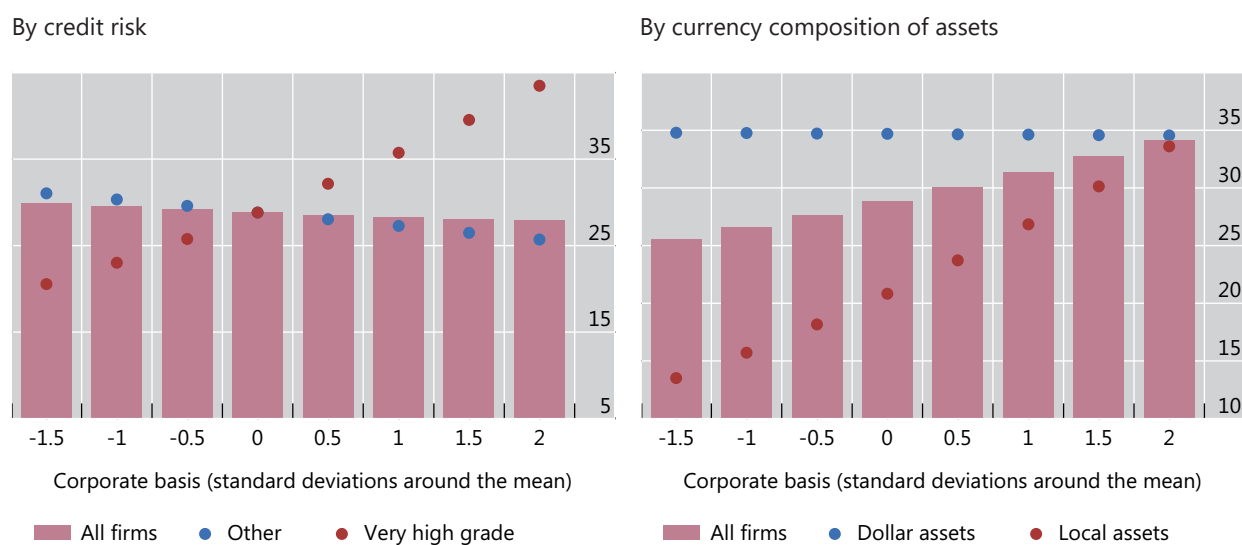
Note: Decomposition of the USD-EUR corporate basis, as the sum of the residualized credit spread (dashed red line), and the CIP deviation (cross-currency basis, dashed yellow line)

Source: own elaboration, Bloomberg, Thompson Reuters Eikon

Fraction of dollar borrowing and the corporate basis ¹

In per cent

Figure 5



¹ This figure shows the impact of the corporate basis on dollar borrowing for different types of firm, using Column (I) in Table 8. Panel A breaks them down according to their credit risk (very high-grade, vs the rest); and Panel B by the currency composition of their assets (local and dollar assets). The impact differs across the levels of the covered credit spread (standardized around its mean) reported on the horizontal axis. In Panel B firms with dollar (local) assets are those with a ratio of long-term assets to total assets at the 75th (25th) percentile.

Source: own elaboration.

Table 1. Firm-level variables

Panel A. Non-US firms

	p25	p50	p75	mean
Leverage	15%	27%	41%	27%
Price to book	1.1	1.6	2.4	2.1
Operating margin	4%	7%	13%	10%
Tangible assets ratio	32%	67%	99%	70%
Current ratio	88%	116%	148%	129%
Total Assets (in USD millions)	6,410	17,200	46,900	42,700

Panel B. Non-euro area firms

	p25	p50	p75	mean
Leverage	12%	28%	40%	24%
Price to book	1.3	2.0	3.4	3.7
Operating margin	3%	9%	16%	-50%
Tangible assets ratio	18%	47%	88%	56%
Current ratio	94%	130%	188%	182%
Total Assets (in USD millions)	3,100	9,930	30,400	30,000

Source: Thompson Reuters.

Table 2: Bond issuances by currency**Panel A. Number of bond issued, by currency**

	USD	JPY	GBP	EUR	CHF	CAD
Pre-2007	9,252	3,099	438	1,384	115	363
2007	900	346	64	161	30	43
2008	1,297	521	75	236	62	67
2009	1,183	357	81	277	42	58
2010	1,909	607	44	249	27	107
2011	1,050	324	24	146	37	67
2012	1,365	357	51	267	42	94
2013	1,364	349	34	288	23	88
2014	1,341	325	54	294	39	87
2015	1,641	360	47	388	47	76
2016	1,872	648	116	707	49	137
Total	23,174	7,293	1,028	4,397	513	1,187

Panel B. Number of local currency bond issued, by currency

	USD	JPY	GBP	EUR	CHF	CAD
Pre-2007	6,818	2,826	200	888	51	228
2007	681	322	34	87	12	17
2008	978	459	43	129	23	37
2009	918	333	50	222	29	52
2010	1,505	563	29	186	16	94
2011	853	298	11	114	23	48
2012	1,058	338	23	216	30	57
2013	1,048	340	12	211	13	60
2014	1,070	320	25	197	21	63
2015	1,362	351	18	214	20	46
2016	1,537	636	73	379	25	66
Total	17,828	6,786	518	2,843	263	768

Table 2: Bond issuances by currency (cont.)**Panel C. Number of foreign currency bond issued, by currency**

	USD	JPY	GBP	EUR	CHF	CAD
Pre-2007	2,434	273	238	496	64	135
2007	219	24	30	74	18	26
2008	319	62	32	107	39	30
2009	265	24	31	55	13	6
2010	404	44	15	63	11	13
2011	197	26	13	32	14	19
2012	307	19	28	51	12	37
2013	316	9	22	77	10	28
2014	271	5	29	97	18	24
2015	279	9	29	174	27	30
2016	335	12	43	328	24	71
Total	5,346	507	510	1,554	250	419

Table 3: Non-US firms' US dollar bond borrowing

This table shows the determinants of the fraction of dollar bond issuances to total bond issuances, which is bounded between zero and one, by non-US non-financial firms (FCR_{icrt}), at a quarterly frequency. We estimate the following equation using a GLM (Generalized Linear Model) with a logistic link function:

$$E(FCR_{icrt} | CB_{USD,t}^c, Y_{icrt-1}) = G(\alpha_c + \alpha_t + \alpha_r + \beta CB_{USD,t}^c + USD_i + \gamma W_{it-1} + \delta Z_{it-1} + \varepsilon_{icrt})$$

where $G(\cdot)$ is the logistic link function, the covered credit spread ($CB_{USD,t}^c$) is the sum of the residualized credit spread of currency c and the deviations from currency c -USD covered interest rate parity. It reflects the cost saving of a firm conducting synthetic local currency borrowing (ie, issuing a fixed-coupon bond in dollars and swapping the proceeds back into an equivalent domestic currency bond, relative to issuing a domestic currency bond). USD_i is a dummy variable that takes value 1 if the firm has long-term dollar assets or revenues, and zero otherwise. α coefficients indicate the use of currency (c), year-quarter (t), and rating category (r) fixed effects. The vector W_{it-1} represents a set of lagged firm specific control variables: price-to-book, operating margin, total assets, leverage, and previous issuance dummy, and dollar asset-side exposure. We included several economic area/country lagged specific variables (Z_{it-1}): sovereign yield differential, exchange rate volatility, public debt to GDP, current account balance to GDP, and GDP growth. All variables are standardized. Panel A reports the coefficients and Panel B the marginal effects of one-standard deviation change in the covered credit spread and the marginal effect associated with firms with dollar exposure. Column I is estimated using the whole sample (2007Q1–2016Q4), and columns II and III correspond to the results obtained with two subsamples (2007Q1–2012Q2 and 2012Q3–2016Q4, respectively). Robust standard errors in parentheses (clustered at the currency- quarter level). Both the coefficients and standard errors are reported in percentage points (i.e., they are multiplied by 100). The symbols *, ** and *** indicate significance at the 10%, 5% and 1% levels, respectively.

Dependent variable: $FCR = \text{USD Debt} / (\text{USD Debt} + \text{Local Curr Debt})$

	I 2007Q1-2016Q4	II 2007Q1-2012Q2	III 2012Q3-2016Q4
Panel A: Coefficients			
Corporate basis	0.145* (0.08)	0.042 (0.09)	0.577** (0.24)
USD asset-side exposure	0.426*** (0.10)	0.365** (0.16)	0.440*** (0.14)
PriceToBook	0.03 (0.05)	0.089 (0.06)	-0.05 (0.08)
Operating margin	0.049 (0.04)	0.075 (0.06)	0.036 (0.07)
Total assets	0.275*** (0.08)	0.207** (0.10)	0.311** (0.14)
Leverage	-0.096** (0.04)	-0.211*** (0.06)	0.019 (0.06)
Previous issuer	0.491*** (0.12)	0.512*** (0.18)	0.479*** (0.18)
Panel B: Marginal effect of			
Corporate basis	1.58* (0.88)	0.47 (1.02)	5.92** (2.46)
Observations	4,005	2,094	1,911
Firm Controls	YES	YES	YES
Country Controls	YES	YES	YES
Rating FE	YES	YES	YES
Quarter FE	YES	YES	YES
Currency FE	YES	YES	YES

Table 4. Marginal effect of the corporate basis (CB) on firms' foreign currency bond borrowing. Euro borrowing by non-Euro Area firms.

This table shows the determinants of the fraction of euro bond issuances to total bond issuances, which is bounded between zero and one, by non- Euro Area non-financial firms (FCR_{icrt}), at a quarterly frequency. We estimate the following equation using a GLM (Generalized Linear Model) with a logistic link function

$$E(FCR_{icrt}|CB_{EUR,t}^c, Y_{ict-1}) = G(\alpha_c + \alpha_t + \alpha_r + \beta CB_{EUR,t}^c + \gamma W_{it-1} + \delta Z_{it-1} + \varepsilon_{icrt})$$

where $G(\cdot)$ is the logistic link function, the corporate basis ($CB_{EUR,t}^c$) is the sum of the residualized credit spread of currency c and the deviations from currency c -EUR covered interest rate parity. It reflects the cost saving of a firm conducting synthetic local currency borrowing (ie, issuing a fixed-coupon bond in euros and swapping the proceeds back into an equivalent domestic currency bond, relative to issuing a domestic currency bond). We report only the marginal effect of one-standard deviation change in the covered credit spread on the expected value of the ratio of foreign currency borrowing. The set of control variables is the same used in Table 3 but using euros as the reference currency with the exception of the euro-asset side exposure which is not available in that currency. Column I is estimated using the whole sample (2007Q1–2016Q4), and columns II and III correspond to the results obtained with two subsamples (2007Q1–2012Q2 and 2012Q3–2016Q4, respectively). Robust standard errors in parentheses (clustered at the currency- quarter level). Both the coefficients and standards errors are reported in percentage points (i.e., they are multiplied by 100). The symbols *, ** and *** indicate significance at the 10%, 5% and 1% levels, respectively.

Dependent variable: FCR=EUR Debt / (EUR Debt + Local Curr Debt)			
	I	II	III
	2007Q1-2016Q4	2007Q1-2012Q2	2012Q3-2016Q4
Marginal effect of			
Corporate basis	1.36* (0.80)	0.24 (0.48)	3.91* (2.11)
Observations	7,468	3,872	3,596
Firm Controls	YES	YES	YES
Country Controls	YES	YES	YES
Rating FE	YES	YES	YES
Quarter FE	YES	YES	YES
Currency FE	YES	YES	YES

Table 5. Conditional marginal effects of the corporate basis (CB) on foreign currency bond borrowing depending on firms' rating

This table shows the determinants of the fraction of dollar (euro) bond issuances to total bond issuances, which is bounded between zero and one, by non-US (non-Euro Area) non-financial firms (FCR_{ict}), at a quarterly frequency. To explore if the impact of the corporate basis depends on firms' risk we modify the original equation used in Table 3 including an interaction term and estimate the following equation using a GLM (Generalized Linear Model) with a logistic link function:

$$E(FCR_{ict} | CB_{Forc,t}^c, Y_{ict-1}) = G(\alpha_c + \alpha_t + \alpha_r + \beta_1 CB_{Forc,t}^c + \beta_2 Safe_{it-1} + \beta_3 CB_{Forc,t}^c \times Safe_{it-1} + \gamma W_{it-1} + \delta Z_{it-1} + \varepsilon_{ict})$$

where $G(\cdot)$ is the logistic link function and $Safe_{it-1}$ is a dummy variable that is equal to one if the firm's rating is in the very high-grade rating category, which we define as a rating above AA-, and zero if it is a high-yield, low investment grade category or it is not rated (hereafter we refer to them as the "control group"). The corporate basis ($CB_{DomC,t}^c$) is the sum of the residualized credit spread of currency c and the deviations from currency c -USD (c -EUR) covered interest rate parity. We report only the marginal effect of one-standard deviation change in the covered credit spread on the expected value of the ratio of foreign currency borrowing for very high-grade firms (i.e., $Safe_{it-1}$ is equal to one) and the control group (i.e., $Safe_{it-1}$ is equal to zero). All models include the covariates described in Table 3. Columns I - III report the results obtained when the foreign currency is the dollar (USD) and the sample consists of non-US firms whereas columns IV and VI contain the results obtained when the foreign currency is the euro (EUR) and the sample consists of non-Euro Area firms. In columns I and IV we use the whole sample of firms whereas in columns II and V we restrict the sample to those firms with a rating. In columns III and VI, we use coarsened exact matching (CEM) techniques to balance the size of groups of very high-grade firms and the rest of firms with a rating. We use the baseline matching algorithm (Iacus, King, and Porro, 2008), and obtain weights for each observation. Then, we run weighted GLM regressions using the CEM weights. Robust standard errors in parentheses (clustered at the currency- quarter level). Both the coefficients and standards errors are reported in percentage points (i.e., they are multiplied by 100). The symbols *, ** and *** indicate significance at the 10%, 5% and 1% levels, respectively.

Dep. variable FCR:	USD/(USD+Local Curr Debt)			EUR/(EUR+LC Local Curr Debt)		
	I	II	III	IV	V	VI
Safe	5.59*** (1.65)	4.30*** (1.57)	5.85*** (2.09)	5.17* (2.99)	3.16 (3.02)	5.54 (3.75)
Rest	0.33 (0.88)	-1.59 (1.32)	3.45 (2.79)	0.64 (0.76)	-0.29 (1.03)	0.47 (1.90)
Observations	4,005	2,162	811	8,134	5,316	3,667
Firm Controls	YES	YES	YES	YES	YES	YES
Country Controls	YES	YES	YES	YES	YES	YES
Rating FE	YES	YES	YES	YES	YES	YES
Quarter FE	YES	YES	YES	YES	YES	YES
Currency FE	YES	YES	YES	YES	YES	YES

Table 6. Conditional marginal effects of the corporate basis (CB) on foreign currency bond borrowing depending on firms' risk

This table shows the determinants of the fraction of dollar bond issuances to total bond issuances, which is bounded between zero and one, by non-US non-financial firms (FCR_{ict}), at a quarterly frequency. To explore if the impact of the corporate basis depends on firms' risk we modify the original equation used in Table 3 including an interaction term and estimate the following equation using a GLM (Generalized Linear Model) with a logistic link function:

$$E(FCR_{ict} | CB_{USD,t}^c, Y_{ict-1}) = G(\alpha_c + \alpha_t + \alpha_r + \beta_1 CB_{USD,t}^c + \beta_2 Safe_{it-1} + \beta_3 CB_{USD,t}^c \times Safe_{it-1} + \delta' Y_{ict-1} + \varepsilon_{ict})$$

where $G(\cdot)$ is the logistic link function and $Safe_{it-1}$ is the measure of firms' credit risk. In column (I) we measure the firm's risk based on a dummy variable that is equal to one if the firm's rating is in the very high-grade rating category, which we define as a rating above AA-, and zero if it is a high-yield or low investment grade category (i.e., we exclude non-rated firms). In column (II) we use a risk measure based on the Altman Z-score. More specifically, we use a dummy variable that is equal to one if the firm is in the top quartile of the Z-score distribution for the firms in our sample, which means it is in the "safe" zone. In column (III) we use an alternative proxy that classifies firms as risky when the distance to default is in the bottom quartile of the distribution of distance to default measures for the firms in our sample. The corporate basis ($CB_{USD,t}^c$) is the sum of the residualized credit spread of currency c and the deviations from currency c -USD covered interest rate parity. We use coarsened exact matching (CEM) techniques to balance the size of groups of firms within the safe category and the rest of the firms. We use the baseline matching algorithm (Iacus, King, and Porro, 2008), and obtain weights for each observation. Then, we run weighted GLM regressions using the CEM weights. We report only the marginal effect of one-standard deviation change in the corporate basis on the expected value of the ratio of foreign currency borrowing for safe and riskier firms according to the definition in each column. All models include the covariates described in Table 3. Robust standard errors in parentheses (clustered at the currency- quarter level). Both the coefficients and standards errors are reported in percentage points (i.e., they are multiplied by 100). The symbols *, ** and *** indicate significance at the 10%, 5% and 1% levels, respectively.

	Rating	Z-score	Distance to default
	I	II	III
Safe	5.85*** (2.09)	3.06* (1.83)	4.32* (2.51)
Rest	3.45 (2.79)	0.39 (1.05)	0.79 (1.38)
Observations	811	3,873	2,489
Firm Controls	YES	YES	YES
Country Controls	YES	YES	YES
Rating FE	YES	YES	YES
Quarter FE	YES	YES	YES
Currency FE	YES	YES	YES

Table 7. Conditional marginal effects of the corporate basis (CB) on foreign currency bond borrowing depending on firms' dollar exposures

This table shows the determinants of the fraction of dollar bond issuances to total bond issuances, which is bounded between zero and one, by non-US non-financial firms (FCR_{icrt}), at a quarterly frequency. To explore if the impact of the corporate basis depends on firms' risk we modify the original equation used in Table 3 including an interaction term and estimate the following equation using a GLM (Generalized Linear Model) with a logistic link function:

$$E(FCR_{icrt}|CB_{USD,t}^c, Y_{irt-1}) = G(\alpha_c + \alpha_t + \alpha_r + \beta_1 CB_{USD,t}^c + \beta_2 USD_i^X + \beta_3 CB_{USD,t}^c \cdot USD_i^X + \gamma W_{it-1} + \delta Z_{it-1} + \varepsilon_{icrt})$$

where $G(\cdot)$ is the logistic link function and USD_i^X is a dummy variable that denotes the existence of dollar long-term assets and/or revenues. More specifically, in column (I) this variable equal to one when the firm has assets or revenues in USD whereas in columns (II) and (III) we split the measure in two and distinguish between both exposures such that column (II) refers to long-term assets in USD and column (III) to the existence of revenues in that currency. In columns (IV) – (VII) we use a continuous measure. Column (IV) reports the results using the continuous variable of dollar long-term assets whereas column (V) contains the results obtained when we use the orthogonalized variable (the orthogonalized measure is the residual that is obtained after regressing the continuous variable measuring dollar exposures on total assets). Columns (VI) and (VII) are analogous to the two previous columns but using the measure of dollar revenues. The corporate basis ($CCS_{USD,t}^c$) is the differential in the corporate basis of currency c in excess of the deviations from currency c -USD covered interest rate parity. In columns (I) – (III) we report only the marginal effect of one-standard deviation change in the corporate basis on the expected value of the ratio of foreign currency borrowing for firms with and without dollar exposures according to the definition in each column. The marginal effects in columns (IV) – (VII) are obtained for firms whose exposures are one standard deviation above the mean and for the rest of firms. Robust standard errors in parentheses (clustered at the currency- quarter level). Both the coefficients and standards errors are reported in percentage points (i.e., they are multiplied by 100). The symbols *, ** and *** indicate significance at the 10%, 5% and 1% levels, respectively.

	Exposure: yes/no			Exposure: continuous measure			
	I	II	III	IV	V	VI	VII
USD Asset-side exposure: NO	1.91*						
	(1.07)						
USD Asset-side exposure: YES	0.33						
	(1.01)						
USD LT assets: NO		1.72*		1.76**	2.00**		
		(0.96)		(0.86)	(0.88)		
USD LT assets: YES		-0.15		-0.09	-0.26		
		(1.21)		(1.00)	(1.03)		
USD Revenues: NO			1.76*			2.34**	2.61***
			(1.06)			(0.91)	(0.95)
USD Revenues: YES			0.39			-0.36	-0.34
			(1.02)			(1.04)	(1.04)
Observations	4,005	4,005	4,005	4,005	4,005	4,005	4,005
Firm Controls	YES	YES	YES	YES	YES	YES	YES
Country Controls	YES	YES	YES	YES	YES	YES	YES
Rating FE	YES	YES	YES	YES	YES	YES	YES
Quarter FE	YES	YES	YES	YES	YES	YES	YES
Currency FE	YES	YES	YES	YES	YES	YES	YES

Table 8. Conditional marginal effects of the corporate basis (CB) on foreign currency bond borrowing depending on firms' rating and dollar exposures

This table shows the determinants of the fraction of dollar bond issuances to total bond issuances, which is bounded between zero and one, by non-US non-financial firms (FCR_{icrt}), at a quarterly frequency. To explore if the impact of the corporate basis depends on firms' risk we modify the original equation used in Table 3 including an interaction term and estimate the following equation using a GLM (Generalized Linear Model) with a logistic link function:

$$E(FCR_{icrt} | CB_{USD,t}^c, Y_{icrt-1}) = G(\alpha_c + \alpha_t + \alpha_r + \beta_1 CB_{USD,t}^c + \beta_2 Safe_{it-1} + \beta_3 CB_{USD,t}^c x Safe_{it-1} + \beta_4 USD_i^X + \beta_5 CB_{USD,t}^c x USD_i^X + \gamma W_{it-1} + \delta Z_{it-1} + \varepsilon_{icrt})$$

where $G(\cdot)$ is the logistic link function and $Safe_{it-1}$ is a dummy variable that is equal to one if the firm's rating is in the very high-grade rating category, which we define as a rating above AA-, and zero if it is a high-yield or low investment grade category (i.e., we exclude non-rated firms). USD_i^X is a variable that measures the existence of dollar long-term assets and/or revenues. More specifically, in columns I and IV this variable is equal to the average of the (orthogonalized) ratio of dollar revenues and the (orthogonalized) ratio of long-term dollar assets. Columns II and V are obtained using the (orthogonalized) ratio of long-term dollar assets whereas columns III and VI are obtained using the (orthogonalized) ratio of dollar revenues. The corporate basis ($CB_{USD,t}^c$) is the differential in the residualized credit spread of currency c and the deviations from currency c -USD covered interest rate parity. In columns IV – VI we use coarsened exact matching (CEM) techniques to balance the size of groups of firms within the safe category and the rest of the firms. We use the baseline matching algorithm (Iacus, King, and Porro, 2008), and obtain weights for each observation. Then, we run weighted GLM regressions using the CEM weights. We report only the marginal effect of one-standard deviation change in the covered credit spread on the expected value of the ratio of foreign currency borrowing for very high-grade (i.e., $Safe_{it-1}$ is equal to one) and the rest of rated firms (i.e., $Safe_{it-1}$ is equal to zero). All models include the covariates described in Table 3. Robust standard errors in parentheses (clustered at the currency- quarter level). Both the coefficients and standard errors are reported in percentage points (i.e., they are multiplied by 100). The symbols *, ** and *** indicate significance at the 10%, 5% and 1% levels, respectively. All models include firm and country controls, and rating, quarter, and currency FE.

	Baseline			CEM		
	I	II	III	IV	V	VI
Safe	6.20*** (2.00)	6.36*** (2.01)	5.91*** (2.00)	9.20*** (2.87)	9.49*** (2.94)	9.34*** (2.86)
Rest	-1.62 (1.39)	-1.66 (1.38)	-1.52 (1.39)	4.48 (3.05)	4.33 (2.99)	5.19* (3.13)
USD Asset-side exposure: NO	4.66*** (1.51)			7.23** (2.91)		
USD Asset-side exposure: YES	-2.16 (2.22)			5.10 (3.14)		
USD LT assets: NO		4.15*** (1.48)			6.91** (2.71)	
USD LT assets: YES		-0.66 (1.85)			5.67* (2.95)	
USD Revenues: NO			4.35*** (1.49)			8.78*** (3.19)
USD Revenues: YES			1.08 (1.47)			3.23 (3.14)
Observations	2,162	2,162	2,162	811	811	811

BANCO DE ESPAÑA PUBLICATIONS

WORKING PAPERS

- 1910 JAMES COSTAIN, ANTON NAKOV and BORJA PETIT: Monetary policy implications of state-dependent prices and wages.
- 1911 JAMES CLOYNE, CLODOMIRO FERREIRA, MAREN FROEMEL and PAOLO SURICO: Monetary policy, corporate finance and investment.
- 1912 CHRISTIAN CASTRO and JORGE E. GALÁN: Drivers of productivity in the Spanish banking sector: recent evidence.
- 1913 SUSANA PÁRRAGA RODRÍGUEZ: The effects of pension-related policies on household spending.
- 1914 MÁXIMO CAMACHO, MARÍA DOLORES GADEA and ANA GÓMEZ LOSCOS: A new approach to dating the reference cycle.
- 1915 LAURA HOSPIDO, LUC LAEVEN and ANA LAMO: The gender promotion gap: evidence from Central Banking.
- 1916 PABLO AGUILAR, STEPHAN FAHR, EDDIE GERBA and SAMUEL HURTADO: Quest for robust optimal macroprudential policy.
- 1917 CARMEN BROTO and MATÍAS LAMAS: Is market liquidity less resilient after the financial crisis? Evidence for US treasuries.
- 1918 LAURA HOSPIDO and CARLOS SANZ: Gender Gaps in the Evaluation of Research: Evidence from Submissions to Economics Conferences.
- 1919 SAKI BIGIO, GALO NUÑO and JUAN PASSADORE: A framework for debt-maturity management.
- 1920 LUIS J. ÁLVAREZ, MARÍA DOLORES GADEA and ANA GÓMEZ-LOSCOS: Inflation interdependence in advanced economies.
- 1921 DIEGO BODAS, JUAN R. GARCÍA LÓPEZ, JUAN MURILLO ARIAS, MATÍAS J. PACCE, TOMASA RODRIGO LÓPEZ, JUAN DE DIOS ROMERO PALOP, PEP RUIZ DE AGUIRRE, CAMILO A. ULLOA and HERIBERT VALERO LAPAZ: Measuring retail trade using card transactional data.
- 1922 MARIO ALLOZA and CARLOS SANZ: Jobs multipliers: evidence from a large fiscal stimulus in Spain.
- 1923 KATARZYNA BUDNIK, MASSIMILIANO AFFINITO, GAIA BARBIC, SAIFFEDINE BEN HADJ, ÉDOUARD CHRÉTIEN, HANS DEWACHTER, CLARA ISABEL GONZÁLEZ, JENNY HU, LAURI JANTUNEN, RAMONA JIMBOREAN, OTSO MANNINEN, RICARDO MARTINHO, JAVIER MENCÍA, ELENA MOUSARRI, LAURYNAS NARUŠEVIČIUS, GIULIO NICOLETTI, MICHAEL O'GRADY, SELCUK OZSAHIN, ANA REGINA PEREIRA, JAIRO RIVERA-ROZO, CONSTANTINOS TRIKOUPIS, FABRIZIO VENDITTI and SOFÍA VELASCO: The benefits and costs of adjusting bank capitalisation: evidence from Euro Area countries.
- 1924 MIGUEL ALMUNIA and DAVID LÓPEZ-RODRÍGUEZ: The elasticity of taxable income in Spain: 1999-2014.
- 1925 DANILO LEIVA-LEON and LORENZO DUCTOR: Fluctuations in global macro volatility.
- 1926 JEF BOECKX, MAARTEN DOSSCHE, ALESSANDRO GALESÌ, BORIS HOFMANN and GERT PEERSMAN: Do SVARs with sign restrictions not identify unconventional monetary policy shocks?
- 1927 DANIEL DEJUÁN and JUAN S. MORA-SANGUINETTI: Quality of enforcement and investment decisions. Firm-level evidence from Spain.
- 1928 MARIO IZQUIERDO, ENRIQUE MORAL-BENITO and ELVIRA PRADES: Propagation of sector-specific shocks within Spain and other countries.
- 1929 MIGUEL CASARES, LUCA DEIDDA and JOSÉ E. GALDÓN-SÁNCHEZ: On financial frictions and firm market power.
- 1930 MICHAEL FUNKE, DANILO LEIVA-LEON and ANDREW TSANG: Mapping China's time-varying house price landscape.
- 1931 JORGE E. GALÁN and MATÍAS LAMAS: Beyond the LTV ratio: new macroprudential lessons from Spain.
- 1932 JACOPO TIMINI: Staying dry on Spanish wine: the rejection of the 1905 Spanish-Italian trade agreement.
- 1933 TERESA SASTRE and LAURA HERAS RECUERO: Domestic and foreign investment in advanced economies. The role of industry integration.
- 1934 DANILO LEIVA-LEON, JAIME MARTÍNEZ-MARTÍN and EVA ORTEGA: Exchange rate shocks and inflation comovement in the euro area.
- 1935 FEDERICO TAGLIATI: Child labor under cash and in-kind transfers: evidence from rural Mexico.
- 1936 ALBERTO FUERTES: External adjustment with a common currency: the case of the euro area.
- 1937 LAURA HERAS RECUERO and ROBERTO PASCUAL GONZÁLEZ: Economic growth, institutional quality and financial development in middle-income countries.
- 1938 SILVIA ALBRIZIO, SANGYUP CHOI, DAVIDE FURCERI and CHANSIK YOON: International Bank Lending Channel of Monetary Policy.
- 1939 MAR DELGADO-TÉLLEZ, ENRIQUE MORAL-BENITO and JAVIER J. PÉREZ: Outsourcing and public expenditure: an aggregate perspective with regional data.

- 1940 MYROSLAV PIDKUYKO: Heterogeneous spillovers of housing credit policy.
- 1941 LAURA ÁLVAREZ ROMÁN and MIGUEL GARCÍA-POSADA GÓMEZ: Modelling regional housing prices in Spain.
- 1942 STÉPHANE DÉES and ALESSANDRO GALESÌ: The Global Financial Cycle and US monetary policy in an interconnected world.
- 1943 ANDRÉS EROSA and BEATRIZ GONZÁLEZ: Taxation and the life cycle of firms.
- 1944 MARIO ALLOZA, JESÚS GONZALO and CARLOS SANZ: Dynamic effects of persistent shocks.
- 1945 PABLO DE ANDRÉS, RICARDO GIMENO and RUTH MATEOS DE CABO: The gender gap in bank credit access.
- 1946 IRMA ALONSO and LUIS MOLINA: The SHERLOC: an EWS-based index of vulnerability for emerging economies.
- 1947 GERGELY GANICS, BARBARA ROSSI and TATEVIK SEKHPOSYAN: From Fixed-event to Fixed-horizon Density Forecasts: Obtaining Measures of Multi-horizon Uncertainty from Survey Density Forecasts.
- 1948 GERGELY GANICS and FLORENS ODENDAHL: Bayesian VAR Forecasts, Survey Information and Structural Change in the Euro Area.
- 2001 JAVIER ANDRÉS, PABLO BURRIEL and WENYI SHEN: Debt sustainability and fiscal space in a heterogeneous Monetary Union: normal times vs the zero lower bound.
- 2002 JUAN S. MORA-SANGUINETTI and RICARDO PÉREZ-VALLS: ¿Cómo afecta la complejidad de la regulación a la demografía empresarial? Evidencia para España.
- 2003 ALEJANDRO BUESA, FRANCISCO JAVIER POBLACIÓN GARCÍA and JAVIER TARANCÓN: Measuring the procyclicality of impairment accounting regimes: a comparison between IFRS 9 and US GAAP.
- 2004 HENRIQUE S. BASSO and JUAN F. JIMENO: From secular stagnation to robocalypse? Implications of demographic and technological changes.
- 2005 LEONARDO GAMBACORTA, SERGIO MAYORDOMO and JOSÉ MARÍA SERENA: Dollar borrowing, firm-characteristics, and FX-hedged funding opportunities.

BANCO DE ESPAÑA
Eurosistema

Unidad de Servicios Generales I
Alcalá, 48 - 28014 Madrid
E-mail: publicaciones@bde.es
www.bde.es