

**A QUARTERLY FISCAL DATABASE
FOR THE EURO AREA BASED ON
INTRA-ANNUAL FISCAL INFORMATION**

2009

Joan Paredes, Diego J. Pedregal
and Javier J. Pérez

**Documentos de Trabajo
N.º 0935**

BANCO DE ESPAÑA
Eurosistema



**A QUARTERLY FISCAL DATABASE FOR THE EURO AREA BASED ON
INTRA-ANNUAL FISCAL INFORMATION**

A QUARTERLY FISCAL DATABASE FOR THE EURO AREA BASED ON INTRA-ANNUAL FISCAL INFORMATION (*)

Joan Paredes

EUROPEAN CENTRAL BANK

Diego J. Pedregal

UNIVERSIDAD DE CASTILLA-LA MANCHA

Javier J. Pérez

BANCO DE ESPAÑA

(*) The views expressed in this paper are those of the authors and not necessarily those of the European Central Bank or the Bank of Spain. We thank seminar participants at the European Central Bank, Jacopo Cimadomo, Todd Clark, Günter Coenen, Francisco de Castro, Daniel Garrote, Domenico Giannone, Markus Kirchner, Michele Lenza, Albert Marcet, Henri Maurer, Agustín Maravall, Ad van Riet, Matthias Trabandt, and colleagues at the ECB's Fiscal Policies Division and Government Finance Statistics Unit, for useful comments and suggestions. We also thank Lorenzo Forni, José Emilio Gumiel, Alexandru Isar, Sandro Momigliano and A. Jesús Sánchez for help with the data. Pedregal acknowledges financial support of the Spanish Education and Science Ministry under project SEJ2006-14732 (ECON). Contact details: J. Paredes (joan.paredes@ecb.europa.eu), D. J. Pedregal (diego.pedregal@uclm.es), J. J. Pérez (javierperez@bde.es, corresponding author).

The Working Paper Series seeks to disseminate original research in economics and finance. All papers have been anonymously refereed. By publishing these papers, the Banco de España aims to contribute to economic analysis and, in particular, to knowledge of the Spanish economy and its international environment.

The opinions and analyses in the Working Paper Series are the responsibility of the authors and, therefore, do not necessarily coincide with those of the Banco de España or the Eurosystem.

The Banco de España disseminates its main reports and most of its publications via the INTERNET at the following website: <http://www.bde.es>.

Reproduction for educational and non-commercial purposes is permitted provided that the source is acknowledged.

© BANCO DE ESPAÑA, Madrid, 2009

ISSN: 0213-2710 (print)

ISSN: 1579-8666 (on line)

Depósito legal: M. 1961-2010

Unidad de Publicaciones, Banco de España

Abstract

The analysis of the macroeconomic impact of fiscal policies in the euro area has been traditionally limited by the absence of quarterly fiscal data. To overcome this problem, we provide two new databases in this paper. Firstly, we construct a quarterly database of euro area fiscal variables for the period 1980-2008 for a quite disaggregated set of fiscal variables; secondly, we present a real-time fiscal database for a subset of fiscal variables, composed of bi-annual vintages of data for the euro area period (2000-2009). All models are multivariate, state-space mixed-frequencies models estimated with available national accounts fiscal data (mostly annual) and, more importantly, monthly and quarterly information taken from the cash accounts of the governments. We provide not seasonally- and seasonally-adjusted data. Focusing solely on intra-annual fiscal information for interpolation purposes allows us to capture genuine intra-annual "fiscal" dynamics in the data. Thus, we provide fiscal data that avoid some problems likely to appear in studies using fiscal time series interpolated on the basis of general macroeconomic indicators, namely the well-known decoupling of tax collection from the evolution of standard macroeconomic tax bases (revenue windfalls/shortfalls).

Keywords: Euro area; Fiscal policies; Interpolation; Unobserved Components models; Mixed-frequencies.

JEL Classification: C53; E6; H6.

1 Introduction

Macroeconomic analysis with aggregated euro area data has become a common place over the last decade.¹ This is not surprising, given that monetary policy for the European countries that have been adopting the euro currency since January 1999 is set by the European Central Bank (ECB). Therefore, the construction of historical data for the euro area has been part of the academic agenda and the agenda of the ECB over the past few years [see Beyer et al. (2001), Anderson et al. (2007) and Fagan et al. (2001 and 2005)]. Even though fiscal policy remains a national issue, interactions between monetary and fiscal policies are carefully monitored by the monetary authority [see, for example, ECB (2008 and 2009) and Duisenberg (2003)]. In particular, in circumstances like the current ones in which a number of discretionary fiscal policy packages are put forward by euro area governments, the assessment of the impact of fiscal policies on euro area GDP and prices, and the constraints fiscal policy might impose on monetary policy over the medium term is a relevant endeavour. Indeed, the issue is currently the subject of a number of academic studies [see, for example, Davig and Leeper (2009) or Cogan et al. (2009)].

The appropriate assessment of the impact of fiscal policies at the euro area wide level is restricted by the limitations of available quarterly data for the relevant fiscal variables in national accounts terms. The whole fiscal surveillance process at the European level is designed on the basis of annual data. The fact that budgetary plans are prepared following an annual budgetary cycle, typically in the framework of annual models, and the discretionary nature of many government measures set up for the entire year, have traditionally limited the interest in high-frequency fiscal data. Nevertheless, a recent strand of the literature has shown that intra-annual fiscal data, when modelled appropriately, contains extremely valuable and useful information for forecasting annual fiscal aggregates, enabling earlier detection of episodes of fiscal deterioration (or improvement) than traditional methods [Pérez (2007), Silvestrini et al. (2008), Onorante et al. (2009) and Pedregal and Pérez (2009)].

Thus, the issue addressed in this paper is the construction of a quarterly fiscal database for the euro area for the period 1980-2008, solely based on intra-annual fiscal information, on the basis of multivariate, state-space mixed-frequencies models.² The models are estimated with annual and quarterly³ national accounts fiscal data and government monthly cash accounts data.

We provide a quite disaggregated set of nominal fiscal variables for the General Government sector in ESA95 terms,⁴ seasonally and non-seasonally adjusted, in order to make the database a usable input for the estimation of macroeconomic models [like ECB's AWM or NAWM, see Fagan et al. (2001 and 2005) and Coenen et al. (2008), respectively] or for applied empirical studies. On the revenue side of government accounts the database covers total government revenue, direct taxes (with a proxy for the breakdown between direct

1. See as a few examples of a growing literature Forni et al. (2009), Ratto et al. (2009), Fagan et al. (2005), Smets and Wouters (2003), Bruneau and de Bandt (2003), Aarle et al. (2003) or Jacobs et al. (2003).

2. Along the lines of Harvey and Chung (2000), Moauro and Savio (2005), Proietti and Moauro (2006).

3. Quarterly government finance statistics for the euro area are available for the period starting in 1999Q1, in nominal, non-seasonally adjusted terms, see European Commission (2002a, 2002b, 2006). The data started to be published by the European Central Bank in August 2004 (only for the euro area aggregate, see ECB, 2004), and subsequently by Eurostat itself. For further details see European Commission (2007) and Pedregal and Pérez (2009).

4. ESA95: European System of National Accounts, see <http://circa.europa.eu/irc/dsis/nfaccount/info/data/ESA95>.

taxes paid by households and firms), social security contributions (with a proxy for the breakdown between contributions paid by employers and others), and total indirect taxes. On the expenditure side, it covers total expenditure, social payments (of which also unemployment benefits), interest payments, subsidies, government investment and government consumption. Given the relevance of the latter variable (part of the demand side of GDP), we provide the breakdown between nominal and real government consumption, the breakdown between government wage and non-wage consumption expenditure, and government employment. The net lending of the government, a key policy variable, can be computed as the difference between total revenues and total expenditures.

In addition, we also provide a real-time database for aggregated total government revenue and expenditure (and thus government net lending) for bi-annual vintages of data for the euro area period, 2000-2009 (with historical data starting in 1980 though), thus contributing to the production of real-time datasets for the euro area, a relevant issue as pointed out by Croushore and Stark (2001 and 2003).⁵ This additional database, even though being more limited in coverage than our baseline database, due to problems with data availability, is fit for the real-time analysis of fiscal policies in the euro area, an issue shown to be of relevance for the analysis of monetary policy [see Orphanides (2001) or Croushore and Evans (2006)].⁶

Our databases make use of only intra-annual fiscal information. This is a relevant point for further research devoted to the integration of interpolated intra-annual fiscal variables in more general macroeconomic studies, because it allows us to capture genuine intra-annual “fiscal” dynamics in the data. This is very important because although government revenues and expenditures (e.g. unemployment benefits) may be endogenous to GDP or any other tax base proxy (e.g. private consumption for indirect tax collection) the relationship between these variables is at most indirect and extremely difficult to estimate. The decoupling of tax collection from the evolution of macroeconomic tax bases (revenue windfalls/shortfalls) is by now a proved stylised fact.⁷ We instead use directly fiscal data for interpolation purposes, which overcomes the problem of modelling an indirect relationship which is time-varying. Indeed, intra-annual fiscal data taken from public accounts’ sources represent the most relevant piece of direct information on intra-annual fiscal developments; the quasi-accounting relationship between public accounts’ figures and national accounts’ figures has to be modelled to account for differences in cash vs accrual⁸ methodology and central vs general government data.

5. For the euro area, the Euro Area Business Cycle Network (EABCN) maintains and develops a Real Time Database (RTDB) of time series of several macroeconomic variables, based on series reported in the ECB’s Monthly Bulletins. Regarding quarterly fiscal data, the EABCN RTDB contains vintages of quarterly real government consumption and the deflator of government consumption. For details see Giannone et al. (2006) and the EABCN reserved space at <http://www.eabcn.org/data/rtdb/index.htm>.

6. For the analysis of real-time fiscal policies, using annual data and forecasts, see Cimadomo (2008).

7. See Morris et al. (2009) or Morris and Schuknecht (2007). The term revenue shortfalls (windfalls) is usually used in this literature to describe government revenues which fall short of (are in excess of) what would be expected in view of the impact of legislation changes and the actual or projected development of key macroeconomic aggregates (notably compensation of employees, operating surplus and private consumption) on which the usual cyclical adjustment of tax revenues is based. This is often caused by the fact that the actual tax base behaves differently to the macroeconomic variable used to proxy for it. For example, receipts from corporate income taxes depend, inter alia, on the extent of losses from previous periods that are carried forward and offset against current profits, which is not reflected in the evolution of the operating surplus (i.e. the National Accounts measure of profits).

8. Accrual means that flows are recorded when economic value is created, transformed or extinguished. For example, in an income tax collection, employees pay within a calendar year a proxy of their final income tax obligation. This amount is adjusted by the government before the end of the following year. Cash would only take into account the received amounts within the calendar year. Accrual will also take into account posterior readjustments.

Existing databases that contain quarterly fiscal variables for the euro area are the AWM database⁹ initially developed by Fagan et al. (2001 and 2005), and the recent dataset that accompanies the DSGE model by Forni et al. (2009). The interpolated annual fiscal variables in these two datasets were mainly constructed using as main ingredients GDP and other macroeconomic indicators. While this approach might be valid in certain circumstances on the grounds of economic model consistency, it is also true that both datasets are affected by the serious critiques laid out in the previous paragraph.

Turning to a deeper description of the merits of our database, as mentioned above, we provide seasonally and non-seasonally adjusted series, which are consistently and jointly estimated within our models. The issue of seasonal adjustment of quarterly fiscal variables in Europe is an important one, as signalled in European Commission (2007). Currently, available quarterly ESA95 official figures are presented only in non-seasonally adjusted terms, given the short time span available (the starting period is 1999Q1), what makes difficult the economic analysis with those figures. Indeed, adjusting in a robust way for seasonality such short time series is a difficult endeavour. In this sense, given that we use a broad set of information and model explicitly seasonality for the whole set of series included in our models, for the period 1980Q1-2008Q4, we are in a position to provide, in particular, seasonally adjusted series computed in a robust way for the period for which the official statistics are available (1999Q1 onwards).¹⁰

The approach followed in this paper is an indicator-based one. This means that we do not aggregate data of the individual euro area member states as such. Instead, we use aggregated annual data as provided by the European Commission and (when available) quarterly euro area data by Eurostat as anchors for the interpolation,¹¹ while at the same time we set up statistical models that incorporate ingredients that closely resemble those used to compile available quarterly government finance statistics data by Eurostat, for the biggest euro area economies, namely Germany, France, Italy, Spain and the Netherlands. We do so for several reasons. Firstly, to maximize data availability, and in particular, the length of the available series; an aggregation-based approach would have blocked many time series, and seriously limited the length of the feasible ones. In this respect it is worth mentioning that all the ingredients of the dataset are publicly available, i.e. we made no use of restricted or private information. Secondly, to avoid the controversial issues of weighting schemes, as discussed in Beyer et al. (2001), Bosker (2006), Brüggemann and Lütkepohl (2006) or Anderson et al. (2007). Thirdly, to overcome the impossibility of following an accounting approach like the one used by statistical agencies, not feasible for the sample period chosen and given the limited information available. Nonetheless, as regards the latter point, we tried to follow to the extent possible the principles outlined in European Commission (2002a, 2002b and 2006) as regards the compilation of government finance statistics: use of direct information from basic sources (public accounts' data), computation of "best estimates", consistency of quarterly and annual data.

9. See <http://www.eabcn.org/data/awm/index.htm>.

10. The main aim of our paper is to provide interpolated, raw (non-seasonally adjusted) fiscal data. Given that the type of models that we use encompasses the estimation of a seasonal component, we also provide model-consistent, seasonally-adjusted series. Nevertheless, seasonal adjustment is not a key issue of our paper. In this respect, some empirical applications making use of our data, like those that may incorporate seasonally-adjusted macroeconomic data (by some standard method like TRAMO/SEATS, see for example Gómez and Maravall, 1996) may call for the seasonal adjustment of our raw data with methods that are comparable to those applied to the other variables incorporated in the analysis.

11. The euro area definition we use comprises the following countries: Belgium, Germany, Ireland, Greece, Spain, France, Italy, Luxembourg, Netherlands, Austria, Portugal and Finland.

The rest of the paper is organised as follows. Section 2 describes the input data used and discuss general statistical issues. Section 3 describes our methodological approach. Section 4 describes the construction of the quarterly fiscal database, including a comparison with alternative datasets and shows some stylised facts of the data. Section 4 also presents a methodological discussion of interpolation alternatives, as regards the use of smoothed vs. filtered series. Section 5, in turn, presents and discusses the real-time fiscal database. Finally, Section 6 concludes.

2 The data

2.1 Input data

As mentioned in the Introduction, the approach followed in this paper is an approach based on the use of indicators. This means that we do not aggregate data of the individual euro area member states as such to compute a euro area aggregate. Instead, we use ESA95 euro area data at the lower frequencies (annual, quarterly) and interpolate the missing values at the higher frequency (quarterly, monthly) using fiscal variables from the public accounts, available at that latter frequency.

The euro area definition we use comprises the following countries: Belgium, Germany, Ireland, Greece, Spain, France, Italy, Luxembourg, Netherlands, Austria, Portugal and Finland. The bulk of the annual euro area data in ESA95 terms for the period 1991-2008 is taken from AMECO, the database of the Directorate-General for Economic and Financial Affairs of the European Commission.¹² There are two exceptions to this source: the series for annual euro area direct taxes on corporations for the period 1980-2008 was obtained from the OECD Economic Outlook database, while the series for employers' social contributions (for the period 1991-2008) was taken from Eurostat's ESA95 database.

For the prior period 1980-1990, we had to account for the presence of a break in accounting standards (ESA79 to ESA95) and the German unification. In order to obtain homogeneous levels for the whole period 1980-2008, we removed level discontinuities by applying backwards the growth rates of the series in ESA79 terms (that exclude East Germany) to the levels of the ESA95 series. Quarterly figures for the euro area aggregate for the period 1999Q1-2008Q4 are taken from Eurostat, and are only available non-seasonally adjusted.¹³ The impact of one-off proceeds from the allocation of mobile licenses (UMTS) that sizeably distort some years was removed from the relevant series.

Quarterly and monthly fiscal variables (indicators) for the biggest euro area economies, namely Germany, France, Italy, Spain and the Netherlands, are taken from Eurostat (available ESA95 series), several national sources, the Bank of International Settlements (BIS), and other sources, as described in Table 1. When necessary, country variables are set into euros using the official fixed euro conversion rates. Also, when necessary, German series were corrected for the impact of the Unification, as explained in the previous paragraph. For additional details on some data sources of monthly/quarterly "indicator" series, the interested reader can also consult Onorante et al. (2009). Finally, annual information in ESA79/ESA95 definitions for the countries is taken from the AMECO database when needed, and quarterly information following ESA95 standards from Eurostat, as mentioned above for the euro area aggregate.

2.2 Statistical issues

As stated above, Eurostat, on the basis of data provided by EU National Statistical Institutes, provides quarterly non-financial government data for the euro area for the period starting in 1999Q1. The compilation practices follow the guidelines of the manual on quarterly non-financial accounts for general government [see European Commission (2006)]. Using the latter accounting approach to extend back in the past existing euro area fiscal time series is

¹². Available at http://ec.europa.eu/economy_finance/db_indicators/db_indicators8646_en.htm.

¹³. At http://epp.eurostat.ec.europa.eu/portal/page/portal/government_finance_statistics/data/database.

not a feasible endeavour, given the limited information available. That is why we chose in this paper an econometric approach rather than an accounting approach. Nevertheless, we tried to follow to the extent possible some of the principles outlined in the manual on quarterly non-financial accounts for general government: use of direct information from basic sources (public accounts' data), computation of "best estimates", and consistency of quarterly and annual data.

In this respect, we chose intra-annual data from the public accounts of the individual countries, along the lines of the statement of the manual that quarterly data shall be based on direct information available from basic sources, such as for example public accounts or administrative sources.

More importantly, the manual exposes that the quarterly data and the corresponding annual data have to be consistent, a constraint that our database fulfils. As regards the coherence of quarterly data with annual rules, the discussion in European Commission (2002a, 2002b and 2006) shows that there is some room for econometric estimation of intra annual fiscal variables. This is the case for two main reasons, highlighted in the previous references. Firstly, ESA95 does not consider the quarterly aspects of taxes and social payments with sufficient precision to ensure clarity of interpretation in all situations; this is because, when discussing non-financial accounts, the ESA95 guiding documents occasionally take a perspective which assumes an annual reference period is in mind, thus remaining silent on which quarter within a particular annual reference period is involved. Secondly, it is also the case that many accounting or legal events are annual events by definition (e.g. a tax levied in a complete year); this fact does not present a problem for the statistician compiling annual data (there is no need to establish the amount and time of recording to a particular annual reference period), but do pose problems for the compiler of quarterly data, that needs to attribute revenue and expenditure not merely to a reference year but also to quarters within that year.

3 The models

3.1 General setup

The basic model is of the Unobserved Component Model class known as the Basic Structural Model [Harvey (1989)], that decomposes a set of time series in unobserved though meaningful components from an economic point of view (mainly trend, seasonal and irregular). The exposition in this subsection follows closely Harvey (1989) and Pedregal and Young (2002).

The model is multivariate, and may be written as equation (1), where t is a time sub-index measured in months (for models set up at the monthly frequency),

$$\begin{bmatrix} z_t \\ \mathbf{u}_t \end{bmatrix} = \mathbf{T}_t + \mathbf{S}_t + \mathbf{e}_t \quad (1)$$

$[z_t, \mathbf{u}_t]^\top$, \mathbf{T}_t , \mathbf{S}_t and \mathbf{e}_t denote the m dimensional output time series (broken down into a scalar output, z_t , and indicators, \mathbf{u}_t), trend, seasonal and irregular components, respectively. Equation (1) is in fact a set of observation equations in a State Space system, which has to be completed by the standard transition or state equations. The state equations qualify the dynamic behaviour of the components, and a full model may be built by block concatenation of the individual components. The transition equations for models of the trend and seasonal components are a Local Linear Trend and the Trigonometric Seasonal in equation (2), where \mathbf{D}_t and \mathbf{S}_i' are additional states necessary to define the components; \mathbf{I} and $\mathbf{0}$ are the identity matrix and a square block of zeros of dimension m ; \mathbf{w}_j and \mathbf{w}_j' ($j=0, 1, \dots, 6$) are multivariate Gaussian white noises serially independent and independent of each other; and ω_i ($j=0, 1, \dots, 6$) are the fundamental frequency of the seasonal component and its harmonics.

$$\left\{ \begin{array}{l} \text{Trend :} \\ \text{Seasonal :} \end{array} \right. \quad \begin{array}{l} \begin{pmatrix} \mathbf{T} \\ \mathbf{D} \end{pmatrix}_t = \begin{pmatrix} \mathbf{I} & \mathbf{I} \\ \mathbf{0} & \mathbf{I} \end{pmatrix} \begin{pmatrix} \mathbf{T} \\ \mathbf{D} \end{pmatrix}_{t-1} + \begin{pmatrix} \mathbf{I} & \mathbf{0} \\ \mathbf{0} & \mathbf{I} \end{pmatrix} \begin{pmatrix} \mathbf{w}_0 \\ \mathbf{w}'_0 \end{pmatrix}_t \\ \mathbf{S}_t = \sum_{i=1}^6 \mathbf{S}_i ; \quad i = 1, 2, \dots, 6 \\ \begin{pmatrix} \mathbf{S}_i \\ \mathbf{S}_i' \end{pmatrix}_t = \begin{pmatrix} \cos \omega_i \mathbf{I} & \sin \omega_i \mathbf{I} \\ -\sin \omega_i \mathbf{I} & \cos \omega_i \mathbf{I} \end{pmatrix} \begin{pmatrix} \mathbf{S}_i \\ \mathbf{S}_i' \end{pmatrix}_{t-1} + \begin{pmatrix} \mathbf{I} & \mathbf{0} \\ \mathbf{0} & \mathbf{I} \end{pmatrix} \begin{pmatrix} \mathbf{w}_i \\ \mathbf{w}'_i \end{pmatrix}_t, \quad \omega_i = \frac{2\pi i}{12} \end{array} \quad (2)$$

A full BSM model may be written in compact form as a composite of a set of Transition and Observation Equations, like equation (3) written in compact form [see details in Harvey (1989)],

$$\left\{ \begin{array}{l} \mathbf{x}_t = \Phi \mathbf{x}_{t-1} + E \mathbf{w}_t : \quad \text{Transition Equations} \\ \left[\begin{array}{c} \mathbf{z}_t \\ \mathbf{u}_t \end{array} \right] = \left[\begin{array}{c} \mathbf{H} \\ \mathbf{H}^u \end{array} \right] \mathbf{x}_t + \left[\begin{array}{c} \boldsymbol{\varepsilon}_t \\ \mathbf{v}_t \end{array} \right] : \quad \text{Observation Equations} \end{array} \right. \quad (3)$$

where $\mathbf{w}_t \sim N(\mathbf{0}, \boldsymbol{\Sigma}_w)$, $\boldsymbol{\varepsilon}_t \sim N(\mathbf{0}, \boldsymbol{\Sigma}_\varepsilon)$ and $\mathbf{v}_t \sim N(\mathbf{0}, \boldsymbol{\Sigma}_v)$. \mathbf{x}_t is the concatenation of the trend components \mathbf{T}_t and seasonal components \mathbf{S}_{it} ($i=1, 2, \dots, 6$). The general consensus in this type of multivariate models in order to enable the identifiability is to build SUTSE models (Seemingly Unrelated Structural Time Series). This means that components of the same type interact among them for different time series, but are independent of any of the components of different types. In addition, relations are only allowed through the covariance structure of the vector noises \mathbf{v}_t and $\boldsymbol{\varepsilon}_t$, but never through the system matrices directly. This allows that, trends of different time series may relate to each other, but all of them are independent of both the seasonal and irregular components.

Given the structure of system (2) and the information available, the Kalman Filter and Fixed Interval Smoother algorithms provide an optimal estimation of states \mathbf{x}_t . Maximum likelihood in the time domain provides optimal estimates of the unknown system matrices, which in the present context are just covariance matrices of all the vector noises involved in the model.

3.2 Temporal aggregation

The mixture of frequencies, and the estimation of models at the quarterly frequency, implies combining variables that at the quarterly frequency can be considered as stocks with those being pure flows. An annual ESA95 series cast into the quarterly frequency is a set of missing observations for the first three quarters of the year and the observed value assigned to the last month of each year. Theoretically the annual ESA95 series would be obtained from a quarterly ESA95 series by summation of the 4 quarters of a year (Q1 to Q4) had them been available.

In the same fashion, for monthly models a quarterly ESA95 series cast at the monthly frequency encompasses missing observations for the first and the second month of each quarter, while the quarterly observation would be assigned to the last month of each quarter. Notionally, the quarterly ESA95 series would be obtained from a monthly ESA95 series by summation of the 3 months of each quarter had them been available. Likewise, an annual ESA95 series cast into the monthly frequency is a set of missing observations for the first months of the year (January to November) and the observed value assigned to the last month of each year (December). The annual ESA95 series would be obtained from a monthly ESA95 series by summation of the 12 months of a year (January to December) had them been available.

In order to set up a model in which temporal aggregation is taken into account explicitly, an accumulator variable has to be defined, as follows

$$C_t = \begin{cases} 0, & t = \text{every January (monthly data) / first quarter (quarterly data)} \\ 1, & \text{otherwise} \end{cases} \quad (4)$$

System (3) is exactly equivalent to a model in which the state vector is extended to include the output variables and the vector of transition noises is also extended with the corresponding observed noises. Then, adding equation (4) to the so extended system and re-arranging, leads to the following model

$$\begin{aligned} \begin{bmatrix} z_t \\ x_t \end{bmatrix} &= \begin{bmatrix} C_t \otimes I & H\Phi \\ 0 & \Phi \end{bmatrix} \begin{bmatrix} z_{t-1} \\ x_{t-1} \end{bmatrix} + \begin{bmatrix} 1 & H \\ 0 & E \end{bmatrix} \begin{bmatrix} \varepsilon_t \\ w_t \end{bmatrix} \\ \begin{bmatrix} z_t \\ u_t \end{bmatrix} &= \begin{bmatrix} I & 0 \\ 0 & H^u \end{bmatrix} \begin{bmatrix} z_t \\ x_t \end{bmatrix} + \begin{bmatrix} 0 \\ I \end{bmatrix} v_t \end{aligned} \tag{5}$$

It is worth noticing that model (5) has one time varying system matrix due to the introduction of the accumulator variable. Given model (5), the estimation problem consists of finding the optimal estimates of the mean and covariance of the state vector, conditional to all the data in the sample. The widespread general tools to perform this operation in a State Space framework are the Kalman Filter [Kalman (1960) and Kalman and Bucy (1961)] and the Fixed Interval Smoothing [FIS, Bryson and Ho (1969)] algorithms. The KF algorithm runs forward and yields a *filtered* estimate of the state vector at every sample t , based on the time series data up to sample t . The FIS algorithm runs backwards and produces a *smoothed* estimate of the states which, at every sample t , is based on all samples of the data. This means that, as more information is used in the later estimate, its Mean Square Error cannot be greater than the former.

The use of models of type (5) and the estimation procedures described in the previous paragraph, allows the estimation of models with unbalanced data sets, i.e. components of the matrix $\{u_t\}$ with different sample lengths. This is a feature of relevance for the construction of the database at hand, given occasional differences in temporal coverage of country indicators.

3.3 Interpolation: smoothing vs filtering?

It is well known that the FIS and KF algorithms allow inherently for a number of useful operations, being interpolation, the most important in the present context. If missing data anywhere within the data set are detected, then the filtering and smoothing algorithms simply replace the missing samples by their expectations, based on the State Space model and the data.

The empirical application in our paper concerns fiscal variables that incorporate a number of discretionary fiscal policy events. One may claim that using the FIS algorithm for interpolation may lead to the allocation of part of the future impact of a given policy measure to the present given that the FIS algorithm uses information from $t+1$ onwards for interpolation at time t . We do not think this critique is relevant for the aims of this paper, provided interpolation is understood as the reconstruction of missing values as close as possible to what they would have been in case the data were known.

The FIS algorithm may be seen as a sophisticated centred moving average, with weights time varying depending on the model and on time t . In other words, in general, the smoothed (interpolated) components of a UC model would imply using information from

the past, but also from the future for state estimation at each time t . However, as the extant literature clearly shows,¹⁴ the use of all the information of the sample is the optimal way to proceed in order to find the optimal estimation of a missing value. Even when just the KF is used, the normal procedure is to use future information implicitly by estimation of the parameters of the model with the full dataset. Interpolating a time series by *nowcasting* or *true forecasting* (i.e. using parameter estimates up to the moment when the interpolation is required) is clearly sub-optimal and may contradict the meaning of interpolation, in the sense that there is information useful for the missing value estimation that is not used. The FIS algorithm helps unveiling much better the data generating process of the time series of interest. In Appendix A we perform some simulations that reinforce this latter point.

Another essential advantage of the smoothed estimates in the present context is that they fulfil exactly the time aggregation constraints imposed on model (5), i.e. due to such constraints, the smoothed intra annual interpolates add up exactly to the available annual (quarterly) figure and the uncertainty when any data point is known is strictly zero. The KF would not produce such exact results, apart that the uncertainty around any estimate would be much greater.

For the reasons stated above we will favour the series produced with the FIS algorithm, and focus on the latter in the presentation of the database in the next Section. Nevertheless, as a check and for user convenience, we also provide the whole database interpolated using the KF algorithm in the companion database to this paper (see Appendix C for a description).

3.4 The models for the euro area aggregates

For each specific variable considered in this study, models of type (5) are estimated. In each model, the variable $\{z_t\}$ corresponds to the target time series to be interpolated, composed of annual observations for the period 1980-1998, and quarterly observations for the period 1999-2008. The vector of indicator variables $\{u_t\}$, in turn, comprises a set of variables with monthly (for monthly models) or quarterly (for quarterly models) observations, typically (but not always) available for the full period 1980-2008.

Without loss of generality, and for homogeneity reasons related to the availability of indicators, all the variables of the quarterly fiscal database will be interpolated using models of type (5) set up at the quarterly frequency, while the variables of the real-time database will be interpolated by means of models of type (5) set up at the monthly frequency.

Estimation of model (5) provides estimates for the missing values in $\{z_t\}$ (missing quarterly/monthly data points) and estimates of \mathbf{x}_t : the vector comprising the unobserved components that include the estimated seasonal components, as defined in equation (2). Thus, it is possible to compute model-consistent seasonally-adjusted interpolated series for the target variables $\{z_t\}$ just by subtraction of the correspondingly estimated seasonal components in \mathbf{x}_t from $\{z_t\}$.

¹⁴ Despite the generality and advantages of the KF and FIS algorithms, there are other alternative algorithms for the estimation of the state vector, most of them equivalent [see e.g. Young and Pedregal (1999)]. That is the case of the Bayesian algorithm that takes advantage of a nice interpretation of the KF and FIS recursive algorithms in terms of Bayes theory [West and Harrison (1989)]; the Wiener-Kolmogorov-Whittle classical filter, still used by some approaches to signal extraction [e.g. Gómez and Maravall (1998)]; and some deterministic optimisation methods proposed for signal extraction [see Pedregal and Young (2002) and references therein].

4 Construction of a historical fiscal database

The structure of the database and naming conventions are displayed in Table 2. The variables contained in the quarterly fiscal database are the following. On the revenue side of government accounts, the database includes total government revenue, direct taxes, social security contributions, and total indirect taxes. On the expenditure side, it incorporates total expenditure, social payments, unemployment benefits, interest payments, subsidies, government investment and government consumption, the latter in nominal and real terms, a government wage consumption expenditure, government employment, and purchases of goods and services. The net lending of the government, a key policy variable, can be computed as the difference between total revenues and total expenditures.

For all euro area models —equation (5)— the vector $\{z_t\}$ encompasses annual ESA95 euro area data for the period 1980-1998, and quarterly, non-seasonally adjusted, ESA95 data for the period 1999Q1-2008Q4, taken from the sources described in Section 2 as available in April 2009. On the other hand, as it is clear from the description of data sources in Table 1, in some instances it was necessary to use more than one source of intra-annual information in order to compute the indicator variable finally included in the euro area model within the vector $\{u_t\}$. In Appendix B we provide a quite detailed description of the implementation of the general methodology and the data inputs described in the case of each one of the variables included in our study, and also the description of the components of $\{u_t\}$ in each case.

A final remark on the dimensionality of the models is worth mentioning. In order to reduce the dimensionality of our models and somewhat avoid the “curse of dimensionality” we opted for variable-by-variable models. By this we mean that, in all cases, $\{z_t\}$ encompasses just one time series (annual/quarterly), and $\{u_t\}$ the set of indicators corresponding to the latter variable, with a maximum of five indicators (one per country for each variable). The alternative would have been to run models in which $\{z_t\}$ would have included several variables, and thus $\{u_t\}$ would have been a matrix with indicators by blocks for each component of $\{z_t\}$. Examples of other suitable models include a joint model for TOR and TOE, as in Pedregal and Pérez (2009), i.e. $\{z_t\} = \{\text{TOR}, \text{TOE}\}$, a joint model for the revenue side of the governments accounts, i.e. $\{z_t\} = \{\text{TOR}, \text{DTX}, \text{SCT}, \text{TIN}, \text{OTOR}\}$, or a joint model for the expenditure side, i.e. $\{z_t\} = \{\text{TOE}, \text{THN}, \text{GCN}, \text{GIN}, \text{INP}, \text{SIN}, \text{OTOE}\}$. We preferred to use for interpolation purposes more parsimonious models, and thus disregarded the alternative approach, quite valid in different frameworks (like forecasting).

4.1 A first look at the database

Figure 1 presents, as a first illustration of the database, some details on total revenue and total expenditure. The first two figures in each panel show the smoothed and filtered estimates, not seasonally-adjusted, and the 95% confidence bands around the estimates. The seasonally-adjusted counterparts are also displayed in the first two figures of each panel. The lower part of each panel compares visually the shape of the smoothed and the filtered estimates of the seasonally-adjusted series (levels and quarter-on-quarter growth rates). Some points are worth highlighting. Firstly, the smoothed estimates of TOR and TOE are estimated with high accuracy; this is apparent from the reduced confidence bands in both cases, which converge to zero as 1999Q1 is reached (first year of actual data). As expected, this is not the case for the filtered estimates; in fact, the confidence bands for the period

1980Q1-1999Q4 are not shown in the corresponding figures because the variance is extremely high. Nevertheless, after some 8-10 observations the filtered estimates get stabilised around a mean value. Secondly, the seasonal profile estimated in both cases differs markedly in the pre-1999 period; this is normal, taking into account that, in the case of the filtered estimate, the information regarding the seasonal profile pertains to the latter part of the sample, and the KF only internalises the future information implicitly by estimation of the parameters of the model with the full dataset. Thirdly, the latter difference almost vanishes when the seasonal component is netted-out and the seasonally-adjusted series computed with the FIS and the KF are pictured together; nevertheless, as it is apparent from the presented growth rates, the filtered series are more volatile.

Figures 2, 3 and 4 present quarter-on-quarter growth rates of all the variables (seasonally-adjusted) included in the database. Figure 2 shows total government revenue and its components, Figure 3 total government expenditure and its main components, and Figure 4 the decomposition of government consumption.

As regards the information displayed in Figure 2, the growth rates of direct taxes displays much more volatility than the aggregate of total revenues (2.4% relative standard deviation), while social contributions and indirect taxes present a volatility similar to that of TOR (1.2% and 1.0% relative standard deviation). The relative volatility displayed by quarterly data is similar to that present in annual data. DTX, SCT and TIN present similar shares (in 2008) of total revenue in the euro area: 27%, 34% and 29% of the total respectively, while the rest is accounted for by other government revenues (the dynamics of which are displayed in the latest chart of the figure).

In Figure 3 we show total expenditure and its components. Government consumption (GCN) and transfers to households (THN) represent the bulk of TOE, with shares (in 2008) of 43% and 34% respectively; the ratio of the standard deviation of GCN and THN with the standard deviation of TOE is 1.2 and 1.0 respectively. The smaller components, in turn, present much higher relative volatility with respect to the aggregate, of 4.3 for GIN (5% weight), 3.3 for INP (6% weight), and, particularly, of 9 for OTOE (computed as a residual and amounts to some 8% of TOE). SIN, in turn, is a small item amounting to some 3% of TOE, and with a relative standard deviation that doubles that of TOE. We also show in the figure unemployment benefits, UNB, a subcomponent amounting to some 8% of THN, and some 4 times more volatile than it.

Within government consumption, as shown in Figure 4, non-wage consumption expenditure (OGCN) is more volatile than wage expenditure (COE), 1.8 and 0.9 in terms of relative standard deviations to GCN respectively, while both amount to some 50% of GCN.

4.2 Basic dynamic properties of the database and comparison with existing alternatives

To highlight the properties of the database constructed in our paper [PPP2009 henceforth], in this section we will discuss some of its dynamic properties in the framework of the two main existing alternative datasets that comprise historical quarterly fiscal data: the AWM database, initially developed by Fagan et al. (2001 and 2005),¹⁵ and the dataset that accompanies the DSGE model by Forni et al. (2009).¹⁶ It is worth highlighting that we do not aim at making a

15. We thank José Emilio Gumiel for providing us with the different vintages of the AWM database.

16. We thank Lorenzo Forni for providing us with the variables of FMS2009 shown in this section.

systematic comparison of the alternative datasets but just to exemplify the existence of differences in the datasets.

As discussed above, the AWM database covers a wide range of quarterly euro area macroeconomic time-series. The latest update of the database covers the period 1970Q1-2008Q4 for most variables. The AWM database is quite thorough in the construction of quarterly historical macroeconomic data as regards aggregation practices, consistency with sources of quarterly data (mainly Eurostat) and other relevant issues. The AWM database provides also a wide array of quarterly fiscal variables. Nevertheless, fiscal variables, not being part of the core of variables provided in this source, were constructed following a different approach. In particular, annual fiscal variables as a ratio to nominal GDP are interpolated using either mechanical interpolation approaches or quarterly macroeconomic indicators (like, for example, private consumption for GDP). The AWM dataset has a history of vintages, as new member states have joined the euro area over the last few years, and also because some improvements/additions have been incorporated: we will use in this section the latest available version (AWM2008) as well as, occasionally, the two previous versions (AWM2007, AWM2005).

As regards the database of Forni et al. (2009) [FMS2009 henceforth], it encompasses the main fiscal variables typically needed in a small-scale macroeconomic model, but it is much more limited in the number of variables covered than the AWM and PPP2009 datasets. As in the case of the AWM, annual fiscal variables are mostly interpolated on the basis of quarterly macroeconomic indicators (see their quite detailed Appendix B).

Figure 5 presents a visual comparison of the levels (not seasonally-adjusted series) and growth rates (seasonally-adjusted series) of TOR, TOE (not available for FMS2009), GCR and THN.¹⁷ Differences in the levels of the selected variables (shown as percentage differences with respect to PPP2009) are apparent from the left-hand-side panels of Figure 5, especially for the period prior to 1997. Part of these differences are due to the different definition of the euro area used (euro area 16 in AWM2008, euro area 12 in PPP2009, and so on, that can be easily account for by re-scaling), while the most important part might be due to the fact that the successive vintages of the AWM database keep data prior to 1996 as frozen, and update the new levels using growth rates (as clear from the right-hand panels of Figure 5). Some differences are thus, observable, between the levels of the different versions of the AWM database.

A comparison of quarter-on-quarter growth rates of seasonally-adjusted series is shown in the right-hand panels of Figure 5, where absolute differences in the growth rates with respect to PPP2009 are shown. Two issues are worth highlighting. Firstly, as it could be expected, growth rates of AWM vintages prior to 1996 are identical in the case of TOR, TOE and GCR. Secondly, in general quarterly absolute differences are contained between ± 1 percentage points, while on average report similar values (differences are centred around zero).

17. TOR and THN in FMS2009 are presented in real terms; we translated them to nominal values using the GDP deflator included in the AWM database (2008 version). AWM fiscal variables are presented as a % of nominal GDP; thus, the levels of fiscal variables are recovered by multiplying fiscal variables as a % of GDP times nominal (SA) GDP. THN in the AWM database is not the same as PPP2009 and FMS2009 as it comprises, on top of the ESA95 concept D62, D75 to non-profit units. GCR in FMS2009 is in line with AWM ([see Appendix B in Forni et al. (2009)].

The information shown in Table 3 complements the visual inspection discussed in the previous paragraphs. In Table 3 we show simple correlation coefficients between quarter-on-quarter growth rates of seasonally-adjusted series for the period in which all databases overlap (1980Q1-2005Q4). The correlation of PPP2009 with AWM2008 and FMS is above 0.7 in all the cases, and ranges from 0.74 in the case of TOR (AWM2008) to 0.90 in the case of THN (FMS2009). In the same fashion, the correlation of FMS2009 with AWM2008 is above 0.7 in the case of GCR (by construction) and THN, while it is somewhat lower (0.64) in the case of TOR; in fact, in the latter case, the correlations of PPP2009 and FMS2009 with AWM datasets are maximised for the AWM2005 vintage.

Thus, when considering the previous basic, correlation analysis, differences among different datasets do exist, but seem to be limited. Nevertheless, it is likely that when conducting more complicated empirical applications, most notably analyses involving dynamic issues, the results may be affected by the selection of the dataset, for the reasons reported above, linked to the presence of “endogeneity biases” when using the AWM and FMS2009 datasets.

4.3 Some stylised facts of the database

In Table 4, we report dynamic cross-correlation functions. We look at the unconditional correlations between detrended series at the standard business cycle frequencies. Following standard practice we measure the co-movement between two series using the cross correlation function (CCF thereafter). Each row of this table displays the CCF between a given detrended fiscal variable at time $t+k$, and detrended GDP at time t . We only show results for a set of standard filters¹⁸ as applied to seasonally-adjusted time series, and so the results do not have to be taken as a systematic tabulation of stylised facts, but rather as an illustration of some properties of the database.

Each row of this table displays the CCF between a measure of detrended real GDP at time t , and a detrended fiscal variable at time $t+k$. Following the standard discussion in the literature, it is said that the two variables co-move in the same direction over the cycle if the maximum value in absolute terms of the estimated correlation coefficient of the detrended series (call it dominant correlation) is positive, that they co-move in opposite directions if it is negative, and that they do not co-move if it is close to zero. A cut-off point of 0.20 roughly corresponds in our sample to the value required to reject at the 5% level of significance the null hypothesis that the population correlation coefficient is zero. Finally, the fiscal variable variable is said to be lagging (leading) the private sector variable if the maximum correlation coefficient is reached for negative (positive) values of k .

The results in the table show the strong pro-cyclical behaviour of government revenues in the euro area, which follow the business cycle behaviour in upturns and downturns, reflecting the operation of automatic stabilisers. Total expenditure, in turn, appears pro-cyclical as well, but lagged, in line with available evidence with annual data [see Lane (2003) and Lamo et al. (2007)]; this behaviour is consistent with a political economy view in which the government increases spending in upturns and is forced to follow a contractionary stance in downturns to preserve fiscal sustainability. Real government

18. The selected filters are: (i) first difference filter; (ii) linear trend; (iii) Hodrick-Prescott filter for two alternative values of the band-pass parameter [the standard 1600, that is a fair approximation of the cycles of France and Italy, while a higher value would be more appropriate for countries with more volatile cycles like Spain, as shown by Marcat and Ravn (2004)]; (iv) Band-Pass filter (with two different band-pass parameters, capturing fluctuations between 1.5 and 8 years and between 1.5 and 12 years, an observation closer to average euro area business cycle duration).

consumption and social payments (THN) follows the same pattern as total government expenditure, as it would be expected given that the two items represent the main part of the aggregate. Within THN, unemployment benefits present a different pattern, given their counter-cyclical nature; unemployment-related benefits increase in downturns and decrease in upturns; UNB seem to lead real GDP by 1 or 2 quarters.

5 Construction of a real-time database for government revenue and expenditure

As stated in the Introduction, we provide in this Section a real-time database for aggregated total government revenue and expenditure, and thus government net lending that can be computed as the difference between the two. We construct the database for the vintages of April 2000, April and October of each year from 2001 till 2008, and April 2009. Thus, we provide time series for total revenue and total expenditure, for the period 1980Q1- till the latest quarterly figures available in each vintage.

The inputs to type (5) models are, as stated above, annual and quarterly government non-financial data, and monthly public accounts indicators. Data availability allow the estimation of monthly models; in order to maximize the information used for the estimation of the models, we decided to estimate monthly models rather than quarterly models for the construction of the real-time database. In any case, for the sake of comparison with the historical fiscal database, and also for simplicity of use we transform the monthly output into the quarterly frequency by summation of the three months that correspond to each quarter.

The sources of information are as follows. Vintages of annual fiscal data are taken from the successive publications of the European Commission's AMECO database, as published in real time; we used directly the electronic sources of the different versions of the AMECO database, as they were available for the period under scrutiny (for previous vintages only the paper version is available). Quarterly government finance statistics are compiled on the basis of the successive issues of the Monthly Bulletin of the ECB; the first available vintage is the August 2004 one, thus corresponding to our October 2004 vintage.

As regards monthly public accounts data, we assume that they are not revised; being recorded in cash terms, this is a more than reasonable approximation, also comparing successive vintages of data when available. The sources of cash data are displayed in Table 1; we chose Federal government total revenues and expenditures for Germany, and the Central Government measures for France, Italy and Spain already used in the construction of the quarterly historical database. Given that we take the historical cash series as indicators, we have to be careful with the assumed monthly observations available at the time of each vintage, for the monthly information to be in line with the annual and quarterly fiscal information available at each specific date. We follow the assumption of availability with a lag of two months; this convention is also a fair heuristic representation of average publication practices in the five euro area countries considered.

In figures 6 and 7 we present a glimpse of the real-time fiscal database. Figure 6 refers to total revenue and Figure 7 to total expenditure. In each figure, Panel A displays the evolution across vintages of quarter-on-quarter growth rates of seasonally-adjusted data for some selected dates separated by eight years (1980Q4, 1988Q4, 1996Q4) and four years (2000Q4, 2004Q4, 2007Q4). Panel B, in turn, presents averages over four years of quarter-on-quarter growth rates of seasonally-adjusted series across vintages, and also the simple correlation coefficient of each vintage of the real-time database with the estimated series in the historical quarterly fiscal database. Panel C presents the same statistics of Panel B, but for year-on-year growth rates on not seasonally adjusted data.

The main messages from figures 6 and 7 are the following. Firstly, when inspecting the evolution of selected quarterly growth rates across vintages (Panel A in each figure), some (small) differences are visible in general, while they are more substantial for the observations pertaining to the part of the sample in which quarterly ESA95 fiscal figures are available; this is the case in particular as regards the first vintage in which quarterly figures were made available (vintage Oct04), but also in subsequent publications of quarterly figures. Secondly, average growth rates of (q-on-q) seasonally-adjusted data (Panel B in each figure) are in general quite stable across vintages. Thirdly, the (contemporaneous) correlation of the time series estimated in real-time with the corresponding series in the historical quarterly fiscal database are, as it could be expected, quite high (lower part of panels B and C in each figure); correlations are lower for vintages that do not include quarterly government finance statistics data (those prior to Oct04), and higher as one moves to the latest vintages (Oct08 and Apr09 incorporate an information set quite similar to that of the historical database). Finally, average growth rates of (y-on-y) non-seasonally-adjusted data (Panel C in each figure) are also quite stable across vintages, displaying a small change as of the Oct04 vintage; this is reasonable, given that non-seasonally quarterly government ESA95 figures are an input to the model as of the Oct04 vintage, while before that date only annual ESA95 figures are included.

6 Conclusions

We construct a quarterly fiscal database for the euro area for the period 1980-2008, solely based on intra-annual fiscal information, on the basis of multivariate, state-space mixed-frequencies models. We provide a quite disaggregated set of nominal fiscal variables for the General Government sector in ESA95 terms. We also provide a real-time database for a subset of variables for bi-annual vintages covering the euro area period.

The main features of our analysis are: (i) we provide seasonally and non-seasonally adjusted series, which are consistently and jointly estimated within our models; (ii) while following an indicator-based approach, we make use of direct fiscal information from basic sources (public accounts' data) and guarantee full coherence of interpolated and official annual and quarterly (when available) series; (iii) most importantly, our database makes use of only intra-annual fiscal information, thus allowing us to capture genuine intra-annual "fiscal" dynamics in the data. With regard to this latter point, it is worth mentioning that we avoid the problem that arises from interpolation approaches of fiscal data based on general macroeconomic indicators. Although fiscal variables may be endogenous to GDP or any other relevant tax/spending bases, the relationships between these variables are, at most, indirect and in addition they are difficult to estimate.

The fiscal databases developed in this paper (baseline database and real-time database) present the potential of constituting a useful input for broader macroeconomic analyses using euro area data and involving the use of fiscal variables, exercise currently conducted either with annual data or with limited availability of quarterly fiscal information. Studies of this type that have recently received renewed attention include simulation exercises to assess the impact fiscal stimulus packages, analyses of the interaction between monetary and fiscal policies, or the estimation of fiscal policy rules.

REFERENCES

- AARLE, B. VAN, H. GARRETSEN and N. GOBBIN (2003). "Monetary and fiscal transmission in the euro-area: evidence from a structural VAR analysis", *Journal of Economics & Business*, 55, pp. 609-638.
- ANDERSON, H., M. DUNGEY, D. R. OSBORN and F. VAHID (2007). *Constructing historical euro area data*, CAMA Working Papers 2007-18, Australian National University, Centre for Applied Macroeconomic Analysis.
- BEYER, A., J. A. DOORNOK and D. F. HENDRY (2001). "Constructing historical euro-zone data", *The Economic Journal*, 111, pp. 102-121.
- BOSKER, E. M. (2006). "On the aggregation of eurozone data", *Economics Letters*, 90, 260-265.
- BRÜGGEMANN, R., and H. LÜTKEPOHL (2006). "A Small Monetary System for the Euro Area Based on German Data", *Journal of Applied Econometrics*, 21, pp. 683-702.
- BRUNEAU, C., and O. de BANDT (2003). "Monetary and fiscal policy in the transition to EMU: what do SVAR models tell us?", *Economic Modelling*, 20, pp. 959-985.
- BRYSON A. E. JR., and Y. C. HO (1969). *Applied optimal control: optimization, estimation, and control*, Waltham, MA: Blaisdell.
- CIMADOMO, J. (2008). *Fiscal policy in real-time*, ECB Working Paper 919.
- COENEN, G., K. CHRISTOFFEL and A. WARNE (2008). *The New Area-Wide Model of the Euro Area: A Micro-Founded Open-Economy Model for Forecasting and Policy Analysis*, ECB Working Paper No. 944.
- COGAN, J. F., T. CWIK, J. B. TAYLOR and V. WIELAND (2009). *New Keynesian versus Old Keynesian Government Spending Multipliers*, Working Paper.
- CROUSHORE, D., and C. L. EVANS (2006). "Data Revisions and the Identification of Monetary Policy Shocks", *Journal of Monetary Economics*, 53, pp. 1135-1160.
- CROUSHORE, D., and T. STARK (2001). "A real-time data set for macroeconomists", *Journal of Econometrics*, 105, pp. 111-130.
- (2003). "A Real-Time Data Set for Macroeconomists: Does the Data Vintage Matter?", *The Review of Economics and Statistics*, 85, pp. 605-617.
- DUISENBERG, W. F. (2003). "Monetary and fiscal policy in the euro area", Introduction at the *International Monetary Conference*, 3 June, Berlin.
Downloadable from <http://www.ecb.int/key/03/sp030603.html>.
- EUROPEAN CENTRAL BANK (2004). "Properties and Use of General Government Quarterly Accounts", *ECB Monthly Bulletin*, August issue.
- (2008). "One monetary and many fiscal policies: ensuring a smooth functioning of EMU", *ECB Monthly Bulletin*, July issue.
- (2009). *ECB Monthly Bulletin*, September issue, Section 5 (Boxes 9 and 10), pp. 81-89.
- EUROPEAN COMMISSION (2002a). Reg. (EC) No 1221/2002 of the European Parliament and of the Council of 10 June 2002 on *Quarterly non-financial accounts for general government*.
- (2002b). *ESA95 manual on government deficit and debt, Methods and Nomenclatures series*, European Commission, Luxembourg.
- (2006). *Manual on quarterly non-financial accounts for general government*, European Commission, Luxembourg.
http://epp.eurostat.ec.europa.eu/cache/ITY_SDDS/Annexes/gov_q_ggnfa_esms_an7.pdf.
- (2007). "Quarterly government accounts and fiscal surveillance", in *Public Finances in EMU*, European Commission, Brussels, pp. 103-106.
- (2009). "Public Finances in EMU", *European Economy*, 5/2009, European Commission, Brussels.
- FAGAN, G., J. HENRY and R. MESTRE (2001). *An area-wide model (AWM) for the euro area*, European Central Bank Working Paper Series, 42, January.
- (2005). "An area-wide model (AWM) for the euro area", *Economic Modelling*, 22, pp. 39-59.
- FORNI, L., L. MONTEFORTE and L. SESSA (2009). "The general equilibrium effects of fiscal policy: estimates for the euro area", *Journal of Public Economics*, 93, pp. 559-585.
- GIANNONE, D., J. HENRY, M. LALIK and M. MODUGNO (2006). "An Area-Wide Real Time Database for the Euro-Area", presentation at the *LINK meeting*, Geneva 31.10.2006.
Available at www.chass.utoronto.ca/link/meeting/papers/1031_pm_henry.pdf.
- GIORDANO, R., S. MOMIGLIANO, S. NERI and R. PEROTTI (2007). "The effects of fiscal policy in Italy: evidence from a VAR model", *European Journal of Political Economy*, 23, pp. 707-733.
- GÓMEZ, V., and A. MARAVALL (1998). *Automatic modeling methods for univariate series*, Documentos de Trabajo, No. 9808, Banco de España.
- (1996). *Programs TRAMO (Time series Regression with Arima noise, Missing observations, and Outliers) and SEATS (Signal Extraction in Arima Time Series). Instructions for the User*, Working Paper No. 9628, Banco de España.
- HARVEY, A. (1989). *Forecasting Structural Time Series Models and the Kalman Filter*, Cambridge University Press.
- HARVEY, A. C., and C. H. CHUNG (2000). "Estimating the underlying change in unemployment in the UK", *Journal of the Royal Statistical Society, Series A*, 163, pp. 303-339.
- JACOBS, J. P. A. M., G. H. KUPER and E. STERKEN (2003). *A structural VAR model of the euro area*, CPB Workshop on Economic Policy Modelling, The Hague, November.
- KALMAN, R. E. (1960). "A new approach to linear filtering and prediction problems", *Journal of Basic Engineering*, 82, pp. 35-45.
- KALMAN, R. E., and R. S. BUCY (1961). "New Results in Linear Filtering and Prediction Theory", *Journal of Basic Engineering*, 83, pp. 95-108.

- LAMO, A., J. J. PÉREZ and L. SCHUKNECHT (2007). *The cyclicity of consumption, wages and employment of the public sector in the euro area*, ECB WP No. 757.
- LANE, P. (2003). "The cyclical behaviour of fiscal policy: evidence from the OECD", *Journal of Public Economics*, 87, pp. 2661-2675.
- LEAL, T., J. J. PÉREZ, M. TUJULA and J. P. VIDAL (2008). "Fiscal forecasting: lessons from the literature and challenges", *Fiscal Studies*, 29, pp. 347-386.
- MARCET, A., and M. RAVN (2004). *The HP-filter in cross-country comparisons*, CEPR DP 4244.
- MOAURO, F., and G. SAVIO (2005). "Temporal Disaggregation Using Multivariate Structural Time Series Models", *Econometrics Journal*, 8, pp. 214-234.
- MORRIS, R., C. R. BRAS, F. DE CASTRO, S. JONK, J. KREMER, S. LINEHAN, M. R. MARINO, C. SCHALCK and O. TKACEVS (2009). *Explaining government revenue windfalls and shortfalls: an analysis for selected EU countries*, to appear, Working Paper Series of the ECB.
- MORRIS, R., and L. SCHUKNECHT (2007). *Structural balances and revenue windfalls - the role of asset prices revisited*, ECB Working Paper No. 737.
- ONORANTE, L., D. J. PEDREGAL, J. J. PÉREZ and S. SIGNORINI (2009). "The usefulness of infra-annual government cash budgetary data for fiscal forecasting in the euro area", forthcoming in *Journal of Policy Modeling*.
- ORPHANIDES, A. (2001). "Monetary Policy Rules Based on Real-Time Data", *American Economic Review*, 91, pp. 964-985.
- PEDREGAL, D. J., and J. J. PÉREZ (2009). "Should quarterly government finance statistics be used for fiscal surveillance in Europe?", forthcoming in *International Journal of Forecasting*.
- PEDREGAL, D. J., and P. C. YOUNG (2002). "Statistical Approaches to Modelling and Forecasting Time Series", in Clements and Hendry (eds.), *Companion to Economic Forecasting*, Blackwell Publishers: Oxford, pp. 69-104.
- PÉREZ, J. J. (2007). "Leading Indicators for Euro Area Government Deficits", *International Journal of Forecasting*, 23, pp. 259-275.
- PÉREZ, J. J., and A. J. SÁNCHEZ (2009). *Is there a signalling role for public wages? Evidence for the euro area based on macro data*, mimeo, July, Bank of Spain.
- PROIETTI, T., and F. MOAURO (2006). "Dynamic Factor Analysis with Nonlinear Temporal Aggregation Constraints". *Journal of the Royal Statistical Society, series C (Applied Statistics)*, 55, pp. 281-300.
- RATTO, M., W. ROEGER and J. IN'T VELD (2009). "Quest III, An estimated open-economy DSGE model of the Eurozone with fiscal and monetary policy", *Economic Modelling*, 26, pp. 222-233.
- SILVESTRINI, A., M. SALTO, L. MOULIN and D. VEREDAS (2008). "Monitoring and forecasting annual public finance deficit every month: the case of France", *Empirical Economics*, 34, pp. 493-524.
- SMETS, F., and R. WOUTERS (2003). "An estimated Dynamic Stochastic General Equilibrium model of the euro area", *Journal of the European Economic Association*, 1, pp. 1123-1175.
- WEST, M., and J. HARRISON (1989). *Bayesian Forecasting and Dynamic Models*, New York: Springer-Verlag.
- YOUNG, P. C., and D. J. PEDREGAL (1999). "Recursive and En-Block approaches to signal extraction", *Journal of Applied Statistics*, 26, pp. 103-128

Appendix A. Filtering vs. smoothing

Two simple simulations would illustrate the improvement of smoothed estimates over filtered ones. The first simulation consists of 5,000 runs of 1,000 data points of a random walk plus noise model in equation (A1).

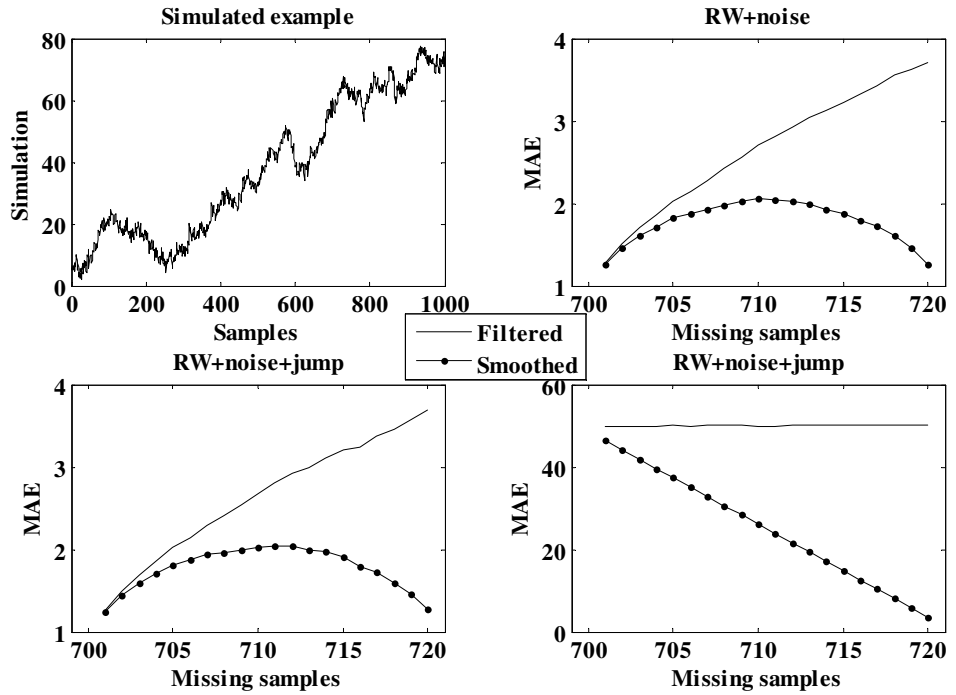
$$z_t = \frac{w_t}{(1-B)} + v_t \quad (\text{A1})$$

with $\sigma_w^2 / \sigma_v^2 = 1$ (top left panel of Figure A shows one example). Several artificial missing values are generated from samples 700 to 720. The absolute errors of smoothed and filtered estimates for the missing values are computed for the 5,000 simulations and the mean behaviour is shown in Figure A (top right panel).

The second simulation consists of 5,000 runs of the same model in which an artificial positive jump is included in sample 700 and 20 observations just after such jump are set to missing values (701 to 720). Results, both assuming the position of the jump known (bottom left) and unknown (bottom right) are also shown in Figure A.

Conclusions from Figure A are clear: using smoothed estimates as the reconstruction of the missing values produce closer observations to the true values than the filtered ones. Filtered estimates error always increase along the missing gap because the algorithm looks backwards and the available information is far away as the algorithm proceeds forward. However, since the smoother algorithm takes into account information at both ends of the missing gap, the errors are minimum at both extremes and maximum at the centre, where the true information is far away. Something not shown on the figure is that as the ratio σ_w^2 / σ_v^2 decreases, i.e. as the signal to noise ratio decreases, the advantages of smoothed estimates tend to disappear, but it is never worse than the filtered counterparts.

Figure A: Filtering vs smoothing? Simulation results: top-left, one run of simulation in equation (A1); top-right, Mean Absolute Errors of 5,000 runs over the missing gap; bottom-left, MAE with an artificial jump added and estimated; bottom-right, MAE of last, but ignoring the existence of jump.



Appendix B. The construction of the database variable by variable

Total government revenue (TOR). Total government revenue is interpolated directly rather than computed on the basis of its subcomponents, as there is more information available for the aggregate than for the components. In this case $\{u_i\}$ contains a total revenue variable for the five countries considered at the quarterly frequency, referred to the General Government sector for the period 1980-2008 in the cases of Germany (cash concept) and the Central Government sector for France (cash, 1980-2008), Italy (cash, 1980-2008), the Netherlands (cash, 1980-2008) and Spain (ESA, 1984-2008).

Given the wealth of available variables in the case of TOR, it is also possible to estimate a model at the monthly frequency with good quality data input, in order to check the obtained estimates. In this case, Federal/Central government indicators are available for the five considered countries for the period starting in January 1980 (January 1984 in the case of Spain).

Direct taxes (DTX). In the case of direct taxes it was necessary to resort to quarterly ESA95 data to build up country variables, and to estimate a model with an unbalanced dataset, i.e. with missing values for three countries in matrix $\{u_i\}$ (Italy, Netherlands, and to a lesser extent Spain). In the cases of Italy and the Netherlands the intra-annual information used is quarterly ESA95 data for the period 1991Q1-2008Q4 for the general government. In the case of France it was possible to reconstruct a homogeneous quarterly time series for the general government sector in ESA terms for 1980-2008, resorting to the Eurostat database (for the period from 1991 on) backcasted (using growth rates) with the same general government series extracted from the BIS database (period before 1991). In the cases of Germany and Spain, information for the Federal/Central government covering the periods 1980Q1-2008Q4 and 1984Q1-2008Q4 respectively, was used to backcast, by means of model (5), consistent ESA quarterly series make up of quarterly (for the periods 1991 onwards and 1995 onwards, respectively) and annual information (for the period 1980-1990 and 1980-1994, respectively).

The decomposition of DTX into direct taxes paid by corporations (DTE) and direct taxes paid by households (DTH) is done in a rather mechanical way, given the absence of direct quarterly information for the two sub items. Each quarterly DTX figure is distributed into the corresponding DTE and DTH quarterly figures using the weights obtained from annual proportions. Thus, a quarterly DTX observation is allocated to a quarterly DTE figure by weighting the corresponding quarterly DTX observation by the fraction of DTE over DTX in the year to which that quarter belongs to. Then, the quarterly figure for DTH is computed as a residual: $DTH = DTX - DTE$.

Social security contributions (SCT). For Social Security Contributions we were only able to find data for Germany, France and Spain, thus $\{u_i\}$ includes only three variables in this case. In the case of France we build up a homogeneous quarterly time series for the general government sector in ESA terms for 1980-2008, using to the Eurostat database (data for 1991-2008) backcast (using growth rates) with an analogous series extracted from the BIS database (period 1980-1990). As regards Germany, available information regarding social contributions is taken from the BIS database to interpolate, by means of model (5), consistent ESA series make up of quarterly (for the periods 1991 onwards) and annual information

(for the period 1980-1990). The same procedure was applied with Spanish series, but in this case the indicator variable used was total social security contributions received by the Social Security System.

The decomposition of SCT into employer's social contributions (SCR) and other social contributions (SCE) is also done in a fairly mechanical way, as in the case of direct taxes. It is worth noticing that SCE includes contributions paid by employees, but also contributions paid by self-employed and other. It is also worth mentioning that the breakdown is only provided for the period 1991Q1-2008Q4, the only period for which we found consistent information.

Indirect taxes (TIN). In the cases of Germany, Italy, Spain and the Netherlands information on "indirect taxes less subsidies" as provided by national accounts, covering the period 1980Q1-2008Q4, was used to backcast, by means of model (5), consistent country ESA series make up of quarterly (for the periods 1991 onwards, 1995 onwards in the case of Spain) and annual information (for the remaining periods). In the country models we included, in addition, direct information on indirect taxes for the Federal/Central governments, as available from the cash accounts of the governments. In the case of France it was possible to reconstruct a homogeneous quarterly time series for the general government sector in ESA terms for 1980-2008, as discussed above.

Other revenues (OTOR). The item "Other government revenues" is computed as a residual as $OTOR = TOR - DTX - SCT - TIN$. This variable accounts for some 10% of total revenue, and includes national accounts items such as "sales", "capital revenue", and "other current transfers receivable", that includes in turn, among other items, net receipts received by the euro area general government from the EU Budget and interest receivable.

Total government expenditure (TOE). Total government expenditure is interpolated directly. In this case $\{u_i\}$ contains a total expenditure variable for the five countries considered, referred to the General Government sector for the period 1980-2008 in the cases of Germany (cash concept), and the Central Government sector for France (cash, 1980-2008), Italy (cash, 1980-2008), the Netherlands (cash, 1980-2008) and Spain (ESA, 1984-2008).

As in the case of TOR, it is also possible to estimate a model at the monthly frequency with good quality data input, as check, given data availability. In this case, Federal/Central government indicators are available for the five considered countries for the period starting in January 1980 (January 1984 in the case of Spain).

Final consumption of the General Government (GCN, GCR). Non-seasonally and seasonally adjusted real and nominal government consumption variables are based on available raw information from Eurostat (ESA95 database). In the case of the real variables, homogeneous series in the ESA95 database for Germany (available for the period 1991Q1 onwards), Spain (1995Q1 onwards) and Italy (1981Q1 onwards) are backcasted using growth rates of available real government consumption series in former definitions (ESA79, West Germany in the case of Germany). The series for France and the Netherlands are available for the period 1980Q1-2008Q4 in the ESA95 database. In the case of GCN the series were available for all countries for the period 1980Q1-2008Q4 in the ESA95 database, with the exception of Germany, in which case it was necessary to join West German and Unified German series, following the usual procedure.

Government wage consumption expenditure (COE). For France, it was possible to reconstruct a homogeneous COE quarterly time series for the general government sector in ESA terms for 1980-2008, as in the cases discussed above. The figures of Giordano et al. (2007) are used in conjunction with the available official data to build up consistent general government series for 1982Q1-2008Q4 for Italy. In the case of Germany and Spain we used available Federal/Central government variables of personnel expenditure to interpolate the available (annual-quarterly) government finance statistics' series. In the euro area, COE represents some 50% of GCN.

Government no-wage consumption expenditure (OGCN). Government non-wage consumption expenditure is computed as a residual as the difference of final consumption expenditure (GCN) and compensation of employees (COE). Thus, it includes not only government purchases (intermediate consumption), but also "Social transfers in kind provided via non government units", "Consumption of fixed capital", (negative) "Sales", "Taxes on production paid minus subsidies received" and "Net operating surplus". The latter two items are residual, while, in the euro area, intermediate consumption represents some 25% of total government consumption, approximately the same fraction as "Social transfers in kind provided via non government units".

Government employment (LGN). EU member states do not report to Eurostat standardized annual employment figures for the general government sector. Thus, in this case it is necessary to resort to other sources. As discussed in Pérez and Sánchez (2009), we use annual OECD as an anchor for the euro area aggregate. As regards quarterly information, the available source covering a wider time span can be found in Eurostat's ESA95 figures on "Employment in other services", mainly non-market services, the bulk of which are related to government activities. We take data from this source for the period 1980Q1 onwards for Germany, Spain and Italy, for the period starting in 1990Q1 for France and for the period 1987Q1 onwards for the Netherlands. As an additional indicator we used our estimated measurer of euro area GCR, given that government consumption in real terms should contain information of changes in government employment underlying COE.

Government investment. For France and the Netherlands, it was possible to reconstruct homogeneous GIN quarterly time series for the general government sector in ESA terms for 1980-2008, as in the cases discussed above. In the case of Italy, the figures of Giordano et al. (2007) are used in conjunction with the available official data to build up consistent general government series for 1982Q1-2008Q4. As regards Germany and Spain we use available Federal/Central government variables to interpolate the available (annual-quarterly) government finance statistics' series.

Interest payments (INP). In the case of Germany and Spain we use available Federal/Central government variables of interest expenditure to interpolate the available (annual-quarterly) government finance statistics' series. For France, it was possible to reconstruct a homogeneous INP quarterly time series for the general government sector in ESA terms for 1980-2008, as in the cases discussed above. The figures of Giordano et al. (2007) are used in conjunction with the available official data to build up consistent general government series for 1982Q1-2008Q4 for Italy.

Subsidies (SIN). In order to obtain a quarterly series for SIN for the whole period 1980-2008 we proceed in two steps. In a first step, we used national accounts euro area "indirect taxes less subsidies" data (available for the period 1991Q1 onwards) and

interpolated the period for which only annual data is available using model (5) and as indicators quarterly “indirect taxes less subsidies” as provided by national accounts for the five countries considered (for the period 1980-2008). The so constructed variable, was then subtracted from TIN (as computed above) in order to produce a measure of “Subsidies”, call it SIN*.

SIN* is not yet a perfect measure to be taken for our variable “Subsidies”, given that the concept of “indirect taxes less subsidies” included in the standard national accounts database does include net indirect taxes paid to EU institutions and net subsidies received from EU institutions, while these are excluded from the accounts of the general government. This is due to the fact that funds to and from EU institutions are allocated to the accounts of the “rest of the world” in the accounts of the sectors. Thus, in a second step we used SIN* as an indicator to interpolate SIN.

Social payments (THN) and unemployment benefits (UNB). By the item “Social payments” we refer to the national accounts concept D.62, i.e. social transfers no including “Social transfers in kind provided via non government units” (D.6311+D.63121+D.63131) that are instead included in government consumption, as discussed above. The variable $THN^* = TOE - SIN - INP - GCN - GIN$, that is, total expenditure excluding government consumption, government investment, interest payments and subsidies, should be a fair proxy of social payments. Indeed, for the euro area, the ratio of annual ESA THN and THN* in levels is equal to 1.08 on average for the period 1995-2008. Thus, given the absence of other intra-annual information of help, we use as indicator of euro area THN the derived quarterly variable THN*. We estimate a model of type (5) in which $\{z_t\}$ is THN, and $\{u_t\}$ is THN*.

A relevant subcomponent of social payments is unemployment benefits (COFOG 10.5.0 category). This is a variable that appears in numerous macroeconomic models and thus we decided to provide an estimate for it. For UNB, we use as quarterly indicator quarterly euro area THN (as computed in the previous step).

Other expenditure (OTOE). The item “Other government expenditure” is computed as a residual as $OTOE = TOE - THN - INP - SIN - GCN - GIN$. This variable accounts for some 7% of total expenditure. It includes the following main items: “other current transfers payable” (that includes small items like payments to the EU Budget), “other net acquisitions of non-financial assets” and “capital transfers”.

Appendix C. Structure and contents of the databases

Quarterly fiscal database. It is provided in MsExcel format (file: EA_Qfiscal_PPP2009_DATABASE.xls) and comprises four worksheets: (i) DATABASE_FIS_non-SA: smoothed non-seasonally adjusted series in columns; (ii) DATABASE_FIS_SA: smoothed seasonally adjusted series in columns; (iii) DATABASE_KF_non-SA: filtered non-seasonally adjusted series in columns; (iv) DATABASE_KF_SA: filtered seasonally adjusted series in columns.

Real-time quarterly fiscal database. It is also provided in MsExcel format (file: EA_Qfiscal_PPP2009_Real-time-database.xls) and comprises eight worksheets: (i) RTD_TOR_FIS: smoothed non-seasonally adjusted series in columns (total government revenue, TOR); (ii) RTD_TOR_FIS_SA: smoothed seasonally adjusted series in columns (TOR); (iii) RTD_TOR_KF: filtered non-seasonally adjusted series in columns (TOR); (iv) RTD_TOR_KF_SA: filtered seasonally adjusted series in columns (TOR); (v) RTD_TOE_FIS: smoothed non-seasonally adjusted series in columns (total government expenditure, TOE); (ii) RTD_TOE_FIS_SA: smoothed seasonally adjusted series in columns (TOE); (iii) RTD_TOE_KF: filtered non-seasonally adjusted series in columns (TOE); (iv) RTD_TOE_KF_SA: filtered seasonally adjusted series in columns (TOE).

Table 1: Data sources for the countries

		Germany	France	Italy	Spain	Netherlands
Total Revenue	TOR	Federal Ministry of Finance (m CG 1980-2008), Eurostat (q GG 1991-2008), BIS (q GG cash 1980-2008)	Ministry of Finance (m CG 1980-2008), Eurostat (q GG 1991-2008)	Banca de Italia (m CG 1980-2008)	INE (m CG 1984-2008)	Ministry of Finance (m CG 1980-2008)
Direct taxes	DTX	Federal Ministry of Finance (m CG 1980-2008), Eurostat (q GG 1991-2008)	BIS (q GG 1980-2008), Eurostat (q GG 1991-2008)	Eurostat (q GG 1991-2008)	INE (m CG 1984-2008), Eurostat (q GG 1995-2008)	Eurostat (q GG 1991-2008)
Social Sec. Contributions	SCT	BIS (q GG west 1980-1993), BIS (q GG 1991-1998)	BIS (q GG 1980-1998), Eurostat (q GG 1991-2008)	---	INE (m CG 1984-1994), Eurostat (q GG 1995-2008), Social Security System (m 1994-2008)	---
Indirect taxes	TIN	BIS (q GG west 1980-1993), Eurostat (q GG 1991-2008)	BIS (q GG 1980-1998), Eurostat (q GG 1991-2008)	ESA95-NA (q GG 1980-2008), Eurostat (q GG 1991-2008)	ESA95-NA (q GG 1980-2008), Eurostat (q GG 1995-2008)	BIS (q GG 1980-1998), Eurostat (q GG 1991-2008)
Total expenditure	TOE	Federal Ministry of Finance (m CG 1980-2008), Eurostat (q GG 1991-2008), BIS (q GG cash 1980-2008)	Ministry of Finance (m CG 1980-2008), Eurostat (q GG 1991-2008)	Banca de Italia (m CG 1980-2008)	INE (m CG 1984-2008)	Ministry of Finance (m CG 1980-2008)
Interest payments	INP	Federal Ministry of Finance (m CG 1980-2008)	BIS (q GG 1980-2008)	Giordano et al. (2007) (q GG 1982-2004)	INE (m CG 1984-2008), Eurostat (q GG 1995-2008)	---
Government consumption	GCN	BIS (q GG west 1980-1993), ESA95-NA (q GG 1991-2008)	ESA95-NA (q GG 1980-2008)	ESA95-NA (q GG 1980-2008)	ESA95-NA (q GG 1980-2008)	ESA95-NA (q GG 1980-2008)
Compensation of emp.	COE	Federal Ministry of Finance (m CG 1980-2008)	BIS (q GG 1980-2008), Eurostat (q GG 1991-2008)	Giordano et al. (2007) (q GG 1982-2004)	INE (m CG 1984-2008), Eurostat (q GG 1995-2008)	---
Government investment	GIN	Federal Ministry of Finance (m CG 1980-2008), Eurostat (q GG 1991-2008)	BIS (q GG 1980-2008), Eurostat (q GG 1991-2008)	Giordano et al. (2007) (q GG 1982-2004)	INE (m CG 1984-2008), Eurostat (q GG 1995-2008)	BIS (q GG 1980-1998), CBS (q GG 1987-2008)
Real government cons.	GCR	BIS (q GG west 1980-1993), ESA95-NA (q GG 1991-2008)	ESA95-NA (q GG 1980-2008)	BIS (q GG 1980-1998), ESA95-NA (q GG 1981-2008)	BIS (q GG 1980-1998), ESA95-NA (q GG 1995-2008)	ESA95-NA (q GG 1980-2008)
Government employment	LGN	ESA95-NA (q 1980-2008)	ESA95-NA (q 1990-2008)	ESA95-NA (q 1980-2008)	ESA95-NA (q 1980-2008)	ESA95-NA (q 1987-2008)

Table 2: The structure of the quarterly fiscal database

DEFICIT (DEF)	
[TOR – TOE]	
<p>TOTAL REVENUES (TOR)</p> <ul style="list-style-type: none"> - DIRECT TAXES (DTX) <ul style="list-style-type: none"> - OF WHICH PAID BY ENTERPRISES (DTE) - OF WHICH PAID BY HOUSEHOLDS (DTH) - SOCIAL SECURITY CONTRIBUTIONS (SCT) <ul style="list-style-type: none"> - OF WHICH BY EMPLOYERS (SCR) - OF WHICH BY EMPLOYEES (SCE) - INDIRECT TAXES (TIN) - OTHER REVENUE (OTOR) <ul style="list-style-type: none"> [TOR – DTX – SCT – TIN] 	<p>TOTAL EXPENDITURES (TOE)</p> <ul style="list-style-type: none"> - SOCIAL PAYMENTS (THN) <ul style="list-style-type: none"> - OF WHICH UNEMPLOYMENT BENEFITS (UNB) - GOVERNMENT CONSUMPTION (GCN) <ul style="list-style-type: none"> - OF WHICH COMPENSATION OF EMPLOYEES (COE) - OF WHICH NON-WAGE CONSUMPTION EXPENDITURE (OGCN) [GCN-COE] - SUBSIDIES (SIN) - GOVERNMENT INVESTMENT (GIN) - INTEREST PAYMENTS (INP) - OTHER EXPENDITURE (OTOR) <ul style="list-style-type: none"> [TOE – THN – GCN – SIN – GIN – INP] <p>MEMO ITEMS</p> <ul style="list-style-type: none"> - GOVERNMENT EMPLOYMENT (LGN) - REAL GOVERNMENT CONSUMPTION (GCR)

Table 3. Correlation coefficients (quarter-on-quarter growth rates of seasonally-adjusted series): quarterly database, AWM and database by Forni et al. (2009). Sample 1980Q1-2005Q4.

TOR	AWM_2008	AWM_2007	AWM_2005	FMS2009	PPP2009
AWM_2008	1.00				
AWM_2007	0.94	1.00			
AWM_2005	0.85	0.84	1.00		
FMS2009	0.64	0.65	0.81	1.00	
PPP2009	0.74	0.72	0.82	0.76	1.00

TOE	AWM_2008	AWM_2007	AWM_2005	FMM2009	PPP2009
AWM_2008	1.00				
AWM_2007	0.95	1.00			
FMS2009	0.90	0.95	1.00		
FMM2009	-	-	-	1.00	
PPP2009	0.83	0.84	0.85	-	1.00

GCR	AWM_2008	AWM_2007	AWM_2005	FMS2009	PPP2009
AWM_2008	1.00				
AWM_2007	0.99	1.00			
AWM_2005	0.97	0.98	1.00		
FMS2009	0.97	0.98	0.98	1.00	
PPP2009	0.80	0.79	0.78	0.80	1.00

THN	AWM_2008	AWM_2007	AWM_2005	FMS2009	PPP2009
AWM_2008	1.00				
AWM_2007	0.56	1.00			
AWM_2005	0.49	0.40	1.00		
FMS2009	0.76	0.53	0.44	1.00	
PPP2009	0.80	0.53	0.42	0.90	1.00

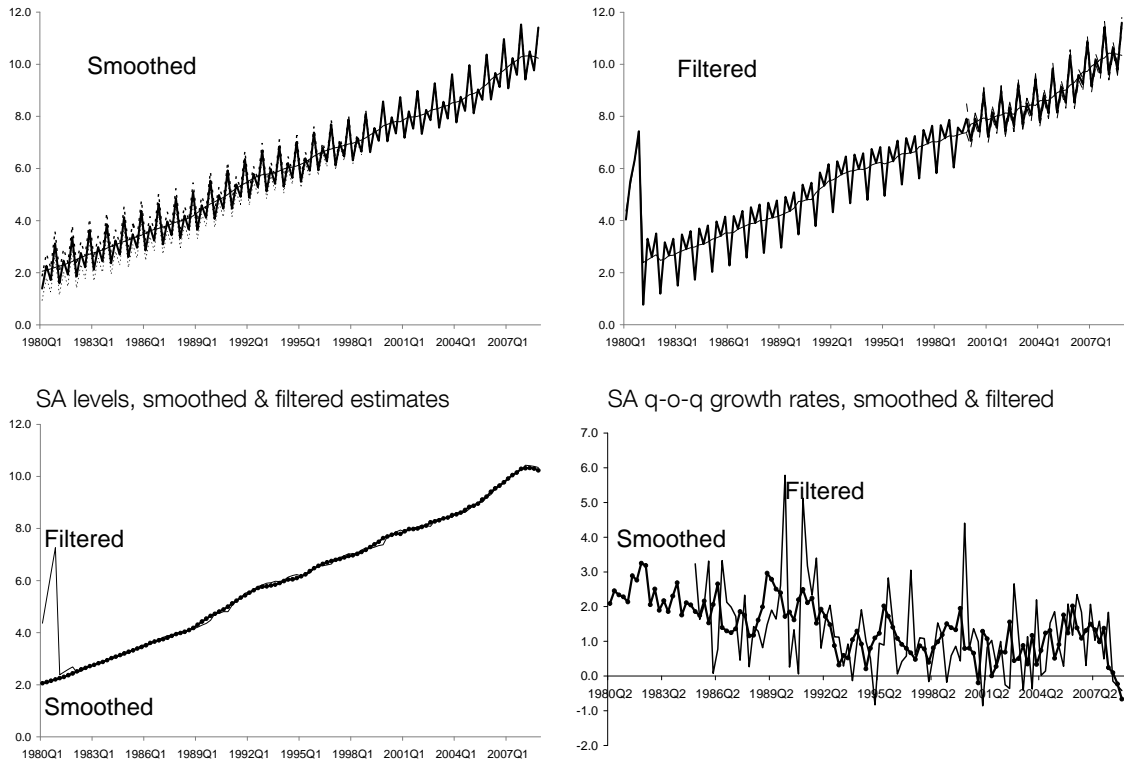
Table 4. Some stylised facts computed on the basis of the quarterly fiscal database. Sample 1980Q1-2008Q4. Quarterly real GDP and GDP deflator are taken from the AWM database.

		CCF (GDP _t , fiscal _{t+k})														
		k														
		relative	-6	-5	-4	-3	-2	-1	0	1	2	3	4	5	6	
		std														
TOR																
First diff filter	1.37	0.11	0.17	0.21	0.18	0.20	0.20	0.43	0.34	0.19	0.28	0.19	0.15	0.18		pro-cyclical contemp
Linear trend	1.53	0.23	0.35	0.47	0.56	0.65	0.72	0.78	0.79	0.77	0.73	0.67	0.60	0.52		pro-cyclical lagged
HP 1600	1.68	0.10	0.24	0.35	0.44	0.52	0.59	0.66	0.64	0.59	0.54	0.46	0.36	0.28		pro-cyclical contemp
HP 3200	1.43	0.21	0.34	0.46	0.54	0.62	0.69	0.75	0.73	0.69	0.64	0.56	0.47	0.37		pro-cyclical contemp
BP (1,5, 8 years)	2.11	0.01	0.16	0.29	0.41	0.52	0.61	0.65	0.63	0.57	0.49	0.40	0.30	0.18		pro-cyclical contemp
BP (1,5, 12 years)	1.64	0.26	0.41	0.53	0.64	0.73	0.80	0.82	0.81	0.76	0.69	0.60	0.49	0.37		pro-cyclical contemp
Average	1.63	0.15	0.28	0.39	0.46	0.54	0.60	0.68	0.66	0.60	0.56	0.48	0.40	0.32		pro-cyclical contemp
TOE																
First diff filter	0.82	-0.02	-0.03	-0.07	-0.09	-0.02	-0.08	0.12	0.14	0.20	0.39	0.34	0.36	0.34		pro-cyclical lagged
Linear trend	1.88	-0.27	-0.16	-0.06	0.05	0.17	0.29	0.41	0.51	0.60	0.67	0.72	0.75	0.76		pro-cyclical lagged
HP 1600	1.15	-0.45	-0.38	-0.32	-0.25	-0.15	-0.03	0.13	0.29	0.44	0.57	0.64	0.67	0.65		pro-cyclical lagged
HP 3200	1.15	-0.47	-0.38	-0.29	-0.19	-0.07	0.06	0.21	0.35	0.49	0.61	0.69	0.73	0.74		pro-cyclical lagged
BP (1,5, 8 years)	1.05	-0.34	-0.30	-0.25	-0.20	-0.12	0.00	0.17	0.35	0.50	0.60	0.65	0.63	0.56		pro-cyclical lagged
BP (1,5, 12 years)	1.02	-0.64	-0.56	-0.47	-0.37	-0.24	-0.10	0.06	0.23	0.39	0.53	0.64	0.71	0.75		pro-cyclical lagged
Average	1.18	-0.37	-0.30	-0.24	-0.18	-0.07	0.02	0.18	0.31	0.44	0.56	0.61	0.64	0.63		pro-cyclical lagged
GCR																
First diff filter	1.80	-0.03	-0.12	-0.04	-0.04	-0.04	-0.05	0.12	-0.08	-0.01	-0.03	0.17	-0.03	0.10		weak, pro-cyclical lagged
Linear trend	0.38	0.09	0.09	0.11	0.14	0.17	0.20	0.23	0.27	0.30	0.30	0.35	0.32	0.33		pro-cyclical lagged
HP 1600	0.42	-0.21	-0.30	-0.30	-0.27	-0.22	-0.15	-0.06	-0.02	0.05	0.11	0.26	0.26	0.34		pro-cyclical lagged
HP 3200	0.28	-0.18	-0.22	-0.19	-0.15	-0.09	-0.02	0.07	0.13	0.20	0.25	0.37	0.37	0.44		pro-cyclical lagged
BP (1,5, 8 years)	0.32	-0.39	-0.50	-0.55	-0.53	-0.47	-0.37	-0.26	-0.15	-0.04	0.06	0.18	0.31	0.43		counter-cyclical lagged
BP (1,5, 12 years)	0.17	-0.48	-0.51	-0.50	-0.44	-0.36	-0.25	-0.14	-0.02	0.09	0.20	0.31	0.43	0.53		pro-cyclical lagged
Average	0.56	-0.20	-0.26	-0.25	-0.22	-0.17	-0.11	-0.01	0.02	0.10	0.15	0.27	0.28	0.36		pro-cyclical lagged
THN																
First diff filter	0.92	0.03	-0.02	-0.12	-0.21	-0.12	-0.18	-0.11	-0.08	-0.06	0.09	0.13	0.23	0.28		weak, pro-cyclical lagged
Linear trend	1.77	-0.41	-0.34	-0.28	-0.20	-0.11	-0.01	0.09	0.19	0.29	0.39	0.48	0.56	0.62		pro-cyclical lagged
HP 1600	1.12	-0.25	-0.28	-0.32	-0.36	-0.36	-0.34	-0.29	-0.17	-0.02	0.14	0.28	0.41	0.51		pro-cyclical lagged
HP 3200	0.94	-0.42	-0.41	-0.41	-0.40	-0.36	-0.30	-0.22	-0.08	0.07	0.22	0.36	0.48	0.58		pro-cyclical lagged
BP (1,5, 8 years)	1.17	-0.09	-0.19	-0.31	-0.41	-0.49	-0.51	-0.48	-0.38	-0.24	-0.09	0.08	0.23	0.36		counter-cyclical lagged
BP (1,5, 12 years)	0.99	-0.47	-0.47	-0.47	-0.46	-0.43	-0.38	-0.29	-0.17	-0.03	0.12	0.27	0.40	0.52		pro-cyclical lagged
Average	1.15	-0.27	-0.29	-0.32	-0.34	-0.31	-0.29	-0.22	-0.12	0.00	0.15	0.27	0.39	0.48		pro-cyclical lagged
UNB																
First diff filter	41.64	-0.08	-0.04	-0.11	-0.24	-0.19	-0.18	-0.24	-0.16	-0.11	-0.04	0.04	0.06	0.10		counter-cyclical lead
Linear trend	68.13	-0.53	-0.51	-0.47	-0.43	-0.36	-0.28	-0.19	-0.11	-0.01	0.09	0.20	0.30	0.41		counter-cyclical lead
HP 1600	60.46	-0.31	-0.36	-0.42	-0.49	-0.52	-0.53	-0.51	-0.44	-0.35	-0.24	-0.11	0.02	0.15		counter-cyclical lead
HP 3200	59.51	-0.50	-0.52	-0.55	-0.58	-0.57	-0.54	-0.49	-0.41	-0.31	-0.19	-0.06	0.07	0.20		counter-cyclical lead
BP (1,5, 8 years)	58.81	0.08	-0.02	-0.14	-0.27	-0.39	-0.46	-0.48	-0.44	-0.37	-0.27	-0.16	-0.05	0.06		counter-cyclical lead
BP (1,5, 12 years)	58.13	-0.49	-0.56	-0.62	-0.68	-0.71	-0.71	-0.68	-0.61	-0.52	-0.40	-0.26	-0.12	0.03		counter-cyclical contemp
Average	57.78	-0.31	-0.34	-0.39	-0.45	-0.46	-0.45	-0.43	-0.36	-0.28	-0.18	-0.06	0.05	0.16		counter-cyclical lead

Note: nominal fiscal variables are deflated using AWM's GDP deflator.

Figure 1. The quarterly fiscal database: total government revenue (TOR) and expenditure (TOE)

Panel A. TOR. Smoothed and filtered estimates, not seasonally-adjusted (NSA, thick solid line), seasonally-adjusted SA, light solid line) and 95% confidence bands (dotted lines)



Panel B. TOE. Smoothed and filtered estimates, not seasonally-adjusted (NSA, thick solid line), seasonally-adjusted (SA, light solid line) and 95% confidence bands (dotted lines)

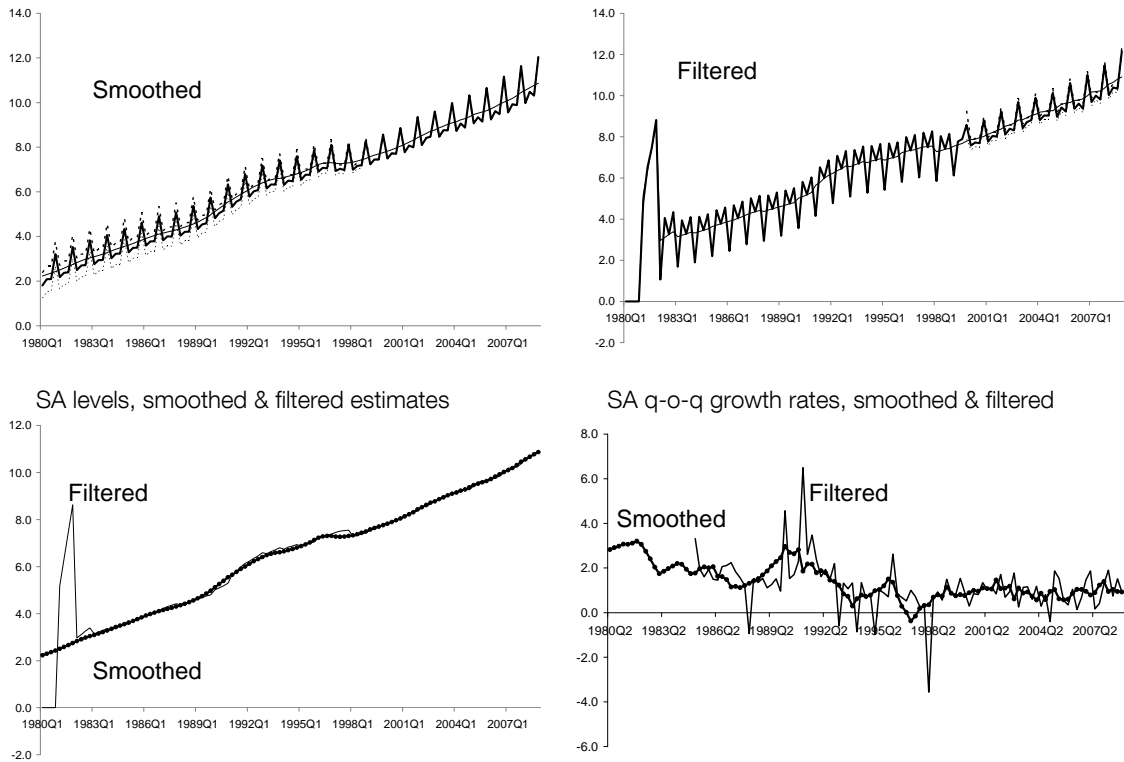


Figure 2. The quarterly fiscal database: total revenue and total revenue components (smoothed estimates). Quarter-on-quarter growth rates of seasonally-adjusted figures in nominal terms.

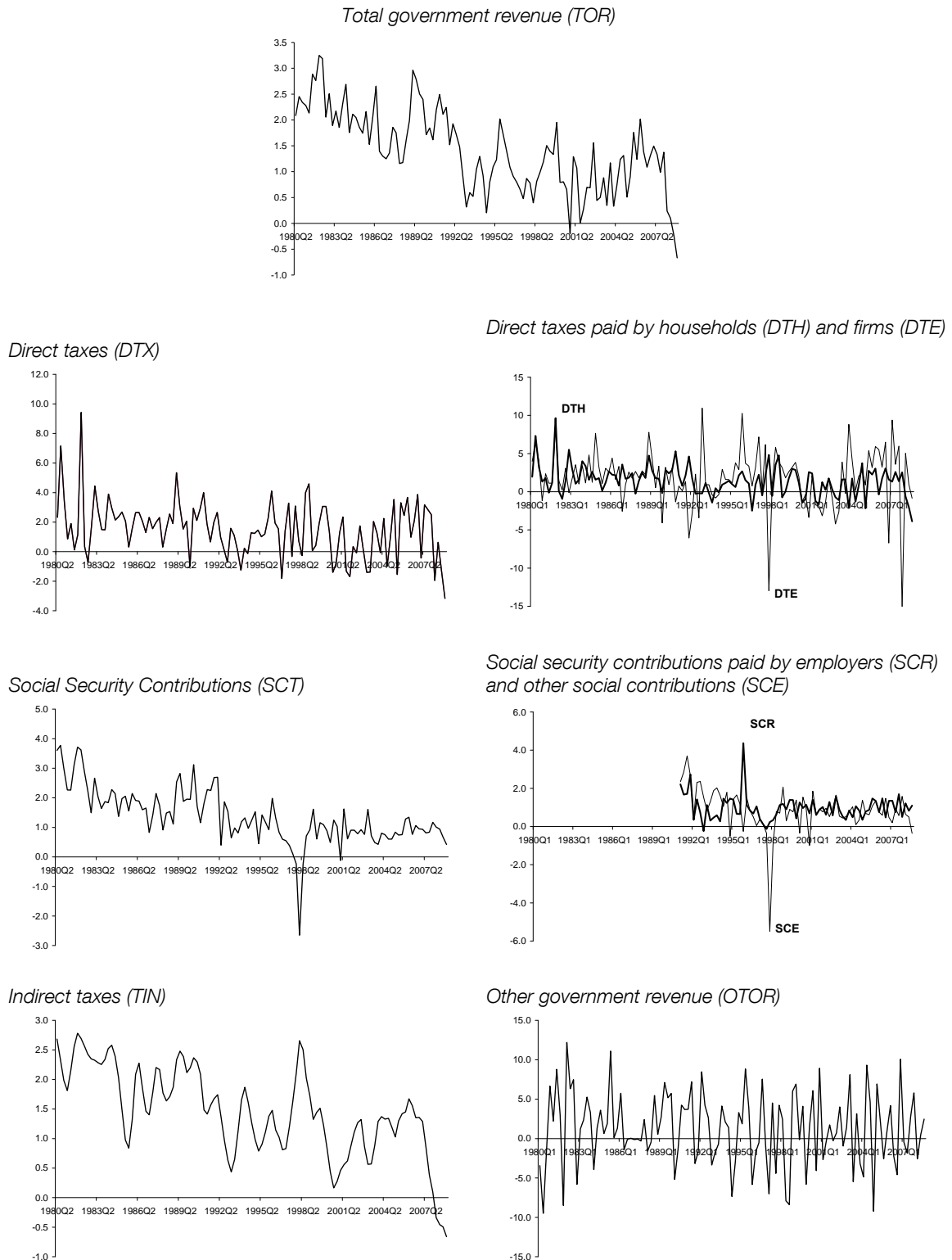
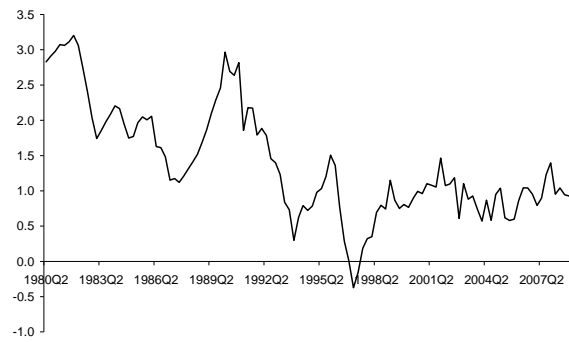
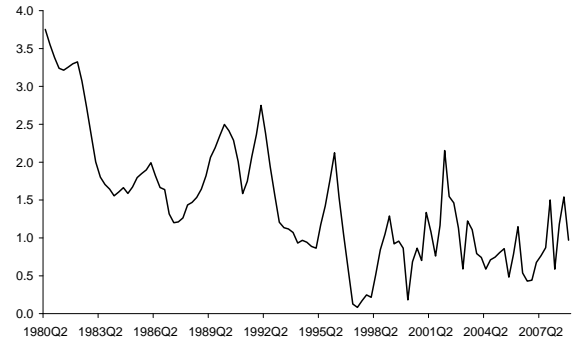


Figure 3. The quarterly fiscal database: total expenditure and total expenditure components (smoothed estimates). Quarter-on-quarter growth rates of seasonally-adjusted figures in nominal terms.

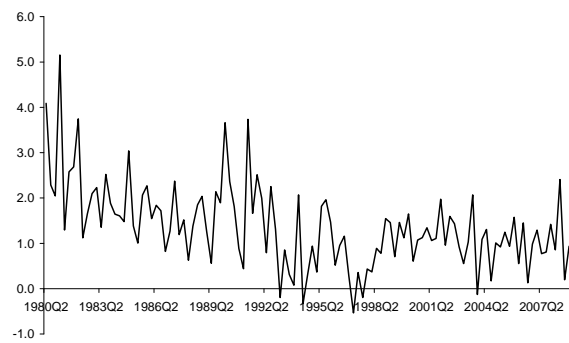
Total government expenditure (TOE)



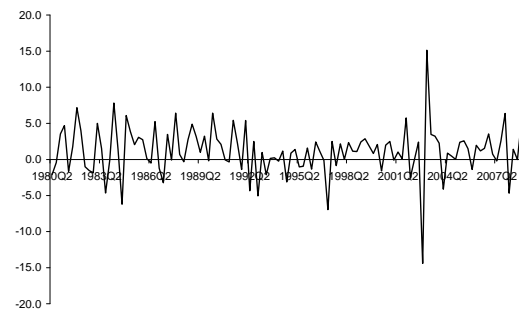
Transfers to households (THN)



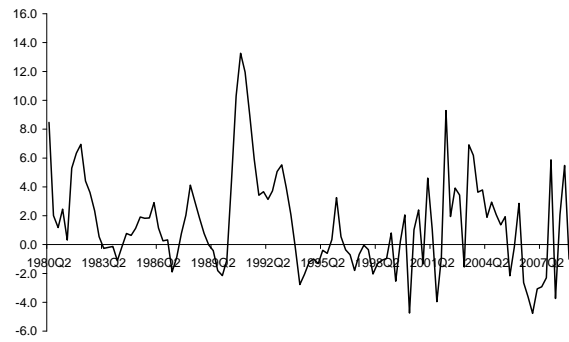
Government consumption (GCN)



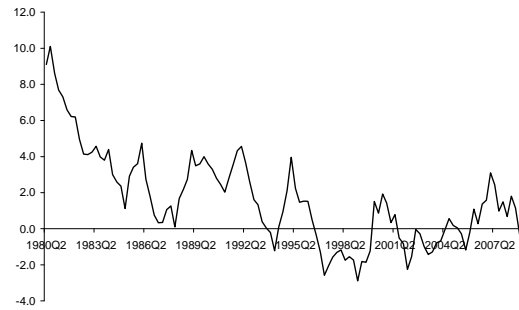
Government investment (GIN)



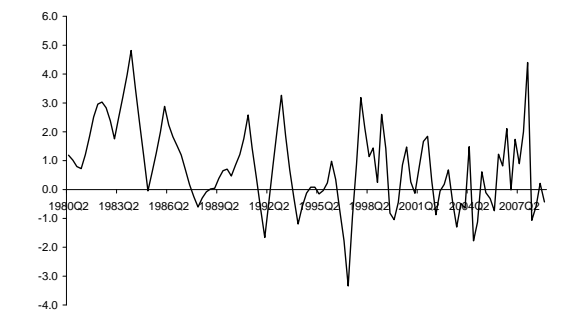
Unemployment benefits (UNB)



Interest payments (INP)



Subsidies (SIN)



Other total expenditure (OTOE)

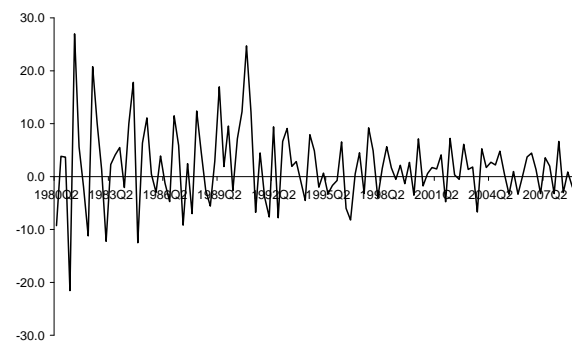
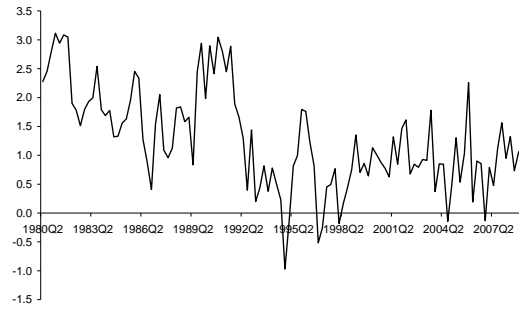
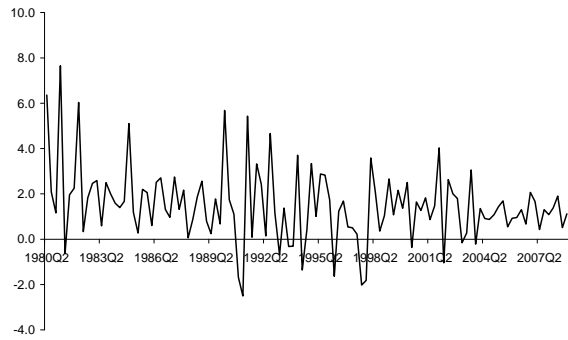


Figure 4. The quarterly fiscal database: decomposition of government consumption (smoothed estimates). Quarter-on-quarter growth rates of model-consistent seasonally-adjusted figures in nominal terms.

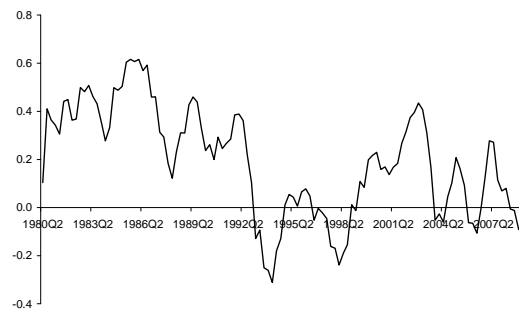
Compensation of employees (COE)



Non-wage government consumption (OGCN)



Government employment (LGN)



Real government consumption (GCR)

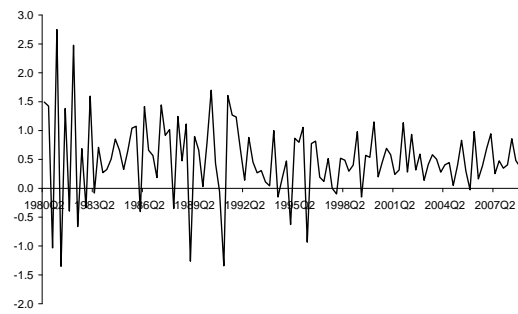
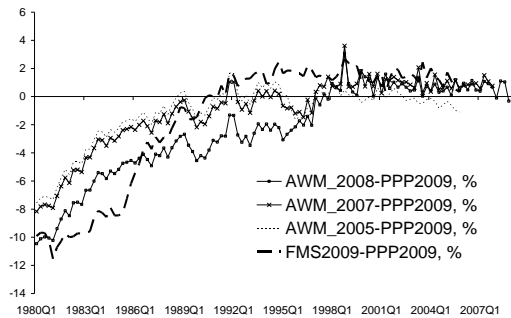
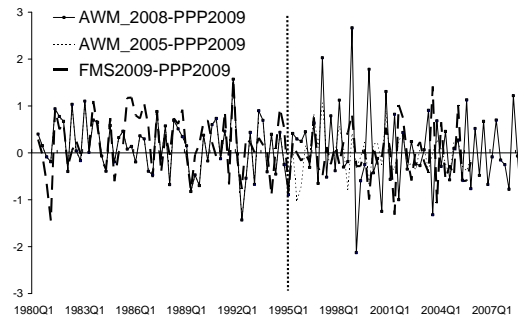


Figure 5. A comparative visual inspection regarding quarter-on-quarter growth rates of seasonally-adjusted series: quarterly database, AWM and database by Forni et al. (2009).

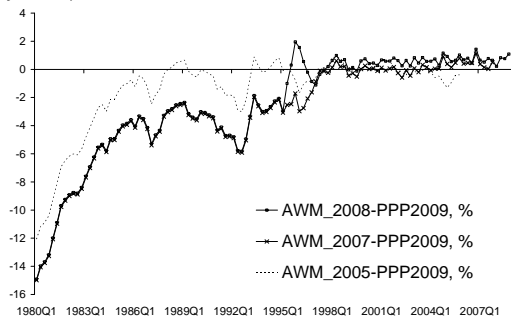
TOR: percentage differences in levels (not seasonally adjusted)



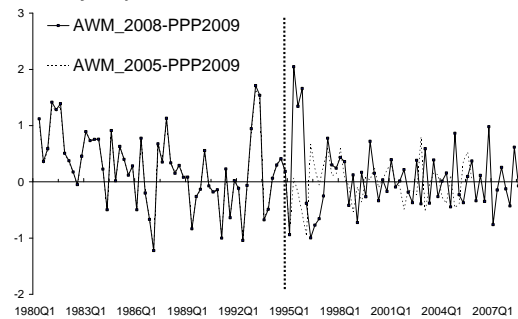
TOR: absolute differences in q-on-q growth rates of seasonally-adjusted series



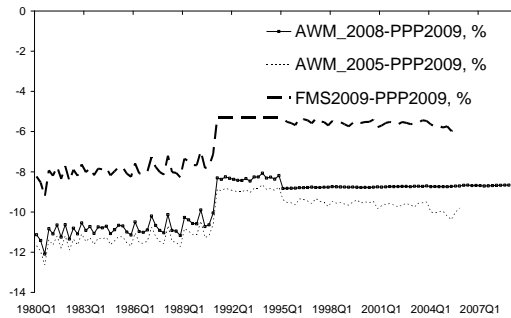
TOE: percentage differences in levels (not seasonally adjusted)



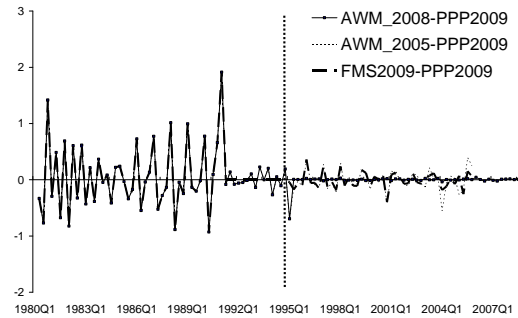
TOE: absolute differences in q-on-q growth rates of seasonally-adjusted series



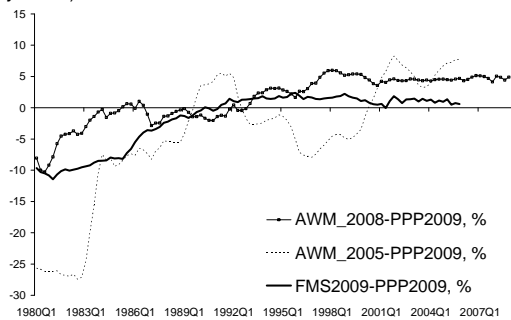
GCR: percentage differences in levels (not seasonally adjusted)



GCR: absolute differences in q-on-q growth rates of seasonally-adjusted series



THN: percentage differences in levels (not seasonally adjusted)



THN: absolute differences in q-on-q growth rates of seasonally-adjusted series

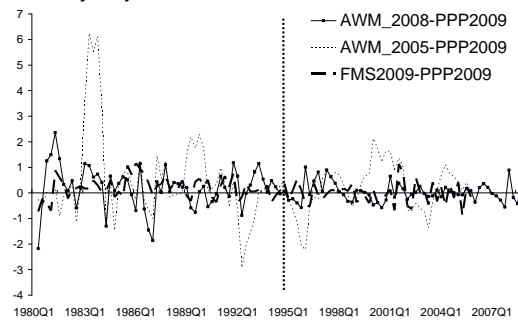
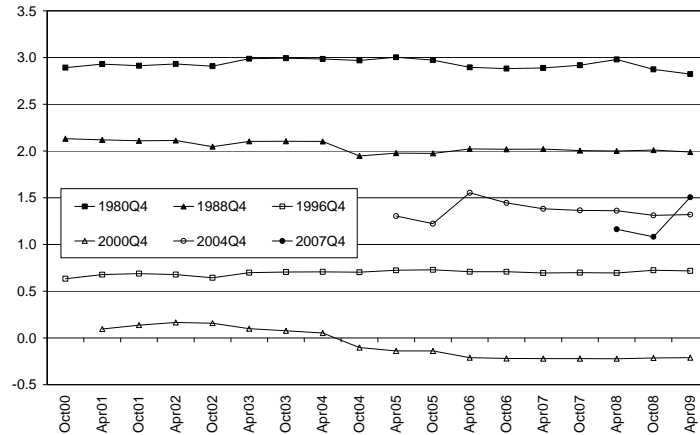


Figure 6. Some stylised facts of the real-time database: total government revenue (TOR)

Panel A. TOR: Evolution across vintages of quarter-on-quarter growth rates of seasonally-adjusted data for selected dates: 1980Q4, 1988Q4, 1996Q4, 2000Q4, 2004Q4, 2007Q4.



Panel B. TOR: average quarter-on-quat. growth rates of seasonally-adjusted data over four years

Period	Vintage																	
	Oct00	Apr01	Oct01	Apr02	Oct02	Apr03	Oct03	Apr04	Oct04	Apr05	Oct05	Apr06	Oct06	Apr07	Oct07	Apr08	Oct08	Apr09
1980Q1-1983Q4	2.59	2.61	2.61	2.61	2.59	2.63	2.63	2.63	2.64	2.64	2.63	2.60	2.59	2.59	2.61	2.62	2.59	2.57
1984Q1-1987Q4	1.83	1.83	1.83	1.83	1.84	1.83	1.83	1.83	1.84	1.84	1.84	1.83	1.83	1.83	1.83	1.83	1.83	1.83
1988Q1-1991Q4	2.03	2.03	2.03	2.03	2.02	2.03	2.03	2.03	2.01	2.01	2.01	2.02	2.02	2.02	2.01	2.02	2.02	2.01
1992Q1-1995Q4	1.12	1.12	1.12	1.12	1.13	1.12	1.12	1.12	1.11	1.12	1.11	1.12	1.12	1.12	1.12	1.12	1.12	1.12
1996Q1-1999Q4	-	-	-	-	-	-	-	-	1.06	1.06	1.06	1.07	1.05	1.05	1.05	1.05	1.05	1.05
2001Q1-2004Q4	-	-	-	-	-	-	-	-	-	0.81	0.76	0.78	0.79	0.78	0.79	0.79	0.79	0.79
2005Q1-2008Q1	-	-	-	-	-	-	-	-	-	-	-	-	-	-	-	-	1.20	1.19

Correlation of vintages with interpolated q-fiscal database (1980Q1 - latest available quarter)

Oct00	Apr01	Oct01	Apr02	Oct02	Apr03	Oct03	Apr04	Oct04	Apr05	Oct05	Apr06	Oct06	Apr07	Oct07	Apr08	Oct08	Apr09
0.95	0.96	0.96	0.95	0.95	0.95	0.95	0.95	0.96	0.96	0.96	0.96	0.97	0.97	0.97	0.96	0.98	0.98

Panel C. TOR: average year-on-year growth rates of not seasonally-adjusted data over four years

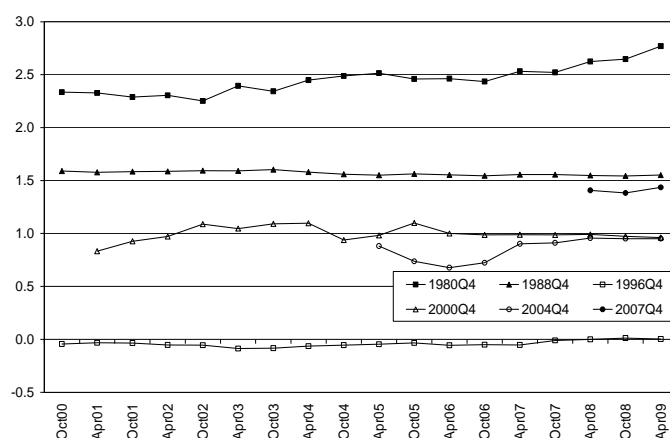
Period	Vintage																	
	Oct00	Apr01	Oct01	Apr02	Oct02	Apr03	Oct03	Apr04	Oct04	Apr05	Oct05	Apr06	Oct06	Apr07	Oct07	Apr08	Oct08	Apr09
1982Q2-1986Q1	9.23	9.22	9.21	9.22	9.21	9.21	9.21	9.21	9.66	9.67	9.64	9.64	9.64	9.62	9.62	9.61	9.62	9.63
1986Q2-1990Q1	7.50	7.49	7.50	7.49	7.51	7.50	7.50	7.50	7.67	7.67	7.67	7.68	7.71	7.70	7.70	7.69	7.71	7.72
1988Q1-1994Q1	6.61	6.61	6.61	6.62	6.62	6.61	6.61	6.61	6.75	6.72	6.71	6.71	6.70	6.70	6.70	6.71	6.68	6.68
1994Q2-1998Q1	4.15	4.14	4.10	4.11	4.15	4.13	4.12	4.12	4.13	4.16	4.15	4.12	4.10	4.09	4.09	4.09	4.10	4.10
1998Q2-2002Q1	-	-	-	3.74	3.70	3.77	3.78	3.81	3.80	3.79	3.82	3.85	3.80	3.80	3.81	3.80	3.80	3.80
2002Q2-2004Q1	-	-	-	-	-	-	-	2.90	2.87	2.97	2.91	2.88	2.86	2.87	2.88	2.87	2.87	2.87
2004Q4-2008Q3	-	-	-	-	-	-	-	-	-	-	-	-	-	-	-	-	4.62	4.66

Correlation of vintages with interpolated q-fiscal database (1980Q1 - latest available quarter)

Oct00	Apr01	Oct01	Apr02	Oct02	Apr03	Oct03	Apr04	Oct04	Apr05	Oct05	Apr06	Oct06	Apr07	Oct07	Apr08	Oct08	Apr09
0.88	0.88	0.88	0.89	0.89	0.90	0.90	0.90	0.98	0.98	0.98	0.98	0.98	0.98	0.98	0.98	0.99	0.99

Figure 7. Some stylised facts of the real-time database: total government expenditure (TOE)

Panel A. TOE: Evolution across vintages of quarter-on-quarter growth rates of seasonally-adjusted data for selected dates: 1980Q4, 1988Q4, 1996Q4, 2000Q4, 2004Q4, 2007Q4.



Panel B. TOE: average quarter-on-quat. growth rates of seasonally-adjusted data over four years

Period	Vintage																	
	Oct00	Apr01	Oct01	Apr02	Oct02	Apr03	Oct03	Apr04	Oct04	Apr05	Oct05	Apr06	Oct06	Apr07	Oct07	Apr08	Oct08	Apr09
1980Q1-1983Q4	2.38	2.38	2.37	2.37	2.36	2.40	2.38	2.42	2.43	2.43	2.42	2.42	2.41	2.44	2.43	2.46	2.47	2.51
1984Q1-1987Q4	1.72	1.72	1.72	1.72	1.72	1.73	1.73	1.72	1.72	1.72	1.72	1.72	1.72	1.72	1.72	1.72	1.72	1.72
1988Q1-1991Q4	2.08	2.08	2.08	2.08	2.08	2.08	2.08	2.08	2.08	2.08	2.08	2.08	2.08	2.08	2.08	2.08	2.08	2.08
1992Q1-1995Q4	1.12	1.12	1.12	1.12	1.13	1.13	1.13	1.13	1.12	1.12	1.12	1.12	1.12	1.12	1.12	1.11	1.11	1.11
1996Q1-1999Q4	-	-	-	-	-	-	-	-	0.53	0.53	0.53	0.53	0.52	0.52	0.52	0.52	0.52	0.53
2001Q1-2004Q4	-	-	-	-	-	-	-	-	-	0.97	0.90	0.91	0.92	0.94	0.94	0.95	0.96	0.96
2005Q1-2008Q1	-	-	-	-	-	-	-	-	-	-	-	-	-	-	-	-	-	0.90

Correlation of vintages with interpolated q-fiscal database (1980Q1 - latest available quarter)

Oct00	Apr01	Oct01	Apr02	Oct02	Apr03	Oct03	Apr04	Oct04	Apr05	Oct05	Apr06	Oct06	Apr07	Oct07	Apr08	Oct08	Apr09
0.94	0.95	0.95	0.94	0.93	0.94	0.93	0.94	0.95	0.95	0.95	0.95	0.95	0.96	0.95	0.95	0.96	0.96

Panel C. TOE: average year-on-year growth rates of not seasonally-adjusted data over four years

Period	Vintage																	
	Oct00	Apr01	Oct01	Apr02	Oct02	Apr03	Oct03	Apr04	Oct04	Apr05	Oct05	Apr06	Oct06	Apr07	Oct07	Apr08	Oct08	Apr09
1980Q1-1983Q4	10.15	10.15	10.11	10.13	10.07	10.21	10.15	10.27	10.48	10.50	10.45	10.46	10.44	10.53	10.52	10.62	10.65	10.79
1984Q1-1987Q4	7.39	7.39	7.39	7.39	7.39	7.39	7.39	7.39	7.53	7.53	7.53	7.53	7.53	7.53	7.53	7.53	7.53	7.53
1988Q1-1991Q4	8.43	8.43	8.43	8.43	8.43	8.43	8.43	8.43	8.50	8.50	8.50	8.50	8.50	8.50	8.49	8.50	8.50	8.50
1992Q1-1995Q4	4.60	4.60	4.60	4.60	4.60	4.60	4.60	4.60	4.63	4.63	4.63	4.63	4.63	4.63	4.63	4.63	4.63	4.63
1996Q1-1999Q4	-	-	-	-	-	-	-	-	2.46	2.46	2.47	2.47	2.42	2.42	2.43	2.42	2.42	2.42
2001Q1-2004Q4	-	-	-	-	-	-	-	-	-	3.91	3.74	3.78	3.81	3.81	3.83	3.87	3.88	3.88
2005Q1-2008Q1	-	-	-	-	-	-	-	-	-	-	-	-	-	-	-	-	-	3.48

Correlation of vintages with interpolated q-fiscal database (1980Q1 - latest available quarter)

Oct00	Apr01	Oct01	Apr02	Oct02	Apr03	Oct03	Apr04	Oct04	Apr05	Oct05	Apr06	Oct06	Apr07	Oct07	Apr08	Oct08	Apr09
0.94	0.95	0.94	0.94	0.94	0.94	0.94	0.95	0.98	0.98	0.98	0.98	0.98	0.98	0.98	0.99	0.99	0.99

BANCO DE ESPAÑA PUBLICATIONS

WORKING PAPERS¹

- 0821 GABRIEL JIMÉNEZ, JOSÉ A. LÓPEZ AND JESÚS SAURINA: Empirical analysis of corporate credit lines.
- 0822 RAMÓN MARÍA-DOLORES: Exchange rate pass-through in new Member States and candidate countries of the EU.
- 0823 IGNACIO HERNANDO, MARÍA J. NIETO AND LARRY D. WALL: Determinants of domestic and cross-border bank acquisitions in the European Union.
- 0824 JAMES COSTAIN AND ANTÓN NÁKOV: Price adjustments in a general model of state-dependent pricing.
- 0825 ALFREDO MARTÍN-OLIVER, VICENTE SALAS-FUMÁS AND JESÚS SAURINA: Search cost and price dispersion in vertically related markets: the case of bank loans and deposits.
- 0826 CARMEN BROTO: Inflation targeting in Latin America: Empirical analysis using GARCH models.
- 0827 RAMÓN MARÍA-DOLORES AND JESÚS VAZQUEZ: Term structure and the estimated monetary policy rule in the eurozone.
- 0828 MICHIEL VAN LEUVENSTEIJN, CHRISTOFFER KOK SØRENSEN, JACOB A. BIKKER AND ADRIAN VAN RIXTEL: Impact of bank competition on the interest rate pass-through in the euro area.
- 0829 CRISTINA BARCELÓ: The impact of alternative imputation methods on the measurement of income and wealth: Evidence from the Spanish survey of household finances.
- 0830 JAVIER ANDRÉS AND ÓSCAR ARCE: Banking competition, housing prices and macroeconomic stability.
- 0831 JAMES COSTAIN AND ANTÓN NÁKOV: Dynamics of the price distribution in a general model of state-dependent pricing.
- 0832 JUAN A. ROJAS: Social Security reform with imperfect substitution between less and more experienced workers.
- 0833 GABRIEL JIMÉNEZ, STEVEN ONGENA, JOSÉ LUIS PEYDRÓ AND JESÚS SAURINA: Hazardous times for monetary policy: What do twenty-three million bank loans say about the effects of monetary policy on credit risk-taking?
- 0834 ENRIQUE ALBEROLA AND JOSÉ MARÍA SERENA: Sovereign external assets and the resilience of global imbalances.
- 0835 AITOR LACUESTA, SERGIO PUENTE AND PILAR CUADRADO: Omitted variables in the measure of a labour quality index: the case of Spain.
- 0836 CHIARA COLUZZI, ANNALISA FERRANDO AND CARMEN MARTÍNEZ-CARRASCAL: Financing obstacles and growth: An analysis for euro area non-financial corporations.
- 0837 ÓSCAR ARCE, JOSÉ MANUEL CAMPA AND ÁNGEL GAVILÁN: asymmetric collateral requirements and output composition.
- 0838 ÁNGEL GAVILÁN AND JUAN A. ROJAS: Solving Portfolio Problems with the Smolyak-Parameterized Expectations Algorithm.
- 0901 PRAVEEN KUJAL AND JUAN RUIZ: International trade policy towards monopoly and oligopoly.
- 0902 CATIA BATISTA, AITOR LACUESTA AND PEDRO VICENTE: Micro evidence of the brain gain hypothesis: The case of Cape Verde.
- 0903 MARGARITA RUBIO: Fixed and variable-rate mortgages, business cycles and monetary policy.
- 0904 MARIO IZQUIERDO, AITOR LACUESTA AND RAQUEL VEGAS: Assimilation of immigrants in Spain: A longitudinal analysis.
- 0905 ÁNGEL ESTRADA: The mark-ups in the Spanish economy: international comparison and recent evolution.
- 0906 RICARDO GIMENO AND JOSÉ MANUEL MARQUÉS: Extraction of financial market expectations about inflation and interest rates from a liquid market.
- 0907 LAURA HOSPIDO: Job changes and individual-job specific wage dynamics.
- 0908 M.ª DE LOS LLANOS MATEA AND JUAN S. MORA: La evolución de la regulación del comercio minorista en España y sus implicaciones macroeconómicas.
- 0909 JAVIER MENCÍA AND ENRIQUE SENTANA: Multivariate location-scale mixtures of normals and mean-variance-skewness portfolio allocation.
- 0910 ALICIA GARCÍA-HERRERO, SERGIO GAVILÁ AND DANIEL SANTABÁRBARA: What explains the low profitability of Chinese banks?
- 0911 JAVIER MENCÍA: Assessing the risk-return trade-off in loans portfolios.
- 0912 MAXIMO CAMACHO AND GABRIEL PEREZ-QUIROS: Ñ-STING: España Short Term INDicator of Growth.
- 0913 RAQUEL VEGAS, ISABEL ARGIMÓN, MARTA BOTELLA AND CLARA I. GONZÁLEZ: Retirement behaviour and retirement incentives in Spain.

1. Previously published Working Papers are listed in the Banco de España publications catalogue.

- 0914 FEDERICO CINGANO, MARCO LEONARDI, JULIÁN MESSINA AND GIOVANNI PICA: The effect of employment protection legislation and financial market imperfections on investment: Evidence from a firm-level panel of EU countries.
- 0915 JOSÉ MANUEL CAMPA AND IGNACIO HERNANDO: Cash, access to credit, and value creation in M&As.
- 0916 MARGARITA RUBIO: Housing market heterogeneity in a monetary union.
- 0917 MAXIMO CAMACHO, GABRIEL PEREZ-QUIROS AND HUGO RODRÍGUEZ MENDIZÁBAL: High-growth Recoveries, Inventories and the Great Moderation.
- 0918 KAI CHRISTOFFEL, JAMES COSTAIN, GREGORY DE WALQUE, KEITH KUESTER, TOBIAS LINZERT, STEPHEN MILLARD AND OLIVIER PIERRARD: Wage, inflation and employment dynamics with labour market matching.
- 0919 JESÚS VÁZQUEZ, RAMÓN MARÍA-DOLORES AND JUAN-MIGUEL LONDOÑO: On the informational role of term structure in the U.S. monetary policy rule.
- 0920 PALOMA LÓPEZ-GARCÍA AND SERGIO PUENTE: What makes a high-growth firm? A probit analysis using Spanish firm-level data.
- 0921 FABIO CANOVA, MATTEO CICCARELLI AND EVA ORTEGA: Do institutional changes affect business cycles? Evidence from Europe.
- 0922 GALO NUÑO: Technology, convergence and business cycles.
- 0923 FRANCISCO DE CASTRO AND JOSÉ LUIS FERNÁNDEZ: The relationship between public and private saving in Spain: does Ricardian equivalence hold?
- 0924 GONZALO FERNÁNDEZ-DE-CÓRDOBA, JAVIER J. PÉREZ AND JOSÉ L. TORRES: Public and private sector wages interactions in a general equilibrium model.
- 0925 ÁNGEL ESTRADA AND JOSÉ MANUEL MONTERO: R&D investment and endogenous growth: a SVAR approach.
- 0926 JUANA ALEDO, FERNANDO GARCÍA-MARTÍNEZ AND JUAN M. MARÍN DIAZARAQUE: Firm-specific factors influencing the selection of accounting options provided by the IFRS: Empirical evidence from Spanish market.
- 0927 JAVIER ANDRÉS, SAMUEL HURTADO, EVA ORTEGA AND CARLOS THOMAS: Spain in the euro: a general equilibrium analysis.
- 0928 MAX GILLMAN AND ANTON NAKOV: Monetary effects on nominal oil prices.
- 0929 JAVIER MENCÍA AND ENRIQUE SENTANA: Distributional tests in multivariate dynamic models with Normal and Student *t* innovations.
- 0930 JOAN PAREDES, PABLO BURRIEL, FRANCISCO DE CASTRO, DANIEL GARROTE, ESTHER GORDO AND JAVIER J. PÉREZ: Fiscal policy shocks in the euro area and the US: an empirical assessment.
- 0931 TERESA LEAL, DIEGO J. PEDREGAL AND JAVIER J. PÉREZ: Short-term monitoring of the Spanish Government balance with mixed-frequencies models.
- 0932 ANTON NAKOV AND GALO NUÑO: *Oilgopoly*: a general equilibrium model of the oil-macroeconomy nexus.
- 0933 TERESA LEAL AND JAVIER J. PÉREZ: Análisis de las desviaciones presupuestarias aplicado al caso del presupuesto del Estado.
- 0934 JAVIER J. PÉREZ AND A. JESÚS SÁNCHEZ: Is there a signalling role for public wages? Evidence for the euro area based on macro data.
- 0935 JOAN PAREDES, DIEGO J. PEDREGAL AND JAVIER J. PÉREZ: A quarterly fiscal database for the euro area based on intra-annual fiscal information.