

# We are IntechOpen, the world's leading publisher of Open Access books Built by scientists, for scientists

**4,800**

Open access books available

**122,000**

International authors and editors

**135M**

Downloads

Our authors are among the

**154**

Countries delivered to

**TOP 1%**

most cited scientists

**12.2%**

Contributors from top 500 universities



**WEB OF SCIENCE™**

Selection of our books indexed in the Book Citation Index  
in Web of Science™ Core Collection (BKCI)

Interested in publishing with us?  
Contact [book.department@intechopen.com](mailto:book.department@intechopen.com)

Numbers displayed above are based on latest data collected.

For more information visit [www.intechopen.com](http://www.intechopen.com)



# Fly Ash as a Cementitious Material for Concrete

*Aissa Bouaissi, Long Yuan Li,*

*Mohd Mustafa Al Bakri Abdullah, Romisuhani Ahmad,*

*Rafiza Abdul Razak and Zarina Yahya*

## Abstract

This paper presents a review on fly ash as prime materials used for geopolymer. Due to its advantages of abundant resources, less in cost, great workability and high physical properties, fly ash leads to achieving high mechanical properties. Fly ash is considered as one of the largest generated industrial solid wastes or so-called industrial by-products, around the world particularly in China, India, and USA. The characteristics of fly ash allow it to be a geotechnical material to produce geopolymer cement or concrete as an alternative of ordinary Portland cement. Many efforts are made in this direction to formulate a suitable mix design of fly ash-based geopolymer by focusing on fly ash as the main prime material. The physical properties, chemical compositions, and chemical activation of fly ash are analyzed and evaluated in this review paper. Reference has been made to different ASTM, ACI standards, and other researches work in geopolymer area.

**Keywords:** fly ash, physical characteristics, specific gravity, particle shape, chemical activation, workability

## 1. Introduction

The production of ordinary Portland cement (OPC) contributes approximately 7% to the total of global greenhouse gas emissions; this is considered as a serious problem for the environment [1, 2]. Recently, much research has been done to explore an alternative product which could replace OPC. Geopolymer was firstly proposed by Davidovits [3] as an alternative binder to OPC. Geopolymer is defined as a chemical reaction of aluminosilicate compounds, which have geological origins, such as clay and metakaolin or from industrial by-products, for example, fly ash (FA) and ground-granulated blast furnace slag (GGBFS).

The collection of FA from the coal-fired power plants is based on different equipment and filtration processes. The source and the structure of burned coal significantly impacted on FA compounds. But, generally, all types of FA contain a huge amount of silicon dioxide ( $\text{SiO}_2$ ) (both amorphous and crystalline), aluminum oxide ( $\text{Al}_2\text{O}_3$ ), and calcium oxide ( $\text{CaO}$ ) [4]. The typical chemical composition of FA which is obtained from Manjung power plant at Perak in Malaysia is presented in **Table 1**. It is classified as class F fly ash, which will be detailed in the next section. FA with a high percentage of silica ( $\text{SiO}_2$ ) and alumina ( $\text{Al}_2\text{O}_3$ ) (more than 80%)

Composition	SiO <sub>2</sub>	Al <sub>2</sub> O <sub>3</sub>	Fe <sub>2</sub> O <sub>3</sub>	CaO	MgO	SO <sub>3</sub>	K <sub>2</sub> O	Na <sub>2</sub> O
Concentration %	43.73	27.8	12.37	8.01	3.75	1.45	1.96	0.93

**Table 1.**  
*Chemical compositions of FA [35].*

could be appropriate in the production of geopolymer as a raw material. According to Davidovits [3], geopolymers are classified as binder materials, which could be formed by the activation of aluminosilicate with alkaline solutions. The term “geopolymer” was first introduced by Davidovits and also well known as inorganic polymers or alkaline-activated binder material [4]. This review paper evaluates the significant characteristics of FA and its advantages as raw materials in geopolymer cement and concrete.

## 2. What is FA?

### 2.1 Classification

American Society for Testing and Materials (ASTM C618) [5] classified FA into two main classes based on the source of mineral coal; these categories are appropriately considered as important classes in the uses of concrete. The named class F and class C of FA have many similarities in terms of physical characteristics. However, a chemical composition analysis is required to distinguish between both classes. The total amount of silica (SiO<sub>2</sub>), alumina (Al<sub>2</sub>O<sub>3</sub>), and iron oxide (Fe<sub>2</sub>O<sub>3</sub>) as the constituents of FA will determine the type of class. Fly ash is therefore classified as class F if the silica, alumina, and iron oxide content is at least 70% of the total mass and has a limited percentage of calcium oxide (CaO) (content no more than 10%). Class C FA constitutes at least 50% of silica (SiO<sub>2</sub>), alumina (Al<sub>2</sub>O<sub>3</sub>), and iron oxide (Fe<sub>2</sub>O<sub>3</sub>) of the total mass and the calcium oxide (CaO) content is high (from 10 to 30%), with a high reactivity of almost all constituents [6].

Recently, many studies have been attempted in the analysis and synthesis of geopolymer. Some challenges have been faced in researching geopolymer process conditions and trying to identify the main aspects that limit and determine the reactivity of FA and geopolymers structure and its characteristics. FA-based geopolymer could be affected by many parameters [7, 8]; these parameters are significantly related to the primary materials and their characteristics, such as size and distribution of particles, the glassy phase in the content, the reactivity of both silicon and aluminum, constituent of iron, calcium and inert particles, and also the type of activator solution and its concentration.

Diaz et al. [9] supposed that the mechanical strength of geopolymer could be affected by many parameters of the mix design, for example, the ratio of NaOH to Na<sub>2</sub>SiO<sub>3</sub> and activator solution to FA ratio. In addition, other factors could have significant impact on the behavior of fresh and hardened geopolymer, such as the physical and chemical properties and also the crystallographic of FA.

Particle size of FA could have a significant impact on the strength development in two ways. Firstly, when the particles are up of 45 μm, this has an influence on the water requirement in an adverse way. Particles size has an important effect on the reaction rate of FA at early stages. Secondly, once diffusion and dissolution of materials occur in concentrated pastes, surface area of the particles might play a considerable role in determining the kinetics of different processes [6]. Salloum [10] concluded that, from a study of 36 different concrete mixtures, there was a relationship linked to the fineness of FA and strength development in concrete.

Due to the fineness of ash particles, the reactivity level increases, this could appear in the case of low-calcium ashes compared to those of higher in calcium content.

## 2.2 Physical characteristics

The performance of concrete is significantly impacted by the physical characteristics of FA; these characteristics could be the volume, rheology, and water content in the slurry, pore distribution, and also the reactivity of constituents. **Table 2** presents different standards of pulverized FA (PFA) and its uses in concrete [6].

Brahammaji and Muthyalu [11] claimed that, the production of an optimal properties of a geopolymer binder, class F fly ash should contain less than 5% of unburned material, no high than 10% of  $\text{Fe}_2\text{O}_3$  and lower in CaO content. Also the reactive silica amount should be between 40 and 50%, and 80 and 90% of particles should be smaller or in the range of 45  $\mu\text{m}$ . A high amount of CaO leads to produce higher compressive strength, due to the formation of calcium-aluminate-hydrate (C-A-H) at the early age. The other characteristics which could influence the suitability of FA as a source material for geopolymers are, amorphous content, this means the amount of  $\text{SiO}_2$ ,  $\text{Al}_2\text{O}_3$  and  $\text{Fe}_2\text{O}_3$  and also the morphology of FA. Other researchers [12] have reported that the amount of CaO + MgO could controls the characteristics of surface and the degree of progress of mortar and concrete carbonation. This occurs by providing anions and controls dosage requirements of water-reducing agents.

Sl no	Particulars	ASTM C618 Type F	BS 3892 Part 1	IS 3812
i	Particle density ( $\text{kg}/\text{m}^3$ , min)	Not specified	2000	Not specified
ii	Blaine fineness ( $\text{m}^2/\text{kg}$ )	Not specified	Not specified	320
iii	Retention on 45 $\mu\text{m}$ (325 mesh) sieve (% , max)	34.0	12.0	34.0
iv	Loss on ignition (% , max)	6.0	7.0	5.0
v	Water requirement (% of PC, max)	105	95	Not specified
vi	Moisture content (% , max)	3.0	0.5	2.0
vii	Soundness (autoclave, max)	0.8%	10 mm	0.8%
viii	Strength activity index (%) <sup>b</sup>	75	80	80
ix	$\text{SiO}_2 + \text{Al}_2\text{O}_3 + \text{Fe}_2\text{O}_3$ (% , min)	70	Not specified	70
x	$\text{SiO}_2$ (% , min)	Not specified	Not specified	35.0
xi	Reactive silica (% , min)	Not specified	Not specified	20.0
xii	CaO (% , max)	Not specified <sup>c</sup>	10.0	Not specified
xiii	MgO (% , max)	Not specified	Not specified	5.0
xiv	$\text{SO}_3$ (% , max)	5.0	2.0	3.0
xv	Alkalis as $\text{Na}_2\text{O}$ (% , max) <sup>d</sup>	1.5	Not specified	1.5
xvi	Total chlorides (% , max)	Not specified	0.10	0.05

<sup>a</sup>The individual standards may be referred for more details.

<sup>b</sup>The 28-day compressive strength ( $\text{N}/\text{mm}^2$ ) of blended cement mortar is expressed as the percent of that of the control Portland cement (PC) mortar. The ASTM standard for the purpose: ASTM C311, "Standard test methods for sampling and testing fly ash or natural pozzolans for use in Portland-cement concrete."

<sup>c</sup>Not specified but generally below 10% when FA is produced from burning of anthracite or bituminous coal.

<sup>d</sup>The equivalent alkali content, expressed as  $\text{Na}_2\text{O}$ , is obtained as:  $\text{Na}_2\text{O} + 0.658 \text{K}_2\text{O}$ .

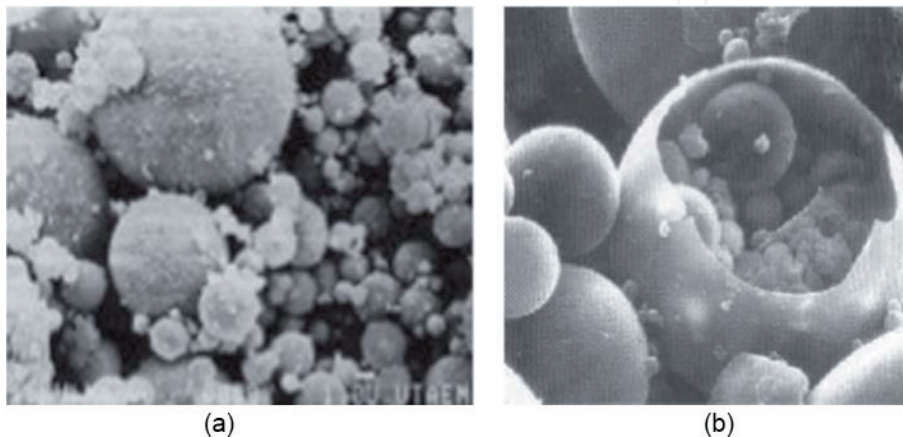
**Table 2.**  
 Comparison of some standards on PFA for use in concrete<sup>a</sup> [6].

### 2.2.1 Particle shape and form

Particle distribution and their size are considered the main physical factor for the geopolymerization process [13, 14]. Komljenovic et al. [15] stated that, the reactivity of FA increases with increasing its fineness, which leads to an improvement of geopolymer properties. Basically, the formation of ash particles occur during the condensation and liquefaction process of incombustible inorganic matter, which is remained after coal combustion [16–18]. The shape of FA particles depend on the combustion conditions and condensation process. In general, there are two major combustion processes. The first process occurs when the temperature ranges from 1204 to 1727°C, this process is called the pulverized coal firing system. The second process is known as fluidized bed combustion which could be peaked at temperature ranged between 827 and 927°C. Typically, the first process is the most common used one in the large thermal plants [19].

Surface tension of the melt plays a significant role in the formation of spheroidization of pulverized FA particles. Two types of particles could be formed, cenospheres, which are ash particles hollow from the inside, and plerospheres which are hollow ash particles but including smaller particles inside as is shown in **Figure 1**. Brouwers and Van Eijk [20] suggested that the formation of plerospheres is as a result of the cracking or puncturing of the primarily hollow particles during handling work, but not related to the melting process. Jayant reported that the shape and surface characterization of FA particles have an impact on concrete in terms of water demand, in particular at the desired slump stage [6]. The spherical forms of FA particles minimize interparticle friction and leads to the creation of a dynamic system between particles in a concrete. This process improves the flow properties of the concrete. An experimental study was carried out by Atiş et al. [21] on the properties of different types of FA. Their results showed that there are many similarities between the chemical and mineralogical composition of all types of FA and also the physical properties such as specific surface area, particle shape, and their distribution. To explain the performance of concrete from the strength and workability point of view, some authors proposed a new parameter called “shape factor” which is mainly based on the specific surface area of FA particles [6].

Another study shows that around 90% of tested FA could reduce water requirement of mortar mixtures. A correlation has been proposed to show the relationship between water demand and fineness and also water requirement and loss on ignition. Further, the addition of FA has a significant effect on the rheological properties of cement paste and workability of concrete, due to the small spherical particles of FA. Givi et al. [22] believed that the proportion of coarse material in the



**Figure 1.** Scanning electron microscope of FA: (a) cenosphere and (b) plerosphere particles [6].

ash usually (up to 45  $\mu\text{m}$ ) is mostly the main parameter affecting the workability of concrete. A study carried out by Feng and Clark [23] confirmed that the water requirement has been effected by both sieved residue and loss on ignition (LOI), where the LOI has impacted on water demand, due to the absorption of water molecules by porous carbon particles.

### 2.2.2 Particle-specific gravity

According to ASTM C188 [24], the specific gravity of FA particles can be determined by the same method that is used for hydraulic cement. If there is a water-soluble molecule in FA, it is recommended to use nonaqueous solvent as a replacement for water. ASTM C188 classified the specific gravity of various and common mineral admixtures such as FA, PC, and GGBFS as follows: 2.0–2.7, 3.0–3.20, and 2.9–3.0, respectively [6]. Sabat [25] assumed that FA could be the most suitable geotechnical material, due to its resistivity in terms of high shear strength, low specific gravity, less compressibility, and good physicochemical properties. FA mainly contains silica, alumina, iron, and calcium, with less quantities of magnesium, sulfur, sodium, potassium, and carbon. The density or specific gravity of FA depends on its chemical compounds and typically ranges between 1.9 and 2.8 [26].

### 2.2.3 Size and fineness of particle

As mentioned before, FA particles have spherical solid forms with hollowing inside as cenospheres or plerospheres form. FA particle sizes vary from 1  $\mu\text{m}$  to more than 100  $\mu\text{m}$ . In general, 10–30% of particles are larger than 45  $\mu\text{m}$ , with 300–500  $\text{m}^2/\text{kg}$  of surface area. However, some types of FA have low or high surface area between 200  $\text{m}^2/\text{kg}$  and 700  $\text{m}^2/\text{kg}$ , respectively [26]. There are two ways to measure the particle size and fineness of FA:

- Specific surface area by Blaine apparatus: this method is based on the time passing through a bed of FA and correlated with its specific surface area in  $\text{m}^2/\text{kg}$ .

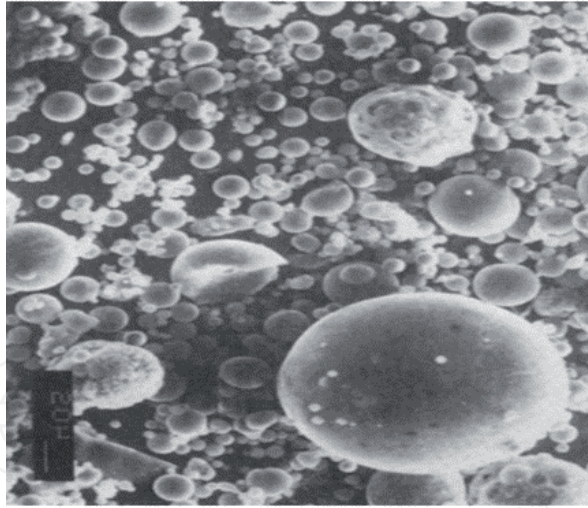
ASTM does not exaggerate any specific requirement for the surface area of FA, which could be used in concrete, whereas the Indian Standard IS 3812 Part 1 [27] specifies 320  $\text{m}^2/\text{kg}$  of FA as a minimum Blaine area for use in concrete.

- Residue on 45  $\mu\text{m}$  sieve by wet-sieve analysis: this method is used to measure the percentage of particles in FA bigger than 45  $\mu\text{m}$  as is referred to in ASTM430 [28]. Many countries follow this method for their national standards [6].

Some research showed that particles of raw FA mostly range from 1 to 100  $\mu\text{m}$  in **Figure 2**. The particles less than 10  $\mu\text{m}$  are the ones that react and contribute in the formation of early strength (7 and 28 days), whereas the particles between 10 and 45  $\mu\text{m}$  react slowly and lead to the formation of a late strength (up to 1 year). The particles higher than 45  $\mu\text{m}$  could be considered as inert and largely act as fine sand (filler) [6, 26].

### 2.2.4 Color

FA from bituminous coal has a darker gray color which comes from lignite or sub-bituminous coal and also can be buff to tan in color. It is thought that the gray color could be explained by the presence of unburned carbon (UBC). If the



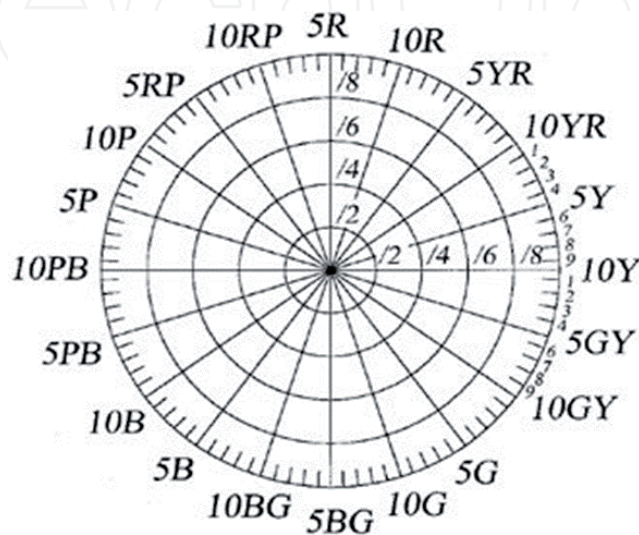
**Figure 2.**  
Scanning electron microscope (SEM) micrographs of fly ash particles [29].

percentage of carbon is low or absent in ash, then the color might be brown, due to the presence of iron (+3) compounds. The color changes to bluish gray to gray if the iron compounds are (+2) [6].

Tanosaki et al. [12] have reported the use of colorimetric methods or as is known as the Munsell system to identify colors by following the next three dimensions, hue, value (lightness), and chroma (color purity). In 1905, Professor Albert H. Munsell created the Munsell system. According to Malacara [30], **Figure 3**, describes the color circle system. The system is divided into five principle hues: red, yellow, green, blue, and purple, along with five intermediate hues halfway between adjacent principle hues. Each of these ten categories is used to divide into other ten sub-categories, so that 100 hues are given integer values.

### 2.2.5 Unburned carbon

Unburned carbon (UBC) is mostly the significant affecting particles on the loss on ignition (LOI). During hydration process the carbon particles do not have any part in the chemical reactions. However, they have an impact on the water requirement in concrete. Carbon particles have a very strong affinity and attraction to



**Figure 3.**  
Munsell color circle [30].

the organic chemical admixtures. For example, air-entraining agents (AEA) are a chemical agent that has absorbed on the carbon and negatively affects the hardened concrete. In general, the absorption degree depends on many factors, such as surface area and type of carbon in terms of its polarity and particle size. An experimental study showed that FA with less than 3–4% of carbon does not have a greater effect on the performance of organic chemical admixtures [6]. On the other hand, Ha et al. [31] reported that the use of FA as raw material, which contains around 8% of UBC, could accelerate the corrosion of reinforcement steel.

### 2.3 Chemical and mineralogical composition of FA

FA has varieties of chemical compositions; the averages of the main elements of FA in some European countries (France, UK, Germany), USA, and far Asian countries (Japan, China, India) are given as follows: 53.05%, 27.24, and 5.50% for  $\text{SiO}_2$ ,  $\text{Al}_2\text{O}_3$ , and  $\text{Fe}_2\text{O}_3$ , respectively [6]. However, another study [32] reported that FA consisted of a heterogeneous mixture of complex aluminosilicate glasses and other crystalline elements. The structure of aluminosilicate glass is an amorphous form, but it could be modified due to the addition of alkaline and metal oxides such as  $\text{Na}_2\text{O}$ ,  $\text{K}_2\text{O}$ ,  $\text{MgO}$ ,  $\text{CaO}$ , and  $\text{FeO}$ . A study carried out by Das and Yudhbir [33] showed that a strong correlation exists between the glass content and the ratio of potassium to aluminum oxides ( $\text{K}_2\text{O}/\text{Al}_2\text{O}_3$ ). ASTM classification shows that the composition of glass in class F fly ash is different from that in class C. A high polymerized glass network is observed in class F FA, but the glass matrix depolymerizes when the  $\text{CaO}$  increases in comparison with  $\text{Al}_2\text{O}_3$  content [6, 20, 34].

### 2.4 Setting time

The addition of FA or other raw material such as GGBFS generally delays the setting time of concrete. The initial and final setting time averages of class F and class C FA are 4:50, 4:40 and 6:45, and 6:15 (h:min), respectively. Setting time could be affected by different factors, for example, the amount of Portland cement, water demand, the reactivity of the pozzolan dosage or FA, and the temperature of concrete. Hot weather plays a positive effect on setting times and is considered as an advantage, by giving enough time for placing and finishing the handled work. On the other hand, if the weather is cold, setting time could be controlled by additives, which delay the finish operation. Some of accelerating admixtures and calcined shale or clay could be used to decrease setting time [26].

FA might have an influence on the rate of the hardening of cement [29, 36, 37] for the following reasons:

- FA is considered as cementitious and contains high calcium (class C FA).
- FA could contain sulfates which lead to a reaction with cement in the same way as when gypsum is added to Portland cement.
- The fly ash cement mortar might contain less water, and this has a significant effect on the rate of stiffening.
- The surface-active agent which could be added to modify the rheology (water reducers) of concrete could be absorbed by FA, and this leads to an influence on the stiffness of mortar.
- FA particles could act as nuclei for crystallization of cement hydration products.



## 2.5 Physical treatment

A study carried out by Barry [38] shows that the CSA (Canadian Standards Association) standard A23.5-M1982 on plant scale gets an advantage by improving the quality of using FA with high finer size of particles. The results showed an improvement in terms of reactivity and activity of FA, reducing water requirement and resulting in an enhanced ability to control alkali-aggregate reaction. It is observed that the particle size (or the particle surface area) and the size distribution have a significant role in determining the activity of FA. Therefore, FA with finer particle size could replace a high proportion of cement without affecting the strength [6].

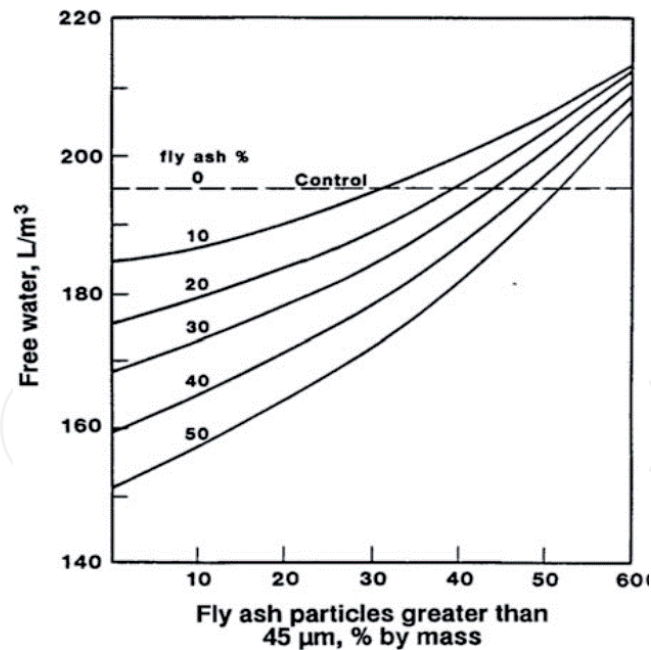
However, Ramezaniapour [29] and Adam [39] have performed more than 340 tests of 14 sources of FA. Their results showed that there is no correlation between fineness and compressive strength at the ages of 7 and 28 days for mortars, but a minor correlation was found at 90 days. Joshi [40] and Ravina [41] have exploited a new phenomenon which is called “particle size segregation phenomenon” electrostatic precipitators’ method was used to obtain FA fractions of different fineness from a particular source. Another experiment was carried out by Joshi [40] by investigating the proportion of particles of four types of FA, which are up to 45  $\mu\text{m}$  from a modern power plant. The retained percentages of 45  $\mu\text{m}$  sieve for each type of FA are 5, 16, 32, and 38%. The results indicated that replacing 10 and 20% of finer FA in concrete leads to develop a significant strength. These results have been supported by those found by Ravina [41] when the pozzolanic activity index of low-calcium FA from the same precipitator was used for testing.

## 2.6 Effect of FA on workability and water requirement

In general, rheological properties of cement pastes could be impacted by the morphology and the small size of the spherical particles of FA. The amount of calcium in FA particles (low calcium) has a significant influence on the rheology of pastes by reducing the amount of water demand and increasing workability. According to Davis et al. [42], FA is considered as a particular material comparing with other pozzolans by leading to the increased water requirement of concrete mixtures. Owens [43] believed that the main characteristic of FA, which has a significant effect on workability of concrete, is the proportion of coarse material (up to 45  $\mu\text{m}$ ) which could exist in FA. The effect of coarse particles on the water requirement is shown in **Figure 4**.

Much research has been carried out by Lloyd and Rangan [44] on the use of FA in geopolymer concrete. It is investigated that not only compressive strength could be affected by the characteristics of initial materials but also workability of geopolymer concrete. However, other studies [45] have shown that workability might be related to the ratio of alkaline activator solution (AAS) to binder and composition and nature of the chemical admixture which has been used.

Sathia et al. [46] have reported that the ratio of  $\text{H}_2\text{O}$  to  $\text{Na}_2\text{O}$  of 10–14 is only used when FA content is about 408  $\text{kg}/\text{m}^3$  in a designed concrete; this ratio could be changed depending on FA content. Thus, Siddique and Iqbal Khan [47] stated that for an equal w/c ratio and depending on the spherical shape and glassy phase on the FA particle surface, a greater workability could be achieved. Ramezaniapour [29] stated that, due to the necessity of mixing and placing concrete in a reinforced formwork, it is necessary to maintain its workability. This could be determined by the rheological properties of the system, which are in turn impacted by all the components. Thus, it is important to understand the rheological behavior and the main role of FA in the fresh concrete, which leads to exploit the potential role of FA for improving concrete.



**Figure 4.**  
*Influence of coarse-particulate content of FA on water requirement for equal workability in concrete [43].*

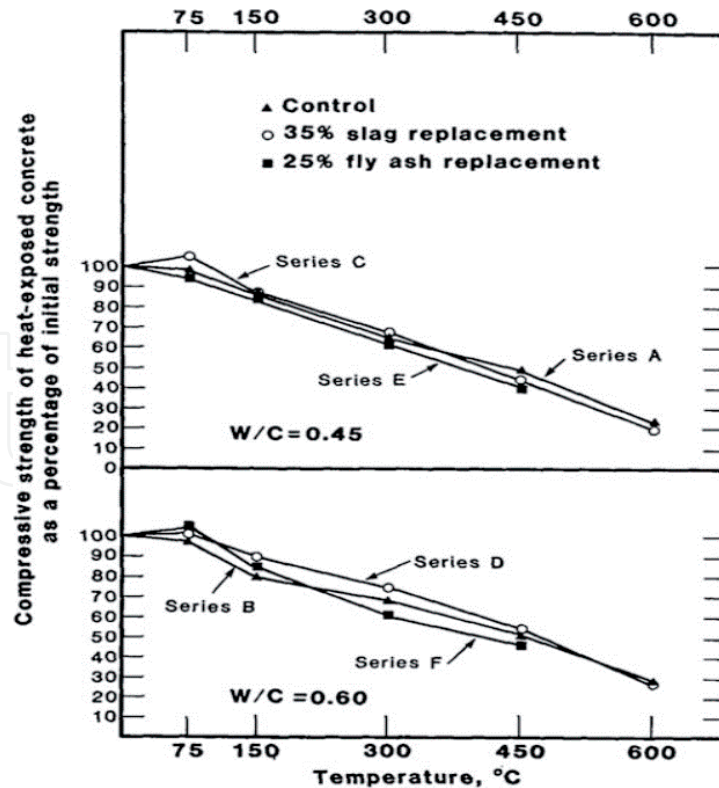
## 2.7 The impact of FA on durability of concrete exposed to elevated temperatures

Recently, the requirement of infrastructure and its development such as in nuclear reactor containment structures exaggerates the use of concrete, which could withstand high temperatures. Many researchers [48–50] have studied the effect of elevated temperature on FA concrete in the range of 230°C. Another study was carried out by Carette et al. [51] which showed the influence of a temperature 600°C on concrete with a mix of Portland cement, slag, and FA, as is illustrated in **Figure 5**. Under a high temperature, the addition of FA has no effect on the behavior of the concrete; however the changes in concrete properties or decreasing of strength could be observed at the same range of temperatures [37].

In addition, degradation of concrete structures is strongly affected by the chemical attack. For example, the penetration of chloride ions into the concrete leads to chemical reactions which could help in the formation of corrosion around reinforcement. This could be the reason of an early end to a structure's life cycle. Other studies that have been carried out by Thomas et al. [52] and Uddin and Shaikh [53] have reported that resistance of concrete to the immigration of chloride ions is mainly controlled by porosity and inter-connectivity of pores system and also depends to the chemical binding capacity of cement.

## 2.8 FA requirements for geopolymer

In order to achieve an efficient geopolymer synthesis, it is required that silica ( $\text{SiO}_2$ ), alumina ( $\text{Al}_2\text{O}_3$ ), and iron ( $\text{Fe}_2\text{O}_3$ ) should be in high proportions [54]. Further, the activity of FA or the formation of aluminosilicate gel is related to the nature of environment, which could be acidic or basic (Ferna and Deventer, 2007) [55], and also high concentration of calcium has an important effect on the reaction, by accelerating its rate. Nikolić et al. [56] reported that the reactivity of FA could be influenced by many factors which in turn affects the characteristics of FA-based geopolymer, such as glassy phase, particle size distribution, the presence of iron, calcium, and inert elements. However, the reactivity of FA is not dependent only on the glassy phase but on the whole FA; this means that the glassy phase has a limitation



**Figure 5.** Compressive strength of concretes after 1 month of exposure to various elevated temperatures [51].

degree. Therefore, the reactivity of FA usually depends on the dissolution level of FA in the alkaline activator. As aforementioned, loss on ignition (LOI) is defined as the unburned carbon present in FA and how that affects the quality of paste or concrete by increasing the water requirement and reducing the reactivity of pozzolanic constituents. ASTM C618 (2008) [39] has reported that the required percentage of LOI is limited to 6% maximum. Another study showed that a high proportion of  $\text{SO}_3$  in concrete could lead to instability in volume, which in turn has an impact on durability. However, it is reported that about 5% of  $\text{SO}_3$  of FA could be used as a concrete binder.

## 2.9 Chemical activation

Blanco et al. [57] have proposed a procedure of using of wet milling and leaching with sulfuric acid to activate FA. One of the main applications to use the activated FA is to substitute silica fume in concrete, which could lead to achieve a high strength, due to the decrease of pore size in the hardened concrete. The addition of a limited amount of sodium sulfate or potassium sulfate ( $\text{Na}_2\text{SO}_4$  or  $\text{K}_2\text{SO}_4$ ) mixed with calcium hydroxide ( $\text{Ca}(\text{OH})_2$ ) has a substantial effect on acceleration of hydration and compressive strength. A study carried out by Görhan and Kürklü [58] investigated that the activation of mortar samples by using NaOH of 6 M leads to increase in compressive strength values by 21.3 MPa and 22 MPa, compared to those samples which are activated by 9 M NaOH. Therefore, it has been reported by other authors [59, 60] that to achieve a great reactivity of FA particles within the activator solution, the liquid phase plays a significant role as a transport medium and a less smoothly gel is formed, due to the faster reaction of NaOH.

## 2.10 Addition of FA to cement and concrete

FA is classified into two classes by ASTM C618. Class F FA is pozzolanic, with minimum or no cementing value, whereas class C FA is cementitious as the same as

Characteristics	ASTM C618 FA
Type	ASTM class F and C
Shape and particles	Cenospheres, plerospheres, spherical particles
Specific gravity	2.0–2.7
Fineness	1–100 $\mu\text{m}$
Color	Darker gray buff to tan
LOI	Depends to the source
Mineral compositions	Rich in aluminosilicate, iron oxide, and calcium oxide
Thermal resistance	High resistance to elevated temperatures
Uses in concrete production	Improves concrete's strength and durability

**Table 3.**  
*FA characteristics.*

pozzolanic properties [5]. The main parameter to formulate a concrete mix design with the addition of FA is the proportion of the mix under consideration of the variation of water-cementitious ratio. This could lead to achieve the requirements for compressive strength at different ages, air content, and workability. ACI 211.1 or 211.2 has determined the procedures for the mix design in details, in terms of the proportioning of water, cement (or cement plus FA), and aggregate materials [61].

However, the specific gravity of FA is lower than PC, which needs to be taken into consideration in the mix proportioning process. Other standards such as the European standard BS EN206 provide some requirements for the use FA in concrete [6, 26, 62]. Further study has been carried out by Horpibulsuk et al. [63] which reported that FA could be considered as a dispersing material, when it is mixed with cement. This in contrast when FA is used in concrete as a pozzolanic material, where a pozzolanic reaction can be occurred by consuming of  $\text{Ca}(\text{OH})_2$  during the hydration process. **Table 3** summarizes the main physical and chemical characteristics of FA that can be referred to in any uses.

### 3. Conclusion

This chapter mainly reviews FA as basic raw materials, which can be introduced in the production of concretes so-called geopolymer concrete. As per several reports, a huge quantity of FA is disposed and landfilled. Besides, it has been estimated that the cement industry contributes approximately 7% of global warming, due to the substantial increase in carbon dioxide. The raw materials and the manufacturing process of the conventional cement are found to be the main reason behind this increase. As a solution for this serious environmental issue, much research has been conducted to investigate other alternative materials to Portland cement. FA is the most investigated material, due to its suitability and its physico-chemical properties including microstructure, reaction mechanism, and characterization as normalized by ASTM C618.

The chemical composition analysis shows that FA consists of a complex oxide mixture of aluminosilicate glasses and other crystalline elements with the presence of the amorphous phase. This latter explains the high reactivity of FA and its suitability as a mineral admixture for cement and concrete.

Numerous studies show that including FA in the production of geopolymers concrete provides a greater mechanical and microstructure properties, due to its physical characteristics compared to that given by OPC. These findings make the

use of FA of particular interest to researchers. As a result of the excellent properties, geopolymer-based FA has been successfully applied in various traditional and new applications. It is believed that the progress researches in geopolymers area especially in the utilization of industrial by-products have been intensified and consisted as a significant step to introduce geopolymers technology in the construction industry and particularly in marine applications.

## **Acknowledgements**

The authors would like to acknowledge the funding support from “Partnership for Research in Geopolymer Concrete” (H2020-MSCA-RISE-2015-689857-PRIGeoC) sponsored by the European Union and the Centre of Excellence Geopolymer & Green Technology (CeGeoGTech), Universiti Malaysia Perlis (UniMAP), in providing us this research opportunity and supporting us with all the necessary facilities.

## **Conflict of interest**

The authors declare no conflict of interest.

## **Nomenclature**

FA	fly ash
PFA	pulverized fly ash
ASTM	American Society for Testing and Materials
GGBFS	ground-granulated blast furnace slag
OPC	ordinary Portland cement
PC	Portland cement
CSA	Canadian Standards Association
AEA	air-entraining agents
UBC	unburned carbon
LOI	loss on ignition

IntechOpen

### Author details

Aissa Bouaissi<sup>1\*</sup>, Long Yuan Li<sup>1</sup>, Mohd Mustafa Al Bakri Abdullah<sup>2</sup>,  
Romisuhani Ahmad<sup>2</sup>, Rafiza Abdul Razak<sup>2</sup> and Zarina Yahya<sup>2</sup>

<sup>1</sup> School of Marine Science and Engineering, University of Plymouth,  
United Kingdom

<sup>2</sup> Center of Excellence Geopolymer and Green Technology (CEGeoGTech), School  
of Materials Engineering, Universiti Malaysia Perlis (UniMAP), Kangar, Perlis,  
Malaysia

\*Address all correspondence to: [aissabouaissi@yahoo.fr](mailto:aissabouaissi@yahoo.fr)

### IntechOpen

© 2020 The Author(s). Licensee IntechOpen. This chapter is distributed under the terms of the Creative Commons Attribution License (<http://creativecommons.org/licenses/by/3.0>), which permits unrestricted use, distribution, and reproduction in any medium, provided the original work is properly cited. 

## References

- [1] Neupane K. Fly ash and GGBFS based powder-activated geopolymer binders: A viable sustainable alternative of portland cement in concrete industry. *Mechanics of Materials*. 2016;**103**:110-122. DOI: 10.1016/j.mechmat.2016.09.012
- [2] Abdullah MMA, Kamarudin H, Nizar IK, Sandu AV, Binhussain M, Zarina Y, et al. Design, processing and characterization of fly ash-based geopolymers for lightweight concrete application. *Revista de Chimie (Bucharest)*. 2013;**64**(4):382-387
- [3] Davidovits J. Geopolymers: Inorganic polymeric new materials. *Journal of Thermal Analysis*. 1991;**37**:1633-1656
- [4] Pavithra P, Srinivasula Reddy M, Dinakar P, Hanumantha Rao B, Satpathy BK, Mohanty AN. A mix design procedure for geopolymer concrete with fly ash. *Journal of Cleaner Production*. 2016;**133**:117-125. DOI: 10.1016/j.jclepro.2016.05.041
- [5] ASTM. C618-08a: Specification for coal Fly ash and raw or Calcined natural Pozzolan for use in concrete. ASTM International. 2008. DOI: 10.1520/c0618-03
- [6] Jayant D. *Mineral Admixtures in Cement and Concrete*. Boca Raton, New York: Taylor & Francis Group, LLC, CRC Press; 2013
- [7] Fernández-Jiménez A, Palomo A, Criado M. Microstructure development of alkali-activated fly ash cement: A descriptive model. *Cement and Concrete Research*. 2005;**35**(6): 1204-1209
- [8] Hajimohammadi A, Provis JL, van Deventer JSJ. The effect of silica availability on the mechanism of geopolymerisation. *Cement and Concrete Research*. 2011;**41**(3):210-216. DOI: 10.1016/j.cemconres.2011.02.001
- [9] Diaz EI, Allouche EN, Eklund S. Factors affecting the suitability of fly ash as source material for geopolymers. *Fuel*. 2010;**89**(5):992-996. DOI: 10.1016/j.fuel.2009.09.012
- [10] Salloum T. Effect of Fly Ash Replacement on Alkali and Sulphate Resistance of Mortars. 2007. Available from: <https://spectrum.library.concordia.ca/975471/>
- [11] Brahammaji GSV, Muthyalu PV. A study on performance of fly ash based geopolymer concrete in chemical atmosphere. *International Journal of Advanced Engineering and Technology*. 2015;**8**(4):574-586
- [12] Tanosaki T, Yu Q, Nagataki S. Are fly shes green? In: *Proceedings of 2011 World of Coal Ash (WOCA) Conference, Denver, CO, USA; 9-12 May 2011*. pp. 1-5
- [13] Yahya Z, Abdullah MMA, Kamarudin H, Khairul NI, Sandu AV, Petrica V, et al. Chemical and physical characterization of boiler ash from palm oil industry waste for geopolymer composite. *Revista de Chimie*. 2013;**64**(12):32-34
- [14] Van Jaarsveld JGS, Van Deventer JSJ, Lukey GC. The characterisation of source materials in fly ash-based geopolymers. *Materials Letters*. 2003;**57**:1272-1280
- [15] Komljenović M, Bašćarević Z, Bradić V. Mechanical and microstructural properties of alkali-activated fly ash geopolymers. *Journal of Hazardous Materials*. 2010;**181**(1-3):35-42. DOI: 10.1016/j.jhazmat.2010.04.064
- [16] Van Riessen A, Chen-Tan N. Beneficiation of Collie fly ash for synthesis of geopolymer: Part

1—Beneficiation. *Fuel*. 2013;**106**:569-575. DOI: 10.1016/j.fuel.2012.11.070

[17] Marjanović N, Komljenović M, Bašćarević Z, Nikolić V. Improving reactivity of fly ash and properties of ensuing geopolymers through mechanical activation. *Construction and Building Materials*. 2014;**57**:151-162. DOI: 10.1016/j.conbuildmat.2014.01.095

[18] Nikolić V, Komljenović M, Marjanović N, Bašćarević Z, Petrović R. Lead immobilization by geopolymers based on mechanically activated fly ash. *Ceramics International*. 2014;**40**(6):8479-8488. DOI: 10.1016/j.ceramint.2014.01.059

[19] Komljenovic M, Bašć Z, Marjanovic N. The influence of fly ash characteristics and reaction conditions on strength and structure of geopolymers. *Construction and Building Materials*. 2015;**94**:361-370

[20] Brouwers HJH, Van Eijk RJ. Chemical Reaction of Fly Ash. 2003. pp. 11-16. Available from: <http://doc.utwente.nl/45282/1/Conference12.pdf>

[21] Atiş CD, Sevim UK, Özcan F, Bilim C, Karahan O, Tanrikulu AH, et al. Strength properties of roller compacted concrete containing a non-standard high calcium fly ash. *Materials Letters*. 2004;**58**(9):1446-1450. DOI: 10.1016/j.matlet.2003.10.007

[22] Givi AN, Rashid SA, Aziz FNA, Salleh MAM. Assessment of the effects of rice husk ash particle size on strength, water permeability and workability of binary blended concrete. *Construction and Building Materials*. 2010;**24**(11):2145-2150

[23] Feng X, Clark B. Evaluation of the physical and chemical properties of fly ash products for use in Portland cement concrete. In: 2011 World of Coal Ash Conference, Denver, CO, USA; 9 May 2011

[24] Ferdous MW, Kayali O, Khennane A. A detailed procedure of mix design for fly ash based geopolymer concrete. In: Fourth Asia-Pacific Conf FRP Struct (APFIS 2013). 2013. pp. 11-13

[25] Sabat AK. Prediction of maximum dry density and specific gravity of Fly ash using support vector machine. *EJGE*. 2015;**20**:155-166

[26] Malvar LJ, Cline GD, Burke DF, Rollings R, Greene J, Sherman TW. Alkali-Silica Reaction Mitigation: State-of-the-Art. Defense Technical Information Center; 2001. DOI: 10.21236/ada526563

[27] IS 3812 (Part 1): 2003 Indian Standard Pulverized Fuel Ash—Specification (Second Revision). 2003. p. 3812

[28] ASTM C430. Standard Test Method for Fineness of Hydraulic Cement by the 45-Mm (No. 325) Sieve. ed West Conshohocken: PA ASTM Int; 2003

[29] Ramezani-pour AA. Cement Replacement Materials. 2014. Available from: <http://link.springer.com/10.1007/978-3-642-36721-2>

[30] Malacara D. Color Vision and Colorimetry: Theory and Applications. 2nd ed. Bellingham, WA: SPIE; 2011. DOI: 10.1117/3.881172

[31] Ha T-H, Muralidharan S, Bae J-H, Ha Y-C, Lee H-G, Park KW, et al. Effect of unburnt carbon on the corrosion performance of fly ash cement mortar. *Construction and Building Materials*. 2005;**19**(7):509-515. DOI: 10.1016/j.conbuildmat.2005.01.005

[32] Bapat JD. Performance of cement concrete with mineral admixtures. *Advances in Cement Research*. 2001;**13**(4):139-155. DOI: 10.1680/adcr.13.4.139.39286



- [33] Das SK, Yudhbir. A simplified model for prediction of pozzolanic characteristics of fly ash, based on chemical composition. *Cement and Concrete Research*. 2006;**36**(10):1827-1832. DOI: 10.1016/j.cemconres.2006.02.020
- [34] Malhotra VM. *Fly Ash in Concrete*. Energy, Mines and Resources Canada. CANMET= Énergie, Mines et Ressources. 1986
- [35] Hamidi RM, Man Z, Azizli KA. Concentration of NaOH and the effect on the properties of fly ash based geopolymer. *Procedia Engineering*. 2016;**148**:189-193. DOI: 10.1016/j.proeng.2016.06.568
- [36] Chindaprasirt P, Jaturapitakkul C, Sinsiri T. Effect of fly ash fineness on microstructure of blended cement paste. *Construction and Building Materials*. 2007;**21**(7):1534-1541
- [37] Berry EE, Hemmings RT, Zhang MH, Malhotra VM, Bilodeau A, Carette GG. Investigation of high-volume fly ash concrete systems. In: Final Report. 1993
- [38] Barry EE. Beneficiated fly ash: Hydration, microstructure, and strength development in Portland cement systems. *Special Publication*. 1989;**114**:241-274
- [39] Adam AA. Strength and durability properties of alkali activated slag and fly ash-based geopolymer concrete [PhD thesis]. RMIT Univ; 2009
- [40] Joshi RC. Effect of coarse fraction of fly ash on concrete properties. In: *Proceedings of 6th International Symposium on Fly Ash Utilization*. 1982. pp. 52-82
- [41] Ravina D. Production and collection of fly ash for use in concrete. In: *Proc Symp Fly Ash Inc Hydrated Cem Syst Bost*. 1981. pp. 2-11
- [42] Davis RE, Carlson RW, Kelly JW, Davis HE. Properties of cements and concretes containing fly ash. *ACI Journal Proceedings*. 1 May 1937;**33**(5):577-612
- [43] Owens PL. Fly ash and its usage in concrete. *Journal of Concrete Society*. 1979;**13**(7):21-26
- [44] Lloyd N, Rangan BV. *Geopolymer concrete: A review of development and opportunities*. CipremierCom. 2010
- [45] Sabitha D, Dattatreya JK, Sakthivel N, Bhuvaneshwari M, Sathik SJ. Reactivity, workability and strength of potassium versus sodium-activated high volume fly ash-based geopolymers. *Current Science*. 10 Dec 2012. pp. 1320-1327
- [46] Sathia R, Babu Ganesh K, Santhanam M. Durability study of low calcium fly ash. In: *3rd ACF Int Conf 2008 D21*. 2008
- [47] Siddique R, Iqbal Khan M. *Fly Ash Supplementary Cementing Materials*. Berlin Heidelberg: Springer; 2011. pp. 1-66. DOI: 10.1007/978-3-642-17866-5\_1
- [48] Nasser KW, Marzouk HM. Properties of concrete made with sulfate resisting cement and fly ash. *Special Publication*. 1983;**79**:383-396
- [49] Nasser KW, Lohtia RP. Creep of mass concrete at high temperature. *ACI Journal of Proceedings*. 1971;**68**(4). DOI: 10.14359/11329
- [50] Nasser KW, Marzouk HM. Properties of mass concrete containing fly ash at high temperatures. *ACI Journal of Proceedings*. 1 Apr 1979;**76**(4):537-550
- [51] Carette GG, Painter KE, Malhotra VM. Sustained high temperature effect on concretes made with normal Portland cement, normal Portland cement and slag, or normal

Portland cement and fly ash. *Concrete International*. 1982;**4**(7):41-51

[52] Thomas C, Setién J, Polanco JA, Alaejos P, Sánchez De Juan M. Durability of recycled aggregate concrete. *Construction and Building Materials*. 2013;**40**:1054-1065. DOI: 10.1016/j.conbuildmat.2012.11.106

[53] Uddin F, Shaikh A. Mechanical and durability properties of fly ash geopolymer concrete containing recycled coarse aggregates. *International Journal of Sustainable Built Environment*. 2016;**5**(2):277-287. DOI: 10.1016/j.ijbsbe.2016.05.009

[54] Part WK, Ramli M, Cheah CB. An overview on the influence of various factors on the properties of geopolymer concrete derived from industrial by-products. *Construction and Building Materials*. 2015;**77**:370-395. DOI: 10.1016/j.conbuildmat.2014.12.065

[55] Duxson P, Fernández-Jiménez A, Provis JL, Lukey GC, Palomo A, van Deventer JSJ. Geopolymer technology: The current state of the art. *Journal of Materials Science*. 2006;**42**(9):2917-2933. DOI: 10.1007/s10853-006-0637-z

[56] Nikolić V, Komljenović M, Bašcarević Z, Marjanović N, Miladinović Z, Petrović R. The influence of fly ash characteristics and reaction conditions on strength and structure of geopolymers. *Construction and Building Materials*. 2015;**94**:361-370. DOI: 10.1016/j.conbuildmat.2015.07.014

[57] Blanco F, Garcia MP, Ayala J, Mayoral G, Garcia MA. The effect of mechanically and chemically activated fly ashes on mortar properties. *Fuel*. 2006;**85**(14-15):2018-2026. DOI: 10.1016/j.fuel.2006.03.031

[58] Görhan G, Kürklü G. The influence of the NaOH solution on the properties of the fly ash-based geopolymer mortar cured at different temperatures.

*Composites Part B: Engineering*. 2014;**58**:371-377. DOI: 10.1016/j.compositesb.2013.10.082

[59] Duchesne J, Duong L, Bostrom T, Frost R. Microstructure study of early in situ reaction of fly ash geopolymer observed by environmental scanning electron microscopy (ESEM). *Waste and Biomass Valorization*. 2010;**1**(3):367-377

[60] Abdullah MMA, Hussin K, Bnhussain M, Ismail KN, Ibrahim MW. Mechanism and chemical reaction of fly ash geopolymer cement—A review. *International Journal of Pure and Applied Sciences and Technology*. 2011;**6**(1):35-44

[61] Dixon DE, Prestrera JR, Burg GRU, Chairman SA, Abdun-Nur EA, Barton SG, et al. Standard practice for selecting proportions for Normal, heavyweight, and Mass Concrete (ACI 211.1-91). 1991

[62] Bouaissi A, Li LY, Moga LM, Sandu IG, Abdullah MMA, Sandu AV. A review on fly ash as a raw cementitious material for geopolymer concrete. *Revista de Chimie*. 2018;**69**(7):1661-1667

[63] Horpibulsuk S, Rachan R, Raksachon Y. Role of fly ash on strength and microstructure development in blended cement stabilized silty clay. *Soils and Foundations*. 2009;**49**(1):85-98