

Faculty Scholarship

2016

Check the Head: Emergency Ultrasound Diagnosis of Fetal Anencephaly

John W. Hall IV, BA
West Virginia University

Nicolas Denne MD
West Virginia University

Joseph J. Minardi MD
West Virginia University, jminardi@hsc.wvu.edu

Debra Williams MS
West Virginia University

BJ Balcik MD
West Virginia University

Follow this and additional works at: https://researchrepository.wvu.edu/faculty_publications



Part of the [Medicine and Health Sciences Commons](#)

Digital Commons Citation

Hall, John W. IV, BA; Denne, Nicolas MD; Minardi, Joseph J. MD; Williams, Debra MS; and Balcik, BJ MD, "Check the Head: Emergency Ultrasound Diagnosis of Fetal Anencephaly" (2016). *Faculty Scholarship*. 2007.

https://researchrepository.wvu.edu/faculty_publications/2007

This Article is brought to you for free and open access by The Research Repository @ WVU. It has been accepted for inclusion in Faculty Scholarship by an authorized administrator of The Research Repository @ WVU. For more information, please contact ian.harmon@mail.wvu.edu.

UC Irvine

Western Journal of Emergency Medicine: Integrating Emergency Care with Population Health

Title

Check the Head: Emergency Ultrasound Diagnosis of Fetal Anencephaly

Permalink

<https://escholarship.org/uc/item/8st5649j>

Journal

Western Journal of Emergency Medicine: Integrating Emergency Care with Population Health, 17(4)

ISSN

1936-900X

Authors

Hall IV, John W.
Denne, Nicolas
Minardi, Joseph J.
[et al.](#)

Publication Date

2016

DOI

10.5811/westjem.2016.5.30326

Supplemental Material

<https://escholarship.org/uc/item/8st5649j#supplemental>

License

[CC BY 4.0](#)

Peer reviewed

Check the Head: Emergency Ultrasound Diagnosis of Fetal Anencephaly

John W. Hall IV, BA
Nicolas Denne, MD
Joseph J. Minardi, MD
Debra Williams, MS
BJ Balcik, MD

West Virginia University School of Medicine, Department of Emergency
Medicine, Morgantown, West Virginia

Section Editor: Rick A. McPheeters, DO

Submission history: Submitted March 10, 2016; Revision received May 4, 2016; Accepted May 11, 2016

Electronically published July 5, 2016

Full text available through open access at http://escholarship.org/uc/uciem_westjem

DOI: 10.5811/westjem.2016.5.30326

Background

Early pregnancy complaints in emergency medicine are common. Emergency physicians (EP) increasingly employ ultrasound (US) in the evaluation of these complaints. As a result, it is likely that rare and important diagnoses will be encountered. We report a case of fetal anencephaly diagnosed by bedside emergency US in a patient presenting with first-trimester vaginal bleeding.

Case Report

A 33-year-old patient at 10 weeks gestation presented with vaginal bleeding. After initial history and physical examination, a bedside US was performed. The EP noted the abnormal appearance of the fetal cranium and anencephaly was suspected. This finding was confirmed by a consultative high-resolution fetal US. Making the diagnosis at the point of care allowed earlier detection and more comprehensive maternal counseling about pregnancy options. This particular patient underwent elective abortion which was able to be performed at an earlier gestation, thus decreasing maternal risk. If this diagnosis would not have been recognized by the EP at the point of care, it may not have been diagnosed until the second trimester, and lower-risk maternal options would not have been available. [West J Emerg Med. 2016;17(4)460-463.]

INTRODUCTION

Vaginal bleeding during pregnancy is a common complaint encountered by emergency physicians (EP) and one that can be anxiety inducing for patients and their families. Approximately 20%-40% of pregnant women will experience some amount of vaginal bleeding during their first 20 weeks.¹ Approximately 1.6% of all emergency department visits can be attributed to vaginal bleeding during early pregnancy. Most commonly, vaginal bleeding during early pregnancy can be attributed to ectopic pregnancy, threatened/complete/incomplete abortion, physiologic implantation of the pregnancy, or some uterine/cervical structural abnormality. EPs have been shown to be capable of accurately determining the presence of an intrauterine pregnancy using ultrasound (US), and ultrasound is commonly employed by EPs.

Early pregnancy complaints are common and can create

a diagnostic challenge for the EP. EPs are more commonly using point-of-care ultrasound (POCUS) to evaluate these and a multitude of other complaints. US has been shown to detect common etiologies of first-trimester bleeding;³ however, there are some uncommon and important diagnoses that, if recognized early, may have important implications in patient care. With the increasing use of US by EPs, it is likely these uncommon but important diagnoses will be encountered.⁴ We present a case of one of these uncommon anomalies, fetal anencephaly, in which POCUS led to earlier detection, less invasive management, and improved patient care.

CASE REPORT

A 33-year-old, pregnant woman at approximately 10 weeks gestation presented with mild vaginal bleeding of a few hours duration. She denied any prior bleeding or clots and

denied abdominal pain and cramping. There were no other abdominal or genitourinary symptoms. Past medical history was positive for polycystic ovarian disease and two previous spontaneous first trimester abortions.

Physical examination revealed a well-appearing female with normal abdominal and pelvic inspections. Pelvic exam revealed no blood in the vaginal vault and the cervical os was closed. Abdomen was non-tender, without rebound or guarding.

The differential diagnosis included ectopic pregnancy, spontaneous abortion, threatened abortion, inevitable abortion, septic abortion, gestational trophoblastic disease, and mechanical trauma.⁵

A POCUS was performed to confirm intra-uterine pregnancy and evaluate fetal viability. Initial transabdominal ultrasound revealed a single intrauterine pregnancy at approximately 10 weeks gestation. Fetal cardiac activity and movement were confirmed along with absence of hemorrhage or free fluid. Amniotic fluid volume was grossly adequate. During measurement of crown-rump length, the EP noted an

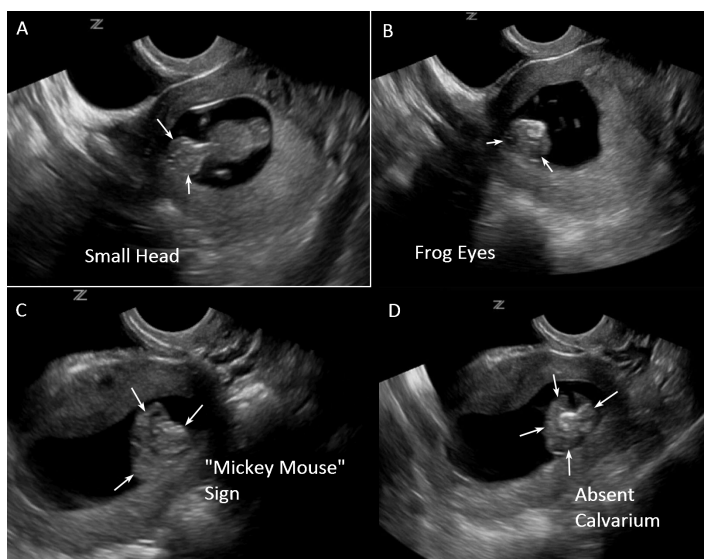


Figure 1A-D. **A.** Small head. Coronal axis view of the fetus demonstrating a smaller than expected fetal head (arrows). The fetal head is noticeably smaller than the torso. **B.** Frog Eye Sign. Coronal view of the fetal head demonstrating protruding orbital structures (arrows) consistent with the “frog eye sign” and anomalous development of the fetal cerebrum as seen in acrania-anencephaly. **C.** Mickey Mouse Sign. Coronal view of the head and neck demonstrating the “mickey mouse sign.” The two abnormal hemispheres (the ears) are noted without an associated cranial vault (arrows). **D.** Small head, absent cranium. Transverse view of the fetal head demonstrating an absence of the fetal cranium (arrows) with the cortex floating in the hypochoic amniotic fluid.

abnormal appearance of the fetal head. Transvaginal views were obtained to investigate further. Transvaginal ultrasound revealed more detailed findings that suggested fetal

anencephaly. The specific findings included a smaller than expected fetal head (as seen in Figure 1A), the “frog eye” sign and “Mickey Mouse” sign (as seen in Figures 1B and 1C, and Supplemental video), and absence of the fetal calvarium (as seen in Figure 1D, and Supplemental video).

Findings also included presence of the “Elvis Presley profile” (as seen in Figure 2A and Supplemental video) (credit Debra Williams, MS, RDMS, RVT, RT(R)). Compare these abnormal findings to a normal fetus where the head appears much larger with a larger, round, better-defined fetal cranium as seen in

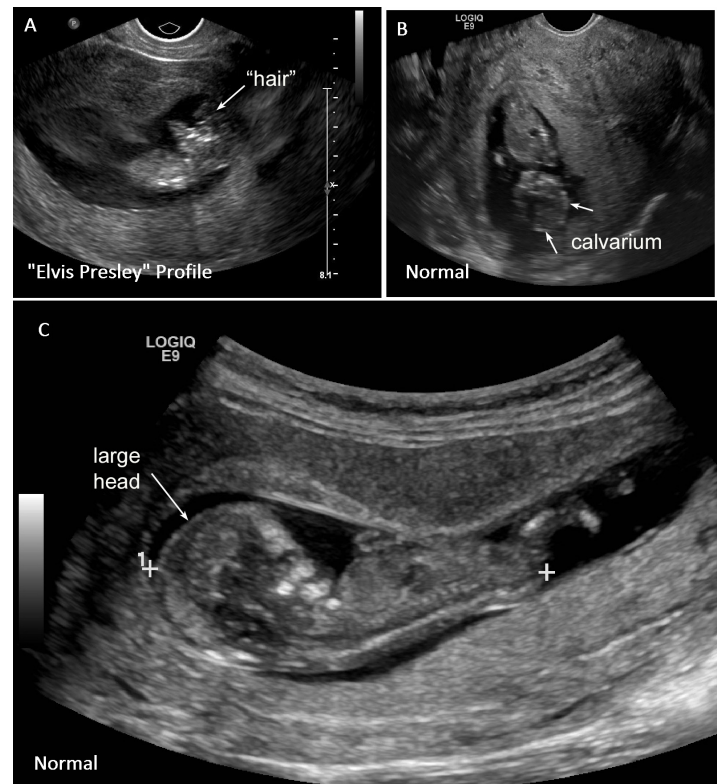


Figure 2A-C. **A.** Elvis Presley Profile. Longitudinal view of the fetus demonstrating the “Elvis Presley profile”. The cerebral hemisphere is jutting forward, giving the illusion of Elvis Presley’s hair (arrow). **B.** Normal comparison. Coronal view of a normal fetus developing appropriately. Image demonstrates a normally developing cranial vault, well defined calvarium (arrows), and cerebral structures. **C.** Normal comparison. Longitudinal view of fetus developing appropriately. Image demonstrates presence of the cranial vault and a large fetal head (arrow) that is larger than the torso.

Figures 2B and 2C (see also Supplemental video).

A short video clip detailing the common sonographic findings in anencephaly can be found in Supplemental video.

A consultative high-resolution fetal US confirmed the diagnosis, and obstetrics was consulted. The patient was counseled regarding pregnancy options. She elected for

pregnancy termination and underwent a subsequent dilation and evacuation procedure. Pregnancy termination at this early gestation was lower risk; if the diagnosis had been delayed, lower-risk options would not have been available.

DISCUSSION

In this case, an uncommon fetal anomaly, anencephaly, was discovered by the EP. Fetal anencephaly is believed to be a result of congenital lack of mesenchymal migration in the fourth week of gestation leading to absence of the calvarium and abnormal development of the cortical structures.⁶ The early recognition of this diagnosis allowed pregnancy decisions to be made earlier. The patient was able to be counseled, and lower-risk options for pregnancy termination, if desired, were available. EPs using POCUS to evaluate early pregnancy complaints should be aware of the appearance of fetal anencephaly. The sonographic findings are relatively straightforward and can be recognized during a brief routine evaluation. Early recognition of this diagnosis should improve patient care, specifically allowing earlier, lower-risk intervention if necessary.^{7,8,9}

Early pregnancy complaints are common in emergency medicine and primary care. General POCUS evaluation is typically performed to confirm intra-uterine pregnancy, evaluate for signs or risks of ectopic pregnancy, and to assess fetal viability. In addition, measurements of fetal gestational age and a gross assessment of amniotic fluid volume should be carried out. During this evaluation, a brief, focused anatomic survey should be performed to confirm a grossly normal appearance of the fetal head. The normal fetal head should be relatively large, nearly the size of the torso, with a rounded cranium and the eyes centered. These characteristics can usually be appreciated from approximately 10 weeks gestation forward and can be recognized by EPs with some experience in early pregnancy ultrasound.¹⁰ Evaluation of the fetus can be done rapidly.¹¹

In diagnosing fetal anencephaly using POCUS, a very important finding is absence of the fetal calvarium. Two diagnostic signs have been described to aid in diagnosis: the “Mickey Mouse” sign and the “frog eye” sign. The “Mickey Mouse” sign depicts the fetal cortex floating in the amniotic fluid without cranial structures above it, giving it the look of Mickey Mouse ears.⁷ The “frog eye” sign depicts the protruding orbital structures associated with anomalous development of the cortex seen in anencephaly-acrania.^{12,13} Other findings may include echogenic particles in the amniotic fluid consistent with fragmented cortex that occurs during the transition from acrania to anencephaly,^{14,15} polyhydramnios,¹⁶ and a crown-rump length falling below the fifth percentile.⁷

Ultrasound is the ideal imaging method for the early detection of fetal anomalies given its high diagnostic capacity, non-invasiveness, rapid detection, low cost, and availability.^{8,17}

Moreover, ultrasound offers the advantage of earlier detection beginning at 10 weeks gestation¹⁰ to allow more comprehensive parent counseling and earlier decisions regarding the future of the pregnancy.^{15,18,19,20} Early ultrasound may help to avoid additional imaging, multiple healthcare visits, and provide EPs with a rapid method to ascertain the etiology of early pregnancy complications.

Public concern regarding fetal cranial anomalies has increased in recent months with the emerging threat of the Zika virus. The Zika virus has been shown to cause fetal cranial abnormalities, specifically microcephaly.²¹ Zika virus is being identified more frequently in the United States and may carry with it an increased incidence of fetal cranial abnormalities.²² The World Health Organization (WHO) declared Zika virus a Public Health Emergency of International Concern (PHEIC) in February 2016.²³ Zika virus is an RNA flavivirus transmitted primarily through the *Aedes* spp. mosquito vector, although sexual transmission has also been documented.^{24,25} Officials in Brazil first noted an increase in the number of fetal microcephaly cases in late 2015, and have since demonstrated a 20-fold increase in the incidence of fetal microcephaly in areas where a known Zika virus outbreak was occurring.^{23,24,25} A similar retrospective study conducted in French Polynesia demonstrated a similar association during a Zika virus outbreak in 2013-2014.^{23,24,25} With the presence of Zika virus in South America and ease of international travel, we can expect to see rates of Zika virus infections in the US rise in the coming years.²⁵ In light of this emerging threat, it becomes increasingly important to recognize fetal cranial abnormalities early. As emergency physicians are on the front line of care for early pregnancy complaints, taking the time to quickly survey the fetal head during pregnancy POCUS can be an important step in early recognition of these abnormalities.

In summary, we report a case of anencephaly-acrania diagnosed by emergency POCUS in a pregnant female in her first trimester. To the authors’ knowledge, this diagnosis has not been reported in emergency medicine literature. Ultrasound is a rapid, cost-effective, noninvasive, accessible tool for the diagnosis of fetal abnormalities and the differentiation between specific diagnoses with regards to vaginal bleeding during the first trimester. Although the evaluation of complex fetal abnormalities is not part of routine emergency POCUS, routinely performing a brief survey to evaluate for a normal fetal head may allow early recognition of the important diagnosis of fetal anencephaly with subsequent benefits in patient care. In any unclear or concerning case, consultative ultrasound should be pursued as soon as feasible. Emergency physicians should have a low threshold for performing routine point-of-care ultrasound in pregnant women presenting with bleeding in early pregnancy.

Address for Correspondence: Joseph Minardi, MD, University of West Virginia School of Medicine, Department of Emergency Medicine, 1 Medical Center Dr, PO Box 9149, Morgantown, WV 26506. Email: jminardi@hsc.wvu.edu.

Conflicts of Interest: By the WestJEM article submission agreement, all authors are required to disclose all affiliations, funding sources and financial or management relationships that could be perceived as potential sources of bias. The authors disclosed none.

Copyright: © 2016 Hall et al. This is an open access article distributed in accordance with the terms of the Creative Commons Attribution (CC BY 4.0) License. See: <http://creativecommons.org/licenses/by/4.0/>

Video. Annotated and narrated clip demonstrating the common sonographic findings associated with acrania-anencephaly including a smaller than expected fetal head, the Frog Eye Sign, the Mickey Mouse Sign, and an absent fetal cranium.

REFERENCES

- Speert H and Guttmacher AF. Frequency and Significance of Bleeding in Early Pregnancy. *J Am Med Assoc.* 1954;155(8):712-5.
- Murtaza UI, Ortmann MJ, Mando-Vandrick J, et al. Management of First-Trimester Complications in the Emergency Department. *Am J Health Syst Pharm.* 2013;70(2):99-111.
- Dighe M, Cuevas C, Moshiri M, et al. Sonography in First Trimester Bleeding. *J Clin Ultrasound.* 2008;36(6):352-66.
- Greer V and Brosseit M. Obstetrics and Gynecology Ultrasound Topics in Emergency Medicine Resident Training. *DSJUOG.* 2014;8(1):35-43.
- Amin MU, Mahmood R, Nafees M, et al. Fetal Acrania – Prenatal Diagnosis and Imaging Features of Aborted Fetal Brain. *J Radiol Case Rep.* 2009;3(7):27-34.
- Cheng CC, Lee FK, Lin HW, et al. Diagnosis of fetal acrania during the first trimester nuchal translucency screening for Down syndrome. *Int J Gynaecol Obstet.* 2003;80:139–144.
- Campbell S, Johnstone F, Holt E, et al. Anencephaly: Early Ultrasonic Diagnosis And Active Management. *The Lancet.* 1972;1226-7.
- Isaksen C, Eik-Nes S, Blaas H, et al. (1998). Comparison of prenatal ultrasound and postmortem findings in fetuses and infants with central nervous system anomalies. *Ultrasound Obstet Gynecol.* 1998;11:246-53.
- Johnson SP, Sebire NJ, Snijders RJ, et al. Ultrasound Screening for Anencephaly at 10-14 Weeks of Gestation. *Ultrasound Obstet Gynecol.* 1997;9(1):14-6.
- McRae A, Edmonds M, Murray H. Diagnostic Accuracy and Clinical Utility of Emergency Department Targeted Ultrasonography in the Evaluation of First-Trimester Pelvic Pain and Bleeding: A Systematic Review. *CAJEM.* 2009;11(4):355-64.
- Sheiner E. Clinical Approach to Pregnancy-Related Bleeding. In: Bleeding During Pregnancy a Comprehensive Guide. New York: Springer; 2011.
- Chatzipapas I, Whitlow B, Economides D. The 'Mickey Mouse' sign and the diagnosis of anencephaly in early pregnancy. *Ultrasound Obstet Gynecol.* 1999;13:196-9.
- Eskey C. Case 64. In: *Neuroradiology Cases.* New York: Oxford University Press; 2012.
- Tonni G, Centini G, Bonasoni M, et al. Acrania-Anencephaly Associated with Hypospadias. Prenatal Ultrasound and MRI Diagnosis and Molecular Folate Metabolism Pathway Analysis. *Fetal Pediatr Pathol.* 2012;31:379-87.
- Cafici D and Sepulveda W. First-Trimester Echogenic Amniotic Fluid in the Acrania-Anencephaly Sequence. *J Ultrasound Med.* 2003;22:1075-9.
- Obeidi N, Russell N, Higgins J, et al. The Natural History of Anencephaly. *Prenat Diagn.* 2010;30:357-60.
- Nishi T and Nakano R. First-trimester diagnosis of exencephaly by transvaginal ultrasonography. *J Ultrasound Med.* 1994;13:149–51.
- Bianca S, Ingegnosi C, Auditore. et al. Prenatal and postnatal findings of acrania. *Arch Gynecol Obstet.* 2004;271:257-9.
- Cincore V, Ninios A, Pavlick J, et al. (2003). Prenatal diagnosis of acrania associated with amniotic band syndrome. *Obstet Gynecol.* 2003;102(5):1176-8.
- Cook R, Erdman J, Hevia M, et al. Prenatal management of anencephaly. *Int J Gynecol Obstet.* 2008;102:304-8.