



Economics Faculty Working Papers Series

Economics

2020

This Is "What's in Your Wallet" ... and Here's How You Use It

Tamás Briglevics

Scott Schuh

Follow this and additional works at: https://researchrepository.wvu.edu/econ_working-papers



Part of the Economics Commons

This Is “What’s in Your Wallet”...and Here’s How You Use It*

Tamás Briglevics[†]
Magyar Nemzeti Bank

Scott Schuh[‡]
West Virginia University

April 2020

Abstract

Consumer wallets have more means of payment yet cash still is used most. We develop a dynamic structural model blending cash inventory management and payment instrument choice. For each expenditure, consumers endogenously pay with cash, debit card, or credit card with an option to withdraw cash beforehand. The model is estimated with transaction-level data from a daily consumer payment diary and reveals that utility from payment services exceed cash management costs. For payment card owners, optimal cash holdings are about \$50 and jointly determined with the share of cash payments. Eliminating either cash or payment cards reduces consumer welfare significantly.

Keywords: Money demand; cash inventory management; payment demand; debit cards; credit cards; structural estimation; discrete-continuous choice; Diary of Consumer Payment Choice

JEL Classification: E41, E42, D12, D14

*The views expressed in this paper are those of the authors and do not necessarily represent the views of West Virginia University or Magyar Nemzeti Bank. For helpful comments and suggestions, we thank: Victor Aguirregabiria, Susanto Basu, Santiago Carbo-Valverde, Kim Huynh, Peter Ireland, Marc Rysman, Philipp Schmidt-Dengler, Zsolt Sándor; Judit Temesváry, and Randall Wright; participants at the ECB-BdF Retail Payments at a Crossroads Conference, Hungarian Academy of Sciences Summer Workshop, Econometric Society European and North American Meetings and World Congress, International Association for Applied Econometrics Annual Conference, International Industrial Organization Conference, the Bundesbank Cash Conference, Jornadas Economía Industrial; the Bank of Canada Retail Payments Conference; the WEAI Annual Conference; and seminar participants at the Bank of Canada, Boston College, and Federal Reserve Banks of Boston and Atlanta.

[†]*E-mail:* tbriglevics@gmail.com

[‡]*E-mail:* scott.schuh@mail.wvu.edu

1 Introduction

A popular advertising campaign for a U.S. bank asks, “What’s in *your* wallet?” For years the answer was “cash and checks,” plus maybe one credit card for high-income consumers. Today, U.S. consumer wallets are thick and diverse following a quarter-century transformation of payments from paper to cards and electronic means of payment.¹ Most consumers have five or six types of payment instruments; the average wallet holds nearly a dozen (two per type). Now, three-fourths of consumers have at least one credit card and the average consumer has 3-1/2. The average (median) wallet still has \$70 (\$30) of cash despite ardent efforts to eliminate it. For reasons not fully understood, consumers have adopted new instruments without discarding older ones.² And there is no representative wallet—more than 100 unique portfolios of instruments exist. Only one in seven consumers holds the most popular combination of cash, check, debit card, credit card, and two types of electronic bank payments.

One possible reason for thicker wallets is heterogeneous utility from payment services and no instrument emerging as “one size fits all.” U.S. consumers make about three-quarters of their payments (volume, not value) with cash, debit cards, and credit cards, mainly for retail and other low-value payments; consumers often turn to electronic instruments for bills and other higher-value payments (see Greene and Schuh 2017). Some consumers rely heavily on one type of payment card (debit, credit, or prepaid) for their card payments, a practice called “single-homing” by Rysman (2007) and Shy (2013). But scant few consumers single-home for all payments, and even less report never using cash (see Briglevics, Schuh, and Zhang 2016). Klee (2008) found that instrument choices are correlated with the dollar values of payments—cash for low values and debit or credit cards for higher values. Non-acceptance of payment instruments occurs, but it is too rare to explain the U.S. diversity choices. However, using new data from the Diary of Consumer Payment Choice (DCPC), we find the probability of cash use is roughly con-

¹This transformation is being measured by the Federal Reserve Payment Study and the Survey and Diary of Consumer Payment Choice from the Federal Reserve Bank of Atlanta. Unless noted otherwise, statistics cited in this paper are from Greene, Schuh, and Stavins (2016) and Greene and Schuh (2016).

²The exception is checks, which most consumers still have but are using less often. See Gerdes and Walton (2002), Benton et al. (2007), Schuh and Stavins (2010), and Gerdes et al. (2019).

stant around 50 percent for most payments (i.e., less than \$100) when consumers have sufficient cash in their wallets at the point of sale. Hence, the negative correlation between the probability of choosing cash and payment values depends on consumers' cash management policies. Thus, analyzing payment choices independently of cash holdings may lead to incorrect inferences about consumers' preferences for payment services.

Theoretical models generally have not kept pace with the remarkable scope of transformation in money and payments because two strands of literature have not been fully connected. One strand is the demand for money, where prototypical models of cash inventory management are Alvarez and Lippi (2009, 2017).³ This research includes a few means of payment—cash, debit cards, and credit cards—but the adoption, characteristics, and suitability for expenditure of payment instruments are not central to the problem. Instead, these models impose *a priori* temporal orderings on the use of assets and liabilities, which are not consistent with transactions-level data. The other strand is the demand for payment instruments, where a prototypical model is Koulayev et al. (2016).⁴ This research examines a wide range of payment instruments, modeling their adoption and use based on a rich array of instrument characteristics and payment conditions, including dollar value, that yield utility and influence endogenous choices at the point of sale. However, these models tend to be static, ignore cash inventory management, and abstract from consumption-saving and portfolio allocation decisions that are central to monetary models.

To better understand simultaneous demand for money and payments, we propose a dynamic optimizing model of consumers making daily cash management and payment choices that blends the theoretical approaches in the two literatures. As in monetary models, consumers manage cash inventories to fund current and future payments.⁵ As in payments models, agents endogenously choose an instrument for each transaction to

³Other research examining money demand with an option for credit payments includes Telyukova (2013), Briglevics and Schuh (2013), Fulford and Schuh (2017), and Alvarez and Argente (2019).

⁴Other research examining payment choice includes Schuh and Stavins (2010), Wakamori and Welte (2017) and Hunyh, Nicholls, and Shcherbakov (2019).

⁵Limited data availability prevents the inclusion of similar management tasks for other liquid assets and liabilities, such as checking accounts and credit card accounts. The potential benefits of doing so are illustrated in Samphantharak, Schuh, and Townsend (2018).

maximize utility from payment services. This way the model can replicate empirically observed orderings and substitution patterns among instruments across transaction values, and provide a framework for evaluating the relative importance of cash management costs and utility from payment services for consumer welfare.

The model is estimated with transactions-level longitudinal micro data that tracks each consumer payment and cash management decision. The data are from the DCPC, the U.S. version of daily diary surveys developed by central banks and other researchers to record consumer cash management and payment activity in industrial countries documented in Bagnall et al. (2016). In addition to capturing the richness of cash management and payment choices, diary surveys have less error than recall-based survey data used in previous research, and diaries provide relatively accurate estimates of aggregate consumer expenditures (see Schuh (2018)). Although the theoretical model does not yield closed-form solutions, its structural parameters can be estimated using the method described in Bajari, Benkard, and Levin (2007).

The estimated model reveals important insights that extend the cash demand and payment choice literatures. Two key conclusions emerge. First, the estimated model provides statistically and economically significant evidence that consumers jointly determine cash demand and payment choice, so models that focus on just one of these decisions are incomplete. Second, the estimated model reveals that utility gains from payment choices are about an order of magnitude larger than losses from cash management costs. In retrospect, the latter finding should not be surprising. The average U.S. consumer only makes five cash withdrawals per month but 59 payments, so opportunities to reap utility from optimal payment choices exceed the incidence of costs in managing cash.

Cash management in the estimated model is qualitatively similar to existing models with fixed or exogenous cash payments but now exhibits fluctuations in the share of cash payments due substitution among instruments. This feature leads to changes in the utility derived from payment services that are of comparable magnitude to changes in cash withdrawal or holding costs. Thus, the monetary literature's focus on cash management costs misses an important source of consumer welfare derived from the functioning of the

payment system.

Likewise, payments in the estimated model are qualitatively similar to existing models without cash management but instrument choice probabilities now depend on cash holdings and the random costs of withdrawals. The probability of cash use declines much faster with payment value when cash holdings are smaller because consumers try to postpone withdrawals until a favorable opportunity is available. Conversely, consumers with very large amounts of cash in their wallets are much *more likely* to use cash. We estimate the optimal cash holdings to be around \$50, so consumers with larger cash stocks will want to spend cash. Alvarez and Lippi (2017) describe this phenomenon as “cash burns” in a model where cash is assumed to be used first; our model exhibits this behavior when consumers are not constrained to order their use of assets and liabilities and consumers make optimal dynamic choices.

Finally, the structural model enables us to run counterfactual simulations of restrictions on payment choices at the point of sale. Most notably, decreases in utility stemming from eliminating (or not accepting) a single payment instrument are notably larger than changes in utility associated with changes in cash management costs. As a practical matter, cash still contributes significantly to consumer welfare despite criticisms and calls for its removal by Rogoff (2016) and others. However, eliminating both debit and credit cards would reduce utility by almost an order of magnitude more than any single instrument, reflecting the large value of technological innovations embodied in electronic card networks. These findings likely have implications for the operation of monetary and payment systems, and the public policies governing them.

2 Literature Review

This section provides a brief but overview of two literatures, monetary and payments, that are inherently related but remain largely disconnected. This paper is part of an emerging research program that is attempting to more fully integrate them.

2.1 Demand for Money and credit

Modeling money demand as the optimal solution of an inventory management problem has a long tradition in monetary economics starting with Allais (1947) and popularized by Baumol (1952) and Tobin (1956). The core objective of this problem, the minimization of opportunity and transactions costs, remains central to the current literature. Changes in transactions costs are most often specified as improvements in withdrawal technologies such as ATMs (for examples, see Lippi and Secchi 2009; Alvarez and Lippi 2009; Amromin and Chakravorti 2009). Opportunity costs arise from interest-differentials between liquid assets serving as a medium of exchange without bearing interest, like currency, and interest-bearing assets that cannot be used for payment.

The opportunity cost distinction has been evolving as the number of assets serving as a medium of exchange and the number bearing interest both have increased over time. Whitesell (1989) extended the Baumol-Tobin model to allow payments from currency and debitable (checkable) demand deposits that do not pay interest but have a fee differential. The elimination of Regulation Q in the early 1980s permitted interest payments on demand deposits, but still only about half of consumers have an interest-bearing checking account. Mulligan and Sala-i-Martin (2000) show that failure to adopt interest-bearing transaction accounts affects the interest-elasticity of money demand. Subsequent financial innovations increased the variety of interest-bearing liquid assets available to settle payments. For example, Ball (2012) and Lucas and Nicolini (2015) argue that money market deposit accounts (MMDA), which now are used as a medium of exchange, can be added to transactions balances to mitigate the historical destabilization of M1 velocity.⁶

Other theoretical approaches to modeling the demand for money go beyond the framework proposed in this paper. One approach is the shopping-time model in which money balances produce utility by saving time or energy in the shopping process (see McCallum and Goodfriend 1987), which is similar to a money-in-utility function specification. A related, but deeper, approach is search-theoretic models in the New Monetarist Economics (NME) tradition, which motivate demand for cash balances because they facilitate

⁶Also, Hester (1972) accurately predicted that money velocity would be affected by the introduction of electronic funds transfers (Automated Clearing House network).

exchange (see Lagos, Rocheteau, and Wright 2017).

Demand for transactions balances to fund consumer expenditures also includes short-term (revolving) credit. Sastry (1970), Bar-Ilan (1990), and Alvarez and Lippi (2017) offer models that allow consumers to pay with credit *after* they run out of cash. Microeconomic studies similar to this paper estimate more stable money demand by controlling for adoption of credit cards (Reynard 2004; Briglevics and Schuh 2013). Alternatively, studies like Townsend (1989), Telyukova and Wright (2008) and Telyukova (2013) offer NME style models in which consumers hold cash balances because they are unable to buy certain goods using credit. From this line of research, Chiu and Molico (2010) is closest to our work; their calibrated general equilibrium model features cash withdrawal decisions resulting from a stochastic dynamic optimization problem.

Models of demand for money and credit often assume a temporal ordering of use based on *a priori* beliefs about the relative costs and benefits—lowest net cost funds are used first—rather than allowing transaction-specific variation in net benefits. Strict temporal orderings of settlement funds are inconsistent with empirical evidence found in daily payment diaries where the choice of money or credit varies by transaction.⁷ NME models that allow non-acceptance of money or credit by sellers can generate alternating use of funds in environments where exchange opportunities and outcomes are random. But payment choices become more systematic when acceptance is universal or agents have foreknowledge of acceptance and preferences for household financial decisions, especially cash management.

Recent research has begun to address the need for transaction-specific endogenous demand for money and credit that may vary across types of consumers. For example, (Nosal and Rocheteau 2011, chapter 8) presents a tractable model in which consumers endogenously choose between credit and cash and can reset their cash holdings at a fixed cost. Fulford and Schuh (2017) build a model with endogenous payment choices that embodies the relative net benefits of money and credit and links them to consumption expenditures and debt accumulation. Following the model of Duca and Whitesell (1995),

⁷Table 1 in Huynh, Schmidt-Dengler, and Stix (2014) details the predictions of some models that are not borne out in Canadian and Austrian data.

Briglevics and Schuh (2013) find microeconomic evidence that demand for currency is less interest sensitive for credit card revolvers with high-interest debt than for convenience users who pay no interest on their credit card use.

In general, the monetary literature has abstracted from details about the choice of instrument used to authorize payment. Tobin (2008) defined payment instruments as “derivative media” linked to monetary assets (currency, demand deposits, etc.) and to liabilities (such as credit card limits). For currency, the instrument and asset are the same, but multiple instruments can be used to access demand deposits (checks, debit cards, prepaid cards, and online banking payments). Prescott and Weinberg (2003) show that non-pecuniary characteristics of payment instruments, such as communication and commitment, also can be important determinants of their use. This decision has become more complex as payment instruments once limited to demand deposits now can be used to make payments directly from more favorable liquid assets, like MMDAs, or from liquid liabilities, like a home equity line of credit (HELOC). And, of course, not all credit cards are alike in terms of their fees, rewards and rates paid to revolve balances—prompting a bank to ask which card is in our wallets. Thus, studying payment choices jointly with demand for money and credit may expand our ability to understand and explain the payments transformation and financial innovations in assets and liabilities.⁸

2.2 Demand for Payments

A key segment of the payments literature is modeling consumer demand for instruments to authorize retail payments.⁹ An early innovation is Stavins (2001), which investigated slow *adoption* of electronic payments methods by heterogeneous consumers using the

⁸The advent of new technologies such as e-money and mobile payments also may have similar implications. Recent technology has even altered the concept of “money” itself, with Bitcoin and M-PESA (Jack, Suri, and Townsend 2010) serving jointly as an electronic payment network and private money in the form of “virtual currency.” For extended definitions and discussions of “e-money,” see ECB (2012, 2015) and Committee on Payments and Market Infrastructure and Markets Committee (2018).

⁹Research on supply of payment services—provision of payment networks and the acceptance of payment instruments by merchants—also is important in general equilibrium. Humphrey, Kim, and Vale (2001) argue that adoption of electronic methods lowers the social costs of payment systems. See Hunyh, Nicholls, and Shcherbakov (2019) for an estimated model of merchant acceptance. We exclude this part of the literature because it goes beyond the scope of our partial equilibrium consumer model, and because acceptance is not measured well in the DCPC.

limited data on payments in the Survey of Consumer Finances. Subsequent research by Borzekowski, Kiser, and Ahmed (2008) and Schuh and Stavins (2010), as well as references therein, also modeled the *use* of payment instruments (number of payments) as a function of technology and instrument-specific characteristics like cost, convenience, security, and record-keeping using better-suited recall-based survey data. This research relies on two-step discrete-continuous models of adoption and use of individual payment instruments. Koulayev et al. (2016) extended this approach by simultaneously modeling adoption of a bundle of instruments (the wallet), and including random utility from the use of payment instruments in various payment contexts. This model focuses primarily on costs and benefits of instruments used to make heterogeneous payments by a cross-section of consumers, but abstracts from consumer demand for money and credit needed to settle payments.

An alternative approach is to model consumer demand for payments at the point of sale (POS) over time. Starting with Klee (2008), and followed by Cohen and Rysman (2013) and Wang and Wolman (2016), researchers used scanner data from retail stores to document instrument choices at checkout to estimate multinomial logit models. These studies found notable correlation between the dollar values of individual transactions and the choice of payment instruments, with cash being far more likely to be used for payments of small dollar values.¹⁰ This result added a new perspective unavailable from survey data, which generally do not contain individual payments or dollar values. However, except for Cohen and Rysman (2013), scanner data do not provide information about the demographics of each consumer, their options at the time of payment (cash in their wallet or instrument adoption), or the longitudinal behavior of individual consumers. In particular, scanner data do not reveal single-homing behavior by individual consumers (see Rysman 2007; Shy 2013), which (Briglevics, Schuh, and Zhang 2016) show is obscured by the aggregate correlation between payment values and instrument choices across all consumers.

¹⁰Arango, Hogg, and Lee (2015), Eschelbach and Schmidt (2013), Briglevics and Schuh (2014), and Huynh, Schmidt-Dengler, and Stix (2014) also provide evidence that cash holdings are correlated with payment instrument choices.

Shortcomings of recall-based surveys and scanner data motivated development of daily consumer payment diaries used in the cross-country study by Bagnall et al. (2016). In real time, payment diaries track the dollar value of each transaction, the payment instrument used, and information about the consumer and merchant involved in each payment.¹¹ Recent research uses payment diary data to estimate POS choice probability models for various countries and non-retail transactions.¹² Wakamori and Welte (2017) extended this research using the Canadian data to estimate a random coefficients model where not all respondents switch from cash to a debit or credit card at the same transaction value. They found the dominance of cash for low-value transactions is primarily driven by consumer preferences for cash. A limitation of econometric models applied to diary data thus far is they are not derived from a dynamic optimizing framework for consumers' joint payment and cash management choices that provides cash-flow accounting of money holdings (stock) and payments, withdrawals, and deposits (flows).

2.3 Joint demand for money, credit, and payments

The unique role of payment instruments offers the potential to better connect demand for money and credit, on one hand, with the demand for specific consumer expenditures. An early example is Prescott (1987), which enhances cash-in-advance constraints by jointly modeling the choice of payment instruments (currency and interest-bearing bank drafts). Fulford and Schuh (2017) jointly models credit card spending, revolving debt, and payments settled with money over the life-cycle. Alvarez and Argente (2019) models the cash-credit card tradeoff for consumers paying for Uber rides. And Stokey (2019) develops an extensive general equilibrium model that includes banks and a monetary authority to assess the macroeconomic impact of payment choices. In each case, however, the models only determine the aggregate shares of expenditures and funding paid for with each

¹¹Cohen and Rysman (2013) resolved the scanner data anonymity problem by surveying participating consumers and asking them to re-scan their products. This strategy produces data similar to a payment diary but requires *ex post* recall of real-time POS conditions.

¹²See Fung, Huynh, and Sabetti (2012) and Arango, Hogg, and Lee (2015) for Canada; van der Cruijssen, Hernandez, and Jonker (2015) for The Netherlands; Bounie and Bouhdaoui (2012) for France; von Kalckreuth, Schmidt, and Stix (2009) and Eschelbach and Schmidt (2013) for Germany, and Briglevics and Schuh (2014) for the United States.

instrument type during a period of time, not the choice of payment instrument and settlement funds for individual payment opportunities.

The model proposed in this paper models each sequential payment choice for individual consumer expenditures while tracking consumer cash management and the corresponding cash-flow for currency. To our knowledge, this is the first attempt to use longitudinal panel data with individual transactions from payment diaries to estimate a dynamic optimizing model that jointly explains consumer payment instrument use and cash management linked by the accounting cash-flow identity at the transaction level. Samphantharak, Schuh, and Townsend (2018) illustrate the empirical potential of this approach using the 2012 DCPC data to demonstrate how household financial statements can track exact cash-flows connecting the payment instrument used to authorize a specific consumer expenditure directly to the monetary asset or credit liability (balance sheet) used to settle the exchange.

3 Data

This section provides a brief overview of the primary data sources for this paper, the 2012 Diary of Consumer Payment Choice (DCPC) and corresponding 2012 Survey of Consumer Payment Choice. More details can be found in Schuh (2018) and Appendix B.

The SCPC and DCPC are complementary surveys that measure detailed payment choices and cash management of U.S. consumers. SCPC respondents complete an online survey and *recall* from memory their adoption of financial accounts and payment instruments, cash management, and (not used in this paper) frequency of use of payment instruments. DCPC respondents *record* their payment transactions and cash management for three consecutive days. We use SCPC consumer data on adoption of accounts and payment instruments plus DCPC transactions data on: 1) payment values, instrument used, location, and type; 2) cash holdings, deposits, and withdrawals by location; and 3) time of day.

DCPC data are a balanced longitudinal panel of a representative sample of about

2,500 U.S. consumers during October 1-31, 2012. Respondents were selected from the RAND *American Life Panel* to match the population of U.S. adults (ages 18 years and older). After completing their SCPC, respondents were assigned to complete their DCPC on randomly selected days throughout the month so panel entry and exit is deterministic and fixed. This diary design produces representative samples for each day of the month as well as for the entire month.

The DCPC panel data mimic the transaction records of monthly statements for checking and credit card accounts. Thus, they are essentially the same as transactions data from financial institutions provided by the kinds of personal financial management (PFM) services and applications used by Baker (2018), Pagel and Olafsson (2018), and Gelman et al. (2018). Data from financial institutions may have less measurement and reporting error than consumer diary data, but the DCPC data are superior in other respects. For example, the DCPC tracks what consumers do with cash withdrawn from banks, not just how much they withdrew. The DCPC also collects additional relevant information at the time of transaction, such as cash held in wallet. And, importantly, the DCPC data are based on sampling and implementation methods that are designed to produce representative samples of U.S. consumers whereas PFM data are not.

We restrict the sample for model estimation to *in-person* POS transactions, including person-to-person (P2P) payments, by consumers who had *both* a debit card (hence checking account) and credit card. The restricted sample represents the bulk of cash use because online payments don't accept cash and few bill payments are made with cash. Wallet restrictions are made to sidestep the theoretical complication of modeling adoption; in practice, respondents are unlikely to adopt or discard payment cards during the three diary days. The restricted sample accounts for 62 percent of POS transactions and 57 percent of respondents, who are not quite representative of the U.S. population. However, payment card adopters rely on cash relatively less than other consumers, so our results likely serve as a lower bound on the usefulness of cash.

4 Empirical Evidence

This section provides evidence on consumer payment choices and cash management to motivate the model and enhance understanding of the estimation results.¹³

4.1 Payment Adoption and Use

The first two panels of Table 1 report statistics on consumer adoption and use of payment instruments for the DCPC (“full sample”) and sub-sample used in estimation (“estimation sample”). In the full sample, all respondents adopted cash, 78 percent had a debit card, 69 percent had a credit card, 57 percent had both payment cards, and only 10 percent had neither card.¹⁴ In the estimation sample, respondents have all three payment instruments by construction. Despite thicker consumer wallets, cash is still king at the point of sale. In the full sample, cash accounted for half (51 percent) of POS payments by volume (number of transactions). Even in the estimation sample, where respondents have both payment cards, cash accounted for a higher share (44 percent) than either debit cards (31 percent) or credit cards (24 percent). Thus, the estimation subsample understates the full use and value of cash.

Ching and Hayashi (2010) showed that consumer use of payment cards can be influenced by monetary incentives, such as cash back or airline mileage, that entice consumers to use payment cards more often. “Convenience users” who pay off their credit card charges in full each month receive the full benefit of rewards, but “revolvers” who carry high-interest unpaid balances on their cards have an offsetting cost. Table 2 shows consumer payment choices broken down by credit card use (convenience or revolving) and type (with rewards or not) in the estimation sample. Not surprisingly, consumers with a rewards card are more likely to pay with a credit card—convenience users are nearly twice as likely (40.0 versus 23.1 percent), and revolvers more than three times (19.6 versus 5.8).

¹³Reported sample moments are unweighted because the structural model is estimated without weights. The DCPC data are collected using stratified random sampling, so weighted sample means are required to estimate population moments for all U.S. consumers, which can be found in Schuh and Stavins (2014) and Greene, Schuh, and Stavins (2018).

¹⁴The weighted population estimates are quite similar: 100 percent for cash, 79 for debit card, and 72 percent credit card. Cash “adoption” actually is measured in the SCPC and DCPC questionnaires

Variable	DCPC Sample	
	Full	Estimation
<i>Adoption rates (share of respondents)</i>		
Cash	1.00	1.00
Debit card	.78	1.00
Credit card	.69	1.00
Debit and credit card	.57	1.00
Neither debit nor credit card	.10	0.00
<i>Payment use (share of transactions)</i>		
Cash	.51	.44
Debit	.28	.31
Credit	.21	.24
<i>Transactions at POS with cash, debit, credit (#)</i>		
Total	10,822	6,707
When CIA binds	2,803	2,044
When $m < \$2$	1,206	850
<i>Values at POS with cash, debit, credit (\$)</i>		
Median	12.60	13.41
Average	27.99	29.66
Standard deviation	66.66	73.89

NOTE: The number of respondents is 2,468 in the full DCPC sample and 1,272 in the estimation sample.

Table 1: Payment instruments and transactions, 2012

Credit card type	Number of transactions	Percentage of transactions (%)			
		Cash	Debit	Credit	Preceded by withdrawals
Convenience users					
Rewards	1,661	42.6	17.5	40.0	7.5
No rewards	2,582	42.6	34.3	23.1	9.3
Revolvers					
Rewards	1,860	46.0	34.4	19.6	8.3
No rewards	604	47.9	46.4	5.8	9.1
All types	6,707	44.0	31.2	24.8	8.5

Table 2: Payment choices by credit card type, 2012

However, adoption of a rewards card has little effect on cash activity because higher credit card use is largely offset by lower debit card use. Table 2 shows that revolvers use cash 3-5 percentage points more often than convenience users, but cash shares are essentially the same for consumers with and without rewards. Although rewards card holders are less likely to withdraw cash before a transaction, the differences are less than 2 percentage points.¹⁵ These results are fortuitous because the DCPC data do not track whether specific card payments were made with a rewards card or not. Therefore, the model and estimation can focus on cash management without specifying separate decision rules for different types of debit and credit card adopters and users.

4.2 Transactions

The remaining two panels of Table 1 report statistics on the volume and values of transactions for which consumers made payments. Nearly 11,000 POS transactions are recorded in the diary. The estimation sample includes 57 percent of all DCPC respondents who account for a slightly disproportionate amount of payments at 62 percent ($\sim 6,707/10,822$). For close to one-third of transactions ($\sim 2,044/6,707$), cash is not an option because the consumer does not have enough in their wallet to fund the payment and hence the cash-in-advance (CIA) constraint is binding. For almost one in eight transactions ($\sim 850/6,707$), consumers have essentially no cash in their wallet ($< \$2$).

Table 1 also reveals that most POS transactions are relatively low-value. The median consumer payment was \$13, so half of all recorded POS transaction values do not require consumers to hold large amounts of cash. Some merchants impose minimum values (typically \$10) for credit card transactions, which also helps cash to compare favorably. Even the average transaction value was only slightly more than double the median (about \$30) despite large variation (standard deviations). However, the left panel of Figure 1 shows that the full distribution of POS transaction values is skewed to the right by much larger amounts, even after excluding bill payments.

rather than assumed. It is defined as having or using cash at some point during the year.

¹⁵Using SCPC data, Briguevics and Schuh (2013) found no effect of credit card rewards or debt on average cash holdings but showed that cash demand of revolvers is less interest sensitive than cash demand of convenience users.

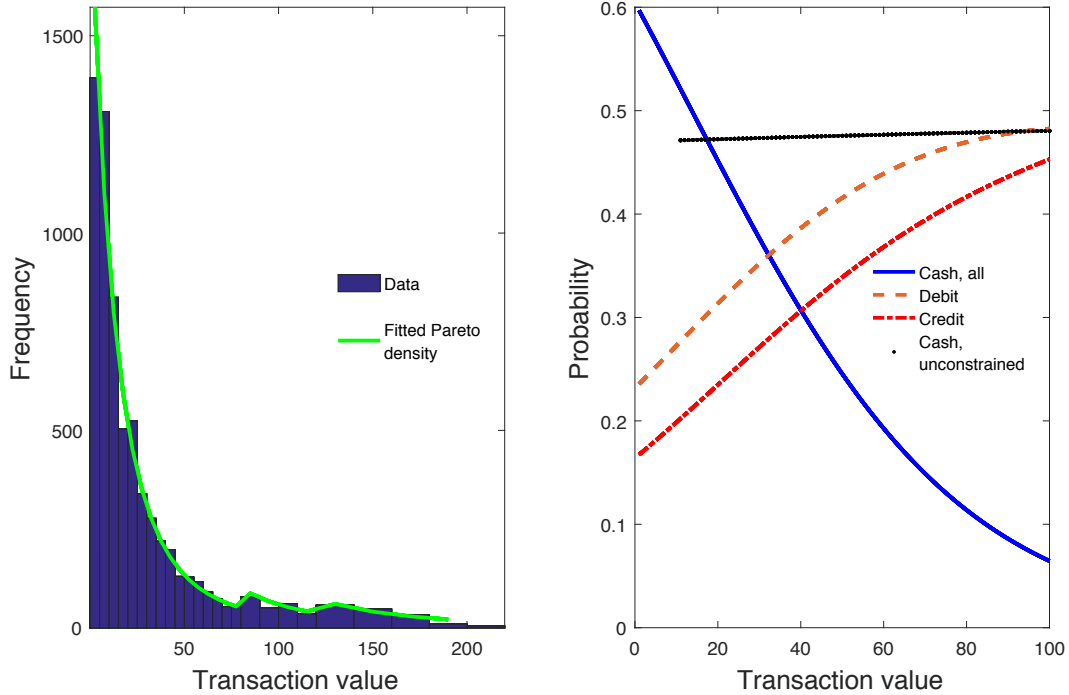


Figure 1: Distribution of POS transaction values (left) and payment probabilities (right)

As noted in Section 2, transaction values are good predictors of the payment instruments consumers choose. Following the literature, we estimated a multinomial logit model of payment choice and plot the unconditional probabilities of each instrument as a function of transaction value in the right panel of Figure 1. Like the scanner data, DCPC data reflect a negative correlation between cash use and transaction values. Payment cards are used more often for larger values, with debit cards slightly higher than credit.¹⁶ These payment choice probabilities are central to estimation of the structural model, which adds controls for consumer-level cash management.

To preview later results showing the sensitivity of cash use to cash holdings, the right panel of Figure 1 also includes the estimated probability of cash use for the subset of transactions that were unconstrained by the amount of cash in their wallets (dotted black line).¹⁷ When consumers had enough cash to pay for their next transaction in full

¹⁶The modest dominance of debit differs from prior estimates using retail-store scanner data that showed credit more common than debit. The reason is that scanner data combines signature debit and credit card payments, which run on the same networks, and could not be identified separately due to technical limitations. Instead, the DCPC measures signature and PIN debit card payments separately, so debit and credit use are identified accurately.

¹⁷The multinomial logit of payment choice simply adds an indicator variable for a binding CIA constraint to the variables in the utility functions (a constant, an indicator variable for transaction values under \$10, and a linear term in the transaction value).

with cash, the probability of using cash was remarkably stable at just under 50 percent for transaction values up to \$100. Thus, the overall negative correlation between cash use and transaction values, observed in the data and noted in the literature, appears to be explained by cash holding behavior. Indirectly, however, the occurrence of payment values that exceed the amount of cash held in wallet reflects consumers' endogenous decision to forego a cash withdrawals that would have removed their cash-in-advance constraint. Our main contribution is to build and estimate a model that can assess whether reluctance to withdraw cash primarily reflects the costs of cash management or consumers' inherent preferences for using cash to pay for transactions, especially those with low value.

4.3 Cash Management

Table 3 reports statistics on cash holdings and withdrawals. In addition to providing context for model estimation, these statistics suggest how well cash demand models in prior research could explain the DCPC data.

4.3.1 Cash holdings

Most consumers hold low amounts of cash, but some hold relatively large amounts (first two panels of Table 3). The median consumer in the estimation sample only has \$20 stored at home (first panel) compared with \$36 in the median consumer's wallet before a transaction (second panel). However, average cash held at home is \$202, whereas the average held in a wallet is only \$76. Thus, while most consumers would require a cash withdrawal to pay for a large-value transaction, some have a large stash of cash they can tap to replenish their cash-in-wallet holdings.¹⁸ The average cash in a wallet can fund 2-1/2 average-sized transactions ($\sim 75.57/29.66$) and 6 median-sized transactions ($\sim 75.57/12.60$), but median cash in wallet can fund less than 2 median transactions ($\sim 20/13$).

¹⁸As explained in Appendix B, these cash-at-home stocks are used to handle cases where the cash-flow identity does not hold. We construct an artificial withdrawal category (not reported in the diary) called "beginning-of-day adjustment" that accounts for about one-fifth of all withdrawals.

Variable	DCPC Sample	
	Full	Estimation
<i>Cash held at home* (\$)</i>		
Median	20.00	20.00
Average	234.23	202.02
Standard deviation	583.15	466.62
<i>Cash in wallet</i>		
<i>Before POS transaction (\$)</i>		
Median	40.00	36.00
Average	80.98	75.57
Standard deviation	145.40	130.58
<i>Before card transactions (ratio)***</i>		
Median debit card	.61	.61
Median credit card	1.37	1.10
Average debit card	3.68	3.62
Average credit card	6.02	4.77
<i>Before withdrawal (\$)</i>		
Median	10.00	11.00
Average	41.32	43.09
Standard deviation	107.63	114.10
<i>Cash withdrawals**</i>		
Number (#)	1,024	573
Median amount (\$)	40.00	40.00
Average amount (\$)	81.30	77.27

NOTES: *Excludes observations above \$5,000. **Excludes observations above \$1,100. Outliers are excluded because they significantly influence estimated moments. ***Value of cash in wallet relative to value of the current card transaction.

Table 3: Cash holdings and withdrawals, 2012

4.3.2 Payments and cash holdings

Although most consumers have non-trivial amounts of cash in their wallets, many pay with a debit or credit card instead of using their available cash. The third panel of Table 3 quantifies this fact by reporting the ratios of cash in wallet to the value of the next card payment; ratios of 1.0 or greater indicate transactions where the CIA constraint was not binding and vice versa for ratios below 1.0. For most credit card payments, the CIA constraint was not binding (median ratio > 1.0), but for most debit card payments it was (ratio of .61). The average ratios of cash to debit and cash to credit payment values are much higher (3.62 and 4.77, respectively), which indicates that even consumers with very large amounts of cash in their wallets still make card payments for some reason.

The relationship between cash-in-wallet and POS transaction values (including card payments) appears in their joint distribution depicted in Figure 2. Both axes are in logs and the transaction value axis is inverted; the heat map denotes the number of transactions. The diagonal between the northwest corner (low transaction values and cash holdings) and southeast corner (high transaction values and cash holdings) demarcates the feasible region for cash payments. Above the diagonal, consumers held sufficient cash to pay for the transaction; below the diagonal, consumers faced a CIA constraint and paid with a card. The key fact in Figure 2 is that most transactions occurred when the CIA constraint was *not* binding. A non-trivial mass of transactions also exists where consumers had very low cash balances (orange-yellow region along the left vertical axis) and thus had to use a payment card.

Narrowing the focus to cash payments only, Figure 3 displays the shares of cash payments for combinations of transaction values and cash on hand. The flat portion of the floor is the infeasible region where the CIA constraint binds. Two important facts are evident. First, cash shares generally decline as transaction values increase for essentially all levels of cash on hand but bottom out at around 0.4, even for large transactions by consumers with enough cash in their wallet (see also right side of Figure 1). Second, the cash share for each transaction value increases slightly with the level of cash on hand. This finding is consistent with consumers worrying about running out of cash and trying

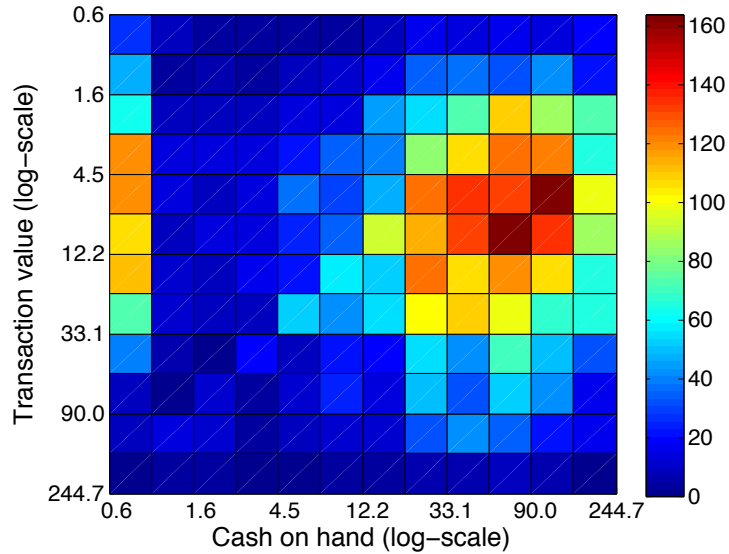


Figure 2: Joint distribution of POS transaction values and cash holdings

to conserve their holdings.

Overall, this subsection provides evidence against the hypothesis that consumers follow a lexicographic ordering of payment instrument choices across their sequential transactions. Consumers make card payments under a variety of cash holding conditions, and vice versa, so models that assume ordering of assets and liabilities (hence payment instrument choices) miss a salient feature of the data. To fit the data, models of cash demand must introduce structure to motivate different payment choices for each transaction and amount of cash holding. The model in the next section does this by introducing instrument-specific random utility that varies across payment opportunities and transaction values.

4.3.3 Withdrawals

The last two panels of Table 3 report cash withdrawals and their relation to cash holdings. Unlike transactions, consumer withdrawals are relatively rare. The estimation sample contains only 573 withdrawals for October 2012, an average of less than one per month (.45) per consumer. In the estimation sample, the median cash withdrawal was \$40 and the average withdrawal amount was almost twice as much (\$77). Figure 4 shows that the full distribution of withdrawal amounts is not smooth. The global mode is \$20 and local modes occur at \$40, \$60, \$100, and \$200—all multiples of the two largest denominations.

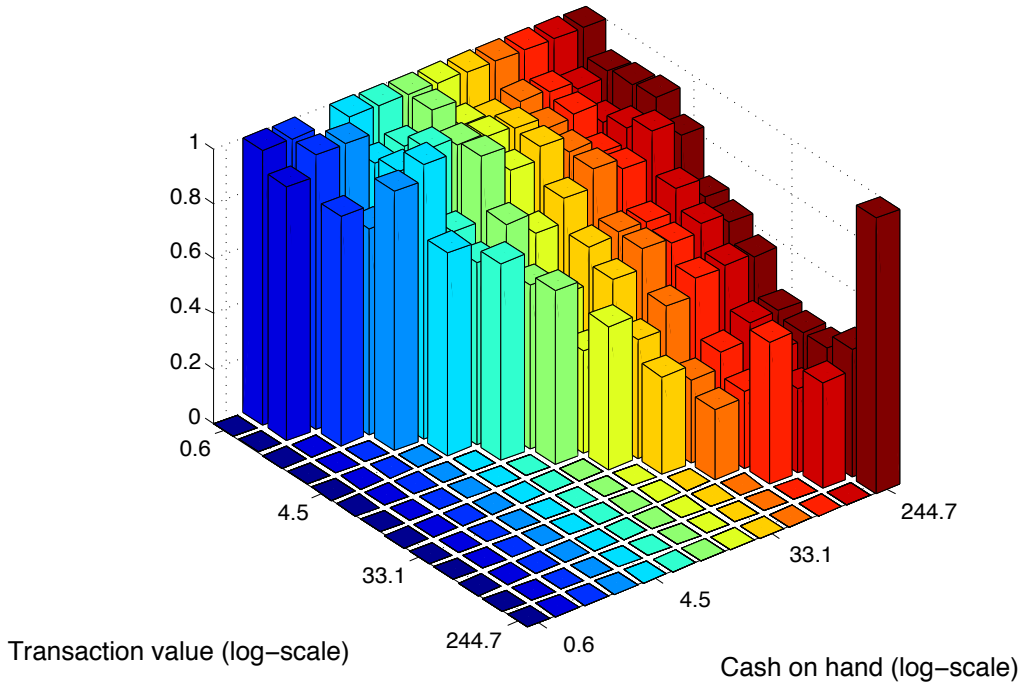


Figure 3: Shares of POS cash transactions

More than one in five withdrawals is less than \$20.

An important feature of these withdrawal data is the heterogeneity of locations shown, in Table 4. ATMs are most common, but obtaining cash from family and friends or from the beginning-of-day adjustment are tied for the second most frequent. These three locations account for nearly two-thirds of all withdrawals, while the remaining third represent a diverse range locations. The average withdrawal amount varies by more than \$100 across locations, which may reflect heterogeneity in the cost of withdrawals at each location. Little evidence is available on the cost of withdrawals by location, but some (bank teller, check cashing store) may be higher cost than others (ATM or cash back). Because there are not enough observations to identify withdrawal costs for each location, our model incorporates this feature with an unobserved random cost.

The penultimate panel of Table 3 shows that most consumers held some cash when making a withdrawal (median of \$11), while some had considerably more (average of \$43 compared to average transaction of \$30). This finding contrasts with the basic Baumol-Tobin framework in which withdrawals only occur when cash holdings reach \$0, but it is consistent with the models in Lippi and Secchi (2009) and Alvarez and Lippi (2009) that

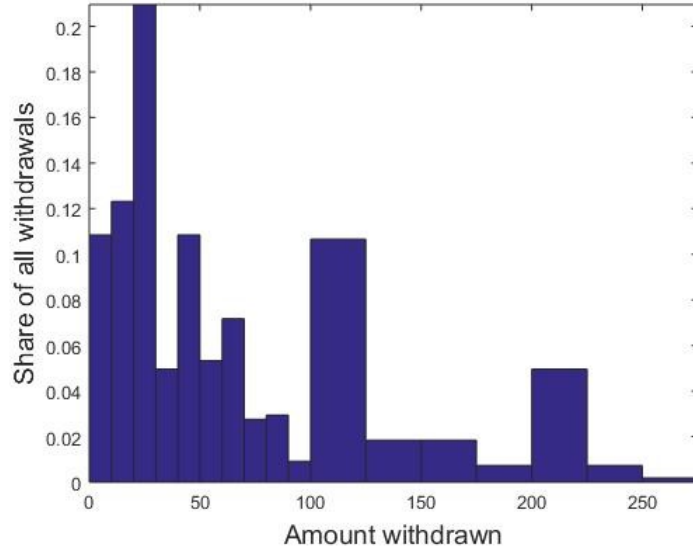


Figure 4: Distribution of withdrawal amounts, 2012

Location	Number	Withdrawal amount (\$)		
		Average	Median	90th percentile
Bank teller	64	156	80	400
ATM	147	103	60	200
Cash back (retail store)	48	31	20	50
Cash refund (retail store)	7	30	21	75
Employer	25	104	70	200
Check cashing store	3	88	68	149
Family or friend	112	44	20	100
Other location	55	53	25	112
<i>Beginning-of-day adjustment</i>	112	60	26	167
Total	573	77	40	200

Table 4: Withdrawals by location, 2012

account for non-zero cash holdings at withdrawal by assuming random free withdrawals. However, the ratio of cash held before withdrawal (\$41-43) to average cash in wallet (\$76-81) is 0.5-0.6, notably higher in the 2012 DCPC than in Alvarez and Lippi (2009) for Italy (0.4) and the United States (0.3) in the 1980s. Lower interest rates and technological changes through 2012 may explain at least part of these differences.

Figure 5 depicts the relationship between withdrawals and transactions by the amount of cash holdings. Symbols (+ and o) indicate the shares of POS transactions (left scale) preceded by a withdrawal when the CIA constraint was binding (+) or slack (o). Stacked bars represent the number of transactions (right scale) used to calculate these shares

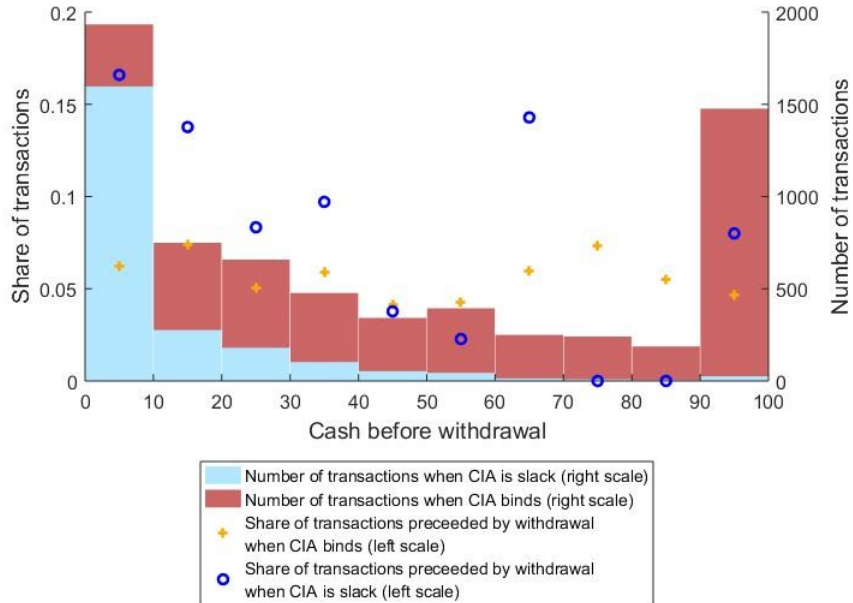


Figure 5: Share of withdrawals by amount of cash holdings

when the CIA constraint was binding or slack. Not surprisingly, consumers are more likely to make a withdrawal when the CIA constraint is binding. For example, when cash holdings are \$10 or less, cash-constrained consumers make a withdrawal for every six transactions whereas unconstrained consumers make one for every 16. When cash holdings reach \$40, the effect of the CIA constraint on withdrawals disappears. Very few consumers with more than \$50 face a binding CIA constraint, so the estimates of pre-transaction withdrawals are erratic in these small samples.

The evidence in this subsection, combined with the evidence in Figure 3 showing cash is used primarily for small transactions, suggests that short-term cash needs are an important driver of withdrawals. On the other hand, payment card holders can keep making purchases long after they run out of cash. These findings illustrate the simultaneity of cash management and payment choice, underscoring the importance of jointly modeling of these consumer decisions.

5 Model

This section describes our model of cash management and payment instrument choice, which blends and builds on Alvarez and Lippi (2009, 2017) and Koulayev et al. (2016).

Consumers finance a stream of transactions that have a stochastic value (p). Before each payment, consumers may withdraw cash; if so, they pay a stochastic withdrawal cost (b) and fixed holding (opportunity) cost of cash between transactions (R). Then, at the point of sale, consumers choose cash, debit card, or credit card to make each payment based on transaction-specific random utility derived from the payment services provided by the payment instrument chosen.

As noted in Section 2, existing models tend to impose a temporal ordering of cash use based on *a priori* assumptions about its cost relative to other means of payment. However, the evidence in Section 4 shows that consumers do not follow lexicographic ordering of payment instrument use, suggesting that the utility of payment services varies across transactions and time. Instead of imposing *a priori* restrictions on instrument value and timing, we parameterize the utility functions and estimate them.

Using a random utility framework to model payment instrument choice means that, unlike traditional inventory management models of cash demand, the withdrawal and holding costs become parameters of a utility function and are not measured in units of money or interest rates. While this feature is important when interpreting the econometric estimates later, it nevertheless fits into the literature that usually interprets these costs broadly. For example, withdrawal costs are usually thought of as including shoe-leather costs of finding an ATM; holding costs capture the inconvenience associated with keeping a certain amount of cash in one's wallet, not just foregone interest.¹⁹

Currency payments are subject to a CIA constraint. If cash balances are insufficient to settle a transaction, consumers cannot take advantage of high utility opportunities associated with cash transactions.²⁰ As a result, their expected utility from future transactions falls as they run out of cash. This change in expected utility is balanced against the costs

¹⁹Given that consumers in the estimation sample make 2.3 (2.0) transactions per day on average (median), the opportunity cost or risk of theft should be small and we interpret holding costs primarily as the "inconvenience" of carrying cash. A generous 2 percent annual rate for checking accounts interest translates into a 0.00002 ($\sim 1.02^{\frac{1}{2.3 \times 365}} - 1$) percent interest rate over the average holding period.

²⁰In reality, debit and credit card payments are subject to funding constraints as well (checking account balances have a zero minimum and credit card borrowing has an upper limit). Ideally, the model would incorporate these constraints too, but the DCPC does not provide data on them. However, the CIA constraint on currency is likely to bind most frequently at the point of sale because some consumers have overdraft protection on debit cards and some consumers can exceed their credit card limits.

of acquiring and holding cash associated with cash inventory management. Since the costs and benefits of holding cash accrue over multiple transactions, consumers take into account current and future costs and utility when making withdrawal and payment decisions. Importantly, in our blended model consumers can adjust their inflows and outflows of cash holdings *continually*, and thus have an extra margin on which to change cash holdings compared to other models of cash demand in the literature.

5.1 The dynamic problem

The formal consumer's problem involves finding the optimal withdrawal and payment choices of a consumer who settles an infinite sequence of transactions with stochastic transaction values, p . Each transaction involves two sequential decisions: (1) a decision whether to withdraw cash before that transaction, followed by (2) a choice of payment instrument for that transaction.

Consider first the problem of choosing a payment instrument for a consumer who already made her withdrawal decision and holds m dollars of cash in her wallet. She can choose **credit**, **debit**, or **cash** (provided she has enough) to pay for the current transaction. Following Koulayev et al. (2016), the model contains a random utility framework where each payment method yields an indirect utility flow, $u^i(p) + \epsilon(i)$, associated with each instrument $i = \{c, d, h\}$. The stochastic part of utility, $\epsilon(i)$, is revealed to the consumer just before she chooses the payment instrument and captures the random value of each transaction that depends on payment choice but is unobservable to the econometrician.²¹ The deterministic part of utility, $u^i(p)$, depends only on the current transaction value, p , which is assumed to be known by the consumer. However, the consumer does not know future realizations of p or $\epsilon(i)$, only the distributions from which they will be drawn.

At each point-of-sale, the consumer solves the Bellman equation

$$V(m; p) = \max_{i \in \{c, d, h\}} u^i(p) + \epsilon(i) + \beta E [W(m'; p', b')] \quad (1)$$

²¹Examples of the random value may include non-acceptance of cash or card payments; discounts or surcharges associated with a payment instrument; unsafe environments where risk of theft is high for cash or where consumers prefer not to share their card information; and store clerks that are slow at dealing with cash.

where $V(m; p)$ denotes the value of having m dollars of cash before making the current p -dollar transaction, and $E[W(m'; p', b')]$ denotes the expected continuation value of reaching the withdrawal decision before the next withdrawal decision with m' dollars of cash. $E[\cdot]$ is the mathematical expectation operator taken over the realizations of all stochastic variables related to the next transaction. The $\epsilon(i)$'s are assumed to be independently and identically distributed Type I extreme value. The law of motion for m is given by $m' = m - p \cdot \mathcal{I}(i = h)$, where \mathcal{I} is an indicator function taking the value of 1 if cash is chosen ($i = h$) and 0 otherwise. β is used to discount the utility from future transactions.

Prior to each transaction, the consumer decides whether to withdraw cash by solving another Bellman equation,

$$W(m; p, b) = \max_{m^* \geq m} -b \cdot \mathcal{I}(m^* \neq m) - R \cdot m^* + E[V(m^*; p)], \quad (2)$$

where $W(m; p, b)$ denotes the value of having m dollars of cash before making a withdrawal decision knowing that the next transaction to be financed is p dollars. The withdrawal cost, b , is drawn from a uniform distribution on the interval $[b_L, b_U]$ before each withdrawal decision, while the holding cost of each dollar of cash between transactions is fixed at R . The consumer will increase cash holdings from m to m^* by making a withdrawal ($m^* - m$) if the expected value of having more cash at the next payment choice, $E[V(m^*; p)]$, exceeds the transaction and opportunity costs of withdrawal. In this case the indicator function $\mathcal{I}(m^* \neq m)$ will equal 1, otherwise it is 0. A unique feature of this model is that *the endogenous withdrawal decision and amount are time-varying* because they depend on the consumer's upcoming transaction value p and on the expected utility of using cash for that transaction.

Assuming consumers know the *exact* value of their next transaction when making withdrawal decisions is convenient and tractable but admittedly strong. It would be preferable to introduce uncertainty about transaction values, but there is no feasible way to infer the magnitude and variation of this uncertainty from the available data. Most of the time, consumers probably know where they plan to shop, what they will buy, and how

much they will spend before making a transaction. In reality, consumers may plan spending for multiple future transactions. In any case, the expected transaction value probably is not the unconditional mean of p in reality. The conditional expected transaction value is important because Figure 5 shows that the actual transaction value explains variation in the likelihood of observing a withdrawal for low cash balances reasonably well.

Our specification of withdrawal costs extends the models of Alvarez and Lippi (2009, 2017) where consumers are randomly offered an opportunity to make free withdrawals, which would appear as a Bernoulli distributed b . Table 4 showed numerous methods to obtain cash, which consumers use to varying degrees. Specifying a continuous distribution for withdrawal costs, b , captures this variation in the data simply. The withdrawal cost only has first-order effects on whether consumers make a withdrawal, not how much they withdraw. Withdrawal amounts would vary even more if holding costs, R , also had a stochastic component, which would improve the fit of our estimated model. Unfortunately, the estimation method cannot handle errors in both b and R .²²

5.2 Timing

Following is a summary of the timing structure of the model.

1. Before each transaction, a consumer with m dollars of cash in her wallet has the option to withdraw cash:
 - (i) Random transaction value, p , and random withdrawal cost, b , are realized and observed by the consumer
 - (ii) Consumer decides how much cash (if any) to withdraw
 - If withdrawing, consumer adjusts her holdings to m^* and incurs fixed withdrawal cost b and cash holding costs $R \cdot m^*$
 - If not withdrawing, she incurs cash holding costs $R \cdot m$

²²With an additional shock to R , the one-to-one mapping between the probability of making a withdrawal (observed in the data) and the percentiles of b (the unobserved structural shock) is broken. However, this mapping is crucial, as it allows us to link the observed behavior to the unobserved states of the model when forward-simulating the value functions. See Section 6 and (Akerberg et al. 2007, , page 103) for more details.

2. After withdrawal decision, the consumer proceeds to the transaction:
 - (i) Random components of utility for the current transaction, $\epsilon(i)$, are realized
 - (ii) Payment instrument is chosen, $i = \{c, d, h\}$
 - (iii) Cash on hand decreases by p , if consumer pays with cash
3. Return to step #1.

6 Estimation

To estimate the model, the deterministic part of the utility function for each payment instrument, $u^i(p)$, is parameterized as

$$u^i(p) = \gamma_0^i + \gamma_{p \leq 10}^i \mathcal{I}(p \leq 10) + \gamma_p^i p \quad i \in \{c, d, h\},$$

which includes a constant, γ_0 , an indicator variable for low-value transactions, $\mathcal{I}(p \leq 10)$, and a linear term in p . The dummy variable for transactions less than \$10 controls for the effects of potential supply-side constraints where vendors do not accept cards due to fees or other costs.²³ If the cash in advance constraint binds, $u^h(p) = -\infty$. The evidence in Section 4 suggests that $\gamma_p^h < 0$ and $\gamma_{p \leq 10}^h > 0$. These utility functions introduce channels for the transaction value to influence payment choice beyond the effects of cash management costs (b and R).

In addition to computational ease, this parsimonious specification of utility is warranted for several reasons. First, Cohen and Rysman (2013) provide evidence from a large U.S. scanner data set that the effect of transaction values on payment instrument choice are not correlated with demographic variables or even individual fixed-effects. Second, although most prior studies use demographic variables as regressors, demographics tend to matter more for adoption of payment instruments than for use conditional on adoption, and our estimation is conditional on adoption of payment cards. Finally, we did not control for card rewards because Section 4.1 showed they had little effect on cash use.

²³We chose \$10 as the cutoff based on U.S. anecdotal evidence and the discrete drop in the probability of cash use at that transaction value seen in Figures 1 and 3.

The model is estimated using the methods described in Bajari, Benkard, and Levin (2007), or BBL, which is an extension of the Hotz and Miller (1993) conditional choice probability (CCP) estimator used in the empirical IO literature to estimate dynamic structural models with discrete and continuous variables. This approach differs from the methodology used in prior studies of cash management or payment instrument choice. In the monetary literature, dynamic models typically are constructed to yield closed-form solutions for withdrawal policies that can be matched to data using GMM estimators. In the payments literature, static models typically are constructed for discrete choices where the likelihood functions have a closed-form that can be estimated or simulated as in Koulayev et al. (2016).

Like CCP estimators, the BBL procedure has two steps. The first-step involves estimating reduced-form models for state transitions, which are used to characterize the expected value function $E[W(m; p, b)]$. As shown in BBL, the linearity of the utility functions (in structural parameters) and the error specifications imply that $E[W(m; p, b)]$ will be a product of the vector of structural parameters and some basis functions that are derived from the observed choices and state variables. The basis functions can be recovered with forward simulations. In our model, this means: 1) a Pareto-distribution is estimated for transaction amounts; 2) a nonparametric estimate describes payment instrument choice; and 3) the observed nonparametric distribution is used to describe withdrawals. In accordance with Figure 5, separate withdrawal functions are used for when the CIA constraint is binding and non-binding. These reduced-form policy functions are used to construct estimates of the basis functions of $E[W(m; p, b)]$ at a number of grid points in the state space. At each grid-point, we drew 10,000 paths of the stochastic variables with 7,200 transactions for each.²⁴

In the second stage of estimation, the structural parameters, $\theta = \{b_L, b_U, R, \gamma_0^h, \gamma_{p \leq 10}^h, \gamma_p^h, \gamma_0^d, \gamma_{p \leq 10}^d, \gamma_p^d, \gamma_0^c, \gamma_{p \leq 10}^c, \gamma_p^c\}$, are recovered using a simulated method of moments estimation as in Pakes, Ostrovsky, and Berry (2007), or POB. β is assumed to be fixed at .995. Cash management costs are restricted to be positive ($b, b_L, b_U, R > 0$) because

²⁴After about 7,200 transactions, the discount factor falls below machine precision so the present value of additional transactions is zero.

they enter equation (2) with negative signs. Using the basis functions from the first-stage simulations and a vector of structural parameters $\hat{\theta}$, the model's prediction is computed for each observation in the sample. As noted in POB, the maximum-likelihood (ML) estimator is not asymptotically efficient because the second stage uses the simulated value function (a function of the basis functions from the first-stage simulations) and not the true value function. Moreover, the ML estimate of the structural parameters can be very sensitive to this error if only a few withdrawals are observed in parts of the state space, resulting in poor small-sample performance. Figure 5 shows this is a realistic concern in the DCPC data.

In the estimation routine, six moments are simulated and matched to their data counterparts: the probabilities of withdrawal for low-value ($m \leq \$25$) and high-value ($m > \25) cash holdings; the probabilities of cash use for low-value ($p \leq 10$) and high-value ($p > \$10$) transactions; the average amount of cash purchases; and the average amount of cash withdrawn. Separating withdrawal probabilities for low and high values of cash holdings and transactions is important, as Figure 5 shows these could be quite different. Careful inspection of equation (1) reveals that when the CIA is binding the continuation value of the two remaining options (debit and credit) is the same since $m' = m$ regardless of which payment card is chosen. Therefore, a simple multinomial logit estimation will identify γ_0^d , $\gamma_{p \leq 10}^d$ and γ_p^d . Because the model only identifies utility differences and not the absolute level, we normalize utility from choosing a credit card to zero ($\gamma_0^c = \gamma_{p \leq 10}^c = \gamma_p^c = 0$). The six moment conditions are used to estimate the six remaining structural parameters $\{b_L, b_U, R, \gamma_0^h, \gamma_{p \leq 10}^h, \gamma_p^h\}$.

7 Results

The estimated coefficients are supportive of the theoretical model, as shown in Table 5. All estimates are statistically significant at the 5-percent level or better except the lower bound on cash withdrawal costs (b_L), which is not significantly different from zero. The cash holding and opportunity cost parameters (b_L , b_U , and R) are restricted to plausible

b_L	b_U	R	γ_0^h	$\gamma_{p \leq 10}^h$	γ_p^h	γ_0^d	$\gamma_{p \leq 10}^d$	γ_p^d
0.0003	7.99	0.0049	2.20	0.79	-0.12	.57	.51	-.0037
(0.08)	(1.57)	(0.001)	(0.43)	(0.37)	(0.03)	(0.13)	(0.22)	(0.0016)

Table 5: Structural parameter estimates (standard errors)

ranges, but the remaining unrestricted parameters have expected signs and plausible magnitudes. Relative utility declines with the transaction price for cash (γ_p^h) and debit card (γ_p^d) payments, although the latter is close to zero. Even after controlling for the costs of managing cash, consumers prefer cards for larger transaction values. Cash and debit card payments less than \$10 offer additional relative utility, suggesting that credit cards have lower acceptance or convenience for small-value payments.

The estimates are parameters of a utility function that do not have natural units and thus can be hard to interpret beyond signs. For examples, b_U , b_L and R do not represent a dollar value or rate of interest, respectively, although R represents units of utility *per dollar* by virtue of multiplying cash holdings (m). Thus, the parameter estimates merit additional interpretation.

7.1 Parameter interpretation

A key result is the distribution of cash withdrawal costs $[b_L, b_U]$. Despite the relatively wide estimated range, in our simulations consumers never withdraw cash if withdrawal costs are greater than 4. That is, withdrawals only happen in the most favorable lower half of the estimated distribution; the average withdrawal cost estimate, $\bar{b} = -0.75$, reveals that consumers time most of their withdrawals strategically. One way to evaluate the economic magnitude of this relative utility estimate is to compare it with another estimated parameter of the inventory problem, such as the holding cost (\hat{R}). In that case, the fixed cost of withdrawals is roughly equal to the utility loss, or "inconvenience," of carrying \$153 ($= \bar{b}/\hat{R}$) between two transactions.

Another way to gauge the size of the withdrawal cost is to compare it with the benefit of a cash withdrawal that gives a consumer the option to pay with cash, which is particularly valuable for small-value transactions. We measure this benefit as the difference

between expected instantaneous utility flow for a consumer who makes a transaction of size p with and without sufficient cash in her wallet. Formally, we calculate

$$\Delta E[u(p)] = \log \left[\sum_{i=\{c,d,h\}} \exp(u^i(p)) \right] - \log \left[\sum_{i=\{c,d\}} \exp(u^i(p)) \right],$$

where the log-sum formula computes the expected utility derived from the payment choice. This formula abstracts from continuation values and thus reduces the problem to a multinomial choice model. Comparing this benefit to the fixed cost of withdrawals, it takes about two median-sized transactions to recoup the fixed cost of a withdrawal:

$$\frac{\bar{b}}{\Delta E[u(p = 13.41)]} = 1.82$$

About 43 percent of POS payments were \$10 or less (see Figure 1), which explains the popularity of cash even though consumers receive relatively low payment-service utility from large-value cash transactions.

7.2 Cash holdings and use

Using the estimated model and data on cash holdings, Figure 6 illustrates the effects of CIA constraints on the probability of cash use by consumers. The four colored line types in Figure 6 plot the estimated probabilities of cash use for amounts of cash held in wallet ranging from \$25-250. When the CIA binds at the wallet amount, cash probabilities reach zero for larger transactions. Even with a roughly average amount of cash (\$75), consumers are reluctant to use cash for larger transactions; less than 20 percent of purchases of \$30 or more are made with cash. The tradeoff changes rapidly with cash holdings; consumers with \$25 make only about one-third of their very small-value transactions with cash and less than 5 percent of \$20 transactions. In contrast, for large cash holdings (e.g., \$250), the probability of cash use is nearly 80 percent and stable up to \$80.

The results in Figure 6 relate to other recent research. Eschelbach and Schmidt (2013) found that cash in wallets *after* transactions is strongly negatively correlated with the

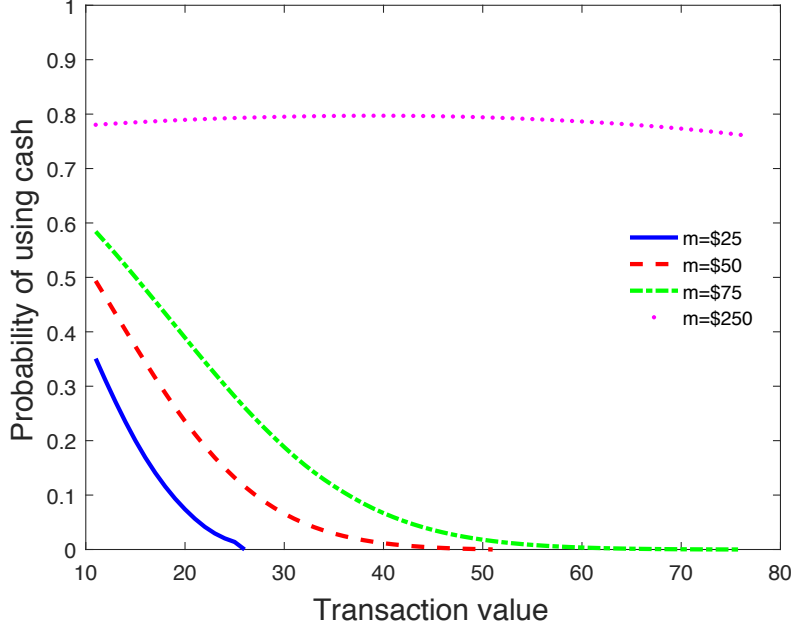


Figure 6: Probability of cash use by transaction value and cash holding

probability of cash use. However, cash holding and withdrawals are jointly determined (see Figure 5), so it is inappropriate to include cash holdings as an explanatory variable in a multinomial logit model without controlling for the endogeneity. Alvarez and Lippi (2017) assume credit card payments are more costly than cash payments on the margin so consumers spend cash as long as they have enough of it—a behavior they call “cash burns.” Figure 6 shows this behavior arises even in a model where the relative value of cash payments fluctuates across transactions and consumers can substitute payment cards for cash at each transaction. Thus, consumers with \$75 of cash and above are *more* likely (greater than 50 percent) to use cash for transactions under \$20 than consumers without a binding CIA constraint (see right panel of Figure 1, black dotted line).

The cash-burn result also is illustrated with the estimated model in Figure 7. To minimize withdrawal costs, consumers defer withdrawals and run down cash inventories until a favorable withdrawal opportunity arises, represented by low value of random cost $b \in [b_L, b_U]$. The intuition underlying this behavior appears in the continuation value, $E[W(m'; p')]$, plotted in the left panel of Figure 7 for each amount of cash held *after* a point of sale was made (and *before* the next holding cost shock and transaction value are realized). The continuation value is hump-shaped with a maximum just below \$50.

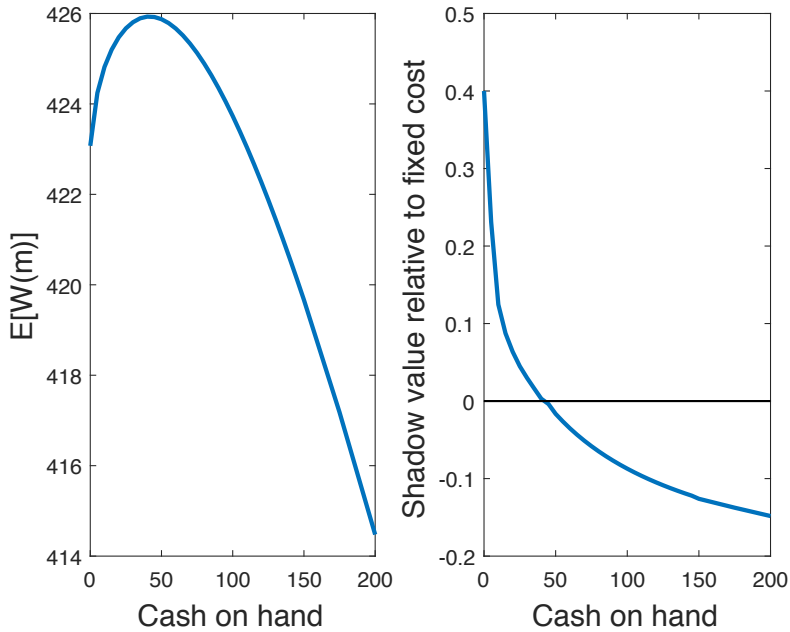


Figure 7: Expected continuation values before holding cost shocks and transaction values are drawn (left); shadow value of an additional dollar in cash (right)

Consumers gladly make cash payments that decrease their holdings to around \$50 but tend to avoid cash purchases that reduce their holdings below \$50.

The shadow value of cash, shown in the right panel of Figure 7, is the marginal utility an extra unit of cash provides by relaxing the CIA constraint for current or future transactions. We compute the shadow value as the difference between the expected continuation values (before p and b are known) of holding $m + 1$ and m dollars of cash,

$$\lambda(m) = E[W(m + 1; p, b)] - E[W(m; p, b)],$$

where the expectation is taken over the realizations of p and b . The plotted shadow value (right panel) is the derivative of the continuation value (left panel) measured relative to the average cost of withdrawals ($\bar{b} = .75$) for different values of m . The shadow value rises rapidly as cash falls below \$50, reaching about 40 percent of the average withdrawal cost when cash is depleted. But when cash rises above \$50 the shadow value turns negative and declines steadily because consumers are made worse off with more cash. Although having more cash relaxes the likelihood of a binding CIA constraint, consumers with more

than \$50 in their wallet are not particularly worried about the constraint because most transactions are low value.

7.3 Consumer welfare

The welfare cost of inflation is a central concern in the monetary literature. Bailey (1956) measured the welfare cost of inflation in a static model with zero-interest money as the area under the interest-elastic money demand curve. More recently, Alvarez and Lippi (2009) computed welfare cost estimates in a dynamic stochastic model with a CIA constraint and inventory management, and Alvarez, Lippi, and Robatto (2019) showed the Baily approach still is appropriate in a wide range of modern inventory theoretic models. However, few studies of money demand consider the effects of payment choice on welfare, so this subsection explores these effects in detail.

7.3.1 Holding costs with instrument choice

Another key result is the magnitude of the estimated cost of holding cash ($\hat{R} = .0049$), which includes the interest elasticity of cash demand among other factors. As holding costs increase, consumers should hold lower cash balances and make more withdrawals, thereby incurring more costs that are pure deadweight loss. However, in a model with non-cash means of payment consumers have an additional margin of response to changes in holding costs—substituting card payments for cash—that may have welfare implications. To gauge the importance of substitution among payment instruments, we simulated the estimated model for different values of the cash holding cost. Because R is a utility parameter, not the interest rate on an alternative asset, we do not know how much R would change if inflation rose one percentage point. Thus, we varied R by about half the estimated value and calculated implied elasticities.

The simulation results in Table 6 reveal the sensitivity of cash management to changes in the holding cost of cash.²⁵ A 50-percent decrease in the holding cost (.0049 to .0025) would raise cash holdings before a transaction about 44 percent (\$25.49 to \$36.59). This

²⁵The reported figures are averages from simulating the choices of 2,000 consumers, who each start with zero cash, for 7,200 periods.

result implies a holding-cost elasticity of demand for cash of $-.85$, larger in absolute value than the prediction of -0.5 in the basic Baumol-Tobin model. Analogous elasticities for cash holdings before withdrawals and for withdrawal amounts are roughly similar. Table 6 also reveals a non-trivial asymmetry. A roughly 50-percent *increase* in holdings costs (.0049 to .0075) causes cash holdings before a transaction to decline about 24 percent (\$25.49 to \$19.47), an elasticity of $-.44$. The probability of making a withdrawal only falls about one-half of 1 percentage point.

R	Cash holdings before		Withdrawal		Cash use share	Cash costs	Payment utility
	transaction	withdrawal	amount	probability			
.0025	36.59	15.57	43.94	.049	.35	26.5	465.5
.0030	33.36	14.01	40.48	.051	.34	28.7	464.1
.0035	30.76	13.21	37.25	.053	.33	30.4	462.7
.0040	28.31	11.28	36.22	.052	.33	31.8	461.1
.0045	26.50	11.03	33.23	.055	.32	33.2	459.9
.0049	25.49	10.68	31.90	.056	.32	34.6	459.0
.0055	23.58	9.69	29.71	.058	.31	35.9	457.4
.0060	22.71	9.43	28.77	.058	.31	37.2	456.5
.0065	21.33	8.65	27.68	.058	.30	37.6	454.5
.0070	20.04	8.23	26.14	.059	.30	38.2	453.0
.0075	19.47	7.79	25.77	.059	.30	39.5	452.4

Table 6: Cash management with different cash holding costs

The estimated model exhibits a novel sensitivity of payment choices to holding costs that differs from inventory theoretic models that assume no change in the cash share of payments. The decrease in holding costs induces a modest increase in the share of transactions made with cash from .32 to .35, or about 9 percent, an elasticity of $-.2$. Given the results in Figure 6, the magnitude of changes in cash holdings and cash share recorded in Table 6 would lead to non-trivial changes in the probabilities of choosing cash. These results reveal that cash holdings are more responsive to R than what standard inventory-theoretic models would predict. Table 6 shows that unless one can directly control for cash spending, estimates of the interest elasticity of cash demand will confound two effects: 1) a change in cash spending, and 2) a change in cash holdings to finance a constant stream of cash spending. Because there is little reason to believe that cash spending remains constant over time when alternative payment methods emerge, there is no reason to believe that the estimated interest elasticity of cash demand should stay

constant over time either.

A reduction in holding costs ambiguously improves consumer welfare, defined as payment utility net of cash management costs, for two reasons. Total cash management costs decline (8.1 units of utility), naturally, in part due to a slight decline in the probability of withdrawal. At the same time, payment utility rises by almost the same amount in absolute terms as the reduction in costs (6.5 units of utility) as consumers take advantage of more cash payments. Cash costs fall much more in percentage terms (23.4 percent) than utility rises (1.4 percent), but the absolute changes in utility are similar and the change in net utility is small. In any case, these additional changes in consumer welfare due to changes in payment choices has been missing from previous research on the demand for money.

7.3.2 Withdrawal costs and technological change

As noted in Section 2, the literature widely acknowledges that considerable improvements in technology such as ATM networks and cash back withdrawals from retail stores have reduced the costs of cash management significantly. To measure the effects of technological change in our model, we ran counter-factual simulations with variation in the lower bound of the cash withdrawal cost from the estimated value ($\hat{b}_L = .0003$) to the midpoint of the estimated range ($b_L = 4$) and compared the models' predicted changes in cash management.

Reducing the lower bound of withdrawal costs affects withdrawals notably more than cash holdings or use, as shown in Table 7. The probability of a withdrawal more than doubles (.023 to .056) and the withdrawal amount nearly falls by half (\$61 to \$32). But cash holdings before a transaction decline less than 20 percent and the cash share only rises 4 percentage points (.28 to .32). As with holding costs, a reduction in cash withdrawal costs make consumers unequivocally better off. These changes primarily impact cash management costs, which fall by one-third (53.2 to 34.6), whereas payment utility rises by just over 1 percent. Collectively, these economically significant changes provide a quantitative guide to the potential effects of recent technological changes.

b_L	Cash holdings before		Withdrawal		Cash use share	Cash costs	Payment utility
	transaction	withdrawal	amount	probability			
.0003	25.49	10.68	31.90	.056	.32	34.6	459.0
1	26.49	6.49	43.56	.038	.31	41.3	457.2
2	27.73	5.12	50.66	.031	.30	46.3	456.0
4	29.04	3.56	60.71	.023	.28	53.2	453.1

Table 7: Cash management with different withdrawal costs

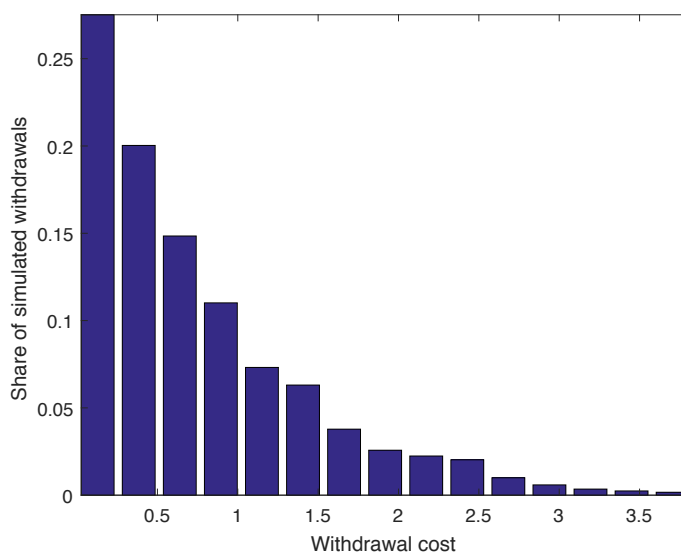


Figure 8: Distribution of simulated withdrawal costs

The estimated costs of withdrawal suggest that the scope for additional cost-saving technology in cash withdrawals going forward may be modest. The full distribution of simulated costs reveals that most are close to zero, as shown in Figure 8, with the median $\hat{b} = .58 < \bar{b} = .75$. Some withdrawals are made at high cost, and these might benefit from further technological changes. But the distribution of withdrawal costs decays rapidly from the lower bound because consumers already strategically make most of their withdrawals at the plentiful number of relatively favorable (low-cost) opportunities available to them.

7.3.3 Value of payment instruments

The emergence of electronic means of payment, including credit and debit cards, has coincided with growing anti-cash sentiment. A leading opponent is Rogoff (2016), who describes cash as a “curse” because it aids crime and tax evasion, and constrains monetary

policy by inhibiting negative interest rates. Evidence on the consumer welfare of cash relative to other payment instruments is limited and varied, however. Alvarez and Lippi (2017) estimated that eliminating cash altogether and forcing consumers to pay with credit would cost a mere \$2 per year, but Alvarez and Argente (2019) find that Uber customers who prefer cash (disproportionately lower income) suffer an average loss of 50 percent of the ride value when they have to use payment cards. Fulford and Schuh (2017) estimated the value of credit card payments is 0.3 percent of annual consumption for convenience users (no high-interest debt). Koulayev et al. (2016) estimated that consumer welfare declines 1-3 percent in response either to a per-transaction fee of 3.6 cents for debit cards or to surcharging credit card payments that offset the merchant discount fee. And consumers lose utility when they prefer cash but it is not accepted for payment, of course.²⁶

To measure consumer welfare associated with payment instruments, we simulated the estimated model under different counter-factual scenarios with exclusion of instruments (equivalently, non-acceptance). Table 8 reports simulation results for cash management decisions and consumer utility in each scenario. For reference, the first row repeats the estimation results of the full model with all instruments. See Appendix A for details of modifications made to the model for the counterfactual simulations.

Eliminating any single payment instrument would entail much larger welfare declines than previous simulations. Elimination of debit cards is the most welfare-reducing, as payment utility would be 22 percent lower and cash management costs would more than triple. Eliminating cash would entail an even larger reduction in payment utility (27 percent), but cash management and related costs would disappear so consumer welfare would be slightly higher than without debit cards. Eliminating credit cards is the least welfare-reducing counterfactual, as payment utility falls less than eliminating cash or debit cards, but cash costs increase less than eliminating debit cards. In every case, welfare declines by about an order of magnitude more than in the counterfactual simulations of

²⁶None of these studies provides a comprehensive general equilibrium analysis of social welfare, which requires incorporating a market for revolving credit, details of bank and non-bank payment services, and the fee structure of the two-sided credit card markets.

Model	Cash holdings before		Withdrawal		Cash use share	Cash costs	Payment utility
	transaction	withdrawal	amount	probability			
Full	25.49	10.68	31.9	.056	.32	16.6	459.0
No cash	0	0	0	0	0	0	336.1
No debit	36.52	15.42	45.3	.072	.47	52.0	357.8
No credit	29.60	12.66	36.8	.063	.37	40.8	401.3
No cards	123.95	55.42	162.1	.177	1.00	219.4	-76.7

Table 8: Cash management with counterfactual payment instruments

changes in cash costs. Note that eliminating just one of the payment cards would not alter dramatically the cash landscape, however. Withdrawal probabilities and cash holdings would be modestly higher, and the cash share would be 5 to 15 percentage points higher; these effects are slightly greater for debit cards.

Eliminating *both* payment cards would make consumers markedly worse off and entail much larger increases in cash activity. Payment utility would decline 117 percent and the cost of cash management would rise more than 1,300 percent. The probability of cash withdrawals would more than triple to nearly one in five payments being preceded by a withdrawal instead of one in 26. Cash holdings before a transaction would increase roughly five-fold to \$124. For perspective on the last outcome, note that Briglevics and Schuh (2013) reports consumers holding \$110 (inflation-adjusted to 2010 dollars) in the mid-1980s.²⁷ At that time, debit cards had not fully diffused yet and credit cards were not used as widely for smaller value payments, so the counterfactual simulation provides a reasonable comparison with actual cash holdings between the two periods.

8 Conclusions

This paper demonstrates that daily transactions-level data on cash demand and payment use from diary surveys can be used successfully to estimate a dynamic optimizing model blending modern elements of cash inventory management and payment choice. The estimated model shows cash demand and payment use are jointly determined, influencing each other in economically meaningful ways. Two important insights for consumer wel-

²⁷See their Table 1 based on the Survey of Currency and Transactions Account Usage conducted by the Federal Reserve Board in 1984 and 1986.

fare are: 1) the level of utility from optimal payment choices is much larger than utility lost from cash management costs; and 2) changes in economic conditions affecting cash management or payment opportunities produce roughly similar magnitudes of change in utility from payment choices and cash costs. Together, the results motivate the need for future research that builds on the blended model.

Relaxing the model’s theoretical restrictions on consumers’ payment planning is an important direction. Endogenizing the number and value of payments (expenditures), planning more than one payment into the future, allowing for bill payments, and introducing shopping time and trips with multiple payments all could lead to broader and deeper insights. Exploring heterogeneity in cash withdrawal opportunities and management of new payment technologies would enhance understanding as well. Introducing merchant acceptance of payments (as in Hunyh, Nicholls, and Shcherbakov 2019, for example) is essential for capturing demand and supply effects in general equilibrium. More generally, integration of the process of search, exchange, and settlement of transactions that is central to New Monetarist models (as in Chiu and Molico 2010, for example) is a natural direction to extend our framework.

Although impressive and valuable, the new payments diary data merit further development that would enable vital enhancements to the theoretical model. Over time, simply having more data will eventually make it feasible to incorporate variation in the precise costs of withdrawals across locations. But extensions and improvements to the data also are needed. Perhaps most importantly, the balances of non-cash assets and liabilities—especially money in checking or other payment accounts plus credit limits and revolving debt from credit card accounts—are essential for completely characterizing CIA—more generally, liquidity in advance (LIA)—constraints that affect the linkage between portfolio management and settlement of payment for consumer expenditures envisioned by Samphantharak, Schuh, and Townsend (2018). More details about the nature of asset and liability accounts, such as the costs and benefits of specific credit cards, and tracking of the exact payment card or instrument used (instead of a simple category like “credit card”) would allow useful enhancements of the theoretical specification of payment

utility. Accurately measuring merchant acceptance for each payment opportunity also is essential to relaxing the assumption that sellers accept every payment instrument.

The estimated model’s characterization of consumer welfare effects from completely restricting payment instrument use (or acceptance) provides a step toward the evaluation of social welfare and optimal public policies related to currency and other payment systems. However, it is not yet sufficient for comprehensive assessments of the many important policy issues of the day. For example, the future of physical currency in an electronic world that has spawned the re-emergence of private currencies like Bitcoin remains uncertain. And neither regulation of payment card interchange fees, such as Federal Reserve Regulation II, nor provision of payment services with faster or real-time settlement, such as the Federal Reserve’s FedNowSM Service, have been evaluated with an economically adequate specification of consumer demand for money and payments.²⁸

Bibliography

Akerberg, Daniel, C. Lanier Benkard, Steven Berry, and Ariel Pakes. 2007. “Econometric Tools for Analyzing Market Outcomes.” In *Handbook of Econometrics*, eds. James Heckman and Edward Leamer, vol. 6A, chap. 63, 4171–4276. Elsevier.

Allais, Maurice. 1947. *Économie & Intérêt*. Paris: Librairie des Publications Officielles.

Alvarez, Fernando, and David Argente. 2019. “Consumer Surplus of Alternative Payment Methods: Paying Uber with Cash.” Unpublished working paper.

Alvarez, Fernando, and Francesco Lippi. 2009. “Financial Innovation and the Transactions Demand for Cash.” *Econometrica* 77(2): 363–402.

Alvarez, Fernando, and Francesco Lippi. 2013. “The Demand of Liquid Assets with Uncertain Lumpy Expenditures.” *Journal of Monetary Economics* 60(7): 753–770.

²⁸For more details, see <https://www.federalreserve.gov/paymentsystems/regii-about.htm> for Reg II and <https://www.frbservices.org/financial-services/fednow/index.html> for FedNowSM.

- Alvarez, Fernando, and Francesco Lippi. 2017. “Cash burns: An Inventory Model with a Cash-Credit Choice.” *Journal of Monetary Economics* 90: 99–112.
- Alvarez, Fernando, Francesco Lippi, and Roberto Robatto. 2019. “Cost of Inflation in Inventory Theoretical Models.” *Review of Economic Dynamics* 32: 206–226.
- Amromin, Gene, and Sujit Chakravorti. 2009. “Whither Loose Change? The Diminishing Demand for Small-Denomination Currency.” *Journal of Money, Credit, and Banking* 41(2-3): 315–335.
- Angrisani, Marco, Kevin Foster, and Marcin Hitezenko. 2014. “The 2011 and 2012 Surveys of Consumer Payment Choice: Technical Appendix.” Research Data Reports 14-2. Federal Reserve Bank of Boston.
- Arango, Carlos A., Dylan Hogg, and Alyssa Lee. 2015. “Why Is Cash (Still) So Entrenched? Insights from Canadian Shopping Diaries.” *Contemporary Economic Policies* 33(1): 141–158.
- Bagnall, John, David Bounie, Kim P. Huynh, Anneke Kosse, Tobias Schmidt, Scott Schuh, and Helmut Stix. 2016. “Consumer Cash Usage: A Cross-Country Comparison with Payment Diary Survey Data.” *International Journal of Central Banking* 12(4): 1–61.
- Bailey, Martin J. 1956. “The Welfare Cost of Inflationary Finance.” *Journal of Political Economy* 64(2): 93–110.
- Bajari, Patrick, C. Lanier Benkard, and Jonathan Levin. 2007. “Estimating Dynamic Models of Imperfect Competition.” *Econometrica* 75(5): 1331–1370.
- Baker, Scott R. 2018. “Debt and the Response to Household Income Shocks: Validation and Application of Linked Financial Account Data.” *Journal of Political Economy* 126(4): 1504–1557.
- Ball, Laurence. 2012. “Short-run Money Demand.” *Journal of Monetary Economics* 59(7): 622–633.

- Bar-Ilan, Avner. 1990. "Overdrafts and the Demand for Money." *American Economic Review* 80(5): 1201–16.
- Baumol, William J. 1952. "The Transactions Demand for Cash: An Inventory Theoretic Approach." *The Quarterly Journal of Economics* 66(4): 545–556.
- Benton, Marques, Krista Blair, Marianne Crowe, and Scott Schuh. 2007. "The Boston Fed Study of Consumer Behavior and Payment Choice: A Survey of Federal Reserve System Employees." Public Policy Discussion Paper 07-1. Federal Reserve Bank of Boston.
- Borzekowski, Ron, Elizabeth K. Kiser, and Shaista Ahmed. 2008. "Consumers' Use of Debit Cards: Patterns, Preferences, and Price Response." *Journal of Money, Credit, and Banking* 40(1): 149–172.
- Bounie, David, and Yassine Bouhdaoui. 2012. "Modeling the Share of Cash Payments in the Economy: An Application to France." *International Journal of Central Banking* 8(4): 175–195.
- Briglevics, Tamás, and Scott Schuh. 2013. "U.S. consumer demand for cash in the era of low interest rates and electronic payments." Working Papers 13-23. Federal Reserve Bank of Boston.
- Briglevics, Tamás, and Scott Schuh. 2014. "An Initial Look at How the Electronic Payments Transformation is Changing Consumer Payments." In *The Usage, Costs and Benefits of Cash - Revisited*. Deutsche Bundesbank.
- Briglevics, Tamás, Scott Schuh, and David Zhang. 2016. "Homing in Payment Instrument Choice." Unpublished working paper.
- Ching, Andrew T., and Fumiko Hayashi. 2010. "Payment card rewards programs and consumer payment choice." *Journal of Banking & Finance* 34(8): 1773–1787.
- Chiu, Jonathan, and Miguel Molico. 2010. "Liquidity, Redistribution, and the Welfare Cost of Inflation." *Journal of Monetary Economics* 57(4): 428–438.

- Cohen, Michael, and Marc Rysman. 2013. "Payment Choice with Consumer Panel Data." Working Paper 13-6. Federal Reserve Bank of Boston.
- Committee on Payments and Market Infrastructure and Markets Committee. 2018. "Central Bank Digital Currencies." Tech. rep. Bank for International Settlements, Basel, Switzerland.
- Duca, John V, and William C Whitesell. 1995. "Credit Cards and Money Demand: A Cross-sectional Study." *Journal of Money, Credit and Banking* 27(2): 604–23.
- ECB. 2012. "Virtual Currency Schemes." Tech. rep. European Central Bank.
- ECB. 2015. "Virtual Currency Schemes – a Further Analysis." Tech. rep. European Central Bank.
- Eschelbach, Martina, and Tobias Schmidt. 2013. "Precautionary Motives in Short-term Cash Management - Evidence from German POS Transactions." Discussion Paper Series 2013,38. Deutsche Bundesbank, Research Centre.
- Fulford, Scott L., and Scott Schuh. 2017. "Credit card utilization and consumption over the life cycle and business cycle." Working Papers 17-14. Federal Reserve Bank of Boston.
- Fung, Ben, Kim Huynh, and Leonard Sabetti. 2012. "The Impact of Retail Payment Innovations on Cash Usage." Working Papers 12-14. Bank of Canada.
- Gelman, Michael, Shachar Kariv, Matthew D. Shapiro, Dan Silverman, and Steven Tadelis. 2018. "How Individuals Respond to a Liquidity Shock: Evidence from the 2013 Government Shutdown." *Journal of Public Economics Online*.
- Gerdes, Geoffrey, Claire Greene, Xuemei (May) Liu, and Emily Massaro. 2019. "The 2019 Federal Reserve Payments Study." Brief. Federal Reserve System.
- Gerdes, Geoffrey R., and Jack K. Walton. 2002. "The Use of Checks and Other Noncash Payment Instruments in the United States." *Federal Reserve Bulletin* 88(8): 360–74.

- Greene, Claire, and Scott Schuh. 2016. “The 2016 Diary of Consumer Payment Choice.” Research Data Report 17-7. Federal Reserve Bank of Boston.
- Greene, Claire, and Scott Schuh. 2017. “The 2016 Diary of Consumer Payment Choice.” Research Data Report 17-7. Federal Reserve Bank of Boston.
- Greene, Claire, Scott Schuh, and Joanna Stavins. 2016. “The 2014 Survey of Consumer Payment Choice: Summary Results.” Research Data Report 16-3. Federal Reserve Bank of Boston.
- Greene, Claire, Scott Schuh, and Joanna Stavins. 2018. “The 2012 Diary of Consumer Payment Choice.” Research Data Report 18-1. Federal Reserve Bank of Boston.
- Hester, Donald D. 1972. “Monetary Policy in the “Checkless” Economy.” *The Journal of Finance* 27(2): 279–293.
- Hitczenko, Marcin. 2015. “Estimating Population Means in the 2012 Survey of Consumer Payment Choice.” Research Data Report 15-2. Federal Reserve Bank of Boston.
- Hotz, Joseph V., and Robert A. Miller. 1993. “Conditional Choice Probabilities and the Estimation of Dynamic Models.” *Review of Economic Studies* 60(3): 497–529.
- Humphrey, David B., Moshe Kim, and Bent Vale. 2001. “Realizing the Gains from Electronic Payments: Costs, Pricing, and Payment Choice.” *Journal of Money, Credit, and Banking* 33(2): 216–234.
- Hunyh, Kim, Gradon Nicholls, and Oleksandr Shcherbakov. 2019. “Explaining the Interplay between Merchant Acceptance and Consumer Adoption in Two-Sided Markets for Payment Methods.” Staff Working Paper 2019-32. Bank of Canada.
- Huynh, Kim, Philipp Schmidt-Dengler, and Helmut Stix. 2014. “The Role of Card Acceptance in the Transaction Demand for Money.” Discussion Paper 10183. CEPR.
- Jack, William, Tavneet Suri, and Robert M. Townsend. 2010. “Monetary theory and electronic money : reflections on the Kenyan experience.” *Economic Quarterly* (1Q): 83–122.

- Klee, Elizabeth. 2008. “How People Pay: Evidence from Grocery Store Data.” *Journal of Monetary Economics* 55(3): 526–541.
- Koulayev, Sergei, Marc Rysman, Scott Schuh, and Joanna Stavins. 2016. “Explaining Adoption and Use of Payment Instruments by U.S. Consumers.” *RAND Journal of Economics* 47(2): 293–325.
- Lagos, Ricardo, Guillaume Rocheteau, and Randall Wright. 2017. “Liquidity: A New Monetarist Perspective.” *Journal of Economic Literature* 55(2): 371–440.
- Lippi, Francesco, and Alessandro Secchi. 2009. “Technological Change and the Households’ Demand for Currency.” *Journal of Monetary Economics* 56(2): 222–230.
- Lucas, Robert E., and Juan Pablo Nicolini. 2015. “On the stability of money demand.” *Journal of Monetary Economics* 73(C): 48–65.
- McCallum, Bennett T., and Marvin S. Goodfriend. 1987. “Money: Theoretical Analysis of the Demand for Money.” In *The New Palgrave Dictionary of Economics*, eds. John Eatwell, Murray Milgate, and Peter Newman. London: Palgrave Macmillan UK.
- Mulligan, Casey B., and Xavier Sala-i-Martin. 2000. “Extensive Margins and the Demand for Money at Low Interest Rates.” *Journal of Political Economy* 108(5): 961–991.
- Nosal, Ed, and Guillaume Rocheteau. 2011. *Money, Payments, and Liquidity*. MIT Press Books. The MIT Press.
- Pagel, Michaela, and Arna Olafsson. 2018. “The Liquid Hand-to-Mouth: Evidence from Personal Finance Management Software.” *The Review of Financial Studies* 31(11): 4398–4446.
- Pakes, Ariel, Michael Ostrovsky, and Steven Berry. 2007. “Simple estimators for the parameters of discrete dynamic games (with entry/exit examples).” *RAND Journal of Economics* 38(2): 373–399.

- Prescott, Edward C. 1987. "A Multiple Means-of-Payment Model." In *New Approaches to Monetary Economics*, eds. William A. Barnett and Kenneth J. Singleton, Proceedings of the Second International Symposium in Economic Theory and Econometrics.
- Prescott, Edward Simpson, and John A. Weinberg. 2003. "Incentives, Communication, and Payment Instruments." *Journal of Monetary Economics* 50: 433–454.
- Reynard, Samuel. 2004. "Financial Market Participation and the Apparent Instability of Money Demand." *Journal of Monetary Economics* 51(6): 1297–1317.
- Rogoff, Kenneth S. 2016. *The Curse of Cash*. Princeton, NJ: Princeton University Press.
- Rysman, Marc. 2007. "An Empirical Analysis of Payment Card Usage." *Journal of Industrial Economics* 55(1): 1–36.
- Samphantharak, Krislert, Scott Schuh, and Robert M. Townsend. 2018. "Integrated Household Surveys: An Assessment of U.S. methods and an innovation." *Economic Inquiry* 56(1): 50–80.
- Samphantharak, Krislert, and Robert M. Townsend. 2009. *Households as Corporate Firms*. Cambridge: Cambridge University Press.
- Sastry, A. S. Rama. 1970. "The Effect of Credit on Transactions Demand for Cash." *The Journal of Finance* 25(4): 777–781.
- Schuh, Scott. 2018. "Measuring Consumer Expenditures with Payment Diaries." *Economic Inquiry* 56(1): 13–49.
- Schuh, Scott, and Joanna Stavins. 2010. "Why Are (Some) Consumers (Finally) Writing Fewer Checks? The Role of Payment Characteristics." *Journal of Banking and Finance* 34: 1745–1758.
- Schuh, Scott, and Joanna Stavins. 2014. "The 2011 and 2012 Surveys of Consumer Payment Choice." Research Data Reports 14-1. Federal Reserve Bank of Boston.

- Sexton, Steven. 2015. "Automatic Bill Payment and Salience Effects: Evidence from Electricity Consumption." *The Review of Economics and Statistics* 97(2): 229–241.
- Shy, Oz. 2013. "How Many Cards Do You Use?" Working Paper 13-13. Federal Reserve Bank of Boston.
- Stavins, Joanna. 2001. "Effect of Consumer Characteristics on the Use of Payment Instruments." *New England Economic Review* (3): 19–31.
- Stokey, Nancy L. 2019. "Means of Payment." Unpublished working paper.
- Telyukova, Irina A. 2013. "Household Need for Liquidity and the Credit Card Debt Puzzle." *Review of Economic Studies* 80(3): 1148–1177.
- Telyukova, Irina A., and Randall Wright. 2008. "A Model of Money and Credit, with Application to the Credit Card Debt Puzzle." *Review of Economic Studies* 75(2): 629–647.
- Tobin, James. 1956. "The Interest-Elasticity of Transactions Demand For Cash." *The Review of Economics and Statistics* 38(3): 241–247.
- Tobin, James. 2008. "Money." In *The New Palgrave Dictionary of Economics*, eds. Steven N. Durlauf and Lawrence E. Blume. Palgrave Macmillan, 2nd ed.
- Townsend, Robert M. 1989. "Currency and Credit in a Private Information Economy." *Journal of Political Economy* 97(6): 1323–1344.
- van der Cruijssen, Carin, Lola Hernandez, and Nicole Jonker. 2015. "In love with the debit card but still married to cash." DNB Working Papers 461. Netherlands Central Bank, Research Department.
- von Kalckreuth, Ulf, Tobias Schmidt, and Helmut Stix. 2009. "Choosing and Using Payment Instruments: Evidence from German Microdata." Working Paper Series 1144. European Central Bank.

Wakamori, Naoki, and Angelika Welte. 2017. “Why Do Shoppers Use Cash? Evidence from Shopping Diary Data.” *Journal of Money Credit and Banking* 49(1): 115–169.

Wang, Zhu, and Alexander L. Wolman. 2016. “Payment Choice and the Future of Currency: Insights from Two Billion Retail Transactions.” *Journal of Monetary Economics* 84: 94–115.

Whitesell, William C. 1989. “The Demand for Currency versus Debitable Accounts.” *Journal of Money, Credit, and Banking* 21(2): 246–251.

Appendix A Counterfactual Models

For clarity, we briefly spell out the models used in the counterfactual simulations. The simplest cases are the models with cash and one type of payment card. These models retain the structure of the benchmark model (described by equations (1) and (2)), but the payment instrument choice equation (1) only includes either debit or credit cards. Formally, either $i \in \{h, c\}$ or $i \in \{h, d\}$.

A.1 No cash

In these simulations consumers choose between credit and debit cards at the point of sale. The model collapses to a sequence of logit models, with a value function of

$$V(p) = \max_{i \in \{d, h\}} u^i(p) + \epsilon(i) + \beta E[V(p')]. \quad (3)$$

Since the only endogenous state variable in the benchmark model was cash holdings, decisions made in the current choice situation have no effect on subsequent transactions.

A.2 No cards

The counterfactual model is an extension of the Baumol–Tobin model with stochastic transaction values and withdrawal costs. Consumers choose withdrawal policies to solve

$$W(m; p, b) = \max -b \cdot \mathcal{I}(m^* \neq m) - R \cdot m^* + \beta E [W(m^* - p; p', b')] \\ m^* \geq m, \quad m^* \geq p.$$

After observing the value of their next transaction, p , and the withdrawal cost, b , consumers decide whether to adjust their cash holdings. Then they make a cash payment (only choice) and move on to another withdrawal decision before their next transaction. Without payment cards, consumers must always have enough cash to pay for the current transaction, p .

The counter-factual model uses the same withdrawal and holding costs as in Table 5, but no utility from card payments. Timing in the counter-factual model also is the same. Thus, consumers know with certainty the amount of their next transaction and are not forced to hold precautionary balances to accommodate the low-probability occurrence of very large-value transactions as in Alvarez and Lippi (2013), which are much less likely for retail payments.

Appendix B Data Appendix

This appendix provides additional details about the Survey (SCPC) and Diary (DCPC) of Consumer Payment Choice and their data. Originally, the SCPC and DCPC were produced by the Federal Reserve Bank of Boston but these data programs are now managed by the Federal Reserve Bank of Atlanta. Data, questionnaires, and associated data reports for each year and survey can be obtained from the Atlanta Fed’s consumer payment website.²⁹ For specific details about the 2012 SCPC and DCPC, see Schuh and Stavins (2014), Angrisani, Foster, and Hitczenko (2014), Hitczenko (2015), and Greene, Schuh, and Stavins (2018).

²⁹<https://www.frbatlanta.org/banking-and-payments/consumer-payments/>.

B.1 Survey Instruments

The SCPC is a 30-minute online questionnaire based on respondent recall that is administered annually each fall beginning in 2008. In most cases, respondents completed the 2012 SCPC at least one day before the DCPC, although the lag may be up to several weeks. SCPC respondents received \$20 incentive compensation for completing the survey. The SCPC is taken first and responses are used to tailor the design of the DCPC for each respondent's adoption patterns.

The DCPC is a 20-minute mixed-mode diary survey that was administered for the first time in October 2012. For three consecutive days, respondents were asked to record all payment and cash management transactions in a physical memory aid. Each night, respondents also completed an online survey to report their cash holdings (including denominations) and the transactions recorded in their memory aid, and to answer follow-up questions about the transactions. If they completed the SCPC, DCPC respondents also received additional incentive compensation of \$60 for completing all three diary days.

The survey instruments primarily are designed to track payment and cash management activity for nine common instruments: cash, checks (personal, certified, or cashier's), money orders, traveler's checks, debit cards (also ATM cards), credit cards, prepaid cards, online banking bill payment and bank account number payment.³⁰ The SCPC also measures consumer adoption of bank accounts that are associated with the payment instruments: checking, saving, credit card, and prepaid card (some of which may be managed by non-banks).

Performance of the survey instruments was relatively good in all dimensions. Item response rates for most survey questions were well above 90 percent. Both survey instruments included real-time error checking methods, and respondents had access to RAND staff for technical and conceptual assistance. The vast majority of respondents rated their interest in both surveys as 4 or 5 on a five-point Likert scale (5 being most interesting).

³⁰Newer payment instruments such as text/SMS (Venmo and Zelle) and cryptocurrencies (bitcoin) are not included. Applications like PayPal or ApplePay are not payment instruments *per se* but use them to process payments in ways that compete with traditional banking services.

B.2 Sampling Methodology

Respondents in the 2012 SCPC and DCPC were selected from the RAND Corporation’s *American Life Panel* (ALP).³¹ Currently, the ALP “is a nationally representative, probability-based panel of more than 6,000 participants who are regularly interviewed over the internet.” In 2012, however, the ALP was in the process of transitioning from a convenience sample to nationally representative over multiple years. Consequently, the 2012 SCPC and DCPC subsamples of the ALP were randomly re-selected using standard methods to match the U.S. population characterized by the Current Population Survey. The matched 2012 SCPC-DCPC sample included 2,468 respondents who completed all three days of the DCPC. The participation rate of respondents selected for the survey and diary participation was nearly 100 percent. Hitzenko (2015) and Angrisani, Foster, and Hitzenko (2014) provide details of the joint sampling methodology for the 2012 survey instruments.

The primary reporting unit in the ALP is a consumer rather than household. Sampling consumers is easier and less expensive than surveying all members of a household. Consumer-based sampling also is likely to produce better estimates of individual payment choices, especially for currency where the head of household may not track all activity. Sampling consumers could lead to mismeasurement of other aspects of payments, like joint bank accounts and shared household bills like utilities. However, proper random selection of consumers should yield a sample that is representative of U.S. households and produces unbiased aggregate U.S. estimates.³² A separate quarterly survey provides a wide array of time series demographic characteristics for each ALP consumer that can be merged with the SCPC and DCPC.

³¹See <https://www.rand.org/research/data/alp.html>.

³²In 2012, the convenience sample nature of the ALP produced around 100 households with two co-habiting adults. This household subsample does not exhibit any large differences from the single-adult sample.

B.3 Survey Design

The SCPC and DCPC were jointly implemented with a common sample of respondents. Starting in September, the SCPC was implemented first and completed prior to the DCPC. In most cases, respondents completed their SCPC at least one day prior to their DCPC. In some cases, the delay may have been a month or so, which could have had minor effects on the synchronization of responses between survey instruments related to adoption of accounts or payment instruments.

Respondents who completed their SCPC were randomly assigned to start their consecutive three-day diaries from September 29 through October 31, with the last diaries being completed on November 2. Each wave of more than 200 DCPC respondents also was randomly selected to be representative of U.S. consumers and staggered across the month so that each day had (in expectation) an equal share of respondents who were completing days one, two, and three of the diary. This procedure is designed to smooth any possible effects of diary fatigue that might lead to incomplete diaries or reduced response quality during a diary period and requires “burn in” (September 29-30) and “cool down” (November 1-2) periods from which the data are not used.

The resulting DCPC data form a balanced longitudinal panel for October 1-31 with fixed entry and exit predetermined by the sampling design and diary methodology. Together, the sampling methodology and survey design make the DCPC sample representative of U.S. consumers for each day of the month and for the entire month. However, the data for individual consumers only extend three days and may not be representative of the individual consumer’s monthly payment and cash management behavior. Thus, individual consumer data cannot be projected to the full month.

B.4 Data Measurement

The primary input for this paper is the DCPC transactions-level data on payments and cash management. For payments, the DCPC measures the following seven items: 1) exact time of day (hour, minute, and a.m. or p.m.); 2) the payment value (dollars and cents); 3) the payment instrument; 4) the location (in-person or not); 5) the device used

(computer, mobile phone, etc. or none); 6) payment type (retail, person-to-person, or bill); and 7) the merchant type (payee). The SCPC measures payment use as the number of payments per month made (volume), which is measured implicitly in the DCPC as the recorded number of payments per day. However, we do not use the SCPC payment volume data because they rely on respondent recall, hence more susceptible to potential measurement error, and do not include dollar values.³³

For cash management, the DCPC measures cash holdings (stock) and other cash-related activities (flows). Every night, respondents record the total dollar values of currency held in their “pocket, purse, or wallet” by denomination (the number and value of \$1 bills, \$5 bills, etc.) but excluding coins. Every day, respondents record the number and dollar values of cash withdrawals by location, cash deposits, and other aspects of cash-related transactions such as conversion of coins to notes.

The 2012 DCPC did not collect stock and flow data on other assets or liabilities, such as bank checking and credit card accounts. The 2012 DCPC collected data on reloadings of prepaid cards, which are quite similar to cash, but did not collect the balances and withdrawals of specific prepaid cards. Subsequent DCPC’s have collected data on balances in *primary* checking accounts only. However, these data are insufficient to track the cash flow of demand deposits if there are multiple accounts, joint account holders, or other complexities in household management of checking account stocks and flows.

B.5 Data Cleaning

For every consumer and every day, the DCPC data should measure exactly the following cash-flow identity:

$$\text{cash tonight} = \text{cash last night} + \text{withdrawals} - (\text{deposits} + \text{cash payments}).$$

In practice, however, there is potential error in this measurement. To minimize the potential measurement error, the online diary survey uses this exact accounting cash-flow

³³Despite relying on recall, the SCPC data on payment use are surprisingly close to the DCPC estimates except for cash, where the DCPC estimates are significantly higher perhaps due to better tracking.

identity and other techniques for real-time error checking and data correction to ensure that the daily cash-flow identity holds. More than 70 percent of daily consumer-level cash-flow identities held within a rounding error (\$1 per transaction allowing for coins).

When individual consumer-day cash-flow identities did not hold, we cleaned the micro data following methods used in other consumer or household surveys that collect dynamic cash data, such as the Townsend-Thai Monthly Survey (see Samphantharak and Townsend 2009). When cash-flow errors were negative, suggesting that respondents spent more cash (or made more deposits) during the day than they recorded, we increased their end-of-day cash holdings sufficiently to eliminate negative cash-flow entries. One explanation for these negative errors is that respondents used cash stored in their home or elsewhere, which was not collected in the 2012 DCPC but is estimated in the SCPC to be much larger than cash in wallet. Measurement errors also may have occurred in reporting of the cash stocks or withdrawals but positive cash-flow errors are smaller and less common. In any case, we trusted respondent reporting of cash management and adjusted end-of-day cash holdings whenever the cash-flow identity was violated.

In the few cases where cash was used to pay bills (which were excluded from the sample), we adjusted the respondent's cash holdings by subtracting the amount of the bill so our measure of cash holdings reflects only cash balances held for making POS transactions. This procedure is not entirely innocuous. For example, consumers who make a large bill payment with cash may make a withdrawal beforehand, in which case they might withdraw cash to cover POS expenses as well. However, our estimation sample has only five instances where a cash bill payment is preceded by a withdrawal that is larger than the amount of the bill payment, so this restriction is unlikely to influence our results. In any case, bill payments often involve different means of payment (online banking, bank account number payment) that are unavailable at the point of sale and likely entail different decision making than POS payments such as planning and budgeting at monthly or annual frequencies. Sexton (2015) also argues that bill payments involve aspects of behavioral economics.