



Hastie, C. E. et al. (2020) Vitamin D concentrations and COVID-19 infection in UK Biobank. *Diabetes and Metabolic Syndrome: Clinical Research and Reviews*, 14(4), pp. 561-565. (doi: [10.1016/j.dsx.2020.04.050](https://doi.org/10.1016/j.dsx.2020.04.050))

There may be differences between this version and the published version. You are advised to consult the publisher's version if you wish to cite from it.

<http://eprints.gla.ac.uk/215144/>

Deposited on 1 May 2020

Enlighten – Research publications by members of the University of Glasgow  
<http://eprints.gla.ac.uk>

## **Vitamin D concentrations and COVID-19 infection in UK Biobank**

Claire E Hastie PhD<sup>1</sup>, Daniel F Mackay PhD<sup>1</sup>, Frederick Ho PhD<sup>1</sup>, Carlos A Celis-Morales PhD<sup>1,2</sup>, Srinivasa Vittal Katikireddi PhD<sup>1</sup>, Claire L Niedzwiedz PhD<sup>1</sup>, Bhautesh D Jani PhD<sup>1</sup>, Paul Welsh PhD<sup>2</sup>, Frances S Mair MD<sup>1</sup>, Stuart R Gray PhD<sup>2</sup>, Catherine A O'Donnell PhD<sup>1</sup>, Jason MR Gill PhD<sup>2</sup>, Naveed Sattar MD, PhD<sup>2\*</sup> Jill P Pell MD<sup>1\*</sup>

\*Joint senior authors

### Affiliations

<sup>1</sup> Institute of Health and Wellbeing, University of Glasgow, 1 Lilybank Gardens, Glasgow, G12 8RZ, United Kingdom

<sup>2</sup> Institute of Cardiovascular and Medical Sciences, University of Glasgow, BHF Glasgow Cardiovascular Research Centre, 126 University Place, Glasgow, G12 8TA, United Kingdom

### Address for correspondence

Professor Jill Pell

Institute of Health and Wellbeing,

University of Glasgow,

1 Lilybank Gardens,

Glasgow G12 8RZ,

United Kingdom.

Tel: +44 (0)141 330 3239

E-mail address: [jill.pell@glasgow.ac.uk](mailto:jill.pell@glasgow.ac.uk)

## Study Highlights

- A novel coronavirus that manifested in 2019 (SARS-CoV-2) has led to a pandemic of pneumonia-related illness (COVID-19). There is an urgent need to better understand risk factors for contracting the infection and for poorer prognosis thereafter.
- Evidence is emerging that COVID-19 disproportionately affects black and minority ethnic individuals, but the underlying mechanism is unknown. One potential mediator could be their higher prevalence of apparent vitamin D deficiency.
- We explored whether blood 25 hydroxyvitamin D (25(OH)D) concentration was associated with COVID-19 risk among UK Biobank participants, and whether this explained wholly, or in part, the higher incidence of COVID-19 infection in ethnic minority participants.
- Our analyses of UK Biobank data provided no evidence to support a potential role for (25(OH)D) concentration to explain susceptibility to COVID-19 infection either overall or in explaining differences between ethnic groups.

## **Abstract**

### **Background and Aims**

COVID-19 and low levels of vitamin D appear to disproportionately affect black and minority ethnic individuals. We aimed to establish whether blood 25-hydroxyvitamin D (25(OH)D) concentration was associated with COVID-19 risk, and whether it explained the higher incidence of COVID-19 in black and South Asian people.

### **Methods**

UK Biobank recruited 502,624 participants aged 37-73 years between 2006 and 2010. Baseline exposure data, including 25(OH)D concentration and ethnicity, were linked to COVID-19 test results. Univariable and multivariable logistic regression analyses were performed for the association between 25(OH)D and confirmed COVID-19, and the association between ethnicity and both 25(OH)D and COVID-19.

### **Results**

Complete data were available for 348,598 UK Biobank participants. Of these, 449 had confirmed COVID-19 infection. Vitamin D was associated with COVID-19 infection univariably (OR=0.99; 95% CI 0.99 – 0.999;  $p=0.013$ ), but not after adjustment for confounders (OR=1.00; 95% CI=0.998-1.01;  $p=0.208$ ). Ethnicity was associated with COVID-19 infection univariably (blacks versus whites OR=5.32, 95% CI=3.68 – 7.70,  $p$ -value<0.001; South Asians versus whites OR=2.65, 95% CI=1.65 – 4.25,  $p$ -value<0.001). Adjustment for 25(OH)D concentration made little difference to the magnitude of the association.

### **Conclusions**

Our findings do not support a potential link between vitamin D concentrations and risk of COVID-19 infection, nor that vitamin D concentration may explain ethnic differences in COVID-19 infection.

**Keywords**

COVID-19; vitamin D; ethnicity

## **Introduction**

A novel coronavirus that manifested in 2019 (SARS-CoV-2) has led to a pandemic of pneumonia-related illness (COVID-19) with an estimated case fatality of around 1%. There is an urgent need to better understand risk factors for contracting the infection and for poorer prognosis thereafter.

There is growing evidence that COVID-19 disproportionately affects black and minority ethnic individuals, with the Intensive Care National Audit and Research Centre reporting that a third of confirmed cases admitted to critical care in England are non-white<sup>1</sup>. This compares with the 2011 Census figures which show that 14% of the general population of England and Wales identify themselves as black and minority ethnic individuals.<sup>2</sup> Similarly, in the United States a pattern of higher risk has been observed in African Americans.<sup>3</sup> Consequently, the relationship between ethnicity and COVID-19 has been identified as an urgent public health research priority.<sup>4</sup>

Several factors have been proposed to explain the apparent greater risk of COVID-19 infection in ethnic minority groups. UK Government statistics show that people from black and minority ethnic backgrounds are more likely than white British people to live in the most socioeconomically deprived areas of England.<sup>5</sup> Furthermore, certain minority ethnic groups experience a higher burden of comorbid disease,<sup>6</sup> which may put them at higher risk of more severe COVID-19 infection.<sup>7,8</sup>

One potential mediator could be the higher prevalence of apparent vitamin D deficiency in black and minority ethnic populations.<sup>4</sup> Vitamin D is variably inversely associated with

multiple health outcomes and mortality (although these associations may not be causal).<sup>9</sup>

Most vitamin D results from production in the skin following exposure to ultraviolet (UV) radiation from the sun. Individuals with dark skin have, on average, lower concentrations of blood vitamin D because the melanin in dark skin does not absorb as much UV.<sup>10</sup>

Furthermore, deficiency is more common in high latitude countries such as the UK. Whilst most chronic conditions have not been improved by vitamin D supplementation, a recent meta-analysis of randomised trials suggested vitamin D may lessen the risk of acute respiratory infections.<sup>11</sup>

In this study, we hypothesised that blood 25 hydroxyvitamin D (25(OH)D) concentration was associated with COVID-19 risk among UK Biobank participants, and explained wholly, or in part, the higher incidence of COVID-19 infection in ethnic minority participants.

## **Subjects**

UK Biobank recruited 502,624 participants aged 37-73 years across England, Scotland and Wales between 2006 and 2010. Its aim was to identify the causes of disease and death in middle and old age by following up participants over time. At baseline, biological measurements were recorded and touch-screen questionnaires administered according to a standardised protocol.<sup>12, 13</sup> The study received ethical approval from the North West Multi-Centre Research Ethics Committee (REC reference: 16/NW/0274), and was conducted in accord with the principles of the Declaration of Helsinki. All participants gave written informed consent for data collection, analysis, and record linkage.

## Materials and Methods

Baseline data from UK Biobank were linked to COVID-19 test results provided by Public Health England,<sup>14</sup> including the specimen date, origin (whether the person was an inpatient or not) and result (positive or negative). Confirmed COVID-19 infection was defined as at least one positive test result. Data were available for the period 16th March 2020 to 14th April 2020.

Exposures were measured at the baseline assessment visits conducted between 2006 and 2010. Blood collection sampling procedures for the study have previously been described and validated.<sup>15</sup> Biochemical assays, including 25(OH)D, a measure of vitamin D status, were performed at a central laboratory on around 480,000 samples. Further details of these measurements can be found in the UK Biobank Data Showcase and Protocol.<sup>16</sup> Vitamin D was imputed with the minimum detectable value (10nmol/L) if it was below the limit of detection, and the maximum detectable value (375nmol/L) if too high for detection.

Ethnicity was self-reported, and categorised as white, black, South Asian, or other.

Smoking status was self-reported and categorised as current or non (ex/former) smoker.

Blood pressure was measured at the baseline visit using an automated measurement, and the average of available measures used. Height was measured using a Seca 202 height measure.

Weight was measured to the nearest 0.1 kg using the Tanita BC-418 MA body composition

analyser. Body mass index (BMI) was derived from  $\text{weight(kg)/height(m)}^2$ . It was

categorised into underweight ( $\text{BMI} < 18.5 \text{ kg/m}^2$ ), normal weight ( $\text{BMI } 18.5\text{-}24.9 \text{ kg/m}^2$ ),

overweight ( $\text{BMI} \geq 25\text{-}29.9 \text{ kg/m}^2$ ) and obese ( $\text{BMI} \geq 30 \text{ kg/m}^2$ ). Area-level socioeconomic

deprivation was assessed by the Townsend score (incorporating measures of unemployment,

non-car ownership, non-home ownership and household overcrowding).<sup>17</sup> Higher scores on



the Townsend score represent greater socioeconomic deprivation; scores were categorised into quintiles. Diabetes at baseline was defined as self-reported physician-diagnosed type 1 or type 2 diabetes, a primary care or hospital record of diabetes at or before recruitment (defined as ICD-10 codes E10-E14.9), or diabetes medication. Household income was self-reported and categorised into: <£18,000; £18,000-£30,999; £31,000-£51,999; £52,000-£100,000; or >£100,000. Health was self-rated as excellent, good, fair, or poor. Long-standing illness, disability or infirmity was self-reported as yes or no.

Univariable logistic regression analysis was performed of the association between 25(OH)D concentration (as a continuous variable) and confirmed COVID-19 infection. The model was then adjusted for sex, month of assessment, Townsend deprivation quintile, household income, self-reported health rating, smoking status, BMI quintile, ethnicity, age at assessment, diabetes, systolic blood pressure (SBP), diastolic blood pressure (DBP), and long-standing illness, disability or infirmity. As sensitivity analyses these models were repeated with participants categorised as vitamin D deficient (defined as <25nmol/L) or not deficient<sup>18</sup> and then categorised as vitamin D insufficient (defined as <50nmol/L) or sufficient.

Next, univariable logistic regression was performed of the association between ethnicity and confirmed COVID-19 infection. The model was first adjusted for 25(OH)D, then sex, month of assessment, Townsend deprivation quintile, household income, self-reported health rating, smoking status, BMI quintile, age at assessment, diabetes, SBP, DBP, and long-standing illness, disability or infirmity.

Finally, multivariable analysis was performed including an ethnicity\*vitamin D deficiency interaction term. All analyses were undertaken using Stata v14.

## Results

Results were available for 2,724 COVID-19 tests conducted on 1,474 individuals. Complete data on (25(OH)D) concentration and covariates were available for 348,598 UK Biobank participants. Of these, 449 had a positive COVID-19 test.

Table 1 presents study participants by presence or absence of positive COVID-19 test result. Median 25(OH)D concentration measured at recruitment was lower in patients who subsequently had confirmed COVID-19 infection (28.7 (IQR 10.0-43.8) nmol/L) than other participants (32.7 (IQR 10.0-47.2) nmol/L). It predicted COVID-19 infection univariably (Table 2; OR=0.99, 95% CI 0.99 – 0.999,  $p=0.013$ ), but not after adjustment for covariates (OR=1.00; 95% CI=0.998-1.01;  $p=0.208$ ). Exposures that did predict COVID-19 status in the multivariable logistic regression were male sex (OR=1.41; 95% CI=1.16-1.71;  $p$ -value=0.001), higher socioeconomic deprivation (highest vs lowest Townsend quintile OR=1.89; 95% CI=1.37-2.60;  $p$ -value<0.001), poorer self-reported health status (poor health vs excellent health OR=2.32; 95% CI=1.45-3.72;  $p$ -value<0.001), age at assessment (OR=1.02; 95% CI=1.00-1.03;  $p$ -value=0.016), being overweight (OR=1.34; 95% CI=1.04-1.72;  $p$ -value=0.024) or obese (OR=1.62; 95% CI=1.23-2.14;  $p$ -value=0.001), and non-white ethnicity (blacks OR=4.30, 95% CI=2.92-6.31,  $p$ -value<0.001; South Asians OR=2.42, 95% CI=1.50-3.93,  $p$ -value<0.001) (Figure 1).

When participants were categorised into vitamin D deficient (<25nmol/L) and not deficient the pattern of results was similar to those observed with vitamin D concentration entered as a continuous variable (univariable OR=1.37, 95% CI=1.07-1.76,  $p$ -value=0.011; adjusted OR=0.92, 95% CI=0.71-1.21,  $p$ -value=0.564) (Table 2). When participants were categorised into vitamin D insufficient (<50nmol/L) and sufficient there was no association with COVID-

19 infection either univariably (OR=1.19, 95% CI=0.99-1.44, p-value=0.068), nor multivariably (OR=0.88, 95% CI=0.72-1.08, p-value=0.232) (Table 2).

In the study, 331,849 (95.20%) participants were white, 5,054 (1.45%) black, 5,936 (1.70%) South Asian, and 5,759 (1.65%) other. Of the 449 participants with confirmed COVID-19 infection, 385 (85.75%) were white, 32 (7.13%) black, 19 (4.23%) South Asian, and 13 (2.90%) other. Median 25(OH)D concentration was 33.8 (IQR 10.0-48.1) nmol/L in white participants, 21.0 (IQR 10.0-29.9) in black participants, 14.5 (IQR 15.5-22.1) in South Asian participants, and 23.3 (IQR 10.0-33.7) nmol/L in others. In this study 38,778 (11.69%) white, 1,834 (36.29%) black, 3,403 (57.33%) South Asian, and 1,671 (29.02%) of other participants were vitamin D deficient at baseline.

In logistic regression, black ethnicity and South Asian ethnicity were both associated with confirmed COVID-19 infection univariably (OR=5.49, 95% CI=3.82 – 7.88,  $p$ -value<0.001; OR=2.76, 95% CI=1.74 – 4.39,  $p$ -value<0.001 respectively) compared with whites.

Adjustment for 25(OH)D concentration made little difference to the magnitude of the associations (Table 3). Results were similar when, instead of adjusting for 25(OH)D concentration, adjustment was made separately for vitamin D deficiency and vitamin D insufficiency.

There was no significant interaction between ethnicity and vitamin D deficiency (OR=0.90; 95% CI=0.66-1.23;  $p$ -value=0.515).

## **Discussion**

Our findings are consistent with previous studies <sup>7,19</sup> in demonstrating a higher risk of confirmed COVID-19 infection in ethnic minority groups. Vitamin D has been suggested as possibly protective of COVID-19 infection <sup>20-22</sup> and, if so, could plausibly play a role in ethnic variations in COVID-19 infection. However, we found no association between 25(OH)D and COVID-19 infection after adjusting for potential confounders. Therefore, despite 25(OH)D concentration being lower in black and minority ethnic participants, there was no evidence that it might play a role in their higher risk of COVID-19 infection.

It has been suggested in some media outlets that language barriers may contribute to ethnic differences in COVID-19 risk. This is unlikely to contribute to the risk we observed in UK Biobank because all participants spoke English (albeit with the possibility of fluency variation). The association with ethnicity was only slightly attenuated after adjustment for socioeconomic and lifestyle differences in white and black and minority ethnic participants; the risk of COVID-19 remained around 4-fold in black participants and more than 2-fold in South Asians. Further studies are required to determine the mechanisms underlying ethnic variations in risk of COVID-19 infection and its severity. It may be that pathways related to cardiometabolic conditions or differences in cardiorespiratory reserve, or potentially other social factors, are more relevant, as we have recently discussed.<sup>23</sup>

Our study replicated findings showing increased risk of COVID-19 in black and minority ethnic individuals, in men, and in people who are overweight or obese. It is surprising that we did not observe an association between diabetes or blood pressure and COVID-19 risk. Other studies have shown increased risk of hospitalisation and severe illness requiring ventilation in patients with diabetes and hypertension. <sup>7,24</sup> However, ours is a relatively healthy general

population cohort. Furthermore, we do not have information on the severity of COVID-19 and have included all positive tests rather than only severe cases.

We did not show an independent association between smoking and COVID-19. Evidence from the literature is mixed. Initial studies suggested that current smoking increases the risk of severe infection.<sup>25</sup> However, this has since been disputed with some evidence that smoking may even protect against initial infection.<sup>26</sup>

The strengths of UK Biobank include its extensive phenotyping which enables the adjustment for demographic and lifestyle risk factors, disease and ill health, its large sample size, and its central processing laboratory for biochemical assays. However, it is not representative of the general population, in that participants live in less socioeconomically deprived areas, are predominantly Caucasian, and have fewer self-reported health conditions.<sup>27</sup> We have demonstrated that ethnic differences in COVID-19 infection exist in this relatively healthy population. Baseline measurements, including 25(OH)D concentration and health status, were obtained a decade ago. It would be preferable to have measurements immediately preceding development of COVID-19. However, 25(OH)D concentrations vary more by season than year, and generally track over time.<sup>28</sup>

Our study is the first to assess whether there is an association between blood 25(OH)D concentration and COVID-19 risk. We found no such link, suggesting that measurement of 25(OH)D would not be useful to assess risk in clinical practice. Furthermore, our results suggest that vitamin D is unlikely to be the underlying mechanism for the higher risk observed in black and minority ethnic individuals and vitamin D supplements are unlikely to provide an effective intervention.

## **Conclusion**

Our analyses of UK Biobank data provided no evidence to support a potential role for (25(OH)D) concentration to explain susceptibility to COVID-19 infection either overall or in explaining differences between ethnic groups.

## References

1. Intensive Care National Audit and Research Centre. *Covid-19 study case mix programme*; 2020.
2. Office for National Statistics. *2011 Census*. 2011 [cited; Available from: <https://www.ons.gov.uk/census/2011census>]
3. John Hopkins Coronavirus Resource Centre. 2020 [cited; Available from: <https://coronavirus.jhu.edu/data/racial-data-transparency>]
4. Khunti K, Singh AK, Pareek M, Hanif W. Is ethnicity linked to incidence or outcomes of covid-19? *BMJ* 2020; **369**: m1548.
5. UK Government. *Ethnicity facts and figures*. 2018 [cited; Available from: <https://www.ethnicity-facts-figures.service.gov.uk/uk-population-by-ethnicity/demographics/people-living-in-deprived-neighbourhoods/latest>]
6. Forouhi NG, Sattar N. CVD risk factors and ethnicity--a homogeneous relationship? *Atheroscler Suppl* 2006; **7**: 11-9.
7. Petrilli CM, Jones SA, Yang J, Rajagopalan H, O'Donnell L, Chernyak Y. et al. Factors associated with hospitalization and critical illness among 4,103 patients with COVID-19 disease in New York City. *medRxiv* 2020.
8. Tu H, Tu S, Gao S, Shao A, Sheng J. The epidemiological and clinical features of COVID-19 and lessons from this global infectious public health event. *J Infect* 2020.
9. Theodoratou E, Tzoulaki I, Zgaga L, Ioannidis JP. Vitamin D and multiple health outcomes: umbrella review of systematic reviews and meta-analyses of observational studies and randomised trials. *BMJ* 2014; **348**: g2035.
10. Nair R, Maseeh A. Vitamin D: The "sunshine" vitamin. *J Pharmacol Pharmacother* 2012; **3**: 118-26.
11. Martineau AR, Jolliffe DA, Greenberg L, Aloia JF, Bergman P, Dubnov-Raz G et al. Vitamin D supplementation to prevent acute respiratory infections: individual participant data meta-analysis. *Health Technol Assess* 2019; **23**: 1-44.
12. Collins R. What makes UK Biobank special? *Lancet* 2012; **379**: 1173-4.
13. Sudlow C, Gallacher J, Allen N, Beral V, Burton P, Danesh J et al. UK biobank: an open access resource for identifying the causes of a wide range of complex diseases of middle and old age. *PLoS Med* 2015; **12**: e1001779.
14. Armstrong J, Rudkin J, Allen N, Crook D, Wilson D, Wyllie D et al. *Dynamic linkage of COVID-19 test results between Public Health England's Second Generation Surveillance System and UK Biobank*; 2020.
15. Elliott P, Peakman TC, Biobank UK. The UK Biobank sample handling and storage protocol for the collection, processing and archiving of human blood and urine. *Int J Epidemiol* 2008; **37**: 234-44.
16. UK Biobank. [cited; Available from: <https://www.ukbiobank.ac.uk/>]
17. Townsend P, Phillimore P, Beattie, A (eds.). *Health and deprivation: Inequality and the North*. London: Croom Helm Ltd; 1987.
18. Bolland MJ, Avenell A, Grey A. Should adults take vitamin D supplements to prevent disease? *BMJ* 2016; **355**: i6201.
19. Laurencin CT, McClinton A. The COVID-19 Pandemic: a Call to Action to Identify and Address Racial and Ethnic Disparities. *J Racial Ethn Health Disparities* 2020.
20. Jakovac H. COVID-19 and vitamin D-Is there a link and an opportunity for intervention? *Am J Physiol Endocrinol Metab* 2020; **318**: E589.
21. Grant WB, Lahore H, McDonnell SL, Baggerly CA, French CB, Aliano JL et al. Evidence that Vitamin D Supplementation Could Reduce Risk of Influenza and COVID-19 Infections and Deaths. *Nutrients* 2020; **12**.

22. Rhodes JM, Subramanian S, Laird E, Anne Kenny R. Editorial: low population mortality from COVID-19 in countries south of latitude 35 degrees North - supports vitamin D as a factor determining severity. *Aliment Pharmacol Ther* 2020.
23. Sattar N, McInnes IB, McMurray JJV. Obesity a Risk Factor for Severe COVID-19 Infection: Multiple Potential Mechanisms. *Circulation* 2020.
24. Richardson S, Hirsch JS, Narasimhan M, et al. Presenting Characteristics, Comorbidities, and Outcomes Among 5700 Patients Hospitalized With COVID-19 in the New York City Area. *JAMA* 2020.
25. Liu W, Tao ZW, Lei W, Ming-Li Y, Kui L, Ling Z et al. Analysis of factors associated with disease outcomes in hospitalized patients with 2019 novel coronavirus disease. *Chin Med J (Engl)* 2020.
26. Miyara M, Tubach F, Pourcher V, Morelot-Panzini C, Pernet J, Haroche J. (2020) Low incidence of daily active tobacco smoking in patients with symptomatic COVID-19. *Qeios*. doi:10.32388/WPP19W.3.
27. Fry A, Littlejohns TJ, Sudlow C, Doherty N, Adamska L, Sprosen T et al. Comparison of Sociodemographic and Health-Related Characteristics of UK Biobank Participants With Those of the General Population. *Am J Epidemiol* 2017; **186**: 1026-34.
28. Meng JE, Hovey KM, Wactawski-Wende J, Andrews CA, Lamonte MJ, Horst RL et al. Intraindividual variation in plasma 25-hydroxyvitamin D measures 5 years apart among postmenopausal women. *Cancer Epidemiol Biomarkers Prev* 2012; **21**: 916-24.

### Author contributions

JPP and NS had the original concept. CEH undertook the statistical analyses. All authors interpreted the results. CEH, JPP and NS drafted the manuscript. All authors revised the manuscript and approved the final version.

### Acknowledgements

CEH is funded by Health Data Research-UK (Ref. Edin-1).

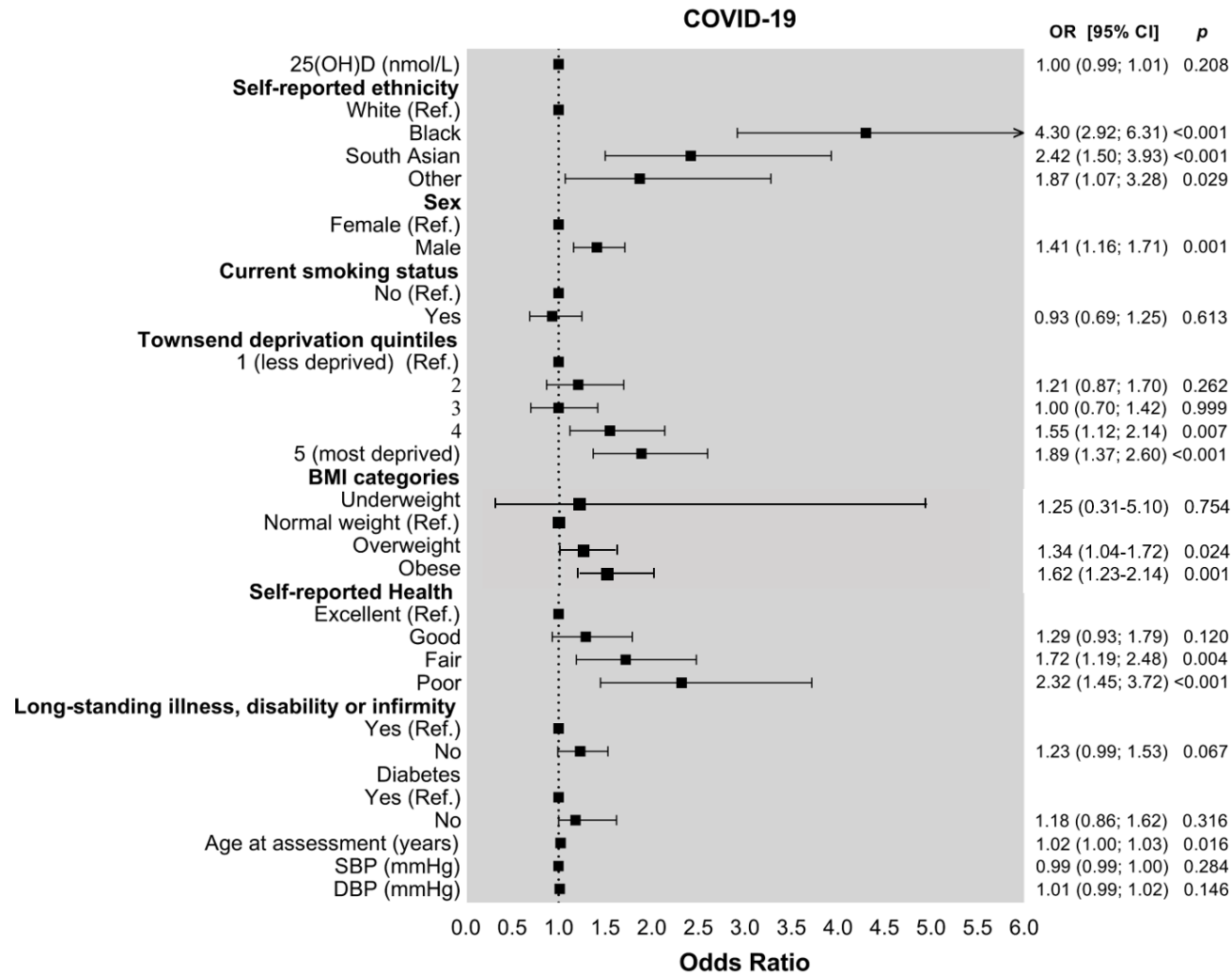
SVK acknowledges funding from a NRS Senior Clinical Fellowship (SCAF/15/02), the Medical Research Council (MC\_UU\_12017/13) and the Scottish Government Chief Scientist Office (SPHSU13).

CLN is supported by the Medical Research Council (MR/R024774/1).



NS receives funding from the British Heart Foundation Research Excellence Award (RE/18/6/34217).

Figure 1: Forest plot of factors associated with COVID-19 infection



**Table 1: Characteristics of study population by presence or absence of confirmed COVID-19 infection**

		No COVID-19	COVID-19	P value
		N (%)	N (%)	
Sex	Male	168,391 (48.37)	265 (59.02)	<0.001
	Female	179,758 (51.63)	184 (40.98)	
Self-reported ethnicity	White	331,464 (95.21)	385 (85.75)	<0.001
	Black	5,022 (1.44)	32 (7.13)	
	South Asian	5,917 (1.70)	19 (4.23)	
	Other	5,746 (1.65)	13 (2.90)	
Current smoking status	Yes	312,037 (89.63)	398 (88.64)	0.493
	No	36,112 (10.37)	51 (11.36)	
Townsend deprivation quintile	1	70,669 (20.30)	61 (13.59)	<0.001
	2	70,726 (20.31)	76 (16.93)	
	3	70,644 (20.29)	64 (14.25)	
	4	70,270 (20.18)	105 (23.39)	
	5	65,840 (18.91)	143 (31.85)	
BMI category	Underweight	1,759 (0.51)	2 (0.45)	<0.001
	Normal weight	115,410 (33.15)	95 (21.16)	
	Overweight	148,210 (42.57)	194 (43.21)	
	Obese	82,770 (23.77)	158 (35.19)	
Self-reported health rating	Excellent	60,508 (17.38)	45 (10.02)	<0.001
	Good	203,640 (58.49)	227 (50.56)	
	Fair	69,676 (20.01)	133 (29.62)	
	Poor	14,325 (4.11)	44 (9.80)	
Long-standing illness, disability or infirmity	Yes	237,470 (68.21)	245 (54.57)	<0.001
	No	110,679 (31.79)	204 (45.43)	
Diabetes	Yes	329,324 (94.59)	400 (89.09)	<0.001
	No	18,825 (5.41)	49 (10.91)	
		Median (IQR)	Median (IQR)	
Vitamin D		32.7 (10.0-47.2)	28.7 (10.0-43.8)	<0.01
Age at assessment		49 (38-57)	49 (40-58)	<0.05
SBP		138 (125-151)	138 (127-153)	0.177
DBP		82 (75-89)	83 (76-90)	<0.01

Categorical variables compared by  $\chi^2$  test; continuous variables compared by Mann-Whitney U test

N number; BMI body mass index; IQR inter-quartile range; SBP systolic blood pressure; DBP diastolic blood pressure

Table 2: Association between Vitamin D and confirmed COVID-19 infection

	Univariable		Multivariable*	
	OR (95% CI)	<i>p</i> -value	OR (95% CI)	<i>p</i> -value
Vitamin D (nmol/L)	0.99 (0.99 – 0.999)	0.013	1.00 (0.998 – 1.01)	0.208
Vitamin D deficient (<25nmol/L)	1.37 (1.07 – 1.76)	0.011	0.92 (0.71 – 1.21)	0.564
Vitamin D insufficient (<50nmol/L)	1.19 (0.99 – 1.44)	0.068	0.88 (0.72 – 1.08)	0.232

OR odds ratio; CI confidence interval

\*adjusted for ethnicity, sex, month of assessment, Townsend deprivation quintile, household income, self-reported health rating, smoking status, BMI category, age at assessment, diabetes, SBP, DBP, and long-standing illness, disability or infirmity

Table 3: Association between ethnicity and confirmed COVID-19 infection

	Univariable		Adjusted for Vitamin D concentration		Multivariable*	
	OR (95% CI)	<i>p</i> -value	OR (95% CI)	<i>p</i> -value	OR (95% CI)	<i>p</i> -value
White (referent)	1		1		1	
Black	5.49 (3.82 – 7.88)	<0.001	5.32 (3.68 – 7.70)	<0.001	4.30 (2.92 – 6.31)	<0.001
South Asian	2.76 (1.74 – 4.39)	<0.001	2.65 (1.65 – 4.25)	<0.001	2.42 (1.50 – 3.93)	<0.001
Other	1.95 (1.12 – 3.39)	0.018	1.90 (1.09 – 3.32)	0.024	1.87 (1.07 – 3.28)	0.029

OR odds ratio; CI confidence interval

\*also adjusted for sex, month of assessment, Townsend deprivation quintile, household income, self-reported health rating, smoking status, BMI category, age at assessment, diabetes, SBP, DBP, and long-standing illness, disability or infirmity