



THE UNIVERSITY *of* EDINBURGH

Edinburgh Research Explorer

## Genomic surveillance detects *Salmonella enterica* serovar Paratyphi A harbouring blaCTX-M-15 from a traveller returning from Bangladesh

**Citation for published version:**

Nair, S, Day, M, Godbole, G, Saluja, T, Langridge, GC, Dallman, TJ & Chattaway, M 2020, 'Genomic surveillance detects *Salmonella enterica* serovar Paratyphi A harbouring blaCTX-M-15 from a traveller returning from Bangladesh', *PLoS ONE*, vol. 15, no. 1, pp. e0228250.  
<https://doi.org/10.1371/journal.pone.0228250>

**Digital Object Identifier (DOI):**

[10.1371/journal.pone.0228250](https://doi.org/10.1371/journal.pone.0228250)

**Link:**

[Link to publication record in Edinburgh Research Explorer](#)

**Document Version:**

Publisher's PDF, also known as Version of record

**Published In:**

PLoS ONE

**General rights**

Copyright for the publications made accessible via the Edinburgh Research Explorer is retained by the author(s) and / or other copyright owners and it is a condition of accessing these publications that users recognise and abide by the legal requirements associated with these rights.

**Take down policy**

The University of Edinburgh has made every reasonable effort to ensure that Edinburgh Research Explorer content complies with UK legislation. If you believe that the public display of this file breaches copyright please contact [openaccess@ed.ac.uk](mailto:openaccess@ed.ac.uk) providing details, and we will remove access to the work immediately and investigate your claim.



## RESEARCH ARTICLE

# Genomic surveillance detects *Salmonella enterica* serovar Paratyphi A harbouring *bla*<sub>CTX-M-15</sub> from a traveller returning from Bangladesh

Satheesh Nair<sup>1\*</sup>, Martin Day<sup>1</sup>, Gauri Godbole<sup>1</sup>, Tranpriti Saluja<sup>2</sup>, Gemma C. Langridge<sup>3</sup>, Timothy J. Dallman<sup>1,4</sup>, Marie Chattaway<sup>1</sup>

**1** Gastrointestinal Bacteria Reference Unit, Public Health England, London, United Kingdom, **2** Department of Microbiology, City Hospital, Birmingham, United Kingdom, **3** Quadram Institute Bioscience, Norwich Research Park, Norwich, United Kingdom, **4** National Institute for Health Research Health Protection Research Unit, Gastrointestinal Infections, University of Liverpool, Liverpool, England

\* [Satheesh.nair@phe.gov.uk](mailto:Satheesh.nair@phe.gov.uk)



## OPEN ACCESS

**Citation:** Nair S, Day M, Godbole G, Saluja T, Langridge GC, Dallman TJ, et al. (2020) Genomic surveillance detects *Salmonella enterica* serovar Paratyphi A harbouring *bla*<sub>CTX-M-15</sub> from a traveller returning from Bangladesh. PLoS ONE 15(1): e0228250. <https://doi.org/10.1371/journal.pone.0228250>

**Editor:** Feng Gao, Tianjin University, CHINA

**Received:** October 31, 2019

**Accepted:** January 11, 2020

**Published:** January 30, 2020

**Copyright:** © 2020 Nair et al. This is an open access article distributed under the terms of the [Creative Commons Attribution License](https://creativecommons.org/licenses/by/4.0/), which permits unrestricted use, distribution, and reproduction in any medium, provided the original author and source are credited.

**Data Availability Statement:** Short-read FASTQ sequence for the *S. Paratyphi A* 440915 plasmid described in this study has been deposited in the NCBI Sequence Read Archive under GenBank accession number MK238490 and BioProject: PRJNA505238.

**Funding:** GL was supported by the BBSRC Institute Strategic Programme Microbes in the Food Chain BB/R012504/1.

**Competing interests:** The authors have declared that no competing interests exist.

## Abstract

Whole genome sequencing (WGS) has been used routinely by Public Health England (PHE) for identification, surveillance and monitoring of resistance determinants in referred *Salmonella* isolates since 2015. We report the first identified case of extended-spectrum-β-lactamase (ESBL) *Salmonella enterica* serovar Paratyphi A (*S. Paratyphi A*) isolated from a traveller returning to England from Bangladesh in November 2017. The isolate (440915) was resistant to ciprofloxacin and harboured both the mobile element ISEcp9-*bla*<sub>CTX-M-15</sub>-hp-tnpA and *bla*<sub>TEM-191</sub>, associated with ESBL production. Phenotypic resistance was subsequently confirmed by Antimicrobial Susceptibility Testing (AST). *S. Paratyphi A* 440915 harboured an IncI1 plasmid previously reported to encode ESBL elements in *Enterobacteriaceae* and recently described in a *S. Typhi* isolate from Bangladesh. Results from this study indicate the importance of monitoring imported drug resistance for typhoidal salmonellae as ceftriaxone is the first line antibiotic treatment for complicated enteric fever in England. We conclude that WGS provides a rapid, accurate method for surveillance of drug resistance genes in *Salmonella*, leading to the first reported case of ESBL producing *S. Paratyphi A* and continues to inform the national treatment guidelines for management of enteric fever.

## Introduction

Enteric fever is a systemic infection caused by the human adapted pathogens; *Salmonella enterica* serovar Typhi (*S. Typhi*) and *S. enterica* serovar Paratyphi (*S. Paratyphi*) A, B and C. Enteric fever continues to carry a burden of morbidity and mortality with an estimated ~28 million cases reported globally in 2000 [1]. *S. Paratyphi A* is the second most common cause of enteric fever after *S. Typhi* with approximately one *S. Paratyphi A* infection occurring for every four *S. Typhi* infections [1].

The greatest burden of illness is experienced by infants, children and adolescents in South-central and Southeast Asia [1]. As described for typhoid fever (caused by *S. Typhi*), paratyphoid fever is rare in industrialised countries although known to occur among travellers to endemic parts of the world [2][3]. In 2015, 18 EU/EEA countries reported a total of 845 confirmed cases, a notification rate of 0.23 cases per 100 000 population [4]. Between April 2015 and September 2018, Public Health England (PHE) reported an average of 115 cases in England and Wales of Paratyphoid A fever per year. The number of cases has been constant during this time period with a majority of cases acquired abroad; 54% were from travellers returning to the United Kingdom (UK) from the Indian subcontinent (<https://www.gov.uk/government/publications/typhoid-and-paratyphoid-laboratory-confirmed-cases-in-england-wales-and-northern-ireland>).

Antibiotic resistance in *S. Paratyphi* A is an emerging public health problem. Resistance to multiple first line antibiotics e.g. ampicillin, chloramphenicol and co-trimoxazole (multidrug resistance [MDR]) [5], nalidixic acid [6] and ciprofloxacin [7][8] has arisen in multiple countries since 2000. Alternative antimicrobial treatments, including third generation cephalosporins (ceftriaxone) or azithromycin, are increasingly used as first line therapies [9]. Recently, resistance to these newer drugs has been reported in enteric fever-causing salmonellae [10][11][12]. While these cases have largely been sporadic, a large-scale extensively drug resistant (XDR) *S. Typhi* outbreak began in Pakistan in 2016, harbouring resistance to third generation cephalosporins [13]. Resistance to ceftriaxone or other extended-spectrum  $\beta$ -lactams is usually due to the production of extended-spectrum- $\beta$ -lactamases (ESBLs) of which *bla*<sub>CTX-M</sub> type ESBLs are one of the determinants for cephalosporin resistance in *Salmonella* [14]. Many *bla*<sub>CTX-M</sub> variants are described in the literature, with *bla*<sub>CTX-M-9</sub>, *bla*<sub>CTX-M-14</sub> and *bla*<sub>CTX-M-15</sub> being the most commonly reported [15][16][17]. *bla*<sub>CTX-M</sub> type ESBLs are usually encoded by transmissible plasmids [18], hence routine surveillance of resistance determinants is essential to understand when and where populations may be affected.

WGS has been used at the PHE Gastrointestinal Bacterial Reference Unit (GBRU) since April 2015 for routine identification, surveillance, and detection of outbreak transmission events and Antimicrobial Resistance (AMR) determinants [3][19][20]. Through routine genomic surveillance in November 2017, we identified an ESBL-harboring *S. Paratyphi* A strain isolated from a traveller returning to the UK from Bangladesh. Here we report the characterisation, location and composition of the region encoding  $\beta$ -lactam resistance and suggest the possible transmission mechanism of this ESBL resistant *S. Paratyphi* A isolate imported into the UK.

## Materials and methods

### Case history

Enteric fever is a notifiable disease in the UK. Information was retrospectively collected from an enhanced surveillance questionnaire collected by the public health team from the case and hospital case notes.

### Bacterial isolate and phenotypic identification

A stool specimen submitted to the hospital in September 2017 was subjected to EntericBio, a rapid panbacterial PCR assay screening, and found to be *Salmonella* spp. PCR positive. The stool was cultured for *Salmonella* and the isolate was referred to GBRU for confirmation in November 2017. It was grown on selective media, MacConkey and chromogenic agar, to rule out contamination from other Enterobacteriaceae. A single colony was selected for inoculation into broth for WGS DNA extraction and grown in Mueller-Hinton agar for antimicrobial

susceptibility testing. Ethical approval for the detection of gastrointestinal bacterial pathogens from faecal specimens, or the identification, characterization and typing of cultures of gastrointestinal pathogens, submitted to GBRU is not required as covered by PHE's surveillance mandate.

### Antimicrobial susceptibility testing

Minimal inhibitory concentration (MICs) of the isolate were determined by agar dilution using Mueller–Hinton agar for the standard panel of antibiotics recommend by EUCAST. EUCAST breakpoints and screening concentration criteria were used for interpretation [21]. Confirmation of azithromycin MIC was performed by Etest<sup>VR</sup> (bioMérieux, France). Temocillin and cefoxitin were included in the panel to aid detection of OXA-48-like carbapenemases and AmpC production, respectively. ESBL detection was confirmed using aztreonam, cefotaxime/cefotaxime + clavulanic acid (4ug/mL, ceftazidime/ceftazidime + clavulanic acid (4ug/mL), cefepime/cefepime+clavulanic acid (4ug/mL).

### Whole genome sequencing and analysis

DNA extraction of the *Salmonella* isolate was carried out using a modified protocol of the Qiasymphony DSP DNA Midi Kit (Qiagen) as described in Nair *et al.* 2016 [22]. In brief, 0.7 mL of overnight *Salmonella* broth culture was harvested. Bacterial cells were pre-lysed in 220  $\mu$ L of ATL buffer (Qiagen) and 20  $\mu$ L of Proteinase K (Qiagen), and incubated with shaking for 30 min at 56°C. Four microlitres of RNase at 100 mg/mL (Qiagen) was added to the lysed cells, which were then re-incubated for a further 15 min at 37°C. DNA from the treated cells was then extracted on the Qiasymphony SP platform (Qiagen) and eluted in 100  $\mu$ L of water. Extracted DNA was fragmented and tagged for multiplexing with NEXTERA XT DNA Sample Preparation Kits, followed by paired-end sequencing on an Illumina HiSeq platform to produce 101 bp paired-end reads (Illumina, Cambridge, UK).

Resistance genes were determined using Genefinder, a customised algorithm that uses Bowtie 2 to map reads to a set of reference sequences and Samtools to generate an mpileup file [23], as previously described Day *et al.* 2018 [3]. Briefly, the data are parsed based on read coverage of the query sequence (100%), consensus base-call on variation (>85%) and the nucleotide identity (>90%) to determine the presence of the reference sequence or nucleotide variation within that sequence.  $\beta$ -Lactamase variants were determined with 100% identity using the reference sequences downloaded from the Lahey ([www.lahey.org](http://www.lahey.org)) or NCBI (<https://www.ncbi.nlm.nih.gov/pathogens/beta-lactamase-data-resources>)  $\beta$ -lactamase data resources. Known acquired resistance genes and resistance-conferring mutations relevant to  $\beta$ -lactams, fluoroquinolones, aminoglycosides, chloramphenicol, macrolides, sulphanomides, tetracyclines, trimethoprim, rifamycins and Fosfomycin were included in the analysis [24][25].

Sequence type (ST), eBurst Group (eBG) and serovar were determined from the genome data using MOST v1.0 as previously described [26][27].

PlasmidFinder v2.1 (<http://cge.cbs.dtu.dk/services/PlasmidFinder/>) was used to detect the presence of known replicon types of plasmids in the isolates studied [28].

### Location and characterization of region encoding $\beta$ -lactam resistance

*De novo* assembly graphs (in FASTG format) produced by Spades v3.7.0 were visualized using Bandage v0.8.1 (<http://github.com/rrwick/Bandage>) [29]. BLAST analysis ([blast.ncbi.nlm.nih.gov/Blast.cgi](http://blast.ncbi.nlm.nih.gov/Blast.cgi)) was conducted to detect the antimicrobial resistance genes (*bla*<sub>BLACTX-M-15</sub> and the ISEcp9 mobile insertion sequence) and their location in the assembly graph. Comparisons with previously described IncI1 plasmids associated with  $\beta$ -lactam resistance from *S. Typhi*

[pPRJEB21992](EMBL-EBI BioProject PRJEB21992) and *S. Enteritidis* [pSE115] (GenBank accession number KT868530) [30][31] were also undertaken with BLAST. Prokka v1.12 was used to annotate genome sequences (<http://www.ncbi.nlm.nih.gov/pubmed/24642063>) [32] and Artemis v18.00 ([www.sanger.ac.uk/resources/software/artemis](http://www.sanger.ac.uk/resources/software/artemis)) used to visualize the resistance region. Default settings were used for all the bioinformatics tools used in this study.

**Pairwise BLAST comparison of IncI1 plasmids harbouring  $\beta$ -lactam resistance.** Plasmids from *S. Typhi* (BioProject PRJEB21992) [30], *S. Enteritidis* (KT868530) [31] and *S. Enteritidis* (accession NC\_018659) were selected for comparison using the following two criteria: (i) the presence of the same mobile element and resistance gene (ISEcp9 and (*bla*<sub>BLACTX-M-15</sub>)) and (ii) the same IncI1 incompatibility group as the plasmid from isolate 440915 being investigated. FASTA files from all plasmids were compared and visualised using BRIG v0.95 [33]. The plasmid fasta was extracted for pPRJEB21992 from a plasmid SPAdes assembly performed on the genome sequence data from accession PRJEB21992 [34] (version 3.11.1, '-careful'). The orientation and position of specific genes was drawn using Easyfig v 2.1 [35].

**Nucleotide sequence accession number.** Short-read FASTQ sequence for the *S. Paratyphi* A 440915 plasmid described in this study has been deposited in the NCBI Sequence Read Archive under GenBank accession number MK238490 and BioProject PRJNA505238.

**Phylogenetic analysis.** To place isolate 440915 in context of the *S. Paratyphi* A population, SNP analysis was performed on the 439 isolates of *S. Paratyphi* A referred to PHE from 1st April 2014 to December 2017 (S1 Table). The PHE isolates were supplemented with 20 genome sequences from Zhou *et al.* 2018 [36] with representatives covering the 7 described lineages (A–G). Illumina reads were quality trimmed [37] with bases removed from the forward and trailing end with a PHRED score of less than 30. Reads were mapped to the *S. Paratyphi* A reference genome ATCC 9150 (Genbank accession CP000026.1) using BWA-MEM v.0.7.12 [38]. SNPs were identified using GATK v.2.6.5 [39] in unified genotyper mode. Core genome positions that had a highquality SNP (>90% consensus, minimum depth 10x, GQ >= 30) in at least one isolate were extracted using SnapperDB v0.2.5 [40] and processed through Gubbins v2.0.0 [41] to account for recombination events. RaxML v.8.1.17 [42] was used to derive the maximum likelihood phylogeny of the isolates using the GTRCAT substitution model with the automatic bootstrapping criteria 'autoMRE'. FASTQ reads from all sequences in this study can be found at the PHE Pathogens BioProject at the National Centre for Biotechnology Information (Accession PRJNA248792).

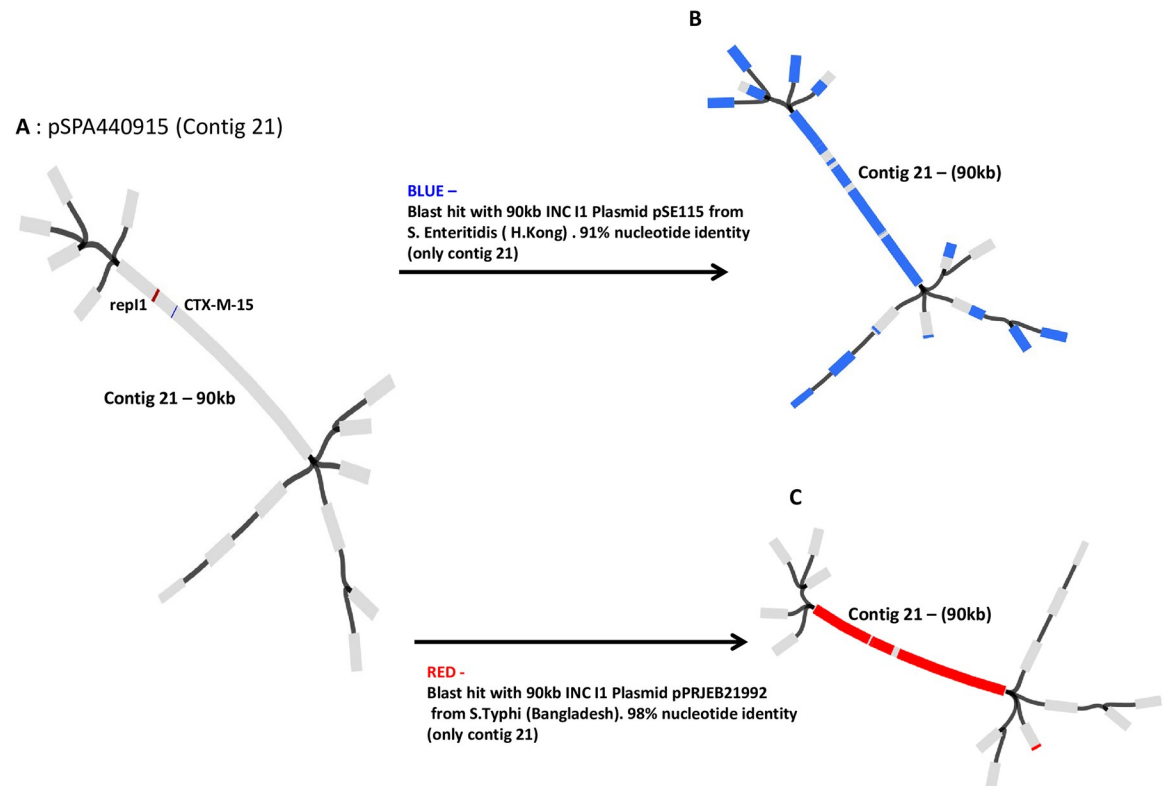
## WGS process

The whole WGS process, from growing bacterial cells to interpreting sequence data for identification, AMR characterisation and high throughput single nucleotide polymorphism typing for surveillance requires approximately 5 days. A rapid turnaround time considering the amount of data obtained.

## Results

A 44 year old male patient who had returned to England from a 6 week trip to Bangladesh in September 2017 was diagnosed with infective colitis. From a stool specimen, an enteric PCR was positive for *Salmonella* spp; the stool cultured a presumptive *S. Paratyphi* A that was resistant to quinolones, and sensitive to azithromycin. The isolate was sent to GBRU and confirmed as *S. Paratyphi* A (isolate 440915) in November 2017 by WGS. Further case details are given in Supplementary Data (S1 Data).

Our WGS analysis revealed *S. Paratyphi* A 440915 to be an ESBL-producing strain encoding both *bla*<sub>BLACTX-M-15</sub> and a *bla*<sub>TEM-191</sub>. A point mutation conferring resistance to



**Fig 1. Bandage analysis of the resistant *S. Paratyphi* A 440915 isolate.** A SPAdes assembly of the sequence regions (contigs) associated with drug resistance from isolate 440915. Bandage allows visualization of how contigs (in gray) are possibly connected (in black) to each other. (A) ~90kb plasmid pSPA440915 (contig 21) was assembled from the complete genome sequence of *S. Paratyphi* A 440915. ESBL resistant *bla*<sub>CTX-M-15</sub> gene (blue) and *repI1* indicating IncI1 plasmid replicon were blasted against the assembled pSPA440915, and their location determined (on contig 21). (B) Plasmid pSE115 from *S. Enteritidis* (Gene Bank accession number: KT868530) was blasted against pSPA440915. Blast hits in blue (only in contig 21) indicates a 91% sequence similarity between both plasmids. *repI1* present. *bla*<sub>CTX-M-14</sub> present instead of a *bla*<sub>CTX-M-15</sub> gene. Blast Hits (blue) outside of contig 21—mainly short repeat sequences (insertion elements). (C) Plasmid pPRJEB21992 from *S. Typhi* (EMBL-EBI BioProject PRJEB21992) was blasted against pSPA440915. Blast hits in red (only in contig 21) indicates a 98% sequence similarity between both plasmids, including the *repI1*, *bla*<sub>CTX-M-15</sub> and *bla*<sub>TEM-191</sub>.

<https://doi.org/10.1371/journal.pone.0228250.g001>

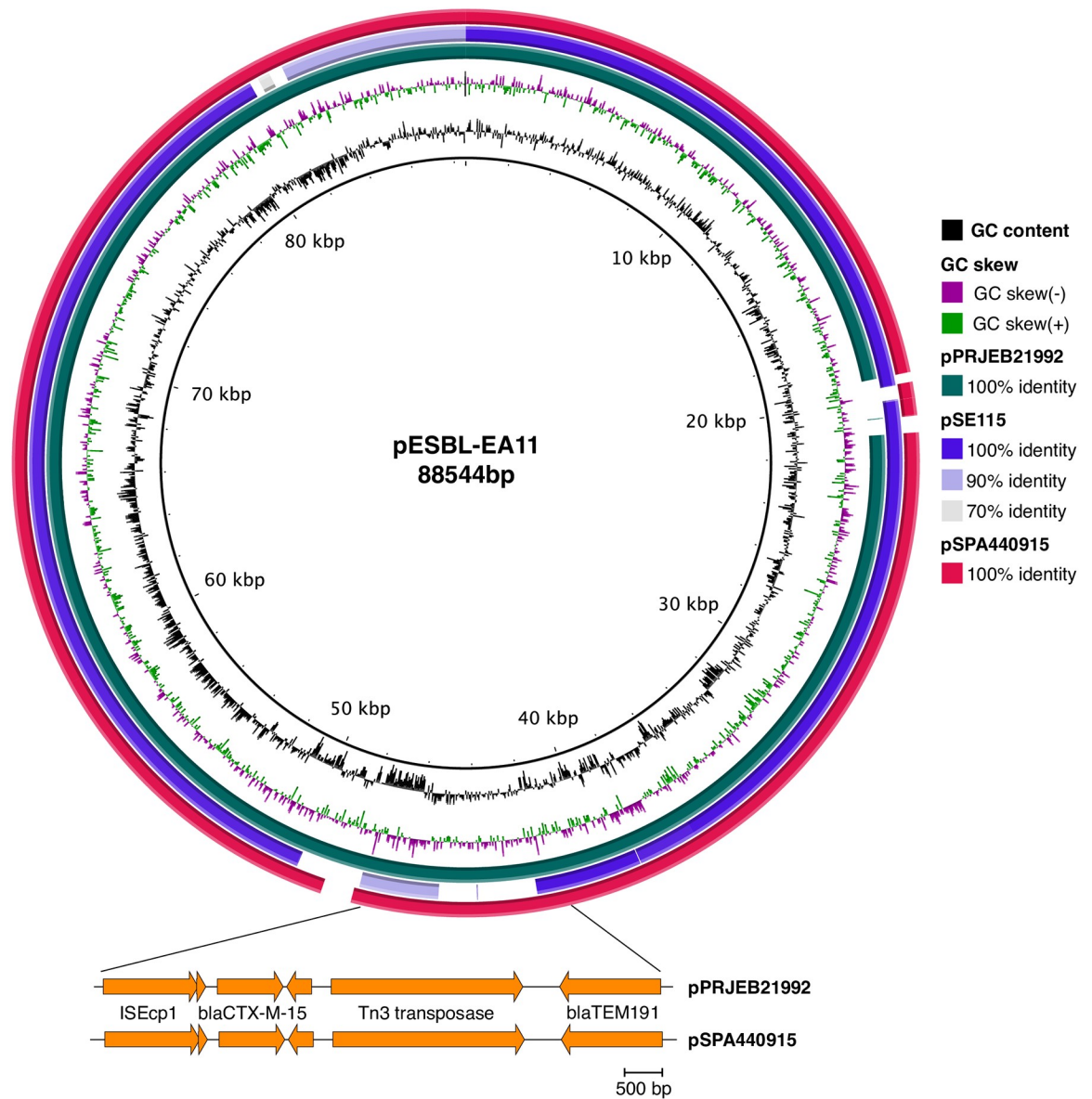
quinolones was detected in *gyrA* [83:S-F]. ESBL production was phenotypically confirmed with cefotaxime clavulanic acid synergy. The ciprofloxacin MIC was 0.75 mg/L and the isolate was sensitive to azithromycin (8 mg/L).

Both Bandage and BLAST analysis confirmed the *bla*<sub>CTX-M-15</sub>, *bla*<sub>TEM-191</sub> and *repI1* (IncI1 plasmid replicon) genes to be present on a 90 kb contig, subsequently confirmed using PlasmidFinder to be an IncI1 plasmid (Fig 1A). Plasmid pSPA440915 was highly similar to two previously reported ~90kb IncI1 plasmids: *S. Enteritidis* plasmid pSE115 (91% nucleotide identity) isolated in Hong Kong [31] (Fig 1B) and *S. Typhi* plasmid pPRJEB21992 (98% identity) from Bangladesh [30] (Fig 1C).

The ESBL mobile drug cassette ISEcp9-*bla*<sub>CTX-M-15</sub>-hp-tnpA with an additional *bla*<sub>TEM-191</sub> was identified in the plasmids belonging to *S. Typhi* PRJEB21992 and *S. Paratyphi* A 440915, both from Bangladesh (Figs 1A, 1C and 2). A different ESBL mobile element, ISEcp9-*bla*<sub>CTX-M-14</sub>-tnpA was mapped to the *S. Enteritidis* plasmid pSE115 (Fig 2).

Isolate 440915 was confirmed as *S. Paratyphi* A multi locus sequence type (ST)129, a member of serovar Paratyphi A eBURST group 11. *S. Paratyphi* A 440915 clusters in lineage A of the *S. Paratyphi* A population as defined by Zhou *et al.* 2014 [36]. Within lineage A, isolate 440915 belongs to a monophyletic clade with 29 other isolates from cases reported through





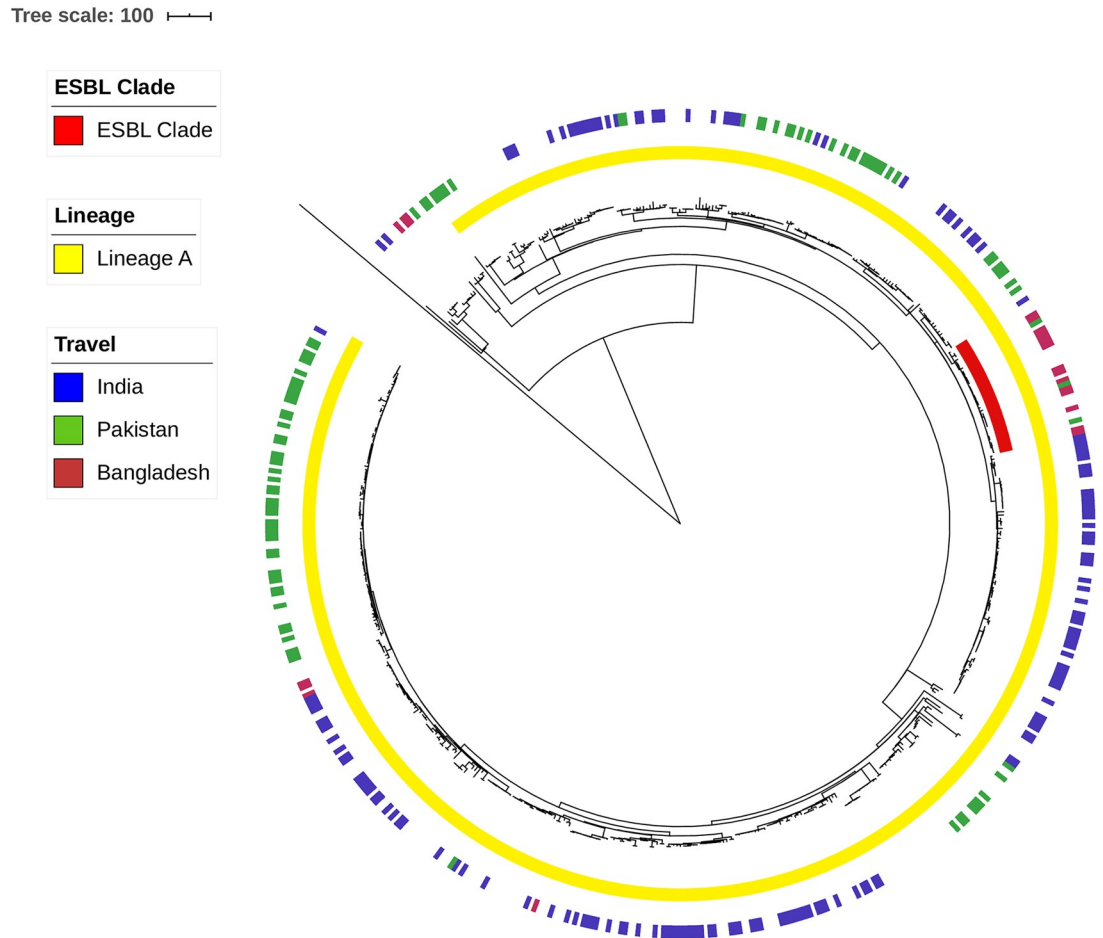
**Fig 2. Pairwise BLAST comparisons of IncI1 plasmids against *E. coli* plasmid *pESBL\_EA11* (inner ring, black line) generated using BRIG [33].** Ring 2 and 3 represent GC content (black) and GC skew (purple/green). Ring 3 (teal): *S. Typhi* plasmid *pPRJEB21992*; ring 4 (purple): *S. Enteritidis* plasmid *pSE115*; ring 5 (red): *S. Paratyphi A* plasmid *pSPA440915*. Expanded region (genes in orange) indicating presence of beta lactamases, drawn using Easyfig [35]. Presence of ESBL mobile drug cassette *ISEcp1*, *bla*<sub>CTX-M-15</sub> and *bla*<sub>191</sub> in both the Bangladesh *S. Typhi* and *S. Paratyphi A* 440915 isolate.

<https://doi.org/10.1371/journal.pone.0228250.g002>

GBRUs routine surveillance. Of these cases 16/29 (55%) reported recent travel to Bangladesh, 2/29 reported travel to Pakistan, 1/29 reported no travel and the remaining 10 cases had no travel information available. Within this clade all isolates harboured a single mutation in *gyrA* [83:S-F] conferring resistance to ciprofloxacin; no other resistant determinants were detected (Fig 3).

## Discussion

This study reports the first ESBL-producing *S. Paratyphi A* isolated in the UK using PHE's WGS-based surveillance for AMR determinants [3][19]



**Fig 3. Recombination free maximum likelihood phylogeny of 459 isolates including 20 reference isolates from Zhou *et al.* 2014 [36].** Middle ring (yellow) represents isolates that cluster into lineage A. Inner ring (red) represents the clade isolate 440915 clusters in. Outer ring represents country of travel for UK cases (Burgundy–Bangladesh, Blue–India, Green–Pakistan).

<https://doi.org/10.1371/journal.pone.0228250.g003>

CTX-M enzymes have emerged and disseminated worldwide since the early 2000s and have become the dominant ESBLs in Enterobacteriaceae in both hospitals and community settings [43][44]. It is unsurprising that isolate 440915 harboured *bla*<sub>CTX-M-15</sub> on an IncI1 plasmid; these plasmids have been most frequently associated with *bla*<sub>CTX-M</sub> type ESBL carriage [45], are transmissible between enteric pathogens [46] and commonly found in the Enterobacteriaceae. IncI1 plasmids have also been shown to have no biological cost on the fitness of *E. coli* isolates harbouring them [47] which means they may be maintained even in the absence of selective antibiotic pressure. The high nucleotide identity between ISEcp9-*bla*<sub>CTX-M-15</sub>-hp-tnpA in *S. Typhi* PRJEB21992 [30] and the current *S. Paratyphi A* 440915 isolate in this study makes it plausible to speculate that one transmitted to the other and hence supports the transmissible nature of ISEcp9 linked to  $\beta$ -lactam resistance [48].

ESBL-carrying *S. Paratyphi A* and *S. Typhi* isolates were not seen globally or particularly in Europe until recently [10][13][49][50]. The ESBL *S. Typhi* isolate recently reported from Bangladesh was the second isolate since 2000 [30]. A global population structure study by Zhou *et al.* 2018 [36] classified *S. Paratyphi A* into seven lineages with lineages A and C being the most dominant. The phylogenetic analysis described here indicates that *S. Paratyphi A* 440915 is closely related to *S. Paratyphi A* belonging to lineage A, circulating in Bangladesh and the



Indian subcontinent (Fig 3). We therefore postulate that the dissemination of ESBL resistance can be sustained by different mechanisms including the horizontal dissemination of this transferable IncI1 plasmid or transposition of the mobile element (ISEcp9- *bla*<sub>CTX-M-15</sub>-hp-tnpA) within this closely related lineage. We believe it is only a matter of time until the ISEcp9 *bla*<sub>CTX-M-15</sub>-hp-tnpA mobile element (or a variation) inserts into a successful chromosomal background, as seen with the recent outbreak in Pakistan caused by *S. Typhi* H58 and an IncY plasmid [13].

This ESBL *S. Paratyphi* A 440915 isolate and recent sporadic and outbreak ESBL enteric fever cases reported in the UK, Germany and Pakistan [13][49][50] indicate the need for active surveillance in the UK for cases returning from the Indian subcontinent. In the UK, the standard empirical treatment for complicated enteric fever from South Asia has continued to be third-generation cephalosporins. Diagnostic laboratories in England usually perform AST on faecal isolates of typhoidal salmonellae with antibiotics such as azithromycin and ciprofloxacin, using gradient assays like E-tests (bioMerieux, France). However, in order to avoid treatment failures, AST should be routinely performed accordingly to EUCAST guidelines on all presumptive isolates (faecal and invasive) of *S. Paratyphi* and *S. Typhi* specifically looking for ceftriaxone resistance. Even though WGS predicts AMR determinants it is not used for clinical management and hence ceftriaxone resistant strains are phenotypically tested to assess ESBL production [51] to tailor clinical treatment. Treatment should be tailored depending on the AST. The patient in this case fully recovered from the illness and had negative clearance specimens one year later despite not being treated with the appropriate antibiotics (refer to S1 Data). Although paratyphoid is a milder illness than typhoid fever, further research is required to monitor outcomes of ESBL producing strains including enhanced clinical surveillance to assess whether the clinical outcome includes relapses.

## Conclusion

Extended spectrum  $\beta$ -lactamase producing *S. Paratyphi* A has been identified in the UK from the Indian subcontinent through PHE's use of routine WGS. Routine WGS provides a rapid and accurate method for surveillance of drug resistance genes and can inform the national treatment guidelines for management of enteric fever. WGS data as obtained by GBRU also allows passive surveillance to monitor the spread of drug resistant *S. Typhi* and *S. Paratyphi* and to detect outbreaks, as well as to serve as a sentinel surveillance for drug resistant enteric fever agents circulating in different regions of the world where the disease is endemic.

## Supporting information

**S1 Table. Isolates that were SNP analysed.**

(XLSX)

**S1 Data. Case history of patient.**

(DOCX)

## Acknowledgments

We thank David Grieg for help in submitting the plasmid sequence to GenBank.

## Author Contributions

**Conceptualization:** Satheesh Nair, Marie Chattaway.

**Formal analysis:** Satheesh Nair, Martin Day, Gemma C. Langridge, Timothy J. Dallman, Marie Chattaway.

**Investigation:** Gauri Godbole, Tranprit Saluja.

**Methodology:** Satheesh Nair, Gauri Godbole, Gemma C. Langridge.

**Software:** Gemma C. Langridge, Timothy J. Dallman.

**Writing – original draft:** Satheesh Nair, Gauri Godbole, Timothy J. Dallman, Marie Chattaway.

**Writing – review & editing:** Satheesh Nair, Martin Day, Gauri Godbole, Tranprit Saluja, Gemma C. Langridge, Timothy J. Dallman, Marie Chattaway.

## References

1. Crump JA, Mintz ED. Global trends in typhoid and paratyphoid fever. *CID* 2010; 50:241–245.
2. Threlfall EJ, Fisher IS, Berghold C, Gerner-Smidt P, Tschape H, Cormican M, et al. Trends in antimicrobial drug resistance in Europe, 1999–2001. *Int J Antimicrobial Agents* 2003; 22:487–91.
3. Day RM, Doumith M, Do Nascimento V, Nair S, Ashton PM, Jenkins C, et al. Comparison of phenotypic and WGS-derived antimicrobial resistance profiles of *Salmonella enterica* serovars Typhi and Paratyphi. *J Antimicrob Chemother* 2018; 73: 365–372. <https://doi.org/10.1093/jac/dkx379> PMID: 29216342
4. European Centre for Disease Prevention and Control. Typhoid and paratyphoid fever. In: ECDC. Annual Epidemiological report for 2015. Stockholm: ECDC; 2018. <https://ecdc.europa.eu/en/publications-data/typhoid-and-paratyphoid-fever-annual-epidemiological-report-2015#no-link>
5. Mohanty S, Renuka K, Sood S, Das BK, Kapil A. Antibiogram pattern and seasonality of *Salmonella* serotypes in a North Indian tertiary care hospital. *Epidemiol Infect* 2006 134:961–966. <https://doi.org/10.1017/S0950268805005844> PMID: 16476168
6. Woods CW, Murdoch DR, Zimmerman MD, Glover WA, Basnyat B, Wolf L, et al. Emergence of *Salmonella enterica* serotype Paratyphi A as a major cause of enteric fever in Kathmandu, Nepal. *Trans R Soc Trop Med Hyg* 2006; 100:1063–1067. <https://doi.org/10.1016/j.trstmh.2005.12.011> PMID: 16714040
7. Maskey AP, Basnyat B, Thwaites GE, Campbell JI, Farrar JJ, Zimmerman MD. Emerging trends in enteric fever in Nepal: 9124 cases confirmed by blood culture 1993–2003. *Trans R Soc Trop Med Hyg* 2008; 102(1):91–5. <https://doi.org/10.1016/j.trstmh.2007.10.003> PMID: 18023462
8. Adachi T, Sagara H, Hirose K, Watanabe H. Fluoroquinolone-resistant *Salmonella* Paratyphi A. *Emerg Infect Dis* 2005; 11:172–174. <https://doi.org/10.3201/eid1101.040145> PMID: 15714664
9. Wain J, Hendriksen RS, Mikoleit ML, Keddy K, Ochiai RL. Typhoid fever. *Lancet* 2015; 385:1136–45. [https://doi.org/10.1016/S0140-6736\(13\)62708-7](https://doi.org/10.1016/S0140-6736(13)62708-7) PMID: 25458731
10. Mawatari M, Kato Y, Hayakawa K, Morita M, Yamada K, Mezaki K, et al. *Salmonella enterica* serotype Paratyphi A carrying *bla*<sub>CTX-M-15</sub> type extended-spectrum beta-lactamase isolated from a Japanese traveller returning from India to Japan. *Euro Surveill* 2013; 18(46). Available online: <http://www.eurosurveillance.org/ViewArticle.aspx?ArticleId=20632>
11. Molloy A, Nair S, Cooke FJ, Wain J, Farrington M, Lehner PJ, et al. First report of *Salmonella enterica* serotype Paratyphi A azithromycin resistance leading to treatment failure. *J Clin Microbiol* 2010; 48(12):4655–7. <https://doi.org/10.1128/JCM.00648-10> PMID: 20943875
12. Ahsan S, Rahman S. Azithromycin Resistance in Clinical Isolates of *Salmonella enterica* Serovars Typhi and Paratyphi in Bangladesh. *Microbial Drug Resis* 2019; 25:8–13.
13. Klemm EJ, Shakoor S, Page AJ, Qamar FN, Judge K, Saeed DK, et al. Emergence of an Extensively Drug-Resistant *Salmonella enterica* Serovar Typhi Clone Harboring a Promiscuous Plasmid Encoding Resistance to Fluoroquinolones and Third-Generation Cephalosporins. *mBio* 2018; 9:e00105–18. <https://doi.org/10.1128/mBio.00105-18> PMID: 29463654
14. Su LH, Chiu CH, Chu C, Ou JT. Antimicrobial resistance in nontyphoid *Salmonella* serotypes: a global challenge. *Clin Infect Dis* 2004; 39: 546–551. <http://dx.doi.org/10.1086/422726> PMID: 15356819
15. Hopkins KL, Liebana E, Villa L, Batchelor M, Threlfall EJ, Carattoli A. Replicon typing of plasmids carrying CTX-M or CMY beta lactamases circulating among *Salmonella* and *Escherichia coli* isolates. *Antimicrob Agents Chemother* 2006; 50:3203–3206. <http://dx.doi.org/10.1128/AAC.00149-06> PMID: 16940132

16. Jean SS, Hsueh PR. High burden of antimicrobial resistance in Asia. *Int J Antimicrob Agents* 2011; 37:291–295. <http://dx.doi.org/10.1016/j.ijantimicag.2011.01.009>, PMID: 21382699
17. Xia S, Hendriksen RS, Xie Z, Huang L, Zhang J, Guo W, et al. Molecular characterization and antimicrobial susceptibility of *Salmonella* isolates from infections in humans in Henan Province, China. *J Clin Microbiol* 2009; 47:401–409. <http://dx.doi.org/10.1128/JCM.01099-08> PMID: 19073874
18. Carattoli A. Resistance plasmid families in Enterobacteriaceae. *Antimicrob Agents Chemother* 2009; 53:2227–2238. <http://dx.doi.org/10.1128/AAC.01707-08> PMID: 19307361
19. Ashton PM, Nair S, Peters T, Bale J, Powell D, Painset A, et al. Identification of *Salmonella* for public health surveillance using whole genome sequencing. *PeerJ* 2016; 4:e1752. <https://doi.org/10.7717/peerj.1752> PMID: 27069781
20. Neuert S, Nair S, Day MR, Doumith M, Ashton PM, Mellor KC, et al. Prediction of phenotypic antimicrobial resistance profiles from whole genome sequences of non-typhoidal *Salmonella enterica*. *Front Microbiol* 2018. 27; 9:592. <https://doi.org/10.3389/fmicb.2018.00592> eCollection 2018. PMID: 29636749
21. The European Committee on Antimicrobial Susceptibility Testing. Routine and extended internal quality control for MIC determination and disk diffusion as recommended by EUCAST. Version 9.0. 2019; <http://www.eucast.org>
22. Nair S, Ashton P, Doumith M, Connell S, Painset A, Mwaigwisya S, et al. WGS for surveillance of antimicrobial resistance: a pilot study to detect the prevalence and mechanism of resistance to azithromycin in a UK population of non-typhoidal *Salmonella*. *J Antimicrobial Chemother* 2016; 71(12):3400–3408.
23. Langmead B, Salzberg SL. Fast gapped-read alignment with Bowtie 2. *Nat Methods* 2012; 9:357–9. <https://doi.org/10.1038/nmeth.1923> PMID: 22388286
24. Day M, Doumith M, Jenkins CD, Dallman TJ, Hopkins KL, Elson R, et al. Antimicrobial resistance in Shiga toxin-producing *Escherichia coli* serogroups O157 and O26 isolated from human cases of diarrhoeal disease in England, 2015. *J Antimicrob Chemother* 2017; 72:145–52. <https://doi.org/10.1093/jac/dkw371> PMID: 27678285
25. Sadouki Z, Day MR, Doumith M, Chattaway MA, Dallman TJ, Hopkins KL, et al. Comparison of phenotypic and WGS derived antimicrobial resistance profiles of *Shigella sonnei* isolated from cases of diarrhoeal disease in England and Wales 2015. *J Antimicrob Chemother* 2017; 72:2496–502. <https://doi.org/10.1093/jac/dkx170> PMID: 28591819
26. Tewolde R, Dallman T, Schaefer U, Sheppard CL, Ashton P, Pichon B, et al. MOST: a modified MLST typing tool based on short read sequencing. *Peer J* 2016; 4:e2308. <https://doi.org/10.7717/peerj.2308> PMID: 27602279
27. Achtman M, Wain J, Weill FX, Nair S, Zhou Z, Sangal V, et al. Multilocus sequence typing as a replacement for serotyping in *Salmonella enterica*. *PLoS Pathog* 2012; 8: e1002776. <https://doi.org/10.1371/journal.ppat.1002776> PMID: 22737074
28. Carattoli A, Zankari E, Garcia-Fernandez A, Voldby Larsen M, Lund O, Villa L, et al. In silico detection and typing of plasmids using PlasmidFinder and plasmid multilocus sequence typing. *Antimicrob Agents Chemother* 2014; 58: 3895–903. <https://doi.org/10.1128/AAC.02412-14> PMID: 24777092
29. Wicks RR, Schultz MB, Zobel J, Holt KE. Bandage: interactive visualisation of de novo genome assemblies. *Bioinformatics* 2015; 31: 3350–2. <https://doi.org/10.1093/bioinformatics/btv383> PMID: 26099265
30. Djeghout B, Saha S, Sajib MSI, Tanmoy AM, Islam M, Kay GL, et al. Ceftriaxone-resistant *Salmonella* Typhi carries an Inc11-ST31 plasmid encoding BLACTX-M-15. *J Med Microbiol* 2018; <https://doi.org/10.1099/jmm.0.000727> PMID: 29616895
31. Wong MH, Biao K, Cjan EW, Yan M, Chen S. Inc11 plasmids carrying various *bla*<sub>CTX-M</sub> genes contribute to ceftriaxone resistance in *Salmonella enterica* Serovar Enteritidis in China. *Antimicrob Agents Chemother* 2016; 60:982–989. <https://doi.org/10.1128/AAC.02746-15> PMID: 26643327
32. Seeman T. Prokka: rapid prokaryotic genome annotation. *Bioinformatics* 2014; 30: 2068–9. <https://doi.org/10.1093/bioinformatics/btu153> PMID: 24642063
33. Alikhan NF, Petty NK, Ben Zakour NL, Beatson SA. BLAST Ring Image Generator (BRIG): simple prokaryote genome comparisons. *BMC Genomics* 2011; 12:402. <https://doi.org/10.1186/1471-2164-12-402> PMID: 21824423
34. Nurk S, Bankevich A, Antipov D, Gurevich AA, Korobeynikov A, Lapidus A, et al. Assembling single-cell genomes and mini-metagenomes from chimeric MDA products. *J Computational Biol* 2013; 20(10):714–737.
35. Sullivan MJ, Petty NK, Beatson SA. Easyfig: a genome comparison visualiser. *Bioinformatics* 2011; 27: 1009–10. <https://doi.org/10.1093/bioinformatics/btr039> PMID: 21278367
36. Zhou Z, McCann A, Weill FX, Blin C, Nair S, Wain J, et al. Transient Darwinian selection in *Salmonella enterica* serovar Paratyphi A during 450 years of global spread of enteric fever. *PNAS* 2014; 111:12199–12204.

37. Bolger AM, Lohse M, Usadel B. Trimmomatic: A flexible trimmer for Illumina Sequence Data. *Bioinformatics* 2014; 30(15):2114–20. <https://doi.org/10.1093/bioinformatics/btu170> PMID: 24695404
38. Li H, Durbin R. Fast and accurate long-read alignment with Burrows-Wheeler transform. *Bioinformatics* 2010; 26(5):589–95. <https://doi.org/10.1093/bioinformatics/btp698> Epub 2010 Jan 15 PMID: 20080505
39. McKenna A, Hanna M, Banks E, Sivachenko A, Cibulskis K, Kernysky A, et al. The Genome Analysis Toolkit: a MapReduce framework for analyzing next-generation DNA sequencing data. *Genome Res* 2010; 20(9):1297–303. <https://doi.org/10.1101/gr.107524.110> PMID: 20644199
40. Dallman T, Ashton P, Schafer U, Jironkin A, Painset A, Shaaban S, et al. SnapperDB: A database solution for routine sequencing analysis of bacterial isolates. *Bioinformatics* 2018; <https://doi.org/10.1093/bioinformatics/bty212> PMID: 29659710
41. Croucher NJ, Page AJ, Connor TR, Delaney AJ, Keane JA, Bentley SD, et al. Rapid phylogenetic analysis of large samples of recombinant bacterial whole genome sequences using Gubbins. *Nucleic Acids Res* 2014; 43(3):e15. <https://doi.org/10.1093/nar/gku1196> PMID: 25414349
42. Stamatakis A. RAxML Version 8: A tool for Phylogenetic Analysis and Post-Analysis of Large Phylogenies. *Bioinformatics* 2014; 30(9):1312–13. <https://doi.org/10.1093/bioinformatics/btu033> PMID: 24451623
43. D'Andrea MM, Arena F, Pallecchi L, Rossolini GM. CTX-M-type  $\beta$ -lactamases: a successful story of antibiotic resistance. *Int J Med Microbiol* 2013; 303:305–317. <http://dx.doi.org/10.1016/j.ijmm.2013.02.008> PMID: 23490927
44. Cantón R, González-Alba JM, Galán JC. CTX-M enzymes: origin and diffusion. *Front Microbiol* 2012; 3:110. <http://dx.doi.org/10.3389/fmicb.00110> PMID: 22485109
45. Carattoli A. Plasmids and the spread of resistance. *Int J Med Microbiol* 2013; 303:298–304. <http://dx.doi.org/10.1016/j.ijmm.2013.02.001> PMID: 23499304
46. Rozwandowicz M, Brouwer MSM, Fischer J, Wagenaar JA, Gonzalez-Zorn B, Guerra B, et al. Plasmids carrying antimicrobial resistance genes in Enterobacteriaceae. *J Antimicrob Chemother* 2018; 73(5):1121–1137. <https://doi.org/10.1093/jac/dkx488> PMID: 29370371
47. Riccobono E, Di Pilato V, Di Maggio T, Revollo C, Bartoloni A, Pallecchi L, et al. Characterization of IncI1 sequence type 71 epidemic plasmid lineage responsible for the recent dissemination of CTX-M-65 extended-spectrum  $\beta$ -lactamase in the Bolivian Chaco region. *Antimicrob Agents Chemother* 2015; 59:5340–5347. <https://doi.org/10.1128/AAC.00589-15> PMID: 26100713
48. Poirel L, Decousser JW, Nordmann P. Insertion sequence ISEcp1B is involved in expression and mobilization of a *bla*<sub>CTX-M</sub>  $\beta$ -lactamase gene. *Antimicrob Agents Chemother* 2003; 47:2938–2945. <https://doi.org/10.1128/AAC.47.9.2938-2945.2003> PMID: 12936998
49. Kleine CE, Schlabe S, Hischebeth GTR, Molitor E, Pfeifer Y, Wasmuth JC, et al. Successful therapy of a multidrug-resistant extended-spectrum  $\beta$ -lactamase-producing and fluoroquinolone-resistant *Salmonella enterica* Subspecies enterica serovar Typhi infection using combination therapy of meropenem and fosfomycin. *Clin Infect Dis* 2017; 65:1754–6. <https://doi.org/10.1093/cid/cix652> PMID: 29020162
50. Godbole GS, Day MR, Murthy S, Chattaway MA, Nair S. First report of BLACTX-M-15 *Salmonella Typhi* from England. *Clin Infect Dis* 2018; 66(12):1976–1977. <https://doi.org/10.1093/cid/ciy032> PMID: 29471386
51. Ellington MJ, Ekelund O, Aarestrup FM, Canton R, Doumith M, Giske C, et al. The role of whole genome sequencing in antimicrobial susceptibility testing of bacteria: report from the EUCAST Subcommittee. *Clin Microbiol Infect* 2017; 23(1):2–22. <https://doi.org/10.1016/j.cmi.2016.11.012> Epub 2016 Nov 23. PMID: 27890457