



# THE UNIVERSITY *of* EDINBURGH

## Edinburgh Research Explorer

### Coronary Atherosclerosis Imaging by CT to Improve Clinical Outcomes

**Citation for published version:**

Williams, M, Newby, D & Nicol, E 2019, 'Coronary Atherosclerosis Imaging by CT to Improve Clinical Outcomes', *Journal of Cardiovascular Computed Tomography*. <https://doi.org/10.1016/j.jcct.2019.03.007>

**Digital Object Identifier (DOI):**

[10.1016/j.jcct.2019.03.007](https://doi.org/10.1016/j.jcct.2019.03.007)

**Link:**

[Link to publication record in Edinburgh Research Explorer](#)

**Document Version:**

Version created as part of publication process; publisher's layout; not normally made publicly available

**Published In:**

Journal of Cardiovascular Computed Tomography

**General rights**

Copyright for the publications made accessible via the Edinburgh Research Explorer is retained by the author(s) and / or other copyright owners and it is a condition of accessing these publications that users recognise and abide by the legal requirements associated with these rights.

**Take down policy**

The University of Edinburgh has made every reasonable effort to ensure that Edinburgh Research Explorer content complies with UK legislation. If you believe that the public display of this file breaches copyright please contact [openaccess@ed.ac.uk](mailto:openaccess@ed.ac.uk) providing details, and we will remove access to the work immediately and investigate your claim.





Contents lists available at ScienceDirect

## Journal of Cardiovascular Computed Tomography

journal homepage: [www.elsevier.com/locate/jcct](http://www.elsevier.com/locate/jcct)

## Coronary atherosclerosis imaging by CT to improve clinical outcomes

Michelle C. Williams<sup>a,b,\*</sup>, David E. Newby<sup>a,b</sup>, Edward D. Nicol<sup>c,d</sup><sup>a</sup> University of Edinburgh/British Heart Foundation Centre for Cardiovascular Science, Edinburgh, UK<sup>b</sup> Edinburgh Imaging Facility QMRI, University of Edinburgh, Edinburgh, UK<sup>c</sup> Royal Brompton and Harefield NHS Foundation Trust Departments of Cardiology and Radiology, London, UK<sup>d</sup> National Heart and Lung Institute, Faculty of Medicine, Imperial College, London, UK

## A B S T R A C T

Coronary artery disease remains an important cause of morbidity and mortality world-wide. Coronary Computed Tomography Angiography (CCTA) has excellent diagnostic accuracy and the identification and stratification of coronary artery disease is associated with improved prognosis in multiple studies. Recent randomized controlled trials have shown that in patients with stable coronary artery disease, CCTA is associated with improved diagnosis, changes in investigations, changes in medical treatment and appropriate selection for revascularization. Importantly this diagnostic approach reduces the long-term risk of fatal and non-fatal myocardial infarction. The identification of adverse plaques on CCTA is known to be associated with an increased risk of acute coronary syndrome, but does not appear to be predictive of long-term outcomes independent of coronary artery calcium burden. Future research will involve the assessment of outcomes after CCTA in patients with acute chest pain and asymptomatic patients. In addition, more advanced quantification of plaque subtypes, vascular inflammation and coronary flow dynamics may identify further patients at increased risk.

## 1. Introduction

Cardiovascular disease remains an important cause of morbidity and mortality world-wide, responsible for 17.9 million deaths per year.<sup>1</sup> Both the presence and extent of coronary artery disease identified on coronary computed tomography angiography (CCTA) is associated with an adverse prognosis in multiple single center studies and several large multicenter registries. Recent research has shown that management guided by CCTA is associated with improved outcomes for patients with suspected coronary artery disease. The potential mechanisms for the improvement in outcomes in patients undergoing CCTA include more accurate diagnosis, appropriate use of medical therapy and appropriate selection for revascularization. In addition to the identification of coronary artery stenoses, CCTA can also identify the overall burden of atherosclerotic plaque and plaque characteristics, which may be associated with increased risk.

## 2. Detection and prognosis

CCTA has an excellent diagnostic accuracy, both in terms of the ability to identify the presence of coronary artery plaque and the ability to identify obstructive coronary artery stenoses.<sup>2</sup> The high negative predictive value means that CCTA can exclude the presence of coronary artery disease and help avoid any further unnecessary investigations or

treatments. Conversely, CCTA can also risk stratify patients with coronary artery disease, including the appropriate selection of those who may benefit from revascularization (see Figs. 1 and 2).<sup>3</sup>

On the background of excellent diagnostic accuracy, several single and multicenter registry studies have demonstrated that a normal CCTA is associated with an excellent prognosis.<sup>4–6</sup> In contrast, the presence and magnitude of both non-obstructive and obstructive coronary artery disease is associated with subsequent prognosis.<sup>5–9</sup> This is true for both symptomatic and asymptomatic patients with a wide range of cardiovascular risk factors. The identification and quantification of coronary artery calcification (CAC), a surrogate marker of atherosclerosis, is also associated with a poor prognosis in a wide range of patient populations. Unlike CAC scoring, CCTA can identify plaque subtypes including both calcified and non-calcified plaque, and can identify the presence and severity of coronary artery stenoses. Several studies have shown that CCTA is additive to CAC in the assessment of prognosis.<sup>10</sup>

CCTA has excellent diagnostic accuracy for the detection of coronary artery disease and its ability to predict subsequent events was an important first stage in the adoption of this technology. However, over the past 5 years, several randomized controlled trials have addressed the important question of whether management based on CCTA can improve outcomes. These randomized controlled trials have set a benchmark for further research into diagnostic strategies for patients with suspected coronary artery disease.

\* Corresponding author. University of Edinburgh/BHF Centre for Cardiovascular Science, Chancellor's Building, SU305, 49 Little France Crescent, Edinburgh, EH16SUF, UK.

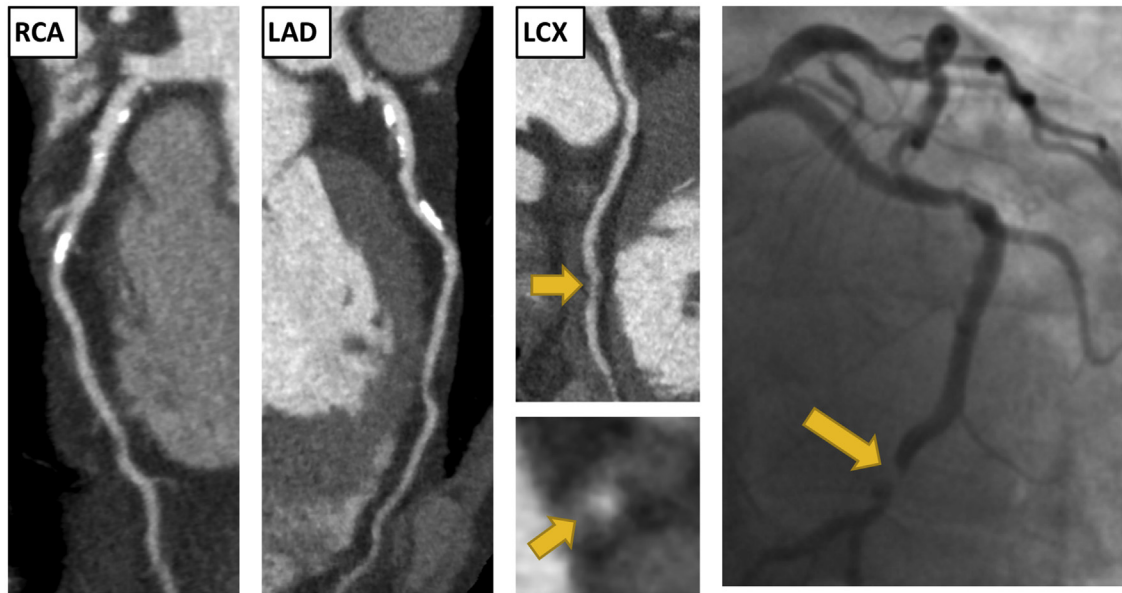
E-mail address: [michelle.williams@ed.ac.uk](mailto:michelle.williams@ed.ac.uk) (M.C. Williams).

[@imagingmedsci](https://twitter.com/imagingmedsci) (M.C. Williams)

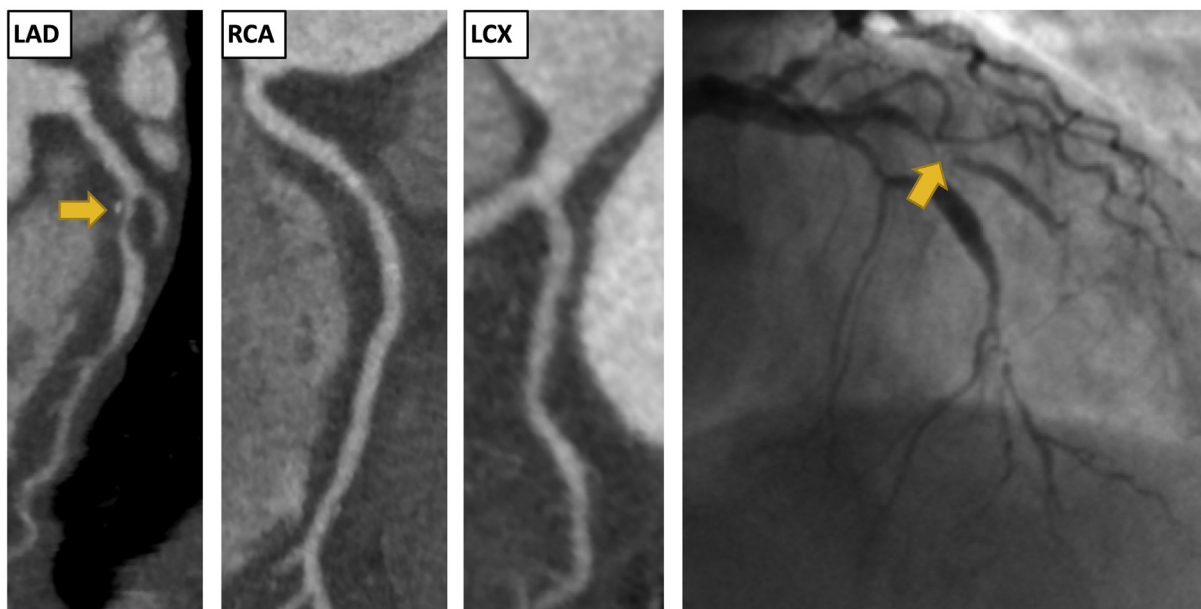
<https://doi.org/10.1016/j.jcct.2019.03.007>

Received 15 January 2019; Received in revised form 13 February 2019; Accepted 25 March 2019

1934-5925/© 2019 The Author. Published by Elsevier Inc. on behalf of Society of Cardiovascular Computed Tomography This is an open access article under the CC BY license (<http://creativecommons.org/licenses/by/4.0/>).



**Fig. 1.** Clinical Vignette 1. A 65-year-old male presented to the rapid access chest pain clinic with symptoms of typical angina. He was a current smoker with a past medical history of gout. An exercise tolerance test was stopped early due to knee pain, but demonstrated no other abnormalities. His coronary artery calcium score was 283 Agatston units. He underwent a CCTA which showed moderate non-obstructive disease (CAD-RADS 3) He had mild calcified plaque in the left anterior descending (LAD) and right coronary artery (RCA), < 50% stenosis. He had moderate non-calcified plaque with positive remodelling in the proximal and distal left circumflex artery (LCX), 50–70% stenosis. He presented 1 years later with an episode of acute chest pain on the background of 2 weeks of worsening chest pain. Electrocardiogram (ECG) on admission showed ST depression in the inferior leads. High sensitivity troponin I was elevated at 2060 ng/L. He was diagnosed with a non ST elevation myocardial infarction (NSTEMI). Invasive coronary angiography showed an occluded mid LCX (yellow arrows). There was also mild disease in the LAD and moderate disease in the small RCA. A bare metal stent was inserted into the LCX and he was asymptomatic on subsequent follow-up. . (For interpretation of the references to colour in this figure legend, the reader is referred to the Web version of this article.)



**Fig. 2.** Clinical Vignette 2. A 67-year-old female presented to the rapid access chest pain clinic with atypical chest pain. She had hypertension but no other cardiovascular risk factors. Her estimated 10-year risk of cardiovascular disease was 14% (ASSIGN score). An exercise tolerance test was normal. Her coronary artery calcium score was 62 Agatston units. CCTA identified single vessel obstructive coronary artery disease (CAD-RADS 4A). There was severe mixed plaque in the proximal and mid LAD, > 70% stenosis. The plaque in the proximal LAD demonstrated positive remodelling and spotty calcification. There was also mild disease in the mid RCA and proximal LCX, < 50% stenosis. 4 years later she presented to the emergency department with acute chest pain. ECG showed ST depression in the inferior leads. High sensitivity troponin I was elevated at 387 ng/L. Invasive coronary angiogram showed an occluded LAD (yellow arrows) and mild disease in the LCX and RCA. The LAD was treated with a drug eluting stent. She had no further hospital admissions in the subsequent 3 years. . (For interpretation of the references to colour in this figure legend, the reader is referred to the Web version of this article.)

**Table 1**  
Randomized controlled trials of CCTA in patients with stable chest pain.<sup>13–19</sup>

	PROMISE	SCOT-HEART	CAPP	Min et al.
Number of patients	10,003	4146	448	180
CCTA vs	Functional testing	Standard care	Stress ECG	MPI
Age (years)	61	57	59	56, 59
Female (%)	53	44	45	44
Pre-test probability (%)	53	47	45, 48	
Symptoms				
Typical angina	12	35	34	32
Atypical angina	78	24	8	23
Non-anginal chest pain	11	41	67	27
Follow-up (months)	25	21, 58	12	2

PROMISE, Prospective Multicenter Imaging Study for Evaluation of Chest Pain; SCOT-HEART, Scottish Computed Tomography of the HEART; CAPP, Cardiac CT for the Assessment of Pain and Plaque; ECG, electrocardiogram; MPI, myocardial perfusion imaging; CCTA, computed tomography coronary angiography.

### 3. Improved outcomes in patients with stable chest pain

Chest pain represents an important, and frequent, reason for consultation in both primary and secondary care.<sup>11,12</sup> The many potential causes of chest pain mean that accurate diagnosis is an essential aspect of clinical care. Anginal chest pain due to coronary artery disease is an important diagnosis of both inclusion and exclusion for subsequent patient management. Recently two large multi-center randomized controlled trials and two smaller randomized trials, have addressed the question of prognostic outcomes after CCTA (Table 1). These include the Scottish Computed Tomography of the HEART trial (SCOT-HEART)<sup>13–15</sup> and the Prospective Multicenter Imaging Study for Evaluation of Chest Pain (PROMISE) trial.<sup>16,17</sup>

#### 3.1. Study design of the multi-center randomized controlled trials

SCOT-HEART is a large multi-center trial based in the UK which assessed the use of CCTA in stable patients attending cardiology outpatient clinics.<sup>13</sup> It recruited 4146 patients between 18 and 75 years, without excluding patients based on the presence of atrial fibrillation, body mass index or coronary artery calcium score. Patients were randomized to standard care or standard care plus computed tomography (CT). The primary outcome was the diagnosis of angina due to coronary artery disease at 6 weeks.<sup>14</sup> Patients were followed-up for the primary clinical outcome of coronary heart disease death or non-fatal myocardial infarction at 5 years.<sup>15</sup>

PROMISE is a large multi-center trial based in the US which conducted a head-to-head comparison of CCTA with functional stress testing in just over 10,000 patients with suspected coronary artery disease.<sup>16</sup> The functional testing arm included exercise electrocardiography (10%), exercise or pharmacologic nuclear stress testing (70%), and stress echocardiography (20%). The primary outcome was a composite of death, non-fatal myocardial infarction, hospitalization for unstable angina, or major procedural complication (including renal failure and anaphylaxis), and patients were follow-up for 2 years.<sup>17</sup>

#### 3.2. Outcomes in the randomized controlled trials

The SCOT-HEART trial showed an improvement in outcomes in the CCTA group with a reduction in death from coronary heart disease or non-fatal myocardial infarction at both 2 (hazard ratio (HR) 0.62, 95% CI 0.38 to 1.01,  $p = 0.0527$ ) and 5 years (HR 0.59, 95% confidence interval (CI), 0.41 to 0.84,  $p = 0.004$ ).<sup>12,13</sup> This was largely driven by reduction in the risk of non-fatal myocardial infarction. Thus, the SCOT-HEART study demonstrated for the first time that management based on the results of a non-invasive diagnostic test can improve coronary artery disease outcomes in a randomized controlled trial.

The PROMISE trial showed no differences in the primary composite endpoint of death, non-fatal myocardial infarction, hospitalization for unstable angina and major procedural complication between the CCTA

and functional care groups (HR 1.04, 95% CI 0.83 to 1.29,  $p = 0.75$ ) at 2 years.<sup>17</sup> A statistical nuance is that these results failed to meet both superiority and non-inferiority criteria, leaving the impact of this study debated. However, consistent with the SCOT-HEART trial, there was a lower rate of death or non-fatal myocardial infarction in the CCTA group (HR 0.66, 95% CI 0.44 to 1.00,  $p = 0.049$ ) at 12 months where they had 93% complete follow-up data.<sup>17</sup> PROMISE suggests that management based on both strategies is safe and suitable for the assessment of patients with suspected coronary artery disease.

Two smaller randomized controlled trials have assessed outcomes in patients with stable chest pain. The CAPP (Cardiac CT for the Assessment of Pain and Plaque) trial was a single center randomized controlled trial comparing CCTA and exercise ECG which recruited 448 patients.<sup>18</sup> It found no difference in major adverse cardiac events between groups, but this trial was underpowered for this outcome. A study by Min et al. randomized patients to CCTA or myocardial perfusion single-photon emission computed tomography and recruited 180 patients.<sup>19</sup> At 55 days, no patient had a myocardial infarction or died, although this study was again underpowered. A meta-analysis has assessed the combined outcomes of these studies, including the 2 but not 5-year SCOT-HEART results.<sup>20</sup> It found that patients undergoing CCTA had a significant reduction in the annual rate of myocardial infarction (rate ratio 0.69, 95% CI 0.49 to 0.98,  $p = 0.038$ ) but no difference in all-cause mortality (rate ratio 0.96, 95% CI 0.72 to 1.28,  $p = 0.78$ ).<sup>20</sup>

### 4. Mechanisms for improved outcomes in patients undergoing CCTA

There are a variety of mechanisms by which patients undergoing CCTA may benefit from subsequent improved outcomes. This includes more accurate diagnosis, optimization of medical therapy, appropriate use of subsequent investigations including invasive coronary angiography and appropriate selection for revascularization.

#### 4.1. CCTA improving diagnosis

For over 20 years, risk stratification models have been central to the diagnosis of patients with chest pain.<sup>21</sup> However these models have several limitations. First, the data used to create them was obtained prior to the development of modern management strategies. Second, they include patients with a limited range of age, sex and ethnicity. Third, they led to a limited stratification of patients, with many in the pre-test probability range of 10–90%.<sup>22</sup> Thus the diagnostic ability of risk prediction models is limited.

CCTA provides an accurate answer to the question of whether or not the patient has coronary artery disease and can also provide information as to the likelihood of whether the patient's symptoms are likely to be secondary to coronary artery disease. In the SCOT-HEART trial, CCTA led to a change in diagnosis in 23% of patients, compared to 1%



in the standard care arm ( $p < 0.001$ ).<sup>14</sup> Improvements in the accuracy of the diagnosis are important in providing the optimal clinical care. In addition to diagnostic accuracy, CCTA can also improve the certainty of a diagnosis. In SCOT-HEART, CCTA improved the certainty of the diagnosis of coronary artery disease (relative risk (RR) 2.56, 95% CI 2.33 to 02.79,  $p < 0.0001$ ) and angina due to coronary artery disease (RR 1.79, 95% CI 1.62 to 1.96,  $p < 0.001$ ). The certainty of a diagnosis has important implications for the subsequent actions of both physicians and patients.<sup>23</sup> It should be noted that exclusion of CAD, whether in its entirety, or as a likely cause of symptoms, is as important as the confirmation of significant disease. This also informs the most appropriate management strategy, which may not include pharmacological or physical intervention.

#### 4.2. CCTA and optimization of medical management

The use of CCTA can lead to changes in the medical management of patients. This includes the starting of new medications in patients who have coronary artery disease, or the stopping of unnecessary medications in patients who have been shown to have normal coronary arteries.

In the SCOT-HEART study, there was a change in medical treatments in 27% of patients in the CCTA group and 5% in the standard care group.<sup>14</sup> This included changes in recommendations for both preventative (18% vs 4%,  $p < 0.001$ ) and anti-anginal treatments (9% vs 1%,  $p < 0.001$ ).<sup>14</sup> A subsequent Danish registry study of 86,705 patients who underwent functional testing or CCTA also showed that the use of CCTA was associated with changes in medical management.<sup>24</sup> They found that there was increased use of preventative medications after CCTA compared to functional testing, including statins (26% vs 9%,  $p < 0.001$ ) and aspirin (13% vs 9%,  $p < 0.001$ ).<sup>24</sup> Several other smaller studies have shown that CCTA leads to the intensification of preventative medical therapies<sup>19,25,26</sup> and subsequent improvements in cholesterol measurements.<sup>27</sup>

Another important factor that CCTA can influence is the continuation of long-term preventative medications. A variety of patient and clinician factors can impact compliance with medication recommendations, including demographic, clinical, socio-economic, and belief-related factors.<sup>28,29</sup> The identification of CAC is associated with increased adherence to statin therapy, and patients with higher CAC score are more likely to adhere to statin therapy.<sup>30-32</sup> In the SCOT-HEART trial, there was increased use of preventative therapy in patients in the CCTA group throughout follow-up, particularly in those with coronary artery disease.

Therefore, it can be surmised that changes in medical management after CCTA are likely to be important factors in the improvement of outcomes after CCTA through both the individualization of medical treatment recommendations and improvement in subsequent adherence.

#### 4.3. CCTA and appropriate use of downstream investigations

Initial criticism of CCTA was that it would merely increase the number of subsequent diagnostic tests that are performed. However, this has not been confirmed in long-term follow-up studies. The identification of coronary artery disease *per se* does not necessitate invasive imaging. Indeed, the majority of patients who undergo CCTA do not require any further imaging investigations. Invasive coronary angiography should be reserved for patients who are likely to require revascularization. In this respect, CCTA can be used as a “gate-keeper” for subsequent invasive investigation.

CCTA led to changes in investigations in 15% of patients, compared to 1% in the standard care group ( $p < 0.0001$ ).<sup>14</sup> This included the cancellation of investigations, particularly additional functional imaging, and the organisation of new investigations, primarily invasive coronary angiography. Although there was an early increase in the use

of invasive coronary angiography in both the PROMISE and SCOT-HEART trials, the overall rates of invasive coronary angiography were similar in the CCTA group and the standard care group by 5 years of follow-up (HR 1.00, 95% CI 0.88, 1.13).<sup>15</sup> This suggests the more appropriate targeted use of invasive coronary angiography after CCTA that reduced the need for subsequent downstream invasive angiography. The study by Min et al. also identified similar rates of invasive coronary angiography after CCTA and functional testing.<sup>19</sup> A meta-analysis of CCTA studies showed that there was a trend towards more invasive coronary angiography after CCTA (OR 1.33, 95% CI 0.95 to 1.84,  $p = 0.09$ ),<sup>20</sup> but this did not include studies with long-term follow-up.

The rates of normal coronary arteries identified on diagnostic invasive coronary angiography varies depending on the center, indication or population, but has been quoted as being over 50%.<sup>33</sup> Due to the potential for rare but serious complications, its invasive nature, and the cost, it is important to ensure the appropriate use of invasive coronary angiography. Indeed, in the era of non-invasive imaging, finding normal coronary arteries on invasive coronary angiography should be an uncommon event. The PROMISE trial showed that there were fewer invasive coronary angiograms showing normal coronary arteries in the CCTA group compared to the functional testing group (3.4% vs 4.3%,  $p = 0.02$ ).<sup>17</sup> Similarly in the SCOT-HEART trial, CCTA was associated with a decreased rate of normal coronary arteries (HR 0.39, 95% CI 0.23 to 0.68,  $p < 0.001$ ).<sup>34</sup> Other studies have also shown a reduction in the frequency of normal coronary arteries at invasive coronary angiography after CCTA, confirming that CCTA can be used as a gate-keeper for the use of invasive coronary angiography.<sup>3</sup>

#### 4.4. CCTA and appropriate use of revascularization

CCTA can assist the appropriate selection of patients who may benefit from revascularization. In the PROMISE trial, CCTA was associated with an increase in the number of patients undergoing revascularization (6.2% vs 3.2%,  $p < 0.001$ ).<sup>17</sup> A meta-analysis of randomized controlled trials, which included the 2 but not 5-year follow-up of the SCOT-HEART trial, found that there was a small increase in revascularization after CCTA compared to usual care (7.9% vs 5.1%,  $p < 0.001$ ). The Danish registry study also showed an increase in invasive coronary angiography and revascularization in the CCTA group after 120 days of follow-up.<sup>24</sup> In the first year of follow-up in the SCOT-HEART trial, there was an increase in the use of revascularization in the CCTA group (HR 1.21, 95% CI 1.01 to 1.46,  $p = 0.042$ ). However, at 5 years, there was no difference in the rate of revascularization in the CCTA or standard care groups (HR 1.07, 95% CI 0.91 to 1.27), because beyond one year, there were higher rates of coronary revascularization in the standard care group (HR 0.59, 95% CI 0.38 to 0.90,  $p = 0.015$ ). This suggests that the CCTA can guide the early selection of appropriate patients for both invasive coronary angiography and revascularization. It also suggests that early and more targeted treatment in the CTCA group prevented downstream longer-term disease progression, whereas there was declaration of unrecognized disease in the standard care group requiring further investigation and intervention.

### 5. CCTA and outcomes in patients with acute chest pain

Previous research into the use of CCTA in the Emergency Department has primarily focused on improving the time-to-diagnosis. Several randomized controlled trials have been performed in patients with a low to intermediate pre-test probability (Table 2). These have established that the presence of normal coronary arteries in patients presenting with acute chest pain is associated with a good prognosis and low risk of subsequent cardiac events. They have also shown that CCTA is associated with reduced time to-diagnosis, reduced length of hospital stay and reduced cost.<sup>35,36</sup> However, a meta-analysis of the randomized controlled trials in patients with acute chest pain found

**Table 2**  
Randomized controlled trials of CCTA improving outcomes in acute chest pain<sup>35,36,66,67</sup>.

	ACRIN-PA	BEACON	CATCH	CT-COMPARE	CT-STAT	Nabi et al.	PERFECT	PROSPECT	ROMICAT-II
Number of patients	1368	490	576	562	699	598	395	400	1000
CCTA vs	Stress ECG, stress imaging	Stress ECG, MPI	Stress ECG, MPI	Stress ECG	MPI	MPI	Stress echo., MPI	MPI	Stress ECG, Stress echo., MPI
Age (mean years)	50	54	56	52	50	53	60	57	54
Female (%)	54	47	45	42	54	56	54	63	47
Follow-up (months)	12	1	19	12	6	7	12	12	1

ACRIN-PA, CT Angiography for Safe Discharge of Patients with Possible Acute Coronary Syndromes; BEACON, Better Evaluation of Acute Chest Pain with Coronary Computed Tomography Angiography; CATCH, CArdiac cT in the treatment of acute CHest pain; CT-COMPARE, CT Coronary Angiography Compared to Exercise ECG; CT-STAT, Coronary Computed Tomographic Angiography for Systematic Triage of Acute Chest Pain Patients to Treatment; PERFECT, Prospective First Evaluation in Chest Pain; PROSPECT, Prospective Randomized Outcome trial comparing radionuclide Stress myocardial Perfusion imaging and ECG-gated coronary CT angiography; ROMICAT-II, Rule Out MI/ischaemia Using Computer Assisted Tomography; ECG, electrocardiogram; MPI, myocardial perfusion imaging; echo., echocardiography.

that there was no difference in the outcomes of all-cause mortality, myocardial infarction or major adverse cardiac events between the CCTA and standard care groups.<sup>37</sup>

Most of the previous studies of CCTA in the emergency department occurred prior to the adoption of high sensitivity troponin. One small trial, BEACON (Better Evaluation of Acute Chest Pain with Coronary Computed Tomography Angiography), employed measurement of high sensitivity troponin in all patients. This small study did not show any difference in outcomes between the groups. Post-hoc analysis of high sensitivity troponin in the ROMICAT II study identified a group of patients who could be discharged with good outcomes based on high sensitivity troponin and risk factors alone.<sup>38</sup> Further randomized controlled trials are underway to assess the outcomes of patients undergoing CCTA in the Emergency Department including the RAPID-CTCA (Rapid Assessment of Potential Ischaemic Heart Disease with CTCA; NCT02284191) and TARGET-CTCA (Troponin in Acute chest pain to Risk stratify and Guide Effective use of Computed Tomography Coronary Angiography) trials.

## 6. CCTA and asymptomatic patients

In asymptomatic patients, the identification of CAC is associated with clinical outcomes and a zero CAC score associated with an excellent prognosis.<sup>39,40</sup> In addition, the identification and stratification of coronary artery disease on CCTA predicts prognosis in registry studies of asymptomatic patients.<sup>41</sup> The identification of coronary artery disease in asymptomatic patients therefore moves us away from primary prevention, and towards a new form of secondary prevention of coronary artery disease.

To date only one randomized controlled trial has assessed the use of CCTA in asymptomatic patients. The FACTOR-64 trial (Screening For Asymptomatic Obstructive Coronary Artery Disease Among High-Risk Diabetic Patients Using CT Angiography, Following Core 64) recruited 900 patients with type 1 or 2 diabetes without a previous history or symptoms of coronary artery disease.<sup>42</sup> Patients were randomized to either undergo CCTA or standard care. After 4 years, there was no difference in the primary end point of all-cause mortality, non-fatal myocardial infarction or unstable angina requiring hospitalization (HR 0.80, 95% CI 0.49 to 1.32,  $p = 0.38$ ).<sup>42</sup> However, this was a small trial, and a large proportion of patients were already taking preventative medication prior to CCTA. Therefore, the role of CCTA in the assessment of asymptomatic patients remains uncertain. Other non-randomized prospective studies support the utility of CCTA to identify coronary artery disease in asymptomatic patients.<sup>43</sup> Future research will assess the role of CCTA in the broad population of patients with suspected coronary artery disease, including the SCOT-HEART 2 trial.

## 7. Impact of adverse plaque characteristics on outcomes

Although the presence of coronary artery stenosis is associated with subsequent events, most myocardial infarctions occur in segments with non-obstructive rather than obstructive disease.<sup>44,45</sup> Thus, the identification other plaque characteristics which are associated with prognosis is important. An important advantage of CCTA is that in addition to the identification of coronary artery stenosis, it can also assess plaque characteristics. This can be in the form of visual assessment, or more recently using software capable of semi-automated quantitative assessment.

Simple assessment of plaque involves the identification of calcified, non-calcified and mixed subtypes. The stratification of plaques with this method has shown that non-calcified plaques in particular are associated with acute coronary events.<sup>46</sup> More detailed visual assessment includes the identification of “adverse plaque features” including positive remodelling, low attenuation plaque, spotty calcification and the “napkin-ring” sign. These features are associated with markers of histological vulnerability<sup>47</sup> and with prognosis in several studies.<sup>48–53</sup> A meta-analysis found that the risk of future ACS was increased in patients with high-risk plaque (OR 12.1, 95% CI 5.24 to 28.1,  $p = 0.0001$ ).<sup>54</sup>

In a study of 3158 patients followed up for 4 years, Motoyama et al. found that the presence of positive remodelling or low attenuation plaque was associated an increased likelihood ACS.<sup>50</sup> Adverse plaques are frequent on CCTA performed for both stable and acute chest pain occurring in 15% of patients in the PROMISE trial, 35% in ROMICAT II and 34% in SCOTHEART.<sup>54–56</sup> In ROMICAT II, adverse plaque (positive remodelling, low attenuation plaque, spotty calcification or “napkin-ring”) were more frequent in patients with ACS (odds ratio 8.9, 95% CI 1.8 to 43.3,  $p = 0.006$ ).<sup>55</sup> In the PROMISE trial, adverse plaques (positive remodelling, low attenuation plaque, or “napkin-ring”) were associated with increased risk of death, myocardial infarction or hospitalization for unstable angina at 2 years (HR 2.73, 95% CI 1.89, 3.93).<sup>56</sup> In the SCOT-HEART trial, adverse plaques (positive remodelling and/or low attenuation plaque) were associated with an increased risk of coronary heart disease death or myocardial infarction (HR 3.01, 95% CI 1.61 to 5.63,  $p = 0.001$ ), but this was not independent of CAC.<sup>57</sup> This suggest that the primary factor for long term prognosis is the overall plaque burden rather than the presence of an adverse plaque on non-invasive imaging. This is not surprising as the burden of coronary artery disease measured as coronary artery calcium score, number of vessels involved, or more complex scores are all predictive of outcomes. In addition, the development of atherosclerotic plaque is a continuous dynamic process. The fact that adverse plaques appear to be predictive of ACS and early outcomes, but not of late outcomes, is consistent with the theory of continuous plaque remodelling. An individual HRP may undergo subsequent stabilisation or subclinical rupture, rather than

present with ACS. Therefore, to predict long term events, the presence of any plaque is more important than the type of plaque.

The retrospective nature of some studies to date, the high frequency of adverse plaque, and the low frequency of clinical outcomes, means that the relevance of the assessment of adverse plaque in clinical practice is uncertain. In addition, the visual assessment of atherosclerotic plaque is time consuming and associated with observer variability.<sup>58</sup> Current research into the quantitative assessment of atherosclerotic plaque aims to address these issues. Quantitative plaque analysis has been used to assess plaque features associated with severe stenoses,<sup>59</sup> myocardial perfusion defects<sup>60</sup> and abnormal computed tomography fractional flow reserve (CT FFR).<sup>61</sup> It has also been used to assess differences in plaque types between diabetic and non-diabetic patients,<sup>62</sup> and assess plaque progression.<sup>62</sup> The prognostic implication of quantitative plaque assessment has been assessed in registry and case control studies.<sup>63,64</sup> In a study of 2748 patients, the quantification of total, non-calcified and low-density plaque volumes and contrast density drop were predictive of cardiac death at 5 years of follow-up.<sup>64</sup> Future research will improve the automation of these techniques but there is a need to assess their impact in randomized studies of outcomes. In addition, advanced computational techniques seek to identify additional features of adverse plaques which are visible to the computer rather than the human eye.<sup>65</sup> This may be complementary to other techniques which are under investigation such as CT assessment of vascular inflammation or vascular flow dynamics.

## 8. Conclusion

CCTA can improve outcomes by identifying patients who may benefit from medical therapy or revascularization. It can also identify patients who do not have coronary artery disease and avoid unnecessary investigation or life-long medication in these patients. Thus, by improving the accuracy of diagnosis and facilitating appropriate management, a diagnostic strategy including CCTA can improve outcomes for patients with suspected coronary artery disease. There is robust evidence for this in patients with stable chest pain and further research is underway in patients with acute chest pain and asymptomatic patients. The visual or quantitative assessment of plaque may further improve outcomes for patients with coronary artery disease in the future.

## Conflicts of interest

MCW has performed consultancy for GE Healthcare.

## Acknowledgements

DN (CH/09/002) and MCW (FS/11/014) are supported by the British Heart Foundation. MCW is supported by The Chief Scientist Office of the Scottish Government Health and Social Care Directorates (PCL/17/04). DEN is the recipient of a Wellcome Trust Senior Investigator Award (WT103782AIA).

## References

1. WHO. *World Health Statistics. Monitoring Health for the SDGs. Sustainable Development Goals*; 2018:1–9 2018.
2. Miller JM, Rochitte CE, Dewey M, et al. Diagnostic performance of coronary angiography by 64-row CT. *N Engl J Med*. 2008;359(22):2324–2336. <https://doi.org/10.1056/NEJMoa0806576>.
3. Dewey M, Rief M, Martus P, et al. Evaluation of computed tomography in patients with atypical angina or chest pain clinically referred for invasive coronary angiography: randomised controlled trial. *BMJ*. 2016;355:i5441. <https://doi.org/10.1136/bmj.i5441>.
4. Andreini D, Pontone G, Mushtaq S, et al. A long-term prognostic value of coronary CT angiography in suspected coronary artery disease. *JACC (J Am Coll Cardiol): Cardiovascular Imaging*. 2012;5(7):690–701. <https://doi.org/10.1016/j.jcmg.2012.03.009>.
5. Min JK, Shaw LJ, Devereux RB, et al. Prognostic value of multidetector coronary

6. computed tomographic angiography for prediction of all-cause mortality. *J Am Coll Cardiol*. 2007;50(12):1161–1170. <https://doi.org/10.1016/j.jacc.2007.03.067>.
7. Hadamitzky M, Taubert S, Deseive S, et al. Prognostic value of coronary computed tomography angiography during 5 years of follow-up in patients with suspected coronary artery disease. *Eur Heart J*. September 2013. <https://doi.org/10.1093/eurheartj/ehs293>.
8. Hadamitzky M, Achenbach S, Al-Mallah M, et al. Optimized prognostic score for coronary computed tomographic angiography: results from the CONFIRM registry (CORonary CT Angiography Evaluation for Clinical Outcomes: an International Multicenter Registry). *J Am Coll Cardiol*. 2013;62(5):468–476. <https://doi.org/10.1016/j.jacc.2013.04.064>.
9. Chow BJW, Small G, Yam Y, et al. Prognostic and therapeutic implications of statin and aspirin therapy in individuals with nonobstructive coronary artery disease: results from the CONFIRM (coronary CT angiography evaluation for clinical outcomes: an international multicenter registry) registry. *Arterioscler Thromb Vasc Biol*. 2015;35(4):981–989. <https://doi.org/10.1161/ATVBAHA.114.304351>.
10. Bittencourt MS, Hulten E, Ghoshhajra B, et al. Prognostic value of nonobstructive and obstructive coronary artery disease detected by coronary computed tomography angiography to identify cardiovascular events. *Circulation: Cardiovascular Imaging*. 2014;7(2):282–291. <https://doi.org/10.1161/CIRCIMAGING.113.001047>.
11. Min JK, Labounty TM, Gomez MJ, et al. Incremental prognostic value of coronary computed tomographic angiography over coronary artery calcium score for risk prediction of major adverse cardiac events in asymptomatic diabetic individuals. *Atherosclerosis*. 2014;232(2):298–304. <https://doi.org/10.1016/j.atherosclerosis.2013.09.025>.
12. Nilsson S, Scheike M, Engblom D, et al. Chest pain and ischaemic heart disease in primary care. *Br J Gen Pract*. 2003;53(490):378–382.
13. Goodacre S, Cross E, Arnold J, Angelini K, Capewell S, Nicholl J. The health care burden of acute chest pain. *Heart*. 2005;91(2):229–230. <https://doi.org/10.1136/hrt.2003.027599>.
14. Newby DE, Williams MC, Flapan AD, et al. Role of multidetector computed tomography in the diagnosis and management of patients attending the rapid access chest pain clinic, the Scottish computed tomography of the heart (SCOT-HEART) trial: study protocol for randomized controlled trial. *Trials*. 2012;13(1):184. <https://doi.org/10.1186/1745-6215-13-184>.
15. SCOT-HEART investigators. CT coronary angiography in patients with suspected angina due to coronary heart disease (SCOT-HEART): an open-label, parallel-group, multicentre trial. *Lancet*. 2015;385(9985):2383–2391. [https://doi.org/10.1016/S0140-6736\(15\)60291-4](https://doi.org/10.1016/S0140-6736(15)60291-4).
16. SCOT-HEART investigators. Newby DE, Adamson PD, et al. Coronary CT angiography and 5-year risk of myocardial infarction. *N Engl J Med*. 2018;379(10):924–933. <https://doi.org/10.1056/NEJMoa1805971>.
17. Douglas PS, Hoffmann U, Lee KL, et al. PROspective Multicenter Imaging Study for Evaluation of chest pain: rationale and design of the PROMISE trial. *Am Heart J*. 2014;167(6):796–803. <https://doi.org/10.1016/j.ahj.2014.03.003> e1.
18. Douglas PS, Hoffmann U, Patel MR, et al. Outcomes of anatomical versus functional testing for coronary artery disease. *N Engl J Med*. 2015;372(14):1291–1300. <https://doi.org/10.1056/NEJMoa1415516>.
19. McKavanagh P, Lusk L, Ball PA, et al. A comparison of cardiac computerized tomography and exercise stress electrocardiogram test for the investigation of stable chest pain: the clinical results of the CAPP randomized prospective trial. *European Heart Journal - Cardiovascular Imaging*. 2015;16(4):441–448. <https://doi.org/10.1093/ehjci/jeu284>.
20. Min JK, Koduru S, Dunning AM, et al. Coronary CT angiography versus myocardial perfusion imaging for near-term quality of life, cost and radiation exposure: a prospective multicenter randomized pilot trial. *J Cardiovasc Comput Tomogr*. 2012;6(4):274–283. <https://doi.org/10.1016/j.jcct.2012.06.002>.
21. Bittencourt MS, Hulten EA, Murthy VL, et al. Clinical outcomes after evaluation of stable chest pain by coronary computed tomographic angiography versus usual care: a meta-analysis. *Circulation: Cardiovascular Imaging*. 2016;9(4):e004419 <https://doi.org/10.1161/CIRCIMAGING.115.004419>.
22. Braunwald E, Jones RH, Mark DB, et al. Diagnosing and managing unstable angina. Agency for health care policy and research. *Circulation*. 1994;90(1):613–622.
23. NICE. *Chest Pain of Recent Onset: Assessment and Diagnosis*. November 2016; November 2016.
24. Lutfey KE, Link CL, Marceau LD, et al. Diagnostic certainty as a source of medical practice variation in coronary heart disease: results from a cross-national experiment of clinical decision making. *Bossuyt PMM. Med Decis Making*. 2009;29(5):606–618. <https://doi.org/10.1177/0272989X09331811>.
25. Jørgensen ME, Andersson C, Norgaard BL, et al. Functional testing or coronary computed tomography angiography in patients with stable coronary artery disease. *J Am Coll Cardiol*. 2017;69(14):1761–1770. <https://doi.org/10.1016/j.jacc.2017.01.046>.
26. Hulten E, Bittencourt MS, Singh A, et al. Coronary artery disease detected by coronary computed tomographic angiography is associated with intensification of preventive medical therapy and lower low-density lipoprotein cholesterol. *Circulation: Cardiovascular Imaging*. 2014;7(4):629–638. <https://doi.org/10.1161/CIRCIMAGING.113.001564>.
27. Labounty TM, Devereux RB, Lin FY, Weinsaft JW, Min JK. Impact of coronary computed tomographic angiography findings on the medical treatment and control of coronary artery disease and its risk factors. *Am J Cardiol*. 2009;104(7):873–877. <https://doi.org/10.1016/j.amjcard.2009.05.024>.
28. Cheezum MK, Hulten EA, Smith RM, et al. Changes in preventive medical therapies and CV risk factors after CT angiography. *JCMG*. 2013;6(5):574–581. <https://doi.org/10.1016/j.jcmg.2012.11.016>.
29. Packard KA, Hilleman DE. Adherence to therapies for secondary prevention of



- cardiovascular disease: a focus on aspirin. *Cardiovasc Ther.* 2016;34(6):415–422. <https://doi.org/10.1111/1755-5922.12211>.
29. Nanna MG, Navar AM, Zakrojsky P, et al. Association of patient perceptions of cardiovascular risk and beliefs on statin drugs with racial differences in statin use: insights from the patient and provider assessment of lipid management registry. *JAMA Cardiol.* 2018;3(8):739–748. <https://doi.org/10.1001/jamacardio.2018.1511>.
  30. Kalia NK, Cespedes L, Youssef G, Li D, Budoff MJ. Motivational effects of coronary artery calcium scores on statin adherence and weight loss. *Coron Artery Dis.* 2015;26(3):225–230. <https://doi.org/10.1097/MCA.000000000000207>.
  31. Gupta A, Lau E, Varshney R, et al. The identification of calcified coronary plaque is associated with initiation and continuation of pharmacological and lifestyle preventive therapies: a systematic review and meta-analysis. *JACC (J Am Coll Cardiol): Cardiovascular Imaging.* 2017;10(8):833–842. <https://doi.org/10.1016/j.jcmg.2017.01.030>.
  32. Mamudu HM, Paul TK, Veeranki SP, Budoff M. The effects of coronary artery calcium screening on behavioral modification, risk perception, and medication adherence among asymptomatic adults: a systematic review. *Atherosclerosis.* 2014;236(2):338–350. <https://doi.org/10.1016/j.atherosclerosis.2014.07.022>.
  33. Patel MR, Peterson ED, Dai D, et al. Low diagnostic yield of elective coronary angiography. *N Engl J Med.* 2010;362(10):886–895. <https://doi.org/10.1056/NEJMoa0907272>.
  34. Williams MC, Hunter A, Shah ASV, et al. Use of coronary computed tomographic angiography to guide management of patients with coronary disease. *J Am Coll Cardiol.* 2016;67(15):1759–1768. <https://doi.org/10.1016/j.jacc.2016.02.026>.
  35. Goldstein JA, Chinnaiyan KM, Abidov A, et al. The CT-STAT (coronary computed tomographic angiography for systematic triage of acute chest pain patients to treatment) trial. *JACC (J Am Coll Cardiol).* 2011;58(14):1414–1422. <https://doi.org/10.1016/j.jacc.2011.03.068>.
  36. Litt HI, Gatsonis C, Snyder B, et al. CT angiography for safe discharge of patients with possible acute coronary syndromes. *N Engl J Med.* 2012;366(15):1393–1403. <https://doi.org/10.1056/NEJMoa1201163>.
  37. Gongora CA, Bavishi C, Uretsky S, Argulian E. Acute chest pain evaluation using coronary computed tomography angiography compared with standard of care: a meta-analysis of randomised clinical trials. *Heart.* August 2017. <https://doi.org/10.1136/heartjnl-2017-311647>.
  38. Ferencik M, Mayrhofer T, Lu MT, et al. High-sensitivity cardiac troponin I as a gatekeeper for coronary computed tomography angiography and stress testing in patients with acute chest pain. *Clin Chem.* 2017;63(11):1724–1733. <https://doi.org/10.1373/clinchem.2017.275552>.
  39. Peters SAE, Ruijter den HM, Bots ML, Moons KGM. Improvements in risk stratification for the occurrence of cardiovascular disease by imaging subclinical atherosclerosis: a systematic review. *Heart.* 2012;98(3):177–184. <https://doi.org/10.1136/heartjnl-2011-300747>.
  40. Hecht H, Blaha MJ, Berman DS, et al. Clinical indications for coronary artery calcium scoring in asymptomatic patients: expert consensus statement from the Society of Cardiovascular Computed Tomography. *J Cardiovasc Comput Tomogr.* 2017;11(2):157–168. <https://doi.org/10.1016/j.jcct.2017.02.010>.
  41. Cho I, Al'Aref SJ, Berger A, et al. Prognostic value of coronary computed tomographic angiography findings in asymptomatic individuals: a 6-year follow-up from the prospective multicentre international CONFIRM study. *Eur Heart J.* 2018;358:1336. <https://doi.org/10.1093/eurheartj/ehx774>.
  42. Muhlestein JB, Lappé DL, Lima JAC, et al. Effect of screening for coronary artery disease using CT angiography on mortality and cardiac events in high-risk patients with diabetes: the FACTOR-64 randomized clinical trial. *J Am Med Assoc.* 2014;312(21):2234–2243. <https://doi.org/10.1001/jama.2014.15825>.
  43. Plank F, Friedrich G, Dichtl W, et al. The diagnostic and prognostic value of coronary CT angiography in asymptomatic high-risk patients: a cohort study. *Open Heart.* 2014;1(1):e000096. <https://doi.org/10.1136/openhrt-2014-000096>.
  44. Chang H-J, Lin FY, Lee S-E, et al. Coronary atherosclerotic precursors of acute coronary syndromes. *J Am Coll Cardiol.* 2018;71(22):2511–2522. <https://doi.org/10.1016/j.jacc.2018.02.079>.
  45. Van Lierde J, De Geest H, Verstraete M, Van de Werf F. Angiographic assessment of the infarct-related residual coronary stenosis after spontaneous or therapeutic thrombolysis. *JACC (J Am Coll Cardiol).* 1990;16(7):1545–1549.
  46. Hoffmann U, Moselewski F, Nieman K, et al. Noninvasive assessment of plaque morphology and composition in culprit and stable lesions in acute coronary syndrome and stable lesions in stable angina by multidetector computed tomography. *J Am Coll Cardiol.* 2006;47(8):1655–1662. <https://doi.org/10.1016/j.jacc.2006.01.041>.
  47. Obaid DR, Calvert PA, Brown A, et al. Coronary CT angiography features of ruptured and high-risk atherosclerotic plaques: correlation with intra-vascular ultrasound. *J Cardiovasc Comput Tomogr.* 2017;11(6):455–461. <https://doi.org/10.1016/j.jcct.2017.09.001>.
  48. Motoyama S, Sarai M, Harigaya H, et al. Computed tomographic angiography characteristics of atherosclerotic plaques subsequently resulting in acute coronary syndrome. *J Am Coll Cardiol.* 2009;54(1):49–57. <https://doi.org/10.1016/j.jacc.2009.02.068>.
  49. Motoyama S, Kondo T, Sarai M, et al. Multislice computed tomographic characteristics of coronary lesions in acute coronary syndromes. *J Am Coll Cardiol.* 2007;50(4):319–326. <https://doi.org/10.1016/j.jacc.2007.03.044>.
  50. Motoyama S, Ito H, Sarai M, et al. Plaque characterization by coronary computed tomography angiography and the likelihood of acute coronary events in mid-term follow-up. *J Am Coll Cardiol.* 2015;66(4):337–346. <https://doi.org/10.1016/j.jacc.2015.05.069>.
  51. Schlett CL, Maurovich-Horvat P, Ferencik M, et al. Histogram analysis of lipid-core plaques in coronary computed tomographic angiography: ex vivo validation against histology. *Investig Radiol.* 2013;48(9):646–653. <https://doi.org/10.1097/RLI.0b013e31828fd9f>.
  52. Narula J, Nakano M, Virmani R, et al. Histopathologic characteristics of atherosclerotic coronary disease and implications of the findings for the invasive and noninvasive detection of vulnerable plaques. *J Am Coll Cardiol.* 2013;61(10):1041–1051. <https://doi.org/10.1016/j.jacc.2012.10.054>.
  53. Takamura K, Fujimoto S, Kondo T, et al. Incremental prognostic value of coronary computed tomography angiography: high-risk plaque characteristics in asymptomatic patients. *J Atheroscler Thromb.* July 2017:39115. <https://doi.org/10.5551/jat.39115>.
  54. Thomsen C, Abdulla J. Characteristics of high-risk coronary plaques identified by computed tomographic angiography and associated prognosis: a systematic review and meta-analysis. *European Heart Journal - Cardiovascular Imaging.* 2016;17(2):120–129. <https://doi.org/10.1093/ehjci/jev325>.
  55. Puchner SB, Liu T, Mayrhofer T, et al. High-risk plaque detected on coronary CT angiography predicts acute coronary syndromes independent of significant stenosis in acute chest pain: results from the ROMICAT-II trial. *J Am Coll Cardiol.* 2014;64(7):684–692. <https://doi.org/10.1016/j.jacc.2014.05.039>.
  56. Ferencik M, Mayrhofer T, Bittner DO, et al. Use of high-risk coronary atherosclerotic plaque detection for risk stratification of patients with stable chest pain: a secondary analysis of the PROMISE randomized clinical trial. *JAMA Cardiol.* 2018;3(2):144–152. <https://doi.org/10.1001/jamacardio.2017.4973>.
  57. Williams MC, et al. Coronary artery plaque characteristics associated with adverse outcomes in the SCOT-HEART study. *J Am Coll Cardiol.* 2019;73(3):291–301.
  58. Maroules CD, Hamilton-Craig C, Branch K, et al. Coronary artery disease reporting and data system (CAD-RADSTM): inter-observer agreement for assessment categories and modifiers. *J Cardiovasc Comput Tomogr.* 2018;12(2):125–130. <https://doi.org/10.1016/j.jcct.2017.11.014>.
  59. Gaur S, Øvrehus KA, Dey D, et al. Coronary plaque quantification and fractional flow reserve by coronary computed tomography angiography identify ischaemia-causing lesions. *Eur Heart J.* 2016;37(15):1220–1227. <https://doi.org/10.1093/eurheartj/ehv690>.
  60. Diaz-Zamudio M, Fuchs TA, Slomka P, et al. Quantitative plaque features from coronary computed tomography angiography to identify regional ischemia by myocardial perfusion imaging. *European Heart Journal - Cardiovascular Imaging.* 2017;18(5):499–507. <https://doi.org/10.1093/ehjci/jew274>.
  61. Doris MK, Otaki Y, Arnson Y, et al. Non-invasive fractional flow reserve in vessels without severe obstructive stenosis is associated with coronary plaque burden. *J Cardiovasc Comput Tomogr.* May 2018. <https://doi.org/10.1016/j.jcct.2018.05.003>.
  62. Nakanishi R, Ceponiene I, Osawa K, et al. Plaque progression assessed by a novel semi-automated quantitative plaque software on coronary computed tomography angiography between diabetes and non-diabetes patients: a propensity-score matching study. *Atherosclerosis.* 2016;255:73–79. <https://doi.org/10.1016/j.atherosclerosis.2016.11.004>.
  63. Tesche C, Plank F, De Cecco CN, et al. Prognostic implications of coronary CT angiography-derived quantitative markers for the prediction of major adverse cardiac events. *J Cardiovasc Comput Tomogr.* 2016;10(6):458–465. <https://doi.org/10.1016/j.jcct.2016.08.003>.
  64. Hell MM, Motwani M, Otaki Y, et al. Quantitative global plaque characteristics from coronary computed tomography angiography for the prediction of future cardiac mortality during long-term follow-up. *European Heart Journal - Cardiovascular Imaging.* 2017;18(12):1331–1339. <https://doi.org/10.1093/ehjci/jex183>.
  65. Kolosváry M, Karády J, Szilveszter B, et al. Radiomic features are superior to conventional quantitative computed tomographic metrics to identify coronary plaques with napkin-ring sign. *Circulation: Cardiovascular Imaging.* 2017;10(12) <https://doi.org/10.1161/CIRCIMAGING.117.006843>.
  66. Linde JJ, Kofoed KF, Sørgaard M, et al. Cardiac computed tomography guided treatment strategy in patients with recent acute-onset chest pain: results from the randomised, controlled trial: CARDiac cT in the treatment of acute CHEst pain (CATCH). *Int J Cardiol.* 2013;168(6):5257–5262. <https://doi.org/10.1016/j.ijcard.2013.08.020>.
  67. Uretsky S, Argulian E, Supariwala A, et al. Comparative effectiveness of coronary CT angiography vs stress cardiac imaging in patients following hospital admission for chest pain work-up: the Prospective First Evaluation in Chest Pain (PERFECT) Trial. *J Nucl Cardiol.* 2017;24(4):1267–1278. <https://doi.org/10.1007/s12350-015-0354-6>.