



THE UNIVERSITY *of* EDINBURGH

Edinburgh Research Explorer

Outpatient versus inpatient treatment for acute pulmonary embolism

Citation for published version:

Yoo, HHB, Nunes-Nogueira, VS, Fortes Villas Boas, PJ & Broderick, C 2019, 'Outpatient versus inpatient treatment for acute pulmonary embolism', *Cochrane Database of Systematic Reviews*.
<https://doi.org/10.1002/14651858.CD010019.pub3>

Digital Object Identifier (DOI):

[10.1002/14651858.CD010019.pub3](https://doi.org/10.1002/14651858.CD010019.pub3)

Link:

[Link to publication record in Edinburgh Research Explorer](#)

Document Version:

Publisher's PDF, also known as Version of record

Published In:

Cochrane Database of Systematic Reviews

General rights

Copyright for the publications made accessible via the Edinburgh Research Explorer is retained by the author(s) and / or other copyright owners and it is a condition of accessing these publications that users recognise and abide by the legal requirements associated with these rights.

Take down policy

The University of Edinburgh has made every reasonable effort to ensure that Edinburgh Research Explorer content complies with UK legislation. If you believe that the public display of this file breaches copyright please contact openaccess@ed.ac.uk providing details, and we will remove access to the work immediately and investigate your claim.





Cochrane
Library

Cochrane Database of Systematic Reviews

Outpatient versus inpatient treatment for acute pulmonary embolism (Review)

Yoo HHB, Nunes-Nogueira VS, Fortes Villas Boas PJ, Broderick C

Yoo HHB, Nunes-Nogueira VS, Fortes Villas Boas PJ, Broderick C.
Outpatient versus inpatient treatment for acute pulmonary embolism.
Cochrane Database of Systematic Reviews 2019, Issue 3. Art. No.: CD010019.
DOI: 10.1002/14651858.CD010019.pub3.

www.cochranelibrary.com

TABLE OF CONTENTS

HEADER	1
ABSTRACT	1
PLAIN LANGUAGE SUMMARY	2
SUMMARY OF FINDINGS FOR THE MAIN COMPARISON	3
BACKGROUND	6
OBJECTIVES	7
METHODS	7
RESULTS	11
Figure 1.	12
Figure 2.	14
Figure 3.	15
DISCUSSION	17
AUTHORS' CONCLUSIONS	19
ACKNOWLEDGEMENTS	19
REFERENCES	20
CHARACTERISTICS OF STUDIES	23
DATA AND ANALYSES	30
Analysis 1.1. Comparison 1 Outpatient versus inpatient treatment, Outcome 1 Short-term all-cause mortality.	31
Analysis 1.2. Comparison 1 Outpatient versus inpatient treatment, Outcome 2 Long-term all-cause mortality.	32
Analysis 1.3. Comparison 1 Outpatient versus inpatient treatment, Outcome 3 Major bleeding within 14 days.	33
Analysis 1.4. Comparison 1 Outpatient versus inpatient treatment, Outcome 4 Major bleeding within 90 days.	34
Analysis 1.5. Comparison 1 Outpatient versus inpatient treatment, Outcome 5 Minor bleeding.	35
Analysis 1.6. Comparison 1 Outpatient versus inpatient treatment, Outcome 6 Recurrent pulmonary embolism within 90 days.	36
Analysis 1.7. Comparison 1 Outpatient versus inpatient treatment, Outcome 7 Satisfaction questionnaire.	37
APPENDICES	37
FEEDBACK	45
WHAT'S NEW	46
HISTORY	47
CONTRIBUTIONS OF AUTHORS	47
DECLARATIONS OF INTEREST	48
SOURCES OF SUPPORT	48
DIFFERENCES BETWEEN PROTOCOL AND REVIEW	48
INDEX TERMS	49

[Intervention Review]

Outpatient versus inpatient treatment for acute pulmonary embolism

Hugo HB Yoo¹, Vania Santos Nunes-Nogueira¹, Paulo J Fortes Villas Boas¹, Cathryn Broderick²

¹Department of Internal Medicine, Botucatu Medical School, São Paulo State University-UNESP, Botucatu, Brazil. ²Usher Institute of Population Health Sciences and Informatics, University of Edinburgh, Edinburgh, UK

Contact address: Hugo HB Yoo, Department of Internal Medicine, Botucatu Medical School, São Paulo State University-UNESP, Botucatu, São Paulo, 18618-687, Brazil. hugo.yoo@unesp.br.

Editorial group: Cochrane Vascular Group.

Publication status and date: New search for studies and content updated (no change to conclusions), published in Issue 3, 2019.

Citation: Yoo HHB, Nunes-Nogueira VS, Fortes Villas Boas PJ, Broderick C. Outpatient versus inpatient treatment for acute pulmonary embolism. *Cochrane Database of Systematic Reviews* 2019, Issue 3. Art. No.: CD010019. DOI: 10.1002/14651858.CD010019.pub3.

Copyright © 2019 The Cochrane Collaboration. Published by John Wiley & Sons, Ltd.

ABSTRACT

Background

Pulmonary embolism (PE) is a common life-threatening cardiovascular condition, with an incidence of 23 to 69 new cases per 100,000 people each year. For selected low-risk patients with acute PE, outpatient treatment might provide several advantages over traditional inpatient treatment, such as reduction of hospitalisations, substantial cost savings, and improvements in health-related quality of life. This is an update of the review first published in 2014.

Objectives

To compare the efficacy and safety of outpatient versus inpatient treatment in low-risk patients with acute PE for the outcomes of all-cause and PE-related mortality; bleeding; adverse events such as haemodynamic instability; recurrence of PE; and patients' satisfaction.

Search methods

The Cochrane Vascular Information Specialist searched the Cochrane Vascular Specialised Register, CENTRAL, MEDLINE, Embase, CINAHL and AMED databases, and the World Health Organization International Clinical Trials Registry Platform and ClinicalTrials.gov trials registers, to 26 March 2018. We also undertook reference checking to identify additional studies.

Selection criteria

We included randomised controlled trials of outpatient versus inpatient treatment of adults (aged 18 years and over) diagnosed with low-risk acute PE.

Data collection and analysis

Two review authors selected relevant trials, assessed methodological quality, and extracted and analysed data. We calculated effect estimates using risk ratio (RR) with 95% confidence intervals (CIs), or mean differences (MDs) with 95% CIs. We used standardised mean differences (SMDs) to combine trials that measured the same outcome but used different methods. We assessed the quality of the evidence using GRADE criteria.

Main results

One new study was identified for this 2018 update, bringing the total number of included studies to two and the total number of participants to 451. Both trials discharged patients randomised to the outpatient group within 36 hours of initial triage and both followed participants for 90 days. One study compared the same treatment regimens in both outpatient and inpatient groups, and the other study used different treatment regimes. There was no clear difference in treatment effect for the outcomes of short-term mortality (30 days) (RR 0.33, 95% CI 0.01 to 7.98, $P = 0.49$; low-quality evidence), long-term mortality (90 days) (RR 0.98, 95% CI 0.06 to 15.58, $P = 0.99$, low-quality evidence), major bleeding at 14 days (RR 4.91, 95% CI 0.24 to 101.57, $P = 0.30$; low-quality evidence) and at 90 days (RR 6.88, 95% CI 0.36 to 132.14, $P = 0.20$; low-quality evidence), minor bleeding (RR 1.08, 95% CI 0.07 to 16.79; $P = 0.96$, low-quality evidence), recurrent PE within 90 days (RR 2.95, 95% CI 0.12 to 71.85, $P = 0.51$, low-quality evidence), and participant satisfaction (RR 0.97, 95% CI 0.90 to 1.04, $P = 0.39$; moderate-quality evidence). We downgraded the quality of the evidence because the CIs were wide and included treatment effects in both directions, the sample sizes and numbers of events were small, and because the effect of missing data and the absence of publication bias could not be verified. PE-related mortality, and adverse effects such as haemodynamic instability and compliance, were not assessed by the included studies.

Authors' conclusions

Currently, only low-quality evidence is available from two published randomised controlled trials on outpatient versus inpatient treatment in low-risk patients with acute PE. The studies did not provide evidence of any clear difference between the interventions in overall mortality, bleeding and recurrence of PE.

PLAIN LANGUAGE SUMMARY

Outpatient versus inpatient treatment for acute pulmonary embolism

Background

Pulmonary embolism (PE) is the third most common and life-threatening cardiovascular disease worldwide. There are between 23 and 69 new cases of PE per 100,000 people each year. For selected low-risk patients with acute (sudden-onset) PE, outpatient (home) treatment might provide several advantages over traditional inpatient treatment, such as reduction of hospital admissions, substantial cost savings, and improvements in health-related quality of life. This systematic review aimed to evaluate the risks and benefits of outpatient versus inpatient treatment in low-risk patients with acute PE.

Study characteristics

We searched scientific databases for clinical trials of low-risk adults (aged 18 years and over) allocated to home (outpatient) management or hospital (inpatient) management of acute PE. The evidence is current to March 2018.

Key results

We included two studies, which included a total of 453 people. We are uncertain whether, compared with inpatient treatment, outpatient treatment has an important effect on number of deaths, bleeding, recurrence of PE, and patient satisfaction because the results were imprecise and the studies did not report side effects such as haemodynamic instability (where drugs or procedures are needed to maintain a stable blood pressure), and compliance (how well people follow medical advice).

Quality of the evidence

The evidence from the included studies was of low quality because of imprecision in the results. This was due to there being only small numbers of people in the studies (and small numbers of events), and because we could not confirm the absence of publication bias (reports of studies where no effect was shown might not be published). Therefore, further well-conducted randomised controlled trials (where people are allocated at random to one of two or more treatment groups, one of which is a control treatment) are required before informed practice decisions can be made.

SUMMARY OF FINDINGS FOR THE MAIN COMPARISON *[Explanation]*

Outpatient compared with inpatient treatment for acute pulmonary embolism						
Patient or population: people with low-risk acute pulmonary embolism Settings: outpatient and inpatient settings Intervention: outpatient setting ¹ Comparison: inpatient setting ²						
Outcomes	Anticipated absolute effects* (95% CI)		Relative effect (95% CI)	No. of participants (RCTs)	Quality of the evidence (GRADE)	Comments
	risk with inpatient setting	risk with outpatient setting				
Short-term all-cause mortality Follow-up: 7-10 days after randomisation	Study population		RR 0.33 (0.01 to 7.98)	453 (2)	⊕⊕○○ low ³	1/168 deaths in the inpatient group vs 0/171 deaths in the outpatient group. No deaths occurred in Peacock 2018 . No deaths reported by Aujesky 2011 were PE-related.
	4 per 1000	1 per 1000 (0 to 35)				
Long-term all-cause mortality Follow-up: 90 days after randomisation	Study population		RR 0.98 (0.06 to 15.58)	451 ⁴ (2)	⊕⊕○○ low ³	1/168 deaths in the inpatient group vs 1/171 deaths in the outpatient group. No deaths occurred in Peacock 2018 . No deaths reported by Aujesky 2011 were PE-related.
	4 per 1000	4 per 1000 (0 to 68)				
Major bleeding Follow-up: 14 days after randomisation	Not estimable		RR 4.91 (0.24 to 101.57)	445 (2)	⊕⊕○○ low ³	0/168 major bleeding events in the inpatient group vs 2/171 major bleeding events in the outpatient group.

					No major bleeding occurred in Peacock 2018 .
Major bleeding Follow-up: 90 days after randomisation	Not estimable	RR 6.88 (0.36 to 132.445 14) (2)		⊕⊕○○ low ³	0/168 major bleeding events in the inpatient group vs 3/171 major bleeding events in the outpatient group. No major bleeding occurred in Peacock 2018 .
Minor bleeding	Study population	RR 1.08 (0.07 to 16.79) 106 (1)		⊕⊕○○ low ³	One participant in each treatment arm reported minor bleeding
	18 per 1000 20 per 1000 (1 to 305)				
Recurrent PE Follow-up: within 90 days	Not estimable	RR 2.95 (CI 0.12 to 71.445 85) (2)		⊕⊕○○ low ³	0/168 recurrent PE in inpatient groups vs 1/171 recurrent PE in the outpatient group, had a recurrent PE within 90 days. No recurrent PE occurred in Peacock 2018 .

*The basis for the **assumed risk** (e.g. the median control group risk across studies) is provided in footnotes. The **corresponding risk** (and its 95% confidence interval) is based on the assumed risk in the comparison group and the **relative effect** of the intervention (and its 95% CI).

CI: confidence interval; **RCT:** randomised controlled trial; **RR:** risk ratio; **PE:** pulmonary embolism

GRADE Working Group grades of evidence

High quality: Further research is very unlikely to change our confidence in the estimate of effect.

Moderate quality: Further research is likely to have an important impact on our confidence in the estimate of effect and may change the estimate.

Low quality: Further research is very likely to have an important impact on our confidence in the estimate of effect and is likely to change the estimate.

Very low quality: We are very uncertain about the estimate.

- ¹ Outpatients received subcutaneous enoxaparin twice daily ([Aujesky 2011](#)); or rivaroxaban 15 mg orally twice daily for the first 21 days, followed by 20 mg orally once daily for approximately 69 days, for a total treatment duration of 90 days ([Peacock 2018](#)).
- ² In [Aujesky 2011](#), the inpatient group was admitted to hospital and received subcutaneous enoxaparin 1 mg/kg twice daily. In [Peacock 2018](#), the inpatient group was admitted to hospital and received variable pharmacotherapy (standard-of-care treatment).
- ³ We downgraded by two levels due to the overall small sample size, small number of events, imprecision in the confidence intervals and the fact that publication bias could not be discounted.
- ⁴ Additional information was requested from the study authors but as they were unable to provide it, we used only the available data.

BACKGROUND

Description of the condition

Pulmonary embolism (PE) is a common life-threatening cardiovascular illness. It is a potentially fatal disease that, despite adequate treatment, is still associated with high morbidity and mortality; the reported incidence in the US exceeds one case per 1000 population and the 90-day all-cause mortality is as high as 9% to 15% after diagnosis (Goldhaber 1999; Laporte 2008). In 2005, Heit and colleagues estimated that in the US each year there are around 237,000 cases of non-fatal PE and 294,000 cases of fatal PE (Heit 2005). In 2007, Cohen and colleagues reported that of all people admitted to hospitals, 1% die of acute PE and about 10% of all in-hospital deaths are PE-related (Cohen 2007).

The diagnosis of PE has improved with advances in imaging technology, and the management of PE has changed with the introduction of treatments such as non-vitamin K antagonist oral anticoagulants (NOACs). The mortality rate of PE has also changed. In 2011, Pollack and colleagues reported a 5.4% all-cause mortality rate across 22 medical centres in the US (Pollack 2011). In the international Computerized Registry of Patients with Venous Thromboembolism (RIETE registry) of over 23,000 patients, Jiménez 2016 noted a 30-day all-cause mortality rate of 5.9%, and Vinson 2018 found a 30-day all-cause mortality rate of a 4.4%, across 21 US medical centres.

The prognosis and treatment of people diagnosed with acute PE are related to the initial haemodynamic status. High-risk PE (massive PE) - defined by the presence of shock or persistent arterial hypotension (systolic blood pressure below 90 mmHg or systolic blood pressure drop by 40 mmHg or more, for over 15 minutes, if not caused by new-onset arrhythmia, hypovolaemia, or sepsis) - accounts for 5% of all cases of PE and has a poor prognosis, with a short-term mortality of more than 15% (Konstantinides 2014). Conversely, in haemodynamically stable patients, non-high-risk (low risk) PE (non-massive PE) accounts for 95% of all cases of PE, and has significantly lower short-term mortality which ranges between less than 1% and 15% (Buller 2003; Ibrahim 2008; Konstantinides 2014; Quinlan 2004). The question is whether people with low-risk PE should be treated as outpatients or inpatients.

Description of the intervention

The traditional initial anticoagulant therapy in acute PE in hospitals is administration of standardised intravenous unfractionated heparin (UFH), subcutaneous low molecular weight heparins (LMWH) or fondaparinux started together with oral vitamin K antagonists (referred as the overlap treatment period) for at least five days until the prothrombin time yields an international normalised ratio (INR) above 2.0 for two consecutive days.

Since the 1990s, subcutaneous LMWH have largely replaced intravenous UFH therapy and have enabled outpatient therapy for deep vein thrombosis (DVT) in many situations without laboratory anticoagulant monitoring (Othieno 2018). Although most people with acute PE are hospitalised during initial therapy, it is feasible that in selected low-risk people, outpatient care can safely and effectively be used rather than inpatient care.

The non-vitamin K antagonist oral anticoagulants (NOACs), known as factor Xa inhibitors (e.g. rivaroxaban, apixaban and edoxaban) and direct thrombin inhibitors (e.g. dabigatran), are available in many countries for the treatment of venous thromboembolism (VTE). In patients with PE who are haemodynamically stable (PE without hypotension), the use of NOACs is efficient and safe (Ghazvinian 2018). The tenth edition of the American College of Chest Physicians (ACCP) guidelines suggests that initial parenteral anticoagulation is given before dabigatran and edoxaban, while rivaroxaban and apixaban do not require initial parenteral anticoagulation (Kearon 2016).

Studies comparing inpatient versus outpatient treatment of PE have used early discharge as soon as patients achieve a clinically stable condition (Aujesky 2011; Otero 2010). Treatment at home of a substantial number of patients with low-risk acute PE (even during the traditional period of overlap with heparin and vitamin K antagonists) seems to be a feasible option.

Most cases of acute PE are managed within a hospital setting because of the uncertainty in safely identifying low-risk patients. In addition, during management of acute PE, some patients require intensive treatment in hospital due to potentially fatal complications such as clinical deterioration. Therefore, when considering management in an outpatient setting it is important to identify those patients who are considered as being at low risk of major (fatal) complications.

Several risk assessment strategies, such as clinical scores, imaging modalities and laboratory biomarkers, are available to identify patients who could be treated at home safely. The Agterof 2010 study reported that patients with low N-terminal pro-brain natriuretic peptide (NT-proBNP) levels (less than 500 pg/mL), and who are haemodynamically stable, would be a safe group of patients to receive care in an outpatient setting. Furthermore, Lankeit 2011 considered the troponin T (TnT) assay, along with simplified Pulmonary Embolism Severity Index (sPESI), as a risk assessment tool to identify patients with acute PE who could be treated at home safely.

In addition, there are four scoring systems to select low-risk patients with acute PE for outpatient management: the Geneva prediction score (GPS), the Pulmonary Embolism Severity Index (PESI), the simplified version of the PESI (sPESI) and Hestia criteria (Aujesky 2005; den Exter 2016b; Jiménez 2010; Wicki 2000). The GPS was derived from 296 outpatients confirmed with symptomatic acute PE and identifies six independent predictors (cancer, heart failure, previous DVT, systolic blood pressure less than 100 mmHg, partial pressure of oxygen dissolved in arterial blood

(PaO₂) less than 8 kPa and presence of DVT on ultrasound exam) of an adverse outcome (death, recurrent thromboembolic event or major bleeding) in a three-month follow-up period (Wicki 2000, see Appendix 1). The PESI criteria were derived from 15,531 inpatients discharged with PE, which identified 11 factors independently associated with 30-day mortality (age, male gender, cancer, heart failure, chronic lung disease, pulse rate 110 beats/minutes or greater, systolic blood pressure less than 100 mm Hg, respiratory rate 30 breaths/minute or greater, body temperature less than 36°C, altered mental status and oxyhaemoglobin saturation less than 90%) (Aujesky 2005, see Appendix 2).

The sPESI was developed with six items that may be more useful and practical for routine utilisation in emergency departments. It was shown that the sPESI can predict 30-day mortality after acute PE and that it has similar prognostic accuracy when compared to the original PESI (Jiménez 2010, see Appendix 3).

The Hestia criteria were derived from a multicentre prospective cohort study in 297 patients treated as outpatients among 581 patients with PE (Zondag 2011, see Appendix 4). The Hestia criteria used 11 practical clinical exclusion rules to select patients for outpatient treatment. Later on, these criteria were validated in 550 patients by combining the cutoff NT-proBNP levels for outpatient treatment as 500 ng/L (den Exter 2016b).

Jiménez and colleagues assessed the ability of two models (GPS and PESI) in comparing and validating a distinct set of ambulatory patients with acute symptomatic PE to identify low-risk patients for anticoagulant therapy in the outpatient setting (Jiménez 2007). In this study, the PESI quantified the prognosis of patients with acute PE significantly better than the GPS. Hence, the PESI can select and identify low-risk patients for adverse events within 30 days of anticoagulant therapy in acute PE with very good accuracy. Zondag and colleagues compared the performance of the sPESI and the Hestia criteria in selecting low-risk patients for anticoagulant therapy in the outpatient setting (Zondag 2013). This study demonstrated that both the sPESI and the Hestia criteria classified different patients as being suitable for outpatient treatment and suggests that when the Hestia criteria is applied it may identify a proportion of patients considered as high risk by sPESI (such as those with malignant diseases, cardiopulmonary comorbidities or advanced age) to be treated at home.

Why it is important to do this review

The eighth edition of the ACCP guidelines discussed the feasibility of outpatient treatment in acute PE among a substantial proportion of patients, but provided no formal recommendations (Kearon 2008). In the same way, the task force of the European Society of Cardiology (ESC) did not clearly recommend early discharge or outpatient management for acute PE in selected patients (Konstantinides 2014). The ninth edition of the ACCP guidelines suggested early discharge over standard discharge (e.g. after the first five days of treatment) for patients with low-risk PE whose

home circumstances were adequate (Grade 2B) (Kearon 2012). However, patients who preferred the security of the hospital to the convenience and comfort of home were likely to choose hospitalisation over home treatment.

The increasing availability of NOACs as a treatment of acute PE allows management without the need for hospitalisation. Hence, the tenth edition of the ACCP guidelines suggested home treatment of acute PE, provided that patients fulfil the following conditions: 1) clinically stable with good cardiopulmonary reserve; 2) no contraindications such as recent haemorrhage, severe kidney or liver disease, or severe thrombocytopenia (i.e. platelets less than 70,000/mm³); 3) expected to be compliant with treatment; and 4) the patient feels confident to be treated at home. However, in patients with right ventricular dysfunction or increased cardiac biomarker levels, out-of-hospital treatment is not recommended (Kearon 2016).

The 2018 guideline from the British Thoracic Society proposes similar recommendations (Howard 2018). Patients with confirmed PE should be risk-stratified using a validated clinical risk score: patients in PESI class I/II, sPESI class 0, or those meeting the Hestia criteria should be considered for outpatient management of PE. Where PESI or sPESI is used and indicates a low risk, a set of exclusion criteria should be considered for the outpatient management of PE (Appendix 5).

Outpatient treatment instead of traditional inpatient treatment in selected low-risk patients with acute PE can provide several advantages, for example, a reduction in number of hospitalisations, a substantial cost saving and an improvement in health-related quality of life (Dasta 2015; Fanikos 2013). It is therefore important to establish whether, in clinically stable, low-risk acute PE patients, outpatient treatment is at least as safe and effective as inpatient treatment.

OBJECTIVES

To compare the efficacy and safety of outpatient versus inpatient treatment in low-risk patients with acute PE for the outcomes of all-cause and PE-related mortality; bleeding; and adverse events such as haemodynamic instability, recurrence of PE and patients' satisfaction.

METHODS

Criteria for considering studies for this review

Types of studies

We included randomised controlled trials (RCTs) and quasi-RCTs (in which allocation to treatment was obtained by alternation, use of alternate medical records, date of birth or other predictable methods) in this systematic review. We included quasi-RCTs as we did not anticipate finding many RCTs in this area.

Types of participants

We included adults (18 years and older) diagnosed with low-risk acute pulmonary embolism (PE), defined as acute onset of dyspnoea or chest pain together with a new contrast-filling defect on single- or multi-detector computed tomography (CT) pulmonary angiography or pulmonary digital angiography, a new high-probability ventilation-perfusion lung scan or documentation of a new proximal deep vein thrombosis (DVT) either by venous ultrasonography or contrast venography.

We considered people to be of low risk if they were classified as low risk by any validated or non-validated measurement tool that aimed to classify mortality risk rate related to PE, such as the Geneva prediction score (GPS), the Pulmonary Embolism Severity Index (PESI), the simplified PESI (sPESI) or the Hestia criteria.

Types of interventions

- Intervention group: participants allocated to home (outpatient) management for acute PE.
- Control group: participants allocated to hospital (inpatient) management for acute PE.

We considered outpatients as people who were discharged within 36 hours after the low-risk acute PE diagnosis and who then completed treatment at home (outpatient care).

Types of outcome measures

Primary outcomes

- Short-term all-cause mortality (from the date of randomisation to 7 to 10 days).
- Long-term all-cause mortality (from the date of randomisation to 90 days).

Long-term all-cause mortality at 90 days included any all-cause mortality noted from the date of randomisation to 90 days. We considered both all-cause mortality and PE-related mortality.

Secondary outcomes

- Bleeding (from the date of randomisation to 90 days): we defined major bleeding as fatal or clinically overt bleeding resulting in fall of haemoglobin by 2 g/L or more or bleeding into critical anatomical sites (subdural haematoma, intraspinal haemorrhage, retroperitoneal, intraocular, pericardial, atraumatic

intra-articular) or leading to transfusion of 2 U or more of blood or red cells (Schulman 2005). We defined minor bleeding as bleeding requiring intervention but not qualifying as a major bleeding, including bleeding precipitating treatment cessation (Schulman 2005).

- Adverse effects, such as haemodynamic instability (from the date of randomisation to 90 days).
- Recurrence of PE (from the date of randomisation to 90 days).
- Participant satisfaction or compliance, or both (from the date of randomisation to 90 days): we accepted methods used by study investigators, including Likert scale questionnaires.

Search methods for identification of studies

Electronic searches

The Cochrane Vascular Information Specialist conducted systematic searches of the following databases for RCTs and controlled clinical trials, with no restrictions on language, publication year or publication status:

- the Cochrane Vascular Specialised Register via the Cochrane Register of Studies (CRS-Web, searched on 28 March 2018);
- the Cochrane Central Register of Controlled Trials (CENTRAL) Cochrane Register of Studies Online (2018, Issue 2);
- MEDLINE (Ovid MEDLINE® Epub Ahead of Print, In-Process & Other Non-Indexed Citations, Ovid MEDLINE® Daily and Ovid MEDLINE®) (searched from 1 January 2017 to 26 March 2018);
- Embase Ovid (searched from 1 January 2017 to 26 March 2018);
- CINAHL Ebsco (searched from 1 January 2017 to 26 March 2018);
- AMED Ovid (searched from 1 January 2017 to 28 March 2018).

The Information Specialist modelled search strategies for other databases on the search strategy designed for CENTRAL. Where appropriate, they were combined with adaptations of the highly sensitive search strategy designed by Cochrane for identifying RCTs and controlled clinical trials (as described in Chapter 6 of the *Cochrane Handbook for Systematic Reviews of Interventions* Lefebvre 2011). Search strategies for major databases are provided in Appendix 6.

The Information Specialist searched the following trials registries on 28 March 2018:

- the World Health Organization International Clinical Trials Registry Platform (who.int/trialsearch);
- ClinicalTrials.gov (clinicaltrials.gov).

Searching other resources

We checked the reference lists of the identified studies for additional citations.

Data collection and analysis

Selection of studies

Two review authors (HHBY, VSNN) independently screened the trials identified by the literature search. We resolved disagreements by consulting with the third review author (PJFVB) and consulted with him regarding quality assurance of the processes.

Data extraction and management

Two review authors (HHBY, VSNN) independently extracted data. We resolved any discrepancies by discussion. We used a standard data extraction form to extract the following information: characteristics of the study (design, methods of randomisation), participants, interventions and outcomes (types of outcome measures, adverse events). We then checked for accuracy before entering the data in Review Manager 5 software ([Review Manager 2014](#)).

Assessment of risk of bias in included studies

We assessed study quality using Cochrane's 'Risk of bias' tool ([Higgins 2011](#)). We used the following six criteria.

Random sequence generation

We recorded random sequence generation as 'low risk of bias' where the method used was either adequate or unlikely to introduce bias; as 'unclear risk of bias' where there was insufficient information to assess whether the method used was likely to introduce bias; or as 'high risk of bias' when the method used (e.g. quasi-randomised trials) was improper and likely to introduce bias.

Allocation concealment

We recorded allocation concealment as 'low risk of bias' when the method used (e.g. central allocation) was unlikely to introduce bias in the final observed effect; as 'unclear risk of bias' when there was insufficient information to assess whether the method used was likely to introduce bias in the estimate of effect; or as 'high risk of bias' when the method used (e.g. open random allocation schedule) was likely to introduce bias in the final observed effect.

Blinding

For this clinical review, it is not possible to blind participants and investigators for treatment allocation (i.e. inpatient and outpatient), therefore we did not consider performance bias as part of the 'Risk of bias' assessment. We did consider blinding of outcome measures. We recorded blinding of assessors as 'low risk of bias' if blinding was performed adequately, or the outcome measurement was not likely to be influenced by lack of blinding; as 'unclear risk of bias' if there was insufficient information to assess whether the type of blinding used was likely to introduce bias in the estimate of effect; or 'high risk of bias' if there was no blinding or incomplete blinding, and the outcome or the outcome measurement was likely to be influenced by lack of blinding.

Incomplete outcome data

We recorded incomplete outcome data as 'low risk of bias' when the underlying reasons for missing data were unlikely to make treatment effects depart from plausible values, or proper methods were employed to handle missing data. In addition, we considered a withdrawal rate less than 20% in each group to be 'low risk of bias'. We recorded an 'unclear risk of bias' when there was insufficient information to assess whether the missing data mechanism, in combination with the method used to handle missing data, was likely to introduce bias in the estimate of effect; and as 'high risk of bias' when the crude estimate of effects (e.g. complete-case estimate) was clearly biased due to the underlying reasons for missing data, and the methods used to handle missing data were unsatisfactory.

Selective reporting

We recorded selective reporting as 'low risk of bias' when the trial protocol was available and all of the trial's prespecified outcomes that were of interest in the review were reported. We recorded an 'unclear risk of bias' when there was insufficient information to assess whether the magnitude and direction of the observed effect was related to selective outcome reporting; or as 'high risk of bias' when not all of the trial's prespecified primary outcomes were reported.

Other bias

We considered aspects of methodology that might have been influenced by vested interests and which may lead directly to a risk of bias as 'Other bias'.

Two review authors (VSNN, PJFVB), independently made a judgement as to whether the risk of bias for each criterion was considered to be 'low', 'unclear' or 'high'. We resolved disagreements by discussion. We considered trials that were classified as 'low risk of bias' in sequence generation, allocation concealment, blinding of outcome assessors, incomplete data and selective outcome reporting as trials that were of overall low risk of bias.

Measures of treatment effect

Binary outcomes

For dichotomous data, we used risk ratios (RRs) as the effect measure with 95% confidence intervals (CIs).

Continuous outcomes

For continuous data, we presented the results as mean differences (MDs) with 95% CIs. When pooling data across studies, we estimated the MDs if the outcomes were measured in the same way between trials. We used standardised mean differences (SMDs) to combine trials that measured the same outcome but used different methods.

Unit of analysis issues

The unit of analysis was each participant recruited into the trials.

Dealing with missing data

An intention-to-treat (ITT) analysis is an analysis in which all the participants in a trial are analysed according to the intervention to which they were allocated, whether they received the intervention or not. We assumed that participants who dropped out were non-respondents. For each trial, we reported whether or not the investigators stated if the analysis was performed according to the ITT principle. If participants were excluded after allocation, we reported any details provided in full. Furthermore, we performed the analysis on an ITT basis whenever possible (Newell 1992). Otherwise, we adopted the 'available-case analysis'. Study authors provided some further information on missing data when requested. When this was not possible, we only used available data in the analyses.

Assessment of heterogeneity

We looked for clinical heterogeneity by examination of the study details and then tested for statistical heterogeneity between trial results using the Chi² test and the I² statistic (Deeks 2011). As recommended in the *Cochrane Handbook for Systematic Reviews of Interventions* (Higgins 2011), we considered size and direction of effect and interpreted heterogeneity using the following I² thresholds for interpretation:

- 0% to 40%: might not be important;
- 30% to 60%: might represent moderate heterogeneity;
- 50% to 90%: might represent substantial heterogeneity;
- 75% to 100%: considerable heterogeneity.

Assessment of reporting biases

We planned to assess the likelihood of potential publication bias using funnel plots in addition to assessing the risk of selective outcome reporting considered under assessment of risk of bias in included studies. When small studies in a meta-analysis tend to show larger treatment effects, we planned to consider other causes including selection biases, poor methodological quality, heterogeneity and chance. However, the number of studies included in the review prevented this.

Data synthesis

We used the fixed-effect model to analyse data. If we identified substantial heterogeneity (e.g. I² greater 50%), we planned to compute pooled estimates of the treatment effect for each outcome using a random-effects model (with two or more studies). We undertook quantitative analysis of outcomes on an ITT basis.

Subgroup analysis and investigation of heterogeneity

In the case of substantial clinical heterogeneity (I² greater than 50%), we planned to use subgroup analysis to explore the results. We planned to perform the Chi² test for subgroup differences, set at a P value of 0.05. We planned to carry out analysis of the following subgroups.

- Low molecular weight heparins (LMWH) (e.g. tinzaparin, enoxaparin, dalteparin) and selective factor Xa inhibitors (e.g. fondaparinux)
- Once-daily versus twice-daily administration of LMWH and selective factor Xa inhibitors
- Outpatient discharge period (24 hours or less versus more than 24 hours)
- Classification criteria (i.e. PESI versus GPS)
- Inpatients and outpatients with same treatment regimens versus inpatients and outpatients treated with different treatment regimens

Sensitivity analysis

If sufficient numbers of studies were identified for inclusion, we planned to perform a sensitivity analysis to explore causes of heterogeneity and the robustness of the results. We planned to include the following factors in the sensitivity analysis, separating studies according to:

- trials with low risk of bias versus trials with high risk of bias;
- rates of withdrawal for each outcome (less than 20% versus 20% or greater).

As only two studies were included we were unable to do this.

'Summary of findings' table

We used the principles of the GRADE system to assess the quality of the body of evidence associated with specific primary outcomes

(short- and long-term mortality), as well as secondary outcomes (bleeding and recurrent PE), in our review and construct a 'Summary of findings' table using the GRADE software ([GRADEpro GDT 2015](#); [Guyatt 2008](#)). The GRADE approach appraises the quality of a body of evidence based on the extent to which one can be confident that an estimate of effect or association reflects the item being assessed. The assessment of the quality of a body of evidence considers within-study risk of bias (methodological quality), the directness of the evidence, heterogeneity of the data, precision of effect estimates and risk of publication bias.

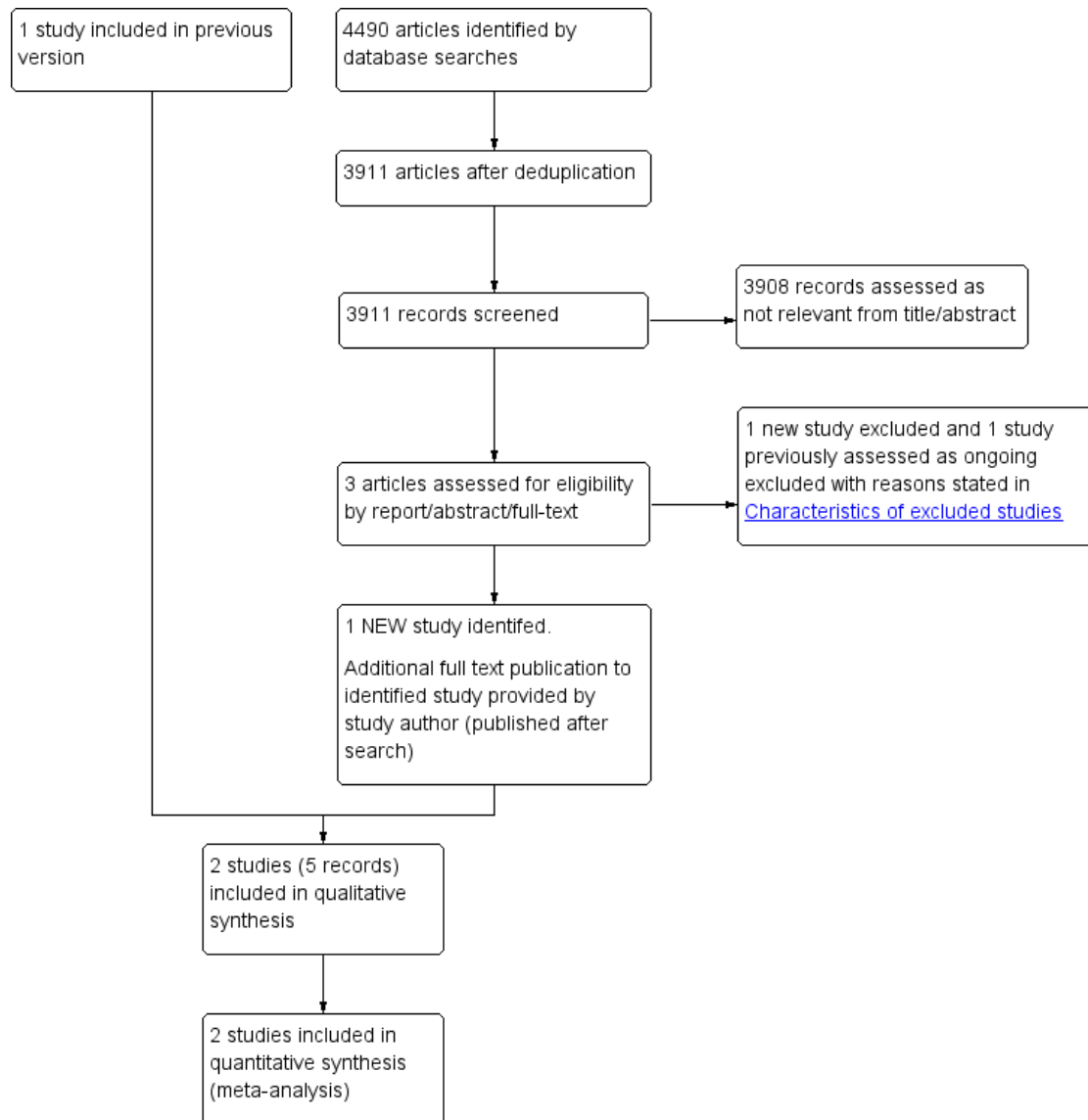
RESULTS

Description of studies

Results of the search

In this 2018 update of the review we identified one new study which met the inclusion criteria ([Peacock 2018](#)), and excluded two new studies ([den Exter 2016](#); [HOME Study](#)). The [HOME Study](#) was listed as an ongoing study in the previous version of this review ([Yoo 2014](#)). See [Figure 1](#).

Figure 1. Study flow diagram.



Included studies

One new additional study met our inclusion criteria for this 2018 update (Peacock 2018), bringing the total number of included studies to two. Aujesky 2011 was included in the previous version and involved 339 participants; Peacock 2018 randomised 114 participants. See also [Characteristics of included studies](#).

Study design

Both trials were described by the trialists as international, open-label, randomised, non-inferiority trials (Aujesky 2011; Peacock 2018). They evaluated a period of three months. The studies differed both in terms of site of care and pharmacotherapy.

Types of interventions

[Aujesky 2011](#) compared outpatient treatment (171 participants) versus inpatient treatment (168 participants) of acute PE.

Participants assigned to outpatient treatment received subcutaneous enoxaparin 1 mg/kg twice daily and were to be discharged from the emergency department (ED) within 24 hours of randomisation. If self injection was not possible, a study nurse either taught a caregiver to inject the enoxaparin or arranged administration by a visiting nurse. Participants assigned to receive inpatient treatment were admitted to hospital and received the same enoxaparin regimen. All participants received vitamin K antagonist therapy.

In [Peacock 2018](#), the outpatient group (51 participants) was discharged home from the ED no later than 12 to 24 hours after triage. They received 15 mg oral rivaroxaban twice daily for the first 21 days, followed by 20 mg oral rivaroxaban once daily for approximately 69 days, for a total treatment duration of 90 days. The inpatient comparison group (63 participants) received local standard-of-care, according to local protocol and defined by the medical team caring for the participant, which typically involved intravenous UFH or subcutaneous LMWH and hospitalisation, but also included any of the NOACs. Seventy-five per cent of all patients were initially treated with unfractionated or LMWH but ultimately received NOACs, most commonly rivaroxaban (51%) or apixaban (25%).

Types of outcomes measured

[Aujesky 2011](#) considered the primary outcome of 'recurrence of symptomatic venous thromboembolism' measured by helical CT or new perfusion defect involving 75% or more of a lung segment by lung scan; or pulmonary angiography; or autopsy; or documentation of a new proximal DVT either by venous ultrasonography or contrast venography ([Aujesky 2011](#)).

As a safety measurement, the study assessed bleeding (evaluated at 14 and 90 days) and death. [Aujesky 2011](#) defined major bleeding as fatal bleeding, bleeding at critical sites (i.e. intracranial, intraspinal, intraocular, retroperitoneal, intra-articular, pericardial or intramuscular with compartment syndrome), or bleeding with

a reduction of haemoglobin of 20 g/L or more or resulting in transfusion of two units or more of packed red cells.

[Aujesky 2011](#) also assessed overall satisfaction 14 days after randomisation using an non-validated five-point Likert scale questionnaire.

[Peacock 2018](#) evaluated the primary outcomes of duration of initial and subsequent hospitalisations for bleeding or VTE events (or both) within 30 days and 90 days of randomisation. The secondary outcomes of interest were percentage of participants with reoccurrence of symptomatic venous thromboembolism event (VTE), or VTE-related death (at 7, 14, 30, and 90 days), all-cause mortality and serious adverse events, percentage of participants with number of unplanned hospital visits or physician office for VTE symptoms and/or bleeding (at 7, 14, 30 and 90 days), minor bleeding, mean combined duration of initial and subsequent ED hospitalisation for any reason up to 30 and 90 days. Patient satisfaction was evaluated at day seven, using five-point and three-point Likert scales, with higher scores indicating greater satisfaction. Satisfaction was further evaluated on day 90 with the Anti-Clot Treatment Score, which uses two subscales of burdens (12 items) and benefits (three items), both measured on a five-point Likert scale, with higher scores indicating greater satisfaction.

Excluded studies

We excluded four published studies from the review: [Kovacs 2003](#) was a randomised controlled clinical trial that evaluated different doses of warfarin in outpatients; [Zondag 2011](#) was classified as cohort study; [Otero 2010](#) evaluated three to five days in the hospital as outpatients; and [den Exter 2016](#) randomised patients to either outpatient treatment or to management according to N-terminal pro-brain natriuretic peptide (NT-pro BNP) levels. We also excluded a study previously listed as an ongoing study, in which patients were randomised to either Hestia or PESI management ([HOME Study](#)). See [Characteristics of excluded studies](#).

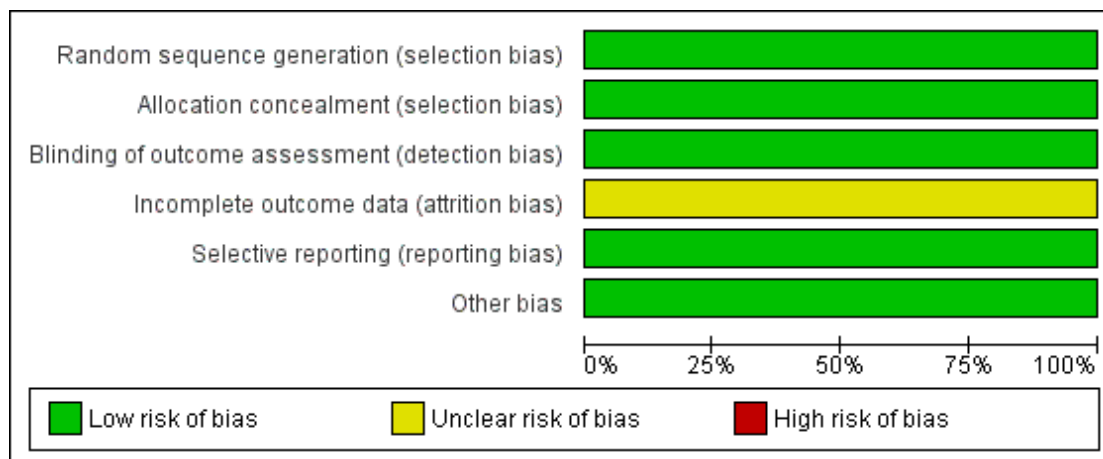
Risk of bias in included studies

See [Figure 2](#) and [Figure 3](#).

Figure 2. Risk of bias summary: review authors' judgments about each risk of bias item for each included study.

	Random sequence generation (selection bias)	Allocation concealment (selection bias)	Blinding of outcome assessment (detection bias)	Incomplete outcome data (attrition bias)	Selective reporting (reporting bias)	Other bias
Aujesky 2011						
Peacock 2018						

Figure 3. Risk of bias graph: review authors' judgments about each risk of bias item presented as percentages across all included studies.



Allocation

We classified [Aujesky 2011](#) as having low risk of selection bias as it used a computer programme to generate the allocation to treatment groups using randomised block design. We also classified [Peacock 2018](#) as having low risk of selection bias because participants were randomly assigned in a 1:1 ratio to discharge or standard care by an interactive web system within 12 hours of diagnosis.

Blinding

Since it is not possible to blind participants and investigators for treatment allocation for this particular clinical question we did not consider performance bias as part of the 'Risk of bias' assessment. In [Aujesky 2011](#), data analysers were unmasked to treatment group assignment. However, there was a committee unaware of treatment assignment which confirmed all outcomes and classified the cause of all deaths as caused (or not) by PE, major bleeding, or due to another cause. Therefore, we judged the study to be of low risk of detection bias.

In [Peacock 2018](#), analysers were masked to treatment group assignment, and so we considered the study to have a low risk of bias.

Incomplete outcome data

Although both studies reported less than 20% of dropouts and withdrawals - two from the outpatient group and five from the inpatient group in [Aujesky 2011](#), and seven from the outpatient group and eight from the inpatient group in [Peacock 2018](#) - we classified both as having an unclear risk of attrition bias. In [Peacock](#)

[2018](#), despite seven dropouts in the early discharged group, at the end of the study, the study authors could confirm that all of these participants were alive. However, for the inpatient group they could not confirm this for two participants. In [Aujesky 2011](#), for individuals who did not complete the study, the study authors were unable to confirm how many were alive.

Selective reporting

There was no evidence of selective reporting in either of the included studies ([Aujesky 2011](#); [Peacock 2018](#)).

Other potential sources of bias

There was no evidence of other potential sources of bias in the included studies ([Aujesky 2011](#); [Peacock 2018](#)). We considered the imbalance between the two groups in [Peacock 2018](#) as different pharmacotherapy regimes were used in the arms. However, as 50% of the outpatient group received the same treatment as the inpatient group, both studies were judged as being at low risk of other bias.

Effects of interventions

See: [Summary of findings for the main comparison Outpatient compared with inpatient treatment for acute pulmonary embolism](#)

Outpatient versus inpatient treatment of acute pulmonary embolism

We identified two trials comparing outpatient (222 participants) and inpatient (231 participants) treatment of acute PE ([Aujesky](#)

2011; Peacock 2018). The studies differed both in terms of site of care and pharmacotherapy. In Aujesky 2011, both groups of participants received subcutaneous enoxaparin 1 mg/kg twice every day. In Peacock 2018, the outpatient group received rivaroxaban, and the inpatient group received standard care (treatment based on local institutional protocols, defined by the medical team caring for the participant, which typically involved bridging therapy and hospitalisation, but also included any of the NOACs). More than 75% of inpatients ultimately received some type of direct-acting oral anticoagulant, with 50.8% receiving rivaroxaban. To investigate if the difference in treatment regimes influenced the results, we have pooled the data from the studies using subgroup analysis.

Primary outcomes

Short-term all-cause mortality (from the date of randomisation to 7 to 10 days)

In Aujesky 2011, one death occurred on day 17 after the randomisation in the inpatient group (1/168), due to pneumonia and cancer, and there were no deaths in the outpatient group (0/171). No deaths occurred in Peacock 2018. There was no clear effect of intervention due to imprecision (risk ratio (RR) 0.33, 95% confidence interval (CI) 0.01 to 7.98; 451 participants; two studies; $P = 0.49$; low-quality evidence) (Analysis 1.1).

Long-term all-cause mortality (from the date of randomisation to 90 days)

In Aujesky 2011, one death occurred on day 17 after the randomisation in the inpatient group (1/168), due to pneumonia and cancer, and one death occurred on day 34 in the outpatient group (1/171), due to trauma-related aortic rupture. No deaths occurred in Peacock 2018. There was no clear effect of intervention due to imprecision (RR 0.98, 95% CI 0.06 to 15.58; 451 participants; two studies; $P = 0.99$; low-quality evidence) (Analysis 1.2).

Short-term pulmonary embolism-related mortality (from the date of randomisation to 7 to 10 days)

No short-term PE-related deaths occurred in either study (Aujesky 2011; Peacock 2018).

Long-term pulmonary embolism-related mortality (from the date of randomisation to 90 days)

No long-term PE-related deaths occurred in either study (Aujesky 2011; Peacock 2018).

Secondary outcomes

Bleeding

a. Major bleeding

In Aujesky 2011, two outpatients (2/171), and no inpatients (0/168), had major bleeding within 14 days (one of the events was an intramuscular haematoma on day three and one was by insertion of vena cava filter on day 13). Peacock 2018 reported no major bleeding by 90 days; we therefore assumed that no major bleeding had occurred by 14 days. There was no clear effect of intervention within 14 days due to imprecision (RR 4.91, 95% CI 0.24 to 101.57; 445 participants; two studies; $P = 0.30$; low-quality evidence) (Analysis 1.3).

In Aujesky 2011, three outpatients (3/171), and no inpatients (0/168), had major bleeding within 90 days. No major bleeding occurred in Peacock 2018. There was no clear effect of intervention within 90 days due to imprecision (RR 6.88, 95% CI 0.36 to 132.14; 445 participants; two studies; $P = 0.20$; low-quality evidence) (Analysis 1.4).

b. Minor bleeding

Aujesky 2011 did not report on minor bleeding. In Peacock 2018 two participants reported International Society on Thrombosis and Haemostasis (ISTH) clinically relevant non-major bleeding, one from each randomisation group, which we considered as being minor bleeding. There was no clear effect of intervention due to imprecision (RR 1.08, 95% CI 0.07 to 16.79; 106 participants; one study; $P = 0.96$, low-quality evidence) (Analysis 1.5).

Adverse effects such as haemodynamic instability

The trials did not report on adverse effects such as haemodynamic instability.

Recurrence of pulmonary embolism

In Aujesky 2011, one outpatient (1/171), and no inpatients (0/168), had a recurrent PE within 90 days (long term). There were no cases of recurrence of pulmonary embolism in Peacock 2018. There was no clear difference between the treatment groups (RR 2.95, 95% CI 0.12 to 71.85; 445 participants; two studies; $P = 0.51$; low-quality evidence) (Analysis 1.6). There were no events in either group regarding the short-term recurrence of PE (within 14 days analysis).

Patient satisfaction or compliance, or both

In [Aujesky 2011](#), 156 of 170 outpatients (92%) and 158 of 167 inpatients (95%) were very satisfied or satisfied with the medical care received. In [Peacock 2018](#), 29 of 48 outpatients (60%) and 37 of 59 inpatients (63%) were very satisfied with assignment to intervention or control group. There was no clear evidence to support a difference between the two interventions regarding patient satisfaction (RR 0.97, 95% CI 0.90 to 1.04, 444 participants; two studies; $P = 0.97$). The quality of evidence was downgraded to moderate because the effect of missing data and the absence of publication bias could not be verified. The trials did not report on compliance.

Other analyses

Due to a lack of included studies, we were unable to perform sensitivity analyses and an analysis for publication bias. We had intended to carry out subgroup analyses as described in [Subgroup analysis and investigation of heterogeneity](#). These were also limited by the number of studies included, however, where possible, we performed subgroup analysis according to treatment regimens. For the majority of the outcomes we were unable to check for subgroup differences due to there being zero events in one or more studies. Where data were sufficient, no subgroup differences were seen in the satisfaction levels between treatment regimens ($P = 0.97$, [Analysis 1.7](#)).

DISCUSSION

Although non-vitamin K antagonist oral anticoagulants (NOACs) have gained approval for the management of venous thromboembolism (VTE), the effect of this on site-of-care decision making has not yet been fully evaluated for outpatient management of PE ([Vinson 2018](#)), with early research suggesting little impact ([Kline 2016](#); [Stein 2016](#)). However, the advent of subcutaneous low molecular weight heparins (LMWH), fondaparinux and NOACs has rendered the possibility of expanding the traditional in-hospital treatment of acute pulmonary embolism (PE) to early discharge or complete treatment in the outpatient setting ([Kearon 2016](#)). Regardless, the magnitude of patients with acute PE receiving outpatient treatment is still low in most industrialised countries ([Roy 2017](#)).

The potential benefits of home treatment of PE over traditional hospital treatment include several factors: reduction of hospitalisations, substantial cost saving, improvement in health-related quality of life ([Dasta 2015](#); [Fanikos 2013](#)), and increased physical activity and social functioning. Nevertheless, one of the challenges is how to identify patients considered as being at low risk of mortality that can benefit from home management. For many years, the lack of prognostic criteria to identify patients with a low risk of

mortality could not allow safe home management ([Vinson 2012](#); [Zondag 2012](#)).

In the Computerized Registry of Patients with Venous Thromboembolism (RIETE registry), fatal PE occurred in 12% of patients presenting with massive PE and in 3% of patients with non-massive PE ([Laporte 2008](#)). Therefore, most patients with acute non-massive PE at presentation have better prognosis and, as in patients with DVT, it is possible that treatment in a substantial proportion of these individuals can be safely managed completely, or at least partially (early discharge), at home ([Othieno 2018](#); [Segal 2007](#)). Although not based on high-quality evidence, two retrospective cohort studies, [Erkens 2010](#) and [Kovacs 2010](#), showed that at least 50% of patients presenting with symptomatic PE can be treated safely as outpatients.

The treatment of acute PE in the outpatient setting, for carefully selected patients, has been allowed and studied in Europe and Canada more than in the US. In some hospitals in Canada, about 50% of people with acute PE are managed entirely as outpatients ([Baglin 2010](#); [Kovacs 2010](#)). Conversely, based on the report of the Multicenter Emergency Medicine Pulmonary Embolism in the Real World Registry (EMPEROR) ([Pollack 2011](#)), in the US only 1.1% of people attending the emergency department were discharged home without hospitalisation. Several factors might be related to this geographic discrepancy, such as issues of health insurance compensation and malpractice litigation ([Vinson 2012](#)).

The 2014 European Society of Cardiology (ESC) guidelines suggested considering early discharge and outpatient management for patients judged as low-risk PE ([Konstantinides 2014](#)). Nevertheless, due to insufficient evidence there is no clear recommendation of appropriate criteria between Pulmonary Embolism Severity Index (PESI) and Hestia for safe setting of treatment.

The 2018 guideline from the British Thoracic Society ([Howard 2018](#)) recommended that patients with confirmed PE should be risk-stratified using a validated clinical risk score. Patients in PESI class I/II, sPESI class 0, or those meeting the Hestia criteria should be considered for outpatient management of PE.

Two recently published prospective studies in the US, which used the PESI to identify patients eligible for outpatient management, have shown outpatient management to be safe and effective in treatment of PE in selected low-risk patients with PE ([Bledsoe 2018](#); [Vinson 2018](#)). [Vinson 2018](#) employed a more flexible use of the prediction score in which the PESI class was not strictly tied to a site-of-care disposition. Rather, the risk class was used to inform clinical judgement, not direct it. This more flexible use of the PESI is endorsed by the American College of Chest Physicians in their recent PE guideline ([Kearon 2016](#)).

In this 2018 Cochrane Review, we included only two randomised controlled trials that compared outpatient management with inpatient management of acute PE ([Aujesky 2011](#); [Peacock 2018](#)).

Aujesky 2011 used the PESI, a validated risk-stratification instrument, to select low-risk patients who were eligible for outpatient treatment. These results suggest feasible perspective on the safety of PE management in an outpatient setting. Peacock 2018 reported preliminary results using the Hestia criteria to select low-risk PE patients who can be safely and effectively managed as outpatients with rivaroxaban. The results between outpatient versus inpatient groups were similar for mortality, thromboembolic events and haemorrhagic complications were very low and not different between groups. No clear differences were detected between the outpatient and inpatient groups for the outcomes of mortality, bleeding, recurrent PE and patient satisfaction. Seemingly both methods for selection of low-risk PE patients selection (PESI and Hestia) can be applied with acceptable outcomes. However, a scientific comparison of the two methods in which patients were randomised to either PESI or Hestia criteria is currently ongoing (HOME Study).

Further large, randomised studies are required to provide information on the selection of low-risk PE patients for outpatient management. It is currently unclear whether the PESI or the Hestia criteria is more accurate to identify suitable outpatients, whether troponin levels have to be considered for safe selection of these patients, or whether imaging such as echocardiogram and compression ultrasonography of the leg veins are also necessary.

Summary of main results

This review examined the safety and efficacy of outpatient versus inpatient treatment in low-risk patients with acute PE. We included two RCTs, with 451 participants, that reported our primary outcomes. In Aujesky 2011, inpatients and outpatients were treated with same treatment regimens (enoxaparin 1 mg/kg twice daily); and in Peacock 2018, inpatients and outpatients were treated with different treatment regimens (rivaroxaban 15 mg versus local standard-of-care). No deaths occurred in Peacock 2018, and two deaths occurred in Aujesky 2011, one in each group. For short- and long-term mortality, major and minor bleeding, and recurrent PE there was no clear effect of intervention; there was imprecision in the results (the numbers of events were very small, the confidence intervals were wide and included treatment effects in both directions, and the quality of the evidence was low). See [Summary of findings for the main comparison](#). There was no clear evidence to support a difference between the two interventions regarding patient satisfaction: 92% and 60% of outpatients, and 95% and 63% of inpatients, were very satisfied or satisfied with the medical care received (Aujesky 2011 and Peacock 2018, respectively). Adverse effects such as haemodynamic instability and compliance were not assessed by the included studies

Overall completeness and applicability of evidence

Because of our comprehensive search strategy and contact with experts in the field, we are confident that we have identified all RCTs and quasi-RCTs comparing outpatient versus inpatient treatment for acute PE. This review addresses the non-inferiority hypothesis that outpatient treatment presents the same benefits as inpatient treatment for acute PE. Home treatment can improve health-related quality of life, reduce hospitalisation rates and costs, although home treatment will incur some health service costs. A key point from this clinical question is to appropriately select people who are at low risk to avoid unnecessary risks. More studies are needed to assess the accuracy of the PESI for identifying a population of low-risk patients who can be safely and effectively treated without hospitalisation. The PESI, as used by Aujesky 2011, consists of 11 routinely available clinical parameters based on signs and symptoms, and stratifies patients into five risk classes (I to V) with increasing risk of short-term mortality (Appendix 2). The validation study of PESI performed by Aujesky 2007 identified low-risk patients who are potential candidates for outpatient treatment, with very low rates of 90-day all-cause mortality (1% or less). Peacock 2018 used the Hestia criteria (see Appendix 4), which consist of 11 practical clinical exclusion rules to select patients for outpatient treatment. The Hestia criteria were later validated in 550 patients by combining the cutoff NT-proBNP levels for outpatient treatment as 500 ng/L (den Exter 2016b). Although in Peacock 2018, the inpatients and outpatients had different treatment regimens, local standard-of-care also involved rivaroxaban. Regardless of the different treatment regimes between groups, there was no difference in results. Neither study reported on all our predefined outcomes, such as haemodynamic instability, and compliance. We excluded one RCT from this review because it used a different definition for outpatients (early discharge was considered as discharge after three or five days of admission (Otero 2010), compared with less than 36 hours (Aujesky 2011; Peacock 2018). In addition, Otero 2010 used a non-validated clinical prognostic model to identify low-risk patients.

Quality of the evidence

The overall quality of the evidence for the primary outcomes of short- and long-term mortality was low ([Summary of findings for the main comparison](#)). We downgraded our assessments of the quality of evidence due to the small number of participants and events, and imprecision. In addition, we were unable to discount publication bias (Guyatt 2008). It is therefore difficult to draw robust conclusions on the basis of the available evidence.

Potential biases in the review process

One area of potential bias in this review is the weakness of statistical power because of the lack of included studies. Although we performed a well-designed search strategy to identify all potential studies, we found only two RCTs that met the eligibility criteria, which makes our findings uncertain.

In the [Peacock 2018](#) trial the outpatient group received rivaroxaban, and the inpatient group received standard of care (treatment based on local institutional protocols, which may include an admission, a parenteral anticoagulant and an oral vitamin K antagonist, or any of the NOACs). This is different from [Aujesky 2011](#), which had similar pharmacological treatments in the inpatient and outpatient treatment arms. We decided to include [Peacock 2018](#) because in the inpatient group 50.8% of patients received rivaroxaban, and the results of the primary outcomes of [Aujesky 2011](#) and [Peacock 2018](#) were quite similar (low number of events). We recognise the importance and methodologic rigor of [Aujesky 2011](#), however, the trial by Peacock and colleagues appears to be more pragmatic, therefore we considered it important to include [Peacock 2018](#) and to pool the data. In order to highlight any potential differences, we performed a subgroup analysis (inpatients and outpatients with same treatment regimens versus inpatients and outpatients treated with different treatment regimens). [Peacock 2018](#) used the Hestia criteria to classify patients, and we therefore considered that most patients were symptomatic.

Agreements and disagreements with other studies or reviews

We found one systematic review that selected observational studies, including prospective cohort studies that described the outcome of people with PE treated entirely as outpatients ([Vinson 2012](#)). The review examined the results of exclusive ambulatory management for people with acute symptomatic PE. However, the authors only considered an observational period of less than 24 hours, that is, the review did not consider inpatient stay followed by early discharge. The review also indicated that both treatments had similar effectiveness. Hence, [Vinson 2012](#) recommended that patients with low risk of adverse clinical outcomes (e.g. mortality, recurrence and bleeding) are treated at home due to the advantages of low cost, avoidance of hospital infections, and high levels of patient satisfaction ([Vinson 2012](#)).

Squizzato and colleagues also conducted a systematic review that evaluated the effects of outpatient treatment for PE ([Squizzato 2009](#)). All of the included studies were observational studies and the authors concluded that patients might be safely treated at home. The authors recommended further studies to confirm or refute these findings.

Three systematic reviews included observational studies and RCTs (including [Aujesky 2011](#) and [Otero 2010](#), which are included

and excluded in this review respectively). The reviews evaluated whether outpatient treatment and early discharge were as safe as conventional inpatient treatment in people with acute PE ([Piran 2012](#); [Piran 2013](#); [Zondag 2012](#)). Although heterogeneous criteria were used for the selection of participants, the results showed that in a carefully selected group classified as low-risk patients, both treatments presented similar safety; this is in agreement with the conclusions of this systematic review.

AUTHORS' CONCLUSIONS

Implications for practice

This review included two published randomised controlled trials comparing outpatient and inpatient treatment for low-risk patients with acute pulmonary embolism. The evidence was of low quality, and did not show any difference between the treatment groups in overall mortality, bleeding and recurrence of pulmonary embolism. Further well-conducted research is required before informed practice decisions can be made.

Implications for research

This review highlights the need for further research into the appropriate setting of treatment for acute pulmonary embolism. Future trials need to be adequately powered and should have standardised outcome measures, such as mortality, hospitalisation rates, health-related quality of life, and costs.

ACKNOWLEDGEMENTS

We express our gratitude to Regina El Dib and Thais Queluz for their important contribution to the first version of this review. We would like to thank the Cochrane Vascular editorial base and editors for their help and input during the preparation of this review.

We thank the following peer reviewers for their input.

David R Vinson, Senior Physician, The Permanente Medical Group, Adjunct Investigator, Kaiser Permanente Division of Research, and Co-chair CREST Network, Oakland, California, USA.

Alessandro Squizzato, Research Center on Thromboembolic Disorders and Antithrombotic Therapies, University of Insubria, Varese, Italy.

Matteo Di Minno, Department of Translational Medical Sciences, Federico II University, Naples, Italy.

REFERENCES

References to studies included in this review

Aujesky 2011 *{published data only}*

Aujesky D, Roy PM, Verschuren F, Righini M, Osterwalder J, Egloff M, et al. An international, randomized non-inferiority trial of outpatient versus inpatient treatment for pulmonary embolism. *Journal of General Internal Medicine* 2011;**26**(10):1220.

* Aujesky D, Roy PM, Verschuren F, Righini M, Osterwalder J, Egloff M, et al. Outpatient versus inpatient treatment for patients with acute pulmonary embolism: an international, open-label, randomised, non-inferiority trial. *Lancet* 2011;**378**(9785):41–8.

Peacock 2018 *{published data only}*

NCT02584660. A study of rivaroxaban for early discharge of low risk pulmonary embolism from the emergency department (MERCURY PE). clinicaltrials.gov/ct2/show/NCT02584660 (first posted 22 October 2015).

* Peacock WF, Coleman CI, Diercks DB, Francis S, Kabrhel C, Keay C, et al. Emergency department discharge of pulmonary embolus patients. *Academic Emergency Medicine* 2018; Vol. 25, issue 9:995–1003.
Singer AJ, Xiang J, Kabrhel C, Merli GJ, Pollack C, Tapson VF, et al. MultiCenter trial of Rivaroxaban for early discharge of pulmonary embolism from the Emergency Department (MERCURY PE): rationale and design. *Academic Emergency Medicine* 2016;**23**(11):1280–6.

References to studies excluded from this review

den Exter 2016 *{published data only}*

den Exter PL, Zondag W, Klok FA, Brouwer RE, Dolsma J, Eijsvogel M, et al. Efficacy and safety of outpatient treatment based on the Hestia clinical decision rule with or without N-terminal pro-brain natriuretic peptide testing in patients with acute pulmonary embolism. *American Journal of Respiratory and Critical Care Medicine* 2016;**194**(8):998–1006.

HOME Study *{published data only}*

Roy PM, Gable B. Hospitalization or Out-treatment Management of Patients with Pulmonary Embolism: a randomized controlled trial (HOME-PE). clinicaltrials.gov/ct2/show/NCT02811237 (first posted 23 June 2016).

Kovacs 2003 *{published data only}*

Kovacs MJ, Rodger M, Anderson DR, Morrow B, Kells G, Kovacs J, et al. Comparison of 10-mg and 5-mg warfarin initiation nomograms together with low-molecular-weight heparin for outpatient treatment of acute venous thromboembolism. A randomized, double-blind, controlled trial. *Annals of Internal Medicine* 2003;**138**(9):714–9.

Otero 2010 *{published data only}*

Otero R, Uresandi F, Jiménez D, Cabezedo MA, Oribe M, Nauffal D, et al. Home treatment in pulmonary embolism. *Thrombosis Research* 2010;**126**(1):e1–5.

Zondag 2011 *{published data only}*

Zondag W, Mos IC, Creemers-Schild D, Hoogerbrugge AD, Dekkers OM, Dolsma J, et al. Outpatient treatment in patients with acute pulmonary embolism: the Hestia Study. *Journal of Thrombosis and Haemostasis* 2011;**9**(8):1500–7.

Additional references

Agterof 2010

Agterof MJ, Schutgens RE, Snijder RJ, Epping G, Peltenburg HG, Posthuma EF, et al. Out of hospital treatment of acute pulmonary embolism in patients with a low NT-proBNP level. *Journal of Thrombosis and Haemostasis* 2010;**8**(6):1235–41.

Aujesky 2005

Aujesky D, Obrosky DS, Stone RA, Auble TE, Perrier A, Cornuz J, et al. Derivation and validation of a prognostic model for pulmonary embolism. *American Journal of Respiratory and Critical Care Medicine* 2005;**172**(8):1041–6.

Aujesky 2007

Aujesky D, Perrier A, Roy PM, Stone RA, Cornuz J, Meyer G, et al. Validation of a clinical prognostic model to identify low-risk patients with pulmonary embolism. *Journal of Internal Medicine* 2007;**261**(6):597–604.

Baglin 2010

Baglin T. Fifty per cent of patients with pulmonary embolism can be treated as outpatients. *Journal of Thrombosis and Haemostasis* 2010;**8**(11):2404–5.

Bledsoe 2018

Bledsoe J, Woller S, Stevens S, Aston V, Patten R, et al. Management of low-risk pulmonary embolism (LoPE) patients without hospitalization: the LoPE prospective management study. *Chest* 2018;**154**(2):249–56.

Buller 2003

Buller HR, Davidson BL, Decousus H, Gallus A, Gent M, Piovella F, et al. Subcutaneous fondaparinux versus intravenous unfractionated heparin in the initial treatment of pulmonary embolism. *New England Journal of Medicine* 2003;**349**(18):1695–702.

Cohen 2007

Cohen AT, Agnelli G, Anderson FA, Arcelus JJ, Bergqvist D, Brecht JG, et al. Venous thromboembolism (VTE) in Europe. The number of VTE events and associated morbidity and mortality. *Thrombosis and Haemostasis* 2007;**98**(4):756–64.

Dasta 2015

Dasta JF, Pilon D, Mody SH, Lopatto K, Laliberté G, Germain G, et al. Daily hospitalization costs in patients with deep vein thrombosis or pulmonary embolism treated with anticoagulant therapy. *Thrombosis Research* 2015;**135**(2):303–10.

Deeks 2011

Deeks JJ, Higgins JPT, Altman DG. Chapter 9: Analysing data and undertaking meta-analyses. In: Higgins JP,

- Green S, editor(s). Cochrane Handbook for Systematic Reviews of Interventions Version 5.1.0 (updated March 2011). The Cochrane Collaboration, 2011. Available from handbook.cochrane.org.
- den Exter 2016b**
den Exter PL, Zondag W, Klok FA, Brouwer RE, Dolsma J, Eijsvogel M, et al. Efficacy and safety of outpatient treatment based on the Hestia clinical decision rule with or without N-terminal pro-brain natriuretic peptide testing in patients with acute pulmonary embolism. *American Journal of Respiratory and Critical Care Medicine* 2016;**194**(8):998–1006.
- Erkens 2010**
Erkens PMG, Gandara, Wells P, Shen AYH, Bose G, Le Gal G, et al. Safety of outpatient treatment in acute pulmonary embolism. *Journal of Thrombosis and Haemostasis* 2010;**8**:2412–7.
- Fanikos 2013**
Fanikos J, Rao A, Seger AC, Carter D, Piazza G, Goldhaber SZ. Hospital costs of acute pulmonary embolism. *American Journal of Medicine* 2013;**126**(2):127–32.
- Ghazvinian 2018**
Ghazvinian R, Gottsäter A, Elf JL. Efficacy and safety of outpatient treatment with direct oral anticoagulation in pulmonary embolism. *Journal of Thrombosis and Thrombolysis* 2018;**45**:319–24.
- Goldhaber 1999**
Goldhaber SZ, Visani L, De Rosa M. Acute pulmonary embolism: clinical outcomes in the International Cooperative Pulmonary Embolism Registry (ICOPER). *Lancet* 1999;**353**(9162):1386–9.
- GRADEpro GDT 2015 [Computer program]**
McMaster University (developed by Evidence Prime). GRADEpro GDT. Version accessed 1 November 2018. Hamilton (ON): McMaster University (developed by Evidence Prime), 2015.
- Guyatt 2008**
Guyatt GH, Oxman AD, Kunz R, Vist GE, Falck-Ytter Y, Schunemann HJ. What is “quality of evidence” and why is it important to clinicians?. *BMJ* 2008;**336**:995–8.
- Heit 2005**
Heit JA, Cohen AT, Anderson FA. VTE Impact Assessment Study Group. Estimated annual number of incident and recurrent, non-fatal and fatal venous thromboembolism (VTE) events in the U.S. *Blood* 2005;**106**(11):267a.
- Higgins 2011**
Higgins JB, Altman DG, Sterne JAC. Chapter 8: Assessing risk of bias in included studies. In: Higgins JP, Green S, editor(s). Cochrane Handbook for Systematic Reviews of Interventions Version 5.1.0 (updated March 2011). The Cochrane Collaboration, 2011. Available from handbook.cochrane.org.
- Howard 2018**
Howard LSGE, Barden S, Condliffe R, Connolly V, Davies CWH, Donaldson J, et al. British Thoracic Society Guideline for the initial outpatient management of pulmonary embolism (PE). *Thorax* 2018;**73**:ii1-ii29. doi: 10.1136/thoraxjnl-2018-211539.
- Ibrahim 2008**
Ibrahim SA, Stone RA, Obrosky DS, Geng M, Fine MJ, Aujesky D. Thrombolytic therapy and mortality in patients with acute pulmonary embolism. *Archives of Internal Medicine* 2008;**168**(20):2183–90.
- Jiménez 2007**
Jiménez D, Yusen RD, Otero R, Uresandi F, Nauffal D, Laserna E, et al. Prognostic models for selecting patients with acute pulmonary embolism for initial outpatient therapy. *Chest* 2007;**132**(1):24–30.
- Jiménez 2010**
Jimenez D, Aujesky D, Moores L, Gomez V, Lobo JL, et al. Simplification of the Pulmonary Embolism Severity Index for prognostication in patients with acute symptomatic pulmonary embolism. *Archives of Internal Medicine* 2010;**170**(15):1383–9.
- Jiménez 2016**
Jiménez D, Miguel-Diez J, Guijarro R, Trujillo-Santos J, Otero R, Barba R, et al. Trends in the management and outcomes of acute pulmonary embolism: analysis from the RIETE registry. *Journal of the American College of Cardiology* 2016;**67**(2):162–170.
- Kearon 2008**
Kearon C, Kahn SR, Agnelli G, Goldhaber S, Raskob GE, Comerota AJ, American College of Chest Physicians. Antithrombotic therapy for venous thromboembolic disease: American College of Chest Physicians Evidence-Based Clinical Practice Guidelines (8th Edition). *Chest* 2008;**133**(6 Suppl):454S–545S.
- Kearon 2012**
Kearon C, Akl EA, Comerota AJ, Prandoni P, Bounameaux H, Goldhaber SZ, et al. Antithrombotic therapy for VTE disease. Antithrombotic therapy and prevention of thrombosis, 9th ed: American College of Chest Physicians Evidence-Based Clinical Practice Guideline. *Chest* 2012;**141**(2 Suppl):e419S–94S.
- Kearon 2016**
Kearon C, Akl EA, Ornelas J, Blaivas A, Jimenez D, Bounameaux H, et al. Antithrombotic therapy for VTE disease and expert panel report (10th edition). *Chest* 2016;**149**(2):315–52.
- Kline 2016**
Kline JA, Kahler JP, Beam DM. Outpatient treatment of low-risk venous thromboembolism with monotherapy oral anticoagulation: patient quality of life outcomes and clinician acceptance. *Patient Preference and Adherence* 2016;**10**:561–9.
- Konstantinides 2014**
Konstantinides S, Torbicki A, Agnelli G, Danchin N, Fitzmaurice D, Galiè N, et al. 2014 ESC Guidelines on the diagnosis and management of acute pulmonary embolism. *European Heart Journal* 2014;**35**(43):3033–73. DOI: 10.1093/eurheartj/ehu283

- Kovacs 2010**
Kovacs MJ, Hawel JD, Rekman JF, Lazo-Langner A. Ambulatory management of pulmonary embolism: a pragmatic evaluation. *Journal of Thrombosis and Haemostasis* 2010;**8**(11):2406–11.
- Lankeit 2011**
Lankeit M, Jiménez D, Kostrubiec M, Dellas C, Hasenfuss G, Pruszczyk P, et al. Predictive value of the high-sensitivity troponin T assay and the simplified Pulmonary Embolism Severity Index in hemodynamically stable patients with acute pulmonary embolism: a prospective validation study. *Circulation* 2011;**124**(24):2716–24.
- Laporte 2008**
Laporte S, Mismetti P, Décousus H, Uresandi F, Otero R, Lobo JL, et al. Clinical predictors for fatal pulmonary embolism in 15,520 patients with venous thromboembolism: findings from the Registro Informatizado de la Enfermedad TromboEmbolica venosa (RIETE) Registry. *Circulation* 2008;**117**(13):1711–6.
- Lefebvre 2011**
Lefebvre C, Manheimer E, Glanville J. Chapter 6: Searching for studies. In: Higgins JP, Green S, editor(s). *Cochrane Handbook for Systematic Reviews of Interventions* Version 5.1.0 (updated March 2011). The Cochrane Collaboration. Available from handbook.cochrane.org 2011.
- Newell 1992**
Newell DJ. Intention-to-treat analysis: implications for quantitative and qualitative research. *International Journal of Epidemiology* 1992;**21**(5):837–41.
- Othieno 2018**
Othieno R, Okpo E, Forster R. Home versus in-patient treatment for deep vein thrombosis. *Cochrane Database of Systematic Reviews* 2018, Issue 1. DOI: 10.1002/14651858.CD003076.pub3
- Piran 2012**
Piran S, Gal GL, Wells P, Righini M, Carrier M. Outpatient treatment of symptomatic pulmonary embolism: a systematic review and meta-analysis. *Blood (ASH Annual Meeting Abstracts)* 2012;**120**:361.
- Piran 2013**
Piran S, Le Gal G, Wells PS, Gandara E, Righini M, Rodger MA, et al. Outpatient treatment of symptomatic pulmonary embolism: a systematic review and meta-analysis. *Thrombosis Research* 2013;**132**(5):515–9.
- Pollack 2011**
Pollack CV, Schreiber D, Goldhaber SZ, Slattery D, Fanikos J, O'Neil BJ, et al. Clinical characteristics, management, and outcomes of patients diagnosed with acute pulmonary embolism in the emergency department: initial report of EMPEROR (Multicenter Emergency Medicine Pulmonary Embolism in the Real World Registry). *Journal of the American College of Cardiology* 2011;**57**(6):700–6.
- Quinlan 2004**
Quinlan DJ, McQuillan A, Eikelboom JW. Low-molecular weight heparin compared with intravenous unfractionated heparin for treatment of pulmonary embolism: a meta-analysis of randomized, controlled trials. *Annals of Internal Medicine* 2004;**140**(3):175–83.
- Review Manager 2014 [Computer program]**
The Nordic Cochrane Centre, The Cochrane Collaboration. Review Manager (RevMan). Version 5.3. Copenhagen: The Nordic Cochrane Centre, The Cochrane Collaboration, 2014.
- Roy 2017**
Roy PM, Mounneh T, Penaloza A, Sanchez. Outpatient management of pulmonary embolism. *Thrombosis Research* 2017;**157**:92–100.
- Schulman 2005**
Schulman S, Kearon C. Definition of major bleeding in clinical investigations of antihemostatic medicinal products in non-surgical patients. *Journal of Thrombosis and Haemostasis*. 2005;**3**(4):692–4.
- Segal 2007**
Segal JB, Streiff MB, Hofmann LV, Thornton K, Bass EB. Management of venous thromboembolism: a systematic review for a practice. *Annals of Internal Medicine* 2007;**146**(3):211–22.
- Squizzato 2009**
Squizzato A, Galli M, Dentali F, Ageno W. Outpatient treatment and early discharge of symptomatic pulmonary embolism: a systematic review. *European Respiratory Journal* 2009;**33**(5):1148–55.
- Stein 2016**
Stein PD, Matta F, Hughes PG, Hourmouzis ZN, Hourmouzis NP, White RM, et al. Home treatment of pulmonary embolism in the era of novel oral anticoagulants. *American Journal of Medicine* 2016;**129**:974–7.
- Vinson 2012**
Vinson DR, Zehtabchi S, Yealy DM. Can selected patients with newly diagnosed pulmonary embolism be safely treated without hospitalization? A systematic review. *Annals of Emergency Medicine* 2012;**60**(5):651–62.
- Vinson 2018**
Vinson DR, Mark DG, Chettipally UK, Huang J, Rauchwerger AS, Reed ME, et al. Increasing safe outpatient management of emergency department patients with pulmonary embolism a controlled pragmatic trial. *Annals of Internal Medicine* 2018;**169**(12):855–65.
- Wicki 2000**
Wicki J, Perrier A, Perneger TV, Bounameaux H, Junod AF. Predicting adverse outcome in patients with acute pulmonary embolism: a risk score. *Thrombosis and Haemostasis* 2000;**84**(4):548–52.
- Zondag 2012**
Zondag W, Kooiman J, Klok F, Dekkers O, Huisman M. Outpatient versus inpatient treatment in patients with pulmonary embolism: a meta-analysis. *European Respiratory Journal* 2012;**42**(1):134–44.

Zondag 2013

Zondag W, den Exter PL, Crobach MJT, Dolsma A, Donker ML, et al. Comparison of two methods for selection of out of hospital treatment in patients with acute pulmonary embolism. *Thrombosis and Haemostasis* 2013;**109**:47–52.

References to other published versions of this review**Yoo 2012**

Yoo HHB, Queluz THAT, El Dib RP. Outpatient versus

inpatient treatment for acute pulmonary embolism. *Cochrane Database of Systematic Reviews* 2012, Issue 8. DOI: 10.1002/14651858.CD010019

Yoo 2014

Yoo HHB, Queluz THAT, El Dib R. Outpatient versus inpatient treatment for acute pulmonary embolism. *Cochrane Database of Systematic Reviews* 2014, Issue 11. DOI: 10.1002/14651858.CD010019.pub2

* *Indicates the major publication for the study*

CHARACTERISTICS OF STUDIES

Characteristics of included studies [ordered by study ID]

Aujesky 2011

Methods	<p>Design: international, open-label, randomised, non-inferiority trial</p> <p>Multicentre study: 19 EDs in Switzerland, France, Belgium and the US</p> <p>Period: February 2007 to June 2010.</p> <p>Sample size: justified (160 participants per treatment group would provide 80% power to detect a non-inferiority margin of 4% using a 1-sided α of 0.05, assuming a 5% drop-out rate)</p> <p>Follow-up: 90 days after randomisation.</p>
Participants	<p>344 eligible participants randomised, but only 339 included in primary analysis; 337 completed follow-up and 317 were included in per-protocol analysis. In the outpatient group (171 participants): 84 men, 87 women, mean age 47 years; inpatient group (168 participants): 85 men, 83 women, mean age 49 years</p> <p>Inclusion criteria: aged ≥ 18 years with acute, symptomatic and objectively verified PE who were at low risk of death based on PESI (risk classes I or II)</p> <p>Exclusion criteria: arterial hypoxaemia, SBP < 100 mmHg, chest pain necessitating parenteral opioids, active bleeding, high risk of bleeding, gastrointestinal bleeding, severe renal failure, extreme obesity, history of HIT or allergy to heparins, therapeutic oral anticoagulation at the time of diagnosis of PE, pregnancy, diagnosis of PE > 23 hours before the time of screening</p>
Interventions	<p>Outpatient (172 participants): subcutaneous enoxaparin 1 mg/kg twice daily and discharged from the ED within 24 hours of randomisation. If self injection was not possible, a study nurse either taught a caregiver to give the enoxaparin or arranged administration by a visiting nurse</p> <p>Inpatient (172 participants): subcutaneous enoxaparin 1 mg/kg twice daily and admitted to hospital</p> <p>All participants also received vitamin K antagonist therapy.</p>
Outcomes	<p>Primary outcome: recurrence of symptomatic confirmed VTE defined as recurrent PE or new or recurrent DVT within 90 days of randomisation</p> <p>Secondary outcomes: overall satisfaction, major bleeding within 14 and 90 days of randomisation, all-cause mortality within 90 days</p>
Notes	<p>Diagnostic criteria for recurrent PE were a new intraluminal filling defect on spiral CT or pulmonary angiography or a new perfusion defect of a lung segment with corresponding normal ventilation by lung scan or confirmation of a new PE on autopsy.</p> <p>Diagnostic criteria for DVT were the non-compressibility of a new venous segment or a substantial increase (≥ 4 mm) in the diameter of the thrombus during full compression in a previously abnormal segment on ultrasonography, or a new intraluminal filling defect on contrast venography</p> <p>Overall satisfaction was assessed by a non-validated 5-point Likert scale questionnaire. Participants completed this questionnaire by telephone 14 days after randomisation</p> <p>Major bleeding was defined as fatal bleeding, bleeding at critical sites (i.e. intracranial, intraspinal, intraocular, retroperitoneal, intra-articular, pericardial or intramuscular with</p>

	<p>compartment syndrome), or bleeding with a reduction of haemoglobin of ≥ 20 g/L or resulting in transfusion of ≥ 2 units of packed red cells</p> <p>Authors of the study declared they received grants, honoraria, consultancy fees, and payments from the pharmaceutical industry which sponsored the study. However, both regimens (outpatient or inpatient) patients received the same treatment</p>	
Risk of bias		
Bias	Authors' judgement	Support for judgement
Random sequence generation (selection bias)	Low risk	The eligible patients were allocated to outpatient treatment or inpatient treatment groups in a one-to-one ratio with a randomised block design generated from a password protected computer web page
Allocation concealment (selection bias)	Low risk	The patients were stratified by site and using small fixed block sizes (2 or 4) Quote: "To balance recruitment in time and preclude enrolment bias, the blocks varied randomly from two to four patients"
Blinding of outcome assessment (detection bias) All outcomes	Low risk	Although the paper says that the analysers were unmasked to treatment group assignment, there was a committee unaware of treatment assignment which confirmed all outcomes Quote: "A committee of three clinical experts from the University Hospital of Lausanne (Switzerland) who were unaware of treatment assignment confirmed all outcomes and classified the cause of all deaths as definitely due to pulmonary embolism, possibly due to pulmonary embolism (e.g., sudden death without obvious cause), due to major bleeding, or due to another cause."
Incomplete outcome data (attrition bias) All outcomes	Unclear risk	< 20% in each group: outpatient group had 2 participants who did not complete follow-up and inpatient group had 5 participants who did not complete follow-up. The study authors were unable to confirm how many were alive
Selective reporting (reporting bias)	Low risk	There is no evidence of selective reporting.

Other bias	Low risk	We did not find aspects of methodology that might be influenced by vested interests and which may lead directly to a risk of bias
------------	----------	---

Peacock 2018

Methods	Design: international, open-label, randomised, parallel group, multicentre Multicentre study: 35 sites in the US. Sample size: 114. Follow-up: 90 days after randomisation.
Participants	Inclusion criteria: adult patients (age \geq 18 years) with objectively confirmed PE (with or without symptomatic DVT) who are deemed to be at low risk for recurrent VTE, major bleeding, or all-cause mortality based on Hestia criteria, and a life expectancy of at least 6 months. The authors adapted the Hestia criteria by removing the 24-hour time markers Exclusion criteria: women of child-bearing age with no use of a highly effective birth control method, patients with any Hestia criteria present, any concomitant contraindicated medications, and individuals with contraindications to anticoagulant therapy, allergies to rivaroxaban, or with barriers to treatment adherence or follow-up
Interventions	Intervention (51): outpatient treatment with rivaroxaban 15 mg orally twice daily for the first 21 days followed by 20 mg orally once daily for approximately 69 days for a total treatment duration of 90 days Comparison (63): local standard-of-care, participants received local standard-of-care according to local protocol and defined by the medical team caring for the participant, which typically involves bridging therapy and hospitalisation, but also included any of the NOACs
Outcomes	<ul style="list-style-type: none"> • Mean duration of hospitalisation expressed in hours for venous thromboembolic or bleeding events, in the 30 days after randomisation • Major bleeding based on the International Society on Thrombosis and Haemostasis (ISTH) within 90 days • Percentage of participants with new/recurrence of VTE, or VTE-related death, within 7, 14, 30, or 90 days from randomisation • Percentage of participants with number of unplanned hospital visits or physician office for VTE symptoms and/or bleeding (up to 7, 14, 30 and 90 days) • Mean combined duration of initial and subsequent ED hospitalisation for any reason (up to 30 and 90 days) • Percentage of participants satisfied using site-of-care satisfaction questionnaire (day 7) and by ACTS (day 90) • Clinically relevant non major bleeding, based on ISTH definitions • Total, all-cause mortality • Total, serious adverse events • Costs

Notes	Sponsored by a pharmaceutical industry (Janssen Pharmaceuticals, Raritan, NJ) The authors used the Hestia criteria to classify patients, therefore we considered that most patients were symptomatic	
Risk of bias		
Bias	Authors' judgement	Support for judgement
Random sequence generation (selection bias)	Low risk	They used an interactive web system. Quote: "After obtaining written informed consent, patients were randomly assigned in a 1:1 ratio to ED discharge on open-label rivaroxaban or standard care (as determined by the attending physician) by an interactive Web system within 12 hours of diagnosis."
Allocation concealment (selection bias)	Low risk	They used an interactive web system. Quote: "After obtaining written informed consent, patients were randomly assigned in a 1:1 ratio to ED discharge on open-label rivaroxaban or standard care (as determined by the attending physician) by an interactive Web system within 12 hours of diagnosis."
Blinding of outcome assessment (detection bias) All outcomes	Low risk	The analysers were masked to treatment group assignment. Quote: "Principal investigators and outcome adjudicators were masked to group assignment"
Incomplete outcome data (attrition bias) All outcomes	Unclear risk	Less than 20% of dropouts and withdrawals (7 participants in the outpatient group and 8 participants in the inpatient group), however the authors did not perform intention-to-treat analysis. All outpatients completed the study and authors could confirm that all of them were alive, however in inpatient group they could not confirm this for two patients
Selective reporting (reporting bias)	Low risk	There is no evidence of selective reporting.
Other bias	Low risk	We did not find aspects of methodology that might be been influenced by vested interests and which may lead directly to a risk of bias. However, comparison of two sites of

		<p>care (inpatient versus outpatient) was imbalanced by different pharmacotherapy between the arms: the outpatient group received 15 mg oral rivaroxaban twice daily for the first 21 days, followed by 20 mg oral rivaroxaban once daily for approximately 69 days for a total treatment duration of 90 days. The inpatient comparison group received local standard-of-care, according to local protocol and defined by the medical team caring for the participant, which typically involved intravenous UFH or subcutaneous LMWH and hospitalisation, but also included any of the NOACs (75% of all patients were initially treated with unfractionated or low-molecular-weight heparin but ultimately received NOACs, most commonly rivaroxaban (51%) or apixaban (25%))</p>
--	--	--

- ACTS: anti-clot treatment scale
- CT: computed tomography
- DVT: deep vein thrombosis
- ED: emergency department
- HIT: heparin-induced thrombocytopenia
- ISTH: International Society on Thrombosis and Haemostasis
- LMWH: low molecular weight heparin
- NOACs: non-vitamin K antagonist oral anticoagulants
- PE: pulmonary embolism
- PESI: Pulmonary Embolism Severity Index
- SBP: systolic blood pressure
- UFH: unfractionated heparin
- VTE: venous thromboembolism

Characteristics of excluded studies [ordered by study ID]

Study	Reason for exclusion
den Exter 2016	Patients were randomised to either outpatient treatment or to management based on NT-pro BNP levels, and not to either home or inpatient management
HOME Study	Patients were randomised to either Hestia or PESI management, and non-randomised to either inpatient or outpatient treatment
Kovacs 2003	RCT which evaluated different doses of warfarin in outpatients

(Continued)

Otero 2010	RCT which evaluated 3 to 5 days in the hospital as 'outpatients'
Zondag 2011	Cohort study

NT-pro BNP: N-terminal pro-brain natriuretic peptide

PESI: pulmonary embolism severity index

RCT: randomised controlled trial

DATA AND ANALYSES

Comparison 1. Outpatient versus inpatient treatment

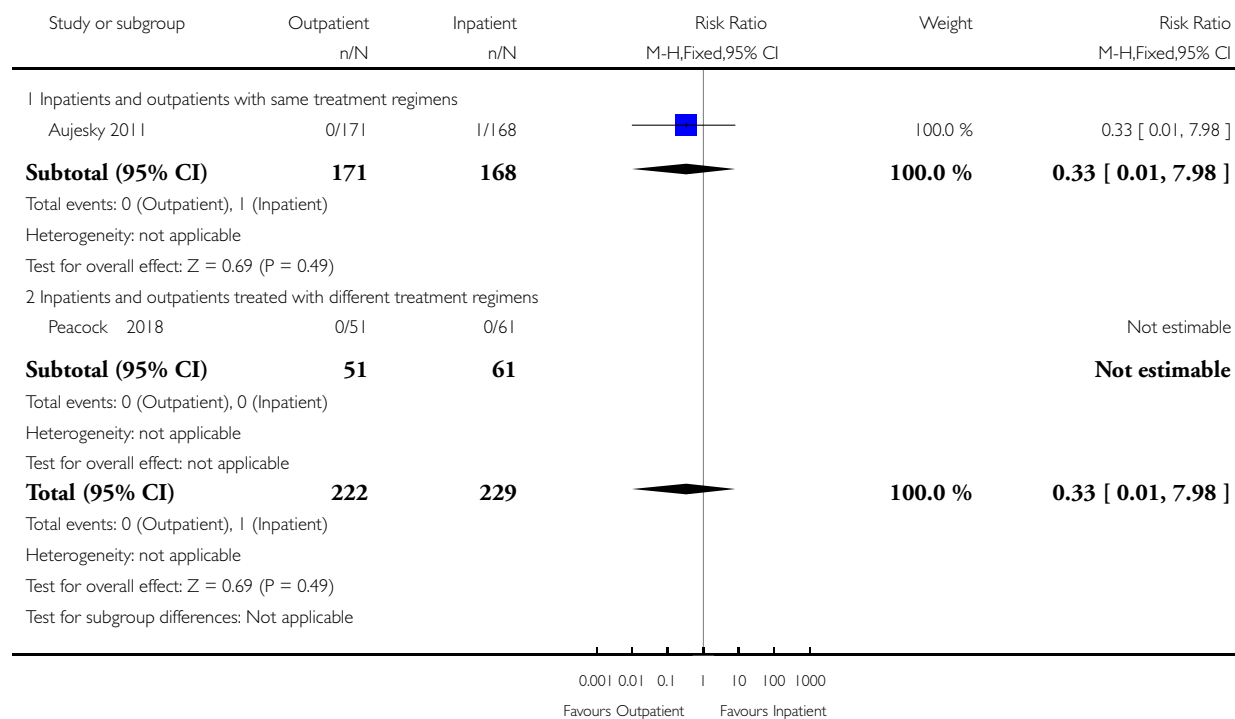
Outcome or subgroup title	No. of studies	No. of participants	Statistical method	Effect size
1 Short-term all-cause mortality	2	451	Risk Ratio (M-H, Fixed, 95% CI)	0.33 [0.01, 7.98]
1.1 Inpatients and outpatients with same treatment regimens	1	339	Risk Ratio (M-H, Fixed, 95% CI)	0.33 [0.01, 7.98]
1.2 Inpatients and outpatients treated with different treatment regimens	1	112	Risk Ratio (M-H, Fixed, 95% CI)	0.0 [0.0, 0.0]
2 Long-term all-cause mortality	2	451	Risk Ratio (M-H, Fixed, 95% CI)	0.98 [0.06, 15.58]
2.1 Inpatients and outpatients with same treatment regimens	1	339	Risk Ratio (M-H, Fixed, 95% CI)	0.98 [0.06, 15.58]
2.2 Inpatients and outpatients treated with different treatment regimens	1	112	Risk Ratio (M-H, Fixed, 95% CI)	0.0 [0.0, 0.0]
3 Major bleeding within 14 days	2	445	Risk Ratio (M-H, Fixed, 95% CI)	4.91 [0.24, 101.57]
3.1 Inpatients and outpatients with same treatment regimens	1	339	Risk Ratio (M-H, Fixed, 95% CI)	4.91 [0.24, 101.57]
3.2 Inpatients and outpatients treated with different treatment regimens	1	106	Risk Ratio (M-H, Fixed, 95% CI)	0.0 [0.0, 0.0]
4 Major bleeding within 90 days	2	445	Risk Ratio (M-H, Fixed, 95% CI)	6.88 [0.36, 132.14]
4.1 Inpatients and outpatients with same treatment regimens	1	339	Risk Ratio (M-H, Fixed, 95% CI)	6.88 [0.36, 132.14]
4.2 Inpatients and outpatients treated with different treatment regimens	1	106	Risk Ratio (M-H, Fixed, 95% CI)	0.0 [0.0, 0.0]
5 Minor bleeding	1	106	Risk Ratio (M-H, Fixed, 95% CI)	1.08 [0.07, 16.79]
6 Recurrent pulmonary embolism within 90 days	2	445	Risk Ratio (M-H, Fixed, 95% CI)	2.95 [0.12, 71.85]
6.1 Inpatients and outpatients with same treatment regimens	1	339	Risk Ratio (M-H, Fixed, 95% CI)	2.95 [0.12, 71.85]
6.2 Inpatients and outpatients treated with different treatment regimens	1	106	Risk Ratio (M-H, Fixed, 95% CI)	0.0 [0.0, 0.0]
7 Satisfaction questionnaire	2	444	Risk Ratio (M-H, Fixed, 95% CI)	0.97 [0.90, 1.04]
7.1 Inpatients and outpatients treated with same treatment regimens	1	337	Risk Ratio (M-H, Fixed, 95% CI)	0.97 [0.92, 1.03]
7.2 Inpatients and outpatients with different treatment regimens	1	107	Risk Ratio (M-H, Fixed, 95% CI)	0.96 [0.71, 1.30]

Analysis 1.1. Comparison 1 Outpatient versus inpatient treatment, Outcome 1 Short-term all-cause mortality.

Review: Outpatient versus inpatient treatment for acute pulmonary embolism

Comparison: 1 Outpatient versus inpatient treatment

Outcome: 1 Short-term all-cause mortality

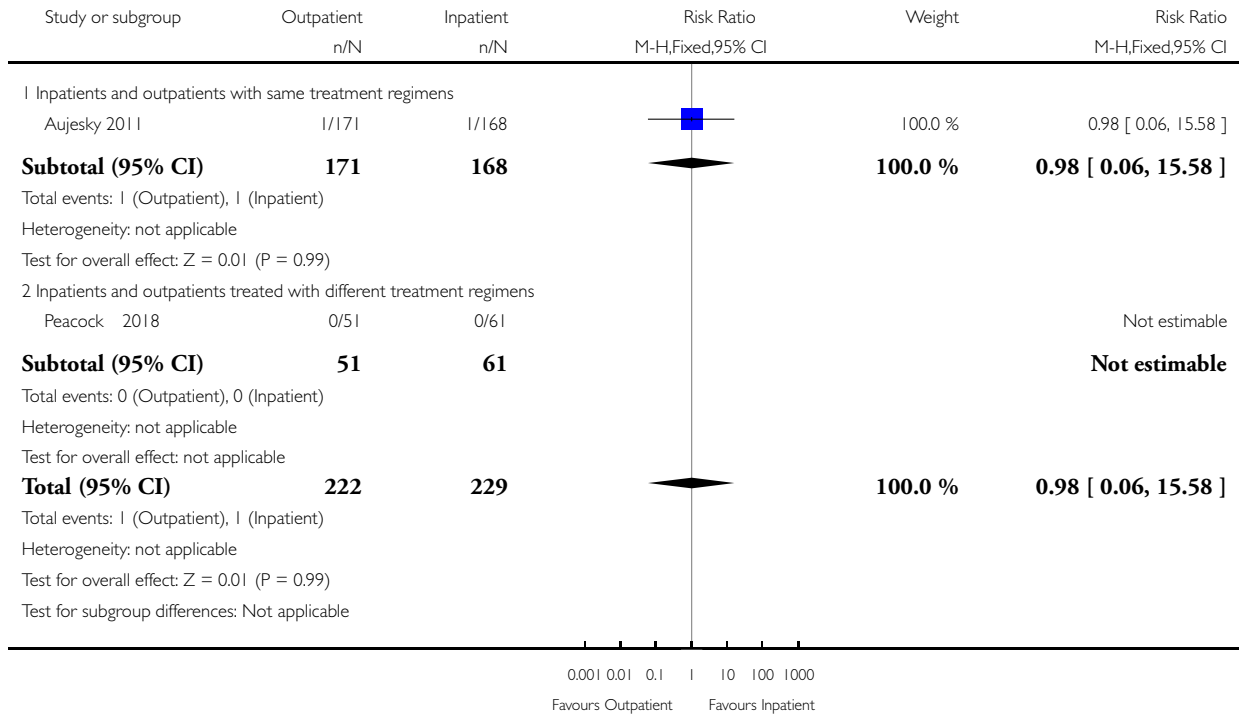


Analysis 1.2. Comparison 1 Outpatient versus inpatient treatment, Outcome 2 Long-term all-cause mortality.

Review: Outpatient versus inpatient treatment for acute pulmonary embolism

Comparison: 1 Outpatient versus inpatient treatment

Outcome: 2 Long-term all-cause mortality

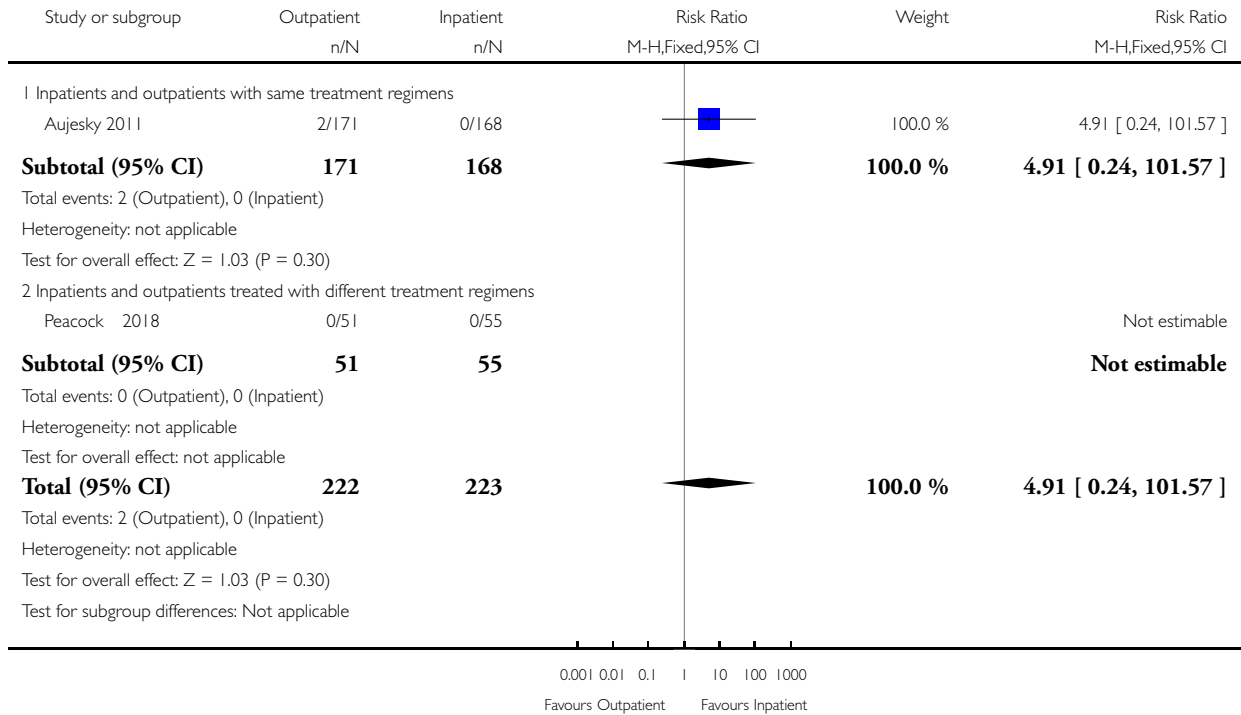


Analysis 1.3. Comparison 1 Outpatient versus inpatient treatment, Outcome 3 Major bleeding within 14 days.

Review: Outpatient versus inpatient treatment for acute pulmonary embolism

Comparison: 1 Outpatient versus inpatient treatment

Outcome: 3 Major bleeding within 14 days

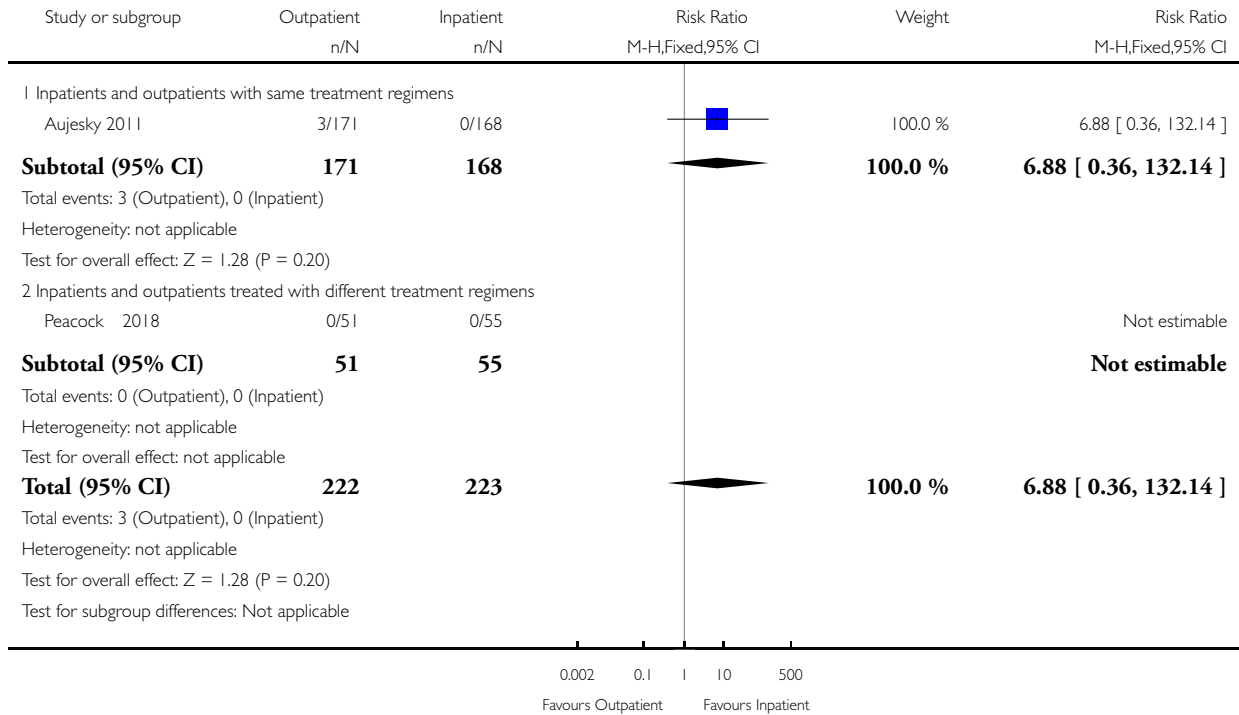


Analysis 1.4. Comparison 1 Outpatient versus inpatient treatment, Outcome 4 Major bleeding within 90 days.

Review: Outpatient versus inpatient treatment for acute pulmonary embolism

Comparison: 1 Outpatient versus inpatient treatment

Outcome: 4 Major bleeding within 90 days

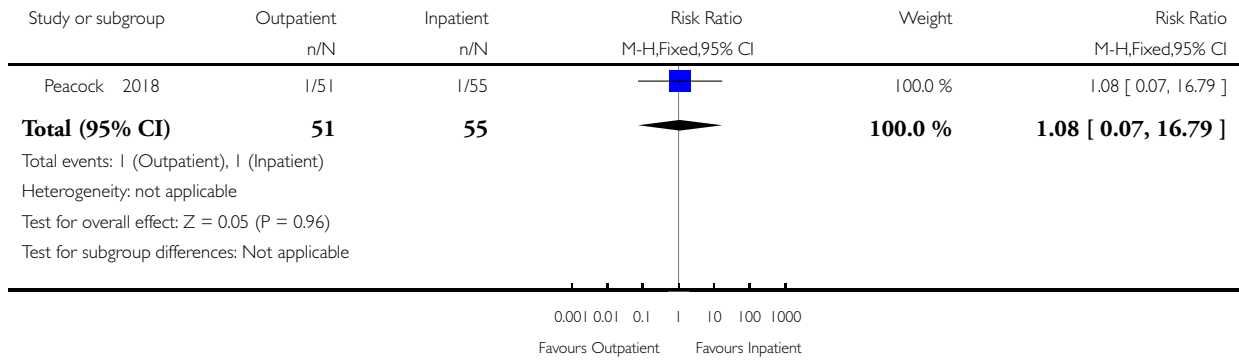


Analysis 1.5. Comparison 1 Outpatient versus inpatient treatment, Outcome 5 Minor bleeding.

Review: Outpatient versus inpatient treatment for acute pulmonary embolism

Comparison: 1 Outpatient versus inpatient treatment

Outcome: 5 Minor bleeding

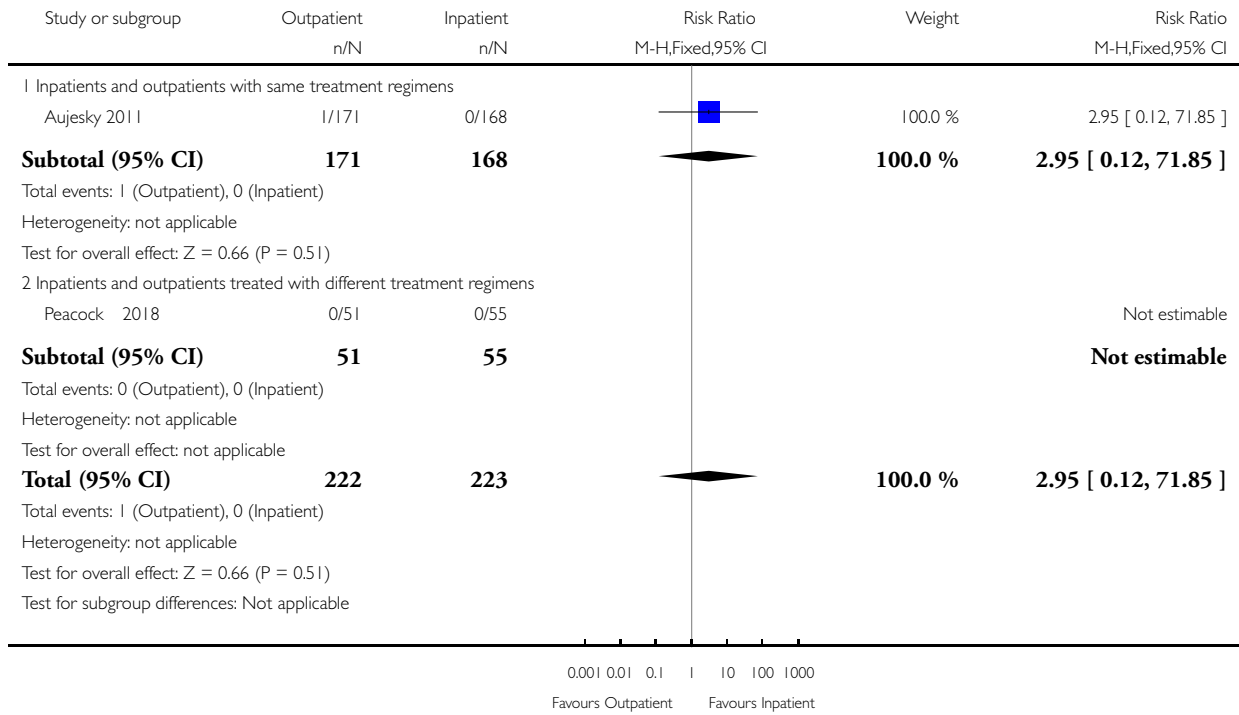


Analysis 1.6. Comparison 1 Outpatient versus inpatient treatment, Outcome 6 Recurrent pulmonary embolism within 90 days.

Review: Outpatient versus inpatient treatment for acute pulmonary embolism

Comparison: 1 Outpatient versus inpatient treatment

Outcome: 6 Recurrent pulmonary embolism within 90 days

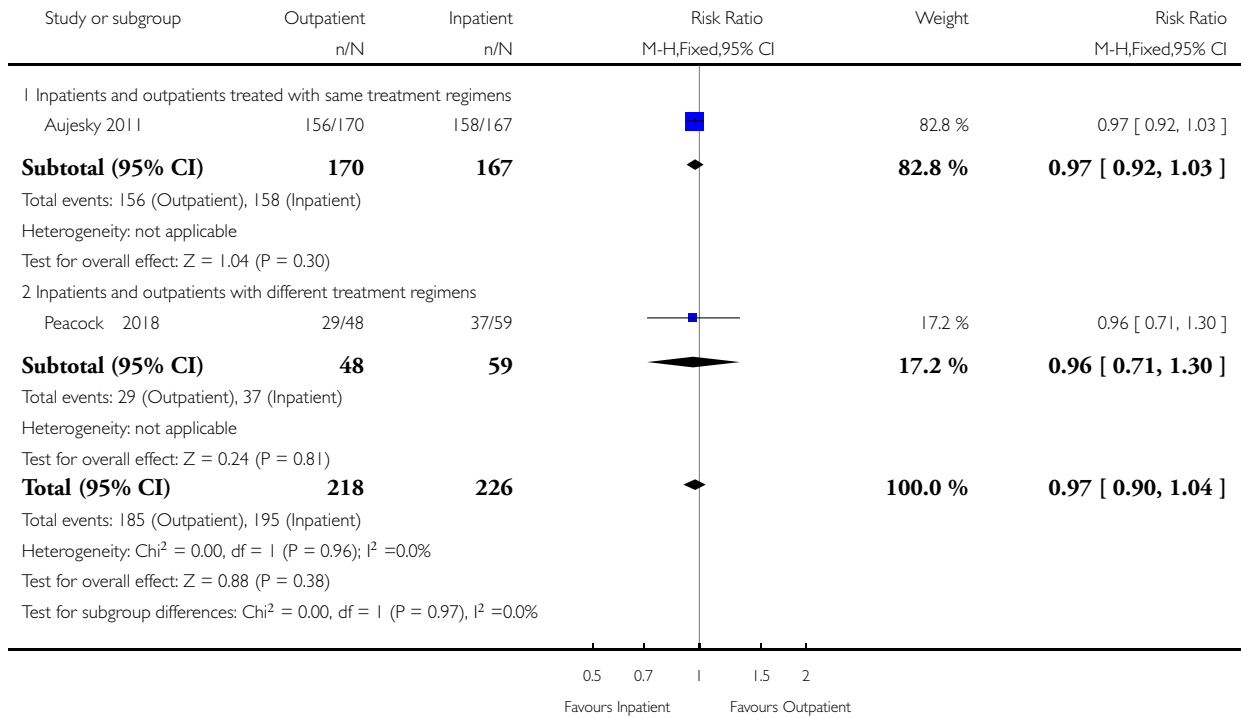


Analysis 1.7. Comparison 1 Outpatient versus inpatient treatment, Outcome 7 Satisfaction questionnaire.

Review: Outpatient versus inpatient treatment for acute pulmonary embolism

Comparison: 1 Outpatient versus inpatient treatment

Outcome: 7 Satisfaction questionnaire



APPENDICES

Appendix I. Geneva prediction score (GPS)

Predictors	Point score
Cancer	+2
Heart failure	+1

(Continued)

Previous deep vein thrombosis	+1
Systolic blood pressure < 100 mmHg	+2
PaO ₂ < 8kPa	+1
Deep vein thrombosis shown by ultrasound	+1
Total score	0-8

Patients with a total score ≤ 2 were assigned to the low-risk category, and those with a total score ≥ 3 points to the high-risk category

Appendix 2. The Pulmonary Embolism Severity Index (PESI)

Predictors	Points assigned
Age, per year	Age, in years
Male sex	+10
History of cancer	+30
History of heart failure	+10
History of chronic lung disease	+10
Pulse rate ≥ 110 /minute	+20
Systolic blood pressure < 100 mmHg	+30
Respiratory rate ≥ 30 /minute*	+20
Temperature < 36 °C	+20
Altered mental status†	+60
Arterial oxygen saturation < 90%*	+20

A total point score for a given patient is obtained by summing the patient's age in years and the points for each applicable predictor. Points assignments correspond with the following risk classes: ≤ 65 class I; 66-85 class II; 86-105 class III; 106-125 class IV and > 125 class V. Patients in risk classes I and II are defined as low-risk.

*Assessed with or without the administration of supplemental oxygen.

†Defined as confusion, disorientation or somnolence.

Appendix 3. The simplified version of the PESI (sPESI)

Variable	Points assigned
Age > 80 years	1
History of cancer	1
Chronic cardiopulmonary disease	1
Pulse rate \geq 110/minute	1
Systolic blood pressure < 100 mmHg	1
Arterial oxygen saturation < 90%	1

A total point score for a given patient is obtained by summing the points. The score corresponds with the following risk classes: 0, low risk; 1 or more, high risk. Empty cells indicate that the variable was not included

Appendix 4. Hestia criteria

Is the patient haemodynamically unstable? ^a
Is thrombolysis or embolectomy necessary?
Active bleeding or high risk of bleeding? ^b
> 24 h of oxygen supply to maintain oxygen saturation > 90%?
Is pulmonary embolism diagnosed during anticoagulant treatment?
Severe pain needing intravenous pain medication for > 24 h?
Medical or social reason for treatment in the hospital for > 24 h (infection, malignancy, no support system)?
Does the patient have a creatinine clearance of < 30 mL/min? ^c
Does the patient have severe liver impairment? ^d
Is the patient pregnant?
Does the patient have a documented history of heparin-induced thrombocytopenia?

Hestia rule interpretation: If the answer to one of the questions is yes, in-hospital treatment is recommended (Hestia rule positive). If the answer to all the questions is no, home treatment is recommended (Hestia rule negative).

^a Include the following criteria, but leave these to the discretion of the clinician: systolic blood pressure < 100 mmHg with heart rate > 100 beats/min; condition requiring admission to an intensive care unit.

^b Gastrointestinal bleeding in the preceding 14 days, recent stroke (< 4 weeks ago), recent operation (< 2 weeks ago), bleeding disorder or thrombocytopenia (platelet count < 75 x 10⁹/L), uncontrolled hypertension (systolic blood pressure > 180 mmHg or diastolic blood pressure > 110 mmHg).

^c Calculated creatinine clearance according to the Cockcroft-Gault formula.

^d Left to the discretion of the physician.

Appendix 5. British Thoracic Society exclusion criteria for outpatients management or early discharge

- Haemodynamic instability (heart rate > 110 beats/min; systolic blood pressure < 100 mmHg; requirement for inotropes and critical care; requirement for thrombolysis or embolectomy)
 - Oxygen saturations < 90% on air
 - Active bleeding or risk of major bleeding (eg. recent gastrointestinal bleed or surgery, previous intracranial bleeding, uncontrolled hypertension)
 - On full-dose anticoagulation at the time of the pulmonary embolism
 - Severe pain (eg. requiring opiates)
 - Other medical comorbidities requiring hospital admission
 - Chronic kidney disease stages 4 or 5 (estimated glomerular filtration rate < 30 mL/min) or severe liver disease
 - Heparin-induced thrombocytopenia within the last year and where there is no alternative to repeating heparin treatment
 - Social reasons which may include inability to return home, inadequate care at home, lack of telephone communication, concerns over compliance, etc.

Appendix 6. Database searches

Source	Search strategy	Hits retrieved
CENTRAL via CRSO	#1 MESH DESCRIPTOR Thrombosis 1309 #2 MESH DESCRIPTOR Thromboembolism 953 #3 MESH DESCRIPTOR Venous Thromboembolism 311 #4 MESH DESCRIPTOR Venous Thrombosis EXPLODE ALL TREES 2108 #5 (thrombus* or thrombotic* or thrombolic* or thromboemboli* or thrombos* or embol*):TI,AB,KY 21426 #6 MESH DESCRIPTOR Pulmonary Embolism EXPLODE ALL TREES 781 #7 (PE or DVT or VTE):TI,AB,KY 5796 #8 (((vein* or ven*) near thromb*)):TI,AB,KY 7539 #9 (blood near/3 clot*):TI,AB,KY 0 #10 #1 OR #2 OR #3 OR #4 OR #5 OR #6 OR #7 OR #8 OR #9 25483 #11 MESH DESCRIPTOR Outpatients EXPLODE ALL TREES 1066 #12 MESH DESCRIPTOR Inpatients EXPLODE ALL TREES 782 #13 MESH DESCRIPTOR Patient Care EX-	1759

(Continued)

	<p> PLODE ALL TREES 53193 #14 MESH DESCRIPTOR Ambulatory Care EXPLODE ALL TREES 3410 #15 MESH DESCRIPTOR Home Nursing EXPLODE ALL TREES 273 #16 MESH DESCRIPTOR Hospitalization EXPLODE ALL TREES 11800 #17 MESH DESCRIPTOR Outpatient Clinics, Hospital EXPLODE ALL TREES 626 #18 in-patient :TI,AB,KY 5836 #19 inpatient :TI,AB,KY 6041 #20 hospitali* :TI,AB,KY 29944 #21 bed-ridden :TI,AB,KY 22 #22 home :TI,AB,KY 22684 #23 out-patient :TI,AB,KY 1341 #24 outpatient :TI,AB,KY 17880 #25 ambulatory* :TI,AB,KY 16079 #26 domicil* :TI,AB,KY 418 #27 #11 OR #12 OR #13 OR #14 OR #15 OR #16 OR #17 OR #18 OR #19 OR #20 OR #21 OR #22 OR #23 OR #24 OR #25 OR #26 123614 #28 #10 AND #27 3293 #29 01/01/2014 TO 26/03/2018:CD 408317 #30 #28 AND #29 1759 </p>	
Clinicaltrials.gov	<p> Outpatient OR Outpatients OR Inpatient OR Inpatients OR Patient Care OR Ambulatory Care OR Home Nursing OR Outpatient Clinics Pulmonary Embolism OR Acute Pulmonary Embolism OR Pulmonary Thromboembolism Last update posted from 01/01/2014 to 03/28/2018 </p>	195
ICTRP Search Portal	<p> Pulmonary Embolism OR Acute Pulmonary Embolism OR Pulmonary Thromboembolism OR Pulmonary AND Outpatient OR Outpatients OR Inpatient OR Inpatients OR Patient Care OR Ambulatory Care OR Home Nursing OR Hospitalization OR Outpatient Clinics </p>	73
MEDLINE	<p> 1 THROMBOSIS/ 65220 2 THROMBOEMBOLISM/ 22449 3 Venous Thromboembolism/ 8046 4 exp Venous Thrombosis/ 51000 5 (thrombus* or thrombotic* or thrombolic* or thromboemboli* or thrombos* or embol*).ti,ab. 295531 6 exp Pulmonary Embolism/ 35920 7 (PE or DVT or VTE).ti,ab. 45444 8 ((vein* or ven*) adj thromb*).ti,ab. 60141 </p>	653

(Continued)

	9 (blood adj3 clot*).ti,ab. 9925 10 or/1-9 382689 11 exp OUTPATIENTS/ 13278 12 exp Patient Care/ 849726 13 exp Ambulatory Care/ 49708 14 exp Home Nursing/ 9116 15 exp Outpatient Clinics, Hospital/ 16494 16 in-patient.ti,ab. 52003 17 inpatient.ti,ab. 63402 18 bed-ridden.ti,ab. 459 19 exp INPATIENTS/ 17707 20 Home Nursing/ 8361 21 Outpatient Clinics, Hospital/ 15165 22 in-patient.ti,ab. 52003 23 Inpatient*.ti,ab. 88382 24 bed-ridden.ti,ab. 459 25 out-patient.ti,ab. 9890 26 outpatient.ti,ab. 109086 27 ambulatory*.ti,ab. 70535 28 domicil*.ti,ab. 3802 29 or/11-28 1093389 30 randomized controlled trial.pt. 456087 31 controlled clinical trial.pt. 92247 32 randomized.ab. 405922 33 placebo.ab. 187323 34 drug therapy.fs. 2001767 35 randomly.ab. 287027 36 trial.ab. 421562 37 groups.ab. 1775080 38 or/30-37 4163193 39 (2017* or 2018*).ed. 1137739 40 10 and 29 and 38 and 39 653 41 from 40 keep 1-653 653	
Embase	1 thrombosis/ 93511 2 thromboembolism/ 49292 3 venous thromboembolism/ 30143 4 exp vein thrombosis/ 94140 5 (thrombus* or thrombotic* or thrombolic* or thromboemboli* or thrombos* or embol*).ti,ab. 336866 6 (PE or DVT or VTE).ti,ab. 66507 7 ((vein* or ven*) adj3 thromb*).ti,ab. 84338 8 (blood adj3 clot*).ti,ab. 9231 9 or/1-8 465829 10 exp outpatient/ 90993 11 exp patient care/ 616173 12 exp ambulatory care/ 31732 13 exp home care/ 48012	1588

(Continued)

	<p>14 exp outpatient department/ 45341 15 in-patient.ti,ab. 79159 16 inpatient.ti,ab. 93577 17 bed-ridden.ti,ab. 532 18 hospital patient/ 129991 19 exp home care/ 48012 20 exp outpatient department/ 45341 21 in-patient.ti,ab. 79159 22 Inpatient*.ti,ab. 123955 23 bed-ridden.ti,ab. 532 24 out-patient.ti,ab. 12569 25 outpatient.ti,ab. 151131 26 ambulatory*.ti,ab. 73129 27 domicil*.ti,ab. 3148 28 or/10-27 1066126 29 domicil*.ti,ab. 3148 30 controlled clinical trial/ 411625 31 random\$.ti,ab. 1147104 32 randomization/ 69127 33 intermethod comparison/ 222434 34 placebo.ti,ab. 219134 35 (compare or compared or comparison).ti. 329390 36 ((evaluated or evaluate or evaluating or assessed or assess) and (compare or compared or comparing or comparison)).ab. 1585695 37 (open adj label).ti,ab. 61445 38 ((double or single or doubly or singly) adj (blind or blinded or blindly)).ti,ab. 155643 39 double blind procedure/ 121111 40 parallel group\$1.ti,ab. 19247 41 (crossover or cross over).ti,ab. 71025 42 ((assign\$ or match or matched or allocation) adj5 (alternate or group\$1 or intervention\$1 or patient\$1 or subject\$1 or participant\$1)).ti,ab. 244589 43 (assigned or allocated).ti,ab. 285412 44 (controlled adj7 (study or design or trial)).ti,ab. 256876 45 (volunteer or volunteers).ti,ab. 169739 46 trial.ti. 210016 47 or/29-46 3403612 48 (2017* or 2018*).em. 3130096</p>	
CINAHL	<p>S41 S39 AND S40 154 S40 EM 2017 OR EM 2018 291,195 S39 S25 AND S38 2,520 S38 S26 OR S27 OR S28 OR S29 OR S30 OR S31 OR S32 OR S33 OR S34 OR S35 OR S36 OR S37 336,569 S37 (MH "Random Assignment") 37,362</p>	154

(Continued)

	<p>S36 (MH "Single-Blind Studies") or (MH "Double-Blind Studies") or (MH "Triple-Blind Studies") 32,494</p> <p>S35 (MH "Crossover Design") 11,043</p> <p>S34 (MH "Factorial Design") 911</p> <p>S33 (MH "Placebos") 8,331</p> <p>S32 (MH "Clinical Trials") 92,961</p> <p>S31 TX "multi-centre study" OR "multi-center study" OR "multicentre study" OR "multicenter study" OR "multi-site study" (4,394</p> <p>S30 TX crossover OR "cross-over" 14,345</p> <p>S29 AB placebo* 27,892</p> <p>S28 TX random* 215,310</p> <p>S27 TX trial* 246,180</p> <p>S26 TX "latin square" 141</p> <p>S25 S10 AND S24 12,647</p> <p>S24 S11 OR S12 OR S13 OR S14 OR S15 OR S16 OR S17 OR S18 OR S19 OR S20 OR S21 OR S22 OR S23 700,842</p> <p>S23 TX "out-patient" 1,421</p> <p>S22 TX "in-patient" 600,886</p> <p>S21 TX domicil* 1,108</p> <p>S20 TX ambulatory* 34,561</p> <p>S19 TX outpatient 65,392</p> <p>S18 TX bed-ridden 41</p> <p>S17 TX inpatient 86,288</p> <p>S16 (MH "Ambulatory Care Facilities") 4,047</p> <p>S15 (MH "Home Nursing") 2,937</p> <p>S14 (MH "Ambulatory Care") 7,125</p> <p>S13 (MH "Patient Care") 16,853</p> <p>S12 (MH "Inpatients") 65,637</p> <p>S11 (MH "Outpatients") 36,503</p> <p>S10 S1 OR S2 OR S3 OR S4 OR S5 OR S6 OR S7 OR S8 OR S9 45,072</p> <p>S9 TX blood n3 clot* 890</p> <p>S8 TX ((vein* or ven*) n2 thromb*) 11,142</p> <p>S7 TX PE or DVT or VTE 11,729</p> <p>S6 (MH "Pulmonary Embolism") 4,685</p> <p>S5 TX thrombus* or thrombotic* or thrombolic* or thromboemboli* or thrombos* or embol* 35,636</p> <p>S4 (MH "Venous Thrombosis+") 6,338</p> <p>S3 (MH "Venous Thromboembolism") 3,034</p> <p>S2 (MH "Thromboembolism") 3,207</p> <p>S1 (MH "Thrombosis") 4,590</p>	
AMED	<p>1 THROMBOSIS/ 198</p> <p>2 THROMBOEMBOLISM/ 72</p> <p>3 Venous Thromboembolism/ 0</p> <p>4 exp Venous Thrombosis/ 0</p> <p>5 (thrombus* or thrombotic* or thrombolic* or</p>	28

(Continued)

thromboemboli* or thrombos* or embol*).ti,ab. 638	
6 exp Pulmonary Embolism/ 53	
7 (PE or DVT or VTE).ti,ab. 243	
8 ((vein* or ven*) adj thromb*).ti,ab. 308	
9 (blood adj3 clot*).ti,ab. 34	
10 or/1-9 863	
11 exp OUTPATIENTS/ 317	
12 exp Patient Care/ 5736	
13 exp Ambulatory Care/ 414	
14 exp Home Nursing/ 615	
15 exp Outpatient Clinics, Hospital/ 87	
16 in-patient.ti,ab. 23780	
17 inpatient.ti,ab. 2899	
18 bed-ridden.ti,ab. 7	
19 exp INPATIENTS/ 414	
20 Home Nursing/ 515	
21 Outpatient Clinics, Hospital/ 86	
22 in-patient.ti,ab. 23780	
23 Inpatient*.ti,ab. 3501	
24 bed-ridden.ti,ab. 7	
25 out-patient.ti,ab. 23780	
26 outpatient.ti,ab. 2926	
27 ambulatory*.ti,ab. 1186	
28 domicil*.ti,ab. 119	
29 or/11-28 33684	
30 10 and 29 246	
31 exp CLINICAL TRIALS/ 3711	
32 RANDOM ALLOCATION/ 314	
33 DOUBLE BLIND METHOD/ 643	
34 Clinical trial.pt. 1205	
35 (clinic* adj trial*).tw. 5324	
36 ((singl* or doubl* or trebl* or tripl*) adj (blind* or mask*)).tw. 2782	
37 PLACEBOS/ 583	
38 placebo*.tw. 3070	
39 random*.tw. 17240	
40 PROSPECTIVE STUDIES/ 1047	
41 or/31-40 22174	
42 30 and 41 28	

FEEDBACK

Aujesky, 2 December 2014

Summary

The systematic review on outpatient versus inpatient treatment of pulmonary embolism (PE) by Yoo, Queluz, and El Dib published in the Cochrane Library in November 14, 2014 noted our randomized non-inferiority trial¹ as the sole study deemed worthy to be included in the systematic review. However, the review authors declare in the abstract that our study quality is “very low” because “blinding of the outcome assessors was not reported”. Furthermore, the authors say in the summary of findings that “it is possible to blind for this clinical question”. We disagree with these statements. While our data analysts knew treatment assignment, we blinded the outcome assessors to treatment arm, as explicitly described in the published manuscript. Yoo, et al. call for “well-conducted randomized controlled trials (where people are allocated at random to one of two or more treatments groups, one of which is a control (dummy!) treatment)”, we cannot imagine a design differing from ours that would allow participants and study personnel to be blinded for home versus hospital care. Finally, contrary to the assertion in this review, we never described our trial as double-blind placebo-controlled clinical trial but as “an international, open-label, randomised, non-inferiority trial.” We hope these variances from the trial design will be incorporated into the Cochrane review.

The challenge of doing a systematic review that analyzes data on a topic where a singular experimental design exists is laid bare in this effort; perhaps this topic - in contrast to the care of deep venous thrombosis absent PE - is not ready for such an analysis. We also look forward to more data that will help guide implementation of care options outside the hospital for those with acute PE.

Reference:

¹Aujesky D, Roy PM, Verschuren F, et al. Outpatient versus inpatient treatment for patients with acute pulmonary embolism: an international, open-label, randomised, non-inferiority trial. *Lancet*. 2011;378:41-8.

Reply

We thank you very much for your comments on this review. Please see below our responses:

1. We reviewed the domain related to blinding of personnel and participants and we decided to withdraw this domain from the risk of bias assessment because it is not applicable for this clinical question due to the nature of the interventions.
2. As per your paper on page 42 you quoted that “Data analysers were unmasked to treatment group assignment” but you did not specify that the data analyser was the same as the outcome assessor. As we used the risk of bias assessment according to Higgins 2011, we judged this domain as high risk of bias. However, as per your clarification we have changed this domain to low risk of bias.
3. As per your comment related to “very low quality evidence”, this was classified according to the GRADE principles (Guyatt 2008) which recognize the precision of the confidence interval, sample size, publication bias and heterogeneity. However, most of these items were not addressed due to the fact there was only one included study. We have reclassified to ‘low quality of evidence’ following the reclassification of the risk of detection bias.
4. We revised the description of the trial from ‘multicenter randomised double-blind placebo-controlled clinical trial’ to ‘an international, open-label, randomised, non-inferiority trial’.

Thank you very much.

Contributors

Feedback: Drahomir Aujesky MD, MSc and Donald M. Yealy MD

Reply: Dr Hugo Yoo, Dr Thais Queluz, and Regina El Dib, PhD

WHAT'S NEW

Date	Event	Description
26 March 2018	New citation required but conclusions have not changed	A new search was run, which resulted in one new included study and two new excluded studies. New authors have joined the review team. There are no changes to the conclusions
26 March 2018	New search has been performed	A new search was run, which resulted in one new included study and two new excluded studies

HISTORY

Protocol first published: Issue 8, 2012

Review first published: Issue 11, 2014

Date	Event	Description
4 February 2015	Feedback has been incorporated	The review authors have responded to the feedback submitted December 2014 and revised their review accordingly
2 December 2014	Feedback has been incorporated	Feedback has been submitted for this review. The review authors have been invited to respond to the feedback

CONTRIBUTIONS OF AUTHORS

Conceiving the review: HHBY

Co-ordinating the review: CB

Undertaking manual searches: HHBY

Screening search results: HHBY, VSNN and PJFVB

Organising retrieval of papers: HHBY

Screening retrieved papers against inclusion criteria: HHBY, VSNN and PJFVB

Appraising quality of papers: VSNN and PJFVB

Abstracting data from papers: HHBY, VSNN and PJFVB

Writing to authors of papers for additional information: HHBY

Obtaining additional data about papers: HHBY

Obtaining and screening data on unpublished studies: HHBY

Data management for the review: HHBY, VSNN and PJFVB

Data entry: VSNN and PJFVB

Statistical data analysis: VSNN

Double entry of data: (data entered by person one: HHBY; data entered by person two: VSNN)

Interpretation of data: HHBY, VSNN and PJFVB

Statistical inferences: HHBY, VSNN and PJFVB

Writing the review: HHBY, VSNN, PJFVB and CB

Guarantor for the review: HHBY

Person responsible for reading and checking review before submission: HHBY, VSNN, PJFVB and CB

DECLARATIONS OF INTEREST

HHBY: none known.

VSNN: received travel and meeting expenses from Novartis for attending the annual meetings of the Endocrine Society between 2009 and 2013.

PJFVB: none known.

CB: none known.

SOURCES OF SUPPORT

Internal sources

- São Paulo State University-UNESP, Brazil.
RENOVE-0108/008/13-PROPe/CDC

External sources

- Chief Scientist Office, Scottish Government Health Directorates, The Scottish Government, UK.
The Cochrane Vascular editorial base is supported by the Chief Scientist Office.

DIFFERENCES BETWEEN PROTOCOL AND REVIEW

2018 review version

In [Types of participants](#), the measurement tools that aim to classify mortality risk rate was expanded to be as inclusive as possible. The age of participants was amended from > 18 years to \geq 18 years.

In [Types of outcome measures](#), we amended the length of short-term mortality from 30 days to 7 to 10 days to reflect more accurately the short-term nature.

In [Subgroup analysis and investigation of heterogeneity](#) we included:

- inpatients and outpatients with same treatment regimens versus inpatients and outpatients treated with different treatment regimens.

In the single study included in the previous version of this review, both inpatients and outpatients received the same treatment regimen. For this update, the inpatient and outpatient groups in a new included study received different treatment regimens. We have added this subgroup analysis to assess any potential effects.

2014 review version

The objective was rephrased according to Cochrane guidelines.

In [Types of participants](#), the definition of acute pulmonary embolism was amended to be as inclusive as possible.

In [Types of interventions](#), the definition of 'outpatients' was amended to reflect true cases of outpatients only and avoid confusion with 'early discharge' and 'outpatients'.

INDEX TERMS

Medical Subject Headings (MeSH)

*Ambulatory Care; *Hospitalization; Acute Disease; Confidence Intervals; Pulmonary Embolism [mortality; *therapy]; Randomized Controlled Trials as Topic

MeSH check words

Adult; Humans