



THE UNIVERSITY *of* EDINBURGH

Edinburgh Research Explorer

Extragonadal Effects of Follicle-Stimulating Hormone on Osteoporosis and Cardiovascular Disease in Women during Menopausal Transition

Citation for published version:

Zhu, D, Li, X, Macrae, VE, Simoncini, T & Fu, X 2018, 'Extragonadal Effects of Follicle-Stimulating Hormone on Osteoporosis and Cardiovascular Disease in Women during Menopausal Transition', *Trends in Endocrinology and Metabolism*, vol. 29, no. 8, pp. 571-580. <https://doi.org/10.1016/j.tem.2018.06.001>

Digital Object Identifier (DOI):

[10.1016/j.tem.2018.06.001](https://doi.org/10.1016/j.tem.2018.06.001)

Link:

[Link to publication record in Edinburgh Research Explorer](#)

Document Version:

Peer reviewed version

Published In:

Trends in Endocrinology and Metabolism

General rights

Copyright for the publications made accessible via the Edinburgh Research Explorer is retained by the author(s) and / or other copyright owners and it is a condition of accessing these publications that users recognise and abide by the legal requirements associated with these rights.

Take down policy

The University of Edinburgh has made every reasonable effort to ensure that Edinburgh Research Explorer content complies with UK legislation. If you believe that the public display of this file breaches copyright please contact openaccess@ed.ac.uk providing details, and we will remove access to the work immediately and investigate your claim.



Trends in Endocrinology and Metabolism

Extragonadal-effects of FSH on osteoporosis and cardiovascular disease in women

--Manuscript Draft--

Manuscript Number:	TEM-D-18-00111R1
Article Type:	Review
Corresponding Author:	Xiaodong Fu Guangzhou Medical University Guangzhou, Guangdong CHINA
First Author:	Dongxing Zhu, PhD
Order of Authors:	Dongxing Zhu, PhD Xiaosa Li, MSc Vicky E Macrae, PhD Tommaso Simoncini Xiaodong Fu
Abstract:	<p>The risk of osteoporosis and cardiovascular disease increases significantly in postmenopausal women. Until recently, the underlying mechanisms have been primarily attributed to estrogen decline following the menopause. However, FSH levels rise sharply during menopausal transition and are maintained at elevated levels for many years. FSHR has been detected in various extragonadal sites, including osteoclasts and endothelial cells. Recent advances show that FSH may also contribute to postmenopausal osteoporosis and cardiovascular disease. We review here the key actions through which FSH could contribute to osteoporosis and cardiovascular disease in women transitioning through the menopause. Advancing our understanding of the precise mechanisms through which FSH promotes osteoporosis and cardiovascular disease may provide new opportunities for improving quality of life for postmenopausal women.</p>



School of Basic Sciences, Guangzhou Medical University
Laboratory of Molecular Endocrinology

Guangzhou, 03.06.2018

**To Editor-in-Chief,
Trends in Endocrinology and Metabolism**

Dear, Dr Beymer

We are extremely grateful for your prompt dealing with our manuscript entitled 'Extragonadal effects of FSH on osteoporosis and cardiovascular disease in women'. We thank the reviewer and the editor very much for their constructive comments on our manuscript. In light of these comments we have made amendments and prepared a revised manuscript. This has entailed editing and adding new text and figures, with changes highlighted in red. We have listed each of the reviewer's and the editor's comments and provided our detailed response.

We believe our manuscript is much improved and we hope that it is now considered suitable for publication in TEM.

Yours sincerely,

On behalf of the authors,

Prof. Xiaodong Fu

Xiaodong Fu, MD., Ph.D.

Professor,
Director of Laboratory of Molecular Endocrinology,
Department of Physiology, School of Basic Sciences
Guangzhou Medical University
195 Dongfeng Xi Road, 510180
Guangzhou, CHINA
Tel: +86.20.81340754
E-mail: fuxiaod@gzhum.edu.cn; fuxiaodong27@hotmail.com

Authors' response to the editor and the reviewer's comments: TEM-D-18-00111

EDITORIAL COMMENTS:

OVERALL ASSESSMENT

Very interesting insights on the role of FSH in osteoporosis and cardiovascular disease risk. Will appropriate revisions it will be a good resource for the broad readership of TEM.

Authors' response:

We thank the editor for such positive comments on our manuscript.

LENGTH

Currently at a length of ~2100 words, being on the shorter side of TEM reviews. Thus in addressing the reviewer comments, the main text can be expanded to between 3500 and 4000 words (final) if needed.

Authors' response:

We have revised and expanded our manuscript according to the editor's and the reviewer's comments. The length of our revised manuscript is ~2800 words.

CLARITY/ACCESSIBILITY

Please review the changes I have suggested in the main text and make any modifications necessary if the intended scientific meaning has been altered.

Authors' response:

We thank the editor's comments on our main text and we have made amendments accordingly.

Editor comment 1:

It is well know that Estrogen is a negative regulator of FSH secretion, is there evidence that the menopausal decline in E2 is not the main causative factor of elevated FSH levels in menopause?

Authors' response: We thank the editor for this comment. In addition to Estrogen, the glycoprotein hormone inhibin A and inhibin B have also been shown to suppress the production of FSH in a manner of negative feedback [ref 20, 21 in the main text]. Indeed, previous studies have shown that both decreased levels of estrogen and inhibins contribute to the elevated levels of FSH during the menopause transition [1]. We have included additional text in our revised manuscript as below (page 19, box 1, line 11-12).

“In addition, previous studies have shown that inhibin A and B also inhibits the production of FSH in a manner of negative feedback [20, 21].”

Editor comment 2:

This is only needed after the first glossary word.

Authors' response: We have removed them in our revised manuscript, except the first glossary word.

Editor comment 3:

Is there any information on the dynamics of the changes does FSH rise before the drop in estrogen levels?

Authors' response: We thank the editor for this comment. Previous studies have shown that FSH rises before the drop in estrogen levels during menopausal transition [ref.2 in the main text]. We have included a new introduction section in our revised manuscript (page 3-4, line 61-96). In the introduction, we have provided detailed information about hormonal changes in women with menopausal transition and statistics regarding incidence of rates of osteoporosis and CVD in pre- vs post-menopausal women. We have also provided figure 1 for demonstrating FSH rises before estrogen.

“Introduction

During menopausal transition, women undergo irregular menstruation or infrequent menses, with the permanent cessation of menstrual cycle due to depletion of viable follicles [1]. The length of menopausal transition is highly variable, ranging from 3-9 years in women aged around 45–55 years old. Menopausal transition is associated with alterations in hormone profiles. The two well established hormonal profiles are (1) a marked decline in estradiol and (2) a notable rise in follicle-stimulating hormone (FSH). The Study of Women's Health Across the Nation (SWAN), the most comprehensive U.S. study to date, followed premenopausal women over the menopause transition. Previous studies examined 1,215 SWAN participants who transitioned through the menopause over time and reported that FSH levels increased as early as 6 years before the final menstrual period (FMP) and stabilized 2 years after the FMP. Estrogen levels declined until 2 years before the FMP and stabilized after 2 years around the FMP [2] (Figure 1). Across the menopausal transition, serum levels of FSH increased from 15.15 mIU/mL to 98.21 mIU/mL, while serum levels of estradiol dropped from 60.26 pg/ml to 19.12 pg/ml [2].

Osteoporosis is defined as a skeletal disease with a significant reduction in bone mineral density and an associated increased risk of bone fracture [3]. Menopause is widely recognized as a risk factor for osteoporosis and bone fracture in women's later life. It has been reported that bone loss accelerates during the late stage of menopausal transition and continues into old age [4-6]. A large cohort of UK women study has shown that the relative risk (RR) of hip fracture in postmenopausal women is significantly higher than in premenopausal women with similar age (adjusted RR 2.22, 95% confidence interval [CI] 1.22–4.04; $p=0.009$) [7]. Menopause is also thought to be a risk factor for cardiovascular disease in women. The Framingham Heart Study reported that postmenopausal women aged 50–59 years had 4 times the 10-year incidence of coronary heart disease as premenopausal women of similar age, but results were not adjusted for age or smoking [8]. The Nurses' Health Study reported that women who had undergone bilateral oophorectomy showed an increased risk of coronary heart disease compared to premenopausal women (rate ratio, 2.2; 95 percent confidence limits, 1.2 and 4.2) [9]. Interestingly, recent studies have reported elevated risk factors for cardiovascular disease including body fat composition [10], lipids and lipoprotein [11], and vascular remodeling [12-13] in women transitioning through the menopause. Increased

susceptibility to osteoporosis and cardiovascular disease in postmenopausal (see Glossary) women may be associated with changes in their hormone levels.”

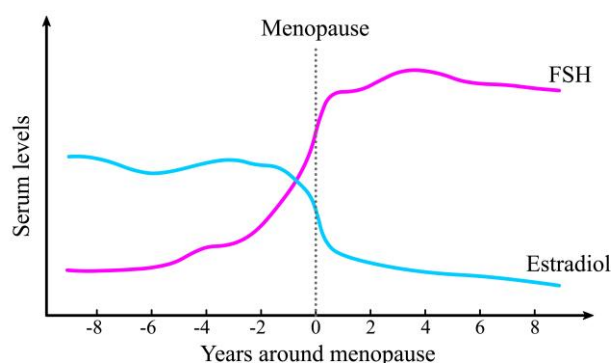


Figure 1. Ovarian hormonal changes in perimenopause. With transition into menopause, FSH increases markedly and estrogen declines. In postmenopausal women, estrogen levels are low, and FSH levels remain high for several years [2]. This graph is intended to show the trends of changes in FSH and Estrogen levels and do not stand for absolute amounts.

Editor comment 4:

We encourage you to contribute any of these optional features along with your revised manuscript:

Figure360 video: Create a narrated, animated version of one of your figures that helps the reader zoom in on the most important take-home message in two minutes or less. The video should contain data and panels from only one figure, and include minimal introduction. For further guidelines and examples, please click here.

Interactive Questions (IQ): Use our online “Interactive Questions” tool to create a brief multiple-choice quiz, based on your review, that will be presented to readers alongside the published article as an interactive quiz to test their knowledge.

Authors’ response: A Figure360 video for Figure 4 is provided in our revised manuscript, which demonstrates the potential mechanisms through which FSH increases the risk of cardiovascular disease in women.

REVIEWER COMMENTS:

Reviewer #1:

I strongly support the publication

Authors’ response: We thank the reviewer for such positive comments on our manuscript.

Reviewer #2:

The present manuscript article by Zhu et al. presented a brief overview of the extragonadal actions of FSH specifically related to its actions in bone and the cardiovascular system. This review is timely given the recent publications in mice models indicating that the rise in FSH, rather than the decline in estradiol, may contribute to adiposity and loss of bone. Overall, the article succinctly presents most of the leading evidence in this newly emerging field. The

article is mostly well written, although some re-organization and editing for clarity and English are warranted as detailed below. One major limitation to the article in its current form is the tone that FSH undoubtedly plays a primary role in the development of osteoporosis and cardiovascular disease, when in fact, most research in this area has been conducted in animal or cell models, with little prospective evidence of translation across species, including humans. In fact, a recent review article regarding the extragonadal actions of FSH authored by T. Raj Kumar, a leading expert in the field concludes, "Human studies are currently controversial, and definitive answers are yet to come. If the extragonadal action of FSH is also confirmed in humans, novel therapeutic opportunities for treating postmenopausal osteoporosis and increased adiposity will be feasible." (Kumar TR. *Endocrinology*, 2018, 159(1):2-8). Thus, the state of the field remains somewhat unsettled. Much of this uncertainty is resultant to the inability of independent research groups to reproduce some of the studies reporting the detection of the FSH receptor (FSHR) in extragonadal tissues. Thus, the extragonadal distribution of FSHR, and if all extragonadal actions of FSH occur exclusively through FSHR, remain uncertain, especially in humans. Our comments below are broken into General (comments that apply to many sections of the paper and will not necessarily be pointed out at each individual instance) and detailed comments.

General Comments:

- 1) Throughout the manuscript, the FSHR is referred to as the sole receptor for FSH. This is not necessarily known as an absolute truth and should be tempered throughout the paper.
- 2) Manuscript could be structured better so that it is easy to follow.
- 3) Authors need to be careful referring to data in rodents as postmenopausal osteoporosis or CVD because rodents don't go through menopause. The model used (e.g., ovariectomy) should be stated and described as a model of menopause.

Authors' response:

We thank the reviewer for their comments. In our revised manuscript, we have made amendments accordingly. These includes:

- (1) We have referred to FSHR as the receptor of FSH.
- (2) We have re-structured our manuscript accordingly.
- (3) We have revised our manuscript accordingly and the rodent models are stated and described across our manuscript where necessary.

Detailed Comments:

1) Highlights -

a. #5 - FSH represents a [potential] novel therapeutic target for the treatment of postmenopausal osteoporosis and CVD. 'Potential' should be added to this statement, because more research is needed before it is certain of its potential utility in humans.

Authors' response: We have added 'potential' in our revised manuscript (Highlights, line 11-12).

“FSH represents a potential novel therapeutic target for the treatment of postmenopausal osteoporosis and cardiovascular disease.”

2) Abstract -

a. Line 4 - Editing for English: "However, follicle stimulation hormone[s] levels rise sharply during the menopausal and [are maintained] at elevated levels for many years.

Authors' response: We have amended this sentence in our revised manuscript (page 2, line 35-36).

“However, follicle-stimulating hormone (FSH) levels rise sharply during menopausal transition and are maintained at elevated levels for many years.”

b. Line 5 - Remove the phrase “sole receptor for FSH”

Authors' response: We have removed the phrase ‘sole receptor for FSH’ through our revised manuscript.

c. Line 9 - "We review here the key actions of FSH in postmenopausal women and discuss underlying mechanisms". This review is really not specific to postmenopausal women per se, thus, suggest that this be tempered and say either just women, or "We review here the key actions by which FSH could contribute to the development of osteoporosis and CVD in women as they transition through menopause. - This same comment can be made about the title

Authors' response: We have amended our text in the abstract as below (page 2, line 38-40).

“We review here the key actions by which FSH could contribute to the development of osteoporosis and cardiovascular disease in women as they transition through menopause.”

We have amended our title as below (Page 1, line 1).

“Extragenital effects of follicle-stimulating hormone on osteoporosis and cardiovascular disease in women with menopausal transition.”

d. Line 11 - "disease may provide new opportunities for improving [quality of life] for postmenopausal women.

Authors' response: We have corrected it as below (page 2, line 43).

“...disease may provide new opportunities for improving quality of life for postmenopausal women.”

3) Introduction -

a. An introduction is needed to set up the manuscript. The intro could contain details on how sex hormones change across the menopausal transition including a figure that demonstrates how FSH rises before estradiol declines during early perimenopause and how FSH stays high and E2 low postmenopause.

Authors' response: We agree with the reviewer's comments. We have included an introduction section and a figure in our revised manuscript (page 3-4, line 61-96).

b. Inclusion of statistics regarding incidence of rates of osteoporosis and CVD in pre- vs post-menopausal women could be used here to highlight the importance of the problem.

Authors' response: We thank the reviewer for their suggestion. We have now included statistics regarding incidence of rates of osteoporosis and CVD in pre- vs post-menopausal women in our revised manuscript (page 3-4, line 82-96).

“A large cohort of UK women study has shown that the relative risk (RR) of hip fracture in postmenopausal women is significantly higher than in premenopausal women with similar age (adjusted RR 2.22, 95% confidence interval [CI] 1.22–4.04; $p=0.009$) [7]. Menopause is also thought to be a risk factor for cardiovascular disease in women. The Framingham Heart Study reported that postmenopausal women aged 50–59 years had 4 times the 10-year incidence of coronary heart disease as premenopausal women of similar age, but results were not adjusted for age or smoking [8]. The Nurses' Health Study reported that women who had undergone bilateral oophorectomy showed an increased risk of coronary heart disease compared to premenopausal women (rate ratio, 2.2; 95 percent confidence limits, 1.2 and 4.2) [9]. Interestingly, recent studies have reported elevated risk factors for cardiovascular disease including body fat composition [10], lipids and lipoprotein [11], and vascular remodeling [12-13] in women transitioning through the menopause. Increased susceptibility to osteoporosis and cardiovascular disease in postmenopausal (see Glossary) women may be associated with changes in their hormone levels.”

4) The role of FSH in gonadal development and beyond

a. Second paragraph, pg 3 - also need to state that other investigators have not been successful in reproducing the original experiments conducted in HUVECs (e.g., Stelmaszewska et al did not find FSHR expression in HUVECs, nor did FSH treatment show effects on tube formation, NO production, wound healing or proliferation in HUVECs.)

Authors' response: We thank the reviewer for their comments. We are sorry for not including these information in our original manuscript due to the limit of references numbers requested by the Journal. We have included new text in our revised manuscript (Page 4, line 113-118).

“A number of reports have recently demonstrated that it is also expressed in a range of extragonadal sites, including human osteoclasts [31] and monocytes [32], tumor vasculature and metastases [33], the liver [34] and human umbilical vein endothelial cells (HUVECs) [35, 36], although other independent investigators have not been successful in reproducing the original experiments conducted in HUVECs [37].”

b. Second paragraph, pg 3, 4th sentence from the bottom "The decline in estrogen across the period of menopausal transition..." needs references to support this statement.

Authors' response: References have been added into our revised manuscript [ref 38, 39] (page 5, line 123).

5) FSHR mutations and their clinical consequences (page 4 and table 1)

a. This section should be linked to extragonadal tissue response, pathophysiology/disease, if not, suggest that this should be removed.

b. Table 1 - link the "Phenotype of subjects" column with extragonadal consequences of these phenotypes.

c. Line 8 - "have demonstrated that each motif plays an important role in FSHR function...(box2)..." The description in Box 2 describes FSHR signaling cascades, but does not appear to discuss how different mutations impact signaling through these cascades. Please clarify.

Authors' response: We thank again for the reviewer's comments. All the functional studies for these mutations in this section were performed in HEK293 cells or granulosa cells. These mutations are not associated with extragonadal tissue response, pathophysiology/disease, therefore we have removed this section for our revised manuscript.

6) FSH enhances bone resorption in postmenopausal women (page 5)

a. This subheading is somewhat misleading as the evidence presented does not actually detail how FSH enhances bone resorption in postmenopausal women per se. A more appropriate subheading could be "FSH and the risk for osteoporosis"

Authors' response: We agree with the reviewer's comments. We have amended the subheading for this section (page 5, line 129).

“FSH and the risk for osteoporosis”

b. Paragraph 1, Line 1 - "Osteoporosis is characterized by an absolute reduction in BMD and an associated risk for bone fractures" Reference needed.

Authors' response: The reference has been added in our revised manuscript [ref 3] (page 2, line 79).

c. Paragraph 1, Line 3 - "Estrogen deficiency has [long] been considered [for long] as a major contributor of postmenopausal osteoporosis" Also needs reference.

Authors' response: We have amended our text (page 5) and included the reference in our revised manuscript [ref 40] (page 5, line 132).

“Estrogen deficiency has long been considered as a major contributor of postmenopausal osteoporosis [40].”

d. Paragraph 1, Line 4 - The sentence that being with "However, studies have revealed that nearly half..." is unclear. This sentence needs to be restructured and/or peri-menopause needs to be better defined in the Glossary. This text refers to Box 3, which describes the hormonal alterations in estrogen and FSH across the menopausal transition, but including this information in the introduction with a figure (that is referred to here) would be more clear.

Authors' response: We have included an introduction section and a figure for our revised manuscript (page 3-4, line 61-96). We have restructured the sentences (page 5, line 132-137) and re-defined peri-menopause in Glossary (page 21, line 12).

“However, it has been reported that bone loss occurs around 2–3 years before the FMP [41], when estrogen levels are relatively normal while FSH levels are significantly elevated (Figure

1). In addition, previous cross-sectional [42] and longitudinal [43] studies have shown that higher serum FSH levels but not lower serum estradiol levels are associated with lower bone mineral density among pre- and early perimenopausal women enrolled in SWAN.”

Glossary

“Perimenopause (STRAW +10 Staging System: stage -2 to +1a): the time around menopause and begins at Stage –2 and ends 12 months after the final menstrual period (Stage +1a).”

e. Paragraph 2 - When citing references 45 and 47, the statements do not indicate what the outcomes may be adjusted for (such as education, physical activity level, diet, etc.). These adjustments are detailed in the results sections of the references papers.

Authors’ response: We thank the reviewer for consideration of this point. We have amended our text to include these adjustments (page 5-6, line 142-155).

“A small cohort study has shown that women with hypergonadotropic amenorrhea (mean FSH>40 mIU/mL) have lower lumbar spine bone density than those with hypogonadotropic amenorrhea (mean FSH<40 mIU/mL), with comparable estrogen levels between the two groups. In addition, only FSH levels were negatively correlated with lumbar spine bone density in hypergonadotropic amenorrheic women, after adjustment for age and body mass index (BMI) [44]. Furthermore, previous studies investigated 2,375 pre and early perimenopausal women from SWAN and found that higher FSH concentrations were associated with elevated concentrations of the bone resorption marker urinary N-telopeptide of type I collagen (NTx), after adjustment for BMI, thyroid disease, insulin sensitivity, difficulty in paying for basics, race/ethnicity, seasonality and site. Higher FSH concentrations were also associated with higher osteocalcin concentrations (bone formation maker), after adjustment for smoking, physical activity, physical functioning, BMI, diabetes, insulin sensitivity, thyroid disease, race and site [45].”

f. Paragraph 2, line 5 - Sentence that begins with "Interestingly, postmenopausal women with an activating FSHR polymorphism..." seems out of place in this section. Would make more sense in the section about FSHR mutations. This is also an example of what could be included in the FSHR mutation section to link the mutation with extragonadal consequences.

Authors’ response: We have removed the FSHR mutation section in our revised manuscript.

g. Paragraph 2, line 6 - Sentence that begins with "Furthermore, a cross-sectional study of 2,375 peri-menopausal women..." is misleading. Authors state evidence for bone turnover, but only present data regarding bone resorption. Were bone formation markers measured and reported in the original paper? If so, they need to be included in this sentence or bone turnover needs to be changed to bone resorption.

Authors’ response: We are sorry for not including bone formation markers in our original manuscript. We have amended the text in our revised manuscript (page 5-6, line 147-155).

“Furthermore, previous studies investigated 2,375 pre and early perimenopausal women from

SWAN and found that higher FSH concentrations were associated with elevated concentrations of the bone resorption marker urinary N-telopeptide of type I collagen (NTx), after adjustment for BMI, thyroid disease, insulin sensitivity, difficulty in paying for basics, race/ethnicity, seasonality and site. Higher FSH concentrations were also associated with higher osteocalcin concentrations (bone formation maker), after adjustment for smoking, physical activity, physical functioning, BMI, diabetes, insulin sensitivity, thyroid disease, race and site [45].”

h. Paragraph 2, line 10 - Sentence beginning with "Further studies have shown that FSH levels are positively correlated with bone resorption..." only includes data for CTX, but the paper also reported osteocalcin. Why was only CTX included in this statement? This sentence might also better fit in the next paragraph since that paragraph focuses on the imbalance between formation and resorption. Also the end of the sentence states "postmenopausal healthy women and menopausal transition women" these phrases need to be edited for word order and correct term use.

Authors’ response: We thank the reviewer for their comments. We agree with the reviewer that it fits better in the next paragraph. We have amended our text and moved it to the next paragraph (page 6-7, line 180-185).

“Interestingly, further studies have shown that serum levels of FSH are positively correlated with the bone resorption marker CTX and the bone formation marker osteocalcin in healthy postmenopausal women [57], indicating a potential role of FSH in bone turnover. In addition, a significantly positive association between FSH and CTX has also been reported in osteoporotic Chinese women during the menopausal transition [58].”

i. Paragraph 3, line 1 - needs reference

Authors’ response: The reference has been added [ref 49] (page 6, line 164).

j. Paragraph 3, line 8 - what is meant by "conceptive studies"?

Authors’ response: We are sorry for the mistake. We have amended our text (page 6, line 176).

“several studies have been performed to test whether the specific inhibition of FSH can prevent ovariectomy-induced bone loss in mouse models.”

k. Paragraph 3 - References 58 and 59 are from mice, but this is not explicitly stated. Please indicate that this is not human data.

Authors’ response: We thank the reviewer for consideration of this point. We have clearly stated these data are from mice in our revised manuscript (page 6, line 176-180).

“several studies have been performed to test whether the specific inhibition of FSH can prevent ovariectomy-induced bone loss in mouse models. Indeed, blocking FSH with a specific antibody targeting its β -subunit increases bone mass and reduces body fat in mouse models [55, 56].”

7) FSH increases the risk of cardiovascular disease in postmenopausal women

a. We suggest that the heading be changed to "FSH and the risk for cardiovascular disease"

Authors' response: We have amended the subheading title for this section (page 7, line 188).

“FSH and the risk for cardiovascular disease”

b. Paragraph 1, line 4 - The section of this paragraph starting with "Interestingly, epidemiological studies have shown that estrogen replacement therapy..." is confusing and the transition 'however' appears to be misused. The clinical trial data showed harm in women who were 20+ years postmenopause.

Authors' response: We thank the reviewer for their comments. We have amended the text in our revised manuscript (page 7, line 192-200).

“Whether estrogen replacement therapy could reduce cardiovascular disease remains ambiguous. Previous studies have shown that estrogen replacement therapy at standard daily dose of 0.625mg or less decreases cardiovascular disease risk in postmenopausal women without previous history of heart disease. However, estrogen at a higher daily dose of 0.625mg or more and in combination with progestin may modestly increase the risk for stroke [60, 61]. Recent clinical trials have demonstrated that menopausal hormone therapy for 5 to 7 years is not associated with risk of all-cause, cardiovascular, or cancer mortality among 27,347 postmenopausal women aged 50 to 79 years during a cumulative follow-up of 18 years [62].”

c. Paragraph 1, line 9 - If a figure showing the FSH/estrogen changes over the menopausal transition is included, it could be referenced at the end of the sentence starting with "In contrast to the decline in estrogen levels observed during menopause.."

Authors' response: We have included figure 1 in our revised manuscript and referred to it here (page 7, line 202).

d. Paragraph 1, line 13 - Include what the outcomes were for determining "subclinical atherosclerosis" (e.g., coronary artery calcium, carotid IMT).

Authors' response: We have amended our text and include these information (page 7, line 203-206).

“Several previous studies have examined associations between FSH levels and subclinical atherosclerosis including coronary artery calcium and the carotid intima-media thickness (IMT) in women, with the majority of them reporting a positive correlation [63-65].”

e. Paragraphs 2 & 3 - The mechanisms linking FSH and CVD need to be more clearly organized/listed so that it is easy to read. We suggest breaking it into paragraphs or sections that focus on adiposity, angiogenesis, lipids, calcification, and endothelial activation with a bit more detail in each section. Right now, the section on endothelial cell activation is highly detailed, while just a sentence or two are dedicated to each other mechanism listed. If the preference of the

authors is to keep the emphasis on endothelial cells as a primary mechanism, then we suggest moving paragraph 3 ahead of paragraph 2.

Authors' response: We thank the reviewer for their suggestions and we agree this section should be restructured. We have broken this section into several paragraphs (page 8-10, line 218-280).

“Potential mechanisms by which FSH increases risk of cardiovascular disease

FSH may increase risk of cardiovascular disease through a number of distinct mechanisms (Figure 4):

Effects of FSH on endothelial cell activation and atherosclerosis

Endothelial cell activation by oxidized lipids and pro-inflammatory stimuli plays an important role in the initiation and progression of atherosclerosis. Activated endothelial cells express a variety of adhesion molecules such ICAM-1 and VCAM-1, which recruits leukocytes to the endothelium [68]. Our recent report demonstrated for the first time that FSH directly accelerates atherosclerosis in ovariectomized ApoE^{-/-} mice, independent of estrogen deficiency. Mechanistically, FSH up-regulated VCAM-1 expression in human umbilical vein endothelial cells and subsequently increased human monocyte adhesion through FSHR/Gαs/cAMP/PKA and PI3K/Akt/mTOR/NF-κB signaling pathways. Interestingly, FSHR was specifically localized in caveolae of endothelial cells. Caveolin-1, the main protein component of caveolae, directly interacted with FSHR and mediated its downstream signaling actions [36].

FSH accelerates adiposity and lipid accumulation

Cui *et al* recently reported that FSH treatment increases the weight of abdominal fat and lipid accumulation of adipocytes in chickens, through enhancing the expression of genes in the fatty acid metabolism pathway, retinol metabolism pathway, and peroxisome proliferator-activated receptor (PPAR) signaling pathway [69]. Further studies showed that FSHR was functionally expressed in human and mouse fat tissues and adipocytes. FSH treatment increased lipid biosynthesis, lipid droplet formation, altered the secretion of leptin and adiponectin through the Gαi/Ca²⁺/CREB pathway in mouse 3T3-L1 preadipocytes [70]. Interestingly, recent elegant studies performed by Liu *et al* have shown that blockade of FSH signaling with a specific antibody reduces high-fat diet-induced obesity in wild type mice and adiposity in ovariectomized mice [55]. Specifically, antibody-treated mice showed significantly reduced total (TFV), subcutaneous (SFV) and visceral fat volume, but interscapular brown adipose tissue remained unchanged [55]. These data suggest that FSH may play an important role in determining body fat distribution, which may contribute to cardiovascular dysfunction [71]. Interestingly, it has been shown that serum FSH levels are positively associated with serum total cholesterol and LDL-C levels in Chinese postmenopausal women [34]. FSH administration in ovariectomized mice promotes dyslipidemia through inhibiting hepatic cholesterol metabolism. Mechanistically, FSH reduces LDLR levels in hepatocytes and attenuates the endocytosis of LDL-C, leading to an elevated circulating LDL-C level [34], which is an independent risk factor for atherosclerosis. Taken together, these studies suggest that FSH may increase risk factors for cardiovascular disease through accelerating adiposity and lipid accumulation.

FSH promotes angiogenesis

Angiogenesis inhibition through the application of endostatin or TNP-470 has been shown to decrease plaque formation and intimal neovascularization in ApoE^{-/-} mice [72]. FSH signaling through FSHR in HUVECs promotes angiogenesis, which is independent of VEGF [73]. Interestingly, treatment of HUVECs with FSH stimulated the PI3K/AKT signaling pathway, with similar efficacy as VEGF [73]. These data suggest that FSH may increase atherosclerosis through promoting angiogenesis. However, the effect of FSH on angiogenesis cannot be reproduced by other investigators and the discrepancy remains to be clarified [37].

Potential role of FSH in vascular calcification.

Vascular calcification is a common feature of advanced atherosclerosis and is important in determining atherosclerotic plaque stability [74]. We and others have previously demonstrated that vascular calcification shares many similarities to bone remodeling, which involves maintaining a balance between osteoblasts and osteoclasts [75-77]. The presence of osteoclast-like cells and active resorption of ectopic mineral deposition have been reported in calcified atherosclerotic plaques [78]. Furthermore, monocytes and macrophages are frequently observed in atherosclerotic plaque [79]. These data suggest that osteoclasts, through a signaling cascade involving FSH (Figure 3) may be recruited to calcified regions where they can resorb mineral deposition, subsequently increasing the incidence of plaque rupture [80] (Figure 4). In addition, FSH stimulates immune cells to release inflammatory cytokines [53, 54], which may also contribute to vascular calcification (Figure 4). ”

f. Paragraphs 2 & 3 - Check this section to make sure it is clearly state which results are from clinical versus mouse versus cell studies.

Authors' response: We thank the reviewer for their comments. We have clearly indicated which results are from clinical versus mouse versus cell studies in our revised manuscript.

g. Paragraph 2 - Although increased adiposity is touched on briefly as a potential mechanism for increased CVD risk, the importance of body fat distribution is not addressed. The referenced study by Liu et al. reported reduced visceral adiposity after FSH antibody treatment in mice, but this finding is not included. Considering the potential effect of FSH in determining body fat distribution is an important mechanism underlying cardiovascular risk.

Authors' response: We thank the reviewer for their comments. We have included this point in our revised manuscript (page 9, line242-249).

“Interestingly, recent elegant studies performed by Liu *et al* have shown that blockade of FSH signaling with a specific antibody reduces high-fat diet-induced obesity in wild type mice and adiposity in ovariectomized mice [55]. Specifically, antibody-treated mice showed significantly reduced total (TFV), subcutaneous (SFV) and visceral fat volume, but interscapular brown adipose tissue remained unchanged [55]. These data suggest that FSH may play an important role in determining body fat distribution, which may contribute to cardiovascular dysfunction [71].”

h. Paragraph 2, Line 17 - "Osteoclasts, through a signaling cascade involving FSH (as described above)..." Is this referring to the signaling cascade described in one of the boxes or Fig 1 (I do not see Fig 1 referenced in the text?) The reference to "above" needs clarification.

Authors' response: We are sorry for this confusion. This is referring to the signaling cascade described in Figure 3.

Authors' action: We have amended our text and referred to Figure 3 and Figure 4 (page 9-10, line 270-278).

“We and others have previously demonstrated that vascular calcification shares many similarities to bone remodeling, which involves maintaining a balance between osteoblasts and osteoclasts [75-77]. The presence of osteoclast-like cells and active resorption of ectopic mineral deposition have been reported in calcified atherosclerotic plaques [78]. Furthermore, monocytes and macrophages are frequently observed in atherosclerotic plaque [79]. These data suggest that osteoclasts, through a signaling cascade involving FSH (Figure 3) may be recruited to calcified regions where they can resorb mineral deposition, subsequently increasing the incidence of plaque rupture [80] (Figure 4).”

8) Clinical use and long-term safety on cardiovascular disease of FSH agonists

a. Why does this section heading only refer to CVD risk and not osteoporosis risk? Even if there is a paucity of data, this should be addressed and included in the title.

Authors' response: We thank the reviewer for their comments. We have amended the title for this section (page 10, line 282-283).

“Clinical use and long-term safety of recombinant FSH therapies against cardiovascular disease and osteoporosis”

b. Is FSH agonist the correct term to us to refer to these recombinant FSH therapies?

Authors' response: We agree with the reviewer's comments. We have changed “FSH agonist” to “recombinant FSH therapies” (page 10, line 293).

c. Paragraph 1 - Are all of these details about recombinant FSH therapy necessary?

Authors' response: We thank the reviewer for the suggestion. We have removed all of these details about “recombinant FSH therapies” in our revised manuscript.

d. Paragraph 2 should be moved before Paragraph 1. The entire paper to this point is discussing postmenopausal women, and then this section starts with talking about the different recombinant FSH therapies that are available. The initial thought is, why would a postmenopausal woman need FSH therapy? The second paragraph goes on to explain that these therapies are used in premenopausal women undergoing fertility treatments and disease risk has been assessed in women who have undergone these therapies. It is this paragraph that is of most importance in this section. With this context in mind it is easier to understand the content in this section

Authors' response: We agree with reviewer's comments. We have removed Paragraph 1 in our revised manuscript.

9) Concluding remarks and future perspectives

a. Line 2 - "Despite growing evidence showing that FSH accelerates osteoporosis and CVD in postmenopausal women..." This statement needs to be tempered. There are no direct data in humans that show that FSH accelerates osteoporosis and CVD. There are data that suggest that FSH could contribute to the decline in bone health with the menopause transition. There are no direct data concerning CVD.

Authors' response: We agree with the review's comments. We have amended our text in the revised manuscript (page 11, line 301-307).

“Epidemiological and animal studies have revealed that FSH contributes to the decline in bone health in women undergoing menopausal transition. Emerging data has shown that FSH treatment enhances atherosclerotic plaque formation in ovariectomized *AopE*^{-/-} mice [36]. However, our understanding of the molecular mechanisms through which FSH increases the risk of osteoporosis and cardiovascular disease is far from complete (see outstanding questions).”

b. Line 5 - "Particularly, most research investigating the effects of FSH on [postmenopausal] osteoporosis and CVD has focused on a limited number of FSH target genes..." Where are these data presented in the paper? By target genes are the authors referring to signaling pathways?

Authors' response: We thank the reviewer for their comments. We have amended the text in our revised manuscript (page 11, line 307-309).

“The vast technological advancements such as Next-Generation Sequencing will provide valuable new information on the molecular pathophysiology of FSH in extragonadal tissues, such as bone and blood vessels.”

c. Line 11 - "In addition, blockade of FSH has been shown, at least in mice, to improve postmenopausal osteoporosis and CVD." This statement needs to be reworded. Mice do not undergo menopause, so stating it as improve OVX induced bone loss (or a model of menopause) would be more appropriate. Also, please present and reference the data that FSH blockage improves CVD in mice.

Authors' response: We thank the reviewer for their comments. We have previous shown that FSH treatment enhances atherosclerosis in ovariectomized *AopE*^{-/-} mice [36]. We have amended the text in our revised manuscript (page 11, line 309-318).

“Animal studies have shown that blocking FSH increases bone mass, reduces body fat and induces thermogenic adipose tissue. These data suggest that blocking FSH may not only be a potential opportunity for treating osteoporosis, but also of benefit in the treatment of visceral fat associated diseases such as metabolic syndrome and cardiovascular disease [55]. Whether FSH promotes osteoporosis and cardiovascular disease in women remains to be further elucidated in humans. In conclusion, a fuller understanding of the molecular pathological roles of FSH for osteoporosis and cardiovascular disease in postmenopausal women could

have significant importance in improving diagnosis, management and treatment of these major diseases.”

10) Box 1

a. Line 3 - "FSH levels are strictly controlled by the HPG axis and [the steroid] sex hormone[s]- mediated feedback" This needs rewording

Authors' response: We have amended our text (page 19, box1, line 3-4).

“FSH levels are strictly controlled by the hypothalamic pituitary gonadal axis and sex hormone-mediated negative feedback.”

b. Line 6 - "produce FH and LH, which exert[s] their primary function..." Remove the s in exerts.

Authors' response: We have amended our text (page 19, box1, line 6).

“which exert their primary function in the gonads.”

c. The glycosylation issue is a potentially very important one, particularly in extragonadal tissues. May want to consider mentioning this in the main text of the article.

Authors' response: We thank the reviewer for the suggestion. We have mentioned this in our main text of the article (page 4, line 104-105).

“Similar to other glycoprotein hormones, glycosylation of FSH plays an important role in regulating its activity [15] (see Box1).”

11) Box 2

a. Are the signaling cascades mentioned in this box pertinent to specific extragonadal tissues? Are some specific to certain cell types in bone or the cardiovascular system? IF so, this should be mentioned?

Authors' response: We thank the reviewer for their comments. These signaling cascades are not pertinent to specific extragonadal tissues and not specific to certain cell types in bone and the cardiovascular system. These signaling cascades were reported in granulosa cells, Sertoli cells or HEK293 cells. Some of these signaling pathways such as ERK, AKT have also been reported in extragonadal cells, such as HUVECs, preadipocytes etc.

b. There is a lot of detail in here without much context and the long list of Gas-independent mechanisms in the middle of the box are hard to follow. Are these pathways stimulated through FSH interaction with FSHR or are they alternative signaling pathways for FSH outside of FSHR? Without referring out to the cited references, it is difficult to follow the importance of the included information. Would an accompanying figure lend more relevance?

Authors' response: We thank the reviewer for their suggestions. These signaling pathways are stimulated via FSH interaction with FSHR coupled with multiple different partners. We have amended our text and provided a new figure for FSH downstream signaling pathways (box2, page 20).

“It is now well recognized that upon FSH binding, the activated FSHR triggers a number of intracellular signaling pathways either in parallel or sequentially. Classically, upon FSH activation, FSHR functionally couples to *G_s* subunit and induces the cAMP/PKA signaling pathway, subsequently activating the cAMP regulatory element-binding protein (CREB) and modulating gene expression, such as aromatase and inhibin- α [24]. This canonical signaling pathway plays a key role for its biological actions inside granulosa cells in the ovary and sertoli cells in the testes. It is now clear that FSHR also involves other transduction mechanisms upon FSH binding. In recent years, a number of *G_s*-independent transduction mechanisms have been found. It has been reported that FSHR also couples to *G_{ai}* [25], *G_{aq}* [26], β -arrestins [27], Adapter protein containing the Pleckstrin homology domain, the Phosphotyrosine binding domain, and the Leucine zipper motif (APPL) [28-30]. These FSHR interacting partners enable FSH to activate alternative signaling pathways, including those mediated by distinct kinases such as inositol trisphosphate (IP3), Akt and ERK1/2. This complex signaling network triggered by FSH fine-tunes its biological action and determines the fate of target cells (Figure 2).”

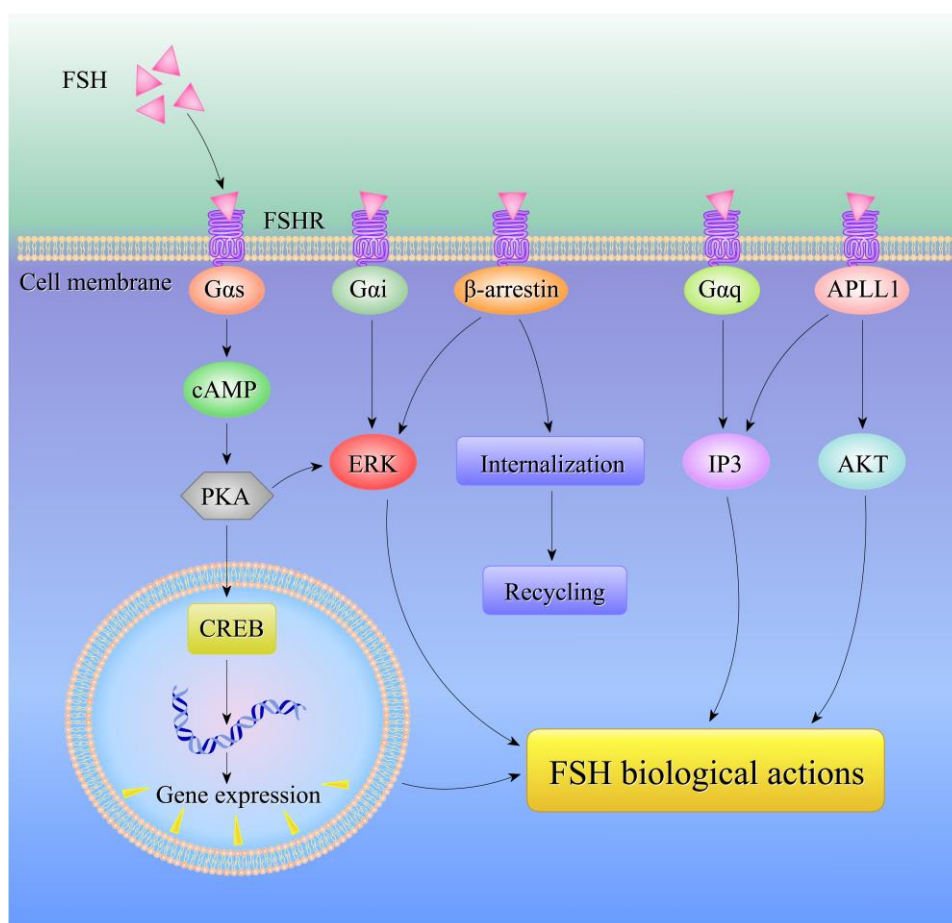


Figure 2. Multiple intracellular signaling pathways induced by FSH. Classically, upon FSH binding, the activated FSHR induces canonical *G_s*/cAMP/PKA signaling pathway, which subsequently activates CREB and regulates target gene expression. FSHR also activates its downstream signaling pathways through other *G_s*-independent transduction mechanisms mainly coupling to other *G α* subunits, β -arrestin-dependent signaling, EGFR transactivation, and APPL1-mediated signals [20-26].

12) Box 3

a. This information would fit nicely into an introduction section with an accompanying figure.

Authors' response: We agree with the reviewer's comments. We have added an introduction section with Figure 1 for our revised manuscript (page 3-4, line 61-96).

b. The description of the SWAN study is longer than necessary. Although details about the SWAN study are pertinent, including more detailed results instead of just two spot measures of E2 and FSH would be informative. Particularly, detailing the time course of the change of both hormones over the menopausal transition would be helpful.

Authors' response: We agree with the reviewer's comments. We have added an introduction and Figure 1 in our revised manuscript.

13) Table 1

a. Remove unless specific connections with extragonadal tissues (osteoporosis/CVD) are made

Authors' response: It has been removed in our revised manuscript.

14) Glossary

a. Including menopause, perimenopause, postmenopausal and the menopause transition is redundant and the definitions provided are unacceptable. The STRAW+10 criteria should be used and cited for all definitions (Harlow SD et al. Menopause. 2012 Apr;19(4):387-95.)

Authors' response: We thank the reviewer for their constructive advice. We have re-defined these terms using The STRAW+10 criteria (page 21, Glossary).

“Menopausal transition (STRAW +10 Staging System: Stages -2 to -1) [ref. 1]

Early menopausal transition (Stage -2): Criteria include increased variability in menstrual cycle length, a persistent difference of 7 days or more in the length of consecutive cycles, elevated but variable FSH levels, low antimüllerian hormone and antral follicle count.

Late menopausal transition (Stage -1): Criteria include the occurrence of amenorrhea of 60 days or longer, elevated FSH levels greater than 25 IU/L, low antimüllerian hormone and antral follicle count, and vasomotor symptoms (likely).

Perimenopause (STRAW +10 Staging System: stage -2 to +1a): the time around menopause and begins at Stage -2 and ends 12 months after the final menstrual period (Stage +1a).

Postmenopause (STRAW +10 Staging System: Stage +1a, +1b, +1c, +2): The time after the final menstrual period.”

15) Figure 1

a. Legend - "RANKL released by osteoblasts or T cells binds to RANK in monocytes and promotes osteoclast formation [which subsequently leads to osteoporosis]" The end of this sentence (in brackets) needs to be revised with more detail. Oversimplification.

Authors' response: We thank the reviewer for their comments. We have amended the figure legend with more detail for [which subsequently leads to osteoporosis] (page 22, line 570-578).

“**Figure 3. FSH accelerates bone resorption through increasing osteoclast formation.** FSH directly enhances RANK expression in monocytes [50-52]. RANKL released by osteoblasts or T cells binds to RANK in monocytes and promotes osteoclasts formation. FSH also stimulates monocytes and macrophages to release inflammatory cytokines such as TNF α , IL1 β and IL6 [53-54]. These inflammatory cytokines stimulate osteoblasts and T cells to secrete RANKL, which promotes osteoclasts formation. Osteoclasts are the cells responsible for bone resorption, and osteoblasts are the cells for bone formation. Increased ration of osteclasts to osteoblasts leads to bone mineral loss, which may subsequently cause osteoporosis [49].”

b. Line 4 - The use of the transition "conversely" appears to be incorrect. It should state, "FSH also stimulates..." because it is still describing a mechanism leading to bone resorption.

Authors' response: We agree the reviewer's comments. We have amended our text accordingly (page 22, line 573-574).

“FSH also stimulates monocytes and macrophages to release inflammatory cytokines such as TNF α , IL1 β and IL6 [50-51].”

c. The use of references may be appropriate in the figure legend.

Authors' response: We have included references in our figure legend (page 22).

16) Figure 2

a. Line 1 - "FSH increases the expression of VCAM-1" is this direct or through some other mechanism? On the figure there is no arrow directly from FSH to VCAM-1, this should be added if it is a direct effect.

Authors' response: We thank the reviewer for their comments. We have previously shown that FSH directly increases the expression of VCAM-1 [ref 36 in the main text]. The arrow has been added in Figure 4.

b. Line 7 - T cells are mentioned as a cell type that FSH may stimulate to release inflammatory cytokines, but they are not included on the figure.

Authors' response: T cells have been added in Figure 4.

c. The use of references may be appropriate in the figure legend.

Authors' response: We have included references in our figure legend (page 22).

17) Outstanding questions

a. #3 - Suggest rewording to state: Do osteoclast or vascular endothelial cell specific FSHR conditional knockout mice demonstrate improved bone and vascular health?

Authors' response: We thank the reviewer for their suggestions. We have amended our text in the revised manuscript (outstanding questions, line 7-8).

“Do osteoclast or vascular endothelial cell specific FSHR conditional knockout mice demonstrate improved bone and vascular health?”

b. #4 - "FSH enhanced postmenopausal atherosclerosis" This statement is reaching and should be reworded. There is no direct evidence to support this in postmenopausal women.

Authors' response: We agree with the reviewer's comments. We have amended our text in the revised manuscript (outstanding questions, line 9-10).

“Are there any other mechanisms involved in FSH enhanced atherosclerosis in ovariectomized ApoE^{-/-} mice such as induction of inflammation or foam cell formation?”

c. #5 - Needs to be edited for word order.

Authors' response: We have amended our text in the revised manuscript (outstanding questions, line 11-12).

“FSH blocking increases bone mass and reduces body fat in mouse models. Can these findings be translated into humans?”

d. Other suggested outstanding questions not mentioned but could be included:

i. Potential for FSH actions outside of FSHR

ii. Importance of glycosylation state in FSH action in extragonadal tissues

Authors' response: We thank the reviewer for their suggestions. We have added these two points in our revised manuscript (outstanding questions, line 13-15).

“Are there any potential mechanisms for FSH biological activities without binding to FSHR in extragonadal tissues?”

What are the effects of glycosylation state of FSH on its actions in extragonadal tissues?”

Highlights:

Epidemiological studies have demonstrated that FSH levels are positively associated with postmenopausal osteoporosis and cardiovascular disease.

Besides gonadal tissues, FSHR is found to be expressed by a range of extragonadal sites, including osteoclasts and endothelial cells.

FSH treatment stimulates osteoclast cell formation, function and survival, which are the cells responsible for bone resorption. In addition, FSH administration significantly promotes atherosclerosis in ovariectomized ApoE^{-/-} mice by up-regulating VCAM-1 expression in human umbilical vein endothelial cells and subsequently increasing human monocyte adhesion.

Blockade of FSH with a specific antibody targeting its β -subunit enhances bone mass, reduces body fat and atherosclerosis in mouse models.

FSH represents a potential novel therapeutic target for the treatment of postmenopausal osteoporosis and cardiovascular disease.

1 **Extragonadal effects of follicle-stimulating hormone on osteoporosis and**
2 **cardiovascular disease in women with menopausal transition**

3

4 **Short title:** The pathological roles of FSH in women with menopausal transition

5

6 Dongxing Zhu¹, Xiaosa Li¹, Vicky E Macrae^{2*}, Tommaso Simoncini^{3*}, Xiaodong Fu^{1*}

7

8 1. Guangzhou Institute of Cardiovascular Disease, The Second Affiliated Hospital;
9 Key Laboratory of Cardiovascular Diseases, School of Basic Medical Sciences,
10 Guangzhou Medical University, Guangzhou 511436, China.

11 2. The Roslin Institute and Royal (Dick) School of Veterinary Studies, University of
12 Edinburgh, Easter Bush Campus, Midlothian EH25 9RG, UK

13 3. Molecular and Cellular Gynecological Endocrinology Laboratory (MCGEL),
14 Department of Reproductive Medicine and Child Development, University of Pisa,
15 Pisa 56100, Italy.

16

17 *Correspondence: fuxiaod@gzhmu.edu.cn (X.D. Fu), t.simoncini@obgyn.med.unipi.it
18 (T. Simoncini) and vicky.macrae@roslin.ed.ac.uk (V.E. Macrae).

19

20 **Corresponding authors' laboratory website:**

21 X.D. Fu: <https://orcid.org/0000-0003-2754-8976>

22 T. Simoncini: <http://tommasosimoncini.it/ginecologia-funzionale/?lang=en>

23 V.E Macrae: <https://www.ed.ac.uk/roslin/about/contact-us/staff/vicky-macrae>

24

25

26 **Keywords:**

27 Follicular Stimulating Hormone/Postmenopause/Osteoporosis/Cardiovascular
28 disease/Extragonadal effects

29

30

31 **ABSTRACT:**

32 The risk of osteoporosis and cardiovascular disease increases significantly in
33 postmenopausal women. Until recently, the underlying mechanisms have been
34 primarily attributed to estrogen decline following the menopause. However, FSH levels
35 rise sharply during menopausal transition and **are maintained** at elevated levels for
36 many years. **FSHR** has been detected in various extragonadal sites, including
37 osteoclasts and endothelial cells. Recent advances show that FSH may also contribute
38 to postmenopausal osteoporosis and cardiovascular disease. **We review here the key**
39 **actions through which FSH could contribute to the development of osteoporosis and**
40 **cardiovascular disease in women as they transition through the menopause.** Advancing
41 our understanding of the precise mechanisms through which FSH promotes
42 osteoporosis and cardiovascular disease may provide new opportunities for improving
43 **quality of life** for postmenopausal women.

44

45

46

47

48

49

50

51

52

53

54

55

56

57

58

59

60

61 **Introduction**

62 During menopausal transition, women undergo irregular menstruation or infrequent
63 menses, with the permanent cessation of menstrual cycle due to depletion of viable
64 follicles [1]. The length of menopausal transition is highly variable, ranging from 3-9
65 years in women aged around 45–55 years old. Menopausal transition is associated with
66 alterations in hormone profiles. The two well established hormonal profiles are (1) a
67 marked decline in estradiol and (2) a notable rise in follicle-stimulating hormone (FSH).
68 The Study of Women's Health Across the Nation (SWAN), the most comprehensive
69 U.S. study to date, followed premenopausal women over the menopause transition.
70 Previous studies examined 1,215 SWAN participants who transitioned through the
71 menopause over time and reported that FSH levels increased as early as 6 years before
72 the final menstrual period (FMP) and stabilized 2 years after the FMP. Estrogen levels
73 declined until 2 years before the FMP and stabilized after 2 years around the FMP [2]
74 (Figure 1). Across the menopausal transition, serum levels of FSH increased from 15.15
75 mIU/mL to 98.21 mIU/mL, while serum levels of estradiol dropped from 60.26 pg/ml
76 to 19.12 pg/ml [2].

77

78 Osteoporosis is defined as a skeletal disease with a significant reduction in bone mineral
79 density and an associated increased risk of bone fracture [3]. Menopause is widely
80 recognized as a risk factor for osteoporosis and bone fracture in women's later life. It
81 has been reported that bone loss accelerates during the late stage of menopausal
82 transition and continues into old age [4-6]. A large cohort of UK women study has
83 shown that the relative risk (RR) of hip fracture in postmenopausal women is
84 significantly higher than in premenopausal women with similar age (adjusted RR 2.22,
85 95% confidence interval [CI] 1.22–4.04; p=0.009) [7]. Menopause is also thought to
86 be a risk factor for cardiovascular disease in women. The Framingham Heart Study
87 reported that postmenopausal women aged 50–59 years had 4 times the 10-year
88 incidence of coronary heart disease as premenopausal women of similar age, but results
89 were not adjusted for age or smoking [8]. The Nurses' Health Study reported that
90 women who had undergone bilateral oophorectomy showed an increased risk of

91 coronary heart disease compared to premenopausal women (rate ratio, 2.2; 95 percent
92 confidence limits, 1.2 and 4.2) [9]. Interestingly, recent studies have reported elevated
93 risk factors for cardiovascular disease including body fat composition [10], lipids and
94 lipoprotein [11], and vascular remodeling [12-13] in women transitioning through the
95 menopause. Increased susceptibility to osteoporosis and cardiovascular disease in
96 **postmenopausal** (see Glossary) women may be associated with changes in their
97 hormone levels.

98

99 **The role of FSH in gonadal development and beyond**

100 FSH belongs to the pituitary glycoprotein hormone family, which also includes
101 luteinizing hormone (LH), chorionic gonadotropin and thyroid-stimulating hormone.
102 These four hormones share a common α subunit, which forms a functional heterodimer
103 with a hormone-specific β subunit. FSH primarily exerts its biological function through
104 binding to the FSH receptor (FSHR), which is predominantly expressed by granulosa
105 cells in the ovary and sertoli cells in the testes, respectively [14]. **Similar to other**
106 **glycoprotein hormones, glycosylation of FSH plays an important role in regulating its**
107 **activity [15] (see Box1).** Classically, FSH plays an essential role in gonadal
108 development, maturation and function. In females, it promotes growth and maturation
109 of ovarian follicles and estrogen production, whereas in males it supports
110 spermatogenesis [23]. **Through binding to FSHR coupled with different partners, FSH**
111 **activates multiple downstream signaling pathways (see Box2, Figure 2).**

112

113 Expression of FSHR determines the targets and extent of its biological action.
114 Traditionally, FSHR is considered to be gonad-specific. **A number of reports have**
115 **recently demonstrated that it is also expressed in a range of extragonadal sites, including**
116 **human osteoclasts [31] and monocytes [32], tumor vasculature and metastases [33], the**
117 **liver [34] and human umbilical vein endothelial cells (HUVECs) [35, 36], although**
118 **other independent investigators have not been successful in reproducing the original**
119 **experiments conducted in HUVECs [37].** These data have prompted researchers to
120 study the extragonadal effects of FSH and in particular its potential actions in

121 postmenopausal women, who show increased risk of osteoporosis and cardiovascular
122 disease. The decline of estrogen across the period of **menopausal transition** has
123 previously been considered as a major contributor of postmenopausal osteoporosis and
124 cardiovascular disease [38, 39], however recent studies suggest that FSH may also play
125 an important role. In the present review, we will discuss the latest insights into the
126 potential pathological roles of FSH in menopausal women that exceed its classical
127 gonadal regulatory role and examine the underlying mechanisms through which FSH
128 may promote osteoporosis and cardiovascular disease.

129

130 **FSH and the risk of osteoporosis**

131 Postmenopausal women are the majority of patients who suffer from osteoporosis.
132 Estrogen deficiency has long been considered as a major contributor of postmenopausal
133 osteoporosis [40]. However, it has been reported that bone loss occurs around 2–3 years
134 before the FMP [41], when estrogen levels are relatively normal while FSH levels are
135 significantly elevated (Figure 1). In addition, previous cross-sectional [42] and
136 longitudinal [43] studies have shown that higher serum FSH levels but not lower serum
137 estradiol levels are associated with lower bone mineral density among pre- and early
138 perimenopausal women enrolled in SWAN. Thus, estrogen deficiency cannot fully
139 explain postmenopausal osteoporosis and FSH may play additional roles in bone loss
140 during menopause.

141

142 Several observational studies have confirmed the association between FSH levels and
143 bone metabolism. A small cohort study has shown that women with hypergonadotropic
144 **amenorrhea** (mean FSH>40 mIU/mL) have lower lumbar spine bone density than
145 those with hypogonadotropic amenorrhea (mean FSH<40 mIU/mL), with comparable
146 estrogen levels between the two groups. In addition, only FSH levels were negatively
147 correlated with lumbar spine bone density in hypergonadotropic amenorrheic women,
148 after adjustment for age and body mass index (BMI) [44]. Furthermore, previous studies
149 investigated 2,375 pre and early perimenopausal women from SWAN and found that
150 higher FSH concentrations were associated with elevated concentrations of the bone

151 resorption marker urinary N-telopeptide of type I collagen (NTx), after adjustment for
152 BMI, thyroid disease, insulin sensitivity, difficulty in paying for basics, race/ethnicity,
153 seasonality and site. Higher FSH concentrations were also associated with higher
154 osteocalcin concentrations (bone formation maker), after adjustment for smoking,
155 physical activity, physical functioning, BMI, diabetes, insulin sensitivity, thyroid
156 disease, race and site [45]. A significant association between bone loss and high serum
157 FSH has also been reported in Chinese women [46, 47]. Unexpectedly, Gourlay *et al*
158 have reported that neither FSH nor estrogen shows a strong correlation with bone mass
159 in younger postmenopausal women [48]. These data may be due to the relative small
160 size of patient cohorts and/or study designs. Taken together, these data suggest that FSH
161 is a marker for bone loss in women during menopausal transition, and may directly
162 promote bone resorption.

163

164 The underlying mechanisms through which osteoporosis occurs is primarily determined
165 by an imbalance between bone formation and bone resorption [49]. Osteoclasts are the
166 cells responsible for bone resorption. Sun *et al* reported increased bone mass and
167 decreased osteoclastic resorption in haploinsufficient *FSHβ^{+/-}* mice with normal ovarian
168 function yet 50% reduction in serum FSH levels [50], suggesting that the effect of FSH
169 on bone is estrogen independent. Further studies reported that FSH activates MEK/Erk,
170 NF-κB, and Akt signaling pathways through a Gi2α protein-coupled FSHR and directly
171 accelerates osteoclast formation, function and survival [50-52]. Additionally, FSH also
172 indirectly stimulates osteoclast formation by inducing inflammatory cytokine release
173 by immune cells, such as IL-1β, IL-6 and TNF-α [53, 54] (Figure 3). Indeed, Iqbal *et al*
174 found that FSH stimulated bone marrow granulocytes and macrophages to release TNF-
175 α, which expanded the number of bone marrow osteoclast precursors and enhanced
176 osteoblast formation, subsequently leading to the high turn-over bone loss [53]. Having
177 noted the potential role of FSH in postmenopausal bone loss, several studies have been
178 performed to test whether the specific inhibition of FSH can prevent ovariectomy-
179 induced bone loss in mouse models. Indeed, blocking FSH with a specific antibody
180 targeting its β-subunit increases bone mass and reduces body fat in mouse models [55,

181 56]. Interestingly, further studies have shown that serum levels of FSH are positively
182 correlated with the bone resorption marker CTX and the bone formation marker
183 osteocalcin in healthy postmenopausal women [57], indicating a potential role of FSH
184 in bone turnover. In addition, a significantly positive association between FSH and CTX
185 has also been reported in osteoporotic Chinese women during the menopausal transition
186 [58]. These studies suggest that targeting FSH may be a potential therapeutic target for
187 the clinical treatment and management of postmenopausal osteoporosis and obesity.

188

189 **FSH and the risk for cardiovascular disease**

190 Until recently, it has been widely accepted that the risk of cardiovascular disease
191 significantly increases in postmenopausal women, with the reduction in estrogen levels
192 associated with menopausal transition considered to be a major contributor [59].

193 Whether estrogen replacement therapy could reduce cardiovascular disease remains
194 ambiguous. Previous studies have shown that estrogen replacement therapy at standard
195 daily dose of 0.625mg or less decreases cardiovascular disease risk in postmenopausal
196 women without previous history of heart disease. However, estrogen at a higher daily
197 dose of 0.625mg or more and in combination with progestin may modestly increase the
198 risk for stroke [60, 61]. Recent clinical trials have demonstrated that menopausal
199 hormone therapy for 5 to 7 years is not associated with risk of all-cause, cardiovascular,
200 or cancer mortality among 27,347 postmenopausal women aged 50 to 79 years during
201 a cumulative follow-up of 18 years [62]. In contrast to the decline in estrogen levels
202 observed during menopausal transition, FSH levels rise sharply and may also contribute
203 to increased risk of cardiovascular disease following the menopause (Figure 1). Several
204 previous studies have examined associations between FSH levels and subclinical
205 atherosclerosis including coronary artery calcium and the carotid intima-media
206 thickness (IMT) in women, with the majority of them reporting a positive correlation
207 [63-65]. However, in contrast with this observation, a recent study which included
208 2,658 Chinese postmenopausal women showed that serum FSH levels were negatively
209 associated with 10-year risk of cardiovascular disease [66]. Such differences are likely
210 related to distinct patient cohorts, baseline eligibility criteria, race, age and experimental

211 designs. Interestingly, a recent SWAN study evaluated the impact of the entire midlife
212 course of hormonal trajectories on the risk of atherosclerosis after menopause, which
213 suggested that women with a lower FSH rise over their menopause transition may be at
214 lower risk of atherosclerosis than those with a medium or high FSH rises [67]. This
215 study suggests that it may be much more important to examine the correlation between
216 FSH trajectory and cardiovascular disease and osteoporosis, rather than ascribe risk to
217 a single assessment of hormone at a single time point.

218

219 **Potential mechanisms by which FSH increases risk of cardiovascular disease**

220 FSH may increase risk of cardiovascular disease through a number of distinct
221 mechanisms (Figure 4):

222 *Effects of FSH on endothelial cell activation and atherosclerosis*

223 Endothelial cell activation by oxidized lipids and pro-inflammatory stimuli plays an
224 important role in the initiation and progression of atherosclerosis. Activated endothelial
225 cells express a variety of adhesion molecules such ICAM-1 and VCAM-1, which
226 recruits leukocytes to the endothelium [68]. Our recent report demonstrated for the first
227 time that FSH directly accelerates atherosclerosis in ovariectomized *ApoE^{-/-}* mice,
228 independent of estrogen deficiency. Mechanistically, FSH up-regulated VCAM-1
229 expression in human umbilical vein endothelial cells and subsequently increased human
230 monocyte adhesion through FSHR/G α s/cAMP/PKA and PI3K/Akt/mTOR/NF- κ B
231 signaling pathways. Interestingly, FSHR was specifically localized in **caveolae** of
232 endothelial cells. Caveolin-1, the main protein component of caveolae, directly
233 interacted with FSHR and mediated its downstream signaling actions [36].

234

235 *FSH accelerates adiposity and lipid accumulation*

236 Cui *et al* recently reported that FSH treatment increases the weight of abdominal fat
237 and lipid accumulation of adipocytes in chickens, through enhancing the expression of
238 genes in the fatty acid metabolism pathway, retinol metabolism pathway, and
239 peroxisome proliferator-activated receptor (PPAR) signaling pathway [69]. Further
240 studies showed that FSHR was functionally expressed in human and mouse fat tissues

241 and adipocytes. FSH treatment increased lipid biosynthesis, lipid droplet formation,
242 altered the secretion of leptin and adiponectin through the $G\alpha i/Ca^{2+}/CREB$ pathway in
243 mouse 3T3-L1 preadipocytes [70]. Interestingly, recent elegant studies performed by
244 Liu *et al* have shown that blockade of FSH signaling with a specific antibody reduces
245 high-fat diet-induced obesity in wild type mice and adiposity in ovariectomized mice
246 [55]. Specifically, antibody-treated mice showed significantly reduced total (TFV),
247 subcutaneous (SFV) and visceral fat volume, but interscapular brown adipose tissue
248 remained unchanged [55]. These data suggest that FSH may play an important role in
249 determining body fat distribution, which may contribute to cardiovascular dysfunction
250 [71]. Interestingly, it has been shown that serum FSH levels are positively associated
251 with serum total cholesterol and LDL-C levels in Chinese postmenopausal women [34].
252 FSH administration in ovariectomized mice promotes dyslipidemia through inhibiting
253 hepatic cholesterol metabolism. Mechanistically, FSH reduces LDLR levels in
254 hepatocytes and attenuates the endocytosis of LDL-C, leading to an elevated circulating
255 LDL-C level [34], which is an independent risk factor for atherosclerosis. Taken
256 together, these studies suggest that FSH may increase risk factors for cardiovascular
257 disease through accelerating adiposity and lipid accumulation.

258

259 *FSH promotes angiogenesis*

260 Angiogenesis inhibition through the application of endostatin or TNP-470 has been
261 shown to decrease plaque formation and intimal neovascularization in $ApoE^{-/-}$ mice [72].
262 FSH signaling through FSHR in HUVECs promotes angiogenesis, which is
263 independent of VEGF [73]. Interestingly, treatment of HUVECs with FSH stimulated
264 the PI3K/AKT signaling pathway, with similar efficacy as VEGF [73]. These data
265 suggest that FSH may increase atherosclerosis through promoting angiogenesis.
266 However, the effect of FSH on angiogenesis cannot be reproduced by other
267 investigators and the discrepancy remains to be clarified [37].

268

269 *Potential role of FSH in vascular calcification.*

270 Vascular calcification is a common feature of advanced atherosclerosis and is important

271 in determining atherosclerotic plaque stability [74]. We and others have previously
272 demonstrated that vascular calcification shares many similarities to bone remodeling,
273 which involves maintaining a balance between osteoblasts and osteoclasts [75-77]. The
274 presence of osteoclast-like cells and active resorption of ectopic mineral deposition
275 have been reported in calcified atherosclerotic plaques [78]. Furthermore, monocytes
276 and macrophages are frequently observed in atherosclerotic plaque [79]. These data
277 suggest that osteoclasts, through a signaling cascade involving FSH (Figure 3) may be
278 recruited to calcified regions where they can resorb mineral deposition, subsequently
279 increasing the incidence of plaque rupture [80] (Figure 4). In addition, FSH stimulates
280 immune cells to release inflammatory cytokines [53, 54], which may also contribute to
281 vascular calcification (Figure 4).

282

283 **Clinical use and long-term safety of recombinant FSH therapies against** 284 **cardiovascular disease and osteoporosis**

285 There are currently three commercially available recombinant human FSH therapies,
286 namely Gonal-F, Puregon and Elonva. They are normally prescribed for women with
287 subfertility who require assisted reproductive technology. Whether treatment with these
288 medications has long-term safety issues is still under considerable debate. A previous
289 study showed that there is no association between successful fertility treatment using
290 FSH and increased risk of cardiovascular disease later in life [81]. However, several
291 recent studies have suggested that following fertility therapy women may have an
292 increased risk of long term adverse cardiovascular events, such as hypertension and
293 stroke [82, 83]. To our knowledge, there are no data about fertility treatment using
294 **recombinant FSH therapies** and the long-term risk of osteoporosis in women to date,
295 and requires future interrogation in the future. Given the current high demand for
296 fertility treatment, a greater understanding of the long-term risks of fertility treatment
297 is essential for the development of clinical strategies targeting osteoporosis and
298 cardiovascular risk reduction.

299

300 **Concluding remarks and future perspectives**

301 In the current review, we have highlighted our current understanding of the potential
302 pathological roles for FSH in women. Epidemiological and animal studies have
303 revealed that FSH contributes to the decline in bone health in women undergoing
304 menopausal transition. Emerging data has shown that FSH treatment enhances
305 atherosclerotic plaque formation in ovariectomized AopE^{-/-} mice [36]. However, our
306 understanding of the molecular mechanisms through which FSH increases the risk of
307 osteoporosis and cardiovascular disease is far from complete (see outstanding
308 questions). The vast technological advancements such as Next-Generation Sequencing
309 will provide valuable new information on the molecular pathophysiology of FSH in
310 extragonadal tissues, such as bone and blood vessels. Animal studies have shown that
311 blocking FSH increases bone mass, reduces body fat and induces thermogenic adipose
312 tissue. These data suggest that blocking FSH may not only be a potential opportunity
313 for treating osteoporosis, but also of benefit in the treatment of visceral fat associated
314 diseases such as metabolic syndrome and cardiovascular disease [55]. Whether FSH
315 promotes osteoporosis and cardiovascular disease in women remains to be further
316 elucidated in humans. In conclusion, a fuller understanding of the molecular
317 pathological roles of FSH for osteoporosis and cardiovascular disease in
318 postmenopausal women could have significant importance in improving diagnosis,
319 management and treatment of these major diseases.

320

321 **Acknowledgements**

322 X.F is supported by the National Natural Science Foundation (No: 81471426), the
323 Project of Department of Education of Guangdong Province (No. 2015KTSCX109).
324 V.E M is supported by funding from the Biotechnology and Biological Sciences
325 Research Council (BBSRC) in the form of an Institute Strategic Programme Grant
326 (BB/J004316/1). D.Z is supported by The Innovation Project of Department of
327 Education of Guangdong Province (No. 2017KTSCX158).

328

329

330

331

332 **References**

- 333 1. Harlow, S.D. *et al.* (2012) Executive summary of the Stages of Reproductive Aging
334 Workshop + 10: addressing the unfinished agenda of staging reproductive aging. *J.*
335 *Clin. Endocrinol. Metab.* 97, 1159-1168
- 336 2. Randolph, J.F. *et al.* (2011) Change in follicle-stimulating hormone and estradiol
337 across the menopausal transition: effect of age at the final menstrual period. *J. Clin.*
338 *Endocrinol. Metab.* 96, 746-754
- 339 3. Bruyere, O. *et al.* (2007) Relationship between bone mineral density changes and
340 fracture risk reduction in patients treated with strontium ranelate. *J. Clin.*
341 *Endocrinol. Metab.* 92, 3076-3081
- 342 4. Seifert-Klauss, V. *et al.* (2002) Bone metabolism during the perimenopausal
343 transition: a prospective study. *Maturitas.* 41, 23-33
- 344 5. Seifert-Klauss, V. *et al.* (2012) Bone loss in premenopausal, perimenopausal and
345 postmenopausal women: results of a prospective observational study over 9 years.
346 *Climacteric.* 15, 433-440
- 347 6. Rannevik, G. *et al.* (2008) A longitudinal study of the perimenopausal transition:
348 altered profiles of steroid and pituitary hormones, SHBG and bone mineral density.
349 *Maturitas.* 61, 67-77
- 350 7. Banks, E. *et al.* (2009) Hip fracture incidence in relation to age, menopausal status,
351 and age at menopause: prospective analysis. *PLoS Med.* 6, e1000181
- 352 8. Kannel, W.B. *et al.* (1976) Menopause and risk of cardiovascular disease: the
353 Framingham study. *Ann. Intern. Med.* 85, 447-452
- 354 9. Colditz, G.A. *et al.* (1987) Menopause and the risk of coronary heart disease in
355 women. *N. Engl. J. Med.* 316, 1105-1110
- 356 10. Abdunour, J. *et al.* (2012) The effect of the menopausal transition on body
357 composition and cardiometabolic risk factors: a Montreal-Ottawa New Emerging
358 Team group study. *Menopause.* 19, 760-767
- 359 11. Matthews, K.A. *et al.* (2009) Are changes in cardiovascular disease risk factors in
360 midlife women due to chronological aging or to the menopausal transition? *J. Am.*

- 361 *Coll. Cardiol.* 54, 2366-2373
- 362 12. El Khoudary, S.R. *et al.* (2013) Progression rates of carotid intima-media thickness
363 and adventitial diameter during the menopausal transition. *Menopause.* 20, 8-14
- 364 13. Mathews, L. *et al.* (2017) Coronary endothelial function is better in healthy
365 premenopausal women than in healthy older postmenopausal women and men.
366 *PLoS. One.* 12, e0186448
- 367 14. Szkudlinski, M.W. *et al.* (2002) Thyroid-stimulating hormone and thyroid-
368 stimulating hormone receptor structure-function relationships. *Physiol. Rev.* 82,
369 473-502
- 370 15. Bousfield, G.R. *et al.* (2014) Macro- and Micro-heterogeneity in Pituitary and
371 Urinary Follicle-Stimulating Hormone Glycosylation. *J. Glycomics. Lipidomics.* 4
- 372 16. Laan, M. *et al.* (2012) Pharmacogenetics of follicle-stimulating hormone action.
373 *Curr. Opin. Endocrinol. Diabetes. Obes.* 19, 220-227
- 374 17. Plant, T.M. (2008) Hypothalamic control of the pituitary-gonadal axis in higher
375 primates: key advances over the last two decades. *J. Neuroendocrinol.* 20, 719-726
- 376 18. Layman, L.C. and McDonough, P.G. (2000) Mutations of follicle stimulating
377 hormone-beta and its receptor in human and mouse: genotype/phenotype. *Mol. Cell.*
378 *Endocrinol.* 161, 9-17
- 379 19. Emanuele, M.A. and Emanuele, N.V. (1998) Alcohol's effects on male reproduction.
380 *Alcohol. Health. Res. World.* 22, 195-201
- 381 20. Burger, H.G. (1993) Evidence for a negative feedback role of inhibin in follicle
382 stimulating hormone regulation in women. *Hum. Reprod.* 8 Suppl 2, 129-132
- 383 21. Welt, C.K. *et al.* (2003) Control of follicle-stimulating hormone by estradiol and
384 the inhibins: critical role of estradiol at the hypothalamus during the luteal-
385 follicular transition. *J. Clin. Endocrinol. Metab.* 88, 1766-1771
- 386 22. Bousfield, G.R. *et al.* (2015) Comparison of Follicle-Stimulating Hormone
387 Glycosylation Microheterogeneity by Quantitative Negative Mode Nano-
388 Electrospray Mass Spectrometry of Peptide-N Glycanase-Released
389 Oligosaccharides. *J. Glycomics. Lipidomics.* 5
- 390 23. Dias, J.A. *et al.* (2002) Molecular, structural, and cellular biology of follitropin and

- 391 follitropin receptor. *Vitam. Horm.* 64, 249-322
- 392 24. Wayne, C.M. *et al.* (2007) Follicle-stimulating hormone induces multiple signaling
393 cascades: evidence that activation of Rous sarcoma oncogene, RAS, and the
394 epidermal growth factor receptor are critical for granulosa cell differentiation. *Mol.*
395 *Endocrinol.* 21, 1940-1957
- 396 25. Crepieux, P. *et al.* (2001) The ERK-dependent signalling is stage-specifically
397 modulated by FSH, during primary Sertoli cell maturation. *Oncogene.* 20, 4696-
398 4709
- 399 26. Escamilla-Hernandez, R. *et al.* (2008) Inhibition of rat granulosa cell differentiation
400 by overexpression of Galphaq. *Endocrine.* 33, 21-31
- 401 27. Tranchant, T. *et al.* (2011) Preferential beta-arrestin signalling at low receptor
402 density revealed by functional characterization of the human FSH receptor A189 V
403 mutation. *Mol. Cell. Endocrinol.* 331, 109-118
- 404 28. Nechamen, C.A. *et al.* (2004) Human follicle-stimulating hormone (FSH) receptor
405 interacts with the adaptor protein APPL1 in HEK 293 cells: potential involvement
406 of the PI3K pathway in FSH signaling. *Biol. Reprod.* 71, 629-636
- 407 29. Nechamen, C.A. *et al.* (2007) APPL1, APPL2, Akt2 and FOXO1a interact with
408 FSHR in a potential signaling complex. *Mol. Cell. Endocrinol.* 260-262, 93-99
- 409 30. Thomas, R.M. *et al.* (2011) The adapter protein APPL1 links FSH receptor to
410 inositol 1,4,5-trisphosphate production and is implicated in intracellular Ca(2+)
411 mobilization. *Endocrinology.* 152, 1691-1701
- 412 31. Sun, L. *et al.* (2010) Further evidence for direct pro-resorptive actions of FSH.
413 *Biochem. Biophys. Res. Commun.* 394, 6-11
- 414 32. Cannon, J.G. *et al.* (2011) Follicle-stimulating hormone promotes RANK
415 expression on human monocytes. *Cytokine.* 53, 141-144
- 416 33. Radu, A. *et al.* (2010) Expression of follicle-stimulating hormone receptor in tumor
417 blood vessels. *N. Engl. J. Med.* 363, 1621-1630
- 418 34. Song, Y. *et al.* (2016) Follicle-Stimulating Hormone Induces Postmenopausal
419 Dyslipidemia Through Inhibiting Hepatic Cholesterol Metabolism. *J. Clin.*
420 *Endocrinol. Metab.* 101, 254-263

- 421 35. Stillely, J.A. *et al.* (2014) Signaling through FSH receptors on human umbilical vein
422 endothelial cells promotes angiogenesis. *J. Clin. Endocrinol. Metab.* 99, E813-
423 E820
- 424 36. Li, X. *et al.* (2017) Follicular Stimulating Hormone Accelerates Atherogenesis by
425 Increasing Endothelial VCAM-1 Expression. *Theranostics.* 7, 4671-4688
- 426 37. Stelmaszewska, J. *et al.* (2016) Revisiting the expression and function of follicle-
427 stimulation hormone receptor in human umbilical vein endothelial cells. *Sci. Rep.*
428 6, 37095
- 429 38. Eastell, R. *et al.* (2016) Postmenopausal Osteoporosis. *Nat. Rev. Dis. Primers.* 2,
430 16070
- 431 39. Colafella, K.M.M. *et al.* (2018) Sex-specific differences in hypertension and
432 associated cardiovascular disease. *Nat. Rev. Nephrol.* 14, 185-201
- 433 40. Rachner, T.D. *et al.* (2011) Osteoporosis: now and the future. *Lancet.* 377, 1276-
434 1287
- 435 41. Sowers, M.R. *et al.* (2010) Amount of bone loss in relation to time around the final
436 menstrual period and follicle-stimulating hormone staging of the transmenopause.
437 *J. Clin. Endocrinol. Metab.* 95, 2155-2162
- 438 42. Sowers, M.R. *et al.* (2003) The association of endogenous hormone concentrations
439 and bone mineral density measures in pre- and perimenopausal women of four
440 ethnic groups: SWAN. *Osteoporos. Int.* 14, 44-52
- 441 43. Sowers, M.R. *et al.* (2006) Hormone predictors of bone mineral density changes
442 during the menopausal transition. *J. Clin. Endocrinol. Metab.* 91, 1261-1267
- 443 44. Devleta, B. *et al.* (2004) Hypergonadotropic amenorrhea and bone density: new
444 approach to an old problem. *J. Bone. Miner. Metab.* 22, 360-364
- 445 45. Sowers, M.R. *et al.* (2003) Endogenous hormones and bone turnover markers in
446 pre- and perimenopausal women: SWAN. *Osteoporos. Int.* 14, 191-197
- 447 46. Wu, X.Y. *et al.* (2010) Age-related changes in biochemical markers of bone
448 turnover and gonadotropin levels and their relationship among Chinese adult
449 women. *Osteoporos. Int.* 21, 275-285
- 450 47. Cheung, E. *et al.* (2011) Bone loss during menopausal transition among southern

- 451 Chinese women. *Maturitas*. 69, 50-56
- 452 48. Gourlay, M.L. *et al.* (2011) Follicle-stimulating hormone and bioavailable estradiol
453 are less important than weight and race in determining bone density in younger
454 postmenopausal women. *Osteoporos. Int.* 22, 2699-2708
- 455 49. Raisz, L.G. (2005) Pathogenesis of osteoporosis: concepts, conflicts, and prospects.
456 *J. Clin. Invest.* 115, 3318-3325
- 457 50. Sun, L. *et al.* (2006) FSH directly regulates bone mass. *Cell*. 125, 247-260
- 458 51. Robinson, L.J. *et al.* (2010) FSH-receptor isoforms and FSH-dependent gene
459 transcription in human monocytes and osteoclasts. *Biochem. Biophys. Res.*
460 *Commun.* 394, 12-17
- 461 52. Wang, J. *et al.* (2015) Follicle-Stimulating Hormone Increases the Risk of
462 Postmenopausal Osteoporosis by Stimulating Osteoclast Differentiation. *PLoS.*
463 *One.* 10, e0134986
- 464 53. Iqbal, J. *et al.* (2006) Follicle-stimulating hormone stimulates TNF production from
465 immune cells to enhance osteoblast and osteoclast formation. *Proc. Natl. Acad.*
466 *Sci. U S A.* 103, 14925-14930
- 467 54. Gertz, E.R. *et al.* (2010) Contribution of serum inflammatory markers to changes
468 in bone mineral content and density in postmenopausal women: a 1-year
469 investigation. *J. Clin. Densitom.* 13, 277-282
- 470 55. Liu, P. *et al.* (2017) Blocking FSH induces thermogenic adipose tissue and reduces
471 body fat. *Nature*. 546, 107-112
- 472 56. Ji, Y. *et al.* (2018) Epitope-specific monoclonal antibodies to FSHbeta increase bone
473 mass. *Proc. Natl. Acad. Sci. U S A.* 115, 2192-2197.
- 474 57. Garcia-Martin, A. *et al.* (2012) Role of serum FSH measurement on bone
475 resorption in postmenopausal women. *Endocrine*. 41, 302-308
- 476 58. Wang, B. *et al.* (2015) Correlation analysis for follicle-stimulating hormone and C-
477 terminal cross-linked telopeptides of type I collagen in menopausal transition women
478 with osteoporosis. *Int. J. Clin. Exp. Med.* 8, 2417-2422
- 479 59. El Khoudary, S.R. *et al.* (2012) Endogenous sex hormones impact the progression
480 of subclinical atherosclerosis in women during the menopausal transition.

- 481 *Atherosclerosis*. 225, 180-186
- 482 60. Grodstein, F. *et al.* (2000) A prospective, observational study of postmenopausal
483 hormone therapy and primary prevention of cardiovascular disease. *Ann. Intern.*
484 *Med.* 133, 933-941
- 485 61. Henderson, B.E. *et al.* (1991) Decreased mortality in users of estrogen replacement
486 therapy. *Arch. Intern. Med.* 151, 75-78
- 487 62. Manson, J.E. *et al.* (2017) Menopausal Hormone Therapy and Long-term All-
488 Cause and Cause-Specific Mortality: The Women's Health Initiative Randomized
489 Trials. *JAMA*. 318, 927-938
- 490 63. Munir, J.A. *et al.* (2012) The perimenopausal atherosclerosis transition:
491 relationships between calcified and noncalcified coronary, aortic, and carotid
492 atherosclerosis and risk factors and hormone levels. *Menopause*. 19, 10-15
- 493 64. Celestino, Catao. Da. Silva. D. *et al.* (2013) Endogenous sex hormones are not
494 associated with subclinical atherosclerosis in menopausal women. *Minerva.*
495 *Ginecol.* 65, 297-302
- 496 65. Wildman, R.P. *et al.* (2008) Associations of endogenous sex hormones with the
497 vasculature in menopausal women: the Study of Women's Health Across the Nation
498 (SWAN). *Menopause*. 15, 414-421
- 499 66. Wang, N. *et al.* (2017) Follicle-Stimulating Hormone, Its Association with
500 Cardiometabolic Risk Factors, and 10-Year Risk of Cardiovascular Disease in
501 Postmenopausal Women. *J. Am. Heart. Assoc.* 6
- 502 67. El Khoudary, S.R. *et al.* (2016) Trajectories of estradiol and follicle-stimulating
503 hormone over the menopause transition and early markers of atherosclerosis after
504 menopause. *Eur. J. Prev. Cardiol.* 23, 694-703
- 505 68. Moore, K.J. *et al.* (2013) Macrophages in atherosclerosis: a dynamic balance. *Nat.*
506 *Rev. Immunol.* 13, 709-721
- 507 69. Cui, H. *et al.* (2012) FSH stimulates lipid biosynthesis in chicken adipose tissue by
508 upregulating the expression of its receptor FSHR. *J. Lipid. Res.* 53, 909-917
- 509 70. Liu, X.M. *et al.* (2015) FSH regulates fat accumulation and redistribution in aging
510 through the Galphai/Ca(2+)/CREB pathway. *Aging. Cell.* 14, 409-420

- 511 71. Huang Cao, Z.F. *et al.* (2017) Role of Perivascular Adipose Tissue in Vascular
512 Physiology and Pathology. *Hypertension*. 69, 770-777
- 513 72. Moulton, K.S. *et al.* (1999) Angiogenesis inhibitors endostatin or TNP-470 reduce
514 intimal neovascularization and plaque growth in apolipoprotein E-deficient mice.
515 *Circulation*. 99, 1726-1732
- 516 73. Stille, J.A. *et al.* (2014) Signaling through FSH receptors on human umbilical vein
517 endothelial cells promotes angiogenesis. *J. Clin. Endocrinol. Metab.* 99, E813-
518 E820
- 519 74. Durham, A.L. *et al.* (2018) Role of smooth muscle cells in vascular calcification:
520 implications in atherosclerosis and arterial stiffness. *Cardiovasc. Res.* 114, 590-600
- 521 75. Zhu, D. *et al.* (2011) The appearance and modulation of osteocyte marker
522 expression during calcification of vascular smooth muscle cells. *PLoS. One.* 6,
523 e19595
- 524 76. Zhu, D. *et al.* (2012) Mechanisms and clinical consequences of vascular
525 calcification. *Front. Endocrinol (Lausanne)*. 3, 95
- 526 77. Collin-Osdoby, P. (2004) Regulation of vascular calcification by osteoclast
527 regulatory factors RANKL and osteoprotegerin. *Circ. Res.* 95, 1046-1057
- 528 78. Jeziorska, M. *et al.* (1998) Observations on bone formation and remodelling in
529 advanced atherosclerotic lesions of human carotid arteries. *Virchows. Arch.* 433,
530 559-565
- 531 79. Gerrity, R.G. and Naito, H.K. (1980) Ultrastructural identification of monocyte-
532 derived foam cells in fatty streak lesions. *Artery*. 8, 208-214
- 533 80. Han, K.H. *et al.* (2015) The association of bone and osteoclasts with vascular
534 calcification. *Vasc. Med.* 20, 527-533
- 535 81. Udell, J.A. *et al.* (2013) Long-term cardiovascular risk in women prescribed
536 fertility therapy. *J. Am. Coll. Cardiol.* 62, 1704-1712
- 537 82. Udell, J.A. *et al.* (2017) Failure of fertility therapy and subsequent adverse
538 cardiovascular events. *CMAJ*. 189, E391-E397
- 539 83. Dayan, N. *et al.* (2017) Cardiovascular Risk Following Fertility Therapy:
540 Systematic Review and Meta-Analysis. *J. Am. Coll. Cardiol.* 70, 1203-1213

541

542 **Additional materials**

Box1. The regulation of FSH production and its activity

FSH is composed of a common α subunit and a hormone-specific β subunit, which are non-covalently associated. It is only biologically active when these two subunits are fused together [16]. **FSH levels are strictly controlled by the hypothalamic pituitary gonadal axis and sex hormone-mediated negative feedback.** In response to gonadotropin-releasing hormone from the hypothalamus, pituitary gonadotrophs produce FSH and LH [17], **which exert their primary function** in the gonads. In the ovary, FSH stimulates the expression of aromatase, which converts androgens to estrogens and induces follicular maturation. In the testes, it acts together with testosterone to support spermatogenesis [18]. The estrogens in females and androgens in males feedback to the hypothalamus and pituitary, and suppress the production of FSH [19]. **In addition, previous studies have shown that inhibin A and B also inhibits the production of FSH in a manner of negative feedback [20, 21].** Similar to other glycoprotein hormones, FSH has various **glycosylation** variants with differential oligosaccharide composition, which contribute nearly 30% of the FSH mass and are located in both the α and β subunits [22]. Differential glycosylation of FSH modulates its function, including folding, intracellular trafficking, secretion, receptor binding, heterodimer stability and cell signaling [15].

543

544

545

546

547

548

549

550

551

Box2. FSH intracellular signaling pathways

It is now well recognized that upon FSH binding, the activated FSHR triggers a number of intracellular signaling pathways either in parallel or sequentially. Classically, upon FSH activation, FSHR functionally couples to G α s subunit and induces the cAMP/PKA signaling pathway, subsequently activating the cAMP regulatory element-binding protein (CREB) and modulating gene expression, such as aromatase and inhibin- α [24]. This canonical signaling pathway plays a key role for its biological actions inside granulosa cells in the ovary and sertoli cells in the testes. It is now clear that FSHR also involves other transduction mechanisms upon FSH binding. In recent years, a number of G α s-independent transduction mechanisms have been found. It has been reported that FSHR also couples to G α i [25], G α q [26], β -arrestins [27], Adapter protein containing the Pleckstrin homology domain, the Phosphotyrosine binding domain, and the Leucine zipper motif (APPL) [28-30]. These FSHR interacting partners enable FSH to activate alternative signaling pathways, including those mediated by distinct kinases such as inositol trisphosphate (IP3), Akt and ERK1/2. This complex signaling network triggered by FSH fine-tunes its biological action and determines the fate of target cells (Figure 2).

552

553

Glossary

Amenorrhea: the absence of a menstrual period in a woman of reproductive age.

Bone resorption: the process that osteoclasts resorb bone tissue and release the minerals.

Caveolae: the small invaginations of the plasma membrane of cells, belonging to a special type of lipid raft.

Menopausal transition (STRAW +10 Staging System: Stages -2 to -1) [ref. 1]

Early menopausal transition (Stage -2): Criteria include increased variability in menstrual cycle length, a persistent difference of 7 days or more in the length of consecutive cycles, elevated but variable FSH levels, low antimüllerian hormone and antral follicle count.

Late menopausal transition (Stage -1): Criteria include the occurrence of amenorrhea of 60 days or longer, elevated FSH levels greater than 25 mIU/mL, low antimüllerian hormone and antral follicle count, and vasomotor symptoms (likely).

Perimenopause (STRAW +10 Staging System: stage -2 to +1a): the time around menopause and begins at Stage -2 and ends 12 months after the final menstrual period (Stage +1a).

Postmenopause (STRAW +10 Staging System: Stage +1a, +1b, +1c, +2): The time after the final menstrual period.

554

555

556

557 **Figure legends**

558 **Figure 1. Ovarian hormonal changes in perimenopause.** With transition into
559 menopause, FSH increases markedly and estrogen declines. In postmenopausal women,
560 estrogen levels are low, and FSH levels remain high for several years [2]. This graph is
561 intended to show the trends of changes in FSH and Estrogen levels and do not stand for
562 absolute amounts.

563

564 **Figure 2. Multiple intracellular signaling pathways induced by FSH.** Classically,
565 upon FSH binding, the activated FSHR induces canonical Gas/cAMP/PKA signaling
566 pathway, which subsequently activates CREB and regulates target gene expression.
567 FSHR also activates its downstream signaling pathways through other Gas-independent
568 transduction mechanisms mainly coupling to other G α subunits, β -arrestin-dependent
569 signaling, EGFR transactivation, and APPL1-mediated signals [24-30].

570

571 **Figure 3. FSH accelerates bone resorption through increasing osteoclast formation.**
572 FSH directly enhances RANK expression in monocytes [50-52]. RANKL released by
573 osteoblasts or T cells binds to RANK in monocytes and promotes osteoclasts formation.
574 FSH also stimulates monocytes and macrophages to release inflammatory cytokines
575 such as TNF α , IL1 β and IL6 [53-54]. These inflammatory cytokines stimulate
576 osteoblasts and T cells to secrete RANKL, which promotes osteoclasts formation.
577 Osteoclasts are the cells responsible for bone resorption, and osteoblasts are the cells
578 for bone formation. Increased ration of osteoclasts to osteoblasts leads to bone mineral
579 loss, which may subsequently cause osteoporosis [49].

580

581 **Figure 4. The potential mechanisms through which FSH accelerates**
582 **atherosclerosis.** FSHR is expressed by endothelial cells. FSH induces the expression
583 of vascular cell adhesion molecule 1 (VCAM-1), which recruits monocytes from
584 circulation [36]. The recruited monocytes migrate and differentiate into macrophages.
585 Lipid accumulates within these macrophages, leading to foam cell formation.
586 Macrophage-derived foam cells contribute to the initiation, development and

587 progression of atherosclerosis. In addition, the recruited monocytes may also
588 differentiate into osteoclasts, which can resorb the calcified region and contribute to
589 plaque instability. Moreover, FSH may stimulate monocytes and T cells to release
590 inflammatory cytokines such as $TNF\alpha$, $IL1\beta$, $IL6$ [53-54], leading to chronic
591 inflammation, which may promote atherosclerosis and vascular calcification.
592

Outstanding questions

Do other bone or vascular cells express FSHR, such as osteoblasts, osteocytes, vascular smooth muscle cells, adventitial cells and cardiomyocytes? What are the effects of FSH on these cells?

Are there any other downstream genes or signaling pathways activated by FSH in bone cells or cardiovascular cells responsible for its effects on osteoporosis and cardiovascular disease?

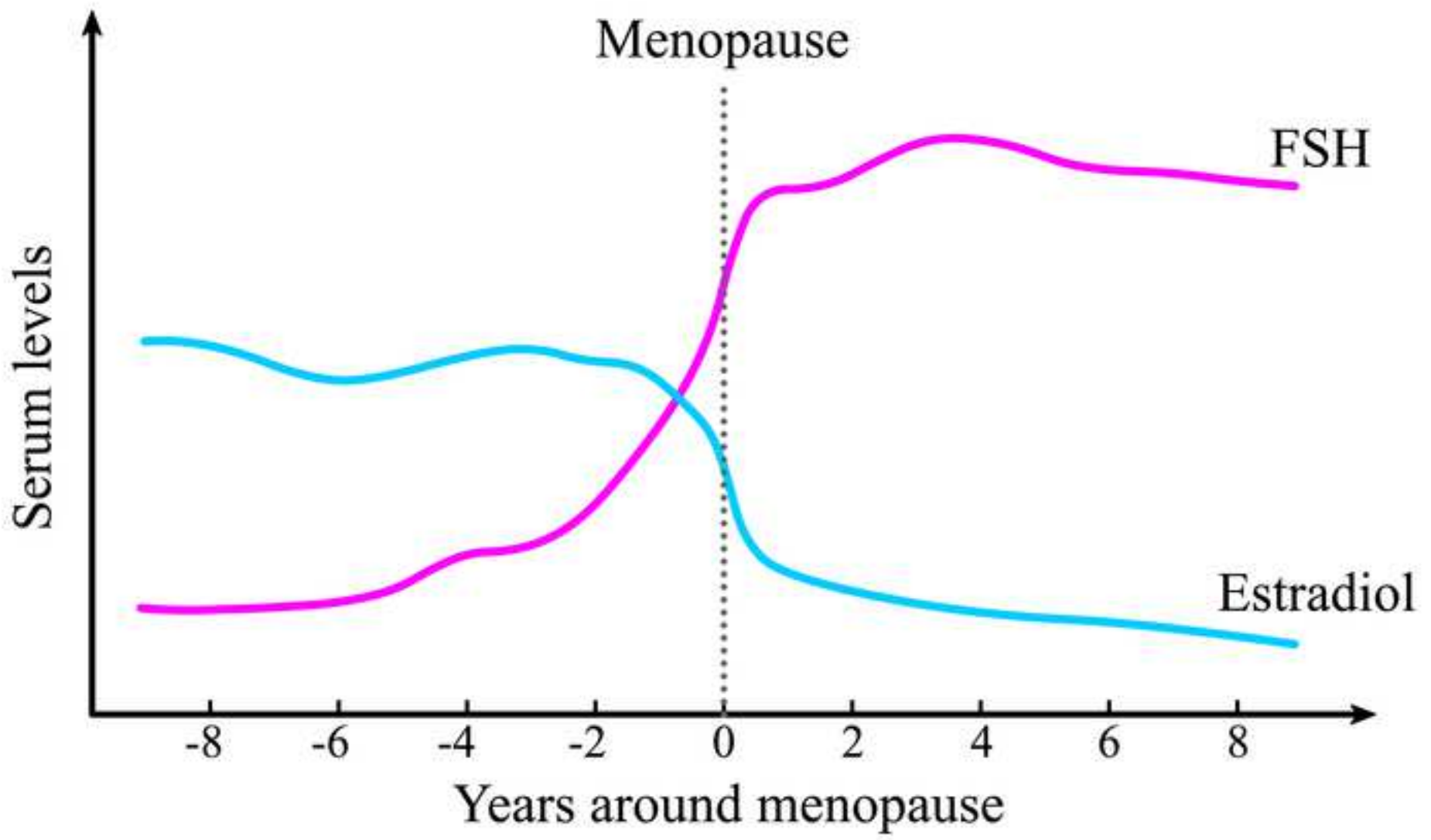
Do osteoclast or vascular endothelial cell specific FSHR conditional knockout mice demonstrate improved bone and vascular health?

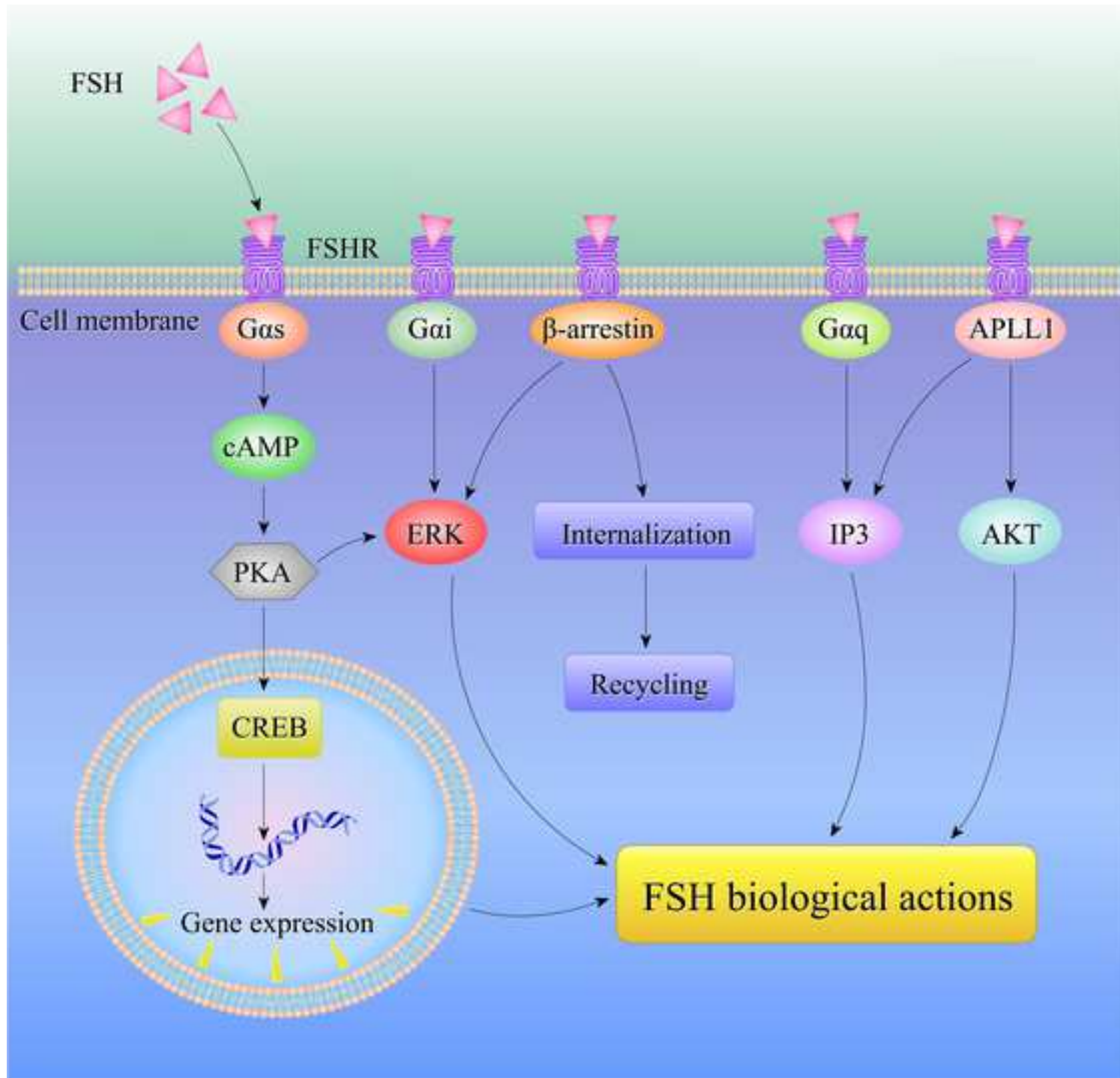
Are there any other mechanisms involved in FSH enhanced atherosclerosis in ovariectomized ApoE^{-/-} mice such as induction of inflammation or foam cell formation?

FSH blocking increases bone mass and reduces body fat in mouse models. Can these findings be translated into humans?

Are there any potential mechanisms for FSH biological activities without binding to FSHR in extragonadal tissues?

What are the effects of glycosylation state of FSH on its actions in extragonadal tissues?





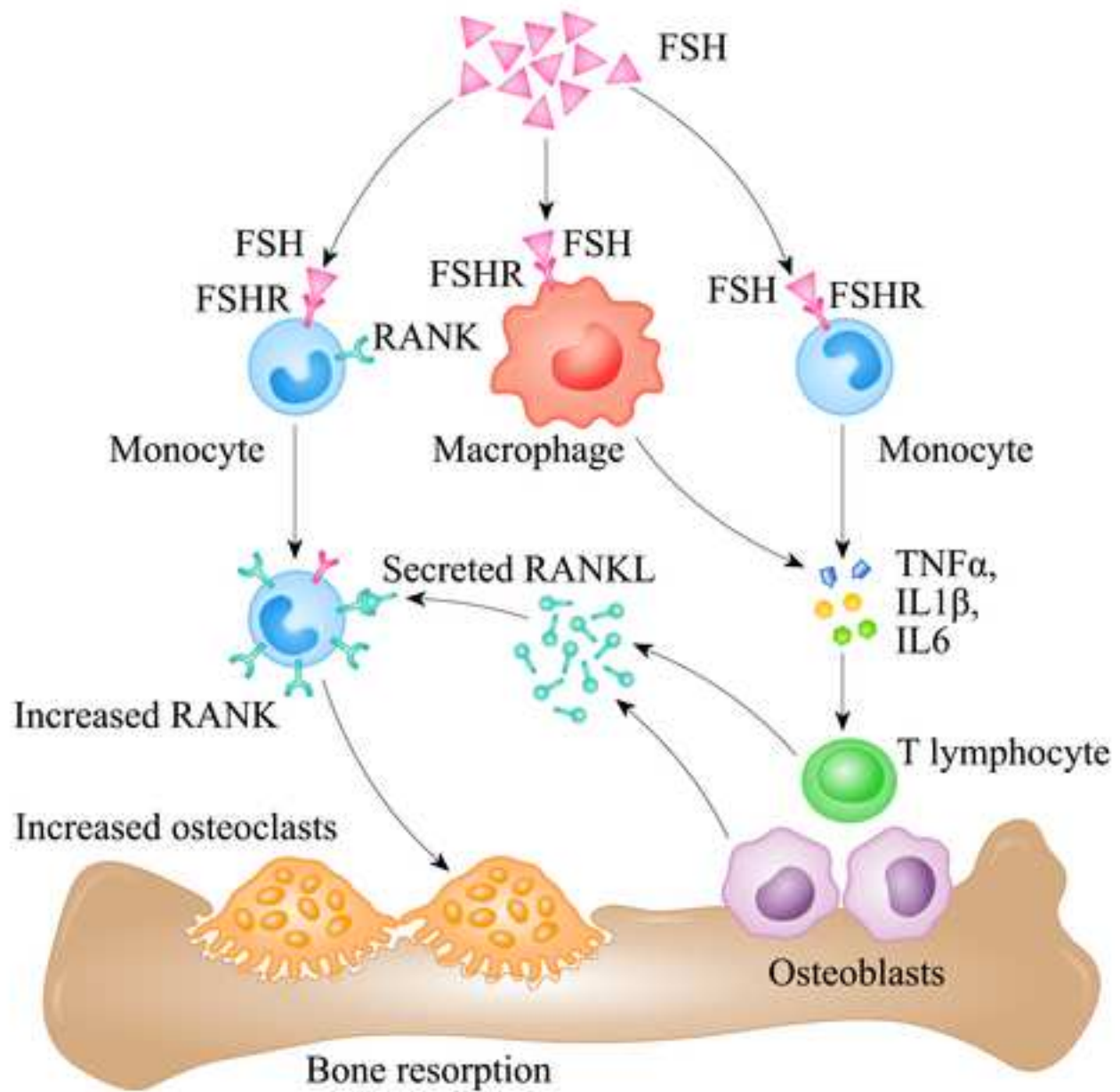
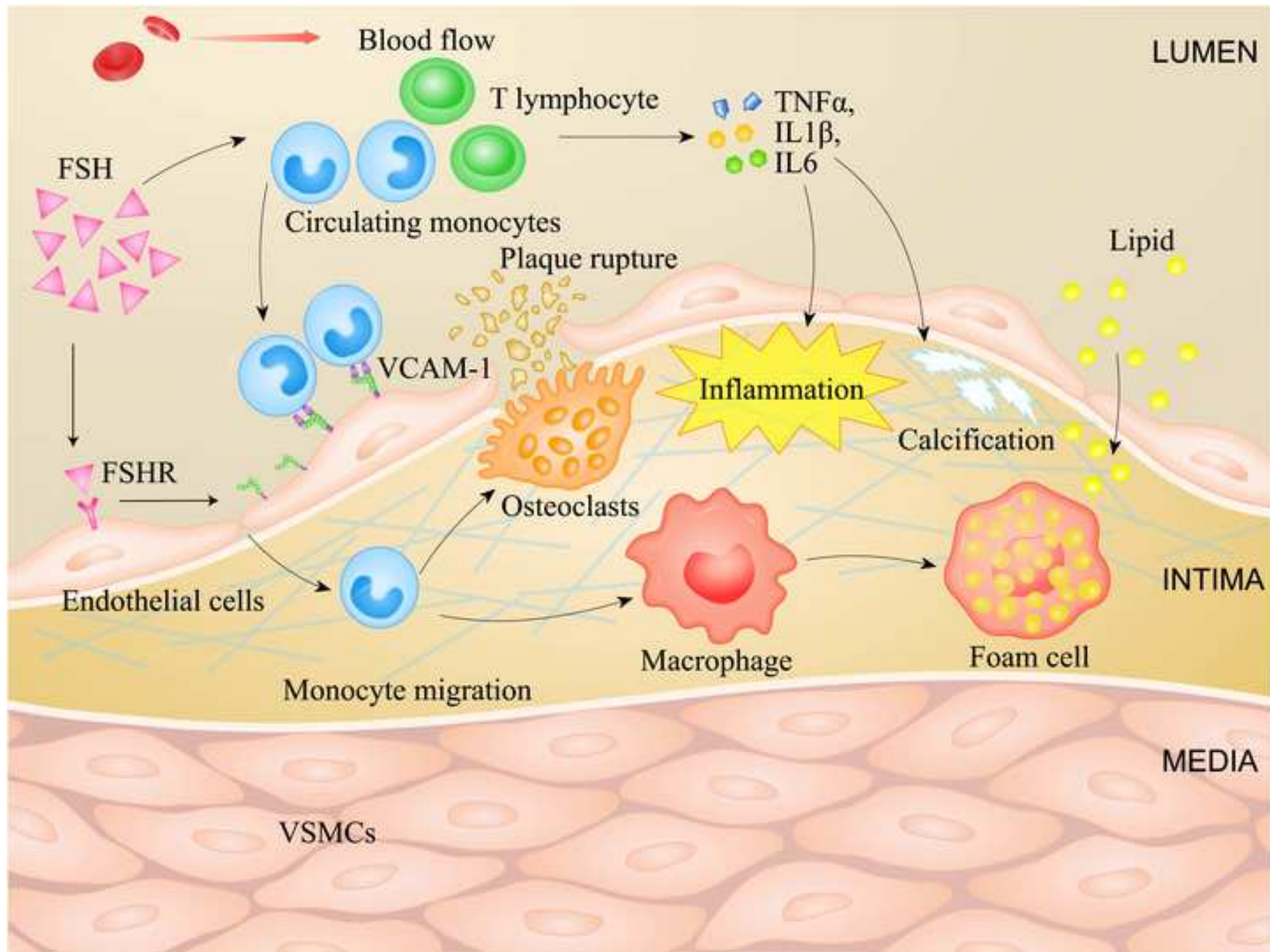
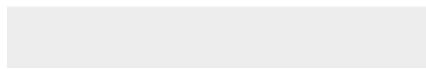


Figure 4





Click here to access/download
Figure360
renamed_38828.wmv





Click here to access/download
Original Figure File
figure1.eps



Click here to access/download
Original Figure File
figure2.eps





Click here to access/download
Original Figure File
figure-4-revised.eps



[Click here to access/download](#)

Author Supplementary Material

TEM-D-18-00111_complete manuscript.pdf

