



# THE UNIVERSITY *of* EDINBURGH

## Edinburgh Research Explorer

### **Combinatorial Delivery of Bioactive Molecules by a Nanoparticle-Decorated and Functionalized Biodegradable Scaffold**

**Citation for published version:**

Czekanska, E, Geng, J, Glinka, M, White, K, Kanczler, JM, Evans, ND, Oreffo, RO & Bradley, M 2018, 'Combinatorial Delivery of Bioactive Molecules by a Nanoparticle-Decorated and Functionalized Biodegradable Scaffold', *Journal of Materials Chemistry B: Materials for biology and medicine*.  
<https://doi.org/10.1039/C8TB00474A>

**Digital Object Identifier (DOI):**

[10.1039/C8TB00474A](https://doi.org/10.1039/C8TB00474A)

**Link:**

[Link to publication record in Edinburgh Research Explorer](#)

**Document Version:**

Peer reviewed version

**Published In:**

Journal of Materials Chemistry B: Materials for biology and medicine

**General rights**

Copyright for the publications made accessible via the Edinburgh Research Explorer is retained by the author(s) and / or other copyright owners and it is a condition of accessing these publications that users recognise and abide by the legal requirements associated with these rights.

**Take down policy**

The University of Edinburgh has made every reasonable effort to ensure that Edinburgh Research Explorer content complies with UK legislation. If you believe that the public display of this file breaches copyright please contact [openaccess@ed.ac.uk](mailto:openaccess@ed.ac.uk) providing details, and we will remove access to the work immediately and investigate your claim.



## **Combinatorial Delivery of Bioactive Molecules by a Nanoparticle-Decorated and Functionalized Biodegradable Scaffold**

Ewa M. Czekanska<sup>†a</sup>, Jin Geng<sup>†b</sup>, Michael Glinka<sup>a</sup>, Kate White<sup>a</sup>, Janos Kanczler<sup>a</sup>, Nicholas D Evans<sup>a</sup>, Richard O. C. Oreffo<sup>\*a</sup>, Mark Bradley<sup>\*b</sup>

### **Affiliations**

a. Bone and Joint Research Group, Centre for Human Development, Stem Cells and Regeneration, Faculty of Medicine, Southampton University, Southampton, SO16 6YD, UK. Email: Richard.Oreffo@soton.ac.uk.

b. School of Chemistry, University of Edinburgh, Edinburgh, EH9 3FJ, UK. Email: mark.bradley@ed.ac.uk.

† These authors contributed equally

### **Abstract**

The combination of supportive biomaterials and bioactive factors to stimulate endogenous progenitor cells is of key interest for the treatment of conditions in which intrinsic bone healing capacities are compromised. To address this need a “scaffold-decoration platform” was developed in which a biocompatible, biotin-functionalised 3D structural polymer network was generated through a solvent blending process, and used to recruit avidin modified nanoparticles within its 3D structure through biotin-avidin conjugation. This was enabled via the generation of a suite of poly(lactic-co-glycolic acid) (PLGA) nanoparticles, encapsulating two bioactive factors, vascular endothelial growth factor (VEGF) and L-Ascorbic acid 2-phosphate (AA2P) and conjugated to streptavidin to allow attachment to the bone generating scaffold. The levels of encapsulated and released VEGF and AA2P were tailored to fall within the desired range to promote biological activity as confirmed by an increase in endothelial cell tubule formation and collagen production by osteoblast cells in response to nanoparticle release of VEGF and AA2P, respectively. The release of VEGF from the scaffolds produced a significant effect on vasculature development within the chick chorioallantoic membrane (CAM) angiogenic assay. Similarly, the scaffolds showed strong biological effects in *ex vivo* assays indicating the potential of this platform for localised delivery of bioactive molecules with applications in both hard and soft tissue engineering.

## Introduction

The current paradigm for tissue engineering consist of 3 elements, (i) cells, (ii) an appropriate scaffold and, (iii) conditioning of the cells and scaffolds with appropriate mechanical forces and factors to create a tissue equivalent *in vivo* like environment.<sup>1,2</sup>

Following severe bone trauma or bone loss as a consequence of ageing or pathological conditions, the application of tissue engineering and regenerative medicine has come to the fore with the aspiration to aid bone regeneration and health and, ultimately, to restore the anatomical function and structure of bone. A central requirement in such situations is the ability to support the function of the cells present in bone to produce extracellular matrix essential for mineral deposition as well as to support the development of blood vessels<sup>3</sup>. It has long been known that the processes of angiogenesis and osteogenesis in bone are closely interrelated and pivotal in bone development, growth and regeneration.<sup>4</sup> The current principles of bone regeneration places vasculature formation as a critical factor for successful bone healing with the lack of vasculature the main cause of delayed union or non-union.<sup>5,6</sup> Vasculature endothelial growth factor (VEGF) is essential for vasculature formation by endothelial cells and influences the proliferation and differentiation of bone-forming cells.<sup>7-10</sup> Furthermore, the function of bone cells is exquisitely regulated through interaction with the collagenous extracellular matrix (ECM) including interactions with the central bone organic component, collagen, the formation of which, in turn, is regulated by ascorbic acid.<sup>11,12</sup>

The copolymer poly(lactic-co-glycolic acid) (PLGA) has received considerable attention as a delivery system given its excellent biocompatibility, high safety profile, and the Federal Drug Administration approval of PLGA for use in drug delivery.<sup>13-16</sup> In addition, PLGA is typically degraded into oligomers and individual monomers, which are natural metabolites.<sup>17</sup> Previous studies have shown the efficacious nature of PLGA to allow the delivery of proteins in comparison to free protein.<sup>18,19</sup>

The encapsulation of bioactive substances within particles at the nanometre scale confers several advantages over microparticle encapsulation, including a reduced risk of embolisation and enhanced rates of release due to large surface area to volume ratios.<sup>20,21</sup> VEGF delivery via PLGA nanoparticles (PLGA NP) has already shown promise in encouraging blood vessel growth in tissue engineering and cardiovascular medicine applications.<sup>22</sup> It however important to ensure that the delivered biologically active molecules are released at the site of tissue repair for extended periods of time, while retaining biological activity over this timeframe. Strategies such as integrating nanoparticle into polymeric hydrogels<sup>23,24</sup> and bioactive glass scaffolds<sup>25,26</sup> have been developed to support controlled delivery of bioactive molecules. A co-delivery system for VEGF and basic FGF, loaded PLGA nanoparticles incorporated within a hydrogel has been reported by Jiang and colleagues to enhance tissue regeneration.<sup>27</sup> Li and co-workers have shown the delivery of BSA-encapsulated BMP2 and dexamethasone within

a polymeric nanofiber scaffold *in vivo* resulting in increased new bone formation compared to blank scaffolds.<sup>28</sup> We hypothesised that scaffolds decorated with nanoparticles presented on the scaffold surface would provide an attractive and accessible delivery platform for cells with a stable delivery system and high local concentrations being supported by nanoparticle retention.

In our previous work, ternary mixtures of natural and synthetic polymer blends displayed promising potential as a bone tissue engineering matrix for bone regeneration.<sup>29</sup> In this study, PLGA-based nanoparticles containing VEGF and ascorbate were individually prepared and evaluated to determine their efficiency of release *in vitro*. Subsequently the nanoparticles were combined with a biotin-tagged polymer-blend scaffold to allow linkage of the avidin-loaded nanoparticles onto the biotin-conjugated scaffold thus allowing stable and controlled release of two bioactive molecules. This was examined *in vivo* using the chick chorioallantoic angiogenic membrane assay.

## **Results and Discussion**

### **Preparation of polymer scaffolds functionalised with nanoparticles**

The current studies demonstrate that the combination of nanoparticle containing bioactive molecules within biotin-tagged polymer-blend scaffolds provides a platform for the localised, and spatial, delivery of bioactive molecules with applications in both hard and soft tissue engineering.

NHS–palmitic acid was conjugated to free amino groups on avidin (0.1 equivalent to palmitic acid) producing a stable amide linkage and rendering the protein hydrophobic while the presence of 2% (w/v) deoxycholate prevented palmitate vesicle formation (Fig. 1A). Biotinylated polymers were generated by treating biotin with triethylamine and *N*, *N*'-Disuccinimidyl carbonate at room temperature for 16 hours, followed by the addition of polyethyleneimine (PEI) to the mixture and subsequent PEI-biotin isolation (Fig 1B). Based on the proton NMR of PEI-biotin (see Figure S1), around 14 biotin units were attached per PEI unit. PLGA NPs loaded with VEGF and AA2P were prepared using a double emulsion method in the presence of avidin-palmitate allowing the hydrophobic chain to embed into the PLGA nanoparticles. Particle size analysis confirmed their submicron size and indicated a relatively narrow particle size distribution (637-682 nm) with only minor changes in particle size when loaded with different cargos. The PLGA nanoparticles displayed Zeta-potentials ranging from -20.3 mV to -32.1 mV, which can be attributed to the presence of carboxylate groups on the surface of the nanoparticle, due to the use of acid terminated PLGA polymers (Table 1).

A polymer blend was generated by encompassing a number of biodegradable polymers, chitosan (CS), poly-L-lactide (PLLA) and polyvinyl acetate (PVAc) (Figure 2A), based on our

previous reported work.<sup>29</sup> To generate biotin functionalised polymer scaffolds while retaining the cellular binding affinity, a low percentage of PEI-biotin was used in the polymer blends (PLLA/PVAc/CS/PEI-biotin, 25/25/10/2, w/w). The biotin modified polymer scaffolds were fabricated by solvent blending PEI-biotin with CS, PLLA and PVAc followed by freeze-drying (see Table 2 for ratios of the polymers), with solid-liquid phase separation creating a porous scaffold upon solvent removal. The scaffolds were conjugated by incubation of the avidin-modified PLGA NPs with the biotinylated-polymer scaffold in PBS at room temperature (Figure 2B). The morphology of nanoparticles loaded with Rhodamine B (RhB) as analysed by scanning electron microscopy (SEM) revealed a uniform spherical structure (Figure 3A). Crucially, the NP structures remained intact following incorporation within the polymer scaffolds (Figure 3B), with cross-sectional SEM analysis demonstrating an even distribution of intact PLGA-NPs within the polymer network (Figure 3C). The polymer blend scaffolds displayed a macro-porous framework, with an overall porosity of  $57\% \pm 3.21\%$  and  $61\% \pm 4.53\%$ , before and after nanoparticle decoration, respectively.

### **Release profiles of AA2P and VEGF**

A range of PLGA compositions with different molecular weights and monomer compositions (7 kDa 50/50, 38 kDa 50/50, and 50 kDa 85/15) were employed to study biofactor release profiles. In the first instance, the release kinetics of Rhodamine B (RhB) encapsulated within NP's generated from the three PLGA polymers were evaluated *in vitro* (Figure 4A).

The release of RhB from PLGA-NP reached 10%, 40% and 22% from the 7KDa, 38KDa and 50KDa polymers respectively during the first 1.5 hours. After 12 days, 48% of the RhB was observed to have been released from the 38KDa PLGA-NP compared to 22% from the 7KDa and 34% from the 50KDa PLGA-NP's (Figure 4A). Based on this data, 38KDa PLGA was selected to encapsulate VEGF and L-Ascorbic Acid 2-phosphate (AA2P) in all subsequent studies.

Loading of AA2P or VEGF into the PLGA nanoparticles was achieved using a double emulsion method. Burst release was observed for AA2P within 20 hours followed by gradual release of AA2P over 96 hours (Figure 4B). In initial experiments, the release of VEGF from PLGA nanoparticles was monitored over 10 days (Figure 5A). Initial burst release was reported over the first 30 minutes, but over a 72-hour time frame, VEGF release was observed to steadily increase, reaching a plateau with a concentration of 81 ng VEGF/mg of NPs (Figure 5B).

The current studies also assessed the release profiles of AA2P from scaffolds containing nanoparticles functionalised with and without avidin. We observed the release of 28  $\mu\text{g}$  and 14  $\mu\text{g}$  of AA2P released from scaffolds containing nanoparticles decorated with and without avidin, respectively (Figure S5). Since the avidin functionalised nanoparticles will be attached to the polymer scaffolds, as a consequence of avidin-biotin binding, scaffolds decorated with

avidin functionalised nanoparticles would be expected to show increased collagen release as observed (Figure S6).

### **Bioactivity analysis of AA2P and VEGF released from nanoparticles**

Ascorbic acid (vitamin C) is a co-factor for lysyl and prolyl hydroxylases, two essential enzymes in the collagen biosynthesis pathway.<sup>11</sup> Similar attributes are associated with its derivatives, including 2-phosphate-L-ascorbic acid (AA2P) which exhibits higher stability in solution.<sup>30</sup> Limited collagen biosynthesis, due to ascorbic acid deficiency, manifests in various systemic pathologies, including abnormalities in bone maturation, epiphyseal disease, pseudoparalysis related to bone pain, spontaneous fracturing and impaired bone healing.<sup>31</sup> Therefore, the delivery of ascorbic acid or AA2P in fracture environment could stimulate the healing process. Collagen deposition by MC3T3-E1 cells was observed to increase after 7 days culture, following supplementation with 2-phosphate-L-ascorbic acid or nanoparticles containing 2-phosphate-L-ascorbic acid (Figure 6). There was a significant 7.24 ( $p < 0.01$ ) and 5.8-fold ( $p < 0.05$ ) increase in collagen production in MC3T3-E1 cultures maintained in medium containing 0.5 mg NP-AA2P compared to blank NPs and no treatment control respectively. In addition, a 6.95-fold ( $p < 0.05$ ) increase in collagen production compared to the NP-blank was observed in cell cultures supplemented with 1 mg NP-AA2P (Figure 6). It is important to note that the concentration of free 1  $\mu\text{g}$  AA2P/ml added to medium was reported to be sufficient to increase collagen production in MC3T3-E1 cells in a long-term manner and further addition of AA2P was not observed to correlate with collagen production.<sup>32</sup> Calculations based on the release kinetics of NP-AA2P showed that the concentration of released AA2P from 0.5 mg NP-AA2P was 15  $\mu\text{g}/\text{ml}$  (Figure 4B). Initial studies focusing on the effect of ascorbic acid and its derivatives on collagen production *in vitro* reported dose-response effects within 3 days that correspond to short term effects, while long term effects were not evaluated.<sup>33,34</sup> Although, the administration of higher AA2P concentrations could have a beneficial effect on the earlier onset of cell differentiation compared to lower concentrations, in the long term, concentrations of 1  $\mu\text{g}$  AA2P per ml would appear sufficient to promote collagen production. Hence, the delivery of NP-AA2P could have promising effects on both, stimulation of collagen production and cell differentiation *in vivo*.

Tubule branch length formed by HUVECs was found to correlate with VEGF concentrations added to the medium. A two-fold increase ( $\pm 0.6$ ;  $p < 0.0001$ ) in HUVEC tubule branch length was observed at 40 ng VEGF per ml, compared to results obtained from cultures in the absence of VEGF (Figure 7). The increase in HUVEC tubule branch length was 2 ( $p < 0.001$ ) and 3-fold ( $p < 0.0001$ ) for cells maintained in medium containing 0.5 mg NP-VEGF compared to cultures in the absence of VEGF or the NP-blank, respectively. There was no significant difference in the branching length for groups maintained in medium containing 1 mg NP-VEGF

compared to control (0 ng VEGF/ml) and conditioned medium (CM) control groups. The concentration of VEGF released into medium from the NPs was approximately 70 ng VEGF/ml for the CM 1 group and 35 ng VEGF/ml for the CM 0.5 group as evidenced by ELISA (Figure 5B). The lower concentration of VEGF was sufficient to stimulate endothelial tubular network formation and to support physiological vessel growth and limit vessel leakage.<sup>35,36</sup> Controlling the dosage of VEGF released from NPs on a micro-environmental level would support optimal tubular network formation and angiogenesis *in vivo*.

### **Chorioallantoic membrane (CAM) assay of polymer-nanoparticle scaffolds for angiogenic bioactivity**

The Chorioallantoic membrane (CAM) assay was used to determine the potential of VEGF-NPs to enhance angiogenesis after 8 days culture. Scaffolds were found to be fully integrated within the CAM and vessel formation was clearly visible (Supplementary Figure S8).

The activity of released VEGF from the nanoparticles contained within the scaffold was evaluated using the CAM assay (Figure 8A). The Chalkley score method was used to evaluate changes in the vasculature of the CAM in the presence of VEGF. An increase in vessel number was observed in CAM retrieved from eggs treated with 25 and 100 ng VEGF and CAM samples with scaffolds containing VEGF-NP's (Figure 8A). The addition of VEGF to CAM at embryonic day 10, resulted in a significant dose-dependent increase in the Chalkley score at day 18 compared to the control; generating a Chalkley score of 5.1 ( $\pm 0.8$ ) for controls and for 25 and 100ng VEGF a score of 7.8 ( $\pm 1.6$ ;  $p < 0.001$ ) and 10.2 ( $\pm 1.7$ ;  $p < 0.001$ ), respectively (Figure 8A). In addition, the Chalkley score was significantly higher for the VEGF-NP's samples compared to scaffolds containing blank NPs ( $p < 0.001$ ) and the no treatment group ( $p < 0.001$ ). The Chalkley score was noted to be comparable for scaffolds containing VEGF-NP's (10.1 $\pm$ 2.11) compared to exogenous 10 ng VEGF (10.2 $\pm$ 1.7) (Figure 8A).

Finally, we examined angiogenesis in CAM cultures treated with scaffolds containing nanoparticles encapsulated with VEGF and nanoparticles with AA2P. A significant increase in the Chalkley score observed for VEGF-NP's, compared to control (CAM only;  $p < 0.0001$ ) and scaffold containing blank-NP's ( $P < 0.001$ ), was observed (Figure 8B). The release of AA2P alone did not affect angiogenesis, while the combined release of AA2P and VEGF indicated an increased vasculature network evidenced by the increase in Chalkley score compared to CAM control and scaffolds containing blank-NP's or AA2P-NP's (Figure 8B), although, this did not reach statistical significance.

### **Discussion**

The current major challenges in using synthetic scaffold materials for tissue engineering lies in the requirement for growth factor delivery mechanisms that mimic the *in vivo* release profiles

of factors produced during natural tissue morphogenesis or repair. The biocompatibility of PLGA based-microparticles and scaffold delivery systems were shown via the bioactivity of the encapsulated growth factor VEGF and the long-lasting analogue of ascorbic acid, 2-phosphate-L-ascorbic acid (AA2P).<sup>22,37,38</sup> The delivery of multiple growth factors from soft and hard polymer scaffolds with distinct kinetics has been reported previously.<sup>39</sup> However, the administration of multiple growth factors from polymer scaffolds via the incorporation of PLGA nanoparticles allows for more precise delivery and control of release that has not been shown before. In the current study, we used a combination of surface modified PLGA and biotin functionalised polymer scaffolds. The palmitic acid was coupled to the ligand, avidin, which then was introduced to the surface of PLGA nanoparticles. Biotinylated PEI, PVAc, PLLA and chitosan were solvent blended into 3D structural polymer networks. VEGF and AA2P were encapsulated within the PLGA nanoparticles, which were loaded onto the polymer networks/scaffolds through biotin-avidin conjugation. The release profiles of PLGA nanoparticles was controlled by using PLGA polymers with different molecular weights and monomer compositions. The *in vitro* release profiles from PLGA nanoparticles showed a moderate initial burst release followed by a sustained release. The release of VEGF and AA2P from the nanoparticles alone, and when attached to the scaffolds, confirmed the bioactivity of both factors/molecules within *in vitro* and *ex vivo/in vivo* environments. The limitation of using PLGA nanoparticle as a delivery system has been discussed in previous studies.<sup>39</sup> A more controlled release system, such as triggering release, will potentially improve the lack of control of release by using PLGA nanoparticles that limited correlation between growth factor efficacies in the current study. Given the fundamental role of vascularisation in the bone healing process and production of extracellular matrix,<sup>11,40</sup> the activity of released VEGF and AA2P to stimulate vascularisation and collagen production, respectively, was addressed and evaluated. The release of VEGF stimulated tubule formation by endothelial cells and vasculature formation in CAM, while AA2P stimulated collagen deposition by osteoblasts *in vitro*. Thus, the current studies indicate the delivery of biomolecules within nanoparticles combined with scaffolds offers a promising platform to support angiogenesis and collagenous matrix formation during the bone healing process. Interestingly, the combination of VEGF and AA2P are particularly favourable for the treatment of osteoporotic patients whose bone is characterised by declining trabecular bone.<sup>41</sup> While VEGF could stimulate angiogenesis and thus aid nutrient-waste exchange, AA2P administration could stimulate osteoblast function and, ultimately, the formation of bone. Further evaluation of scaffolds loaded with a combinatorial mixture of NP's within an *in vivo* environment will allow evaluation of the potential and direct effect of the proposed strategy on bone healing.



## **Experimental section**

### **Materials**

Dulbecco Modified Eagle Medium, alpha-MEM, penicillin/streptomycin, DPBS were obtained from Lonza. Ascorbic acid 2-phosphate and glycerol 2-phosphate disodium salt hydrate were purchased from Sigma. Fetal bovine serum and M199 medium was obtained from Gibco. ECGS/H were from Promocell. VEGF, TGF $\beta_3$  were from Peprotech. Poly(lactide-co-glycolide) (PLGA) (50:50 Resomer RG 502, RG 505, RG 504, and 85:15 PLGA ester terminated  $M_w$  50,000-75,000) and tween 20, biotin, Chitosan (CS) (from crab shells), polyethylenimine (PEI) (average  $M_w$  = 800 Da), Poly(L-lactic acid) (PLLA) (viscosity ~ 1.0dL/g) and Poly(vinyl acetate) (PVAc) (average  $M_w$  = 140 KDa), Palmitic acid *N*-hydroxysuccinimide ester (NHS-palmitic acid) and avidin were from Sigma. All other reagents were from Sigma and used without further purification. Analytical grade chloroform, glacial acetic acid, dichloromethane (DCM) were from Thermo Fisher Scientific, UK. Emulsions were generated using a Branson sonifier 250 at 40% max amplification.  $^1\text{H}$  nuclear magnetic resonance spectra were recorded on a Bruker AVA500 spectrometer (500 MHz respectively) at 298 K in deuterated solvents.

### **Preparation of avidin – palmitic acid conjugates**

Avidin (10 mg/ml) was reacted with 10-fold mol excess of NHS–palmitic acid in PBS (1 ml) containing 2% deoxycholate. The mixture was sonicated briefly and gently mixed at 37°C for 12 hours. To remove excess fatty acid and hydrolyzed ester, the mixture was dialyzed (MWCO 2KDa) against PBS containing 0.15% deoxycholate. The resultant avidin–palmitate conjugate was analysed by reverse-phase HPLC.

### **Biotinylated polymers**

Biotin (0.50 g, 2.04 mmol) and *N,N'*-Disuccinimidyl carbonate (0.52 g, 2.02 mmol) were dissolved in 10 mL dimethylformamide. Triethylamine (0.33 ml) was then added to the resulting solution. After reacting at room temperature for 16 hours, polyethyleneimine (PEI,  $M_w$  = 800) (1.22 g, 1:1 to biotin) was added to the mixture. After 12 hours at room temperature, the product was isolated by precipitation from THF and dried under reduced pressure at 40 °C, to give a white powder.

### **PLGA nanoparticle fabrication**

PLGA-NPs loaded with rhodamine B (RhB), or VEGF or AA2P and were fabricated by adding 0.1 mL of RhB (1 mg/mL), VEGF (1 mg/ml in PBS) or AA2P (5 mg/ml in PBS) to 2 mL of PLGA (38 kDa, 50/50) in dichloromethane (DCM, 25 mg/ml), and emulsified with a Branson sonicator for 40 s on an ice bath. 4 ml of a Tween-20 solution (1% in water) was added to the primary emulsion and sonicated for 40 s on an ice bath. The resulting emulsion was added to 50 ml of

a Tween-20 solution (0.2% in water) containing the avidin-palmitic acid conjugate (0.05%) and sonicated twice for 40 seconds in an ice bath. The DCM was evaporated under reduced pressure at 40°C, forming the PLGA-NP's. The nanoparticles were collected by centrifugation at 10,000 rpm at 4 °C for 10 min, washed three times to remove non-entrapped VEGF or AA2P and then freeze dried. The amount of entrapped AA2P was determined by HPLC (UV, 245 nm) and VEGF was determined by an ELISA. The encapsulation efficiency was calculated by the following equation:

$$EE\% = \frac{\text{Cargo loaded}}{\text{Cargo added}} \times 100$$

Providing an encapsulation efficiency of RhB 18%, VEGF 20%, and AA2P 21%.

### **Release profiles**

PLGA-NPs (1 mg/ml) containing RhB and AA2P were loaded into 20 kDa MWCO dialysis tubing and dialysed against 20 ml of phosphate buffered saline (PBS, pH 7.4) in the dark at 37 °C. At specified time points, 100 µl of the dialysis buffer was collected and replaced with equal volume of fresh PBS. The concentrations of RhB present in the dialysate were determined ( $\lambda_{\text{ex}}$  530nm and  $\lambda_{\text{em}}$  590nm).

VEGF-NPs were re-suspended in DMEM at a concentration of 2 mg VEGF-NPs per ml and incubated under rotation at 37°C. At specified time points, samples were centrifuged for 8 min at 12000rpm and a 30 µl sample was collected for analysis. The volume collected for analysis was replaced by fresh DMEM. Protein content in samples was determined using the human VEGF Quantikine ELISA (R&D Systems) according to the manufacturer protocol.

### **Polymer scaffold fabrication**

Polymer blend scaffolds were fabricated using solutions of CS (2% w/v) in 2% acetic acid and 98% deionized water (v/v), PLLA (10% (w/v) and PVAc (10% w/v) (both in chloroform) and PEI-biotin (20% w/v) in water, which were mixed at the volume ratio (using the above solutions) of CS/PLLA/PVAc/PEI-biotin/water (2/1/1/0.1/2). The mixture was thoroughly mixed using a vortex mixer for 15 min (volume approximately 12 ml). The blended solution was then transferred into silicon moulds with dimensions of diameter = 17 mm and height = 2 mm, frozen in liquid nitrogen and freeze dried while maintaining a temperature of -20 °C until no solvent remained, yielding scaffold cylinders.

### **Combination of polymer scaffold and PLGA-NP's**

PLGA-NP's was prepared at 10mg/mL in water; the polymer scaffold (17mm X 2mm) was incubated with the PLGA-NP suspension (200 µl) for 10 mins with gently shaking. Scaffolds

were removed from the PLGA-NP solution and placed in water for 2 X 10 minutes and scaffolds were freeze-dried.

### **Soluble collagen quantification**

MC3T3-E1 cells were plated at a density of 20,000 cells per cm<sup>2</sup> in DMEM, 10% FBS and 1% penicillin/streptomycin. The following day, medium was removed and cell culture inserts were placed above the cells. Medium containing DMEM, 10% FBS and 1% penicillin/streptomycin, 2 mM glycerol 2-phosphate was added to the well compartment while medium supplemented with free ascorbate at a concentration of 1, 5, 25, 50 µg/ml, containing NP or medium alone was added to the insert. The concentration of NP added to cell culture was 1 mg NP/ml medium. The medium containing free ascorbate, NP-AA2P or NP-blank was changed every 2-3 days. After 7 days of culture, cells were washed with DPBS and lysed for collagen and DNA quantification. After overnight lysis with 0.5 M acetic acid containing 0.1 mg pepsin, total collagen content was assessed using the Sircol™ soluble collagen assay according to the manufacturers protocol. Briefly, 100 µl sample was incubated with 1 ml Sircol Dye Reagent on a mechanical shaker for 30 minutes. Subsequently, samples were centrifuged at 12,000rpm for 10 minutes and the supernatant was removed. Samples were washed with ice-cold "Acid-Wash Reagent" and centrifugation was repeated. After removing any liquid residue, samples were dissolved in the "Alkali Reagent" and the absorbance was read at 560nm. Concentration of collagen in samples was determined from the equation generated from a standard curve. Results were normalised to DNA content.

### **DNA quantification**

DNA in samples lysed in CellLytic™ M were quantified using Quant-iT PicoGreen dsDNA Assay Kit according to the manufactures protocol. Briefly, samples were incubated with the PicoGreen reagent for 5 minutes and fluorescence was measured (480nm/520nm). DNA levels were determined using the standard curve.

### **Tubule assay**

Human umbilical cords were obtained, following signed consent, from healthy mothers after normal, full-term deliveries from the Princess Anne Hospital, Southampton, under ethical approval from the Southampton & South West Hampshire Local Research Ethics Committee (LREC 05/Q1702/102). HUVEC were isolated and cultured as described by Jaffe<sup>9</sup> with minor modifications. In brief, human umbilical cord blood vein cells (HUVEC) were isolated using collagenase A and expanded in M199 medium containing ECGS/H, 10% FBS and 1% penicillin/streptomycin. For the tubule assay 40000 cells/cm<sup>2</sup> were seeded in tissue culture plates covered with 3% Laponite-fibronectin hydrogel (n=3 per group). Cells were incubated

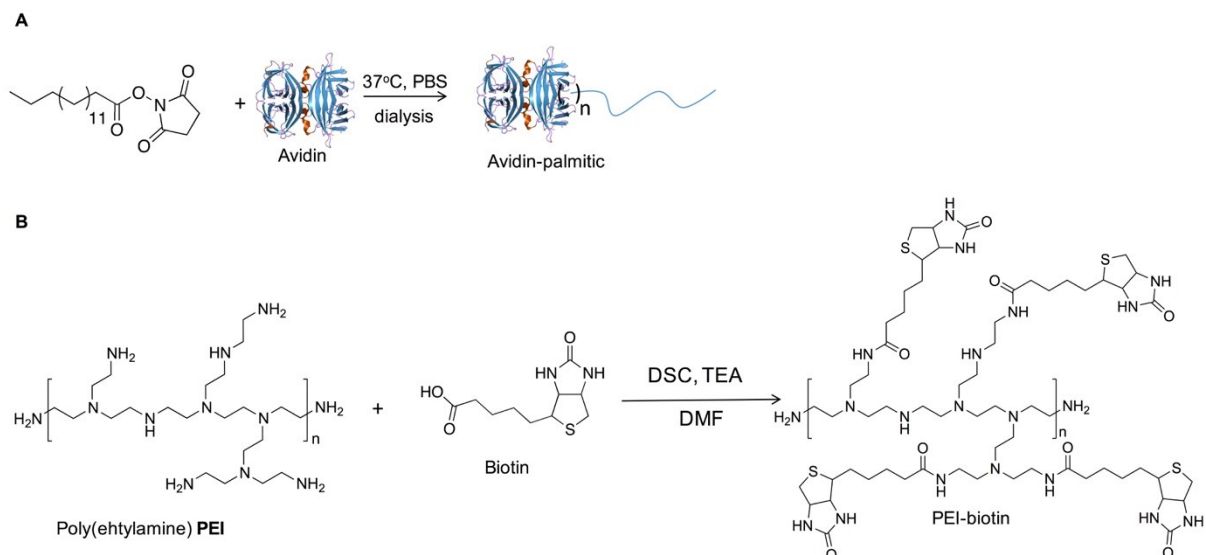
for 18 hours in medium containing 40 ng/ml FGF-2 and with the addition of VEGF added to medium or released into the medium from VEGF-NP's at 37°C, 5% CO<sub>2</sub> in a humidified atmosphere. No addition of VEGF or supernatant from NP-blank was used as negative controls. Medium from VEGF-NP's and blank-NP's was collected after 6 hours incubation of the NP's at 37°C followed by centrifugation at 12000rpm. After incubation, cell cultures were imaged using an AxioVert200 Zeiss microscope and images were processed using Angiogenesis Analyzer task in ImageJ v2.0.0 to quantify total branching length. Four different areas from each sample were imaged and analysed.

### **Chorioallantoic membrane (CAM) assay**

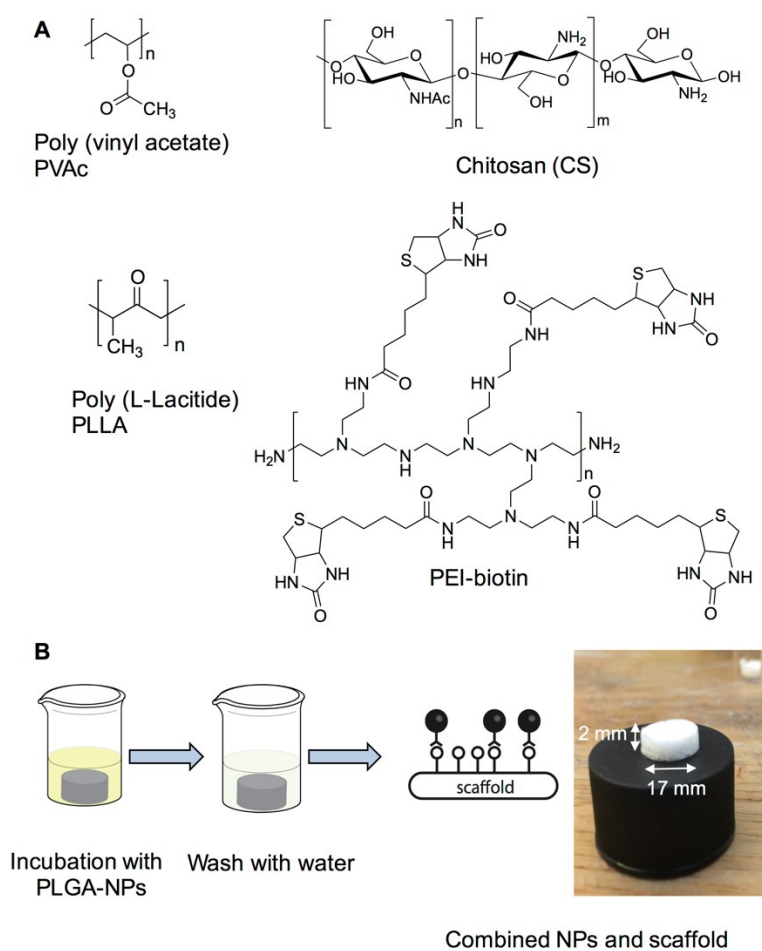
Animal procedures were carried out in accordance with the guidelines and regulations included in the Animals (Scientific Procedures) Act 1986, UK and chick embryo chorioallantoic membrane experimental protocols were approved and performed under Home Office Approval UK (Project licence – PPL P3E01C456) approved at the University of Southampton. The eggs were incubated horizontally for 10 days at 37 °C in a 60% humidified atmosphere, using a Hatchmaster incubator (Brinsea, UK) with one hour scheduled rotation. At day 10-post fertilisation, a scalpel blade was used to make an approximate 0.5 cm<sup>2</sup> square incision on the eggshell under sterile conditions and the eggshell fragment was removed to access the CAM beneath. Scaffolds containing blank-NP's or VEGF-NP's were sterilised under UV for 40 minutes and incubated in 30% antibiotic-antimitotic solution for 30 minutes. After extensive washing with DPBS, scaffolds were placed on the CAM of the chick embryo. For controls 30 µl DPBS with 25 ng and 100 ng VEGF or without VEGF was placed on the CAM of the chick embryo. Six to eight eggs were used for each experimental condition. The incision in eggshell was sealed with sterile parafilm secured with autoclave tape. After incubation without rotation for 8 days, CAM containing scaffolds and from control groups, were isolated and the gestational process was terminated following Home Office specific guidelines.

### **Chalkley point-overlap morphometry**

Isolated CAMs from chick embryos were fixed in 4% PFA for one hour and vascularisation evaluated using Chalkley point-overlap morphometry (Chalkley score) with a Stemi 2000-C Zeiss microscope at 10 cm distance of sample from objective and 1.25x magnification. Five areas having the most concentrated vascular structures on each CAM were assessed and the count of the highest collision points of Chalkley graticule and vasculature on CAM was recorded individually as score.

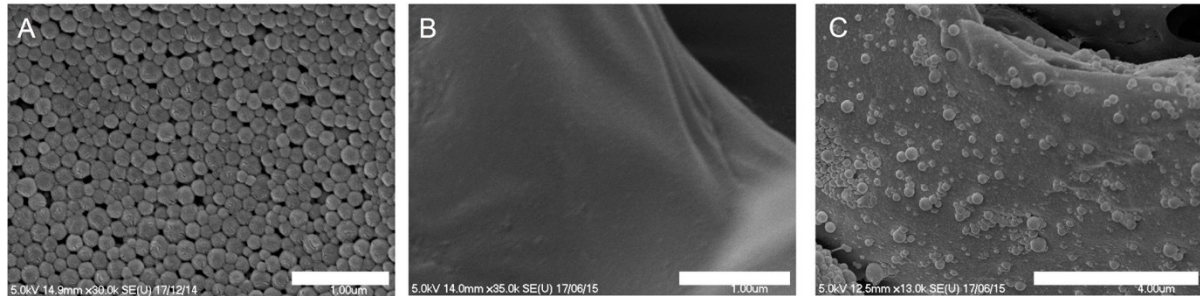


**FIGURE 1:** Figure 1. Synthesis of A: An Avidin-Palmitic acid conjugate and. B: Biotinylated-PEI.

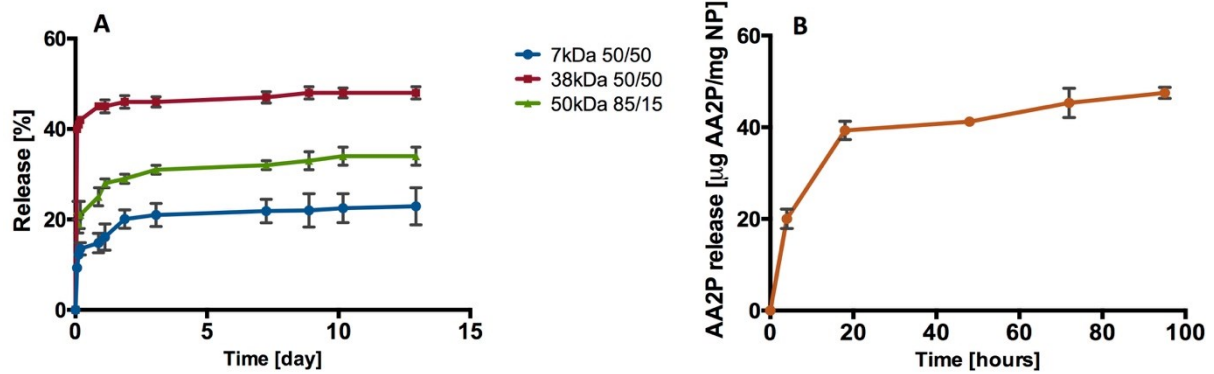


**FIGURE 2:** A. Scaffold preparation. The four polymers; polyvinyl acetate, chitosan, poly (L-lactide) and PEI-biotin were solvent blended as previously described.<sup>29</sup> B: Scaffold decorated

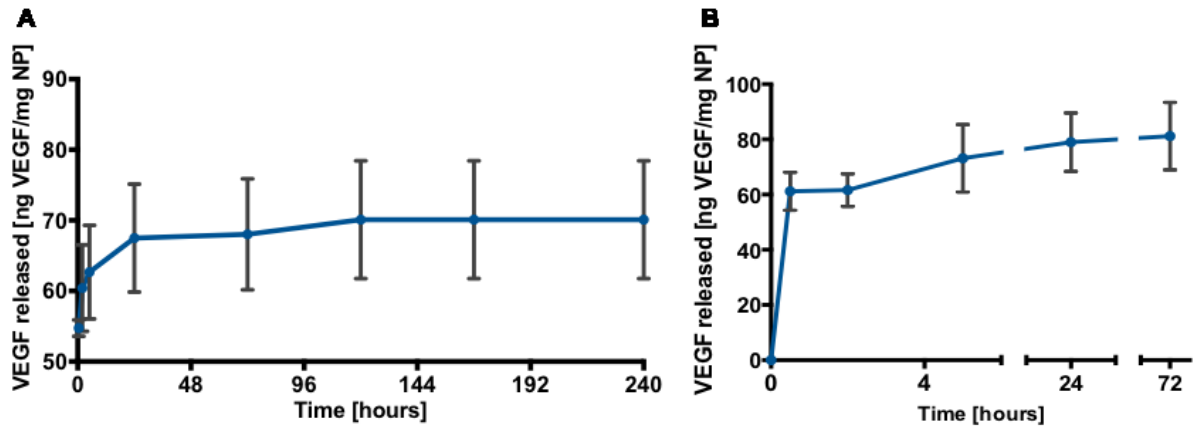
combinatorially with nanoparticles. The image shows the polymer scaffold (17 mm X 2 mm) combined with PLGA nanoparticles.



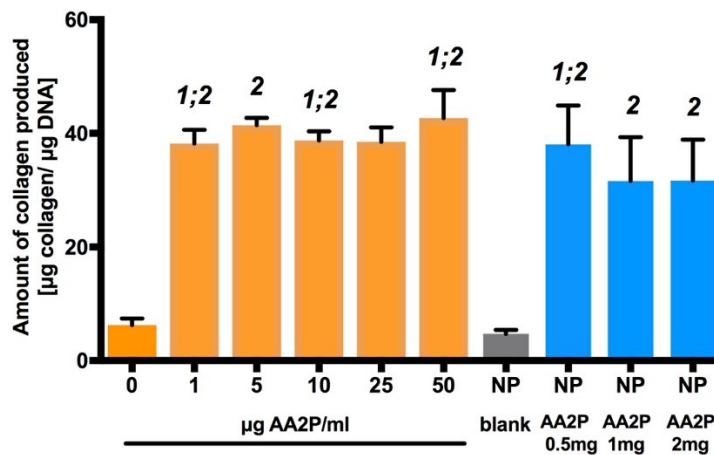
**FIGURE 3:** Morphology, size and distribution of NPs in the PLGA scaffolds. SEM images of A: avidin labelled nanoparticles, B: Biotin labelled scaffold and C: scaffolds combined with nanoparticles. NPs were uniform and had low size distributions. Nanoparticle structures remained intact after incorporation within the polymer scaffolds. Scale bars represent 1  $\mu\text{m}$  for image A and B; 4  $\mu\text{m}$  for image C.



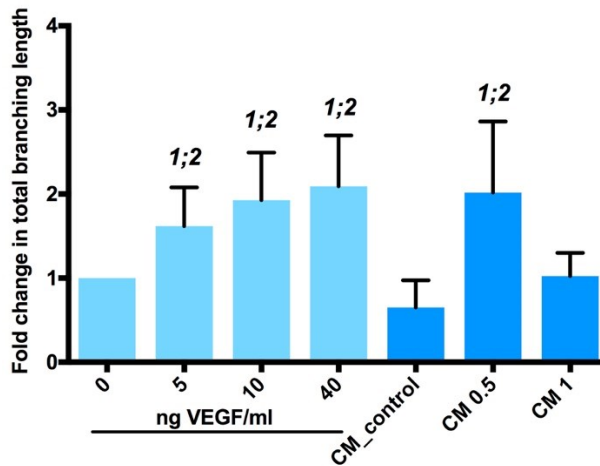
**FIGURE 4:** Release profiles. A: Release of rhodamine B from PLGA (7 kDa, 38 kDa, and 50 kDa) nanoparticles. B: Release of AA2P from PLGA (38 kDa 50/50) nanoparticles (n=3; one batch).



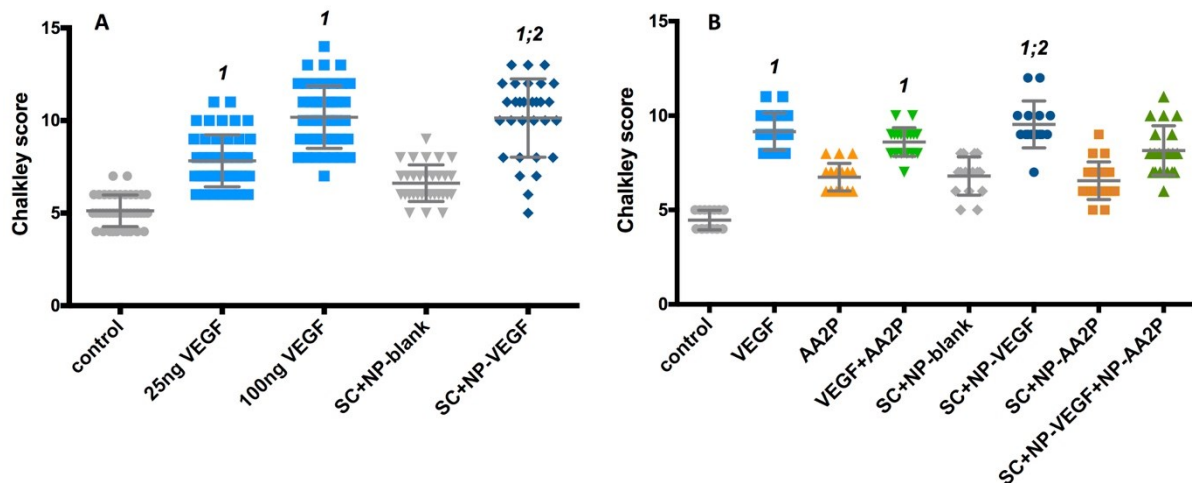
**FIGURE 5:** Release profiles. A: Release of VEGF from PLGA (38 kDa 50/50) nanoparticles over 10 days (n=3; one batch). B: Release of VEGF from PLGA (38 kDa 50/50) nanoparticles over 72 hours (n=9; three separate studies). The data are presented as mean  $\pm$  SD.



**FIGURE 6:** Bioactivity of released AA2P from PGLA-NP's. Fold-changes in collagen production in response to AA2P supplemented into medium and released from the nanoparticles. 1: statistically different from 0 µg AA2P/ml; 2: statistically significant from NP blank. Statistical significance at  $p < 0.05$  (n=9, three separate studies). The data are presented as mean  $\pm$  SD.



**FIGURE 7:** Bioactivity of VEGF released from PGLA-NP's. Fold changes in total branching length of tubules formed in 2D HUVEC tubule formation assay on 3% Laponite-fibronectin hydrogel. CM: conditioned medium; CM 0.5: conditioned medium after incubation of 0.5 mg NP-VEGF for 6 hours; CM 1: conditioned medium after incubation of 1 mg NP-VEGF for 6 hours. 1: statistically different from 0 ng VEGF per ml; 2: statistically significant from CM control. Statistical significance at  $p < 0.05$  ( $n=9$ , three separate studies). The data are presented as mean  $\pm$  SD.



**FIGURE 8:** Evaluation of vasculature at day 18 of embryonic chick development using Chalkley score method in response to single- or dual-release of bioactive molecules from scaffold. A: Chalkley point-overlap morphometry results indicating changes in vessel numbers in CAM at day 18 after 8 days incubation with VEGF, or scaffold containing NP-VEGF; B: Chalkley point-overlap morphometry results indicating changes in vessel numbers in CAM at



day 18 after 8 days incubation with VEGF, AA2P or scaffolds containing NP-VEGF and/or AA2P. No VEGF and scaffolds with blank NP were used as controls. SC+NP-blank – scaffold containing PLGA nanoparticles; SC+NP-VEGF – scaffold containing nanoparticles with VEGF; SC+NP-AA2P – scaffold containing nanoparticles with AA2P; SC+NP-VEGF+NP-AA – scaffold containing nanoparticles with VEGF and AA2P; control – no treatment; VEGF – CAM treated with 25 ng VEGF; AA2P – CAM treated with 50 µg VEGF. 1: statistically different from control; 2: statistically significant from SC+NP-blank. Statistical significance at  $p < 0.05$  (9-12 samples per group; three separate studies). The data are presented as mean  $\pm$  SD.

**TABLE 1:** Characterisation of PLGA nanoparticles.

| PLGA   | Cargo | Mean Diameter ( nm) | PDi  | Zeta potential (mV) |
|--------|-------|---------------------|------|---------------------|
| 38 KDa | RhB   | 672                 | 0.09 | -25.2               |
| 38 KDa | -     | 675                 | 0.10 | -20.3               |
| 50 KDa | RhB   | 637                 | 0.12 | -20.8               |
| 7KDa   | RhB   | 653                 | 0.15 | -32.1               |
| 38 KDa | VEGF  | 682                 | 0.10 | -29.1               |
| 38 KDa | AA2P  | 669                 | 0.11 | -28.2               |

**TABLE 2:** Concentration of polymers (%w/v) used for scaffold preparation.

| Polymer | Concentration (w/v %)           | Recipe |
|---------|---------------------------------|--------|
| PVAc    | 10% in Chloroform               | 2.5 ml |
| PLLA    | 10% in Chloroform               | 2.5 ml |
| CS      | 1% in water with 2% acetic acid | 10 ml  |

---

### Conflicts of interest

There are no conflicts to declare.

### Acknowledgements

This work was supported by the European Research Council (Advanced Grant ADREEM ERC-2013-340469) and Biotechnology and Biological Sciences Research Council (BB/L00609X/1).

### Notes and references

†These authors contributed equally.

- 1 E. S. Place, N. D. Evans and M. M. Stevens, *Nat Mater*, 2009, 8, 457–470.
- 2 P. H. Liebesny, S. Byun, H.-H. Hung, J. R. Pancoast, K. A. Mroszczyk, W. T. Young, R. T. Lee, D. D. Frisbie, J. D. Kisiday and A. J. Grodzinsky, *Tissue Eng Part A*, 2016, 22, 917–927.
- 3 A. J. Lozano, H. J. Cestero and K. E. Salyer, *J Biomed Mater Res A*, 1976, 10, 545–548.
- 4 K M C Chow A B M Rabie, *Cleft Palate Craniofac J*, 2009, 37, 385–394.
- 5 B. Li, H. Wang, G. Zhou, J. Zhang, X. Su, Z. Huang, Q. Li, Z. Wu and G. Qiu, *RSC Advances*, 2017, 7, 4253–4259.
- 6 A. B. M. Rabie, *Connect. Tissue Res.*, 2009, 36, 337–345.
- 7 D. Gothard, E. L. Smith, J. M. Kanczler, H. Rashidi, O. Qutachi, J. Henstock, M. Rotherham, A. El Haj, K. M. Shakesheff and R. O. C. Oreffo, *Eur Cell Mater*, 2014, 28, 166–208.
- 8 Y. Liu, A. D. Berendsen, S. Jia, S. Lotinun, R. Baron, N. Ferrara and B. R. Olsen, *J Clin Invest*, 2012, 122, 3101–3113.
- 9 E. A. Jaffe, R. L. Nachman, C. G. Becker and C. R. Minick, *J Clin Invest*, 1973, 52, 2745–2756.
- 10 J. M. Kanczler and R. O. Oreffo, *Eur Cell Mater*, 2008.
- 11 R. T. Franceschi and B. S. Iyer, *J Bone Miner Res*, 1992, 7, 235–246.
- 12 B. L. Lyons and R. I. Schwarz, *Nucleic Acids Res*, 1984, 12, 2569–2579.
- 13 R. A. Jain, *Biomaterials*, 2000, 21, 2475–2490.
- 14 T. Govender, S. Stolnik, M. Garnett, L. Illum and S. Davis, *J Control Release*, 1999, 57, 171–185.
- 15 H. Murakami, M. Kobayashi and H. Takeuchi, *Int. J. Pharm.*, 1999.

- 16 J. Panyam and V. Labhasetwar, *Adv. Drug. Deliver. Rev.*, 2003.
- 17 R. Duncan, *Nat Rev Cancer*, 2006, 6, 688–701.
- 18 M. Cegnar, A. Premzl, V. Zavašnik-Bergant, J. Kristl and J. Kos, *Exp Cell Res*, 2004, 301, 223–231.
- 19 N. Obermajer, M. Cegnar, J. Kos and J. Kristl, *J. Control. Release*, 2007.
- 20 J. Davda and V. Labhasetwar, *Int J Pharm*, 2002, 233, 51–59.
- 21 J. Panyam and V. Labhasetwar, *Adv. Drug. Deliver. Rev.*, 2003, 55, 329–347.
- 22 J. S. Golub, Y.-T. Kim, C. L. Duvall, R. V. Bellamkonda, D. Gupta, A. S. Lin, D. Weiss, W. R. Taylor and R. E. Guldberg, *Am J Physiol Heart Circ Physiol.*, 2010, 298, H1959–H1965.
- 23 L. E. Strong, S. N. Dahotre and J. L. West, *J Control Release*, 2014, 178, 63–68.
- 24 G. Huang, J. Gao, Z. Hu, J. V. St John, B. C. Ponder and D. Moro, *J Control Release*, 2004, 94, 303–311.
- 25 K. Nazemi, F. Moztafzadeh, N. Jalali, S. Asgari and M. Mozafari, *Biomed Res. Int.*, 2014, 2014, 1–9.
- 26 K. Nazemi, P. Azadpour, F. Moztafzadeh, A. M. Urbanska and M. Mozafari, *Mater Lett*, 2015, 138, 16–20.
- 27 X. Jiang, H. Lin, D. Jiang, G. Xu, X. Fang, L. He, M. Xu, B. Tang, Z. Wang, D. Cui, F. Chen and H. Geng, *Sci. Rep.*, 2016, 6, 20784.
- 28 L. Li, G. Zhou, Y. Wang, G. Yang, S. Ding and S. Zhou, *Biomaterials*, 2015, 37, 218–229.
- 29 F. Khan, J. O. Smith, J. M. Kanczler, R. S. Tare, R. O. C. Oreffo and M. Bradley, *Adv Funct Mater*, 2013, 23, 2850–2862.
- 30 S. Takamizawa, *Cell Biol. Int*, 2004, 28, 255–265.
- 31 O. Fain, *Joint Bone Spine*, 2005, 72, 124–128.
- 32 W. Xing, S. Pourteymoor and S. Mohan, *Physiological Genomics*, 2011, 43, 749–757.
- 33 F. Langenbach and J. Handschel, *Stem Cell Res Ther*, 2013, 4, 117.
- 34 N. Jaiswal, S. E. Haynesworth, A. I. Caplan and S. P. Bruder, *J. Cell. Biochem.*, 1997, 64, 295–312.
- 35 C. R. Ozawa, A. Banfi, N. L. Glazer, G. Thurston, M. L. Springer, P. E. Kraft, D. M. McDonald and H. M. Blau, *J Clin Invest*, 2004, 113, 516–527.
- 36 A. Faulkner, R. Purcell, A. Hibbert, S. Latham, S. Thomson, W. L. Hall, C. Wheeler-Jones and D. Bishop-Bailey, *BMC Cell Biol*, 2014, 15, 41.
- 37 P. Losi, E. Briganti, C. Errico, A. Lisella, E. Sanguinetti, F. Chiellini and G. Soldani, *Acta Biomater*, 2013, 9, 7814–7821.
- 38 Y.-I. Chung, S.-K. Kim, Y.-K. Lee, S.-J. Park, K.-O. Cho, S. H. Yuk, G. Tae and Y. H. Kim, *J Control Release*, 2010, 143, 282–289.

- 39 A. Hernández, R. Reyes, E. Sánchez, M. Rodríguez Évora, A. Delgado and C. Évora, *J Biomed Mater Res A*, 2012, 100A, 2382–2391.
- 40 M. R. Hausman, M. B. Schaffler and R. J. Majeska, *Bone*, 2001, 29, 560–564.
- 41 M. P. Akhter, J. M. Lappe, K. M. Davies and R. R. Recker, *Bone*, 2007, 41, 111–116.