



# THE UNIVERSITY *of* EDINBURGH

## Edinburgh Research Explorer

### **Systems proteomic analysis reveals that Clusterin and Tissue Inhibitor of Metalloproteinases 3 increase in leptomenigeal arteries affected by cerebral amyloid angiopathy**

**Citation for published version:**

Manousopoulou, A, Gatherer, M, Smith, C, Nicoll, JAR, Woelk, CH, Johnson, M, Kalaria, R, Attems, J, Garbis, SD & Carare, RO 2016, 'Systems proteomic analysis reveals that Clusterin and Tissue Inhibitor of Metalloproteinases 3 increase in leptomenigeal arteries affected by cerebral amyloid angiopathy', *Neuropathology and Applied Neurobiology*. <https://doi.org/10.1111/nan.12342>

**Digital Object Identifier (DOI):**

[10.1111/nan.12342](https://doi.org/10.1111/nan.12342)

**Link:**

[Link to publication record in Edinburgh Research Explorer](#)

**Document Version:**

Publisher's PDF, also known as Version of record

**Published In:**

Neuropathology and Applied Neurobiology

**Publisher Rights Statement:**

This is an open access article under the terms of the Creative Commons Attribution License, which permits use, distribution and reproduction in any medium, provided the original work is properly cited.

**General rights**

Copyright for the publications made accessible via the Edinburgh Research Explorer is retained by the author(s) and / or other copyright owners and it is a condition of accessing these publications that users recognise and abide by the legal requirements associated with these rights.

**Take down policy**

The University of Edinburgh has made every reasonable effort to ensure that Edinburgh Research Explorer content complies with UK legislation. If you believe that the public display of this file breaches copyright please contact [openaccess@ed.ac.uk](mailto:openaccess@ed.ac.uk) providing details, and we will remove access to the work immediately and investigate your claim.



# Systems proteomic analysis reveals that clusterin and tissue inhibitor of metalloproteinases 3 increase in leptomeningeal arteries affected by cerebral amyloid angiopathy

A. Manousopoulou\*†, M. Gatherer\*, C. Smith‡, J. A. R. Nicoll\*, C. H. Woelk\*, M. Johnson§, R. Kalaria§, J. Attems§, S. D. Garbis\*†¶<sup>1</sup> and R. O. Carare\*<sup>1</sup>

\*Clinical and Experimental Sciences Unit, Faculty of Medicine, †Institute for Life Sciences, University of Southampton, Southampton, ‡Pathology Department, University of Edinburgh, Edinburgh, §Institute of Neuroscience, Newcastle University, Newcastle upon Tyne, and ¶Cancer Sciences Unit, Faculty of Medicine, University of Southampton, Southampton, UK

A. Manousopoulou, M. Gatherer, C. Smith, J. A. R. Nicoll, C. H. Woelk, M. Johnson, R. Kalaria, J. Attems, S. D. Garbis and R. O. Carare (2016) *Neuropathology and Applied Neurobiology*

## Systems proteomic analysis reveals that clusterin and tissue inhibitor of metalloproteinases 3 increase in leptomeningeal arteries affected by cerebral amyloid angiopathy

**Aims:** Amyloid beta (A $\beta$ ) accumulation in the walls of leptomeningeal arteries as cerebral amyloid angiopathy (CAA) is a major feature of Alzheimer's disease. In this study, we used global quantitative proteomic analysis to examine the hypothesis that the leptomeningeal arteries derived from patients with CAA have a distinct endophenotypic profile compared to those from young and elderly controls. **Methods:** Freshly dissected leptomeningeal arteries from the Newcastle Brain Tissue Resource and Edinburgh Sudden Death Brain Bank from seven elderly (82.9  $\pm$  7.5 years) females with severe capillary and arterial CAA, as well as seven elderly (88.3  $\pm$  8.6 years) and five young (45.4  $\pm$  3.9 years) females without CAA were used in this study. Arteries from four patients with CAA, two young and two elderly controls were individually analysed using quantitative proteomics. Key proteomic findings were then validated using

immunohistochemistry. **Results:** Bioinformatics interpretation of the results showed a significant enrichment of the immune response/classical complement and extracellular matrix remodelling pathways ( $P < 0.05$ ) in arteries affected by CAA vs. those from young and elderly controls. Clusterin (apolipoprotein J) and tissue inhibitor of metalloproteinases-3 (TIMP3), validated using immunohistochemistry, were shown to co-localize with A $\beta$  and to be up-regulated in leptomeningeal arteries from CAA patients compared to young and elderly controls. **Conclusions:** Global proteomic profiling of brain leptomeningeal arteries revealed that clusterin and TIMP3 increase in leptomeningeal arteries affected by CAA. We propose that clusterin and TIMP3 could facilitate perivascular clearance and may serve as novel candidate therapeutic targets for CAA.

**Keywords:** clusterin, complement pathway, extracellular matrix remodelling, leptomeningeal arteries, proteomics, TIMP3

Correspondence: Roxana O. Carare, Experimental Sciences Unit, Faculty of Medicine, Southampton General Hospital, Academic Block, MP806, Clinical Neurosciences, Tremona Road, Southampton SO16 6YD UK. Tel: +447909518498. Fax: +442381 206085; E-mail: R.O.Carare@soton.ac.uk

<sup>1</sup>SDG and ROC jointly led the study and are co-senior authors.

## Introduction

The deposition of amyloid- $\beta$  (A $\beta$ ) peptides in the walls of cerebral arteries as cerebral amyloid angiopathy (CAA) is a major feature of Alzheimer's disease and may contribute to cognitive decline [1,2]. CAA

predominantly affects the leptomeningeal and cortical arteries especially in the occipital lobe, while capillaries are less frequently and veins rarely involved [3–5]. In the majority of cases there is no overproduction of A $\beta$  in the vessel wall, suggesting that the deposition of A $\beta$  in the walls of cerebral arteries is a result of a failure of elimination of neuronally derived A $\beta$  [6]. Increasing age and possession of at least one apolipoprotein  $\epsilon$ 4 (APOE4) allele are risk factors for CAA and both have been suggested to impair cerebral A $\beta$  clearance systems, thereby reducing A $\beta$  elimination from the brain [7–10]. We have demonstrated that A $\beta$  and other solutes are eliminated along the basement membranes of capillaries and arteries, effectively the lymphatic drainage of the brain [11]. Experimental work involving intraparenchymal injections of tracers demonstrated that the biochemical structure and morphology of the basement membranes of capillaries and arteries change with age and with possession of APOE4 genotype, resulting in failure of efficient clearance of A $\beta$  [12–14]. The exact targets for the facilitation of perivascular clearance of A $\beta$  are not clear.

Proteomics allows the in-depth and global assessment of gene products at the protein level as they occur in a variety of biological specimens, including cell lines, tissue, blood and proximal fluids. The advanced use of liquid chromatography combined with mass spectrometry permits the identification of thousands of proteins with ultra-high precision and sensitivity, not available by any other analytical approach. Using stable isotope isobaric reagents allow such proteomes to be profiled in parallel across multiple biological or clinical states under identical analytical conditions, a feature referred to as the multiplex advantage [15–23]. For example, such a strategy allows the comparison of a given *in vitro* or *in vivo* model under a given homeostatic state (that is physiological condition) relative to a perturbation state (that is pathological condition or exposure to a stimulus) under exactly the same experimental conditions.

This study employed isobaric quantitative proteomic analysis of fresh frozen human leptomeningeal arteries from young and elderly subjects and patients with CAA to test the hypothesis that leptomeningeal arteries derived from patients with CAA have a unique endophenotypic profile compared to those from young and elderly controls.

## Materials and methods

### Isolation of human leptomeningeal arteries

Human fresh frozen *post mortem* leptomeningeal arteries from the Newcastle Brain Tissue Resource and MRC Sudden Death Brain & Tissue Bank (Edinburgh) were used for this study. CAA cases were diagnosed *post mortem* by JA, according to published criteria including the neuritic Braak stages [24], Thal amyloid phases [25], CERAD scores [26], NIA-AA scores [27] and McKeith criteria [28] and showed varying degrees of Alzheimer's disease pathology. For CAA we used a recently developed staging system, which assesses meningeal and parenchymal CAA separately and also scores capillary CAA [1,2]. All CAA cases had severe CAA as they showed widespread circumferential A $\beta$  in meningeal and cortical arterial vessels as well as A $\beta$  depositions in capillary walls. None of the cases was diagnosed with CAA during their lifetime. The cases from the MRC Sudden Death Brain & Tissue Bank (Edinburgh) had no neurological disease during life and no significant neuropathological changes *post mortem*. We excluded cases with arteriolosclerosis/lipohyalinosis from this cohort. Samples were collected and prepared in accordance with the National Research Ethics Service-approved protocols. Leptomeningeal arteries in the occipital regions were removed from the frozen coronal slices from brains of young females ( $45.4 \pm 3.9$  years;  $n = 5$ ), elderly females without CAA ( $88.3 \pm 8.6$  years;  $n = 7$ ) and females with severe CAA ( $82.6 \pm 7.5$  years;  $n = 7$ ) (Table 1). Only female subjects were included in the present study as it has been shown that sex-dependent differences exist in CAA [29–31]. The frozen coronal slices were placed at  $-20^{\circ}\text{C}$  overnight to acclimatize from the  $-70^{\circ}\text{C}$  storage prior to dissection in a cold cabinet at  $-12^{\circ}\text{C}$ . Arteries were identified based on their morphology of a vessel and they were distinguished from veins by the thicker wall and leptomeningeal sheet as they penetrate the cortex. The abundant presence of vascular smooth muscle actin confirmed they were arteries. Selected vessels were eased with a micro-scalpel from the meningeal surface of the gyri and sulci, removed and placed in pre-cooled tubes to avoid thawing. These specimens were then snap frozen at  $-80^{\circ}\text{C}$ .

**Table 1.** Details of post mortem samples

Sample #	Study group	Age (years)	Used in proteomic analysis	Braak stage	Thal amyloid phase	Post mortem delay (h)	Cause of death	Duration of dementia (years)	CAA inflammation/vasculitis
1	Young control	51	Yes	0	Not applicable	81	Metastatic carcinoma	0	Not applicable
2	Young control	46	Yes	0	Not applicable	49	Myocardial infarction; coronary artery thrombosis; coronary artery atherosclerosis	0	Not applicable
3	Young control	45	No	0	Not applicable	93	Coronary artery atherosclerosis	0	Not applicable
4	Young control	40	No	0	Not applicable	77	Bronchial asthma	0	Not applicable
5	Young control	45	No	0	Not applicable	40	Suspension by ligature	0	Not applicable
6	Elderly control	79	Yes	IV	3	9	Old age, dementia with Parkinson's disease	9	Mild, some vessels with perivascular infiltrate
7	Elderly control	88	Yes	III	0	22	Aspiration pneumonia; total anterior circulation stroke	Not available	Not remarkable
8	Elderly control	74	No	III	1	53	Heart failure and lung cancer	Not available	Not remarkable
9	Elderly control	94	No	II	1	15	Left ventricle failure; ischaemic heart disease	Not available	Not remarkable
10	Elderly control	95	No	III	0	66	Ischaemic bowel disease (inoperable)	Not available	Not remarkable
11	Elderly control	96	No	II	3	114	Stroke and left ventricular failure	2 (mild)	Not remarkable
12	Elderly control	92	No	VI	5	74	Pneumonia	>2	Not remarkable
13	CAA case	93	Yes	VI	5	53	Stroke, general deterioration	13	Mild, some vessels with perivascular infiltrate
14	CAA case	73	Yes	IV	5	47	Frontal lobe dementia	1.3	Not remarkable
15	CAA case	76	Yes	VI	3	37	not applicable	8	Not remarkable
16	CAA case	87	Yes	VI	5	54	Aspiration pneumonia secondary to stroke	8	Not remarkable
17	CAA case	86	No	VI	5	47	not applicable	6	Not remarkable
18	CAA case	77	No	VI	2	63	Aspiration pneumonia	14	Not remarkable
19	CAA case	88	No	VI	5	84	Bronchopneumonia	15	Not remarkable

CAA, cerebral amyloid angiopathy.

### Quantitative proteomic analysis on human leptomeningeal arteries

For the proteomic analysis, samples from two young and two elderly subjects and four patients with CAA were randomly selected from the cohort (Table 1). The justification for this number of CAA cases was to compensate for their innate tissue heterogeneity and to ensure a statistical power of over 0.7, factoring in a representative 30% measurement error and a fold change >1.5 between replicate observations, as reported in a recent simulation study [32]. Samples were dissolved in dissolution buffer (0.5 M triethylammonium bicarbonate/0.05% sodium dodecyl sulphate), homogenized using the FastPrep system (Savant Bio, Cedex, Fr) and then subjected to pulsed probe sonication (Misonix, Farmingdale, NY, USA). Lysates were centrifuged (16 000 *g*, 10 min, 4°C) and supernatants were measured for protein content using the Direct Detect™ Spectroscopy system (Merck Millipore, Darmstadt, Germany) according to the manufacturer's instructions. From each lysate volume (adjusted to the highest volume of 40 µl) containing 100 µg final protein content was subjected to reduction, alkylation, trypsin proteolysis and eight-plex isobaric tag for relative and absolute quantitation (iTRAQ AbSciex, San Jose, CA, USA) labelling per supplier's specifications (ABSciex, San Jose, CA, USA). Labelled peptides were pooled and fractionated with high-pH reversed-phase (RP) chromatography using the Waters, XBridge C8 column (150 × 3 mm, 3.5 µm particle) with the Shimadzu LC-20AD HPLC (Shimadzu, Kyoto, Japan). Each resulting fraction was LC-MS analysed with low-pH RP capillary chromatography (PepMap C18, 50 µm ID × 50 cm L, 100 Å pore, 3.5 µm particle) and nanospray ionization FT-MS (Ultimate 3000 UHPLC – LTQ-Velos Pro Orbitrap Elite, Thermo Scientific, Bremen, DE) as reported previously [19,20,23] (Figure 1a).

Unprocessed raw files were submitted to Proteome Discoverer 1.4 for target decoy searching with SequestHT for tryptic peptides as reported by the authors [19,20,23]. Quantification ratios were normalized on the median value and log<sub>2</sub> transformed. A protein was considered modulated in leptomeningeal arteries from elderly subjects vs. young controls or those affected by CAA type 1 relative to these from young and elderly controls when its log<sub>2</sub> ratio was above or below ±1 SD across all analysed samples per category as reported previously [23].

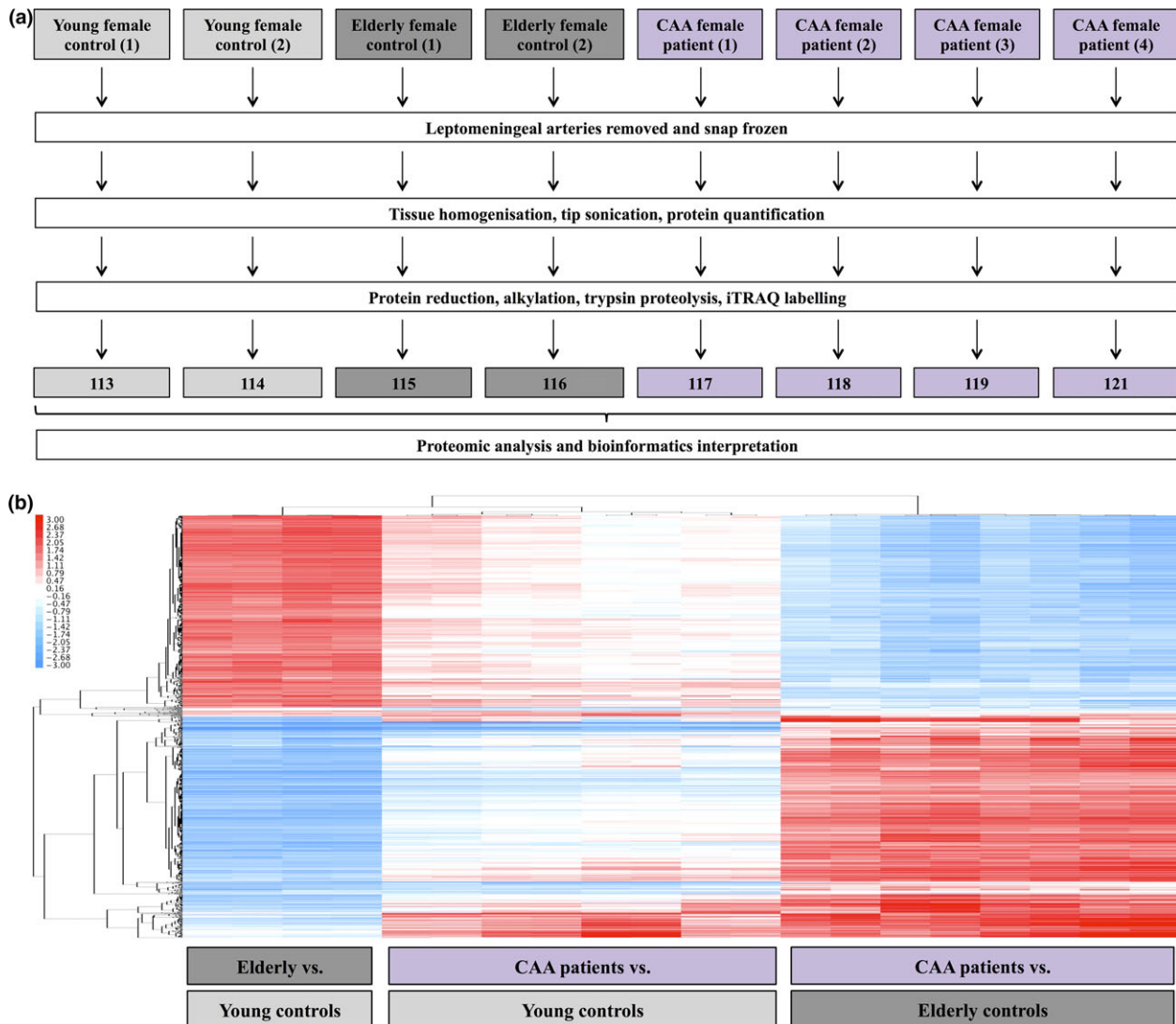
Hierarchical clustering analysis visualized in heat-map format was generated using Gene Cluster (version 3.0) and Java Treeview (version 1.1.6r4). MetaCore (GeneGo, St. Joseph, MI, USA) and DAVID (<http://david.abcc.ncifcrf.gov>) were applied to identify prebuilt processed networks and gene ontology terms over-represented in the modulated proteome. False discovery rate (FDR) and Fisher's exact corrected *P*-values ≤0.05 were considered significant.

### Immunohistochemistry

The immunohistochemistry validation of key proteomic findings was performed in all 19 subjects (young female controls: *n* = 5, elderly female controls: *n* = 7, females with CAA type 1: *n* = 7). Three sections of occipital cortex from each of the cases were immunostained. After dewaxing in xylene and rehydration through graded alcohols, antigen retrieval was performed by immersing slides in citrate buffer, microwaving on medium power for 25 min and subsequently cooling. This was followed by incubation in pepsin for 5 min (1 mg/ml 0.2 M HCl). The tissue was blocked in 3% H<sub>2</sub>O<sub>2</sub> and 15% goat serum. Occipital cortex from each of the cases was incubated in clusterin (Abcam: Cambridge, UK, ab42673, rabbit polyclonal, dilution 1:500), or tissue inhibitor of metalloproteinases 3 (TIMP3) (Abcam, Ab93637, rabbit polyclonal, dilution 1:100) overnight at 4°C followed by biotinylated goat anti-rabbit antibodies (Vector BA1000 dilution 1:200) and ABC peroxidase enzyme complex (Vector PK4000, dilution 1:500). Reaction was detected using diaminobenzidine with glucose oxidase enhancement. Images were captured on Olympus: Southend-on-Sea, Essex, UK, BX51 microscope fitted with Olympus CC-12 colour microscope camera.

Double immunofluorescence was performed for Aβ and TIMP3. Prior to the antigen retrieval previously described, pre-treatment was required which consisted of 5 min in formic acid at 37°C. Tissue was blocked in 15% goat serum followed by incubation in primary antibodies overnight at 4°C. Aβ was detected using mouse monoclonal anti-Aβ IgG2b Clone 4G8, antibody (BioLegend: London, UK, 800701; dilution 1:100). The secondary antibody for Aβ was goat anti-mouse IgG2b, AlexaFluor 647 (A-21242), and for TIMP 3 and clusterin was goat anti-rabbit IgG AlexaFluor 594 (A-27096). These were obtained from Thermo Fisher Scientific and dilution 1:200. Images were captured and





**Figure 1.** (a) Experimental pipeline of proteomics experiment. (b) Heatmap of differentially expressed proteins in leptomeningeal arteries of elderly controls compared to young controls, cerebral amyloid angiopathy (CAA) patients compared to young controls and CAA patients compared to elderly controls.

examined with a Leica SP8 confocal microscope. The specificity of the immunohistochemistry staining was confirmed by omitting the primary antibody.

## Results

### Quantitative proteomic analysis

The proteomic analysis resulted in the profiling of 5957 proteins (peptide FDR confidence  $\geq 99\%$ ) (Table S1). A total of 1364 proteins were differentially expressed in arteries from elderly relative to young

subjects (Table S2), 280 in arteries from CAA cases relative to young controls (Table S3) and another 983 in arteries from CAA cases relative to elderly controls (Table S4). The hierarchical clustering analysis of differentially expressed proteins between groups revealed that leptomeningeal arteries derived from CAA patients compared to those from young and elderly controls had a distinct proteomic profile from arteries derived from elderly compared to young subjects (Figure 1b).

*In silico* bioinformatics analysis showed that the *immune response/classical complement pathway* ( $P = 5.0E-11$ ;  $5.007E-2$ ;  $1.168E-10$  in elderly vs. young controls;

CAA vs. young controls; CAA vs. elderly controls respectively) (Figure 2) and *extracellular matrix remodelling* ( $P = 3.3E-8$ ;  $6.349E-6$ ;  $2.317E-8$  in elderly vs. young controls; CAA vs. young controls; CAA vs. elderly controls respectively) (Figure 3) were significantly over-represented processes. For both pathways, the expression levels of most proteins were found to decrease in arteries from elderly vs. young controls, whereas they increased in arteries from CAA patients compared to young and elderly controls.

The expression of clusterin (apolipoprotein J) and TIMP3 from the immune response/classical complement and the extracellular matrix remodelling pathways, respectively, were up-regulated in arteries from patients with CAA compared to both young and elderly controls [clusterin: iTRAQ mean log<sub>2</sub> ratio (SD) = 2.30 (0.45) and 2.87 (0.44) in CAA vs. young and CAA vs. elderly controls respectively] [TIMP3: iTRAQ mean log<sub>2</sub> ratio (SD) = 1.63 (0.89) and 2.48 (0.90) in CAA vs. young and CAA vs. elderly controls respectively].

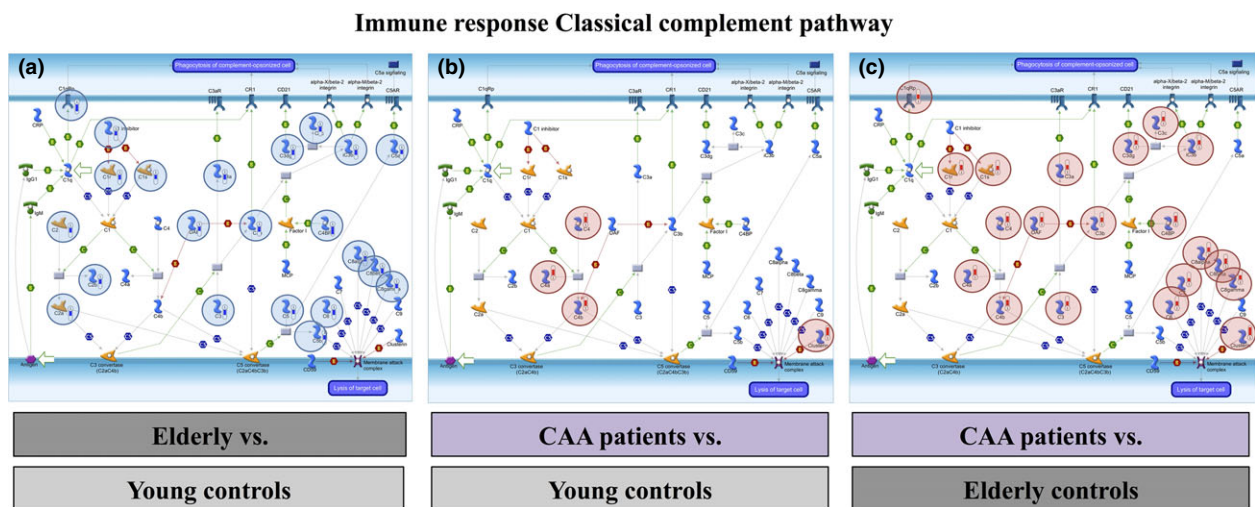
### Immunohistochemistry

Clusterin was found to co-localize with A $\beta$  in the occipital cortex of CAA cases, but not in the young or elderly controls (Figure 4). The pattern of expression for the immunocytochemistry of TIMP3 was weak in arteries from young controls, increased in elderly

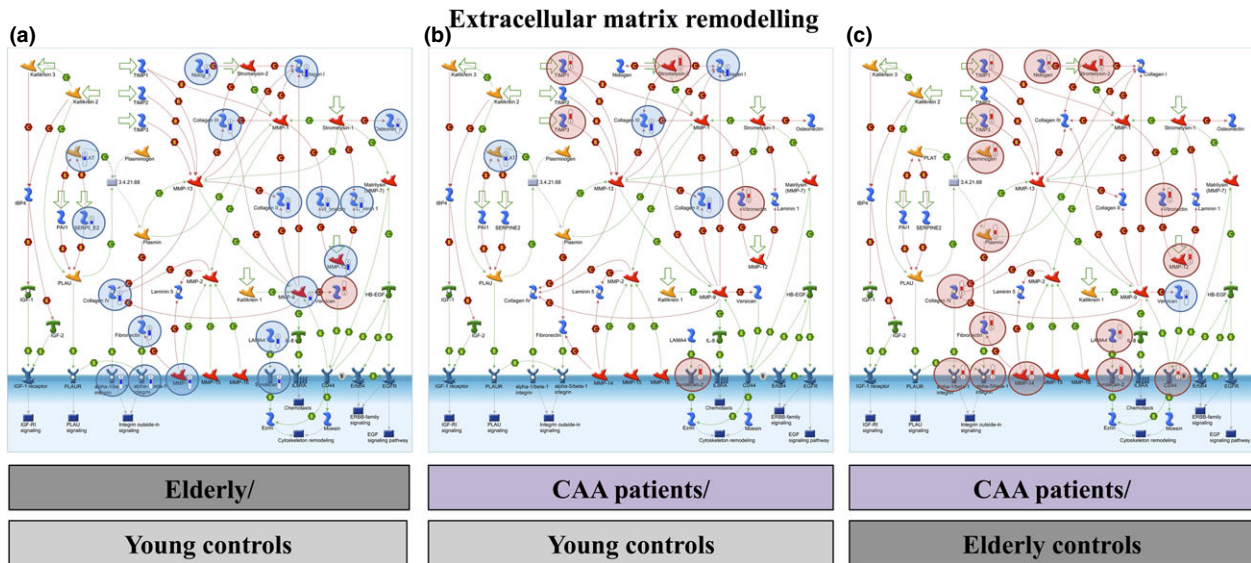
controls and was strong in CAA patients (Figure 5). TIMP3 and clusterin were found to co-localize with A $\beta$  in the leptomeningeal vessels of the occipital cortex from CAA cases (Figure 6).

### Discussion

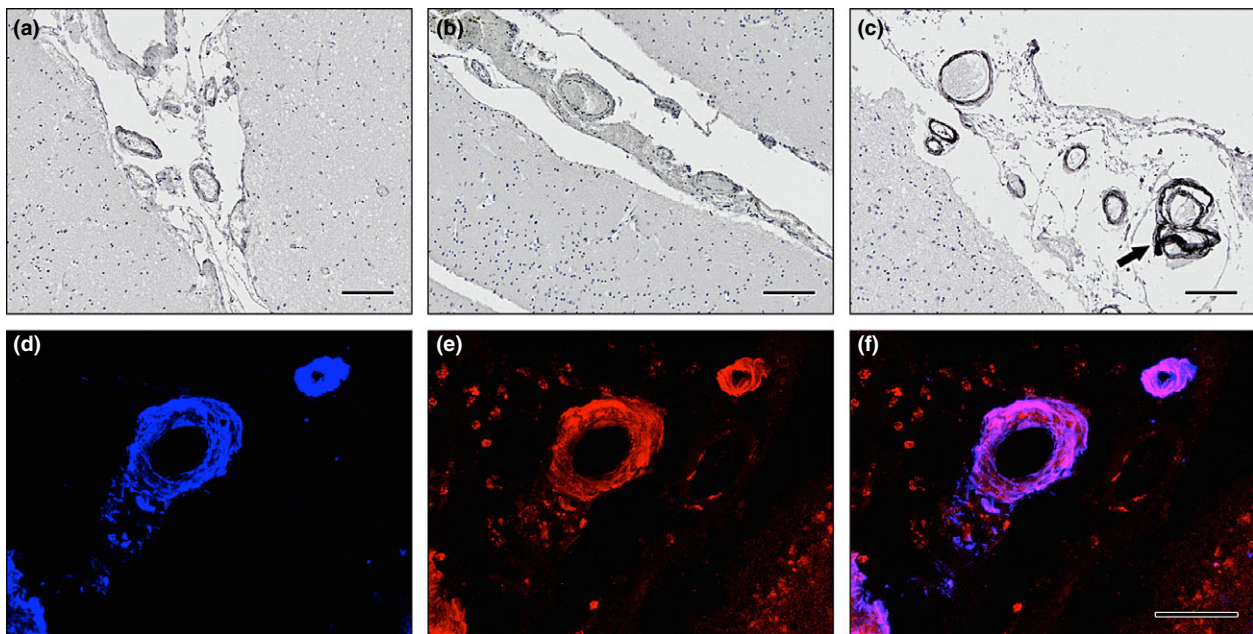
Our study showed that the global endophenotypic profile of leptomeningeal arteries from elderly female patients with severe CAA was different from that of age-matched and young controls. The immune response/classical complement and extracellular matrix remodelling pathways were significantly enriched in the differentially expressed proteome of arteries between patients with CAA compared to young and elderly controls. Most proteins participating in these pathways were up-regulated in leptomeningeal arteries from patients with CAA compared to these from controls, possibly reflecting a pro-inflammatory response in arteries affected by CAA, which could have in turn triggered tissue remodelling processes. The inflammatory profile of CAA is well characterized [33,34] and previous studies have described an increased activation of the complement system in cerebral amyloid plaques as well as deposition of complement components in CAA affected cerebral arteries [35–37]. Extracellular matrix components can influence the deposition of A $\beta$  thus contributing to Alzheimer's disease progression [38,39]. Conversely, A $\beta$  accumulation damages the



**Figure 2.** The immune response/classical complement pathway was significantly enriched in the differentially expressed proteome of leptomeningeal arteries from elderly vs. young controls ( $P = 5.0E-11$ ) (a), CAA patients compared to young controls ( $P = 5.007E-2$ ) (b) and cerebral amyloid angiopathy patients compared to elderly controls ( $P = 1.168E-10$ ) (c).



**Figure 3.** The extracellular matrix remodelling pathway was significantly enriched in the differentially expressed proteome of leptomeningeal arteries from elderly compared to young controls ( $P = 3.3E-8$ ) (a), cerebral amyloid angiopathy (CAA) patients compared to young controls ( $P = 6.349E-6$ ) (b) and CAA patients compared to elderly controls ( $P = 2.317E-8$ ) (c).

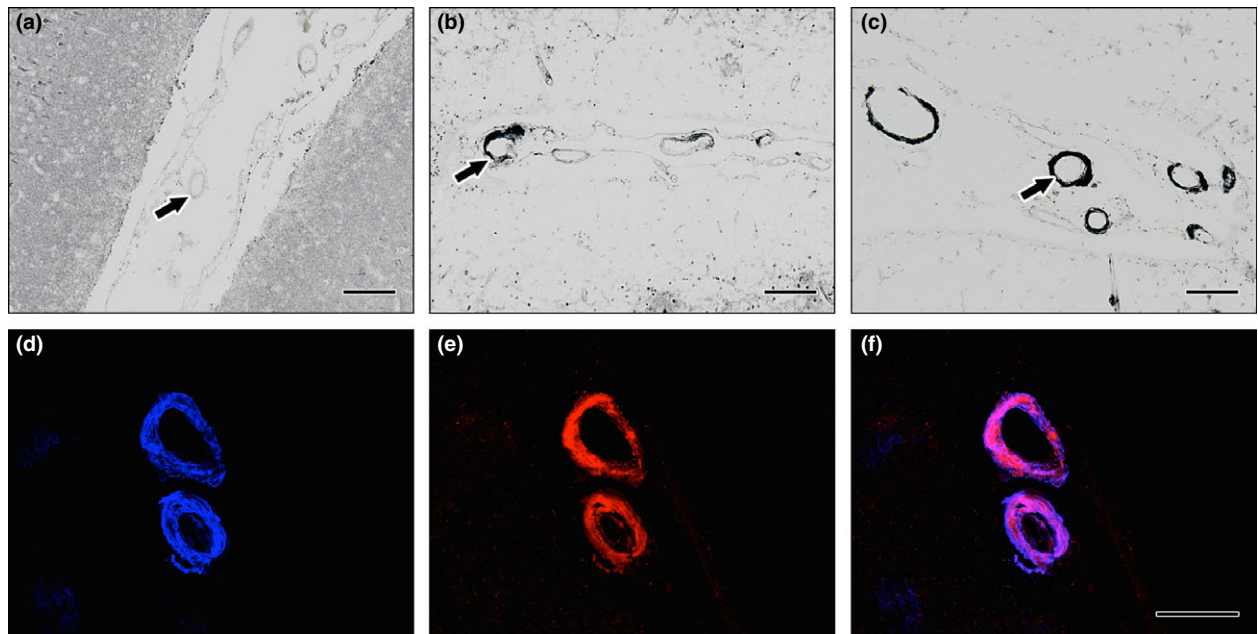


**Figure 4.** Immunohistochemistry of clusterin. DAB with haematoxylin counterstain in (a) young and (b) elderly controls and (c) cerebral amyloid angiopathy (CAA). The intensity of immunostaining of clusterin is increased in the leptomeningeal vessels present in the sulci in elderly control cases compared to young cases and in CAA compared to elderly control cases. Immunofluorescence for A $\beta$  and clusterin in leptomeningeal arteries in CAA (d–e). A $\beta$  immunofluorescence (blue) in (d) is present in the whole thickness of the arterial wall in a concentric manner; clusterin immunofluorescence (red) in (e) is also present throughout the thickness of the arterial wall; co-localization (pink) of A $\beta$  and clusterin occupies most of the thickness of the arterial walls in (f). Scale bars: (a–c) = 100  $\mu$ m/(d–f) = 50  $\mu$ m.

integrity of existing extracellular matrix, which affects brain microvascular functions during the early stages of Alzheimer's disease [40–42].

The study results show that clusterin co-localizes with A $\beta$  within the walls of leptomeningeal arteries and its expression levels increase in leptomeningeal



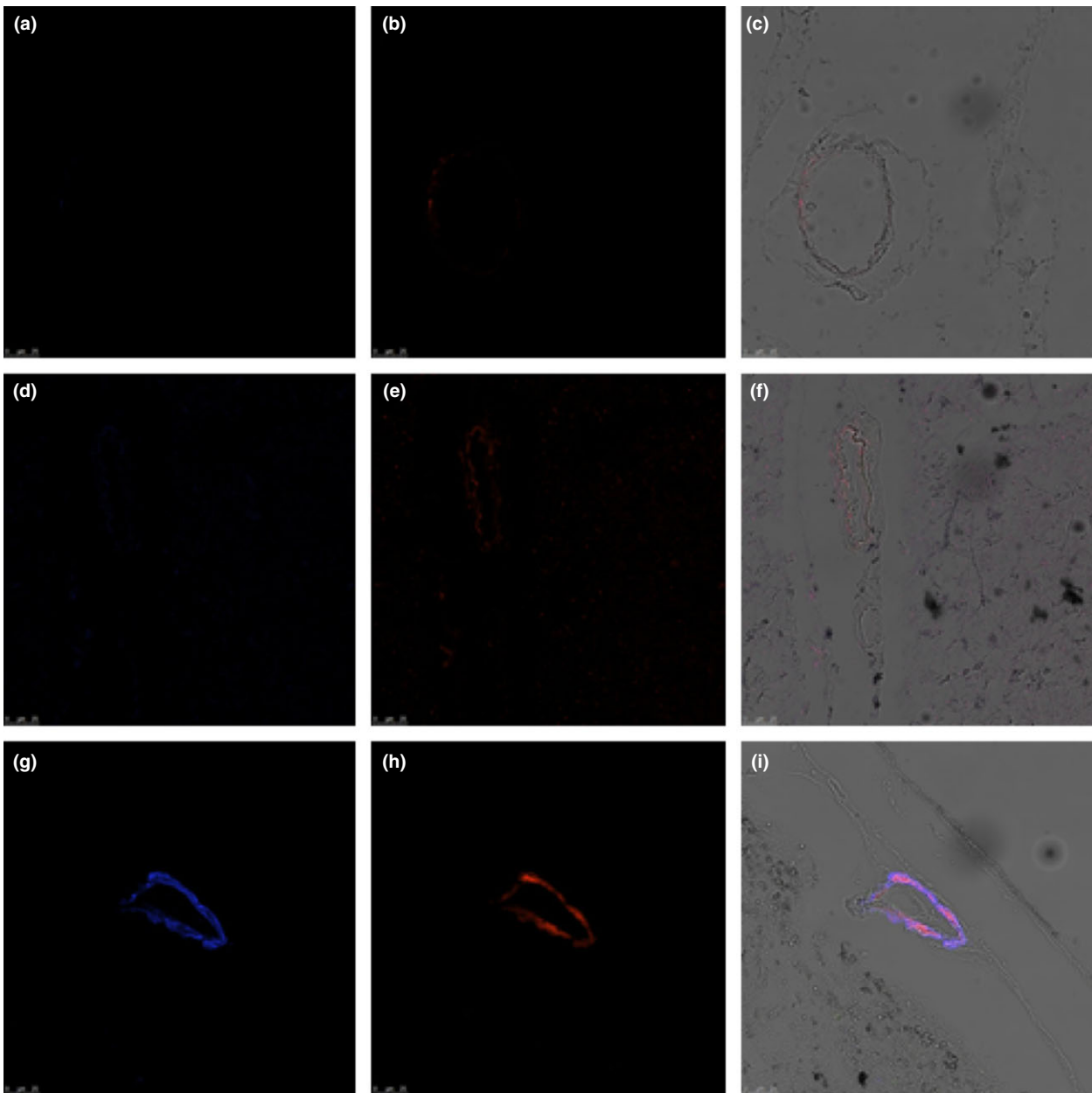


**Figure 5.** Immunohistochemistry of tissue inhibitor of metalloproteinases 3 (TIMP3) in leptomeningeal arteries. DAB with haematoxylin counterstain in (a) young and (b) elderly controls and (c) cerebral amyloid angiopathy (CAA). The intensity of immunostaining of TIMP3 is increased in the leptomeningeal vessels present in the sulci of elderly control cases compared to young and in CAA cases compared to elderly. Immunofluorescence for A $\beta$  and TIMP3 in leptomeningeal arteries in CAA (d–e). A $\beta$  immunofluorescence (blue) in (d) is present in the whole thickness of the arterial wall in a concentric manner; TIMP3 immunofluorescence (red) in (e) is also present throughout the thickness of the arterial wall; co-localization (pink) of A $\beta$  and TIMP3 occupies most of the thickness of the arterial walls, especially concentrated in the tunica media, with less in the endothelium and outer layers of the wall (f). Scale bars: (a–c) = 100  $\mu$ m/(d–f) = 50  $\mu$ m.

arteries from patients with CAA compared to those from young and elderly controls. Clusterin (apolipoprotein J or ApoJ) is a disulphide-linked heterodimeric glycoprotein that activates microglia, initiating an inflammatory cascade [43]. Genome-wide association studies of sporadic Alzheimer's disease, in which A $\beta$  accumulates both in cortical plaques and CAA, have highlighted the importance of common genetic variations in the gene encoding clusterin [44]. Experimental work suggests that clusterin regulates A $\beta$  fibril formation [45] and plays a major role in the clearance of A $\beta$ 42–ApoJ complexes, via LRP2 [46–48]. Although the predominant species of A $\beta$  in CAA is A $\beta$ 40, with progressive failure of perivascular clearance of interstitial fluid, there is also accumulation of A $\beta$ 42 [49]. Clusterin appears to be sequestered with A $\beta$  species in the vascular amyloid deposits in sporadic CAA, as well as in the white matter abnormalities in cerebral autosomal dominant arteriopathy with subcortical infarcts and leukoencephalopathy (CADASIL) [50,51]. A recent study found a significant

positive correlation between clusterin concentration and regional levels of insoluble A $\beta$ 42 [52]. It is therefore possible that the up-regulation of clusterin observed in the CAA arteries, is due to either entrapment of the A $\beta$ –ApoJ complex in the perivascular drainage pathways, or a compensatory up-regulation of ApoJ to clear the excess A $\beta$ 42 that cannot be eliminated normally.

In this study, we demonstrated that the expression of TIMP3 in the brain is restricted to the walls of leptomeningeal arteries and increases in CAA. Homeostasis of the extracellular matrix in the brain is maintained by the balanced action of matrix metalloproteinases that degrade extracellular matrix and by tissue inhibitors of metalloproteinases (TIMP) proteins. Human TIMP3 is a 25-kDa protein that contains disulphide bonds and is expressed in normal central nervous system [53]. In a study by Hoe *et al.* [54], TIMP3 expression was found to increase in human brains affected by Alzheimer's disease (AD). Furthermore, this study showed that TIMP3 prevents  $\alpha$ -



**Figure 6.** Confocal microscopy images showing distribution of tissue inhibitor of metalloproteinases 3 (TIMP3) (blue) and A $\beta$  (red) in leptomeningeal arteries from young (a–c) and elderly females (d–f) and patients with cerebral amyloid angiopathy (CAA) (g–i). Co-localization of A $\beta$  and TIMP3 is observed in CAA, on transmission merged images (c–i). Images obtained with  $\times 20$  objective. False colour applied to channels.

cleavage of amyloid precursor protein (APP), whereas it promotes  $\beta$ -cleavage of APP thus contributing to elevated A $\beta$  levels in AD. TIMP3 preserves the integrity of extracellular matrix in arteries as the absence of TIMP3 in knock-out mice results in pathological arterial vasodilation [55]. Our results showed that

expression of TIMP3 in the brain is restricted to the walls of leptomeningeal, thus antagonistically targeting TIMP-3 could also facilitate perivascular drainage of A $\beta$ . Examining this hypothesis was beyond the scope of the present study and constitutes a future objective.

In conclusion, this proteomic study demonstrates the activation of inflammatory and extracellular matrix remodelling pathways in human leptomeningeal arteries from CAA patients compared to these from cognitively normal young and elderly controls. Furthermore, we observed increased levels of clusterin and TIMP3 in leptomeningeal arteries from CAA patients compared to young and elderly controls and co-localization of these two proteins with A $\beta$  in the occipital cortex of the CAA cases. Future work will test the hypothesis that clusterin and TIMP3 could facilitate perivascular clearance and represent novel therapeutic targets for CAA.

### Acknowledgements

We are indebted to Mr. Roger Allsopp, Mr. Derek Coates and Hope for Guernsey for their fund raising and vision in establishing a clinical mass spectrometry laboratory at the University of Southampton. This study was funded by the BBSRC, Rosetrees Trust and the Wessex Cancer Trust and Medical Research, UK. The authors are grateful to the support of King Saud University, Deanship of Scientific Research Chair, Prince Mutaib Bin Abdullah Chair for Biomarkers of Osteoporosis, College of Science, as well as the Visiting Professor Program of King Saud University, Riyadh, Saudi Arabia. Tissue for this study was provided by the Newcastle Brain Tissue Resource, which is funded in part by a grant from the UK Medical Research Council (grant number G0400074) and by Brains for Dementia Research, a joint venture between Alzheimer's Society and Alzheimer's Research UK.

### Author contributions

AM performed the proteomic experiments, interpreted the results and wrote manuscript. MG performed the immunohistochemistry experiments and interpreted the results. CHW performed the bioinformatics analysis. CS and JARN interpreted the results and edited the manuscript. MJ, RK and JA provided the samples and edited the manuscript. SDG designed the proteomic experiments, supervised their execution, interpreted the results and wrote manuscript. ROC conceived the study, funded the study, designed the immunohistochemistry experiments, interpreted the results and wrote manuscript.

### Conflicts of interest

None declared.

### References

- 1 Attems J, Jellinger K, Thal DR, Van Nostrand W. Review: sporadic cerebral amyloid angiopathy. *Neuropathol Appl Neurobiol* 2011; **37**: 75–93
- 2 Love S, Chalmers K, Ince P, Esiri M, Attems J, Jellinger K, Yamada M, McCarron M, Minett T, Matthews F, Greenberg S, Mann D, Kehoe PG. Development, appraisal, validation and implementation of a consensus protocol for the assessment of cerebral amyloid angiopathy in post-mortem brain tissue. *Am J Neurodegen Dis* 2014; **3**: 19–32
- 3 Alafuzoff I, Thal DR, Arzberger T, Bogdanovic N, Al-Sarraj S, Bodi I, Boluda S, Bugiani O, Duyckaerts C, Gelpi E, Gentleman S, Giaccone G, Graeber M, Hortobagyi T, Höftberger R, Ince P, Ironside JW, Kavantzias N, King A, Korkolopoulou P, Kovács GG, Meyronet D, Monoranu C, Nilsson T, Parchi P, Patouris E, Pikkarainen M, Revesz T, Rozemuller A, Seilhean D, Schulz-Schaeffer W, Streichenberger N, Wharton SB, Kretschmar H. Assessment of beta-amyloid deposits in human brain: a study of the BrainNet Europe Consortium. *Acta Neuropathol* 2009; **117**: 309–20
- 4 Preston SD, Steart PV, Wilkinson A, Nicoll JA, Weller RO. Capillary and arterial cerebral amyloid angiopathy in Alzheimer's disease: defining the perivascular route for the elimination of amyloid beta from the human brain. *Neuropathol Appl Neurobiol* 2003; **29**: 106–17
- 5 Tian J, Shi J, Smallman R, Iwatsubo T, Mann DM. Relationships in Alzheimer's disease between the extent of Abeta deposition in cerebral blood vessel walls, as cerebral amyloid angiopathy, and the amount of cerebrovascular smooth muscle cells and collagen. *Neuropathology Appl Neurobiol* 2006; **32**: 332–40
- 6 Weller RO, Subash M, Preston SD, Mazanti I, Carare RO. Perivascular drainage of amyloid-beta peptides from the brain and its failure in cerebral amyloid angiopathy and Alzheimer's disease. *Brain Pathol* 2008; **18**: 253–66
- 7 Cirrito JR, Deane R, Fagan AM, Spinner ML, Parsadanian M, Finn MB, Jiang H, Prior JL, Sagare A, Bales KR, Paul SM, Zlokovic BV, Piwnicka-Worms D, Holtzman DM. P-glycoprotein deficiency at the blood-brain barrier increases amyloid-beta deposition in an Alzheimer disease mouse model. *J Clin Invest* 2005; **115**: 3285–90
- 8 Deane R, Wu Z, Sagare A, Davis J, Du Yan S, Hamm K, Xu F, Parisi M, LaRue B, Hu HW, Spijkers P, Guo H, Song X, Lenting PJ, Van Nostrand WE, Zlokovic BV. LRP/amyloid beta-peptide interaction mediates

- differential brain efflux of Abeta isoforms. *Neuron* 2004; **43**: 333–44
- 9 Miners JS, Baig S, Palmer J, Palmer LE, Kehoe PG, Love S. Abeta-degrading enzymes in Alzheimer's disease. *Brain Pathol* 2008; **18**: 240–52
  - 10 Tarasoff-Conway JM, Carare RO, Osorio RS, Glodzik L, Butler T, Fieremans E, Axel L, Rusinek H, Nicholson C, Zlokovic BV, Frangione B, Blennow K, Ménard J, Zetterberg H, Wisniewski T, de Leon MJ. Clearance systems in the brain-implications for Alzheimer disease. *Nat Rev Neurol* 2015; **11**: 457–70
  - 11 Carare RO, Bernardes-Silva M, Newman TA, Page AM, Nicoll JA, Perry VH, Weller RO. Solutes, but not cells, drain from the brain parenchyma along basement membranes of capillaries and arteries: significance for cerebral amyloid angiopathy and neuroimmunology. *Neuropathol Appl Neurobiol* 2008; **34**: 131–44
  - 12 Hawkes CA, Gatherer M, Sharp MM, Dorr A, Yuen HM, Kalaria R, Weller RO, Carare RO. Regional differences in the morphological and functional effects of aging on cerebral basement membranes and perivascular drainage of amyloid-beta from the mouse brain. *Aging Cell* 2013; **12**: 224–36
  - 13 Hawkes CA, Hartig W, Kacza J, Schliebs R, Weller RO, Nicoll JA, Carare RO. Perivascular drainage of solutes is impaired in the ageing mouse brain and in the presence of cerebral amyloid angiopathy. *Acta Neuropathol* 2011; **121**: 431–43
  - 14 Hawkes CA, Sullivan PM, Hands S, Weller RO, Nicoll JA, Carare RO. Disruption of arterial perivascular drainage of amyloid-beta from the brains of mice expressing the human APOE epsilon4 allele. *PLoS ONE* 2012; **7**: e41636
  - 15 Galanos P, Vougas K, Walter D, Polyzos A, Maya-Mendoza A, Haagenen EJ, Kokkalis A, Roumelioti FM, Gagos S, Tzetzis M, Canovas B, Igea A, Ahuja AK, Zellweger R, Havaki S, Kanavakis E, Kletsas D, Roninson IB, Garbis SD, Lopes M, Nebreda A, Thanos D, Blow JJ, Townsend P, Sørensen CS, Bartek J, Gorgoulis VG. Chronic p53-independent p21 expression causes genomic instability by deregulating replication licensing. *Nat Cell Biol* 2016; **18**: 777–89. [Epub ahead of print]
  - 16 Giannogonas P, Apostolou A, Manousopoulou A, Theocharis S, Macari SA, Psarras S, Garbis SD, Pothoulakis C, Karalis KP. Identification of a novel interaction between corticotropin releasing hormone (Crh) and macroautophagy. *Sci Rep* 2016; **6**: 23342
  - 17 White CH, Johnston HE, Moesker B, Manousopoulou A, Margolis DM, Richman DD, Spina CA, Garbis SD, Woelk CH, Beliakova-Bethell N. Mixed effects of suberoylanilide hydroxamic acid (SAHA) on the host transcriptome and proteome and their implications for HIV reactivation from latency. *Antiviral Res* 2015; **123**: 78–85
  - 18 Delehouzé C, Godl K, Loaëc N, Bruyère C, Desban N, Oumata N, Galons H, Roumeliotis TI, Giannopoulou EG, Grenet J, Twitchell D, Lahti J, Mouchet N, Galibert MD, Garbis SD, Meijer L. CDK/CK1 inhibitors roscovitine and CR8 downregulate amplified MYCN in neuroblastoma cells. *Oncogene* 2014; **33**: 5675–87
  - 19 Manousopoulou A, Saito S, Yamamoto Y, Al-Daghri NM, Ihara M, Carare RO, Garbis SD. Hemisphere asymmetry of response to pharmacologic treatment in an Alzheimer's disease mouse model. *J Alz Dis* 2016; **51**: 333–8
  - 20 Manousopoulou A, Koutmani Y, Karaliota S, Woelk CH, Manolakos ES, Karalis K, Garbis SD. Hypothalamus proteomics from mouse models with obesity and anorexia reveals therapeutic targets of appetite regulation. *Nutr Diabetes* 2016; **6**: e204
  - 21 Al-Daghri NM, Al-Attas OS, Johnston HE, Singhanian A, Alokail MS, Alkharfy KM, Abd-Alrahman SH, Sabico SL, Roumeliotis TI, Manousopoulou-Garbis A, Townsend PA, Woelk CH, Chrousos GP, Garbis SD. Whole serum 3D LC-nESI-FTMS quantitative proteomics reveals sexual dimorphism in the milieu intérieur of overweight and obese adults. *J Proteome Res* 2014; **13**: 5094–105
  - 22 Hanley CJ, Noble F, Ward M, Bullock M, Drifka C, Mellone M, Manousopoulou A, Johnston HE, Hayden A, Thirdborough S, Liu Y, Smith DM, Mellows T, Kao WJ, Garbis SD, Mirnezami A, Underwood TJ, Eliceiri KW, Thomas GJ. A subset of myofibroblastic cancer-associated fibroblasts regulate collagen fiber elongation, which is prognostic in multiple cancers. *Oncotarget* 2016; **7**: 6159–74
  - 23 Manousopoulou A, Woo J, Woelk CH, Johnston HE, Singhanian A, Hawkes C, Garbis SD, Carare RO. Are you also what your mother eats? Distinct proteomic portrait as a result of maternal high-fat diet in the cerebral cortex of the adult mouse. *Int J Obes (Lond)* 2015; **39**: 1325–8
  - 24 Braak H, Alafuzoff I, Arzberger T, Kretschmar H, Del Tredici K. Staging of Alzheimer disease-associated neurofibrillary pathology using paraffin sections and immunocytochemistry. *Acta Neuropathol* 2006; **112**: 389–404
  - 25 Thal DR, Rub U, Orantes M, Braak H. Phases of A beta-deposition in the human brain and its relevance for the development of AD. *Neurology* 2002; **58**: 1791–800
  - 26 Mirra SS, Heyman A, McKeel D, Sumi SM, Crain BJ, Brownlee LM, Vogel FS, Hughes JP, van Belle G, Berg L. The Consortium to Establish a Registry for Alzheimer's Disease (CERAD). Part II. Standardization of the neuropathologic assessment of Alzheimer's disease. *Neurology* 1991; **41**: 479–86
  - 27 Montine TJ, Phelps CH, Beach TG, Bigio EH, Cairns NJ, Dickson DW, Duyckaerts C, Frosch MP, Masliah E, Mirra SS, Nelson PT, Schneider JA, Thal DR, Trojanowski JQ, Vinters HV, Hyman BT, National Institute on Aging; Alzheimer's Association. National



- Institute on Aging–Alzheimer's Association guidelines for the neuropathologic assessment of Alzheimer's disease: a practical approach. *Acta Neuropathol* 2012; **123**: 1–11
- 28 McKeith IG, Dickson DW, Lowe J, Emre M, O'Brien JT, Feldman H, Cummings J, Duda JE, Lippa C, Perry EK, Aarsland D, Arai H, Ballard CG, Boeve B, Burn DJ, Costa D, Del ST, Dubois B, Galasko D, Gauthier S, Goetz CG, Gomez-Tortosa E, Halliday G, Hansen LA, Hardy J, Iwatsubo T, Kalaria RN, Kaufer D, Kenny RA, Korczyn A, Kosaka K, Lee VM, Lees A, Litvan I, Londos E, Lopez OL, Minoshima S, Mizuno Y, Molina JA, Mukaetova-Ladinska EB, Pasquier F, Perry RH, Schulz JB, Trojanowski JQ, Yamada M. Consortium on DLB. Diagnosis and management of dementia with Lewy bodies: third report of the DLB Consortium. *Neurology* 2005; **65**: 1863–72
  - 29 Barnes LL, Wilson RS, Bienias JL, Schneider JA, Evans DA, Bennett DA. Sex differences in the clinical manifestations of Alzheimer disease pathology. *Arch Gen Psychiatry* 2005; **62**: 685–91
  - 30 Corder EH, Ghebremedhin E, Taylor MG, Thal DR, Ohm TG, Braak H. The biphasic relationship between regional brain senile plaque and neurofibrillary tangle distributions: modification by age, sex, and APOE polymorphism. *Ann N Y Acad Sci* 2004; **1019**: 24–8
  - 31 Shinohara M, Murray ME, Frank RD, Shinohara M, DeTure M, Yamazaki Y, Tachibana M, Atagi Y, Davis MD, Liu CC, Zhao N, Painter MM, Petersen RC, Fryer JD, Crook JE, Dickson DW, Bu G, Kanekiyo T. Impact of sex and APOE4 on cerebral amyloid angiopathy in Alzheimer's disease. *Acta Neuropathol* 2016; **132**: 225–34. [Epub ahead of print]
  - 32 Levin Y. The role of statistical power analysis in quantitative proteomics. *Proteomics* 2011; **11**: 2565–7
  - 33 Heneka MT, Carson MJ, El Khoury J, Landreth GE, Brosseron F, Feinstein DL, Jacobs AH, Wyss-Coray T, Vitorica J, Ransohoff RM, Herrup K, Frautschy SA, Finsen B, Brown GC, Verkhratsky A, Yamanaka K, Koistinaho J, Latz E, Halle A, Petzold GC, Town T, Morgan D, Shinohara ML, Perry VH, Holmes C, Bazan NG, Brooks DJ, Hunot S, Joseph B, Deigendesch N, Garaschuk O, Boddeke E, Dinarello CA, Breitner JC, Cole GM, Golenbock DT, Kummer MP. Neuroinflammation in Alzheimer's disease. *Lancet Neurol* 2015; **14**: 388–405
  - 34 Zotova E, Bharambe V, Cheaveau M, Morgan W, Holmes C, Harris S, Neal JW, Love S, Nicoll JA, Boche D. Inflammatory components in human Alzheimer's disease and after active amyloid-beta42 immunization. *Brain* 2013; **136**: 2677–96
  - 35 Gasque P, Neal JW, Singhrao SK, McGreal EP, Dean YD, Van BJ, Morgan BP. Roles of the complement system in human neurodegenerative disorders: pro-inflammatory and tissue remodeling activities. *Mol Neurobiol* 2002; **25**: 1–17
  - 36 van Beek J, Elward K, Gasque P. Activation of complement in the central nervous system: roles in neurodegeneration and neuroprotection. *Ann N Y Acad Sci* 2003; **992**: 56–71
  - 37 Tanskanen M, Lindsberg PJ, Tienari PJ, Polvikoski T, Sulkava R, Verkkoniemi A, Rastas S, Paetau A, Kiuru-Enari S. Cerebral amyloid angiopathy in a 95 + cohort: complement activation and apolipoprotein E (ApoE) genotype. *Neuropathol Appl Neurobiol* 2005; **31**: 589–99
  - 38 Ariga T, Miyatake T, Yu RK. Role of proteoglycans and glycosaminoglycans in the pathogenesis of Alzheimer's disease and related disorders: amyloidogenesis and therapeutic strategies—a review. *J Neurosci Res* 2010; **88**: 2303–15
  - 39 Genedani S, Agnati LF, Leo G, Buzzega D, Maccari F, Carone C, Andreoli N, Filafferro M, Volpi N. beta-Amyloid fibrillation and/or hyperhomocysteinemia modify striatal patterns of hyaluronic acid and dermatan sulfate: possible role in the pathogenesis of Alzheimer's disease. *Curr Alzheimer Res* 2010; **7**: 150–7
  - 40 Ajmo JM, Bailey LA, Howell MD, Cortez LK, Penny-packer KR, Mehta HN, Morgan D, Gordon MN, Gottschall PE. Abnormal post-translational and extracellular processing of brevican in plaque-bearing mice over-expressing APPsw. *J Neurochem* 2010; **113**: 784–95
  - 41 Sykova E, Vorisek I, Antonova T, Mazel T, Meyer-Luehmann M, Jucker M, Hajek M, Ort M, Bures J. Changes in extracellular space size and geometry in APP23 transgenic mice: a model of Alzheimer's disease. *Proc Natl Acad Sci U S A* 2005; **102**: 479–84
  - 42 Lepelletier FX, Mann DM, Robinson AC, Pinteaux E, Boutin H. Early changes in extracellular matrix in Alzheimer's disease. *Neuropathol Appl Neurobiol* 2015; doi: 10.1111/nan.12295. [Epub ahead of print]
  - 43 Xie Z, Harris-White ME, Wals PA, Frautschy SA, Finch CE, Morgan TE. Apolipoprotein J (clusterin) activates rodent microglia *in vivo* and *in vitro* 1. *J Neurochem* 2005; **93**: 1038–46
  - 44 Harold D, Abraham R, Hollingworth P, Sims R, Gerish A, Hamshere ML, Pahwa JS, Moskvin V, Dowzell K, Williams A, Jones N, Thomas C, Stretton A, Morgan AR, Lovestone S, Powell J, Proitsi P, Lupton MK, Brayne C, Rubinsztein DC, Gill M, Lawlor B, Lynch A, Morgan K, Brown KS, Passmore PA, Craig D, McGuinness B, Todd S, Holmes C, Mann D, Smith AD, Love S, Kehoe PG, Hardy J, Mead S, Fox N, Rossor M, Collinge J, Maier W, Jessen F, Schürmann B, Heun R, van den Bussche H, Heuser I, Kornhuber J, Wiltfang J, Dichgans M, Frölich L, Hampel H, Hüll M, Rujescu D, Goate AM, Kauwe JS, Cruchaga C, Nowotny P, Morris JC, Mayo K, Sleegers K, Bettens K, Engelborghs S, De Deyn PP, Van Broeckhoven C, Livingston G, Bass NJ, Gurling H, McQuillin A, Gwilliam R, Deloukas P, Al-Chalabi A, Shaw CE, Tsolaki M, Singleton AB,

- Guerreiro R, Mühleisen TW, Nöthen MM, Moebus S, Jöckel KH, Klopp N, Wichmann HE, Carrasquillo MM, Pankratz VS, Younkin SG, Holmans PA, O'Donovan M, Owen MJ, Williams J. Genome-wide association study identifies variants at CLU and PICALM associated with Alzheimer's disease. *Nat Genet* 2009; **41**: 1088–93
- 45 Yu JT, Tan L. The role of clusterin in Alzheimer's disease: pathways, pathogenesis, and therapy. *Mol Neurobiol* 2012; **45**: 314–26
- 46 Bell RD, Sagare AP, Friedman AE, Bedi GS, Holtzman DM, Deane R, Zlokovic BV. Transport pathways for clearance of human Alzheimer's amyloid beta-peptide and apolipoproteins E and J in the mouse central nervous system. *J Cereb Blood Flow Metab* 2007; **27**: 909–18
- 47 Calero M, Rostagno A, Matsubara E, Zlokovic B, Frangiione B, Ghiso J. Apolipoprotein J (clusterin) and Alzheimer's disease. *Microsc Res Tech* 2000; **50**: 305–15
- 48 Ladu MJ, Reardon C, Van Eldik L, Fagan AM, Bu G, Holtzman D, Getz GS. Lipoproteins in the central nervous system. *An N Y Acad Sci* 2000; **903**: 167–75
- 49 Soontornniyomkij V, Choi C, Pomakian J, Vinters HV. High-definition characterization of cerebral beta-amyloid angiopathy in Alzheimer's disease. *Hum Pathol* 2010; **41**: 1601–8
- 50 Craggs L, Taylor J, Slade JY, Chen A, Hagel C, Kuhlenbaeumer G, Borjesson-Hanson A, Viitanen M, Kalimo H, Deramecourt V, Oakley AE, Kalaria RN. Clusterin/Apolipoprotein J immunoreactivity is associated with white matter damage in cerebral small vessel diseases. *Neuropathol Appl Neurobiol* 2016; **42**: 194–209
- 51 Howlett DR, Hortobagyi T, Francis PT. Clusterin associates specifically with Abeta40 in Alzheimer's disease brain tissue. *Brain Pathol* 2013; **23**: 623–32
- 52 Miners JS, Clarke P, Love S. Clusterin levels are increased in Alzheimer's disease and influence the regional distribution of A $\beta$ . *Brain Pathol* 2016; doi: 10.1111/bpa.12392. [Epub ahead of print]
- 53 Kishnani NS, Staskus PW, Yang TT, Masiarz FR, Hawkes SP. Identification and characterization of human tissue inhibitor of metalloproteinase-3 and detection of three additional metalloproteinase inhibitor activities in extracellular matrix. *Matrix Biol* 1995; **14**: 479–88
- 54 Hoe HS, Cooper MJ, Burns MP, Lewis PA, van der Brug M, Chakraborty G, Cartagena CM, Pak DT, Cookson MR, Rebeck GW. The metalloprotease inhibitor TIMP-3 regulates amyloid precursor protein and apolipoprotein E receptor proteolysis. *J Neurosci* 2007; **27**: 10895–905
- 55 Basu R, Lee J, Morton JS, Takawale A, Fan D, Kandalam V, Wang X, Davidge ST, Kassiri Z. TIMP3 is the primary TIMP to regulate agonist-induced vascular remodelling and hypertension. *Cardiovasc Res* 2013; **98**: 360–71

### Supporting information

Additional Supporting Information may be found in the online version of this article at the publisher's web-site:

**Table S1.** Total proteome (peptide FDR confidence > 99%) (log<sub>2</sub> ratio).

**Table S2.** Differentially expressed proteins in leptomeningeal arteries from elderly vs. young controls (log<sub>2</sub> ratio).

**Table S3.** Differentially expressed proteins in leptomeningeal arteries from CAA patients vs. young controls (log<sub>2</sub> ratio).

**Table S4.** Differentially expressed proteins in leptomeningeal arteries from CAA patients vs. age-matched controls (log<sub>2</sub> ratio).

Received 23 February 2016

Accepted after revision 16 August 2016

Published online Article Accepted on 20 August 2016