



THE UNIVERSITY *of* EDINBURGH

Edinburgh Research Explorer

## Effect of manipulating recombination rates on response to selection in livestock breeding programs

### Citation for published version:

Battagin, M, Gorjanc, G, Faux, A-M, Johnston, SE & Hickey, JM 2016, 'Effect of manipulating recombination rates on response to selection in livestock breeding programs', *Genetics Selection Evolution*, vol. 48, no. 1, pp. 44. <https://doi.org/10.1186/s12711-016-0221-1>

### Digital Object Identifier (DOI):

[10.1186/s12711-016-0221-1](https://doi.org/10.1186/s12711-016-0221-1)

### Link:

[Link to publication record in Edinburgh Research Explorer](#)

### Document Version:

Publisher's PDF, also known as Version of record

### Published In:

Genetics Selection Evolution

### Publisher Rights Statement:

© 2016 The Author(s). This article is distributed under the terms of the Creative Commons Attribution 4.0 International License (<http://creativecommons.org/licenses/by/4.0/>), which permits unrestricted use, distribution, and reproduction in any medium, provided you give appropriate credit to the original author(s) and the source, provide a link to the Creative Commons license, and indicate if changes were made. The Creative Commons Public Domain Dedication waiver (<http://creativecommons.org/publicdomain/zero/1.0/>) applies to the data made available in this article, unless otherwise stated.

### General rights

Copyright for the publications made accessible via the Edinburgh Research Explorer is retained by the author(s) and / or other copyright owners and it is a condition of accessing these publications that users recognise and abide by the legal requirements associated with these rights.

### Take down policy

The University of Edinburgh has made every reasonable effort to ensure that Edinburgh Research Explorer content complies with UK legislation. If you believe that the public display of this file breaches copyright please contact [openaccess@ed.ac.uk](mailto:openaccess@ed.ac.uk) providing details, and we will remove access to the work immediately and investigate your claim.



RESEARCH ARTICLE

Open Access



# Effect of manipulating recombination rates on response to selection in livestock breeding programs

Mara Battagin<sup>1</sup>, Gregor Gorjanc<sup>1</sup>, Anne-Michelle Faux<sup>1</sup>, Susan E. Johnston<sup>2</sup> and John M. Hickey<sup>1\*</sup>

## Abstract

**Background:** In this work, we performed simulations to explore the potential of manipulating recombination rates to increase response to selection in livestock breeding programs.

**Methods:** We carried out ten replicates of several scenarios that followed a common overall structure but differed in the average rate of recombination along the genome (expressed as the length of a chromosome in Morgan), the genetic architecture of the trait under selection, and the selection intensity under truncation selection (expressed as the proportion of males selected). Recombination rates were defined by simulating nine different chromosome lengths: 0.10, 0.25, 0.50, 1, 2, 5, 10, 15 and 20 Morgan, respectively. One Morgan was considered to be the typical chromosome length for current livestock species. The genetic architecture was defined by the number of quantitative trait variants (QTV) that affected the trait under selection. Either a large (10,000) or a small (1000 or 500) number of QTV was simulated. Finally, the proportions of males selected under truncation selection as sires for the next generation were equal to 1.2, 2.4, 5, or 10 %.

**Results:** Increasing recombination rate increased the overall response to selection and decreased the loss of genetic variance. The difference in cumulative response between low and high recombination rates increased over generations. At low recombination rates, cumulative response to selection tended to asymptote sooner and the genetic variance was completely eroded. If the trait under selection was affected by few QTV, differences between low and high recombination rates still existed, but the selection limit was reached at all rates of recombination.

**Conclusions:** Higher recombination rates can enhance the efficiency of breeding programs to turn genetic variation into response to selection. However, to increase response to selection significantly, the recombination rate would need to be increased 10- or 20-fold. The biological feasibility and consequences of such large increases in recombination rates are unknown.

## Background

In this study, we performed simulations to explore the potential of manipulating recombination rates to increase response to selection in livestock breeding programs. Response to selection in a breeding program is affected by accuracy of selection, generation interval, intensity of selection, and the amount of genetic variation that is available to be selected upon. In recent years, the

availability of genomic information has increased the breeders' ability to manipulate the first three of these factors. Use of genomic information can increase the accuracy of selection by enabling more informative analyses of the data; it can shorten generation interval by allowing accurate assessment of the Mendelian sampling term of selection candidates early in life; and it can increase selection intensity by reducing the cost of evaluating an individual.

Applications of genomic selection have led to increased responses to selection in several breeding programs (e.g., dairy cattle [1] and layer chickens [2]). However, the

\*Correspondence: john.hickey@roslin.ed.ac.uk

<sup>1</sup> The Roslin Institute and Royal (Dick) School of Veterinary Studies, The University of Edinburgh, Easter Bush, Midlothian, Scotland, UK  
Full list of author information is available at the end of the article

upper limits of its impact on selection response are likely to be reached in the near future since accuracy asymptote, cost constraints and generation interval cannot be reduced further without adopting new reproduction techniques. These constraints suggest that manipulating the amount of genetic variation that is available for selection will become an important goal for breeders in attempts to further increase response to selection.

The amount of genetic variation that is available to be selected upon in a large random mating population depends on the number of quantitative trait variants (QTV) and their frequencies and effect sizes [3]. When populations are not large and mating is not random, the amount of genetic variance also depends on the degree of linkage between QTV, which limits the frequency of particular combinations of alleles in a population. This is especially true in populations that have undergone directional selection, which induces negative disequilibrium between QTV, i.e., the Bulmer effect [4]. For example, in the simulation study of Gorjanc et al. [5], the Bulmer effect was estimated by subtracting the additive genetic variance (variance of breeding values) from the additive genetic variance (variance of breeding values assuming that QTV are completely unlinked). These authors reported additive genetic and genetic variances of 0.28 in an unselected base population and 0.22 and 0.16, respectively, after ten generations of random mating and ten generations of selection. If all QTV segregated independently and/or there would be no selection, the genetic variance would be greater. However, QTV do not segregate independently because meiotic recombinations along a chromosome are rare events. Recombination breaks down physical linkages between loci on a chromosome and, on average, only one such event occurs on a typical chromosome; chromosomes of domesticated livestock species are typically one Morgan long, e.g. the average chromosome length in cattle is 0.97 Morgan [6, 7], 1.1 Morgan in pigs [8], 0.91 Morgan in chicken [9], and 1.3 Morgan in sheep [10]. Consequently, the generation of new combinations of alleles is constrained by their arrangement on the chromosomes in any given generation and, thus, the QTV cannot be selected upon in an independent manner.

The idea that recombination provides variation for selection to act upon was first advocated by Weismann in 1889 [11, 12] who proposed that recombination increases the variance of fitness, which after selection leads to increased fitness of the population [13]. Empirical results from several long-term experiments in natural and model organisms have demonstrated that (1) higher rates of recombination in a population result in greater response to selection [12–18]; (2) increased recombination rates evolve as a correlated response to selection when directional selection is placed on some other trait [18–22];

and (3) asexually propagated species have a higher rate of extinction than sexually reproducing species [13]. In addition, it has been shown that domesticated plant species have higher rates of recombination than their ancestors [23], domesticated mammals have higher chiasma frequencies than wild mammals [24, 25], and domesticated pigs have higher recombination rates than wild pigs [26].

Recombination rates vary largely across various scales, i.e. within and between chromosomes [27], individuals [28], species [29], genders [30, 31], and with maternal age [28], and this variation is under both genetic [25] and environmental [32] control. Heritability estimates of recombination rate were found to equal 0.15 in sheep [33], to range from 0.22 to 0.26 in cattle [6, 7], and to be about 0.30 in humans [28, 34]. QTV that affect recombination rate have been detected [35, 36], including one rare variant in humans which increases the average recombination rate by over 10 % in females [34]. Many molecular mechanisms that underlie recombination and the genes involved (e.g., *PRDM9* and *RNF212*) have been discovered and reviewed in, e.g., [37].

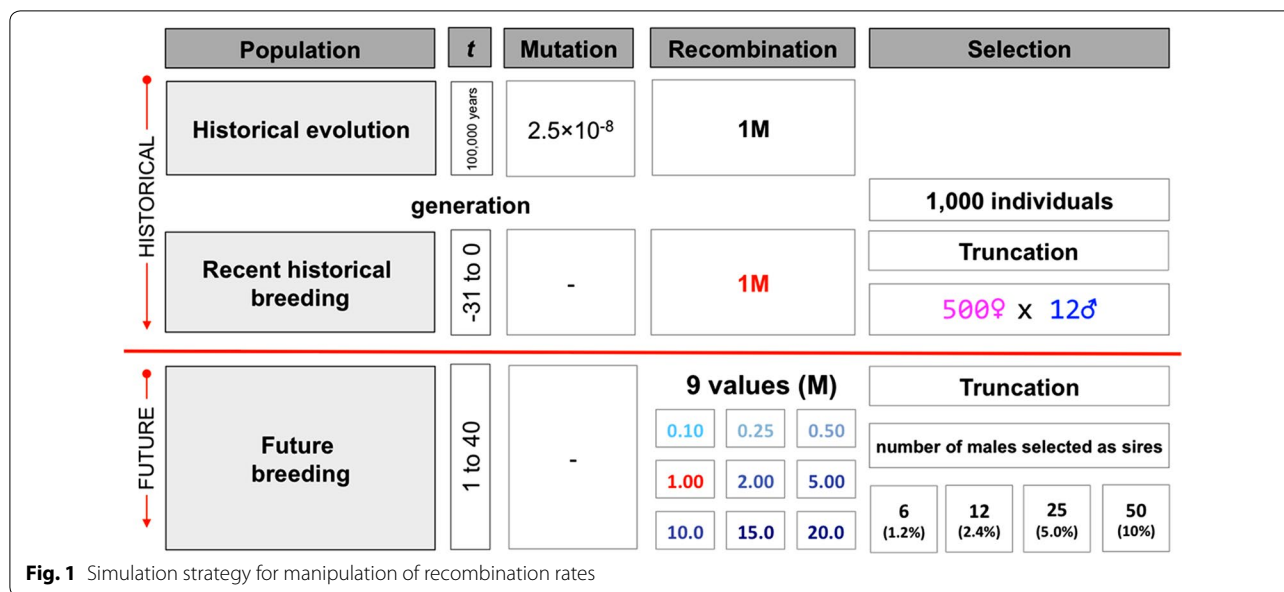
Because recombination is under genetic and environmental control, it should be possible to manipulate it, e.g. by including it in total merit selection indices [38], promoting favorable alleles via genome editing [39, 40], carrying out environmental modifications, or perhaps by manipulating it directly. Such manipulations could be used in livestock breeding programs to release more genetic variation in each generation and thus enhance short- and long-term responses to selection.

The aim of this study was (1) to show that higher recombination rates can enhance the efficiency of breeding programs to turn genetic variation into response to selection in the short, medium, and long term, and (2) to determine the recombination rates that would be needed to achieve large increases in response to selection.

## Methods

Simulations were used to evaluate the impact of manipulating recombination rate on response to selection for quantitative traits in livestock breeding programs. Ten replicates of various scenarios were performed. Scenarios followed a common overall structure (Fig. 1) but differed in the average rate of recombination along the genome (expressed as chromosome length in Morgan), the genetic architecture of the trait under selection, and the selection intensity under truncation selection (expressed as the proportion of males selected).

Conceptually, the simulation scheme was divided into historical and future phases. The historical phase represented historical evolution and recent historical animal breeding efforts up to the present day, under the



assumption that livestock populations have evolved for tens of thousands of years, followed by 32 recent generations of modern animal breeding with selection on estimated breeding values. The future phase represented 40 future generations of modern animal breeding, in which the breeder was able to select on estimated breeding values and manipulate recombination rates. The historical animal breeding generations were denoted -31 to 0 and the future animal breeding generations were denoted 1-40.

Simulations involved the five following steps:

1. Generating whole-genome sequence data,
2. Generating QTV affecting phenotypes,
3. Generating pedigree structures for a typical livestock population,
4. Performing selection, and
5. Testing the effect of manipulated recombination rates on response to selection.

Results are presented as the mean of the ten replicates for each scenario and encompass response to selection, genetic variance ( $\sigma_A^2$ ), and genic variance ( $\sigma_a^2$ ).

**Whole-genome sequence data and historical evolution**

Sequence data were generated using the Markovian Coalescent Simulator (MaCS) [41] and AlphaSim [42] for 400 base haplotypes for each of 10 chromosomes in the genome. Chromosomes (each 100 cM long and comprising  $10^8$  base pairs) were simulated using a per site mutation rate of  $2.5 \times 10^{-8}$ , a per site recombination rate of  $1.0 \times 10^{-8}$ , and an effective population size ( $N_e$ ) that

varied over time in accordance with estimates for the Holstein cattle population [43] as follows:  $N_e$  was set to 100 in the final generation of the coalescent simulation, to  $N_e = 1256$ , 1000 years ago, to  $N_e = 4350$ , 10,000 years ago, and to  $N_e = 43,500$ , 100,000 years ago, with linear changes in between these time-points. The resulting sequences had approximately 540,000 segregating sites.

**Quantitative trait variants**

A quantitative trait was simulated by randomly sampling 10,000 QTV from the segregating sequence sites in the base population, with the restriction that 1000 QTV were sampled from each of the ten chromosomes. For these QTV, the allele substitution effect was randomly sampled from a normal distribution with a mean of 0 and standard deviation of 0.01 (1.0 divided by the square root of the number of QTV). The effects of the QTV were in turn used to compute true breeding values (TBV) for a trait. We also simulated two other genetic architectures of the trait under selection, using smaller numbers of QTV, either 1000 or 500.

**Pedigree structure, gamete inheritance, and recombination rates**

After generating whole-genome sequence data and QTV, a pedigree of 72 generations was simulated. Each generation included 1000 individuals and a portion of these were chosen to be the parents of the next generation by truncation selection. In the first generation of the recent historical animal breeding population (i.e. generation -31), the chromosomes of each individual were sampled from the 400 base haplotypes. In later generations (i.e.,

generations –30 to 40), the chromosomes of each individual were sampled from parental chromosomes with possible recombination events. Different recombination rates were used, depending on the scenario or generation considered. In all scenarios, the 32 generations of the recent historical animal breeding population (i.e. generations –31 to 0) had a recombination rate of 1 Morgan per chromosome, resulting in a 10-Morgan genome.

In the 40 generations of future animal breeding (i.e. generations 1–40), nine different recombination rates were simulated to create nine scenarios: CL0.10M, CL0.25M, CL0.5M, CL1M<sub>T</sub>, CL2M, CL5M, CL10M, CL15M, and CL20M, where CL refers to the chromosome length, M to the units (Morgan) and T denotes the typical chromosome length in current livestock populations of 1 Morgan. With 10 chromosomes, these scenarios resulted in genome lengths of 1, 2.5, 5, 10, 20, 50, 100, 150, and 200 Morgan. Crossovers were simulated to occur without interference.

#### Population history and selection strategies

In the recent historical animal breeding generations (i.e., generations –31 to 0), all 500 females and 2.4 % of the males (i.e. 12 individuals) were selected using truncation selection on their TBV to become the parents of the next generation. In the future animal breeding generations (i.e. generations 1–40), all females were selected and 1.2, 2.4, 5, or 10 % of the males were selected based on their TBV. Different selection intensities were used to change the loss of genetic variance due to selection.

#### Response to selection and variances

Response to selection was calculated in units of the standard deviation of TBV in the base generation ( $\sigma_{TBV_{base}}$ ) as  $(\overline{TBV_{curr}} - \overline{TBV_{base}}) / \sigma_{TBV_{base}}$ , where  $\overline{TBV_{curr}}$  and  $\overline{TBV_{base}}$  are the mean TBV in the current and base generation, respectively. Generation 0 was used as the base generation in order to observe the genetic improvement since the start of the future generations of animal breeding.

The genetic variance in each generation was calculated as:  $\sigma_A^2 = \mathbf{a}'\mathbf{a} / (n - 1)$ , where  $\mathbf{a}$  is a zero mean vector of TBV of the  $n$  individuals in that generation. The genic variance in each generation was calculated as:  $\sigma_\alpha^2 = 2 \sum_{i=1}^{n_{QTV}} p_i q_i \alpha_i^2$  [3], where  $n_{QTV}$  is the number of QTV,  $p_i$  and  $q_i$  are the allele frequencies at the  $i$ -th QTV in a given generation and  $\alpha_i$  is the allele substitution effect at the  $i$ -th QTV. The genetic and genic variances in each generation were expressed relative to the genetic variance in the base generation (thus  $\sigma_A^2 = 1$  and  $\sigma_\alpha^2 \geq 1$  at generation 0).

#### Design of the specific scenarios

Two different scenarios were constructed to examine specific components of the research objectives.

**Scenario A1** The objective of scenario A1 was to evaluate the impact of a range of recombination rates on response to selection and on reductions in genetic and genic variances with truncation selection across a range of selection intensities and number of QTV controlling the trait under selection. This resulted in a grid of  $36 \times 3$  sub-scenarios (9 recombination rates  $\times$  4 selection intensities  $\times$  3 traits influenced by different numbers of QTV). The trait influenced by the largest number of QTV was used as a baseline that was compared to traits with other numbers of QTV in some analyses.

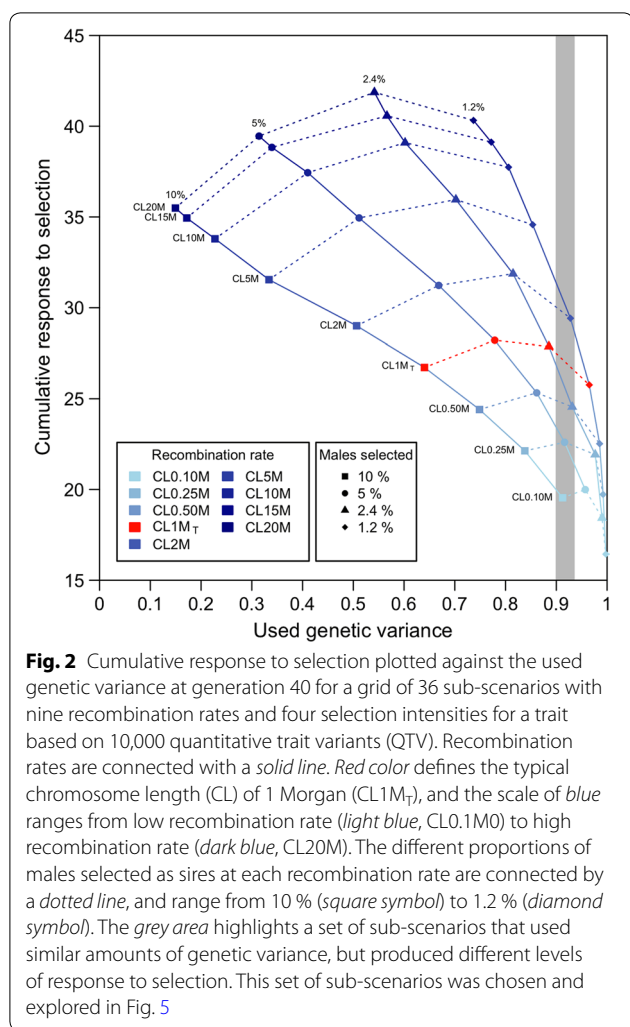
**Scenario A2** The objective of scenario A2 was to quantify the additional response to selection that higher recombination rates could provide for the same loss in genetic variance. In scenario A2, the grid of 36 selection intensities and recombination rates from scenario A1 was searched to find sub-scenarios that used genetic variance at similar rates in generation 40, and their response to selection was quantified. These sub-scenarios were identified by visual inspection of Fig. 2 and four of these that are highlighted by the shaded area in Fig. 2, are described in the Results section.

## Results

#### Scenario A1: impact of recombination rates

Increasing the recombination rate increased response to selection and decreased the loss of genetic and genic variances. The differences in response to selection and genetic and genic variances between low and high recombination rates increased over generations. At a low recombination rate, cumulative response to selection tended to asymptote sooner and the genetic variance was completely eroded. If the trait under selection was affected by a few QTV, differences in response to selection between low and high recombination rates still existed, but the selection limit was reached for all rates of recombination.

Figure 2 summarizes cumulative responses to selection plotted against the amount of genetic variance that was used up to the last generation of selection (generation 40) for the 36 sub-scenarios of scenario A1, with recombination rate and proportion of males selected as parameters. The nine recombination rates for each selection intensity are connected with a solid line. The four selection intensities (expressed as the proportion of males selected) at each recombination rate are connected with a dotted line. Cumulative response to selection ranged from 16.4 to 41.9; the proportion of genetic variance used ranged



from 0.149 (i.e. most genetic variance was preserved) to 0.998 (i.e. most genetic variance was used).

Figure 2 shows that for each selection intensity, increasing recombination rate always increased response to selection and decreased the variance used. The effect of increasing recombination rate on response to selection was greater when smaller proportions of males were selected (higher selection intensities), which caused the dotted contours in Fig. 2 that connect different selection intensities at the same recombination rate to rotate anti-clockwise as recombination rate increased.

Figure 2 also shows that the effect of selecting a smaller proportion of males for breeding, which is currently easier than increasing recombination rate in a typical breeding program, always increased the genetic variance used but its effect on response to selection depended on both the selection intensity and the recombination rate. These effects can be summarized by two features of Fig. 2. First, all selection contours had peaks: at the

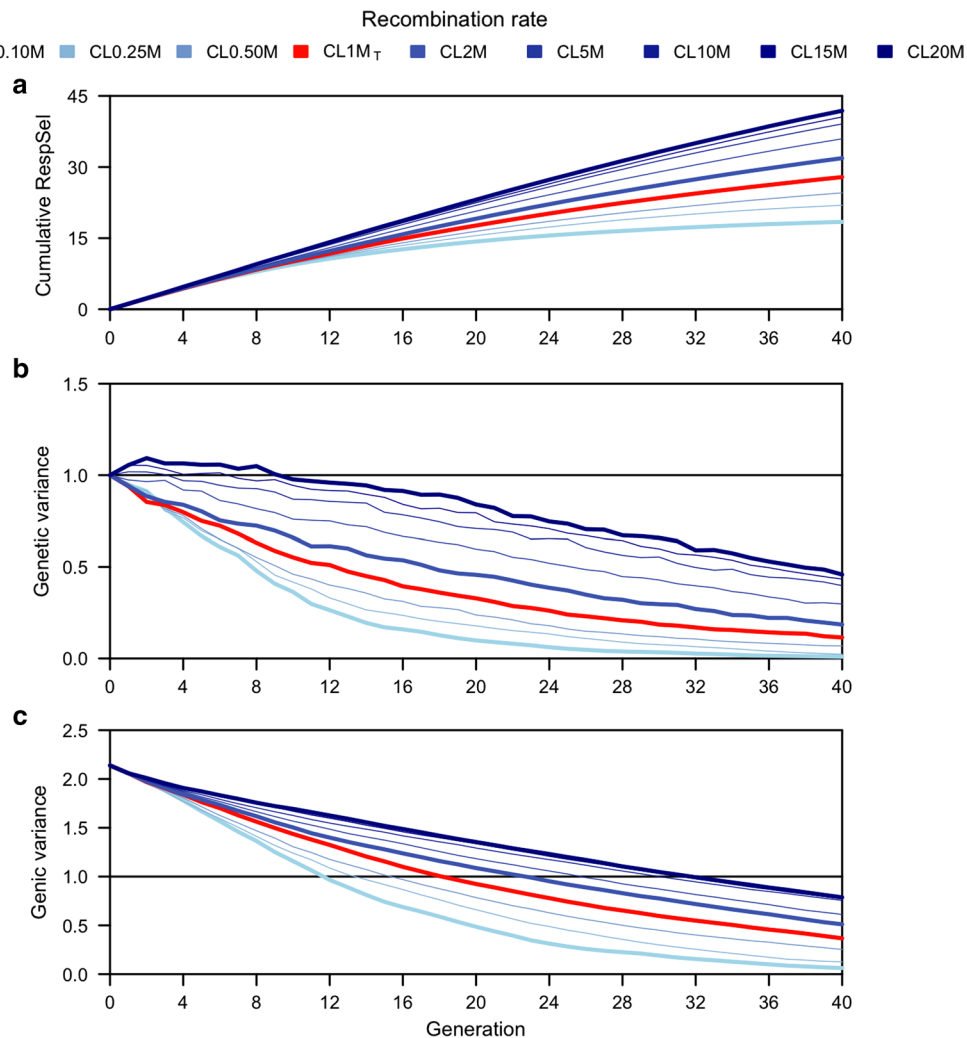
lowest selection intensity, increasing selection intensity always increased cumulative response, whereas increasing to the highest selection intensity always reduced the cumulative response to selection. Thus, there was an optimal selection intensity, i.e. selecting between 2.4 and 5 % of males as sires for the population size simulated here. Second, as noted previously, increasing recombination rate increased cumulative response more at higher selection intensities than at lower selection intensities, which caused the optimal selection intensity to be greater at higher recombination rates, i.e. the optimum shifted from 5 % selected at the lowest recombination rate to 2.4 % at the highest recombination rate.

Figure 2 shows cumulative responses and genetic variance used by generation 40 for scenario A1. Figure 3 shows how recombination rate affected cumulative response (Fig. 3a), genetic variance (Fig. 3b) and genic variance (Fig. 3c) during 40 generations of selection, with a fixed selection intensity, for nine recombination rates. Increasing recombination rate increased the positive gradient of cumulative response curves, which shows that recombination enhanced response to selection. Increasing recombination rate reduced the negative gradients of the genetic and genic variance curves, which indicates that less variance was used with high recombination rates.

Very large increases in recombination rate had a large impact on cumulative response to selection, as shown in Fig. 3a. For instance, doubling the chromosome length from the typical 1 Morgan (CL1M<sub>T</sub>) to 2 Morgan (CL2M) increased cumulative response over 40 generations by 12.5 %, while increasing recombination rate 10- and 20-fold increased the cumulative response by 28.7 (CL10M) and 33.4 % (CL20M). At the lowest recombination rate (CL0.10M), cumulative response approached a limit of selection in the long-term; these results are further explored in Fig. 4 (see below).

Genetic variance decreased for all rates of recombination, but more slowly and more variance was preserved at high rates of recombination. At the highest recombination rate (CL20M), genetic variance was still 0.46 in generation 40, whereas at the lowest recombination rate (CL0.10M) it decreased to 0.01 (Fig. 3b). In most cases, the genetic variance decreased monotonically but at the highest recombination rate, it increased in the first few generations: by 9 % in generation 2 for a chromosome length of 20 Morgan but it declined by 9 % in the same generation for a chromosome length of 0.10 Morgan (Fig. 3b).

Genic variance showed roughly the same decreasing trends over time as genetic variance, except that the decrease was steeper initially and it was monotonic for all recombination rates. At generation 0, the genic variance



**Fig. 3** Cumulative response to selection (a), genetic (b) and genic (c) variance for the future breeding populations (from generation 1 to 40). Cumulative response to selection (a), genetic variance (b) and genic variance (c) for a trait based on 10,000 quantitative trait variants (QTV) are plotted for each generation. From generation -31 to 0 (not plotted), the chromosome length (CL) was equal to 1 Morgan, whereas from generation 1 to 40, the chromosome length ranged from 0.10 Morgan (CL0.10M) to 20 Morgan (CL20M). 2.4 % of the males were selected in each generation by truncation selection. See Additional file 1: Figure S1 for results of all 72 generations

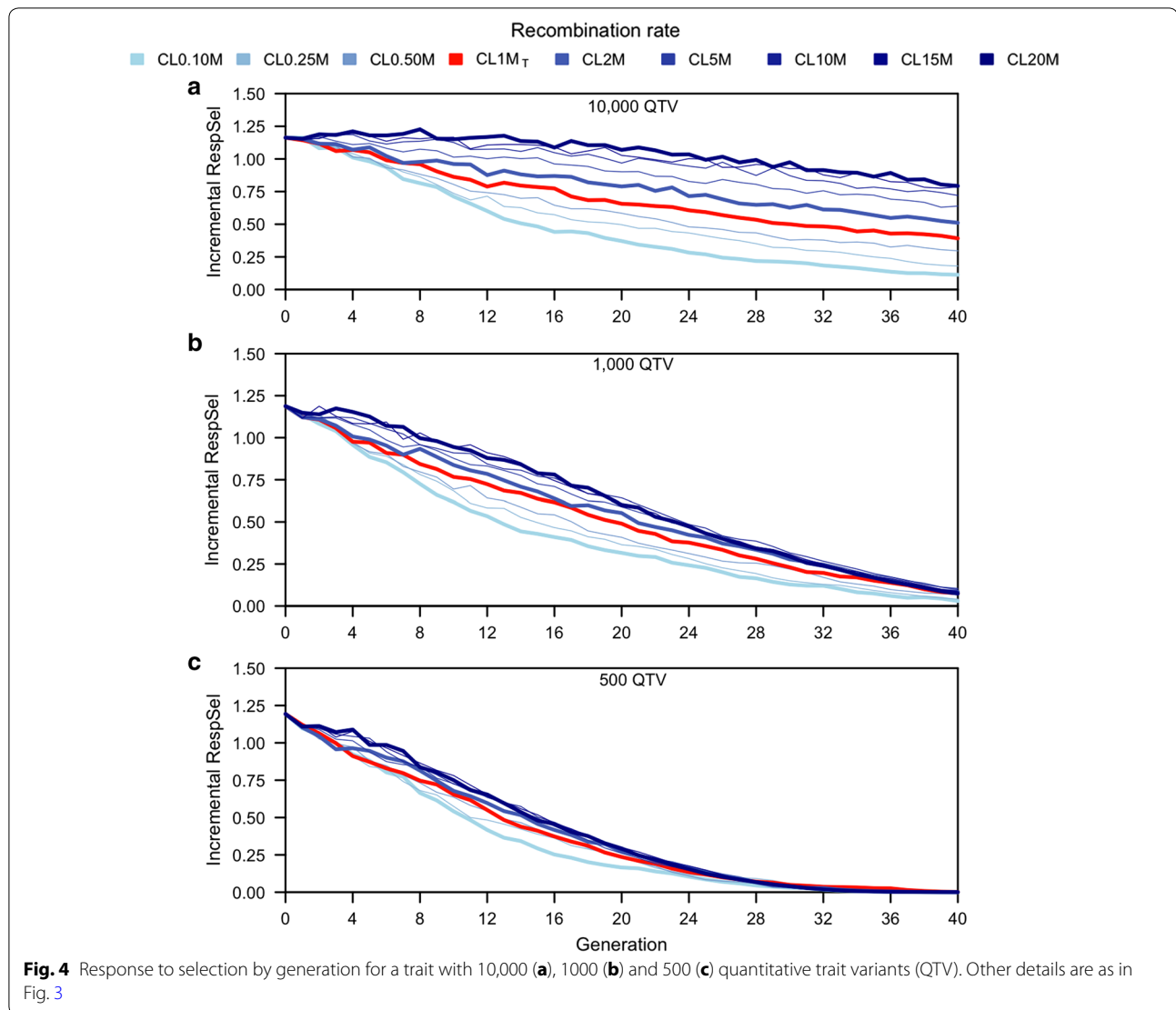
was equal to 2.14, i.e. more than twice as high as the genetic variance (Fig. 3) and at generation 40, it was equal to 0.79 at the highest recombination rate and substantially lower (0.06) at the lowest recombination rate (Fig. 3c).

Figure 3a shows that after many generations of selection, cumulative response to selection tended to increase more slowly, especially at low recombination rates. Next, we explored how this slow-down depended on the genetic architecture of the trait.

Figure 4 shows that the slow-down in response to selection was more rapid when fewer QTV affected the trait. This figure plots the increase in response to selection between subsequent generations for three different trait architectures, 40 generations of selection, with a fixed

selection intensity, and for nine different recombination rates using recombination rate as a parameter. Figure 4a has results for the same number of QTV (10,000) as in Fig. 3a but Fig. 4a shows incremental responses rather than cumulative responses. Figure 4b, c show results for two more extreme trait architectures: 1000 QTV for Fig. 4b and 500 QTV for Fig. 4c. When fewer QTV affect the trait, the incremental responses declined more rapidly. High recombination rates delayed these declines in response, but if the trait was affected by few QTV, responses declined to 0 for all recombination rates by generation 40 (Fig. 4c).

If the trait was affected by many QTV, incremental responses remained high throughout the 40 generations



at high recombination rates, while responses decreased rapidly at low recombination rates. At the highest recombination rate (CL20M), responses declined by less than 10 % over the first 20 generations (from 1.15 to 1.07 units) and still was almost 70 % of its initial value (0.79 units) by generation 40. At a low recombination rate (CL0.10M), responses declined more rapidly, reaching 0.37 units at generation 20 (32 % of the initial value) and 0.11 units (10 %) at generation 40 (Fig. 4a).

If the trait was affected by only 1000 QTV (Fig. 4b), differences in response between high and low recombination rates were qualitatively similar but the decline in response over generations was more rapid and ultimately eroded the difference between high and low recombination rates. For instance, Fig. 4b (1000 QTV) shows that

at the highest recombination rate (CL20M), incremental response decreased to 52 % of its initial value (0.60 units) by generation 20 and to 6 % (0.07 units) by generation 40. At the lowest recombination rate (CL0.10M), incremental response was equal to 0.32 units (28 %) in generation 20 and 0.03 (3 %) in generation 40.

Figure 4c shows that the decline in response to selection was even more rapid and the differences between the highest (CL20M) and lowest (CL0.10M) recombination rates were even smaller when the trait that was affected by only 500 QTV. At generation 20, incremental response decreased to 0.29 units (26 % of the initial value) and to 0.17 units (15 %) for the highest and lowest recombination rates, respectively. At generation 40, incremental responses were equal to 0 for all recombination rates.



### Scenario A2: efficiency of turning genetic variation into response

Figure 5 shows that recombination increased the efficiency with which selection turned genetic variation into response by comparing sub-scenarios that produced different responses to selection but used a similar amount of genetic variance; cumulative response is plotted against genetic variance for four such scenarios for 40 generations of selection. These sub-scenarios are marked by the shaded area in Fig. 2. Cumulative responses up to generation 40 for these sub-scenarios ranged from 19.5 to 29.4 and the genetic variance used was almost identical, ranging from 0.91 to 0.93. These sub-scenarios had different recombination rates (chromosome lengths ranged from 0.1 to 2.0 Morgan) and different proportions of males selected as sires (1.2 to 10 %). Scenarios with higher recombination rates and fewer males selected are plotted in darker colors. The scenario with the highest recombination rate (CL2M) was the most efficient at turning genetic variation into response in the short, medium, and long term. For the same genetic variance used, cumulative responses were 1.45, 1.50 and 1.51 greater after 10, 20 and 40 generations than for the scenario with the lowest recombination rate.

### Discussion

The results showed that higher recombination rates can enhance the efficiency of breeding programs at turning genetic variation into response to selection in the short, medium, and long term. Greater response is achieved in the short term because higher recombination rates allow QTV to segregate with a greater degree of independence, which results in more of the genetic variation being accessible to selection in each generation. Greater response is achieved in the long term because fewer

favorable alleles are lost from the population as a result of drift. A high recombination rate reduces the effect of drift because the variation among gametes is greater. Greater variation among gametes decreases occurrence of the same permutations of favorable and unfavorable alleles repeatedly among the selected individuals. A high recombination rate will shuffle alleles to a greater degree than a low recombination rate, thus reducing repeated occurrence of the same permutations. Greater variation among gametes also increases the probability that a more representative sample of all alleles is passed on to the next generation. Our study did not allow us to disentangle the effects of these two processes.

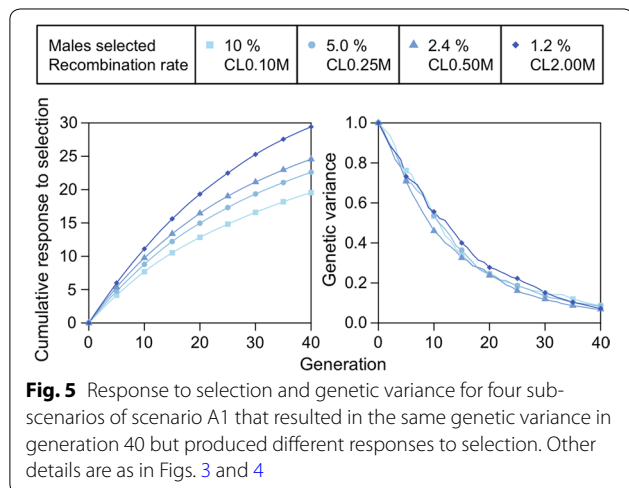
Although increased recombination rates were universally associated with greater responses to selection, very large increases in recombination rate were required to generate very large increases in response; doubling the recombination rate resulted in a 12.5 % increase in cumulative response over 40 generations, whereas increasing it 20-fold still only resulted in a 33.4 % increase in response. In addition, differences in responses between recombination rates were marginal in earlier generations and only became more pronounced at later generations, possibly due to reduced loss of genetic variance from the population before it could be selected upon when recombination rates were higher.

Differences in response to selection due to recombination rate raise three main points for discussion i.e. (1) the feasibility of large increases in recombination, (2) accounting for recombination rate in breeding programs, and (3) implications of greater recombination rates for genomic selection.

### Feasibility of large increases in recombination rates

Our simulation results suggest that large increases in recombination rates would be beneficial for increasing selection responses. However, very high recombination rates in domestic populations likely have several important biological downsides and mechanistic limitations. Although recombination rates can be very high in fungi and unicellular organisms (>20 Morgan per chromosome [44]), such high recombination rates are rarely observed in multi-cellular eukaryotes, with the exception of social hymenoptera, such as honeybees (e.g. ~5 Morgan per chromosome [44, 45]). Indeed, recombination rates in mammals appear to be constrained to ~1 crossover per chromosome or chromosome arm [25, 46], with the most extreme values observed in domestic sheep (1.3 crossovers per arm [10]).

The rarity of high recombination rates in mammals may be due to mechanistic trade-offs between the benefits and costs of meiotic recombination. The main benefits are reduced aneuploidy and, possibly, increased



fertility in females [28]. The main costs are increased risk of mutation and chromosomal rearrangements, which are associated with disease [25, 47]. From selective breeding and evolutionary perspectives, although recombination may be beneficial for uncoupling deleterious and favorable alleles [48–51], it may also break up favorable combinations of alleles that have been built up by selection [52]. Even so, there is little information on the relative costs and benefits associated with variation in and the magnitude of recombination rates, due to a lack of empirical data that examine associations of recombination rates with offspring viability and other fitness traits.

Our work assumed that recombination occurred without interference. Interference in genetic recombination reduces the occurrence of recombination in nearby chromosomal intervals and the effect of interference decreases as the distance between the chromosomal intervals increases [25, 29]. The assumption of no interference is likely to have caused our simulations to display a greater benefit from increasing recombination compared to what may be observed in practice. We believe that this difference is probably small and affected by unknown, but potentially more important factors, such as the degree to which QTV are clustered in chromosomal regions.

#### Accounting for recombination rate in breeding programs

The rate at which genetic variation is used in a livestock breeding population has been an active area of research for several years and several methods have been developed to control it by reducing the co-ancestry between selected individuals [53–55] or by increasing the selection emphasis that is placed on rare alleles [56–58]. Manipulation of recombination rate represents another route through which genetic variation could be maintained and efficiently turned into response to selection. A greater recombination rate facilitates the maintenance of genetic variation in populations under directional selection through increased variation among selection candidates. Maintaining genetic variation in such a population is achieved by breaking negative gametic phase disequilibrium (the “Bulmer-effect”) between the QTV. This greater variance can be used both for short-term goals (there is more variation to select from due to greater variation among gametes and therefore among selection candidates) and for long-term goals (more variation is retained due to inbreeding being localized to regions around QTV). This unlocking of genetic variation was evident in this simulation study. For example, after 30 generations of the conventional breeding program, the additive genetic variance (variance of breeding values) was practically 50 % of the additive genetic variance (variance of breeding values when the QTV are completely

unlinked), which would have been available to breeders if recombination rate had been unlimited.

Achieving large increases in recombination rate (e.g., more than 2 times higher than currently observed) is likely challenging using conventional approaches. Recent genomic studies have indicated that recombination rate is heritable in domestic mammals (e.g., heritability estimates were 0.15 and 0.22 for genome-wide recombination rates in sheep and cattle, respectively [6, 33]) and therefore has the potential to respond to selection. Previously, we undertook a simulation study [38] in which recombination rate was included as a trait in a multiple trait breeding goal. The results of that study indicated that conventional selection based on genomic breeding values would not lead to sufficient increases in recombination rates to generate increases in response to selection for the other traits in the breeding goal, perhaps because that study assumed that recombination was a quantitative trait controlled by 10,000 QTV.

Recent studies showed that most genetic variance in mammalian recombination rates has a simple genetic architecture, which may allow for targeted genome editing of alleles for increased recombination [39, 40]. Studies in sheep and cattle have shown that the genes *PRDM9*, *RNF212*, and *REC8* are involved in global recombination rate variation [6, 33, 59], with relatively large effects. Nevertheless, fixation of high recombination rate variants at *RNF212* and *REC8* in cattle would only translate into recombination rate increases of 14 and 12 %, respectively [6]. Also, *RNF212* is associated with female recombination rate only in sheep and fixing its favorable allele would translate to an increase of 16 % in this sex alone [33]. An important consideration is that in human studies, variants at *RNF212* are associated with sexually antagonistic variation in human recombination rate [34]. If this is also the case for livestock species, then targeted selection or genome-editing at this locus may only partially translate into genetic gain. However, given that selection intensity is generally higher in males than females, it might be more beneficial to increase recombination rates in males than in females. The results of our study showed that increasing recombination rate was more beneficial when selection intensity was high. Such a strategy would have to take differences in recombination rate between sexes in a given species into account [8].

#### Implications of greater recombination rates for genomic selection

Higher rates of recombination will represent a challenge for genomic selection as it is currently implemented because it uses correlations between SNPs and causal variants via linkage and linkage disequilibrium [60] to drive accurate predictions of breeding values. These

correlations are reduced by increasing recombination rate, thus leading to lower accuracy of genomic selection, which in turn would reduce the benefit of increasing recombination rate. Therefore, large datasets (i.e. many hundreds of thousands or millions of individuals) with sequence and phenotype data may be needed to maximally benefit from increased recombination rates in breeding programs using genomic selection. Such datasets will ensure that the accuracy of genomic breeding values will depend less on the correlations between SNPs and causal variants because more of the causal variants will be finely mapped. One benefit from greater recombination rate for statistical estimation of allele effects will be lower correlations between the causal variants themselves and between causal variants and nearby neutral variants.

#### Implications for quantitative genetic theory

One of the reviewers of our paper pointed out that the observed values of genetic variance and genic variance in the simulations are surprising. Specifically, according to quantitative genetics and selection theory, genetic variance is expected to be smaller than the genic variance [4, 61], which is observed with our results (Fig. 3; Additional file 1: Figure S1). The lower genetic variance is caused by the build up of negative covariances between causal loci brought about by directional selection, i.e., the Bulmer effect [4]. Furthermore, based on the infinitesimal genetic model and ignoring linkage, the genetic variance is expected to be at least half of the genic variance [62], which was not observed in our results (Fig. 3; Additional file 1: Figure S1). For example, after 12, 22, and 32 generations of “historical” breeding, the genetic variance was respectively equal to 65, 52, and 47 % of the genic variance (Fig. 3; Additional file 1: Figure S1). By the end of the simulation (after a total of 72 generations of selection), genetic variance was only 31 % of the genic variance in the baseline scenario (1 Morgan chromosomes). These results suggest that the genetic variance decreased much faster than is expected based on the observed declines in genic variance and the extensively used infinitesimal genetic model without accounting for linkage. However, Bulmer has already shown that linkage increases the amount of negative covariance among loci [62]. Since our work is based on simulated chromosomes with linked loci, it is expected that genetic variance decreases at a faster rate than genic variance. We reran one replicate of the simulation with chromosomes of 1000 Morgan in length and observed a considerably smaller rate of decrease in genetic variance, which is in line with the theory. These observations might have important implications for the often-used breeder’s tools, such as pedigree relationship matrix [63] and selection

index (e.g., [64]). These tools largely ignore the effect of linkage and further research is needed to exactly quantify the impact of linkage on them.

#### Conclusions

Increasing recombination rates is expected to enhance the efficiency of breeding programs in turning genetic variation into response to selection by using genetic variation more efficiently and reducing the loss of favorable alleles due to selection and drift. However, to obtain large increases in response to selection, recombination rates would need to be increased 10- to 20-fold, and the biological feasibility and consequences of such large increases in recombination rate remain unknown. Traditional selection methods are unlikely to be sufficient for increasing recombination rate to a large degree. Thus, it may be necessary to consider genome-editing approaches to achieve substantial increases in recombination rates.

#### Additional file

**Additional file 1.** Results for the recent historical (from generation -31 to 0) and for the future breeding population (from generation 1 to 40). Mean TBV (a), unscaled genetic variance (b) and unscaled genic variance (c) for a trait based on 10,000 QTV are plotted for each generation. From generation -31 to 0, the chromosome length (CL) was equal to 1 Morgan, whereas from generation 1 to 40 the chromosome length ranged from 0.10 Morgan (CL0.10M) to 20 Morgan (CL20M). 2.4 % of the males were selected in each generation by truncation selection.

#### Authors’ contributions

JMH conceived the study. JMH, GG, and MB designed the study. JMH, GG, and AMF wrote the software. MB performed the analysis and wrote the first draft of the manuscript. JMH, GG, and SEJ helped to interpret the results and refine the manuscript. All authors read and approved the final manuscript.

#### Author details

<sup>1</sup>The Roslin Institute and Royal (Dick) School of Veterinary Studies, The University of Edinburgh, Easter Bush, Midlothian, Scotland, UK. <sup>2</sup>Institute of Evolutionary Biology, University of Edinburgh, Charlotte Auerbach Road, Edinburgh EH9 3FL, UK.

#### Acknowledgements

The authors acknowledge the financial support from the BBSRC ISPG to The Roslin Institute, from Genus PLC, from Aviagen LTD, and from the BBSRC Grant “BB/M009254/1”. The authors thank the reviewers for the useful comments.

#### Competing interests

The authors declare that they have no competing interests.

Received: 27 November 2015 Accepted: 7 June 2016

Published online: 22 June 2016

#### References

1. Pryce JE, Daetwyler HD. Designing dairy cattle breeding schemes under genomic selection: a review of international research. *Anim Prod Sci.* 2012;52:107–14.
2. Wolc A, Zhao HH, Arango J, Settar P, Fulton JE, O’Sullivan NP, et al. Response and inbreeding from a genomic selection experiment in layer chickens. *Genet Sel Evol.* 2015;47:59.

3. Falconer DS, Mackay TFC. Introduction to quantitative genetics. 4th ed. Harlow: Longman Group Ltd; 1996.
4. Bulmer MG. The effect of selection on genetic variability. *Am Nat*. 1971;105:201–11.
5. Gorjanc G, Bijma P, Hickey JM. Reliability of pedigree-based and genomic evaluations in selected populations. *Genet Sel Evol*. 2015;47:65.
6. Sandor C, Li W, Coppieters W, Druet T, Charlier C, Georges M. Genetic variants in *REC8*, *RNF212*, and *PRDM9* influence male recombination in cattle. *PLoS Genet*. 2012;8:e1002854.
7. Weng ZQ, Saatchi M, Schnabel RD, Taylor JF, Garrick DJ. Recombination locations and rates in beef cattle assessed from parent-offspring pairs. *Genet Sel Evol*. 2014;46:34.
8. Tortoreau F, Servin B, Frantz L, Megens H-J, Milan D, Rohrer G, et al. A high density recombination map of the pig reveals a correlation between sex-specific recombination and GC content. *BMC Genomics*. 2012;13:586.
9. Groenen MAM, Wahlberg P, Foglio M, Cheng HH, Megens H-J, Crooijmans RPMA, et al. A high-density SNP-based linkage map of the chicken genome reveals sequence features correlated with recombination rate. *Genome Res*. 2009;19:510–9.
10. Maddox JF, Davies KP, Crawford AM, Hulme DJ, Vaiman D, Cribiu EP, et al. An enhanced linkage map of the sheep genome comprising more than 1000 loci. *Genome Res*. 2001;11:1275–89.
11. Weismann A. The significance of sexual reproduction in the theory of natural selection. In: Poulton EB, Schönland S, Shipley AE, editors. *Essays upon heredity*, 1886. 2nd ed. Oxford: Clarendon Press; 1889. p. 257–342.
12. Weismann A. *The evolution theory*. London: Edward Arnold; 1904.
13. Burt A. Perspective: sex, recombination, and the efficacy of selection—was Weismann right? *Evolution*. 2000;54:337–51.
14. Rice WR. Degeneration of a nonrecombining chromosome. *Science*. 1994;263:230–2.
15. Zeyl C, Bell G. The advantage of sex in evolving yeast populations. *Nature*. 1997;388:465–8.
16. Stemmer WP. Rapid evolution of a protein in vitro by DNA shuffling. *Nature*. 1994;370:389–91.
17. Goddard MR, Godfray HCJ, Burt A. Sex increases the efficacy of natural selection in experimental yeast populations. *Nature*. 2005;434:636–40.
18. Korol AB, Iliadi KG. Increased recombination frequencies resulting from directional selection for geotaxis in *Drosophila*. *Heredity (Edinb)*. 1994;72:64–8.
19. Flexon PB, Rodell CF. Genetic recombination and directional selection for DDT resistance in *Drosophila melanogaster*. *Nature*. 1982;298:672–4.
20. Zhuchenko AA, Korol AB, Kovtyukh LP. Change of the crossing-over frequency in *Drosophila* during selection for resistance to temperature fluctuations. *Genetica*. 1985;67:73–8.
21. Gorodetskii VP, Zhuchenko AA, Korol AB. Efficiency of feedback selection for recombination in *Drosophila*. *Genetika*. 1990;26:1942–52.
22. Otto SP, Barton NH. Selection for recombination in small populations. *Evolution*. 2001;55:1921–31.
23. Ross-Ibarra J. The evolution of recombination under domestication: a test of two hypotheses. *Am Nat*. 2004;163:105–12.
24. Burt A, Bell G. Mammalian chiasma frequencies as a test of two theories of recombination. *Nature*. 1987;326:803–5.
25. Coop G, Przeworski M. An evolutionary view of human recombination. *Nat Rev Genet*. 2007;8:23–34.
26. Ollivier L. Genetic differences in recombination frequency in the pig (*Sus scrofa*). *Genome*. 1995;38:1048–51.
27. Myers S, Bottolo L, Freeman C, McVean G, Donnelly P. A fine-scale map of recombination rates and hotspots across the human genome. *Science*. 2005;310:321–4.
28. Kong A, Barnard J, Gudbjartsson DF, Thorleifsson G, Jonsdottir G, Sigurdardottir S, et al. Recombination rate and reproductive success in humans. *Nat Genet*. 2004;36:1203–6.
29. Lynn A, Ashley T, Hassold T. Variation in human meiotic recombination. *Annu Rev Genomics Hum Genet*. 2004;5:317–49.
30. Broman KW, Murray JC, Sheffield VC, White RL, Weber JL. Comprehensive human genetic maps: individual and sex-specific variation in recombination. *Am J Hum Genet*. 1998;63:861–9.
31. Kong A, Gudbjartsson DF, Sainz J, Jonsdottir GM, Gudjonsson SA, Richardsson B, et al. A high-resolution recombination map of the human genome. *Nat Genet*. 2002;31:241–7.
32. Koren A, Ben-Aroya S, Kupiec M. Control of meiotic recombination initiation: a role for the environment? *Curr Genet*. 2002;42:129–39.
33. Johnston SE, Slate J, Pemberton JM. A genomic region containing *RNF212* is associated with sexually-dimorphic recombination rate variation in wild Soay sheep (*Ovis aries*). *bioRxiv*. 2015. doi:10.1101/024869.
34. Kong A, Thorleifsson G, Frigge ML, Masson G, Gudbjartsson DF, Villemoes R, et al. Common and low-frequency variants associated with genome-wide recombination rate. *Nat Genet*. 2014;46:11–6.
35. Jeffreys AJ, Neumann R. Reciprocal crossover asymmetry and meiotic drive in a human recombination hot spot. *Nat Genet*. 2002;31:267–71.
36. Jeffreys AJ. Factors influencing recombination frequency and distribution in a human meiotic crossover hotspot. *Hum Mol Genet*. 2005;14:2277–87.
37. Baudat F, Imai Y, de Massy B. Meiotic recombination in mammals: localization and regulation. *Nat Rev Genet*. 2013;14:794–806.
38. Mészáros G, Gorjanc G, Jenko J, Cleveland MA, Woolliams JA, Hickey JM. Selection on recombination rate to increase genetic gain. In: Proceedings of the 10th world congress of genetics applied to livestock production: 17–22 August 2014, Vancouver; 2014. <https://asas.confex.com/asas/WCGALP14/webprogram/Paper9565.html>.
39. Jenko J, Gorjanc G, Cleveland MA, Varshney RK, Whitelaw CB, Woolliams JA, et al. Potential of promotion of alleles by genome editing to improve quantitative traits in livestock breeding programs. *Genet Sel Evol*. 2015;47:55.
40. Davis KM, Pattanayak V, Thompson DB, Zuris JA, Liu DR. Small molecule—triggered Cas9 protein with improved genome-editing specificity. *Nat Chem Biol*. 2015;11:316–8.
41. Chen GK, Marjoram P, Wall JD. Fast and flexible simulation of DNA sequence data. *Genome Res*. 2009;19:136–42.
42. Hickey JM, Gorjanc G. Simulated data for genomic selection and genome-wide association studies using a combination of coalescent and genome drop methods. *G3 (Bethesda)*. 2012;2:425–7.
43. Villa-Angulo R, Matukumalli LK, Gill CA, Choi J, Tassell CPV, Grefenstette JJ. High-resolution haplotype block structure in the cattle genome. *BMC Genet*. 2009;10:19.
44. Wilfert L, Gadau J, Schmid-Hempel P. Variation in genomic recombination rates among animal taxa and the case of social insects. *Heredity*. 2007;98:189–97.
45. Solignac M, Mouguel F, Vautrin D, Monnerot M, Cornuet J-M. A third-generation microsatellite-based linkage map of the honey bee, *Apis mellifera*, and its comparison with the sequence-based physical map. *Genome Biol*. 2007;8:R66.
46. Pardo-Manuel de Villena F, Sapienza C. Nonrandom segregation during meiosis: the unfairness of females. *Mamm Genome*. 2001;12:331–9.
47. Inoue K, Lupski JR. Molecular mechanisms for genomic disorders. *Annu Rev Genomics Hum Genet*. 2002;3:199–242.
48. Hill WG, Robertson A. The effect of linkage on limits to artificial selection. *Genet Res*. 1966;8:269–94.
49. Felsenstein J. The evolutionary advantage of recombination. *Genetics*. 1974;78:737–56.
50. Crow JF, Kimura M. Evolution in sexual and asexual populations. *Am Nat*. 1965;99:439–50.
51. Muller HJ. The relation of recombination to mutational advance. *Mutat Res*. 1964;106:2–9.
52. Charlesworth B, Barton NH. Recombination load associated with selection for increased recombination. *Genet Res*. 1996;67:27–41.
53. Wray NR, Goddard ME. Increasing long-term response to selection. *Genet Sel Evol*. 1994;26:431.
54. Woolliams JA, Bijma P, Villanueva B. Expected genetic contributions and their impact on gene flow and genetic gain. *Genetics*. 1999;153:1009–20.
55. Clark SA, Kinghorn BP, Hickey JM, van der Werf JH. The effect of genomic information on optimal contribution selection in livestock breeding programs. *Genet Sel Evol*. 2013;45:44.
56. Jannink JL. Dynamics of long-term genomic selection. *Genet Sel Evol*. 2010;42:35.
57. Liu AYH, Woolliams JA. Continuous approximations for optimizing allele trajectories. *Genet Res (Camb)*. 2010;92:157–66.
58. Liu H, Meuwissen TH, Sørensen AC, Berg P. Upweighting rare favourable alleles increases long-term genetic gain in genomic selection programs. *Genet Sel Evol*. 2015;47:19.

59. Ma L, O'Connell JR, VanRaden PM, Shen B, Padhi A, Sun C, et al. Cattle sex-specific recombination and genetic control from a large pedigree analysis. *PLoS Genet*. 2015;11:e1005387.
60. Habier D, Fernando RL, Garrick DJ. Genomic BLUP decoded: a look into the black box of genomic prediction. *Genetics*. 2013;194:597–607.
61. Lynch M, Walsh B. *Genetics and analysis of quantitative traits*. Sunderland: Sinauer Associates Inc.; 1998.
62. Bulmer MG. *The mathematical theory of quantitative genetics*. Oxford: Oxford Science Publications; 1985.
63. Henderson CR. A simple method for computing the inverse of a numerator relationship matrix used in prediction of breeding values. *Biometrics*. 1976;32:69–83.
64. Wray NR, Hill WG. Asymptotic rates of response from index selection. *Anim Prod*. 1989;49:217–27.

Submit your next manuscript to BioMed Central  
and we will help you at every step:

- We accept pre-submission inquiries
- Our selector tool helps you to find the most relevant journal
- We provide round the clock customer support
- Convenient online submission
- Thorough peer review
- Inclusion in PubMed and all major indexing services
- Maximum visibility for your research

Submit your manuscript at  
[www.biomedcentral.com/submit](http://www.biomedcentral.com/submit)

