



Arkilanian, A. A., Clements, C. F., Ozgul, A., & Baruah, G. (2020). Effect of time series length and resolution on abundance- and trait-based early warning signals of population declines. *Ecology*, 101(7), [e03040]. <https://doi.org/10.1002/ecy.3040>

Publisher's PDF, also known as Version of record

Link to published version (if available):
[10.1002/ecy.3040](https://doi.org/10.1002/ecy.3040)

[Link to publication record in Explore Bristol Research](#)
PDF-document

This is the final published version of the article (version of record). It first appeared online via Wiley at <https://esajournals.onlinelibrary.wiley.com/doi/full/10.1002/ecy.3040> . Please refer to any applicable terms of use of the publisher.

University of Bristol - Explore Bristol Research

General rights

This document is made available in accordance with publisher policies. Please cite only the published version using the reference above. Full terms of use are available:
<http://www.bristol.ac.uk/red/research-policy/pure/user-guides/ebr-terms/>



Effect of time series length and resolution on abundance- and trait-based early warning signals of population declines

A. A. ARKILANIAN ¹, C. F. CLEMENTS,^{2,3} A. OZGUL,² AND G. BARUAH ^{2,4}

¹Department of Biology, McGill University, Montreal, Quebec H3A 1B1 Canada

²Department of Evolutionary Biology and Environmental studies, University of Zurich, Winterthurerstrasse 30, Zurich 8057 Switzerland

³Bristol Life Sciences Building, 24 Tyndall Avenue, Bristol BS8 1TQ United Kingdom

Citation: Arkilanian, A. A., C. F. Clements, A. Ozgul, and G. Baruah. 2020. Effect of time series length and resolution on abundance- and trait-based early warning signals of population declines. *Ecology* 101(7):e03040. 10.1002/ecy.3040

Abstract. Natural populations are increasingly threatened with collapse at the hands of anthropogenic effects. Predicting population collapse with the help of generic early warning signals (EWS) may provide a prospective tool for identifying species or populations at highest risk. However, pattern-to-process methods such as EWS have a multitude of challenges to overcome to be useful, including the low signal-to-noise ratio of ecological systems and the need for high quality time series data. The inclusion of trait dynamics with EWS has been proposed as a more robust tool to predict population collapse. However, the length and resolution of available time series are highly variable from one system to another, especially when generation time is considered. As yet, it remains unknown how this variability with regards to generation time will alter the efficacy of EWS. Here we take both a simulation- and experimental-based approach to assess the impacts of relative time series length and resolution on the forecasting ability of EWS. We show that EWS' performance decreases with decreasing time-series length. However, there was no evident decrease in EWS performance as resolution decreased. Our simulations suggest a relative time series length between 10 and five generations as a minimum requirement for accurate forecasting by abundance-based EWS. However, when trait information is included alongside abundance-based EWS, we find positive signals at lengths one-half of what was required without them. We suggest that, in systems where specific traits are known to affect demography, trait data should be monitored and included alongside abundance data to improve forecasting reliability.

Key words: body size; early warning signals; fold bifurcation; population collapse; reliability; sampling; time series length; time series resolution; trait-based EWS; transcritical model.

INTRODUCTION

Anthropogenic pressures have long been known to reduce the resilience of ecological systems, leaving them vulnerable to transitioning into undesirable states where the systems' ability to provide valuable ecosystem services is diminished. Such undesirable transitions have occurred in multiple systems such as in the global whale stock collapse of the 20th century due to overfishing (Hilborn et al. 2003, Clements et al. 2017); lake eutrophication through heavy nutrient input (Smith and Schindler 2009); or coral bleaching as a result of increased ocean warming (Hughes et al. 2017). In many cases, recovery from such a perturbed state can be difficult as complex systems such as those seen in ecology often show hysteresis (Folke et al. 2004, Scheffer et al. 2009), thus driving a need to minimize impacts on biological

systems, as well as a developing effective methods to monitor them (Costanza et al. 1997).

Early warning signals (EWS) have been shown to predict population collapses (Wissel 1984, Drake and Griffen 2010, Dai et al. 2012, Clements and Ozgul 2018) and shifts in ecosystem states (Scheffer et al. 2009, Carpenter et al. 2011). These indicators provide the possibility to intervene and reverse these undesirable events (Biggs et al. 2009, Pace et al. 2017). Classical EWS are statistical signatures that arise as a result of a phenomenon known as critical slowing down (CSD) that occurs prior to an ecosystem transition (Dakos et al. 2008, Scheffer et al. 2009, Clements and Ozgul 2018). CSD occurs as a system loses stability in the face of increasing external stress and takes longer to return to its original equilibrium state (Wissel 1984). Directly measuring CSD requires monitoring the return rate of the system, which is challenging to do in natural systems. Alternatively, whether a system is experiencing CSD can be inferred through other statistical metrics measured over state-based data, for example abundance time series. Some

Manuscript received 16 December 2019; accepted 30 January 2020; final version received 26 February 2020. Corresponding Editor: José Miguel Ponciano.

⁴ Corresponding Author. E-mail: gaurav.baruah@ieu.uzh.ch

proposed statistical signatures related to the return rate of a dynamical system are variance and autocorrelation, although various other metrics have also been developed (Dakos et al. 2012a). Increases in variance and autocorrelation in abundance time series, known as classical abundance-based EWS (Drake and Griffen 2010, Dai et al. 2012), are shown both theoretically and experimentally to occur in systems approaching transition (Drake and Griffen 2010, Carpenter et al. 2011, Dakos et al. 2012b, Clements and Ozgul 2016b).

Increases in variance and autocorrelation, along with other classical abundance-based EWS, provide an ideal generic method that responds to the dynamics of the system independent of any system-specific data such as intrinsic demographic processes and extrinsic environmental factors. However, the performance of these classical EWS has been questioned in numerous simulations (Hastings and Wysham 2010, Boerlijst et al. 2013, Clements et al. 2015, Burthe et al. 2016, Clements and Ozgul 2016a, Dutta et al. 2018) as well as in experimental and field data (Pace et al. 2017, Wilkinson et al. 2017). Recent studies on data quality have shown that these signals might require high-resolution time series data to produce reliable forecasting (Clements et al. 2015). Given that EWS are statistics derived from abundance time series, the quality of data available is critical to obtain a strong forecast by EWS and temporal limitations might have many consequences.

In monitoring programs from natural ecological systems high-resolution data can be hard to achieve. In addition, data can be spatially and temporally limited due to constraints on resources. Thus, data from ecological systems can often present with short time series lengths, low sampling resolutions, or both (Clements et al. 2015). Further, abundance time series data collected in field or experimental populations can vary greatly in temporal quality. For instance, in a laboratory experiment, populations of *Didinium nasutum* were sampled roughly once every two generations for 45 d before a collapse of the population occurred (Clements and Ozgul 2016a) while in a field experiment data on a lake system was collected once a day during the summer season for three years (Carpenter et al. 2011). Similarly, in wild populations demographic data is generally collected monthly (van Benthem et al. 2017) or annually (Walle et al. 2018). Due to these differences in sampling effort the temporal quality of the time series relative to the process rate of the system (for example the generation time of the species sampled) will vary (Clements and Ozgul 2018). Previous work suggested that the length and resolution of data being analyzed in relation to the process rate, that is: the relative length and resolution, could alter the rate at which a tipping point occurs (Spanbauer et al. 2016). Following this, it has been shown that the speed at which a tipping point occurs can affect the detectability of abundance-based EWS (Clements and Ozgul 2016b). It is thus unknown how the temporal quality of the time series relative to the generation time

of the organisms being monitored will affect the detectability of abundance-based EWS. Given that wild populations are monitored using varied sampling efforts, it is important to further our understanding of the relative length and resolution of time series needed to derive reliable EWS. In turn, this would help lay the foundation for generalizable guidelines for the monitoring of populations with the aim of reliably predicting population declines, or whether time series that are currently available will be suitable for detecting abundance-based EWS.

Composite EWS have been proposed as a more reliable method whereby multiple leading indicators are combined to increase overall forecasting ability (Drake and Griffen 2010). Recent work has used this composite approach to drive the inclusion of fitness-related phenotypic trait data, specifically body size, alongside abundance-based methods to create trait-based EWS (Clements and Ozgul 2016a, Clements et al. 2017). The motivation behind the use of fitness-related trait data combined with leading indicators comes from a body of work providing evidence that individual traits affected by changes in the external environment are linked with concurrent demographic changes (Ozgul et al. 2009, Pigeon et al. 2017, Baruah et al. 2019b). In particular, individual plasticity in body size has been shown to buffer environmental change to higher trophic levels for example in the face of reduced food availability, climate change, and increased pollution (Brown et al. 2004, Cheung et al. 2013). For example, previous study has shown that shifts in body size can accompany a transition in diatom communities (Spanbauer et al. 2016). In addition, trait-based signals derived from body size data have been shown to be more robust than traditional abundance-based leading indicators (Clements and Ozgul 2016a, Clements et al. 2017, Baruah et al. 2019b). There remains a need to fully assess whether the inclusion of body-size data leads to any considerable improvement in forecasting population collapses in the face of common data quality issues, such as shortened time series lengths.

In this paper, we use model simulations and data from microcosm populations of *Didinium nasutum* (Clements and Ozgul 2016a) to test and compare the effects of sampling length and resolution on the detectability of population collapse by both classical abundance-based EWS as well as trait-based EWS. We first investigated the strength and reliability of abundance-based EWS across a range of sampling lengths and resolutions. Subsequently, we tested whether the inclusion of trait dynamics (body size) can increase forecasting ability even when data was sparse.

METHODS

Simulations: transcritical and fold bifurcation model

We first modeled the logistic growth of a population that moves from an underexploited state to critically

exploited state through a non-catastrophic transcritical bifurcation. The population is forced through the transcritical bifurcation via a linear harvesting regime. The dynamics of this population are given by

$$dN/dt = rN(1 - N/K) + \sigma NdW - c_t N \quad (1)$$

where r is the growth rate of the population (0.5 individuals/d), K is the carrying capacity (100 individuals), c_t is the harvesting rate, and σNdW is the Gaussian distributed white noise process with mean 0 and standard deviation σ (1.5). Time step dt used was 0.3 for each of the stochastic simulations and was implemented using the Euler approximation. The simulation was run for 100 total time steps.

Next, to simulate the dynamics of population collapse via a fold catastrophe, we used a second model where harvesting of individuals of the population followed a nonlinear function (May 1977, Scheffer et al. 2009). The parameters in this model are identical to those of the transcritical catastrophe model except for the addition of h , the half-saturation constant

$$dN/dt = rN(1 - N/K) + \sigma NdW - c_t N^2 / (h^2 + N^2) \quad (2)$$

Population collapse and abundance-based EWS

We simulated population collapse for the two models by increasing the value of the harvest parameter c_t linearly with time. We used three different levels of forcing (Clements and Ozgul 2016b): (1) slow forcing, where the rate of forcing increased linearly from 0.03 and 0.0015 in fold and transcritical models, respectively; (2) moderate forcing, where the forcing parameter c_t increased linearly at the rate of 0.045 and 0.0025 in fold and transcritical models, respectively; and fast forcing: where the forcing parameter c_t increased linearly at the rate of 0.07 and 0.004 in fold and transcritical bifurcation models, respectively. For each simulated population's time series data, we estimated the bifurcation time point by fitting GAMS (generalized additive modeling) to $1/N(dN/dt)$ over time t . The time point at which $1/N(dN/dt) < 0$ is then our estimated bifurcation time point. For abundance-based EWS' analyses, we discarded abundance time series data after the estimated bifurcation point. We then applied generic EWS of population collapse by using the earlywarnings package (Dakos et al. 2012a) in R version 3.5.2 (R Core Team 2018). Specifically, we used two early warning indicators: autocorrelation at first-lag (ar(1)) and standard deviation (SD). Other indicators, such as return rate, first-order autoregressive coefficient, and coefficient of variation can theoretically be derived from these two main indicators. We used Gaussian detrending to remove any trends in the abundance time series data. To quantify the strength of

population collapse, we calculated Kendall's tau correlation coefficients of the statistical indicators over time. Strong positive Kendall's tau correlation of the statistical indicators (SD, ar(1)) with time would indicate an approaching population collapse (Dakos et al. 2012b). We further quantified the rate of false negatives as the number of times Kendall's tau value calculated to be less than or equal to zero within the set of replicate time series. While previous work has suggested that a strong trend is indicated by a Kendall's tau correlation approaching one (Dakos et al. 2012b), we use this false negative metric as an alternative visualization to presenting raw Kendall's tau values.

Effect of sampling in relation to simulated population dynamics on EWS

To study the effect of varying resolutions on the detectability of collapse, we subset the data into four data sets that varied in their resolution: as the generation time for the populations in the simulation models is $t = 1$, sampling of the abundance time series was done every quarter of t , every half of t , every t , and every two t . Interpolation between points was not performed. With these four data sets, we explored the effect of different sampling resolutions on the efficacy of EWS forecasting. Specifically, we assessed the resolution required to detect positive EWS. We assessed the effect of these sampling regimes on EWS for the three different levels of environmental forcing as mentioned in *Population collapse and abundance-based EWS*. Next, we calculated Kendall's tau correlation coefficients as a measure of the strength of EWS and rates of false negatives as a measure of the reliability of EWS for these sampling regimes and for each level of environmental forcing.

Effect of varying length of simulation abundance time series on EWS

To quantify the effect of varying lengths of abundance time series on EWS, we used the quarter generation sampling resolution data set acquired following *Effect of sampling in relation to simulated population dynamics on EWS*. We used this resolution as it allowed us to explore the largest range of time series lengths. Next, we quantified the strength and reliability of EWS on the entire length of the abundance time series and then re-quantified it using the same time series but with the earliest data point removed (or the furthest data point from the bifurcation point). We repeated this process by sequentially removing the earliest data point and re-performing EWS analysis until the time series was six data points, where it becomes too short for any meaningful analysis. SD and ar(1) that were estimated on abundance data using the earlywarnings package typically uses a sliding window approach where the window size is generally 50% of the time series length. At six data points, a rolling window size of 50% of the time series would be just three

data points, where estimating autocorrelation and standard deviation would lead to spurious values. We performed this length reduction analysis on time series from the three forcing scenarios mentioned in *Population collapse and abundance-based EWS*. Finally, we calculated Kendall's tau correlation coefficients as a measure of the strength of EWS and rates of false negatives as a measure of the reliability of EWS for these sampling regimes and for each level of environmental forcing.

The parameters used in our simulations were chosen such that in all three forcing scenarios populations persisted long enough to return sufficiently long time series. This allowed us to later reduce their length and reanalyze them giving us a range of time series lengths for each resolution and forcing scenario.

Experimental data

In addition to the model simulations, we also analyzed an experimental microcosm data set. In this experiment, microcosm populations were forced to collapse by varying the rate of decline in food availability over time in four different scenarios: (1) fast decline in food availability, (2) moderate decline in food availability, (3) slow decline in food availability, (4) constant food availability as the control treatment. The microcosm populations consisted of protozoan ciliate *Didinium nasutum* feeding on *Paramecium caudatum*. This particular experiment used a total of 60 replicate populations, where 15 replicates were used per treatment. In our study, we used the microcosm data only from the three different deteriorating environments (fast, moderate, and slow decline in food availability). For details of the experimental design, refer to Clements and Ozgul 2016a.

Effect of varying length of experimental time series on EWS.—For each of the three experimental treatments (fast, moderate, and slow), we estimated the effect of different lengths of time series on the efficacy of EWS as was done with simulation data in *Effect of varying length of simulation abundance time series on EWS* to directly compare our simulation results with the experimental data.

Effect of sampling in relation to microcosm population dynamics on EWS.—We subset the experimental data into two sampling regimes. Since *Didinium nasutum* has a generation time of roughly 2 d (Beers 1926), sampling of the abundance time series data was done (1) every one-half generation (every day), (2) every generation (every 2 d). Subsampling of this kind was done for each of the three experimental treatments of the microcosm population collapse. Next, as was done with simulation data, we quantified Kendall's tau correlation coefficients as a measure of the strength of EWS and rates of false negatives as a measure of the reliability of EWS for these sampling regimes and for each level of environmental forcing.

Inclusion of body-size data: trait-based EWS

We wanted to assess whether including trait dynamic information (body size) alongside abundance-based EWS would improve the predictability of population collapse for the scenarios of time series length and for the sampling resolutions in the experimental data for the three forcing experimental treatments. To evaluate the utility of trait-based EWS for the different sampling resolutions and lengths of abundance time series, data from mean body size was incorporated with the leading indicators in an additive manner (Clements and Ozgul 2016a). We *z*-standardized abundance-based EWS (standard deviation (SD), autocorrelation at-lag-1 (ar(1)), and body-size time series data. The length of body-size time series that was used was the same as the corresponding replicate abundance time series. Before a population collapse, SD and ar(1) are anticipated to increase over time, while body size is expected to decline as food availability in the experimental treatment decreases. As a consequence, *z*-standardized body-size time series were multiplied by -1 so that they could be included alongside standardized abundance-based EWS. Next, standardized abundance-based EWS were then added to standardized mean body-size time series to create trait-based EWS. Next, we evaluated two trait-based EWS metrics namely ar(1) + trait and SD + trait, and trait-only EWS:trait. Finally, we compared these three trait-based EWS in terms of strength and reliability of forecasting a population collapse with the abundance-based statistical EWS for both the scenarios of varying time series length and varying sampling resolution.

RESULTS

Effect of sampling resolution on abundance-based EWS (simulated data)

Reducing the resolution of the time series used for analysis with abundance-based EWS in simulated populations did not lead to reductions in the strength of abundance-based indicators of population collapse for slow and fast forcing levels. However, for moderate forcing levels, particularly for SD, decreases in the resolution of the time series generally led to decreases in the median strength of the signal of population collapse (Fig. 1, yellow; Appendix S1: Fig. S4–S6). Further, at highest resolutions in the moderate forcing levels, we observed the highest Kendall's tau values indicating that time series at this resolution returned the most confident forecasts capable of passing more strict thresholds than our own at a tau value of zero.

While the median strength of signals (SD and ar(1)) did not drop with decreasing resolution (Fig. 1), the proportion of false negatives increased with decreasing resolution for SD only, particularly for slow and moderate environmental forcing (Table 1). In terms of fast forcing, however, the lowest sampling resolution had the lowest

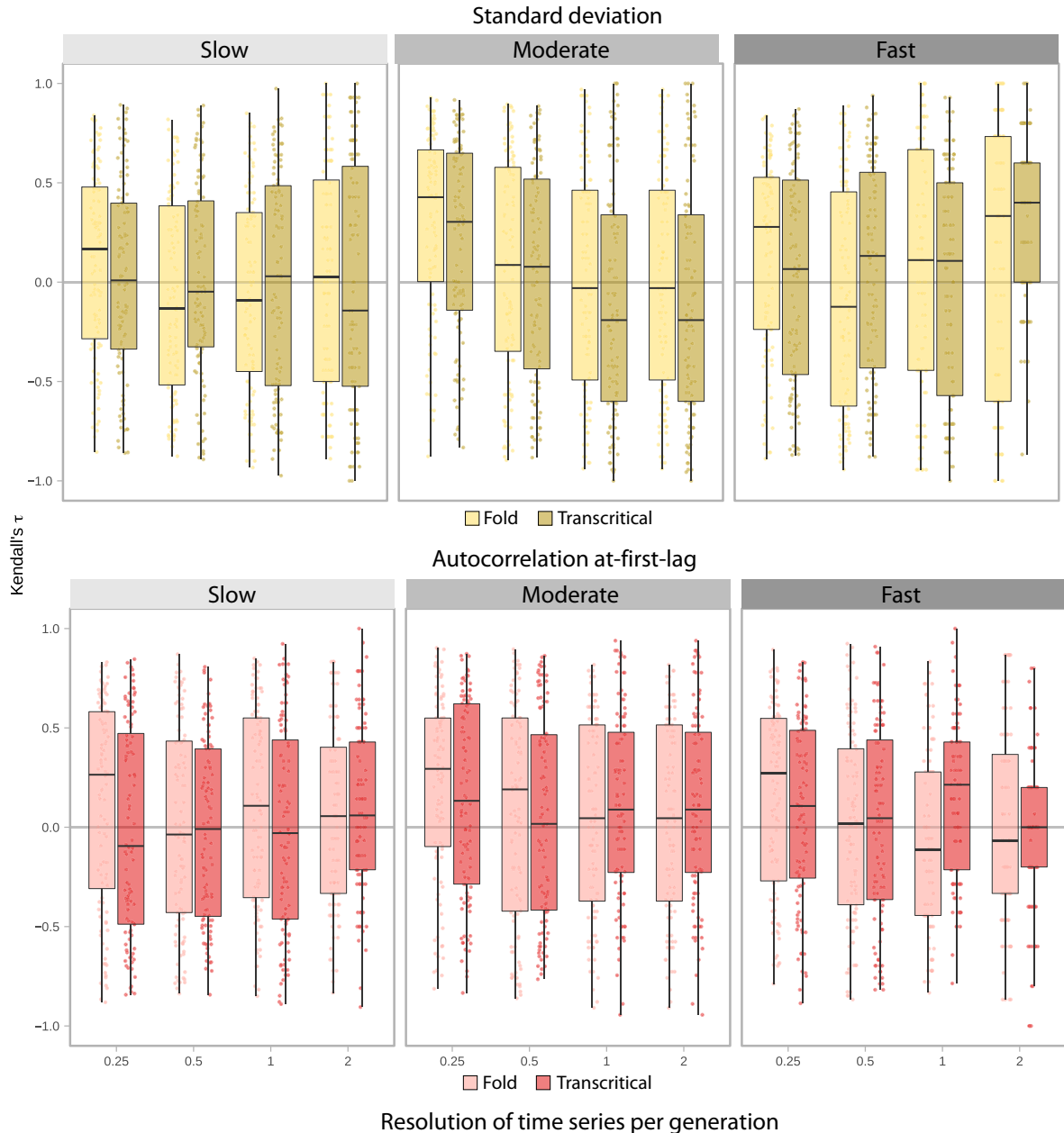


FIG. 1. Box plots of the strength of abundance-based early warning signals of population collapse across decreasing resolutions of subsampling in simulated populations subjected to collapse by harvesting. The data is split into subplots based on the bifurcation model simulated (fold, transcritical) and forcing level (slow, medium, fast). Box plots are further split by metric used (yellow, standard deviation; red, autocorrelation at-first-lag). Each box represents the median Kendall’s tau value (shown on the y-axis) across replicate time series across three forcing level for different sampling resolutions. The x-axis shows the resolution of sampling in numbers of generations such that a value of 2 indicates that sampling was performed every two generations and 0.25 denotes sampling every one-quarter generation.

number of false negatives in comparison to the highest sampling resolution for SD. This suggested that SD was predicting population collapse better in low resolution time-series data than in high-resolution time-series data. Fast forcing and low resolution sampling in combination returned short time-series length, which resulted in

higher variation between consecutive data points. This caused a high Kendall’s tau value for SD. For ar(1), however, there was no particular trend in terms of either signal strength or rate of false negatives with decreasing time-series resolution (Table 1). Our simulation results demonstrated that forecasting strength and reliability of

EWS in predicting population collapses were weak and did not depend on sampling resolutions.

Effect of length of time series on abundance-based EWS (simulated data)

In simulations, decreasing the length of the sampling time series before either a fold or transcritical bifurcation negatively affected the performance of abundance-based EWS ar(1) and SD across all three intensities (Fig. 2; Appendix S1: Table S1). However, the decline in performance of abundance-based EWS as time-series length decrease was not as steep. For moderate forcing, ar(1) and SD had a decline in Kendall's tau value (slope = -0.09 and $R^2 = 0.8$ for ar(1); slope = -0.07 $R^2 = 0.71$ for SD) as length of time series decreased regardless of the type of bifurcation. Moreover, as forcing increased, the decline of signal reliability (Fig. 2B) and signal strength (Fig. 2A), as indicated by the rate of false negatives and the Kendall's tau value respectively, saw a steeper decline. With fast forcing, when time series dropped below approximately ten generations long both EWS performed poorly with Kendall's tau values near zero (Fig. 2A) and approximately 50% false negatives (Fig. 2B). With moderate forcing, this minimum length drops closer to five generation long time series. Finally, with slow forcing, the minimum time series length becomes less clear, particularly for fold bifurcation, as slopes of Kendall's tau value against length of time series were small for both ar(1) (slope = -0.01 , $R^2 = 0.39$) and SD (slope = -0.0003 , $R^2 = -0.009$). For, transcritical bifurcation and for slow forcing (dotted lines, Fig. 2A, slow), however, the minimum length drops to around 5–10 generation long time series for both SD (slope = -0.075 , $R^2 = 0.22$) and ar(1) (slope = -0.09 , $R^2 = 0.43$).

Effect of sampling resolution on abundance and trait-based EWS (experimental data)

Similar to simulation results, decreasing the resolution of the time series in microcosm populations did not lead to decreases in the strength of abundance-based EWS (Fig. 3). Strength in SD and ar(1) in forecasting

population collapse remained nearly constant as resolution was decreased (Fig. 3). Results from the experimental data also states that strength in predicting population collapse did not depend on changes in time series resolution.

However, including information from mean body-size data alongside abundance-based EWS to create trait-based EWS led to significant increases in strength and reliability of predicting population collapse regardless of forcing strength, or time series resolutions (Fig. 3, dark colors).

The rate of false negatives was high for abundance-based EWS across the two different time-series resolutions for the experimental data (Appendix S1: Fig. S2). In comparison to ar(1) across the sampling resolutions, the false negative rate of SD was higher in slow and fast decline in food availability. When the resolution of time series decreased the rate of false negatives increased for abundance-based EWS, particularly for ar(1) in slow and fast decline in food availability. For moderate decline in food availability, rate of false negatives decreased as time-series resolution decreased (Appendix S1: Fig. S2). In contrast, trait-based EWS (ar(1) + trait; SD + trait) and trait-only EWS (trait) were reliable in forecasting population collapse even when time-series resolution was low.

Effect of length of time series on abundance and trait-based EWS (experimental data)

For most of the forcing scenarios and time-series lengths tested, abundance-based EWS derived from microcosm data did not produce a positive forecast of population decline. In the treatment of slow decline in food availability abundance-based EWS saw some increases in Kendall's tau values but mostly these remained negative. For moderate decline in food availability, time-series length did not have any impact on the performance of abundance-based EWS. For fast decline in food availability, only for SD, there was noticeable decrease in performance as time-series length decreased (Fig. 4A, B).

Furthermore, trait-based EWS, i.e., including body-size information alongside abundance EWS, and trait-

TABLE 1. Rate of false negatives from abundance-based early warning signals (EWS) of population collapse in simulated populations led to collapse through harvesting at three different rates.

Measure Resolution	Strength of forcing											
	Slow				Moderate				Fast			
	2	1	0.5	0.25	2	1	0.50	0.25	2	1	0.50	0.25
SD	52.5	52.4	51.5	45.1	51.4	50.4	44.5	41.7	39.5	51	50.4	58.7
ar(1)	46.5	46.1	49.7	46.6	46.4	47.8	48	42.6	52.5	46.5	48.2	60.7

Notes: The rate of false negatives reported is the number of false negative signals returned divided by the number of true positive signals. Results are further split by four time series resolutions tested (a value of two indicates sampling was performed every two generations) and by the metric used as an EWS.

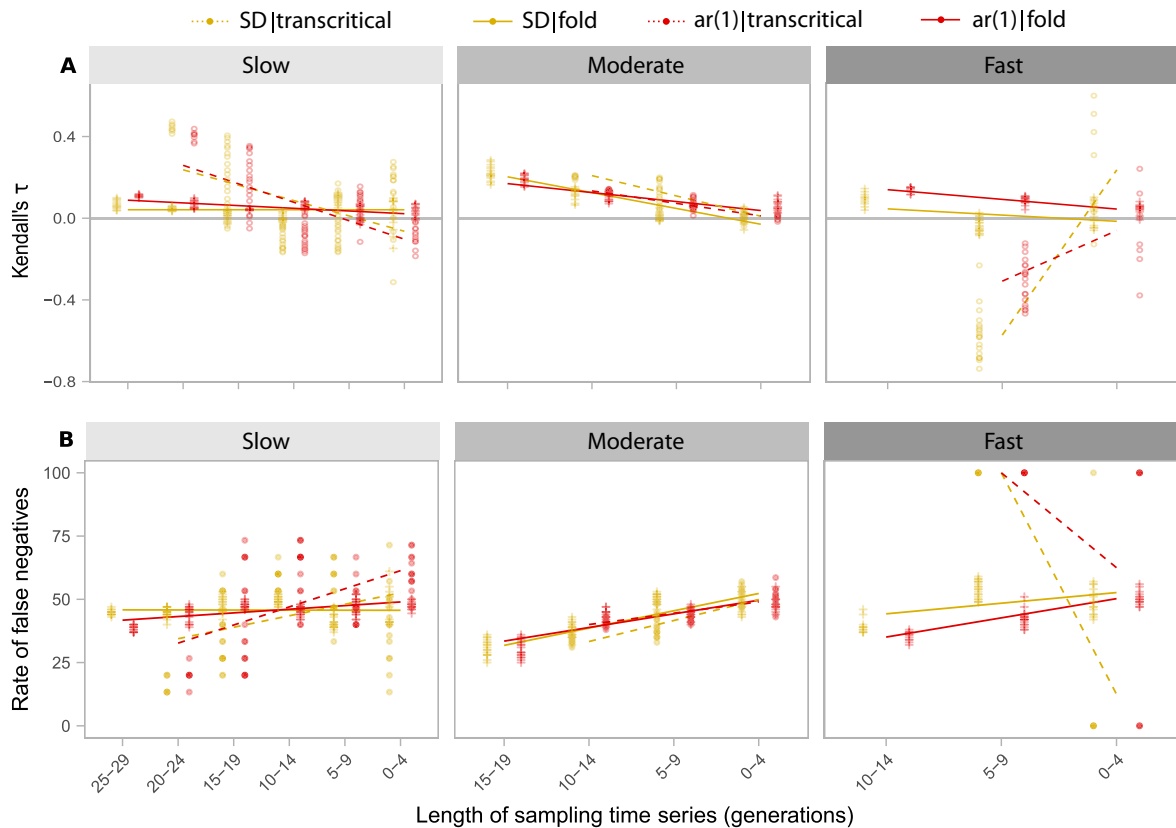


FIG. 2. Performance of abundance-based early warning signals of population collapse across decreasing sampling time series lengths in simulated populations subjected to collapse by different rates of forcing (harvesting). The data is split into subplots based on forcing intensity (slow, moderate, fast) and further split by metric used (yellow, standard deviation; red, autocorrelation at-lag-1) and bifurcation model simulated (solid, fold model; dashed, transcritical model). Each point represents (A) the mean Kendall's tau correlation coefficient or (B) rate of false negatives on the y-axis of 100 replicate simulations of population collapse. The x-axis represents length of time series analyzed.

only information, significantly improved the strength as well as reliability of population collapse across different length in time series data for different levels of environmental forcing. With trait-based EWS, or trait-only EWS, Kendall's tau value always remained positive regardless of very short time series and strength of environmental forcing (Fig. 4A, B, solid lines). Only during slow environmental forcing scenario, and when length of time series was less than five generations, trait + ar(1) was unable to predict population collapse.

DISCUSSION

Generic EWS would provide a unique tool for conservation prioritization and management of populations facing increased stress with changes to their abiotic environment if they are detectable prior to their collapse (Scheffer et al. 2009, Dakos et al. 2012b, Burthe et al. 2016). The attraction of generic EWS is their relative simplicity; they are easy to calculate and require only state data such as the abundance of a population (Drake and Griffen 2010, Boettiger et al. 2013, Dutta et al. 2018). Alternative approaches such as trait-based EWS

have been developed with the goal of providing more reliable predictions of population collapse but require additional data to calculate (Clements and Ozgul 2016a, Clements et al. 2017). For both complementary approaches how the relative length and resolution of a time series may affect their performance has thus far remained unknown. This question is critical for our understanding of the utility and applicability of these methods (Boerlijst et al. 2013, Boettiger and Hastings 2013). Here, using simulations and experimental data, we show that time series length and resolution relative to the process rate of the system in question influence the performance of abundance-based EWS. Further, we found that including average body size with abundance-based EWS leads to stronger and more reliable signals even when temporal length and resolution of the time series are low.

Effect of resolution of sampling time series on abundance-based and trait-based EWS

Our simulations indicated that there was no ideal sampling resolution that increases either the reliability or the

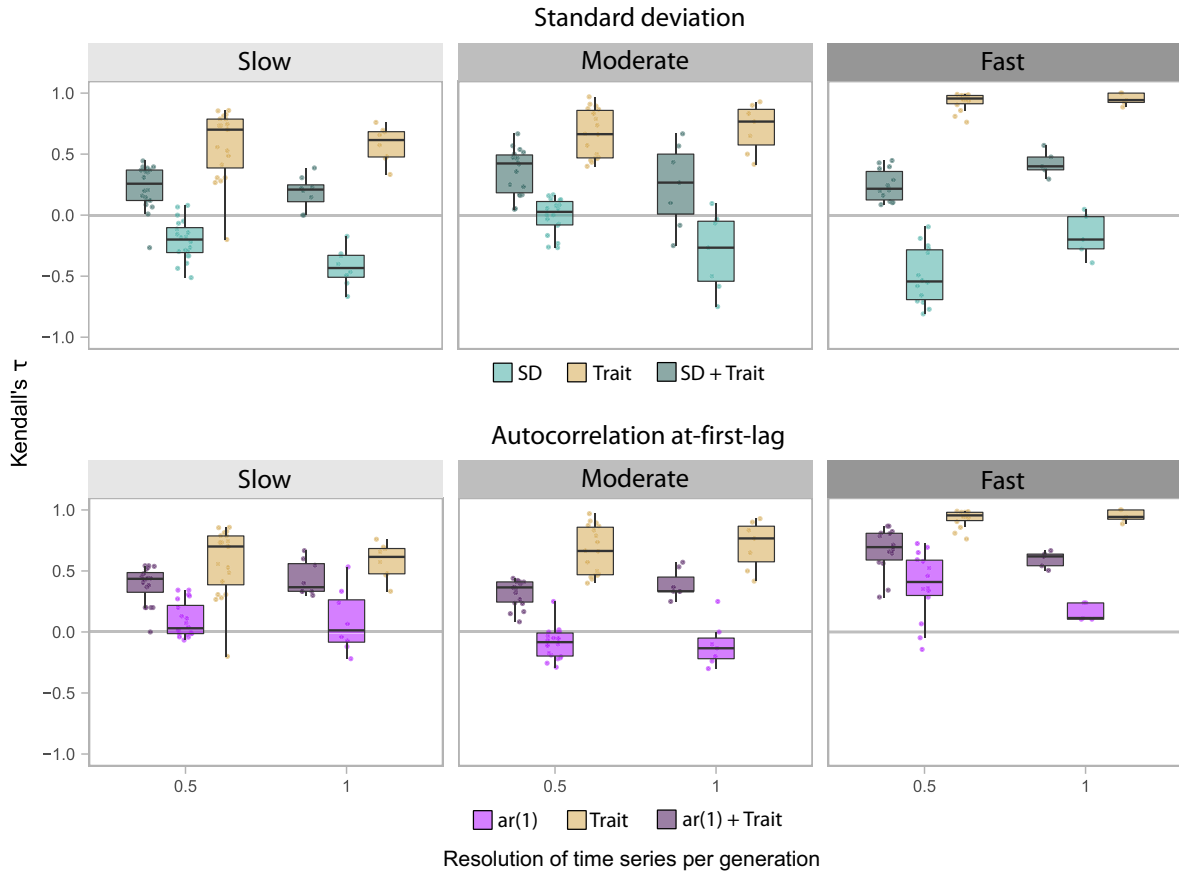


FIG. 3. Performance of abundance-based (SD, ar(1)), trait-based EWS (SD + trait, ar(1)+ trait), and trait-only EWS (trait) of population collapse across decreasing sampling time series resolutions for the experimental data of Clements and Ozgul (2016). Plots are organized into subplots based on the forcing intensity (slow, medium, fast) and further split by metric used. Each box represents the Kendall's tau value (on the y-axis) for each resolution studied (on the x-axis). Note that trait-based EWS and trait-only EWS had higher strength than abundance-based EWS.

forecasting strength of abundance-based EWS in predicting population collapses. Only when environmental forcing was moderate, high sampling resolution resulted in reliable forecasts of population collapse by SD and less slightly by ar(1). In general, irrespective of whether population transition was transcritical or fold, time series resolution did not have any considerable impact on the performance of abundance-based EWS. Our simulations also showed that reliability of SD was high for fast forcing and lowest time series resolution. Such a result, although unintuitive, was due to the combined effect of fast forcing and low sampling resolution. Combination of fast forcing and low sampling resolution produced very short time series length (nine data points). Applying EWS analysis with a rolling window size of 50% of the time series length resulted in further reduction of the time series length. As a consequence, high variability between consecutive data points had led to high SD in general leading to strong Kendall's tau value. However, in experimental microcosm data, ar(1) performed better in forecasting population collapse than SD when time series resolution was manipulated. Reliability of

abundance-based EWS, particularly SD, in forecasting population collapse for the experimental microcosms was rather poor. Low reliability (high false negatives) of SD in microcosms could probably be attributed to the fact that experimental systems are inherently more stochastic. Our simulated populations were likely subjected to smaller amounts of stochasticity in population size compared to our experimental populations. Given that SD is sensitive to rising stochasticity in a system (Boettiger and Hastings 2013), one could expect SD to perform better when there is a high level of environmental stochasticity. Indeed, results from replicate simulations, where we varied stochasticity levels and measured the performance of abundance-based EWS suggested that SD performed relatively better when environmental stochasticity was higher. However, ar(1), regardless of low or high environmental stochasticity, performed better than SD, confirming our speculation on the performance of ar(1) when environmental stochasticity was high (Appendix S1: Fig. S1).

In addition, abundance-based EWS showed a greater sensitivity to system stochasticity than trait-based EWS

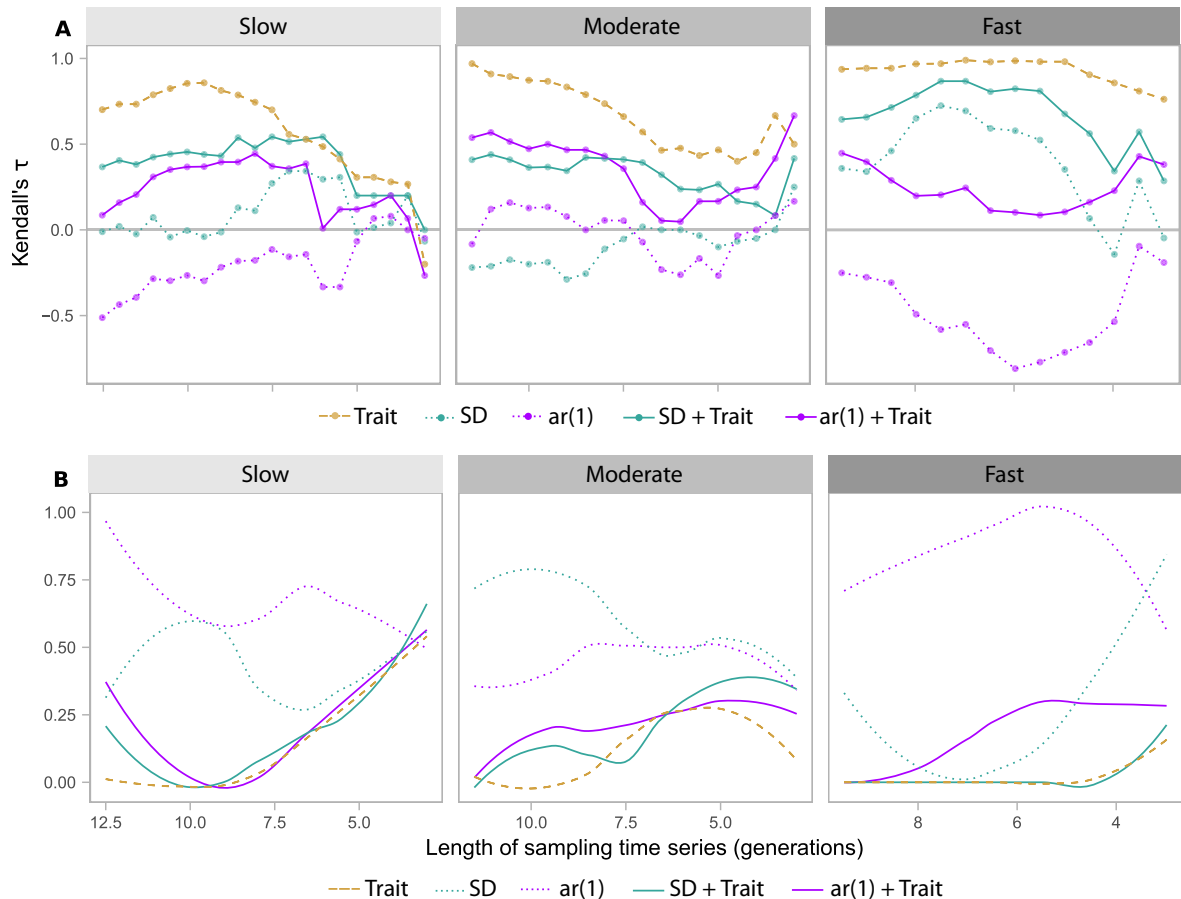


FIG. 4. Performance of abundance-based (SD, ar(1)), and trait-based EWS (SD + trait, ar(1)+ trait), and trait-only EWS (trait) of population collapse across decreasing sampling time series lengths for the experimental data of Clements and Ozgul (2016). Plots are organized into subplots based on the forcing intensity (slow, medium, fast). The x-axis is the length of time series data analyzed and the y-axis denotes (A) mean Kendall's Tau value and (B) rate of false negatives. Note that trait-based EWS and trait-only EWS had higher strength (shown in A) and higher reliability (shown in B: false negative plots) than abundance-based EWS. False negative plots were produced using loess smoothing.

did; the latter did not present any obvious differences in performance between metrics used (Fig. 3). This is possibly an effect of adding phenotypic data to abundance data, which stabilizes the signal through time and reduces stochasticity (Fig. 3). This is an important finding if abundance-based EWS are to be used to monitor natural populations, which likely have more stochasticity than laboratory populations.

As observed with abundance-based EWS, performance of trait-based EWS also did not decrease with decreasing sampling resolution (Fig. 3). However, the performance of trait-based EWS was much better than abundance-based EWS alone. Trait-based EWS calculated with the lowest resolution in the experimental populations still derived a more reliable forecast than abundance-based EWS calculated with the highest possible resolution.

Our findings suggest that abundance-based EWS derived from autocorrelation at-first-lag would perform better in natural populations subjected to high levels of

stochasticity when compared with standard deviation derived signals when the resolution of available abundance time series is low. On the other hand, the inclusion of trait data with either metric or trait data alone, led both to an increase in EWS performance when faced with reduced sampling time series resolutions and minimized any important differences between the two time series metrics used. Thus, whenever possible, trait-based EWS will likely outperform abundance-based EWS in natural populations (but see Baruah et al. 2019b) and, when trait data is not available, abundance-based EWS derived from autocorrelation at-first-lag are more powerful and reliable indicators.

Effect of length of sampling time series on abundance-based and trait-based EWS

Reducing the length of the sampling time series in simulated data negatively affected the performance of abundance-based EWS. In our simulation study, having

longer time series led to stronger EWS, particularly for slow and moderate levels of environmental forcing and for transcritical bifurcation (dashed lines, Fig. 2). Time series from slow and moderate forcing scenarios with lengths less than five generations returned weaker forecasts of population collapse with higher rates of false negatives (Fig. 2). In the case of fast forcing and only for the population simulated with a transcritical model, length of time series no longer had an effect on the predictability of collapse (Fig. 2, dashed lines). In the context of a ciliate population such as the one used in the microcosms of this paper (*D. nasutum*), 10 generations corresponded to roughly 20 d. Twenty days' worth of sampling might seem feasible to generate reliable forecasting for a ciliate population. However, for this same reliability in a population experiencing rapid forcing, 22–35 yr of sampling would be required in the case of *Thynnus thynnus* (Atlantic bluefin tuna): an endangered species of high economic concern with a generation time between 2.2 and 3.5 yr (Collette et al. 2011). For organisms with longer generation times such as *T. thynnus*, the required investment of resources and time becomes an important consideration if there is a desire to monitor populations using abundance-based EWS. In addition, we found that abundance time series require a minimum of 10 generations worth of data when forcing was fast and a minimum of 5 when forcing was moderate (Fig. 2). This finding suggests that in situations where forcing was more intense and, thus, populations are most at risk, the requirement for good quality data is extended. This requirement of long time series was a clear shortcoming of abundance-based EWS for organisms with long generation times and populations experiencing moderate to rapid forcing.

In our microcosm study, the effect of time series length on the Kendall's tau metric was less clear than in the simulation. However, abundance-based EWS rarely had the length of sampling required to make a confident forecast of collapse. It appears that regardless of improvements brought about by the increased length of the sampling time series, most abundance-based EWS did not provide a confident forecast even with the maximum length of sampling time series (between 10 and 12.5 generations). In our simulations we showed that abundance time series need a minimum of 10 generations of data to provide an accurate forecast. These microcosm results show that the required minimum length of sampling exceeds 10 generations in controlled laboratory settings. Thus, we could expect that, in natural populations subjected to higher levels of stochasticity the minimum length of sampling might exceed even that which was required in the microcosms. However, in natural populations, there could be the possibility to measure phenotypic data and derive trait-based EWS, which we had additionally assessed. The addition of phenotypic data with abundance data improved forecasting in the microcosms. Trait-based EWS, that included body-size information alongside abundance-based EWS,

offered a significant improvement over abundance-based EWS, providing a positive forecast of collapse for all time series lengths tested.

Our modeling scenario of time series length and resolution was focused solely on abundance dynamics, and ignored trait dynamics. Abundance data are the most available, with databases such as Living Planet Index (LPI) offering an opportunity to analyze abundance time series data (>22,000) for future forecasts of population declines at a global scale. However, average time series length in the LPI databases is around 10.3 yr and median length of 6 yr. It was thus of foremost importance to understand whether short time series of different resolutions would affect the predictability of population decline before these statistical tools could be applied widely. Trait data, such as body-size time series are less widely available. Hence, the main motivation of our work was to develop an understanding of the efficacy of abundance-based EWS in forecasting population decline when time series lengths were variable and were of different resolutions.

Trait-based simulations of population dynamics could essentially be done using a quantitative genetic framework (see Baruah et al. 2019a). In fact, a recent study, on comparing the strength of abundance-based and trait-based EWS, has implied the preferential use of trait-based EWS over abundance-based EWS. This particular study suggested that under certain ecological circumstances, such as high trait plasticity and/or high reproductive rate, trait-based EWS outperformed abundance-based EWS in predicting population declines (Baruah et al., 2019b). Parallel to their simulation study, we showed with experimental data from microcosms, that despite shorter time series lengths and/or low sampling resolutions, body-size-based signals outperform abundance-based EWS. Whether a trait, such as body size, could be included among the suite of EWS would depend not only on the type of the trait but also on whether external environmental forcing affected the trait. If external environmental forcing did not affect body size it could be expected that body size based EWS would fail in forecasting potential population declines. We thus expect traits that were correlated to fitness of an organism to be potential candidates to be included within the suite of trait-based EWS.

That being said, body-size-based signals are clearly potential candidates to be included alongside generic EWS of population collapse. Recent study on this aspect has highlighted the environmental, ecological, and evolutionary circumstances under which it is possible for phenotypic traits to shift before a potential population decline and thus act as a warning signal (Baruah et al. 2019a). The strength of shifts in phenotypic trait such as body size, was dependent on how fast the environment changes, how plastic the trait was to changes in the external environment, and how high genetic variation was in the trait. In fact, strength of trait-based EWS was directly dependent on the above ecological and

evolutionary factors. For instance, it was suggested that, high levels of plasticity in the trait led to stronger trait-based EWS (Baruah et al. 2019b).

In our modeling scenarios, we chose a specific set of parameters to evaluate the performance of EWS in the face of myriad sampling lengths and resolutions. The choice of such a specific set of parameters that we used in our simulations were motivated through an iterative process that returned time series spanning a large range of forcing values while maintaining time-series lengths. Changes in the parameter values of strength in forcing levels or growth rate did not significantly alter our simulation results (see Appendix S1: Fig. S4 and S5): longer time series generally led to stronger forecasts of population collapse, while low resolution led to poor forecasts of population collapse with EWS.

Our findings on the effect of sampling length on the forecasting of population collapse by EWS suggest that the length of sampling required to calculate confident forecasts by abundance-based EWS are very long and likely impractical from a conservation and monitoring standpoint. On the other hand, trait-based EWS can give accurate and reliable forecasts with much less sampling data compared to their abundance-based counterparts.

CONCLUSION

Our results stemming from simulations and a laboratory microcosm study make a case for the use of trait-based EWS over classical abundance-based signals based on their increased reliability and strength when faced with varying lengths and resolutions of sampling time series. We attempted here to evaluate these EWS with data that might more realistically resemble data gathered from field monitoring programs. However, true field data arising from monitoring programs are likely to be noisier than the data we have presented and analyzed here. Nonetheless, our results suggest that abundance-based EWS perform poorly across resolutions and when the length of abundance time series with regards to the process rate of the system is decreased. We found that including trait dynamics alongside abundance-based EWS to generate trait-based EWS leads to more reliable and confident forecasts of population collapse. We further found in our simulations that a length of five generations is a minimum for deriving confident forecasts with abundance-based EWS. If trait-based EWS are used, this length requirement and the effect of resolution is much more relaxed. With these results in mind, we recommend considerations be made for the length and resolution of sampling time series required to accurately forecast populations in the design of monitoring programs. Further, we recommend the additional monitoring of phenotypic traits in populations, which have been shown to vary with increasing levels of environmental forcing such that trait-based EWS that have more forecasting power and reliability can be derived.

ACKNOWLEDGMENTS

The authors declare no conflict of interests. A. Arkilanian acknowledges support and funding from the University of Zurich BUSS program. The research was funded by ERC grant #337785 and Swiss National Science Foundation grant #31003A-182286 to A. Ozgul and Forschungskredit Nr. FK-18-082 to G. Baruah. Author contributions: C. F. Clements, G. Baruah, and A. Ozgul devised the study. A. Arkilanian and G. Baruah did the modeling and analyzed the data. A. Arkilanian and G. Baruah wrote the first draft. All the authors contributed to subsequent versions of the manuscript.

LITERATURE CITED

- Baruah, G., C. F. Clements, F. Guillaume, and A. Ozgul. 2019a. When do shifts in trait dynamics precede population declines? *American Naturalist* 193:633–644.
- Baruah, G., C. F. Clements, and A. Ozgul. 2019b. Eco-evolutionary processes underlying early warning signals of population declines. *Journal of Animal Ecology* 89:436–448.
- Beers, C. D. 1926. The life-cycle in the ciliate *Didinium nasutum* with reference to encystment. *Journal of Morphology* 42:1–21.
- Biggs, R., S. R. Carpenter, and W. A. Brock. 2009. Turning back from the brink: Detecting an impending regime shift in time to avert it. *Proceedings of the National Academy of Sciences USA* 106:826–831.
- Boerlijst, M. C., T. Oudman, and A. M. de Roos. 2013. Catastrophic collapse can occur without early warning: examples of silent catastrophes in structured ecological models. *PLoS ONE* 8:e62033.
- Boettiger, C., and A. Hastings. 2013. No early warning signals for stochastic transitions: insights from large deviation theory. *Proceedings of the Royal Society B* 280:20131372.
- Boettiger, C., N. Ross, and A. Hastings. 2013. Early warning signals: The charted and uncharted territories. *Theoretical Ecology* 6:255–264.
- Brown, J. H., J. F. Gillooly, A. P. Allen, V. M. Savage, and G. B. West. 2004. Toward a metabolic theory of ecology. *Ecology* 85:1771–1789.
- Burthe, S. J., et al. 2016. Do early warning indicators consistently predict nonlinear change in long-term ecological data? *Journal of Applied Ecology* 53:666–676.
- Carpenter, S. R., et al. 2011. Early warnings of regime shifts: a whole-ecosystem experiment. *Science* 332:1079–1082.
- Cheung, W. W. L., J. L. Sarmiento, J. Dunne, T. L. Frölicher, V. W. Y. Lam, M. L. D. Palomares, R. Watson, and D. Pauly. 2013. Shrinking of fishes exacerbates impacts of global ocean changes on marine ecosystems. *Nature Climate Change* 3:254–258.
- Clements, C. F., J. L. Blanchard, K. L. Nash, M. A. Hindell, and A. Ozgul. 2017. Body size shifts and early warning signals precede the historic collapse of whale stocks. *Nature Ecology & Evolution* 1:0188.
- Clements, C. F., J. M. Drake, J. I. Griffiths, and A. Ozgul. 2015. Factors influencing the detectability of early warning signals of population collapse. *American Naturalist* 186:50–58.
- Clements, C. F., and A. Ozgul. 2016a. Including trait-based early warning signals helps predict population collapse. *Nature Communications* 7:10984.
- Clements, C. F., and A. Ozgul. 2016b. Rate of forcing and the forecastability of critical transitions. *Ecology and Evolution* 6:7787–7793.
- Clements, C. F., and A. Ozgul. 2018. Indicators of transitions in biological systems. *Ecology Letters* 21:905–919.

- Collette, B. B., et al. 2011. High value and long life—double jeopardy for tunas and billfishes. *Science* 333:291–292.
- Costanza, R., et al. 1997. The value of the world's ecosystem services and natural capital. *Nature* 387:253–260.
- Dai, L., D. Vorselen, K. S. Korolev, and J. Gore. 2012. Generic Indicators for loss of resilience before a tipping point leading to population collapse. *Science* 336:1175–1177.
- Dakos, V., et al. 2012a. Methods for detecting early warnings of critical transitions in time series illustrated using simulated ecological data. *PLoS ONE* 7:e41010.
- Dakos, V., E. H. van Nes, P. D'Odorico, and M. Scheffer. 2012b. Robustness of variance and autocorrelation as indicators of critical slowing down. *Ecology* 93:264–271.
- Dakos, V., M. Scheffer, E. H. van Nes, V. Brovkin, V. Petoukhov, and H. Held. 2008. Slowing down as an early warning signal for abrupt climate change. *Proceedings of the National Academy of Sciences USA* 105:14308–14312.
- Drake, J. M., and B. D. Griffen. 2010. Early warning signals of extinction in deteriorating environments. *Nature* 467:456–459.
- Dutta, P. S., Y. Sharma, and K. C. Abbott. 2018. Robustness of early warning signals for catastrophic and non-catastrophic transitions. *Oikos* 127:1251–1263.
- Folke, C., S. Carpenter, B. Walker, M. Scheffer, T. Elmqvist, L. Gunderson, and C. S. Holling. 2004. Regime shifts, resilience, and biodiversity in ecosystem management. *Annual Review of Ecology, Evolution, and Systematics* 35:557–581.
- Hastings, A., and D. B. Wysham. 2010. Regime shifts in ecological systems can occur with no warning. *Ecology Letters* 13:464–472.
- Hilborn, R., T. A. Branch, B. Ernst, A. Magnusson, C. V. Minte-Vera, M. D. Scheuerell, and J. L. Valero. 2003. State of the world's fisheries. *Annual Review of Environment and Resources* 28:359–399.
- Hughes, T. P., et al. 2017. Coral reefs in the Anthropocene. *Nature* 546:82–90.
- Ozgul, A., S. Tuljapurkar, T. G. Benton, J. M. Pemberton, T. H. Clutton-Brock, and T. Coulson. 2009. The dynamics of phenotypic change and the shrinking sheep of St. Kilda. *Science* 325:464–467.
- Pace, M. L., R. D. Batt, C. D. Buelo, S. R. Carpenter, J. J. Cole, J. T. Kurtzweil, and G. M. Wilkinson. 2017. Reversal of a cyanobacterial bloom in response to early warnings. *Proceedings of the National Academy of Sciences USA* 114:352–357.
- Pigeon, G., T. H. G. Ezard, M. Festa-Bianchet, D. W. Coltman, and F. Pelletier. 2017. Fluctuating effects of genetic and plastic changes in body mass on population dynamics in a large herbivore. *Ecology* 98:2456–2467.
- R Core Team. 2018. R: A language and environment for statistical computing. R Foundation for Statistical Computing, Austria, Vienna. www.R-project.org
- Scheffer, M., J. Bascompte, W. A. Brock, V. Brovkin, S. R. Carpenter, V. Dakos, H. Held, E. H. van Nes, M. Rietkerk, and G. Sugihara. 2009. Early-warning signals for critical transitions. *Nature* 461:53–59.
- Smith, V. H., and D. W. Schindler. 2009. Eutrophication science: where do we go from here? *Trends in Ecology & Evolution* 24:201–207.
- Spanbauer, T. L., C. R. Allen, D. G. Angeler, T. Eason, S. C. Fritz, A. S. Garmestani, K. L. Nash, J. R. Stone, C. A. Stow, and S. M. Sundstrom. 2016. Body size distributions signal a regime shift in a lake ecosystem. *Proceedings of the Royal Society B* 283:20160249.
- van Benthem, K. J., H. Froy, T. Coulson, L. L. Getz, M. K. Oli, and A. Ozgul. 2017. Trait-demography relationships underlying small mammal population fluctuations. *Journal of Animal Ecology* 86:348–358.
- Van de Walle, J. V., G. Pigeon, A. Zedrosser, J. E. Swenson, and F. Pelletier. 2018. Hunting regulation favors slow life histories in a large carnivore. *Nature Communications* 9:1100.
- Wilkinson, G. M., S. R. Carpenter, J. J. Cole, M. L. Pace, R. D. Batt, C. D. Buelo, and J. T. Kurtzweil. 2017. Early warning signals precede cyanobacterial blooms in multiple whole-lake experiments. *Ecological Monographs* 88:188–203.
- Wissel, C. 1984. A universal law of the characteristic return time near thresholds. *Oecologia* 65:101–107.

SUPPORTING INFORMATION

Additional supporting information may be found in the online version of this article at <http://onlinelibrary.wiley.com/doi/10.1002/ecy.3040/supinfo>

DATA AVAILABILITY STATEMENT

Data are available on Zenodo: <https://doi.org/10.5281/zenodo.3688736>