

Barrow Neurological Institute at St. Joseph's Hospital and Medical Center

Barrow - St. Joseph's Scholarly Commons

Neurosurgery

2017

Tissue Plasminogen Activator Mediates Deleterious Complement Cascade Activation in Stroke

Xue Jun Zhao

Timothy M. Larkin

Molly A. Lauver

Saif Ahmad

Andrew F. Ducruet

Barrow Neurological Institute, andrew.ducruet@barrowbrainandspine.com

Follow this and additional works at: <https://scholar.barrowneuro.org/neurosurgery>

Recommended Citation

Zhao, Xue Jun; Larkin, Timothy M.; Lauver, Molly A.; Ahmad, Saif; and Ducruet, Andrew F., "Tissue Plasminogen Activator Mediates Deleterious Complement Cascade Activation in Stroke" (2017). *Neurosurgery*. 474.

<https://scholar.barrowneuro.org/neurosurgery/474>

This Article is brought to you for free and open access by Barrow - St. Joseph's Scholarly Commons. It has been accepted for inclusion in Neurosurgery by an authorized administrator of Barrow - St. Joseph's Scholarly Commons. For more information, please contact molly.harrington@dignityhealth.org.

RESEARCH ARTICLE

Tissue plasminogen activator mediates deleterious complement cascade activation in stroke

Xue-Jun Zhao¹, Timothy M. Larkin¹, Molly A. Lauver¹, Saif Ahmad², Andrew F. Ducruet^{1†*}

1 Department of Neurological Surgery, University of Pittsburgh, Pittsburgh, PA, United States of America, **2** Department of Neurosurgery, Barrow Neurological Institute, Phoenix, AZ, United States of America

† Current address: Department of Neurosurgery, Barrow Neurological Institute, Phoenix, Arizona, United States of America

* andrew.ducruet@barrowbrainandspine.com



OPEN ACCESS

Citation: Zhao X-J, Larkin TM, Lauver MA, Ahmad S, Ducruet AF (2017) Tissue plasminogen activator mediates deleterious complement cascade activation in stroke. PLoS ONE 12(7): e0180822. <https://doi.org/10.1371/journal.pone.0180822>

Editor: Muzamil Ahmad, Indian Institute of Integrative Medicine CSIR, INDIA

Received: March 24, 2017

Accepted: June 21, 2017

Published: July 10, 2017

Copyright: © 2017 Zhao et al. This is an open access article distributed under the terms of the [Creative Commons Attribution License](https://creativecommons.org/licenses/by/4.0/), which permits unrestricted use, distribution, and reproduction in any medium, provided the original author and source are credited.

Data Availability Statement: All relevant data are within the paper itself.

Funding: This work was supported by a Neurosurgeon Research Career Development Program Award (K12) from the NINDS and a UPP/UPMC Academic Foundation Award (A.F.D.) as well as a Walter L. Copeland Award from the Pittsburgh Foundation (X-J.Z.) The funders had no role in study design, data collection and analysis, decision to publish, or preparation of the manuscript.

Competing interests: The authors have declared that no competing interests exist.

Abstract

The use of intravenous tissue plasminogen activator (tPA) in the treatment of ischemic stroke is limited by its propensity to exacerbate brain edema and hemorrhage. The mechanisms underlying these deleterious effects of tPA remain incompletely understood. The purpose of this study was to delineate a pathway of tPA-mediated complement cascade activation in stroke and to determine whether complement inhibition ameliorates the adverse effects of post-ischemic tPA administration. We found that tPA promotes C3 cleavage both *in vitro* and in ischemic brain through a plasmin-mediated extrinsic pathway. Using cell culture models, we then showed that the C3a-receptor is strongly expressed on ischemic endothelium and that exogenous C3a dramatically enhances endothelial cell permeability. Next, we assessed the effect of tPA administration on brain edema and hemorrhage in a transient model of focal cerebral ischemia in C57BL/6 mice. We found that intravenous tPA exacerbates brain edema and hemorrhage in stroke, and that these effects are abrogated by a small-molecule antagonist of the C3a receptor. These findings establish for the first time that intravenous tPA dramatically upregulates complement cascade activation in ischemic brain and that pharmacologic complement inhibition protects against the adverse effects of tPA-mediated thrombolysis in stroke.

Introduction

The occlusion of a cerebral artery incites a series of deleterious biochemical cascades which disrupt the blood-brain-barrier and engender downstream neuronal, glial, and vascular injury. Among the numerous pathways which contribute to this ischemic brain injury, the complement cascade plays a critical role at the intersection of the immune and inflammatory axes [11]. The cleavage product of the central component of the complement cascade, the C3a anaphylatoxin, promotes endothelial activation, permeability, and inflammatory cell infiltration in stroke [22]. Furthermore, genetic and pharmacologic complement inhibition confers robust

and sustained neuroprotection [3, 4]. Complement therefore represents a promising therapeutic target for the treatment of stroke.

In stroke, the central complement component C3 is predominantly cleaved through the mannose binding lectin (MBL) pathway [5, 6]. Beyond the three canonical proximal complement activation pathways, extra-convertase (extrinsic) cleavage of C3 and C5 has also been described [7]. Both thrombin and plasmin, proteases present in the ischemic brain milieu, have been shown to cleave C3 *in vitro* [8]. However, the extent to which such an extrinsic complement activation pathway plays a role in stroke has not been explored. This is particularly relevant because intravenous tissue plasminogen activator (tPA), which cleaves fibrin by generating plasmin from its precursor plasminogen, remains the only approved pharmacologic treatment for stroke patients. Although timely thrombolysis may arrest infarct progression and improve post-stroke outcome, universal use of intravenous thrombolysis is limited by the propensity of tPA to cause vascular injury and brain hemorrhage. The potential neurotoxicity of tPA has been well documented by both *in vitro* as well as *in vivo* studies. For instance, Flavin et al. have reported that exogenous tPA exogenous induced apoptosis in cultured neurons. In another report, it was suggested that tPA stimulates apoptosis in ischemic human brain endothelium and in mouse cortical neurons [9]. Additionally, it has been reported that tPA increased neuronal damage following cerebral ischemia in both wild-type and tPA KO mice [10]. tPA-induced neurotoxicity is not restricted to ischemia models, as it has also been demonstrated that tPA deficient mice have shown reduced cortical lesion and attenuated brain edema following traumatic brain injury (TBI) when compared with their wild-type littermates [11]. In addition to the known diverse mechanisms implicated in the adverse effects of tPA on ischemic brain [9, 10, 12], tPA also likely exacerbates deleterious complement activation. Complement inhibition therefore represents an ideal strategy to limit the secondary injury associated with tPA.

In the present study, we first established the mechanism by which tPA promotes C3 cleavage and investigated the effect of C3a on endothelial cell permeability *in vitro*. We then evaluated whether this extrinsic complement activation pathway is functionally-relevant in stroke by demonstrating that tPA promotes brain edema and hemorrhage in our stroke model and that complement inhibition protects against these adverse effects of tPA in stroke. This study provides the first evidence for a critical inter-connection between the complement and coagulation pathways in stroke which may be pharmacologically modulated to minimize the deleterious effects of intravenous tPA.

Materials and methods

Ethics statement

Experiments were performed in accordance with the guidelines for the care and use of laboratory animals and approved by the Institutional Animal Care and Use Committee of the University of Pittsburgh. Surgical procedures were performed under isoflurane anesthesia, and all efforts were made to minimize suffering.

Animals and reagents

Male C57BL/6 mice and MBL-null (B6.120S4-*Mbl1*^{tm1Kata}*Mbl2*^{tm1Kata}/J) mice (25–28g; Jackson Laboratories, Bar Harbor, Maine) were randomly allocated between treatment groups. Animals were allowed free access to food and water in a temperature-controlled environment (25°C) before and after surgery. Pregnant (day 15) Swiss Webster mice (Jackson Laboratories) were the source of primary neuronal cells.

C3a receptor antagonist SB290157 (C3aRA) and human C3 were obtained from EMD Millipore. Human Lys-plasmin and Glu-plasminogen were purchased from Innovative Research, and tissue plasminogen activator (tPA; Activase) was from Henry Schein. Human/mouse plasma and FITC-dextran (40kDa) were produced by Sigma-Aldrich.

Middle cerebral artery occlusion

Focal cerebral ischemia was induced in mice by transient middle cerebral artery occlusion (MCAO) as previously described [13]. Anesthesia was induced with isoflurane in 70% N₂O and 30% O₂ titrated to 1.5% during surgery. Rectal temperature was maintained between 37.0–37.5 °C with a temperature-controlled heating pad. A silicon-coated, 6–0 nylon suture was introduced into the ECA and advanced up the ICA to occlude the middle cerebral artery (MCA). Following 60 minutes, the filament was removed to restore perfusion. Cerebral blood flow was measured using laser Doppler flowmetry as previously described [14]. tPA (10mg/kg) or volume-equivalent sterile water was administered intravenously (i.v.) at the time of reperfusion, and C3aRA (1mg/kg in 1.16% DMSO/PBS) or vehicle (1.16% DMSO/PBS) was injected intraperitoneally 45 minutes prior to ischemia. All injections were allocated randomly and performed in a blinded fashion. Sample size was based on our historic data and variance in prior studies using this model [15]. This analysis found that that 12 animals per arm would be required to detect a 20% difference in neurological score between groups with $\alpha < 0.05$, and $\beta = 80\%$. Given an expected mortality rate of approximately 20%, 15 animals per arm were used.

tPA-mediated C3 cleavage

Human C3a concentration was quantified using commercially-available ELISA (BD Biosciences). A mouse C3a ELISA was developed by our laboratory using commercial antibodies (BD Biosciences). Briefly, rat anti-mouse C3a capture antibody was coated in a 96-well plate overnight at 4 °C. Following incubation, the plate was washed and blocked with 5% skim milk. The samples were added to the well and C3a was detected by biotin rat anti-mouse C3a antibody. The plate was read at 450nm (Synergy H1, BioTek) after TMB substrate and stop solution were added.

C3 cleavage experiments were performed by incubating native human C3 (0.02 μ g/ml) in PBS in the absence or presence of plasmin (0.1–10 μ g/ml) at 37 °C for 90 minutes. C3a generation was assessed by ELISA. To assess the mechanism by which tPA cleaves C3 in plasma *ex vivo*, we incubated tPA (100 μ g/ml) with human plasma (1:1000, Sigma-Aldrich) with and without α -2 anti-plasmin (Abcam; 100nM) or recombinant CD35 (R&D systems; 20nM) for 90 minutes at 37 °C. C3a concentration was determined using ELISA.

For assessment of C3a generation *in vivo* in plasma, tPA (10 mg/kg) was injected (i.v.) into C57BL/6 mice. Venous blood was collected into citrate-coated tubes 10 minutes after tPA administration. Plasma C3a levels were measured by ELISA. To quantify C3a generation in ischemic brain, tPA (10 mg/kg) was injected (i.v.) at reperfusion. After 24 hours, mice were anesthetized and brains were perfused with PBS, harvested and homogenized. C3a generation was quantified using ELISA.

Cell culture and oxygen-glucose deprivation (OGD)

Culture of primary cortical neurons (PCNs) was performed as previously described [16]. Briefly, cerebral cortex of Swiss Webster mouse embryos (E15) were freed from meninges and separated from olfactory bulb and hippocampus. Trypsinized cells were suspended in neurobasal medium with 2% (vol/vol) B27 supplement, 0.5mM glutamine, 100 units/mL penicillin and streptomycin (GIBCO), and seeded at a 3x10⁵/500 μ l in 24-well plates. Experiments were

performed on day 7 of culture. For oxygen glucose deprivation (OGD), the culture medium was replaced by glucose-free Earle's balanced salt solution (EBSS), and cells were placed in a temperature-controlled anaerobic chamber containing a gas mixture composed of 5% CO₂, 10% H₂ and 85% N₂. Control cells were incubated in EBSS with glucose in a normoxic incubator for the same period. After 3 hours, OGD was terminated by a return to normal culture conditions for 24 hours.

The immortalized mouse brain endothelial cell line (bEnd.3) was obtained from ATCC (Manassas, VA) and cultured in DMEM medium with 10% FBS, 2mM glutamine and 1x non-essential amino acid. The cells were incubated in a CO₂ incubator with 5% CO₂ at 37°C. To model *in vitro* ischemia, we cultured cells in OGD medium for 1 hour in an anaerobic chamber. Following OGD, the cells were returned to a normoxic incubator under 5% CO₂/95% air for 1, 2 or 24 hours with complete medium. Normoxic bEnd.3 cells served as controls.

C3aR RNA and protein expression studies

For real time polymerase chain reaction, total RNA was isolated from PCN, bEnd.3 cells, and mouse brain tissue by TRIzol reagent. RNA was transcribed to cDNA using iScript Reverse Transcription Supermix (Bio-Rad), and real-time PCR was performed according to the SsoAdvanced Universal Probes Supermix reagents kit protocol supplied by the manufacturer (Bio-Rad). Mouse C3ar1 primers and probe were obtained from Applied Biosystems.

For Western blot (WB), total protein from bEND.3 cells and mouse brain homogenates were run on NuPAGE 4–12% Bis-Tris gel (Invitrogen) and transferred to nitrocellulose membranes (Bio-Rad). The membrane was probed with anti-C3aR antibody (Santa Cruz Biotechnology, 1:200). Following incubation with the secondary antibody from Li-Cor Biosciences, fluorescent signals were detected by an Odyssey scanner (Li-Cor).

C3aR immunocytochemistry

bEnd.3 cells (3x10⁵/well) were plated in 24-well glass plate (In-Vitro Scientific) and placed in a CO₂ incubator overnight then fixed using 4% PFA for 20 minutes at room temperature. Endothelial cells were subjected to OGD as described above and fixed immediately. Samples were blocked with 10% horse serum in TBS with 0.5% Triton X-100 for 1 hour. After washing the cells with TBS, primary anti-mouse C3aR antibody (Santa Cruz Biotechnology, 1:50) diluted in 2% horse serum was added and incubated overnight at 4°C. Next, cells were incubated for 2h with fluorescein anti-mouse secondary antibody (Vector, 1:200), mounted in mounting media with DAPI (Vector), and analyzed using fluorescence microscopy (IX81, Olympus).

Cell-death assay

Cell death was assessed by LDH assay according to the manufacturer's instructions (Roche Products). Serial concentrations of murine C3a (R&D Systems, 0-100nM) were incubated with PCN and bEnd.3 cells subjected to OGD followed by 24h re-oxygenation. The reaction mixture (100 µl) was added to conditioned media (100µl) removed from culture wells. Sample absorbance was measured (Synergy H1, BioTek) at 490nm after 15 minutes of room temperature incubation. The same volume of blank medium was used as background control.

Endothelial cell permeability assay

To assess the effect of C3a on endothelial cell permeability following OGD, bEnd.3 cells were grown on 0.4µm pore membrane cell culture inserts (Nunc) on 24-well plates. Cells (2x10⁵/insert/mL) were cultured in DMEM medium with 10% FBS on upper side of the insert. After

the cells reached confluence, 1 mg/ml FITC-dextran (40kDa, Sigma-Aldrich) was added to the upper chamber containing 100nM of C3a in 100 μ l of EBSS. EBSS (300 μ l) was added to the lower chamber to prevent the formation of an oncotic pressure gradient. The cells in EBSS were exposed to OGD for 1 hour, followed by re-oxygenation for 1h in normal CO₂ incubator. Medium was then collected from the lower chamber and the amount of FITC-dextran was measured using a BioTek fluorimeter at excitation and emission wavelengths of 492nm and 520nm.

Infarct volume and neurological assessment

Following 24 hours of reperfusion, animals were anesthetized and decapitated. Brains were removed and chilled on ice. Coronal sections (1-mm-thick) were cut using a mouse brain matrix (Roboz Surgical Instrument Co), and stained with 2% TTC (Sigma Co, St Louis, Missouri) at 37°C for 20 minutes. Infarct volume was calculated by integrating the infarct area over 6 coronal sections using ImageJ. To control for edema, infarct volumes were expressed as a percentage of the contralateral hemisphere [17]. Absolute edema was calculated as the difference in area between ischemic and non-ischemic hemispheres calculated over all coronal sections [18]. Relative edema was reported as the quotient of absolute edema over absolute infarct volume.

Neurological deficits were assessed as previously described by a blinded observer, using the following scoring system [19]: 0, no observable deficits; 1, forelimb flexion; 2, forelimb flexion and reduced resistance to lateral push; 3, forelimb flexion, reduced resistance to lateral push, and unilateral circling; 4, forelimb flexion and ambulation inability/difficulty.

Hemoglobin assay

A spectrophotometric hemoglobin assay was employed to quantify the extent of intracerebral hemorrhage[20]. In brief, mouse brains were homogenized, sonicated, and centrifuged, and methemoglobin in the supernatants was converted (using Drabkin's reagent) to cyanomethemoglobin. Concentration was assessed by measuring optical density at 540nm (Synergy H1, BioTek). Bovine erythrocyte hemoglobin (Sigma) was used as a standard.

Statistical analyses

Quantitative data are presented as mean \pm SEM. Difference among multiple groups was analyzed by one-way ANOVA followed by Tukey's multiple comparison test. Comparison between two groups was based on Student's *t* test. A value of $P < 0.05$ was considered significant.

Results

Plasmin cleaves C3 in a dose-dependent manner

To demonstrate the extent to which plasmin cleaves C3, serial concentrations of plasmin were incubated with human C3. C3a was generated in a dose-dependent manner (Fig 1A), with no significant C3a detected in the presence of plasmin or C3 alone.

tPA promotes C3 cleavage in plasma through a plasmin-mediated mechanism

We then set out to demonstrate that tPA mediates plasmin-dependent cleavage of C3, independent of the C3 convertase. tPA (100 μ g/mL) was incubated with human plasma in the presence or absence of α 2-antiplasmin (100nM) or recombinant CD35 (20nM), an inhibitor of

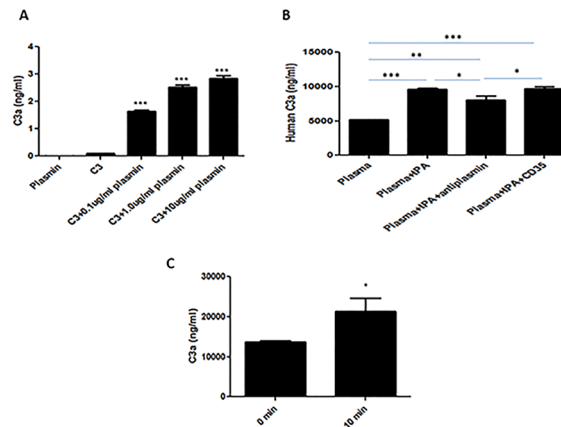


Fig 1. tPA promotes C3 cleavage through a plasmin-mediated extrinsic pathway. (A) C3 protein was incubated with plasmin. Plasmin-mediated C3a production increased in a dose-dependent manner. *** $P < 0.001$ vs. control ($n = 3$). **(B)** tPA promotes C3 cleavage in human plasma, and this process is suppressed by $\alpha 2$ -antiplasmin but not by CD35. * $P < 0.05$, ** $P < 0.01$, *** $P < 0.001$ vs. controls ($n = 3$). **(C)** Following intravenous tPA infusion in C57BL/6 mice in the absence of ischemia, a significant increase in plasma C3a levels was observed. * $P < 0.05$ ($n = 3$).

<https://doi.org/10.1371/journal.pone.0180822.g001>

complement activation. We found that the addition of tPA to plasma generates C3a (Fig 1B), and that this process is suppressed by $\alpha 2$ -antiplasmin but *not* by CD35. As CD35 (Complement receptor-1) inhibits complement activation by binding C3b to prevent the assembly of the C3-convertase [21], these data suggest that tPA promotes C3 cleavage through a plasmin-mediated pathway, independent of the C3-convertase.

We next evaluated whether tPA mediates C3 cleavage in murine plasma by injecting non-ischemic C57BL/6 mice with intravenous tPA and sampling venous blood after 10 minutes. We noted a significant increase in plasma C3a concentration following tPA injection (Fig 1C). Therefore, tPA promotes plasma C3 cleavage both *ex vivo* and *in vivo*, and the co-factor necessary for plasminogen conversion is present in plasma.

C3aR is strongly expressed in ischemic brain tissue and endothelial cells

We next set out to determine the localization of C3aR expression. To investigate whether C3aR is expressed by ischemic neurons, we performed real-time PCR and WB on PCN cultures subjected to OGD as well as normoxic controls. We found that C3aR mRNA and protein were minimally expressed in PCN cultures in both cases. Next, WB performed on ischemic mouse brain lysates demonstrates C3aR protein upregulation in the ischemic hemisphere (Fig 2A).

We next performed WB for C3aR on bEnd.3 cells subjected to OGD. We found strong C3aR expression on ischemic endothelial cells relative to normoxic controls (Fig 2B). Subsequent immunocytochemistry also suggested enhanced C3aR protein expression on bEnd.3 cells subjected to OGD (Fig 2C and 2D).

C3a does not directly induce neuronal or endothelial cell death but promotes endothelial cell permeability

To determine whether C3a induces neuronal and endothelial cell death, mouse C3a protein was incubated with PCN and bEnd.3 cells subjected to OGD as well as non-hypoxic controls. As expected, we found that OGD alone significantly increased LDH release by both cell-types (Fig 3A and 3B). However, administration of exogenous C3a had no effect on LDH production

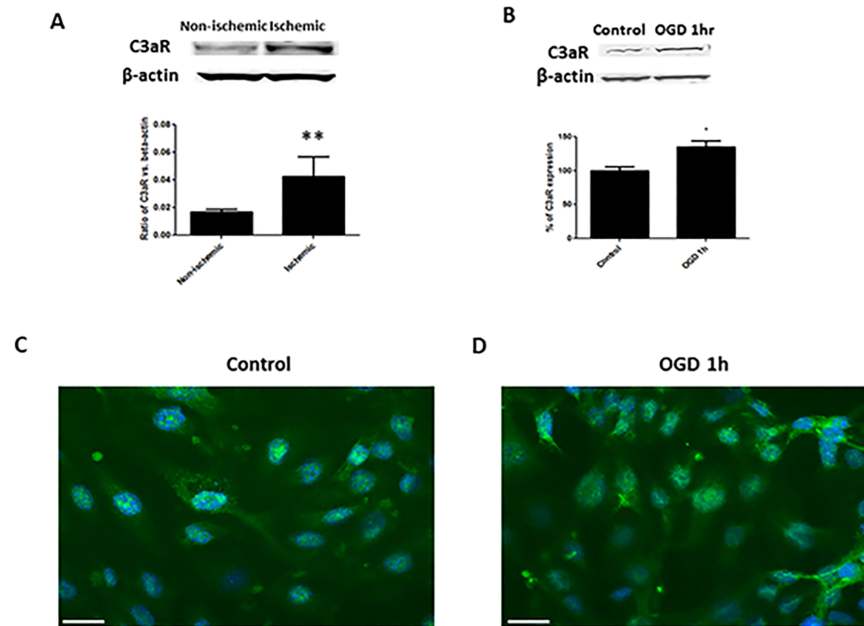


Fig 2. C3aR is strongly expressed in ischemic brain tissue and endothelial cells subjected to OGD. (A) WB for C3aR on brain homogenates obtained from mice subjected to MCAO. C3aR protein is strongly upregulated in the ischemic hemisphere. $**P < 0.01$ ($n = 5$). (B) Western blot for C3aR performed on lysates of bEnd.3 cells subjected to OGD demonstrates significantly increased C3aR protein expression relative to non-ischemic controls. $*P < 0.05$ ($n = 3$). (C) Immunocytochemical staining (40X) demonstrates baseline C3aR expression on non-ischemic bEnd.3 cells. (D) Following OGD, enhanced C3aR expression (green) is noted. Scale bars = 20 μ m.

<https://doi.org/10.1371/journal.pone.0180822.g002>

by either neurons or endothelial cells. These results suggest that C3a does not directly influence cell death, and that the adverse effects of C3a occur through a different mechanism.

We then assessed the effect of C3a on cell permeability using a monolayer of endothelial (bEnd.3) cells subjected to OGD. In this model, both C3a and OGD increased permeability of this cell monolayer to FITC dextran compared to control (Fig 3C). Following OGD and reoxygenation, C3a administration exacerbated permeability even further (Fig 3D). Together with the increased expression of C3aR in endothelial cells subjected to OGD, these data suggest that the C3a-C3aR axis plays a crucial role in modulating endothelial permeability both at baseline and after OGD.

tPA promotes C3 cleavage in ischemic brain through a mechanism independent of MBL

To evaluate the extent to which intravenous tPA promotes C3 cleavage in stroke, brain tissue homogenates were obtained from mice 24 hours following MCAO. As expected, elevated concentrations of C3a was noted in the ischemic hemisphere, with significantly increased C3 cleavage observed following intravenous tPA administration (Fig 4A). In the brains of MBL-null mice, however, ischemia did not enhance C3 cleavage, suggesting that C3 cleavage in ischemic brain occurs through the MBL pathway. In these same MBL-null mice, tPA administration significantly increased C3a concentration in the ischemic hemisphere (Fig 4B). Taken together, these data suggest that tPA promotes direct complement cleavage in ischemic brain through a mechanism independent of the known pathway of ischemia-induced complement activation.

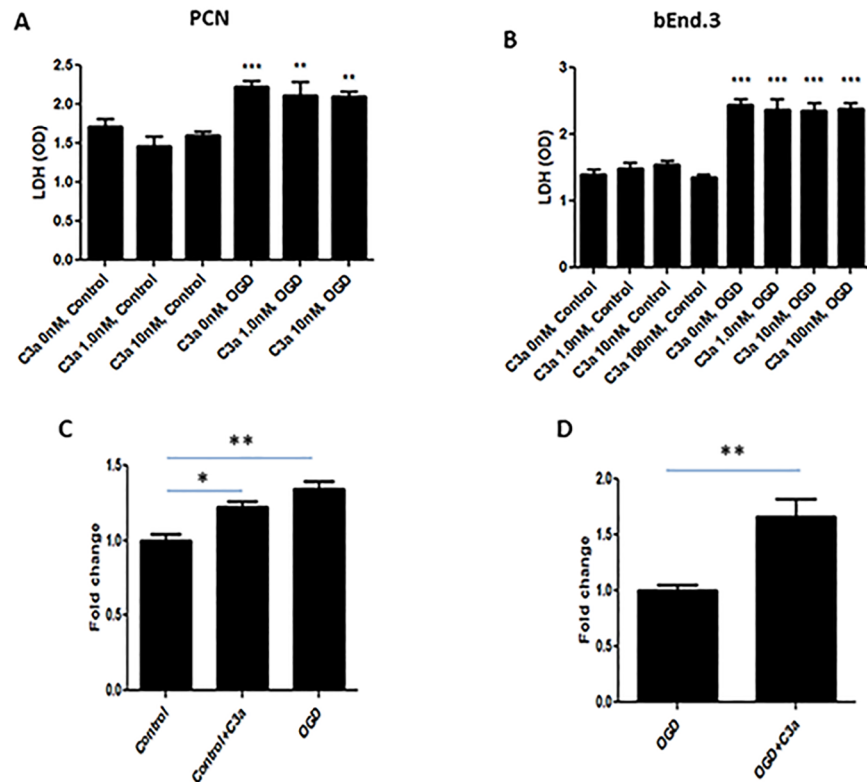


Fig 3. C3a does not directly cause neuronal or endothelial cell death but modulates endothelial cell permeability *in vitro*. Recombinant mouse C3a was incubated with PCN and bEnd.3 cells \pm OGD. OGD increases LDH release by PCN (A) and bEnd.3 cells (B). However, C3a did not affect LDH production by either cell type. $**P < 0.01$, $***P < 0.001$ vs. controls ($n = 4-6$). We next assessed the effect of C3a on permeability of a monolayer of bEnd.3 cells subjected to OGD. (C) In this model, C3a alone as well as OGD increased permeability compared to control non-ischemic cells. (D) C3a also increased monolayer permeability relative to OGD alone. $*P < 0.05$, $**P < 0.01$ vs. controls ($n = 4$).

<https://doi.org/10.1371/journal.pone.0180822.g003>

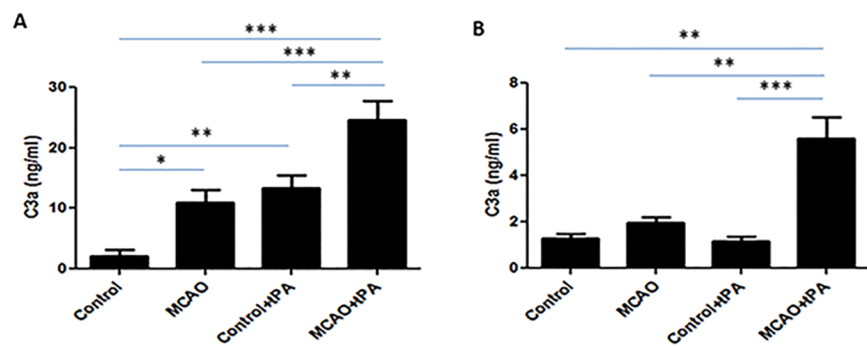


Fig 4. tPA promotes C3 cleavage in ischemic mouse brain through an MBL-independent pathway. Brain homogenates were obtained from mice subjected to MCAO who received i.v. tPA at reperfusion. (A) In wild-type mice, a significant increase in C3a concentration was observed in the ischemic hemisphere, with further increases in C3a after tPA administration. (B) MBL-null mice did not demonstrate significant C3 cleavage in the ischemic hemisphere; however, tPA does promote a dramatic increase in brain C3a in these mice. $*P < 0.05$, $**P < 0.01$, $***P < 0.001$ vs. controls ($n = 7$).

<https://doi.org/10.1371/journal.pone.0180822.g004>

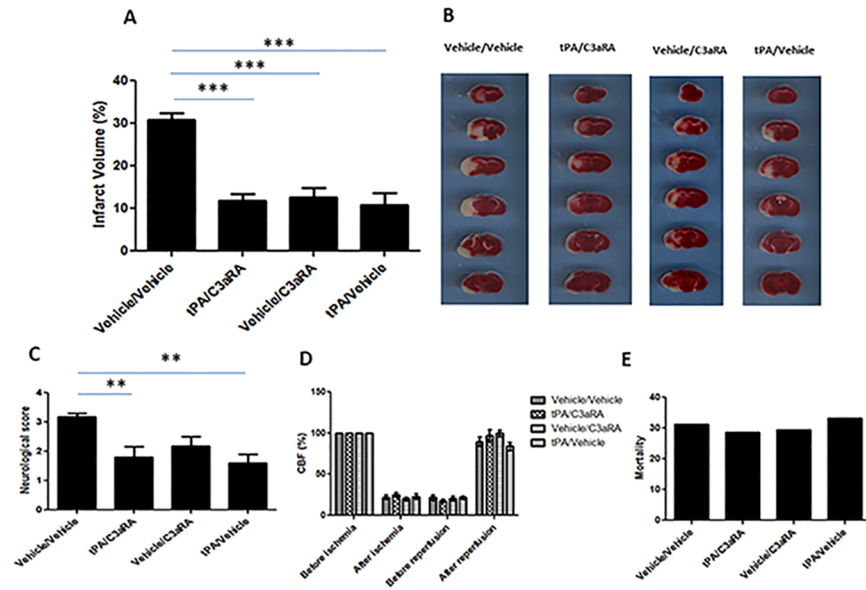


Fig 5. Both tPA and C3aRA confer robust neuroprotection following transient MCAO. (A) Following transient MCAO, C3aRA, tPA and the combination of C3aRA/tPA significantly reduced infarct volume relative to vehicle-treated controls. (B) Representative TTC-stained coronal sections of brains from mice in each cohort. (C) tPA alone or tPA/C3aRA improves neurological function relative to vehicle-treated controls. (D) No significant differences in cerebral blood flow were noted among treatment groups. (E) No significant differences in mortality were noted among treatment groups. **P<0.01, ***P<0.001 vs. controls (n = 10).

<https://doi.org/10.1371/journal.pone.0180822.g005>

Pharmacologic inhibition of the C3a-receptor ameliorates post-ischemic tPA-mediated brain edema and hemorrhage

We next sought to determine the functional effects of C3aR inhibition in mice subjected to MCAO and treated with tPA. We found that administration of C3aRA, tPA, and the two in combination significantly reduced infarct volume compared to vehicle-treated controls (P<0.001) (Fig 5A and 5B). Additionally, tPA alone or tPA administered in conjunction with C3aRA also enhanced neurological function (P<0.01) (Fig 5C). Importantly, there were no significant differences in cerebral blood flow (CBF) among the treatment groups at any time-point examined (Fig 5D), and mortality did not differ significantly between cohorts.

We then assessed whether C3aR inhibition would protect against tPA-mediated brain edema and hemorrhage in our model. We found that post-ischemic tPA administration increased relative brain edema in the ipsilateral hemisphere, and that this edema was suppressed by C3aR antagonism (P<0.001) (Fig 6A). Furthermore, tPA significantly increased brain hemorrhage, and C3aRA treatment greatly reduced the extent of hemorrhage (P<0.01) (Fig 6B). Taken together, these data suggest that pharmacologic inhibition of the C3aR effectively protects against these deleterious side-effects of intravenous tPA.

Discussion

The present study demonstrates that intravenous tPA triggers complement C3 cleavage in ischemic brain through an extrinsic pathway. Additionally, we show that tPA exacerbates cerebral edema and hemorrhage in our stroke model, analogous to findings in human stroke patients. Finally, we demonstrate that pharmacologic antagonism of the C3a receptor ameliorates the adverse effects of tPA and represents a promising potential therapeutic strategy for stroke (Fig 7).

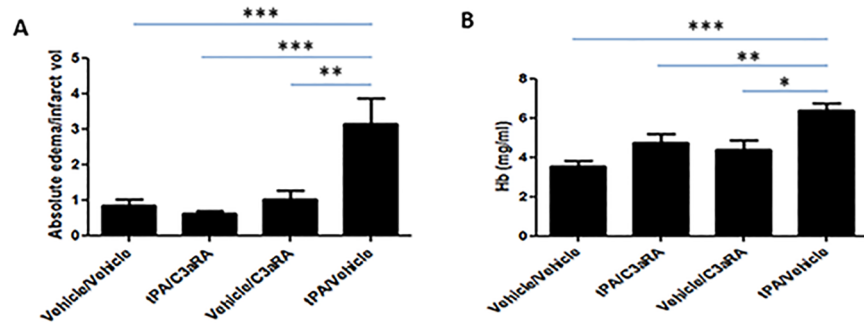


Fig 6. C3aRA ameliorates tPA-mediated brain edema and hemorrhage following MCAO. (A) tPA administration significantly increases relative cerebral edema, and this increase was ameliorated by C3aRA. (B) tPA significantly increased cerebral hemorrhage following MCAO, an effect that was suppressed by antagonism of the C3a receptor. *P<0.001, **P<0.01, ***P<0.001 vs. controls (n = 10).

<https://doi.org/10.1371/journal.pone.0180822.g006>

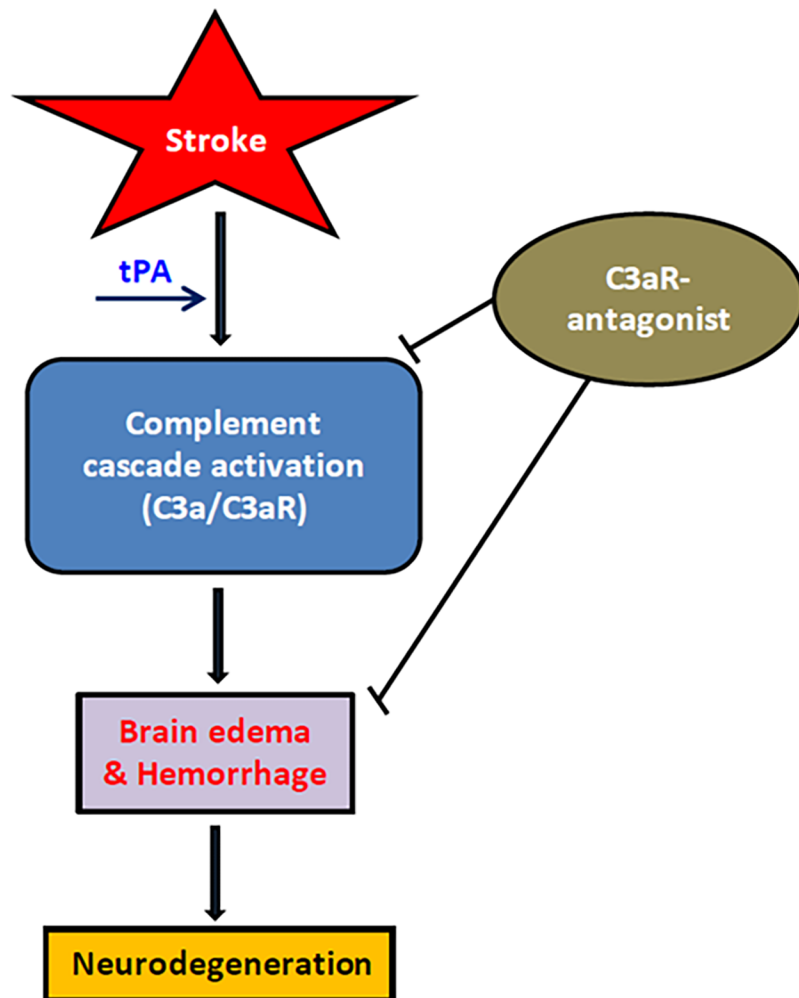


Fig 7. tPA-mediated complement cascade activation in stroke. Schematic depicting the interplay between cerebral ischemia and tPA, resulting in complement C3a generation, and subsequent brain injury.

<https://doi.org/10.1371/journal.pone.0180822.g007>

Although tPA remains the only approved pharmacologic treatment for stroke, its application is limited to patients who present within a limited time-window. This is due in part to the propensity of tPA to promote hemorrhage and brain edema, which occur more frequently when tPA administration is delayed [22, 23]. However, recent clinical trials of endovascular thrombectomy have shown that even delayed reperfusion may arrest stroke evolution and dramatically improve outcome in select patients, arguing that salvageable penumbral brain tissue often persists well beyond the accepted strict therapeutic window for i.v. tPA [24–27]. Therefore, strategies to mitigate the deleterious effects of tPA while preserving its beneficial thrombolytic effect might potentially allow for safe administration of this effective thrombolytic to a larger subset of stroke patients.

Several studies have probed the mechanisms underlying the adverse effects of tPA in stroke. First, a seminal study demonstrated that tPA-deficient mice exhibit smaller infarcts than wild-type controls [10], suggesting for the first time that tPA may actually promote ischemic brain injury. Several mechanisms including damage to the integrity of the BBB as well as direct neuronal toxicity have been implicated [10, 28]. One major theme of subsequent investigation focused on the ability of tPA to upregulate the expression of matrix metalloproteinases (MMPs), which degrade the structural proteins of the BBB, engendering edema and predisposing to hemorrhage [29]. In a parallel line of work, Yepes *et al.* showed that endogenous tPA activity in the perivascular tissue following cerebral ischemia induces opening of the BBB through a receptor-mediated mechanism [28]. This group also showed that tPA administered into the lateral ventricle causes BBB-breakdown through a PDGF- α receptor-mediated mechanism [30]. Although these studies delineate an important mechanism of tPA-mediated BBB dysfunction, they focus on the effects of endogenous tPA as well as the administration of exogenous tPA into the ventricle and ignore the critical interaction of tPA with the cerebral vasculature. The overall evidence suggests that the deleterious effects of tPA in stroke occur through pleiotropic mechanisms.

Complement has been well-established as a critical mediator of brain injury in stroke [1, 13]. In addition to the three canonical complement activation pathways, a number of extrinsic pathways have recently been described. The best-understood of these pathways involves thrombin, which cleaves C5 directly even in the absence of C3 [7]. Plasmin, another protease present in the ischemic brain milieu, has also been shown to cleave C3 and C5 *in vitro* [8]. Little attention has been focused on whether this particular complement activation pathway occurs *in vivo*. A single prior study demonstrated an increase in plasma complement activation following tPA administration in patients undergoing coronary thrombolysis [31]. However, no prior study has examined whether tPA-mediated complement activation occurs in ischemic brain.

The present study establishes for the first time that tPA administration dramatically enhances C3 cleavage in ischemic brain tissue. Even in MBL-null mice, in whom ischemia-induced complement activation is abrogated [15], tPA administration results in the generation of significant C3a in ischemic brain. This suggests that tPA-mediated complement cleavage occurs independently of MBL, the primary proximal complement activation pathway in stroke. Although we have not administered C3aRA to MBL-null mice subjected to cerebral ischemia, given the lack of significant post-ischemic complement activation observed in brains of these mice, we would not expect C3a receptor inhibition to be protective. Additionally, in the setting of tPA administration, given the significant increase in cerebral C3a, we would expect C3aRA administration to be protective and these experiments are planned for the future. Interestingly, in WT mice, administration of tPA promotes C3 cleavage even in the absence of ischemia. This suggests that intravascular tPA may influence the permeability of the blood-brain-barrier even in the absence of ischemia, and further work is necessary to delineate the mechanisms associated with this process.

Our *in vitro* findings demonstrate that tPA-mediated C3 cleavage occurs through a plasmin-mediated mechanism, as the addition of α 2-antiplasmin, a plasmin inhibitor, suppresses C3a production. The fact that CD35 does not similarly suppress C3 cleavage confirms that the C3 convertase is not involved in tPA-mediated C3 cleavage. Importantly, prior work has demonstrated that plasminogen receptors are upregulated at sites of cellular injury [32], supporting the concept that tPA-mediated conversion of plasminogen to plasmin might be enhanced locally at sites of injury such as at the ischemic cerebral endothelium.

The present study also confirms the neuroprotective effect of complement inhibition in stroke and represents the first effort to evaluate the functional effects of complement inhibition following tPA administration [1, 2, 5, 13, 15, 33]. In mice subjected to MCAO and treated with tPA, C3a generation is markedly increased despite a reduction in infarct volume. A reduction in infarct size following tPA administration has been previously reported in several MCAO models and likely relates to improved post-ischemic reflow [34], although we only monitored CBF through the immediate peri-operative period and therefore cannot confirm this supposition. Nevertheless, the observation of worsened relative brain edema and cerebral hemorrhage in spite of reduced infarct volume recapitulates clinical observations in human stroke patients [35]. We propose that the pathogenic effects of the C3a anaphylatoxin contribute substantially to the adverse effects of tPA in ischemic brain. Although the specific effect of C3a on brain edema has not previously been investigated in stroke, other experimental disease models have been used to convincingly demonstrate that the C3a/C3aR axis modulates inflammatory cell infiltration and endothelial permeability [36]. In addition to an exacerbation of brain edema, increased vascular permeability likely also contributes to the hemorrhage seen following tPA administration. Reperfusion into ischemic and permeable microvessels permits extravasation of red blood cells across the vasculature into adjacent brain tissue [37]. Further work is necessary to delineate the specific mechanisms responsible for the reduction in edema and hemorrhage observed following C3a receptor inhibition.

This study suffers from several important limitations. First, our evaluation of outcome at a single 24 hour time-point represents a substantial limitation. Further work to evaluate the long-term functional effects of complement inhibition following tPA administration is required and is planned for the future. Additionally, as these experiments were primarily designed to probe the mechanism of tPA-mediated complement activation, we did not perform post-ischemic dosing regimens which will ultimately be critical for translation of anti-complement strategies. Additionally, these experiments were performed using sterile water as the vehicle for reconstitution of the alteplase formulation of tPA. As such, administration of the vehicle alone intravenously may have resulted in a hypo-osmolar environment. We do not believe that this influenced the outcome of our edema analysis, which showed significantly increased relative edema in the tPA treated cohort relative to vehicle treated controls. Nevertheless, future experiments will utilize a true vehicle control injection which includes the non-tPA components of the Alteplase formulation to serve as a true vehicle control. Finally, we utilized an intraluminal filament model with tPA administered at the time of reperfusion. Although this model simulates effective thrombolysis as might occur with mechanical thrombectomy, additional work using both a permanent model and an embolic stroke model are critical. In particular, an embolic model of MCAO represents the most clinically-relevant model particularly in the setting of tPA-administration and these experiments are planned for the future.

In summary, the present study is the first to identify the critical interplay between the complement and coagulation cascades that occurs following intravenous tPA administration in stroke. This study demonstrates that tPA promotes C3 cleavage through an extrinsic pathway, and the C3a anaphylatoxin thus generated promotes post-ischemic brain hemorrhage and

cerebral edema. Pharmacologic inhibition of the C3aR abrogates these deleterious effects of tPA on the ischemic brain and represents a promising therapy for the treatment of stroke patients.

Acknowledgments

We would like to thank Dr. William Mack for his insightful critiques.

Author Contributions

Data curation: Xue-Jun Zhao, Timothy M. Larkin, Saif Ahmad.

Formal analysis: Xue-Jun Zhao.

Funding acquisition: Andrew F. Ducruet.

Investigation: Xue-Jun Zhao, Timothy M. Larkin, Molly A. Lauver, Saif Ahmad.

Methodology: Andrew F. Ducruet.

Project administration: Andrew F. Ducruet.

Resources: Andrew F. Ducruet.

Supervision: Andrew F. Ducruet.

Validation: Xue-Jun Zhao.

Writing – original draft: Xue-Jun Zhao, Andrew F. Ducruet.

Writing – review & editing: Saif Ahmad, Andrew F. Ducruet.

References

1. Mocco J, Mack WJ, Ducruet AF, Sosunov SA, Sughrue ME, Hassid BG, et al. Complement component C3 mediates inflammatory injury following focal cerebral ischemia. *Circ Res.* 2006; 99(2):209–17. <https://doi.org/10.1161/01.RES.0000232544.90675.42> PMID: 16778128.
2. Ducruet AF, Hassid BG, Mack WJ, Sosunov SA, Otten ML, Fusco DJ, et al. C3a receptor modulation of granulocyte infiltration after murine focal cerebral ischemia is reperfusion dependent. *J Cereb Blood Flow Metab.* 2008; 28(5):1048–58. <https://doi.org/10.1038/sj.jcbfm.9600608> PMID: 18197178.
3. Orsini F, Villa P, Parrella S, Zangari R, Zanier ER, Gesuete R, et al. Targeting mannose-binding lectin confers long-lasting protection with a surprisingly wide therapeutic window in cerebral ischemia. *Circulation.* 2012; 126(12):1484–94. <https://doi.org/10.1161/CIRCULATIONAHA.112.103051> PMID: 22879370; PubMed Central PMCID: PMC3478764.
4. Heydenreich N, Nolte MW, Gob E, Langhauser F, Hofmeister M, Kraft P, et al. C1-inhibitor protects from brain ischemia-reperfusion injury by combined antiinflammatory and antithrombotic mechanisms. *Stroke.* 2012; 43(9):2457–67. <https://doi.org/10.1161/STROKEAHA.112.660340> PMID: 22744646.
5. Elvington A, Atkinson C, Zhu H, Yu J, Takahashi K, Stahl GL, et al. The alternative complement pathway propagates inflammation and injury in murine ischemic stroke. *J Immunol.* 2012; 189(9):4640–7. <https://doi.org/10.4049/jimmunol.1201904> PMID: 23028050; PubMed Central PMCID: PMC3478485.
6. Cervera A, Planas AM, Justicia C, Urra X, Jensenius JC, Torres F, et al. Genetically-defined deficiency of mannose-binding lectin is associated with protection after experimental stroke in mice and outcome in human stroke. *PLoS One.* 2010; 5(2):e8433. <https://doi.org/10.1371/journal.pone.0008433> PMID: 20140243; PubMed Central PMCID: PMC2815773.
7. Huber-Lang M, Sarma JV, Zetoune FS, Rittirsch D, Neff TA, McGuire SR, et al. Generation of C5a in the absence of C3: a new complement activation pathway. *Nature medicine.* 2006; 12(6):682–7. <https://doi.org/10.1038/nm1419> PMID: 16715088.
8. Amara U, Flierl MA, Rittirsch D, Klos A, Chen H, Acker B, et al. Molecular intercommunication between the complement and coagulation systems. *J Immunol.* 2010; 185(9):5628–36. <https://doi.org/10.4049/jimmunol.0903678> PMID: 20870944; PubMed Central PMCID: PMC3123139.

9. Liu D, Cheng T, Guo H, Fernandez JA, Griffin JH, Song X, et al. Tissue plasminogen activator neurovascular toxicity is controlled by activated protein C. *Nature medicine*. 2004; 10(12):1379–83. <https://doi.org/10.1038/nm1122> PMID: 15516929.
10. Wang YF, Tsirka SE, Strickland S, Stieg PE, Soriano SG, Lipton SA. Tissue plasminogen activator (tPA) increases neuronal damage after focal cerebral ischemia in wild-type and tPA-deficient mice. *Nature medicine*. 1998; 4(2):228–31. PMID: 9461198.
11. Mori T, Wang X, Kline AE, Siao CJ, Dixon CE, Tsirka SE, et al. Reduced cortical injury and edema in tissue plasminogen activator knockout mice after brain trauma. *Neuroreport*. 2001; 12(18):4117–20. Epub 2001/12/14. PMID: 11742249.
12. Yepes M, Roussel BD, Ali C, Vivien D. Tissue-type plasminogen activator in the ischemic brain: more than a thrombolytic. *Trends Neurosci*. 2009; 32(1):48–55. <https://doi.org/10.1016/j.tins.2008.09.006> PMID: 18963068.
13. Ducruet AF, Zacharia BE, Sosunov SA, Gigante PR, Yeh ML, Gorski JW, et al. Complement inhibition promotes endogenous neurogenesis and sustained anti-inflammatory neuroprotection following reperfusion stroke. *PLoS One*. 2012; 7(6):e38664. <https://doi.org/10.1371/journal.pone.0038664> PMID: 22761695; PubMed Central PMCID: PMC3383680.
14. Ducruet AF, Sosunov SA, Visovatti SH, Petrovic-Djergovic D, Mack WJ, Connolly ES Jr., et al. Paradoxical exacerbation of neuronal injury in reperfused stroke despite improved blood flow and reduced inflammation in early growth response-1 gene-deleted mice. *Neurol Res*. 2011; 33(7):717–25. <https://doi.org/10.1179/1743132810Y.0000000022> PMID: 21756551.
15. Ducruet AF, Sosunov SA, Zacharia BE, Gorski J, Yeh ML, Derosa P, et al. The Neuroprotective Effect of Genetic Mannose-binding Lectin Deficiency is not Sustained in the Sub-acute Phase of Stroke. *Transl Stroke Res*. 2011; 2(4):588–99. <https://doi.org/10.1007/s12975-011-0104-2> PMID: 22505955; PubMed Central PMCID: PMC3324305.
16. Zhang WH, Wang X, Narayanan M, Zhang Y, Huo C, Reed JC, et al. Fundamental role of the Rip2/caspase-1 pathway in hypoxia and ischemia-induced neuronal cell death. *Proc Natl Acad Sci U S A*. 2003; 100(26):16012–7. <https://doi.org/10.1073/pnas.2534856100> PMID: 14663141; PubMed Central PMCID: PMC307684.
17. Zhang Y, Wang X, Baranov SV, Zhu S, Huang Z, Fellows-Mayle W, et al. Dipyron inhibits neuronal cell death and diminishes hypoxic/ischemic brain injury. *Neurosurgery*. 2011; 69(4):942–56. <https://doi.org/10.1227/NEU.0b013e318222afb2> PMID: 21552169; PubMed Central PMCID: PMC4163057.
18. Won S, Lee JH, Wali B, Stein DG, Sayeed I. Progesterone attenuates hemorrhagic transformation after delayed tPA treatment in an experimental model of stroke in rats: involvement of the VEGF-MMP pathway. *J Cereb Blood Flow Metab*. 2014; 34(1):72–80. <https://doi.org/10.1038/jcbfm.2013.163> PMID: 24045404; PubMed Central PMCID: PMC3887344.
19. Hara H, Huang PL, Panahian N, Fishman MC, Moskowitz MA. Reduced brain edema and infarction volume in mice lacking the neuronal isoform of nitric oxide synthase after transient MCA occlusion. *J Cereb Blood Flow Metab*. 1996; 16(4):605–11. <https://doi.org/10.1097/00004647-199607000-00010> PMID: 8964799.
20. Choudhri TF, Hoh BL, Solomon RA, Connolly ES Jr., Pinsky DJ. Use of a spectrophotometric hemoglobin assay to objectively quantify intracerebral hemorrhage in mice. *Stroke*. 1997; 28(11):2296–302. PMID: 9368579.
21. Weisman HF, Bartow T, Leppo MK, Marsh HC Jr., Carson GR, Concino MF, et al. Soluble human complement receptor type 1: in vivo inhibitor of complement suppressing post-ischemic myocardial inflammation and necrosis. *Science*. 1990; 249(4965):146–51. PMID: 2371562.
22. Zhang Y, Wang Y, Zuo Z, Wang Z, Roy J, Hou Q, et al. Effects of tissue plasminogen activator timing on blood-brain barrier permeability and hemorrhagic transformation in rats with transient ischemic stroke. *J Neurol Sci*. 2014; 347(1–2):148–54. <https://doi.org/10.1016/j.jns.2014.09.036> PMID: 25292413.
23. del Zoppo GJ, Poeck K, Pessin MS, Wolpert SM, Furlan AJ, Ferbert A, et al. Recombinant tissue plasminogen activator in acute thrombotic and embolic stroke. *Ann Neurol*. 1992; 32(1):78–86. <https://doi.org/10.1002/ana.410320113> PMID: 1642475.
24. Goyal M, Demchuk AM, Menon BK, Eesa M, Rempel JL, Thornton J, et al. Randomized assessment of rapid endovascular treatment of ischemic stroke. *N Engl J Med*. 2015; 372(11):1019–30. <https://doi.org/10.1056/NEJMoa1414905> PMID: 25671798.
25. Berkhemer OA, Fransen PS, Beumer D, van den Berg LA, Lingsma HF, Yoo AJ, et al. A randomized trial of intraarterial treatment for acute ischemic stroke. *N Engl J Med*. 2015; 372(1):11–20. <https://doi.org/10.1056/NEJMoa1411587> PMID: 25517348.
26. Berkhemer OA, van Zwam WH, Dippel DW, Investigators MC. Stent-Retriever Thrombectomy for Stroke. *N Engl J Med*. 2015; 373(11):1076. <https://doi.org/10.1056/NEJMc1508744#SA1> PMID: 26352821.

27. Saver JL, Goyal M, Bonafe A, Diener HC, Levy EI, Pereira VM, et al. Stent-retriever thrombectomy after intravenous t-PA vs. t-PA alone in stroke. *N Engl J Med*. 2015; 372(24):2285–95. <https://doi.org/10.1056/NEJMoa1415061> PMID: 25882376.
28. Yepes M, Sandkvist M, Moore EG, Bugge TH, Strickland DK, Lawrence DA. Tissue-type plasminogen activator induces opening of the blood-brain barrier via the LDL receptor-related protein. *J Clin Invest*. 2003; 112(10):1533–40. <https://doi.org/10.1172/JCI19212> PMID: 14617754; PubMed Central PMCID: PMC259131.
29. Wang X, Lee SR, Arai K, Lee SR, Tsuji K, Rebeck GW, et al. Lipoprotein receptor-mediated induction of matrix metalloproteinase by tissue plasminogen activator. *Nature medicine*. 2003; 9(10):1313–7. <https://doi.org/10.1038/nm926> PMID: 12960961.
30. Su EJ, Fredriksson L, Geyer M, Folestad E, Cale J, Andrae J, et al. Activation of PDGF-CC by tissue plasminogen activator impairs blood-brain barrier integrity during ischemic stroke. *Nature medicine*. 2008; 14(7):731–7. <https://doi.org/10.1038/nm1787> PMID: 18568034; PubMed Central PMCID: PMC2811427.
31. Bennett WR, Yawn DH, Migliore PJ, Young JB, Pratt CM, Raizner AE, et al. Activation of the complement system by recombinant tissue plasminogen activator. *J Am Coll Cardiol*. 1987; 10(3):627–32. PMID: 3114350.
32. Lacroix R, Sabatier F, Mialhe A, Basire A, Pannell R, Borghi H, et al. Activation of plasminogen into plasmin at the surface of endothelial microparticles: a mechanism that modulates angiogenic properties of endothelial progenitor cells in vitro. *Blood*. 2007; 110(7):2432–9. Epub 2007/07/04. <https://doi.org/10.1182/blood-2007-02-069997> PMID: 17606760; PubMed Central PMCID: PMC2495018.
33. Atkinson C, Song H, Lu B, Qiao F, Burns TA, Holers VM, et al. Targeted complement inhibition by C3d recognition ameliorates tissue injury without apparent increase in susceptibility to infection. *J Clin Invest*. 2005; 115(9):2444–53. <https://doi.org/10.1172/JCI25208> PMID: 16127466; PubMed Central PMCID: PMC1190375.
34. Kilic E, Hermann DM, Hossmann KA. Recombinant tissue plasminogen activator reduces infarct size after reversible thread occlusion of middle cerebral artery in mice. *Neuroreport*. 1999; 10(1):107–11. PMID: 10094143.
35. Tissue plasminogen activator for acute ischemic stroke. The National Institute of Neurological Disorders and Stroke rt-PA Stroke Study Group. *N Engl J Med*. 1995; 333(24):1581–7. <https://doi.org/10.1056/NEJM199512143332401> PMID: 7477192.
36. Schraufstatter IU, Trieu K, Sikora L, Sriramarao P, DiScipio R. Complement c3a and c5a induce different signal transduction cascades in endothelial cells. *J Immunol*. 2002; 169(4):2102–10. PMID: 12165538.
37. del Zoppo GJ, von Kummer R, Hamann GF. Ischaemic damage of brain microvessels: inherent risks for thrombolytic treatment in stroke. *J Neurol Neurosurg Psychiatry*. 1998; 65(1):1–9. PMID: 9667553; PubMed Central PMCID: PMC2170158.