

We are IntechOpen, the world's leading publisher of Open Access books Built by scientists, for scientists

4,800

Open access books available

122,000

International authors and editors

135M

Downloads

Our authors are among the

154

Countries delivered to

TOP 1%

most cited scientists

12.2%

Contributors from top 500 universities

**WEB OF SCIENCE™**Selection of our books indexed in the Book Citation Index
in Web of Science™ Core Collection (BKCI)

Interested in publishing with us? Contact book.department@intechopen.com

Numbers displayed above are based on latest data collected.

For more information visit www.intechopen.com

Genetics and Acquired Hearing Loss

Moza Al-Kowari and Meritxell Espino-Guarch

Abstract

Hearing loss (HL) is a worldwide disease with substantial economic costs for the public health. Around 466 million people have disabling hearing loss and the WHO estimated that by 2050 over 900 million people will suffer hearing loss. Several factors including infections, noise-exposure, ototoxic medications or genetic disorders could cause hearing impairment. Hearing devices such as cochlear implants and aids are the current therapies. Although the prevalence of hearing loss is very high, alternative treatments as pharmaceutical agents are currently insufficient. Within the past years, increased knowledge on hearing loss etiology and physiopathology opened new opportunities for future research towards hearing loss treatment. Here we aim to review current bibliography on genetics factors involved in hearing loss.

Keywords: hearing loss, genetics, syndromic, non-syndromic, age-related

1. Introduction

The World Health Organization (WHO) defines hearing loss (HL) as the inability to perceive the sounds with different grades of impairment, from slight to profound including deafness [1].

Sound waves move from outer (or external) to middle and then to the inner ear, three anatomically distinct structures of the ear which transmit the sound to a signal into the brain. The sound waves travel down the canal of the outer and middle ear until hitting the tympanic membrane. Vibrations from the middle ear create movement of the fluid in the inner ear. This movement of the fluid is transmitted through the tectorial membrane to the hair cells in the organ of Corti, then the stimulus is transmitted by electric signals up to the auditory nerve to the brain. The brain interprets the electrical signals as sound. **Figure 1** shows the different compartment of the ear as described above.

Depending on the compartment affected, hearing loss could be classified as *conductive* or *sensorineural*. Conductive hearing loss is when the outer and middle ear are affected, and it results in the inability to transmit sound waves to the inner ear [3]. On the other hand, impairments in the inner ear are known as sensorineural [4]. Conductive hearing loss could be treated by medication, surgery cochlear implants or hearing aids, meanwhile sensorineural is mostly irreversible because of the complexity of the structure, the limited regeneration and access to the sensory structures in the cochlea [5].

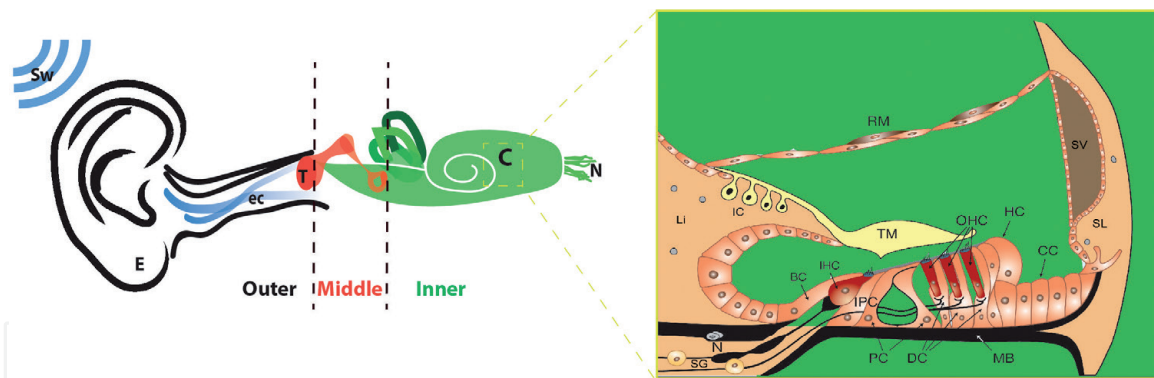


Figure 1.

Scheme of hearing system from external ear to inner ear. Path of the sound waves (in blue) through outer, middle and inner ear is represented where Sw, sound waves; E, external ear; ec, ear canal; T, tympanic membrane; C, cochlea; N, auditory nerve. Magnification of the cochlea structures (adapted from Sanchez-Calderon et al. [2]) is shown framed in yellow where BC, border cells; CC, Claudius's cells; DC, Deiter's cells; HC, Hensen's cells; IC, intermediate cells; IHC, inner hair cells; IPC, inner phalangeal cells; Li, spiral limbus; N, cochlear neurons; MB, Basilar Membrane; OHC, outer hair cells; PC, pillar cells; RM, Reisner's membrane; SG, spiral ganglion; SL, spiral ligament; SV, stria vascularis and TM, tectorial membrane.

2. Hearing loss etiology

There are several causes of hearing loss affecting over 500 million people worldwide [6]. Approximately 50% of the hearing impairment has a genetic etiology, the remaining cases are attributed to external factor such as noise or injury (acquired/spontaneous). In addition, the contribution of both (genetic predisposition and environment) is very common as found in age-related hearing loss [7, 8].

Inherited hearing loss can be autosomal recessive or dominant, X-linked or mitochondrial-related. The autosomal recessive hearing loss is caused by pathogenic variant in both alleles (the child inherits them from both parents). Autosomal dominant inheritance occurs when variants in one single allele are able to cause hearing loss. Independent of the inheritance pattern, genetics of hearing loss are classified as syndromic when they are associated with pathologies in other organs or malformations of the external ear and non-syndromic [6]. Approximately 30% of hearing loss are syndromic whereas the 70% remaining are non-syndromic [9]. Each type of hearing loss (syndromic and non-syndromic) is further classified according to the mode of inheritance into autosomal recessive, autosomal dominant, X-linked and mitochondrial hearing loss.

2.1 Syndromic hearing loss

Syndromic hearing loss (SHL) is a form of hearing impairments in which it is associated with other diseases or symptoms. Most commonly SHL is associated with diseases that affect eyes, nervous system and skin. SHL accounts for 30% of hereditary hearing loss and can be inherited in an autosomal recessive, dominant and X-linked patterns. Moreover, several genes described in SHL are also causing non-syndromic hearing loss (NSHL) such as mutations in CDH23 gene causing either Usher syndrome type 1D and autosomal recessive NSHL (DFNB12) (OMIM: 605516) [10].

2.1.1 Autosomal dominant SHL

Waardenburg syndrome (WS) is first described in 1951 by Waardenburg. It is one of the most common congenital, sensorineural SHL [11]. Clinical symptoms include lateral displacement of the inner canthus of the eye (dystopia canthorum),

pigmentations of the hair, eye and skin. It is estimated that WS is accounting for 2–5% of congenital hearing loss cases. According to the presence or absence of the clinical symptoms, Waardenburg syndrome is divided into four subtypes: WS1, WS2, WS3 and WS4. Patients with WS1, usually has dystopia canthorum, while patient with WS2 are not. WS3 also called Klein-Waardenburg syndrome characterized by dystopia canthorum and upper limb abnormalities. The last type WS4 also called Waardenburg-Shah syndrome is associated with Hirschsprung disease. Patients with WS4 are suffering from blockage of the large intestine and neurological defects. According to the hereditary hearing loss homepage, six genes are associated with WS (**Table 1**) [12]. These genes are essential for the development of melanocytes and have a major role in the function of the inner ear.

Branchio-Oto-Renal Syndrome (BOR) is the second common autosomal dominant congenital SHL. It is characterized by malformations in the ears and is associated with different types of hearing loss: conductive, sensorineural and mixed hearing loss. Moreover, BOR syndrome is affecting kidneys structure and functions which results in renal abnormalities [13]. The frequency of BOR syndrome is estimated to be 1 in 40,000 individuals. Mutations in Eyes Absent homolog 1 (*EYA1*), Sine Oculis Homebox 5 (*SIX5*) and Sine Oculis Homebox 1 (*SIX1*) genes are found to be associated with BOR syndrome (**Table 1**). These genes are required for normal embryonic development of different organs including both the kidneys and the ears.

Syndrome	Gene	OMIM entry	Inheritance
Alport syndrome	<i>COL4A3</i>	120070	AR
	<i>COL4A4</i>	120131	AR
	<i>COL4A5</i>	303630	XL
Branchio-Oto-Renal syndrome	<i>EYA1</i>	601653	AD
	<i>SIX5</i>	600963	AD
	<i>SIX1</i>	601205	AD
CHARGE syndrome	<i>CHD7</i>	608892	AD
	<i>SEMA3E</i>	608166	AD
Jervell and Lange-Nielsen syndrome	<i>KNCQ1</i>	607542	AR
	<i>KCNE1</i>	176261	AR
Norrie disease	<i>NDP</i>	300658	XL
Pendred syndrome	<i>SLC26A4</i>	605646	AR
	<i>KCNJ10</i>	602208	AR
	<i>FOX11</i>	601093	AR
Perrault syndrome	<i>HSD17B4</i>	601860	AR
	<i>HARS2</i>	600783	AR
	<i>CLPP</i>	601119	AR
	<i>LARS2</i>	604544	AR
	<i>TWINK</i>	606075	AR
	<i>ERAL1</i>	607435	AR
Stickler syndrome	<i>COL2A1</i>	120140	AD
	<i>COL11A1</i>	120280	AD
	<i>COL11A2</i>	120290	AD
	<i>COL9A1</i>	120210	AR
	<i>COL9A2</i>	120260	AR

Syndrome	Gene	OMIM entry	Inheritance
Treacher Collins syndrome	<i>TCOF1</i>	606847	AD
	<i>POLR1D</i>	613715	AD
	<i>POLR1C</i>	610060	AD
Usher syndrome	<i>MYO7A</i>	276903	AD
	<i>USH1C</i>	605242	AR
	<i>CDH23</i>	605516	AR
	<i>PCDH15</i>	605514	AR
	<i>SANS</i>	607696	AR
	<i>USH2A</i>	608400	AR
	<i>ADGRV1</i>	602851	AR
	<i>WHRN</i>	607928	AR
	<i>CLRN1</i>	606397	AR
	<i>HARS</i>	142810	AR
Waardenburg syndrome	<i>PAX3</i>	606597	AD
	<i>MITF</i>	156845	AD
	<i>SNAI2</i>	602150	AD
	<i>SOX10</i>	602229	AD
	<i>PAX3</i>	606597	AD
	<i>EDNRB</i>	131244	AR
	<i>EDN3</i>	131242	AR
	<i>SOX10</i>	602229	AR

Table 1.
List of syndromic hearing loss and its associated genes [12].

CHARGE syndrome is another form of autosomal dominant hearing loss syndrome that affects several organs. Patients with CHARGE syndrome are characterized by different phenotypes, from which the name of the syndrome comes from, this includes: Coloboma, Heart defects, Atresia choanae, growth Retardation, Genital abnormalities and Ear abnormalities. The degree of abnormalities varies from one patient to another. It ranges from very severe and vital cases to minor phenotypes. The prevalence of CHARGE syndrome estimated to be 1 in 8500 to 10,000 newborns worldwide. Chromodomain helicase DNA-binding protein-7 (*CHD7*) is found to be the common cause of CHARGE syndrome. *CHD7* is a transcription factor protein that regulates chromatin [14].

2.1.2 Autosomal recessive SHL

Usher syndrome is an autosomal recessive sensorineural hearing loss (SNHL) with retinitis [15]. According to the clinical phenotype, Usher syndrome is classified to three main types: Usher 1 (USH1), Usher 2 (USH2) and Usher 3 (USH3). USH1 is characterized by severe to profound SNHL, severe vestibular impairments and early onset retinitis pigmentosa. Mutations in several genes are found to be the cause of USH1 syndrome (**Table 1**). The most common genes causing USH1 are *MYO7A* and *CHD23*. Both genes are important for the development and function of inner ear hair cells. Patients with USH2 are found to suffer from moderate to severe SNHL with mid onset retinitis pigmentosa and no vestibular impairment. Usherin (*USH2A*) and Adhesion-G protein coupled receptor VI (*ADGRVI*) are found to be

mutated in patients diagnosed with USH2. The last type is USH3 that is characterized by variable phenotypes of progressive hearing loss, vestibular impairment and late onset retinitis pigmentosa. The prevalence of Usher syndrome is estimated to be 1 in 6000 to 10,000 with USH1 and USH2 being the most common types.

The second common autosomal recessive SHL is *Pendred Syndrome* which is characterized by hearing loss and thyroid enlargement [16]. The hearing loss ranges from severe to profound are usually developed at early childhood [17]. A characteristic feature of Pendred syndrome is the Mondini malformation which is a combination of enlarged vestibular aqueduct and abnormal shape of the cochlea. The prevalence of Pendred syndrome is ranged from 1 to 7.5 per 100,000 newborns. Three genes are found to be mutated in patients with Pendred syndrome: *SLC26A4* which encodes for sodium-independent transporter of chloride iodide protein called Pendrin [18], *FOXI1* [19] and *KCNJ10* [20]. Approximately 50% of Pendred syndrome patients had mutations in *SLC26A4* gene, whereas the other two genes mutated in Pendred syndrome patients account for less than 2% of the cases are).

Jervell and Lange-Nielsen Syndrome is the third common autosomal recessive syndromic hearing loss. This condition is characterized by profound hearing loss with arrhythmia and long QT interval in the electrocardiogram that may result in heart failure and sudden death [21]. The prevalence of this syndrome is estimated to affect 1.6–6 per million people worldwide [22]. Genes found to be mutated in patients with this syndrome are potassium channel voltage-gated KQT-like subfamily member 1 (*KCNQ1*) [23] and potassium channel voltage-gated ISK-related subfamily member 1 (*KCNE1*) [24] with majority of the mutations (90%) occurs in *KCNQ1*. These channels are important for the movement of the potassium ions in order to maintain the normal function of the inner ear and cardiac muscle.

2.1.3 X-linked SHL

Hearing loss conditions inherited with an X-linked pattern are rare. Only few syndromes with few patients were reported. Norrie disease and Mohr-Tranebjaerg syndrome are examples of X-Linked SHL.

Norrie disease is a rare X-linked recessive disorder characterized by progressive visual impairment. One-third of males with Norrie disease will develop progressive hearing loss and other phenotype-like intellectual disabilities. Mutation in *NDP* gene is the cause of 95% of the affected individuals. *NDP* is a gene that encodes Norrin protein which regulates vascularization of the retina [25].

Mohr-Tranebjaerg syndrome also called deafness dystonia optic atrophy syndrome is another X-linked recessive syndrome that is associated with early onset hearing loss, movement disability and visual impairment. Less than 70 cases of this syndrome were reported worldwide. *TIMM8A* is the causative gene for this syndrome which encodes the Translocase of Inner Mitochondrial Membrane 8 homolog A protein. This protein is important for the development of nervous system [26].

2.1.4 Mitochondrial-linked SHL

Maternally inherited diabetes and deafness (MIDD) is a mitochondrial disorder causing a syndromic form of diabetes accompanied by sensorineural hearing loss and some cases include renal problems, pigmentary retinopathy, ptosis, myopathy, cardiomyopathy and/or neuro-psychiatric symptoms (OMIM: 520000) [27, 28]. Mutations in MT-TL1, MT-TK or MT-TE mitochondrial genes coding for mtRNAs, which participate in the protein production in mitochondria and impair their functioning had been linked in MIDD [29].

2.2 Non-syndromic hearing loss

Hearing loss which is not associated with any other disease or symptoms is called non-syndromic hearing loss (NSHL). It accounts for more than 70% of hereditary hearing loss. According to the hereditary hearing loss homepage, there are more than 100 genes associated with NSHL and more than 6000 causative variants are identified so far which makes it extremely heterogeneous [30].

According to the mode of inheritance, NSHL can be classified as autosomal recessive (75–85%), autosomal dominant (20–25%) and X-linked or mitochondrial (1–2%). The loci responsible for NSHL are named DEN which stands for Deafness. Letter “A” is added, if the mode of inheritance is autosomal dominant (DFNA), “B” if the inheritance is recessive (DFNB) and “X” if the inheritance is X-linked (DFNX). The numbers indicate the chronological order of gene discovery.

2.2.1 Autosomal dominant NSHL genes (DFNA)

Autosomal dominant forms account for 20–25% of NSHL and are characterized by post-lingual progressive hearing loss [31]. More than 40 genes are associated with autosomal dominant NSHL. *DIAPH1* gene which is located in the DFNA1 locus is one of the first loci described for autosomal dominant NSHL. It encodes protein that is important for polymerization with actin which plays major role in cytoskeletal of hair cells in the inner ear. Mutations in *DIAPH1* are associated with early onset progressive hearing loss and some patients may have mild thrombocytopenia without bleeding tendencies [32].

WFS1 encodes for Wolframin protein which plays role in regulating cellular Ca_2^+ homeostasis and is involved in the process of sensory perception of sound. Mutations in *WFS1* are found to be associated with DFNA6, DFNA14 and DFNA38 in which they are characterized by hearing loss in low frequency [33, 34]. Some missense mutations in this gene are also associated with congenital profound hearing loss, progressive optic atrophy and diabetes. The above-mentioned phenotypes are a form of autosomal recessive hearing loss condition known as Wolfram syndrome [35].

The *TECTA* gene that encodes the tectorin-alpha protein forms the tectorial membrane in the cochlea and the otolithic membrane in the vestibular system. Mutations in *TECTA* are found in families with DFNA8/12 in which hearing loss could be pre- or post-lingual [36]. The severity of hearing loss varies depending on the domain where the mutation occurs. Some mutations in *TECTA* are also associated with DFNB21 hearing loss in which hearing loss is prelingual with severe to profound phenotype [37].

Deafness autosomal dominant 5 (*DFNA5*) gene that encodes for the Gasdermin-E protein is another gene associated with autosomal dominant non-syndromic hearing loss [38]. Gasdermin-E plays essential role in cellular response to DNA damage by regulating TP53.

Other genes associated with autosomal dominant hearing loss are listed in **Table 2**.

2.2.2 Autosomal recessive NSHL

Autosomal recessive hearing loss account for majority (75–85%) forms of non-syndromic hearing loss in which the hearing loss is prelingual and severe to profound. The most common gene causing autosomal recessive NSHL is *GJB2* accounts for 50% of the cases. The other 50% of the autosomal recessive NSHL resulted from mutations in 70 genes (**Table 2**).

Gene	Locus	OMIM entry	Inheritance
<i>ACTG1</i>	DFNA20/26	102560	AD
<i>ADCY1</i>	DFNB44	103072	AR
<i>AIFM1</i>	DFNX5	300169	XL
<i>BDP1</i>	DFNB49	607012	AR
<i>BSND</i>	DFNB73	606412	AR
<i>CABP2</i>	DFNB93	607314	AR
<i>CCDC50</i>	DFNA44	611051	AD
<i>CD164</i>	DFNA66	603356	AD
<i>CDC14A</i>	DFNB32/105	601728	AR
<i>CDH23</i>	DFNB12	605516	AR
<i>CEACAM16</i>	DFNA4B	614591	AD
<i>CIB2</i>	DFNB48	605564	AR
<i>CLDN14</i>	DFNB29	605608	AR
<i>CLIC5</i>	DFNB103	607293	AR
<i>COCH</i>	DFNA9	603196	AD
<i>COL11A1</i>	DFNA37	120280	AD
<i>COL11A2</i>	DFNB53, DFNA13	120290	AR, AD
<i>COL4A6</i>	DFNX6	303631	XL
<i>CRYM</i>	DFNA40	123740	AD
<i>DCDC2</i>	DFNB66	605755	AR
<i>DIAPH1</i>	DFNA1	602121	AD
<i>DMXL2</i>		612186	AD
<i>ELMOD3</i>	DFNB88	615427	AR
<i>EPS8</i>	DFNB102	600206	AR
<i>EPS8L2</i>	DFNB106	614988	AR
<i>ESPN</i>	DFNB36	606351	AR
<i>ESRP1</i>		609245	AR
<i>ESRRB</i>	DFNB35	602167	AR
<i>EYA4</i>	DFNA10	603550	AD
<i>FAM65B</i>	DFNB104	611410	AR
<i>GIPC3</i>	DFNB15/72/95	608792	AR
<i>GJB2</i>	DFNB1A, DFNA3A	121011	AR, AD
<i>GJB3</i>	DFNA2B	603324	AD
<i>GJB6</i>	DFNB1B, DFNA3B	604418	AR, AD
<i>GPSM2</i>	DFNB82	609245	AR
<i>GRHL2</i>	DFNA28	608576	AD
<i>GRXCR1</i>	DFNB25	613283	AR
<i>GRXCR2</i>	DFNB101	615762	AR
<i>GSDME/DFNA5</i>	DFNA5	608798	AD
<i>HGF</i>	DFNB39	142409	AR
<i>HOMER2</i>	DFNA68	604799	AD
<i>IFNLR1</i>	DFNA2C	607404	AD
<i>ILDR1</i>	DFNB42	609739	AR

Gene	Locus	OMIM entry	Inheritance
<i>KARS</i>	DFNB89	601421	AR
<i>KCNQ4</i>	DFNA2A	603537	AD
<i>KITLG</i>	DFNA69	184745	AD
<i>LHFPL5</i>	DFNB66/67	609427	AR
<i>LMX1A</i>	DFNA7	600298	AD
<i>LOXHD1</i>	DFNB77	613072	AR
<i>LRTOMT/COMT2</i>	DFNB63	612414	AR
<i>MARVELD2</i>	DFNB49	610572	AR
<i>MCM2</i>	DFNA70	116945	AD
<i>MET</i>	DFNB97	164860	AR
<i>MIRN96</i>	DFNA50	611606	AD
<i>MPZL2</i>		604873	AR
<i>MSRB3</i>	DFNB74	613719	AR
<i>MTRNR1</i>		561000	MIT
<i>MTTS1</i>		590080	MIT
<i>MYH14</i>	DFNA4A	608568	AD
<i>MYH9</i>	DFNA17	160775	AD
<i>MYO15A</i>	DFNB3	602666	AR
<i>MYO3A</i>	DFNB30	606808	AR, AD
<i>MYO6</i>	DFNB37, DFNA22	600970	AR, AD
<i>MYO7A</i>	DFNB2, DFNA11	276903	AR, AD
<i>NARS2</i>	DFNB94	612803	AR
<i>NLRP3</i>	DFNA34	606416	AD
<i>OSBPL2</i>	DFNA67	606731	AD
<i>OTOA</i>	DFNB22	607038	AR
<i>OTOF</i>	DFNB9	603681	AR
<i>OTOG</i>	DFNB18B	604487	AR
<i>OTOGL</i>	DFNB84	614925	AR
<i>P2RX2</i>	DFNA41	600844	AD
<i>PCDH15</i>	DFNB23	605514	AR
<i>PDE1C</i>		602987	AD
<i>PDZD7</i>	DFNB57	612971	AR
<i>PJVK</i>	DFNB59	610219	AR
<i>PNPT1</i>	DFNB70	610316	AR
<i>POU3F4</i>	DFNX2	300039	XL
<i>POU4F3</i>	DFNA15	602460	AD
<i>PPIP5K2</i>	DFNB100	611648	AR
<i>PRPS1</i>	DFNX1	311850	XL
<i>PTPRQ</i>	DFNB84, DFNA73	603317	AR, AD
<i>RDX</i>	DFNB24	179410	AR
<i>REST</i>	DFNA27	600571	AD
<i>ROR1</i>	DFNB108	612959	AR
<i>S1PR2</i>	DFNB68	609427	AR
<i>SERPINB6</i>	DFNB91	173321	AR

Gene	Locus	OMIM entry	Inheritance
<i>SIX1</i>	DFNA23	601205	AD
<i>SLC17A8</i>	DFNA25	607557	AD
<i>SLC22A4</i>	DFNB60	604943	AR
<i>SLC26A4</i>	DFNB4	605646	AR
<i>SLC26A5</i>	DFNB61	604943	AR
<i>SMAC/DIABLO</i>	DFNA64	605219	AD
<i>SMPX</i>	DFNX4	300226	XL
<i>STRC</i>	DFNB16	606440	AR
<i>SYNE4</i>	DFNB76	615535	AR
<i>TBC1D24</i>	DFNB86, DFNA65	613577	AR, AD
<i>TECTA</i>	DFNB21, DFNA8/12	602574	AR, AD
<i>TJP2</i>	DFNA51	607709	AD
<i>TMC1</i>	DFNB7/11, DFNA36	606706	AR, AD
<i>TMEM132E</i>	DFNB99	616178	AR
<i>TMIE</i>	DFNB6	607237	AR
<i>TMPRSS3</i>	DFNB8/10	605511	AR
<i>TNC</i>	DFNA56	187380	AD
<i>TPRN</i>	DFNB79	613354	AR
<i>TRIOBP</i>	DFNB28	609761	AR
<i>TSPEAR</i>	DFNB98	612920	AR
<i>Unknown</i>	DFNY1	400043	YL
<i>USH1C</i>	DFNB18	605242	AR
<i>WBP2</i>		606962	AR
<i>WFS1</i>	DFNA6/14/38	606201	AD
<i>WHRN</i>	DFNB31	607928	AR

Table 2.

List of genes associated with autosomal dominant (AD), autosomal recessive (AR), X-linked (XL) and mitochondrial (MIT) non-syndromic hearing loss (NSHL) [12].

GJB2 gene is one of the gap junction proteins that are expressed in the inner ear, which encodes connexin 26. This protein allows the exchange of potassium ions between the cells in the inner ear. More than 100 mutations identified in *GJB2* were found to cause DFNB1 and DFNA3 [39].

Other gene related to *GJB2* is *GJB6* that encodes for connexin 30 protein. Studies show that both genes can be inherited together and 8% of patients with *GJB2* mutation also carry mutation in *GJB6* [40].

OTOF gene encodes otoferlin protein that is responsible for the neural transmission at the synaptic cleft of the inner hair cell. Mutations in this gene cause prelingual, profound autosomal recessive hearing loss (DFNB9) and will result in damage of the neural receptors of the inner ear that will result on interruption of the nerve pathways to the brain [41].

Conventional and unconventional myosins are group of genes that are functioning as actin-binding proteins. Conventional myosins regulate contractility of actin filaments, while unconventional myosins are essential for vesicle trafficking and endocytosis [42]. Mutations in some unconventional myosins are associated with NSHL. *MYO6* is an example of unconventional myosins that is expressed in the

inner hair cell of the cochlea. Mutation in *MYO6* causes DFNB37, a form of non-syndromic deafness characterized by prelingual severe to profound hearing loss [43]. Other genes are listed in **Table 2**.

2.2.3 X-linked NSHL

This form of hearing loss is very rare and only few genes are associated with non-syndromic hearing loss (**Table 2**). This form of hearing loss is characterized by progressive, conductive and sensorineural hearing loss. Mutations in *POU3F4* gene which cause DFNX2, account for 50% of the cases [44]. *POU3F4* gene encode for POU domain class 3 transcription factor 4 protein, which regulates the proliferation of neural cells in middle and inner ear early during development. Because this form of hearing loss is X-linked, the severity of hearing loss differs from male to female. In males, hearing loss is prelingual and range from severe to profound while in females hearing loss is post-lingual and less severe.

2.2.4 Mitochondrial-linked NSHL

Despite the crucial role of mitochondria producing the energy for the cell, there are mtDNA mutations which lead to non-syndromic hearing impairment. The carriers exhibited sensorineural hearing loss with variable severity and onset [45]. These mutations have been reported in the mitochondrial genes encoding for 12S rRNA and tRNA genes [46, 47].

2.3 Age-related hearing loss

The auditory system exhibits senescent changes with the past time which could trigger to acquire sensorineural hearing loss. The most of acquired-hearing loss are characterized by a bilateral inner ear degeneration determined by genetic factors superimposed with environmental stress [48], excluding injuries and severe infections. Noise, drugs, aging and/or other systemic conditions (i.e., diabetes or hypertension [49, 50]) are numerous variables that can contribute to the final outcome of the disease [51, 52]. It is habitual among the causes of life related hearing loss that the severity progress beginning as mild loss and worsening over time.

The noise-induced hearing loss (NIHL) is one of the most common work-related diseases caused by the extreme exposure to noise. Recurrent exposure to noise causes physical damage to hair cells in the cochlea. Moreover, genetic predisposition and systemic conditions also contribute to the prevalence and severity of the phenotype making it difficult to distinguish the cause [53]. In the same line, there is a correlation between hazardous daily noise exposure and the prevalence of hearing loss among youth population [54, 55].

Ototoxic agents like certain drugs or heavy metals could contribute to the development of hearing impairment. Drugs such as cisplatin and aminoglycoside trigger hair cells apoptosis by enhancing the production of oxygen reactivity spices and has up to 50% reported incidence of irreversible hearing loss [56, 57].

The age-related hearing loss (ARHL) or presbycusis is caused by progressive atrophy of the inner ear during aging [58, 59]. The onset and prevalence of the disease vary widely as is multifactorial and many components (genetic and environmental) could play a role. Moreover, the heritability of ARHL had been established around 50% [60–64] and through genome-wide association studies and animal models, several age-related hearing loss genes had been identified [65–67]. The estimated prevalence of ARHL is one-third of adults above 65 years old and it doubles by each decade of life span [68, 69].

ARHL had been well-documented during the years because of its high prevalence in the population. Characterized cochlea mainly by atrophy in the basal turns of the cochlea and is manifested by abrupt high-tone hearing loss [70, 71]. ARHL is commonly classified as sensory, neural and metabolic. Sensory ARHL stems from the progressive degeneration of organ of Corti [72], neural ARHL is considered when there is 50% or more of cochlear neurons loss [73] and metabolic ARHL is

Gene	Gene name	Phenotype	Study	Ref.
<i>APOE</i>	Apolipoprotein E	undefined	GWAS	[79]
<i>ARHI</i>	Age-related Hearing Loss	SN, M	GWAS	[80–82]
<i>CDH23</i>	Cadherin-related 23	SN, M	Model, GWAS	[83–86]
<i>COX 3</i>	cytochrome c oxidase subunit 3	M	Model	[87, 88]
<i>EDN1</i>	Endothelin-1	M	Model, GWAS	[89, 90]
<i>GRHL2</i>	Grainyhead-like 2	SN	GWAS	[91]
<i>GRM7</i>	Metabotropic glutamate receptor type 7	SN	GWAS	[92]
<i>GST</i>	Glutathione S-transferase	M	Model, GWAS	[93–95]
<i>IQGAP2</i>	IQ motif containing GTPase activating protein 2	undefined	GWAS	[96, 97]
<i>ITGA8</i>	Integrin, alpha 8	SN	Model	[98, 99]
<i>KCNMA1</i>	Potassium large conductance calcium-activated channel, subfamily M, alpha member 1	SN	Model	[100]
<i>KCNQ1</i>	Potassium voltage-gated channel, KQT-like subfamily, member 1	SN	GWAS	[101, 102]
<i>KCNQ4</i>	Potassium voltage-gated channel, KQT-like subfamily, member 4	SN, M	Model, GWAS	[103, 104]
<i>NAT2</i>	N-acetyltransferase 2	M	GWAS	[105–107]
<i>P2X</i>	Ligand-gated ion channel purinergic receptor 2	undefined	GWAS	[108]
<i>PCDH15</i>	Protocadherin-related 15	SN	Model, GWAS	[109, 110]
<i>PTPRD</i>	tyrosine phosphatase, receptor type D	undefined	GWAS	[111]
<i>SLC26A4</i>	Solute carrier family 26 member 4	SN	Model	[112]
<i>SLC7A8</i>	Solute carrier family 7 member 8	SN, M	Model, GWAS	[67]
<i>SLC9A3R1</i>	Regulator 1 of SLC9 transporter	SN	Model, GWAS	[113]
<i>SPATC1L</i>	Spermatogenesis and centriole associated 1	undefined	GWAS	[114]
<i>SPNS2</i>	Spinster homolog 2	M	Model	[115, 116]
<i>TBL1Y</i>	Transducin beta-like 1 Y-linked	SN	Model, GWAS	[117]
<i>THRB</i>	Thyroid hormone receptor 1	SN, M	Model, GWAS	[118]
<i>TNF</i>	Tumor necrosis factor	M	GWAS	[119]
<i>UCP2</i>	Uncoupling protein 2	SN	GWAS	[120, 121]

Inner ear phenotype classification: sensorineural (SN), metabolic (M) and both of them (SN and M). Study type: genome-wide association study and study-case (GWAS) and in vitro or in vivo model (Model).

Table 3.
 ARHL-related genes.

caused by the atrophy of the stria vascularis resulting in a decrease in endolymphatic potential [74]. Also, there is a mixed type where the progressive degeneration of sensory cells is observed along loss of cochlear neurons [75–77]. Moreover, still controversial if the loss of neurons is a secondary consequence or a primary cause.

The task to distinct between genetic and environmental factors in acquired hearing loss is very challenging. In this regard, to progress the understanding of the mechanisms that lead to the damage, physiopathology of age-related hearing loss had been assessed by *in vitro* (cell lines) and *in vivo* (rodents and zebrafish) models [70]. The studies provided evidences of specific inner damage such as inflammation, oxidative stress, reduced cochlear blood flow, disrupted ion hemostasis and death of sensory and neuronal cells [78]. **Table 3** summarizes all current knowledge on ARHL-related genetic factors.

2.3.1 Consequences of suffering ARHL

Age-related hearing loss affects communication and information reception reducing the quality of live and psychosocial well-being (e.g., anxiety or depression) of elder population. Limitation in communication has an impact on social and personal relationships triggering to loss of autonomy and dependency [122, 123]. Even though the World Health Organization estimates that by 2025 approximately 500 million will suffer from age-related hearing loss; there is a lack of awareness by health care professionals as well as no educational programs on how patients could overcome obstacles caused by hearing loss.

Few studies have investigated the psychological factor and how individuals develop their lives in the presence of hearing loss. The studies reveal that maladaptive behavior (e.g., escape, avoiding social interaction and/or pretending to understand) has a negative effect on well-being of elder patients comparing to adaptive strategies (e.g., training verbal skills or self-awareness) [124, 125]. Additionally, there is a significant increase of hearing aids use by cases who attend audiology clinic with a relative than others attending alone [126]. Therefore, elder population with acquired hearing loss requires social support from family and health care professionals. Educational programs on how to use hearing aids and communication strategies as well as counseling for follow-up and feedback are needed in order to increase adherence to treatment and improve life quality [127].

3. Hearing loss treatments

Hearing loss is not a curable disease however science made some considerable progress. Current therapies based on cochlear implants (a device that provides direct electrical stimulation to the auditory nerve in the inner ear) and hearing aids (are non-surgically placed in the ear canal) which help patients to recover partly hearing.

Hearing aids could be a stigma in the society as are negatively perceived as well as expensive making that only one out of five people who could benefit from a hearing aid actually wears it (WHO, [128]). Therefore, the major barriers to improve hearing in elder population include perception that hearing loss is a normal part of aging or is not amenable to treatment.

Based on the animal research studies, several clinical trials are working to investigate the effects of a variety of drugs to prevent hearing loss including anti-oxidants, ROS scavengers, alpha lipoic acid, N-acetylcysteine or anti-inflammatory agents [129–134].

New generation treatments based on microRNA, short interfering RNA as well as tissue regeneration using stem cells are promising tools [135, 136]. Due to

the in-depth study of stem cell and its therapeutic potential, stem cell technology opened new approaches for hair cell and auditory nerve regeneration [137, 138]. By using two strategies of endogenous stem cell activation and exogenous stem cell transplantation, exciting results on restoring hearing function are showed. Even though the use of stem cells to repair cochlear injury is relatively new, they appear to be a very promising possibility for the treatment of hearing loss induced by noise, aging or ototoxic drugs. These three causes comprise a major part of the burden of hearing loss, so if this approach were successful could have a large public health effect of hearing impairment. Further research should be supported to solve the problems which limit stem cells application in humans.

4. Conclusion

Of the senses that humans use to interact with their environment, hearing is considered as one of the dominant after vision. The loss of hearing can occur through genetic mutations, through environmental factors or through a combination of both. ARHL is an increasingly important public health problem which reduces life's quality, isolation, dependence and frustration. Besides basic research and more effective therapies for the optimal treatment, management of the condition is still a pending task. Social support by the family and health care professionals is critical to the life quality of the older adults with hearing loss. The quality of care and well-being could be improved by active education and counseling to provide appropriate support to facilitate everyday communication.

Acknowledgements

Meritxell Espino-Guarch received funding from Qatar Foundation Grant ID: JSREP07-03-3-006.

Conflict of interest

There is no conflict of interest.

Author details

Moza Al-Kowari* and Meritxell Espino-Guarch
Translational Medicine, Sidra Medicine Hospital, Doha, Qatar

*Address all correspondence to: malkowari@sidra.org

IntechOpen

© 2019 The Author(s). Licensee IntechOpen. This chapter is distributed under the terms of the Creative Commons Attribution License (<http://creativecommons.org/licenses/by/3.0>), which permits unrestricted use, distribution, and reproduction in any medium, provided the original work is properly cited. 

References

- [1] Duthey B. Hearing Loss. WHO; 2018. Available from: <https://www.who.int/news-room/fact-sheets/detail/deafness-and-hearing-loss>
- [2] Sanchez-Calderon H, Rodriguez-de la Rosa L, Milo M, Pichel JG, Holley M, Varela-Nieto I. RNA microarray analysis in prenatal mouse cochlea reveals novel IGF-I target genes: Implication of MEF2 and FOXM1 transcription factors. *PLoS One*. 2010;5(1):e8699
- [3] Zahnert T. The differential diagnosis of hearing loss. *Deutsches Ärzteblatt International*. 2011;108(25):433-443. quiz 44
- [4] Wilson WR, Byl FM, Laird N. The efficacy of steroids in the treatment of idiopathic sudden hearing loss. A double-blind clinical study. *Archives of Otolaryngology*. 1980;106(12):772-776
- [5] Lee JH, Lee MY, Lim Y, Knowles J, Kim HW. Auditory disorders and future therapies with delivery systems. *Journal of Tissue Engineering*. 2018;9:2041731418808455
- [6] Angeli S, Lin X, Liu XZ. Genetics of hearing and deafness. *Anatomical Record (Hoboken)*. 2012;295(11):1812-1829
- [7] Cruickshanks KJ, Nondahl DM, Tweed TS, Wiley TL, Klein BE, Klein R, et al. Education, occupation, noise exposure history and the 10-yr cumulative incidence of hearing impairment in older adults. *Hearing Research*. 2010;264(1-2):3-9
- [8] Christensen K, Frederiksen H, Hoffman HJ. Genetic and environmental influences on self-reported reduced hearing in the old and oldest old. *Journal of the American Geriatrics Society*. 2001;49(11):1512-1517
- [9] Smith RJ, Bale JF, White KR. Sensorineural hearing loss in children. *Lancet*. 2005;365(9462):879-890
- [10] Bork JM, Peters LM, Riazuddin S, Bernstein SL, Ahmed ZM, Ness SL, et al. Usher syndrome 1D and nonsyndromic autosomal recessive deafness DFNB12 are caused by allelic mutations of the novel cadherin-like gene CDH23. *American Journal of Human Genetics*. 2001;68(1):26-37
- [11] Waardenburg PJ. A new syndrome combining developmental anomalies of the eyelids, eyebrows and nose root with pigmentary defects of the iris and head hair and with congenital deafness. *American Journal of Human Genetics*. 1951;3(3):195-253
- [12] Hereditary Hearing Loss Homepage. 2018. Available from: <https://hereditaryhearingloss.org/>
- [13] Smith RJH. Branchiootorenal spectrum disorder. In: Adam MP, Ardinger HH, Pagon RA, Wallace SE, LJM B, Stephens K, et al., editors. *GeneReviews((R))*. Seattle (WA): University of Washington, Seattle University of Washington, Seattle; 1993. GeneReviews is a registered trademark of the University of Washington, Seattle. All rights reserved.
- [14] Martin DM. Epigenetic developmental disorders: CHARGE syndrome, a case study. *Current Genetic Medicine Reports*. 2015;3(1):1-7
- [15] Vernon M. Usher's syndrome—Deafness and progressive blindness. Clinical cases, prevention, theory and literature survey. *Journal of Chronic Diseases*. 1969;22(3):133-151
- [16] Furth ED, Carvalho M, Vianna B. Familial goiter due to an organification defect in euthyroid siblings. *Journal of Clinical*

Endocrinology and Metabolism.
1967;27(8):1137-1140

[17] Reardon W, Trembath RC. Pendred syndrome. *Journal of Medical Genetics*. 1996;33(12):1037-1040

[18] Pourová R, Janousek P, Jurovcík M, Dvoráková M, Malíková M, Rasková D, et al. Spectrum and frequency of SLC26A4 mutations among Czech patients with early hearing loss with and without enlarged vestibular aqueduct (EVA). *Annals of Human Genetics*. 2010;74(4):299-307

[19] Yang T, Vidarsson H, Rodrigo-Blomqvist S, Rosengren SS, Enerback S, Smith RJ. Transcriptional control of SLC26A4 is involved in Pendred syndrome and nonsyndromic enlargement of vestibular aqueduct (DFNB4). *American Journal of Human Genetics*. 2007;80(6):1055-1063

[20] Yang T, Gurrola JG, Wu H, Chiu SM, Wangemann P, Snyder PM, et al. Mutations of KCNJ10 together with mutations of SLC26A4 cause digenic nonsyndromic hearing loss associated with enlarged vestibular aqueduct syndrome. *American Journal of Human Genetics*. 2009;84(5):651-657

[21] Jervell A, Lange-Nielsen F. Congenital deaf-mutism, functional heart disease with prolongation of the Q-T interval and sudden death. *American Heart Journal*. 1957;54(1):59-68

[22] Koffler T, Ushakov K, Avraham KB. Genetics of hearing loss: Syndromic. *Otolaryngologic Clinics of North America*. 2015;48(6):1041-1061

[23] Neyroud N, Tesson F, Denjoy I, Leibovici M, Donger C, Barhanin J, et al. A novel mutation in the potassium channel gene KVLQT1 causes the Jervell and Lange-Nielsen cardioauditory syndrome. *Nature Genetics*. 1997;15(2):186-189

[24] Schulze-Bahr E, Wang Q, Wedekind H, Haverkamp W, Chen Q, Sun Y, et al. KCNE1 mutations cause jervell and Lange-Nielsen syndrome. *Nature Genetics*. 1997;17(3):267-268

[25] Berger W, van de Pol D, Warburg M, Gal A, Bleeker-Wagemakers L, de Silva H, et al. Mutations in the candidate gene for Norrie disease. *Human Molecular Genetics*. 1992;1(7):461-465

[26] Roesch K, Hynds PJ, Varga R, Tranebjaerg L, Koehler CM. The calcium-binding aspartate/glutamate carriers, citrin and aralar1, are new substrates for the DDP1/TIMM8a-TIMM13 complex. *Human Molecular Genetics*. 2004;13(18):2101-2111

[27] Li HZ, Li RY, Li M. A review of maternally inherited diabetes and deafness. *Frontiers in Bioscience (Landmark Edition)*. 2014;19:777-782

[28] Naing A, Kenchaiah M, Krishnan B, Mir F, Charnley A, Egan C, et al. Maternally inherited diabetes and deafness (MIDD): Diagnosis and management. *Journal of Diabetes and Its Complications*. 2014;28(4):542-546

[29] Tabebi M, Charfi N, Kallabi F, Alila-Fersi O, Ben Mahmoud A, Tlili A, et al. Whole mitochondrial genome screening of a family with maternally inherited diabetes and deafness (MIDD) associated with retinopathy: A putative haplotype associated to MIDD and a novel MT-CO2 m.8241T>G mutation. *Journal of Diabetes and its Complications*. 2017;31(1):253-259

[30] Sloan-Heggen CM, Smith RJ. Navigating genetic diagnostics in patients with hearing loss. *Current Opinion in Pediatrics*. 2016;28(6):705-712

[31] Taylor KR, Deluca AP, Shearer AE, Hildebrand MS, Black-Ziegelbein EA, Anand VN, et al. AudioGene: Predicting hearing loss genotypes from phenotypes

to guide genetic screening. *Human Mutation*. 2013;**34**(4):539-545

[32] Neuhaus C, Lang-Roth R, Zimmermann U, Heller R, Eisenberger T, Weikert M, et al. Extension of the clinical and molecular phenotype of DIAPH1-associated autosomal dominant hearing loss (DFNA1). *Clinical Genetics*. 2017;**91**(6):892-901

[33] Bespalova IN, Van Camp G, Bom SJ, Brown DJ, Cryns K, DeWan AT, et al. Mutations in the Wolfram syndrome 1 gene (WFS1) are a common cause of low frequency sensorineural hearing loss. *Human Molecular Genetics*. 2001;**10**(22):2501-2508

[34] Young TL, Ives E, Lynch E, Person R, Snook S, MacLaren L, et al. Non-syndromic progressive hearing loss DFNA38 is caused by heterozygous missense mutation in the Wolfram syndrome gene WFS1. *Human Molecular Genetics*. 2001;**10**(22):2509-2514

[35] Cryns K, Sivakumaran TA, Van den Ouweland JM, Pennings RJ, Cremers CW, Flothmann K, et al. Mutational spectrum of the WFS1 gene in Wolfram syndrome, nonsyndromic hearing impairment, diabetes mellitus, and psychiatric disease. *Human Mutation*. 2003;**22**(4):275-287

[36] Verhoeven K, Van Laer L, Kirschhofer K, Legan PK, Hughes DC, Schatteman I, et al. Mutations in the human alpha-tectorin gene cause autosomal dominant non-syndromic hearing impairment. *Nature Genetics*. 1998;**19**(1):60-62

[37] Mustapha M, Weil D, Chardenoux S, Elias S, El-Zir E, Beckmann JS, et al. An alpha-tectorin gene defect causes a newly identified autosomal recessive form of sensorineural pre-lingual non-syndromic deafness, DFNB21. *Human Molecular Genetics*. 1999;**8**(3):409-412

[38] Van Laer L, Huizing EH, Verstreken M, van Zuijlen D, Wauters JG, Bossuyt PJ, et al. Nonsyndromic hearing impairment is associated with a mutation in DFNA5. *Nature Genetics*. 1998;**20**(2):194-197

[39] Kelsell DP, Dunlop J, Stevens HP, Lench NJ, Liang JN, Parry G, et al. Connexin 26 mutations in hereditary non-syndromic sensorineural deafness. *Nature*. 1997;**387**(6628):80-83

[40] Venkatesh MD, Moorchung N, Puri B. Genetics of non syndromic hearing loss. *Medical Journal Armed Forces India*. 2015;**71**(4):363-368

[41] Yasunaga S, Grati M, Cohen-Salmon M, El-Amraoui A, Mustapha M, Salem N, et al. A mutation in OTOF, encoding otoferlin, a FER-1-like protein, causes DFNB9, a nonsyndromic form of deafness. *Nature Genetics*. 1999;**21**(4):363-369

[42] Duman D, Tekin M. Autosomal recessive nonsyndromic deafness genes: A review. *Frontiers in Bioscience (Landmark Edition)*. 2012;**17**:2213-2236

[43] Ahmed ZM, Morell RJ, Riazuddin S, Gropman A, Shaukat S, Ahmad MM, et al. Mutations of MYO6 are associated with recessive deafness, DFNB37. *American Journal of Human Genetics*. 2003;**72**(5):1315-1322

[44] de Kok YJ, van der Maarel SM, Bitner-Glindzicz M, Huber I, Monaco AP, Malcolm S, et al. Association between X-linked mixed deafness and mutations in the POU domain gene POU3F4. *Science*. 1995;**267**(5198):685-688

[45] Van Camp G, Smith RJ. Maternally inherited hearing impairment. *Clinical Genetics*. 2000;**57**(6):409-414

[46] Moassass F, Al-Halabi B, Nweder MS, Al-Achkar W. Investigation of the mtDNA mutations in Syrian families

with non-syndromic sensorineural hearing loss. *International Journal of Pediatric Otorhinolaryngology*. 2018;**113**:110-114

[47] Chen X, Nie Z, Wang F, Wang J, Liu XW, Zheng J, et al. Late onset nonsyndromic hearing loss in a Dongxiang Chinese family is associated with the 593T>C variant in the mitochondrial tRNA. *Mitochondrion*. 2017;**35**:111-118

[48] Howarth A, Shone GR. Ageing and the auditory system. *Postgraduate Medical Journal*. 2006;**82**(965):166-171

[49] Cruickshanks KJ, Dhar S, Dinces E, Fifer RC, Gonzalez F, Heiss G, et al. Hearing impairment prevalence and associated risk factors in the hispanic community health study/study of Latinos. *JAMA Otolaryngology. Head and Neck Surgery*. 2015;**141**(7):641-648

[50] Cruickshanks KJ, Nondahl DM, Dalton DS, Fischer ME, Klein BE, Klein R, et al. Smoking, central adiposity, and poor glycemic control increase risk of hearing impairment. *Journal of the American Geriatrics Society*. 2015;**63**(5):918-924

[51] Bovo R, Ciorba A, Martini A. Environmental and genetic factors in age-related hearing impairment. *Aging Clinical and Experimental Research*. 2011;**23**(1):3-10

[52] Momi SK, Wolber LE, Fabiane SM, MacGregor AJ, Williams FM. Genetic and environmental factors in age-related hearing impairment. *Twin Research and Human Genetics*. 2015;**18**(4):383-392

[53] Attias J, Horovitz G, El-Hatib N, Nageris B. Detection and clinical diagnosis of noise-induced hearing loss by otoacoustic emissions. *Noise and Health*. 2001;**3**(12):19-31

[54] Shargorodsky J, Curhan SG, Curhan GC, Eavey R. Change in prevalence of

hearing loss in US adolescents. *Journal of the American Medical Association*. 2010;**304**(7):772-778

[55] Henderson E, Testa MA, Hartnick C. Prevalence of noise-induced hearing-threshold shifts and hearing loss among US youths. *Pediatrics*. 2011;**127**(1):e39-e46

[56] Callejo A, Sedó-Cabezón L, Juan ID, Llorens J. Cisplatin-induced ototoxicity: Effects, mechanisms and protection strategies. *Toxics*. 2015;**3**(3):268-293

[57] Jiang M, Karasawa T, Steyger PS. Aminoglycoside-induced cochleotoxicity: A review. *Frontiers in Cellular Neuroscience*. 2017;**11**:308

[58] McGill TJ, Schuknecht HF. Human cochlear changes in noise induced hearing loss. *The Laryngoscope*. 1976;**86**(9):1293-1302

[59] Liu XZ, Yan D. Ageing and hearing loss. *Journal of Pathology*. 2007;**211**(2):188-197

[60] Wingfield A, Panizzon M, Grant MD, Toomey R, Kremen WS, Franz CE, et al. A twin-study of genetic contributions to hearing acuity in late middle age. *The Journals of Gerontology. Series A, Biological Sciences and Medical Sciences*. 2007;**62**(11):1294-1299

[61] Cruickshanks KJ, Klein R, Klein BE, Nondahl DM. Sunlight and the 5-year incidence of early age-related maculopathy: The beaver dam eye study. *Archives of Ophthalmology*. 2001;**119**(2):246-250

[62] Gates GA, Couropmitree NN, Myers RH. Genetic associations in age-related hearing thresholds. *Archives of Otolaryngology—Head and Neck Surgery*. 1999;**125**(6):654-659

[63] Karlsson KK, Harris JR, Svartengren M. Description and

primary results from an audiometric study of male twins. *Ear and Hearing*. 1997;**18**(2):114-120

[64] Cruickshanks KJ, Wiley TL, Tweed TS, Klein BE, Klein R, Mares-Perlman JA, et al. Prevalence of hearing loss in older adults in beaver dam, Wisconsin. The epidemiology of hearing loss study. *American Journal of Epidemiology*. 1998;**148**(9):879-886

[65] Payton PDA. Genetics of age-related hearing loss. *Genetics of Deafness*. 2016;**20**:84-96

[66] Van Eyken E, Van Camp G, Van Laer L. The complexity of age-related hearing impairment: Contributing environmental and genetic factors. *Audiology and Neuro-Otology*. 2007;**12**(6):345-358

[67] Espino Guarch M, Font-Llitjós M, Murillo-Cuesta S, Errasti-Murugarren E, Celaya AM, Giroto G, et al. Mutations in L-type amino acid transporter-2 support. *eLife*. 2018;7

[68] Lin FR. Hearing loss and cognition among older adults in the United States. *The Journals of Gerontology. Series A, Biological Sciences and Medical Sciences*. 2011;**66**(10):1131-1136

[69] Lin FR, Thorpe R, Gordon-Salant S, Ferrucci L. Hearing loss prevalence and risk factors among older adults in the United States. *The Journals of Gerontology. Series A, Biological Sciences and Medical Sciences*. 2011;**66**(5):582-590

[70] Fetoni AR, Picciotti PM, Paludetti G, Troiani D. Pathogenesis of presbycusis in animal models: A review. *Experimental Gerontology*. 2011;**46**(6):413-425

[71] Lee KY. Pathophysiology of age-related hearing loss (peripheral and central). *Korean Journal of Audiology*. 2013;**17**(2):45-49

[72] Schuknecht HF, Gacek MR. Cochlear pathology in presbycusis. *The Annals of Otology, Rhinology, and Laryngology*. 1993;**102**(1 Pt 2):1-16

[73] Makary CA, Shin J, Kujawa SG, Liberman MC, Merchant SN. Age-related primary cochlear neuronal degeneration in human temporal bones. *Journal of the Association for Research in Otolaryngology*. 2011;**12**(6):711-717

[74] Pauler M, Schuknecht HF, White JA. Atrophy of the stria vascularis as a cause of sensorineural hearing loss. *The Laryngoscope*. 1988;**98**(7):754-759

[75] Stankovic K, Rio C, Xia A, Sugawara M, Adams JC, Liberman MC, et al. Survival of adult spiral ganglion neurons requires erbB receptor signaling in the inner ear. *Journal of Neuroscience*. 2004;**24**(40):8651-8661

[76] Sugawara M, Murtie JC, Stankovic KM, Liberman MC, Corfas G. Dynamic patterns of neurotrophin 3 expression in the postnatal mouse inner ear. *Journal of Comparative Neurology*. 2007;**501**(1):30-37

[77] Zilberstein Y, Liberman MC, Corfas G. Inner hair cells are not required for survival of spiral ganglion neurons in the adult cochlea. *Journal of Neuroscience*. 2012;**32**(2):405-410

[78] Castañeda R, Natarajan S, Jeong SY, Hong BN, Kang TH. Traditional oriental medicine for sensorineural hearing loss: Can ethnopharmacology contribute to potential drug discovery? *Journal of Ethnopharmacology*. 2018;**231**:409-428

[79] O'Grady G, Boyles AL, Speer M, DeRuyter F, Strittmatter W, Worley G. Apolipoprotein E alleles and sensorineural hearing loss. *International Journal of Audiology*. 2007;**46**(4):183-186

[80] Johnson KR, Erway LC, Cook SA, Willott JF, Zheng QY. A major gene

affecting age-related hearing loss in C57BL/6J mice. *Hearing Research*. 1997;**114**(1-2):83-92

[81] DeStefano AL, Gates GA, Heard-Costa N, Myers RH, Baldwin CT. Genomewide linkage analysis to presbycusis in the Framingham Heart Study. *Archives of Otolaryngology—Head and Neck Surgery*. 2003;**129**(3):285-289

[82] Garringer HJ, Pankratz ND, Nichols WC, Reed T. Hearing impairment susceptibility in elderly men and the DFNA18 locus. *Archives of Otolaryngology—Head and Neck Surgery*. 2006;**132**(5):506-510

[83] Di Palma F, Pellegrino R, Noben-Trauth K. Genomic structure, alternative splice forms and normal and mutant alleles of cadherin 23 (*Cdh23*). *Gene*. 2001;**281**(1-2):31-41

[84] Noben-Trauth K, Zheng QY, Johnson KR. Association of cadherin 23 with polygenic inheritance and genetic modification of sensorineural hearing loss. *Nature Genetics*. 2003;**35**(1):21-23

[85] Davis RR, Kozel P, Erway LC. Genetic influences in individual susceptibility to noise: A review. *Noise and Health*. 2003;**5**(20):19-28

[86] Liu S, Li S, Zhu H, Cheng S, Zheng QY. A mutation in the *cdh23* gene causes age-related hearing loss in *Cdh23*(*nmf308/nmf308*) mice. *Gene*. 2012;**499**(2):309-317

[87] Markaryan A, Nelson EG, Hinojosa R. Quantification of the mitochondrial DNA common deletion in presbycusis. *The Laryngoscope*. 2009;**119**(6):1184-1189

[88] Markaryan A, Nelson EG, Hinojosa R. Major arc mitochondrial DNA deletions in cytochrome c oxidase-deficient human cochlear spiral ganglion cells. *Acta Oto-Laryngologica*. 2010;**130**(7):780-787

[89] Uchida Y, Sugiura S, Nakashima T, Ando F, Shimokata H. Endothelin-1 gene polymorphism and hearing impairment in elderly Japanese. *The Laryngoscope*. 2009;**119**(5):938-943

[90] Xu D, Tang Y, Liu S, Liu J. Expression and significance of endothelin 1 in spiral ganglion cells of guinea pig. *International Journal of Pediatric Otorhinolaryngology*. 2008;**72**(2):189-192

[91] Van Laer L, Van Eyken E, Franssen E, Huyghe JR, Topsakal V, Hendrickx JJ, et al. The grainyhead like 2 gene (*GRHL2*), alias *TFCP2L3*, is associated with age-related hearing impairment. *Human Molecular Genetics*. 2008;**17**(2):159-169

[92] Friedman RA, Van Laer L, Huentelman MJ, Sheth SS, Van Eyken E, Corneveaux JJ, et al. *GRM7* variants confer susceptibility to age-related hearing impairment. *Human Molecular Genetics*. 2009;**18**(4):785-796

[93] Bared A, Ouyang X, Angeli S, Du LL, Hoang K, Yan D, et al. Antioxidant enzymes, presbycusis, and ethnic variability. *Otolaryngology and Head and Neck Surgery*. 2010;**143**(2):263-268

[94] Takumi Y, Matsubara A, Tsuchida S, Ottersen OP, Shinkawa H, Usami S. Various glutathione S-transferase isoforms in the rat cochlea. *Neuroreport*. 2001;**12**(7):1513-1516

[95] Ateş NA, Unal M, Tamer L, Derici E, Karakaş S, Ercan B, et al. Glutathione S-transferase gene polymorphisms in presbycusis. *Otology and Neurotology*. 2005;**26**(3):392-397

[96] Luo H, Wu H, Shen H, Chen H, Yang T, Huang Z, et al. The European GWAS-identified risk SNP rs457717 within *IQGAP2* is not associated with age-related hearing impairment in Han male Chinese population. *European Archives of Oto-Rhino-Laryngology*. 2016;**273**(7):1677-1687

- [97] Van Laer L, Huyghe JR, Hannula S, Van Eyken E, Stephan DA, Mäki-Torkko E, et al. A genome-wide association study for age-related hearing impairment in the Saami. *European Journal of Human Genetics*. 2010;**18**(6):685-693
- [98] Goodman L, Zallocchi M. Integrin $\alpha 8$ and Pcdh15 act as a complex to regulate cilia biogenesis in sensory cells. *Journal of Cell Science*. 2017;**130**(21):3698-3712
- [99] Li F, Zhuang J, Chen Y, Gao B, Gu H, Zhou X. Difference of cervical vestibular evoked myogenic potentials in different audition stage of Ménière disease. *Lin Chuang Er Bi Yan Hou Tou Jing Wai Ke Za Zhi*. 2016;**30**(1):9-12
- [100] Rüttiger L, Sausbier M, Zimmermann U, Winter H, Braig C, Engel J, et al. Deletion of the Ca^{2+} -activated potassium (BK) alpha-subunit but not the BKbeta1-subunit leads to progressive hearing loss. *Proceedings of the National Academy of Sciences of the United States of America*. 2004;**101**(35):12922-12927
- [101] Wasano K, Mutai H, Obuchi C, Masuda S, Matsunaga T. A novel frameshift mutation in KCNQ4 in a family with autosomal recessive non-syndromic hearing loss. *Biochemical and Biophysical Research Communications*. 2015;**463**(4):582-586
- [102] Xiong H, Chu H, Zhou X, Huang X, Cui Y, Zhou L, et al. Simultaneously reduced NKCC1 and Na,K-ATPase expression in murine cochlear lateral wall contribute to conservation of endocochlear potential following a sensorineural hearing loss. *Neuroscience Letters*. 2011;**488**(2):204-209
- [103] Van Eyken E, Van Laer L, Franssen E, Topsakal V, Lemkens N, Laureys W, et al. KCNQ4: A gene for age-related hearing impairment? *Human Mutation*. 2006;**27**(10):1007-1016
- [104] Kubisch C, Schroeder BC, Friedrich T, Lütjohann B, El-Amraoui A, Marlin S, et al. KCNQ4, a novel potassium channel expressed in sensory outer hair cells, is mutated in dominant deafness. *Cell*. 1999;**96**(3):437-446
- [105] Unal M, Tamer L, Doğruer ZN, Yildirim H, Vayisoğlu Y, Camdeviren H. N-acetyltransferase 2 gene polymorphism and presbycusis. *The Laryngoscope*. 2005;**115**(12):2238-2241
- [106] Van Eyken E, Van Camp G, Franssen E, Topsakal V, Hendrickx JJ, Demeester K, et al. Contribution of the N-acetyltransferase 2 polymorphism NAT2*6A to age-related hearing impairment. *Journal of Medical Genetics*. 2007;**44**(9):570-578
- [107] Hein DW. N-acetyltransferase SNPs: Emerging concepts serve as a paradigm for understanding complexities of personalized medicine. *Expert Opinion on Drug Metabolism and Toxicology*. 2009;**5**(4):353-366
- [108] Yan D, Zhu Y, Walsh T, Xie D, Yuan H, Sirmaci A, et al. Mutation of the ATP-gated P2X(2) receptor leads to progressive hearing loss and increased susceptibility to noise. *Proceedings of the National Academy of Sciences of the United States of America*. 2013;**110**(6):2228-2233
- [109] Chen DY, Zhu WD, Chai YC, Chen Y, Sun L, Yang T, et al. Mutation in PCDH15 may modify the phenotypic expression of the 7511T>C mutation in MT-TS1 in a Chinese Han family with maternally inherited nonsyndromic hearing loss. *International Journal of Pediatric Otorhinolaryngology*. 2015;**79**(10):1654-1657
- [110] Zallocchi M, Delimont D, Meehan DT, Cosgrove D. Regulated vesicular trafficking of specific PCDH15 and VLGR1 variants in auditory hair cells. *Journal of Neuroscience*. 2012;**32**(40):13841-13859

- [111] Sakuma N, Moteki H, Azaiez H, Booth KT, Takahashi M, Arai Y, et al. Novel PTPRQ mutations identified in three congenital hearing loss patients with various types of hearing loss. *The Annals of Otology, Rhinology, and Laryngology*. 2015;**124**(Suppl 1):184S-192S
- [112] Ito T, Nishio A, Wangemann P, Griffith AJ. Progressive irreversible hearing loss is caused by stria vascularis degeneration in an Slc26a4-insufficient mouse model of large vestibular aqueduct syndrome. *Neuroscience*. 2015;**310**:188-197
- [113] Giroto G, Morgan A, Krishnamoorthy N, Cocca M, Brumat M, Bassani S, et al. Next generation sequencing and animal models reveal. *Frontiers in Genetics*. 2019;**10**:142
- [114] Morgan A, Vuckovic D, Krishnamoorthy N, Rubinato E, Ambrosetti U, Castorina P, et al. Next-generation sequencing identified SPATC1L as a possible candidate gene for both early-onset and age-related hearing loss. *European Journal of Human Genetics*. 2019;**27**(1):70-79
- [115] Chen J, Ingham N, Kelly J, Jadeja S, Goulding D, Pass J, et al. Spinster homolog 2 (spns2) deficiency causes early onset progressive hearing loss. *PLoS Genetics*. 2014;**10**(10):e1004688
- [116] Lu MH, Takemoto M, Watanabe K, Luo H, Nishimura M, Yano M, et al. Deficiency of sphingomyelin synthase-1 but not sphingomyelin synthase-2 causes hearing impairments in mice. *Journal of Physiology*. 2012;**590**(16):4029-4044
- [117] Di Stazio M, Collesi C, Vozzi D, Liu W, Myers M, Morgan A, et al. TBL1Y: A new gene involved in syndromic hearing loss. *European Journal of Human Genetics*. 2019;**27**(3):466-474
- [118] Ng L, Cordas E, Wu X, Vella KR, Hollenberg AN, Forrest D. Age-related hearing loss and degeneration of cochlear hair cells in mice lacking thyroid hormone receptor β 1. *Endocrinology*. 2015;**156**(10):3853-3865
- [119] Ren J, Li H, Lu Y. The determinations of tumor necrosis factor and interleukin 6 in serum of patients with sudden sensorineural hearing loss. *Lin Chuang Er Bi Yan Hou Ke Za Zhi*. 1998;**12**(7):311-313
- [120] Echtay KS. Mitochondrial uncoupling proteins—What is their physiological role? *Free Radical Biology and Medicine*. 2007;**43**(10):1351-1371
- [121] Mattiasson G, Shamloo M, Gido G, Mathi K, Tomasevic G, Yi S, et al. Uncoupling protein-2 prevents neuronal death and diminishes brain dysfunction after stroke and brain trauma. *Nature Medicine*. 2003;**9**(8):1062-1068
- [122] Contrera KJ, Betz J, Deal JA, Choi JS, Ayonayon HN, Harris T, et al. Association of Hearing Impairment and Emotional Vitality in older adults. *The Journals of Gerontology. Series B, Psychological Sciences and Social Sciences*. 2016;**71**(3):400-404
- [123] Kamil RJ, Lin FR. The effects of hearing impairment in older adults on communication partners: A systematic review. *Journal of the American Academy of Audiology*. 2015;**26**(2):155-182
- [124] Christensen VT, Datta Gupta N. Hearing loss and disability exit: Measurement issues and coping strategies. *Economics and Human Biology*. 2017;**24**:80-91
- [125] Moser S, Luxenberger W, Freidl W. The influence of social support and coping on quality of life among elderly with age-related hearing loss. *American Journal of Audiology*. 2017;**26**(2):170-179

- [126] Singh G, Launer S. Social context and hearing aid adoption. *Trends in Hearing*. 2016;**20**
- [127] Hickson L, Meyer C, Lovelock K, Lampert M, Khan A. Factors associated with success with hearing aids in older adults. *International Journal of Audiology*. 2014;**53**(Suppl 1):S18-S27
- [128] Organization WH. Multi-country assessment of National Capacity to provide hearing care. Geneva, Switzerland: WHO; 2013. p. 49
- [129] Freyer DR, Sung L, Reaman GH. Prevention of hearing loss in children receiving cisplatin chemotherapy. *Journal of Clinical Oncology*. 2009;**27**(2):317-318. Author reply 8-9
- [130] Seidman MD, Khan MJ, Bai U, Shirwany N, Quirk WS. Biologic activity of mitochondrial metabolites on aging and age-related hearing loss. *The American Journal of Otology*. 2000;**21**(2):161-167
- [131] Pouyatos B, Gearhart C, Nelson-Miller A, Fulton S, Fechter LD. Lipoic acid and 6-formylpterin reduce potentiation of noise-induced hearing loss by carbon monoxide: Preliminary investigation. *Journal of Rehabilitation Research and Development*. 2008;**45**(7):1053-1064
- [132] Rybak LP, Whitworth C, Somani S. Application of antioxidants and other agents to prevent cisplatin ototoxicity. *The Laryngoscope*. 1999;**109**(11):1740-1744
- [133] Sha SH, Qiu JH, Schacht J. Aspirin to prevent gentamicin-induced hearing loss. *The New England Journal of Medicine*. 2006;**354**(17):1856-1857
- [134] Van Wijk F, Staecker H, Keithley E, Lefebvre PP. Local perfusion of the tumor necrosis factor alpha blocker infliximab to the inner ear improves autoimmune neurosensory hearing loss. *Audiology and Neuro-Otology*. 2006;**11**(6):357-365
- [135] Wang H, Shi HB, Yin SK. Polyamidoamine dendrimers as gene delivery carriers in the inner ear: How to improve transfection efficiency. *Experimental and Therapeutic Medicine*. 2011;**2**(5):777-781
- [136] Mahmoudian-Sani MR, Mehri-Ghahfarrokhi A, Ahmadinejad F, Hashemzadeh-Chaleshtori M, Saidijam M, Jami MS. MicroRNAs: Effective elements in ear-related diseases and hearing loss. *European Archives of Oto-Rhino-Laryngology*. 2017;**274**(6):2373-2380
- [137] Abbas L, Rivolta MN. The use of animal models to study cell transplantation in neuropathic hearing loss. *Hearing Research*. 2019;**377**:72-87
- [138] Qiu Y, Qiu J. Stem cells: A new Hope for hearing loss therapy. *Advances in Experimental Medicine and Biology*. 2019;**1130**:165-180