

We are IntechOpen, the world's leading publisher of Open Access books Built by scientists, for scientists

4,800

Open access books available

122,000

International authors and editors

135M

Downloads

Our authors are among the

154

Countries delivered to

TOP 1%

most cited scientists

12.2%

Contributors from top 500 universities



WEB OF SCIENCE™

Selection of our books indexed in the Book Citation Index
in Web of Science™ Core Collection (BKCI)

Interested in publishing with us?
Contact book.department@intechopen.com

Numbers displayed above are based on latest data collected.
For more information visit www.intechopen.com



Monte Carlo Radiative Transfer Modeling of Underwater Channel

*Rafael M.G. Kraemer, Luís M. Pessoa
and Henrique M. Salgado*

Abstract

The radiative transfer equation (RTE) is a theoretical framework that can be used for predicting and interpreting underwater light fields in terms of the constituents of natural water bodies. However, the RTE is a complex integrodifferential equation and deriving exact solutions for it is a difficult task. In this chapter, we aim to present some details regarding Monte Carlo simulations and how this method may be applied to solve the RTE numerically. By solving the RTE, one may accurately predict the received power and estimate the channel bandwidth and several other measurable parameters with regard to multiple water conditions. Simulations will also be presented.

Keywords: RTE, underwater, optical, wireless, channel, propagation, photons, UOWC

1. Introduction

When compared with free space optical (FSO) communication channel, the underwater optical wireless communication (UOWC) shows unique characteristics. Because of this, the channel models usually used in FSO are not suited for UOWC, and different channel models must be developed to describe the different photon interactions under play.

Mobley [1] classified the optical properties of water into two different groups, inherent optical properties (IOPs) and apparent optical properties (AOPs). The two major IOPs that will attenuate light propagation in UOWC are absorption and scattering. Hence, any attempt in modeling the UOWC channel will need to consider absorption and scattering effects within specific link configurations.

Several theoretical models were employed by researchers to model the UOWC channel, being the Beer-Lambert law the most employed due to its simplicity [2]. Despite its simplicity, the Beer-Lambert law contains two implicit assumptions: that the transmitter and receiver are perfectly aligned and that all scattered photons are lost. The assumption that all photons that undergo scattering are lost will severely underestimate the received optical power, especially in water environments where scattering is the dominant IOP.

Another theoretical model for modeling the underwater channel is the radiative transfer equation (RTE) [3]. The RTE simply says that as a beam of radiation travels through a medium, in this case water, it will lose energy to absorption, gain energy by emission, and redistribute energy by scattering. Yet, as the RTE is an

integrodifferential equation involving different independent variables, an exact analytical solution is hard to find. In view of this, solving the RTE numerically is a preferred approach, being the most popular one the Monte Carlo simulation.

2. The radiative transfer equation

One important law of geometrical radiometry is the n-squared law for radiance. To derive it, we consider two mediums separated by a transparent surface; in that case, Snell's law states that the angles of an incident ray from medium 1 to medium 2 are related by:

$$n_1 \sin(\theta_1) = n_2 \sin(\theta_2), \quad (1)$$

where n is the index of refraction of the medium. Considering that a ray is simply a narrow beam of photons traveling in almost the same direction, and if we consider two narrow rays, incident and refracted, that will have solid angles given by:

$$\Delta\Omega_1 = \sin\theta_1 \Delta\theta_1 \Delta\phi, \quad (2)$$

$$\Delta\Omega_2 = \sin\theta_2 \Delta\theta_2 \Delta\phi, \quad (3)$$

and as seen in [3], squaring each side of Eq. (1) and multiplying by the Azimuthal spread, $\Delta\phi$, we obtain:

$$n_1^2 \cos\theta_1 \Delta\Omega_1 = n_2^2 \cos\theta_2 \Delta\Omega_2, \quad (4)$$

which is known as the Straubel's invariant. Consider now the radiances of the two rays, incident and refracted, defined as:

$$L_1 = \frac{\Delta P_1}{\Delta A_1 \Delta\Omega_1}, \quad (5)$$

$$L_2 = \frac{\Delta P_2}{\Delta A_2 \Delta\Omega_2}, \quad (6)$$

where $\Delta P_{1,2}$ is the spectral radiant power and $\Delta A_{1,2}$ is the cross section area of incident and refracted rays. The ratio between the refracted and incident rays is called the Fresnel transmittance:

$$\frac{\Delta P_1}{\Delta P_2} = T, \quad (7)$$

from which we can obtain:

$$\frac{L_2}{n_2^2} = T \frac{L_1}{n_1^2}, \quad (8)$$

which is the n-squared law for radiance. For the case of $T = 1$, which is the case of normal incidence on an air-water surface, Eq. (8) becomes:

$$\frac{L_2}{n_2^2} = \frac{L_1}{n_1^2}. \quad (9)$$

As seen in [3], this result is known as the fundamental theorem of radiometry and it states that the radiance divided by the refraction index squared is constant along any path; however, because all real substances will cause some absorption and scattering on the incident photons, the validity of theorem is restricted for paths in vacuum.

If we consider that a ray of radiance L_1 starts in a medium with index of refraction n_1 and goes through successive refractions and ends up with radiance L_S in a medium of refractive index n_s , we can come up with a formulation for successive crossings of a ray from one medium to another:

$$\frac{L_S}{L_1} = \prod_{j=1}^{s-1} T(j, j+1) \frac{n_s^2}{n_1^2}, \quad (10)$$

where $T(j, j+1)$ is the Fresnel transmittance of the interface between the media with refractive indexes n_j and n_{j+1} . From this, we can see that the radiance along a path will change due to variations in the real index of refraction along that same path. The index of refraction in a water body will change from point to point by random molecular motions, by organics or inorganic particulate matter and by turbulent fluctuations in temperature and salinity.

Considering a beam of radiance traveling from point \vec{x} to point $\vec{x} + \Delta \vec{x}$ and taking the limit as $\Delta r = |\Delta \vec{x}| \rightarrow 0$:

$$\lim_{\Delta r \rightarrow 0} \frac{\Delta(L/n^2)}{\Delta r} = \frac{D(L/n^2)}{Dr}, \quad (11)$$

being D/Dr the total rate of change along the path. The total rate of change can be expressed in terms of the advective derivative, or the substantive derivative, as referred by Mobley:

$$\frac{D}{Dr} = \frac{1}{v} \frac{D}{Dt}, \quad (12)$$

where v is the speed of light in the medium at position \vec{x} at time t for wavelength λ :

$$v(\vec{x}; \lambda) = c/n(\vec{x}; \lambda), \quad (13)$$

The operator D/Dt is:

$$\frac{D}{Dt} = \frac{\partial}{\partial t} + \vec{v} \cdot \nabla, \quad (14)$$

and the gradient operator ∇ is defined in the usual way. From these developments, we can rewrite Eq. (11) as:

$$\frac{D}{Dr} = \frac{1}{v} \frac{D}{Dt} = \frac{1}{v} \frac{\partial}{\partial t} + \hat{\xi} \cdot \nabla, \quad (15)$$

valid for photons traveling with speed v in the direction $\hat{\xi} = \vec{v} / v$.

Writing the expression for the change in L/n^2 along a path that combines all the physical phenomena causing that change, we obtain the most general form of the RTE for unpolarized radiance:

$$\frac{1}{v} \frac{\partial}{\partial t} \left(\frac{L}{n^2} \right) + \hat{\xi} \cdot \nabla \left(\frac{L}{n^2} \right) = -c \left(\frac{L}{n^2} \right) + L^E + L^I + L^S. \quad (16)$$

In Eq. (17), c is the beam attenuation coefficient, L^E , L^I , and L^S are the path functions for elastic scattering, inelastic scattering, and spontaneous emission, respectively. The path function for spontaneous emission is also referred in [3] as the source path function and can be considered as the contribution to total radiance from a light source and in the case of UOWC systems a laser diode or a light emitting diode (LED).

For UOWC systems, we are interested in the time-independent RTE in horizontally homogenous water bodies with a constant index of refraction. Because of this, the factor n^{-2} will divide both sides of Eq. (15). Hence, with $\partial L / \partial t = 0$ and using the notation adopted by Mobley where $x_3 = z$ and $\xi_3 = \cos\theta$, we obtain:

$$\hat{\xi} \cdot \nabla L = \xi_3 \frac{\partial L}{\partial x_3} = \cos\theta \frac{dL(\theta, \phi)}{dz}. \quad (17)$$

It is also usual [3] to combine L^I and L^S as an effective source function $S = L^I + L^S$. The RTE then becomes:

$$\cos\theta \frac{dL(\theta, \phi)}{dz} = -cL(\theta, \phi) + L^E(\theta, \phi) + S(\theta, \phi), \quad (18)$$

and the path function for elastic scattering, L^E :

$$L^E(\theta, \phi) = \int_{4\pi} L(\theta', \phi') \beta(\theta', \phi' \rightarrow \theta, \phi) d\Omega(\theta', \phi'), \quad (19)$$

Combining all these terms in Eq. (18), we can come up with the standard form of the RTE. As a simple statement, the IOPs and boundary conditions will go into the RTE and the final radiance will come out as a result. The standard form of the RTE, as shown in [4], is given by:

$$\cos\theta \frac{dL(\theta, \phi)}{cdz} = -L(\theta, \phi) + \omega_0 \int_{4\pi} \tilde{\beta}(\theta', \phi' \rightarrow \theta, \phi) L(\theta', \phi') d\Omega(\theta', \phi') + S(\theta, \phi), \quad (20)$$

where $L(\theta, \phi)$ represents the radiance in the direction (θ, ϕ) , ω_0 is the single scattering albedo, c is the beam attenuation coefficient, and $\tilde{\beta}(\theta, \phi)$ is the scattering phase function. Each one of these terms will be explained in more detail in the following sections.

2.1 Inherent optical properties

During the interaction of a photon with a water molecule, one of two things may happen: the photon may be absorbed, leaving the water molecule in a state with higher internal energy, or the photon may undergo scattering. Such scattering occurs when there is a change in the direction of the propagation of the photon or in the photon energy—or in both.

When scattering happens, if the molecule that interacted with the photon returns to its original internal energy state by emitting a photon of the same energy as the absorbed one, the scattering process is called elastic scattering; on the other

hand, if the excited molecule emits a photon of lower energy, i.e., a photon with a longer wavelength, the incident photon goes through a process called inelastic scattering. As seen in [3], the absorption coefficient, that will be introduced later in this chapter, accounts for both the conversion of radiant energy into heat and the loss of power at wavelength λ by inelastic scattering to other wavelengths. Mobley [3] refers to this as true absorption. In view of this, in the remaining of this chapter, we will treat the scattering as elastic, the loss of energy due inelastic scattering being included in the absorption coefficient.

To derive a mathematical coefficient for scattering and absorption, we assume the model shown in **Figure 1**.

A volume of water ΔV with thickness Δr is illuminated by a light beam with wavelength λ . Some part of the incident power, $P_I(\lambda)$, will be absorbed within the volume of water, $P_A(\lambda)$; some part, $P_S(\lambda, \theta)$, is scattered out of the beam at an angle θ and the remaining light power, $P_T(\lambda)$, is transmitted. Then by conservation of energy:

$$P_I(\lambda) = P_A(\lambda) + P_S(\lambda, \theta) + P_T(\lambda). \quad (21)$$

Using Eq. (22), we can define the ratio between the absorbed and incident power as the absorptance and the ratio between scattered power and incident power as scatterance. As already stated, when solving the RTE the IOPs usually employed are the absorption and the scattering coefficients which are the absorptance and scatterance per unit distance of the medium. Taking the limit of these terms as the water thickness Δr becomes infinitesimally small, we have:

$$a(\lambda) = \lim_{\Delta r \rightarrow 0} \frac{P_A(\lambda)}{P_I(\lambda)\Delta r}. \quad (22)$$

$$b(\lambda) = \lim_{\Delta r \rightarrow 0} \frac{P_S(\lambda)}{P_I(\lambda)\Delta r}. \quad (23)$$

The beam attenuation coefficient present in the RTE (Eqs. (16) and (20)) is written as:

$$c(\lambda) = a(\lambda) + b(\lambda). \quad (24)$$

Another useful IOP showing in the RTE is the single scattering albedo, ω_0 , that is defined as the ratio between the scattering and the beam attenuation coefficient:

$$\omega_0 = \frac{b(\lambda)}{c(\lambda)}. \quad (25)$$

In waters where the beam attenuation is due primarily to scattering, ω_0 is near one and when the beam attenuation is due primarily to absorption, ω_0 is near zero.

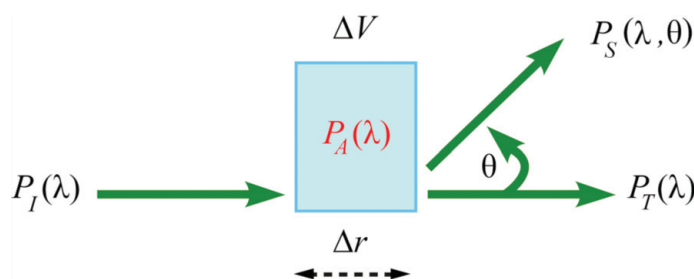


Figure 1.
 Geometry of IOPs for a volume of water ΔV .

In [3], it is possible to find the absorption, scattering, and the attenuation coefficients for several water types and wavelengths. The usual parameters considered for UOWC systems are the ones presented in **Table 1**.

As mentioned before, the ratio between the scattered power and incident power is referred as scatterance, that is the fraction of incident power scattered out of the beam through an angle θ into a solid angle $\Delta\Omega$. Defining the angular scatterance per unit distance and unit solid angle, $\beta(\theta, \lambda)$, as:

$$\beta(\theta, \lambda) = \lim_{\Delta r \rightarrow 0} \lim_{\Delta\Omega \rightarrow 0} \frac{P_S(\theta, \lambda)}{P_I(\lambda) \Delta r \Delta\Omega}. \quad (26)$$

In [3], we can see that the spectral power scattered into the given solid angle $\Delta\Omega$ is just as the spectral radiant intensity, $I_S(\theta, \lambda)$, scattered into the angle θ times the solid angle:

$$P_S(\theta, \lambda) = I_S(\theta, \lambda) \Delta\Omega, \quad (27)$$

if the incident power falls on an area ΔA , then the corresponding irradiance $E_i(\lambda) = P_I(\lambda) / \Delta A$. Recalling that ΔV is the volume of water that is illuminated by the incident beam:

$$\beta(\theta, \lambda) = \lim_{\Delta V \rightarrow 0} \frac{I_S(\theta, \lambda)}{E_i(\lambda) \Delta V}. \quad (28)$$

As said in [5], the form of Eq. (28) suggests the name volume scattering function (VSF), that is, the scattered intensity per unit incident irradiance per unit volume of water. Integrating $\beta(\theta, \lambda)$ over all directions gives the total scattered power per unit of incident irradiance and unit volume of water, or as defined in Eq. (23), the scattering coefficient:

$$b(\lambda) = 2\pi \int_0^\pi \beta(\theta, \lambda) \sin\theta d\theta. \quad (29)$$

Normalizing Eq. (26) with the scattering coefficient, we obtain the scattering phase function (SPF):

$$\tilde{\beta}(\theta, \lambda) = \frac{\beta(\lambda, \theta)}{b(\lambda)}. \quad (30)$$

The scattering phase function can be interpreted as a probability density function (PDF) for scattering from an incident direction (θ', ϕ') to a final direction (θ, ϕ) [5]. In general, the SPF must be solved numerically, or using tabulated data like the ones given by Petzold [6]. The scattering measurements made by Petzold

Water type	$c(\lambda) \text{ m}^{-1}$	ω_0
Clear waters	0.15	0.25
Coastal waters	0.4	0.55
Harbor I waters	1.1	0.83
Harbor II waters	2.19	0.83

Table 1.
Measured parameters for different water types.

are the most precise to this date, to the best of the author's knowledge, and widely cited in the literature. The measurements were carried in the Bahamas, San Pedro in California, and San Diego harbor also in California, corresponding to clear, coastal, and harbor waters, respectively.

3. Solving the radiative transfer equation: Monte Carlo simulation

The Monte Carlo name was coined by Nicholas Metropolis [7]. The modern version of the method was invented in the late 1940s and found use early use in the studies of neutron transport for the design of nuclear weapons [8, 9]. More recently, Monte Carlo techniques evolved and are now used to solve problems in physical sciences, economics, engineering, and pure mathematics.

Monte Carlo methods may be used to solve any problem that have a probabilistic interpretation, meaning that if the probability of occurrence of each separate event in a sequence of events is known, one can determine the probability that the entire sequence of events will occur. By tracing the fate of millions of photons according to statistical probabilities, a solution for the RTE is built. Each simulated photon path is randomly distinct from the others, as determined by the probabilities of absorption and scattering in the underwater channel.

The Monte Carlo simulations of photon propagation offer a flexible yet rigorous approach toward solving numerically the RTE. In the last decades, the exponential improvement in computer speeds attenuated the problem of the high computational cost of Monte Carlo simulations.

In the following subsections, a detailed description for building a solution for the RTE, step by step, will be shown.

As seen in [10], there are four main Monte Carlo methods for photon migration in turbid media, that is, four different ways to build photon's trajectories. The four methods are referred as the albedo-weight method (AW), the albedo-rejection method (AR), the absorption-scattering path length rejection method (ASPR), and the microscopic Beer-Lambert law method (mBLL).

The AW method considers a source emitting packets of many photons and after each interaction a fraction of the photons in the packet are absorbed, i.e., lost. In this type of simulation, the packet is emitted with an initial weight of 1 and at each interaction the current weight is multiplied by the albedo to account for the loss of photons by absorption and the packet continues propagating in the scattered direction with a reduced weight. This method has in its favor that there are no wasted computations because all photon packets eventually reach the detector. This approach was favored by several research papers [11–16].

In this chapter, we present a simulation using the AR method; the main advantage of this method is that it mimics what happens in nature by tracking individual photons emitted by some source. Naturally for this case, the computational time of the absorbed photons are wasted.

It is seen in the investigation conducted by Sassaroli that the total probability of detecting a photon is equivalent in the four methods and they have statistical equivalence, with some differences regarding the convergence time. When comparing the AW to the AR method, as one may expect, the AR will require, in most scenarios, more launched photons for convergence. However, it is also noted that in the AR method, the photon is detected or lost similarly to what happens in a time-resolved experiment in which photons are detected using the time-correlated single photon counting technique and the noise on the simulated response reproduces the Poisson statistics that typically characterize the noise in experiments. Therefore, as we already stated, the AR method reproduces a more physical simulation of

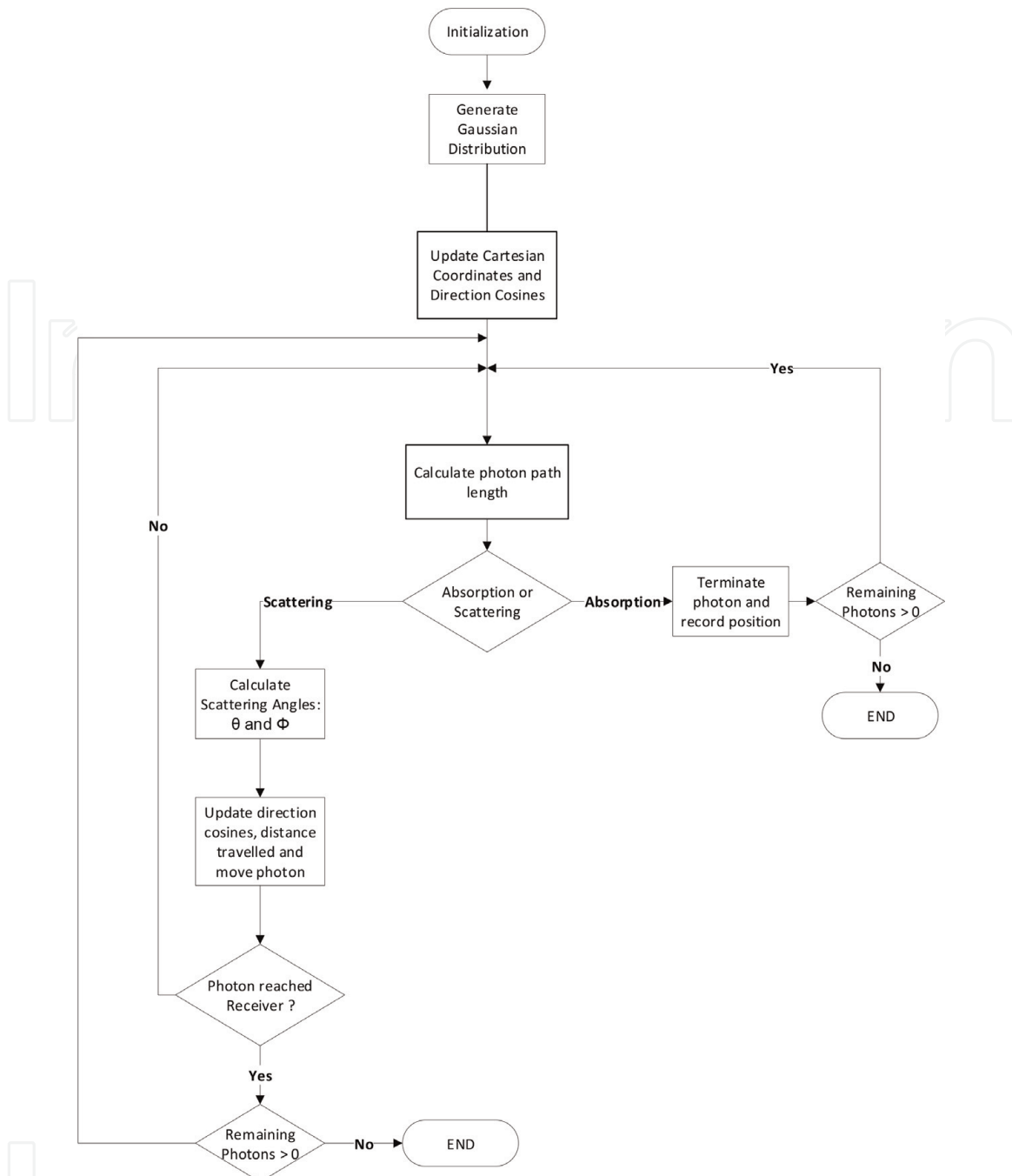


Figure 2.
Flow chart for the AR Monte Carlo simulation.

propagation than the AW method, where the simulated photons are energy packets rather than physical photons. In **Figure 2**, we show a flow chart of the Monte Carlo algorithm used in this simulation, each step in this chart will be explained with further detail in the following sections.

3.1 Photon path length

The photon path length, or step size, determines how far the photon will travel before encountering a water molecule or particle, meaning the distance a photon travels between an absorption event and a scattering event. The path length is directly related to the water type and, consequently, to the beam attenuation coefficient introduced in Section 2.1, and shown for several water types in **Table 1**.

As stated in [4], from the derivation of the RTE, the radiance in a particular direction (θ, ϕ) decays due to absorption and scattering according to:

$$\frac{dL(r, \theta, \phi)}{dr} = -c(r)L(r, \theta, \phi), \quad (31)$$

where $c(r)$ is the beam attenuation coefficient and r is the distance from a given starting point. Integrating Eq. (31), we have:

$$L(r, \theta, \phi) = L(0, \theta, \phi)e^{-\int_0^r c(r')dr'}, \quad (32)$$

putting it in terms of the photon path length $\tau = \int_0^r c(r')dr'$:

$$L(\tau, \theta, \phi) = L(0, \theta, \phi)e^{-\tau}. \quad (33)$$

The exponential decay of radiance can be explained in terms of the fate of individual photons if the probability of any photon being absorbed or scattered out of the beam between photon path lengths τ and $\tau + d\tau$ is:

$$p_T(\tau)d\tau = e^{-\tau}d\tau. \quad (34)$$

Mobley [3] notes that $p_T(\tau)$ satisfies the normalization condition for a probability density function (PDF):

$$\int_{x_1}^{x_2} p_x(x)dx = 1, \quad (35)$$

with $x_1 = 0$ and $x_2 = \infty$. The corresponding cumulative distribution function (CDF) is:

$$P_T(\tau) = 1 - e^{-\tau}, \quad (36)$$

selecting a random number q from a uniform distribution, $0 \leq q \leq 1$, and solving for τ , gives:

$$q = P_T(\tau) = 1 - e^{-\tau}, \quad (37)$$

$$\tau = -\ln(1 - q) = -\ln(q). \quad (38)$$

For homogenous water, where $c(r)$ does not depend on r , where $\tau = cr$, the photon will travel a geometric distance, r :

$$r = -\frac{1}{c}\ln(q). \quad (39)$$

3.2 Absorption events and scattering angles

Recalling that the photon path length, or step size, is the geometric distance a photon will travel between a scattering event and an absorption event, after determining the distance the photon will travel from origin, one must decide if the next interaction will be an absorption or a scattering event. For this, we recall the definition of the single scattering albedo, ω_o , that is the ratio between the scattering and the absorption coefficients. The single scattering albedo is referred sometimes as the probability of photon survival, because this ratio is the probability that the photon will undergo scattering instead of absorption. As we have mentioned before, in this Monte Carlo simulation, we used the AR method and to numerically implement this, we must select again a random number from a uniform distribution, $0 \leq q \leq 1$, to determine which event will take place:

$$\text{event} = \begin{cases} \text{absorption, for } q \leq \omega_o \\ \text{scattering, for } q > \omega_o \end{cases} \quad (40)$$

From this description, one may clearly see where the name ‘‘Albedo-Rejection’’ comes from: if the photon is absorbed, it must be terminated, and its position is recorded for further analysis; if the photon was scattered, the scattering angles must be calculated, and its direction of propagation is updated.

3.2.1 The Henyey-Greenstein phase function

Unlike the FSO channel, in an underwater environment, the photons will encounter a much larger number of particles, and thus multiple scattering events will play a more important role in the received optical power, when compared to other optical wireless communication channels.

One of the models proposed to describe the SPF is the Henyey-Greenstein phase function (HG) [12, 17, 18]. The HG was originally proposed by Henyey and Greenstein to describe the scattering of light by interstellar dust [19]:

$$\tilde{\beta}(g, \theta) = p_{HG} = \frac{1}{4\pi} \frac{1 - g^2}{(1 + g^2 - 2g\cos\theta)^{\frac{3}{2}}}, \quad (41)$$

where g is referred to as the anisotropy factor and is also the mean cosine of the scattering angle $\cos\theta$, which takes values between -1 and 1 . When $g = -1$, there is complete backscattering; for $g = 0$, the scattering is isotropic; and $g = 1$ gives complete forward scattering. Using $g = 0.924$, the HG is a good approximation for photon propagation in water and a good fit for the Petzold’s measurements.

To find the scattering angle, Eq. (41) must be solved for θ :

$$\cos\theta = \frac{1}{2g} \left\{ 1 + g^2 - \left(\frac{1 - g^2}{1 - g + 2gq} \right)^2 \right\}, \quad (42)$$

where q is a uniformly distributed random number between 0 and 1. The complete method for obtaining Eq. (42) may be found elsewhere [4].

Because scattering is a three-dimensional process, besides the polar angle (θ) defined above, the azimuthal (ϕ) angle must also be defined. For an unpolarized beam, the azimuthal angle has an equal probability to take any value between 0 and 2π [3]. Selecting again a random number, the azimuthal angle ϕ can be found by:

$$\phi = 2\pi q. \quad (43)$$

Comparing the HG phase function using Eq. (41) with the Petzold’s avg. Phase Function extracted from [3], we can see in **Figure 3** that the HG is indeed an adequate approximation for the SPF.

The HG phase function found great use in ocean optics simulations and is heavily used in Monte Carlo simulations and other relevant channel modeling works by several researchers [20].

3.2.2 The two-term Henyey-Greenstein phase function

Despite being an approximate fit, it can be seen in **Figure 4** that the HG phase function shows noticeable differences from the Petzold’s measurements for small angles, $\theta < 20^\circ$, and large angles $\theta > 150^\circ$.

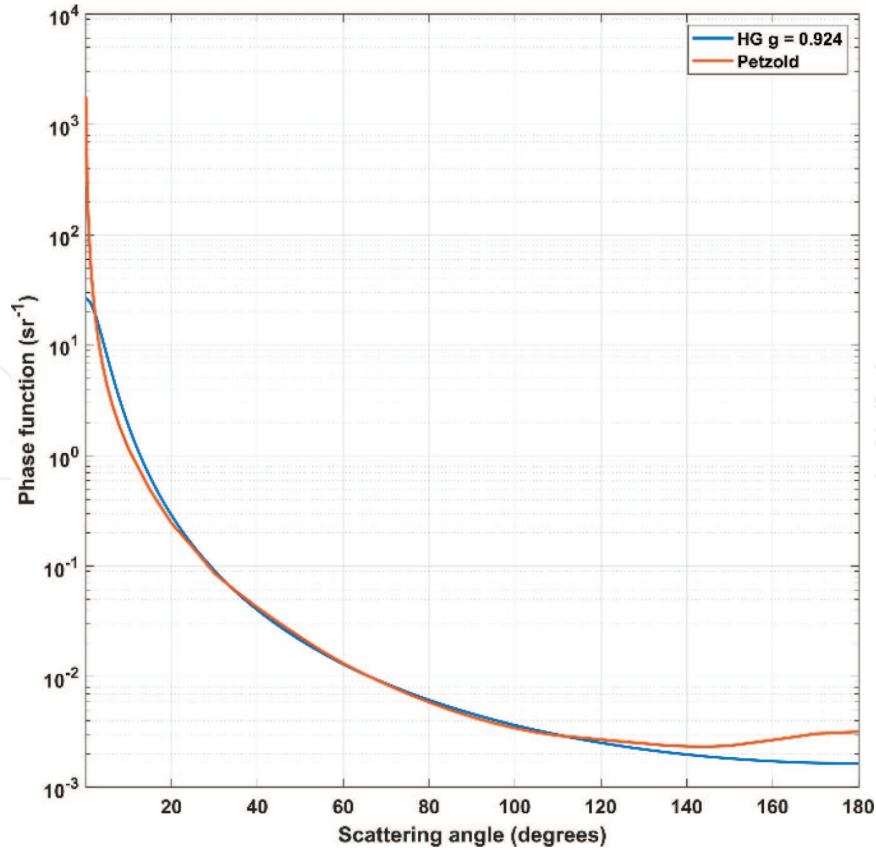


Figure 3.
 Comparison of the HG (blue) and the Petzold's average phase function (red).

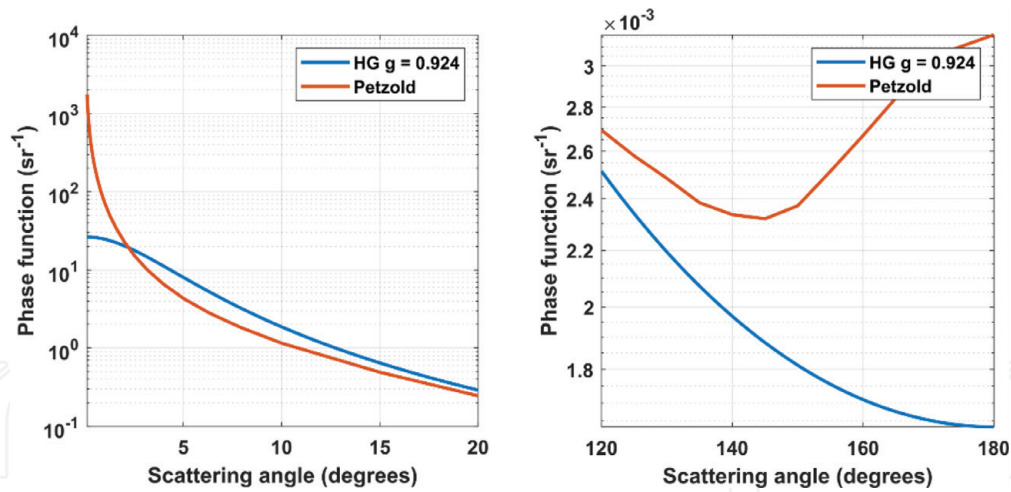


Figure 4.
 Comparison between the HG and Petzold's average phase function (left) and large (right) scattering angles.

To overcome this limitation, Haltrin [21] proposed a two-term Heyen-Greenstein (TTHG) phase function that matched Petzold's results better at small scattering angles and provided the elongation seen at larger angles. The TTHG is given by:

$$p_{TTHG}(\theta) = \alpha p_{HG}(\theta, g_1) + (1 - \alpha) p_{HG}(\theta, g_2), \quad (44)$$

where p_{HG} is the HG given by Eq. (41), α is a weighting factor, and g_1 is given a value near 1, which will make the TTHG increase more strongly at small angles. The parameter g_2 takes a negative value that will make the TTHG increase, as the angle θ approaches 180° . The values of α and g_2 may be calculated by:

$$g_2 = -0.3061446 + 1.000568g_1 - 0.01826332g_1^2 + 0.03643748g_1^3, \quad (45)$$

$$\alpha = \frac{g_2(1+g_2)}{(g_1+g_2)(1+g_2-g_1)}. \quad (46)$$

Haltrin also derived a relationship that relates the scattering coefficient, b , with the anisotropy factor, g_1 :

$$g_1 = 1 - \frac{0.001247}{b}. \quad (47)$$

After calculating the parameters using Eqs. (44)–(47) and computing the phase function for clear ocean waters with $b = 0.037 \text{ m}^{-1}$ using Eq. (44), we now compare the resulting phase function with the Petzold's phase function for clear ocean water. We can see from **Figure 5** that the TTHG represents a better approximation for small angles and presents the characteristic elongation at large angles. Despite that, in **Figure 6**, it can also be seen that the TTHG with $g_1 = 0.9943$ calculated using Eq. (47), differs greatly from the Petzold's average phase function data at intermediate angles, $20\text{--}110^\circ$. Comparing the results for the TTHG for different

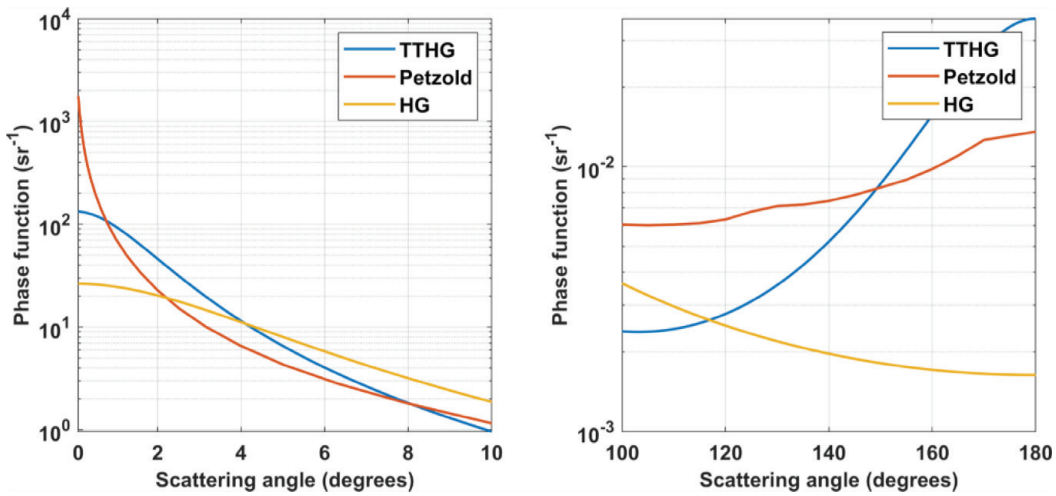


Figure 5. Comparison of small and large angles for two phase functions, TTHG and HG, with Petzold's data.

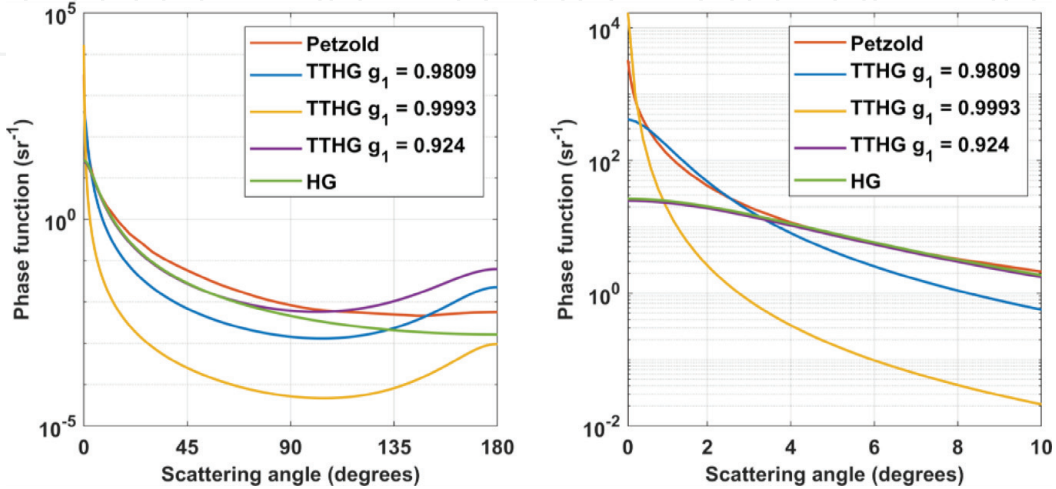


Figure 6. Comparison of scattering angles for two phase functions with Petzold's data for different values of the anisotropy factor g_1 .

values of g_1 against the Petzold's average phase function, we can see that $g_1 = 0.9809$, as proposed in [17], provides a good fit at small angles, where the phase function has its largest values, and maintains the elongation at larger angles characteristic of the Petzold's phase function.

3.2.3 Haltrin empirical phase function

Despite the attempts from several researchers of developing analytical phase functions for natural waters, we can see that the ones described in the previous sections do not provide a good fit over the total range of θ . In [22], Kirk computed a CDF from Petzold's data for θ over the range of $2.5\text{--}180^\circ$ in intervals of 5° . Unfortunately, his CDF did not include data for angles smaller than 2.5° , angles where, as seen before, a lot of scattering happens. In the results presented later in Section 4, we computed a CDF of Petzold's data over the whole range of scattering angles and used linear interpolation to compute θ for each random value selected. The accuracy obtained by this method comes with the drawback of increased computation time.

In [23], Haltrin developed an empirical fit using strong regression for all Petzold's measurements. One of the strongest points of this model is that the Phase Function may be obtained only by using the scattering coefficient and the single scattering albedo as inputs:

$$\beta(\theta) = \exp \left[\psi \left(1 + \sum_{n=1}^5 (-1)^n k_n \theta^{\left(\frac{n}{2}\right)} \right) \right], \quad (48)$$

and the scattering phase function:

$$p(\theta) = \frac{4\pi}{b} \exp \left[\psi \left(1 + \sum_{n=1}^5 (-1)^n k_n \theta^{\left(\frac{n}{2}\right)} \right) \right], \quad (49)$$

with:

$$\frac{1}{2} \int_0^\pi p(\theta) \sin(\theta) d\theta = 1, \quad (50)$$

where b is the scattering coefficient and the remaining parameters are:

$$\psi = 2.598 + 17.748\sqrt{b} - 16.722b + 5.932b\sqrt{b}, \quad (51)$$

$$k_1 = 1.188 - 0.688\omega_0, \quad (52)$$

$$k_2 = 0.1(3.07 - 1.90\omega_0), \quad (53)$$

$$k_3 = 0.01(4.58 - 3.02\omega_0), \quad (54)$$

$$k_4 = 0.001(3.24 - 2.25\omega_0), \quad (55)$$

$$k_5 = 0.0001(0.84 - 0.61\omega_0). \quad (56)$$

The strong regression given by these equations can be used for an empirical model for the phase functions. As seen from **Figure 7**, this model represents a better fit to the Petzold's measurements than the phase functions presented before, especially in the regions where the phase function is the strongest.

In our simulations, we found that when comparing the CDF computed by directly interpolating the Petzold's measurements, the CDF computed from the empirical phase function showed some divergence. Our CDF showed that for

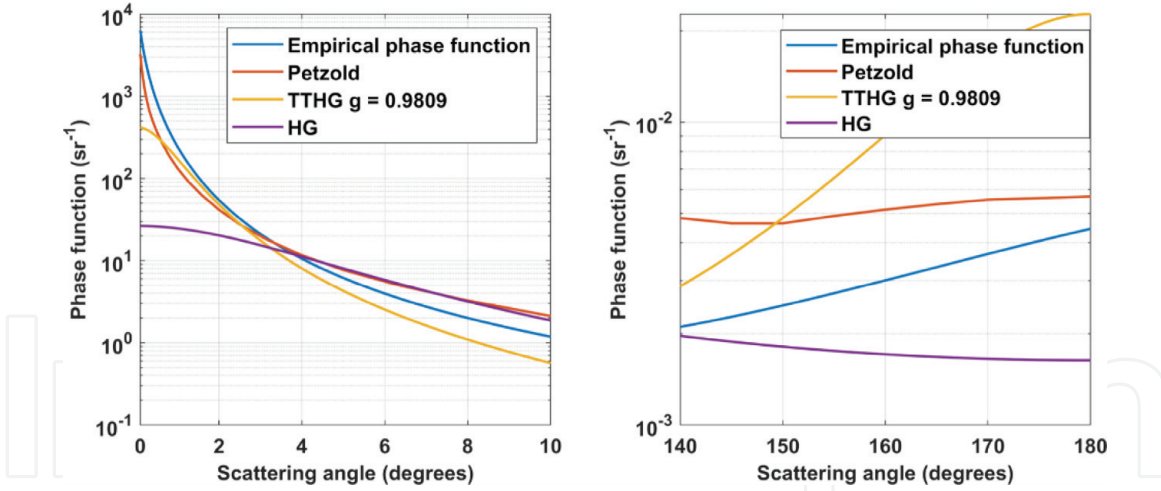


Figure 7.

Comparison of the empirical phase function, the TTHG and HG, against the Petzold's measurements for small and large angles.

harbor waters with $b = 1.8241$ and $\omega_0 = 0.83$, $P(\theta \leq 10^\circ) = 0.64$; while in the empirical phase function, we found $P(\theta \leq 10^\circ) = 0.84$.

The above presented divergence resulted in a small difference in the final received power; however, the empirical phase function largely overestimated the channel bandwidth, especially in harbor waters. This is due to the smaller scattering angles generated by this empirical phase function, causing the photons to travel in a straighter line when compared to the case of scattering with the CDF computed from Petzold's data.

3.2.4 The Fournier-Forand phase function

As seen the previous sections, several analytical and empirical formulae were used as empirical fits for ocean waters but none, specially the analytical ones provide a perfect fit for all scattering angles.

In [24], Fournier and Forand derived an analytic expression for the phase function of a set of particles that have a hyperbolic particle size distribution, with each particle scattering according to the anomalous diffraction theory. The Fournier-Forand (FF) phase function is given by:

$$\begin{aligned} \tilde{\beta}_{FF}(\theta) = & \frac{1}{4\pi(1-\delta)^2\delta^v} \left\{ [v(1-\delta) - (1-\delta^v)] + [\delta(1-\delta^v) - v(1-\delta)] \sin^{-2}\left(\frac{\theta}{2}\right) \right\} \\ & + \frac{1-\delta_{180}^v}{16\pi(\delta_{180}-1)\delta_{180}^v} (3\cos^2\theta - 1), \end{aligned} \quad (57)$$

where

$$v = \frac{3-\mu}{2}, \quad (58)$$

$$\delta = \frac{4}{3(n-1)^2} \sin^2\left(\frac{\theta}{2}\right). \quad (59)$$

Being n in Eq. (59) the real index of refraction of the particles, μ in Eq. (58) the slope parameter of the hyperbolic distribution, and δ_{180} in Eq. (57) is δ evaluated at $\theta = 180^\circ$.

It can be seen in [25] that with $n = 1.16$ and $\mu = 3.4586$, the FF phase function gives a good fit to the average Petzold phase function over all scattering angles. This comparison is shown in **Figure 8**.

When comparing the CDF computed from the FF phase function and the CDF from Petzold's data for harbor waters, we get very close probabilities over all scattering angles.

3.2.5 Sahu and Shanmugam (SS) phase function with flat back approximation

In [25], a semi-analytical model for a phase function was proposed by Sahu and Shanmugam (SS). The SS phase function predicts the light scattering properties for all forward angles, namely $0^\circ \leq \theta \leq 90^\circ$ as function of the real index of refraction and the slope parameter of the hyperbolic distribution. The phase function was divided in two parts, one from 0.1 to 5° and the other from 5 to 90° . The authors state that this division was necessary, since the phase function is highly nonlinear with a change of slope around 5° . This phase function is given by:

$$\log(\tilde{\beta}(\theta)) = \begin{cases} P_1(\ln(\theta))^2 + P_2(\ln(\theta)) + P_3 & 0.1^\circ \leq \theta \leq 5^\circ \\ P_1(\ln(\theta))^3 + P_2(\ln(\theta))^2 + P_3(\ln(\theta)) + P_4 & 5^\circ \leq \theta \leq 90^\circ \end{cases} \quad (60)$$

where

$$P_m = a_m e^{-x} + b_m(x) + c_m, \quad (61)$$

$$a_m = \frac{d_m}{y^2} + e_m \sin(4\pi y) + f_m y + g_m, \quad (62)$$

$$b_m = \frac{h_m}{y^2} + i_m \sin(4\pi y) + j_m y + k_m, \quad (63)$$

$$c_m = \frac{l_m}{y^2} + o_m \sin(4\pi y) + p_m y + q_m, \quad (64)$$

$$x = \mu - 3, \quad (65)$$

$$y = n - 1, \quad (66)$$

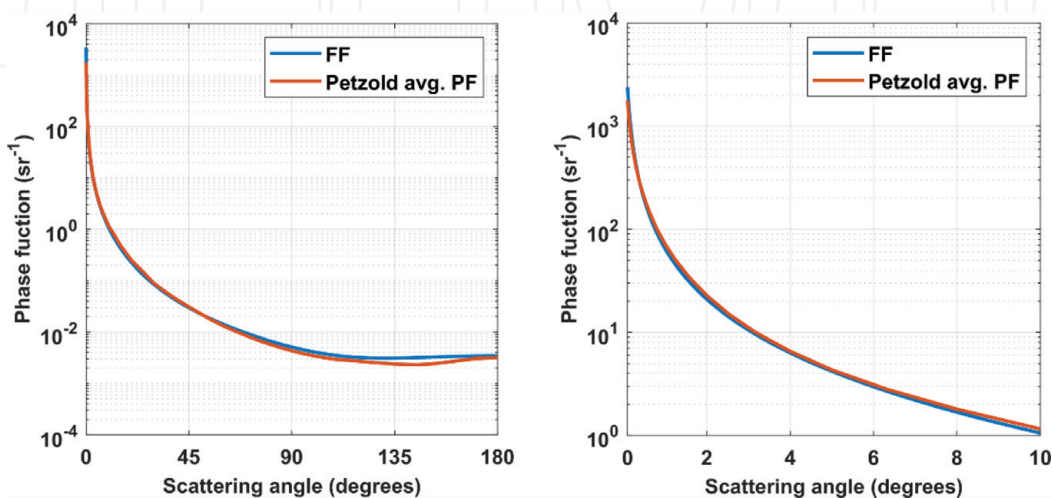


Figure 8.
 Comparison of the FF and the Petzold average phase function over all scattering angles and for small scattering angles.

with $m = 1, 2, 3$ for $0.1^\circ \leq \theta \leq 5^\circ$ and $m = 1, 2, 3, 4$ for $5^\circ \leq \theta \leq 90^\circ$. The values for the regression coefficients $d_m, e_m, f_m, g_m, h_m, i_m, j_m, k_m, l_m, p_m$, and q_m may be found in [26] and are not shown here for brevity.

Sahu found, in his most recent works [14, 26], that the set of values, $n = 1.16$ and $\mu = 3.4319$ gives the best fit to Petzold average phase function. Using Eqs. (60)–(66) and with the values mentioned above for n and μ , we compared the obtained values with the Petzold average phase function and found that it indeed provides an excellent fit at all scattering angles, but specially at small angles where most of the scattering will happen. Results for both parts of the phase function, 0.1 – 5° and 5 – 90° , are presented in **Figure 9**.

3.2.6 Computing phase functions for Monte Carlo simulations

As seen in [27], phase functions satisfy the normalization condition:

$$2\pi \int_0^\pi \tilde{\beta}(\theta) \sin\theta d\theta = 1, \quad (67)$$

and to determine the polar scattering angle:

$$q = 2\pi \int_0^\theta \tilde{\beta}(\theta) \sin\theta d\theta, \quad (68)$$

where q is a uniformly distributed random number between 0 and 1.

However, given the shape of most phase functions, it is more efficient [27] to use the equation for the phase function to build up a table of θ vs. $\tilde{\beta}(\theta)$, compute a CDF making use of the normalization condition, and then interpolate into the CDF the value of θ for each random number, q , drawn. As seen in Section 3.2.3, Kirk [22] computed a CDF for Petzold's measurements in San Diego Harbor for angles between 2.5 and 177.5° in intervals of 5° .

For the results presented in **Table 2**, we computed a CDF directly from Petzold average phase function extracted from [3] and used the same method described in [27] to obtain values for all angles between 0 and 90° . We chose to proceed with numerical integration for this range, and not from 0 to 180° , because as mentioned in Section 3.2.4, the SS phase function provides values only for forward scattering angles.

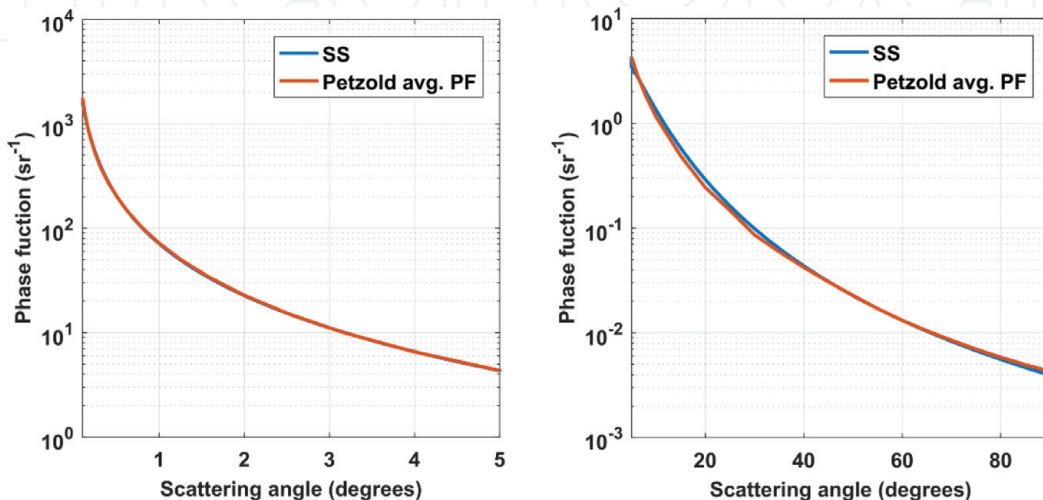


Figure 9. Comparison between the SS and the Petzold average phase function over the forward scattering angles.

θ (°)	$P(\theta_{\text{PETZ}})$	$P(\theta_{\text{FF}})$	$P(\theta_{\text{SS}})$	$P(\theta_{\text{TTHG}})$
0.126	0.009094	0.012355	0.004059	0.002382
0.2	0.031941	0.041314	0.025992	0.011982
0.251	0.046044	0.057930	0.039860	0.020878
0.316	0.062621	0.076605	0.056320	0.034634
0.398	0.081934	0.097344	0.075422	0.055321
0.501	0.104274	0.120254	0.097285	0.085451
0.631	0.129946	0.145647	0.122155	0.127856
0.794	0.158838	0.173561	0.149991	0.184165
1	0.191217	0.204415	0.181067	0.254854
2.512	0.352290	0.358677	0.335353	0.596932
5.012	0.498215	0.505639	0.472517	0.788187
10	0.659192	0.665537	0.630018	0.897428
30	0.891501	0.882151	0.892093	0.974829
50	0.958125	0.951993	0.960280	0.989702
70	0.986110	0.983167	0.987188	0.996168
80	0.994130	0.992771	0.994681	0.998674
85	0.997280	0.996631	0.997562	0.999169
90	1	1	1	1

Table 2.
 Computed CDF for selected phase functions.

In **Table 2** and **Figures 10** and **11**, we compare the CDF obtained for three phase functions, the SS, FF, and the TTHG with $g = 0.9809$ against the CDF for Petzold's average phase function. In **Figure 11**, we show the abscissa in logarithmic scale for a better visualization of the differences between phase functions for small values of θ .

In this table, we can see that both the FF and SS phase functions are a great approximation for the Petzold's average phase function, while the TTHG heavily overestimates the amount of scattering up to 10° and underestimates the amount of scattering in intermediate angles, i.e., between 30° and 80° . As one may expect, the effects of those deviations will be larger for waters where scattering is the main attenuation factor.

3.3 Temporal dispersion and the underwater channel bandwidth

3.3.1 Temporal dispersion

One of the most useful information regarding the underwater channel that may be provided by the Monte Carlo simulation, which is unavailable in most simple models like the Beer law, is the channel temporal dispersion. As seen before in this chapter, seawater is a dispersive medium in which light will suffer the effect of multiple scattering events. Scattering will cause the photons to arrive at the receiver at different time intervals causing temporal dispersion and a penalty in the channel bandwidth. In recent years, several researchers employed the double gamma functions to model the impulse response in underwater channels [15, 28]. Despite the accuracy of the double gamma function models, we find that the method described

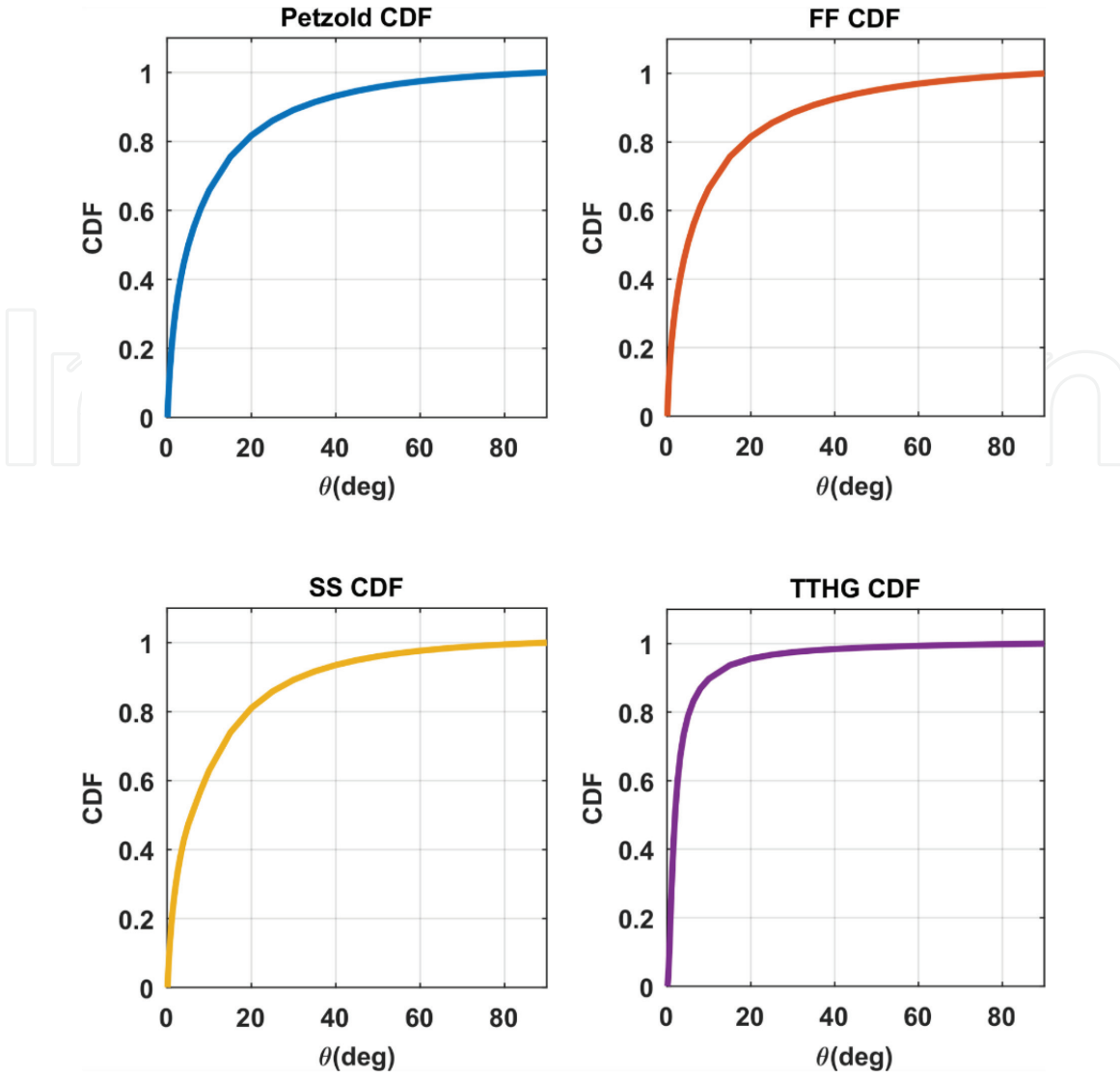


Figure 10.
CDF comparison for selected phase functions.

below consists in a simpler method by means of tracking the individual time of propagation of each photon.

By tracking the propagation distance of each photon (d_{prop}), the time of propagation (TOP), may be estimated by:

$$t_{op} = \frac{d_{prop}}{c_o}, \quad (69)$$

where c_o is the speed of light in the water given by:

$$c_o = \frac{c_{vacuum}}{n_{water}}, \quad (70)$$

with the index of refraction of sea water at 20°C and $\lambda = 500$ nm being $n_{water} = 1.34295$ [3].

For a better visualization of the impulse response, the time delay may be normalized by the straight-line distance, or direct distance, from source to the receiver using:

$$t_{delay} = t_{op} - t_{direct}. \quad (71)$$

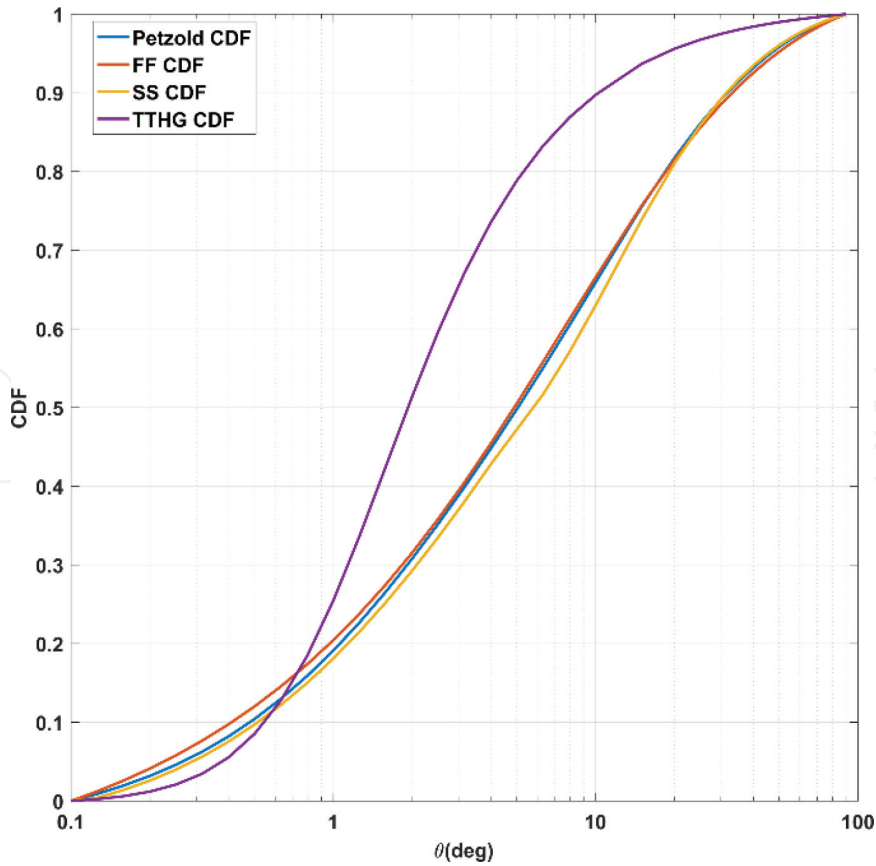


Figure 11.
 Log-linear plot of selected phase functions.

Making a histogram of the received photons and distributing the received intensity in time slots defined as the bin widths, one can get a result for the channel impulse response (CIR) of the underwater channel. The results will be presented in Section 4.

3.3.2 Underwater channel transfer function

When using laser diodes in UOWC systems, it is desirable to modulate the light source at very high frequencies. The CIR generated by the Monte Carlo simulation can be converted to frequency domain by the means of a Fourier Transform algorithm, from which we can obtain the channel transfer function.

Given that the impulse response is approximated by a discrete histogram of the time of arrival, it can be transformed to a frequency response, as proposed in [18, 19] by means of a discrete Fourier Transform (DFT), with the usual definition:

$$F[n] = \text{DFT}[CIR] = \sum_{k=0}^{N-1} t_{\text{delay}}[k] e^{-j\frac{2\pi}{N}nk}, \quad (72)$$

To numerically implement this, the fast Fourier transform (FFT) algorithm can be used to convert the t_{delay} data into the frequency domain:

$$F(f) = \text{abs}(\text{fft}(t_{\text{delay}}(t)dt)), \quad (73)$$

where dt is the time step, or bin width, used when making the histogram of the time delay data.

As expected, due to Nyquist sampling theorem, the maximum frequency that can be approximated in the frequency domain will be related to the time step by:

$$f_{max} = \frac{1}{2t_{step}}. \quad (74)$$

4. Simulation

In this section, we will provide some simulation results for several emitter parameters, underwater conditions, and different phase functions.

In the first part, we will simulate the received optical power for clear and coastal waters for different beam divergence values and compare it with the popular Beer-Lambert law. It can be seen in [14] that in these water conditions, the delay spread is so small that they can be considered as a nondispersive medium even for high data rate communications, and for this reason the channel impulse response (CIR) will be studied only for conditions where the medium is dispersive.

In the second part, we will study the effect of different phase functions in Harbor waters with a perfectly collimated beam. We believe that this is an interesting approach since in these waters', due to the higher scattering coefficient b , scattering will be a much larger factor and the amount of scattering that occurs at a given angle is an important factor for the received optical power and the delay spread. We will also provide numerical results for the CIR and an estimative for the 3-dB underwater channel bandwidth. The simulation parameters for Sections 4.1 and 4.2 are listed in **Tables 3** and **4**, respectively.

Parameter	Value
Simulated beam	Gaussian beam
Beam divergence at $1/e^2$	0, 10, 20 and 30 mrad
Beam width	1 mm
Receiver diameter	0.1 m
Receiver FOV	180°
Photons per simulation	100×10^6
Phase function	Fournier-Forand

Table 3.
Simulation parameters for Section 4.1.

Parameter	Value
Simulated beam	Gaussian beam
Beam divergence at $1/e^2$	0
Beam width	1 mm
Receiver diameter	0.1 m
Receiver FOV	180°
Photons per simulation	100×10^6
Phase functions	Petzold average, FF, SS and HG $g = 0.924$

Table 4.
Simulation parameters for Section 4.2.

4.1 Clear and coastal waters

4.1.1 Simulation results

In **Figure 12**, we compare the received power for clear ocean waters with varying beam divergence parameters of 0, 10, 20, and 30 mrad for an emitted beam with a FWHM width of 1 mm. For the phase function, we used the FF, since, as seen in Section 3.2.4, it provides a good fit for Petzold's phase function. However, as mentioned in the "Introduction," when discussing simulation, the impact of different phase functions, especially those which are a good approximation for the Petzold's average phase function, is small for the clear and coastal waters due to the low contribution of scattered photons on the final received power.

Our simulation matches very well the Beer-Lambert law for the case of an emitted Gaussian beam with no divergence, since one of the main assumptions of the law is that the emitted beam is perfectly collimated, and as the beam divergence increases the power loss becomes more accentuated.

We note that for a beam with no divergence, after 10 m, the normalized received optical power would be 2.2×10^{-1} for a receiver aperture of 10 cm. Since the beam spread after a distance z can be calculated by:

$$w(z) = 2z \times \tan\left(\frac{\phi}{2}\right), \quad (75)$$

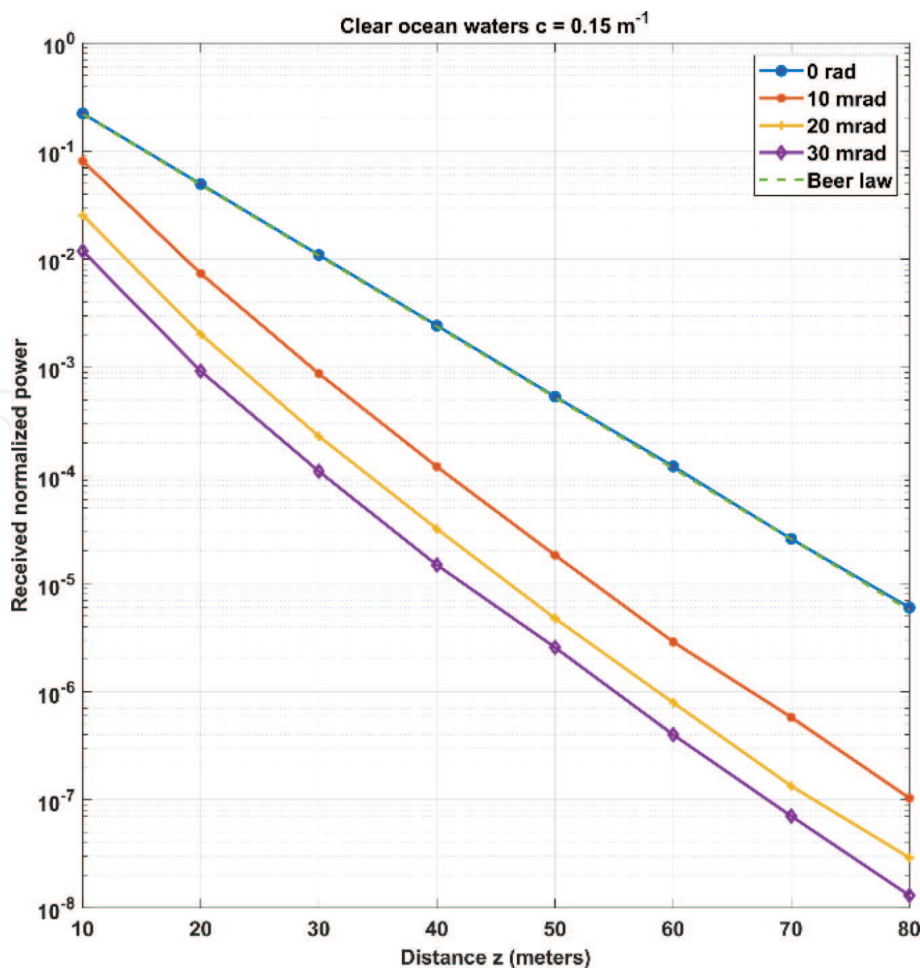


Figure 12. Received power for clear ocean waters with varying beam divergence parameter.

we may expect a beam spread of 20 cm after 10 m for a beam divergence of 10 mrad, potentially reducing by more than half the received optical power (due to the limited aperture of 10 cm). In fact, we can verify from **Figure 12** that the received power for a 10 mrad divergence is 8.1×10^{-2} , $\sim 40\%$ of the power when the beam was perfectly collimated. The power loss due to the beam spread can be further confirmed by analyzing the position of the received photons along the receiver axis of both configurations, the result being shown in **Figure 13**. From this figure, we can see that for the case of a beam with a divergence of 10 mrad, the photons are spread all over the receiver; while, in the case of a collimated beam, the photons are concentrated along the initial FWHM width of 1 mm.

To further illustrate this, we show, in **Figure 14**, the geometrical losses corresponding to beam divergence. Given that for a perfectly collimated beam in clear ocean waters, power loss is mainly due to absorption and the additional power loss solely due to the spread of the Gaussian beam.

For the case of coastal waters with $c = 0.4 m^{-1}$, we can see from **Figure 15** that the Beer law is still a good approximation for a collimated beam, but the law starts to underestimate the received optical power due to the increasing contribution of scattered photons to the final received power.

As was the case for clear waters, the received power drops considerably with an increase in the beam divergence parameter.

Here, the contribution of scattered photons to the final received power increases: after 20 m, 25% of the received power came from scattered photons, and after 30 m, this contribution is elevated to almost 30%. This is further illustrated in **Figure 16**, where the scattering histograms for $z = 20$ and $30 m$ are depicted, and in **Figure 17**, where we compare the received beam for the same distances in clear and coastal waters. For coastal waters, the effect of scattering is already noticeable at the distance of $z = 10 m$ and becomes more accentuated at $z = 20 m$.

Table 5 gives the received normalized power for clear ocean waters for various distances and beam divergence parameters. In the following table (**Table 6**), the same results are given for coastal waters.

4.2 Harbor waters

In this section, we compare the performance of different phase functions for Harbor I and Harbor II waters. First, we interpolated values for the Petzold average

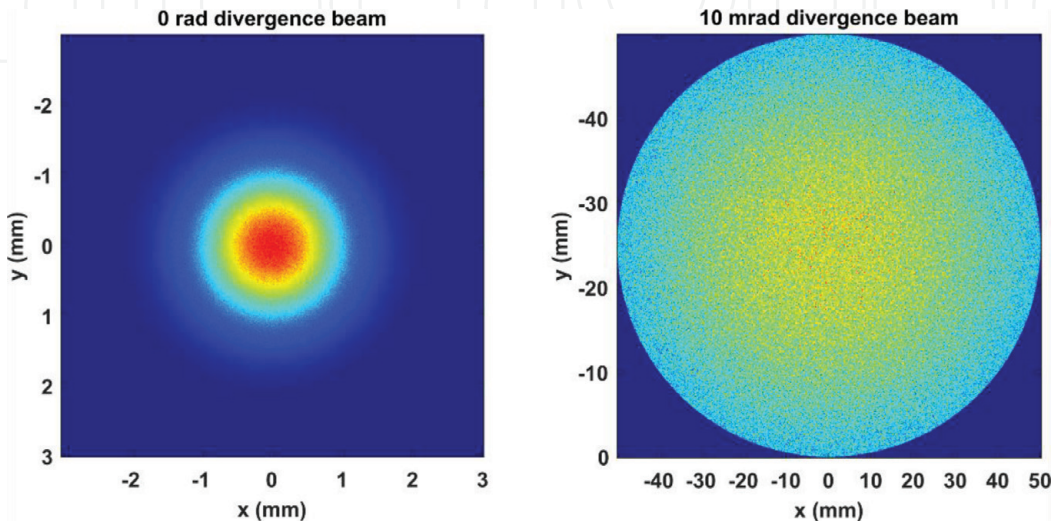


Figure 13. Beam spread in clear waters for a receiver located at $z = 10 m$. 0 rad (left) and 10 mrad (right).

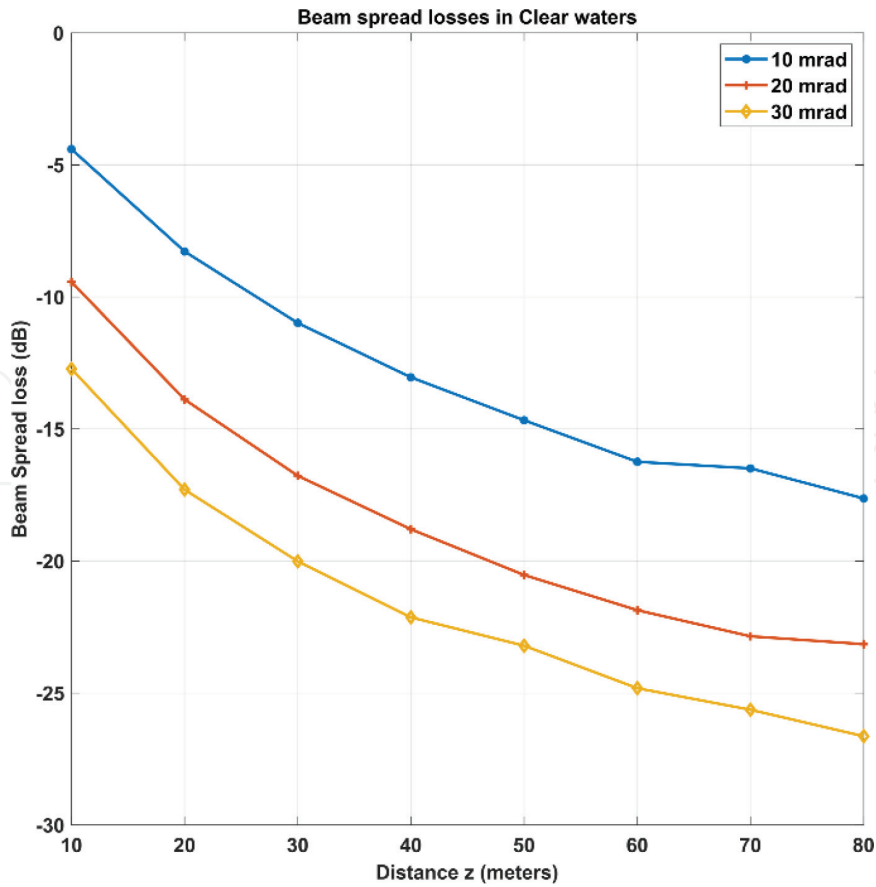


Figure 14.
Beam spread loss in clear waters for beam divergence parameters of 10, 20, and 30 mrad.

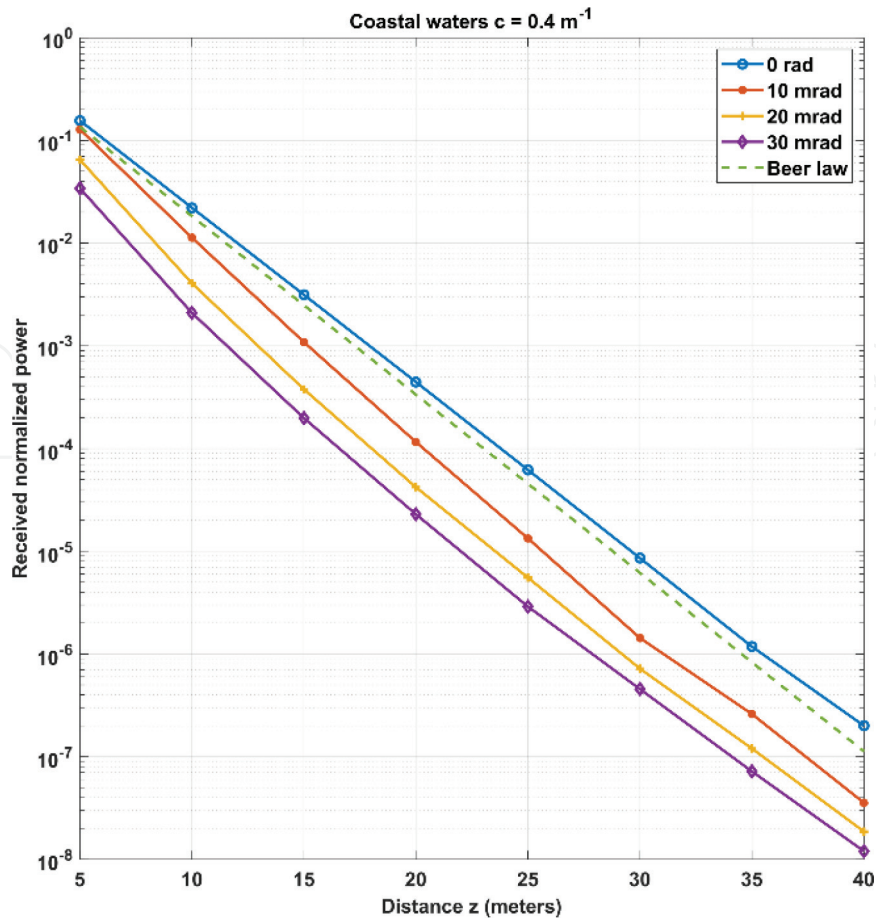


Figure 15.
Received power for coastal waters with varying beam divergence parameter.

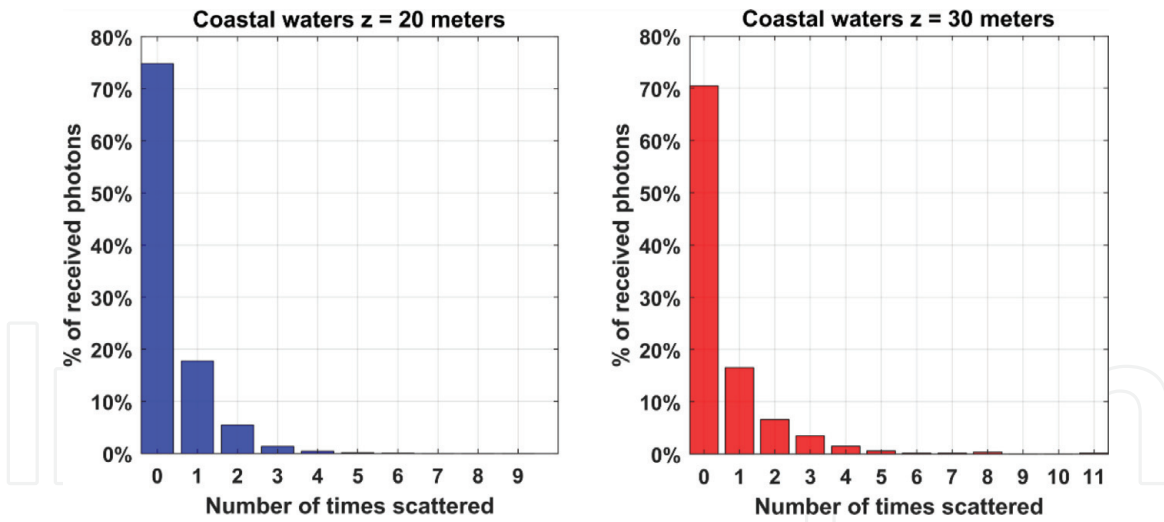


Figure 16. Scattering histogram for coastal waters with a perfectly collimated beam.

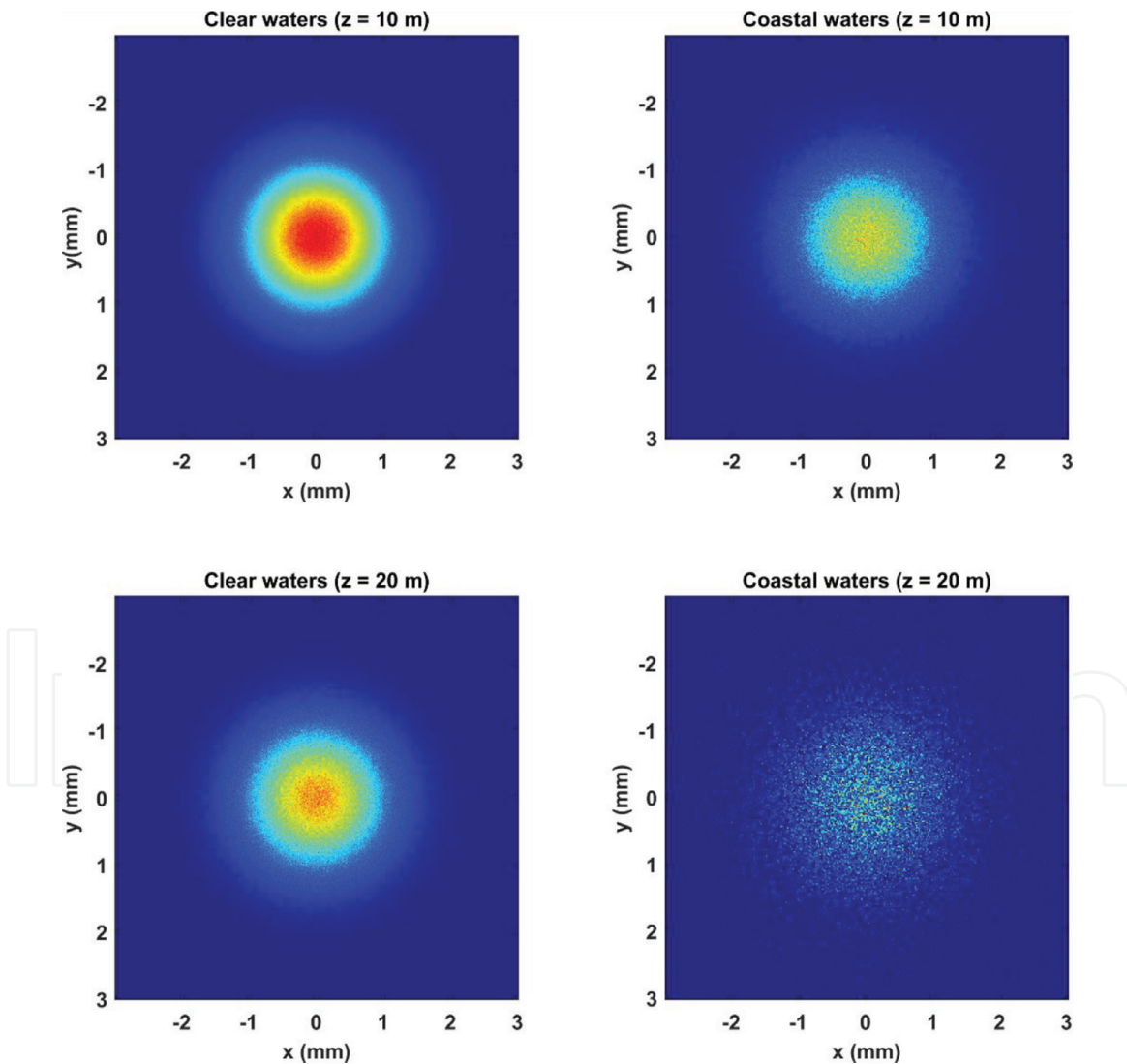


Figure 17. Received beams in clear and coastal waters.

phase function and considered, as in Section 3.2.5, the benchmark for all other phase functions. The amount of unique scattering angles generated by this interpolation was enough for each photon to have a unique scattering angle.

ϕ (mrad)	Distance			
	10 m	30 m	50 m	70 m
0	2.2×10^{-1}	1.09×10^{-2}	5.3×10^{-4}	2.6×10^{-5}
10	8.1×10^{-2}	8.7×10^{-4}	1.8×10^{-5}	5.8×10^{-7}
20	2.5×10^{-2}	2.3×10^{-4}	4.7×10^{-6}	1.3×10^{-7}
30	1.2×10^{-2}	1.1×10^{-4}	2.5×10^{-6}	7×10^{-8}

Table 5.
 Received power for clear ocean waters.

ϕ (mrad)	Distance			
	10 m	20 m	30 m	40 m
0	2.2×10^{-2}	4.4×10^{-4}	8.6×10^{-6}	1.1×10^{-7}
10	1.13×10^{-2}	1.15×10^{-4}	1.4×10^{-6}	3.6×10^{-8}
20	4.1×10^{-3}	4.2×10^{-5}	7.2×10^{-7}	1.9×10^{-8}
30	2.1×10^{-3}	2.3×10^{-5}	4.5×10^{-7}	1.2×10^{-8}

Table 6.
 Received power for coastal waters.

The SS phase function, seen in Section 3.2.4, predicts scattering for all forward angles. For the angles between 90° and 180° , we first calculated the backscattering ratio, as given in [25]:

$$B_p = P_1 \left(\frac{1}{(n-1)^2} \right)^{P_2}, \quad (76)$$

where

$$P_m = a_m(\mu - 3)^2 + b_m(\mu - 3) + c_m, \quad (77)$$

with the values for a_m , b_m , and c_m being the ones extracted from [25].

Using the values of $n = 1.16$ and $\mu = 3.4319$, the backscattering ratio $B_p = 0.0185$ is obtained, considering the scattering to be uniformly distributed over all angles above 90° , similarly to what was done in [14].

4.2.1 Simulation results

For the received optical power for Harbor I and Harbor II waters, we can see in **Figures 18** and **19** that the results obtained when using the FF and the SS phase functions are closely matched to the results obtained using the interpolated Petzold average PF, meanwhile the one term HG severely underestimates the received optical power. The main reason for this, as we have seen before, is that the HG is unable to reproduce the high amount of scattering that occur at small angles, as is the case in the Petzold average PF and matched by the other analyzed phase functions.

In **Figure 20**, the received beams are compared for Harbor I and Harbor II waters for $z = 4$ and 6 m. This figure clearly shows the higher scattering coefficient of Harbor II waters and how it impacts the received beam just after 4 m.

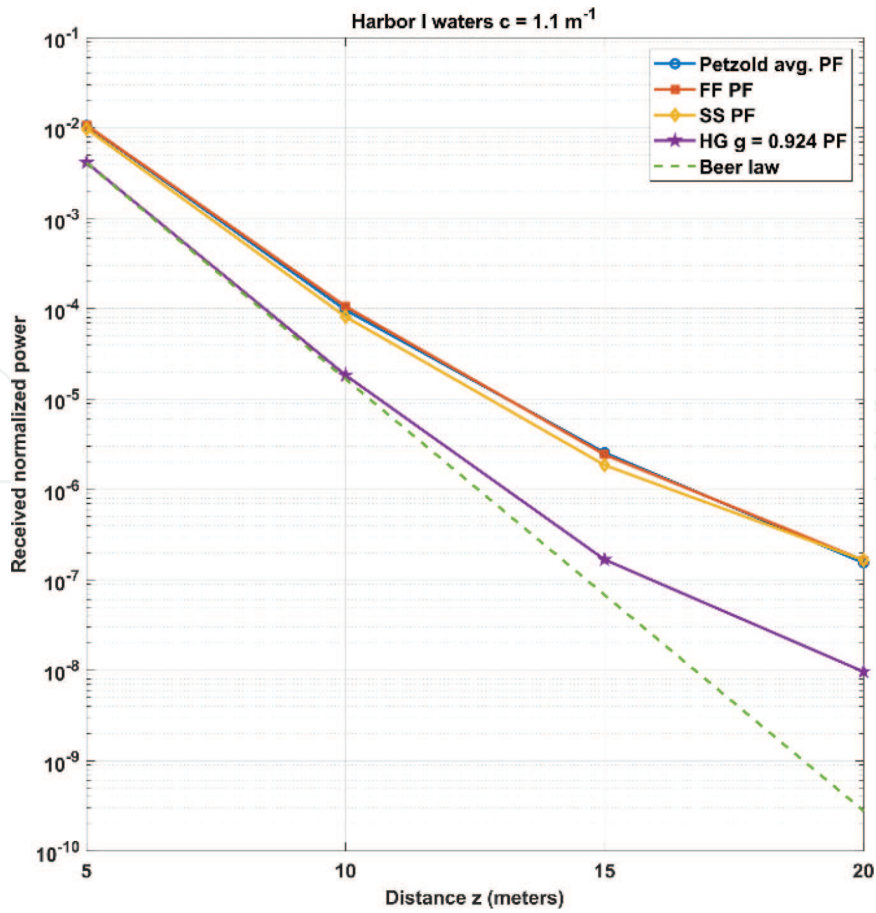


Figure 18. Received power for Harbor I waters for selected phase functions.

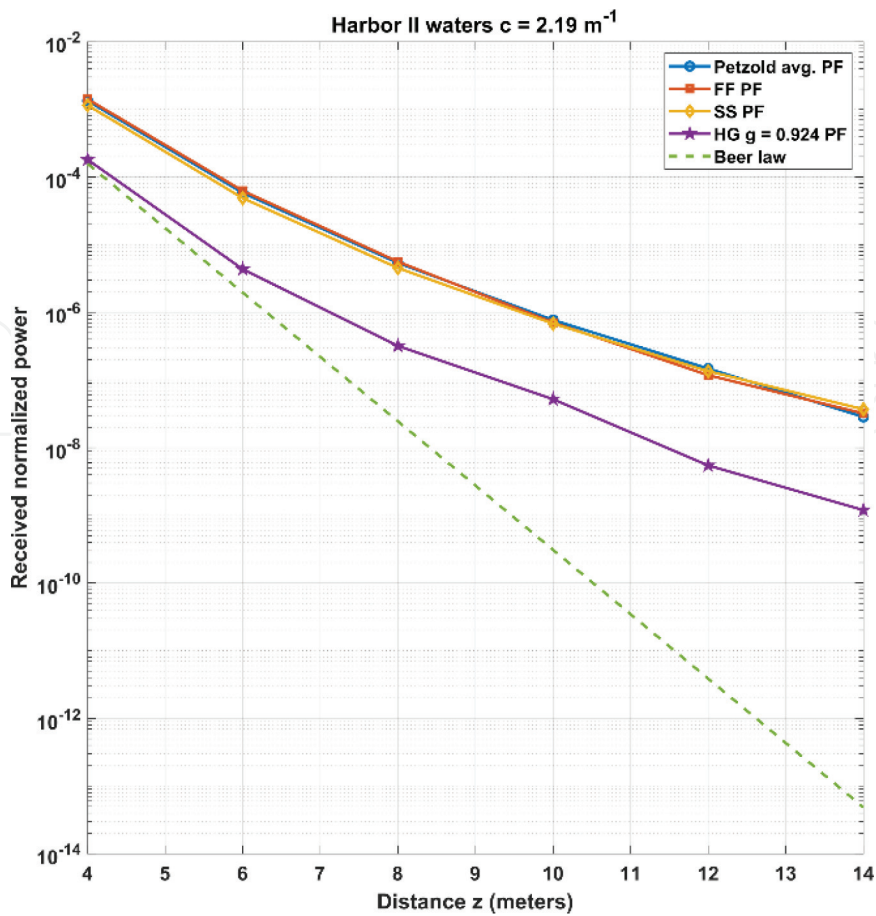


Figure 19. Receiver power for Harbor II waters for selected phase functions.

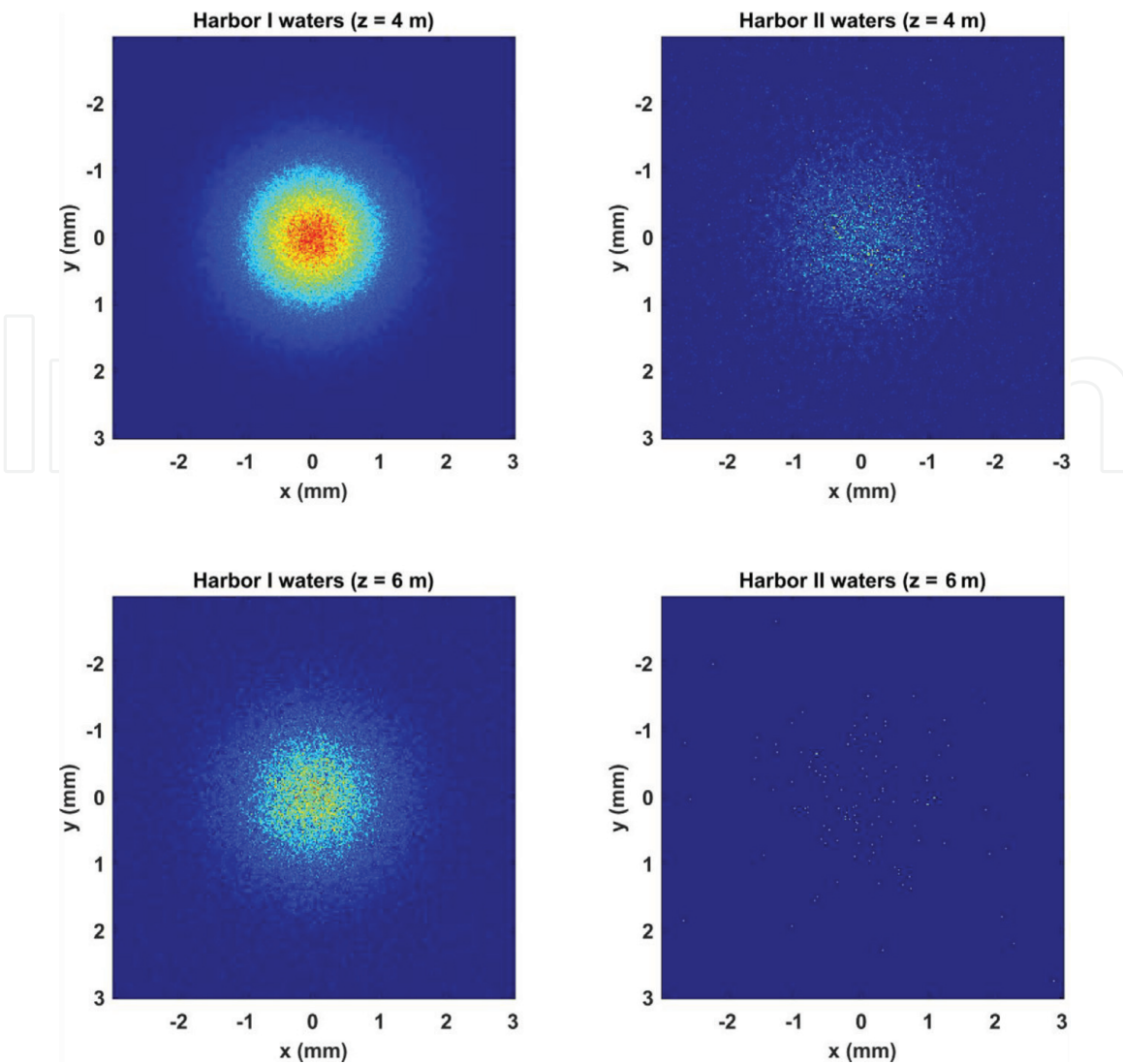


Figure 20.
 Received beams in Harbor I and Harbor II waters.

When looking at the CIR for Harbor I waters with $z = 15$ m, plotted in **Figure 21**, we can see that the results for the Petzold, FF, and the SS phase functions show similar behavior on the delay profile, while the CIR for the HG phase function shows a considerable number of delayed photons.

Figure 22 plots the transfer function of the channel, from which the 3-dB bandwidth can be extracted, for Harbor I waters corresponding to $z = 15$ and 20 m using the method described in Section 3.3.2. It is possible to verify from these results that the behavior of the SS phase function closely matches the one for the Petzold PF for both distances and the HG underestimates the bandwidth by a large margin in both scenarios. The FF phase function on the other hand, overestimates the bandwidth for the case $z = 15$ m. The 3-dB bandwidth is limited to ~ 300 and 90 MHz, for 15 and 20 m, respectively.

The same analysis is now applied to Harbor II waters. The impulse response is shown in **Figure 23**. The interpretation is that the HG phase function exhibits a response where the power is much more distributed over time when comparing to what is seen in the other phase functions where most of the power is located at the instant $t_{direct} = 44$ ns.

The effect of the delay spread is even more noticeable when we analyze the transfer function. In **Figure 24**, this analysis is done for $z = 10$ and 12 m, where we see that in these conditions, due to higher number of scattering events that each photon undergoes, the bandwidth is lower than what we found at Harbor I waters, even when considering smaller propagation distances. In this case, the phase

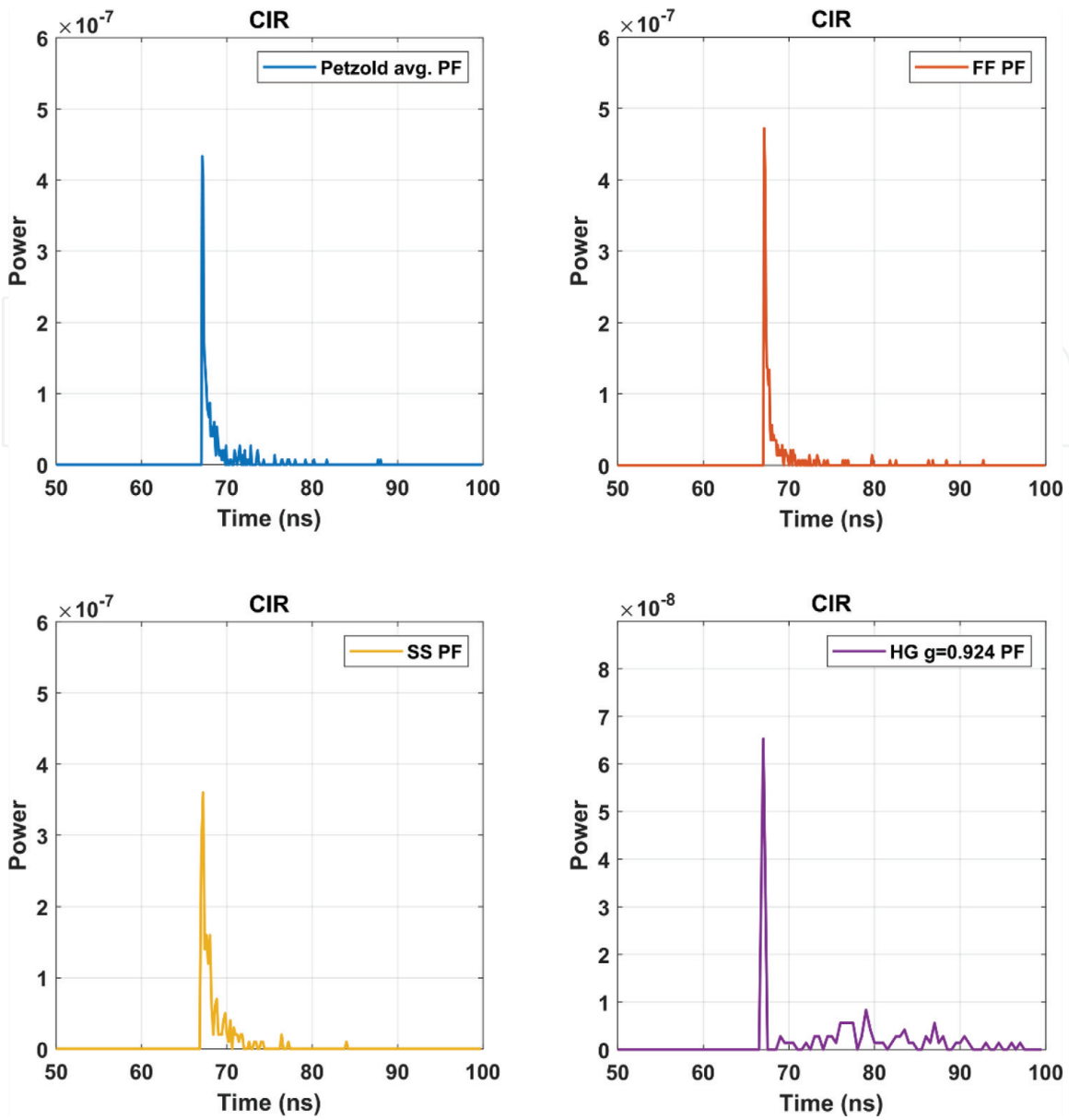


Figure 21. Channel impulse response for Harbor I waters with $z = 15$ m.

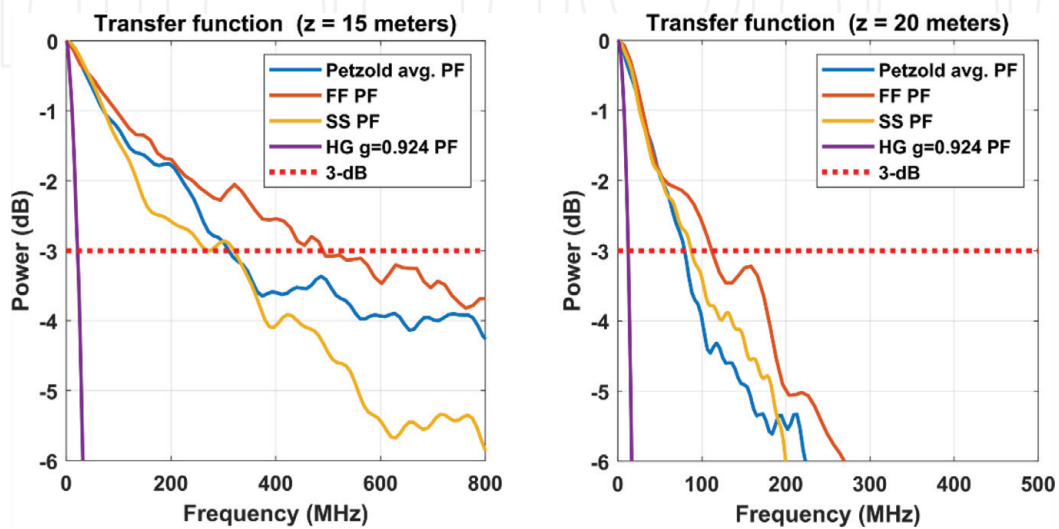


Figure 22. Transfer function for Harbor I waters. $z = 15$ and 20 m.

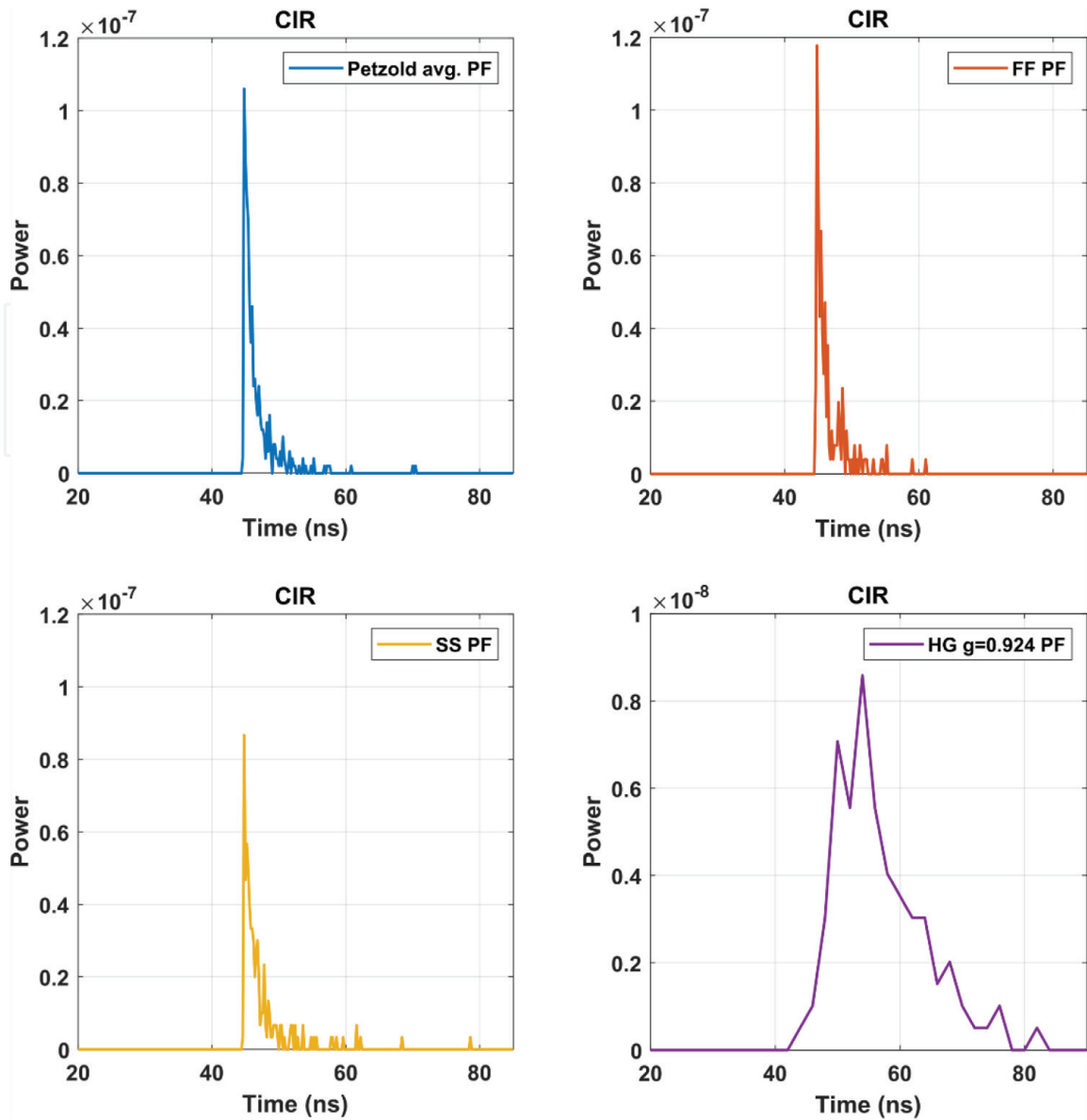


Figure 23.
 Channel impulse response for Harbor II waters with $z = 10$ m.

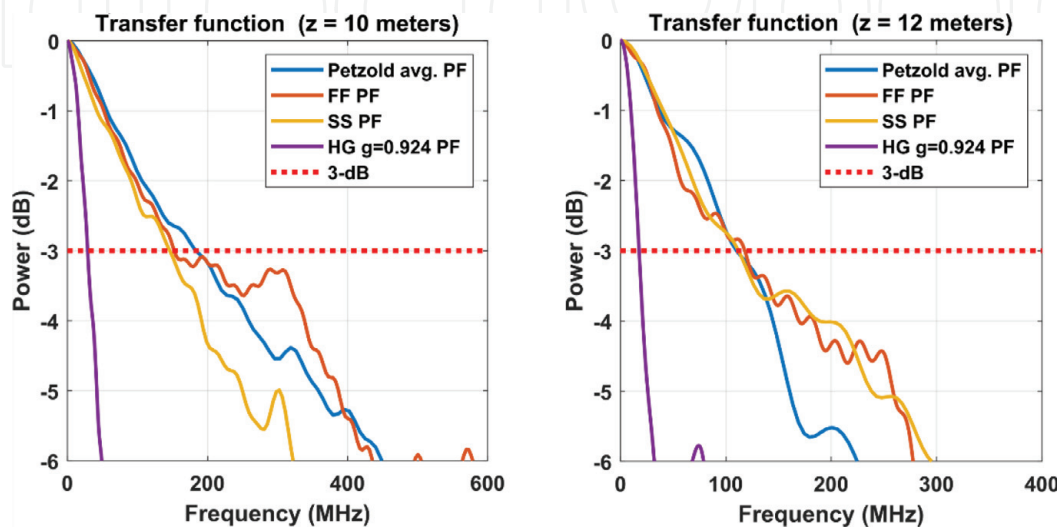


Figure 24.
 Transfer function for Harbor II waters. $z = 10$ and 12 m.

	Received power	τ_{RMS} (ns)	3-dB BW (MHz)
HI $z = 15$ m	2.6×10^{-6}	2.93	310
HI $z = 20$ m	1.8×10^{-7}	6.18	80
HII $z = 8$ m	5.4×10^{-6}	2.06	440
HII $z = 10$ m	7.7×10^{-7}	3.51	185
HII $z = 12$ m	1.5×10^{-7}	4.78	110
HII $z = 14$ m	2.8×10^{-8}	7.87	53

Table 7.

Results for received power, rms delay, and 3-dB BW for Harbor I and Harbor II waters.

functions FF and SS give similar results to the Petzold average PF, the bandwidth being limited to ~ 150 and 100 MHz, for distances of 10 and 12 m, respectively.

In the following table, **Table 7**, we summarize the most relevant numerical results for Harbor I and Harbor II waters as we did for the case of clear and coastal waters in Section 4.1. For brevity, we only show the results obtained using the Petzold average phase function; however, as noted in the results presented previously, one may expect similar numerical results when using the FF or the SS phase function as they predict scattering angles similar to those predicted by Petzold.

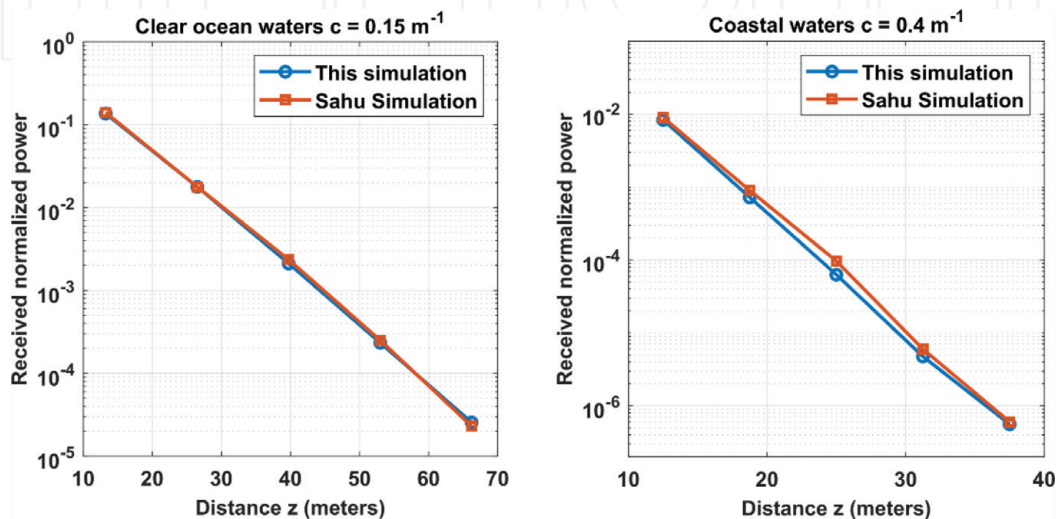
4.3 Validation of simulation results

For further validation of the simulation model, we compared the values obtained in our simulation with the ones obtained by Sahu in [14]. For this, we used the same parameters used in his simulations, a Gaussian beam profile with FWHM beam width of 2 mm, a beam divergence parameter of 1.5 mrad, and a receiver aperture of 10 cm.

The comparison for clear and coastal waters between our simulation and [14] is shown in **Figure 25**, and we can see that our simulation closely matches the results obtained by Sahu.

For Harbor waters, Sahu only considered Harbor II waters with $c = 2.19 \text{ m}^{-1}$, hence we could not compare the values we obtained for Harbor I waters with $c = 1.1 \text{ m}^{-1}$. The results are illustrated in **Figure 26**, where a good agreement is seen.

Furthermore, Sahu defined a delay spread quantity which is the time period over which the CIR falls to -20 dB below its peak. He provided numerical values for

**Figure 25.**

Comparison between this simulation model and [14].

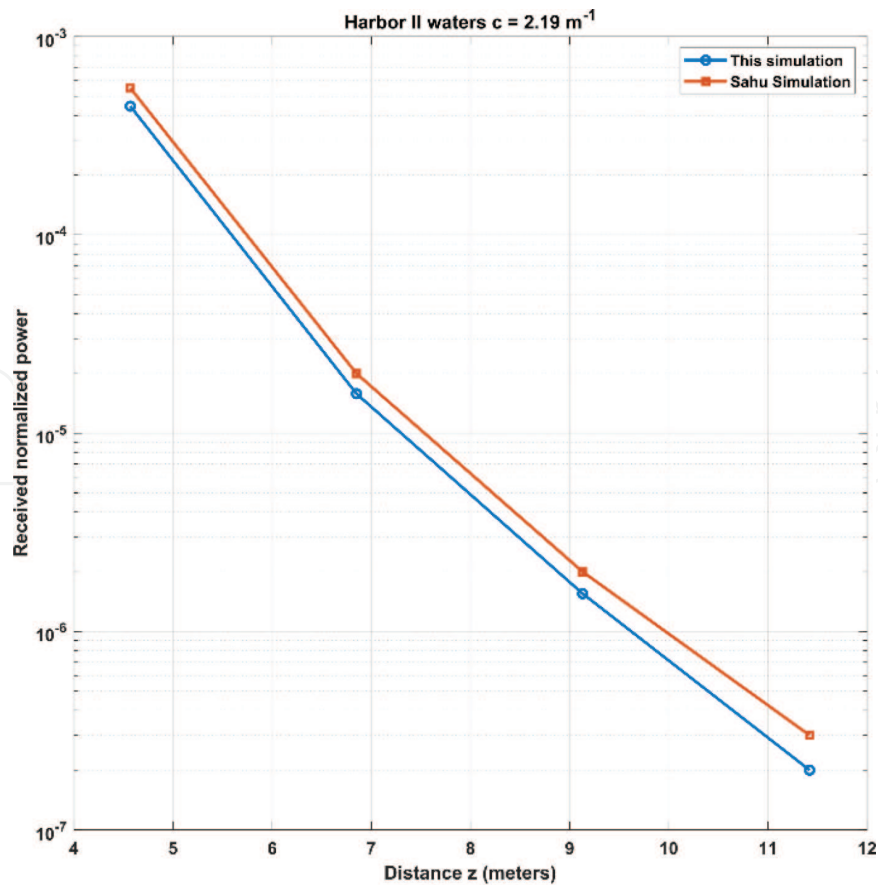


Figure 26.
 Comparison between this simulation model and [14].

different propagation distances and the comparison against his intercept points for these distances are depicted in **Figure 27**. The CIR in that figure is normalized by the straight-line time of propagation (t_{direct}) for a better visualization of the delay spread. The black line in the figure is the -20 dB intercept point as given in [14], and we can see that again the values obtained in the simulation are quite close to the ones obtained by Sahu, which validate the model proposed here.

5. Conclusion

In this chapter, a simple yet powerful tool for modeling the propagation of photons in an underwater channel is presented, which provides more accurate results than the conventional Beer-Lambert law. The algorithm presented here highlights the fundamental processes of absorption and scattering, hopefully helping the reader to better understand the physics of photon propagation in an underwater environment.

In the first part of the simulation, we showed how important the collimation of a beam is and how the beam spread can cause losses up to -13 dB even after only 10 m. It was also possible to verify that in clear waters, a good signal to noise ratio is achievable for several tens of meters in both clear and coastal waters.

In the second part of the simulation, the impact of the water turbidity on the underwater link was assessed, where it was concluded that increasing turbidity limits not only the received optical power, but also the maximum bandwidth of the channel. An adequate choice of phase function is important as simpler phase functions, such as the Henyey-Greenstein, may wrongly predict the numerical results in these conditions.

For the first time results for the received power, channel impulse response and 3-dB bandwidth are obtained from Monte Carlo RTE simulations for different phase functions. The SS and FF are compared with the Petzold average PF and results are shown to

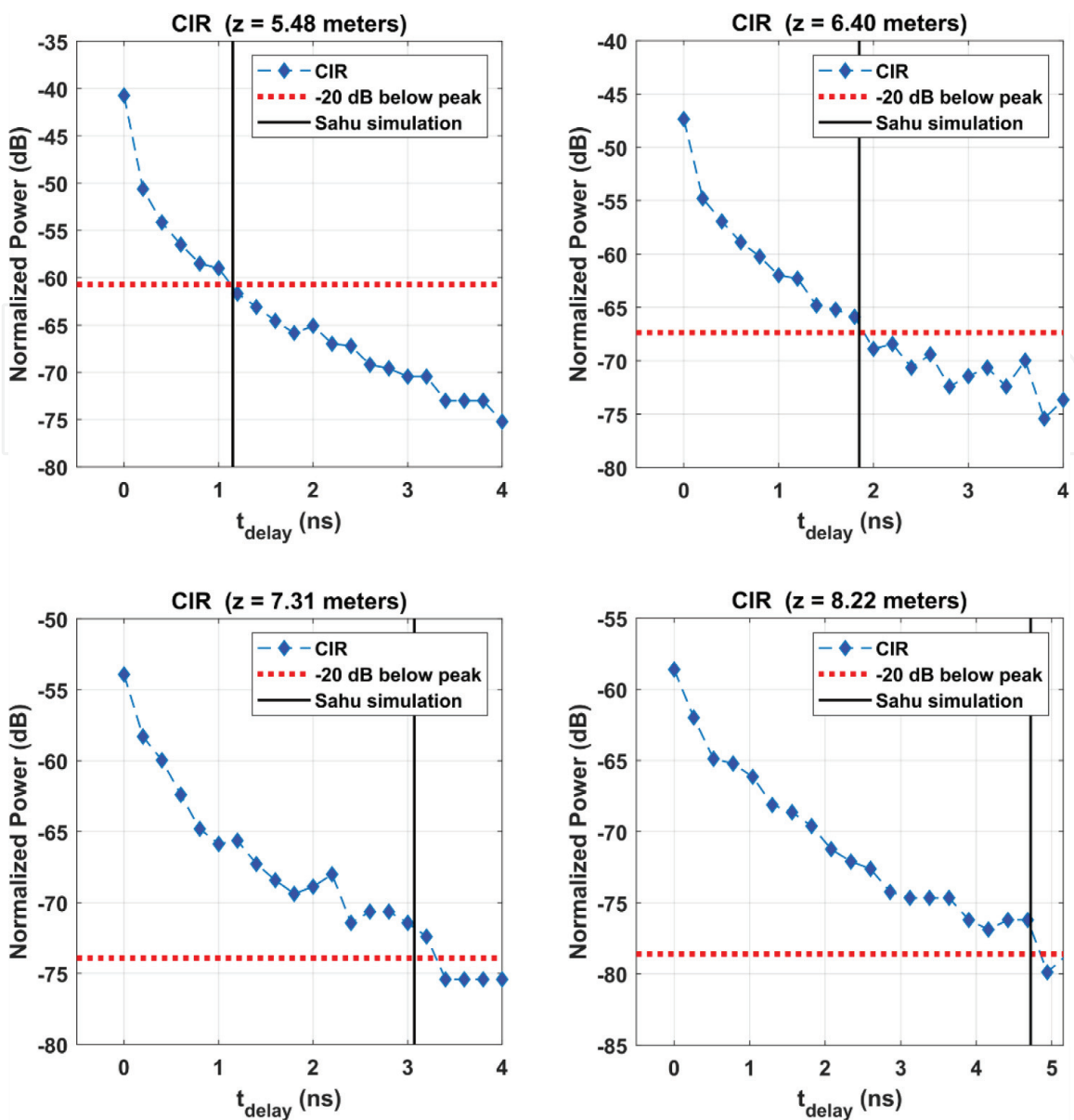


Figure 27. CIR for various distances in Harbor II waters, where the delay spread is highlighted.

agree well. Moreover, for validation purposes, our simulation results are further compared with those obtained by Sahu [14] and good agreement is shown to exist.

We believe that the approach presented here provides a general and flexible technique for numerically solving the radiative transfer equation, accessible to any reader with basic programming skills. Besides the conditions simulated in this chapter, the simulation program may be used to simulate innumerable other conditions, like misalignment between receiver and transmitter, smaller aperture sizes, limited FOVs, and other light sources other than Gaussian beams.

Acknowledgements

This work is financed by the ERDF—European Regional Development Fund through the Operational Programme for Competitiveness and Internationalisation—COMPETE 2020 Programme, and by National Funds through the FCT—Portuguese Foundation for Science and Technology, I.P., within project POCI-01-0145-FEDER-031971.

IntechOpen

Author details

Rafael M.G. Kraemer^{1,2}, Luís M. Pessoa² and Henrique M. Salgado^{1,2*}

1 Faculty of Engineering, University of Porto, Portugal

2 INESC TEC—INESC Technology and Science (Formerly INESC Porto), Porto, Portugal

*Address all correspondence to: henrique.salgado@inesctec.pt

IntechOpen

© 2019 The Author(s). Licensee IntechOpen. This chapter is distributed under the terms of the Creative Commons Attribution License (<http://creativecommons.org/licenses/by/3.0>), which permits unrestricted use, distribution, and reproduction in any medium, provided the original work is properly cited. 

References

- [1] Inherent Optical Properties. Ocean Optics Web Book [Online]. Available from: http://www.oceanopticsbook.info/view/overview_of_optical_oceanography/inherent_optical_properties [Accessed: 28 September 2018]
- [2] Zeng Z, Fu S, Zhang H, Dong Y, Cheng J. A survey of underwater optical wireless communications. *IEEE Communication Surveys and Tutorials*. 2017;**19**(1):204-238
- [3] Mobley CD. *Light and Water—Radiative Transfer in Natural Waters*. San Diego: Academic Press; 1994
- [4] Leathers RA, Downes TV, Davis CO, Mobley CD. *Monte Carlo Radiative Transfer Simulations for Ocean Optics: A Practical Guide*. Fort Belvoir, VA: Defense Technical Information Center; 2004
- [5] The Volume Scattering Function. Ocean Optics Web Book [Online]. Available from: http://www.oceanopticsbook.info/view/overview_of_optical_oceanography/the_volume_scattering_function [Accessed: 30 September 2018]
- [6] Petzold TJ. *Volume Scattering Functions for Selected Ocean Waters*. Fort Belvoir, VA: Defense Technical Information Center; 1972
- [7] Metropolis N, Ulam S. The Monte Carlo method. *Journal of the American Statistical Association*. 1949;**44**(247): 335-341
- [8] Computing and the Manhattan Project. Atomic Heritage Foundation [Online]. Available from: <https://www.atomicheritage.org/history/computing-and-manhattan-project> [Accessed: 22 October 2018]
- [9] Monte Carlo and the Bomb [Online]. Available from: <http://jmoses.co/2014/05/27/monte-carlo-and-the-bomb.html> [Accessed: 01 November 2018]
- [10] Sassaroli A, Martelli F. Equivalence of four Monte Carlo methods for photon migration in turbid media. *Journal of the Optical Society of America A*. 2012; **29**(10):2110
- [11] Cox WC, Jr. *Simulation, Modeling, and Design of Underwater Optical Communication Systems*. PhD Thesis, North Carolina State University; 2012
- [12] Gabriel C, Khalighi M-A, Bourennane S, Léon P, Rigaud V. Monte-Carlo-based channel characterization for underwater optical communication systems. *Journal of Optical Communications and Networking*. 2013;**5**(1):1
- [13] Li J. Monte Carlo study on pulse response of underwater optical channel. *Optical Engineering*. 2012;**51**(6):066001
- [14] Sahu SK, Shanmugam P. A theoretical study on the impact of particle scattering on the channel characteristics of underwater optical communication system. *Optics Communications*. 2018;**408**:3-14
- [15] Li Y, Leeson MS, Li X. Impulse response modeling for underwater optical wireless channels. *Applied Optics*. 2018;**57**(17):4815
- [16] Vadakke-Chanat S, Shanmugam P, Sundarabalan B. Monte Carlo simulations of the backscattering measurements for associated uncertainty. *Optics Express*. 2018;**26**(16):21258
- [17] Mobley CD, Sundman LK, Boss E. Phase function effects on oceanic light fields. *Applied Optics*. 2002;**41**(6):1035
- [18] Wang L, Jacques SL. MCML—Monte Carlo modeling of light transport in multi-layered tissues in standard C. 183. *Computer Methods and Programs in Biomedicine*. Boston, MA: Springer; 1995;**47**(2):131-146

[19] Henyey L, Greenstein J. Diffuse radiation in the galaxy. *Astrophysical Journal*. 1941;**93**:70-83

wireless optical communication links. *IEEE Transactions on Communications*. 2014;**62**(1):226-234

[20] Miramirkhani F, Uysal M. Visible light communication channel modeling for underwater environments with blocking and shadowing. *IEEE Access*. 2018;**6**:1082-1090

[21] Haltrin VI. One-parameter two-term Henyey-Greenstein phase function for light scattering in seawater. *Applied Optics*. 2002;**41**(6):1022

[22] Kirk JT. *Monte Carlo Procedure for Simulating the Penetration of Light into Natural Waters*. Australia: Commonwealth Scientific and Industrial Research Organization; 1981

[23] Haltrin VI. Theoretical and empirical phase functions for Monte Carlo calculations of light scattering in seawater. In: Presented at the Fourth International Conference on Remote Sensing for Marine and Coastal Environments. 1997;**17**:19

[24] Fournier GR, Luc Forand J. Analytic phase function for ocean water. *Proc. SPIE Ocean Optics XII*. 1994;**2258**:2258

[25] Sahu SK, Shanmugam P. Semi-analytical modeling and parameterization of particulates-in-water phase function for forward angles. *Optics Express*. 2015;**23**(17):22291

[26] Sahu SK, Shanmugam P. Scattering phase function for particulates-in-water: Modeling and validation. In: Presented at the SPIE Asia-Pacific Remote Sensing; New Delhi, India; 2016. p. 98821H

[27] Mobley CD et al. Comparison of numerical models for computing underwater light fields. *Applied Optics*. 1993;**32**(36):7484

[28] Tang S, Dong Y, Zhang X. Impulse response modeling for underwater