

We are IntechOpen, the world's leading publisher of Open Access books Built by scientists, for scientists

4,800

Open access books available

122,000

International authors and editors

135M

Downloads

Our authors are among the

154

Countries delivered to

TOP 1%

most cited scientists

12.2%

Contributors from top 500 universities



WEB OF SCIENCE™

Selection of our books indexed in the Book Citation Index
in Web of Science™ Core Collection (BKCI)

Interested in publishing with us?
Contact book.department@intechopen.com

Numbers displayed above are based on latest data collected.
For more information visit www.intechopen.com



Chapter

Binding of Chlorinated Phenylacrylonitriles to the Aryl Hydrocarbon Receptor: Computational Docking and Molecular Dynamics Simulations

*Stefan Paula, Jennifer R. Baker, Xiao Zhu
and Adam McCluskey*

Abstract

The development of ligands capable of binding to the aryl hydrocarbon receptor (AhR) and hijacking its signaling pathway is of potential use for the design of novel agents against breast cancer. To guide the synthesis of new compounds and characterize their binding to the AhR, we employed homology modeling, ligand docking, and molecular dynamics simulations. As there is currently no crystallographic information available for the structure of the AhR's ligand-binding PAS-B domain, a homology model was developed. The location of the binding site was identified by scanning the model for concave areas and comparing them to known ligand-binding sites in proteins related to the AhR, such as the CLOCK:BMAL1 transcriptional activator complex and the hypoxia-inducible factor-2 α (HIF-2 α). Docking of several chlorinated phenylacrylonitriles was performed with the modeling suite MOE, identifying π - π stacking, hydrophobic, and van der Waals interactions as the driving forces for binding, an observation consistent with the hydrophobic nature of the site. Molecular dynamics simulations with one of the compounds for 100 ns verified the overall stability of a docking-predicted pose and revealed the presence of interacting water molecules in the vicinity of the ligand. Given the buried location of the ligand in the core of the receptor, this observation was somewhat unexpected, but it explained a slight shift of the ligand pose seen during the simulation.

Keywords: homology model, molecular dynamics, MOE, ligand-binding interactions, docking, breast cancer, aryl hydrocarbon receptor

1. Introduction

The aryl hydrocarbon receptor (AhR) is a member of the basic helix-loop-helix/Per-ARNT-SIM (bHLH/PAS) transcription factor family [1–4]. In its inactive state, the AhR resides in the cytosol of the cell as a complex with a number of other proteins. This complex ensures the stability of the AhR in a high-affinity ligand-binding form and prevents the premature translocation of the receptor. Upon binding of a ligand, it dissociates from these proteins and travels to the cell nucleus,

where it binds to DNA xenobiotic response elements (XREs). This in turn induces the expression of several cytochrome P450 enzymes and a sulfotransferase (typically SULT1A1) that contain XREs in their promotor sequence. These enzymes then initiate the oxidative breakdown of the offending compound.

The AhR pathway has a number of roles, including as a modulator of viral immunity and the correct functioning of the female reproductive system. Its most well-known role is a mechanism by which cells defend themselves against the toxic effects of polycyclic and polyhalogenated aromatic hydrocarbons, such as the Seveso toxin dioxin (**1**) (**Figure 1**) [5, 6].

Hijacking of the pathway is based on the use of compounds capable of activating the pathway and then converting into highly reactive species such as nitrenes once being targeted by the metabolic enzymes. This process ultimately leads to DNA damage and the death of the affected cell (**Figure 2**) [7].

It has been noted that the AhR detoxification process involves the active transport of a ligand, e.g., **1–4**, but not the inhibition of the AhR, which would result in a buildup of toxic materials within the cell. This hijacking of the AhR signaling pathway has been proposed as a novel strategy for designing a new class of drugs against breast cancer [1, 8]. Several compound classes, such as the aromatic acrylonitriles, have shown promise in cell-based assays, displaying remarkable potency and selectivity for breast cancer cells [9, 10]. Two reported AhR ligands, Aminoflavone (**2**) and Phortress (**3**) (**Figure 3**), have progressed to clinical trials, demonstrating the clinical applicability of this approach [11, 12]. Based on this, we have postulated that the AhR is a promising target in the development of breast cancer-specific drugs. In particular, our early studies have demonstrated activity against triple negative breast cancer cell lines [9, 10, 13]. This makes AhR ligands, including the aromatic acrylonitriles, promising candidates for further development into novel agents against breast cancer, that act by a hitherto unexploited mechanism of action.

Here, we demonstrate the use of computational tools for the elucidation of the interactions between the AhR and a targeted selection of chlorinated phenylacrylonitriles. The methods employed include homology modeling, molecular docking, and molecular dynamics (MD) simulations to model the structure of the ligand-binding domain of the AhR, identify its ligand-binding site, characterize critical ligand/

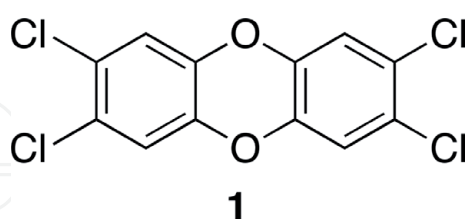


Figure 1.
The aryl hydrocarbon receptor ligand 2,2,6,6-tetrachlorodioxin (**1**).

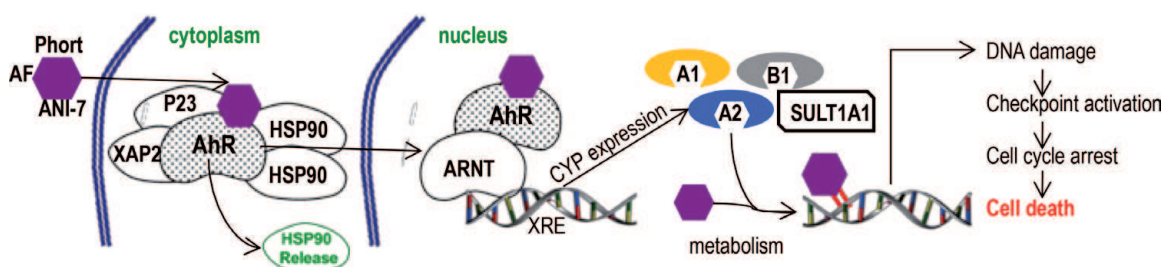


Figure 2.
The AhR pathway showing ligand binding, nuclear translocation, CYP1 activation, metabolism, and cell death. AF = Aminoflavone (**2**), Phort = Phortress (**3**), and ANI-7 = (Z)-2-(3,4-dichlorophenyl)-3-(1H-pyrrol-2-yl)acrylonitrile (**4**) (see **Figure 3** for details).

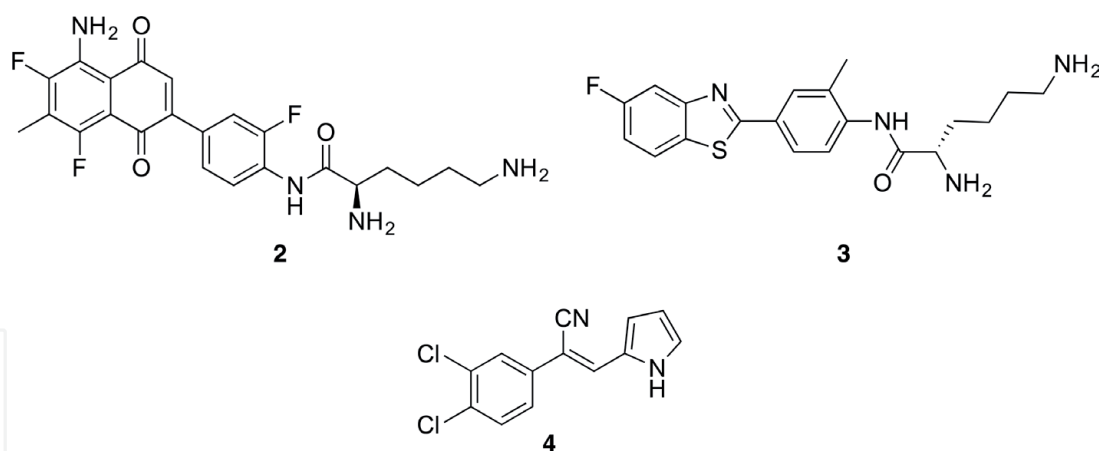


Figure 3. The known AhR ligands, Aminoflavone (2) and Phortress (3), that have proceeded to clinical trials for the treatment of cancer and our recently reported lead AhR ligand, ANI-7 (4) [13].

receptor interactions, and study the time-dependent behavior of a ligand bound to the AhR. The results illustrate the value of computational tools for revealing the potential binding mechanism of these compounds to their target and for guiding the synthesis of novel compounds with improved properties.

2. Homology model

The sequence of the human form of the AhR was downloaded from the NCBI website (access code: NP_001612.1). Since only the ligand-binding PAS-B domain was of interest to our study, the sequence was appropriately truncated before Pro275 and after Lys397. A search in the modeling suite MOE's structural database for suitable templates returned the structures of 4F3L [14], 3RTY [15], and 2KDK [16] as the best matches. Of these, only 4F3L, a murine transcriptional activator complex, provided complete coverage of the PAS-B domain with a sequence identity of 24.4% and a sequence similarity of 48.0% (**Figure 4**). Only three indels were noted in the

```

NP_00161 .....
4F3L.A  GAVEEDDKAKRVS RNKSEKRRDQFNVL IKELGSMLPGNARKMDKSTVLQKSIDFLRK

NP_00161 .....
4F3L.A  HKETTAQSDASEIRQDWKPTFLSNEEFTQLMLEALDGGFFLAIMTDGSIIVVSESVTSLLE

NP_00161 .....
4F3L.A  HLPSDLVDQSI FNFIP EGEHSEVYKILSTHLL ESDSLTPEYLKSKNQLEFCCHMLRGTID

NP_00161 .....
4F3L.A  PKEPSTY EYVRFIGNFKSLTSVSTSTHNGFEGTIQRTHRPSYEDRVC FVATVRLATPQFI

NP_00161 PSILEIRTKNFIFRTKHKLDFTPIGCDAKGRIVLGYTEAELCTRGSYGQFIHAADMLYCA
4F3L.A  KEMCTVEEPNEEFTSRHSLEWKFLFLDHRAPPIIGYLPFEVLGT.SGYDYHVDDLENLA

NP_00161 ESHIRMIKTGESGMIVFRLLTKNNRWTWVQSNARLLYK..NGRPDYIIVTQRPLTDEEGT
4F3L.A  KCHEHLMQYGGKSCYYRFLTKGQQW IWLQTHYYITYHQWNSRPEFIVCTHTVSYAEVR

NP_00161 EHLRK
4F3L.A  AE...
    
```

Figure 4. Alignment of the target sequence of the human form of the AhR (NP_00161) with the sequence of a murine transcriptional activator complex, 4F3L.

alignment—deletions of positions 361 and 362 in the target sequence and an insertion in position 308. The absence of major gaps in the alignment is favorable for the development of homology models as it reduces the need for loop modeling and grafting, which can be challenging [17]. Model development based on the alignment in **Figure 4** was performed using MOE's default settings.

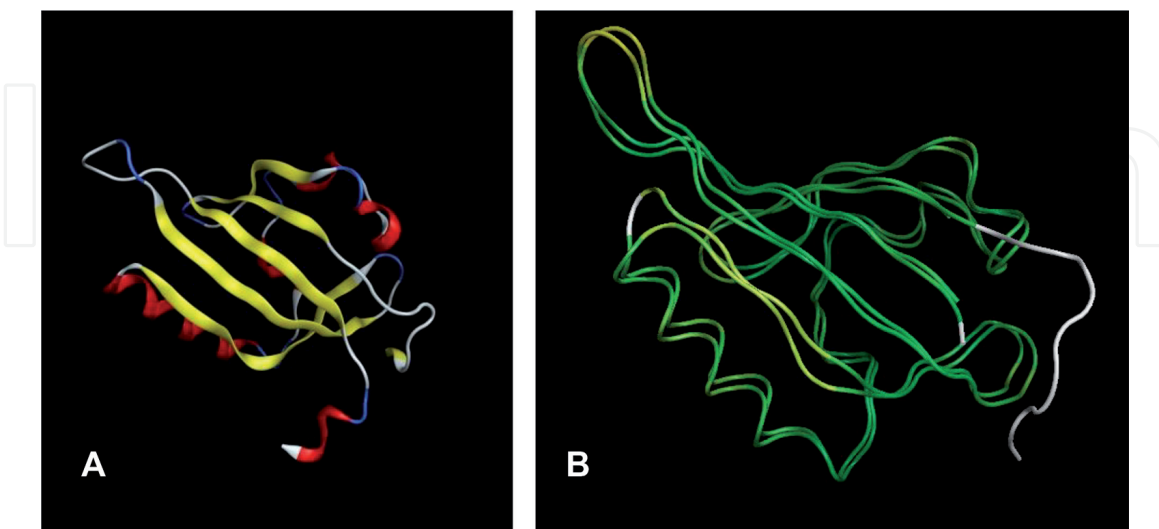


Figure 5. (A) Homology model for the AhR colored by secondary structure. (B) Comparison of backbone traces of homology models obtained by using the MOE modeling suite (template 4F3L) and the automated SWISS-MODEL server (template 5SY7). Coloring is according to RMSD between the two structures (green—yellow—red, in order of increasing deviation), showing very good agreement between the two models. The model obtained from the SWISS-MODEL server had a somewhat longer sequence, resulting in the gray loops at the termini that have no counterpart in the MOE model.

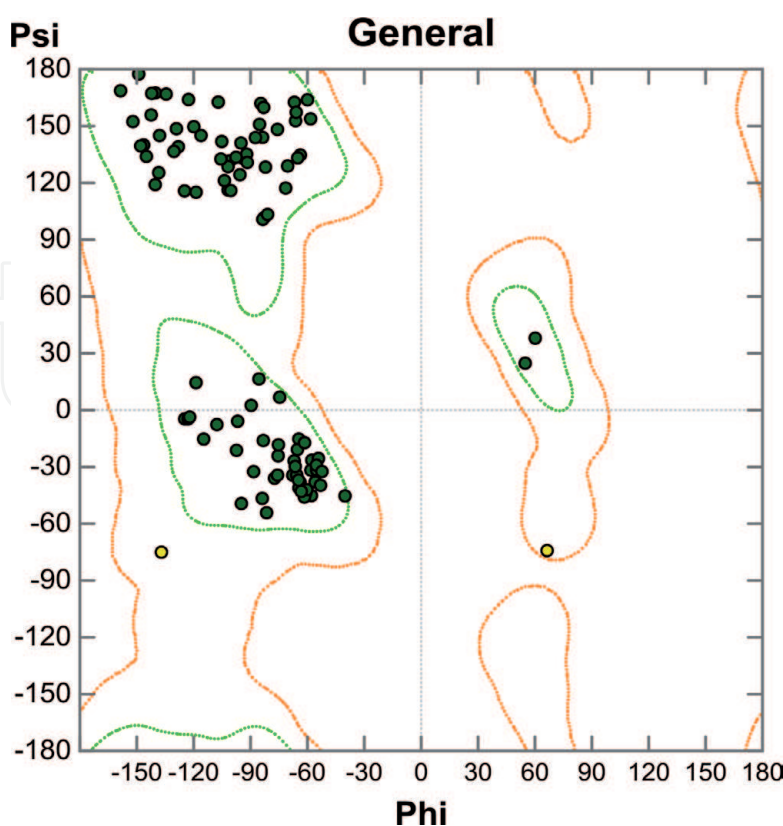


Figure 6. Ramachandran diagram for the homology model for the AhR. Green (●) symbols represent torsion angles in favored regions, whereas yellow (●) symbols represent angles in allowed regions. No entries are present in the “forbidden” areas.

The resulting homology model of the AhR (**Figure 5A**) was subjected to a number of quality tests, such as an analysis of the Ramachandran diagram (**Figure 6**) and an inspection of observed bond lengths, bond energies, and torsion angles. No abnormalities that would have questioned the quality of the model were detected.

An additional check of the model's reliability was carried out by submitting the PAS-B sequence to the automated server SWISS-MODEL [18]. The returned homology model was superimposed to the model obtained from MOE. Even though the new model was derived using a different template (5SY7, an NPAS3-ARNT complex) [19], a very good agreement between the backbones of the two structures was observed (**Figure 5B**), which further instilled confidence in the accuracy of the model.

3. Computational ligand docking

Before ligands could be docked into the homology model of the AhR, the exact location of the binding site had to be identified. We subjected the homology model to a binding site search, a feature implemented in MOE that screens the surface of a protein for concave areas capable of binding small molecules. Two areas large enough to accommodate a typical AhR ligand were detected: one on the surface and another one in the core of the receptor. To decide which of these two sites was more realistic, the crystal structures of the ligand/receptor complexes 3F1O [20], 3H7W [21], and 3H82 [21], all of which are proteins related to the AhR, were superimposed onto the homology model. As shown in **Figure 7**, all three ligands were found in an area equivalent to the binding site located at the center of the protein (**Figure 5**). To facilitate a convenient designation of the binding site for the subsequent docking runs, the ligand of 3F1O—N-[2-nitro-4-(trifluoromethyl)phenyl]morpholin-4-amine (**5**)—was copied into the file of the homology model as a point of reference.

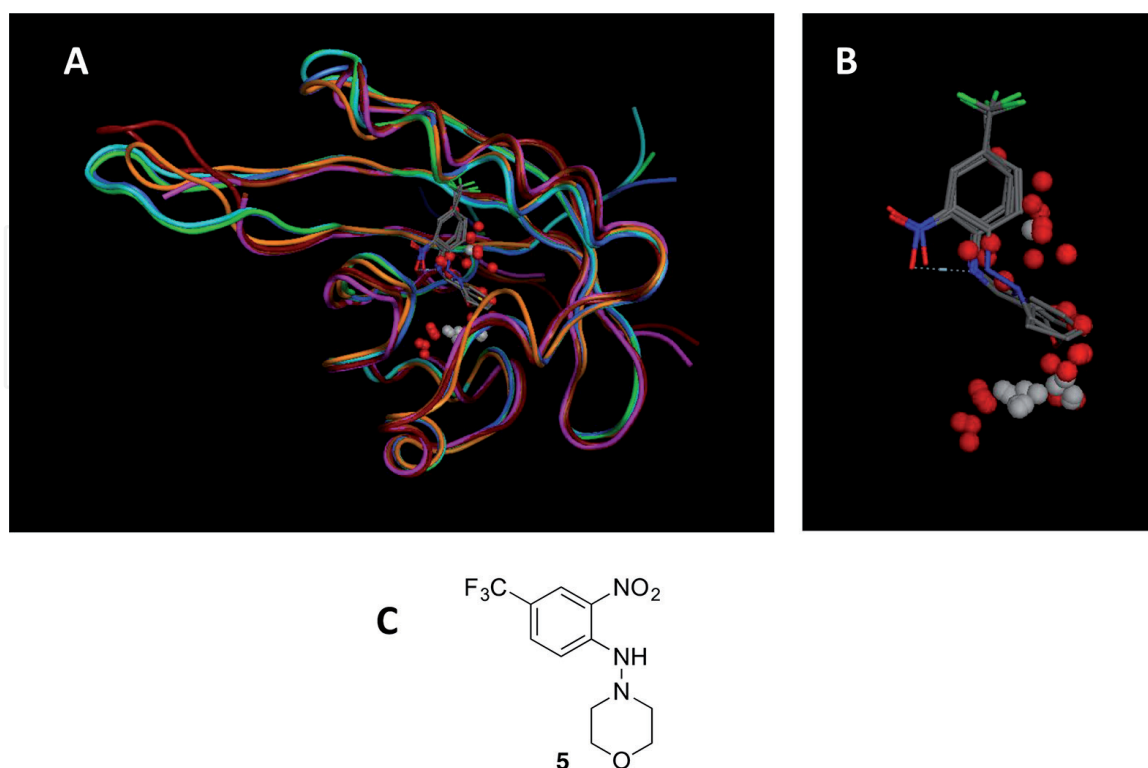


Figure 7. (A) Superposition of protein/ligand complexes related to the AhR onto the homology model of the AhR. Spheres delineate the putative binding site predicted by MOE that coincides with the position of the ligands seen in the crystal structures. (B) A closeup view of the ligand **5**, overlaid with the spheres depicting the binding site predicted by MOE. (C) The chemical structure of the ligand of 3F1O—N-[2-nitro-4-(trifluoromethyl)phenyl]morpholin-4-amine (**5**).

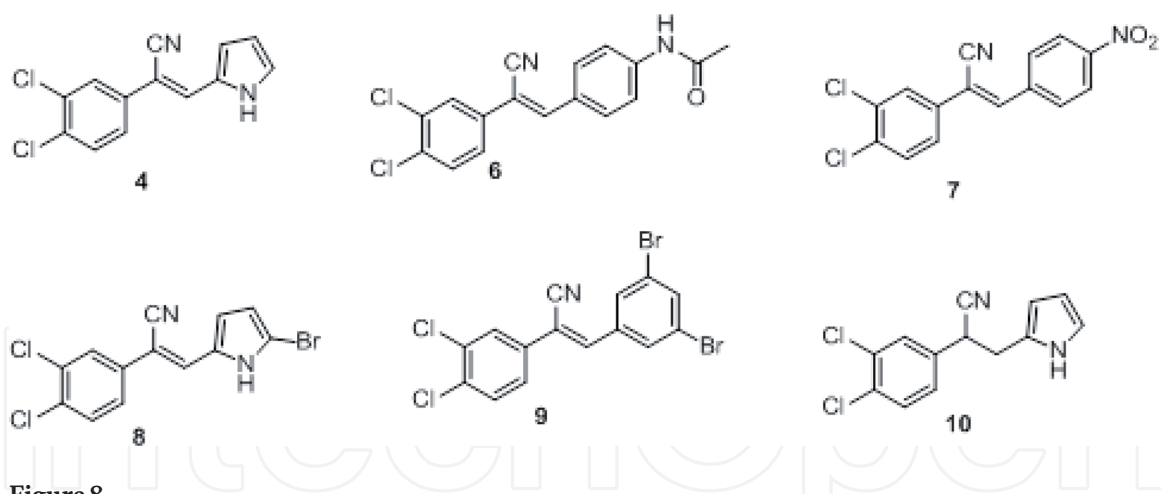


Figure 8.
Structures of six dichlorophenylacrylonitriles (4, 6–10) used for docking.

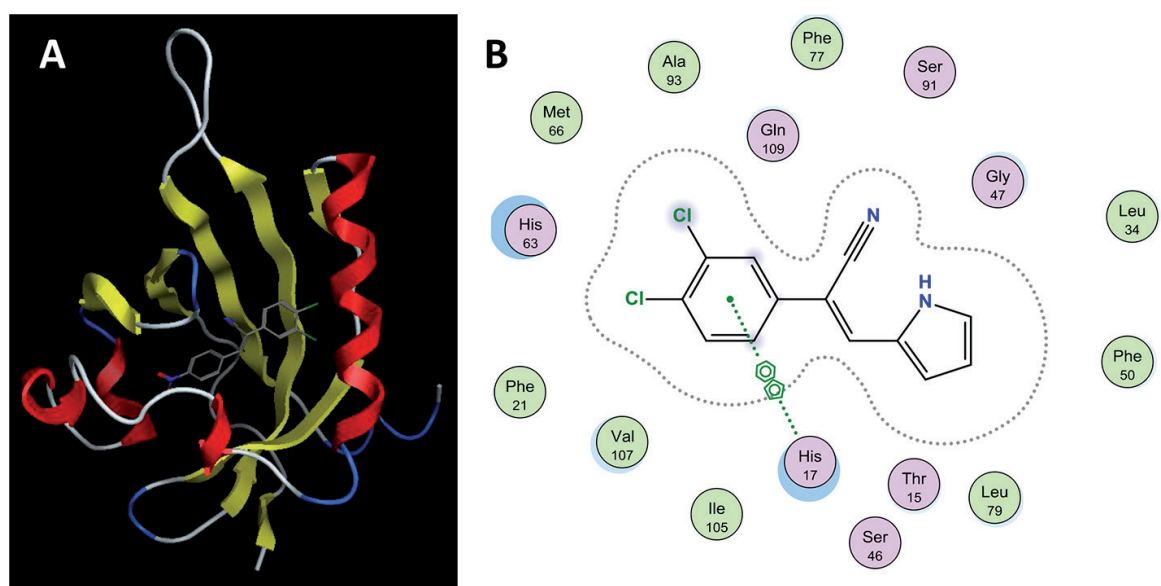


Figure 9.
(A) 3D representation of dichlorophenylacrylonitrile 7 docked into the binding site of the AhR, illustrating the central nature of the site. (B) Interaction diagram of the pyrrole ligand ANI-7 (4), showing π - π -interactions, hydrophobic contacts, and shape complementarity as the driving forces for ligand binding.

To analyze the utility of this model for further drug development, the structures of a representative ensemble of six dichlorophenylacrylonitriles with known bioactivities (**Figure 8**) were modeled in MOE. Their conformational energies were minimized by molecular mechanics in conjunction with the MMFF94x force field. Docking was performed with the default settings of MOE, utilizing a flexible ligand and a mostly static receptor structure and defining the binding site by a position equivalent to that of the ligand present in 3F1O. The top-scoring pose for each ligand was considered for further analysis.

As shown in **Figure 9**, the docked compounds occupied a narrow and mostly hydrophobic site in the core of the AhR. Almost all ligands in the pool engaged with the AhR in a similar fashion, binding in comparable binding poses and exhibiting similar ligand/receptor interactions. Key hydrophobic contacts were observed between nonpolar regions of the ligands and the side chains (Phe21, Leu34, Phe50, Met66, Leu79, Ala93, Ile105, and Val107). Moreover, the ligand phenyl ring engaged in π - π stacking interactions with the ring of His 17. In addition, the tight fit between the ligands and the site suggested the presence of extensive favorable van der Waals interactions.

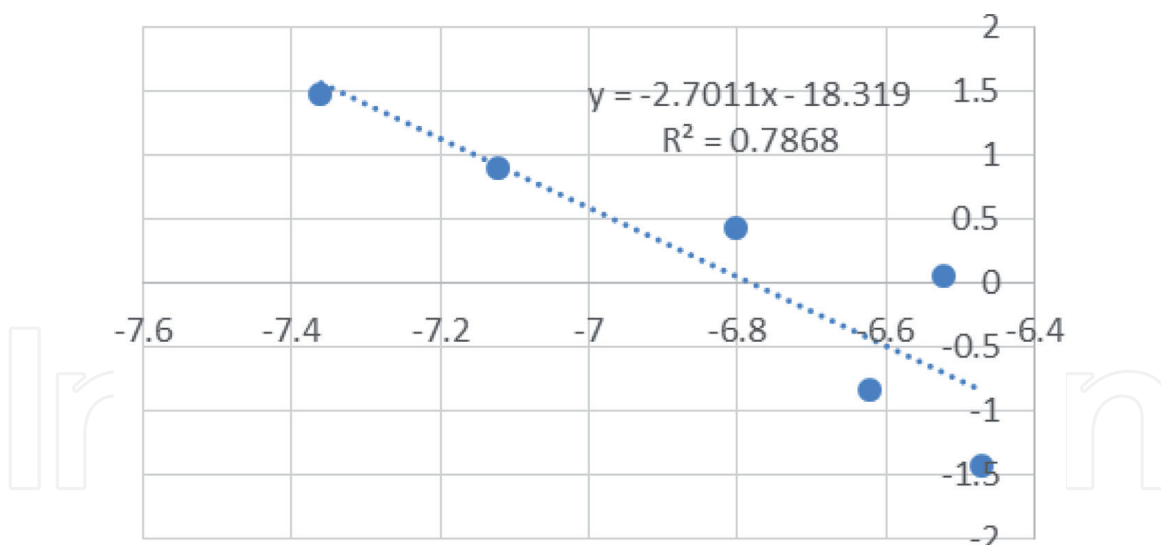


Figure 10. Linear correlation between docking score and bioactivity ($-\log IC_{50}$). Docking was performed with the standard settings of MOE.

In an attempt to attain a quantitative measure of ligand-binding affinity, the docking scores of the compounds were graphed against observed potencies (**Figure 10**). Potencies had been obtained in cell viability assays and the underlying assumption was that ligand binding to the receptor constituted the critical step that would lead to cell toxicity and therefore would correlate with bioactivity. **Figure 10** shows a reasonable correlation between the two quantities with a squared correlation coefficient of 0.79. This data is consistent with the proposed binding mode of AhR ligands, which relies predominately on hydrophobic but also on additional π - π interactions.

4. Molecular dynamics simulations

We complemented our docking-based analysis by MD simulations, whose purpose was twofold. First, we wanted to ensure the stability of a docked pose by monitoring its behavior in a time-resolved system. Second, MD simulations can reveal the role of explicit solvent molecules, something that cannot be accounted for by docking. We selected compound 7 as a representative and subjected it to a simulation time of 100 ns, using the CHARMM36m force field for the protein [22] and the CHARMM general force field for the ligand [23]. The parameters for water were taken from the CHARMM-modified TIP3P water model [24–26] to match those used for the solute. The initial structure of the protein-ligand complex was obtained from docking experiments, and the simulation was performed with the software NAMD [27].

As shown in **Figure 11**, the differences between the poses before and after 100 ns of simulation time were minor. The overall position of the ligand did not change significantly and the only notable difference related to a slight rotation around the central axis of the molecule which placed the nitrile group in a somewhat different environment.

Interestingly, analysis of the MD simulation data revealed the presence of several water molecules in close proximity to the ligand. This observation was somewhat unexpected; while polar water molecules have been found in predominately hydrophobic cores of proteins, it is a rare occurrence [28, 29]. Residues exposed to water molecules included Leu315, Thr289, His 291, Gln383, Ser365, and His 337. In some cases, the solvent molecules formed bridged hydrogen bonds between the nitrile group and the ligand. The latter could explain the abovementioned slight twist of the nitrile group into a more favorable position.

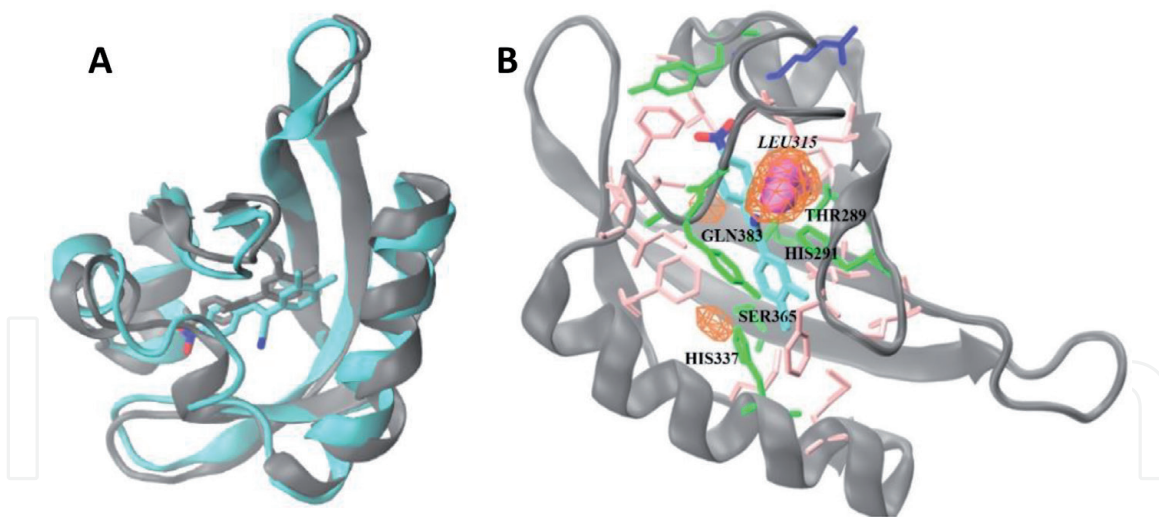


Figure 11. MD simulations. (A) Ligand/AhR complex before (gray) and after (blue) 100 ns of simulation time. (B) Density of water molecules in the binding site as highlighted by orange grids. Residues are colored according to their polarity (pink: nonpolar; green: polar uncharged).

5. Conclusions

Using the AhR and substituted phenylacrylonitriles as an example, we demonstrated the usefulness of a number of computational tools for the study of ligand/receptor interactions. Homology modeling gave access to the structure of a protein domain that has not yet been solved by X-ray crystallography. The most probable binding site was identified, allowing for the docking of ligands, along with a good estimate of their affinities. The identification of this docking site was consistent with subsequent compound design and biological data obtained [10]. MD simulations validated the stability of docked poses and illustrated the role of solvent molecules in the binding pocket. The value of the described techniques lies in their ability to rapidly evaluate the potential of a new ligand *in silico* before spending precious time and resource on its synthesis and experimental evaluation.

Acknowledgements

JR Baker is the grateful recipient of an Australian Government Research Training Program (RTP) scholarship. This work was conducted in part under the auspices of a Fulbright Fellowship awarded to S Paula.

Conflict of interest

The authors declare no conflicts of interest.

IntechOpen

Author details

Stefan Paula^{1*}, Jennifer R. Baker², Xiao Zhu³ and Adam McCluskey²

¹ Department of Chemistry, Purdue University, West Lafayette, Indiana, USA

² Centre for Chemical Biology, Chemistry, School of Environmental Life Science, The University of Newcastle, Callaghan, New South Wales, Australia

³ Research Computing, Information Technology at Purdue (ITaP), Purdue University, West Lafayette, IN, USA

*Address all correspondence to: paulas@purdue.edu

IntechOpen

© 2019 The Author(s). Licensee IntechOpen. This chapter is distributed under the terms of the Creative Commons Attribution License (<http://creativecommons.org/licenses/by/3.0>), which permits unrestricted use, distribution, and reproduction in any medium, provided the original work is properly cited. 

References

- [1] Powell JB, Goode GD, Eltom SE. The aryl hydrocarbon receptor: A target for breast cancer therapy. *Journal of Cancer Therapy*. 2014;**4**(7):1177-1186. DOI: 10.4236/jct.2013.47137
- [2] Haarmann-Stemmann T, Bothe H, Abel J. Growth factors, cytokines and their receptors as downstream targets of the arylhydrocarbon receptor (AhR) signaling pathways. *Biochemical Pharmacology*. 2009;**77**(4):508-520. DOI: 10.1016/j.bcp.2008.09.013
- [3] Kung T, Murphy KA, White LA. The arylhydrocarbon receptor (AhR) pathway as a regulatory pathway for cell adhesion and matrix metabolism. *Biochemical Pharmacology*. 2009;**77**(4):536-546. DOI: 10.1016/j.bcp.2008.09.031
- [4] Hanieh H, Mohafez O, Hairul-Islam VI, Alzahrani A, Bani Ismail M, Thirugnanasambantham K. Novel aryl hydrocarbon receptor agonist suppresses migration and invasion of breast cancer cells. *PLoS One*. 2016;**4**(1):1-16. DOI: 10.1371/journal.pone.0167650
- [5] Bradshaw TD, Bell DR. Relevance of the aryl hydrocarbon receptor (AhR) for clinical toxicology. *Clinical Toxicology*. 2009;**47**(7):632-642. DOI: 10.1080/15563650903140423
- [6] Mandal PK. Dioxin: A review of its environmental effects and its aryl hydrocarbon receptor biology. *Journal of Comparative Physiology B: Biochemical, Systemic, and Environmental Physiology*. 2005;**175**(4):221-230. DOI: 10.1007/s00360-005-0483-3
- [7] Stockinger B, Meglio P, D, Gialitakis M, Duarte JH. The aryl hydrocarbon receptor: Multitasking in the immune system. *Annual Review of Immunology*. 2014;**32**(1):403-432. DOI: 10.1146/annurev-immunol-032713-120245
- [8] Brantley E, Callero MA, Berardi DE, Campbell P, Rowland L, Zylstra D, et al. AhR ligand aminoflavone inhibits A6-integrin expression and breast cancer sphere-initiating capacity. *Cancer Letters*. 2016;**376**(1):53-61. DOI: 10.1016/j.canlet.2016.03.025
- [9] Tarleton M, Gilbert J, Robertson MJ, McCluskey A, Sakoff JA. Library synthesis and cytotoxicity of a family of 2-phenylacrylonitriles and discovery of an estrogen dependent breast cancer lead compound. *MedChemComm*. 2011;**2**(1):31-37. DOI: 10.1039/c0md00147c
- [10] Baker JR, Gilbert J, Paula S, Zhu X, Sakoff JA, McCluskey A. Dichlorophenylacrylonitriles as AhR ligands that display selective breast cancer cytotoxicity in vitro. *ChemMedChem*. 2018;**13**:1447-1458. DOI: 10.1002/cmdc.201800256
- [11] Akama T, Shida Y, Sugaya T, Ishida H, Gomi K, Kasai M. Novel 5-aminoflavone derivatives as specific antitumor agents in breast cancer. *Journal of Medicinal Chemistry*. 1996;**39**(18):3461-3469. DOI: 10.1021/jm950938g
- [12] Shi D, Bradshaw TD, Wrigley S, McCall CJ, Lelieveld P, Fichtner I, et al. Antitumour benzothiazoles. 3. Synthesis of 2-(4-aminophenyl)benzothiazoles and evaluation of their activities against breast cancer cell lines in vitro and in vivo. *Journal of Medicinal Chemistry*. 1996;**39**(17):3375-3384. DOI: 10.1109/ICCCN.2012.6289316
- [13] Gilbert J, De Iuliis GN, Tarleton M, McCluskey A, Sakoff J. (Z)-2-(3,4-dichlorophenyl)-3-(1H-pyrrol-2-yl)acrylonitrile exhibits selective anti-tumour activity in breast cancer cell lines via the aryl hydrocarbon receptor pathway. *Molecular Pharmacology*. 2018;**93**(2):168-177. DOI: 10.1124/mol.117.109827

- [14] Huang N, Chelliah Y, Shan Y, Taylor CA, Yoo S-H, Partch C, et al. Crystal structure of the heterodimeric CLOCK:BMAL1 transcriptional activator complex. *Science*. 2012;**337**(6091):189-194. DOI: 10.1126/science.1222804
- [15] King HA, Hoelz A, Crane BR, Young MW. Structure of an enclosed dimer formed by the *Drosophila* period protein. *Journal of Molecular Biology*. 2011;**413**(3):561-572. DOI: 10.1016/j.jmb.2011.08.048
- [16] Correia C, Wasielewski E, Prendergast F, Mer G. Structure of human circadian clock protein BMAL2 C-terminal PAS domain. Available from: www.rcsb.org/structure/2KDK [Accessed: October 01/2019]. DOI: 10.2210/PDB2KDK/PDB
- [17] Sliwoski G, Kothiwale S, Meiler J, Lowe EW. Computational methods in drug discovery. *Pharmacological Reviews*. 2014;**66**(1):334-395. DOI: 10.1124/pr.112.007336
- [18] Arnold K, Bordoli L, Kopp J, Schwede T. The SWISS-MODEL workspace: A web-based environment for protein structure homology modelling. *Bioinformatics*. 2006;**22**(2):195-201. DOI: 10.1093/bioinformatics/bti770
- [19] Wu D, Su X, Potluri N, Kim Y, Rastinejad F. NPAS1-ARNT and NPAS3-ARNT crystal structures implicate the bHLH-PAS as multi-ligand binding transcription factors. *eLife*. 2016;**5**(e18790):1-15. DOI: 10.7554/eLife.18790
- [20] Scheuermann TH, Tomchick DR, Machius M, Guo Y, Bruick RK, Gardner KH. Artificial ligand binding within the HIF2 α PAS-B domain of the HIF2 transcription factor. *PNAS*. 2009;**106**(2):450-455. DOI: 10.1073/pnas.0808092106
- [21] Key J, Scheuermann TH, Anderson PC, Daggett V, Gardner KH. Principles of ligand binding within a completely buried cavity in HIF2 α PAS-B. *Journal of the American Chemical Society*. 2009;**131**(48):17647-17654. DOI: 10.1021/ja9073062
- [22] Huang J, Rauscher S, Nawrocki G, Ran T, Feig M, de Groot BL, et al. CHARMM36m: An improved force field for folded and intrinsically disordered proteins. *Nature Methods*. 2017;**14**(1):71-73. DOI: 10.1038/nmeth.4067
- [23] Vanommeslaeghe K, Hatcher E, Acharya C, Kundu S, Zhong S, Shim J, et al. CHARMM general force field: A force field for drug-like molecules compatible with the CHARMM all-atom additive biological force fields. *Journal of Computational Chemistry*. 2010;**31**(4):671-690. DOI: 10.1002/jcc.21367
- [24] Jorgensen WL, Chandrasekhar J, Madura JD, Impey RW, Klein ML. Comparison of simple potential functions for simulating liquid water. *The Journal of Chemical Physics*. 1983;**79**(2):926-935. DOI: 10.1063/1.445869
- [25] Durell SR, Brooks BR, Ben-Naim A. Solvent-induced forces between two hydrophilic groups. *The Journal of Physical Chemistry*. 1994;**98**(8):2198-2202. DOI: 10.1021/j100059a038
- [26] Neria E, Fischer S, Karplus M. Simulation of activation free energies in molecular systems. *The Journal of Chemical Physics*. 1996;**105**(5):1902-1921. DOI: 10.1063/1.472061
- [27] Phillips JC, Braun R, Wang W, Gumbart J, Tajkhorshid E, Villa E, et al. Scalable molecular dynamics with NAMD. *Journal of Computational Chemistry*. 2005;**26**:1781-1802. DOI: 10.1002/jcc.20289
- [28] Levy Y, Onuchic J. Water and proteins: A love-hate relationship. *PNAS*. 2004;**101**(10):3325-3326. DOI: 10.1073/pnas.0400157101

[29] Adamek DH, Guerrero L, Blaber M, Caspar DLD. Structural and energetic consequences of mutations in a solvated hydrophobic cavity. *Journal of Molecular Biology*. 2005;**346**(1):307-318. DOI: 10.1016/j.jmb.2004.11.046

IntechOpen

IntechOpen