

# We are IntechOpen, the world's leading publisher of Open Access books Built by scientists, for scientists

4,800

Open access books available

122,000

International authors and editors

135M

Downloads

Our authors are among the

154

Countries delivered to

TOP 1%

most cited scientists

12.2%

Contributors from top 500 universities



WEB OF SCIENCE™

Selection of our books indexed in the Book Citation Index  
in Web of Science™ Core Collection (BKCI)

Interested in publishing with us?  
Contact [book.department@intechopen.com](mailto:book.department@intechopen.com)

Numbers displayed above are based on latest data collected.  
For more information visit [www.intechopen.com](http://www.intechopen.com)



---

# Microsatellite Markers in Analysis of Forest-Tree Populations

---

Justyna Anna Nowakowska

Additional information is available at the end of the chapter

<http://dx.doi.org/10.5772/64867>

---

## Abstract

The present state of knowledge regarding the genetic diversity of forest tree species has been greatly improved with the development of the powerful research tool that the microsatellite markers represent. These noncoding sequences are considered to be neutral, highly polymorphic, and species specific. The usefulness of the microsatellite markers was recently proven by the determination of differentiation at inter- and intrapopulation level, gene flow in natural forest-tree populations, heritability processes, and sustainable management of forest genetic resources in many natural forest stands. In this chapter, I aim to describe the practical approach of microsatellite markers, used in determination of genetic structure of 14 Scots pine populations from North-eastern Poland. Investigated pine populations exhibited high genetic parameter variation, for example, mean PIC = 79.3, Shannon Index  $I = 2.488$ , observed ( $H_O = 0.778$ ) and expected ( $H_E = 0.849$ ) heterozygosity. Low level of  $F_{st} = 0.031$  demonstrated that studied populations are more differentiated within than among stands, which were grouped into one cluster of genetic similarity. In conclusion, the present distribution of genetically related populations of Scots pine in North-eastern Poland seems to reflect the historical events such as postglacial colonization of Poland from different European refugia and/or human management carried out in the past.

**Keywords:** cpSSR, genetic distance, genetic variation and differentiation, heterozygosity level, *Pinus sylvestris* L., SSR markers

---

## 1. Introduction

The sustainable management of forest genetic resources requires a good knowledge of the genetic diversity of species. Because of their longevity and wide geographic distribution,

---

forest-tree species have developed a high level of genomic heterogeneity as a genetic potential through which they adapt to the specific environmental factors of a given habitat [1, 2]. Human industrial activities and changing environmental conditions have exposed many species to the threat of extinction, and, with a view to the appropriate gene-conservation measures being taken, many governments are aware of the need for forest management to maintain the biodiversity of locally adapted species. Equally, not only endangered forest-tree species but also economically important ones should be protected in a specific conservation programs based on valuable genetic data [3].

If the conservation of forest-tree genetic resources is to be pursued, molecular markers such as DNA sequences would seem suitable where the study of the genetic variation among trees is concerned [4–6]. Appropriate marker systems can facilitate investigation of the genetic relationships between forest-tree stands and the mapping of gene positions on chromosomes. For these purposes, several methods of DNA diversity assessment are commonly used, for example, RAPD (random-amplified polymorphic DNA), AFLP (amplified fragment length polymorphism), RFLP (restriction fragment length polymorphism), STS (sequence-tagged site), and microsatellites [4, 5, 7–12].

### 1.1. Characterization of microsatellite markers

Since the early 1990s, a powerful molecular marker has emerged in the shape of the microsatellite sequences discovered in the genomes of all living organisms. Microsatellites (or SSRs—simple sequence repeats) comprise tandem repeats of short DNA sequences from one to six base-pair motifs, largely distributed over the entire genome. They are considered to be highly polymorphic DNA markers with codominant inheritance and selectively neutral behavior [4, 5, 13]. SSR sequences are present in all living organisms, including protists, prokaryotes, eukaryotes, and fungi. In many species, the majority (48–67%) of tandem repeats are dinucleotides, mostly localized in noncoding regions of the genome [14]. Mononucleotide repeats are considered to be the most abundant class of microsatellites in primates, while tri-, tetra-, and hexanucleotide SSR repeats are reported in other organisms. Exposed to high incidences of mutation ranging from  $10^{-2}$  to  $10^{-6}$  nucleotide per locus and per generation, microsatellites are characterized by considerable polymorphism and species specificity [4, 14].

Despite the neutrality assigned to microsatellite markers, the SSR sequences seem to serve some function in different eukaryotic organisms [15]. So far, no evident role for the abundant tandem-repeated sequences has been found, though the SSRs are presumably involved in chromatin organization in the nucleus, DNA replication, regulation of gene expression, and (putatively) in the mismatch-repair system [4, 16]. Tandem-repeated sequences located in the introns of genes could trigger the disruption of the triplet-reading code. The new reading frame may be lethal, or present some advantage from the evolutionary point of view. In fact, the microsatellite triplets are more often subjected to polymerase slippage during the replication and transcription of genes. Long trinucleotide repeats, for example, CAG, CTG, CCG, and CCG, may also form secondary structures of DNA strands and influence recombination [4, 5]. Many promoters contain repeated cis-acting DNA fragments, while microsatellites may also be involved in the regulation of gene expression.

## 1.2. Advantages and weak points of SSR markers

The precise identification of biological samples based on microsatellite loci remains a fundamental for population genetics study [17, 18]. These markers present many advantages, for example, locus specificity, the small amount of DNA required, the almost absolute sizing of alleles, and fast detection [4, 5, 19]. The SSR fragments (also called alleles) are screened by their length expressed in base pairs, and the differences in allele sizing among individuals of one species are caused by varying numbers of repeats in microsatellite motifs.

From practical point of view, an unexpected allele sizing of microsatellite sequences sometimes occurs. In many genomes, the microsatellites mutate by errors in replication or unequal crossing over during recombination process [20]. Moreover, homoplasmy, null alleles, and short allele dominance may cause problems during microsatellite scoring [5, 14, 21, 22].

Homoplasmy concerns the alleles of the same size but presenting different base-pair composition. Null alleles mean the lack of polymerase chain reaction (PCR) amplification of allele caused by nucleotide mutation in primer-binding sites. The short allele dominance is observed when large allele size dropout occurs. The amplification of nonexpected allele size often results from polymerase slippage during PCR. First of all, long and nonperfect motif repeats of microsatellite loci, especially with polyA tracks in the internal sequence, may enhance polymerase slippage [23]. Furthermore, some fluorescent dyes such as Ned, 6-Fam, and Hex in ABI sequencer 3500 Genetic Analyzer (Life Technologies™) or Well-Red D2, D3, and D4 dyes in CEQ™ 8000 Genetic Analysis System (Beckman Coulter, Fullerton, CA) used to label the primers can modify the mobility of the PCR products on the gel [24], and generate nonstandard scoring of alleles. The various lengths of SSR-flanking regions should also be taken into consideration as a putative source of nonstandard allele polymorphism [24]. Sometimes, the microsatellite allele sizes alone are insufficient to determine species biogeography for organisms with predominant asexual mode of reproduction [25].

## 2. Need for SSR markers and appropriate methodologies

In conifers, mostly di-, tri-, and tetranucleotide repeats are present in high proportion in the genome [19, 26]. In the case of *Pinus sylvestris* (L.), only a few nuclear microsatellite loci have so far been distinguished, for example, SPAC 3.7 (Genbank code AJ223769), SPAG 7.14 (AJ223771), SPAC 11.4 (AJ223766), SPAC 11.5 (AJ223768), SPAC 11.6 (AJ223767), SPAC 11.8 (AJ223770), and SPAC 12.5 (AJ223772), mentioned by Soranzo et al. [9] and available on the websites [27–29]. More Scots pine nuclear microsatellite loci can also be found in the Kostia et al. [30] and Chagné et al. [31] publications.

The transferability of the microsatellite loci between conifers is generally difficult. Many microsatellites need to be isolated *de novo* because the specificity of flanking SSR regions is high [32, 33]. This is partly due to the high rate of nucleotide substitution in noncoding regions of the genome. Moreover, conifers exhibit larger genome size (between  $21 \times 10^9$  and  $134 \times 10^9$  megabases) and higher genome complexity than deciduous trees [34]. Transferability of SSR

sequences between *P. taeda*, *P. radiata*, and *P. pinaster* has been reported, for example, by Chagné et al. [31] and González-Martínez et al. [33]. In Scots pine, most SSR investigations are based on microsatellite loci transferred from *P. taeda* or *P. pinaster* [35, 36].

The structure of the Scots pine genome is complex. Nevertheless, some studies of microsatellites in European Scots pine populations reveal a low level of genetic differentiation [9, 37–39]. These data are concordant with the low genetic variation in polymorphism frequencies of Scots pine stands assessed with isozyme markers in Europe [40]. The main reason for this limited genetic variation in Scots pine populations lies in the transfer of seed material in the past, as enhanced by the long-distance gene flow occurring among Scots pine stands in Europe [41].

The microsatellite markers in forest-tree species are analyzed following the general pathway composed by four general steps: (1) isolation of genomic DNA from plant tissue, (2) DNA amplification by polymerase chain reaction, (3) fragment length sizing and allele determination of the obtained PCR products performed using a capillary electrophoresis in automatic sequencer, and (4) statistical analyses of population genetic variation and differentiation.

### 2.1. Isolation of genomic DNA

Many methods of genomic DNA extraction from plant tissue have been proposed, for example, cetyltrimethylammonium bromide (CTAB) method-based isolation described by Doyle and Doyle [42], DNeasy Plant Mini Kit (Qiagen®), MagAttract 96 DNA Plant Core Kit (Qiagen®) [43], and NucleoSpin Plant II (Macherey-Nagel®) [43]. The mentioned methods yield c.a. 1–2 µg of DNA per 50–100 mg of plant tissue, which is sufficient for nuclear and organelle DNA amplification. According to the tissue type, that is, cambium, sapwood, or hardwood, a different yield of the DNA may be obtained, in favor of cambial cells in *P. radiata* [44] and *Quercus robur* [45]). Good quantity and quality DNAs were also obtained by Asif and Cannon [46] and Tibbits et al. [44], who supplemented the classical CTAB method with buffer containing NaCl and BSA effectively removing co-extracted contaminants. The main difficulty in DNA-based analyses remains in proper DNA extraction method from wood tissues because of the high amount of polysaccharides and polyphenolic compounds residuals which inhibit the Taq polymerase during the PCR [44]. The removal of contaminants guarantees the success of further amplification and accurateness of DNA fragment (allele or gene) detection during the capillary electrophoresis performed in automated sequencer.

Sometimes, the genomic DNA isolation step may be overcome by a direct PCR performed on fresh plant tissue with Phire® Plant Direct PCR kit (Finnzymes®, Vantaa, Finland), as demonstrated for silver fir samples [43].

### 2.2. DNA amplification by polymerase chain reaction

Prior to amplification, the quality of DNA is checked by electrophoresis or with NanoDrop® ND-1000 spectrophotometer (Wilmington, USA). The first method relies on classical gel-based separation in the electric field of DNA fragments in c.a. 1% agarose gel or on chip-based electrophoresis in Bioanalyzer apparatus using Agilent DNA 1000 kit (Agilent Techn. Wald-

bronn, Germany). Good quality and sufficient quantity of DNA molecules guarantee high yield of further amplification by polymerase chain reaction. Developed in 1983 [47], the PCR consists in three major steps: (1) initial denaturation of double-stranded DNA matrix generally in temperature of 94–98°C for 30 s, to 1 mi; (2) annealing of primers in temperature of 50–60°C for 20–30 s; and (3) extension and elongation step in 72°C. The time and the temperature of each step strongly depend on primer structure and polymerase used in the reaction [48]. All steps are repeated 30–40 times in a thermal cycler, for example, Veriti 96 Thermal Cycler (Life Technologies™, USA), T1000 Touch™ Thermal Cycler (Bio-Rad Laboratories, Inc., USA), or TPersonal Thermocycler (Biometra®, Germany). At the end, several thousands of copies of initial DNA matrix are generated.

### **2.3. Fragment length sizing and allele determination of the obtained PCR products performed using a capillary electrophoresis in automatic sequencer**

The PCR products are generally analyzed with capillary sequencer, for example, CEQ8000™ (Beckman-Coulter®, USA) or 3500 Genetic Analyzer (Life Technologies™, USA) using appropriate software for data collection. The typical programs are: CEQ™8000 Genetic Analysis System version 9.0 (Beckman Coulter®) in the case of the CEQ8000 apparatus, and 3500 Data Collection Software and GeneMapper® v. 5 in the case of the 3500 Genetic Analyzer (Life Technologies™, USA).

### **2.4. Statistical analyses of population genetic variation and differentiation**

In general, statistical analyses of population genetic variation and differentiation comprise the parameters describing population genetic variation and differentiation, that is, observed and expected number of alleles ( $n_a$ ,  $n_e$ , respectively), observed and expected heterozygosity ( $H_o$ ,  $H_e$ ), Shannon diversity index ( $I$ ), and fixation index/inbreeding coefficient of  $F$ -statistics ( $F_{is}$ ,  $F_{st}$ ). The significant deviations from Hardy-Weinberg equilibrium (HWE) per each locus, analysis of null alleles (commonly found in SSR loci), and polymorphism information content (PIC) are also computed [21, 49–51]. The statistical methods, used in the study of population genetics, should be applied according to the defined objective. Many genotype-distribution methods are based on data for allele/gene frequencies, distograms of genetic dissimilarity, or mapping of gene position. The spatial patterns depend on many factors such as isolation by distance, and factors of environmental selection, migration, and human activity [52]. Several items of software can be applied in this field (e.g., GeneA1Ex, PopGen, SPAGeDi, etc.). Those programs take into account Hardy-Weinberg equilibrium, multiple allele and loci inheritance, natural selection, genetic drift, migration, mutation, and inbreeding analyses [51, 53].

All statistical methods should consider the effect of interaction between genotype and the environment, in order to precise the estimation values of observed genotype in given conditions. Forest-genetic field experiments are based on tests of adjustment for local environmental factors and on the estimation of breeding values. The multi-trait selection measures attempt to predict trees' response to the selection effect. The assessment of valuable quantitative trait loci (QTL) mapping, gene-expression analysis, or the long-term response of evolutionary

selection makes use of several programs, for example, analysis of variance (ANOVA), statistical analysis system (SAS, restricted maximum likelihood (RML), and S-Plus [38].

In order to illustrate the genetic similarity between studied populations, usually the dendrogram based on the distance matrix is constructed. To this end, very often the UPGMA (unweighted pair group method with arithmetic mean) method is applied [50, 53]. To produce a dendrogram of genetic similarity, the UPGMA method employs a sequential clustering algorithm. For instance, the DendroUPGMA software is a good tool for computing the clustering from the sets of variables [49, 54], with several factors such as Pearson coefficient, Jaccard similarity coefficient, and Dice coefficient.

The resulting tree (dendrogram) of genetic similarity gathers the populations in branches defined by, for example, 100-bootstrap replicates, which give an estimation of probability for particular node. The calculation of the CoPhenetic correlation coefficient (*CP*), which values are comprised between 0 and 1, gives a measure of distance accurateness of the dendrogram.

### **3. Genetic variability of forest stands assessed with microsatellite markers: a case study of *P. sylvestris* (L.) in North-eastern Poland**

#### **3.1. Object of the study**

Scots pine (*P. sylvestris* L.) is the most widely distributed coniferous species in Europe. The species enjoys major economic relevance, especially in Northern and Eastern European countries. In Poland, *P. sylvestris* accounts for 69.4% of total forest area, in Finland 64.9%, and in Lithuania 36.5% [55–57]. The present genetic structure to the Scots pine stands in Europe has been largely influenced by climatic and environmental factors [58]. Above all, the recolonization of the continent after the last glaciation period contributed to the rapid expansion of Scots pine populations from their South-European and Central Russian refuges to the North of the continent [40, 59–61]. Second, the distribution of many Scots pine stands in the European landscape reflects the present situation and socioeconomic changes, for example, privatization, the increased demand for wood, deforestation, and reforestation [58]. Due to the high level of anthropogenic pressure, the genetic resources of many forest-tree species in Europe have frequently been impoverished. Moreover, the transfer of genetic material across European countries has modified the natural gene pools in many forest-tree stands [58].

Recent advances in regard to the genetic diversity *P. sylvestris* have highlighted the usefulness of nuclear SSR markers in forest-tree genetics, focusing especially on genotyping of the Scots pine populations in Poland. In the present study, 14 natural or seminatural, 110-year-old Scots pine populations, located in North-eastern part of Poland were investigated (**Table 1**).

#### **3.2. Methodology of Polish case study**

The extraction of total DNA from the 100 mg of needles was performed using Qiagen DNeasy Plant Mini kit according to the manufacturer's instruction (Qiagen® Hilden, Germany). The

quality and purity of DNA were analyzed by absorption in 230, 260, and 280 nm in Nano-Drop<sup>®</sup> spectrophotometer (Wilmington, USA). Four nuclear microsatellite DNA markers were amplified, that is, SPAG 7.14, SPAC 12.5, PtTX3025, and SsrPt-ctg4363 [9, 31, 38]. For all loci, Well-Red labeled primers were synthesized by Sigma-Aldrich Company (St Louis, USA). The PtTX primers were originally designed for *P. taeda* but they were proved to be as useful as markers developed for *P. sylvestris*. The obtained PCR amplicons were analyzed using DNA capillary electrophoresis in CEQ8000 Beckman Coulter<sup>®</sup> sequencer, and analyzed using the software CEQ<sup>™</sup>8000 Genetic Analysis System v 9.0 (Fullerton, USA).

Population (Forest Directorate, Forest stand)	Location	<i>N</i>	<i>n<sub>a</sub></i>	<i>n<sub>e</sub></i>	<i>I</i>	<i>H<sub>O</sub></i>	<i>H<sub>E</sub></i>	<i>h</i> Nei
1. Czarna Białostocka, Polanki	53°18'N, 22°25'E	50	16.500	10.211	2.163	0.710	0.795	0.785
2. Czarna Białostocka, Budzisk	53°17'N, 23°18'E	48	16.750	10.250	2.175	0.798	0.802	0.793
3. Dojlidy	53°05'N, 23°11'E	50	15.500	8.630	2.115	0.741	0.800	0.791
4. Supraśl	53°17'N, 23°30'E	50	16.250	9.726	2.217	0.832	0.824	0.815
5. Waliły	53°12'N, 23°39'E	48	16.750	9.325	2.235	0.750	0.833	0.823
6. Żednia, Nowa Wola	52°59'N, 23°33'E	50	16.750	9.540	2.210	0.815	0.819	0.810
7. Żednia, Borsukowina	53°15'N, 23°38'E	50	16.750	9.715	2.223	0.828	0.831	0.822
8. Hajnówka	54°15'N, 23°05'E	50	19.250	11.499	2.278	0.776	0.802	0.793
9. Browsk	52°55'N, 23°36'E	48	18.500	10.532	2.250	0.789	0.811	0.802
10. Bielsk	52°36'N, 23°23'E	50	17.000	8.750	2.231	0.751	0.828	0.818
11. Rudka	52°54'N, 22°52'E	50	16.250	8.974	2.124	0.785	0.782	0.774
12. Knyszyn, Szelałówka	53°20'N, 22°41'E	50	17.000	10.269	2.244	0.783	0.824	0.815
13. Knyszyn, Kopisk	53°17'N, 23°04'E	50	17.000	10.028	2.161	0.733	0.804	0.796
14. Augustów	53°46'N, 23°10'E	50	17.750	9.315	2.228	0.780	0.818	0.810
Total		1260	30.750	12.400	2.488	0.778**	0.849**	$H_T = 0.848$ $F_{st} = 0.031$

*N*, numbers of sampled trees; *n<sub>a</sub>*, observed number of alleles; *n<sub>e</sub>*, effective allele number; *I*, Shannon index; *H<sub>O</sub>* and *H<sub>E</sub>*, observed and expected heterozygosity; *h*, mean heterozygosity [46]; *H<sub>T</sub>*, genetic diversity among populations; *F<sub>ST</sub>*, coefficient of genetic differentiation of populations [49]. Test of heterozygote deficiency in Hardy-Weinberg equilibrium: \*\**p* < 0.01

**Table 1.** Genetic differentiation level of microsatellite nSSR loci in studied Scots pine populations.

Parameters of genetic diversity (*H<sub>O</sub>*, *H<sub>E</sub>*, *H<sub>T</sub>*), differentiation (*F*-statistics), and genetic distance matrix were computed according to Nei [49,50] in GenALEx v. 6 software [53]. The mean polymorphism information content values were established for each set of markers in MolKin 2.0 software [62].

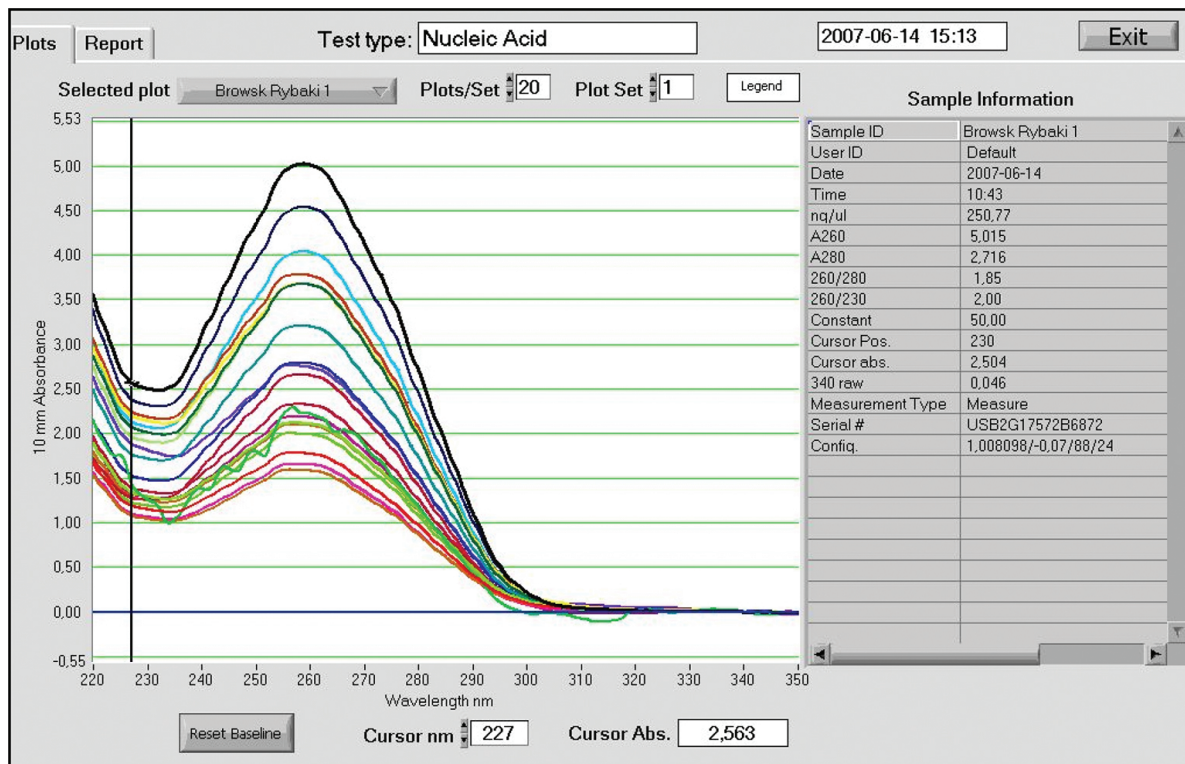


The dendrogram of genetic distances between studied populations was constructed using DendroUPGMA software [63], validated by *CP* computing. Moreover, Bayesian clustering using Markov Chain Monte Carlo (MCMC) algorithm was performed in BAPS 2.0 program, with randomization = 100,000, burning = 50,000, for  $p = 0.02$  [64].

### 3.3. Results of the Polish case study

#### 3.3.1. Quality and quantity of the analyzed DNA

Spectrophotometrical assessment of the genomic DNA isolated from Scots pine samples yielded good quantity and quality of the nucleic acids (**Figure 1**). For all samples, the mean DNA purity ( $A_{260/280} = 1.67$  and  $A_{260/230} = 1.82$ ) and the mean DNA concentration ( $148.89 \text{ ng}/\mu\text{l} \pm 11 \text{ S.E.}$ ) were suitable for further amplification of microsatellite loci in PCR.

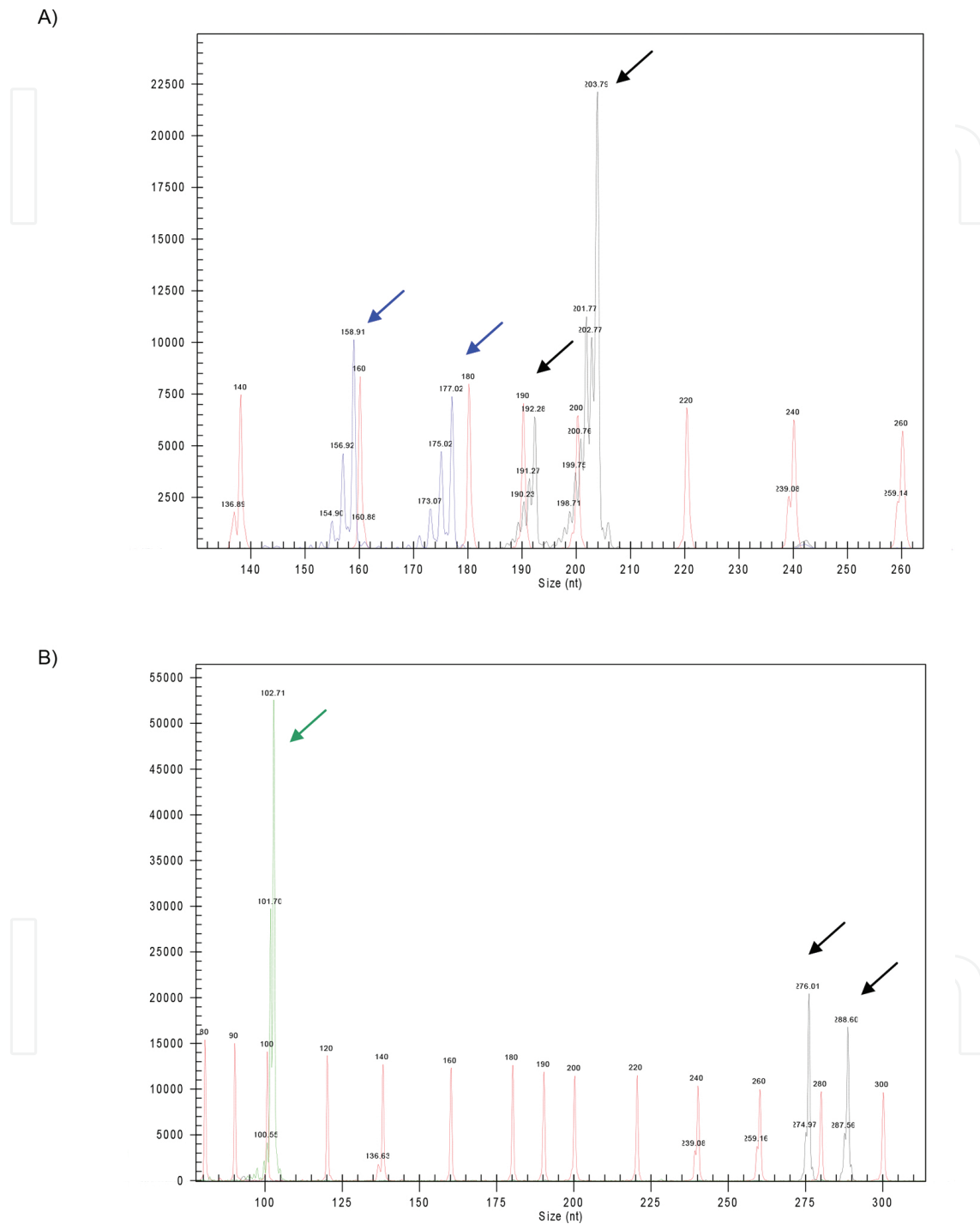


**Figure 1.** Spectrophotometrical assessment of the DNA extracts from Scots pine leaf samples population Browsk, in the spectrophotometer NanoDrop® ND-1000 (TK-Biotech, USA).

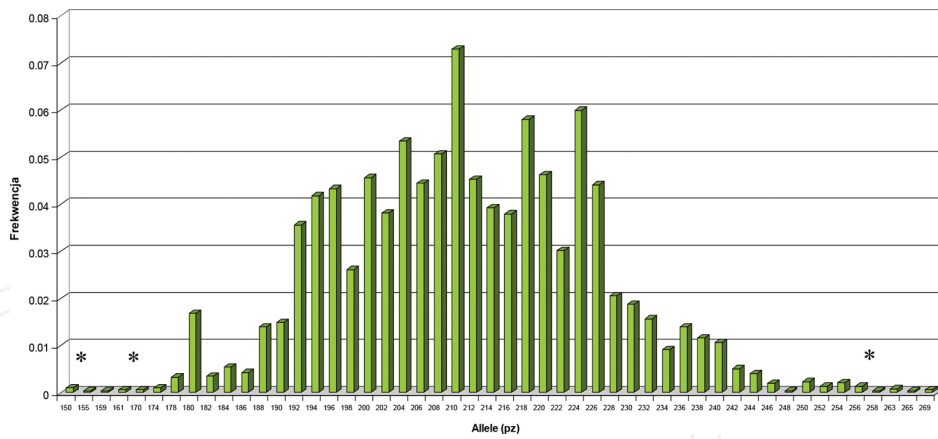
#### 3.3.2. Genetic differentiation level

The studied trees harbored both heterozygotes and homozygotes in four microsatellite loci as illustrated in **Figure 2**. All loci were very polymorphic (mean  $PIC = 79.3$ ), with highest values for loci SPAG 7.14 ( $PIC = 95.4$ ) and SPAC 12.5 ( $PIC = 94.5$ ). Total allele frequency distribution revealed 50 different alleles in SPAG 7.14 locus (**Figure 3**), 48 alleles in SPAC 12.5 (**Figure 4**), 31 alleles in PtTX3025 (**Figure 5**), and 18 alleles in SsrPt-ctg4363 locus (**Figure 6**). The allele

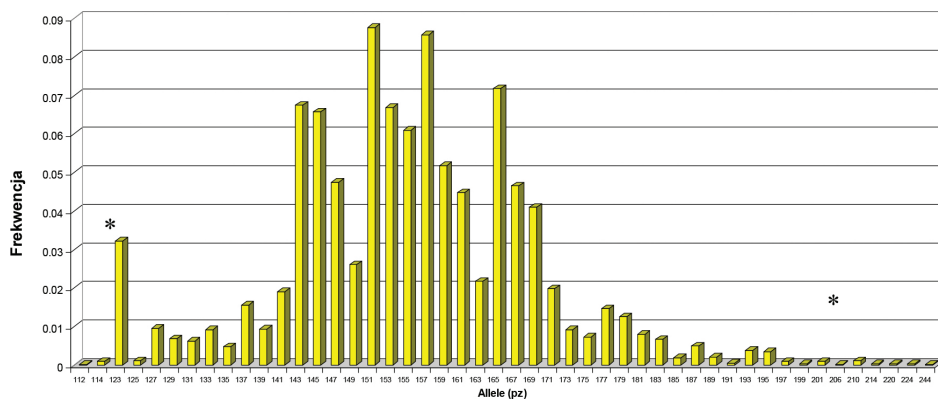
sizing was corrected in all loci because consecutive polymerase slippage was denoted. Null allele content was minor (2.3%) for all microsatellite loci.



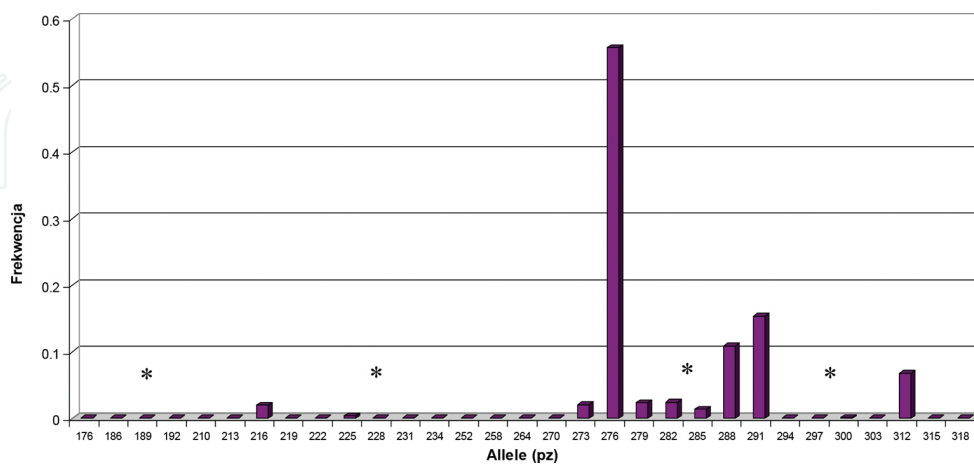
**Figure 2.** Example of microsatellite nuclear DNA analysis in Scots pine populations from North-eastern Poland: two alleles 159 and 177 base pairs in locus SPAG 7.14 (blue color) and two alleles 192 and 204 bp in locus SPAC 12.5 (black color) (A), one allele 102 bp in locus SsrPt-ctg4363 (green color) and two alleles 276 and 288 bp in locus PtTX3025 (black color) (B). Obtained from DNA capillary electrophoresis after Beckman Coulter® software CEQ™ 8000 Genetic Analysis System v 9.0 (Fullerton, USA).



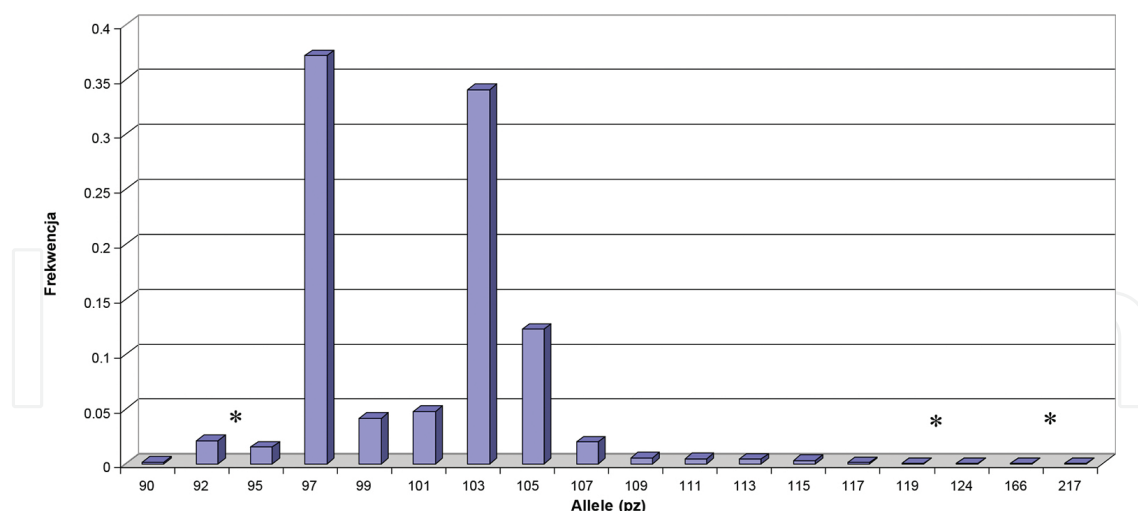
**Figure 3.** Total allele frequency distribution of SPAG 7.14 locus among studied Scots pine populations. \*Polymerase slippage.



**Figure 4.** All allele frequency distribution according to their size for SPAC 12.5 locus among studied Scots pine populations. \*Polymerase slippage.



**Figure 5.** All alleles distribution according to their size of PtTX3025 microsatellite locus in Scots pine stands. \*Polymerase slippage.



**Figure 6.** Total allele frequency distribution of SsrPt-ctg4363 locus among studied Scots pine populations. \*Polymerase slippage

	pop1	pop2	pop3	pop4	pop5	pop6	pop7	pop8	pop9	pop10	pop11	pop12	pop13	pop14
pop1	0	1.262	0.062	0.090	0.085	0.051	0.076	0.030	0.039	0.073	0.048	0.073	1.173	0.067
pop2		0	1.393	1.434	1.175	1.245	1.189	1.372	1.383	1.069	1.347	1.264	0.037	1.111
pop3			0	0.086	0.058	0.054	0.042	0.061	0.043	0.084	0.059	0.068	1.354	0.070
pop4				0	0.115	0.094	0.094	0.085	0.091	0.156	0.116	0.062	1.391	0.111
pop5					0	0.074	0.062	0.091	0.063	0.091	0.074	0.089	1.113	0.113
pop6						0	0.061	0.045	0.056	0.081	0.066	0.057	1.191	0.056
pop7							0	0.071	0.057	0.079	0.062	0.056	1.165	0.052
pop8								0	0.046	0.066	0.045	0.062	1.283	0.062
pop9									0	0.086	0.041	0.056	1.309	0.062
pop10										0	0.072	0.109	0.996	0.086
pop11											0	0.087	1.329	0.084
pop12												0	1.240	0.053
pop13													0	1.100
pop14														0

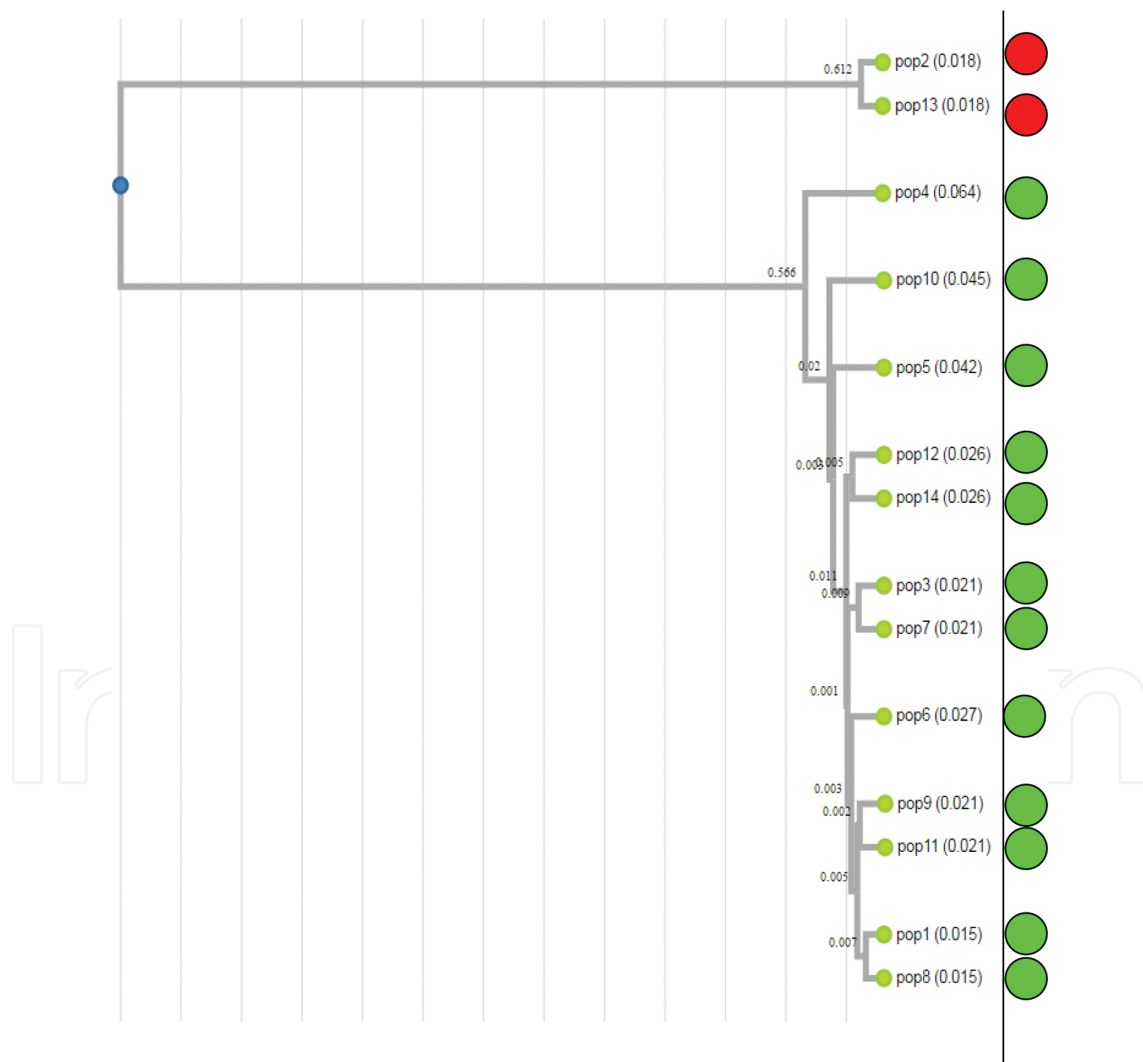
**Table 2.** Distance matrix based on SSR marker frequencies in studied Scots pine populations.

Genetic differentiation level of microsatellite nSSR loci in studied Scots pine populations has been resumed and is listed in **Table 1**. All populations exhibited high genetic parameter variation, with total mean observed ( $n_a = 30.750$ ) and effective ( $n_e = 12.400$ ) allele number per locus, Shannon Index  $I = 2.488$ , observed ( $H_O = 0.778$ ), and expected ( $H_E = 0.849$ ) heterozygosity. The highest  $h$  Nei heterozygosity values ( $h = 0.832$  and  $0.822$ ) were found in Walify and Żednia

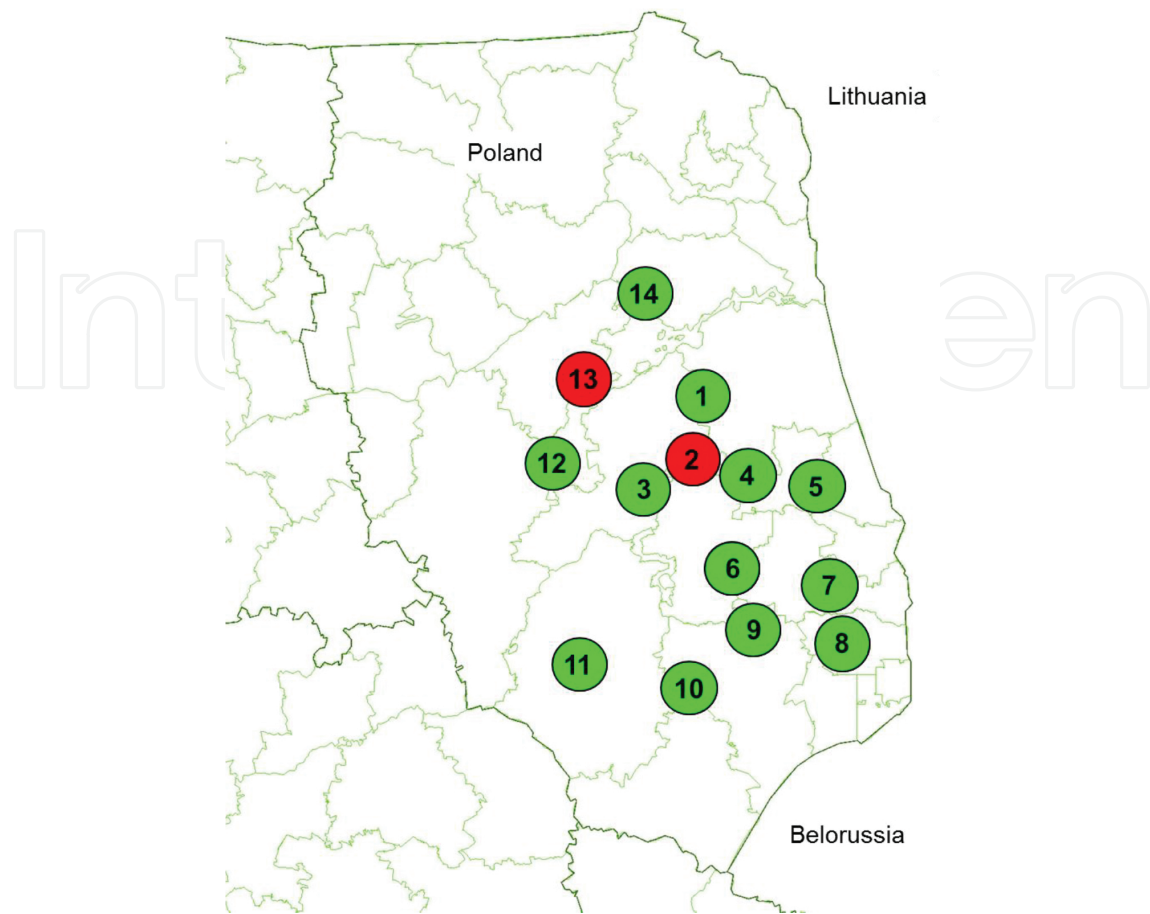
Borsukowina stands, respectively. The lowest ( $H = 0.774$ ) was observed in Rudka stand. Total genetic diversity among populations was high ( $H_T = 0.848$ ). Low level of  $F_{st} = 0.031$  proved that the studied Scots pines are more differentiated within than among examined stands (**Table 1**).

### 3.3.3. Genetic distance ( $D_N$ )

The dendrogram built on the distance matrix based on SSR markers frequencies (**Table 2**) revealed two main clusters of populations (**Figure 7**). Two populations from the first group of dendrogram (number 2, Czarna Białostocka Budzisk, and 13, Knyszyn Kopisk) were separated by a distance of 0.612 from the second group. Moreover, two populations from the first group were closely located one to another in North-eastern Poland (**Figure 8**). Nevertheless, the robust MCMC analysis revealed only one cluster of population genetic grouping, proved also by CoPhenetic Correlation Coefficient value close to 1 ( $CP = 0.993$ ).



**Figure 7.** Dendrogram of genetic distances of Nei [49] based on microsatellite loci in studied Scots pine populations. Number of populations following **Table 1**.



**Figure 8.** Geographical distribution of two genetically related groups of populations of Scots pine from North-eastern Poland, according to the dendrogram of genetic distances (**Figure 7**). Pop1, Czarna Białostocka Polanki; pop2, Czarna Białostocka Budzisk; Pop3, Dojlidy; pop4, Supraśl; pop5, Wality; pop6, Żednia Nowa Wola; pop7, Żednia Borsukowina; pop8, Hajnówka; pop9, Browsk; pop10, Bielsk; pop11, Rudka; pop12, Knyszyn Szelałówka; pop13, Knyszyn Kospisk; pop14, Augustów. Map source: [82]

#### 4. Discussion

The development of an appropriate genetic conservation strategy for native Scots pine populations in European countries seems to be a very relevant priority. Numerous nuclear microsatellite markers have already been described for different conifer species, for example, fir, larch, pine, and spruce (for review, see [9, 14, 19, 31, 33, 65–69]). Some DNA markers have also been used to characterize the genetic variation of *P. sylvestris* populations, for example, RAPD [12, 70], RFLP [59], STS [10], and microsatellites [6, 9, 30, 31, 36, 39, 71, 72].

In Poland, Scots pine resources are classified by reference to 26 seed regions, based on the boundary delineation of physico-geographical features, for example, a homogeneous climate and geographic conditions [12]. Programs for the *in situ* conservation of valuable Scots pine provenances are put in place with regard to the distribution of seed regions, as well as the location of what are known as natural-forest regions. The present rules for the transfer of Scots

pine genetic resources in Europe are mainly founded upon such provenance tests, with only a few investigations being based on molecular markers [12, 40, 73].

In the present study, low genetic differentiation level of 14 Scots pine stands from the North-eastern Poland was determined thanks to the DNA profiles established on a basis of four microsatellite nuclear DNA loci (SPAG 7.14, SPAC 12.5, PtTX3025, and SsrPt-ctg4363). These data support previous investigations of the genetic structure performed using four nuclear microsatellite markers on 42 Scots pine populations located in different regions in Poland [38]. Pine trees from 42 stands were characterized by high polymorphism level ( $PIC = 80.0\%$ ), and low level of interpopulation differences ( $F_{st} = 0.033$ ). The Baltic, Śląska, and Wielkopolsko-Pomorska Regions revealed the highest genetic differentiation ( $F_{st} = 0.036$ ,  $H_s = 0.323$ , and  $H_s = 0.207$ , respectively). The UPGMA analysis performed with nuclear microsatellite markers in 42 populations generated two main groups of populations with a very weak probability of clustering. The geographical distribution of the genotypes emerging from dendrogram was scattered across the country. Moreover, no spatial correlation between the gene diversity and the geographical locations of stands was found [38]. In this regard, data obtained for 14 Scots pine populations from North-eastern Poland (present study) reflect similar level of the genetic variation ( $F_{st} = 0.031$ ), and no spatial correlation between stand location and genetic distance was found. Such a situation is often described for many forest-tree species natural populations, and reflects forest-tree characteristics, such as longevity, long-distance pollen dispersion, and great potential for adaptation to various climatic changes [1, 2, 6, 26, 41, 60, 61].

Scattered distribution of genetically related populations of Scots pine seems to reflect the historical events such as colonization of Poland by this species from different postglacial refugia and/or by significant human management practiced in the past. These data were supported by mitochondrial gene study, which have a maternal mode of transmission, and non-recombinational nature in conifers was used in the study of maternal lineages and the postglacial migration of *P. sylvestris* across Europe [10].

Another type of microsatellite sequences located in chloroplast genome (cpSSR) could also present an interesting tool to which the genetic diversity and gene flow among *Pinus* populations could be analyzed. Since the chloroplast and mitochondrial genomes are uniparentally inherited in conifers, these markers are not exposed to the recombination process [74]. CpSSR loci present some advantages, for example, they are less variable than nuclear SSR, express low mutation rate, and high species specificity [37]. Most of the cpSSR analyses have been reported for different *Pinus* species, for example, *P. leucodermis* [66], *P. halepensis* [75], *P. pinaster* [11,33,76], *P. resinosa* [67], *P. brutia* [77], *P. torreyana* [37], *P. cembra*, *P. sibirica*, and *P. pumila* [78], and *P. echinata* [79]. In most cases, the cpSSR markers have been successfully used in paternity analysis, in the monitoring of the gene flow between populations and in the study of population history following the postglacial migration of pine species.

Recently, investigation focusing on nuclear and chloroplast microsatellite DNA markers in wood tissue identification is an efficient method to be used for forensic purposes. The present methodology helps to compare detailed DNA patterns of Scots pine (*P. sylvestris*), Norway spruce (*P. abies* L. Karst.), European silver fir (*A. alba* L.), and European larch (*L. decidua* Mill.), with high probability of identity (c.a. of 99.99%) [43].

Both adaptive and neutral markers (e.g., microsatellites) present many advantages in modern forest genetics [60, 65, 75, 78, 80]. In order to find the genetic basis of the neutral or adaptive diversity of natural populations, simulations based on adaptive traits, quantitative trait loci, and neutral markers are performed [81].

## 5. Conclusions

The conservation of genetic variability is a major focus in forest-tree selection and sustainable forest management (SFM). The preservation of genetic diversity in different forest-tree species facing changes of environmental conditions and increasing human industrial activity is still the great challenge for researchers involved in adaptive and evolutionary genetics. Genetic variation may be investigated by means of several molecular techniques using DNA markers. Among them, the microsatellites are the most powerful and suitable tool in the identification and characterization of the genetic resources in forest. Because of their relatively high mutation rate, microsatellites are often used to study genetic variation and population structure. The SSR markers constitute an effective tool by which the European Scots pine populations have been studied on the basis of nuclear and chloroplast DNA. In this context, stress is placed on the accurateness of the chosen marker for a given purpose, as well as the statistical methods of calculation.

The nuclear SSRs are mainly used in studying genomic differentiation. The discriminatory power of nuclear SSR markers points out their applicability to the study of various forest-tree populations. The comparative study of dominant and codominant nuclear markers in forest-tree genetics shows that even a few microsatellite loci can be used in the high-accuracy prediction levels of genetic diversity. It is supposed that the populations with low level of genetic variation are generally less genetically stable and more vulnerable to pathogenic infections and harmful changes of environmental conditions [1, 39, 41]. The researchers involved in the field of forestry foresee the need for further analysis using molecular genetic tools.

Particular attention should be drawn to the avoidance of some errors occurring during the scoring of microsatellite allele (in Scots pine or other organisms, we can meet null allele, short allele dominance, and polymerase slippage). The use of the specialized genotyping software is therefore strongly advised.

Many approaches to the conservation of genetic diversity, the exploration of plant-genetic resources, and the design of plant-improvement programs require a specific knowledge on the amount and distribution of genetic diversity within investigated species. The genetic information contained in DNA, particularly in microsatellite sequences, offers valuable input when it comes to the *in situ* and *ex situ* conservation of forest-genetic resources. Notwithstanding the intensive use and management of the species, very little is still known about the genetic variability of Scots pines in Europe. The present chapter attempted to give an introduction to the practical side of microsatellite analysis and the interpretation of genomic data obtained for Scots pine (*P. sylvestris*) populations in Poland.



## Acknowledgements

The results mentioned in this chapter are parts of the research funded by the General Directorate of State Forests (grant BLP-309). Many thanks are expressed to colleagues from the Forest Research Institute IBL Poland, especially Jolanta Bieniek, Małgorzata Borys, M.Sc., Dr Anna Zawadzka, Dr Jan Kowalczyk, Michał Zawadzki, M.Sc., and Jerzy Przyborowski involved in plant material collection and laboratory DNA analyses.

## Author details

Justyna Anna Nowakowska

Address all correspondence to: J.Nowakowska@ibles.waw.pl

Forest Research Institute, Laboratory of Molecular Biology, Sękocin Stary, Raszyn, Poland

## References

- [1] Hamrick JL. Response of forest trees to global environmental changes. *For. Ecol. Manag.* 2004;197:323–335. DOI:10.1016/j.foreco.2004.05.023.
- [2] Ahuja MR, Neale DB. Evolution of genome size in conifers. *Silvae Genet.* 2005;54:126–137.
- [3] Lexer C, Heinze B, Alia R, Rieseberg LH. Hybrid zones as a tool for identifying adaptive genetic variation in outbreeding forest trees: lessons from wild annual sunflowers (*Helianthus* ssp.). *For. Ecol. Manag.* 2004;197:49–64. DOI: 10.1016/j.foreco.2004.05.004.
- [4] Li Y-C, Korol AB, Fahima T, Beiles A, Nevo E. Microsatellites: genomic distribution, putative functions and mutational mechanisms: a review. *Mol. Ecol.* 2002;11:2453–2465. DOI: 10.1046/j.1365-294X.2002.01643.x.
- [5] Zhang DX, Hewitt GM. Nuclear DNA analysis in genetic studies of populations: practice, problems and prospects. *Mol. Ecol.* 2003;12:563–584. DOI: 10.1046/j.1365-294X.2003.01773.x.
- [6] Robledo-Arnuncio JJ, Smouse PE, Gil L, Alía R. Pollen movement under alternative silvicultural practices in native populations of Scots pine (*Pinus sylvestris* L.) in central Spain. *For. Ecol. Manag.* 2004;197:245–255. DOI:10.1016/j.foreco.2004.05.016.
- [7] Neale DB, Devey ME, Jermstad KD, Ahuja MR, Alosi MC, Marshall KA. Use of DNA markers in forest tree improvement research. *New For.* 1992;6:391–407. DOI: 10.1007/BF00120654.

- [8] DeVerno LL, Mosseler A. Genetic variation in red pine (*Pinus resinosa*) revealed by RAPD and RAPD-RFLP analysis. *Can. J. For. Res.* 1997;27:1316–1320. DOI: 10.1139/x97-090.
- [9] Soranzo N, Provan J, Powell W. Characterization of microsatellite loci in *Pinus sylvestris* L. *Mol. Ecol.* 1998;7(9):1260–1261.
- [10] Soranzo N, Alía R, Provan J, Powell W. Patterns of variation at a mitochondrial sequence-tagged-site locus provides new insights into the postglacial history of European *Pinus sylvestris* populations. *Mol. Ecol.* 2000;9:1205–1211. DOI: 10.1046/j.1365-294x.2000.00994.x.
- [11] Ribeiro MM, Mariette S, Vendramin GG, Szmidt E, Plomion C, Kremer A. Comparison of genetic diversity estimates within and among populations of maritime pine using chloroplast simple-sequence repeat and amplified fragment length polymorphism data. *Mol. Ecol.* 2002;11:869–877. DOI: 10.1046/j.1365-294X.2002.01490.x.
- [12] Nowakowska J. Genetic diversity of Scots pine (*Pinus sylvestris* L.) Polish provenances based on RAPD analysis. *Sylwan.* 2003;11:26–37.
- [13] Lefort F, Echt C, Streiff R, Vendramin GG. Microsatellite sequences: a new generation of molecular markers for forest genetics. *For. Genet.* 1999;6(1):15–20.
- [14] Wang Z, Weber JL, Zhong G, Tanksley SD. Survey of plant short tandem DNA repeats. *Theor. Appl. Genet.* 1994;88:1–6. DOI: 10.1007/BF00222386.
- [15] Kashi Y, Soller M. Functional roles of microsatellites and minisatellites. *Microsatellites: Evolution and Applications*. Goldstein DB, Schlötterer C, Eds., Oxford University Press, Oxford, Great Britain; 1999. p. 10–23. ISBN: 9780198504078.
- [16] Gur-Arie R, Cohen CJ, Eitan Y, Shelef L, Halleman EM, Kashi Y. Simple sequence repeats in *Escherichia coli*: abundance, distribution, composition, and polymorphism. *Gen. Res.* 2000;10:62–71. doi: 10.1101/gr.10.1.62.
- [17] Schmidt A, Doudrick RL, Heslop-Harrison JS, Shmidt T. The contribution of short repeats of low sequence complexity to large conifer genomes. *Theor. Appl. Genet.* 2000;101:7–14.
- [18] Karhu A, Dieterich JH, Savolainen O. Rapid expansion of microsatellite sequences in pines. *Mol. Biol. Evol.* 2000;17:259–265. ISSN: 0737-4038.
- [19] Echt CS, MayMarquardt P. Survey of microsatellite DNA in pine. *Genome.* 1997;40:9–17.
- [20] Buschiazzo E, Gemmell NJ. The rise, fall and renaissance of microsatellites in eukaryote genomes. *BioEssays.* 2006;28:1040–1050. DOI: 10.1002/bies.20470.
- [21] Pemberton JM, Slate J, Bancroft DR, Barrett JA. Non-amplifying alleles at microsatellites loci: a caution for parentage and population studies. *Mol. Ecol.* 1995;4:249–252. DOI: 10.1111/j.1365-294X.1995.tb00214.x.

- [22] Navascués M, Emerson BC. Chloroplast microsatellites: measures of genetic diversity and the effect of homoplasmy. *Mol. Ecol.* 2005;14:1333–1341. DOI: 10.1111/j.1365-294X.2005.02504.x.
- [23] Deforce DLD, Millecamps REM, Van Hoofstat D, Van den Eeckhout EG. Comparison of slab gel electrophoresis and capillary electrophoresis for the detection of the fluorescently labeled polymerase chain reaction products of short tandem repeat fragments. *J. Chromatogr. A.* 1998;806:149–155. DOI: 10.1016/S0021-9673(97)00394-4.
- [24] Delmotte F, Leterme N, Simon JC. Microsatellite allele sizing: difference between automated capillary electrophoresis and manual technique. *BioTechniques.* 2001;31:810–818.
- [25] Howells EJ, Willis BL, Bay LK, Van Oppen MJH. Microsatellite allele sizes alone are insufficient to delineate species boundaries in *Symbiodinium*. *Mol. Ecol.* 2016. DOI: 10.1111/mec.13631.
- [26] Scotti I, Vendramin GG, Matteotti LS, Scarponi C, Sari-Gorla M, Binelli G. Postglacial recolonization routes for *Picea abies* K. in Italy as suggested by the analysis of sequence-characterized amplified region (SCAR) markers. *Mol. Ecol.* 2000;9:699–708. DOI: 10.1046/j.1365-294x.2000.00911.x.
- [27] The European Bioinformatics Institute [Internet]. 2016. Available from: <http://www.ebi.ac.uk> [Accessed from 2016-07-05].
- [28] National Center for Biotechnology Information [Internet]. 2016. Available from: <http://www.ncbi.nlm.nih.gov> [Accessed from 2016-07-05].
- [29] Wiley Online Library [Internet]. 2016. Available from: <http://www.blackwell-synergy.com> [Accessed from 2016-07-05].
- [30] Kostia S, Varvio SL, Vakkari P, Pulkkinen P. Microsatellite sequences in a conifer, *Pinus sylvestris*. *Genome.* 1995;38:1244–1248. DOI: 10.1139/g95-163.
- [31] Chagné D, Chaumeil P, Ramboer A, Collada C, Guevara A, Cervera MT, Vendramin GG, Garcia V, Frigerio J-M, Echt C, Richardson T, Plomion C. Cross-species transferability and mapping of genomic and cDNA SSRs in pines. *Theor. Appl. Genet.* 2004;109:1204–1214. DOI: 10.1007/s00122-004-1683-z.
- [32] Zane L, Bargelloni L, Patarnello T. Strategies for microsatellite isolation: a review. *Mol. Ecol.* 2002;11:1–16. DOI: 10.1046/j.0962-1083.2001.01418.x.
- [33] González-Martínez SC, Robledo-Arnuncio JJ, Collada C, Díaz A, Williams CG, Alía R, Cervera MT. Cross-amplification and sequence variation of microsatellite loci in Eurasian hard pines. *Theor. Appl. Genet.* 2004;109:103–111. DOI: 10.1007/s00122-004-1596-x.

- [34] Leitch IJ, Hanson L, Winfield M, Parker J, Bennet MD. Nuclear DNA C-values complete familial representation in Gymnosperms. *Ann. Bot.* 2001;88:843–849. DOI: 10.1006/anbo.2001.1521.
- [35] Mariette S, Chagné D, Decroocq S, Vendramin GG, Lalanne C, Madur D, Plomion C. Microsatellite markers for *Pinus pinaster* Ait. *Ann. For. Sci.* 2001;58:203–206.
- [36] García-Gil MR, Floran V, Östlund L, Mullin TJ, Andersson Gull B. Genetic diversity and inbreeding in natural and managed populations of Scots pine. *Tree Gen. Gen.* 2015;11(28). DOI: 10.1007/s11295-015-0850-5.
- [37] Provan J, Soranzo N, Wilson NJ, Goldstein DB, Powell W. A low mutation rate for chloroplast microsatellites. *Genetics.* 1999;153:943–947.
- [38] Nowakowska JA. Genetic variation of Polish Scots pine (*Pinus sylvestris* L.) populations assessed with DNA polymorphism markers. Habilitation dissert. Instytut Badawczy Leśnictwa Ed., Sękocin Stary; 2007. 118 p. ISBN 978-83-878647-70-4 (in Polish, with abstract, summary, tables and figures in English.)
- [39] Belletti P, Ferrazzini D, Piotti A, Monteleone I, Ducci F. Genetic variation and divergence in Scots pine (*Pinus sylvestris* L.) within its natural range in Italy. *Eur. J. Forest Res.* 2012;131:1127–1138. DOI: 10.1007/s10342-011-0584-3.
- [40] Prus-Głowacki W, Stephan BR. Genetic variation of *Pinus sylvestris* from Spain in relation to other European populations. *Silvae Gen.* 1994;43:7–14.
- [41] Kremer A, Ronce O, Robledo-Arnuncio JJ, Guillaume F, Bohrer G, Nathan R, Bridle JR, Gomulkiewicz R, Klein EK, Ritland K, Kuparinen A, Gerber S, Schueler S. Long-distance gene flow and adaptation of forest trees to rapid climate change. *Ecol. Lett.* 2012;15:378–392. DOI: 10.1111/j.1461-0248.2012.01746.x.
- [42] Doyle JJ, Doyle JL. Isolation of plant DNA from fresh tissue. *BRL Focus.* 1990;12:13–15.
- [43] Nowakowska JA, Oszako T, Tereba A, Konecka A. Forest Tree Species Traced with a DNA-Based Proof for Illegal Logging Case in Poland. *Evolutionary Biology: Biodiversification from Genotype to Phenotype*, Pierre Pontarotti, Ed., Springer Publisher, vol. 19, 2015. p. 373–388. ISBN 978-3-319-19931-3.
- [44] Tibbits JFG, McManus LJ, Spokevicius AV, Bossinger G. A rapid method for tissue collection and high throughput isolation of genomic DNA from mature trees. *Plant Mol. Biol. Rep.* 2006;24: 81–91. DOI:10.1007/BF02914048.
- [45] Nowakowska JA. Application of DNA markers against illegal logging as a new tool for the forest guard service. *Folia For. Pol. Series A.* 2011;53(2):142–149.
- [46] Asif MJ, Cannon CH. DNA extraction from processed wood: a case study for the identification of an endangered timber species (*Gonystylus bancanus*). *Plant Mol. Biol. Rep.* 2005;23:185–192. DOI: 10.1007/BF02772709.

- [47] Bartlett JMS, Stirling D. A Short History of the Polymerase Chain Reaction. PCR Protocols. Methods in Molecular Biology 226 (2nd ed.) Humana Press Inc., Totowa, NJ. 2003. pp. 3–6. DOI: 10.1385/1-59259-384-4:3. ISBN 1-59259-384-4.
- [48] Sambrook J, Russell DW. Molecular Cloning. A Laboratory Manual. Cold Spring Harbor Laboratory Press, Cold Spring Harbor, New York, NY, USA, 2001. Vol. 2. ISBN 0-87969-577-3.
- [49] Nei M. Analysis of gene diversity in subdivided populations. Proc. Natl. Acad. Sci. USA. 1973;70(12):3321–3323.
- [50] Nei M. Estimation of average heterozygosity and genetic distance from a small number of individuals. Genetics. 1978;89:583–590.
- [51] Nowakowska JA, Sułkowska M. Capillary electrophoresis as useful tool in analysis *Fagus sylvatica* population genetic dynamics. Electrophoresis Book, Kiumars Ghowsi, Ed., Open Science INTECH, Croatia. p. 49–68. ISBN 978-953-51-2025-4.
- [52] Gömöry D, Paule L, Brus R, Tomović Z, Gračan J. Genetic differentiation and phylogeny of beech on the Balkan peninsula. J. Evol. Biol. 1999;12(4):746–754. DOI: 10.1046/j.1420-9101.1999.00076.x.
- [53] Peakall R, Smouse PE. GenA1Ex 6.5: genetic analysis in Excel. Population genetic software for teaching and research—an update. Bioinformatics. 2012;28:2537–2539. DOI: 10.1093/bioinformatics/bts460.
- [54] Garcia-Vallvé S, Palau J, Romeu R. Horizontal gene transfer in glycosyl hydrolases inferred from codon usage in *Escherichia coli* and *Bacillus subtilis*. Mol. Biol. Evol. 1999;16(9):1125–1134.
- [55] Poland—The State Forests in figures 2013 [Internet]. 2013. Available from: [www.lasy.gov.pl/publikacje/in-english/the-state-forests-in-figures-2013](http://www.lasy.gov.pl/publikacje/in-english/the-state-forests-in-figures-2013) [Accessed: 07-07-2016].
- [56] Forest Finland in brief 2003. Y. Sevola, Ed. The Finnish Forest Research Institute, Forest Statistics Information Service, Helsinki, Finland. p. 33.
- [57] Pivoriunas A. Cooperation of private forest owners: case study in Lithuania. Miskiniukyste. 2004;2(56):69–77.
- [58] Bradshaw RHW. Past anthropogenic influence on European forest and some possible genetic consequences. For. Ecol. Manag. 2004;197:203–212. DOI: 10.1016/j.foreco.2004.05.025.
- [59] Sinclair WT, Morman JD, Ennos RA. The postglacial history of Scots pine (*Pinus sylvestris* L.) in western Europe: evidence from mitochondrial DNA variation. Mol. Ecol. 1999;8:83–88. DOI: 10.1046/j.1365-294X.1999.00527.x.
- [60] Kremer A, Reviron MP. Dynamics and conservation of genetic diversity in forest ecosystems. For. Ecol. Manag. 2004;197:1–2. DOI: 10.1016/j.foreco.2004.05.001.

- [61] Petit RJ, Bialozyt R, Garnier-Géré P, Hampe A. Ecology and genetics of tree invasion: from recent introductions to quaternary migrations. *For. Ecol. Manag.* 2004;197:117–137. DOI: 10.1016/j.foreco.2004.05.009.
- [62] Gutiérrez JP, Royo LJ, Álvarez I, Goyache F. MolKin v2.0: a computer program for genetic analysis of populations using molecular coancestry information. *J. Heredity.* 2005;96(6): 718–721. DOI: 10.1093/jhered/esi118.
- [63] DendroUPGMA: A dendrogram construction utility [Internet]. 2016. Available from: <http://genomes.urv.cat/UPGMA/index.php> [Accessed from 2016-07-05].
- [64] Corander J, Waldmann P, Sillanpää MJ. Bayesian analysis of genetic differentiation between populations. *Genetics.* 2003;163:367–374.
- [65] Amarasinghe V, Carlson JE. The development of microsatellite DNA markers for genetic analysis in Douglas-fir. *Can. J. For. Res.* 2002;32:1904–1915. DOI: 10.1139/x02-110.
- [66] Powel W, Morgante M, McDevitt R, Vendramin GG, Rafalski JA. Polymorphic simple sequence repeat regions in chloroplast genomes: applications to the population genetics of pines. *Proc. Natl. Acad. Sci. USA.* 1995;92:7759–7763.
- [67] Echt CS, Vendramin GG, Nelson CD, Marquardt P. Microsatellite DNA as shared genetic markers among conifer species. *Can J. For. Res.* 1999;29:365–371. DOI: 10.1139/cjfr-29-3-365.
- [68] Shepherd M, Cross M, Maguire TL, Dieters MJ, Williams CG, Henry RJ. Transpecific microsatellites for hard pines. *Theor. Appl. Genet.* 2002;104:819–827. DOI 10.1007/s00122-001-0794-z.
- [69] Besnard G, Achere V, Faivre Rampant P, Favre JM, Jeandroz S. A set of cross-species amplifying microsatellite markers developed from DNA sequence databanks in *Picea* (*Pinaceae*). *Mol. Ecol. Notes.* 2003;3:380–383. DOI: 10.1046/j.1471-8286.2003.00456.x.
- [70] Žvingila D, Verbylaite R, Abraitis R, Kuusiene S., Ozolinčius R. Assessment of genetic diversity in plus tree clones of *Pinus sylvestris* L. using RAPD markers. *Baltic For.* 2002;8(2):2–7.
- [71] Auckland L, Bui T, Zhou Y, Shepherd M, Williams C. *Conifer Microsatellite Handbook*. Texas A&M University, College Station, TX, USA; 2002. 57 p.
- [72] Komulainen P, Brown GR, Mikkonen M, Karhu A, García-Gil MR, O'Malley D, Lee B, Neale DB, Savolainen O. Comparing EST-based genetic maps between *Pinus sylvestris* and *Pinus taeda*. *Theor. Appl. Genet.* 2003;107:667–678. DOI: 10.1007/s00122-003-1312-2.
- [73] Giertych M. Provenance Variation. *Biology of Scots Pine*. Sorus PAN Ed Poznań-Kórnik; 1993. p. 325–339.
- [74] Sperisen C, Büchler, Mátyás G, Anzidei M, Madaghiale A, Skrøppa T, Vendramin GG. Polymorphic tandem repeats in the chloroplast and mitochondrial genomes of Norway

spruce. Genetics and breeding of Norway spruce. Skrøppa T, Paule L, Gömöry D, Eds., Arbora Publisher, Zvolen, Slovakia; 1998: p. 15–24.

- [75] Morgante M, Felice N, Vendramin GG. Analysis of hypervariable chloroplast microsatellites in *Pinus halepensis* reveals a dramatic genetic bottleneck. Molecular tools for screening biodiversity: plants and animals. Karp A, Isaac PG, Ingram DS, Eds., Chapman and Hall, London, UK; 1997. p. 407–412. DOI: 10.1007/978-94-009-0019-6\_73.
- [76] Vendramin GG, Lelli L, Rossi P, Morgante M. A set of primers for the amplification of 20 chloroplast microsatellites in Pinaceae. Mol. Ecol. 1996;5(4):595–598. DOI: 10.1111/j.1365-294X.1996.tb00353.x.
- [77] Bucci G, Anzidei M, Madaghiele A, Vendramin GG. Detection of haplotypic variation and natural hybridisation in *halepensis*-complex pine species using chloroplast SSR markers. Mol. Ecol. 1998;7:1633–1643. DOI: 10.1046/j.1365-294x.1998.00466.x.
- [78] Gugerli F, Senn J, Anzidei M, Madaghiele A, Büchler U, Sperisen C, Vendramin GG. Chloroplast microsatellites and mitochondrial *nad1* intron 2 sequences indicate congruent phylogenetic relationships among Swiss stone pine (*Pinus cembra*), Siberian stone pine (*Pinus sibirica*), and Siberian dwarf pine (*Pinus pumila*). Mol. Ecol. 2001;10:1489–1497. DOI: 10.1046/j.1365-294X.2001.01285.x.
- [79] Dyer RJ, Sork VL. Pollen pool heterogeneity in shortleaf pine, *Pinus echinata* Mill. Mol. Ecol. 2001;10:859–866. DOI: 10.1046/j.1365-294X.2001.01251.x.
- [80] Ouborg NJ, Piquot Y, Van Groenendael JM. Population genetics, molecular markers and the study of dispersal in plants. J. Ecol. 1999;87(4):551–568. DOI: 10.1046/j.1365-2745.1999.00389.x.
- [81] Slate J. Quantitative trait locus mapping in natural populations: progress, caveats and future directions. Mol. Ecol. 2005;14(2):363–79. DOI: 10.1111/j.1365-294X.2004.02378.x.
- [82] Lasy na mapach—Bank Danych o Lasach [Internet]. 2016. Available from: [www.bdl.lasy.gov.pl/portal/mapy](http://www.bdl.lasy.gov.pl/portal/mapy) [Accessed from 05-07-2016].