

We are IntechOpen, the world's leading publisher of Open Access books Built by scientists, for scientists

4,800

Open access books available

122,000

International authors and editors

135M

Downloads

Our authors are among the

154

Countries delivered to

TOP 1%

most cited scientists

12.2%

Contributors from top 500 universities



WEB OF SCIENCE™

Selection of our books indexed in the Book Citation Index
in Web of Science™ Core Collection (BKCI)

Interested in publishing with us?
Contact book.department@intechopen.com

Numbers displayed above are based on latest data collected.

For more information visit www.intechopen.com



Ebola Virus's Glycoproteins and Entry Mechanism

Khadija Khataby, Yassine Kasmi,
Rahma Ait Hammou, Fatima Ezzahra Laasri,
Said Boughribi and My Mustapha Ennaji

Additional information is available at the end of the chapter

<http://dx.doi.org/10.5772/64032>

Abstract

Ebola virus glycoprotein (GP) is the only protein that is expressed on the surface of the virus. The GP proteins play critical roles in the entry of virus into cell and in the evasion of the immune system. The GP gene transcript to membrane GP is constituted of two subunits GP1 and GP2, and the secretory GP (sGP). The main function of GP1/2 is to attach virus to target cell's membrane, whereas sGP has multiple functions on Ebola pathogenesis, such as inactivate neutrophils through CD16b causing lymphocyte apoptosis and vascular dysregulation. There are many studies that focused on better understanding the GP mechanism and aim at developing new antibodies and drugs such as VSV-EBOV, cAd3-EBO Z, rVSVN4CT1 VesiculoVax, 'C-peptide' based on the GP2 C-heptad repeat region (CHR) targeted to endosomes (Tat-Ebo) and MBX2270. In this chapter, we discuss the Ebola viral glycoproteins, genomic organization, synthesis, and their roles and functions. On the other hand, we treat the mechanisms of pathogenicity associated with Ebola GPs.

Keywords: EBOLA, virus, glycoprotein (GP), entry, mechanism, pathogenesis, structure

1. Introduction

Since the beginning of the year 2012, cases of Ebola virus have been reported in four African countries: Guinea, Liberia, Sierra Leone and Nigeria. WHO announced the end of Ebola outbreak in January 2016 [1]; despite this, according to the WHO, new cases are declared later in Sierra Leone, Liberia and Guinea [2, 3]. What this highlights is that the risk of the Ebola

epidemic is still standing. The Ebola haemorrhagic fever weans and is often fatal in humans. It is caused by *Filoviridae*, citing the species Zaire Ebola virus (ZEBOV).

Ebola virus is a pathogenic agent of Ebola haemorrhagic fever; it is a single-stranded RNA with negative sense and with a genome length of approximately 18,920 nucleotides. Since it belongs to *Filoviridae*, its diameter is about 80 nm with a twisted filamentous form. Generally, the virus length is up to 1.1 μm [4], but particles of 14 μm were detected in the culture of liver tissue [5]. The viral RNA contains information about eight proteins, VP24, VP30, VP35, VP40, L, NP, sGP and GP1/2. Each of the protein expressed by EBOV is known for its multi-functionality that is why it is nominated as Swiss Army Knife, essentially VP35 and GP that present multi-functionality in the pathogenesis process and in the inhibition of immune responses in the host. EBOV is classified as a Category A priority pathogen by the National Institute of Allergy and Infectious Diseases (NIAID) and a Category A agent of bioterrorism by the Centers of Disease Control and Prevention (CDC) [6].

The principal characteristics of the Ebola virus is the presence of a heavily glycosylated GP on the external surface of viral membrane. Crystallographic studies revealed that GP on the viral surface exists in the trimeric form [7].

This chapter aims to provide a current overview on the treatment of GP of the Ebola virus, genomic organization, synthesis, their roles and functions, and the mechanisms of viral entry associated with GP and replication.

2. Phylogenetic information of Ebola virus

A total of 132 sequences are collected from the NCBI gene database. The samples were collected from the Makona river (80 sequences from Sierra Leone and 52 from Guinea), and they were collected in the period between 1 June 2014 and 30 August 2015. They underwent a global alignment and phylogenetic analysis by MEGA 6.4 and BEAST [8, 9].

Phylogenetic analysis reveals a greater genetic diversity with the presence of three distinct lines. The first line represents a set of sequences found only in Guinea, and that is most closely

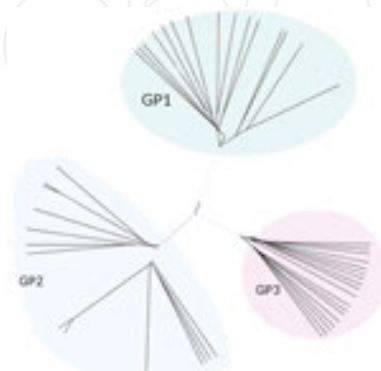


Figure 1. Phylogram of Ebola virus obtained with BEAST, the phylogenetic software based on Bayesian evolutionary analysis. The first cluster (GP1) contains sequences from Guinea alone. In second cluster (GP2), we may find sequences from Sierra Leone and Guinea. In third cluster (GP3), the sequences from Fore'cariah, Dalaba are collected.

related to viruses taken early in March 2014. The cluster found in the large Conakry region is relative to two other lines. The second cluster contains sequences from Sierra Leone and Guinea; it could be a reintroduction of Sierra Leone or Guinea streaming in related strains to those initially introduced in Sierra Leone. Finally, a third group of viruses is located in Conakry, Fore'cariah, Dalaba, and to a limited extent in Coyah. Several sequences from Sierra Leone are grouped within the third cluster. Such phylogenetic structure suggests that there have been multiple migrations of EBOV into Guinea from Sierra Leone [10, 11]. However, following the phylodynamic studies, the virus had accumulated a significant number of mutations, 7×10^{-4} substitutions per site per year [12]. **Figure 1** represents a phylogram of the Ebola virus.

3. Structural roles and genomic information on glycoprotein

The Ebola genome mainly consists of seven genes, which encode eight proteins. Genes are delimited by conserved transcriptional signals; each gene starts with an initiation site at 3' and ends with a (polyadenylation) stopover site. Zaire Ebola virus (EBOV) is a member of *Filoviridae* order of *Mononegavirales*. According to the ICTV (International Committee on Taxonomy of Viruses) classification, *Mononegavirales* order contains four families in addition to *Filoviridae*, which are *Bornaviridae*, *Nyamiviridae*, *Paramyxoviridae* and *Rhabdoviridae*.

Families of the *Mononegavirales* can be distinguished by the size of the genome and coding capacity, virion's morphology (filamentous, pleomorphic, or ball-shaped and bacilliform), viral pathogenesis and by its hosting organism. The nomenclature *Filoviridae* was changed several times for various reasons and also due to the nature of information discovered through the study of these viruses. The aim was to prepare a classification that reflects the knowledge and correct the international code of nomenclature [13]. Unfortunately, in the *Filoviridae* case, approaching ICTV has not been useful because both species and virus names had already been implemented in non-Latinized binomial form [14, 15]. The new nomenclature writes "*Zaire ebolavirus*" means the species "**Ebola virus**," which is a member of Zaire Ebola virus—and is the most common member. However, the abbreviation is "EBOV." The new classification also contains a new genre called "**Cuevavirus**," which is newly discovered and contains the species "*Lloviu cuevavirus*" [14].

The common characteristics of this family are as follows: a negative genome RNA, which is linear, single-stranded, mono-segmented and filamentous; the genes in genome are ordered in specific ways, always starting with gene for envelope protein (3'UTR) and finishing with gene for the RNA polymerase (5'UTR); the viral replication occurs after synthesizing anti-genome; RNA is stored within the helical nucleocapsid; and RNA polymerase gene is the largest gene of *Filoviridae* [16].

Besides the common characteristics, there are others that allow the distinctions between the genomes of *Filoviruses* from *Mononegavirales* order, such as the location of overlapping genes in *Filoviridae*. Overlaps are of the length 18–20 bases and are limited to the conserved sequences determined for transcription signals [17]. The bioinformatics analysis of the amino acids'

sequences of the protein from *Filoviridae* has shown different degrees of identities. The analysis has shown that the nucleoprotein (NP) is the most conserved protein with a significant identity with the exception of the C-terminal portion. The rates of conservation for other proteins are as follows: 33% for VP35, 27% for VP40, 34% for GP, 33% for VP30 and 37% for VP24 [17–19].

In **Figure 2**, the genome of EBOV is shown schematically. From this scheme it is evident that the fourth gene from the 3' of the viral genome encodes for glycoprotein (GP). This gene contains two reading frames: GP is one of the genes that encode for two mRNA – ORF I of the GP gene encodes for an sGP of about 50–70 kDa (it is non-structural glycoprotein that is efficiently secreted by infected cells) and ORF II encodes for a transmembrane glycoprotein of 120–150 kDa. The length of this gene is about 2406 nucleotides and is located between nucleotide 5900 and 8308. It is located before the VP40 gene and after the VP30 gene.

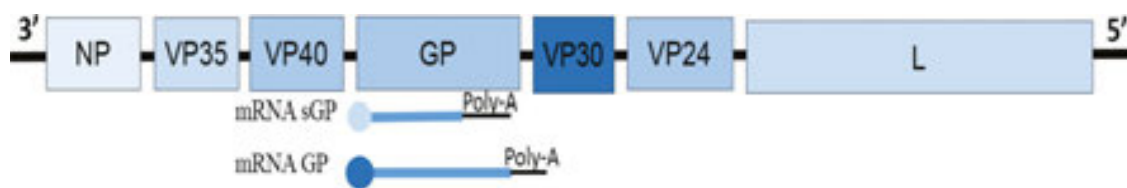


Figure 2. The full length genome of Ebola is about 19,000 base, where L is the length of the gene and is more conserved than the VP40, which is the more polymorphisized gene; however, the GP is within an average polymorphism. The sequence 6.039–6.923 coding for the GP1 is followed by polyadenine before the GP2 sequence in position 6.924–8.068.

The GP gene is localized between the nucleotides 5883 and 8288, where the mRNA of small non-structural secreted glycoprotein is encoded between the regions 6022 and 7116; however, the membrane GP is encoded by the regions 6022 and 8051 of nucleotides, where the region 6022–6906 is responsible for the subunit GP1 and the nucleotide sequence form 6906 to 8051 in the EBOV's genome coding is responsible for GP2; here we observed that for sGP and GP1/2 the coding starts separately.

The GP gene advances by conserved transcription start and stop signals: “CUACUUC UAAUU” as the start transcription signal for nucleotides 5883 and 5894, and “UAAUUCU” as the stop transcription signal. The end of the gene of GP containing a region encoding (UUUUUU) or including that of the GP gene (UAAUUCUUUUU) is typically sited in the region 8278–8288. It is plausible to think that the purpose of these poly U's into the genome, and these sites, is to form a poly-adenine during the transcription for retaining the mRNA and forming a premature protein [19].

A major difference between the Ebola and Marburg species has been shown with regards to the GP gene. In contrast to Ebola in which the genome contains information about two different forms of GP (sGP and GP), the GP gene of Marburg only codes a single GP.

The work of Sullivan et al. [20] has dismissed that a single mutation in the position 77 or 121 in the sequence of GP2 is able to influence the cytotoxicity and the immunogenicity of the virus. A post-transcriptional modification is also able to have the same effect [20]. The post-transcriptional change may be due to the effects of prophylactic drugs or antibodies that are specifically reactive with the GP2 [20]. The structure of EBOV GP and its interaction with the

human antibody KZ52 is shown in **Figure 3**. Therefore, the GP1 subunit of GP binds with the GP2 subunit by a non-covalent bond; therefore, the residues of GP at the positions 266 and 476 do not significantly affect viral entry [21].

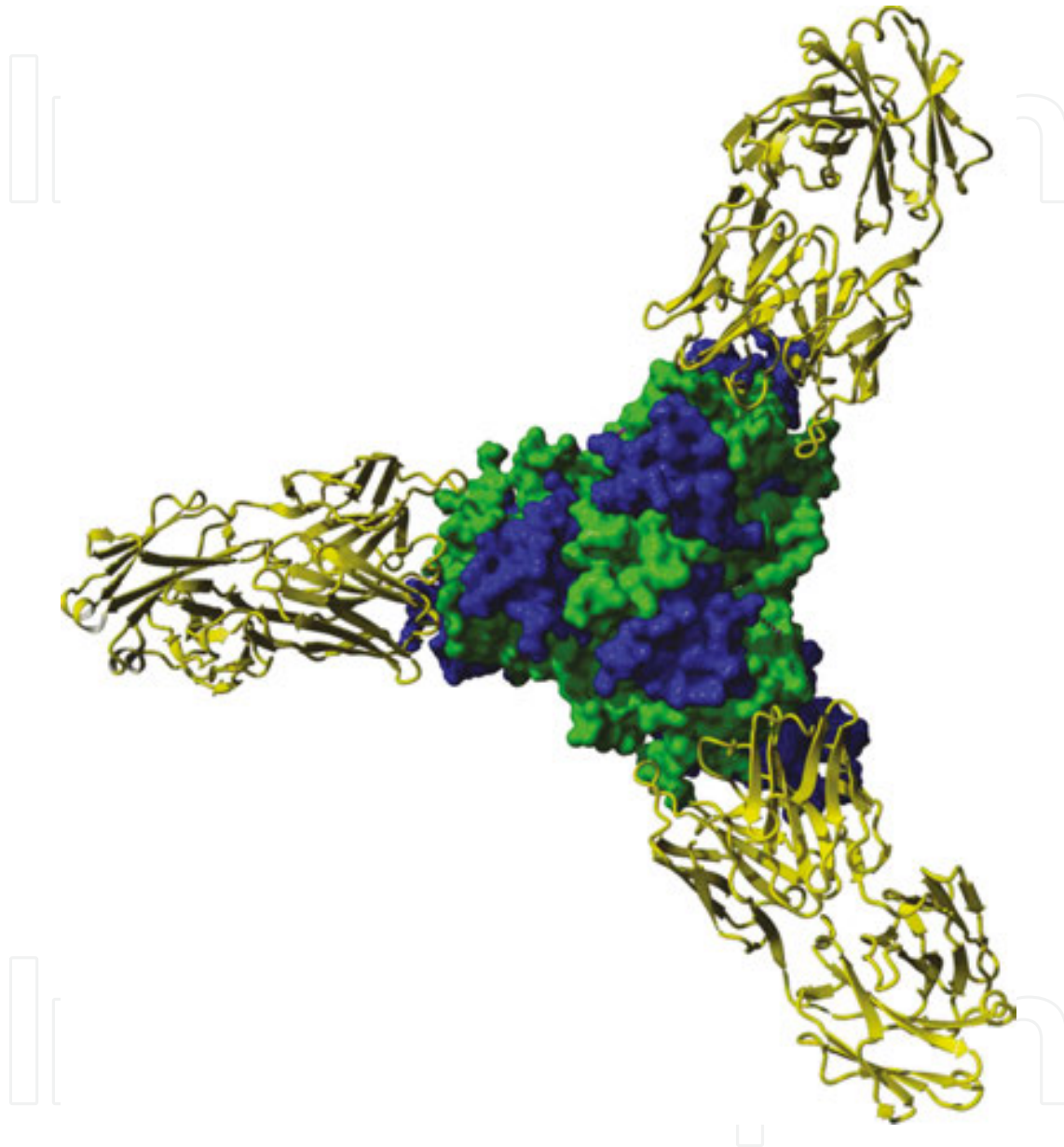


Figure 3. The Ebola virus glycoprotein has a calyx structure-like tribal as it is demonstrated by the crystal structure. According to the crystal structure of the protein, it is shown that three subunits of GP1 (blue) are bound to three GP2's subunits (green). In yellow it is shown that the human antibody KZ52 interacted with the GP at the base of the chalice [7, 14].

Multiple studies have shown that the GP gene products have the following multiple roles in the process of pathogenesis:

- The binding to the receptor is performed by the GP1 subunit whereas the GP2 subunit is responsible for the fusion and viral entry [22].

- Cytopathic effects: cell rounding and detachment.
- The EBOV secretory GP is incriminated in the provocation of B and T lymphoid apoptosis, but an investigation suggests that the soluble GP has no role in apoptosis [23]. It is also involved in antigenic subversion as well as restoring the barrier function of endothelial cells [6].

4. Synthesis of GP and maturation

4.1. The transmembrane glycoprotein GP1/2

EBOV GP has 676 amino acids in length with an apparent molecular weight of 150 kDa. The glycoprotein is synthesized as a precursor of pre-GP (or GP0) considering the length of the gene. A series of post-translational events leads to the maturation of the viral glycoprotein, *N*-glycosylation of the protein in the endoplasmic reticulum and the *O*-glycosylation in the Golgi. The pre-GP precursor is finally cleaved in the trans-Golgi compartment by a protease, furin, into two subunits: extracellular GP1(501 amino acids) and the GP2 transmembrane subunit (175 amino acids), which are interconnected together by disulphide bridges [24]. GP plays a role in the pathogenesis through regulation of the adaptive response. It is at the origin of [24]

- reduction with the availability of adhesion molecules;
- disruption of the presentation of the viral antigens to lymphocytes; and
- glycoproteins GP1 and GP2 have immunosuppressive motifs.

4.2. The secretory glycoprotein (sGP)

We hypothesize that the alteration of the homeostasis system and vascular system observed during Ebola virus disease could be, at least in part, caused by these soluble glycoproteins [25].

Recent works show that the source of the expression of GP1/2 or sGP is the ribosomal slippage process, where eight adenines nucleotides play an important role in the inversion of the expression of sGP and GP1/2. If the transcription complex reads only seven adenines, it encodes for the secretory GP, while the reading of the eight adenines leads to the transcription of the pre-GP1/2 by dint of two disulphide-linked subunits GP1 and GP2. **Figure 4** illustrates this translational frameshifting or ribosomal frameshifting shown in the Ebola virus GP gene [26].

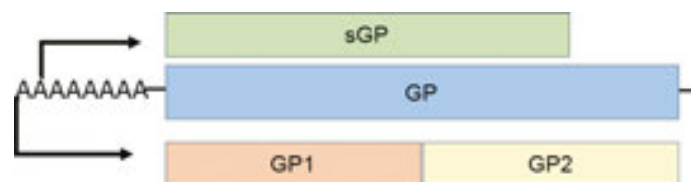


Figure 4. Illustration of the translational frameshifting of the GP gene due to the open reading frame.

5. Viral cycle and pathogenicity

The pathogenesis mechanism of the Ebola virus begins with the infection of the immune system's cells such as macrophages, dendritic cells (DCs) and monocytes, which are the first that come to contact with the viral particles. An alteration of interferon's production is observed in the infected cells, and the level of alteration is different from one cell to another. DCs and monocytes are the cells that show important level of alterations and, consequently, the INF production level decreases significantly. Furthermore, lymphocyte apoptosis and a global dysfunction of specific immune system's cells are observed with the increase of viral burden. In addition, the virus is responsible for other dysfunctions such as neutrophils inactivation, induction of apoptosis, inhibitor of immune response, and involvement in the process of viral entry in epithelial cells, vascular dysregulation and evasion [24, 27, 28]. The spread of virus throughout the body including the vital organs with immune system dysfunction leads to death.

The Ebola virus attacks the whole body causing increasing disseminated intravascular coagulation that degrades quickly the haemostasis and the functioning of vital organs. Infection destroys the endothelial cells, mononuclear phagocytes (monocytes, macrophages, dendritic cells, mast cells) and hepatocyte [29]. The mechanism of pathogenicity and the viral cycle can be divided into three phases:

- State extracellular and penetration, which cited the paramount role of the GP and GSP.
- State intracellular and the role of replication complex.
- Roles of VP24, VP40 and VP35 in the evasion of the immune system.

5.1. Target cells and receptors

The tropism of the Ebola virus depends on the expression of the receptor at the entry of the virus by the target cell. Several receptors of *Filoviridae* were determined.

The Ebola GP is bound to the C-type lectins as DC-SIGN, L-SIGN and hMGL expressed by monocytic, dendritic and macrophage cells [30–33]. The virus uses other ubiquitous molecules expressed by non-monocytic cells to internalize the target cells too [34]. The Ebola virus also uses a process called antibody-dependent enhancement (ADE) to attach the host cells and facilitate the entry [35]. It is shown that the GP binds with the IgG Fc receptor IIIb and forms a cross-linking virus-antibody-complement complex to Fc γ III, which explains the rapid spread of virus throughout the body (liver, brain, heart and endothelial cell) [35]; other study demonstrated that T-cell immunoglobulin and mucin domain 1 are receptors for the Ebola virus [35].

The Ebola virus infects most types of cells. However, macrophages and dendritic cells allow a strong replication and spread of the virus through the lymph and blood circulatory system. Thus, the virus reaches lymph nodes, liver and spleen, and spreads to other tissues.

5.2. Extracellular role of GP

The infective dose of EBOV is about 1–10 virion by aerosol in non-human primates. Despite this small amount of the virus, the formation and composition of the virion allows it to cause problems for the infected bodies.

However, after infection, it tries to prevent and interfere with the immune response via glycoproteins EBOV (GP), which is one of the reasons why the Ebola virus is fatal. The EBOV glycoprotein is the only viral protein expressed on the surface of the virion and is essential for binding to host cells and the catalysis of membrane fusion in addition to other roles of pathogenicity. The GP is combined with carbohydrates that help in the prevention of the immune system; also, the coating of the protein in a sweet layer makes it more difficult for the immune system to identify that a virus is present. On the other hand, the GP released into the intracellular medium inhibited host antibodies. It is also accompanied by the rapid neutralization of certain populations of T lymphocytes by a super-antigen effect. The GP is the essential protein in the mechanism of penetration. The GP-secreted/transmembrane GP inhibit the effect of neutralization of the natural antibodies (Ab), thanks to the carbohydrates combined with GP. The GP related to Ab easily gets attached on the cell membrane by C1q (thanks to the complement immune). This attachment facilitates and promotes deposition on host cell and this is followed by the penetration of the virus via the macropinosome pathway (this is the same capture solute of intercellular lipid lane) to the cell. Moreover, citing the possibility of using the protein G and calthrin, it indicates the role of the actin in the penetration of virus and suggests that the virus promotes, locates and retakes a large part of it action by interactions (Figure 5).

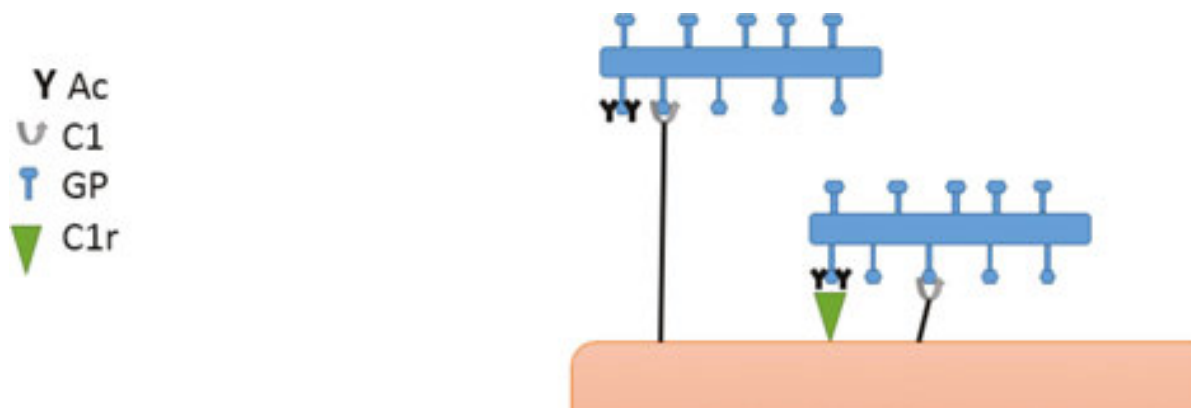


Figure 5. The mechanism of recognition and virus entry. GP binds to the antibodies of unknown site in the Fab regions. C1q complement allows the binding of the antibody bound to the virus with the target cells. The internalization of virus is the objective of multiple receptors known to the GP, they are of relatively non-specific type.

The GP binds with neutrophils and endothelial cells by the DC-SIGN (dendritic-cell-specific ICAM3-grabbing non-integrin) and L-SIGN (liver and lymph node SIGN), which provide links

to cell-GP via carbohydrate determinants. These bonds formed with the neutrophil receptor CD16 cause a significant reduction in the signal CR3 and Fc γ receptor II B, avoiding virus clearance. It has been shown that the strong pro-inflammatory responses were induced by the commitment of the EBOV GP with the TLR-4 and by the activation of the NF- κ B transcription factor. The GP is responsible for cytotoxicity on endothelial cells by secretion of enzymes, proteolytic endosomes (such as cathepsin), that cause the destruction of the vascular endothelium and increase in vascular permeability and haemorrhagic signs.

In addition, the GP also binds with multiple nearby IgG, which allows the binding of C1 to the Fc region of antibodies that is thermo labile, and interacts with the cell surface molecules. This complex consists of C1q and two pro-enzymes of serine protease, C1r and C1s [26], which allow the virus to bind to cell membranes. At that time the virus enters and internalizes the cell via the macropinocytosis [36] (**Figure 6**).

The amount of BST2 into cell does not change but the surface of BST2 decreases in the presence of the GP. This explains that the GP hides the BST2 receptors in its absence, and VP40 that commune-precipitates and co-localizes binds with BST2. This reveals that GP plays a role in the inhibition of this interaction [37].

5.3. Intracellular action of GP

Macrophages and dendritic cells are the first to be infected, but the viruses can infect most cell types with the notable exception of lymphocytes and other non-adherent cells [38]. Several researches have shown that the EBOV's binding with the receptors is relatively non-specific. For example, EBOV may also attach to C-type lectins, which interact with glycans on EBOV GP as well as on phosphatidylserine (PtdSer) receptors which interacts with the viral envelope, which leads to a better EBOV entry [39, 40]. PtdSer receptors include Gas6 or protein S and TAM family receptors (TYRO3, AXL and MER).

It is suggested that EBOV enters cells through endocytosis clathrin [41]. The typical architecture of Ebola virions (length 1–2 μ m, diameter 80–100 nm) is larger than the diameter of the clathrin-coated pits (85–110 nm).

It was found that their internalization was independent of clathrin- or caveolae-mediated endocytosis, but they co-localized with sorting nexin (SNX) 5 [42]. Once it is internalized, the virus must be carried in an intracellular compartment containing the factors essential for the activation of GP. The virus is initially inside the cell and in macropinosomes. The proteases cathepsin B and cathepsin L cysteine cleave GP and remove over 60% of the peptide mass, while interacting with NPC1 GP1 they intended to promote fusion of the viral membrane with the membrane of the bladder, accompanied with a pH drop in macropinosomes announcing the end of this step, which causes the fusion of the membrane of the host to the virus. Then, the complex transcription is released first, followed by the release of the viral genome [37, 43] (**Figure 6**).

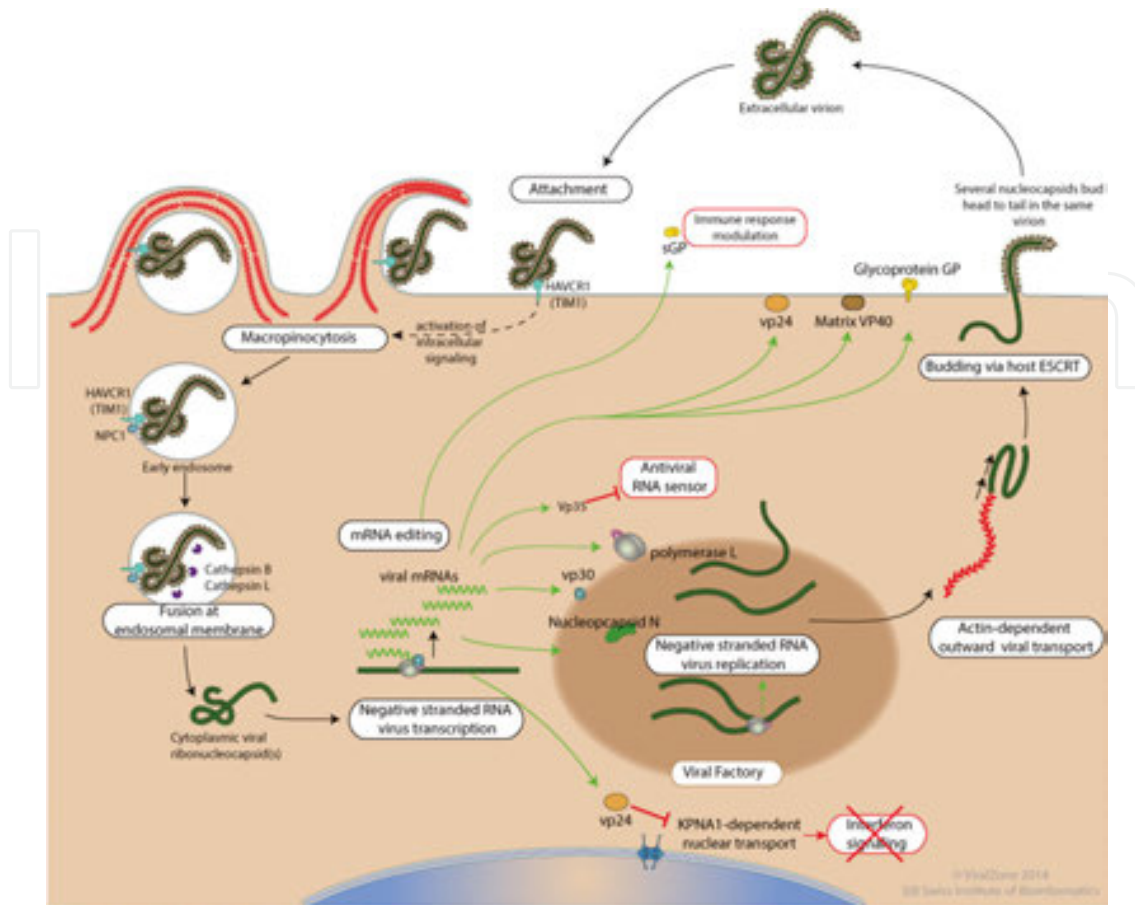


Figure 6. The diagram summarizes the virus entry mechanism and the various stages of internalization and replication. After attachment of the virus to the cell membrane, it activates the formation of macropinosomes via intracellular signals including the role of HAICR1 (TIM1), which recently has demonstrated the roles of the TIM-1 as a receptor or a cofactor for entry of Ebola virus. Moreover, the expression of endogenous TIM-1 reduced in very permissive cell lines leads to a reduction of the infectivity of Ebola virus [44]. Cleavage of the GP via Cathepsin B and L allows the fusion of endosomal membrane with virus causing the release of virus into the cytoplasm. By order, the VP30, VP35 and L are the first that are released into the cytoplasm and the viral genome negative sb RNA (Image from ViralZone2014 [45]).

Transcription and replication complex, VP35, N and L ensure the transfer of RNA⁻ to RNA⁺ for transcription and translation of viral genome. The first step is the activation of the transcription complex by the fixation of zinc in the active site (70–90) of co-activator VP30. The VP30 binds with VP35, L and N to start the transcription and translation. The mRNAs are translated using host ribosomes. At this point, we can say that *filoviridae* are independent in their replication machinery and they need only a transcriptional signal (zinc and ribosomes) from the host cell.

The maturation of the GP track in the Golgi apparatus, where the GP sequence is cleaved into GP1 and GP2, is expressed on the surface of the cytoplasmic membrane and sGP.

The VP35, VP24 and VP40 play roles in the inhibition of immune responses by inhibition of the translation and signaling of antiviral genes by the succession of kinase-phosphorylation reactions.






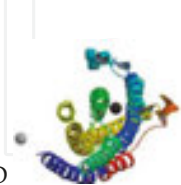
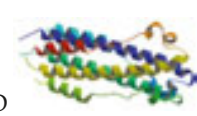
PDB-ID	Studied system	Macromolecule content	Experimental data
5F18	 <p>Structural basis of Ebola virus entry: viral glycoprotein bound to its endosomal receptor Niemann-Pick C1 Wang, H. (2016) <i>Cell</i> 164: 258–268</p>	Niemann-Pick C1	Method: X-ray diffraction Resolution: 2.00 Å Residue Count: 256 DOI: 10.2210/pdb5f18/pdb
5F1B	 <p>Structural basis of Ebola virus entry: viral glycoprotein bound to its endosomal receptor Niemann-Pick C1 Wang, H. (2016) <i>Cell</i> 164: 258–268</p>	GP1, GP2, Niemann-Pick C1	Method: X-ray diffraction Resolution: 2.30 Å Residue Count: 544 DOI: 10.2210/pdb5f1b/pdb
3VE0	 <p>Crystal structure of Sudan Ebolavirus Glycoprotein (strain Boniface) bound to 16F6 Bale, S., <i>et al.</i> (2012) <i>Viruses</i> 4: 447–470</p>	Envelope glycoprotein, 16F6 Antibody chain A,B	Method: X-ray diffraction Resolution: 3.35 Å Residue Count: 897 DOI: 10.2210/pdb3ve0/pdb
3CSY	 <p>Crystal structure of the trimeric prefusion Ebola virus glycoprotein in complex with a neutralizing antibody from a human survivor Lee, J.E., <i>et al.</i> (2008) <i>Nature</i> 454: 177–182</p>	Fab KZ52 heavy chain Fab KZ52 light chain Envelope glycoprotein GP1 Envelope glycoprotein GP2	Method: X-RAY DIFFRACTION Resolution: 3.40 Å Residue Count: 3632 DOI: 10.2210/pdb3csy/pdb
2QHR	 <p>Crystal structure of the 13F6-1-2 Fab fragment bound to its Ebola virus glycoprotein epitope. Lee, J.E. <i>et al.</i> (2008) <i>J. Mol. Biol.</i> 375: 202–216</p>	13F6-1-2 Fab fragment heavy chain 13F6-1-2 Fab fragment V	Method: X-RAY DIFFRACTION Resolution: 2.00 Å Residue Count: 451 DOI: 10.2210/pdb1qhr/pdb
1EBO	 <p>Crystal structure of the Ebola virus membrane-fusion subunit, GP2, from the envelope glycoprotein Weissenhorn, W. <i>et al.</i> (1998) <i>Mol. Cell</i> 2: 605–616</p>	Envelope glycoprotein GP2	Method: X-RAY DIFFRACTION Resolution: 3.00 Å Residue Count: 786 DOI: 10.2210/pdb1ebo/pdb
2EBO	 <p>Core structure of GP2 from Ebola virus Malashkevich, V.N. <i>et al.</i> (1999) <i>Proc. Natl. Acad. Sci. USA</i> 96: 2662–2667</p>	Envelope glycoprotein GP2	Method: X-RAY DIFFRACTION Resolution: 1.90 Å Residue Count: 222 DOI: 10.2210/pdb2ebo/pdb

Table 1. The collection of crystallographic structures related to Ebola's GP.

When the complex polymerase binds along the RNA template, the polymerase complex stops and is re-introduced at each junction of genes and transcription, thus individual genes appear sequentially in their 3'–5' order. The region 3' in the genome and anti-genome viral contains promoter's sites of replication for positive and negative sense RNA synthesis; they are approximately 176b [46]. The virus acts on microtubules and immunosuppressive genes to inhibit cell division. As the number of virions increases, it causes a burst of the host cell and then death or apoptosis due to the speed of the replication of virions, which are approximately 109 plaque-forming units (PFUs) in tissue during 7–10 days [26].

The spread of the virus in the body and vital organs causes haemorrhage and fever due to unskilled hyper activation of cytokines via transmembrane GP, and the activity of the NK causes diarrhoea because of the infection of digestive cells of the system. In addition, the pneumocystis, hepatocytes and cardiovascular cell infection accelerates the death of the patient.

5.4. Strategies for the inhibition of the *Ebola virus*

Several methods can be used to inhibit *filoviridae* and more particularly the glycoprotein. The inhibition of the GP induces entry cell inhibition and then limited viral infection. **Table 1** shows different crystalline forms of GP with cellular proteins, which develop the pathology and suggest a site to inhibit. Inhibitors must be able to inhibit the active site of GP1 or both active sites of GP2. The inhibitors may be antibodies or small molecules that interact with EBOV proteins in the way to limit its action. The EBOV has the ability to use multiple ways as immune pathway, therefore it is important to design inhibitor or cocktail of inhibitors that inhibit multiple targets at the same time. In our opinion, the best way to reduce devastating action of EBOV is the collective inhibition of GP and VP30. The inhibition of GP is to reduce the side effects caused by the GP. Many antibodies and inhibitors were developed, and some of them during clinical trials [47]. However, the inhibition of VP30 is also the best way to inhibit the replication process and then remove the virus via mRNA degradation by RNAase.

6. Biosecurity, biosafety and Ebola virus

A good understanding of the mechanisms of the virus' action allows us to manipulate the viruses in the level of biosafety, which is lower than BSL-4. The virus is composed of two complementary and essential units for the infectious act, genome and VP30, VP35, VP40 and L proteins; merging of genome with these four proteins is capable of inducing infection. As Ebola is a negative sense single-stranded RNA virus, the isolation of their genome from its microenvironment composed of four proteins cannot trigger a viral reaction. As such Ebola cannot synthesize DNA genome, therefore, its cDNA copy is synthesized only in a laboratory, in which all manipulation conditions are easily manageable.

The best way to master and control the transcription and translation processes in the laboratory is by not allowing a transcription/translation of the total genome. Moreover, by isolating the proteins from their genome and other proteins, the pathogenic effects can be stopped. The

pathogenic effect is caused by the cooperation and integration of different proteins that make up the genome of the viruses; however, the loss of a single protein causes the inhibition of virus by losing their genetic information via the degradation of cellular RNA as in the case of VP30.

It is possible to clone cDNA in *E. coli* in the BSL-2 laboratory [52, 53], which is consistent with the approach outlined in the BMBL and is responsible for developing and implementing an appropriate biosecurity measure. By cloning the cDNA of a gene, it is possible that it will accelerate the scientific research process and help in discovering new drugs. The study of individually cloned altered proteins is also possible in animals' models.

7. Conclusions

Based on the data presented in this chapter, Ebola has developed multiple pathways and modes for the evasion of the immune system and internalization in target cells. Further studies are necessary for a good understanding of the entry mechanism. However, the specific proteins of virus or even the cDNA genome disassociated of proteins can be studied in BSL-2 because the effects of virus depends on the presence of genome associated with structural and functional proteins, which allows to study the virus in laboratories at biosafety level 3 or 2. They may even accelerate the process of finding new inhibitors by pharmaceutical and vaccination companies.

Acknowledgements

The authors thank the Ministry of Higher Education, University Hassan II of Casablanca, Faculty of Sciences and Technics and the Laboratory of Virology, Microbiology, Quality and Biotechnologies/ Ecotoxicology & Biodiversity-Team of Virology, oncology and medical Biotechnologies.

Author details

Khadija Khataby, Yassine Kasmi, Rahma Ait Hammou, Fatima Ezzahra Laasri, Said Boughribi and My Mustapha Ennaji*

*Address all correspondence to: m.ennaji@yahoo.fr

Laboratory of Virology, Microbiology, Quality and Biotechnologies/ Ecotoxicology & Biodiversity, Faculty of Sciences and Techniques, University Hassan II of Casablanca, Casablanca, Morocco

References

- [1] <http://www.who.int/mediacentre/news/releases/2016/ebola-zero-liberia/en/consulted>, 20 April 2016.
- [2] <http://apps.who.int/ebola/current-situation/ebola-situation-report-30-march-2016>
- [3] <http://who.int/mediacentre/news/statements/2016/liberia-ebola/en/>
- [4] Gatherer, D. The 2014 Ebola virus disease outbreak in West Africa, published online ahead of print May 2, 2014. DOI: 10.1099/vir.0.067199-0, J Gen Virol May 2014 Vir. 0.067199-0, Received 22 April 2014. Accepted 28 April 2014.
- [5] Geisbert, T. W., & Jahrling, P. B. (1995). Differentiation of Filoviruses by electron microscopy. *Virus Research* 39(2–3): 129–150. PMID 8837880.
- [6] De la Vega, M. A., Wong, G., Kobinger, G. P., & Qiu, X. (2015). The multiple roles of SGP in Ebola pathogenesis. *Viral Immunology*, 28(1): 3–9.
- [7] Lee, J. E., Fusco, M. L., Hessel, A. J., Oswald, W. B., Burton, D. R., & Saphire, E. O. (2008). Structure of the Ebola virus glycoprotein bound to an antibody from a human survivor. *Nature*, 454(7201): 177–182.
- [8] Drummond, A. J., Suchard, M. A., Xie, D., & Rambaut, A. (2012). Bayesian phylogenetics with BEAUti and the BEAST 1.7. *Molecular Biology and Evolution* 29: 1969–1973. Full text.
- [9] Tamura, K., Dudley, J., Nei, M., & Kumar, S. (2007). MEGA4: Molecular Evolutionary Genetics Analysis (MEGA) software version 4.0. *Molecular Biology and Evolution* 24: 1596–1599. (Publication PDF at <http://www.kumarlab.net/publications>).
- [10] Baize, S., Pannetier, D., Oestereich, L., Rieger, T., Koivogui, L., Magassouba, N. F., ... & Tiffany, A. (2014). Emergence of Zaire Ebola virus disease in Guinea. *New England Journal of Medicine*, 371(15), 1418–1425.
- [11] Dudas G, Rambaut A (2014) A phylogenetic analysis of Guinea 2014 EBOV Ebolavirus outbreak. *PLoS Curr* 6: 1229–123
- [12] Carroll, S. A., et al. (2013). Molecular evolution of viruses of the family Filoviridae based on 97 whole-genome sequences. *Journal of Virology*. 87: 2608–2616. DOI:10.1128/JVI.03118-12
- [13] King, A. M. Q., Adams, M. J., Carstens, E. B., & Lefkowitz, E. J. (2011). The international code of virus classification and nomenclature. In: King, A. M. Q., Adams, M. J., Carstens, E. B., & Lefkowitz, E. J. (editors). *Virus taxonomy—Ninth Report of the International Committee on Taxonomy of Viruses*. Elsevier/Academic Press, London, pp. 1273–1277.
- [14] Kuhn, J. H., Becker, S., Ebihara, H., Geisbert, T. W., Johnson, K. M., Kawaoka, Y., Lipkin, W. I., Negredo, A. I., Netesov, S. V., Nichol, S. T., Palacios, G., Peters, C. J., Ten-Orio, A., Volchkov, V. E., Jahrling, P. B. (2010). Proposal for a revised taxonomy of the family

- filoviridae: classification, names of taxa and viruses, and virus abbreviations. *Archives of Virology* 155 (12): 2083–2103. DOI: 10.1007/S00705-010-0814-X. PMC 3074192. PMID 21046175
- [15] Bukreyev, A. A., Chandran, K., Dolnik, O., Dye, J. M., Ebihara, H., Leroy, E. M.,... & Kuhn, J. H. (2014). Discussions and decisions of the 2012–2014 International Committee on Taxonomy of Viruses (ICTV) Filoviridae Study Group, January 2012–June 2013. *Archives of Virology*, 159(4): 821–830.
- [16] Pringle, C. R. (1997). The order mononegavirales-current status. *Archives of Virology* 142.11: 2321–2326.
- [17] Bukreyev, A. A., Belanov, E. F., Blinov, V. M., & Netesov, S. V. (1995). Complete nucleotide sequences of Marburg virus genes 5 and 6 encoding vp30 and vp24 proteins. *Biochemistry and Molecular Biology International* 35: 605–613.
- [18] Sanchez, A., Kiley, M. P., Klenk, H. D., & Feldmann, H. (1992). Sequence analysis of the marburg virus nucleoprotein gene: comparison to Ebola virus and other non-segmented negative-strand RNA viruses. *Journal of General Virology* 73: 347–357.
- [19] Volchkova, V. A., Vorac, J., Repiquet-paire, L., Lawrence, P., & Volchkov, V. E. (2015). Ebola virus GP gene polyadenylation versus RNA editing. *Journal of Infectious Diseases*, JIV150.
- [20] Sullivan, N., Chakrabarti, B., Yang, Z. Y., Pau, M. G., Goudsmit, J., & Nabel, G. (2015). U.S. Patent No. 9,012,618. Washington, DC: U.S. Patent and Trademark Office.
- [21] Manicassamy, B., Wang, J., Jiang, H., & Rong, L. (2005). Comprehensive analysis of Ebola virus GP1 in viral entry. *Journal of Virology*, 79(8): 4793–4805.
- [22] Takada, A., Robison, C., Goto, H., Sanchez, A., Murti, K. G., Whitt, M. A., & Kawaoka, Y. (1997). A system for functional analysis of Ebola virus glycoprotein. *Proceedings of the National Academy of Sciences USA* 94: 14764–14769.
- [23] Russier, M. (2013). Cellules NK et fièvres hémorragiques virales: étude de leur rôle dans la mise en place des réponses immunes et dans la pathogenèse lors de l'infection par les virus lassa et ebola. Doctoral Dissertation, école normale supérieure de lyon-ens Lyon.
- [24] Escudero-perez, B., Volchkova, V. A., Dolnik, O., Lawrence, P., & Volchkov, V. E. (2014). Shed GP of Ebola virus triggers immune activation and increased vascular permeability. *PLOS Pathogens* 10(11): e1004509.
- [25] Mohan, G. S., Li, W., Ye, L., Compans, R. W., & Yang, C. (2012). Antigenic subversion: a novel mechanism of host immune evasion by Ebola virus. *PLoS Pathogens* 8(12): e1003065.
- [26] Mohamadzadeh, M., Chen, L., & Schmaljohn, A. L. (2007). How Ebola and Marburg viruses battle the immune system. *Nature Reviews Immunology* 7(7): 556–567.

- [27] Mohamadzadeh, M., Coberley, S. S., Olinger, G. G., Kalina, W. V., Ruthel, G., Fuller, C. L.,... & Schmaljohn, A. L. (2006). Activation of triggering receptor expressed on myeloid cells-1 on human neutrophils by Marburg and Ebola viruses. *Journal of Virology* 80(14): 7235–7244.
- [28] Geisbert, T. W., Young, H. A., Jahrling, P. B., Davis, K. J., Kagan, E., & Hensley, L. E. (2003). Mechanisms underlying coagulation abnormalities in Ebola hemorrhagic fever: overexpression of tissue factor in primate monocytes/macrophages is a key event. *Journal of Infectious Diseases* 188(11): 1618–1629.
- [29] Garcia-vallejo, J. J., & Van Kooyk, Y. (2015). DC-sign. C-type lectin with prominent role in immune system. In *Glycoscience: Biology and Medicine* (pp. 649–659). Springer, Japan.
- [30] Gillespie, L., Roosendahl, P., Ng, W. C., Brooks, A. G., Reading, P. C., & Londrigan, S. L. (2016). Endocytic function is critical for influenza A virus infection via DC-sign and I-sign. *Scientific Reports*, 6: 19428.
- [31] Wang, H., Shi, Y., Song, J., Qi, J., Lu, G., Yan, J., & Gao, G. f. (2016). Ebola viral glycoprotein bound to its endosomal receptor Niemann-Pick C1. *Cell* 164(1): 258–268.
- [32] Takada, A., Fujioka, K., Tsuiji, M., Morikawa, A., Higashi, N., Ebihara, H.,... & Kawaoka, Y. (2004). Human macrophage c-type lectin specific for galactose and N-acetylgalactosamine promotes filovirus entry. *Journal of Virology* 78(6): 2943–2947.
- [33] Zampieri, C. A., Sullivan, N. J., & Nabel, G. J. (2007). Immunopathology of highly virulent pathogens: insights from Ebola virus. *Nature Immunology* 8(11): 1159–1164.
- [34] Brudner, M., Karpel, M., Lear, C., Chen, L., Yantosca, L. M., Scully, C.,... & Mungall, B. A. (2013). Lectin-dependent enhancement of Ebola virus infection via soluble and transmembrane c-type lectin receptors. *PLoS One* 8(4), e60838.
- [35] Sui, J., & Marasco, W. A. (2002). Evidence against Ebola virus SGP binding to human neutrophils by a specific receptor. *Virology* 303(1): 9–14.
- [36] Kondratowicz, A. S., Lennemann, N. J., Sinn, P. L., Davey, R. A., Hunt, C. L., et al. (2011). T-cell immunoglobulin and mucin domain 1 (TIM-1) is a receptor for Zaire Ebola virus and lake Victoria Marburgvirus. *Proceedings of the National Academy of Sciences U S A*. doi: 10.1073/pnas.1019030108
- [37] Takada, A., Feldmann, H., Ksiazek, T., & Kawaoka, Y. (2003). Antibody-dependent enhancement of Ebola virus infection. *Journal of Virology*, 77(13): 7539–7544.
- [38] Gustin, J. K., Bai, Y., Moses, A. V., & Douglas, J. L. (2015). Ebola virus glycoprotein promotes enhanced viral egress by preventing Ebola gp40 from associating with the host restriction factor BST2/tetherin. *Journal of Infectious Diseases*, JIV125.

- [39] Dube, D., et al. (2010). Cell adhesion-dependent membrane trafficking of a binding partner for the Ebola virus glycoprotein is a determinant of viral entry. *Proceedings of the National Academy of Sciences USA* 107: 16637–16642.
- [40] Moller-tank, S., & Maury, W. (2014). Phosphatidylserine receptors: enhancers of enveloped virus entry and infection. *Virology* 468–470c: 565–580.
- [41] Mollertank, S., & Maury, W. (2015). Ebola virus entry: a curious and complex series of events. *PLOS Pathogens*, 11(4): e1004731.
- [42] Nanbo, A., Imai, M., Watanabe, S., Noda, T., Takahashi, K., Neumann, G.,...& Kawao-ka, Y. (2010). Ebolavirus internalized into host cells via macropinocytosis in a viral glycoprotein-dependent manner. *PLoS Pathogens* 6(9): e1001121.
- [43] White, J. M., & Schornberg, K. L. (2012). A new player in the puzzle of filovirus entry. *Nature Reviews Microbiology* 10(5): 317–322.
- [44] Kondratowicz, A. S., Lennemann, N. J., Sinn, P. I., Davey, R. A., Hunt, C. L., Mollertank, S., Meyerholz, D. K., Rennert, P., Mullins, R. F., Brindley, M., Sandersfeld, L. M., Quinn, K., Weller, M., Mccray, P. B., Chiorini, J., & Maury, W. (May 2011). "T-cell immunoglobulin and mucin domain 1 (TIM-1) is a receptor for Zaire Ebola virus and lake victoria marburgvirus". *Proceedings of the National Academy of Sciences U.S.A.* 108(20): 8426–8431. doi:10.1073/pnas.1019030108. pmc 3100998. pmid 21536871.
- [45] http://viralzone.expasy.org/all_by_species/5016.html, consulted 4th April 2016.
- [46] Mühlberger, E. 2007. Filovirus replication and transcription. *Future Virol.* 2:205–215
- [47] Higgins, C. D., Koellhoffer, J. F., Chandran, K., & Lai, J. R. (2013). C-peptide inhibitors of Ebola virus glycoprotein-mediated cell entry: effects of conjugation to cholesterol and side chain–side chain crosslinking. *Bioorganic & Medicinal Chemistry Letters* 23(19): 5356–5360.
- [48] Bukreyev, A., Volchkov, V. E., Blinov, V. M., & Netesov, S. V. (1993). The GP-protein of Marburg virus contains the region similar to the 'immunosuppressive domain' of oncogenic retrovirus p15 e proteins. *FEBS Lettters* 323: 183–187.
- [49] Empig, C. J., & Goldsmith, M. A. (2002). Association of the caveola vesicular system with cellular entry by Filoviruses. *Journal of Virology* 76: 5266–5270.
- [50] Wolf, K., Beimforde, N., Falzarano, D., Feldmann, H., & Schnittler, H. J. (2011). The Ebola virus soluble glycoprotein (sGP) does not affect lymphocyte apoptosis and adhesion to activated endothelium. *Journal of Infectious Diseases* 204(Suppl 3): S947–S952.
- [51] Ravikiran, T., & Prasad, Y. (2014). Ebola virus disease: epidemic broke out in lateral Africa. *Indo American Journal of Pharmaceutical Research* 4(12): 5909–5918.
- [52] Heinz Feldmann, "Ebola virus cDNA and the NIH guidelines for Ebola virus cDNA and the NIH guidelines for research involving recombinant DNA molecules research

involving recombinant DNA molecules”, National Institutes of Health (NIH) Recombinant DNA Advisory Committee (RAC) 116th Meeting Tuesday, March 3–4, 2009

- [53] Michael Buchmeier, “Ebola cDNA: Biosafety Risks and Biosecurity Concerns”, National Institutes of Health (NIH) Recombinant DNA Advisory Committee (RAC) 116th Meeting Tuesday, March 3–4, 2009

IntechOpen

IntechOpen