

# We are IntechOpen, the world's leading publisher of Open Access books Built by scientists, for scientists

4,800

Open access books available

122,000

International authors and editors

135M

Downloads

Our authors are among the

154

Countries delivered to

TOP 1%

most cited scientists

12.2%

Contributors from top 500 universities



WEB OF SCIENCE™

Selection of our books indexed in the Book Citation Index  
in Web of Science™ Core Collection (BKCI)

Interested in publishing with us?  
Contact [book.department@intechopen.com](mailto:book.department@intechopen.com)

Numbers displayed above are based on latest data collected.  
For more information visit [www.intechopen.com](http://www.intechopen.com)



---

# Ceramic Materials Based on Clay Minerals in Cultural Heritage Study

---

Rodica-Mariana Ion, Radu-Claudiu Fierăscu, Sofia Teodorescu, Irina Fierăscu, Ioana-Raluca Bunghez, Daniela Țurcanu-Caruțiu and Mihaela-Lucia Ion

Additional information is available at the end of the chapter

<http://dx.doi.org/10.5772/61633>

---

## Abstract

The artifacts belonging to the ceramic heritage are mostly based on all clay types used by humans over the ages, because the sources of clays were easily available and people were interested to produce ceramics and pottery. This is the reason why the conservation of cultural heritage is of great concern. Ceramics (Greek κεράμιον Keramion) is a material obtained by shaping and firing clay. In the Romanian history, many ceramic pieces, of great diversity, have been discovered, and most of them are used in traditional households. Ceramic materials based on clay minerals in cultural heritage (ceramic heritage) involve techniques of characterization of raw materials and ceramic objects based on clays, discovered in different archaeological sites, leading to some results about the production technology, provenance, authentication, and historical appartenance on Romanian territory. The chemical composition of ancient ceramics and pigments decorating them, excavated from different Romanian archaeological sites, suggested a chemical composition of ceramic based on clay minerals (kaolinite, illite, and smectite), while the pigments belonging to them contained red pigments (hematite or ocher), manganese oxides (brown pigments), and magnetite or carbon of vegetable origin (black-pigmented layers).

**Keywords:** Cultural heritage, clays, pottery, ceramics, Transylvania tiles

---

## 1. Introduction

In ancient times, sources of clays were widely available, between them soils or surface sediments have been the proper sources for ceramics without further treatment, due to their natural mixture of plastic and nonplastic components [1]. Ceramics is an inorganic nonmetallic

---

material obtained through thermal processing of natural raw materials at relatively high temperature [2]. The raw materials are clays with finely divided quartz (sand) (0.02–0.04 mm) and feldspar, responsible for the rheology along the thermal processing. Clay is a group of minerals in earth that is granular; plastic, when mixed with a little water; or hard and brittle, if combusted. The clay is composed of hydrated aluminum silicates, with the addition of an appreciable amount of other elements: magnesium, iron, calcium, and potassium [3,4]. The clays retain fluid water (liquid) (from pores between clay particle aggregates) at low temperature, molecular water from the surface of particles or crystallites at medium temperature, and, sometimes, neutral molecules ( $H_2O$ ) or ionic hydroxyl groups ( $OH^-$ ) liberated at higher temperatures during thermal processing [5–7]. The production of ceramics was first implemented in the Neolithic period. The Greeks and Romans developed lime mortar cements, with a remarkable resistance, and some of these archaeological sites stand testimony to this day [8]. The Industrial Revolution of the eighteenth and nineteenth centuries registered significant improvements in the ceramic industry, while the twentieth century contributed to the scientific understanding of these materials. Conservation and restoration of cultural heritage has become one of the main concerns worldwide. In this respect, there is particular interest for investigations by nondestructive techniques some unique heritage ceramics for their subsequent preservation and restoration. These nondestructive analytical methods are able to provide information on composition/chemical nature of cultural artifacts, selected parts and materials in order to elucidate their origin, state of degradation (surface and/or internal) objects as a result of exposure over a period to environmental conditions, and the effects/effectiveness of strategies to conservation/restoration during their implementation.

### 1.1. Traditional ceramics

The traditional ceramics involve those materials that are derived from common, naturally occurring raw materials such as clay minerals and quartz sand. The traditional ceramics is manufactured from naturally occurring raw materials: silicates—compounds based on silica ( $SiO_2$ ) and unmodified or chemically modified aluminosilicates (alumina [ $Al_2O_3$ ] plus silica). In addition, the raw materials used in traditional ceramics could be classified into three groups: clay, silica, and feldspar [9].

Clay minerals such as kaolinite ( $Al_2[Si_2O_5][OH]_4$ ) generated either by the weathering of igneous rocks under the influence of water, dissolved carbon dioxide, and organic acids, or from feldspar ( $KAlSi_3O_8$ ) eroded from rocks such as granite and deposited in lake beds, which are aluminosilicates that contain sodium (Na), potassium (K), or calcium (Ca) with a composition from  $NaAlSi_3O_8$  and  $KAlSi_3O_8$  to  $CaAl_2Si_2O_8$ . Feldspar acts as fluxing agents to reduce the melting temperatures of the aluminosilicate phases where they are subsequently transformed into clay [10]. Except feldspar, silica, as the second major ingredient in refractories, is usually added as quartz sand, sandstone, or flint pebbles [11]. The role of silica is either to maintain the shape during firing (as filler) or to improve the final mechanical properties.

The behavior of ceramics depends on its chemical, physical, and mechanical properties [7]. In the ancient ceramics, the main minerals are gehlenite ( $Ca_2Al_2SiO_7$ ), anorthite ( $CaAl_2Si_2O_8$ ), quartz ( $SiO_2$ ), belite ( $\beta-Ca_2SiO_4$ ), and carbonates/calcite ( $CaCO_3$ ) and/or dolomite

( $\text{CaMg}(\text{CO}_3)_2$ ). For ceramics with limestone as raw material, the fired products may also contain akermanite ( $\text{Ca}_2\text{MgSi}_2\text{O}_7$ ), gehlenite ( $\text{Ca}_2(\text{Al,Fe,Mg})(\text{Si,Al})_2\text{O}_7$ ), and Mg-silicates (e.g., diopside and  $\text{CaMgSi}_2\text{O}_6$ ) [12,13].

## 2. Background

### 2.1. Romanian history of ceramics

Ceramics, until the twentieth century, was essentially used for utilitarian purposes for ritual acts. At first, craftsmen did not know the potter's wheel, but they were very skilled at shaping and baking clay. Ceramic art painting in white, black and red, with models of great beauty and originality, was spread over a territory more extensive than present-day Romania and perfected for almost 2000 years [14]. The pottery techniques are extremely important for archaeologists as a source of results about cultural groups and their distribution areas. Through fragments of pottery, one can identify intercultural links or movements of populations in certain geographical areas [15]. For example, Romania's geographical region consists of Wallachia until Jiu Valley in Dobrogea, southwest Moldova and southeast Transylvania, and extending south to the Aegean Sea.

Some of the most relevant ceramic types specific to Romania are:

- **Cucuteni** (village in the county of Iași) **mankind ceramics**, 5000–6000 years ago, between the Carpathians and Dnieper, for nearly a millennium, a remarkable Neolithic culture flourished, known as the most relevant example of the relationship between man and clay. These ceramics are widespread in Moldova, northeast Muntenia, and southeast Transylvania, and Bessarabia site is characterized by a very high-quality ceramic that is technically rich with varied paintings [15, 16]. One of the most well-known Cucuteni ceramics, a representative of Romanian culture, is shown in Figure 1. This civilization is a representative of the Chalcolithic period from southeastern Europe and as a valuable source of data on the transformations of the human social evolution, pointing out the following aspects: social, cultural, and technological development, which played a significant role in generating an early form of ranked societies.
- **Monteoru ceramics**, one of the most well-researched Bronze Age times at the north of the Danube, is formed in parts of hilly north and northeast Muntenia and spread quickly in southern Moldova (including east of Prut) and points toward the Carpathian Mountains.
- **Culture Wietenberg** was developed in central Transylvania together with Coțofeni culture that take potteries decorated with mature style, with some Schneckenberg influences.
- **In Gumelnița culture**, the ceramics is especially black and sometimes brown (brick-red rare). Both are weathered, with various shapes and decorations, and the latter carved in relief and barbotined or graphite painted.
- **Hamangia culture** is the oldest Neolithic culture in Dobrogea with a long flowering period, which lasted until the birth of Pontic Gumelnița period.



Figure 1. Cucuteni ceramics

For ancient ceramics, the methodological exact sciences have their beginning in the sixth decade of twentieth century, when it was widely used in X-ray diffraction (XRD) technique [18], investigation of thermal expansion [19], and optical microscopy ceramic artifact analysis [20]. In the next decade, new analytical methods such as Mössbauer spectroscopy [21], differential thermal analysis [22,23], and electron microscopy [24, 25] were explored. Through improvements in the investigation methods in the last decade of the twentieth century, the characterization of such ceramics reached impressive new levels [26–28]. The eighth decade of the twentieth century coincided with the development of some methods based on SEM that currently dominates the studies about pottery. The use of these methods allowed for a better understanding of structural changes due to the different types of clay burning at different temperatures [14], which allowed the extraction of information, enabling economic and social outline of the communities that produced these artifacts. At present, the world can identify and understand the most stages of the technological process of making ceramics in different chronological periods and in different cultures.

It is important to use modern chemical analysis, both nondestructive (which can be in some cases fully noninvasive) methods and destructive methods of modern microanalysis, for small samples analysis [29–32]. They may be extremely valuable in the provenance investigation of an object, the origin of the materials used for its manufacture, in determining its degradation state and, finally, to choose the most suitable methods of restoration and conservation, the type of materials for conservation, and also in monitoring the progress of conservation processes, or to identify the fake art objects [33]. The main aspects of ceramic characterization are classification, production technology, and provenance through specific techniques for chemical and mineralogical characterization: spectroscopic techniques (FT-IR, Raman, XRD, EDXRF, and ICP-AES) and thermoanalytical techniques [34].

## 2.2. Analytical techniques for investigation

Modern chemical methods and measuring techniques can be used for archaeometric purposes. Some analytical techniques have been investigated with exemplification for different Roman artifacts.

## 2.3. Methods and apparatus

**Thermal analysis** presented in the following chapter helped in the characterization of pottery in order to conclude about the chemical and phase composition, and it was recorded with a Mettler 4000 TA, TG 50 analyzer system at a rate of  $10^{\circ}\text{C min}^{-1}$  in a static air atmosphere; PerkinElmer thermoanalyzer TG S-2; and DTA 1700 at a rate of  $10^{\circ}\text{C min}^{-1}$ . A sample (15 mg) of finely ground stones were subjected to analysis in a Pt plate at a temperature range of 35–1000 °C ( $10^{\circ}\text{C min}^{-1}$ ). This concluded that the archaeological pottery was fired at relatively high temperatures.

**Energy-dispersive X-ray fluorescence (EDXRF)** analyses were performed with an PW4025 apparatus, type Minipal PANalytical, with a Si(PIN)-detector and an Rh tube with an acceleration voltage of 30 kV. Due to varying surface structures and inhomogeneities in the surface composition of the samples, the analyses are usually performed on both sides of the objects and a mean value is calculated, when the analysis must be completely nondestructive. When possible, the sample is powdered, so a representative homogenous sample can be obtained. An XRF is known as the first powerful, commercial, fast, nondestructive, and relatively accurate technique for qualitative as well as semiquantitative chemical analysis.

**Inductively coupled plasma—atomic emission spectrometry (ICP–AES)** was used to quantify minor and trace elements. Detection limit for major elements is under the ppm level and the analytical precision calculated from replicate analysis is  $\pm 1\%$ . For the ICP–AES measurements (usually with Varian equipments), the samples are finely powdered in an agate mortar and then mineralized with a microwave-assisted digestion oven with the use of high-pressure closed Teflon PFA vessels (with a mixture of 5 ml HF 40% and 5 ml HNO<sub>3</sub> 65%) and pressure and temperature control. Multielement matrix-matched standards were used for the quantitative determinations.

**X-ray diffraction (XRD)** patterns were recorded on a DRON UM1 diffractometer, operating at 32 kV and 25 mA, using Co K $\alpha$  radiation ( $1.79021 \text{ \AA}$ ) with an iron filter. The diffractometer is connected to the PC, so the collected data can be analyzed and interpreted using either the dedicated program or other specific data analysis software.

**Fourier transform IR spectroscopy (FT-IR)** standard spectra were collected by using a PerkinElmer Spectrum GX spectrometer, for a range of 400–4000 scans and a spectral resolution of  $4 \text{ cm}^{-1}$ . It was possible to use the drift accessory with the powdered pure substance, thereby allowing for a better and easier analysis.

**The Raman spectroscopy** analysis performed with **Raman spectra** has been recorded with a First Guard Raman apparatus, BaySpec with two wavelengths (1,064 and 785 nm). The Raman system includes a “superhead” optic fiber for noncontact measurements, with a 50 $\times$  long



working distance (LWD)-visible Olympus lens. The spectral data were processed with a software application dedicated to the file generation of Raman spectra. The spectral resolution was  $3\text{ cm}^{-1}$ . All the spectra were recorded in the  $200\text{--}3,400\text{ cm}^{-1}$  domain.

### 3. Case studies

#### 3.1. Ceramics from Schneckenberg culture (sixteenth century), Dealul Melcilor, Braşov, Romania

Sampling, reported in Table 1, was performed at the ruins of the Schneckenberg culture (sixteenth century), Dealul Melcilor, Braşov, Romania. Some examples of the investigated ceramic samples are shown in Figure 2.



Figure 2. Different ceramic samples

It is interesting that this region conserved many cultures (Vatina, Gârla Mare, Luciu de Sus, Wietenberg and Otomani). Eight differently fabricated contemporary pottery samples were selected for characterization, as shown in Table 1.

Clay minerals, as the main material for production of ceramics and pottery, show some characteristic reactions—dehydroxylation, decomposition, transformation—during the firing (heating effects,  $20\text{--}800^\circ\text{C}$ ), and several steps for reconstruction of former production conditions are identified, knowing that the temperature at which ancient ceramics and pottery were fired varies over a wide range ( $600\text{--}800^\circ\text{C}$ ) depending on the type of clay used. Thermogravimetric (TG) analysis and differential thermogravimetric (DTG) analysis are very important characterization methods used for the control of the reaction process and of the properties of the materials obtained [35–38]. The presence of some minerals is related to the ceramics firing process, giving information about the manufacture technology of the pottery. For a firing temperature higher than  $900^\circ\text{C}$  (observed for all the analyzed samples), a certain conclusion had been reached that the glazed ceramics was usually fired at temperatures ranging from

900°C to 950°C, mostly due to the reaction between quartz and carbonates when the temperature reaches 900°C.

No.	Sample	Color/location
1	Ceramic	Black/Dealul Melcilor
2	Ceramic	Grey/Dealul Melcilor
3	Ceramic	Red/Dealul Melcilor
4	Ceramic	White/Dealul Melcilor
5	Ceramic	Green/Dealul Melcilor
6	Ceramic	Brown/Dealul Melcilor
7	Ceramic	Braşov tile
8	Ceramic pot	Braşov medieval customs/Bran-Braşov

**Table 1.** The ceramic samples analyzed

Thermal analysis enables detection of exothermic and endothermic peaks (effects due to gain/loss of enthalpy) occurring in the sample when undergoing controlled heating and compares to an inert reference material [39–46]. The endothermic peak around 100°C is due to moisture water, whereas those appearing at about 200–250°C are attributed to “bound” water, or to “hydrated” interlayer cations (as in swelling clay minerals). The TG/DTG diagrams for different colored ceramics are shown in Figure 3.

Figure 4 shows the TG/DTG diagram for the Transylvania tile ceramics.

Some effects have been observed as follows:

- endothermic effects attributed to gypsum appear in the range 120–160°C [47];
- endothermic peak that could be attributed either to water lost from iron hydroxides, or to recrystallization of amorphous and/or crystallized Fe-oxy hydroxides appears at 300°C, through an exothermic peak in the range 300–350°C.
- some exothermic peaks in the range 550–650°C could be attributed to some organic matter (binder used in the preparation of the ceramic paste, or external coating).

In both cases, an abrupt increase in weight starts immediately at room temperature and lasts up to 200°C. To our knowledge, such thermoanalytical behavior of pottery samples has never been observed previously.

Usually, the ceramic heritage contains mostly the following clay types: kaolinites (kaolinite, dickite, nacrite, and halloysite), illites (illite, hydrous micas, phengite, glauconite, and celadonite), smectites (montmorillonite, beidellite, and saponite), vermiculites, and palygorskite (palygorskite and sepiolite). Some minerals, such as kaolinite, illite, and smectite, show strong endothermic peaks (in the range 550–650°C (higher for chlorite)), and some endothermic peaks are at 840°C (single peak)—for calcite and dublets at 780°C and 860°C—for dolomite. They are



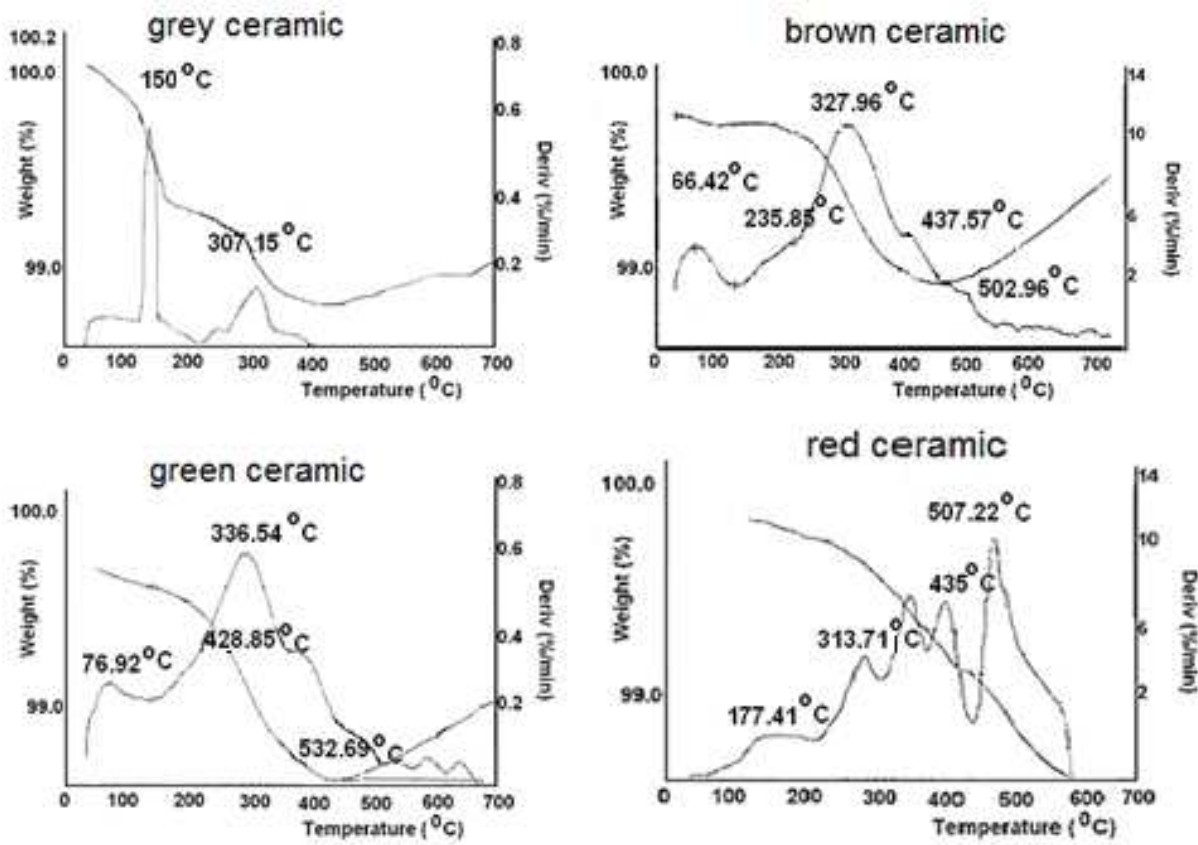


Figure 3. Thermal analyses of colored ceramics

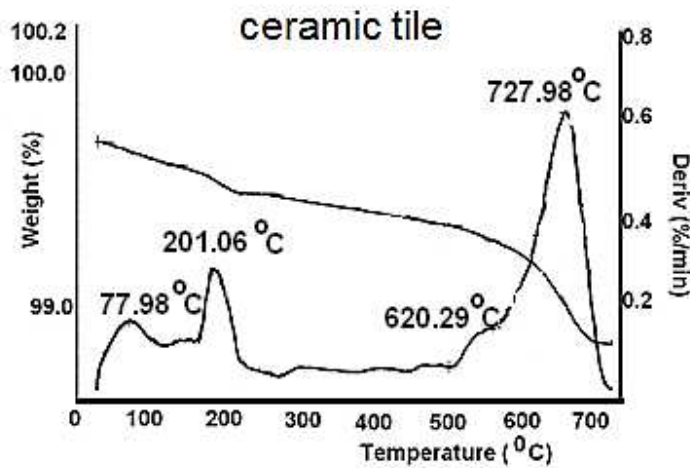


Figure 4. Thermal analyses of tile ceramics

due to the escape of CO during the breakdown of their structure (other carbonates are unusual in ancient ceramic materials). The presence of these characteristic thermal effects indicates that the primary minerals survived the firing processes required to destroy the structure of the minerals. The DTA curves of salts are complex, and their interpretation needs familiar

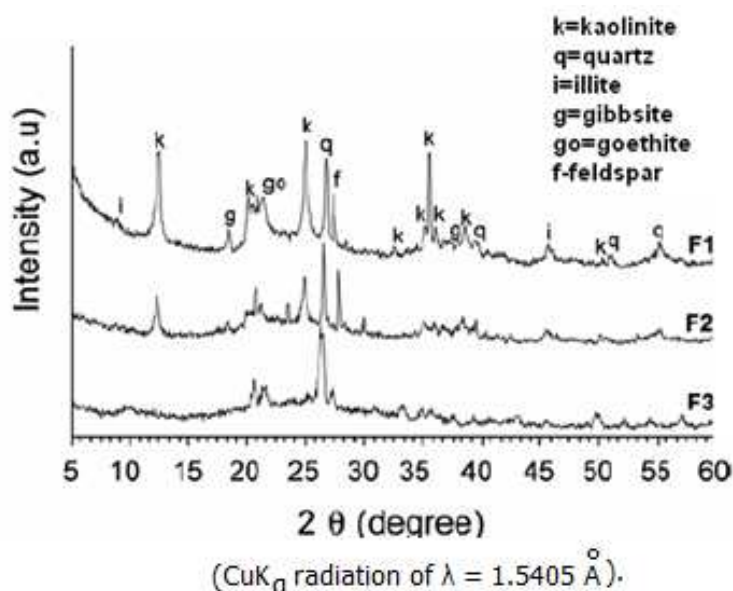
experience with the technique, and also information from other analytic techniques, such as XRD, XRF, ICP-AES, FT-IR [48], micro-chemical tests, and microanalyses (scanning electron microscopy and energy-dispersive X-ray microanalysis (SEM-EDX)).

The X-ray diffraction, as one of the most important techniques for potteries analysis, led to the identification of the following mineral phases: quartz, kaolinite, illite, gibbsite, goethite, feldspar, and mixed layers (smectite/illite). The presence of illite peak in X-ray diffraction patterns indicates the presence of calcite, too. We observe that quartz, kaolinite, and K-feldspar are common elements. These are basic constituents of the original clay matrix.

From profile of the DTG curves, the clays could be classified as Ca-rich and Ca-poor raw clays. **Ca-poor ceramics** include quartz, feldspar, and micas.

For them some processes could be observed:

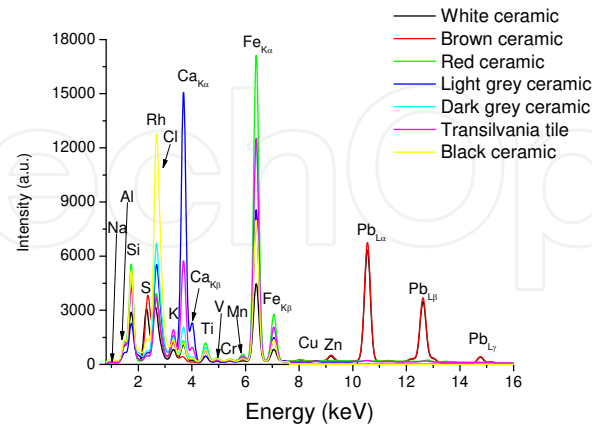
- for calcite presence, which decomposes by oxidation at lower temperature than illite, generated CaO is visible until 800°C.
- hygroscopic water is visible at 80°C, and gypsum at 145°C.
- for almost all clay minerals, their decomposition is visible in the region 580–640°C [33,49–54].



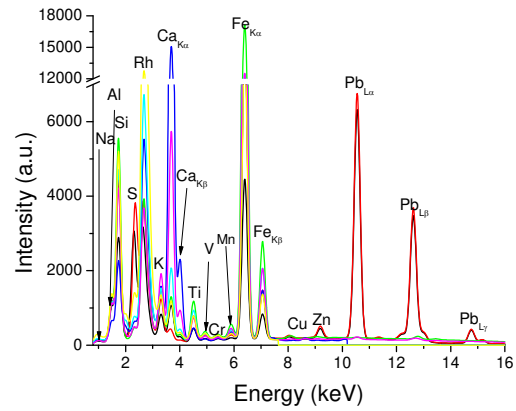
**Figure 5.** XRD diagram for tile (F1) and ceramics (green (F2) and brown (F3))

**The Ca-rich ceramics** (with CaO content >5%) include kaolinite, illite, and chlorite. They show peaks at about 640°C, where clay minerals decompose. The samples present very low firing temperatures (740°C), and CaO has an important role in the transformation process of the ceramic matrix. The red bricks show extensive vitrification with iron oxide phases dispersed almost homogeneously in the vitreous matrix (allocated to large hematite crystals surrounded by lemonite) [55]. In the ceramics with higher percentage of CaO, calcium aluminosilicate microcrystalline is obtained, simultaneously with a color difference, due to the trapping of iron

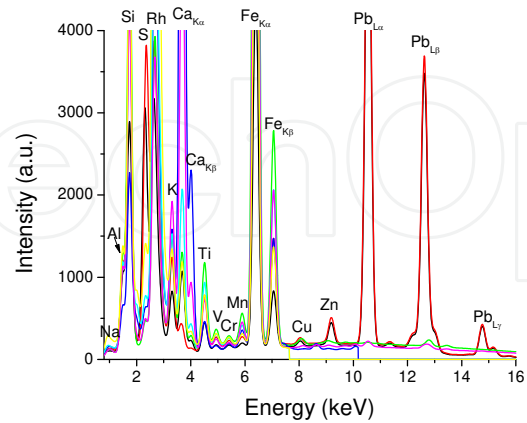
in the augite lattice [56]. A denser, less porous, and more durable ceramics is observed for the red bricks, mostly due to a higher vitrification.



(a)



(b)



(c)

**Figure 6.** (a) XRF spectra of the analyzed samples. (b) XRF spectra of the analyzed samples: a break was inserted in order to observe the variation of the elements; the color codes are the same as for Figure 6 a. (c) XRF spectra of the analyzed samples: the intensity scale was modified in order to observe the variation of the minor elements; the color codes are the same as for Figure 6 a.

Quartz, feldspar, white mica, biotite-like mica, iron oxides, and calcite are the main phases present, but the archaic ceramics contain smaller amounts of detrital feldspar. Also, ilmenite, sphene, zircon, rutile, spinel, epidote, apatite, and monazite have been identified by EDXRF (Figure 6 a,b,c) and SEM in some samples [57]. Cs and Rb concentrations are influenced by the presence of K-feldspar and mica (Cs and Rb are substitute for K). This observation, coupled with their low K<sub>2</sub>O and Na<sub>2</sub>O content and high Al<sub>2</sub>O<sub>3</sub> content, suggests that during the preparation of the raw materials, the potters production followed a procedure, probably “levigation,” separating the less fine nonplastic particles such as K-feldspar and albite. Th and Sc are considered as proper sensors for ancient ceramics provenance due their insolubility and their reduced effects on metamorphism, weathering, and diagenesis [58,59].

Element	Ceramic	Enamel
Si	25.3%	5.56%
Ti	10.1%	15.3%
Al	3,34%	6.42%
Fe	3.05%	4.17%
K	1.21%	0,49%
Na	1.19%	2,97%
Ca	0.28%	0.93%
Ba	0.11%	2.27%
Mg	702 ppm	0.15%
Zr	147 ppm	0.056%
Mn	355 ppm	0.025%
Cr	85.3 ppm	84 ppm
Zn	71.2 ppm	97 ppm
Sr	46.4 ppm	0.026%
Li	24.9 ppm	41%
Ag	1.99 ppm	49 ppm
Pd	—	0.015%
Pb	—	26.2%
Cu	—	0.68%
Tl/Bi	—	26%
P	—	0.22%
Sb	—	0.17%
As	—	5.4 ppm
Au	—	55%

**Table 2.** Major and trace elements ICP-AES analytical results for ancient ceramics and raw material sample (in wt.% and ppm)

The presence of certain chemical elements in the composition of ceramic samples and in the composition of the enamel can provide interesting data on the types of materials used in the

medieval period. Some of these elements are found in the recipes used in painting [60–64]. The fact that the composition was found in zirconia ceramics is proof of the use of bentonite as raw material [15,33].

The degradation of the ceramic parts can be explained by the presence of potassium. Depending on environmental conditions, potassium becomes potassium hydroxide by artifact drying and then potassium carbonate by reacting with  $\text{CO}_2$  from the atmosphere. The presence of KOH makes the area around the vessel to become alkaline, this being responsible for corrosion layer present only in enamel. This is the reason that it should be kept in a controlled humid environment to prevent the subsequent artifacts degradation [30].

Piesa/element	Green paint	Blue paint	White paint	Ceramics
$\text{Na}_2\text{O}$	—	3	4.2	—
$\text{MgO}$	2	—	2.1	2.9
$\text{Al}_2\text{O}_3$	20.2	18.5	24.2	17.6
$\text{SiO}_2$	30.2	36.9	36	52.6
$\text{SO}_3$	12.1	—	—	0.63
Cl	5.46	3.4	5.79	2.1
$\text{K}_2\text{O}$	2.23	3.89	1.67	3.45
$\text{CaO}$	2.16	2.2	3.27	9.66
$\text{TiO}_2$	1.29	1.21	1.63	0.985
$\text{V}_2\text{O}_5$	0.02	0.03	0.03	—
$\text{Cr}_2\text{O}_3$	0.04	0.05	0.041	0.04
$\text{MnO}$	0.043	0.04	0.079	0.22
$\text{Fe}_2\text{O}_3$	1.53	2.17	1.96	9.17
$\text{Co}_3\text{O}_4$	0.070	0.24	0.02	0.069
$\text{NiO}$	0.1	0.36	0.02	—
$\text{CuO}$	0.047	0.064	0.042	0.02
$\text{As}_2\text{O}_3$	0.03	0.35	—	—
$\text{PbO}$	22.3	36.9	18.7	0.17
$\text{ZnO}$	—	—	—	0.03

**Table 3.** Chemical composition of artifacts detected by XRF and XRD

From Tables 2 and 3, similarities for different tempers can be observed, as a proof that most samples fall close, but the ceramic fragment containing sand and feldspar are less similar.

$\text{SiO}_2$  and  $\text{Al}_2\text{O}_3$  together comprise more than 50 wt.% of the ceramic chemical composition. The alkali oxides ( $\text{K}_2\text{O}$ ,  $\text{Na}_2\text{O}$ ,  $\text{CaO}$ , and  $\text{MgO}$ ) constitute together less than 5 wt.% and  $\text{Fe}_2\text{O}_3$



reaches 10 wt.% on average. A high H<sub>2</sub>O value (10 wt.% on average) is observed, which is too high for burned ceramic material. The Al<sub>2</sub>O<sub>3</sub> and H<sub>2</sub>O contents explain the great abundance of clay-derived minerals, and confirm the abundance of partial dehydroxylation of clay material derived from kaolinite (main mineral of the ceramics) [65].

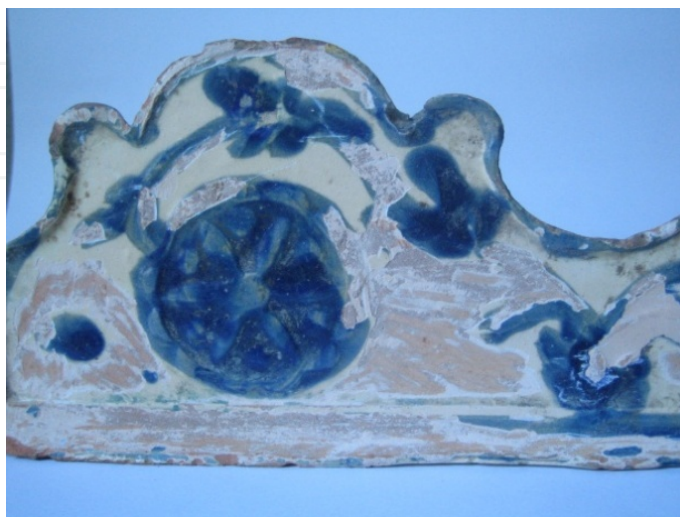
The chemical and mineralogical data, as well as textural aspects, conclude that the main raw material for ceramic elaboration comes from fine-grained clay quartz-rich material. Some important conclusions could be reached:

- When SiO<sub>2</sub> concentration is high, the sample contains quartz sand.
- When the sample contains feldspar, the concentration of K, Na, Ca increases the firing temperature. Kaolinite is the main mineral of the ceramics [66].
- K<sub>2</sub>O, Na<sub>2</sub>O, MgO, and CaO build the feldspar (microcline and albite) and together indicate the presence of illite, hematite, maghemite, goethite, and anatase in the raw material.
- The extremely high SiO<sub>2</sub> contents correspond, besides clay-derived material and the abundance of quartz, to sand grains and rock fragments. The predominance of SiO<sub>2</sub> (61.2%), Al<sub>2</sub>O<sub>3</sub> (34%), Fe<sub>2</sub>O<sub>3</sub> (2%), CaO (<10%), MgO (<3%), and 1.3% loss on ignition confirm clay-derived minerals, quartz, and some iron oxyhydroxides as the main minerals of ceramic fragments. The chemical composition of high-quality refractory clays is as follows: silicon oxide, aluminum oxide, and 2% iron oxide.
- The P<sub>2</sub>O<sub>5</sub> contents relatively high for clay material normally are responsible for amorphous to cryptocrystalline (Al,Fe) phosphate.
- The water contents are still high (5.6–8.9 wt.%) showing the rehydration of the ceramic vessel after their discharge and the formation of the soil with black earth.
- Barium, phosphorus, and even Pb seem to be the anomalous elements found in the ceramic fragments of Scheneckenberg. The anomalous values of Ba were frequently found in the ceramic fragments with temper.
- The iron contents represent hematite and goethite, and some maghemite, minerals also identified in the studied ceramic fragments. Maghemite is responsible for the red color of the potteries. This phase is formed by partial dehydroxylation of clay material (visible at 600 °C). These potteries are used for cooking. They contain elements such as Mg, Ca, Ba, Zn, Pb, Y, from aluminum phosphates and Ba-Mn oxyhydroxides.
- After breaking, these potteries in long contact with soil concentrate in P, Mg, Ca, Mn, Ba, Zn, and Pb. In this phase, hematite and maghemite rehydrate and form kaolinite and goethite, respectively.

### 3.2. Archaeometric investigation of medieval polychrome glazed pottery

The composition and origin of the tile sample taken from the Medieval Customs archaeological site, Bran region, Braşov County, dating back to the seventeenth and the eighteenth centuries, have been used at first for ceramic composition for making ceramics and for the composition

of paints used to decorate this tile. The chemical composition of ancient pigments is an important criterion for the identification of pottery preservation, decoration, and technology used. The study was focused on red, brown, and black pigments from a pre-Roman pottery— a Transylvania tile, Figure 7 [67].



**Figure 7.** Transylvania tile

### 3.2.1. Historical aspects

It seems like ancient tiles appeared in Germany around 1300. The tiles were more advantageous than open fireplace due to storage of warmth and for elimination of smoke in the room. Their use is common in our country and quickly spread throughout Europe, thanks to their advantages. The oldest tile known to us dates from the early fifteenth century. These are unglazed and they represent biblical scenes, mythological strange mermaids with fish or snake tail and wing, real or fantastic animals, pictures knighthood, geometrical, and floral motifs. The tiles could be glazed and polychrome painted with cobalt blue, green, yellow, and brown pigment-based enamel. Besides functionality, tiles were always meticulously decorated in relief. They had to be not only stove plates, but beautiful objects, providing protection and comfort family space. We have too few studies about the representations that appear on Transylvania tiles, how they were chosen, who were favorite reasons, motivations, and their symbolism elections. It is interesting to follow the trail forms and reasons in the European recurrence in different cultures. It seems that often the choice of decoration for tiles was linked to beliefs and rituals apotropaic, popular superstitions. In this respect, chimney, hearth were considered passage-ways, as well as threshold or window. Transitional spaces were exposed to evil spirits, evil eye, magic outside. And inside the house, the stove was considered a dangerous object, which could cause fire and smoke poisoning of the occupants of the house. Hence the need for home care through icons and symbols apotropaic fireplace [68]. An analysis of the compositions of the Roman ceramics reveals that the latter tend to have lower concentrations in Cs, Rb,  $K_2O$ ,  $Na_2O$ , and CaO and higher in  $Al_2O_3$ .

### 3.2.2. *Ceramics support*

Ceramic is a type of kaolin as hydrated aluminum silicate double, feldspar formed by the decomposition of igneous rocks and by the action of carbonic acid and water, under pressure, and subjected to high temperatures. The clays are some of the most common rocks from the earth, with smaller grains of 0.002 mm, composed of a complex mixture of clay minerals: kaolinite, illite, montmorillonite, etc. These are aluminum and magnesium silicate hydrate, made from altered feldspar and other silicates. They add muscovite, feldspar, heavy minerals (zircon, ilmenite, rutile, magnetite, garnets, etc.), fragments of shells, and other sulfide minerals as diagenetic, glauconite, calcite, and very fine particles of minerals from rock unspoiled page of complex colloidal silicate, hydrated, and the remnants of organic substances. The chemical composition of clays varies by minerals they contain. Ceramic clays and semi-acid clays are used in brick masonry construction, terracotta tiles, or cement. Semi-acid clays have a content of approximately 30%  $\text{Al}_2\text{O}_3$  can be used for the extraction of alumina in the synthesis process; and strong base and basic clays (refractory clays) are used in the manufacture of refractory chamotte for the manufacture of fine ceramics. Clays always contain a greater or lesser amount of impurities, which reduce refractoriness [69].

### 3.2.3. *Pigments for glazed tile*

For aesthetic and for a consistent colored ceramic, pigments are used with metallic oxides and different salts. Pigments vary from green to blue-green to blue. They can be used as dyes in clay bodies and glazes, directly or mixed with water. The coating is constituted of lead-alkali glass with the addition of copper or iron ions as coloring agents.

The presence of the oxides is vital. For example, chrome oxide gives green color, but it may fume or volatilize. If tin is present in a white or pastel glaze, the chrome reacts with the tin to create a pink coloration. If zinc oxide is present in the glaze, a dirty-brown color will be obtained. For green color, cobalt-zinc-alumina-chromite blue-green pigment system could be used, where varying the amounts of cobalt and chrome oxides produces a green ceramic color. Many pigments have mineral origin with different colors; for example, ocher: red and yellow; cinnabar: bright red; azurite: blue; malachite: green; lime: white; carbonized bone: black. As organic pigments red madder and murex shell purple are used, and as binding media, egg, casein, and wax.

The chemical compositions of the ancient ceramics and pigments used are shown in Table 4.

Except all these techniques, FT-IR has been used for ceramic composition identification, including the assignment on the basis of the typical wavenumbers of the contributions to the FTIR absorbance spectra of minerals given in the Sadtler database "Minerals and Clays" [70]. Making a distinction of clays present in the samples was also a difficult task: the contribution centered at  $\sim 1033 \text{ cm}^{-1}$  can be attributed both to illite and montmorillonite. Montmorillonite is visible at the peak from  $\sim 615 \text{ cm}^{-1}$ , while the band centered at  $\sim 1,633 \text{ cm}^{-1}$  could be attributed to illite spectrum. Montmorillonite could be derived from hydrolysis process occurring during the burial period of the findings [71]. Calcite, as clearly shown by the FT-IR spectrum in which the large band centered at about  $1444 \text{ cm}^{-1}$  and the contribution at about  $870 \text{ cm}^{-1}$ , typical of

this mineral, is present. The absorptions from the main quartz phase (Si–O) could also be easily identified in the FTIR spectrum of ceramics and pigments used for glaze (Figure 8; 1163, 1083, 798, 778, 695, 514  $\text{cm}^{-1}$ ) [72]. The several intense bands in the range 800–550  $\text{cm}^{-1}$  (725, 646, 584  $\text{cm}^{-1}$ ) are characteristic of the metal–oxygen vibrations in the ceramic samples [73]. However, additionally the characteristic carbonate (calcite phase) vibrations at 1795, 1430, 876, 713  $\text{cm}^{-1}$  [74] and M–O vibrations at 725, 685, 642, 580, 531  $\text{cm}^{-1}$  could also be determined. Characteristic Si–O, C–O, and M–O stretchings could be easily identified in all FT-IR spectra. Broadbands between 3700–3000  $\text{cm}^{-1}$  can be assigned to the adsorbed water (or water of crystallization) and O–H vibrations of glazed pottery. This could be associated with specific surface properties of pottery, which stimulate adsorption of moisture from atmosphere at ambient conditions.

Compound	Green pigment	Blue pigment	White pigment	Ceramic
Na <sub>2</sub> O	–	3	4.2	–
MgO	2	–	2.1	2.9
Al <sub>2</sub> O <sub>3</sub>	20.2	18.5	24.2	17.6
SiO <sub>2</sub>	30.2	36.9	36	52.6
SO <sub>3</sub>	12.1	–	–	0.63
Cl	5.46	3.4	5.79	2.1
K <sub>2</sub> O	2.23	3.89	1.67	3.45
CaO	2.16	2.2	3.27	9.66
TiO <sub>2</sub>	1.29	1.21	1.63	0.985
V <sub>2</sub> O <sub>5</sub>	0.02	0.03	0.03	–
Cr <sub>2</sub> O <sub>3</sub>	0.04	0.05	0.041	0.04
MnO	0.043	0.04	0.079	0.22
Fe <sub>2</sub> O <sub>3</sub>	1.53	2.17	1.96	9.17
Co <sub>3</sub> O <sub>4</sub>	0.070	0.24	0.02	0.069
NiO	0.1	0.36	0.02	–
CuO	0.047	0.064	0.042	0.02
As <sub>2</sub> O <sub>3</sub>	0.03	0.35	–	–
PbO	22.3	36.9	18.7	0.17
ZnO	–	–	–	0.03

**Table 4.** Chemical composition of the Transylvania tile

The Raman spectra collected have to be compared with those obtained previously from reference materials. Published libraries of spectra are now widely available in the literature on historical pigments [75,76], enamel and glazing pigments [77], modern synthetic pigments [78],

modern inks [79], gums, waxes, varnishes, resins and other binders of historical and archaeological importance [80,89], minerals [70,90,91], and plant fibers [92]. As already mentioned, Raman scattering is a very weak phenomenon that requires an intense monochromatic light source to generate a readily detectable effect. Also, the use of lasers has allowed a wider choice of excitation lines, with wavelengths ranging from 351.1 nm to 1064 nm. In Raman spectra, the hematite ( $\alpha\text{-Fe}_2\text{O}_3$ ) bands are identified at 613 (s); 408 (s); 227 (m); 204 (w)  $\text{cm}^{-1}$ , whereas 663  $\text{cm}^{-1}$  band indicates the presence of magnetite ( $\text{Fe}_3\text{O}_4$ ) [94]. The 1329  $\text{cm}^{-1}$  band is also assigned to hematite. When the sample has been produced in an oxidizing atmosphere, the most important indicator is the hematite [90,93]. If magnetite is present, this is an indicator of its incomplete phase transformation into hematite [91].

The Raman spectrum of the tile ceramic is shown in Figure 9. The representative Raman band for beta-quartz is located at 462  $\text{cm}^{-1}$ , while the medium intense 507  $\text{cm}^{-1}$  band is assigned to albite (Na-feldspar). Specific bands appear here: 462, 401, 356  $\text{cm}^{-1}$ , all being attributed to quartz. The band from 506  $\text{cm}^{-1}$  together with the shoulder around 600  $\text{cm}^{-1}$  indicates the presence of hematite. All these are more pronounced for not-glazed face (red colored spectrum). The broadband around 1350–1500  $\text{cm}^{-1}$  is due to amorphous carbon, 461  $\text{cm}^{-1}$  band is assigned to  $\beta$ -quartz. Also, in the Raman spectrum of the ceramic supports, the medium intense –550  $\text{cm}^{-1}$ –band reveals the presence of hematite, as shown in Figure 10.

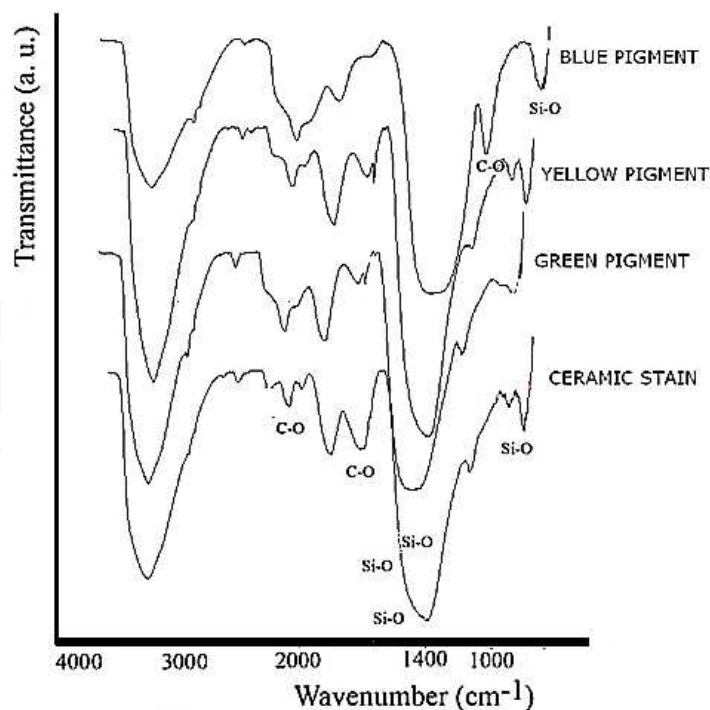


Figure 8. FT-IR spectra of the pigments



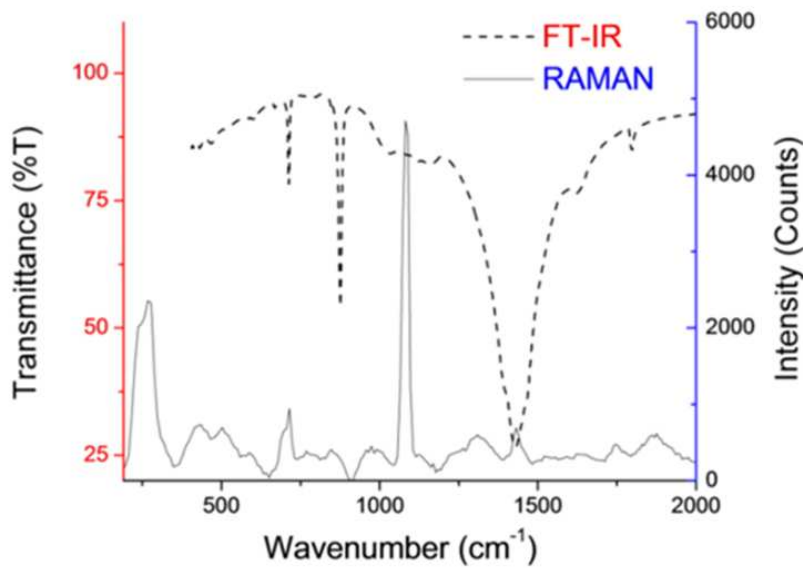


Figure 9. FT-IR and RAMAN spectra of calcite

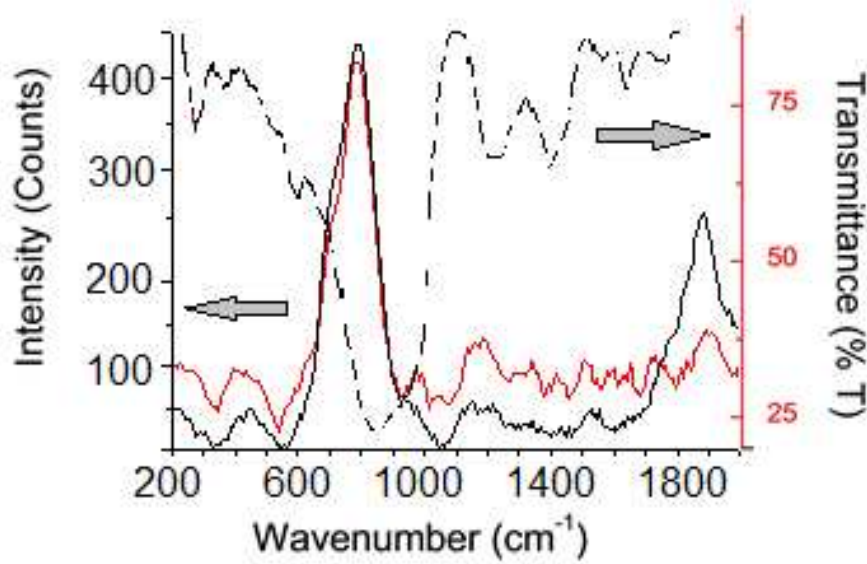


Figure 10. FT-IR and RAMAN spectra of the ceramic tile

#### 4. Conclusions

Many ceramic pieces known as ceramic heritage have been discovered, characterized by specific techniques of characterization either for raw materials or ceramic objects based on clays, discovered in different archaeological sites, leading to some results about the production technology, provenance, authentication, and historical appartenance. The chemical composi-

tion of ancient ceramics and pigments decorating them, excavated from different Romanian archaeological sites, suggested a chemical composition of ceramic based on clay minerals (kaolinite, illite, and smectite), while the pigments belonging to them contain hematite or ocher (a red pigment), manganese oxides (brown pigments), and magnetite or carbon of vegetable origin (black-pigmented layers).

## Acknowledgements

This paper received the financial support of the projects: PN 09.09.03.07, PNII 222/2012 and PNII project 261/2014.

## Author details

Rodica-Mariana Ion<sup>1,2\*</sup>, Radu-Claudiu Fierăscu<sup>1</sup>, Sofia Teodorescu<sup>3</sup>, Irina Fierăscu<sup>1</sup>, Ioana-Raluca Bunghez<sup>1</sup>, Daniela Țurcanu-Caruțiu<sup>4</sup> and Mihaela-Lucia Ion<sup>5</sup>

\*Address all correspondence to: rodica\_ion2000@yahoo.co.uk

1 ICECHIM, Nanomedicine Research Group, Bucharest, Romania

2 Valahia University, Nanomaterials Research Center, Târgoviște, Romania

3 Valahia University, Multidisciplinary Science and Technology Research Institute of Valahia University of Târgoviște - ICSTM, Târgoviște, Romania

4 Ovidius University, Art Faculty, Constanța, Romania

5 Valahia University, History Faculty, Târgoviște, Romania

## References

- [1] Barden L., Sides G.R., (1970). *The engineering behavior of compacted clay*, Journal of the Soil Mechanics and Foundations Division, ASCE 96(SM4): 1171–1200.
- [2] Grim R.E., (1968). *Clay Mineralogy*, 2nd ed., McGraw-Hill Book Company, New York, NY.
- [3] Biot M.A., (1956). *General solutions of the equations of elasticity and consolidation for a porous material*, Journal of Applied Mechanics, Transactions of ASME 78: 91–96.

- [4] Campanella R.G., Mitchell J.K., (1968). *Influence of temperature variations on soil behavior*, Journal of the Soil Mechanics and Foundations Division, ASCE 94(SM3): 709–734.
- [5] Martin R.T., (1960). *Adsorbed water on clay: A review*, Clays and Clay Minerals 9(1): 28–70.
- [6] Martin R.T., (1962). *Adsorbed water on clay*, In: Swineford A. (ed.), Proceedings of the Ninth National Congress on Clays and Clay Minerals, Pergamon Press, New York, NY, pp. 28–70.
- [7] Grim R.E., (1959). *Physico-chemical properties of soils: Clay minerals*, Journal of the Soil Mechanics and Foundations Division, ASCE 85(SM2): (1959) 1–17.
- [8] Maniatis Y., (2009). *The Emergence of Ceramic Technology and Its Evolution as Revealed with the use of Scientific Techniques*, In: Shortland A.J., Freestone I., Rehren T., From Mine to Microscope: Advances in the Study of Ancient Technology, Oxford: Oxbow Books, Chapter 2, pp. 11–28.
- [9] Bergaya F., Lagaly G., (2000). *General introduction: Clays, clay minerals and clay science*, In: Bergaya F., Theng B.K.G., Lagaly G. (eds.), Handbook of Clay Science. Elsevier, Amsterdam, (2000) pp. 1–18.
- [10] Schofield R.K., Samson H.R., (1954). *Flocculation of kaolinite due to the attraction of oppositely charged crystal faces*, Faraday Society, London 18 (1954) 135–145.
- [11] Abercrombie H.J., Hutcheon I.E., Bloch J.D., de Caritat, P., (1994). *Silica activity and the smectite-illite reaction*, Geology 22 (1994) 539–542.
- [12] Guggenheim S., Martin R.T., (1995). *Definition of clay and clay mineral: Joint report of the aipea nomenclature and cms nomenclature committees*, Clays and Clay Minerals, 43(2), 257–259;
- [13] Stolman J.B., Burton J. H., Haas J., (1992). *Chemical and petrographic characterizations of ceramic pastes: Two perspectives on a single data set*, In: NeV H. (ed.), Chemical Characterization of Ceramic Pastes in Archaeology. Madison: Prehistory Press, pp. 85–92
- [14] Maniatis Y., Tite M.S., (1981). *Technological examination of Neolithic - Bronze Age pottery from central and southeast Europe and from the Near East*, Journal of Archaeological Science 8 (1981) 59–76.
- [15] Ion R.M., Ion M.L., Fierăscu R., Dumitriu I., Rugină F., Coșuleț St., Niculescu V.I.R., (2007), *Studii de arheometrie asupra unor artefacte ceramice din patrimoniul muzeal românesc – Analele Universitatii Valahia din Târgoviște – secțiunea Ingineria Materialelor și Mecatronica* 5, 62–68.
- [16] Dumitrescu V., (1985), *Prehistoric Art in Romania*. Meridiane Publishing House. (in Romanian)
- [17] Ellis L., (1980). *Analysis of Cucuteni-Tripolye and Kurgan pottery and the implications for ceramic technology*, Journal for Indo-European studies 8 (1985) 211–230.

- [18] Perinet G., (1960), *Contribution de la diffraction des rayons X a l'évaluation de la température de cuisson d'une céramique*, 7th International Ceramic Congress (1960) 370–376.
- [19] Cole W.F., Crook D.N., (1962). *A study of fired-clay bodies from Roman times*, *Transition of the British Ceramic Society* 61 (1962) 299–315.
- [20] Cowgill U.M., Hutgchinson G.E., (1969). *A chemical and mineralogical examination of the ceramic sequence from Tikal, El Peten, Guatemala*, *American Journal of Science* 267 (1969) 465–477.
- [21] Bouchez R., Coey J.M.D., Coussement R., Schmidt K.P., Rossum M.V., Aprahamian J., Deshayes J., (1974). *Möessbauer study of firing conditions used in the manufacture of the grey and red ware of Tureng-Tepe*, *Journal de Physique* 35 (1974) 540–546.
- [22] Kingery W.D., (1974). *A note on the determination of the differential thermal analysis of archaeological ceramics*, *Archaeometry* 16 (1974) 109–112.
- [23] Slager S., Plas L., Doesburg J.D.J., (1978). *Examination of LBK potsherds from Heienheim*, *Analecta Praehistorica Leidensia XI* (1978) 193–201.
- [24] Tite M.S., Maniatis Y., (1975). *Examination of ancient pottery using the scanning electron microscope*, *Nature* 257 (1975) 122–123.
- [25] Maniatis Y., Tite M.S., (1978/9). *Examination of Roman and Medieval Pottery Using the Scanning Electron Microscope*, *Acta Praehistoria et Archaeologica* 9/10 (1978/9) 125–130.
- [26] González García F., Romero Acosta V., García Ramos G., González Rodríguez M., (1990). *Firing transformations of mixtures of clays containing illite, kaolinite and calcium carbonate used by ornamental tile industries*, *Applied Clay Science* 5 (1990) 361–375.
- [27] Duminuco P., Messiga B., Riccardi M.P., (1998). *Firing process of natural clays. Some microtextures and related phase compositions*, *Thermochimica Acta* 321 (1998) 185–190.
- [28] Spataro M., (2011). *A comparison of chemical and petrographic analyses of Neolithic pottery from South-eastern Europe*, *Journal of Archaeological Science* 38 (2011) 255–269.
- [29] Fierăscu R.C., Dumitriu I., Ion M.L., Catangiu A., Ion R.-M., (2009). *Surface and analytical techniques study of Romanian coins*, *European Journal of Science and Theology*, 5(1) 17–28.
- [30] Dumitriu I., Fierăscu R.C., Catangiu A., Neață M., Ion R.M., Șomoghi R., (2011). *A synthetic approach into the restoration and conservation of metal artifacts (coins)*, *Journal of Optoelectronics and Advanced Materials* 13, 874–878.
- [31] Ion R.M., Radovici C., Fierăscu R.C., Fierăscu I., (2015). *Thermal and mineralogical investigations of iron archaeological materials*, *Journal of Thermal Analysis and Calorimetry*, DOI 10.1007/s10973-015-4659-0.

- [32] Dumitriu I., Fierăscu R.C., Ion R.M., (2011). *Analytical methods in archaeometry: Study of support material*, Scientific Study & Research, Chemistry & Chemical Engineering, Biotechnology, Food Industry 12, 17–24.
- [33] Ion R.M., Ion M.L., Fierăscu R.C., Serban S., Dumitriu I., Radovici C., Bauman I., Coșuleț S., Niculescu V.I.R., (2010). *Thermal analysis of Romania ancient ceramics*, Journal of Thermal Analysis and Calorimetry, 102, 393–398.
- [34] Salazar A., Vergara L., (2011), *ICA mixtures applied to ultrasonic nondestructive classification of archaeological ceramics*, Eurasip Journal on Advances in Signal Processing, Vol. 2010, 11 pages.
- [35] Cardiano P., Sergi S., De Stefano C., Ioppolo S., Piraino P., (2008). *Investigations on ancient mortars from the basilian monastery of Fragal*, Journal of Thermal Analysis and Calorimetry 91, 477–485.
- [36] Krapukaityte A., Tautkus S., Kareiva A., Zalieckiene E., (2008). *Thermal analysis—a powerful tool for the characterization of pottery*, Chemija 19, 4–8.
- [37] Franquelo M.L., Robador M.D., Ramirez-Valle V., Duran A., Jimenez de Haro M.C., Perez-Rodriguez J.L., (2008). *Roman ceramics of hydraulic mortars used to build the Mithraeum house of Merida (Spain)*, Journal of Thermal Analysis and Calorimetry 92, 331–335.
- [38] Ion R.M., Dumitriu I., Fierăscu R.C., Ion M.-L., Pop S.F., Radovici C., Bunghez R.I., Niculescu V.I.R., (2011). *Thermal and mineralogical investigations of historical ceramic: A case study*, Journal of Thermal Analysis and Calorimetry 104, 487–493.
- [39] Papadopoulou D.N., Zachariadis G.A., Anthemedis A.N., Tsirliganis N.C., Stratis J.A., (2004). *Microwave-assisted versus conventional decomposition procedures applied to a ceramic potsherd standard reference material by inductively coupled plasma atomic emission spectrometry*, Analytica Chimica Acta 505, 173–181.
- [40] Hein A., Tsolakidou A., Iliopoulos I., Mommsen H., Buxeda i Garrigos J., Montana G., Kilikoglou V., (2002). *Standardisation of elemental analytical techniques applied to provenance studies of archaeological ceramics: An inter laboratory calibration study*, Analyst 127, 542–553.
- [41] Mirti P., Gulmini M., Perardi A., Davit P., Elia D. (2004). *Technology of production of red figure pottery from Attic and southern Italian workshops*, Analytical and Bioanalytical Chemistry 380, 712–718.
- [42] Ghedini N., Sabbioni C., Pantani M., (2003). *Thermal analysis in cultural heritage safeguard: an application*, Termochimica Acta 406, 105–113.
- [43] Fessas D., Signorelli M., Schiraldi A., Kennedy C.J., Wess T.J., Hassel B., Nielsen K., (2006). *Thermal analysis on parchments I: DSC and TGA combined approach for heat damage assessment*, Termochimica Acta 447, 30–35.



- [44] Branda F., Luciani G., Costantini A., Piccioli C., (2003). *Interpretation of the thermogravimetric curves of ancient Pozzolan concrete*, *Archaeometry* 43, 447–453.
- [45] Drebuschak V.A., Mylnikova L.N., Drebuschak T.N., Bodyrev V.V., (2005). *The investigation of ancient pottery—application of thermal analysis*, *Journal of Thermal Analysis and Calorimetry* 82, 617–626.
- [46] Drebuschak V.A., Mylnikova L.N., Drebuschak T.N., (2011). *The mass-loss diagram for the ancient ceramics*, *Journal of Thermal Analysis and Calorimetry* 104(2), 459–466.
- [47] Shackelford F., Doremus R.H., (2008). *Ceramic and Glass Materials: Structure, Properties and Processing* (2008), p.1.
- [48] Dumitriu I., Fierăscu R.C., Bunghez R.I., Pop S.F., Doncea S.M., Ion M.L., Ion R.M., (2011). *Analytical methods for artefacts complex analysis*, *Revue Roumaine de Chimie* 56, 931–940.
- [49] Shoal S., Beck P., (2005). *Thermo-FTIR spectroscopy analysis as a method of characterizing ancient ceramic technology*, *Journal of Thermal Analysis and Calorimetry* 82, 609–616.
- [50] Sondi I., Slovenec S., (2003). *The mineralogical characteristics of the Lamboglia 2 Roman-Age Amphorae from the Central Adriatic (Croatia)*, *Archaeometry* 45, 251–262.
- [51] Papadopoulou D., Sakalisa A., Merousis C.N., Tsirliganis N.C., (2007). *Study of decorated archaeological ceramics by micro X-ray fluorescence spectroscopy*, *Nuclear Instruments and Methods in Physics Research* 580, 743–746.
- [52] Papadopoulou D.N., Lalia-Kantouri M., Kantiranis N., Stratis J.A., (2006). *Thermal and mineralogical contribution to the ancient ceramics and natural clays characterization*, *Journal of Thermal Analysis and Calorimetry* 84, 39–45.
- [53] Mojumdar S.C., Sain M., Prasad R.C., Sun L., Venart J.E.S., (2007). *Selected thermoanalytical methods and their applications from medicine to construction*, Part I. *Journal of Thermal Analysis and Calorimetry* 90, 653–662.
- [54] Mothe C.G., Ambrosio R.M.C., (2007). *Processes occurring during the sintering of porous ceramic materials by TG/DSC*, *Journal of Thermal Analysis and Calorimetry* 87, 819–822.
- [55] Ion R.M., Dumitriu I., Boroş D., Isac D., Ion M.L., Fierăscu R.C., Catangiu A., (2008). *Characterization of corrosion products on roman mirror*, *Metalurgia International* 8, 43–46.
- [56] Ion R.M., Boroş D., Ion M.L., Dumitriu I., Fierăscu R.C., Radovici C., Florea G., Bercu C. (2008). *Combined spectral analysis (EDXRF, ICP-AES, XRD, FTIR) for characterization of bronze roman mirror*, *Metalurgia International* 5, 61–65
- [57] Rathossi C., Tsoilis-Katagas P.C., Katagas C., (2004). *Technology and composition of Roman pottery in northwestern Peloponnese, Greece*, *Applied Clay Science* 24, 313–326.

- [58] Cullers R.L., Basu A., Suttner L.J., (1988). *Geochemical signature of provenance in sand-size material in soils and stream sediments near the Tobacco Root Batholith, Montana, U.S.A.* *Chemical Geology* 70 (1988) 335–348.
- [59] Nesbitt H.W., Markovics G., Price R.C., (1980). *Chemical processes affecting alkalis and alkaline earths during continental weathering*, *Geochimica et Cosmochimica Acta* 44 (1980) 1659–1666.
- [60] Niculescu G., Coltos C., Popovici D., (1982). *Determinarea pigmentilor utilizati la decorarea ceramicii cucuteniene*, *Cercetari de Restaurare si Conservare* 2, 205–206 (in Romanian).
- [61] Ståhl K., (2000). *The Huber G670 imaging-plate Guinier camera tested on beamline I711 at the MAXII synchrotron*, *Journal of Applied Crystallography* 33, 394–396.
- [62] Stosgale Z., Rook E., (1981). *Analysis of Pigments Used for Decorations of Neolithic Pottery from Bilcze Zlote, Ukraine*, *British Museum–Occasional Paper* 19, 155–161.
- [63] Tang C.C., Maclean E.J., Roberts M.A., Clarke D.T., Praga J.N.W., Pantos E., (2001). *The study of Attic black glosses herds using Synchrotron X-Ray Diffraction*, *Journal of Archaeological Science* 2, 1015–1024.
- [64] Uda M., Sassa S., Yoshimura S., Kondo J., Nakamura M., Ban Y., Adachi H., (2000). *Yellow, red and blue pigments from ancient Egyptian palace painted walls*, *Nuclear Instruments and Methods in Physics Research B* 161–163, 758–761.
- [65] da Costa M.L., Kern D.C., Pinto A.H.E., da Trindade Souza J.R. (2004), *The ceramic artifacts in archaeological black earth (terra preta) from Lower Amazon Region, Brazil: chemistry and geochemical evolution*, *Acta Amazonia* 34(3) 375–386.
- [66] da Costa M.L., Rios G.M., Carvalho da Silva M.M., da Silva G.J., Molano-Valdes U., (2011). *Mineralogy and chemistry of archaeological ceramic fragments from archaeological Dark Earth site in Colombian Amazon*, *Rem: Revista Escola de Minas* 64, 17–23.
- [67] Dumitriu I., Ion R.M., Fierăscu R.C., (2011). *Archeometry of support materials (In Romanian: Arheometria materialelor suport)*, 1st ed. Târgoviște (ed.), Transversal, p. 178.
- [68] González-García F., Romero-Acosta V., García-Ramos G., González-Rodríguez M., (1990). *Firing transformations of mixtures of clays containing illite, kaolinite and calcium carbonate used by ornamental tile industries*, *Applied Clay Science* 5, 361–375.
- [69] Salazar A., (ed.), *Cultural Heritage Applications: Archaeological Ceramics and Building Restoration* (2013). In: *On Statistical Pattern Recognition in Independent Component Analysis Mixture Modelling*, Springer Theses, Vol. 4, Springer-Verlag, Berlin, Heidelberg, pp. 129–153.
- [70] Coleyshaw E.E., Griffith W.P., Bowell R.J., (1994). *Fourier-transform Raman spectroscopy of minerals*, *Spectrochimica Acta A* 50, 1909–1918.

- [71] Murray H.H. (1991). *Overview - clay mineral application*, Applied Clay Science 5, 379–395
- [72] De Benedetto G.E., Laviano R., Sabbatini L., Zambonin P.G., (2002). *Infrared spectroscopy in the mineralogical characterization of ancient pottery*, Journal of Cultural Heritage 3, 177–186,
- [73] Westin G., Nygren M., (1994). *Synthesis and Characterization of  $Ni_2Sb_4(OEt)_{16}$  and its Hydrolysis Products*, Journal of Materials Chemistry 4, 1275–1282.
- [74] Nakamoto K., (1986). *Infrared and Raman spectra of inorganic and coordination compounds*, John Wiley and Sons, New York.
- [75] Bell I.M., Clark R.J.H., Gibbs P.J., (1997). *Raman Spectroscopic Library of Natural and Synthetic Pigments (pre-1850 AD)*, Spectrochimica Acta Part A 53, 2159–2179.
- [76] Burgio L., Clark R.J.H., (2001). *Library of FT-Raman Spectra of Pigments, Minerals, Pigment Media and Varnishes, and Supplement to Existing Library of Raman Spectra of Pigments with Visible Excitation*, Spectrochimica Acta Part A 57, 1491–1521.
- [77] Colomban P., Sagon G., Faurel X. (2001). *Differentiation of antique ceramics from the Raman spectra of their coloured glazes and paintings*. Journal of Raman Spectroscopy 32, 351–360.
- [78] Vandenberghe P., Moens L., Edwards H.G.M., Dams R. (2000), *Raman spectroscopic database of azopigments and application to modern art studies*, Journal of Raman Spectroscopy 31, 509–517.
- [79] Claybourn M., Ansell M., (2000). *Using Raman spectroscopy to solve crime: inks, questioned documents and fraud*, Science and Justice 40, 261–271.
- [80] Edwards H., Chalmers J.M., (2005). *Raman Spectroscopy in Archaeology and Art History*, Cambridge: The Royal Society of Chemistry.
- [81] Edwards H.G.M., Drummond L., Russ J., (1999). *Fourier-Transform Raman spectroscopic study of prehistoric rock paintings from the Big Bend Region, Texas*, Journal of Raman Spectroscopy 30, 421–428.
- [82] Edwards H.G.M., Drummond L., Russ J., (1998). *Fourier-Transform Raman spectroscopic study of pigments in native American Indian rock art: Seminole Canyon*, Spectrochimica Acta A 54, 1849–1856.
- [83] Edwards H.G.M., Falk, M.J.P., (1997). *Fourier-Transform Raman spectroscopic study of unsaturated and saturated waxes*, Spectrochimica Acta A 53, 2685–2694;
- [84] Edwards H.G.M., Falk D.W., Sibley M.G., Alvarez-Benedi J., Rull F., (1998). *FT-Raman spectroscopy of gums of technological significance*, Spectrochimica Acta A 54, 903–920.
- [85] Edwards H.G.M., Farwell D.W., Daffner L., (1996). *Fourier-transform Raman spectroscopic study of natural waxes and resins*. Spectrochimica Acta A 52, 1639–1648.

- [86] Edwards H.G.M., Farwell D.W., Perez F.R., Villar S.J., (1999). *Spanish mediaeval frescoes at Basconcillos del Tozo: A Fourier-Transform Raman spectroscopic study*, Journal of Raman Spectroscopy 30, 307–311.
- [87] Edwards H.G.M., Farwell D.W., Rozenberg S., (1999). *Raman spectroscopic study of red pigment and fresco fragments from King Herod's Palace at Jericho*, Journal of Raman Spectroscopy 30, 361–366;
- [88] Edwards H.G.M., Gwyer E.R., Tait J.K.F., (1997). *Fourier-transform Raman analysis of paint fragments from biodeteriorated Renaissance frescoes*, Journal of Raman Spectroscopy 28, 677–684;
- [89] Edwards H.G.M., Newton E.M., Russ J., (2000). *Raman spectroscopic analysis of pigments and substrata in prehistoric rock art*, Journal of Molecular Structure 550–551, 245–256.
- [90] Griffith W.P., (1987). *Advances in Raman and infrared spectroscopy of minerals*, In: Clark R.J.H., Hester R.E (eds.), Spectroscopy of Inorganic-Based Materials, Wiley, Chichester.
- [91] De Faria D.L.A., Silva V., de Oliveira M.T., (1997). *Raman microspectroscopy of some iron oxides and oxyhydroxides*, Journal of Raman Spectroscopy 28, 873–878.
- [92] Edwards H.G.M., Farwell D.W., Webster D., (1997). *FT Raman microscopy of untreated natural plant fibres*, Spectrochimica Acta A 53, 2383–2392.
- [93] Clark R.J.H., (2002). *Applications of Raman spectroscopy to the identification and conservation of pigments on art objects*, In: Handbook of Vibrational Spectroscopy Volume 4: Applications of Vibrational Spectroscopy in Industry, Materials and the Physical Sciences, John Wiley & Sons Ltd, Chichester.
- [94] Smith G.D., Clark R.J.H., (2001). *Raman microscopy in art history and conservation science*, Reviews in Conservation 2, 96–110.