

# We are IntechOpen, the world's leading publisher of Open Access books Built by scientists, for scientists

**4,800**

Open access books available

**122,000**

International authors and editors

**135M**

Downloads

Our authors are among the

**154**

Countries delivered to

**TOP 1%**

most cited scientists

**12.2%**

Contributors from top 500 universities



**WEB OF SCIENCE™**

Selection of our books indexed in the Book Citation Index  
in Web of Science™ Core Collection (BKCI)

Interested in publishing with us?  
Contact [book.department@intechopen.com](mailto:book.department@intechopen.com)

Numbers displayed above are based on latest data collected.

For more information visit [www.intechopen.com](http://www.intechopen.com)



---

## Neuroinflammation and Alteration of the Blood-Brain Barrier in Alzheimer's Disease

---

Luis Oskar Soto-Rojas, Fidel de la Cruz-López,  
Miguel Angel Ontiveros Torres,  
Amparo Viramontes-Pintos,  
María del Carmen Cárdenas-Aguayo,  
Marco A. Meraz-Ríos, Citlaltepelt Salinas-Lara,  
Benjamín Florán-Garduño and José Luna-Muñoz

Additional information is available at the end of the chapter

<http://dx.doi.org/10.5772/60024>

---

### 1. Introduction

Alzheimer's disease (AD) is a neurodegenerative disease, characterized by progressive memory loss, cognitive deterioration and personality changes. Neuropathologically AD brains are characterized by massive accumulation of neurofibrillary tangles (NFT). NFTs are composed by paired helical filaments (PHF), which main constituent is tau protein. Another hallmark lesions of AD are Neuritic plaques (NPs), constituted by extracellular amyloid peptide aggregates ( $A\beta$ ), that are associated with dystrophic neurites (DNs). Amyloid precursor protein (APP) processing occurs via two pathways. A) The amyloidogenic and B) the non-amyloidogenic pathway. In the amyloidogenic pathway, the APP is proteolyzed by  $\beta$ -secretase. This truncation occurs at the N-terminus of APP. The cleavage produces a soluble N-terminal fragment of APP (sAPP $\beta$ ) and a C-terminal transmembrane fragment ( $\beta$ -CTF).  $\beta$ -CTF is cut into the membrane by  $\gamma$ -secretase and generates the Amyloid beta ( $A\beta$ ) peptide and the APP intracellular domain (AICD). Depending on the site of  $\gamma$ -secretase cleavage, two main species of  $A\beta$  are generated:  $A\beta$  40 and  $A\beta$  42 amino acids.  $A\beta$  42 is more hydrophobic and more prone to aggregate, as compared to the  $A\beta$  40 peptide. In the non-amyloidogenic pathway, APP is cleaved by the  $\alpha$ -secretase. This cleavage occurs in the middle region of APP and produces an N-terminal fragment of soluble APP $\alpha$  (sAPP $\alpha$ ) and a C-terminal transmembrane ( $\alpha$ -CTF) fragment. The sAPP $\alpha$  have neurotrophic and neuroprotective functions.

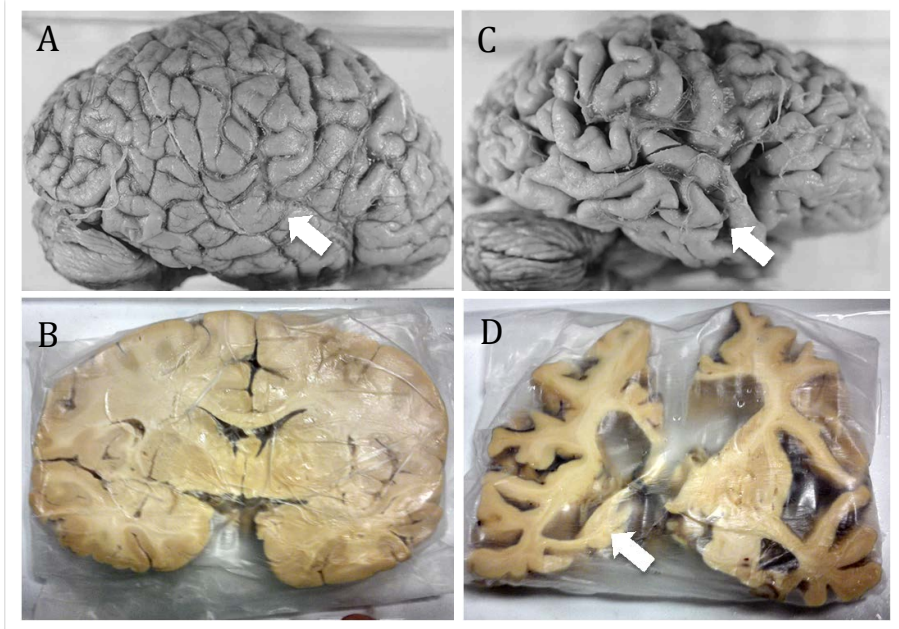
Similarly to  $\beta$ -CTF,  $\alpha$ -CTF after being cleaved by  $\gamma$ -secretase generates a 23-25 amino acid peptide designated as p3.  $A\beta$  aggregates promote an inflammatory response mediated by activated microglia and astrocytes, that may activate pathological signalling pathways, leading to neurodegeneration. Long-term activation of the innate immune system is able to trigger an inflammatory cascade that converges on alterations of the cytoskeleton (including aggregation of tau protein and formation of PHFs and microtubule disassembling) promoting neuronal degeneration. One of the pathological signalling pathways that may lead to neurodegeneration is oxidative stress, defined by the generation of a large amount of reactive oxygen species (ROS), which are highly harmful since they lead to the alteration in the structure of proteins, lipids and nucleic acids and cellular death. High levels of copper and iron have been detected in the blood plasma of people with AD. These metals catalyse the production of ROS by the Fenton reaction resulting in the generation of highly reactive hydroxyl radical, so that the reactivity of these metals can give rise to cellular damage and neurodegeneration. In AD, it had been described oxidative stress caused by free radicals (FRs). The most important in human biology FRs are superoxide ( $O_2^-$ ), hydroxyl ( $OH\cdot$ ), nitric oxide ( $NO\cdot$ ), and trichloromethyl ( $CCl_3\cdot$ ). In AD, there is an increase in iron concentration in the hippocampus. There is an accumulation of iron and aluminum in NPs and cerebrospinal fluid (CSF), which could contribute to this oxidative stress. In AD, neuroinflammation is involved in multiple pathological mechanisms. Clinicopathological and neuroimaging studies have shown that inflammation and microglial activation precede neuronal damage and that oxidative stress occurs prior to neurodegeneration.  $A\beta$  accumulation alters the normal neuronal function, cell death, even before the formation of NPs and NFTs.  $A\beta$  not only has been linked to the inflammatory response, but also in a lesser extent to tau pathology. The  $A\beta$  itself causes activation of microglia and astrocytes through toll-like receptors 2, 4, 9 (TLR); activated microglia produces neurotoxic molecules and is conveniently located to the vicinity of the NPs. The proinflammatory cascade generated by microglial activation, results in the release of cytotoxic molecules such cytokines, chemokines, matrix metalloproteinases, and complement factors. These cytotoxic molecules may enhance neuronal neurodegeneration increasing sensitivity to FRs. The neurotoxicity mediated by microglial cells depends on ROS and cytokines. The present chapter address the physiological and pathological role of proinflammatory cytokines and the induction of tau pathology including tau accumulation and the formation of NFTs, as well as the mechanisms involving extracellular deposits of beta amyloid species ( $A\beta_{1-42}$ ,  $A\beta_{1-40}$ ,  $A\beta_{3-42}$  and  $A\beta_{11-42}$ ), which generate neurotoxic microenvironment in AD. In relation with the mechanisms involved in AD neuroinflammation, we will discuss the participation of caspases in inflammation and its likely activation as a result of the accumulation of endothelial cells. We will also talk about how the accumulation of  $A\beta$  in blood vessels affects blood-brain barrier endothelial cells tight junctions, modifying its permeability and its implications in AD pathology.

## 2. Diagnosis of Alzheimer's disease

AD can be diagnosed with 70% of accuracy, with a battery of clinical analysis and cognition tests. However, the definitive diagnostic test for AD is done post-mortem through histological analysis of the brains of patients.

## 2.1. Gross microscopy pathology

Atrophy of the brain in a case of AD, is generally symmetrical and diffuse in the convolutions, which is evidenced by the decrease in thickness. An increase in the depth of the grooves, a dilatation of the ventricles (Fig 1A and B compared to Fig 1 C and D) and decreased brain weight and volume is noticeable. Atrophy, mainly affecting the hippocampus, and the adjacent area transentorhinal, entorhinal cortex and the temporal and frontal lobes (Fig 1 C,D).



**Figure 1.** Neuroanatomical comparison of normal brain and Alzheimer's disease brain. A,B) Normal Brain. C,D) Brain with pathology of AD. B) Prominent atrophy seen in fronto-temporal areas involved with association functions (arrows). B, D) Coronal sections of A) and C) respectively. Where observe an enlargement of the ventricles and selective hippocampal atrophy (arrow).

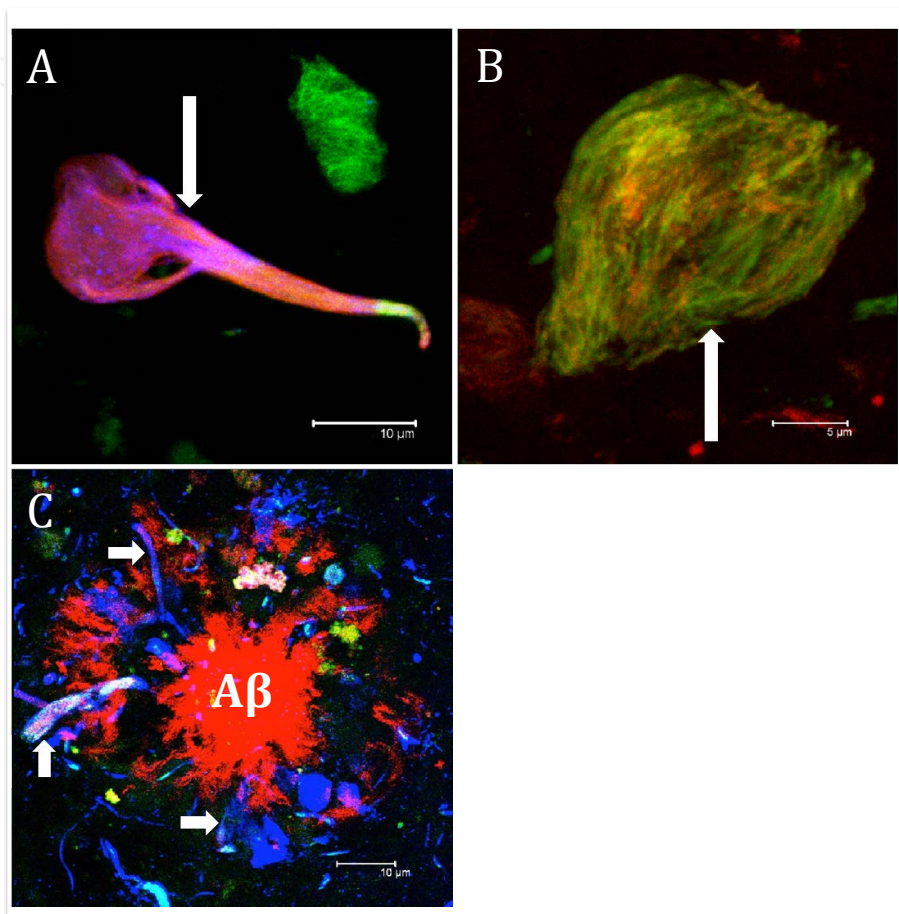
## 2.2. Histopathology of Alzheimer's disease

Microscopically, AD is characterized by the presence of lesions in the brain tissue known as neurofibrillary tangles (NFTs, Fig. 2 A, B. long arrows), dystrophic neurites (DNs, Fig. 1 C short arrows) and neuritic plaques (NPs, Fig. 1. C).

## 2.3. Neurofibrillary tangles

It has been shown that the severity of dementia in AD, correlates significantly with the density of NFTs in the neocortex and entorhinal cortex [1, 2]. At the stage of degeneration NFTs may be intracellular (iNFT, Fig. 2A) or extracellular (eNFT, Fig. 2B), [3] The formation of NFTs is associated with neuronal death [4-6] and found a strong correlation between neuronal degeneration and the transition between iNFT and eNFT [7]. The iNFT are characterized by a compact consistency and to be able to distinguish the cell membrane and the nucleus, although the nucleus may be displaced from its original position by the inclusion of fibrils. NFT is such

a typical flame shape (Fig.2A). The eNFT show a fibrillar relax form and without nucleus (Fig 2B). These eNFT, are considered as the "skeleton" or "ghost" of the affected neuron (Fig 2B), are released into the extracellular space as a consequence of cell death, which remain stable due to its high insolubility and resistance to proteolysis.



**Figure 2.** Hallmark characteristic of Alzheimer's disease brains. A) intracellular neurofibrillary tangle B) extracellular neurofibrillary tangle, are evidenced with antibodies against protein tau. C) Neuritic plaque. Evidenced by thiazine red dye (red channel) marker of beta-pleated sheet conformation and double immunolabelling with two antibodies raised against tau protein to evidence dystrophic neurites (arrows), associated with these beta amyloid deposits ( $A\beta$ ). Confocal microscope images (Leica SP8).

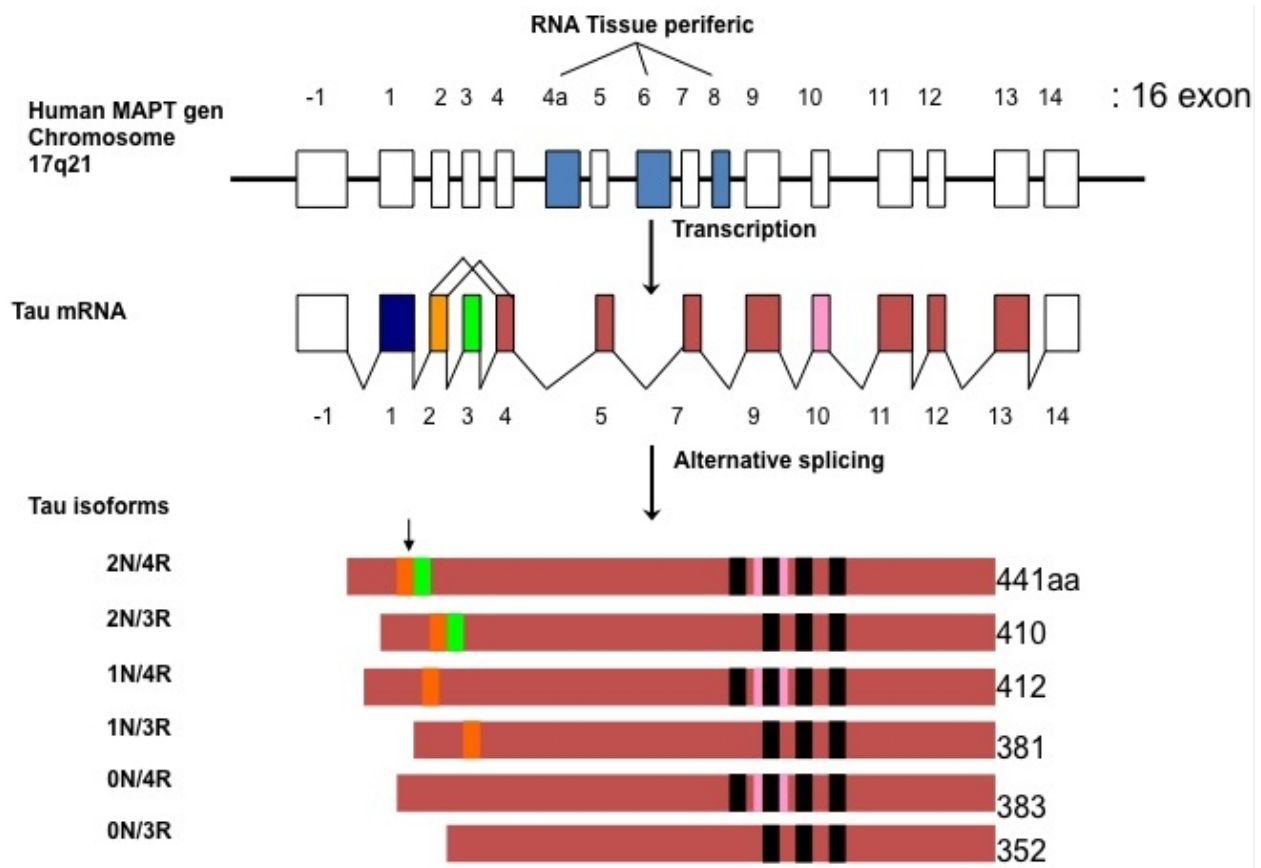
### 3. The tau protein and paired helical filaments

The NTFs and DNs (a component of NPs) are formed by the accumulation of abnormal polymers known as paired helical filaments (PHFs), due to their ultrastructural appearance [8]. The PHFs are characterized by their staining with thiazine red fluorescent dye, which has affinity for  $\beta$ -pleated structures [9], and have been used to differentiate between non-fibrillar (pre-assembled) amorphous and fibrillar states (assembled) of tau protein in AD [3, 10]. The main structural constituent of PHFs is tau protein, which is normally associated with microtubules.



### 3.1. Tau protein structure

Tau is the major component of the family of microtubule-associated proteins in the neuron. The tau gene was located on the long arm of chromosome 17 (17q21) and contains 16 exons [11]. Three of these exons (exon 4, 6 and 8), occurs only in the peripheral tissue RNA and these are not present in human brain mRNA, exons 1 and 14 are transcribed but not translated [12-15]. Exons 2, 3 and 10 have an alternative splicing and exon 3 never appears in the absence of exon 2 [15, 16]. Alternative splicing of three exons latter produces six isoforms of tau protein in the adult brain [12, 17]. Tau isoforms differ from each other by the presence or absence of one or two inserts (29 or 58 amino acids) in the amino terminal portion and by the presence of 3 to 4 repeated domains in the carboxyl terminal portion. The length of the various isoforms of tau varies from 352-441 aa's (Fig 3) [18].



**Figure 3.** Schematic representation of tau protein gene. The MAPT gene encoding the tau protein is located on chromosome 17q21, which contains 16 exons. Isoforms of tau protein in human brain is encoded by 11 exons. Exons 2, 3 and 10 are alternatively spliced, favouring the synthesis of 6 isoforms. With a range of longitude between 352-441 amino acids. They differ by the presence or absence of one or two inserts of 29 amino acids at its amino terminal portion and by the presence of 3 or 4 microtubule binding domains in its C-terminal portion.

### 3.2. Post-translational modifications of tau protein in AD

It has not been reported for AD any change in the levels of RNAs messenger of any of the existing six isoforms of tau protein, which suggested, from the beginning, that abnormal forms of the protein found in PHFs originate from posttranslational modification rather than the novo synthesis [12]. There are two posttranslational modifications of tau protein, as the major molecular mechanisms involved in the pathophysiology of AD: the abnormal hyperphosphorylation and endogenous proteolysis [19, 20]. Both pathological processes are involved in the cascade of molecular events that lead to irreversible polymerization of tau protein into PHFs. Recently it has been described a series of tau conformational changes which appear to be associated, in fact, they appear to be the consequence of both the endogenous hyperphosphorylation and the truncation [21, 22].

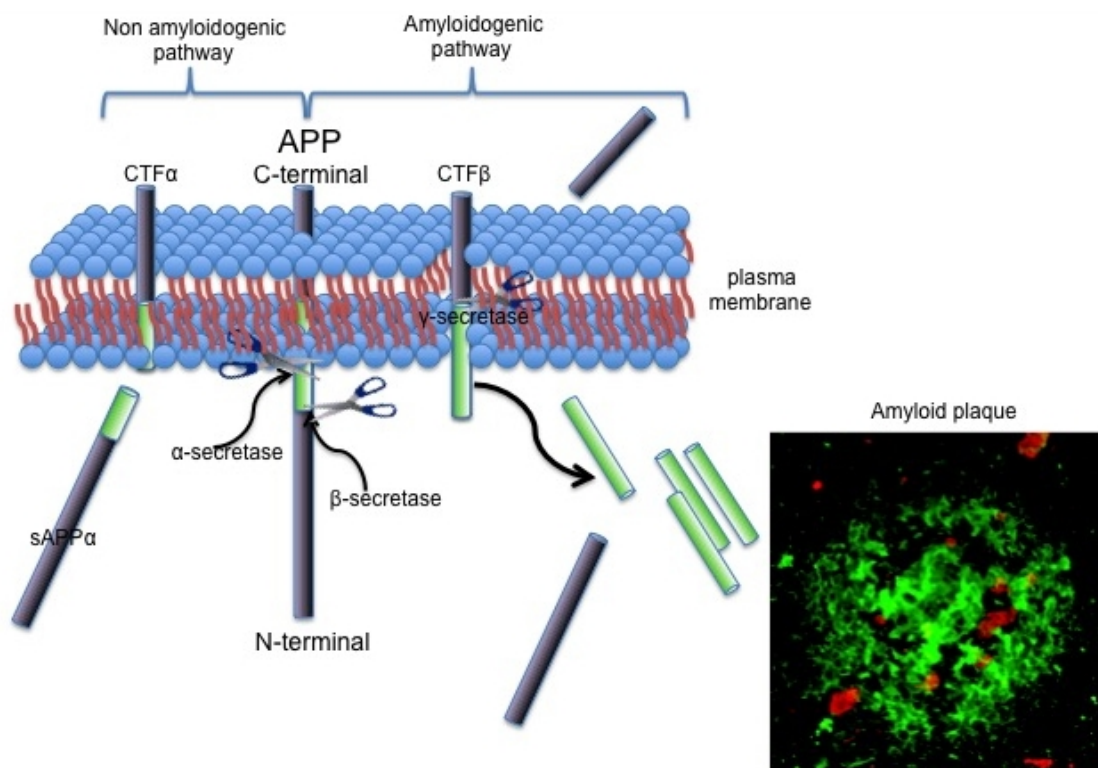
## 4. Neuritic plaques

NPs are composed of extracellular deposits of insoluble amyloid fibrils that are made-up of A $\beta$  peptide (Fig 2C), and these deposits are associated with neuritic component from dendritic and axonal origin (Fig. 2B arrows). There could also be AD brains with soluble non-fibrillar  $\beta$ -amyloid deposits without DNs associated, named senile plaques (SPs). SPs do not have a selective topographic distribution, however, their density is predominant in motor or sensory cortical areas than in primary hippocampal. The density of NPs in AD, in general, does not have a good correlation with the progression of dementia and the degree of neuronal loss [5, 23].

## 5. Amyloid precursor protein and amyloid- $\beta$ peptide

A $\beta$  originates from a large trans-membrane molecule, called APP. So far 8 isoforms of APP are known, were the predominants are the ones of 695, 751 and 770 aa's. The 695 isoform is the most abundant neuronal isoform. APP is a membrane glycoprotein with a single transmembrane domain, an intracytoplasmic portion and a extracellular long portion (Fig. 4). APP has an hydrophobic region of 23 aa's, by which it is anchored to cell membrane. The extracellular domain exposed to partial proteolysis by the action of three secretases ( $\alpha$ ,  $\beta$  and  $\gamma$ ) (Fig 4). The proteolytic processing of APP, can occur via two types: the amyloidogenic and the non-amyloidogenic. By the action of both enzymes:  $\gamma$  (presenilin 1) [24] and  $\beta$  (transmembrane aspartyl protease called BACE) secretases, fragments of A $\beta$  are generated, predominantly the fragments of 40 and 42 aa's. Alternatively to this proteolytic pathway amyloidogenic form, the action of  $\alpha$ -secretase (metallo-protease and call disintegrin TACE) that cleaves the sequence of A $\beta$  at aa's 16 and 17, represents a non-amyloidogenic processing. At first it was thought that the A $\beta$  was produced only in pathological events, however, it was demonstrated that its production and secretion are physiological process, and A $\beta$  is present in plasma and cerebrospinal fluid during the normal life of an individual [9, 25, 26]. In AD, APP metabolism is altered with a progressive increase in the production and abnormal deposition of A $\beta$ . There are some A $\beta$  deposits without neuritic component in elderly individuals without cognitive impairment

[27]. In general, it is thought that the abnormal accumulation of  $A\beta$  may be depend on certain alterations in the normal metabolic APP processes. Recent studies have emphasized a neurotoxic role of  $A\beta$  in *in vivo* animals models, which have led to reconsider the  $A\beta$  peptide, as one of the main factors related to the molecular pathogenesis of AD [28-30].



**Figure 4.** Amyloid precursor protein structure and metabolism. Schematic representation of APP processing by  $\alpha$ -,  $\beta$ -, and  $\gamma$ -secretases. APP processing by secretase activities is divided into the non-amyloidogenic pathway on the left and the amyloidogenic pathway on the right.  $\alpha$ - and  $\beta$ -secretase activities cleave APP in its extracellular domain to release respectively a soluble fragment sAPP $\alpha$  or sAPP $\beta$  in the extracellular space and generate carboxy-terminal fragments CTF $\alpha$  or CTF $\beta$ . These CTFs can subsequently be processed by  $\gamma$ -secretase complex to generate AICD and  $A\beta$ . The  $\gamma$ -secretase complex is composed of presenilin, nicastrin (NCT),  $\gamma$ -secretase activating protein (GSAP), pen-2, and aph-1.

## 6. Oxidative stress and $A\beta$

It is known that  $A\beta$  aggregates promote an inflammatory response, mediated mainly by microglia and astrocytes, which activate pathological signaling pathways, which may lead to neurodegeneration. A long-term activation of the innate immune system, is a mechanism capable of triggering an inflammatory cascade that culminates in cytoskeletal alterations (tau aggregation and formation of PHFs) with neurodegenerative consequences of this hypothesis, it has named "neuroimmunomodulation" [31].

One of these pathological signalling pathways that may lead to neurodegeneration, is oxidative stress, defined as the generation of a large amount of reactive oxygen species (ROS), which are highly harmful, leading to the alteration in the structure of proteins, lipids and nucleic acids



and cell death [32]. AD described in the oxidative stress caused by free radicals (FRs). Major FRs in human biology are superoxide ( $O_2^-$ ), the hydroxyl ( $OH \cdot$ ), nitric oxide ( $NO \cdot$ ), the thiyl ( $RS \cdot$ ) and trichloromethyl ( $CCl_3 \cdot$ ). There seem to be an accumulation of iron and aluminum in NPs and CSF [33], which could contribute to this oxidative stress [34].

Under physiological conditions,  $A\beta$  could regulate the release of NO, neurotransmitters, and hormones, long term potentiation and promotes cell survival. High levels of NO are generated under conditions of inflammation and may contribute to synaptic dysfunction, oxidation of proteins and lipids; culminating in neuronal death [35, 36] (Figure 5).

In AD, it has been shown that the  $A\beta$ -peptide is able to promote the production of NO in microglia and activated astrocytes [37, 38] the release of proinflammatory cytokines such as IL- $1\beta$  and TNF- $\alpha$  which contribute to the formation of NO and peroxynitrite [38, 39] and cause changes in proteins and lipids, mitochondrial damage, apoptosis and promotes the formation of  $A\beta$ , as well as increasing  $\gamma$ -secretase activity [40, 41] (Figure 3, 5). NO synthesis during development of AD could also contribute to the formation of NFTs (Fig 5), favouring the increase of tau phosphorylation [42].

## 7. Neuroinflammation as a trigger of neuronal death

Inflammation is involved in many pathological mechanisms in AD [43]. Clinicopathological and neuroimaging studies show that microglial activation and inflammation precede neuronal damage [44], and oxidative stress occurs before the histopathological lesion of AD appear [45]. But inflammation can be neuroprotective in its early stages [46] and the inability to resolve the activating stimulus can result in a chronic inflammatory response.

Under physiological conditions, glial cells and neurons express cytokines involved in modulating various functions including cellular homeostasis, metabolism, synaptic plasticity, and neural transmission. The  $A\beta$  plays a role in synaptic function and pathology [47], inducing degeneration, promoting the release of excitatory neurotransmitters by increasing intracellular calcium and ROS production (Figure 4) [48].  $A\beta$  accumulation in the brain parenchyma and blood vessels promote microglial migration causing chronic and acute inflammatory response and induces production of FRs, proinflammatory cytokines and prostaglandins (PG), which may eventually promote neuronal death [49].  $A\beta$  accumulation could disrupt the normal operation of the neurons, resulting in a significant cell dysfunction, which leads to apoptosis even before the formation of NPs and NFTs.

## 8. Glial cells key mediators of the inflammatory response in AD

Microglia cells are derived from monocytes during embryogenesis and are responsible for neuronal damage response [49]. Functions related to the immune response participate in a variety of neuroinflammatory processes [50].

The inflammatory response in AD includes morphological changes of microglia cells ranging from a branched cell "inactive" to the amoeboid appearance "active" [51, 52]. Activated microglia expresses several molecules on their surface, such as: Fc receptors required in phagocytosis of opsonized antigens by IgG, scavenger receptors [53], cytokine and chemokine receptors, complement receptors as CD11b, CD11c, CD14, molecules of the major histocompatibility complex (MHC) [54], Toll-like receptors (TLR) family and A $\beta$  receptors as the receptor for advanced glycation endproducts (RAGE). Cell surface microglial receptors are required for interaction with different types of immune cells, molecules involved in inflammatory responses in the brain and A $\beta$  [55-57].

A $\beta$  itself, causes activation of microglia and astrocytes through TLRs 2, 4 and 9 [54], when activated microglial cells produces neurotoxic molecules and strategically are located in the vicinity of the NPs. This proinflammatory cascade generated by microglial activation results in the release of cytotoxic molecules such as interleukins (IL-1  $\alpha$ , IL-1  $\beta$ , IL-6, IL-10, IL-12, IL-16, IL-23), growth factors (transforming growth factor beta. TGF- $\beta$ ), chemokines, metalloproteinases (MMP-2, MMP-3, MMP-9), eicosanoids (PGD 2, leukotriene C4, cathepsins B and L) and complement factors (C1, C3, C4) also causing astrocytes chemotaxis around NPs [52]. Activated microglia also releases excessive amounts of glutamate and thereby inducing neurodegeneration. These molecules can enhance cytotoxic neurodegeneration, increasing sensitivity to FRs [39]. Thus microglia-mediated neurotoxicity depends on ROS and cytokines [58, 59].

## 9. Astrocytic activation and their significance in the AD

Astrocytes represent the most abundant glial cell type in the CNS. They provide physical and metabolic support for neurons, and they are involved in the formation and maintenance of the BBB (Fig 5A), they produce neurotrophic and neuroprotective factors and are involved in repair processes within the CNS [60]. Attenuate the production of FRs and tumor necrosis factor  $\alpha$  (TNF- $\alpha$ ) [61], reduces microglial activation by A $\beta$  [62] and alter their phagocytic activity [63]. They also decrease the cytotoxicity of A $\beta$ , both directly and indirectly through modulation of microglial cells [64].

In early stages of AD, activated astrocytes are located in two areas: in the molecular layer of the cerebral cortex and the amyloid deposits below the pyramidal cell layer. The activated astrocytes can phagocytose and degrade A $\beta$ , suggesting that these cells are very important in the removal of parenchymal A $\beta$  aggregates (Fig 5A and 6A. Arrowheads). As microglia, astrocytes are also activated by TLRs dependent pathways and RAGE receptors, therefore causing local inflammation and eventually favouring neuronal death [49]. Activated astrocytes produce numerous pro-inflammatory molecules as microglia, but unlike microglia, astrocytes produce S100 $\beta$ , which is highly expressed in the proximity of the A $\beta$  deposits. Prolonged activation of astrocytes has a detrimental impact on neuronal survival and S100 $\beta$  could exacerbate this effect [65].

## 10. Monocytic cells derived from bone marrow function as a compensatory mechanism to remove amyloid deposits

There are 2 types of phagocytic cells within the CNS that are capable of initiating the innate immune response: microglia and peripheral macrophages [66]. These macrophages are recruited into the CNS by cytokines and chemokines, which are released during the microglial and astrocyte activation able to cross the blood brain barrier (BBB) [49]. Cells derived from bone marrow, can cross the BBB into the CNS and differentiate into microglia, which are located surrounding the amyloid deposits [67, 68]. This finding is very important, since if the resident activated microglia is incompetent to eliminate amyloid deposits, macrophages from the periphery could remove them by phagocytosis [69].

The presence of microvasculature in the brain promotes the release of chemokines such as IL-8, MCP-1, MIP-1, MIP-1 $\alpha$  and MIP1- $\beta$  and thereby promoting differentiation of monocytes into macrophages and migration through the BBB [70]. Analysis of the cerebrospinal fluid (CSF) of AD patients showed an increase in the levels of chemokines such as MCP-1 and IL-8 [71, 72]. In vitro models have demonstrated the ability of (CD4 and CD8) lymphocytes to cross the BBB [73] by increasing the level of MIP-1 $\alpha$ .

## 11. Effect of neuroinflammatory environment on BBB integrity

In AD brains, it has been observed a number of inflammatory reactions, surrounding brain microvasculature, together with A $\beta$  accumulation, which is associated with a dysfunction of the BBB. Morphologically the BBB consists mainly of vascular endothelial cells, and other cellular components secondarily supporting the BBB that include pericytes found in the abluminal basal lamina, the perivascular astrocyte that form extensions towards capillaries around the basal lamina of the capillary wall and microglia.

The permeability and integrity of the BBB is regulated by the endothelial intercellular tight junctions (TJ), that consists of three integral membrane proteins: claudin, occludin and adhesion junction molecules, as well as some accessory cytoplasmic proteins (ZO1, ZO2, ZO3 and cingulin). Cytoplasmic proteins are linked to actin cytoskeleton primary protein essential for the structural and functional maintenance of the endothelium [74]. While adherent junctions are formed by Vascular endothelium cadherin (VE-cadherin) which is a transmembrane glycoprotein catenin that its main function is to anchor the complex of cadherins and thereby the actin cytoskeleton, but also it is involved in the development of cellular signalling pathways (Figure 5) [75].

During neuroinflammation, leukocytes can infiltrate the brain microenvironment generating high levels of inflammatory mediators such as TNF- $\alpha$  and IFN- $\gamma$  [76]. Increased levels of TNF- $\alpha$  had been reported not only in endothelial and TJ modulating cytoskeletal rearrangement of brain endothelial cells (BEC) [77, 78], but also by causing an increase in the production of caspase-3 leading BEC to apoptosis [79]. However activation of this caspase 3, not always leads

to apoptosis [80] and it has been shown that hypoxia can induce activation of caspases 3 and 9, without inducing neuronal apoptosis [81]. The caspase-3 has been involved in the disassembly of ZO-1 and claudin-5 in TJ regardless of fragmentation during cerebral ischemia (Fig. 5. blood Vessel) [82].

A recent study showed that TNF- $\alpha$  alone or in combination with IFN- $\gamma$  induces hypermeability, causing the leak of paracellular tracers and also induce degradation of ZO-1. Alterations in the function of brain endothelial cells (BEC) could lead to BBB breakdown, due to high concentrations of cytokines that correlates with expression of caspases 3 and 7 through activation of JNK signalling pathway and protein kinase C (PKC) and an increase in the number of apoptotic cells[83]. Treating peripheral microvascular endothelium with high concentrations of TNF- $\alpha$  and IFN- $\gamma$  results in a loss focal intercellular adhesion mediated by VE-cadherin generating endothelial rupture areas [76] whereas low concentrations of cytokines, also led to effector caspase activation, increased paracellular flux, and redistribution of zonula occludens-1 and VE-cadherin but failed to induce apoptosis. It was also suggested that cytokines have a dose dependent effect on the BEC. The BEC exposed to high levels of cytokines may be susceptible to caspase-mediated apoptosis and the BEC exposed to low concentrations of cytokine does not undergo apoptosis but results in alterations of the BBB [83].

## **12. Disruption of the blood-brain barrier as a marker of AD and other dementias**

BBB dysfunction is a marker of neuroinflammatory diseases [84]. The BEC are the first physical barrier and expresses CNS binding complexes including TJ, and Adherent Junctions (AJ) [85]. In active inflammatory lesions, focal BEC show abnormalities in the distribution of occludin and ZO-1, including the absence or diffuse immunoreactivity at junctions and an increased immunoreactivity in the cytoplasm [86].

Occludin is vulnerable to the attack of matrix metalloproteinase (MMPs) [87]. MMPs can degrade the basal lamina proteins like fibronectin, laminin, and heparan sulfate after ischemic injury, which helps to break the BBB [88, 89]. It was demonstrated in a study the accumulation of occludin in neurons, astrocytes and microglia in AD, frontotemporal dementia (FTD) and vascular dementia (VaD) [90], suggesting a new function of occludin and proteins of the TJ in the pathogenesis of these dementias.

In this same study it was found that claudin 5 is degraded by MMP2 and MMP9 after ischemic damage, and therefore claudin and occludin were found surrounding astrocytes, but not in brain endothelium after an alteration in the BBB [91]. It is likely that the increase in occluding levels found in astrocytes and neurons in VaD, AD and FTD [90], may be a response to autophagy of TJ proteins by these cells after the rupture of the BBB caused by chronic hypoxia, aberrant angiogenesis or both [92].

### 13. Blood-brain barrier mechanisms of transport and regulation of brain A $\beta$ levels

According to the neural theory, A $\beta$  is produced locally in the brain, in contrast to the vascular theory which suggests that the origin of A $\beta$  comes from the circulation, and that the circulation of soluble A $\beta$  (s-A $\beta$ ) may contribute to toxicity when it crosses BEC, which compromises the BBB (figure. 3) [93]. It has been proposed that specific receptors of A $\beta$  are present in human brain capillaries and their distribution in the BEC transport could favour the peptide coupling to the BBB [94]. These receptors include RAGE and SR [95]. It is known that both RAGE and SR are receptors with multiple functions including cell endocytosis and transcytosis of macromolecules. RAGE and SR mediate binding of sA $\beta$  1-40 at the apical side of human BBB, and RAGE is also involved in sA $\beta$  1-40 transcytosis [94].

It has been shown that the interaction between A $\beta$ /RAGE in the luminal membrane of the BBB participates in; 1). The diffusing of A $\beta$  from the circulation to the brain through the BBB parenchyma, 2) Endothelial NF-KB mediated activation resulting in the secretion of pro-inflammatory cytokines (TNF- $\alpha$  and IL-6) and adhesion molecules expression (ICAM-1 and VCAM) and 3), generation of endothelin-1 decreases cerebral blood flow (CBF). The peptide A $\beta$  / RAGE interaction contributes directly to neuronal death producing oxidative damage to neurons expressing RAGE and indirectly through activation of microglia [95]. Inhibition of RAGE/A $\beta$  interaction in affected vasculature inhibits the production of cytokines, oxidative stress and A $\beta$  peptide transport across the BBB [96]. Therefore it is suggested that RAGE could be an excellent therapeutic target in AD. It has been shown that RAGE inhibitors block its interaction to A $\beta$  peptide and stabilizes the BBB functions, reducing neuroinflammation and improving the CBF.

### 14. Alterations of the neurovascular unit in AD

As previously described A $\beta$  aggregates activate microglia and astrocytes, promoting the secretion of cytotoxic and pro-inflammatory factors culminating in neuronal and BBB dysfunction. A $\beta$  can accumulate in the cerebral blood vessels, causing a morphofunctional alteration of neurovascular function.

Human brain receives 20% of the total cardiac output, if the cerebral blood flow (CBF) is stopped, so do brain functions in seconds and damage to neurons occurs in minutes [97]. The neuron-vessel relationship is critical for normal brain function. It has been estimated that each neuron in the human brain has its own capillary [98].

The length of brain capillaries is reduced in AD. These reductions can decrease vascular transport of substrates and nutrients through the BBB and reduce disposal of neurotoxins [99]. Vascular cells can directly affect the synaptic and neuronal functions through alterations in blood flow, the permeability of the BBB, nutrient supply, removal of toxic molecules, enzymatic functions, secretion of trophic factors and matrix molecules or through abnormal

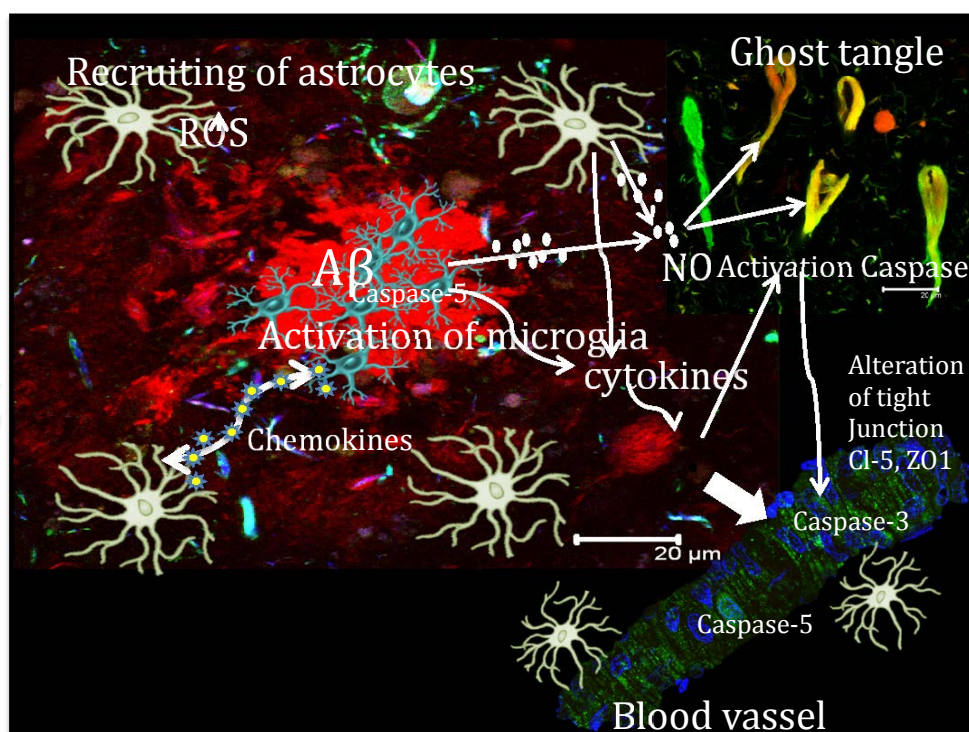


expression of vascular receptors [100]. In response to vascular injury, astrocytes and microglia are recruited, which when activated secrete several pro-inflammatory cytokines [101], that in turn, damage and exacerbates neuronal and synaptic dysfunction.

## 15. Stages of neurovascular dysfunction in AD

In early stages of AD, A $\beta$  peptide removal through the BBB is impair, which could favour the accumulation of neurotoxic A $\beta$  oligomers in the brain. Moreover, A $\beta$  oligomers and focal reduction in capillary blood flow may affect synaptic transmission, causing neuronal damage and initiate the recruitment of microglial cells or blood within the brain [100].

In the early AD symptomatic stage, the BBB start missing A $\beta$  removal properties, and activated endothelium and pro-inflammatory cytokines secreted to the CBF. This increases synaptic dysfunction, accumulation of intracellular tangles and activation of microglia. In late symptomatic AD stages, capillary unit is impair and contribute to the degeneration of the endothelial barrier. At this stage, there is a severe loss of the ability of the BBB to remove A $\beta$ , resulting in amyloid deposits formation in the outer side of the capillary membrane, an increase in the number of NFT and activated microglia and astrocytes. At the final AD stages, the capillary unit is lost due to the amyloid deposits, therefore altering neuronal synapsis (Figure 6) [100].



**Figure 5.** Schematic representation of neuroinflammatory environment and BBB alterations in AD. A $\beta$  aggregates activate microglia and astrocytes, which will secrete pro-inflammatory cytokines and cytotoxic factors that will cause neuronal damage and disruption of the BBB (See more details in text).

## 16. Brain microvascular dysfunction as early event in AD

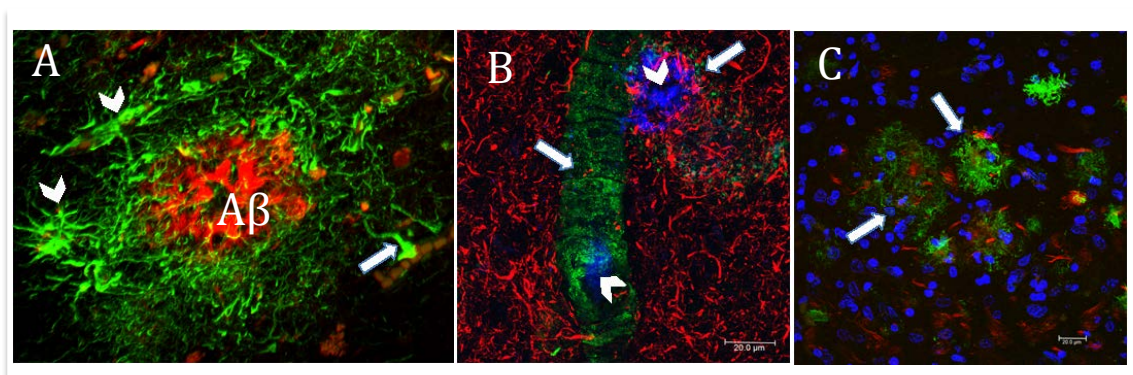
It is proposed that the breakdown of the BBB might be directly responsible for the pathogenesis of sporadic AD or at least could participate synergistically with other pathogenic mechanisms in the development of dementia [102]. Altering the BBB might occur as a result of hypoxia and complication of ischemic events, causing myocardial alterations commonly observed in AD. The breakdown of the BBB in AD is supported by the anatomical thickness and functional changes in the cerebral microvasculature [102]. Deposits of A $\beta$  in the cerebral vasculature, leading to thickening of the basement membrane, stenosis of the vessel lumen and fragmentation of the internal elastic lamina, which can lead to stroke, brain haemorrhage or dementia [103, 104].

In AD there are ultrastructural changes [105] in the capillaries and changes in its distribution and density [106]. It is believed that the accumulation of A $\beta$  is one of the earliest events causing cerebrovascular alterations [107]. It has been detected changes in microvascular permeability and BBB dysfunction in AD brains [108]. BBB regulates the input of plasma derived A $\beta$  and eliminates CNS A $\beta$  through RAGE and the low-density lipoprotein receptor-related protein, (LRP1) respectively [95, 109].

The soluble peptide A $\beta$  (s-A $\beta$ ) is normally produced by different cell types [110] and could be released into the circulation of the cerebrospinal fluid (CSF) [9] and brain parenchyma [111]. The A $\beta$  1-40 peptide represents about 90% of the total cerebrovascular amyloid [112]. High levels of A $\beta$  and the presence of predisposing factors such as apoE4, genetic mutations in PS-1, PS-2 and APP [113], may favor the accumulation of A $\beta$  as fibrillar amyloid in the vessel wall or in the brain parenchyma and could induce cytotoxic effects [95, 114] and contribute to neuronal loss and the development of the AD pathology [113].

Recent studies support the vascular theory to show that the brain distribution of A $\beta$  receptors in the apical side of the BBB might be responsible for the interaction of A $\beta$  circulating with the vascular wall and mediate its transit to the brain [115]. In AD many A $\beta$  deposits are associated with microvessels [116] and with the presence of multiple inflammatory molecules that provide support for monocyte transmigration ability to neighbourhoods of A $\beta$  deposit and in accordance with the clinical-pathological it has been suggested that neuroinflammation plays a role in patients with AD dementia [117]. In a study it was shown that A $\beta$  peptide induced monocyte differentiation into macrophages and hypersecretion of inflammatory cytokines and chemokines [70]. In AD brains, a large number of core amyloid deposits in NPs are intimately associated with endothelial basal lamina and in many instances the lumen is lost [116]. It has also been found that calcium influx is induced by intracellular A $\beta$  [118, 119], and that elevation of intracellular calcium leads to alteration of the TJ as the induction of MMPs [120].

Chronic transmigration of monocytes may result in subtle damage to the BBB. Disruption of the BBB would allow the passage of large amounts of circulating A $\beta$  linked to other carrier proteins such as albumin [121],  $\alpha$ -2 macroglobulin [53] and A $\beta$  components. Albumin levels in CSF of patients with early stages of AD, found to be significantly enhanced due to an increased permeability of the BBB [122]. Elevated levels of other proteins of high molecular weight as haptoglobin, had also been found in this conditions [123].



**Figure 6.** The extracellular deposits of amyloid- $\beta$  peptide induces chronic inflammation in neuronal cell. A) Double immunostaining. Glial cell immunostaining evidenced by GFAP antibody (arrowheads), which is located in the periphery of the extracellular amyloid deposit evidenced by the thiazine red dye ( $A\beta$ ). Microglial cell associated with a blood vessel. B) Triple immunostaining, where expression of caspase-5 (green channel) was detected in the cytoplasm of endothelial cells (the blood vessel, arrow). Adjacent to the blood vessel is possible to observe an extracellular  $A\beta$  deposit (amyloid plaque) evidenced by antibody BAM10 (arrowheads). In the red channel is the immunoreactivity of an antibody against tau protein. C) Double immunostaining with antibodies raised to Caspase-5 (green channel, arrows), which is strongly associated with amyloid plaques (as evidenced by the thiazine red staining, red channel), counterstained with Topro dye to show cell nuclei (blue channel). confocal microscopy, Leica SP8.

## 17. Amyloid beta peptide and intracellular caspase 5 in brain endothelial cells

Caspase-5 is expressed in a restricted manner in placenta, lung, liver, spleen, small intestine, colon and peripheral blood lymphocytes (1, 3) and it is located in the cell cytoplasm. It belongs to the family of proteins involved in apoptosis, inflammation, proliferation and differentiation. Caspase-5 operatively was associated with the caspases 1, 4 and 12.

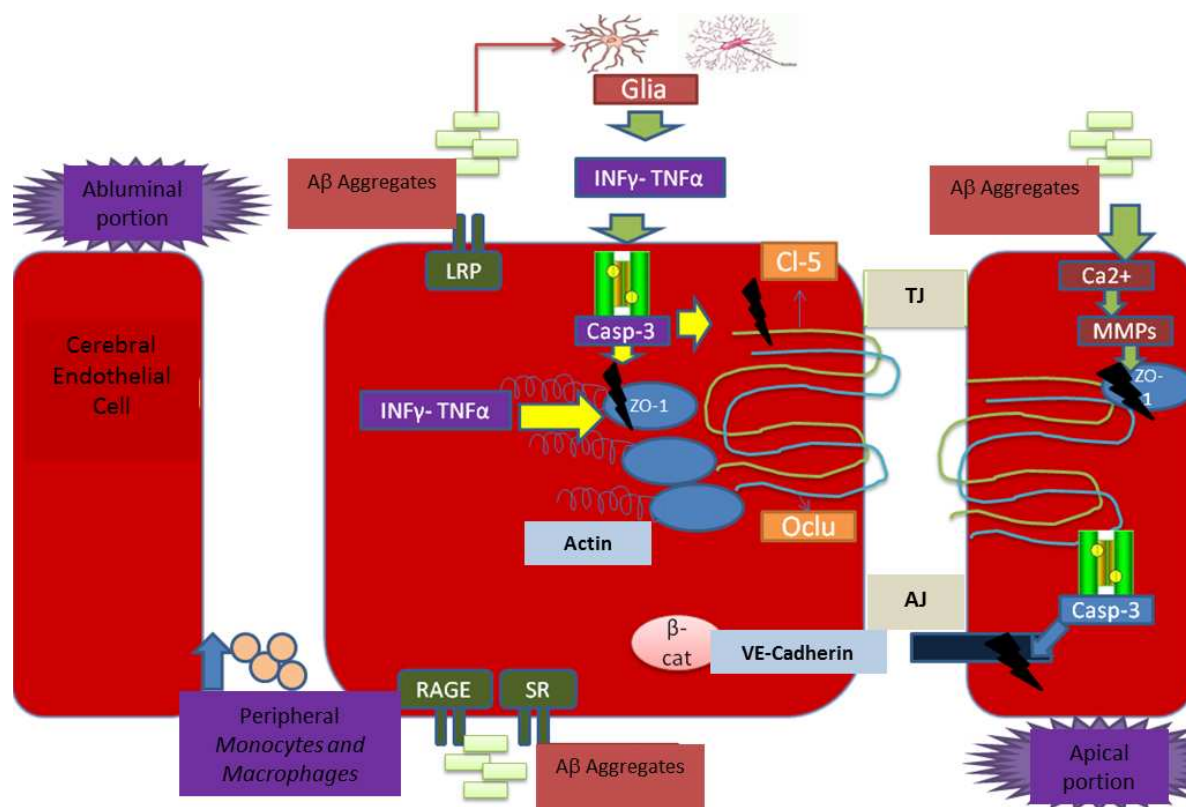
Caspase-5 is regulated by lipopolysaccharide (LPS) and interferon- $\gamma$ . Suggesting that caspase-5 may perform functions in inflammation and innate immune response. Likewise, it is associated with the complex of proteins that constitute the inflammasome. Caspase-5 also participates in IL-1 $\beta$  processing. However the presence of caspase-5 and its role in neurodegenerative diseases is unknown.

In this review we have discussed the inflammatory role that is present in AD brains in response to  $A\beta$  accumulation and stress induced by this peptide, triggering a response in microglial and astroglial cells. Which are responsible for this inflammatory damage in AD. This proinflammatory cascade generated by microglial activation resulting from the release of cytotoxic molecules such as interleukins (IL-1  $\alpha$ , IL-1  $\beta$ , IL-6, IL-10, IL-12, IL-16, IL-23), growth factors (transforming growth factor beta [TGF- $\beta$ ]), chemokines, matrix metalloproteinases (MMP-2, MMP-3, MMP-9), eicosanoids (PGD 2, leukotriene C4, cathepsins B and L) and complement factors (C1, C3, C4) also causing astrocytic chemotaxis around NPs (53). Activated microglia also releases excessive amounts of glutamate excitotoxicity, thereby inducing neurodegeneration. So far caspase-5 has been involved in  $A\beta$  induced neuroinflammation in AD brains. In



our laboratory we have detected the presence of caspase-5 closely associated with A $\beta$  deposits in blood vessels (Fig. 6 B arrows) and A $\beta$  plaques (Fig. 6 B. arrowhead, Fig. 6. C arrows) in AD brains. NPs showed a high immunoreactivity to caspase-5. The presence of caspase-5 was observed in the area where active microglial cells are and poorly observed in the periphery of the NPs where the astroglial cells are (Fig. 6). This does suggest that microglial cells carry out active inflammatory activity and are responsible for the neurotoxic environment observed in AD.

A large number of studies have demonstrated an increase of endothelial cells activity in blood vessels. By double and triple immunostaining and confocal microscopy, we have demonstrated the presence of soluble A $\beta$  and fibrillar A $\beta$  (evidenced by the monoclonal antibody BAM10 and stained with thiazine red (TR), which is used to monitor the fibrillar state of tau and A $\beta$  peptide, with a  $\beta$  pleated sheet conformation.) in endothelial cell soma. It is possible that the accumulation of extracellular A $\beta$  peptide could be triggered by caspase-5 activity, causing an increase in the synthesis of IL, therefore modifying the permeability of cerebral blood vessels by altering tight junctions in AD brains. Consequently the presence and activity of caspase-5 could promote the prolonged and sustained inflammation described in AD brains.



**Figure 7.** Disruption of the BBB in AD. A $\beta$  aggregates activated glia, pro-inflammatory cytokines secretion, which in turn activate caspase 3, contributing to the disassembly of constitutive adherent junction proteins. The A $\beta$  aggregates also contribute to activation of MMPs. BBB damage, allows monocytes, macrophages and peripheral A $\beta$  aggregated to pass from outside the nervous system to the brain, increasing the neuroinflammatory environment.

## 18. Conclusions

Amyloid  $\beta$  peptide, which is aggregated extracellularly in the neuritic plaques, generates a constant inflammatory environment and prolonged, activation of microglial and astroglial cells that potentiate neuronal damage and have been involved in the alteration of the BBB, damaging the permeability of blood vessels. Maybe as a consequence of degradation of tight junctions proteins, favouring the loss of these junctions, altering the permeability of blood vessels. Understanding the mechanisms of action of different species of beta amyloid peptide could lead to new therapeutic interventions directed to inhibit  $A\beta$  aggregation at the level of oligomers, which are much more toxic than the fibrillary form. It is important to understand the mechanisms of action of caspase-5, in this pathological process of amyloid  $\beta$  peptide, emphasizing the clinical importance of caspase-5 and its relation to the process of neuroinflammation.

## Acknowledgements

The authors wish to express their gratitude to the Mexican families who donate the brain of their loved ones affected with AD and made possible our research. We also want to thank Ms. Maricarmen De Lorenz for her outstanding technical and secretarial support and M en C Ivan J. Galván Mendoza, for his support in confocal microscopy. This work was supported by the Grant from CONACYT, No. 142293.

## Author details

Luis Oskar Soto-Rojas<sup>1,2,3</sup>, Fidel de la Cruz-López<sup>2</sup>, Miguel Angel Ontiveros Torres<sup>1</sup>, Amparo Viramontes-Pintos<sup>1</sup>, María del Carmen Cárdenas-Aguayo<sup>4</sup>, Marco A. Meraz-Ríos<sup>4</sup>, Citlaltepelt Salinas-Lara<sup>3,6</sup>, Benjamín Florán-Garduño<sup>5</sup> and José Luna-Muñoz<sup>1\*</sup>

\*Address all correspondence to: jluna@cinvestav.mx

1 Brain Bank-LaNSE CINVESTAV-IPN, Mexico

2 Departments of Physiology. ENCB IPN, México

3 FES Iztacala. UNAM, México

4 Molecular Biomedicine Department, CINVESTAV-IPN, Mexico

5 Physiology, Biophysics and Neurosciences Department, CINVESTAV-IPN, Mexico

6 INNN MVS, Mexico



## References

- [1] Ball, M.J., et al., *Neuropathological definition of Alzheimer disease: multivariate analyses in the morphometric distinction between Alzheimer dementia and normal aging*. *Alzheimer Dis Assoc Disord*, 1988. 2(1): p. 29-37.
- [2] Blessed, G., B.E. Tomlinson, and M. Roth, *The association between quantitative measures of dementia and of senile change in the cerebral grey matter of elderly subjects*. *Br J Psychiatry*, 1968. 114(512): p. 797-811.
- [3] Mena, R., et al., *Monitoring pathological assembly of tau and beta-amyloid proteins in Alzheimer's disease*. *Acta Neuropathol*, 1995. 89(1): p. 50-6.
- [4] Cras, P., et al., *Extracellular neurofibrillary tangles reflect neuronal loss and provide further evidence of extensive protein cross-linking in Alzheimer disease*. *Acta Neuropathol*, 1995. 89(4): p. 291-5.
- [5] Gomez-Isla, T., et al., *Neuronal loss correlates with but exceeds neurofibrillary tangles in Alzheimer's disease*. *Ann Neurol*, 1997. 41(1): p. 17-24.
- [6] Gomez-Isla, T., et al., *Profound loss of layer II entorhinal cortex neurons occurs in very mild Alzheimer's disease*. *J Neurosci*, 1996. 16(14): p. 4491-500.
- [7] Bondareff, W., et al., *Evidence of subtypes of Alzheimer's disease and implications for etiology*. *Arch Gen Psychiatry*, 1993. 50(5): p. 350-6.
- [8] Kidd, M., *Paired helical filaments in electron microscopy of Alzheimer's disease*. *Nature*, 1963. 197: p. 192-3.
- [9] Seubert, P., et al., *Isolation and quantification of soluble Alzheimer's beta-peptide from biological fluids*. *Nature*, 1992. 359(6393): p. 325-7.
- [10] Mena, R., et al., *Staging the pathological assembly of truncated tau protein into paired helical filaments in Alzheimer's disease*. *Acta Neuropathol*, 1996. 91(6): p. 633-41.
- [11] Neve, R.L., et al., *A cDNA for a human microtubule associated protein 2 epitope in the Alzheimer neurofibrillary tangle*. *Brain Res*, 1986. 387(2): p. 193-6.
- [12] Goedert, M., et al., *Multiple isoforms of human microtubule-associated protein tau: sequences and localization in neurofibrillary tangles of Alzheimer's disease*. *Neuron*, 1989. 3(4): p. 519-26.
- [13] Goedert, M., et al., *Cloning and sequencing of the cDNA encoding an isoform of microtubule-associated protein tau containing four tandem repeats: differential expression of tau protein mRNAs in human brain*. *Embo J*, 1989. 8(2): p. 393-9.
- [14] Sawa, A., et al., *Molecular diversity at the carboxyl terminus of human and rat tau*. *Brain Res Mol Brain Res*, 1994. 27(1): p. 111-7.

- [15] Andreadis, A., W.M. Brown, and K.S. Kosik, *Structure and novel exons of the human tau gene*. *Biochemistry*, 1992. 31(43): p. 10626-33.
- [16] Andreadis, A., J.A. Broderick, and K.S. Kosik, *Relative exon affinities and suboptimal splice site signals lead to non-equivalence of two cassette exons*. *Nucleic Acids Res*, 1995. 23(17): p. 3585-93.
- [17] Kosik, K.S., et al., *Developmentally regulated expression of specific tau sequences*. *Neuron*, 1989. 2(4): p. 1389-97.
- [18] Goedert, M., et al., *Tau proteins of Alzheimer paired helical filaments: abnormal phosphorylation of all six brain isoforms*. *Neuron*, 1992. 8(1): p. 159-68.
- [19] Grundke-Iqbal, I., et al., *Abnormal phosphorylation of the microtubule-associated protein tau (tau) in Alzheimer cytoskeletal pathology*. *Proc Natl Acad Sci U S A*, 1986. 83(13): p. 4913-7.
- [20] Novak, M., J. Kabat, and C.M. Wischik, *Molecular characterization of the minimal protease resistant tau unit of the Alzheimer's disease paired helical filament*. *Embo J*, 1993. 12(1): p. 365-70.
- [21] Luna-Munoz, J., et al., *Earliest stages of tau conformational changes are related to the appearance of a sequence of specific phospho-dependent tau epitopes in Alzheimer's disease*. *J Alzheimers Dis*, 2007. 12(4): p. 365-75.
- [22] Luna-Munoz, J., et al., *Regional conformational change involving phosphorylation of tau protein at the Thr231, precedes the structural change detected by Alz-50 antibody in Alzheimer's disease*. *J Alzheimers Dis*, 2005. 8(1): p. 29-41.
- [23] Arriagada, P.V., et al., *Neurofibrillary tangles but not senile plaques parallel duration and severity of Alzheimer's disease*. *Neurology*, 1992. 42(3 Pt 1): p. 631-9.
- [24] Saunders, A.M., *Apolipoprotein E and Alzheimer disease: an update on genetic and functional analyses*. *J Neuropathol Exp Neurol*, 2000. 59(9): p. 751-8.
- [25] Haass, C., et al., *Amyloid beta-peptide is produced by cultured cells during normal metabolism*. *Nature*, 1992. 359(6393): p. 322-5.
- [26] Shoji, M., et al., *Production of the Alzheimer amyloid beta protein by normal proteolytic processing*. *Science*, 1992. 258(5079): p. 126-9.
- [27] Lemere, C.A., et al., *Sequence of deposition of heterogeneous amyloid beta-peptides and APO E in Down syndrome: implications for initial events in amyloid plaque formation*. *Neurobiol Dis*, 1996. 3(1): p. 16-32.
- [28] Mattson, M.P., et al., *beta-Amyloid precursor protein metabolites and loss of neuronal Ca<sup>2+</sup> homeostasis in Alzheimer's disease*. *Trends Neurosci*, 1993. 16(10): p. 409-14.
- [29] Mattson, M.P., et al., *beta-Amyloid peptides destabilize calcium homeostasis and render human cortical neurons vulnerable to excitotoxicity*. *J Neurosci*, 1992. 12(2): p. 376-89.

- [30] Shea, T.B., S. Prabhakar, and F.J. Ekinci, *Beta-amyloid and ionophore A23187 evoke tau hyperphosphorylation by distinct intracellular pathways: differential involvement of the calpain/protein kinase C system*. *J Neurosci Res*, 1997. 49(6): p. 759-68.
- [31] Fernandez, J.A., et al., *The damage signals hypothesis of Alzheimer's disease pathogenesis*. *J Alzheimers Dis*, 2008. 14(3): p. 329-33.
- [32] Lavados, M., et al., *Mild cognitive impairment and Alzheimer patients display different levels of redox-active CSF iron*. *J Alzheimers Dis*, 2008. 13(2): p. 225-32.
- [33] Jellinger, K., et al., *Brain iron and ferritin in Parkinson's and Alzheimer's diseases*. *J Neural Transm Park Dis Dement Sect*, 1990. 2(4): p. 327-40.
- [34] Pappolla, M.A., et al., *Immunohistochemical evidence of oxidative [corrected] stress in Alzheimer's disease*. *Am J Pathol*, 1992. 140(3): p. 621-8.
- [35] Liu, B., et al., *Role of nitric oxide in inflammation-mediated neurodegeneration*. *Ann N Y Acad Sci*, 2002. 962: p. 318-31.
- [36] Calabrese, V., et al., *Nitric oxide in the central nervous system: neuroprotection versus neurotoxicity*. *Nat Rev Neurosci*, 2007. 8(10): p. 766-75.
- [37] Goodwin, J.L., M.E. Kehrl, Jr., and E. Uemura, *Integrin Mac-1 and beta-amyloid in microglial release of nitric oxide*. *Brain Res*, 1997. 768(1-2): p. 279-86.
- [38] Rossi, F. and E. Bianchini, *Synergistic induction of nitric oxide by beta-amyloid and cytokines in astrocytes*. *Biochem Biophys Res Commun*, 1996. 225(2): p. 474-8.
- [39] Combs, C.K., et al., *beta-Amyloid stimulation of microglia and monocytes results in TNF $\alpha$ -dependent expression of inducible nitric oxide synthase and neuronal apoptosis*. *J Neurosci*, 2001. 21(4): p. 1179-88.
- [40] Keil, U., et al., *Amyloid beta-induced changes in nitric oxide production and mitochondrial activity lead to apoptosis*. *J Biol Chem*, 2004. 279(48): p. 50310-20.
- [41] Guix, F.X., et al., *Modification of gamma-secretase by nitrosative stress links neuronal ageing to sporadic Alzheimer's disease*. *EMBO Mol Med*, 2012. 4(7): p. 660-73.
- [42] Saez, T.E., et al., *Astrocytic nitric oxide triggers tau hyperphosphorylation in hippocampal neurons*. *In Vivo*, 2004. 18(3): p. 275-80.
- [43] McGeer, P.L. and E.G. McGeer, *Inflammation, autotoxicity and Alzheimer disease*. *Neurobiol Aging*, 2001. 22(6): p. 799-809.
- [44] Eikelenboom, P. and W.A. van Gool, *Neuroinflammatory perspectives on the two faces of Alzheimer's disease*. *J Neural Transm*, 2004. 111(3): p. 281-94.
- [45] Zhu, X., et al., *Alzheimer's disease: the two-hit hypothesis*. *Lancet Neurol*, 2004. 3(4): p. 219-26.

- [46] Wyss-Coray, T., et al., *Prominent neurodegeneration and increased plaque formation in complement-inhibited Alzheimer's mice*. Proc Natl Acad Sci U S A, 2002. 99(16): p. 10837-42.
- [47] Kamenetz, F., et al., *APP processing and synaptic function*. Neuron, 2003. 37(6): p. 925-37.
- [48] Gylys, K.H., et al., *Synaptic changes in Alzheimer's disease: increased amyloid-beta and gliosis in surviving terminals is accompanied by decreased PSD-95 fluorescence*. Am J Pathol, 2004. 165(5): p. 1809-17.
- [49] Meraz-Rios, M.A., et al., *Inflammatory process in Alzheimer's Disease*. Front Integr Neurosci, 2013. 7: p. 59.
- [50] Lund, S., et al., *The dynamics of the LPS triggered inflammatory response of murine microglia under different culture and in vivo conditions*. J Neuroimmunol, 2006. 180(1-2): p. 71-87.
- [51] Suh, Y.H. and F. Checler, *Amyloid precursor protein, presenilins, and alpha-synuclein: molecular pathogenesis and pharmacological applications in Alzheimer's disease*. Pharmacol Rev, 2002. 54(3): p. 469-525.
- [52] Glass, C.K., et al., *Mechanisms underlying inflammation in neurodegeneration*. Cell, 2010. 140(6): p. 918-34.
- [53] Hughes, S.R., et al., *Alpha2-macroglobulin associates with beta-amyloid peptide and prevents fibril formation*. Proc Natl Acad Sci U S A, 1998. 95(6): p. 3275-80.
- [54] Suzumura, A., *[Neurotoxicity by microglia: the mechanisms and potential therapeutic strategy]*. Fukuoka Igaku Zasshi, 2009. 100(7): p. 243-7.
- [55] El Khoury, J., et al., *Scavenger receptor-mediated adhesion of microglia to beta-amyloid fibrils*. Nature, 1996. 382(6593): p. 716-9.
- [56] Lue, L.F., et al., *Involvement of microglial receptor for advanced glycation endproducts (RAGE) in Alzheimer's disease: identification of a cellular activation mechanism*. Exp Neurol, 2001. 171(1): p. 29-45.
- [57] McGeer, P.L., et al., *Microglia in degenerative neurological disease*. Glia, 1993. 7(1): p. 84-92.
- [58] Benzing, W.C., et al., *Evidence for glial-mediated inflammation in aged APP(SW) transgenic mice*. Neurobiol Aging, 1999. 20(6): p. 581-9.
- [59] Mehlhorn, G., M. Hollborn, and R. Schliebs, *Induction of cytokines in glial cells surrounding cortical beta-amyloid plaques in transgenic Tg2576 mice with Alzheimer pathology*. Int J Dev Neurosci, 2000. 18(4-5): p. 423-31.

- [60] Minagar, A., et al., *The role of macrophage/microglia and astrocytes in the pathogenesis of three neurologic disorders: HIV-associated dementia, Alzheimer disease, and multiple sclerosis.* J Neurol Sci, 2002. 202(1-2): p. 13-23.
- [61] Smits, H.A., et al., *Activation of human macrophages by amyloid-beta is attenuated by astrocytes.* J Immunol, 2001. 166(11): p. 6869-76.
- [62] von Bernhardi, R. and G. Ramirez, *Microglia-astrocyte interaction in Alzheimer's disease: friends or foes for the nervous system?* Biol Res, 2001. 34(2): p. 123-8.
- [63] DeWitt, D.A., et al., *Astrocytes regulate microglial phagocytosis of senile plaque cores of Alzheimer's disease.* Exp Neurol, 1998. 149(2): p. 329-40.
- [64] Ramirez, G., et al., *Protection of rat primary hippocampal cultures from A beta cytotoxicity by pro-inflammatory molecules is mediated by astrocytes.* Neurobiol Dis, 2005. 19(1-2): p. 243-54.
- [65] Mori, T., et al., *Overexpression of human S100B exacerbates cerebral amyloidosis and gliosis in the Tg2576 mouse model of Alzheimer's disease.* Glia, 2010. 58(3): p. 300-14.
- [66] Rezai-Zadeh, K., D. Gate, and T. Town, *CNS infiltration of peripheral immune cells: D-Day for neurodegenerative disease?* J Neuroimmune Pharmacol, 2009. 4(4): p. 462-75.
- [67] Malm, T.M., et al., *Bone-marrow-derived cells contribute to the recruitment of microglial cells in response to beta-amyloid deposition in APP/PS1 double transgenic Alzheimer mice.* Neurobiol Dis, 2005. 18(1): p. 134-42.
- [68] Simard, A.R., et al., *Bone marrow-derived microglia play a critical role in restricting senile plaque formation in Alzheimer's disease.* Neuron, 2006. 49(4): p. 489-502.
- [69] Gate, D., et al., *Macrophages in Alzheimer's disease: the blood-borne identity.* J Neural Transm, 2010. 117(8): p. 961-70.
- [70] Fiala, M., et al., *Amyloid-beta induces chemokine secretion and monocyte migration across a human blood--brain barrier model.* Mol Med, 1998. 4(7): p. 480-9.
- [71] Galimberti, D., et al., *Chemokines in serum and cerebrospinal fluid of Alzheimer's disease patients.* Ann Neurol, 2003. 53(4): p. 547-8.
- [72] Correa, J.D., et al., *Chemokines in CSF of Alzheimer's disease patients.* Arq Neuropsiquiatr, 2011. 69(3): p. 455-9.
- [73] Man, S.M., et al., *Peripheral T cells overexpress MIP-1alpha to enhance its transendothelial migration in Alzheimer's disease.* Neurobiol Aging, 2007. 28(4): p. 485-96.
- [74] Tsukita, S. and M. Furuse, *Occludin and claudins in tight-junction strands: leading or supporting players?* Trends Cell Biol, 1999. 9(7): p. 268-73.
- [75] Stamatovic, S.M., R.F. Keep, and A.V. Andjelkovic, *Brain endothelial cell-cell junctions: how to "open" the blood brain barrier.* Curr Neuropharmacol, 2008. 6(3): p. 179-92.



- [76] Wong, R.K., A.L. Baldwin, and R.L. Heimark, *Cadherin-5 redistribution at sites of TNF-alpha and IFN-gamma-induced permeability in mesenteric venules*. *Am J Physiol*, 1999. 276(2 Pt 2): p. H736-48.
- [77] Forster, C., et al., *Differential effects of hydrocortisone and TNFalpha on tight junction proteins in an in vitro model of the human blood-brain barrier*. *J Physiol*, 2008. 586(7): p. 1937-49.
- [78] de Vries, H.E., et al., *The influence of cytokines on the integrity of the blood-brain barrier in vitro*. *J Neuroimmunol*, 1996. 64(1): p. 37-43.
- [79] Kimura, H., et al., *Cytotoxicity of cytokines in cerebral microvascular endothelial cell*. *Brain Res*, 2003. 990(1-2): p. 148-56.
- [80] Kroemer, G. and S.J. Martin, *Caspase-independent cell death*. *Nat Med*, 2005. 11(7): p. 725-30.
- [81] Garnier, P., et al., *Hypoxia induces caspase-9 and caspase-3 activation without neuronal death in gerbil brains*. *Eur J Neurosci*, 2004. 20(4): p. 937-46.
- [82] Zehendner, C.M., et al., *Caspase-3 contributes to ZO-1 and Cl-5 tight-junction disruption in rapid anoxic neurovascular unit damage*. *PLoS One*, 2011. 6(2): p. e16760.
- [83] Lopez-Ramirez, M.A., et al., *Role of caspases in cytokine-induced barrier breakdown in human brain endothelial cells*. *J Immunol*, 2012. 189(6): p. 3130-9.
- [84] McQuaid, S., et al., *The effects of blood-brain barrier disruption on glial cell function in multiple sclerosis*. *Biochem Soc Trans*, 2009. 37(Pt 1): p. 329-31.
- [85] Ballabh, P., A. Braun, and M. Nedergaard, *The blood-brain barrier: an overview: structure, regulation, and clinical implications*. *Neurobiol Dis*, 2004. 16(1): p. 1-13.
- [86] Plumb, J., et al., *Abnormal endothelial tight junctions in active lesions and normal-appearing white matter in multiple sclerosis*. *Brain Pathol*, 2002. 12(2): p. 154-69.
- [87] Rosenberg, G.A. and Y. Yang, *Vasogenic edema due to tight junction disruption by matrix metalloproteinases in cerebral ischemia*. *Neurosurg Focus*, 2007. 22(5): p. E4.
- [88] Cheng, T., et al., *Activated protein C inhibits tissue plasminogen activator-induced brain hemorrhage*. *Nat Med*, 2006. 12(11): p. 1278-85.
- [89] Zlokovic, B.V., *Remodeling after stroke*. *Nat Med*, 2006. 12(4): p. 390-1.
- [90] Romanitan, M.O., et al., *Occludin is overexpressed in Alzheimer's disease and vascular dementia*. *J Cell Mol Med*, 2007. 11(3): p. 569-79.
- [91] Yang, Y., et al., *Matrix metalloproteinase-mediated disruption of tight junction proteins in cerebral vessels is reversed by synthetic matrix metalloproteinase inhibitor in focal ischemia in rat*. *J Cereb Blood Flow Metab*, 2007. 27(4): p. 697-709.

- [92] Wu, Z., et al., *Role of the MEOX2 homeobox gene in neurovascular dysfunction in Alzheimer disease*. *Nat Med*, 2005. 11(9): p. 959-65.
- [93] Zlokovic, B., *Can blood-brain barrier play a role in the development of cerebral amyloidosis and Alzheimer's disease pathology*. *Neurobiol Dis*, 1997. 4(1): p. 23-6.
- [94] Mackic, J.B., et al., *Human blood-brain barrier receptors for Alzheimer's amyloid-beta 1-40. Asymmetrical binding, endocytosis, and transcytosis at the apical side of brain microvascular endothelial cell monolayer*. *J Clin Invest*, 1998. 102(4): p. 734-43.
- [95] Yan, S.D., et al., *RAGE and amyloid-beta peptide neurotoxicity in Alzheimer's disease*. *Nature*, 1996. 382(6593): p. 685-91.
- [96] Deane, R., et al., *RAGE mediates amyloid-beta peptide transport across the blood-brain barrier and accumulation in brain*. *Nat Med*, 2003. 9(7): p. 907-13.
- [97] Girouard, H. and C. Iadecola, *Neurovascular coupling in the normal brain and in hypertension, stroke, and Alzheimer disease*. *J Appl Physiol* (1985), 2006. 100(1): p. 328-35.
- [98] Zlokovic, B.V., *Neurovascular mechanisms of Alzheimer's neurodegeneration*. *Trends Neurosci*, 2005. 28(4): p. 202-8.
- [99] Bailey, T.L., et al., *The nature and effects of cortical microvascular pathology in aging and Alzheimer's disease*. *Neurol Res*, 2004. 26(5): p. 573-8.
- [100] Zlokovic, B.V., *The blood-brain barrier in health and chronic neurodegenerative disorders*. *Neuron*, 2008. 57(2): p. 178-201.
- [101] Man, S., E.E. Ubogu, and R.M. Ransohoff, *Inflammatory cell migration into the central nervous system: a few new twists on an old tale*. *Brain Pathol*, 2007. 17(2): p. 243-50.
- [102] Buee, L., P.R. Hof, and A. Delacourte, *Brain microvascular changes in Alzheimer's disease and other dementias*. *Ann N Y Acad Sci*, 1997. 826: p. 7-24.
- [103] Weller, R.O. and J.A. Nicoll, *Cerebral amyloid angiopathy: both viper and maggot in the brain*. *Ann Neurol*, 2005. 58(3): p. 348-50.
- [104] Rensink, A.A., et al., *Pathogenesis of cerebral amyloid angiopathy*. *Brain Res Brain Res Rev*, 2003. 43(2): p. 207-23.
- [105] Vinters, H.V., et al., *Microvasculature in brain biopsy specimens from patients with Alzheimer's disease: an immunohistochemical and ultrastructural study*. *Ultrastruct Pathol*, 1994. 18(3): p. 333-48.
- [106] Kalaria, R.N. and P. Hedera, *Differential degeneration of the cerebral microvasculature in Alzheimer's disease*. *Neuroreport*, 1995. 6(3): p. 477-80.
- [107] Selkoe, D.J., *Alzheimer's disease: genes, proteins, and therapy*. *Physiol Rev*, 2001. 81(2): p. 741-66.

- [108] Claudio, L., *Ultrastructural features of the blood-brain barrier in biopsy tissue from Alzheimer's disease patients*. *Acta Neuropathol*, 1996. 91(1): p. 6-14.
- [109] Shibata, M., et al., *Clearance of Alzheimer's amyloid-ss(1-40) peptide from brain by LDL receptor-related protein-1 at the blood-brain barrier*. *J Clin Invest*, 2000. 106(12): p. 1489-99.
- [110] Citron, M., et al., *Evidence that the 42- and 40-amino acid forms of amyloid beta protein are generated from the beta-amyloid precursor protein by different protease activities*. *Proc Natl Acad Sci U S A*, 1996. 93(23): p. 13170-5.
- [111] Tabaton, M., et al., *Soluble amyloid beta-protein is a marker of Alzheimer amyloid in brain but not in cerebrospinal fluid*. *Biochem Biophys Res Commun*, 1994. 200(3): p. 1598-603.
- [112] Masters, C.L., et al., *Amyloid plaque core protein in Alzheimer disease and Down syndrome*. *Proc Natl Acad Sci U S A*, 1985. 82(12): p. 4245-9.
- [113] Wisniewski, T., J. Ghiso, and B. Frangione, *Biology of A beta amyloid in Alzheimer's disease*. *Neurobiol Dis*, 1997. 4(5): p. 313-28.
- [114] Mattson, M.P. and R.E. Rydel, *Alzheimer's disease. Amyloid ox-tox transducers*. *Nature*, 1996. 382(6593): p. 674-5.
- [115] Thomas, T., et al., *beta-Amyloid-mediated vasoactivity and vascular endothelial damage*. *Nature*, 1996. 380(6570): p. 168-71.
- [116] Roher, A.E., et al., *beta-Amyloid-(1-42) is a major component of cerebrovascular amyloid deposits: implications for the pathology of Alzheimer disease*. *Proc Natl Acad Sci U S A*, 1993. 90(22): p. 10836-40.
- [117] Mirra, S.S., M.N. Hart, and R.D. Terry, *Making the diagnosis of Alzheimer's disease. A primer for practicing pathologists*. *Arch Pathol Lab Med*, 1993. 117(2): p. 132-44.
- [118] Griffin, W.S., et al., *Interleukin-1 expression in different plaque types in Alzheimer's disease: significance in plaque evolution*. *J Neuropathol Exp Neurol*, 1995. 54(2): p. 276-81.
- [119] Hull, M., et al., *Occurrence of interleukin-6 in cortical plaques of Alzheimer's disease patients may precede transformation of diffuse into neuritic plaques*. *Ann N Y Acad Sci*, 1996. 777: p. 205-12.
- [120] Quintanilla, R.A., et al., *Interleukin-6 induces Alzheimer-type phosphorylation of tau protein by deregulating the cdk5/p35 pathway*. *Exp Cell Res*, 2004. 295(1): p. 245-57.
- [121] Biere, A.L., et al., *Amyloid beta-peptide is transported on lipoproteins and albumin in human plasma*. *J Biol Chem*, 1996. 271(51): p. 32916-22.
- [122] Mecocci, P., et al., *Blood-brain-barrier in a geriatric population: barrier function in degenerative and vascular dementias*. *Acta Neurol Scand*, 1991. 84(3): p. 210-3.
- [123] Mattila, K.M., et al., *Altered blood-brain-barrier function in Alzheimer's disease?* *Acta Neurol Scand*, 1994. 89(3): p. 192-8.

