

# We are IntechOpen, the world's leading publisher of Open Access books Built by scientists, for scientists

4,800

Open access books available

122,000

International authors and editors

135M

Downloads

Our authors are among the

154

Countries delivered to

TOP 1%

most cited scientists

12.2%

Contributors from top 500 universities



WEB OF SCIENCE™

Selection of our books indexed in the Book Citation Index  
in Web of Science™ Core Collection (BKCI)

Interested in publishing with us?  
Contact [book.department@intechopen.com](mailto:book.department@intechopen.com)

Numbers displayed above are based on latest data collected.

For more information visit [www.intechopen.com](http://www.intechopen.com)



---

# The Molecular Frame of Pancreatic Carcinogenesis

---

Elisabeth Heßmann, Sandra Baumgart,  
Nai ming Chen, Shiv Singh, Garima Singh,  
Alex König, Albrecht Neeße and Volker Ellenrieder

Additional information is available at the end of the chapter

<http://dx.doi.org/10.5772/57422>

---

## 1. Introduction

Annually, approximately 43,140 people are diagnosed (incidence 10-12/100000) with pancreatic ductal adenocarcinoma (PDAC) in the United States and the mortality rate of 36800 almost equals this number [1]. PDAC ranks fourth on the list of cancer-related causes of death and despite extensive scientific and clinical effort, the prognosis of this exceptionally lethal disease has not improved significantly over the past decades [2]. Surgical resection, for which only a minority (less than 20%) of the patients qualify due to late diagnosis in advanced stages, is currently the only chance of cure, improving 5-year survival rates from <4% if left untreated to 20-30% after resection [3]. Unresectable tumors are characterized by early invasion and metastases as well as by an extreme chemoresistance. Despite subtle progress over the years in terms of therapeutic strategies in many malignancies, no major conventional treatment options have come forward from numerous clinical trials in pancreatic cancer.

Considering its bad prognosis much effort was put into revealing the hidden secrets of pancreatic cancer that explain the severity of this disease. Among the different fields of tumor biology in pancreatic cancer research, this chapter will focus on the morphological and molecular features that cause and accompany pancreatic carcinogenesis.

## 2. Morphological features of pancreatic carcinogenesis

Although there was little improvement in pancreatic cancer treatment during the past decades, much effort has been made in understanding the pathogenesis of pancreatic cancer. In contrast to its rapid progress after diagnosis, recent published data clearly show that the clonal

evolution of the earliest alterations in cancer initiating cells towards frankly invasive and metastasized PDAC takes at least more than a decade [4, 5]. This creates an important window of opportunity for early detection and much effort is put into attempts to map the molecular and morphological changes resulting in pancreatic cancer formation.

The current model of pancreatic carcinogenesis describes a stepwise process from healthy acinar cells to frank pancreatic adenocarcinoma: Recent lineage-tracing studies have shown that acinar cells harboring molecular alterations are induced to transdifferentiate, generating duct-like cells through a process known as acinar-to-ductal metaplasia (ADM) [6]. ADM lesions then convert to precancerous pancreatic intraepithelial neoplasia (PanIN) that progress to PDAC over time [7]. PanIN lesions are found in the smaller pancreatic ducts and are classified in four grades based on the degree of dysplasia reflected in the cytonuclear atypia and architectural change of the epithelial cell: PanIN-1A, -1B, -2 and -3 [7]. The lowest grade PanIN lesions can be flat (-1A) or papillary (-1B), but are characterized by absence of nuclear atypia and retained nuclear polarity. PanIN-2 lesions show micropapillary features with evidence of nuclear atypia and infrequent mitoses. PanIN-3 lesions demonstrate all hallmarks of cancer, including a widespread loss of polarity, nuclear atypia and frequent mitoses and are considered as *Carcinoma in situ* [1, 8]. Yet, the lesion is confined within the basement membrane and no invasive growth is present. The increasing grades of dysplasia in the various PanIN lesions manifest the morphological steps of tumor progression that precede invasive PDAC. These consecutive steps of tumor progression are accompanied by a cumulative occurrence of molecular alterations.

### 3. Molecular characteristics of pancreatic carcinogenesis

#### 3.1. Genetic alterations in pancreatic carcinogenesis

For many decades pancreatic cancer was described as an exclusively genetic disease. In 2008 Jones and colleagues discovered 1561 somatic gene mutations within more than 20000 analyzed genes, yielding an average rate of 63 genetic abnormalities per pancreatic cancer, emphasizing the extreme complexity of this disease [9]. These genetic alterations can be clustered in 12 partially overlapping signaling pathways (compare Fig. 1). Five of the pathways comprise specific cellular functions: apoptosis, DNA-damage repair, G1/S phase cell cycle progression, cell-cell adhesion and invasion.

Apoptosis or programmed cell death, plays an essential role in carcinogenesis since resistance to apoptosis is a key factor of the survival of a cancer cell [1]. In PDAC, genes implicated in the apoptosis pathway (Bcl2, Mcl-1, p53, NF-kB among others) were found altered in all tumors studied and many reports document impaired apoptotic signaling in this disease [10, 11]. For example, a high fraction of apoptotic cells has been correlated with longer overall survival as well as absence of nodal involvement [12]. Moreover, resistance to chemotherapeutics is mostly a result of defective apoptosis pathways.

DNA damage control genes code for proteins that repair any damage that occurs in the cell during its lifespan and thus are responsible for safeguarding the integrity of DNA [1]. For

instance, the BRCA2 protein is involved in DNA damage repair, especially after occurrence of interstrand breaks [13]. Germline BRCA2 gene mutations are responsible for approximately 10% of familial pancreatic cancers [14]. Mismatch repair family (MMR) genes target base substitution mismatches as well as intersequence deletions that arise as a result of errors occurring regularly during replication. Alterations in these mismatch repair genes lead to genetic instability and make the genome vulnerable for additional, more severe genetic alterations [15].

One of the most important and best studied proteins involved in DNA damage repair is the tumor suppressor protein p53. p53 is responsible for the cellular response to genotoxic stress as it mediates apoptosis and cell cycle arrest [16]. p53 is frequently disrupted in many human malignancies and the tumor suppressor is lost in 50-75% of PDACs [17].

Cell cycle regulation and progression is affected in virtually all transformed pancreatic cells. Enhanced activation of genes promoting G1/S-phase transition or loss of cell cycle inhibitors results in uncontrolled cell division which facilitates tumor progression and unrestrained tumor growth [1].

In normal pancreatic tissue, cells are anchored to each other and their surroundings via multiple connections. A decrease in these interactions can allow cells to detach from their surroundings and allows transformation, migration and metastasis. As such, cell to cell adhesion and interaction plays an important role in carcinogenesis [18, 19].

The other pathways discovered by Jones and colleagues which proved to be frequently affected by genetic alterations in pancreatic cancer are signaling cascades that can be divided into three groups: embryonic signaling pathways, MAPKinase signaling pathways and TGF $\beta$ -signaling pathways [9]. The transforming growth factor  $\beta$  (TGF $\beta$ ) pathway has been linked to PDAC for many years. TGF $\beta$  signaling is involved in a wide range of cellular processes including differentiation, proliferation, apoptosis and angiogenesis [20]. As discussed in detail later in this chapter, TGF $\beta$  signaling functions as a double-edged sword as it comprises tumor-suppressive as well as oncogenic qualities.

All MAPK signaling pathways consist of the same basic kinase components. Stimulation of an upstream MAP2K kinase by growth factors, stress or other extracellular signals leads to phosphorylation of one of the terminal MAPK: extracellular signal-regulated kinase (Erk), c-Jun N-terminal kinase (JNK) or p38 [8]. These signaling cascades result in the activation of multiple oncogenic cellular functions.

One growth factor receptor responsible for many signaling events in early carcinogenesis is the Epidermal Growth Factor Receptor (EGFR). EGFR is located in the cell membrane and is activated by binding of its specific ligands, including epidermal growth factor (EGF) and Transforming Growth Factor alpha (TGF $\alpha$ ) [6, 21]. Upon activation, EGFR undergoes dimerization, thus stimulating its intrinsic intracellular protein-tyrosine kinase activity resulting in autophosphorylation of several tyrosine residues in the C-terminal region of the receptor. This autophosphorylation elicits activation of numerous downstream kinases and signal transduction cascades that modulate cancer associated phenotypes as cell proliferation, migration and adhesion [6]. Recent work has proven a high impact of EGFR signaling on induction of

pancreatic metaplasia, and overexpression of the receptor already occurs in early pancreatic precursor lesions [6, 21]. The relevance of EGFR dependent signal cascades was emphasized by a therapeutic beneficial effect of the EGFR inhibitor Erlotinib in a subgroup of pancreatic cancer patients [22].

Since embryogenesis shares many characteristics with carcinogenesis, not surprisingly many embryonic pathways are involved in tumor development. The three embryonic pathways operative in pancreatic carcinogenesis are the Hedgehog-, Notch- and Wnt-signaling cascades [9]. Several studies have shown upregulation of these pathways during pancreatic carcinogenesis and in invasive pancreatic cancer and their inhibition results in decreased tumor proliferation and enhanced apoptosis [1]. For instance, activation of the Notch signaling pathway is involved in cell proliferation and angiogenesis in a variety of human cancers, including pancreatic cancer [23]. Notch signaling is initiated when Notch ligand binds to its receptor between adjacent cells. Upon activation, Notch is cleaved and releases the Notch intracellular domain (NICD) via a cascade of proteolytic enzymes including  $\gamma$ -secretase. Finally, NICD translocates into the nucleus and activates its target genes such as Hes-1, Hey-1, Cyclin D1 and cMyc [24]. Additional to its growth promoting functions accumulating evidence shows a molecular link between Notch and epithelial-to-mesenchymal transition (EMT) in pancreatic cancer [25]. During the EMT process, epithelial cells gain a mesenchymal phenotype accompanied by the cumulative expression of the mesenchymal markers Vimentin, Slug, Snail and ZEB1 and reduced expression of the epithelial marker E-cadherin. EMT-type cells harbor an increased migratory and invasive capacity resulting in invasion and spread of tumor cells even during early carcinogenesis [26]. Inhibition of Notch-signaling leads to reduction of EMT resulting in a better clinical outcome [25].

Similar to Notch-signaling, the hedgehog pathway belongs to the developmental programs of pancreatogenesis. The hedgehog gene was originally identified in *Drosophila* when a large-scale screening for mutations revealed an altered segmentation pattern of larvae, resulting in a short, fat larva covered in a "lawn" of denticles resembling a hedgehog [27]. Early in development, around embryonic day 8.5-9.0, the hedgehog ligands Indian Hedgehog (Ihh) and Sonic hedgehog (Shh) are expressed throughout the endodermal epithelium of the primitive gut but are noticeably absent in the developed organ [28]. Sonic hedgehog signaling is reactivated in the case of pancreatic regeneration, for example in response to inflammation-associated pancreatic injury [29]. Through inappropriate activation of these pathways, chronic injury might contribute to misdirection of tissue repair, ultimately resulting in neoplasia. Aberrant expression of members of the hedgehog-pathway in chronic pancreatitis and pancreatic carcinogenesis was first noted by Kaye and colleagues [30]. Subsequent research proved that the ligand Shh is expressed aberrantly in pancreatic cancer and its precursor lesions and that Shh functions as a mediator of cancer initiation and growth [31]. Mice with transgenic misexpression of Shh in the pancreatic endoderm develop lesions resembling PanIN, and hedgehog inhibition induces apoptosis and blocks proliferation in pancreatic cancer cells *in vivo* and *in vitro* [31]. Thus, hedgehog signaling can be described as an early and late mediator of pancreatic ductal adenocarcinoma.



Conceptually, these data suggest that pancreatic cancer is substantially a disease of pathways. But research into these pathways rendered clearly that these cascades must ultimately engage the function of epigenetic regulators to influence gene expression in a heritable manner. Thus studies into epigenetics in pancreatic cancer demonstrate a logical extension to the genetic paradigm of this malignant disease.

Signaling pathway	Affected genes
Apoptosis	p53, NF- $\kappa$ B, PI3K/Akt
DNA damage repair	p53, BRCA2, MMR-genes
G1/S transition	p16 <sup>ink4a</sup> , p14 <sup>arf</sup> , p15 <sup>ink4b</sup> , Cyclin D
Regulation of invasion	TGF $\beta$ , Integrin signaling
Embryonic signaling	Notch, Hedgehog, Wnt
MAPK signaling	Erk, Jnk, p38
TGF $\beta$ signaling	TGF $\beta$ , Smad-proteins

**Figure 1. The commonly altered signaling pathways in PDAC accompanied by affected genes from these pathways** (adopted from [1]).

#### 4. Epigenetic mechanisms in pancreatic carcinogenesis

Epigenetics are defined as any heritable genomic mechanism unrelated to changes in the DNA sequence [32]. Epigenetic modifications are involved in normal cellular development and maintenance, but they are also responsible for deregulation of gene expression, resulting in diseased cellular phenotypes. Most notably, deregulation of epigenetic mechanisms can contribute to cancer development [33-38]. The past years have witnessed an explosive increase in our knowledge about epigenetic features in pancreatic carcinogenesis. Several well-known epigenetic mechanisms are active in pancreatic cancer, sub-divided into DNA methylation, histone modification and microRNAs, all of them affecting the cell by induction or suppression of gene expression [39-42]. For instance, the introduction of genome-wide screening techniques has accelerated the discovery of a growing list of genes with abnormal methylation patterns in the transforming pancreatic epithelial cell that play a role in the neoplastic process [43]. Hypermethylation of promoter cytosine-phospho-guanine (CpG) islands is closely linked to gene silencing and loss of tumor suppressor function in many cancer entities [44]. Since the first detailed analysis of DNA hypermethylation in pancreatic cancer was reported in 1997 by Schutte et al., many tumor-suppressor or cancer-related genes that undergo aberrant methylation during pancreatic cancer development have been identified, including APC, RUNX3, SOCS-1, p16<sup>ink4a</sup>, Cyclin D2 and CHD13 [44, 45].

By influencing the structure of chromatin, in addition to DNA methylation, posttranslational modifications of histone tail residues highly affect the transcriptional activity of genes. While acetylation of histones is primarily associated with transcriptional activation, methylation of histones can lead to both, activation and repression, depending on the modified residue [46,

47]. For instance, Polycomb proteins, which are known for their crucial role in induction of repressive histone modifications, embody oncogenic properties in many human cancers. Polycomb proteins can be divided into two functional biochemical categories, Polycomb repressive complexes (PRC) 1 and 2. While members of the PRC 2 complex initiate gene repression by catalysation of H3K27 trimethylation, proteins belonging to PRC1 maintain the repressive state [48, 49]. Under physiological conditions, the activity of Polycomb proteins is crucial in development as well as in maintenance and proliferation of pluripotent progenitor cells in a variety of tissues. Overexpression of these proteins may promote tumorigenesis by fostering a self-renewing population of cells [50, 51]. Indeed, overexpression of Polycomb proteins is responsible for malignant progression and poor prognosis in breast [52], bladder [53] and prostate [54] cancer and shows strong association with hallmarks of cancer, including induced cellular proliferation [55], angiogenesis [56], survival [57] and migration [58]. Enhancer of Zeste Homolog 2 (EZH2) is the only PRC2 protein member thus far studied in pancreatic cancer. Strong nuclear accumulation of EZH2 was found in 55% of well differentiated tumors and 98% of poorly differentiated samples in a comprehensive immunohistochemical analysis of PDACs, indicating a significant correlation between EZH2 expression and dedifferentiation in pancreatic cancer [59]. Additionally, EZH2 overexpression participates in epithelial-to-mesenchymal transition (EMT) and invasion through repression of epithelial proteins like E-cadherin [60].

The third group among the epigenetic players in pancreatic carcinogenesis comprises the MicroRNA (miRNA) family, a class of small non-protein coding RNAs which participate in post-transcriptional control of gene expression in eukaryotic organisms [61]. In the last years, advanced global screening technologies have enabled large scale analyses of miRNA profiles in diverse tissue samples, indicating that miRNAs can function as either oncogenes or tumor suppressors in the development of various cancer types, including pancreatic cancer [62, 63]. The analysis of miRNA expression patterns has let to completely novel insights into pancreatic cancer biology. Specific miRNAs, such as the miR-200 family, miR-34a and miR-155 are involved in PDAC-biology by regulating genes associated with metastasis and cell stemness [64, 65].

The era of epigenetics in pancreatic cancer has emerged strongly within the last years and deepened our understanding of pancreatic cancer biology. One of the most important characteristics of epigenetic mechanisms which clearly demarcates them from genetics is their reversibility. This feature provides new targets for novel therapeutic interventions in pancreatic cancer and other epithelial tumors.

The manifold genetic and epigenetic events observed in pancreatic carcinogenesis mirror the complexity of this malignancy and lead to the assumption that targeting one molecular feature of pancreatic carcinogenesis is not sufficient for successful pancreatic cancer treatment. Though inaccessible for therapeutic options, there exists at least one molecular event found in virtually all invasively growing pancreatic tumors and their precursor lesions: The constitutive activation of oncogenic Kras probably demonstrates the most important and best studied event in pancreatic carcinogenesis.

## 5. Impact of Kras activation on pancreatic carcinogenesis

The mutation of Kras belongs to the earliest events in pancreatic carcinogenesis. Kras proteins comprise a family of signal-transducing GTPases that mediate a wide variety of cellular functions including proliferation, differentiation and survival and are frequently mutated in human cancers [66]. Although Kras is a GTPase, its intrinsic activity is inefficient and requires GTPase activating proteins to promote GTP hydrolysis and attenuate downstream signaling [1]. Oncogenic mutation of Kras (Kras<sup>G12D</sup>) is generally accepted to represent the initial key event in pancreatic carcinogenesis and found in virtually all invasively growing pancreatic tumors [7]. Due to its prominent role in pancreatic carcinogenesis Kras is considered to be an attractive therapeutic target of PDAC-treatment, but specific biochemical properties of the protein have made this an elusive goal [67]. Activating Kras point mutations at codon 12 (from GGT to GAT or GTT and more rarely CGT) result in substitution of glycine with aspartate, valine or arginine. Oncogenic Kras mutations lock the protein in its GTP-bound form thus permitting its constitutive interaction with and activation of multiple effectors, independent on growth factor stimulation [67].

The activation of Kras engaged effector pathways, like the RAF-mitogen-activated kinase (MAPK)-cascade, phosphoinositide-3-kinase- (PI3K) signaling and the Ral GDS pathway results in stimulation of proliferation, invasion, metastases and survival thus enabling pancreatic cancer progression [3]. Given the aforementioned limitations in Kras inhibition, these downstream targets may provide alternative effective points of therapeutic intervention and thus are the focus of ongoing studies in pancreatic specific systems.

The impact of constitutive Kras activation is not limited on the epithelial cell but also participates in the modulation of the tumor environment. One hallmark of PDAC is an extensive stromal remodeling, the most prominent features of which are the recruitment of inflammatory and mesenchymal cells as well as fibrotic replacement of pancreatic parenchyma [68]. Recent studies revealed that even early stages of PanIN development are associated with a stromal reaction, which is characterized by a robust desmoplastic response and recruitment of immune cells. Subclasses of these immune cells, immature myeloid cells, suppress infiltrating T cells and thus establish an immune privilege in the tumor microenvironment promoting pancreatic carcinogenesis [69, 70]. Mechanistically, constitutive activation of Kras in pancreatic ductal cells triggers the production of the cytokine GM-CSF, which, in turn, promotes the expansion of immunosuppressive myeloid cells, leading to the evasion of CD8<sup>+</sup> T-cell-driven-antitumor immunity [69, 70].

Due to its high biological relevance for pancreatic carcinogenesis, a genetically engineered mouse model (GEMM) with pancreas specific Kras mutation was created, allowing detailed investigations of morphological as well as molecular features of this disease [71]. This transgenic mouse model bares a mutation of the endogenous murine Kras gene specifically in pancreatic progenitor cells by crossing mice with a conditionally activated Kras allele (LSL-Kras<sup>G12D</sup>) to transgenic strains that express Cre recombinase in pancreatic lineages (PdxCre or p48Cre). These “KC” mice develop low and high grade PanIN lesions recapitulating pancreatic carcinogenesis in the human situation but only slowly progress



to PDAC at an advanced age [71]. This mouse model taught us that in spite of the requirement of Kras-activation for pancreatic cancer development oncogenic Kras mutation alone fails to transform precursor lesions into invasive cancer due to activation of powerful fail-safe mechanisms (compare Fig. 2).

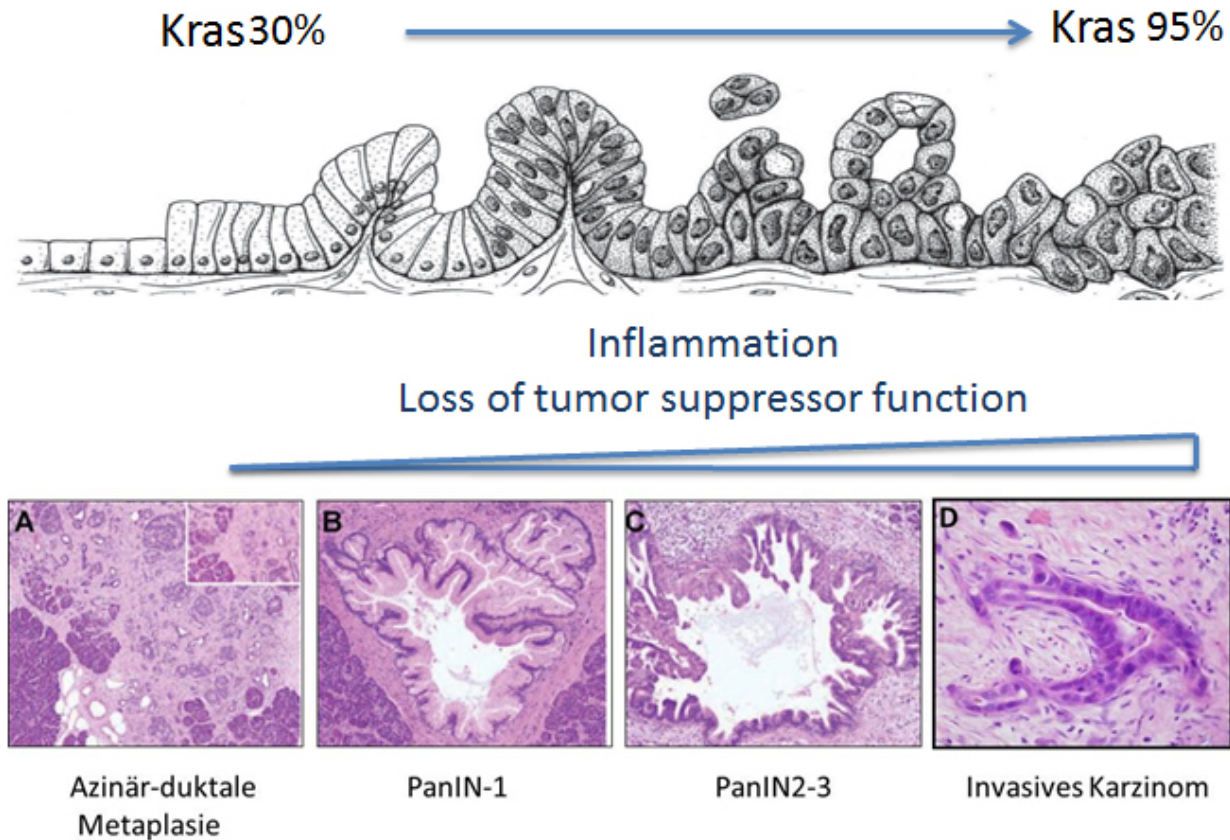
Counteracting transformation and growth, cellular senescence, a permanent cell growth arrest, is increasingly recognized as one of the most critical fail-safe programs in pancreatic carcinogenesis [72]. A major cause of this permanent growth arrest was found in telomeres, which are non-coding nucleoprotein complexes positioned in the extremes of chromosomes [73]. During successive cellular divisions, telomeres in normal human cells shorten progressively and, when telomeres erode down below a threshold length, the cell ceases to divide itself and becomes senescent. Importantly, senescence can also be observed in the absence of any detectable telomere shortening or dysfunction in numerous conditions such as cellular stress or oncogene activation. Oncogene induced senescence (OIS) has emerged as a powerful tumor suppressor mechanism protecting cells from unrestrained proliferation imposed by oncogenic signaling [74]. It has been proven that normal cells, when forced to express high levels of oncogenic Ras, undergo a permanent and irreversible cell cycle arrest [75]. OIS is frequently found in premalignant lesions but is essentially absent in advanced cancers, suggesting that malignant tumor cells can find ways to bypass or escape senescence [76].

Pancreas specific expression of oncogenic Kras<sup>G12D</sup> promotes an initial burst of proliferation accompanied by the development of PanIN precursor lesions before cells stop dividing. These precursor lesions then exhibit many features of senescence including positive senescence-associated  $\beta$ -galactosidase staining and induction of cell cycle inhibitors [77]. Successful progression of PanIN lesions towards frank adenocarcinoma requires evasion from senescence. This can result from additional genetic or epigenetic events concerning major tumor suppressor pathways, namely the p19<sup>Arf</sup>-p53 pathway and the p16<sup>Ink4a</sup>-Rb cascade [74].

## 6. Role of tumor suppressor inactivation in pancreatic carcinogenesis

The p53 protein plays a central role in modulating cellular responses to cytotoxic stress by contributing to both, cell cycle arrest and programmed cell death [3]. Signals of mitogenic oncogenes, such as cMyc or Kras lead to activation of p53, which depending on cell type and stimulus induces either apoptosis or senescence and consequently leads to the elimination of cells with oncogenic activation. p53 is integrated in a complex network of upstream sensors and downstream effectors. An important sensor of oncogenic signals for p53 is p19<sup>Arf</sup>, which is encoded in an alternative reading frame (ARF) by the tumor suppressor locus CDKN2A [78]. Activation of p19<sup>Arf</sup> antagonizes the effect of the E3 ubiquitin ligase MDM2 that acts upon p53 to initiate its proteasomal degradation, thereby contributing to the stabilization of the tumor suppressor gene [74]. In the nucleus, stabilized p53 binds to promoters of more than 300 target genes with implications for cell growth control. One such important p53 downstream target is p21. p21 binds to and inhibits the activity of Cyclin-CDK2 and Cyclin-CDK1 complexes and thus functions as a negative regulator of cell cycle progression at the G1 phase [79].

In agreement with its key role in senescence and tumor suppression, mutational p53 inactivation is associated with accelerated carcinogenesis in many tumor entities [80]. In the pancreas, p53 inactivation on chromosome 17 has been reported in 50-75% of carcinomas [1]. In the murine pancreas carcinoma model, genetic loss of p53 allows Kras to bypass senescence resulting in 100% penetrance at an early age, thus recapitulating human PDAC including histopathological similarities in neoplastic cells, desmoplasia and occurrence of liver and lung metastases [81].



**Figure 2. Current model of pancreatic carcinogenesis:** on the background of Kras mutation ADM lesions progress to PanIN-precursor lesions and invasive carcinoma depending on additional signals as loss of tumor suppressor function or activation of inflammatory pathways. A: Acinar-ductal metaplasia, B: PanIN-1, C: PanIN-2-3, D: Invasive pancreatic cancer.

The p16<sup>Ink4a</sup> gene, located on the short arm of chromosome 9, is one of the most frequently inactivated tumor suppressor genes in pancreatic cancer [1, 2]. Remarkably, virtually all pancreatic carcinomas bear loss of p16<sup>Ink4a</sup> function, in 40% of pancreatic cancer through homozygous deletion, in 40% by intragenic mutation coupled with loss of the second allele, and in 15% by hypermethylation of the p16<sup>Ink4a</sup> gene promoter [8].

The protein p16<sup>Ink4a</sup> belongs to the cyclin D-dependent kinase (CDK) inhibitor family and functions to prevent the phosphorylation of Rb-1 by CDK 4 and 6, resulting in a blockage of G1/S-phase transition of the cell cycle [82]. This event is a decisive step in the inhibition of cell

cycle progression and also in senescence initiation. In contrast to that, loss of p16<sup>Ink4a</sup> results in inappropriate phosphorylation of Rb-1, thereby facilitating progression of the cell cycle through enhanced G1/S transition [1-3, 74].

Additional to inactivation of tumor suppressor genes, Kras-initiated pancreatic carcinogenesis can be promoted by signals from the inflammatory environment [69, 70]. This type of proinflammatory environment can be provided by chronic pancreatitis, the most relevant risk factor for PDAC development in human [83]. Chronic pancreatitis supports the initiation and progression of this malignancy by direct modification of gene expression networks in pancreatic epithelial cells. For instance, pancreatitis contributes to tumor progression by abrogating the senescence barrier characteristic of low-grade PanIN lesions [84]. Most importantly, chronic pancreatitis induces a wide range of proteins, predominantly inflammatory transcription factors. The majority of these inflammatory transcription factors inhabits oncogenic potential, mediated by inhibition of tumor suppressor genes or synergism with Kras<sup>G12D</sup> signaling to promote pancreatic carcinogenesis.

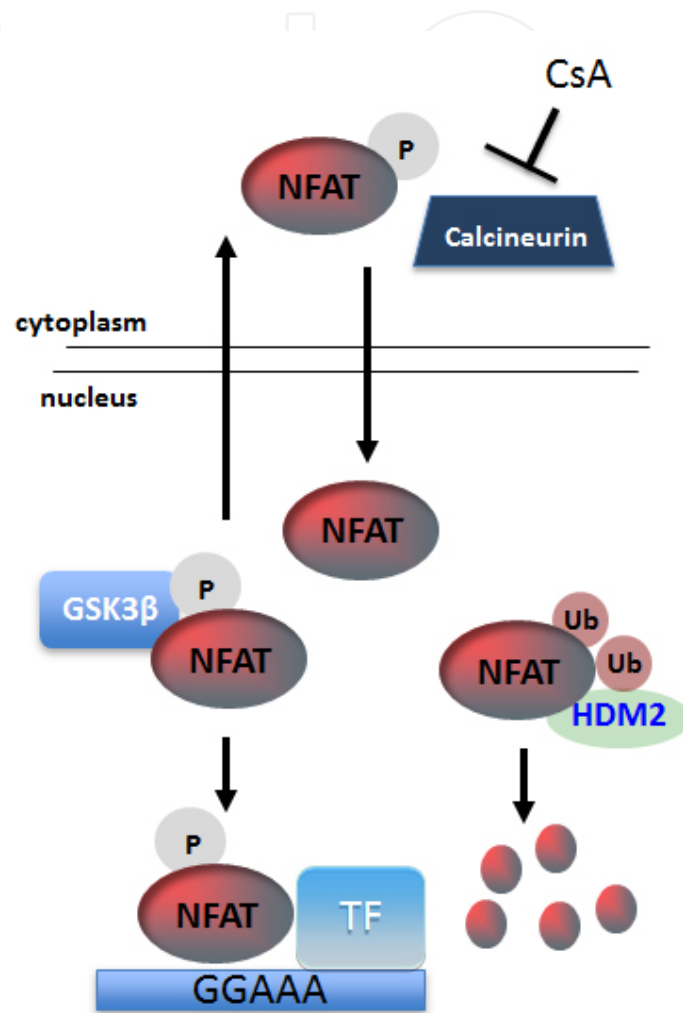
By introducing the inflammatory family of Nuclear factor of activated T cells (NFAT) proteins, the following part of the chapter will cite an example how deregulated oncogenes participate in and cooperate with Kras<sup>G12D</sup> mediated signaling in every single step of pancreatic carcinogenesis, beginning from induction of ADM over progression of pancreatic precursor lesions to frank invasive pancreatic ductal adenocarcinoma.

## 6.1. NFAT proteins and their role in pancreatic carcinogenesis

### 6.1.1. *The family of NFAT transcription factors and their cellular regulation*

The NFAT family, first described as a regulator of T cell activation and differentiation, comprises four calcium-responsive isoforms named NFATc1, NFATc2, NFATc3 and NFATc4 as well as a more distant relative, NFAT5 [85]. In resting cells, NFAT factors are located in the cytoplasm in a highly phosphorylated, inactive state [85, 86]. Ligand binding to many receptors results in the activation of phospholipase C (PLC), the release of IP<sub>3</sub> and in a transient release of Ca<sup>2+</sup> from intracellular stores through IP<sub>3</sub> receptors. This initial release of Ca<sup>2+</sup> demonstrates the prerequisite for increased influx of Ca<sup>2+</sup> through specialized Ca<sup>2+</sup> released activated channels (termed CRAC) [86]. CRACs provide the persistent Ca<sup>2+</sup> signal that is necessary for sufficient activation of the phosphatase calcineurin that targets and dephosphorylates moderately conserved serine rich motifs in the N-terminal homology region of NFAT proteins to unmask its nuclear localization signals [87]. Subsequently, NFAT proteins shuttle into the nucleus where they are either ubiquitinated for HDM2-dependent proteasomal degradation or stabilized by GSK3β-mediated phosphorylation (compare Fig. 3) [88]. Upon stabilization the transcription factor recognizes its GGAAA consensus sequence within target gene elements and binds DNA either as homodimer or heterodimer [85-88]. In fact, NFAT proteins frequently cooperate with other transcription factors to elicit high-affinity binding on common target genes. GATA Proteins, FoxP3 and members of the MEF family are only few among a wide range of NFAT partner proteins [89]. Additionally, NFAT recruits other signaling regulated transcription factors (e.g. Smad3 and NKκB) to integrate pathway specific signals to

Ca<sup>2+</sup>/calcineurin regulated transcription [90]. Thus, NFAT transcription complexes function as signal integrators and detectors. One signal has to be Ca<sup>2+</sup>/calcineurin, while the second one can have developmental origin or can embody oncogenic qualities as the Ras-MAP kinase pathway [89, 90]. Doing so, the cooperation between NFAT and its partners helps controlling the specificity of NFAT target gene binding and the resulting mode of action.



**Figure 3. NFAT signaling in pancreatic cancer.** Upon Ca<sup>2+</sup> - dependent activation of Calcineurin, NFAT becomes dephosphorylated and shuttles into the nucleus. The calcineurin-inhibitor Cyclosporin A (CsA) prevents NFAT activation. In the nucleus GSK3β-dependent phosphorylation of NFAT either leads to its nuclear export or allows binding to target genes in association with partner transcription factors. Ubiquitination of NFAT proteins labels them for proteosomal degradation by HDM2.

## 7. Oncogenic potential of NFAT signaling

The NFAT family of transcription factors was originally identified as a group of inducible nuclear proteins which regulate transcription during T lymphocyte activation [91]. Following



their initial discovery, a multitude of studies quickly established that NFAT proteins are also expressed outside the immune system where they participate in the regulation of the expression of genes influencing cell growth and differentiation [86]. One of the first studies implicating NFAT factors in cell proliferation was performed in fibroblasts, in which constitutively active NFATc1 induces cell transformation and colony formation [92]. Similarly, in pancreatic tumor cells proliferation and anchorage-independent growth is - at least in part - dependent on calcineurin activity and nuclear translocation of NFAT proteins [93]. This is consistent with high levels of nuclear NFAT in pancreatic cancer cells and in particular in those cells with accelerated growth. Nowadays, ectopic activation of NFAT members is recognized as an important aspect of oncogenic transformation in several human malignancies, most notably in pancreatic cancer [88, 93]. Proliferation and anchorage-independent growth of cultured pancreatic cancer cells is significantly attenuated by inhibition of  $Ca^{2+}$ /Calcineurin signaling with Cyclosporin A or siRNA-technology-mediated depletion of NFATc1 [94]. Besides proliferation and growth, NFAT proteins incorporate additional features of tumor biology. Being downstream mediators of  $\alpha6\beta4$  integrin signaling NFATc2 and NFAT5 promote cancer invasion in breast and colon cancer [95]. Stimulation of angiogenesis through upregulation of VEGF and enhancement of tumor cell migration via transcriptional activation of Cox2 are additional oncogenic features of NFAT proteins [86, 96].

GEMM with constitutive activation of NFATc1 revealed increased cellular proliferation in pancreata of young mice but mice bearing a constitutive activation of NFATc1 failed to develop advanced PanIN lesions within a one-year observations span. In contrast to mice bearing an isolated transgenic induction of NFATc1, mice carrying combined constitutive activation of Kras and NFATc1, a situation found in 70% of human PDACs, surprise with a dramatically shortened survival compared to the Kras<sup>G12D</sup> animals [Baumgart et al., unpublished data]. Further resembling human PDAC, Kras<sup>G12D</sup>;NFATc1 mice develop severe cachexia and abdominal distension caused by the accumulation of sanguineous ascites and bile duct obstruction. At necropsy, the pancreata from Kras<sup>G12D</sup>;NFATc1 mice are enlarged by tumor mass, which contains both solid and cystic regions. Notably, pancreata from Kras<sup>G12D</sup>;NFATc1 mice express nuclear NFATc1 throughout carcinogenesis and at equivalent levels to those observed in human PDAC.

Beyond doubt, the experience with the described transgenic mouse model which recapitulates human PDAC disease in a very accurate manner clearly shows that activation of NFAT proteins works synergistically with Kras signaling and leads to acceleration of pancreatic carcinogenesis. Further investigations shot light on the NFAT dependent mechanisms facilitating and hastening pancreatic carcinogenesis.

## 8. NFATc1 function in ADM

The cellular origin of PDAC has been a controversial topic for many decades. PDAC has long been considered to be a disease of pancreatic ducts. However, early efforts to model the disease by forcing Kras expression in pancreatic duct cells did not yield discernable pathology [97]. In



recent years, increasing evidence arised that PanIN precursor lesions and invasive PDAC originate from differentiated acinar cells. The development of duct-like PanIN lesions from acinar cells requires massive remodeling of these cells, both morphologically and with respect to gene expression profiles. The transition from acinar to ductal cell properties has been termed acinar-to-ductal metaplasia (ADM) and lineage tracing experiments have confirmed that this process is a result of direct transdifferentiation from adult acinar cells that convert to a ductal phenotype upon expression of constitutive active Kras [97, 98]. In murine and in human samples, ADM development has been shown to precede PanIN formation, suggesting that ADM represents the first step of pancreatic carcinogenesis.

Appreciating the relevance of ADM for pancreatic cancer development, much effort was put into research on the molecular mechanisms facilitating ADM. As a transcription factor that is involved in differentiation processes in many tissues NFAT constitutes a promising candidate to mediate ADM. Indeed, NFATc1 is highly operative in pancreatic ADM, while only rare expression of the transcription factor can be found in acinar cells. *In vitro* and *in vivo* studies have revealed that Kras<sup>G12D</sup> driven ADM requires ligand-dependent activation of the Epidermal growth factor receptor [6, 21]. Careful molecular studies have proven that EGFR signaling – at least in part – is mediated via NFATc1. Most importantly, in spite of active EGFR signaling, pharmacological or genetic inactivation of NFATc1 in acinar cell explants extracted from Kras<sup>G12D</sup> mice reduces duct formation *in vitro*. Furthermore, Kras<sup>G12D</sup> mice harboring a pancreas specific transgenic inactivation of NFATc1 are less susceptible to inflammation induced ADM and show a significant delay of pancreatic carcinogenesis [unpublished data]. These findings clearly indicate a key role of NFAT signaling in the initial steps of pancreatic carcinogenesis.

## 9. NFATc1 and STAT3 cooperation in pancreatic carcinogenesis

Recent investigations established that NFATc1 cooperates with the signal transducer and activator of transcription-3 (STAT3) [Baumgart et al., unpublished data]. Like NFAT proteins, STAT3 is also regulated primarily at the level of its subcellular localization [90]. In resting cells, STAT3 resides in a non-phosphorylated version in the cytoplasm. However, following cytokine or growth factor stimulation, STAT3 proteins are inducibly phosphorylated on critical regulatory tyrosine residues promoting their homodimerization and subsequent translocation into the nucleus where they control gene transcription [99]. Interestingly, genetic depletion of STAT3 attenuates the transformation capacity of NFATc1, suggesting a cooperative function of both transcription factors in pancreatic cancer. From the mechanistic point of view, NFATc1 interacts with STAT3 to form enhancer-promoter communications at jointly regulated genes involved in inflammation and oncogenesis, e.g. EGFR and Wnt-family members. The NFATc1-STAT3 transcription pathway is operative in pancreatitis-mediated carcinogenesis as well as in established human pancreatic cancer [Baumgart et al., under review].

## 10. Impact of NFAT proteins on the inflammatory tumor environment

Cancer-associated inflammation plays an important role in restraining anti-tumor immunity, particularly in pancreatic cancer for which a massive infiltration of immunosuppressive leukocytes into the tumor stroma is an early and consistent event in carcinogenesis [84]. In contrast to many other solid tumors, intratumoral T cells are rare in pancreatic cancer, which is associated with an immune escape and bad prognosis [70]. In PDAC, increasing evidence suggests, that oncogenic Kras drives an inflammatory program that establishes immune privilege in the tumor microenvironment [69, 70]. The immune surveillance of pancreatic cancer demonstrates the response to signals from the transformed epithelial pancreatic cell. Cytokines like GM-CSF are secreted by ductal pancreatic cells to modulate the inflammatory tumor environment. Recent work suggests an essential role of NFAT proteins in the transcriptional induction of a core of cytokines associated with encapsulation of the transformed cell from physiological immune response [100, unpublished data]. Thus, NFAT inactivation might represent a promising possibility to restore pancreatic cancer response to tumor suppressive immune signals.

## 11. NFAT mediated TGF $\beta$ switch from tumor suppressor to oncogene in pancreatic carcinogenesis

As mentioned above, an emerging model in cancer biology supports a dual role for TGF $\beta$  signaling in tumorigenesis, acting as a tumor suppressor in early carcinogenesis and as a strong promoter of cell proliferation, migration and invasion in advanced tumor stages [101, 102]. TGF $\beta$  blocks cell proliferation in untransformed cells through the induction of a cell cycle arrest at late G1 phase. Two critical molecular events underlie TGF $\beta$  anti-proliferative response: the transcriptional repression of cMyc and subsequent induction of cell cycle inhibitors like p21 and p15<sup>Ink4b</sup> [102, 103]. As an immediate early transcription factor proto-oncogenic cMyc functions as a master regulator of G1-S-cell cycle progression and growth promotion in pancreatic cancer [93, 103]. cMyc repression by TGF $\beta$  requires the activation of a Smad3-4 complex to transduce its stimulus into the nucleus. Here, Smad proteins complex with the transcription factors E2F4/5 and DP1 and corepressor p107 to repress cMyc promoter via binding to its TGF $\beta$ -inhibitory element (TIE) [104].

During pancreatic carcinogenesis, tumor cells change their transcriptional responsiveness to TGF $\beta$  and become resistant to the growth inhibitory effects due to functional inactivation of the TGF $\beta$ -Smad pathway [103]. Depending on the cell type and the activation status of a cell, TGF $\beta$  then signals through Smad-independent pathways (e.g. PI3K and MAPK pathways) to promote the acquisition of a mesenchymal phenotype and stimulate tumor cell migration [102, 103].

TGF $\beta$  induces expression of NFATc1 and c2, which accumulate in the nucleus and displace pre-existing Smad3 repressor complexes from the cMyc TIE element. Mechanistically, NFATc1 binding to the serum responsive element within the proximal cMyc promoter initiates p300-

dependent histone acetylation rendering the promoter transcriptionally active. Hyperacetylation of the cMyc promoter is required for recruitment of the Ets-like gene 1 (ELK-1), a protein signaling downstream of Kras, responsible for maximal activation of cMyc [94]. The functional significance of this pathway is emphasized by restoration of TGF $\beta$  growth suppressor function in cancer cells and impaired cMyc expression indicated by reduced tumor growth and G1-arrest following the pharmacological or genetic inactivation of NFAT proteins [94, 102].

## 12. NFAT dependent silencing of tumor suppressor genes by formation of heterochromatin complexes

Activation of NFAT proteins does not only lead to target gene activation in pancreatic cancer, but also contributes to gene silencing. Being a member of the Ink4 family, p15<sup>Ink4b</sup> impedes the activation and function of Cyclin dependent kinases (CDK) 4 and 6 which leads to cell cycle inhibition and diminished G1-S phase transition [105]. Therefore, p15<sup>Ink4b</sup> incorporates important functions as a tumor suppressor in numerous malignancies, most importantly in pancreatic cancer, where p15<sup>Ink4b</sup> inactivation by genetic or epigenetic events occurs in over 90% of all tumors [9]. NFATc2 targets p15<sup>Ink4b</sup> for inducible and sequential heterochromatin formation and gene silencing. Sequential Chromatinimmunoprecipitation revealed that NFATc2 binding to its putative binding side on the p15<sup>Ink4b</sup> promoter leads to recruitment of the histone methyltransferase Suv39H1. Local trimethylation of Lysine 9 on histone 3 (H3K9trime) allows docking of heterochromatin protein 1 y (HP1y) which results in stabilization of the heterochromatin complex on the p15<sup>Ink4b</sup> promoter. Conflicting with that, inactivation of NFATc2 disrupts the repressor complex and results in restoration of p15<sup>Ink4b</sup> expression and function [106].

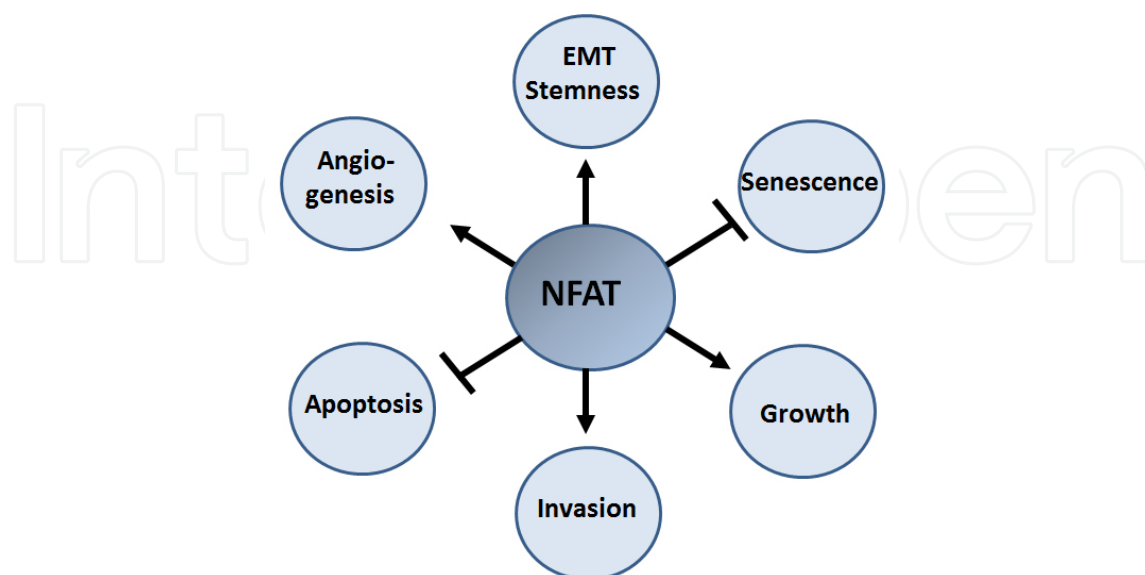


Figure 4. NFAT transcription factors and their impact on hallmarks of cancer

### 13. Perspective

These examples of NFAT dependent alterations in signaling pathways and transcriptional processes promoting pancreatic carcinogenesis only demonstrate a small insight into how oncogenic transcription factors contribute to pancreatic cancer development. Via transduction of EGFR signaling to downstream targets, by cooperation with other pre inflammatory oncogenes, by modulation of the tumor microenvironment, induction of cell cycle promoting genes as well as via silencing of important tumor suppressor genes, NFAT proteins are highly involved in all phases of pancreatic carcinogenesis reaching from early acinar-to-ductal-metaplasia over establishment of precursor lesions to frank invasive pancreatic adenocarcinoma.

As dismal as pancreatic cancer presents itself clinically, as complex and multi-layered are the histopathological and molecular mechanisms responsible for pancreatic carcinogenesis. As the molecular main reason for pancreatic cancer development - the constitutive activation of Kras - evades any pharmacological approach, targeting oncogenic factors like NFAT proteins represents a promising option approaching success in pancreatic cancer treatment.

#### Author details

Elisabeth Heßmann<sup>1</sup>, Sandra Baumgart<sup>2</sup>, Nai ming Chen<sup>1</sup>, Shiv Singh<sup>2</sup>, Garima Singh<sup>2</sup>, Alex König<sup>1</sup>, Albrecht Neeße<sup>1</sup> and Volker Ellenrieder<sup>1</sup>

1 Department of Gastroenterology II, Georg-August-University, Göttingen, Germany

2 Signaling and Transcription Laboratory, Department of Gastroenterology, Philipps University, Marburg, Germany

#### References

- [1] Ottenhof NA, Wilde RF, Maitra A, Hruban RH, Offerhaus GJA. Molecular characteristics of pancreatic ductal adenocarcinoma. *Pathology Research International*. 2011 Article ID: 620601:1-16
- [2] Hidalgo M. Pancreatic cancer. *The New England Journal of Medicine* 2010;362:1605-17
- [3] Maitra A, Kern SE, Hruban RH. Molecular pathogenesis of pancreatic cancer. *Best practice and research: Clinical Gastroenterology* 2005. Vol. 9, No. 9, pp. 1191-1206
- [4] Campbell PJ, Yachida S, Mudie LJ, Stephens PJ, Pleasance ED, Stebbings LA, Morsberger LA, Latimer C, McLaren S, Lin ML, McBride DJ, Varela I, Nik-Zainal SA, Leroy C, Jia M, Menzies A, Butler AP, Teague JW, Griffin CA, Burton J, Swerdlow H,

- Quail MA, Stratton MR, Iacobuzio-Donahue C, Futreal PA. The patterns and dynamics of genomic instability in metastatic pancreatic cancer. *Nature*. 2010 Oct 28;467(7319):1109-13.
- [5] Hruban RH, Takaori K, Klimstra DS, Adsay NV, Albores-Saavedra J, Biankin AV, Biankin SA, Compton C, Fukushima N, Furukawa T, Goggins M, Kato Y, Klöppel G, Longnecker DS, Lüttges J, Maitra A, Offerhaus GJ, Shimizu M, Yonezawa S. An illustrated consensus on the classification of pancreatic intraepithelial neoplasia and intraductal papillary mucinous neoplasms. *American journal of Surgical Pathology*, 2004 Aug;28(8):977-87
- [6] Navas C, Hernandez-Porras I, Schuhmacher AJ, Sibilía M, Guerra C, Barbacid M. EGF receptor signalling is essential for K-ras oncogene-driven Pancreatic Adenocarcinoma. *Cancer Cell* 2012. 22, 318-30
- [7] Hruban RH, Maitra A, Goggins M. Update on Pancreatic Intraepithelial Neoplasia. *International Journal of Clinical and Experimental Pathology* 2007;1:306-16
- [8] Singh M, Maitra A. Precursor lesions of pancreatic cancer: molecular pathology and clinical applications. *Pancreatology* 2007;7(1):9-19
- [9] Jones S, Zhang X, Parsons DW, Lin JC, Leary RJ, Angenendt P, Mankoo P, Carter H, Kamiyama H, Jimeno A, Hong SM, Fu B, Lin MT, Calhoun ES, Kamiyama M, Walter K, Nikolskaya T, Nikolsky Y, Hartigan J, Smith DR, Hidalgo M, Leach SD, Klein AP, Jaffee EM, Goggins M, maitra A, Iacobuzio-Donahue C, Eshleman JR, Kern SE, Hruban RH, Karchin R, Papadopoulos N, Parmigiani G, Vogelstein B, Velculescu VE, Kinzler KW. Cor signaling pathways in human pancreatic cancer revealed by global genomic analyses. *Science* 2008;321(5897):1801-6
- [10] Vikajärvi N, Pääkkö P, Soini Y. Apoptotic index and apoptosis influencing proteins bcl-2, mcl-1, bax and caspases 3, 6 and 8 in pancreatic carcinoma. *Histopathology* 1998;33(5):432-9
- [11] Evans JD, Cornford PA, Dodson A, Greenhalf W, Foster CS, Neoptolemos JP. Detailed tissue expression of bcl-2, bax, bak and bcl-x in the normal human pancreas and in chronic pancreatitis, ampullary and pancreatic ductal adenocarcinomas. *Pancreatology* 2001;1(3):254-62
- [12] Magistrelli P, Coppola R, Tonini G, Vincenzi B, Santini D, Borzomati D, Vecchio F, Valeri S, Castri F, Antinori A, Nuzzo G, Caraglia M, Picciocchi A. Apoptotic index or a combination of Bax/Bcl-2 expression correlate with survival after resection of pancreatic adenocarcinoma. *J Cell Biochem* 2006. 1;97(1): 98-108
- [13] Schutte M, da Costa LT, Hahn SA, Moskaluk C, Hoque AT, Rozenblum E, Weinstein CL, Bittner M, Meltzer PS, Trent JM, et al. Identification by representational difference analysis of a homozygous deletion in pancreatic carcinoma that lies within the BRCA2 region. *Proc Natl Acad Sci USA* 1995.20;92(13):5950-4



- [14] Goggins M, Schutte M, Lu J, Moskaluk CA, Weinstein CL, Petersen GM, Yeo CJ, Jackson CE, Lynch HT, Hruban RH, Kern SE. Germline BRCA2 gene mutations in patients with apparently sporadic pancreatic carcinomas. *Cancer Res* 1996. 1;56(23):5360-4
- [15] Yamamoto H, Itoh F, Nakamura H, Fukushima H, Sasaki S, Perucho M, Imai K. Genetic and clinical features of human pancreatic ductal adenocarcinomas with widespread microsatellite instability. *Cancer Res*. 2001. 1;61(7):3139-44
- [16] Redston MS, Caldas C, Seymour AB, Hruban RH, da Costa L, Yeo CJ, Kern SE. p53 mutations in pancreatic carcinoma and evidence of common involvement of homopolymer tracts in DNA microdeletions. *Cancer Res*. 1994 Jun 1;54(11):3025-33.
- [17] Barton CM, Staddon SL, Hughes CM, Hall PA, O'Sullivan C, Klöppel G, Theis B, Russell RC, Neoptolemos J, Williamson RC, et al. Abnormalities of the p53 tumour suppressor gene in human pancreatic cancer. *Br J Cancer*. 1991 Dec;64(6):1076-82.
- [18] Joo YE, Rew JS, Park CS, Kim SJ. Expression of E-cadherin, alpha- and beta-catenins in patients with pancreatic adenocarcinoma. *Pancreatology*. 2002;2(2):129-37.
- [19] Li YJ, Ji XR. Relationship between expression of E-cadherin-catenin complex and clinicopathologic characteristics of pancreatic cancer. *World J Gastroenterol*. 2003 Feb;9(2):368-72.
- [20] Shi Y, Massagué J. Mechanisms of TGF-beta signaling from cell membrane to the nucleus. *Cell*. 2003 Jun 13;113(6):685-700.
- [21] Ardito CM, Grüner BM, Takeuchi KK, Lubeseder-Martellato C, Teichmann N, Mazur PK, Delgiorno KE, Carpenter ES, Halbrook CJ, Hall JC, Pal D, Briel T, Herner A, Trajkovic-Arsic M, Sipos B, Liou GY, Storz P, Murray NR, Threadgill DW, Sibia M, Washington MK, Wilson CL, Schmid RM, Raines EW, Crawford HC, Siveke JT. EGF receptor is required for KRAS-induced pancreatic tumorigenesis. *Cancer Cell*. 2012 Sep 11;22(3):304-17. doi: 10.1016/j.ccr.2012.07.024.
- [22] Vaccaro V, Bria E, Sperduti I, Gelibter A, Moscetti L, Mansueto G, Ruggeri EM, Gammucci T, Cognetti F, Milella M. First-line erlotinib and fixed dose-rate gemcitabine for advanced pancreatic cancer. *World J Gastroenterol*. 2013 Jul 28;19(28):4511-9. doi: 10.3748/wjg.v19.i28.4511.
- [23] Mullendore ME, Koorstra JB, Li YM, Offerhaus GJ, Fan X, Henderson CM, Matsui W, Eberhart CG, Maitra A, Feldmann G. Ligand-dependent Notch signaling is involved in tumor initiation and tumor maintenance in pancreatic cancer. *Clin Cancer Res*. 2009 Apr 1;15(7):2291-301. doi: 10.1158/1078-0432.CCR-08-2004. Epub 2009 Mar 3.
- [24] Ma J, Xia J, Miele L, Sarkar FH, Wang Z. Notch signaling pathway in pancreatic cancer progression. *Pancreat Disord Ther*. 2013. 3(114): 1-5

- [25] Wang Z, Li Y, Kong D, Sarkar FH. The role of Notch signaling pathway in epithelial-mesenchymal transition (EMT) during development and tumor aggressiveness. *Curr Drug Targets*. 2010. 11:745-51
- [26] Gnoni A, Licchetta A, Scarpa A, Azzariti A, Brunetti AE, Simone G, Nardulli P, Santini D, Aieta M, Delcuratolo S, Silvestris N. Carcinogenesis of pancreatic adenocarcinoma: precursor lesions. *Int J Mol Sci*. 2013 Sep 30;14(10):19731-62.
- [27] Rosow DE, Liss AS, Strobel O, Fritz S, Bausch D, Valsangkar NP, Alsina J, Kulemann B, Park JK, Yamaguchi J, LaFemina J, Thayer SP. Sonic Hedgehog in pancreatic cancer: from bench to bedside, then back to the bench. *Surgery*. 2012 Sep;152(3 Suppl 1):S19-32. Epub 2012 Jul 6.
- [28] Aubin J, Déry U, Lemieux M, Chailier P, Jeannotte L. Stomach regional specification requires Hoxa5-driven mesenchymal-epithelial signaling. *Development*. 2002 Sep; 129(17):4075-87.
- [29] Fendrich V, Esni F, Garay MV, Feldmann G, Habbe N, Jensen JN, Dor Y, Stoffers D, Jensen J, Leach SD, Maitra A. Hedgehog signaling is required for effective regeneration of exocrine pancreas. *Gastroenterology*. 2008 Aug;135(2):621-31.
- [30] Kayed H, Kleeff J, Keleg S, Büchler MW, Friess H. Distribution of Indian hedgehog and its receptors patched and smoothed in human chronic pancreatitis. *J Endocrinol*. 2003 Sep;178(3):467-78.
- [31] Thayer SP, di Magliano MP, Heiser PW, Nielsen CM, Roberts DJ, Lauwers GY, Qi YP, Gysin S, Fernández-del Castillo C, Yajnik V, Antoniu B, McMahon M, Warshaw AL, Hebrok M. Hedgehog is an early and late mediator of pancreatic cancer tumorigenesis. *Nature*. 2003 Oct 23;425(6960):851-6.
- [32] Sato N, Goggins M. The role of epigenetic alterations in pancreatic cancer. *J Hepatobiliary Pancreat Surg*. 2006;13:382-95
- [33] Esteller M. Epigenetic gene silencing in cancer: the DNA hypermethylation. *Hum. Mol Genet*. 2007;16:R50-9
- [34] Eden A, Gaudet F, Waghmare A, Jaenisch R. Chromosomal instability and tumors promoted by DNA hypomethylation. *Science* 2003;300:455
- [35] Tufarelli C, Stanley JA, Garrick D, Sharpe JA, Ayyub H, Wood WG, Higgs DR. Transcription of antisense RNA leading to gene silencing and methylation as a novel cause of human genetic disease. *Nat Genet* 2003;34:157-65
- [36] Fabbri M, Garzon R, Cimmino A, Liu Z, Zanesi N, Callegari E, Liu S, Adler H, Costi-  
nean S, Fernandez-Cymering C, Volinia S, Guler G, Morrison CD, Chan KK, Marcucci G, Calin GA, Huebner K, Croce CM. MicroRNA-29 family reverts aberrant methylation in lung cancer by targeting DNA-methyltransferases 3A and 3B. *Proc Natl Acad Sci USA* 2007;104:15805-10

- [37] Yamada N, Nishida Y, Tsutsumida H, Hamada T, Goto M, Higashi M, Nomoto M, Yonezawa S. Muc1 expression is regulated by DNA methylation and histone H3 lysine 9 modification in cancer cells. *Cancer Res* 2008;68:2708-16
- [38] Vincent A, Ducourouble MP, van Seuning I. Epigenetic regulation of the human mucin gene Muc4 in epithelial cancer cell lines involves both DNA methylation and histone modifications mediated by DNA methyltransferases and histone deacetylases. *Faseb J* 2008;22:3035-45
- [39] Zagni C, Chiacchio U, Rescifina A. Histone methyltransferase inhibitors: novel epigenetic agents for cancer treatment. *Curr Med Chem* 2013; 20:167-85
- [40] Lorincz AT. The promise and the Problem of Epigenetics Biomarkers in Cancer. *Expert Opin Med Diagn.* 2011; 5 (5): 375-79
- [41] Lujambio A, Calin GA, Villanueva A, Ropero S, Sanchez-Cespedes M, Blanco D, Montuenga LM, Rossis S, Nicoloso MS, Faller WJ, Gallagher WM, Eccles SA, Croce CM, Esteller M. A microRNA DNA methylation signature for human cancer metastasis. *Proc Natl Acad Sci USA.* 2008;105:13556-61
- [42] Berger SL. Histone modifications in transcriptional regulation. *Curr Opin Genet Dev.* 2002;12:142-148
- [43] Lopez-Serra L, Esteller M. Proteins that bind methylated DNA and human cancer: reading the wrong words. *Br J Cancer* 2008; 12:1881-5
- [44] Sato N, Fukushima N, Hruban RH, Goggins M. CpG island methylation profile of pancreatic intraepithelial neoplasia. *Mod Pathol.* 2008 Mar;21(3):238-44. Epub 2007 Dec 21.
- [45] Schutte M, Hruban RH, Geradts J, Maynard R, Hilgers W, Rabindran SK, Moskaluk CA, Hahn SA, Schwarte-Waldhoff I, Schmiegel W, Baylin SB, Kern SE, Herman JG. Abrogation of the Rb/p16 tumor-suppressive pathway in virtually all pancreatic carcinomas. *Cancer Res.* 1997 Aug 1;57(15):3126-30.
- [46] Jenuwein T, Allis CD. Translating the histone code. *Science* 2001;293:1074-80
- [47] Lachner M, Jenuwein T. The many faces of histone lysine methylation. *Curr Opin Cell Biol.* 2002;14:286-98
- [48] Czermin B, Melfi R, McCabe D, Seitz V, Imhof A, Pirrotta V. Drosophila Enhancer of zeste/ESC complexes have a histone H3 methyltransferase activity that marks chromosomal Polycomb sites. *Cell* 2002. 111(2):185-96
- [49] Shao Z, Raible F, Mollaaghababa R, Guyon JR, Wu CT, Bender W, Kingston RE. Stabilization of chromatin structure by PRC1, a Polycomb complex. *Cell.* 1999;98(1)37-46
- [50] Lee TI, Jenner RG, Boyer LA, Guenther MG, Levine SS, Kumar RM, Chevalier B, Johnstone SE, Cole MF, Isono K, Koseki H, Fuchikami T, Abe K, Murray HL, Zucker JP, Yuan B, Bell GW, Herbolsheimer E, Hannett NM, Sun K, Odom DT, Otte AP, Vol-

- kert TL, Bartel DP, Melton DA, Gifford DK, Jaenisch R, Young RA. Control of developmental regulators by Polycomb in human embryonic stem cells. *Cell*. 2006;125(2):301-13
- [51] Molovsky AV, Pardal R, Iwashita T, Park IK, Clarke MF, Morrison SF. Bmi-1 dependence distinguishes neural stem cell self-renewal from progenitor proliferation. *Nature*. 2003;425(6961):962-7
- [52] Saeki M, Kobayashi D, Tsuji N, Kuribayashi K, Watanabe N. Diagnostic importance of overexpression of Bmi-1 mRNA in early breast cancers. *Int J Incol*. 2009;35(3):511-5
- [53] Qin ZK, Yang JA, Ye YL, Zhang X, Xu LH, Zhou FJ, Han H, Liu ZW, Song LB, Zeng MS. Expression of BMI-1 is a prognostic marker in bladder cancer. *BMC Cancer*. 2009;9:61
- [54] Xu K, Wu ZJ, Groner AC, He HH, Cai C, Lis RT, WU X, Stack EC, Loda M, Liu T, Xu H, Cato L, Thornton JE, Gregory RI, Morrissey C, Vessella RL, Montironi R, Magi-Galluzzi C, Kantoff PW, Balk SP, Liu XS, Brown M. EZH2 oncogenic activity in castration-resistant prostate cancer cells is Polycomb-independent. *Science*. 2012;338(6113):1465-9
- [55] Tonini T, Bagella L, D'Andrilli G, Claudio PP, Giodano A. Ezh2 reduces the ability of HDAC1-dependence pRb2/p130 transcriptional repression of cyclin A. *Oncogene*. 2004;23(28):4930-7
- [56] Lu C, Han HD, Mangala LS, Ali-Fehmi R, Newton CS, Ozbun L, Armaiz-Pena GN, Hu W, Stone RL, Munkarah A, Ravoori MK, Shahzad MM, Lee JW, Mora E, Langley RR, Carroll AR, Matsuo K, Spannuth WA, Schmandt R, Jennings NB, Goodman BW, Jaffe RB, Nick AM, Kim HS, Guven EO, Chen YH, Li LY, Hsu MC, Coleman RL, Calin GA, Denkbass EB, Lim JY, Lee JS, Kundra V, Birrer MJ, Hung MC, Lopez-Berestein G, Sood AK. Regulation of tumor angiogenesis by EZH2. *Cancer Cell*. 2010;18(2):185-97
- [57] Zeidler M, Kleer CG. The polycomb protein Enhancer of Zeste 2: its link to DNA repair and breast cancer. *J Mol Histol*. 2006;37(5-7):219-23
- [58] Cao Q, Yu J, Dhanasekaran SM, Kim JH, Mani RS, Tomlins SA, Mehra R, Laxman B, Cao X, Yu J, Kleer CG, Varambally S, Chinnaiyan AM. Repression of E-cadherin by the polycomb group protein EZH2 in cancer. *Oncogene*. 2008;27(58):7274-84
- [59] Ougolkov AV, Bilim VN, Billadeau DD. Regulation of pancreatic tumor cell proliferation and chemoresistance by the histone methyltransferase enhancer of zeste homologue 2. *Clin Cancer Res*. 2008;14(21):6790-6
- [60] Winter JM, Ting AH, Vilardell F, Gallmeier E, Baylin SB, Hruban RH, Kern SE, Iacobuzio-Donahue CA. Absence of E-cadherin expression distinguishes noncohesive from cohesive pancreatic cancer. *Clin Cancer Res*. 2008;14(2):412-8
- [61] McCleary-Wheeler AL, Lomberk GA, Weiss FU, Schneider G, Fabbri M, Poshusta TL, Dusetti NJ, Baumgart S, Iovanna JL, Ellenrieder V, Urrutia R, Fernandez-Zapico ME.

- Insights into the epigenetic mechanisms controlling pancreatic carcinogenesis. *Cancer Lett.* 2013;328(2):212-21.
- [62] Szafranska AE, Davison TS, John J, Cannon T, Sipos B, Maghnouj A, Labourier E, Hahn SA. MicroRNA expression alterations are linked to tumorigenesis and non-neoplastic processes in pancreatic ductal adenocarcinoma. *Oncogene.* 2007 Jun 28;26(30):4442-52.
- [63] Lee EJ, Gusev Y, Jiang J, Nuovo GJ, Lerner MR, Frankel WL, Morgan DL, Postier RG, Brackett DJ, Schmittgen TD. Expression profiling identifies microRNA signature in pancreatic cancer. *Int J Cancer.* 2007 Mar 1;120(5):1046-54.
- [64] Burk U, Schubert J, Wellner U, Schmalhofer O, Vincan E, Spaderna S, Brabletz T. A reciprocal repression between ZEB1 and members of the miR-200 family promotes EMT and invasion in cancer cells. *EMBO Rep.* 2008 Jun;9(6):582-9.
- [65] Chang TC, Wentzel EA, Kent OA, Ramachandran K, Mullendore M, Lee KH, Feldmann G, Yamakuchi M, Ferlito M, Lowenstein CJ, Arking DE, Beer MA, Maitra A, Mendell JT. Transactivation of miR-34a by p53 broadly influences gene expression and promotes apoptosis. *Mol Cell.* 2007 Jun 8;26(5):745-52.
- [66] Malumbres M, Barbacid M. RAS oncogenes: the first 30 years. *Nat Rev Cancer.* 2003 Jun;3(6):459-65.
- [67] Downward J. Targeting RAS signalling pathways in cancer therapy. *Nat Rev Cancer.* 2003 Jan;3(1):11-22. Review.
- [68] Maitra A, Hruban RH. Pancreatic cancer. *Annu Rev Pathol.* 2008;3:157-88
- [69] Pylayeva-Gupta Y, Lee KE, Hajdu CH, Miller G, Bar-Sagi D. Oncogenic Kras-induced GM-CSF production promotes the development of pancreatic neoplasia. *Cancer Cell* 2012;21(6):836-47
- [70] Bayne LJ, Beatty GL, Jhala N, Clark CE, Rhim AD, Stanger BZ, Vonderheide RH. Tumor-derived granulocyte-macrophage colony-stimulating factor regulates myeloid inflammation and T cell immunity in pancreatic cancer. *Cancer Cell.* 2012 Jun 12;21(6):822-35.
- [71] Hingorani SR, Petricoin EF, Maitra A, Rajapakse V, King C, Jacobetz MA, Ross S, Conrads TP, Veenstra TD, Hitt BA, Kawaguchi Y, Johann D, Liotta LA, Crawford HC, Putt ME, Jacks T, Wright CV, Hruban RH, Lowy AM, Tuveson DA. Preinvasive and invasive ductal pancreatic cancer and its early detection in the mouse. *Cancer Cell.* 2003 Dec;4(6):437-50.
- [72] Larsson LG. Cellular senescence--a barrier against tumor development? *Semin Cancer Biol.* 2011 Dec;21(6):347-8.
- [73] Blackburn EH. Telomeres: no end in sight. *Cell.* 1994 Jun 3;77(5):621-3.



- [74] Singh S, Ellenrieder V. Senescence in pancreatic carcinogenesis: from signalling to chromatin remodelling and epigenetics. *Gut* 2013;62:1364-72
- [75] DeNicola GM, Tuveson DA. RAS in cellular transformation and senescence. *Eur J Cancer*. 2009 Sep;45 Suppl 1:211-6
- [76] Collado M, Gil J, Efeyan A, Guerra C, Schuhmacher AJ, Barradas M, Benguría A, Zaballos A, Flores JM, Barbacid M, Beach D, Serrano M. Tumour biology: senescence in premalignant tumours. *Nature*. 2005 Aug 4;436(7051):642.
- [77] Collado M, Serrano M. Senescence in tumours: evidence from mice and humans. *Nat Rev Cancer*. 2010 Jan;10(1):51-7.
- [78] Vogelstein B, Lane D, Levine AJ. Surfing the p53 network. *Nature*. 2000 Nov 16;408(6810):307-10.
- [79] Coqueret O. New roles for p21 and p27 cell-cycle inhibitors: a function for each cell compartment? *Trends Cell Biol*. 2003 Feb;13(2):65-70.
- [80] Stiewe T. The p53 family in differentiation and tumorigenesis. *Nat Rev Cancer*. 2007 Mar;7(3):165-8.
- [81] Hingorani SR, Wang L, Mutani AS, Combs C, Deramaudt TB, Hruban RH, Rustgi AK, Chang S, Tuveson DA. TRP53R172H and KrasG12D cooperate to promote chromosomal instability and widely metastatic pancreatic ductal adenocarcinoma in mice. *Cancer Cell*. 2005; 7(5):469-83
- [82] Rozenblum E, Schutte M, Goggins M, Hahn SA, Panzer S, Zahurak M, Goodman SN, Sohn TA, Hruban RH, Yeo CJ, Kern SE. Tumor-suppressive pathways in pancreatic carcinoma. *Cancer Res*. 1997 May 1;57(9):1731-4.
- [83] Yadav D, Lowenfels AB. The epidemiology of pancreatitis and pancreatic cancer. *Gastroenterology*. 2013;144(6):1252-61
- [84] Guerra C, Collado M, Navas C, Schuhmacher AJ, Hernández-Porras I, Cañamero M, Rodríguez-Justo M, Serrano M, Barbacid M. Pancreatitis-induced inflammation contributes to pancreatic cancer by inhibiting oncogene-induced senescence. *Cancer Cell*. 2011 Jun 14;19(6):728-39.
- [85] Buchholz M, Ellenrieder V. An emerging role for Ca<sup>2+</sup>/calcineurin/NFAT signaling in cancerogenesis. *Cell Cycle*. 2007;6(1):16-19
- [86] Mancini M, Toker A. NFAT proteins: emerging roles in cancer progression. *Nat Rev Cancer*. 2009 Nov;9(11):810-20.
- [87] Hogan PG, Chen L, Nardone J, Rao A. Transcriptional regulation by calcium, calcineurin, and NFAT. *Genes & Development* 2003. 17:2205-32
- [88] Singh SK, Baumgart S, Singh G, König AO, Reutlinger K, Hofbauer LC, Barth P, Gress TM, Lomberk G, Urrutia R, Fernandez-Zapico ME, Ellenrieder V. Disruption

- of a nuclear NFATc2 protein stabilization loop confers breast and pancreatic cancer growth suppression by zoledronic acid. *J Biol Chem*. 2011 Aug 19;286(33):28761-71.
- [89] Baumgart S, Ellenrieder V, Fernandez-Zapico ME. Oncogenic transcription factors: cornerstones of inflammation-linked pancreatic carcinogenesis. *Gut*. 2013 Feb;62(2):310-6.
- [90] König A, Fernandez-Zapico ME, Ellenrieder V. Primers on molecular pathways--the NFAT transcription pathway in pancreatic cancer. *Pancreatology*. 2010;10(4):416-22.
- [91] Diehl S, Chow CW, Weiss L, Palmethofer A, Twardzik T, Rounds L, Serfling E, Davis RJ, Anguita J, Rincon M. Induction of NFATc2 expression by interleukin 6 promotes T helper type 2 differentiation. *J. Exp. Med*. 2002;196(1):39-49
- [92] Neal JW, Clipstone NA. A constitutively active NFATc1 mutant induces a transformed phenotype in 3T3-L1 fibroblasts. *J Biol Chem*. 2003 May 9;278(19):17246-54.
- [93] Buchholz M, Schatz A, Wagner M, Michl P, Linhart T, Adler G, Gress TM, Ellenrieder V. Overexpression of c-myc in pancreatic cancer caused by ectopic activation of NFATc1 and the Ca<sup>2+</sup>/calcineurin signaling pathway. *EMBO J*. 2006;25(15):3714-24
- [94] König A, Linhart T, Schlengelmann K, Reutlinger K, Wegele J, Adler G, Singh G, Hofmann L, Kunsch S, Büch T, Schäfer E, Gress TM, Fernandez-Zapico ME, Ellenrieder V. NFAT-induced Histone Acetylation Relay Switch promotes c-Myc-dependent growth in Pancreatic Cancer Cells. *Gastroenterology*. 2010;138:1189-99
- [95] Jauliac S, López-Rodriguez C, Shaw LM, Brown LF, Rao A, Toker A. The role of NFAT transcription factors in integrin-mediated carcinoma invasion. *Nat Cell Biol*. 2002 Jul;4(7):540-4.
- [96] Duque J, Fresno M, Iñiguez MA. Expression and function of the nuclear factor of activated T cells in colon carcinoma cells: involvement in the regulation of cyclooxygenase-2. *J Biol Chem*. 2005 Mar 11;280(10):8686-93.
- [97] Shi A, DiRenzo D, Qu C, Barney D, Miley D, Konieczny SF. Maintenance of acinar cell organization is critical to preventing Kras-induced acinar-ductal metaplasia. *Oncogene* 2013. 32, 1950-8
- [98] Shi C, Hong SM, Lim P, Kamiyama H, Khan M, Anders RA, Goggins M, Hruban RH, Eshleman JR. KRAS2 mutations in human pancreatic acinar-ductal metaplastic lesions are limited to those with PanIN: implications for the human pancreatic cancer cell of origin. *Mol Cancer Res*. 2009 Feb;7(2):230-6
- [99] Huang C, Yang G, Jiang T, Cao J, Huang KJ, Qiu ZJ. Down-regulation of STAT3 expression by vector-based small interfering RNA inhibits pancreatic cancer growth. *World J Gastroenterol*. 2011 Jul 7;17(25):2992-3001.
- [100] Shang C, Attema J, Cakouros D, Cockerill PN, Shannon MF. Nuclear factor of activated T cells contributes to the function of the CD28 response region of the granulocyte

macrophage-colony stimulating factor promoter. *Int Immunol.* 1999 Dec;11(12):1945-56.

- [101] Ellenrieder V, Fernandez Zapico ME, Urrutia R. TGFbeta-mediated signaling and transcriptional regulation in pancreatic development and cancer. *Curr Opin Gastroenterol.* 2001 Sep;17(5):434-40.
- [102] Fernandez-Zapico ME, Ellenrieder V. NFAT transcription factors, the potion mediating "Dr. Jekyll-Mr. Hyde" transformation of the TGFβ pathway in cancer cells. *Cell Cycle.* 2010 Oct 1;9(19):3838-9.
- [103] Singh G, Singh SK, König A, Reutlinger K, Nye MD, Adhikary T, Eilers M, Gress TM, Fernandez-Zapico ME, Ellenrieder V. Sequential activation of NFAT and c-Myc transcription factors mediates the TGF-beta switch from a suppressor to a promoter of cancer cell proliferation. *J Biol Chem.* 2010 Aug 27;285(35):27241-50
- [104] Ellenrieder V. TGFbeta regulated gene expression by Smads and Sp1/KLF-like transcription factors in cancer. *Anticancer Res.* 2008 May-Jun;28(3A):1531-9
- [105] Gil J, Peters G. Regulation of the In4b-ARF-Ink4a tumour suppressor locus: all for one and one for all. *Nature Reviews.* 2006;7:667-77
- [106] Baumgart S, Glesel E, Singh G, Chen NM, Reutlinger K, Zhang J, Billadeau DD, Fernandez-Zapico ME, Gress TM, Singh SK, Ellenrieder V. Restricted Heterochromatin Formation links NFATc2 repressor activity with Growth promotion in Pancreatic Cancer. *Gastroenterology.* 2012;142:388-98

IntechOpen

