

We are IntechOpen, the world's leading publisher of Open Access books Built by scientists, for scientists

4,800

Open access books available

122,000

International authors and editors

135M

Downloads

Our authors are among the

154

Countries delivered to

TOP 1%

most cited scientists

12.2%

Contributors from top 500 universities



WEB OF SCIENCE™

Selection of our books indexed in the Book Citation Index
in Web of Science™ Core Collection (BKCI)

Interested in publishing with us?
Contact book.department@intechopen.com

Numbers displayed above are based on latest data collected.
For more information visit www.intechopen.com



Earth Rotation – Basic Theory and Features

Sung-Ho Na

Additional information is available at the end of the chapter

<http://dx.doi.org/10.5772/54584>

1. Introduction

Earth rotation is, in most case, meant to be spin rotation of the Earth. Diverse seasonal variations are the result of Earth's obliquity to the ecliptic and orbital rotation of the Earth around the Sun. Although the linear motion of Earth's orbital rotation is faster than that of Earth's spin rotation, human beings cannot easily recognize it except aberration, which was first noticed by Bradley. In the Renaissance and also ancient times, scholars comprehended that orderly movements of stars in night sky are due to the Earth's spin rotation. To them, the planets, Moon and Sun moved with different periodicities in complicated way on the celestial sphere. As a matter of fact, the Earth's orbital/spin rotations are quite stable, and their stabilities far exceed human perception and most man-made instruments. However, the variations in both angular speed and direction of Earth spin have become detectable as technologies improved. Earth rotation is one of the most interesting scientific phenomena ever known. Moreover the importance of accurate knowledge of Earth rotation cannot be overestimated, because both the spatial and time systems of human civilization are referenced to the Earth and its spin rotational state.

Precession of equinox has been known since early day astronomy. The period of Earth's precession is about 26 thousand years. Nutation, which is periodic perturbation of the Earth's spin axis, is much smaller in amplitude than precession and often regarded as associated motion of precession. While precession and nutation are the motions of the Earth's spin axis (angular momentum) viewed by an observer in space outside of the Earth, the pole of Earth's spin rotation also changes with respect to observer on the Earth. Nowadays the Earth's rotational pole is usually represented by the Celestial Intermediate Pole (CIP). Slow drift of the Earth's pole in a time scale of thousand years is called polar wander. The polar wander is mostly due to the glacial isostatic adjustment and slow internal processes in the Earth. The pole of Earth's reference ellipsoid coincides with the Reference Pole, which was determined as average position of the Earth's pole between 1900 and 1905 (formerly called the Conventional International Origin). Pole position (CIP) with respect to the Reference Pole is represented by rectangular coordinates (x_p, y_p) , which slowly draws a rough circle on the Earth's surface in a year or so. This pole offset is termed as polar motion.

Not only the orientation of the Earth's spin rotation but also its speed is slightly variable. Before the advent of quartz clocks, rotation of the Earth was regarded as the most reliable clock except planetary motion. Periodic variations in the length of day (LOD) have been found since the observations of star transit across meridian with accuracy better than 1 millisecond in the 1950s. Annual, semi-annual, and fortnightly perturbations are the first ones identified in the LOD variation. The Universal Time (UT), which is based on Earth rotation has been replaced by the Coordinated Universal Time (UTC) or the International Atomic Time (TAI), which are based on atomic clocks. Secular deceleration of the Earth due to tidal friction has been presumed since G. Darwin, and was confirmed later on.

Space geodetic technology since 1980s greatly enhanced precision and accuracy of measuring Earth rotation. Very Long Baseline Interferometry (VLBI) on the electromagnetic waves, which were emitted from quasar and detected at stations on Earth, has provided most important dataset, particularly for UT variation. VLBI and others as Global Positioning System (GPS), Satellite Laser Ranging (SLR) are capable of measuring pole offset with precision better than 1 milliarcsec as subdaily basis. Recently Ring Laser Gyroscope emerged as a unique and promising instrument to measure directly the Earth's spin rotational angular velocity with unprecedented accuracy.

Any position on the Earth's surface is usually denoted by its latitude and longitude in the Terrestrial Reference Frame (TRF), while direction to an astronomical object can be conveniently represented by its right ascension and declination in the Celestial Reference Frame (CRF). Transformation between TRF and CRF is attained with the necessary information; Earth rotation angle due to time passage from a certain epoch and small changes in orientation due to precession-nutation and polar motion.

In this chapter, characteristics of aforementioned variations in the Earth's rotation are compiled. Explanation of theoretical principle and observational features for each aspects are given one by one. But at times of much elaboration, more thorough treatment is avoided and proper references are recommended instead. The pre-requisite mechanics and mathematics are summarized in Appendix, where elementary vector algebra, harmonic oscillator, and basics for rotational mechanics *etc.* are covered. Old but still worth-reading monographs about Earth rotation are Munk and Macdonald [1], Lambeck [2], and Moritz and Mueller [3]. Explanations on terms and concepts of Earth rotation can be found in Seidelmann [4]. Extensive description about recent developments of Earth rotation study with emphasis on wobble and LOD was given by Gross [5]. In the same volume, Dehant and Mathews gave summary of Earth rotation theories with emphasis on nutation [6]. A technical note of International Earth Rotation and Reference Systems Service; IERS Conventions 2010 gives descriptions of new definitions in Earth rotation [7].

2. Precession and nutation

Precession of equinox has been noticed by careful observers since early days. Earth's spin rotational pole and vernal/autumnal equinoxes slowly change their positions on the celestial

sphere. Like any other gyroscopic motions, the equation of motion for precession of the Earth can be simply expressed as follows.

$$\frac{d\vec{L}}{dt} = \vec{\tau} \quad (1)$$

Precessional torque comes mainly from the Moon and Sun; their gravitational pull to the Earth's equatorial bulge. But planets in the solar system also affect and contribute to the precession of the Earth in small amount. Earth's precession caused by all those effects together is called general precession, while luni-solar precession is referred to that caused by the Moon and Sun only. Recently it has been recognized that planetary perturbations lead to minute change in Earth's orbital plane, *i.e.* ecliptic. It is now recommended to use terms as precession of equator and precession of ecliptic [7]. Compared with the angular speed of the Earth's precession, lunar orbital rotation and apparent solar annual rotation around the Earth are much faster (similar comparison holds for the 18.6 years lunar orbital precession). Therefore, the luni-solar precessional torque can be evaluated by treating the masses of the Moon and Sun as hula-hoop shaped distribution (Figure 1).

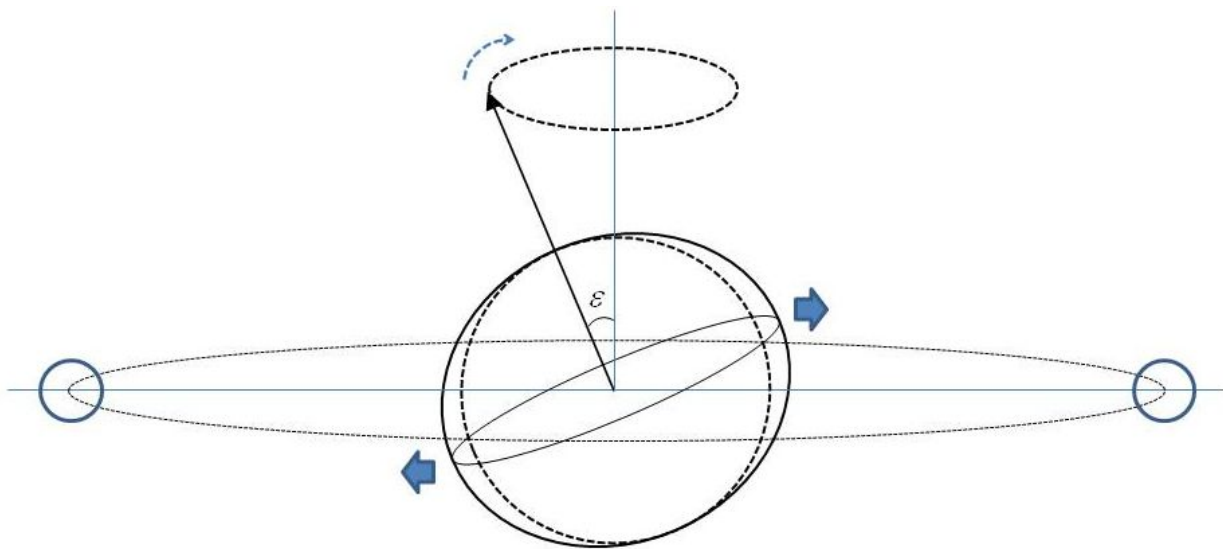


Figure 1. Due to the Earth's equatorial bulge, the Moon and Sun exert torque to Earth's spin rotation. The resulting slow precession is clockwise viewed from above the pole of ecliptic.

In fact, the precessional torque is exerted by differential gravitational force (= tidal force) on the Earth's equatorial bulge. Qualitative understanding may be directly acquired from Figure 1. If one considers both directions of the Earth's spin angular momentum \vec{L} (solid arrow in the Figure) and the time averaged solar precessional torque $\vec{\tau}$ (the direction of the torque is perpendicular and into the paper), then, according to Equation; $\Delta\vec{L} = \vec{\tau} \Delta t$, the small change $\Delta\vec{L}$ of \vec{L} in time increment Δt should be $\vec{\tau} \Delta t$. Average solar torque for the Earth's precession can be written as

$$\tau_s = \frac{3GM_s}{2r_s^3}(C - A)\sin \varepsilon \cos \varepsilon \quad (2)$$

where G , M_s , r_s , and ε are the constant of gravitation, mass of the Sun, mean solar distance, and the Earth's obliquity angle to the ecliptic plane. C and A are the principal moments of inertia of the Earth. Average lunar torque can be written similarly. Since the magnitude of Earth's spin angular momentum is $L = C\omega_0$, and the precession locus is shortened by a factor of $\sin \varepsilon$, the total angular speed of the Earth's precession due to both of the lunar and solar torques is given as the following.

$$\omega_{L.S.} = \frac{3G}{2\omega_E} \frac{C - A}{C} \left(\frac{M_m}{r_m^3} + \frac{M_s}{r_s^3} \right) \cos \varepsilon \quad (3)$$

Derivation of Equations 2-3 can be found in [8-10], or other equivalent material. The angular velocity of general precession was recently found as $\omega_{G.P.} = 50.287946'' / yr$.

Due to its precession, orientation of the Earth's spin axis ceaselessly changes in the celestial sphere. This change can be represented by the three angles ζ , θ , and z as illustrated in Figure 2. The transformation matrix corresponding to three successive rotations with these angles is represented as $R_{prec} = R_3(-z)R_2(\theta)R_3(-\zeta)$. Followings are the three angles of IAU2000A in terms of T , which is the time of given epoch in Julian century since J2000.0 - Greenwich noon on January 1st of year 2000 [11].

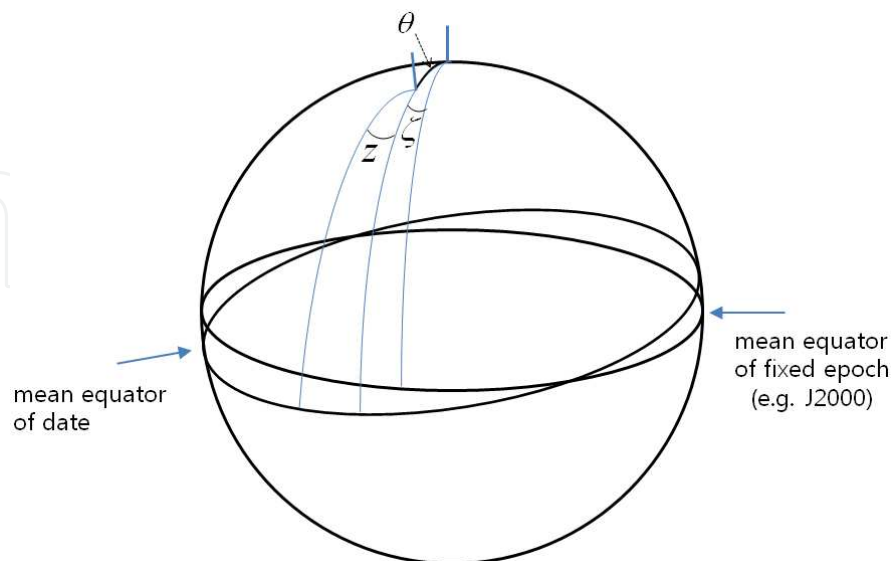


Figure 2. Representation of the Earth's precession by three angles ζ , θ , and z . The associated coordinate transformation matrix is given as $R_3(-z)R_2(\theta)R_3(-\zeta)$.

$$\begin{aligned}
 \zeta &= 2.5976176'' + 2306.0809506'' T + 0.3019015'' T^2 + 0.0179663'' T^3 - 0.0000327'' T^4 - 0.0000002'' T^5 \\
 \theta &= 2004.1917476'' T - 0.4269353'' T^2 - 0.0418251'' T^3 - 0.0000601'' T^4 - 0.0000001'' T^5 \\
 z &= -2.5976176'' + 2306.0803226'' T + 1.0947790'' T^2 + 0.0182273'' T^3 + 0.0000470'' T^4 - 0.0000003'' T^5
 \end{aligned}
 \tag{4}$$

Change in the right ascension and declination of any fixed position on the celestial sphere can readily be acquired with known precession matrix.

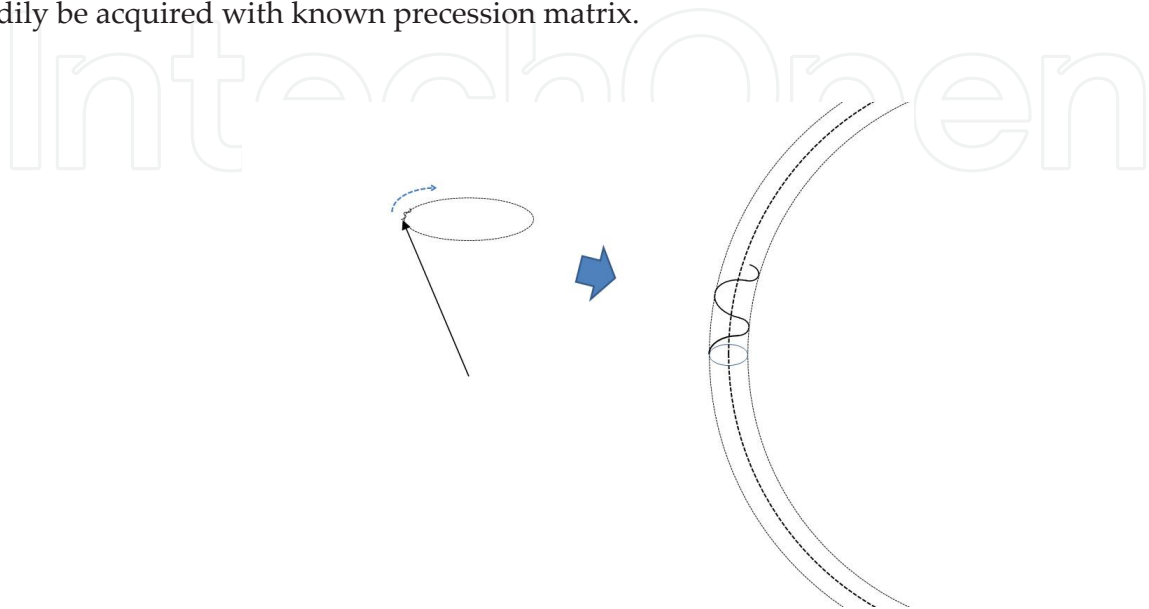


Figure 3. Schematic illustration of 18.6 year nutation superposed on the precession of the Earth. The locus of angular momentum vector of the Earth during about one and half nutation period is drawn, which is enlarged on the right.

Besides precession, there exist small periodic oscillations superposed on it, and these are called nutations. The cause of nutation is the luni-solar gravitational pull to Earth's equatorial bulge, same as for precession but only with different frequency. In Figure 3, the main nutation (18.6 year period) is illustrated as a superposition on the precession. There are numerous different periodic components in the Earth's nutation. Treating the lunar and solar masses as circularly distributed rings was only an approximation to consider precession, but the true motions of the Moon and Sun relative to the Earth definitely are periodic. Accordingly effect of the periodic lunar or solar torque exist as oscillatory perturbations, *i.e.*, nutations. Like the response of a simple harmonic oscillator to periodic driving force (away from resonance), which is proportional to inverse square of the driving frequency, amplitude of longer period nutation should be larger.

The nutational torque vector and resultant change in angular momentum vector can be briefly described as follows (here, precession itself is neglected for the time being. for more detailed treatment, see [3, 6]). Denote the nutational angular momentum and torque as \vec{L}_n and $\vec{\tau}_n$. Write the nutational torque vector as elliptically rotating in time; $\vec{\tau}_n = e_1 A_1 \cos \omega_n t \mp e_2 A_2 \sin \omega_n t$ ('-' for retrograde, '+' for prograde). Then steady state solution for \vec{L}_n of the equation of motion; $\frac{d\vec{L}_n}{dt} = \vec{\tau}_n$, readily follows as $\vec{L}_n = e_1 \frac{A_1}{\omega_n} \sin \omega_n t \pm e_2 \frac{A_2}{\omega_n} \cos \omega_n t$

(‘+’ for retrograde, ‘-’ for prograde). These are illustrated in Figure 4. Viewed from above, the motions of each set of retrograde/prograde nutational torque and angular momentum are clockwise/anticlockwise rotations, and nutational torque is ahead of phase $\pi/2$ for both cases. The 18.6 year nutation is retrograde. Other major nutational components, such as fortnightly and semiannual, are mostly prograde, since the orbital rotations of the Moon and Sun (apparent motion relative to the Earth) are prograde. The number 1, 2, and 3 in Figure 4 represent successive times separated by a time increment Δt , and angular momentum change is given as $\Delta \vec{L}_n \simeq \vec{\tau}_n \Delta t$. The nutational angle is given as $\arctan(L_n / C\omega_e) \simeq L_n / C\omega_e$. While torque itself is the same for different nutational components of same origin (lunar or solar), lower frequency nutation evidently has larger amplitude due to the inverse frequency dependence of nutation angular momentum; $L_n = |\vec{L}_n| = |\tau_n| / \omega_n$. This is the reason why 18.6 year nutation has much larger amplitude than other short period ones. Likewise semiannual nutation is roughly six times larger than fortnightly one (remember lunar tide is twice larger than solar tide). However, semi-annual nutation is of larger amplitude than annual one (particularly for the case of $\Delta \varepsilon$). Similarly fortnightly nutation amplitude is larger than monthly one. These are due to symmetric nature of tidal force. If the eccentricities of lunar/solar orbits were smaller, the monthly and annual nutations would have been virtually nil.

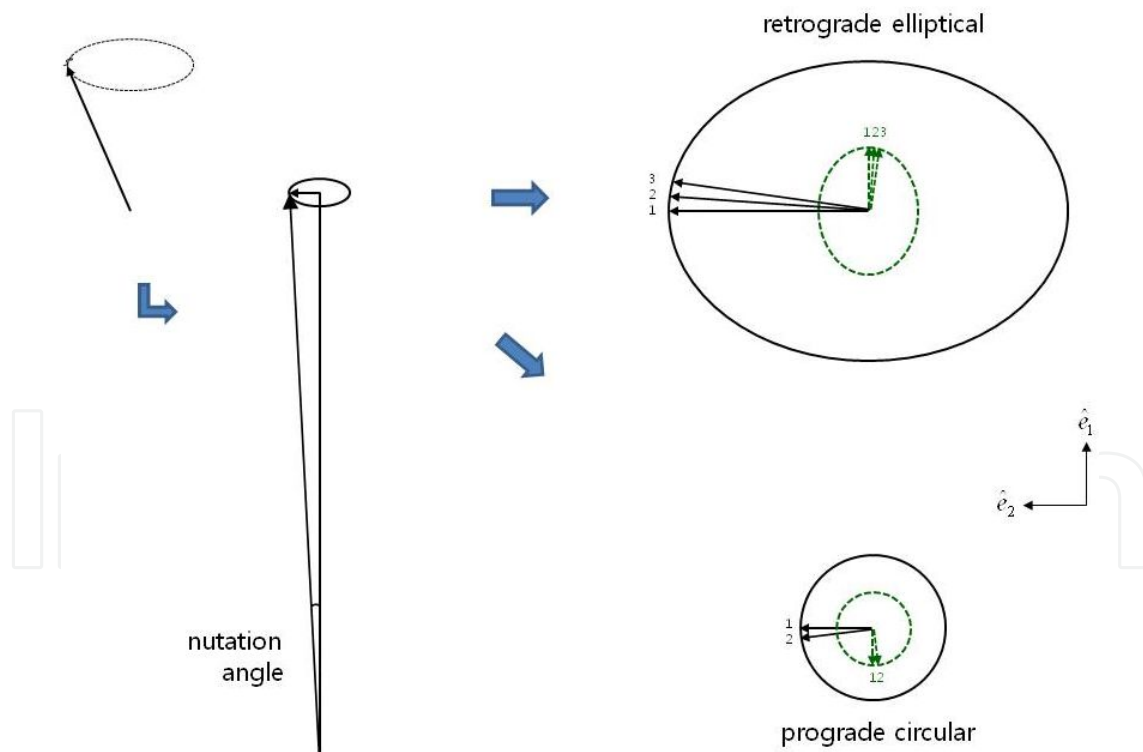


Figure 4. Schematic illustrations of precessional/nutational angular momentum and nutational torque. On the left, total angular momentum is shown. In the middle, nutation angle is described by two angular momentum vectors. On the right, two cases of nutation. (above: retrograde elliptical, below: prograde circular) are shown. Nutational torque vectors are drawn in olive. The two unit vectors \hat{e}_1 and \hat{e}_2 are in the direction of longitude decrease and obliquity increase respectively. For convenience, half cycle phase is added to vectors of prograde case.

Two angles used to specify nutation are denoted as $\Delta\epsilon$ and $\Delta\psi$, which are illustrated in Figure 5.

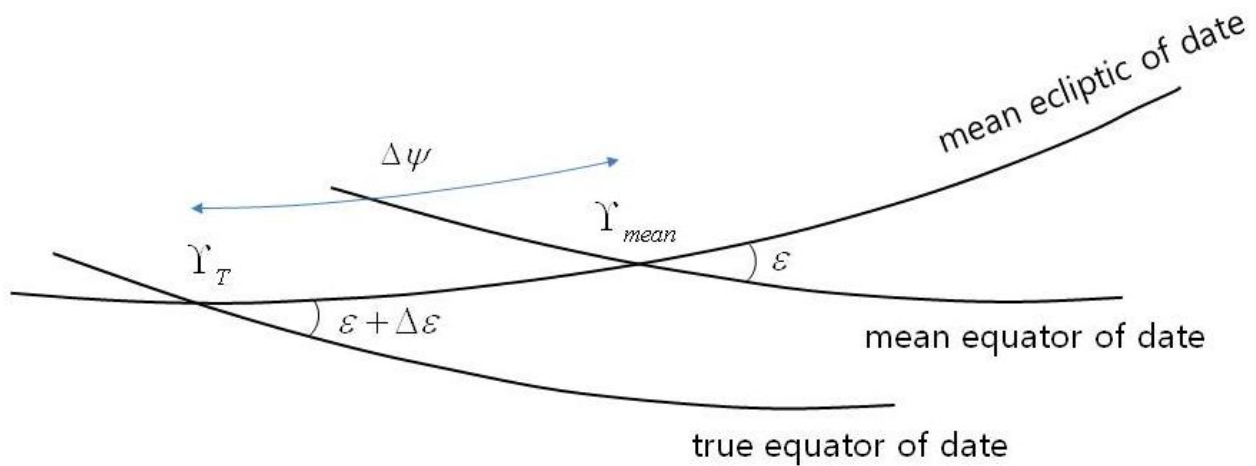


Figure 5. Nutation described by two angles $\Delta\epsilon$ and $\Delta\psi$.

In Table 1, several nutation components of largest amplitude are listed.

Period (day)	Amplitude of obliquity	Amplitude of longitude	Remark
	$\Delta\epsilon$	$\Delta\psi \sin\epsilon$	
6798.4	9203	6858	lunar orbital precession
365.3	5	57	annual
182.6	574	526	semi annual
27.6	1	28	monthly
13.7	98	91	fortnightly
9.1	13	12	modulated

Table 1. Amplitudes of six largest nutation components [unit: milliarcsec]

The amplitude ellipses of four major components of Earth’s nutation are shown in Figure 6.

The transformation matrix corresponding to the nutation described by the two angles $\Delta\epsilon$ and $\Delta\psi$ is given as $R_{nut} = R_1(-\epsilon - \Delta\epsilon)R_3(-\Delta\psi)R_1(\epsilon)$. The period of the largest nutational component is 18.6 years, which corresponds to the retrograde precession of the lunar orbital plane. Next largest components are semiannual, fortnightly, annual and monthly nutations. The most recent model for the precession and nutation has been reported by Mathews *et al.* [12], which is adopted by International Astronomical Union (IAU) as current standard model [11-12]. Although out-dated, nutation calculated by using rigid Earth approximation of former studies [13-14] show close match with the most recent one [12]. This is due to the fact that the Earth behaves as an almost perfectly rigid body at such slow variations as the pre-

cession and nutations. It is noted that the model of Mathews *et al.* was preceded by several other nutation models for nonrigid Earth. For example, see [15-18].

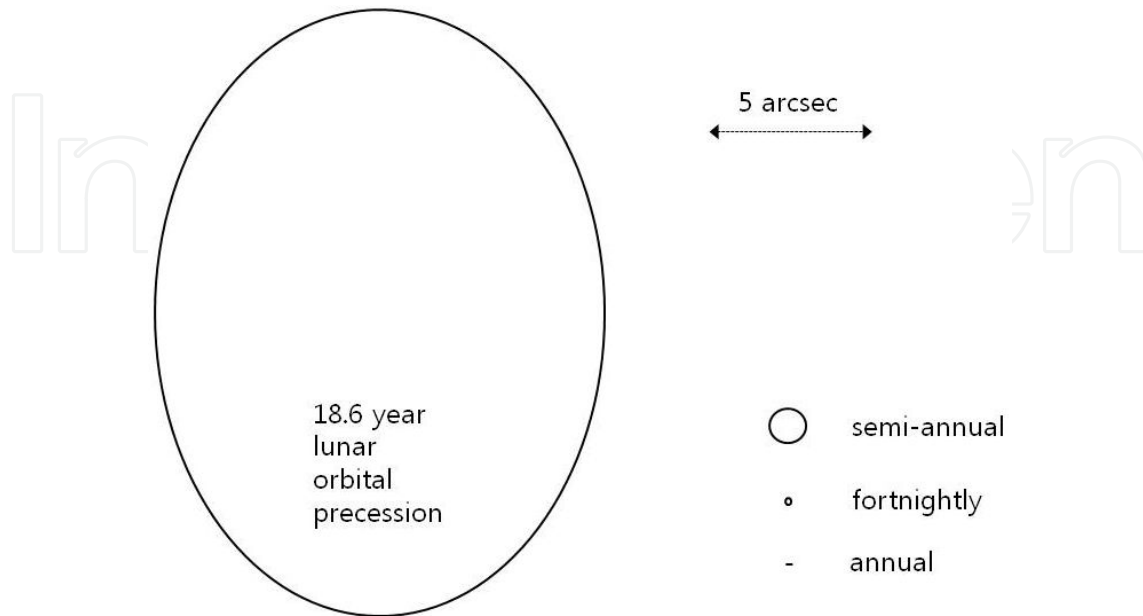


Figure 6. Comparison on size and shape of the nutation ellipses of four major components; 18.6 year, semiannual, fortnightly, and annual. A scale arrow of 5 arcsec is drawn for reference.

There are other ways to represent the coordinate transform associated with the Earth’s precession and nutation. One of them is to use the position of pole projected onto the ICRF plane, of which orientation to quasars is invariable. IAU 2006 recommended to use a set of associated new terms and definitions as described below. For details, see [7] and references therein.

The transformation matrix, which incorporates both precession and nutation together, can be written as follows.

$$R_{prec+nut} = \begin{pmatrix} 1-bX^2 & -bXY & -X \\ -bXY & 1-bY^2 & -Y \\ X & Y & 1-b(X^2+Y^2) \end{pmatrix}$$

where b is defined as $b=1/(1+Z)$ with $Z=\sqrt{1-X^2-Y^2}$. Followings are IAU 2006 expressions for X and Y without explicitly showing all the oscillatory terms of nutation.

$$X = -0.016617'' + 2004.191898'' T - 0.4297829'' T^2 - 0.19861834'' T^3 + 0.000007578'' T^4 + 0.0000059285'' T^5 + \text{oscillatory terms}$$

$$Y = -0.006951'' - 0.025896'' T - 22.4072747'' T^2 + 0.00190059'' T^3 + 0.001112526'' T^4 + 0.0000001358'' T^5 + \text{oscillatory terms}$$

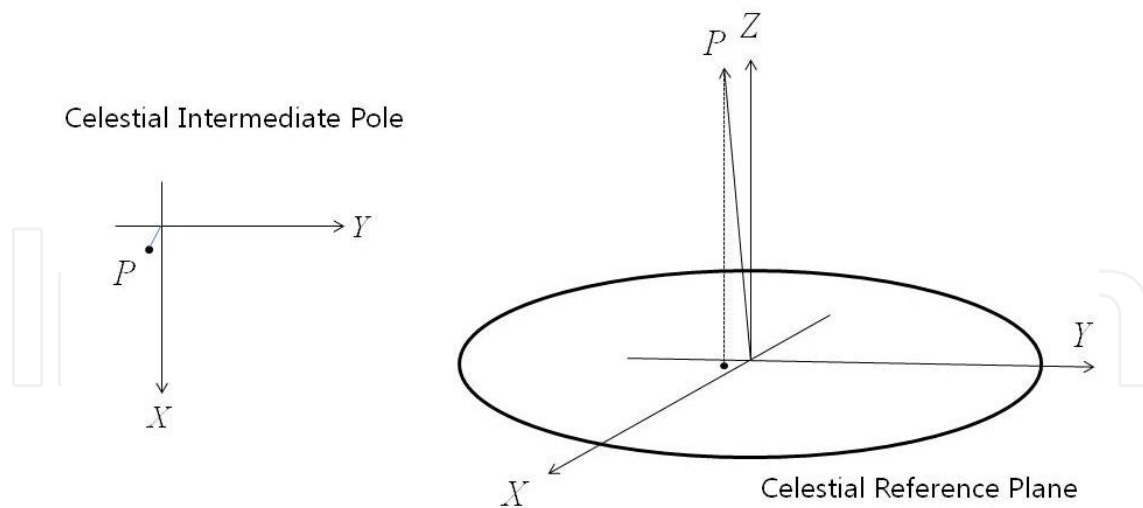


Figure 7. Celestial Intermediate Pole referenced to the CRF equator.

3. Secular deceleration

Although variation in the magnitude of Earth’s spin rotation had not been detected easily in their days, some investigators, such as I. Kant and G. Darwin, suspected the Earth’s deceleration. With careful reasoning only, they correctly concluded that the Earth should be secularly decelerated due to tidal friction in the oceans and solid Earth and that the lunar orbit should be modified accordingly. A schematic illustration for this secular interaction is given in Figure 7. In the figure, the two identical Earth tidal bulges exist with minute phase delay due to tidal friction. Amplitude of body tide in the Earth exceeds 20 cm in most area over the world, and that of ocean tide is usually larger. Phase lag of body tide is found to be a few degrees, and differs for each tidal constituent. Phase lag of ocean tide is known to vary largely at places. The associated energy dissipation in ocean and solid Earth exceeds 3.0 Terra Watt. Tidal torque, which is due to the gravitational pull from the tide raising body (either the Moon or the Sun) to the misaligned tidal bulges, reduces spin angular momentum of the Earth. Equal and opposite torque should exist and increase the angular momentum of orbital rotation. Total angular momentum of the Earth-Moon system can be approximately expressed as

$$L = (M_e r_e^2 + M_m r_m^2) \omega_m = \frac{M_e M_m}{M_e + M_m} r^2 \omega_m,$$

where r is Earth-Moon distance, r_e and r_m are two each

distances from the center of mass (approximately, $\frac{1}{81}r$ and $\frac{80}{81}r$), and M_e and M_m are masses of the Earth and Moon respectively. Since lunar orbital parameters satisfy Kepler’s third law, increase of lunar angular momentum is accompanied with increase of the Earth-Moon distance and decrease of lunar angular velocity; from $r^3 \omega_m^2 = G(M_e + M_m)$, relation between the two increments dr and $d\omega_m$ is acquired as $3 dr / r = -2 d\omega_m / \omega_m$. Tide raised in the Moon by the Earth should be larger in amplitude than Earth tide, but its effect is quite smaller in the secular

deceleration due to the spin-orbit synchronous rotation of the Moon. It should be noted that the above arguments are based on the approximation neglecting the Earth's obliquity and lunar orbital inclination to the ecliptic.

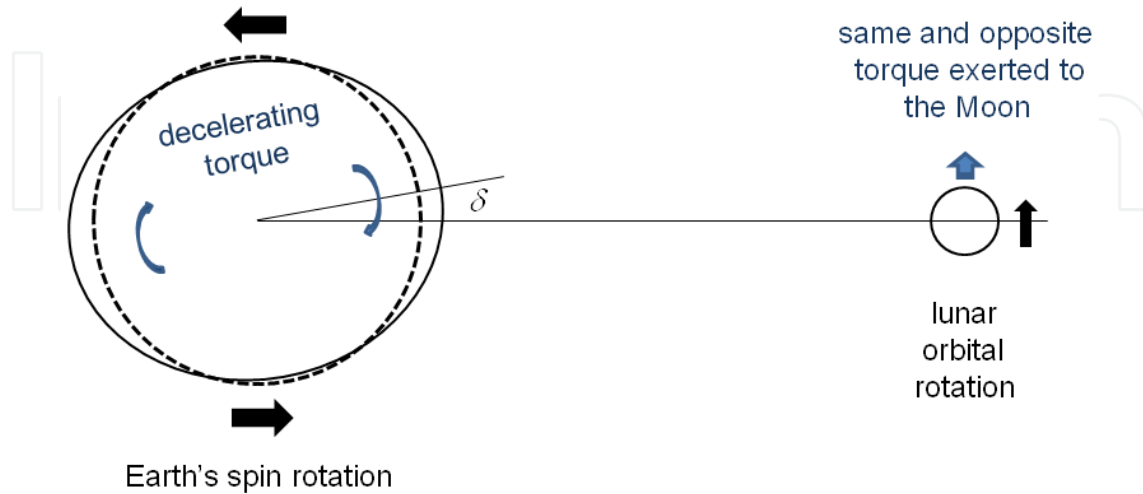


Figure 8. Schematic illustration for tidal deceleration of the Earth and Earth-Moon distance increase due to their tidal interaction.

Solar tide in the Earth is about half of lunar tide in amplitude, and it significantly contributes to Earth's deceleration (about 20%). However, unlike the lunar orbital change, the change in the Earth-Sun distance or Earth's orbital rotation period due to the Earth-Sun tidal interaction is too small to be accurately observed.

G. Darwin carried elaborate formulation and calculation for changes in the dynamical state of the Earth-Moon system, and extended further arguments [19]. Faster rotation of the Earth in the geological past was later identified from paleontological evidences. Historical eclipse records also revealed positive indications about the Earth's deceleration. Direct confirmations of the secular changes in the Earth's rotational state and lunar orbit have become available after operation of accurate atomic clocks and lunar laser ranging. Lunar laser ranging started since Apollo 11 landing in 1969, and enabled direct estimate of the present lunar recession as 3.82 cm/yr. Other related studies are satellite orbit analysis and ocean tide modeling. The fact that the Moon was closer to the Earth in the past, led G. Darwin to the fission hypothesis for lunar origin. Other hypotheses suggested for lunar origin were capture, binary accretion, and impact theories. This interesting topic has been occasionally re-visited [20].

In these days, estimates about the Earth's deceleration rate by different approaches seem to converge, so that the LOD is now generally believed to increase with a rate of 1.8 millisecond / cy. Without glacial isostatic adjustment, this rate would be 2.3 millisecond / cy, however, there is large uncertainty in the variation of LOD mainly due to slow and complicated flows in the deep interior of the Earth. Recent fast retreat of glaciers and associated changes in the Earth's moments of inertia contribute to the variation of LOD by a certain amount, which is not accurately known.

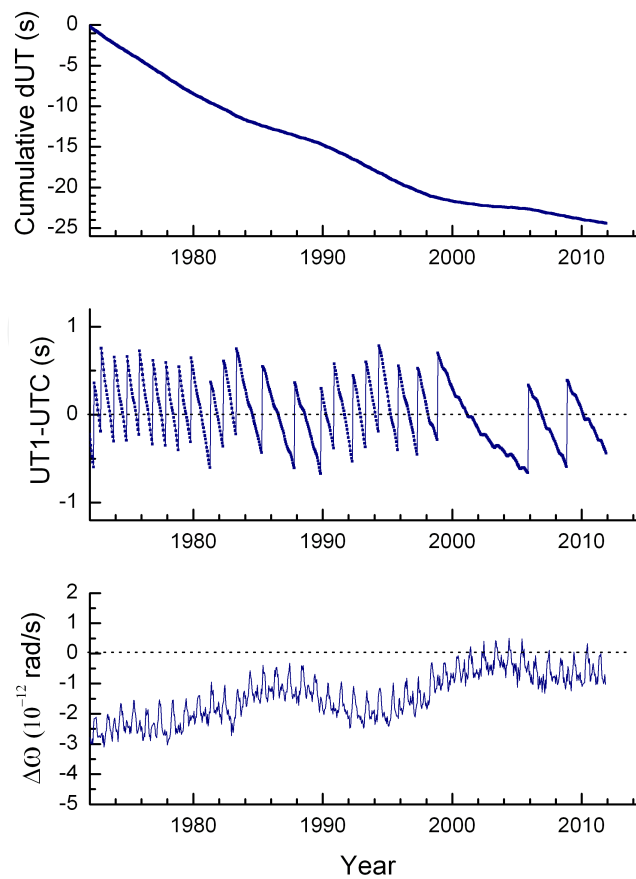


Figure 9. Recent 40 years data of delay in the universal time (UT) and Earth’s angular velocity; cumulative delay in UT1 (top), difference between UT1 and UTC with leap seconds seen as steps (middle), and the excessive Earth’s angular velocity deduced from UT1 delay (bottom).

In Figure 9, recent variation of UT1 is illustrated by three different ways. Above, cumulative delay in UT1 is shown, and then, in the middle, difference between UT1 and UTC (UT1-UTC) is shown. Including the last leap second introduced at the midnight of June 30th of 2012, there were total 25 leap seconds since 1972. The bottom graph shows the excessive amount of Earth’s spin angular speed $\Delta\omega$ from its nominal value $\omega_0 = 7.292115 \times 10^{-5} \text{ (rad / s)}$. Recent Earth’s spin angular velocity, as can be seen in Figure 9(bottom), has been increasing in minute amount. This tendency can also be noticed from reduced number of leap seconds during the last twelve years or so.

Energy dissipation and angular momentum transfer via the tidal interaction process can be expressed simply in terms of dr (infinitesimal increase in the Earth-Moon distance) for isolated Earth-Moon system with neglecting Earth’s obliquity and lunar inclination. The work involved in the process of angular momentum transfer is given as

$$dW = -d\left(\frac{1}{2}I_e\omega_e^2\right) = -I_e\omega_e d\omega_e = -\tau_e\omega_e dt.$$

After a little algebra, this can be re-written as

$$dW = \left(\frac{M_e M_m r}{2(M + M)} - \frac{3I_m}{2r}\right)\omega_m \omega_e dr.$$

The mechanical energy increase dE is given as

$dE = [-\frac{1}{2}(\frac{M_e M_m}{M_e + M_m})r - \frac{3I_m}{2r}] \omega_m^2 dr + \frac{GM_e M_m}{r^2} dr$. The difference between dW and dE , i.e., $dQ = dW - dE$ is the dissipated energy during the process. In fact, the majority of the work (96.3%) is dissipated into heat. This argument is valid regardless of the places where the dissipation occur. The estimates for the work rate $\frac{dW}{dt}$ and the tidal torque τ of present days are found as $3.30 \times 10^{12} \text{ Watt}$ and $4.52 \times 10^{16} \text{ N} \cdot \text{m}$. More elaborate calculation with including Earth's obliquity, lunar inclination, and solar tidal dissipation leads to slightly different estimates; 96.6%, $3.56 \times 10^{12} \text{ Watt}$, and $4.88 \times 10^{16} \text{ N} \cdot \text{m}$. The corresponding values for present Earth deceleration and lunar orbital retardation are $\frac{d\omega_e}{dt} = -6.08 \times 10^{-22} \text{ rad} / \text{s}^2$ and $\frac{d\omega_m}{dt} = -1.26 \times 10^{-23} \text{ rad} / \text{s}^2 = -25.9'' / \text{cy}^2$.

Analysis on satellite orbit can yield estimate of the tidal torque, which decelerates the Earth. If there were not any other force exerting on a satellite rather than Earth's central gravitational attraction, its orbit would be a perfect ellipse. Due to luni-solar gravitational attraction, solar radiation pressure, and others, satellites undergo certain changes in their orbital configurations. Although the Earth's gravity field perturbation due to its tidal deformation is not quite large, satellite tracking has been precise enough to detect such effect on satellite orbits since late 70s [21-23]. By extending this kind approach to the Moon, the only natural satellite of the Earth, they estimated lunar orbital retardation as 27.4, 25.3, and 24.9 '' / cy² [21-23]. Christodoulidis *et al.* accordingly estimated the present Earth deceleration rate as $-5.98 \times 10^{-22} \text{ rad} / \text{s}^2$ [22].

Since the late 60s, ocean tide modeling has been attempted, and global ocean tide models were acquired as numerical solution of Laplace's tidal equation with grid spacing larger than 2×2 . By using acquired global ocean tide model, it is possible to calculate the tidal torque that decelerate the Earth. Estimates for Earth's secular deceleration based on the first-generation ocean tide models were summarized by Lambeck [24]. With fast development of computing devices, much more extensive modelings have been acquired lately, such as NAOJ99, FES2004, EOT11, *etc.* In fact, better performance of recent models is feasible due also to sea surface height data derived from satellite altimetry (TOPEX/POSEIDON). Ray *et al.* combined the satellite altimetry and orbit analysis and estimated the Earth's deceleration rate as $-1304'' / \text{cy}^2$, which is $-6.35 \times 10^{-22} \text{ rad} / \text{s}^2$ and corresponds to LOD increase rate of 2.37 ms/cy [25]. Table 2 is based on their results.

Tidal constituent	M_2	K_1	S_2	O_1	N_2	P_1	K_2	Q_1	Total
Acceleration	-919	-120	-73	-71	-40	-13	-10	-3	-1304

Table 2. Estimate of Earth's secular deceleration by each ocean tide constituents. [unit: arcsec/cy²] [25].

Accumulation of universal time delay ΔT due to a constant LOD increase of 2.0 millisecond/cy for a century corresponds to 36.525s; $\Delta T = \frac{1}{2} \times 36525 \times 0.002s = 36.525s$. A thousand year accu-

mulation (ten times longer) by the same rate would result in $\Delta T = 3652.5$ s (hundred times) delay, which is about one hour. Similarly two thousand year accumulation would result in about four hours delay. In fact, a correction term linear to time span should be added unless the time span is measured from the reference epoch, which is the year AD 1820 [26]. Astronomical evidences about the Earth's deceleration and lunar orbital retardation can be categorized into two different kinds of records; (i) 'telescopic observation,' which has been carried for a few hundred years, and (ii) 'solar eclipse record,' which can be found from thousands year old Chinese literature or Babylonian inscriptions on clay tablets. Figure 10 is a redrawing of ΔT curve based on the observations of transit of Mercury and lunar occultation [27].

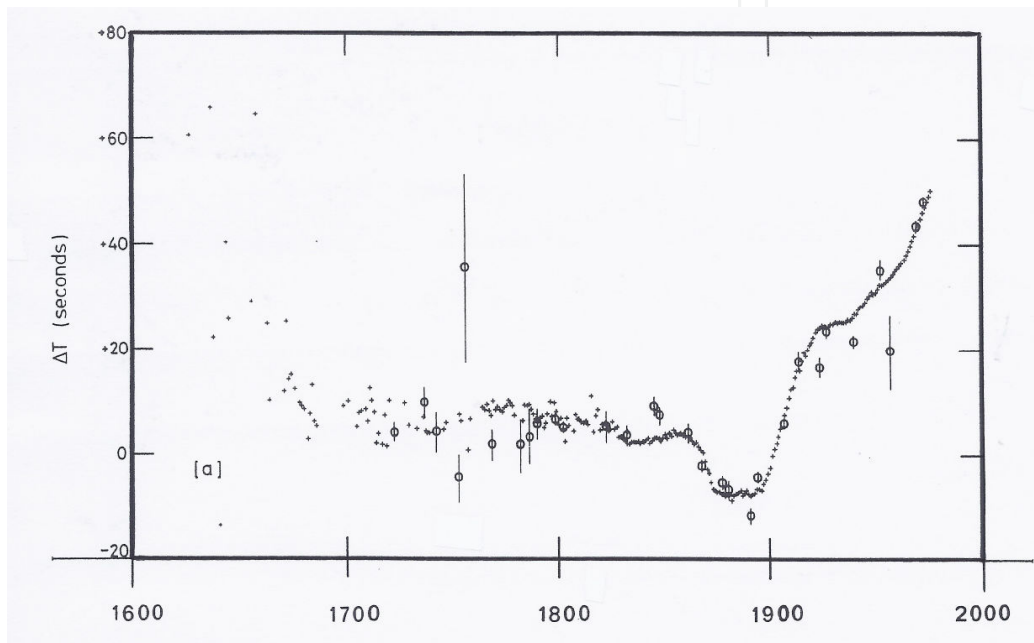


Figure 10. Values of ΔT between year 1627 and 1975 based on the observations of lunar occultation and transit of Mercury [27].

The parabolic trend of ΔT curve is due to the Earth's secular deceleration. As shown in Figure 10, the secular deceleration is superposed with large fluctuations, which are ascribed to processes in the Earth's core and mantle. From these data, Morrison determined lunar orbital retardation as $\frac{d\omega_m}{dt} = -26'' / cy^2$ [27], which is quite close to recent and reliable estimate by lunar laser ranging and others. From vast amount of historical records of solar eclipse and others, an empirical formula was found for ΔT as follows;

$$\Delta T = -20 + 31t^2 \tag{5}$$

where ΔT is in second, and t is time from AD 1820 in century [26]. Later the quadratic coefficient was adjusted from 31 to 32 [28]. Two corresponding rates of LOD increase are 1.70 and 1.75 millisecond/cy. It is noted that there were other estimates of same sorts, which largely

differ from those introduced above. For example, see [29-30]. In Figure 11, curve of ΔT determined from observations between 500 BC and AD 1300 [26], and an approximate curve of ΔT based on Morrison’s table [28] are shown.

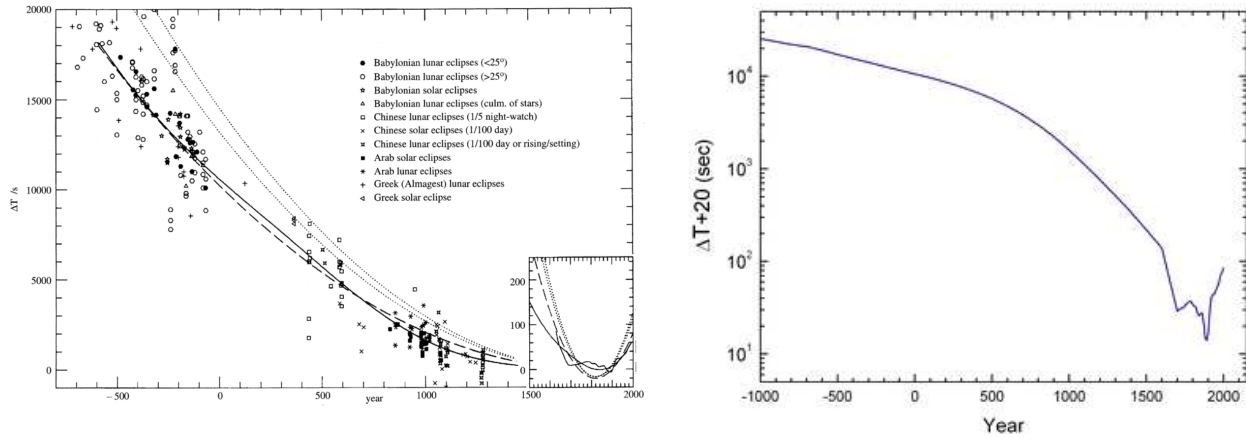


Figure 11. Two sets of ΔT data and curves: ΔT determined from observations between 500 BC and AD 1300 and their parabola fittings. Inset is set of data and fittings for later times [26] (left), and an approximate curve of ΔT based on tabulated data in [28] (right, $\Delta T + 20s$ is drawn in logarithmic scale).

Paleontological evidences exist for faster rotation of the Earth in the Mesozoic and Paleozoic era. As trees retain yearly growth rings, certain organisms, such as coral and shell, can record high and low ocean tides in their hard parts due to differential growth. Careful counting of these growth lines in fossil specimen yielded the numbers of days per month and year at geological past [31-33]. Lambeck estimated Earth’s deceleration rate and lunar orbital retardation rate from those numbers [33]. His estimates based on fossil bivalve data were $\frac{d\omega_e}{dt} = -5.9 \times 10^{-22} \text{ rad/s}^2$ and $\frac{d\omega_m}{dt} = -1.3 \times 10^{-23} \text{ rad/s}^2 \approx 27''/cy^2$. These estimates were proved to be quite reasonable by later studies. Therefore, tidal dissipation and associated lunar orbital change must have occurred rather consistently during hundreds of millions years regardless of decadal fluctuations due to core/mantle processes in the Earth or other perturbations. Followings are the formulation developed by Lambeck for the analysis of paleontological data.

$$\begin{aligned}
 N_1 &= \frac{\omega_e - \omega_s}{\omega_s}, \quad N_2 = \frac{\omega_e - \omega_s}{\omega_m - \omega_s}, \quad N_3 = \frac{\omega_m - \omega_s}{\omega_s} & \text{a} \\
 \frac{dN_1}{dt} &= \frac{1}{\omega_s} \frac{d\omega_e}{dt}, \quad \frac{dN_2}{dt} \approx \frac{1}{\omega_m - \omega_s} \frac{d\omega_e}{dt} - \frac{\omega_e - \omega_s}{(\omega_m - \omega_s)^2} \frac{d\omega_m}{dt}, \quad \frac{dN_3}{dt} \approx \frac{1}{\omega_s} \frac{d\omega_m}{dt} & \text{b} \\
 \frac{1}{\omega_s} \begin{bmatrix} 1 & 0 & t & 0 \\ 1 & -\beta & t & -\beta t \\ 0 & 1 & 0 & t \end{bmatrix} \begin{bmatrix} \Delta\omega_e \\ \Delta\omega_m \\ d\omega_e/dt \\ d\omega_m/dt \end{bmatrix} &= \begin{bmatrix} N_1 + 1 - \omega_e(t_0)/\omega_s \\ \frac{\omega_m(t_0) - \omega_s}{\omega_s} N_2 + 1 - \omega_e(t_0)/\omega_s \\ N_3 + 1 - \omega_m(t_0)/\omega_s \end{bmatrix} & \text{c}
 \end{aligned} \tag{6}$$

N_1, N_2, N_3 are the numbers of solar days per year and synodic month, and the number of synodic month per year respectively. Time derivatives of these three numbers are expressed as in equation (6b)

Write $\omega_e(t) = \omega_e(t_0) + \Delta\omega_e + (d\omega_e/dt)t$ and $\omega_m(t) = \omega_m(t_0) + \Delta\omega_m + (d\omega_m/dt)t$, then the condition equation for the unknowns $\frac{d\omega_e}{dt}, \frac{d\omega_m}{dt}, \Delta\omega_e,$ and $\Delta\omega_m$ is written as in equation (6c) with $\beta = \frac{\omega_e(t_0) - \omega_s}{\omega_m(t_0) - \omega_s}$. While the estimates of different studies based on the historical eclipse records varied widely on two quantities $\frac{d\omega_e}{dt}$ and $\frac{d\omega_m}{dt}$, the reliability of estimate based on paleontological record is noticeable.

Numerical extrapolation for the past/future lunar orbit was first attempted by Darwin [19], and later by many other investigators including Goldreich, Migard, Hansen, and Webb [34-37]. Goldreich calculated the past state of the Earth-Moon system by using three time steps; year, period of lunar orbital precession, and secular [34]. Goldreich and Mignard avoided time scale problem by using the Earth-Moon distance as the independent variable. Calculations of Hansen and Webb were based on each idealized ocean tide modeling. Hansen specified two kinds of paleo-ocean configurations for his calculation; one - circular continent at polar region and the other - circular continent at equator [37]. Webb used the orientation averaged ocean with one continental cap. By extending Kaula's satellite orbit theory, Lambeck derived differential equations for lunar orbital evolution. By using those Lambeck's formulae with modification, the extrapolation was recently repeated [38], and its set of the calculated past Earth-Moon distance for different tidal friction parameter is shown in Figure 12. According to this result, the Moon could have been at close approach to the Earth at different times, from 1.6 - 4.0 billion years ago or even earlier depending on the amount of reduction in tidal friction in the past.

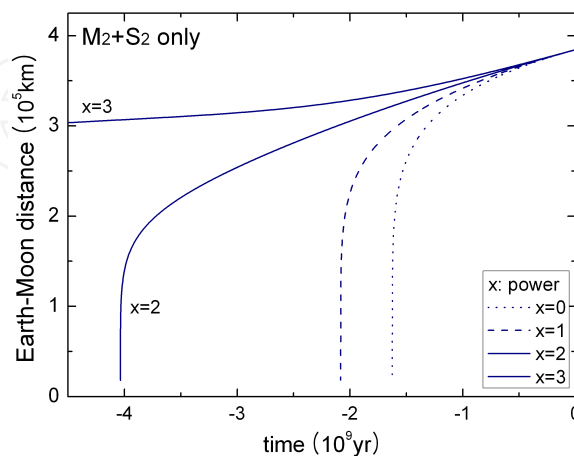


Figure 12. Calculated Earth-Moon distance in the past. According to the modified Lambeck's formulae with assuming power law behavior for tidal phase lag angle. M_2 and S_2 tidal constituents only are considered [38].

Calculated values of five parameters (eccentricity, obliquity, lunar orbital inclination, ω_e , and ω_m) in the future are shown in Figure 13. The scale factor is ratio of Earth-Moon distance to its present value, *i.e.*, r/r_0 . As the ratio increases from 1.0 (present) to 1.2-1.3, Earth's spin angular velocity decreases almost linearly, and obliquity angle increases abruptly up to and over 60 degrees, while other parameters of lunar orbit gradually change in small amounts.

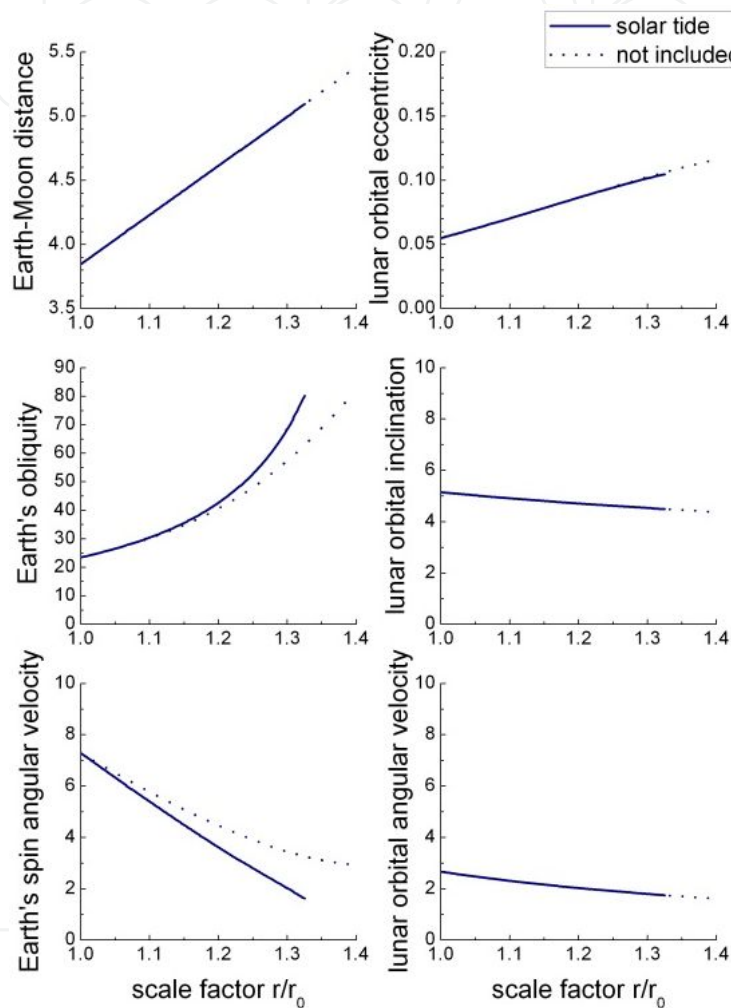


Figure 13. Calculated Earth-Moon system configuration in future by modified Lambeck's formulae. The horizontal axis is the ratio r/r_0 . Solid lines correspond to those including solar tidal dissipation, while dotted lines correspond to those not including it. The units are [10^8 m], [none], [deg], [deg], [10^{-5} rad/s], and [10^{-6} rad/s] from left top.

There exist four hypotheses suggested for the lunar origin; (i) 'fission', (ii) 'capture', (iii) 'binary accretion', and (iv) 'impact.' It is difficult to verify/trace such a far distant past event like the Earth-Moon system formation, and one may consider only feasibilities of those hypotheses. A brief sketch of these four hypotheses is given here. Fission hypothesis, suggested by Darwin [19], is an explanation of lunar origin as a result of mechanical resonance of the early Earth, which should have been rotating very fast. Since the natural period of foot ball mode of Earth's free oscillation is 54 minutes, the mechanical resonance to eject a part of mantle might have

been possible, provided the early Earth had been rotating with a period about two hours or so. If the Earth would gain the angular momentum, which was lost due to both lunar and solar tidal interactions during the whole past of billion years, this fast rotation could be possible. Fission theory is also compatible with the fact that the lunar mass density is quite close to that of the Earth's mantle. Problem with the fission theory is that direct calculation of the Earth-Moon system back to the past should lead to high inclination angle of the lunar orbit. One has to imagine a certain scenario, such as close approach of Venus to perturb lunar orbit, to reconcile the imperfection. Capture hypothesis states that the Moon was initially formed independently and later captured by the Earth's gravity field during its passage near the Earth. Suppose it approached by following a hyperbolic/parabolic orbit with respect to the Earth, there should have been a mechanism to explain the change of lunar orbit. Gerstenkorn event is one such explanation claiming the Moon had approached in a retrograde orbit and then undergone its orbital change from hyperbolic to elliptic due to severe lunar tidal dissipation. Problem with the Gerstenkorn event is that, even at closest distance, tidal interaction cannot perform with such an extreme efficiency. Could there be other alternative stopping mechanism, then the capture hypothesis may remain feasible. Binary accretion hypothesis states that the Moon was formed with the Earth together as two isolated bodies by planetesimal accumulation from the beginning stage of the Earth-Moon system. Had the Moon been formed as an isolated body from the Earth, the low density of the Moon cannot be explained. Impact hypothesis emerged in the late 70s and was numerically simulated later. Suppose an object of 0.1 Earth's mass or so had collided with the early Earth, the Moon could have been formed afterwards by accretion of the remaining fragments. Impact hypothesis has been favored, because the Moon is depleted of volatile elements.

Like other major natural satellites, such as Galilean satellites, the Moon is already in synchronous rotation so that it always shows the same face toward the Earth. This synchronous rotation of the Moon can be maintained due also to another tidal interaction - dissipation of tide in the Moon raised by the Earth. Unless other impact with large third body or comparable perturbations, the Earth-Moon system will undergo secular changes as described above; the Earth's spin will slow down with its obliquity increase, and the lunar orbit will become larger with small decrease in its inclination angle.

4. Liouville equation and excitation function

In this section, the equation of motion for Earth's angular velocity perturbation is derived in the Earth fixed reference frame by neglecting elastic deformation and other complicated features of the real Earth. First, the general equation of motion for rigid body rotation and Euler's equation for wobble are derived. Further considerations will be followed after then.

Spin angular momentum of a rotating body can be written as $\vec{L} = \int \vec{r} \times \vec{v} dm$, where the center of its mass can be taken as the coordinate origin. Equation of motion states that the time rate of angular momentum equals to the exerting torque; $\frac{d\vec{L}}{dt} = \vec{\tau}$. In rotating coordinate frame,

time derivative should be considered with retaining terms due to change in the direction of reference frame in space (in Appendix), so that the equation of rotational motion in body frame is rewritten as follows.

$$\frac{d\vec{L}}{dt} + \vec{\omega} \times \vec{L} = \vec{\tau} \quad (7)$$

Taking the principal axes of body as reference frame axes, then \vec{L} and $\vec{\omega} \times \vec{L}$ are simply expressed as follows.

$$\begin{aligned} L_i &= \sum_{j=1}^3 I_{ij} \omega_j \Rightarrow I_i \omega_i, \text{ i.e., } \vec{L} = \omega_1 I_1 \hat{e}_1 + \omega_2 I_2 \hat{e}_2 + \omega_3 I_3 \hat{e}_3 & \text{a} \\ \vec{\omega} \times \vec{L} &= (\omega_1 \hat{e}_1 + \omega_2 \hat{e}_2 + \omega_3 \hat{e}_3) \times (\omega_1 I_1 \hat{e}_1 + \omega_2 I_2 \hat{e}_2 + \omega_3 I_3 \hat{e}_3) & (8) \\ &= \omega_2 \omega_3 (I_3 - I_2) \hat{e}_1 + \omega_3 \omega_1 (I_1 - I_3) \hat{e}_2 + \omega_1 \omega_2 (I_2 - I_1) \hat{e}_3 & \text{b} \end{aligned}$$

where the principal moments of inertia I_i replace inertia tensor I_{ij} (underlying basic summarized in Appendix).

Then Equation 7 is rewritten as

$$\begin{aligned} I_1 \frac{d\omega_1}{dt} + \omega_2 \omega_3 (I_3 - I_2) &= \tau_1 & \text{a} \\ I_2 \frac{d\omega_2}{dt} + \omega_3 \omega_1 (I_1 - I_3) &= \tau_2 & \text{b} \\ I_3 \frac{d\omega_3}{dt} + \omega_1 \omega_2 (I_2 - I_1) &= \tau_3 & \text{c} \end{aligned} \quad (9)$$

In case two values I_1 and I_2 are same ($I_1 = I_2 \Rightarrow I$), then Equation 9c becomes simple;

$I_3 \frac{d\omega_3}{dt} = \tau_3$. Its solution can be expressed as $\omega_3(t) = \omega_0 + \frac{1}{I_3} \int_{t_0}^t \tau(t') dt'$. The solution $\omega_3(t)$ for sinusoidal torque of frequency ω_d as $\tau(t) = \tau_0 \cos \omega_d t$ is readily acquired as $\omega_3(t) = \text{constant} + \frac{\tau_0}{I_3 \omega_d} \sin \omega_d t$. As a further restriction, if the external torque does not exist ($\vec{\tau} = 0$), then $\omega_3(t)$ should remain constant as $\omega_3 = \omega_0$ and the two Equations 9a-b become as follows.

$$I \frac{d\omega_1}{dt} + \omega_2 \omega_0 (I_3 - I) = 0, I \frac{d\omega_2}{dt} + \omega_0 \omega_1 (I - I_3) = 0 \quad (10)$$

The coupled solution for ω_1 and ω_2 of Equation 10 is found as a circular motion as follows.

$$\omega_1 = m\omega_0 \cos\Omega t, \omega_2 = m\omega_0 \sin\Omega t \quad (11)$$

where $\Omega = \frac{I_3 - I}{I} \omega_0$. The argument Ωt may be added with a phase angle; $\Omega t \Rightarrow \Omega t + \phi$. Amplitude $m\omega_0$ and phase angle ϕ can be specified as initial condition. This rotational motion is often called Eulerian free nutation or wobble. Suppose a body initially rotating along its principal axis is agitated by a small perturbation, then the rotating body will undergo a wobbling motion as it rotates.

If the Earth were perfectly rigid, the frequency of its wobbling motion should be specified as $\Omega = \frac{C - A}{A} \omega_0$, of which corresponding period is 304.5 sidereal days, *i.e.*, 303.6 days. As rigid Earth rotates daily, an observer on it would see that both the angular momentum and velocity vectors slowly encircle the x_3 -axis (Figure 14). The three vectors stay on a same rotating plane (not shown in the Figure), and the angles between them remain unchanged. Due mainly to finite elasticity of the Earth's mantle, the period of real Earth's wobble is increased by roughly twenty percent. The estimate according to recent observation is about 433 ~ 434 days. To honor the one who first observed this motion, it is called Chandler wobble.

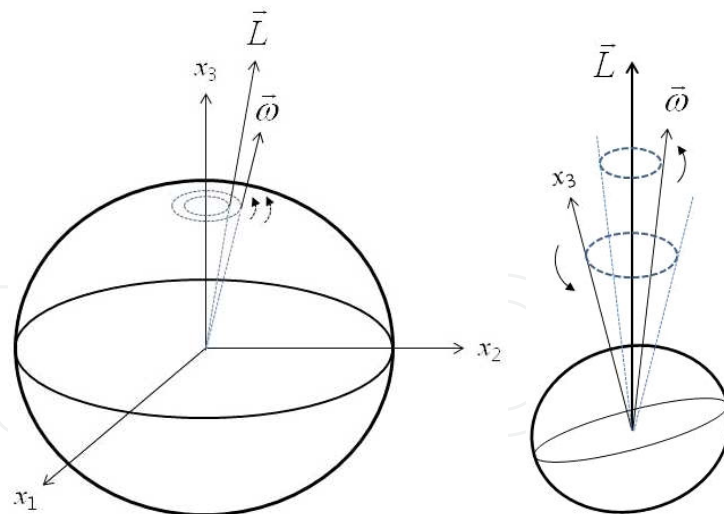


Figure 14. Two illustrations of wobble (free Eulerian nutation). Precession of the angular velocity and momentum vectors around the principal axis (x_3 -axis) seen by an observer on the body (left). To an observer in space, the angular momentum vector remains unchanged, while the angular velocity vector and x_3 -axis rotate around it (right).

Denote small variations in inertia tensor, angular velocity, and angular momentum as ΔI_{ij} , $\omega_0 \vec{m} = \omega_0(m_1, m_2, m_3)$, and $\vec{h} = (h_1, h_2, h_3)$, then the terms for angular momentum and Equation 7 are rewritten as follows.

First, inertia tensor I_{ij} is written as

$$\begin{bmatrix} I_{11} & I_{12} & I_{13} \\ I_{21} & I_{22} & I_{23} \\ I_{31} & I_{32} & I_{33} \end{bmatrix} = \begin{bmatrix} A & 0 & 0 \\ 0 & A & 0 \\ 0 & 0 & C \end{bmatrix} + \begin{bmatrix} \Delta I_{11} & \Delta I_{12} & \Delta I_{13} \\ \Delta I_{21} & \Delta I_{22} & \Delta I_{23} \\ \Delta I_{31} & \Delta I_{32} & \Delta I_{33} \end{bmatrix}$$

It is noted that $I_{ij} = I_{ji}$, i.e., inertia tensor is symmetric.

Angular velocity $\vec{\omega}$ is written as

$$\begin{bmatrix} \omega_1 \\ \omega_2 \\ \omega_3 \end{bmatrix} = \omega_0 \begin{bmatrix} 0 \\ 0 \\ 1 \end{bmatrix} + \omega_0 \begin{bmatrix} m_1 \\ m_2 \\ m_3 \end{bmatrix} = \omega_0 \begin{bmatrix} m_1 \\ m_2 \\ 1 + m_3 \end{bmatrix}$$

Angular momentum \vec{L} in tensor form is given as $L_i = \sum_j I_{ij} \omega_j + h_i$, and its matrix representation is given as

$$\begin{bmatrix} L_1 \\ L_2 \\ L_3 \end{bmatrix} = \begin{bmatrix} A + \Delta I_{11} & \Delta I_{12} & \Delta I_{13} \\ \Delta I_{21} & A + \Delta I_{22} & \Delta I_{23} \\ \Delta I_{31} & \Delta I_{32} & C + \Delta I_{33} \end{bmatrix} \omega_0 \begin{bmatrix} m_1 \\ m_2 \\ 1 + m_3 \end{bmatrix} + \begin{bmatrix} h_1 \\ h_2 \\ h_3 \end{bmatrix} \simeq \omega_0 \begin{bmatrix} Am_1 + \Delta I_{13} \\ Am_2 + \Delta I_{23} \\ C(1 + m_3) + \Delta I_{33} \end{bmatrix} + \begin{bmatrix} h_1 \\ h_2 \\ h_3 \end{bmatrix}$$

where first order terms only are retained with neglecting much smaller higher order terms. This equation has been called Liouville's equation.

After a little algebra, three components of the equation; $\frac{d\vec{L}}{dt} + \vec{\omega} \times \vec{L} = 0$ are found as follows.

$$\frac{dh_1}{dt} + \left(\frac{d\Delta I_{13}}{dt} + A \frac{dm_1}{dt} \right) \omega_0 - h_2 \omega_0 + [(C - A)m_2 - \Delta I_{23}] \omega_0^2 = 0$$

$$\frac{dh_2}{dt} + \left(\frac{d\Delta I_{23}}{dt} + A \frac{dm_2}{dt} \right) \omega_0 + h_1 \omega_0 + [(A - C)m_1 + \Delta I_{13}] \omega_0^2 = 0$$

$$\frac{dh_3}{dt} + \left(\frac{d\Delta I_{33}}{dt} + C \frac{dm_3}{dt} \right) \omega_0 = 0$$

Divide the first and second equations by $\omega_0(C - A)$ and rearrange terms, then the following two equations are found.

$$\frac{1}{\Omega} \frac{dm_1}{dt} + m_2 = \phi_2 - \frac{1}{\omega_0} \frac{d\phi_1}{dt} \quad \text{a}$$

$$\frac{1}{\Omega} \frac{dm_2}{dt} - m_1 = -\phi_1 - \frac{1}{\omega_0} \frac{d\phi_2}{dt} \quad \text{b}$$

$$\frac{dm_3}{dt} = -\frac{d}{dt} \left(\frac{h_3}{C\omega_0} + \frac{\Delta I_{33}}{C} \right) \quad \text{c}$$

(12)

where the two excitation functions ϕ_1 and ϕ_2 are defined as $\phi_1 = \frac{h_1}{(C-A)\omega_0} + \frac{\Delta I_{13}}{C-A}$ and $\phi_2 = \frac{h_2}{(C-A)\omega_0} + \frac{\Delta I_{23}}{C-A}$.

The third equation can be rewritten as in equation (12c)

In case with $h_3=0$, this is rewritten as $m_3 = -\frac{\Delta I_{33}}{C}$. The other case with $\Delta I_{33}=0$ is also obvious; $m_3 = -\frac{h_3}{C\omega_0}$. Suppose a periodic variation in h_3 or ΔI_{33} exists, then corresponding variation of same periodicity in m_3 should exist in an amount divided by $C\omega_0$ or C . Equation 12c can be related with changes in LOD and UT1 as follows.

$$-\frac{d}{dt}(UT1 - UTC) = \frac{\Delta LOD}{LOD} = -m_3 = \frac{h_3}{C\omega_0} + \frac{\Delta I_{33}}{C} \quad (13)$$

If the two excitation functions ϕ_1 and ϕ_2 do not exist, Equations 12a-b are the same as Equation 10, *i.e.*, the body will show pure wobble. In case there exists any periodic excitation, then a perturbation in polar motion of the same periodicity should be accompanied. This can be conveniently shown by complex notation. Write $m_c = m_1 + im_2$ and $\phi_c = \phi_1 + i\phi_2$, then we can rewrite Equation 12a-b simply as

$$\frac{1}{\Omega} \frac{dm_c}{dt} - im_c = -i\phi_c - \frac{1}{\omega_0} \frac{d\phi_c}{dt} \quad (14)$$

Write a periodic excitation as $\phi_c \propto e^{i\omega_a t}$, then its corresponding solution for m_c follows as

$$m_c = -\frac{\omega_0 + \omega_d}{\omega_0} \frac{\Omega}{\omega_d - \Omega} \phi_c \quad (15)$$

5. Variation in LOD and polar motion

Length of day (LOD), which is meant by the length of a solar day, is about 86400 second and slightly variable. The length of a sidereal day is about 86164 second. Besides the secular increase described in a former section, there exist periodic variations in LOD. Even before atomic clocks, precise quartz clocks provided measurement of seasonal perturbation in star transit time; being behind in spring and ahead in late summer by 20-30 millisecond, which should be accumulation of LOD variation of the same periodicity. Along with the seasonal perturbation, fortnightly

and monthly variations in LOD exist. Amplitudes of LOD variations of these different periodic components are in the order of one millisecond. Some amounts of these periodic perturbations are associated with body/ocean tides in the Earth. However, there is strong atmospheric effect on LOD variation. There also exist large quasiperiodic variations of much longer period range, called decadal fluctuation.

Body tidal variation of LOD is briefly described below. Even though Earth's angular momentum remains unchanged (ignoring the small secular deceleration), angular velocity of the Earth will change when its moment of inertia along the rotational axis changes. This situation is a slight modification from Equation 13, as follows.

$$\frac{\Delta LOD}{LOD} = -m_3 = \frac{\Delta I_{33}}{C}$$

where ΔLOD is the excessive amount of LOD, and related are z-components of Earth's spin angular velocity and inertia tensor; $\omega_3 = (1 + m_3)\omega_0$ and $I_{33} = C + \Delta I_{33}$ respectively. Accumulation of ΔLOD lead to delay of UT1, and this relation can be expressed as

$$UT1 - UTC = - \sum_{days} \Delta LOD = - \int \frac{\Delta LOD}{LOD} dt$$

As ΔLOD due to tidal deformation can be expected, tidal periodicities exist in the ΔLOD spectrum. The ΔLOD associated with the change in the moment of inertia due to the zonal body tide was early studied by Woolard [39] and later by Yoder and Merriam [40-41]. Following them, the expression for ΔLOD due to elastic body tidal deformation is written as

$$\Delta LOD = -86400s \times \frac{k_2 M R_e^5 \Delta r}{C r^4} \sqrt{\frac{5}{\pi}} (1 - 3 \sin^2 \delta) \quad (16)$$

where k_2 is tidal Love number, M is the mass of tide raising body (Moon or Sun), R_e is the mean radius of the Earth, r is the distance to the body from the Earth, δ is the declination of the body, and Δr is the deviation of r from its average value. As will be described below, atmospheric and oceanic contributions to ΔLOD exist in large amount, so that calculated body tidal ΔLOD alone does not suffice to explain observational data.

In Figure 15, the excessive LOD time series (IERS EOP 08 C04 – simply C04) since 1981 is shown (top). The curve of variation with period longer than 2000 days is superposed with the data (top). Below three different period band components are separately shown (period between 500 and 2000 days, between 100 and 500 days, and less than 100 days). The amplitude of interannual variation is about 0.3 millisecond or less. Decomposition of the time series of Figure 15, was done by simple spectral windowing. It is interesting to note that the present overall trend of LOD shown in this figure is decreasing, which is the reverse of secular increase of LOD due to tidal dissipation. This is ascribed to certain geophysical processes in the Earth's core and mantle, such as geodynamo. Recent fast retreat of glaciers might be related as well.

The ΔLOD time series show clear annual, semiannual, monthly signals and other minor ones distributed over wide spectral range.

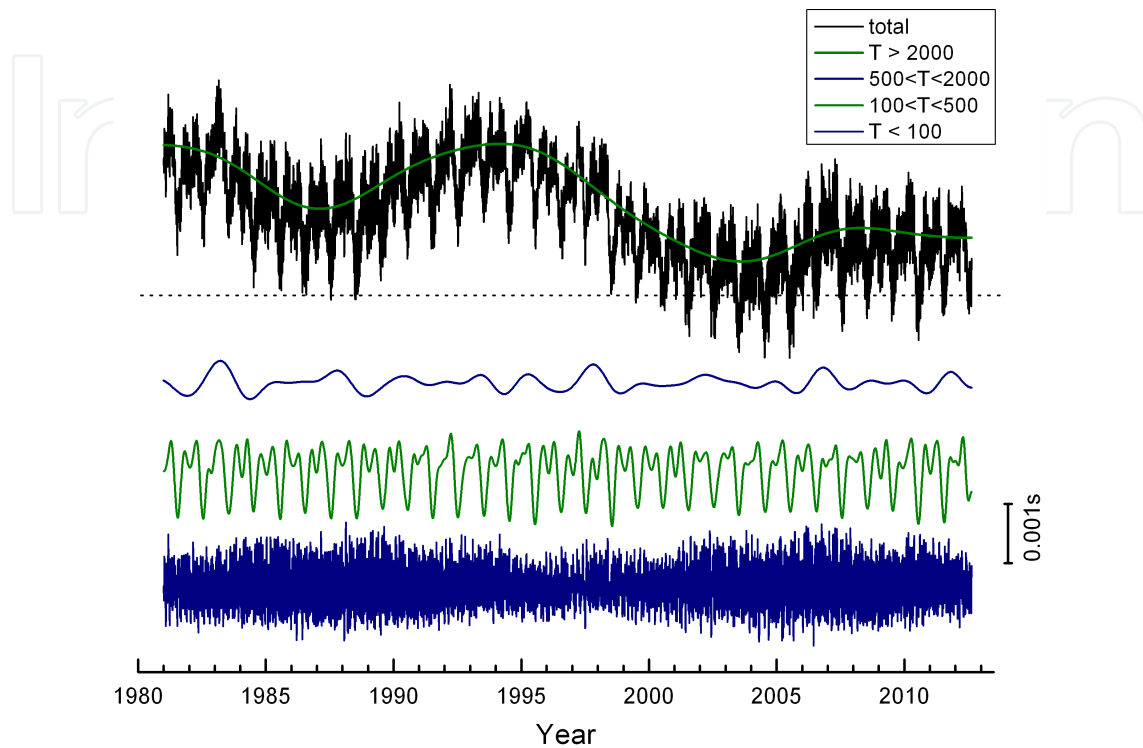


Figure 15. Variation of LOD since 1981. From the top, excessive LOD time series with its decadal trend, components of period between 500 and 2000 days, between 100 and 500 days, and less than 100 days. The dotted line is zero level. Three lower graphs are shifted for convenience, but all are in same vertical scale.

Fourier spectra of the LOD time series are shown in Figure 16. The two graphs are equivalent but differ in representation only by the axis (frequency/period). To identify the long period component accurately, calculation for these spectra was done through integration of the time series multiplied by sine/cosine sinusoid of each frequency not by using fast Fourier transform. Four largest peaks are labeled as f1, f2, f3, and f4. The two peaks f2 and f3 are annual and semi-annual ones. The period of f4 is 13.7 days. As shown in lower spectrum, the period of peak f1 is spread over a wide range. Spectral peak of f1 is split by a few minor peaks. The main period of f1 peak is about 6905 days. Including the second largest peak at 4650 days, total width of half amplitude is about 5290 days between 4150 and 9440 days. This broad peak of f1 is generally believed to be associated with geomagnetic field generation in the Earth's core and 18.6 year precession of lunar orbital plane. Peak sequence in power is follows; f1 (decadal), f4 (fortnightly), f2 (annual), f3 (semiannual). Two spectral peaks of which periods are 27.6 and 9.13 days are noticed as next large ones. There exist other smaller peaks, including 14.8 day period one.

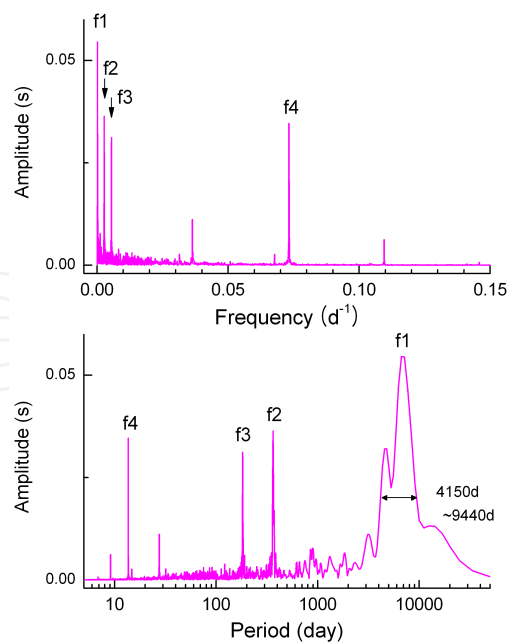


Figure 16. Fourier amplitude spectra of the LOD time series shown in Figure 15.

In Figure 17, two short period band components of ΔLOD time series of Figure 15 are shown again for three year time span between 2000 and 2003 with the body tidal ΔLOD calculated by using Equation 16. Both the data and calculated body tidal ΔLOD in Figure 17 well show annual, semiannual, monthly and fortnightly periodic components. However, there are certain differences between the two. First, the fortnightly periodicity is not quite certain in the calculated body tidal ΔLOD , and neither is the semiannual one. Moreover, annual and semiannual signals are much stronger in the data than the calculated ones. Evidently this discrepancy should be ascribed to other effects than body tidal perturbation.

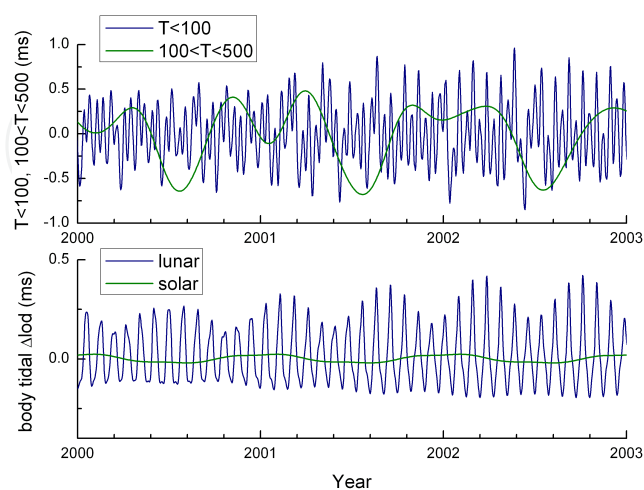


Figure 17. Observed LOD variation of period less than 500 days (above) and calculated LOD variation due to body tidal perturbation (below).

The effects of global zonal wind pattern fluctuation and ocean tidal angular momentum variation on UT and LOD had been suspected [1-2]. These effects were confirmed later [42-47], and the zonal wind pattern change was found to do the dominant role. Hydrological mass transport is also identified to have effect on annual and semiannual variation. Ocean tidal effect is found to be the main cause for diurnal and semidiurnal variation in LOD. These investigations became possible due to recent accurate ocean tide modeling and atmospheric angular momentum data. In Figure 18, both observed data and modeled LOD time series are shown after Chen *et al.* [46].

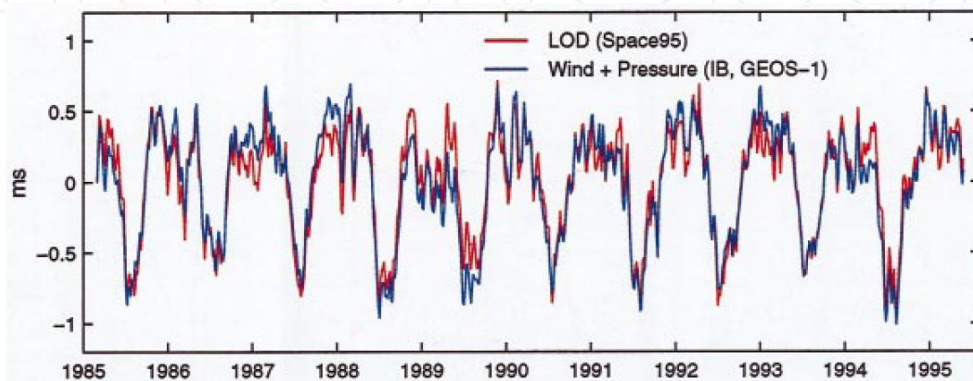


Figure 18. Observation and model for LOD; Space95 time series and calculated LOD excitation by atmospheric flow and pressure (after Chen *et al.* [46])

Position of Earth's rotational pole on the Earth's surface is slowly but ceaselessly changing. Average position of pole between 1900 and 1905 was taken as the reference point of geodetic latitude and longitude. This position was formerly called Conventional International Origin, and now is renamed as Reference Pole. Polar motion is referred to the offset of Earth's rotational pole with respect to the Reference Pole. The main feature of polar motion during the past century can be summarized as; (i) slow drift along the direction between West 70 and 80°, (ii) Chandler wobble of amplitude about 210 (150 – 280) milliarcsec, and (iii) annual wobble of amplitude about 120 (90-150) milliarcsec. There also exist various components of smaller amplitude, among which is semiannual component.

In the former section, free and forced wobble of rotating rigid Earth was considered. It is rather elaborate to calculate Chandler wobble period for more realistic Earth model. Chandler wobble frequency of elastic and oceanless Earth was acquired as $\Omega = \frac{C - A - D}{A + D} \omega_0$, where $D = kR_e^5 \omega_0^2 / 3G$ [48]. Corresponding period is 446.2 days. Assuming equilibrium pole tide, the estimate was adjusted into 425.5 day [48]. Its recent theoretical estimate is 423.5 days [49]. Among many observational estimates for Chandler period and Q value, 433.0 days and 179 are the most representative ones [50].

Three other modes of Earth rotation exist due to the core of the Earth as followings; free core nutation, free inner core nutation, and inner core wobble. For an observer on the Earth's surface, free core nutation and free inner core nutation are retrograde motions having their

periods approximately one day, therefore these two are called nearly diurnal free wobbles [50-52]. For an observer in space, the periods of these two are much longer; about 430 and 1000 days. Inner core wobble period has been estimated as 900-2500 days [53-54], however its existence has not yet been reported [55].

Formerly, perturbation in the Earth's angular velocity and pole offset were considered to be the same with only difference in their directional notation, *i.e.*, $(m_1, m_2) = (x_p, -y_p)$. In fact, the relation $(m_1, m_2) \simeq (x_p, -y_p)$ approximately holds for long period components. Their exact relation is the following; $m_c = p_c - \frac{i}{\omega_0} \frac{d p_c}{dt}$, where $m_c = m_1 + i m_2$ and $p_c = x_p - i y_p$. Celestial Intermediate Pole (CIP), denoted by x_p and y_p , is the one to be used for TRF-CRF conversion. For more detail, see [5] or related references cited therein. It is noted that, for dynamical effects such as pole tide, values of (m_1, m_2) should be referenced to x_3 -principal axis of the Earth. Since both the x_p and y_p are small, the transformation matrix for polar motion necessary for CRF to TRF transformation can be written as $R_{pm} \simeq R_2(-x_p)R_1(-y_p) \simeq R_1(-y_p)R_2(-x_p)$ as first order approximation (see Appendix for more detail).

Recent polar motion is illustrated in Figure 19. The graphs are based on the polar motion dataset of IERS EOP 08 C04.

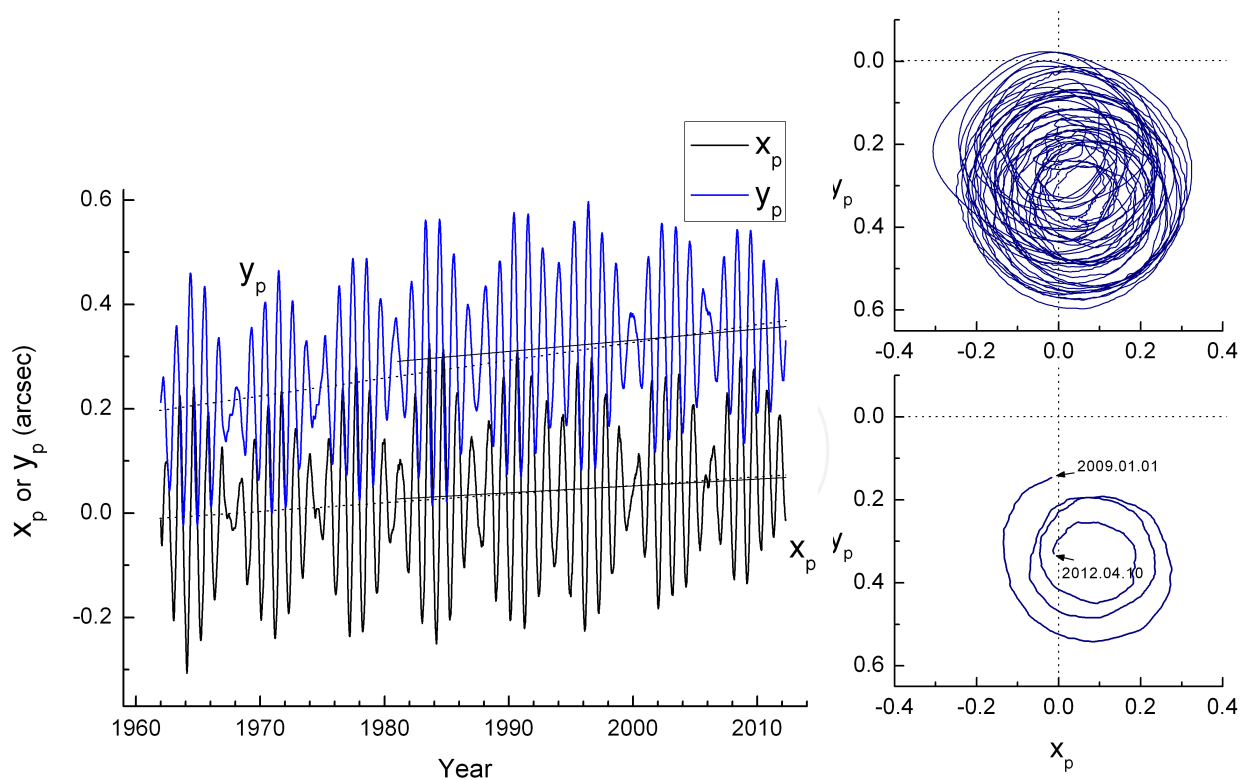


Figure 19. Polar motion; two components x_p and y_p of polar motion since 1962. Least square fit lines are drawn for whole time span and latter time span since 1981 (left). Two each (long/short) locus of pole position with respect to Reference Pole are drawn (right).

From the lines fitted with least square error in Figure 19, the linear trend of recent polar motion is read as 8.1 cm/yr along W 59° for short time span since 1981 and 12 cm/yr along W 64° for long time span since 1962. Some former estimates of the linear trend in polar motion were 10.3 cm/yr along W 75° [56], 10.9 cm/yr along W 79°[57], and 10.3 cm/yr along W 76°[58]. Therefore, recent pole drift is comparatively slower and tilted by several degrees to the East. This might be associated with the recent rapid glacier melting in Greenland.

Two main components of polar motion are Chandler and annual wobbles. Other known minor components are semi-annual, semi-Chandler, Markowitz, *etc.* There have been investigations to identify different components of polar motion and their characteristics (see, for example, [59-61]). For the polar motion time series as shown in Figure 19, two spectra were acquired by using fast Fourier transform and maximum entropy method, and are illustrated in Figure 20. Minor peaks p1, p2, and p3 in the spectrum are previously known components; semi-annual, semi-Chandler, and 300-day period ones. The 300-day period component is regarded to be associated with atmospheric phenomena [60]. Existence of 490-day period component (peak p4) in polar motion was suggested after numerical experiment and evidence of same periodicity in other geophysical phenomena [62].

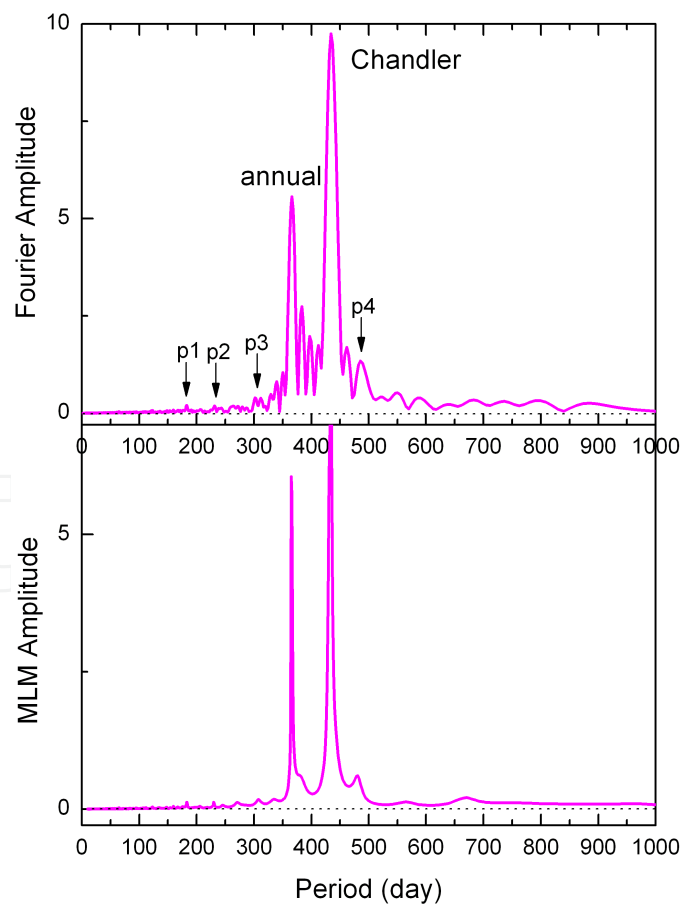


Figure 20. Fourier and Maximum likelihood amplitude spectra of recent polar motion shown in Figure 19.

In Figure 21, different period band polar motion components are shown. The each separate time series are: x_p with long time trend, long period, Chandler wobble, annual wobble, and short period components, which were acquired by spectral windowings.

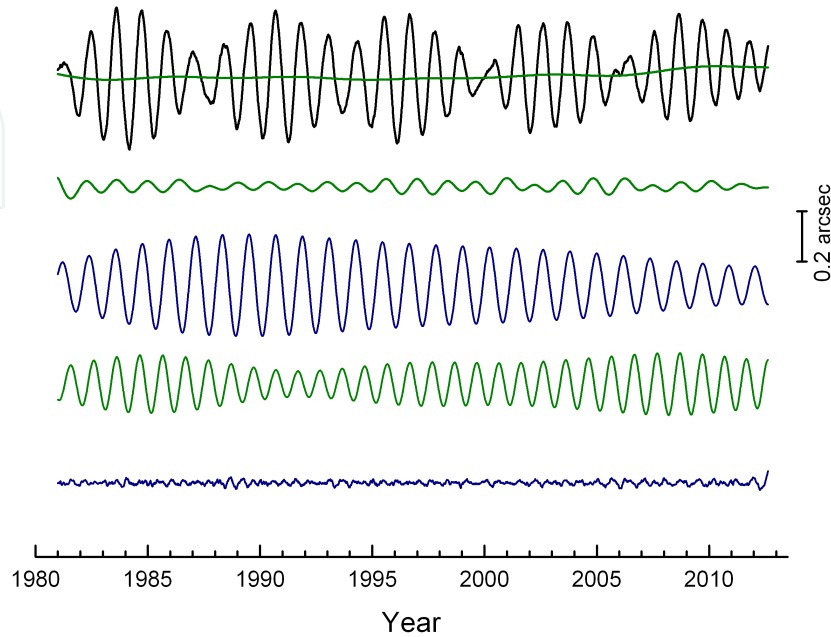


Figure 21. Polar motion and its components of different period ranges. From above, original total data with its trend, long period, Chandler, annual, short period components. (x_p of C04 between 1981 and 2012 summer)

Variability of the Chandler wobble period has been assumed, because of observationally derived period of Chandlerian motion showed such instability. However, it was asserted that the period of Chandler wobble should be a constant, which is determined by the whole mechanical structure of the Earth [63]. The apparent variation of Chandler period is caused by variable excitation.

While Equation 14 relates excitation function and polar motion of rigid Earth, similar equation for the real Earth is acquired by replacing the Chandler frequency with the following one;

$\Omega = \frac{\omega_0}{433} \left(1 + \frac{i}{2Q}\right)$. Considering the relation $m_c = p_c - \frac{i}{\omega_0} \frac{d p_c}{dt}$ together, the excitation function for the real Earth can be conveniently expressed in frequency domain as follows.

$$\Phi(\omega) = \frac{\omega_0}{\omega_0 + \omega} \frac{\Omega - \omega}{\Omega} M(\omega) = \frac{\Omega - \omega}{\Omega} P(\omega) \quad (17)$$

where $\Phi(\omega)$, $M(\omega)$, and $P(\omega)$ are the Fourier transform pairs of $\phi_c(t)$, $m_c(t)$ and $p_c(t)$ respectively. In Figure 22, both real and imaginary parts of the calculated excitation function $\phi_c(t)$ are illustrated (Q value is taken as 180) together with polar motion.

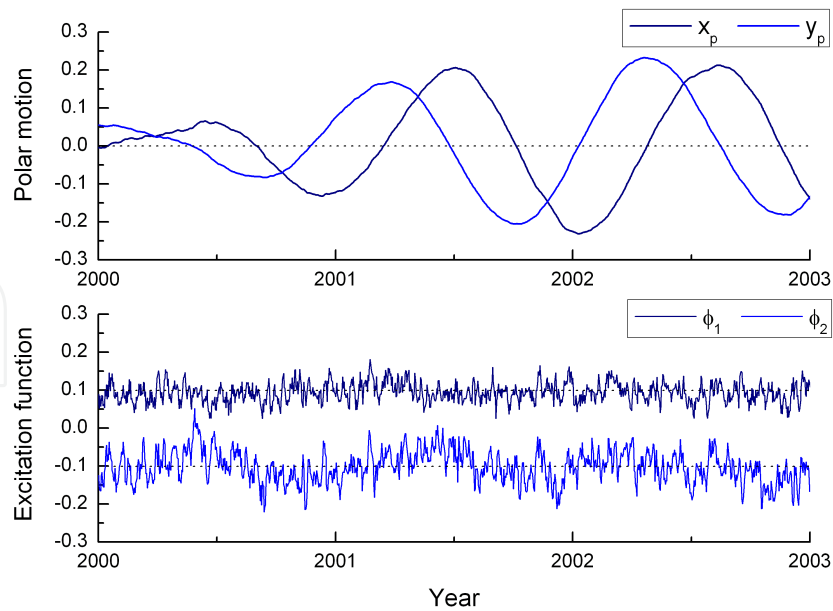


Figure 22. Polar motion and excitation function between year 2000 and 2003 [unit: arcsec]. Polar motion components are delineated, and excitation function is calculated by using Equation 17. Two components of excitation function are shifted by ± 0.1 arcsec for convenience.

Excitation mechanism of Chandler wobble has been investigated for a long time, and, nowadays, fluid sphere forcing at the Earth’s surface is regarded to be the main source [64-71]. Annual wobble exists with amplitude slightly smaller than Chandler wobble. Much smaller semi-annual wobble also exists. Major part of annual and semiannual wobble should be due to atmospheric excitation. Eurasian continent, North Atlantic, North Pacific, and southern oceans were found to be large sources of the atmospheric excitation for annual wobble. Explanation for polar motion excitation is sought by simultaneously considering effects from wind, atmospheric pressure, ocean current, ocean bottom pressure. In Table 3, annual and semiannual excitation components are listed after Gross *et al.* [67]. Table 3 is consisted of prograde components only, however, retrograde ones were reported of the same order of magnitude.

Excitation	Annual		Semiannual		Terannual	
	Amp (m.a.s)	Phase (deg)	Amp (m.a.s.)	Phase (deg)	Amp (m.a.s.)	Phase (deg)
Wind	2.97	-35	0.36	72	0.14	125
Atmo. pressure	15.12	-102	2.60	47	1.29	144
Ocean current	2.31	40	1.32	176	0.81	146
O.B. pressure	3.45	63	0.77	134	0.71	120
Total	12.23	-78	2.90	90	2.90	138
Observed	14.52	-63	5.67	108	2.22	109

Table 3. Calculated and observed polar motion excitation of annual, semiannual, and terannual components (prograde components only) after Gross *et al.* [67] (m.a.s. = milliarcsec, Atmo. = Atmospheric, O.B. = Ocean Bottom).

Oceanic excitation of periods between daily to seasonal has been recognized. Atmospheric excitation is found more important for LOD, and both oceanic/atmospheric effects are found important for polar motion [72-73]. For subdaily polar motion, ocean effect is known to dominate [72]. Zhou *et al.* found better assessment of the atmospheric excitation by considering the Earth's surface topography [74]. Nowadays, daily and sub-daily variations of LOD and polar motion are observed and modeled in submicrosecond and microarcsec levels; for example, see [75-76]. However, observation and model do not match completely in all spectral range both for LOD and polar motion. This is due to insufficient coverage of observational data for atmospheric/oceanic/hydrologic excitations [77-79]. Jin *et al.* analyzed hydrologic/oceanic excitation to polar motion by analyzing GRACE data [77, 79]. Better explanation for annual and semiannual LOD variation was found by GRACE+SLR analysis for the Earth's principal moment of inertia [78].

6. Time system and coordinate transformation between TRF and CRF

Universal Time (UT) is the hour angle of the apparent Sun from the Greenwich meridian. Greenwich Sidereal Time is the hour angle of the vernal equinox from the Greenwich meridian. UT1 is corrected of tiny daily oscillation of UT, which is due to the pole offset. Terrestrial Time (TT), also called as Terrestrial Dynamical Time (TDT), is uniform time in Earth based coordinate frame. International Atomic Time (TAI) is attained by atomic clocks, and has a constant time difference with TT. Coordinated Universal Time (UTC) is based on TAI and maintained close to UT1 within 0.9 second difference by assigning leap seconds. The difference between UT1 from UTC is dUT1.

$$\begin{aligned} TT &= TAI + 32.184s \\ UTC &= TAI - (\text{sum of leap seconds}) \\ UT1 &= UTC + dUT1 \end{aligned} \quad (18)$$

Two Earth centered coordinate frames in common use are celestial reference frame (CRF) and terrestrial reference frame (TRF). For most civilian purposes, TRF is the one to use, while CRF is convenient in astronomy. Due to the spin rotation of the Earth, transformation between TRF and CRF is needed. As summarized in former sections, not only the simple rotation angle specified as Greenwich sidereal time, but also corrections due to the precession, nutation and polar motion are necessary.

Coordinate transformation from CRF to TRF can be expressed as follows (IAU 2000A).

$$\begin{bmatrix} x_1 \\ x_2 \\ x_3 \end{bmatrix}_{\text{Terrestrial}} = R_{pm} R_{spin} R_{nut} R_{prec} \begin{bmatrix} x_1 \\ x_2 \\ x_3 \end{bmatrix}_{\text{Celestial}} \quad (19)$$

where R_{prec} , R_{nut} , R_{spin} , and R_{pm} represent the rotation matrices corresponding to the precession, nutation, and spin with time passage, and polar motion.

$$R_{prec} = R_3(-z)R_2(\theta)R_3(-\zeta)$$

$$R_{nut} = R_1(-\varepsilon - \Delta\varepsilon)R_3(-\Delta\psi)R_1(\varepsilon)$$

$$R_{spin} = R_3(GAST)$$

$$R_{pm} = R_2(-x_p)R_1(-y_p)$$

Explanations for GAST (Greenwich Apparent Sidereal Time) and Time System are given below.

$$GAST = GMST + \Delta\psi \cos\varepsilon \text{ (in radian)}$$

where GMST is the Greenwich Mean Sidereal Time in radian, and $\Delta\psi \cos\varepsilon$ is the nutation of right ascension.

$$GMST = GMST_0 + \alpha UT1 \text{ (in second)}$$

GMST₀ is given as

$$GMST_0 = 24110.54841 + 8640184.812866T + 0.093104T^2 - 6.2 \times 10^{-6}T^3 \text{ (in second)}$$

where T is time in Julian century (36525 days) from J2000.0 to 0h UT1 of the day. Julian day conversion from calendar date is preferred to calculate T (for the conversion, see [4]). α is the factor for sidereal time conversion.

$$\alpha = 1.002737909350795 + 5.9006 \times 10^{-11}T - 5.9 \times 10^{-15}T^2$$

Brief description for the transformation between TRF and CRF adopted by the IAU 2006 is given here.

$$\begin{bmatrix} x_1 \\ x_2 \\ x_3 \end{bmatrix}_{\text{Terrestrial}} = R_{pm}R_{spin}R_{prec+nut} \begin{bmatrix} x_1 \\ x_2 \\ x_3 \end{bmatrix}_{\text{Celestial}} \quad (20)$$

where $R_{prec+nut}$, R_{spin} , and R_{pm} are defined as follows.

$$R_{prec+nut} = \begin{pmatrix} 1-bX^2 & -bXY & -X \\ -bXY & 1-bY^2 & -Y \\ X & Y & 1-b(X^2+Y^2) \end{pmatrix}$$

$$R_{spin} = R_3(\theta - s + s')$$

$$R_{pm} = R_1(-y_p)R_2(-x_p)R_3\left(\frac{x_p y_p}{2}\right)$$

For definitions of θ , s , and s' , see [7] or other references cited therein.

7. Conclusion

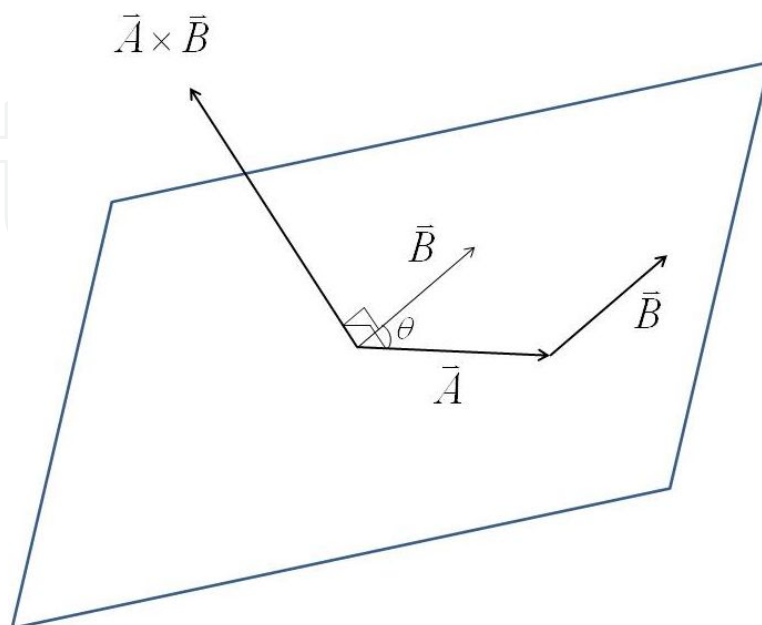
Different kinds of variations in the Earth's spin rotation are classified and explained. With emphasis on basic principles, each aspects of Earth rotation; precession, nutation, secular deceleration, LOD variation, and polar motion are described concisely. Euler equation and its formal solution for rigid Earth are included with their modifications for real Earth. Transformation between CRF and TRF is summarized. For convenience, underlying mechanics and mathematics are briefly summarized in Appendix.

Appendix: Summary of pre-requisite mechanics and mathematics

In this appendix, certain basic physical and mathematical concepts needed for understanding the content of this chapter are explained.

A1. Vector algebra

A vector in three dimension can be written as $\vec{A} = \hat{i}A_1 + \hat{j}A_2 + \hat{k}A_3$, where \hat{i} , \hat{j} , and \hat{k} are the unit vectors in each directions. The unit vectors are taken to be cyclic in right handed coordinate system. Magnitude of a vector is defined as $A = |\vec{A}| = \sqrt{A_1^2 + A_2^2 + A_3^2}$. Inner product of two vectors is defined as $\vec{A} \cdot \vec{B} = A_1B_1 + A_2B_2 + A_3B_3$. Cross product of two vectors is defined as $\vec{A} \times \vec{B} = \hat{i}(A_2B_3 - A_3B_2) + \hat{j}(A_3B_1 - A_1B_3) + \hat{k}(A_1B_2 - A_2B_1)$. The magnitudes of the two products are $|\vec{A} \cdot \vec{B}| = |\vec{A}| |\vec{B}| \cos\theta$ and $|\vec{A} \times \vec{B}| = |\vec{A}| |\vec{B}| \sin\theta$, where θ is the angle between \vec{A} and \vec{B} .



One immediately following fact is that cross product of a vector with itself or any other parallel ones vanish; $\vec{A} \times \vec{A} = 0$. A triple cross product can be composed as; $\vec{A} \times (\vec{B} \times \vec{C}) = (\vec{A} \cdot \vec{C})\vec{B} - (\vec{A} \cdot \vec{B})\vec{C}$.

A2. Harmonic oscillator

Oscillation and wave are two phenomena of fundamental importance in science and technology. Wave can be regarded as succession of harmonic oscillation in space. Mechanical oscillation exists in a system, where restoring force is accompanied to a deformation from equilibrium. Theory of one-dimensional harmonic oscillator is summarized below.

Linear restoring force and harmonic motion

For a displacement x of a spring from its equilibrium position, restoring force is exerted by the spring and can be written as $f = -kx$. Equation of motion for such system can be written as

$m \frac{d^2x}{dt^2} = f = -kx$. The solution for this equation is found as $x = A \cos \omega_1 t + B \sin \omega_1 t$, where the

angular frequency and period are given as $\omega_1 = \sqrt{\frac{k}{m}}$ and $T_1 = 2\pi / \omega_1$.

Slightly damped harmonic motion

Assuming existence of a small viscous dragging force, which varies linearly with the velocity, the equation of motion is given as $m \frac{d^2x}{dt^2} = -kx - c \frac{dx}{dt}$. The solution is found as exponentially decaying oscillation.

$x(t) = Ae^{-\gamma t} \cos(\omega_2 t - \theta)$, where $\gamma = \frac{c}{2m}$ and $\omega_2 = \sqrt{\omega_1^2 - \gamma^2}$.

Forced harmonic motion

When a damped harmonic oscillator is driven by external periodic force of angular frequency

ω_d , its equation of motion can be written as $m \frac{d^2x}{dt^2} = -kx - c \frac{dx}{dt} + Be^{i\omega_d t}$, and the solution is

found as $x(t) = Ae^{i(\omega_d t - \theta)}$, where the amplitude and phase angle are given as

$$A = \frac{B/m}{[(\omega_1^2 - \omega_d^2)^2 + c^2 \omega_d^2 / m^2]^{1/2}} \text{ and } \tan \theta = \frac{c \omega_d / m}{\omega_1^2 - \omega_d^2}.$$

Euler formula

The convenient complex notation $e^{i\alpha} = \cos \alpha + i \sin \alpha$, so called Euler formula, can be verified by using three series expansions as follows.

$$\cos \alpha = 1 - \frac{\alpha^2}{2!} + \frac{\alpha^4}{4!} - \frac{\alpha^6}{6!} + \dots, \quad \sin \alpha = \alpha - \frac{\alpha^3}{3!} + \frac{\alpha^5}{5!} - \frac{\alpha^7}{7!} + \dots, \quad e^\beta = 1 + \beta + \frac{\beta^2}{2!} + \frac{\beta^3}{3!} + \frac{\beta^4}{4!} + \dots$$

Substitution $\beta = i\alpha$ into the third expression leads to Euler formula.

$$e^{i\alpha} = 1 + i\alpha + \frac{(i\alpha)^2}{2!} + \frac{(i\alpha)^3}{3!} + \frac{(i\alpha)^4}{4!} + \dots = 1 - \frac{\alpha^2}{2!} + \frac{\alpha^4}{4!} + \dots + i(\alpha - \frac{\alpha^3}{3!} + \frac{\alpha^5}{5!} - \dots) = \cos\alpha + i\sin\alpha$$

A3. Rotational mechanics

Torque and angular momentum

Torque $\vec{\tau}$ exerted by a force \vec{f} acting at position \vec{r} is defined as $\vec{\tau} = \vec{r} \times \vec{f}$. Angular momentum \vec{l} of a single moving body of mass m and velocity \vec{v} at position \vec{r} is defined as $\vec{l} = \vec{r} \times m\vec{v}$. Torque applied to a system results in change in its angular momentum. This relation is stated as

$\vec{\tau} = \frac{d\vec{l}}{dt}$, which can be readily verified by time differentiation on \vec{l} ;

$$\frac{d\vec{l}}{dt} = \frac{d}{dt}(\vec{r} \times m\vec{v}) = \vec{v} \times m\vec{v} + \vec{r} \times m \frac{d\vec{v}}{dt} = \vec{r} \times m\vec{a} = \vec{r} \times \vec{f} = \vec{\tau}.$$

Angular velocity

For a simple rotation occurring in a plane, angular velocity is defined as time rate of rotation angle $\omega = \frac{d\theta}{dt}$. The speed due to rotation is given as $v = \omega r$, where r is the radius from the rotation axis. It should be kept in mind that rotational motion (velocity) is perpendicular to the rotating axis (angular velocity vector). For a three dimensional rotation, angular velocity vector $\vec{\omega}$ is defined by its three components; $\vec{\omega} = \omega_1 \hat{e}_1 + \omega_2 \hat{e}_2 + \omega_3 \hat{e}_3$. Velocity \vec{v} of any point \vec{r} in the rotating body is given as $\vec{v} = \vec{\omega} \times \vec{r}$.

Inertia tensor

Consider the angular momentum of a rotating rigid body. Write mass element dm at position \vec{r} , then its linear momentum is given as $\vec{v}dm = \vec{\omega} \times \vec{r}dm$. Total angular momentum is expressed as $\vec{L} = \int \vec{r} \times \vec{v}dm = \int \vec{r} \times (\vec{\omega} \times \vec{r})dm = \int (r^2\vec{\omega} - (\vec{r} \cdot \vec{\omega})\vec{r})dm$. Three components of the total angular momentum are given as follows.

$$L_1 = \int (r^2\omega_1 - (x_1\omega_1 + x_2\omega_2 + x_3\omega_3)x_1)dm$$

$$L_2 = \int (r^2\omega_2 - (x_1\omega_1 + x_2\omega_2 + x_3\omega_3)x_2)dm$$

$$L_3 = \int (r^2\omega_3 - (x_1\omega_1 + x_2\omega_2 + x_3\omega_3)x_3)dm$$

These can be rewritten as follows.

$$L_1 = I_{11}\omega_1 + I_{12}\omega_2 + I_{13}\omega_3, \quad L_2 = I_{21}\omega_1 + I_{22}\omega_2 + I_{23}\omega_3, \quad L_3 = I_{31}\omega_1 + I_{32}\omega_2 + I_{33}\omega_3$$

where components of inertia tensor I_{ij} are defined as elements of the following matrix.

$$[I_{ij}] = \begin{bmatrix} I_{11} & I_{12} & I_{13} \\ I_{21} & I_{22} & I_{23} \\ I_{31} & I_{32} & I_{33} \end{bmatrix} = \begin{bmatrix} \int (x_2^2 + x_3^2) dm & -\int x_1 x_2 dm & -\int x_1 x_3 dm \\ -\int x_2 x_1 dm & \int (x_3^2 + x_1^2) dm & -\int x_2 x_3 dm \\ -\int x_3 x_1 dm & -\int x_3 x_2 dm & \int (x_1^2 + x_2^2) dm \end{bmatrix}$$

Rotational kinetic energy

Kinetic energy of any moving body is defined as $T = \int \frac{1}{2} v^2 dm$. The kinetic energy T of a rotating body is given as; $\int \frac{1}{2} v^2 dm = \frac{1}{2} \int \vec{v} \cdot (\vec{\omega} \times \vec{r}) dm = \frac{1}{2} \vec{\omega} \cdot \int (\vec{r} \times \vec{v}) dm = \frac{1}{2} \vec{\omega} \cdot \vec{L}$. Therefore, $T = \int \frac{1}{2} v^2 dm = \frac{1}{2} \vec{\omega} \cdot \vec{L}$ or $T = \frac{1}{2} \sum_{i=1}^3 \sum_{j=1}^3 I_{ij} \omega_i \omega_j$.

Principal axis

For any rigid body, set of three particular orthogonal axes (called principal axes) exists. If body frame of reference coincides with those principal axes, only diagonal component of inertia tensor remain as nonzero.

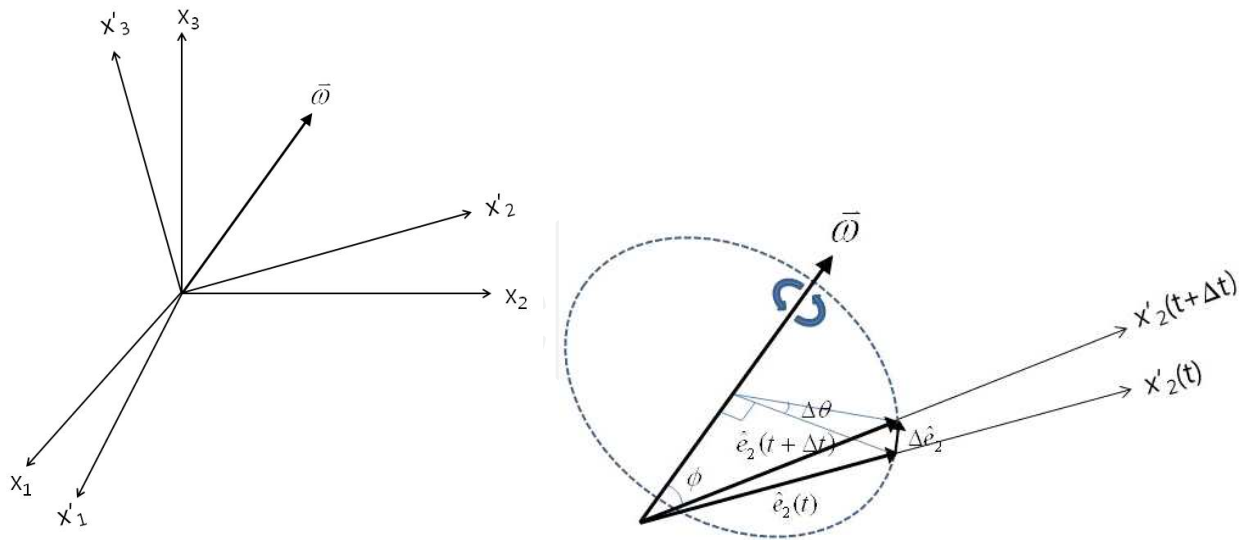
$$[I_{ij}] = \begin{bmatrix} I_{11} & 0 & 0 \\ 0 & I_{22} & 0 \\ 0 & 0 & I_{33} \end{bmatrix}$$

When a body rotates along its principal axis, its motion may be regarded as a simple planar rotation. As an example, suppose a rotation of a body along its principal axis x_3 , then, the angular momentum and rotational kinetic energy are simply given as $L = L_3 = I_3 \omega_3$ and

$T = \frac{1}{2} I_3 \omega_3^2$. It is noted that set of principal axis and principal moment of inertia can be determined from the following condition; $L_i = \sum_{j=1}^3 I_{ij} \omega_j = I_{i\lambda} \omega_i$.

Rotating coordinate frame

Two coordinate frames of common origin, one stationary in space and the other rotating with angular velocity $\vec{\omega}$, are described in the figure (left). On the right figure, the unit vector \hat{e}_2' at time t and $t + \Delta t$ are shown. The change $\Delta \hat{e}_2'$ in the unit vector \hat{e}_2' is $\Delta \hat{e}_2' = \hat{e}_2'(t + \Delta t) - \hat{e}_2'(t) \approx \sin \phi \Delta \theta \hat{n} = \sin \phi \omega \Delta t \hat{n}$. Here the direction of $\Delta \hat{e}_2'$ is denoted by a unit vector \hat{n} , which is parallel to $\vec{\omega} \times \hat{e}_2'$. Therefore the time derivative of \hat{e}_2' is expressed as $\frac{d\hat{e}_2'}{dt} = \vec{\omega} \times \hat{e}_2'$. Likewise time derivatives of \hat{e}_3' and \hat{e}_1' are found as $\frac{d\hat{e}_3'}{dt} = \vec{\omega} \times \hat{e}_3'$ and $\frac{d\hat{e}_1'}{dt} = \vec{\omega} \times \hat{e}_1'$. Write the coordinates of a position vector \vec{r} in the two reference frame as (x_1, x_2, x_3) and (x_1', x_2', x_3') . Then we have $\vec{r} = x_1 \hat{e}_1 + x_2 \hat{e}_2 + x_3 \hat{e}_3 = x_1' \hat{e}_1' + x_2' \hat{e}_2' + x_3' \hat{e}_3' = \vec{r}'$.



The velocity vector can be written as $\frac{dx_1}{dt} \hat{e}_1 + \frac{dx_2}{dt} \hat{e}_2 + \frac{dx_3}{dt} \hat{e}_3$ or equivalently as $\frac{dx_1}{dt} \hat{e}_1 + \frac{dx_2}{dt} \hat{e}_2 + \frac{dx_3}{dt} \hat{e}_3 + x_1 \frac{d\hat{e}_1}{dt} + x_2 \frac{d\hat{e}_2}{dt} + x_3 \frac{d\hat{e}_3}{dt}$. Since the time derivatives of unit vectors are $\frac{d\hat{e}_i}{dt} = \bar{\omega} \times \hat{e}_i$, the three terms $x_1 \frac{d\hat{e}_1}{dt} + x_2 \frac{d\hat{e}_2}{dt} + x_3 \frac{d\hat{e}_3}{dt}$ can be rewritten as $\bar{\omega} \times (x_1 \hat{e}_1 + x_2 \hat{e}_2 + x_3 \hat{e}_3) = \bar{\omega} \times \hat{r}$. Then the relation is expressed as

$$\vec{v} = \dot{\vec{r}} + \bar{\omega} \times \vec{r}$$

This time derivative expression derived for position vector in rotating frame can be extended to other vectors.

$$\left. \frac{d}{dt} \right|_{inertial} = \left. \frac{d}{dt} \right|_{body} + \bar{\omega} \times$$

A4. Fourier series and fourier transform

A periodic function $f(t)$ of period T can be represented by its Fourier series.

$$f(t) = \frac{a_0}{2} + \sum_{n=1}^{\infty} \left(a_n \cos \frac{2\pi n t}{T} + b_n \sin \frac{2\pi n t}{T} \right)$$

where the coefficients are defined as follows.

$$a_n = \frac{2}{T} \int_{-T/2}^{T/2} f(t') \cos \frac{2\pi n t'}{T} dt' \text{ and } b_n = \frac{2}{T} \int_{-T/2}^{T/2} f(t') \sin \frac{2\pi n t'}{T} dt'$$

Equivalent series for $f(t)$ can be written as

$$f(t) = \sum_{n=-\infty}^{\infty} c_n \exp(i \frac{2\pi n}{T} t) \text{ with coefficient } c_n = \frac{1}{T} \int_{-T/2}^{T/2} f(t') \exp(-i \frac{2\pi n}{T} t') dt'$$

As can be derived from above expression by taking period T as infinity, Fourier transform $F(\omega)$ of arbitrary well-behaved function $f(t)$ is defined as follows.

$$F(\omega) = \frac{1}{\sqrt{2\pi}} \int_{-\infty}^{\infty} f(t) \exp(-i\omega t) dt$$

The inverse transform is given as

$$f(t) = \frac{1}{\sqrt{2\pi}} \int_{-\infty}^{\infty} F(\omega) \exp(i\omega t) d\omega$$

Both Fourier series and Fourier transform are widely used. While Fourier transform is more convenient in theoretical development, quite often discrete Fourier transform is used for calculation in practice. For a given sequence $f[n]$, its discrete Fourier transform is defined as follows.

$$F[k] = \frac{1}{\sqrt{N}} \sum_{n=0}^{N-1} f[n] \exp(-i \frac{2\pi}{N} nk)$$

The inverse transform is given as

$$f[n] = \frac{1}{\sqrt{N}} \sum_{k=0}^{N-1} F[k] \exp(i \frac{2\pi}{N} nk)$$

Both $f[n]$ and $F[k]$ are periodic sequences such that $f[n] = f[N + n]$ and $F[k] = F[N + k]$. Fast Fourier transform is an algorithm to evaluate discrete Fourier transform by minimum number of calculations.

A5. Rotation matrix

Coordinate transformation due to a rotation along one of reference axis by an angle θ is represented as follows.

$$R_1(\theta) = \begin{bmatrix} 1 & 0 & 0 \\ 0 & \cos\theta & \sin\theta \\ 0 & -\sin\theta & \cos\theta \end{bmatrix}, R_2(\theta) = \begin{bmatrix} \cos\theta & 0 & -\sin\theta \\ 0 & 1 & 0 \\ \sin\theta & 0 & \cos\theta \end{bmatrix}, R_3(\theta) = \begin{bmatrix} \cos\theta & \sin\theta & 0 \\ -\sin\theta & \cos\theta & 0 \\ 0 & 0 & 1 \end{bmatrix}$$

Any two different axis rotations of finite angles do not commute, unless the angles are infinitesimal. For polar motion, the transformation matrix is given as $R_{pm} \simeq R_2(-x_p)R_1(-y_p) \simeq R_1(-y_p)R_2(-x_p)$ for first order approximation. Retaining second order terms, the transformation matrix is given as

$$R_{pm} \simeq R_2(-x_p)R_1(-y_p)R_3(-\frac{x_p y_p}{2}) \simeq R_1(-y_p)R_2(-x_p)R_3(\frac{x_p y_p}{2}).$$

Acknowledgements

This chapter was written by the author during his stay at Korea Astronomy and Space Science Institute (KASI) under support of KASI Basic Core Technology Development Programs. He thanks Dr. Gross R. and Dr. Jin S. for their kind influence on his works about Earth rotation.

Author details

Sung-Ho Na

Korea Astronomy and Space Science Institute, Korea

References

- [1] Munk WH., Macdonald GJF. The Rotation of the Earth. Cambridge University Press; 1960.
- [2] Lambeck K. The Earth's Variable Rotation: Geophysical Causes and Consequences. Cambridge University Press; 1980.
- [3] Moritz H., Mueller II. Earth Rotation Theory and Observation. Ungar; 1986.
- [4] Seidelmann PK., editor. Explanatory Supplement to the Astronomical Almanac. University Science Books; 1992.
- [5] Gross RS. Earth Rotation Variations – Long Period. In: Herring T., editor. Geodesy, Treatise on Geophysics vol. 3. Elsevier; 2009. p239-294.
- [6] Dehant V., Mathews PM. Earth Rotation Variations. In: Herring T., editor. Geodesy, Treatise on Geophysics vol. 3. Elsevier; 2009. p295-349.
- [7] Petit G., Luzum B., editor. IERS Conventions (2010), IERS Technical Note No. 36, International Earth Rotation and Reference Systems Service (IERS). Verlag des Bundesamts für Kartographie und Geodäsie; 2010.
- [8] Danby JMA. Fundamentals of Celestial Mechanics 2nd ed. Willman-Bell Inc; 1988.
- [9] Melchior P. The Tides of the Planet Earth. Pergamon Press; 1978.
- [10] Stacey FD., Davis PM. Physics of the Earth 4th ed., Cambridge University Press; 2008.
- [11] Capitaine N., Wallace PT., Chapront J. Expressions for IAU 2000 precession quantities, Astronomy and Astrophysics 2003; 412, 567-586.

- [12] Mathews PM., Herring TA., Buffett BA. Modeling of nutation and precession: New nutation series for nonrigid Earth and insights into the Earth's interior, *Journal of Geophysical Research* 2002; 107, B4, 2068.
- [13] Woolard EW. Theory of the Rotation of the Earth around its Center of Mass, *Astronomical Papers* 1953; XV, Pt. I.
- [14] Kinoshita H. Theory of the Rotation of the Rigid Earth, *Celestial Mechanics* 1977; 15, 277-326.
- [15] Wahr J. The forced nutations of an elliptical, rotating, elastic and oceanless earth, *Geophysical Journal Royal Astronomical Society* 1981; 64, 705-727.
- [16] Dehant V. On the nutation of a more realistic Earth model, *Geophysical Journal International* 1990; 100, 477-483.
- [17] Schatok J. A new nutation series for a more realistic model earth, *Geophysical Journal International* 1997; 130, 137-150.
- [18] Huang CL., Jin WJ., Liao XH. A new nutation model of a non-rigid earth with ocean and atmosphere, *Geophysical Journal International* 2001; 146, 126-133.
- [19] Darwin GH. *Scientific Papers I and II*. Cambridge University Press; 1908.
- [20] Brosche P, Sündermann J, editors. *Tidal Friction and the Earth's Rotation*. Springer-Verlag; 1978 and its continuing volume published in 1982.
- [21] Goad C., Douglas B. Lunar tidal acceleration obtained from satellite-derived ocean tide parameters, *Journal of Geophysical Research* 1978; 83, B5, 2306-2310.
- [22] Christodoulidis D., Smith D. Observed Tidal Braking in the Earth/Moon/Sun System, *Journal of Geophysical Research* 1988; 93, B6, 6216-6236.
- [23] Lerch FJ., Nerem RS., Putney BH., Felsentreger TL., Sanchez BV., Marshall JA., Klosko SM., Patel GB., Williamson RG., Chinn DS., Chan JC., Rachlin KE., Chandler NL., McCarthy JJ., Kuthecke SB., Pavlis NK., Pavlis DE., Robbins JW., Kapoor S., Pavlis EC. A geopotential model from satellite tracking, altimeter, and surface gravity data: GEM-T3, *Journal of Geophysical Research* 1994; 99, B2, 2815-2839.
- [24] Lambeck K. Effects of Tidal Dissipation in the Oceans on the Moon's Orbit and the Earth's Rotation, *Journal of Geophysical Research* 1975; 80, 20, 2917-2925.
- [25] Ray RD., Bills BG., Chao BF. Lunar and solar torques on the ocean tides, *Journal of Geophysical Research* 1999; 104, B8, 17653-17659.
- [26] Stephenson FR., Morrison LV. Long-Term Fluctuations in the Earth's Rotation: 700 BC to AD 1990, *Philosophical Transactions of the Royal Society A* 1995; 351, 165-202.
- [27] Morrison LV. Tidal deceleration of the Earth's Rotation deduced from astronomical observations in the period A.D. 1600 to the present. In Brosche P, Sündermann J, editors. *Tidal Friction and the Earth's Rotation*. Springer-Verlag; 1978. p22-27. Original

data and illustration exist in the following article: Morrison LV., Ward CG. An Analysis of the Transits of Mercury: 1677-1973, *Monthly Notice of Royal Astronomical Society* 1975; 173, 183-206.

- [28] Morrison LV., Stephenson LV. Historical Values of the Earth's Clock Error ΔT and the Calculation of Eclipses, *Journal for the History of Astronomy* 2004; 25, 327-336.
- [29] Spencer Jones H. The Rotation of the Earth and the Secular Acceleration of the Sun, Moon and Planets, *Monthly Notice of Royal Astronomical Society* 1939; 99, 541-548.
- [30] Newton R. Secular Accelerations of the Earth and Moon, *Science* 1969; 166, 825-831.
- [31] Rosenberg GD., Runcorn SK., editor. *Growth Rhythms and the History of the Earth's Rotation*. Wiley; 1975.
- [32] Scrutton CT. Periodic Growth Features in Fossil Organisms and the Length of the Day and Month. In Brosche P, Sündermann J, editors. *Tidal Friction and the Earth's Rotation*. Springer-Verlag; 1978. p154-196.
- [33] Lambeck K. The Earth's Paleorotation. In Brosche P., Sündermann J., editors. *Tidal Friction and the Earth's Rotation*. Springer-Verlag; 1978. p145-153.
- [34] Goldreich P. History of the lunar orbit, *Reviews of Geophysics* 1966; 4, 411-439.
- [35] Mignard F. Long Time Integration of the Moon's Orbit and references therein. In Brosche P, Sündermann J, editors. *Tidal Friction and the Earth's Rotation II*. Springer-Verlag; 1982. p67-91.
- [36] Hansen KS. Secular Effects of Oceanic Tidal Dissipation on the Moon's Orbit and the Earth's Rotation, *Review of Geophysics and Space Physics* 1982; 20, 457-480.
- [37] Webb DJ. On the Reduction in Tidal Dissipation Produced by Increases in the Earth's Rotation Rate and Its Effect on the Long-Term History of the Moon's Orbit. In Brosche P., Sündermann J., editors. *Tidal Friction and the Earth's Rotation II*. Springer-Verlag; 1982. p210-221.
- [38] Na S. Tidal Evolution of Lunar Orbit and Earth Rotation, *Journal of the Korean Astronomical Society* 2012; 45, 49-57.
- [39] Woolard EW. Inequalities in mean Solar Time from Tidal Variations in the Rotation of the Earth, *Astronomical Journal* 1959; 64, 140-142.
- [40] Yoder CF., Williams JG., Parke ME. Tidal Variations of Earth Rotation, *Journal of Geophysical Research* 1981; 86, B2, 881-891.
- [41] Merriam JB. Tidal Terms in Universal Time: Effects of Zonal Winds and Mantle Q , *Journal of Geophysical Research* 1984; 89, B12, 10109-10114.
- [42] Hide R., Dickey JO. Earth's Variable Rotation, *Science* 1991; 253, 629-637.

- [43] McCarthy DD., Luzum BJ. An analysis of tidal variations in the length of day, *Geophysical Journal International* 1993; 114, 341-346.
- [44] Gross RS. The Effect of Ocean Tides on the Earth's Rotation as Predicted by the Results of an Ocean Tide Model, *Geophysical Research Letter* 1993; 20, 293-296.
- [45] Chao BF., Merriam JB., Tamura Y. Geophysical analysis of zonal tidal signals in length of day, *Geophysical Journal International* 1995; 122, 765-775.
- [46] Chen JL., Wilson CR., Chao BF., Shum CK., Tapley BD. Hydrological and oceanic excitations to polar motion and length-of-day variation, *Geophysical Journal International* 2000; 141, 149-156.
- [47] Höpfner J. Atmospheric, oceanic and hydrological contributions to seasonal variations in length of day, *Journal of Geodesy* 2001; 75, 137-150.
- [48] Smith ML., Dahlen FA. The period and Q of the Chandler wobble, *Geophysical Journal Royal Astronomical Society* 1981; 64, 223-281.
- [49] Wahr J. Polar Motion Models: Angular Momentum Approach. In: Plag HP., Chao B., Gross R., van Dam T., editors. *Forcing of Polar Motion in the Chandler Frequency Band: a Contribution to Understanding Interannual Climate Variation: proceedings, 21-23 April 2004. Luxemburg. European Center for Geodynamics and Seismology; 2005, 1-7.*
- [50] Smith ML. Wobble and nutation of the Earth, *Geophysical Journal Royal Astronomical Society* 1977; 50, 103-140.
- [51] Sasao T., Okubo S., Saito M. A Simple Theory on the Dynamical Effects of a Stratified Fluid Core upon Nutational Motion of the Earth. In: Fedorov EP., Smith ML., Bender PL., editors. *Nutation and the Earth's Rotation, IAU Symposium No. 78. D Reidel Publishing Co; 1978. p165-183.*
- [52] Sasao T., Wahr J. An excitation mechanism for the free core nutation, *Geophysical Journal Royal Astronomical Society* 1981; 64, 729-746.
- [53] Dehant V., Hinderer J., Legros H., Leffz M. Analytical approach to the computation of the Earth, the outer core and the inner core rotational motions, *Physics of the Earth and Planetary Interiors* 1993; 76, 259-282.
- [54] Rochester MG., Crossley DJ. Earth's long-period wobbles: a Lagrangian description of the Liouville equations, *Geophysical Journal International* 2009; 176, 40-62.
- [55] Guo JY., Greiner-Mai H., Ballani L. A spectral search for the inner core wobble in Earth's polar motion, *Journal of Geophysical Research* 2005; 110, B10402.
- [56] Wilson CR, Vicente RO. Maximum likelihood estimates of polar motion parameters. In: McCarthy DD., Carter We., editors. *Variations in Earth Rotation, AGU Monograph Series vol. 59; 1990. p151-155.*

- [57] McCarthy DD., Luzum B. Path of the mean rotational pole from 1899 to 1994, *Geophysical Journal International* 1996; 125, 623-629.
- [58] Gross RS., Vondrák J. Astrometric and space-geodetic observations of polar wander, *Geophysical Research Letter* 1999; 26, 2085-2088.
- [59] Schuh H., Nagel S., Seitz T. Linear drift and periodic variations observed in long time series of polar motion, *Journal of Geodesy* 2001; 74, 701-710.
- [60] Höpfner J. Low-frequency variations, Chandler and annual wobbles of polar motion as observed over one century, *Surveys in Geophysics* 2004; 25, 1-54.
- [61] Höpfner J. Parameter variability of the observed periodic oscillations of polar motion with smaller amplitudes, *Journal of Geodesy* 2003; 77, 388-401.
- [62] Na, S., Cho, J., Baek J., Kwak Y., Yoo SM. Spectral Analysis on Earth's Spin Rotation for the Recent 30 years, *Journal of the Korean Physical Society* 2012; 61, 152-157.
- [63] Jochmann H. Period variations of the Chandler wobble, *Journal of Geodesy* 2003; 77, 454-458.
- [64] Gross RS. The excitation of the Chandler wobble, *Geophysical Research Letter* 2000; 27, 2329-2332.
- [65] Aoyama Y., Naito I. Atmospheric excitation of the Chandler wobble, 1983-1998, *Journal of Geophysical Research* 2001; 106, B5, 8941-8954.
- [66] Brzezinski A., Nastula J. Oceanic excitation of Chandler wobble, *Advances in Space Research* 2002; 30, 195-200.
- [67] Gross RS., Fukumori I., Menemenlis D. Atmospheric and oceanic excitation of the Earth's wobbles during 1980-2000, *Journal of Geophysical Research* 2003; 108, B8, 2370.
- [68] Seitz F., Schmidt M. Atmospheric and oceanic contributions to Chandler wobble excitation determined by wavelet filtering, *Journal of Geophysical Research* 2005; 110, B11406.
- [69] Salstein DA., Rosen RD. Regional Contributions to the Atmospheric Excitation of Rapid Polar Motions, *Journal of Geophysical Research* 1989; 94, D7, 9971-9978.
- [70] Chao BF., Au AY. Atmospheric Excitation of the Earth's Annual Wobble: 1980-1988, *Journal of Geophysical Research* 1991; 96, B4, 6577-6582.
- [71] Nastula J., Kolaczek B. Seasonal Oscillations in Regional and Global Atmospheric Excitation of Polar Motion, *Advances in Space Research* 2002; 30, 381-386.
- [72] Ponte RM., Oceanic excitation of daily to seasonal signals in Earth rotation: results from a constant-density numerical model, *Geophysical Journal International* 1997; 130, 469-474.

- [73] Chao BF., Ray RD., Gipson JM., Egbert GD., Ma C. Diurnal/semidiurnal polar motion excited by oceanic tidal angular momentum, *Journal of Geophysical research* 1996; 101, B9, 20151-20163.
- [74] Zhou YH., Salstein DA., Chen JL. Revised atmospheric excitation function series related to Earth's variable rotation under consideration of surface topography, *Journal of Geophysical Research* 2006; 111, D12108.
- [75] Nilsson T., Böhm J., Böhm S., Schindelegger M., Schuh H., Schreiber U., Gebauer A., Klügel T. High frequency Earth rotation variations from CONT11, EGU General Assembly 2012; Session G5.1.
- [76] Brzezinski A., Dobslaw H., Thomas M., Slusarczyk L. Subdiurnal atmospheric and oceanic excitation of Earth rotation estimated from 3-hourly AAM and OAM data, EGU General Assembly 2012; Session G5.1.
- [77] Jin S., Chambers DP., Tapley BD. Hydrological and oceanic effects on polar motion from GRACE and models, *Journal of Geophysical Research* 2010; 115, B02403.
- [78] Jin S., Zhang LJ., Tapley BD. The understanding of length-of-day variations from satellite gravity and laser ranging measurements, *Geophysical Journal International* 2011; 184, 651-660.
- [79] Jin S., Hassan A., Feng G. Assessment of terrestrial water contributions to polar motion from GRACE and hydrological models, *Journal of Geodynamics* 2012; in press.

