

We are IntechOpen, the world's leading publisher of Open Access books Built by scientists, for scientists

4,800

Open access books available

122,000

International authors and editors

135M

Downloads

Our authors are among the

154

Countries delivered to

TOP 1%

most cited scientists

12.2%

Contributors from top 500 universities



WEB OF SCIENCE™

Selection of our books indexed in the Book Citation Index
in Web of Science™ Core Collection (BKCI)

Interested in publishing with us?
Contact book.department@intechopen.com

Numbers displayed above are based on latest data collected.

For more information visit www.intechopen.com



Multiple Kinase Involvement in the Regulation of Vascular Growth

Shaquria P. Adderley, Chintamani N. Joshi,
Danielle N. Martin, Shayna Mooney and David A. Tulis
East Carolina University, Brody School of Medicine,
Department of Physiology, Greenville NC,
USA

1. Introduction

The initial discovery of protein phosphorylation as a regulatory mechanism for the control of glycogen metabolism has led to intense interest of protein phosphorylation in regulating protein function (Cohen *et al.*, 2001). Kinases play a variety of roles in many physiological processes within cells and represent one of the largest families in the human genome with over 500 members comprising protein serine/threonine, tyrosine, and dual-specificity kinases (Manning *et al.*, 2002). Phosphorylation of proteins is one of the most significant signal transduction mechanisms which regulate intracellular processes such as transport, growth, metabolism, apoptosis, cytoskeletal arrangement and hormone responses (Bononi *et al.*, 2011; Heidenreich *et al.*, 1991; Manning *et al.*, 2002; Pawson *et al.*, 2000). As such, abnormal phosphorylation of proteins can be either a cause or a consequence of disease. Kinases are regulated by activator and inhibitor proteins, ligand binding, and phosphorylation by other proteins or via autophosphorylation (Hanks *et al.*, 1991; Hug *et al.*, 1993; Scott, 1991; Taylor *et al.*, 1990; Taylor *et al.*, 1992). Since kinases play key functions in many cellular processes, they represent an attractive target for therapeutic interventions in many disease states such as cancer, inflammation, diabetes and arthritis (Cohen *et al.*, 2010; Fry *et al.*, 1994; Karin, 2005; Mayers *et al.*, 2005). In particular, the serine/threonine family of kinases comprises approximately 125 of the 500 family of kinases and includes the cyclic adenosine monophosphate (cAMP)-dependent protein kinase (PKA), the cyclic guanosine monophosphate (cGMP)-dependent protein kinase (PKG), and protein kinase C (PKC). These kinases are implicated in the regulation of cell growth and are the focus of this current study.

Nitric oxide (NO) is the primary endogenous activator of soluble guanylate cyclase (sGC) and cGMP generation in the vasculature with PKG historically acknowledged as its primary downstream kinase (Ignarro, 1991; Ignarro *et al.*, 1985). However, this area of research is controversial since the effects of NO are tightly regulated and specific to certain sub-cellular microenvironments. The NO-sGC-cGMP signaling pathway is of major importance in the cardiovascular system where it modulates functions such as vascular smooth muscle cell (VSMC) relaxation and growth (Ignarro, 1991; Ignarro *et al.*, 1986; Ignarro *et al.*, 1985; Lucas *et al.*, 2000). Vascular remodeling is associated with injury and the pathogenesis of disorders

such as atherosclerosis and it is well established that the proliferation and migration of VSMCs play a major role in these processes (Gibbons *et al.*, 1994; Herity *et al.*, 1999; Shi *et al.*, 1996). The molecular mechanisms of cGMP signaling are not well understood, since studies suggest that NO can both promote and inhibit pathological vascular remodeling (Kawashima *et al.*, 2001; Ozaki *et al.*, 2002; Rudic *et al.*, 1998). Furthermore, recent studies provide sound evidence for NO-independent heme oxygenase (HO) and carbon monoxide (CO) as physiologically relevant signals capable of activating sGC and promoting cGMP signal transduction (Christodoulides *et al.*, 1995; Siow *et al.*, 1999; Tulis *et al.*, 2001a; Tulis *et al.*, 2001b; Tulis *et al.*, 2005). BAY 41-2272 (BAY) is a prototype of a novel class of sGC modulators that potentiate both NO- and CO-mediated signaling and that has potential for use in clinical trials for the treatment of cardiovascular disease, yet mechanisms of action for BAY and similar agents still remain to be determined (Boerrigter *et al.*, 2007; Mendeleev *et al.*, 2009; Roger *et al.*, 2010). One study suggests that BAY may have phosphodiesterase (PDE) 5 inhibitory activity at high concentrations (Mullershausen *et al.*, 2004); however this is still controversial. BAY interacts with sGC via a different mechanism than that of NO; therefore, the amount of cGMP generated and subsequent targets that are activated may be distinct leading to different responses than that of traditional NO-based signaling. This is important and a perfect example of a drug-induced versus a cell-specific response.

Individual drugs interact with cells differently depending on the cellular microenvironments within the cell. Recent reports demonstrate the ability of cell- and agonist-specific responses following ligand stimulation due to intracellular localization of proteins including kinases which operate largely to ensure signal specificity (Di Benedetto *et al.*, 2008; Lissandron *et al.*, 2006; Xiang, 2011). An increase in cyclic nucleotide signaling can affect multiple signaling pathways because of activation of such kinases in particular intracellular domains. Hence, compartmentalization of proteins is very critical in cellular/biomolecular signaling in order to ensure a specific response to a particular stimulus in cells.

VASP, a cytoskeletal protein that belongs to the Ena/VASP family, was originally characterized as a substrate for cyclic nucleotide-dependent PKA and PKG (Krause *et al.*, 2002; Reinhard *et al.*, 2001). At least four distinct phosphorylation sites on VASP (Ser₁₅₇, Ser₂₃₉, Thr₂₇₈, Ser₃₂₂) have been identified (Butt *et al.*, 1994; Chitaley *et al.*, 2004; Thomson *et al.*, 2011). Despite the conventional thought that phosphorylation of VASP at Ser₂₃₉ and Ser₁₅₇ occurs by PKG and PKA, respectively (Butt *et al.*, 1994), more recent studies suggest that crosstalk exists and that Ser₁₅₇, Ser₂₃₉ and Thr₂₇₈ can be phosphorylated by both PKA and PKG. However, phosphorylation of VASP by PKC and AMP kinase is more selective (Benz *et al.*, 2009; Blume *et al.*, 2007; Zhuang *et al.*, 2004). The phosphorylation pattern of VASP is complex and dynamic and occurs in site-specific order with different priorities (Abel *et al.*, 1995; Butt *et al.*, 1994; Zhuang *et al.*, 2004). Functionally, VASP plays an important role in regulating cytoskeletal dynamics and processes such as cell adhesion and migration (Kwiatkowski *et al.*, 2003; Mitchison *et al.*, 1996; Vasioukhin *et al.*, 2000), and phosphorylation of VASP has been shown to be important physiologically as it is involved in these processes. It was reported that VASP phosphorylation at Ser₁₅₇ is required for the growth stimulatory effect and phosphorylation at Ser₂₃₉ is required for the growth inhibitory effect of NO on SMCs (Chen *et al.*, 2004). Although VASP phosphorylation continues to be used as a biochemical marker for selective kinase activation, its precise cellular and molecular functions remain to be fully determined.

Previously, we demonstrated in both rat commercial (A7R5) VSMCs and rat primary VSMCs that BAY increases cyclic nucleotides and inhibits vascular growth through processes involving VASP phosphorylation (Joshi *et al.*, 2011; Mendeleev *et al.*, 2009). In this report we demonstrate for the first time that BAY increases the activity of protein kinases and that this system has the ability to regulate growth of VSMCs. Novel results include demonstration that kinase activity from PKA, PKG and PKC has the capacity to increase phosphorylation of cellular proteins including VASP. Notably, the implication of multiple kinases in the regulation and activation of VASP provides sound evidence for potential crosstalk among otherwise distinct kinases within the cell. Functionally, strong evidence is presented linking cyclic nucleotide-mediated kinase activation and VASP phosphorylation with inhibition of vascular smooth muscle growth through modulation of proliferation and migration.

2. Methods

2.1 Rat primary VSMC culture

Following established procedures (Liu *et al.*, 2009; Tulis *et al.*, 2002), thoracic aorta VSMCs were obtained from male Sprague-Dawley rats (100-125 grams) and cultured in Dulbecco's modified Eagle's medium supplemented with 10% fetal bovine serum (FBS) and Primocin (100mg/L) at 37°C in 95% air/5% CO₂. Cells were split and propagated through passage 6 (unless otherwise specified). For select experiments higher passage cells were used between passage 7 and 10. All studies abided by the guidelines of the Institutional Animal Care & Use Committee and conformed to the Guide for the Care and Use of Laboratory Animals (US National Institutes of Health, Publication No. 85-23, revised 1996).

2.2 In-cell western

Phosphorylation of VASP was examined by use of an established cell-based immunocytochemical assay for monitoring kinase signaling pathways (Chen *et al.*, 2005). Rat VSMCs were seeded (~20,000 cells/well) in 96 well plates and once adhered, pretreated with either kinase and PDE inhibitors or vehicle for 30 minutes after which they were stimulated with either BAY for 60 minutes or cyclic nucleotide analogs (8Br-cAMP; 10µM or 8Br-cGMP; 10µM, Tocris) for 30 minutes. The inhibitors used for In-Cell Westerns were: adenosine 3',5'-cyclic monophosphate-dependent protein kinase inhibitor (5-24), (PKI; 10µM), a selective PKA inhibitor (Enzo); DT-2 trifluoroacetate salt, (DT2; 10µM), a selective PKG inhibitor (Sigma-Aldrich); calphostin C (CALC; 100nM), a selective inhibitor of PKC (Enzo); cilostazol (CILO; 10 µM), a selective PDE3 inhibitor (Sigma-Aldrich); rolipram (ROL; 10 µM), a selective PDE4 inhibitor (Tocris); zaprinast (ZAP; 10 µM; MP Biochemicals) and vardenafil (VAR; 50 nM; Toronto Research Chemicals), selective PDE5 inhibitors. The vehicle for CILO, ROL, CALC and ZAP was DMSO (≤ 0.5%). After incubation, media was removed and cells were fixed with 4% formalin in PBS for 20 minutes. Cells were washed and permeabilized with PBS containing 0.1% Triton X-100, followed by 1X PBS + 0.1% Tween-20. Cells were blocked with IR blocking solution (Odyssey) for 3 hours and then incubated with primary antibodies directed against VASP at pSer₂₃₉ (1:500; Cell Signaling), VASP at pSer₁₅₇ (1:500; Cell Signaling) or α-tubulin (1:500; Sigma) overnight at 4°C. Cells were washed with PBS + 0.1% Tween-20 followed by incubation with two secondary antibodies: IRDye 800CW

(1:500; Odyssey) and Alexa Fluor 680 for 1 hour. Cells were washed with PBS containing 0.1% Tween-20 followed by plain PBS. The plate was allowed to dry overnight and scanned using the appropriate channels for detection with the Odyssey Imager.

2.3 Western blot

Rat VSM cells were used between passages 4 and 6 for all experiments. Cells were lysed in buffer (50mM Tris, pH 6.8; 1% SDS; 0.1% Triton; protease inhibitor cocktail (Roche); phosphate inhibitor cocktail (Santa Cruz)) and sonicated on ice followed by centrifugation (14000g, 20 min). Protein concentration of whole cell lysates was determined by the BCA assay (Pierce). Proteins were separated on SDS-PAGE gels and transferred to Immobilon-P membranes (Millipore) using Mini-Protean Electrophoresis and Mini Trans-Blot Cells (Bio-Rad). Blots were blocked with 5% non-fat milk in TTBS (25mM Tris/Tris-HCl; 0.0027M KCl; 0.13M NaCl; 0.1% Tween 20) or 5% BSA in TTBS for 1 hour and incubated with primary antibodies directed against protein kinase G (PKG) and protein kinase A (PKA) (1:1000; Abcam), phospho-PKA_{Ser338} (1:1000; Biosource), VASP, phospho-VASP_{Ser157}, and phospho-VASP_{Ser239} (1:1000; Cell Signaling) and α -tubulin (1:1000; Sigma) overnight at 4 °C. Blots were washed with TTBS, incubated with peroxidase-linked secondary antibodies (1:5000) for 1 hour, visualized using Pierce ECL Western blotting kit, documented using an Alpha Imager 2200, and analyzed with ImageJ 1.40g software (NIH).

2.4 Hemocytometry assay

Rat VSMCs were seeded in 24 well plates (40,000 cells/well) and after adherence were quiesced overnight in 0.2% FBS. Cells were then pretreated with PKI, DT2 or vehicle for 30 mins, prior to stimulation with BAY (10 μ M) for 48 or 72 hrs. At the end of the time point, cells in each well were trypsinized and the cell count estimated using a hemocytometer at 10X magnification.

2.5 MTT assay

Rat VSMCs were seeded in 96 well plates and pretreated with PKI, DT2 or vehicle for 30 mins, prior to stimulation with BAY (10 μ M) for 24hrs. After treatment media was removed and MTT was added to each well and incubated for 4 hours at 37°C. The MTT was removed, MTT solvent added and absorbance read after 15 mins.

2.6 BrdU assay

Rat VSMCs were seeded in 96 well plates and pretreated with PKI, DT2, CALC or vehicle for 30 mins, prior to stimulation with BAY (10 μ M) for 48hrs. After treatment media was removed and BrdU labeling solution was added to each well and incubated for 3 hours at 37°C. Next the labeling solution was removed, cells were fixed and the anti-BrdU antibody added for 90 mins. Cells were washed, the substrate was then added, and absorbance was read after 30 mins.

2.7 Kinase assay

Rat VSMCs were seeded in 6 well plates and grown to confluence. The cells were then pretreated with PKI, DT2, CALC or vehicle for 30 mins, prior to stimulation with BAY

(10 μ M) for 1 hour. The cells were lysed, protein was isolated and protein concentration was determined via a BSA assay. Kinase activity was determined using an activity kit (Enzo Life Sciences). Briefly, samples were added to the wells, the reaction was initiated with ATP, and cells were incubated at 30°C for 90 mins. A phosphospecific substrate antibody was added and incubated at RTP for 60 mins. Next the plate was washed and the HRP conjugate was added and incubated for 30 mins. Finally the plate was washed and substrate added for 30 mins and absorbance was read.

2.8 Scratch wound assay

Rat VSMCs were seeded in 24 well plates. Cells were injured with a 1 mm scrape and the images captured. Immediately cells were then treated with PKI, DT2, CALC or vehicle for 30 mins, prior to stimulation with BAY (10 μ M) for 6 or 16 hrs. Afterward the images were captured and distances migrated were measured.

2.9 Data analysis

Statistical significance between experiments was determined using an analysis of variance (ANOVA). In the event that the *F* ratio indicated a significant $P < 0.05$ change occurred, a post hoc test was performed to identify individual differences. Results were reported as mean \pm the standard error of the mean (SEM).

3. Results

3.1 The effect of kinase inhibitors on BAY-induced VASP phosphorylation

We recently demonstrated that BAY, a potent stimulator of sGC, increased phosphorylation of VASP in a site-specific fashion in rat A7R5 VSMCs (Mendelev *et al.*, 2009) and in rat primary VSMCs (Joshi *et al.*, 2011). In the current study we sought to identify kinases responsible for this selective phosphorylation of VASP induced by BAY. In primary VSMCs, BAY (10 μ M) significantly increased VASP phosphorylation at both Ser₁₅₇ and Ser₂₃₉ (Figures 1A, 1B, respectively). Addition of PKI (10 μ M) or CALC (100 nM) slightly (non-significantly) increased BAY-induced phosphorylation of VASP at Ser₁₅₇ compared to effects of BAY alone (Fig. 1A), whereas CALC slightly (non-significantly) reduced VASP phosphorylation at Ser₂₃₉ compared to BAY alone (Fig. 1B).

Due to the relative ineffectiveness of select kinase inhibition on site-specific VASP phosphorylation, the possibility of crosstalk between these kinases was examined. Intriguingly, the combination of PKI and DT2 increased the phosphorylation induced by BAY at Ser₁₅₇ (Fig 2A), while the combination of PKI and CALC markedly increased the phosphorylation induced by BAY at Ser₂₃₉ (Fig. 2B).

3.2 Effect of PDE inhibition and kinase activity on VASP phosphorylation

In order to determine if kinase inhibition affects the ability of PDEs to regulate VASP, VSMCs were pretreated with inhibitors of kinases and PDEs prior to stimulation with BAY. In the presence of BAY and DT2, the PDE 3 inhibitor CILO and the PDE 5 inhibitors VAR or ZAP, significantly increased phosphorylation at Ser₁₅₇ compared to BAY alone (Fig. 3A). PKI increased Ser₁₅₇ phosphorylation induced by BAY (Fig. 3B); however, PDE inhibition

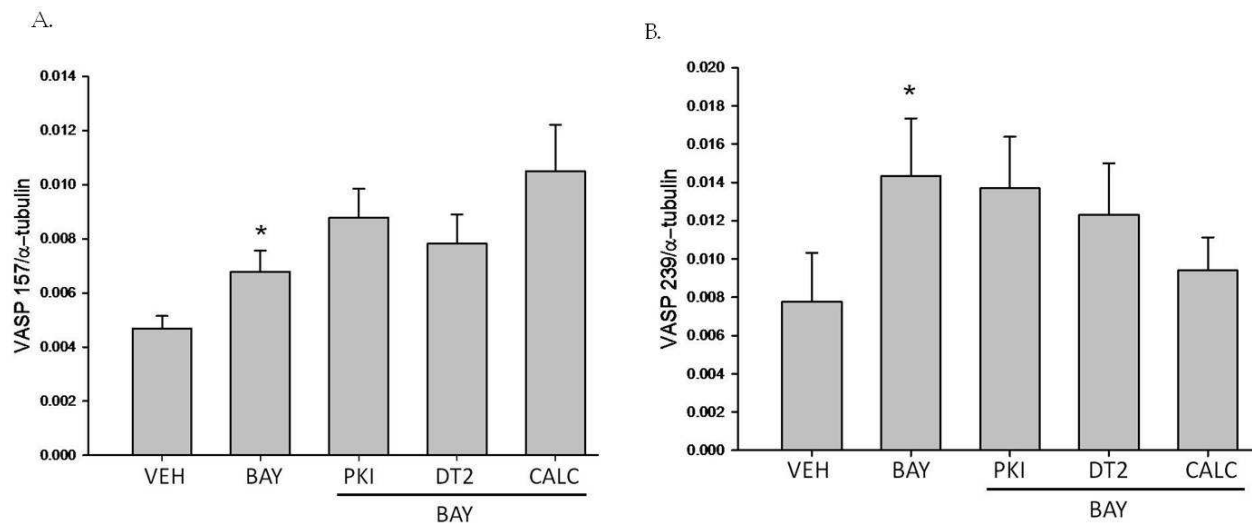


Fig. 1. (A) Effect of kinase inhibitors on BAY 41-2272 (BAY)-induced VASP_{Ser157} phosphorylation. VSMCs were pretreated with PKI, DT2, CALC or vehicle for 30 min prior to stimulation with BAY (10μM) for 60 minutes (n=15). (B) Effect of kinase inhibitors on BAY-induced VASP_{Ser239} phosphorylation. VSMCs were pretreated with PKI, DT2, CALC or vehicle for 30 min prior to stimulation with BAY (10μM) for 60 minutes (n=15). Values are the means ± SE. * = different from vehicle ($P < 0.05$).

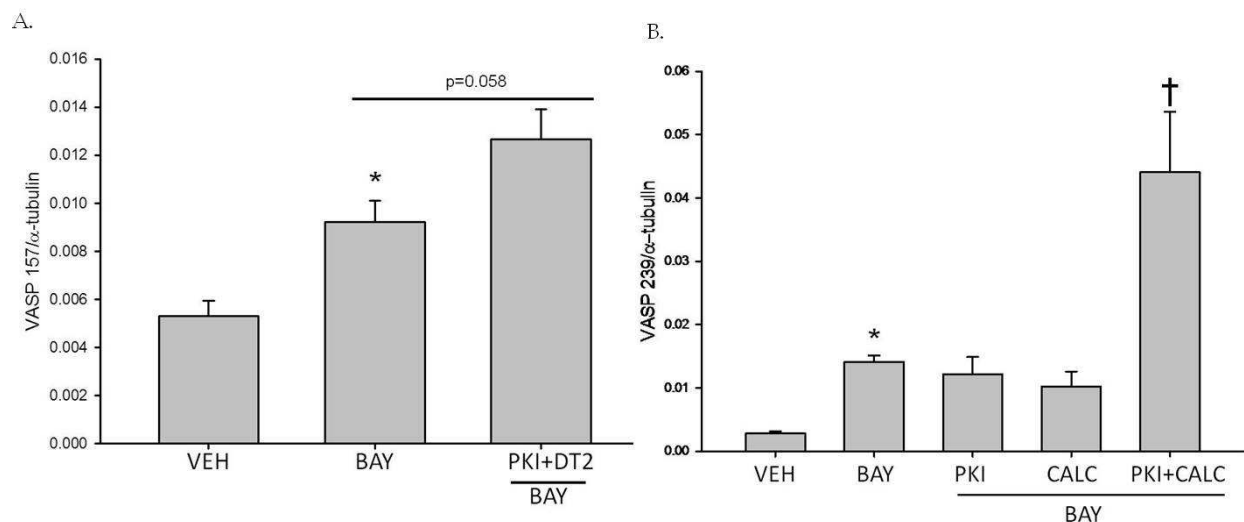


Fig. 2. (A) Effect of PKI and DT2 on BAY-induced VASP_{Ser157} phosphorylation. VSMCs were pretreated with PKI and DT2 or vehicle for 30 min prior to stimulation with BAY (10μM) for 60 minutes (n=5). (B) Effect of PKI and CALC on BAY-induced VASP_{Ser239} phosphorylation. VSMCs were pretreated with PKI or CALC individually, PKI+CALC or vehicle for 30 min prior to stimulation with BAY (10μM) for 60 minutes (n=5). Values are the means ± SE. * = different from vehicle ($P < 0.05$); † = different from vehicle and BAY ($P < 0.05$).

had no further effect on Ser₁₅₇ phosphorylation. BAY-induced Ser₂₃₉ phosphorylation was potentiated only in the presence of PKI and the PDE 5 inhibitor ZAP (Fig 3C). Neither an inhibitor of PKA nor PKG and PDEs had any effect on Ser₂₃₉ in any other instance (data not shown).

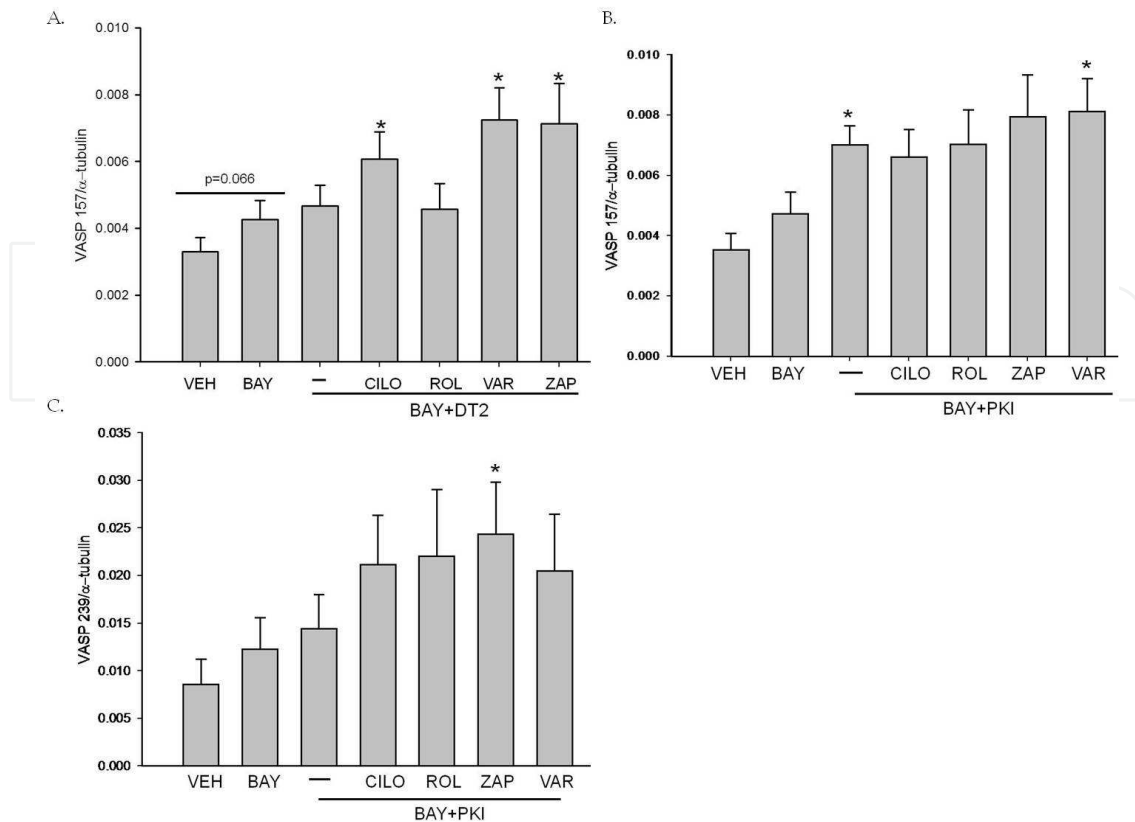


Fig. 3. (A) Effect of DT2 and PDE inhibitors on BAY-induced VASP₁₅₇ phosphorylation. VSMCs were pretreated with DT2 alone or CILO, ROL, VAR, or ZAP in the presence of DT2 or vehicle for 30 min prior to stimulation with BAY (10 μ M) for 60 minutes (n=13). (B) Effect of PKI and PDE inhibitors on BAY-induced VASP₁₅₇ phosphorylation. VSMCs were pretreated with PKI alone, CILO, ROL, VAR, or ZAP in the presence of PKI, or vehicle for 30 min prior to stimulation with BAY (10 μ M) for 60 minutes (n=8). (C) Effect of PKI and PDE inhibitors on BAY 41-2272 (BAY)-induced VASP₂₃₉ phosphorylation. VSMCs were pretreated with PKI alone, CILO, ROL, VAR, or ZAP in the presence of PKI, or vehicle for 30 min prior to stimulation with BAY (10 μ M) for 60 minutes (n=14). Values are the means \pm SE. * = different from BAY ($P < 0.05$).

3.3 Effect of kinase inhibitors on cyclic nucleotide analog-induced VASP phosphorylation

Since BAY increases cAMP and cGMP (Joshi *et al.*, 2011; Mendeleev *et al.*, 2009; Stasch *et al.*, 2001; Stasch *et al.*, 2009) as well as the activity of their respective kinases (Joshi *et al.*, 2011), and considering that both kinases can phosphorylate VASP at either kinase-preferred site (Butt *et al.*, 1994), cyclic nucleotide analogs were used to determine the kinase(s) specifically involved in VASP phosphorylation. VSMCs were incubated with selective kinase inhibitors prior to addition of a cAMP or cGMP analog. Results show that 8-Br-cAMP alone failed to significantly increase phosphorylation at Ser₁₅₇ or Ser₂₃₉, but PKI significantly increased phosphorylation at both sites induced by the analogs (Figs. 4A, 4B). Neither DT2 nor CALC had an effect on VASP phosphorylation in the presence of 8Br-cAMP. Additionally, when using 8Br-cAMP multiple kinase inhibition had no effect greater than that of PKI alone at either site (data not shown).

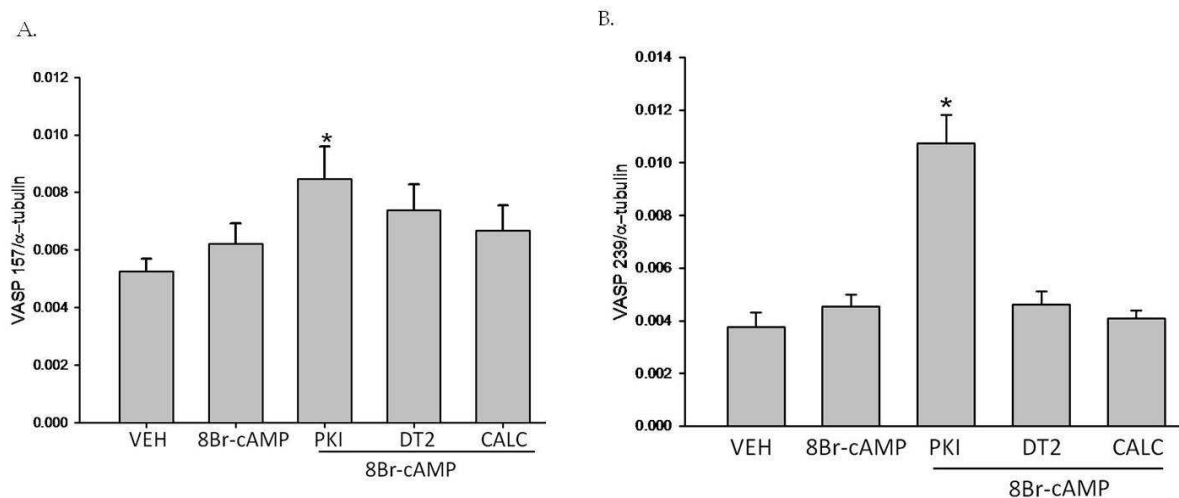


Fig. 4. (A) Effect of kinase inhibitors and 8Br-cAMP on VASP_{Ser157} phosphorylation. VSMCs were pretreated with PKI, DT2, CALC or vehicle for 30 min prior to stimulation with 8Br-cAMP (10uM) for 30 minutes (n=10). (B) Effect of kinase inhibitors and 8Br-cAMP on VASP_{Ser239} phosphorylation. VSMCs were pretreated with PKI, DT2, CALC or vehicle for 30 min prior to stimulation with 8Br-cAMP (10uM) for 30 minutes (n=10). Values are the means \pm SE. * = different from vehicle ($P < 0.05$).

In comparison, in these cells 8Br-cGMP alone failed to increase Ser₁₅₇ phosphorylation; however, co-treatment with PKI or CALC increased Ser₁₅₇ phosphorylation (Fig. 5A). On the other hand, 8Br-cGMP alone significantly increased phosphorylation at Ser₂₃₉ and a trend for potentiation by PKI was observed ($p = 0.059$; Fig. 5B).

Co-treatment with an inhibitor of PKG and PKC blunted the increase induced by 8-Br-cGMP at Ser₂₃₉ (Fig. 6).

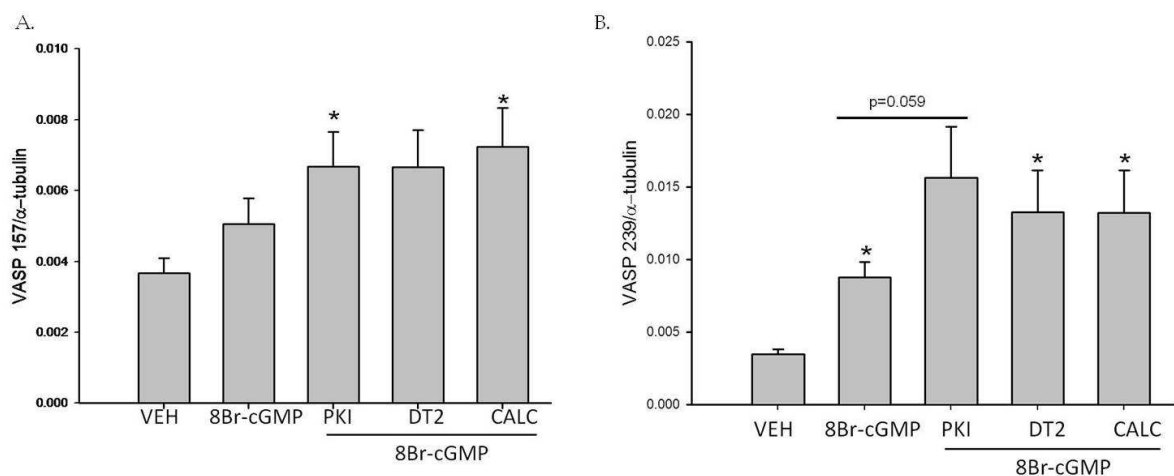


Fig. 5. (A) Effect of kinase inhibitors and 8Br-cGMP on VASP_{Ser157} phosphorylation. VSMCs were pretreated with PKI, DT2, CALC or vehicle for 30 min prior to stimulation with 8Br-cGMP (10uM) for 30 minutes (n=10). (B) Effect of kinase inhibitors and 8Br-cGMP on VASP_{Ser239} phosphorylation. VSMCs were pretreated with PKI, DT2, CALC or vehicle for 30 min prior to stimulation with 8Br-cGMP (10uM) for 30 minutes (n=10). Values are the means \pm SE. * = different from vehicle ($P < 0.05$).

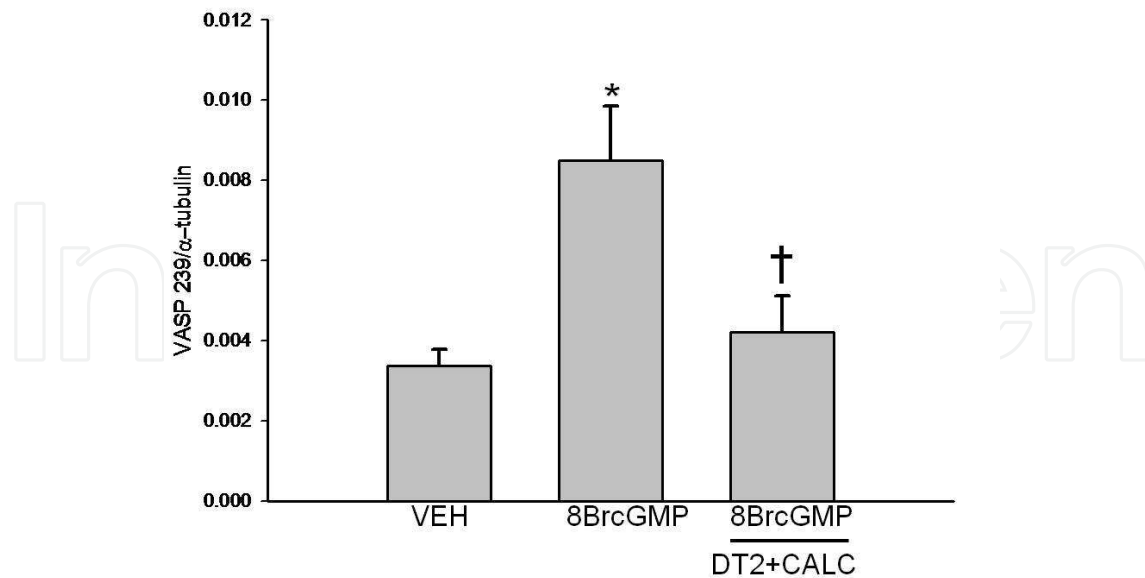


Fig. 6. Effect of CALC and DT2 on 8Br-cGMP-induced VASP_{Ser239} phosphorylation. VSMCs were pretreated with CALC and DT2 or vehicle for 30 min prior to stimulation with 8Br-cGMP for 30 minutes (n=8). Values are the means \pm SE. * = different from vehicle ($P < 0.05$); † = different from 8Br-cGMP ($P < 0.05$).

3.4 Effect of BAY on Kinase activity

To determine if BAY increases kinase activity, VSMCs were pretreated with inhibitors of kinases prior to stimulation with BAY and selective kinase activity assays were performed. BAY increased the activity of PKA $\sim 86\%$ from (0.0278 ± 0.0223 to 0.0519 ± 0.0415). PKI decreased the activity back to control levels (0.0214 ± 0.0160). Similarly, BAY increased the activity of PKG $\sim 55\%$ from (0.0108 ± 0.0042 to 0.0167 ± 0.007) and DT2 decreased the activity back to control levels (0.0116 ± 0.003).

3.5 Effect of kinase inhibitors and BAY on Proliferation

Previously we concluded that BAY inhibits proliferation of both rat A7R5 (Mendelev *et al.*, 2009) and rat primary VSMCs (Joshi *et al.*, 2011). To determine the influence of kinases on BAY-induced growth suppression, three complementary assays were performed. In the MTT assay, a mitochondria reductase-dependent approach, cells were pretreated with kinase inhibitors prior to stimulation with BAY. BAY (non-significantly) decreased proliferation ($\sim 25\%$) after 24 hrs, and inhibition of either PKA or PKG significantly potentiated this effect (Fig. 7A). Using the BrdU assay, BAY significantly inhibited DNA replication after 48 hours, yet inhibition of any individual kinase had no further effect at this time point (Fig. 7B). Using hemocytometry, BAY reduced cell numbers after both 48 (Fig. 7C) and 72 hrs (Fig. 7D). Inhibition of PKA at 48 hrs (Fig. 7C) and either PKA or PKG at 72 hrs (Fig. 7D) potentiated this effect. On the other hand, a lower concentration of DT2 ($1\mu\text{M}$) had no effect at 72 hrs (Fig. 7E). The Neutral red and MTT assays done at 16 hrs demonstrate that BAY and all inhibitor combinations were not cytotoxic (data not shown).

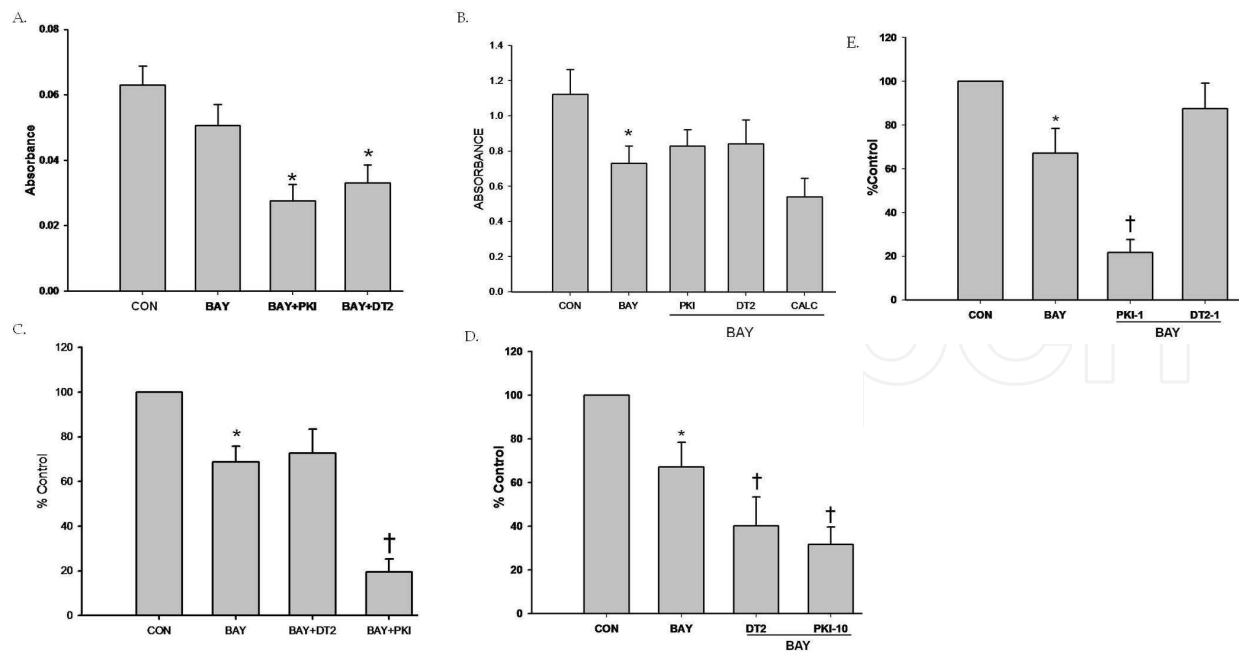


Fig. 7. (A) MTT assay to test the effect of PKI, DT2 and BAY on proliferation. VSMCs were pretreated with PKI, DT2 or vehicle for 30 min prior to stimulation with BAY (10uM) for 24 hours (n=9). (B) BrdU assay to test the effect of PKI, DT2, CALC and BAY on proliferation. VSMCs were pretreated with PKI, DT2, CALC or vehicle for 30 min prior to stimulation with BAY (10uM) for 48 hours (n=10). (C) Hemocytometry assay to test the effect of PKI, DT2 and BAY on proliferation. VSMCs were pretreated with PKI, DT2 or vehicle for 30 min prior to stimulation with BAY (10uM) for 48 hours (n=7). (D) Hemocytometry assay to test the effect of PKI, DT2 and BAY on proliferation. VSMCs were pretreated with PKI, DT2 or vehicle for 30 min prior to stimulation with BAY (10uM) after 72 hours (n=16). Values are the means \pm SE. * = different from vehicle ($P < 0.05$); † = different from vehicle and BAY ($P < 0.01$). (E) Hemocytometry assay to test the effect of PKI, DT2 and BAY on proliferation. VSMCs were pretreated with PKI, DT2 or vehicle for 30 min prior to stimulation with BAY (10uM) for 72 hours (n=4). Values are the means \pm SE. * = different from vehicle ($P < 0.05$); † = different from vehicle and BAY ($P < 0.05$).

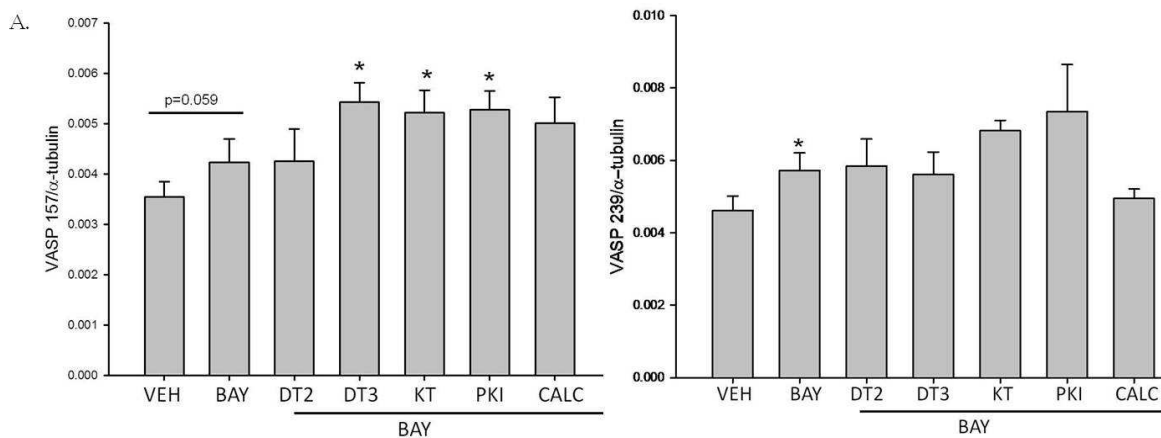
3.6 Effect of kinase inhibitors and BAY on Migration

Previously we observed that BAY inhibits cell migration in rat primary VSMCs (Joshi *et al.*, 2011). In order to determine the role of kinases on this anti-migratory effect of BAY, VSMCs were pretreated with inhibitors of PKG, PKA or PKC prior to stimulation with BAY and migration was assessed using the wounding assay. BAY inhibited migration ~40% after 6 hours and co-incubation of BAY with DT-2 or CALC inhibited migration ~13% or ~17%, respectively (data not shown).

3.7 The effect of kinase inhibitors on BAY-induced VASP phosphorylation in high passaged rat primary VSMCs

In comparison to studies performed at low passage, in higher passage VSMCs (passage > 6) either PKI or two chemically dissimilar inhibitors of PKG, DT3 and KT5823, significantly increased phosphorylation of VASP at Ser₁₅₇ but had no effect at Ser₂₃₉ (Suppl. Figs. 1A and

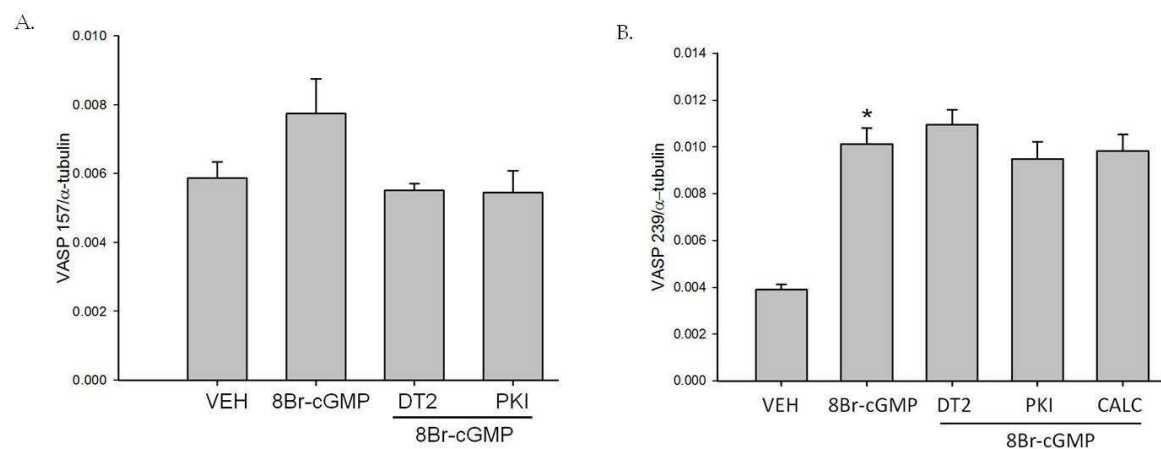
1B, resp.). Notably, in these higher passage cells inhibition of PKC by CALC did not affect phosphorylation at either site versus that of BAY alone. In these cells, inhibition of multiple kinases had no effect on Ser₁₅₇ but any combination of kinase inhibitors inhibited VASP phosphorylation at Ser₂₃₉ (data not shown).



Suppl. Fig. 1. (A) Effect of kinase inhibitors on BAY 41-2272 (BAY)-induced VASP_{Ser157} phosphorylation. Higher passaged ($p > 6$) VSMCs were pretreated with PKI, DT2, DT3, KT, CALC or vehicle for 30 min prior to stimulation with BAY (10 μ M) for 60 minutes ($n=8$). Values are the means \pm SE. * = different from BAY ($P < 0.05$). (B) Effect of kinase inhibitors on BAY-induced VASP_{Ser239} phosphorylation. Higher passaged ($p > 6$) VSMCs were pretreated with PKI, DT2, DT3, KT, CALC or vehicle for 30 min prior to stimulation with BAY (10 μ M) for 60 minutes ($n=9$). Values are the means \pm SE. * = different from vehicle ($P < 0.05$).

3.8 Effect of kinase inhibitors on cyclic nucleotide analog-induced VASP phosphorylation

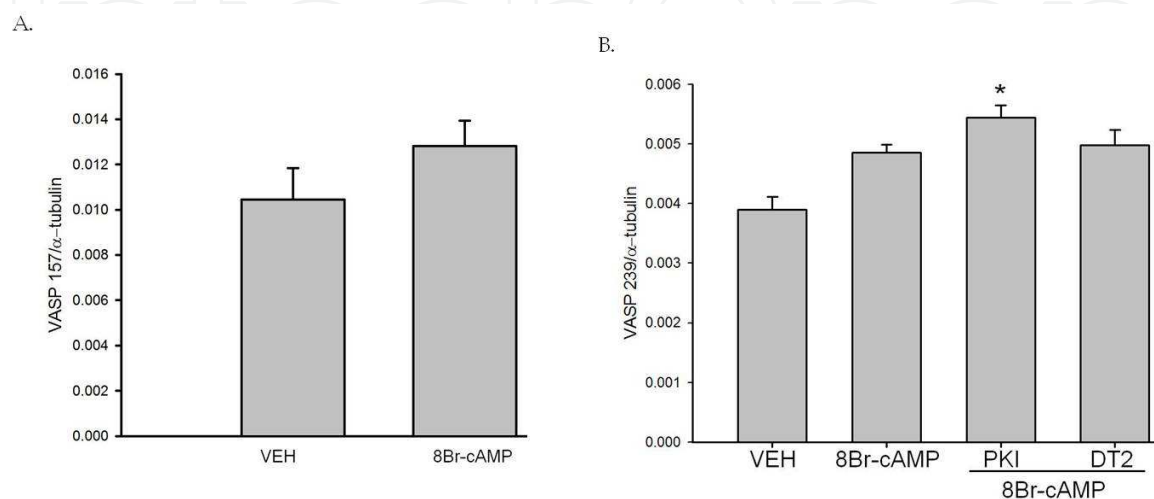
In higher passage VSMCs ($p > 6$), 8-Br-cGMP alone increased phosphorylation at Ser₂₃₉ only (Suppl. Figs. 2A, 2B), and kinase inhibition was without effect at either site.



Suppl. Fig. 2. (A) Effect of kinase inhibitors and 8Br-cGMP on VASP_{Ser157} phosphorylation. VSMCs were pretreated with PKI, DT2 or vehicle for 30 min prior to stimulation with 8Br-cGMP (10 μ M) for 30 minutes ($n=3$). (B) Effect of kinase inhibitors and 8Br-cGMP on VASP_{Ser239} phosphorylation. VSMCs were pretreated with PKI, DT2, CALC or vehicle for

30 min prior to stimulation with 8Br-cGMP (10uM) for 30 minutes (n=21). Values are the means \pm SE. * = different from vehicle ($P < 0.05$).

8-Br-cAMP had no effect on site-specific VASP phosphorylation (Suppl. Fig 3A, 3B). However, PKI further increased 8-Br-cAMP-induced phosphorylation at Ser₂₃₉ (Suppl. Fig. 3B). In VSMCs $p > 6$ any combination of kinase inhibitors did not affect cAMP or cGMP-selective VASP phosphorylation (data not shown).



Suppl. Fig. 3. (A) Effect of 8Br-cAMP on VASP_{Ser157} phosphorylation. VSMCs were stimulated with 8Br-cAMP (10uM) for 30 minutes (n=15). (B) Effect of kinase inhibitors and 8Br-cAMP on VASP_{Ser239} phosphorylation. VSMCs were pretreated with PKI, DT2 or vehicle for 30 min prior to stimulation with 8Br-cAMP (10uM) for 30 minutes (n=20). Values are the means \pm SE. * = different from vehicle ($P < 0.05$).

3.9 Effect of BAY on Kinase expression

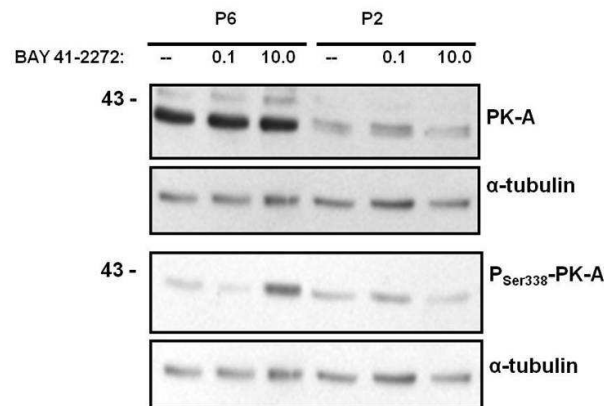
In untreated VSMCs, Western analysis shows that there is an increase in total PKA in passage 6 cells versus passage 2 cells, yet concentration-dependent stimulation with BAY did not alter the amount of total PKA in either cohort (Suppl. Fig. 4A). Interestingly, BAY (at 10 μ M) largely increased the amount of phosphorylated PKA (at Ser₃₃₈) in p6 VSMCs but not in p2 cells (Suppl. Fig. 4A). In comparison, the amount of basal untreated PKG decreased with increasing passage, and stimulation with BAY had no additive effect (Suppl. Fig. 4B).

4. Discussion

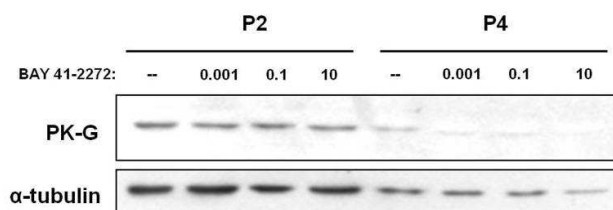
The sGC signal transduction system plays an important regulatory role in cardiovascular disease due to the production of cyclic nucleotides and their impact on downstream effectors. VSMCs primarily regulate vascular tone and contraction and are important in the medial layer of arteries. In animal models of vascular injury, intimal and medial thickening is attributed to phenotypic switching of resident VSMCs and their proliferation and migration from the adventitia and media to the intimal space (Janssens *et al.*, 1998; Kawashima *et al.*, 2001; von der Thusen *et al.*, 2004). Therefore, augmentation of neointimal formation in iatrogenic response to therapeutic intervention compromises flow and

increases the risk of a cardiac event. For that reason understanding the cellular mechanisms involved in vascular growth is of critical importance.

A.



B.



Suppl. Fig. 4. (A) Western analysis for Protein Kinase A (PKA) and phosphorylated-PKASer₃₃₈. VSMCs cytosolic preparations were incubated with antibodies generated against PKA and phospho-PKA. (B) Western analysis for Protein Kinase G (PKG). VSMCs cytosolic preparations were incubated with an antibody generated against PKG.

In this study we provide sound evidence that BAY, a synthetic stimulator of sGC, increases the activity of protein kinases and downstream effectors and that this system has the ability to control growth of VSM. Novel results show that activity from PKA, PKG and PKC has the capacity to increase phosphorylation of cellular proteins including VASP, a multifunctional cytoskeletal protein capable of regulating VSM cell proliferation and migration. Notably, the implication of multiple kinases in the regulation and activation of VASP provides evidence for potential crosstalk among otherwise distinct kinases within the cell. Functionally, strong evidence is presented linking cyclic nucleotide-mediated kinase activation and VASP phosphorylation with inhibition of VSM growth through modulation of proliferation and migration. BAY-induced site-specific VASP phosphorylation is regulated by kinases even though cross-talk exists among these (and perhaps other) kinases in VSM. These data demonstrate the importance of understanding cyclic nucleotide-directed kinases in regulating signaling proteins and their roles for inducing specific cellular responses.

VSMC proliferation, a critical mechanism in vessel remodeling, has been reported to be positively controlled by phosphorylation of VASP at Ser₁₅₇ in VSMCs (Chen *et al.*, 2004). VASP_{Ser157} is the site preferentially phosphorylated by PKA, but evidence suggests that both PKG and PKC can also phosphorylate Ser₁₅₇ (Butt *et al.*, 1994; Chitaley *et al.*, 2004). In this

study we report that inhibition of PKA alone has no effect on Ser₁₅₇ phosphorylation of VASP induced by BAY (Fig 1A); however, in the presence of a PKG inhibitor phosphorylation at this site is increased (Fig 2A). On the other hand, VASP_{Ser239} is the site reported to be preferentially phosphorylated by PKG (Butt *et al.*, 1994), but PKA can also phosphorylate this site (Butt *et al.*, 1994). In this study, inhibition of PKG alone had no effect on VASP phosphorylation at Ser₂₃₉ induced by BAY (Fig. 1B); however, in the presence of an inhibitor of PKC, BAY-induced phosphorylation was increased. These intriguing results demonstrate that there is crosstalk among these kinases in response to VASP phosphorylation induced by BAY: with respect to Ser₁₅₇, PKA and PKG are primarily involved, whereas at Ser₂₃₉ the major kinases are PKA and PKC.

Cyclic nucleotide activity and localization in cells is regulated by PDEs which modulate the levels of cyclic nucleotide levels and maintains them at a steady state. Moreover, kinases have been shown to regulate PDE activity (Bender *et al.*, 2006). It has been reported that PKA phosphorylates and increases the activities of PDE3 and 4 (Bender *et al.*, 2006; Degerman *et al.*, 1997; Houslay *et al.*, 2007), while an increase in cGMP binding and phosphorylation by PKG increases the activity of PDE5 (Bender *et al.*, 2006; Rybalkin *et al.*, 2002). BAY has been shown to increase cyclic nucleotide content in VSMCs (Joshi *et al.*, 2011; Mendeleev *et al.*, 2009); therefore, it is logical that PDE and kinase activity could potentially be modulated by BAY treatment. Preliminary data suggest that with respect to Ser₁₅₇, inhibition of PDE5 increased its phosphorylation while inhibition of PDE3 and PDE4 decreased its phosphorylation in response to BAY. Here we demonstrate that inhibition of PDE3 or PDE5 in the presence of an inhibitor of PKG increases the phosphorylation at this site while inhibition of PDE4 had no effect (Fig 3A). In the presence of PKA inhibition, Ser₁₅₇ phosphorylation was increased and PDE inhibition had no additional effect (Fig 3B). Considering that PDE3 is a cGMP-inhibited PDE, following concomitant inhibition of both PDE5 and PKG, the resulting increase in cAMP and PKA is expected as an enhancement of BAY-induced signaling. The same observation is seen following simultaneous inhibition of PKG and PDE5, as there is an increase in cGMP which could then inhibit PDE3 and increase cAMP leading to additive phosphorylation at Ser₁₅₇. On the other hand, in the presence of an inhibitor of PKA and individual PDE inhibitors, no further phosphorylation is shown at Ser₁₅₇ suggesting that this previously observed inhibitory effect is rescued.

At VASP_{Ser239}, preliminary data suggest that inhibition of PDE activity decreased phosphorylation at this site in response to BAY. Here we demonstrate that in the presence of an inhibitor of PKA or PKG, inhibition of PDEs no longer decreases Ser₂₃₉ phosphorylation and in fact, inhibition of PDE5 with ZAP in the presence of PKI increased Ser₂₃₉ phosphorylation (Fig 3C). These results support involvement of kinases in the regulation of PDEs. In this study we are inhibiting activation of PDEs via kinases as well as inhibiting the actual PDE, thereby increasing the cyclic nucleotide content of the cell and as a result increasing phosphorylation of VASP. This supports the argument that an increase in both cyclic nucleotides in a cell at the same time is inhibitory because two kinases are active simultaneously thereby activating opposing pathways. In addition, these findings confirm the theory of intracellular compartmentalization of second messengers and their effectors as described elsewhere (Di Benedetto *et al.*, 2008; Houslay *et al.*, 2007; Zaccolo *et al.*, 2002).

Activation of kinases in other pathways may negatively regulate phosphorylation of VASP. It is reported that PKG is the primary kinase responsible for phosphorylation of Ser₂₃₉ (Butt

et al., 1994); in turn, PKG inhibition would hinder Ser₂₃₉ phosphorylation and PKA would then become the primary kinase responsible for phosphorylation at this site. To further add to the complexity of these findings and to demonstrate the importance of kinase regulation and localization of proteins we demonstrate that inhibition of PDE5 in the presence of an inhibitor of PKA potentiates the phosphorylation at Ser₂₃₉. This demonstrates that cGMP does indeed directly phosphorylate VASP at this site independent of cAMP/PKA signals (Fig. 3C).

BAY has been shown to increase the content of both cAMP and cGMP in VSMCs (Joshi *et al.*, 2011; Mendeleev *et al.*, 2009); therefore, to directly assess its mechanisms of action and what kinases may be involved in site specific phosphorylation of VASP, cyclic nucleotide analogs which directly activate PKA and PKG were used. 8Br-cAMP is a direct activator of PKA, the kinase which directly phosphorylates Ser₁₅₇ (Butt *et al.*, 1994). As one would expect addition of this analog should increase Ser₁₅₇ phosphorylation of VASP due to the increase in PKA activity. We did not observe an increase with the analog alone (Fig. 4A); however, inhibition of PKA in the presence of the analog significantly increased VASP phosphorylation at this site (Fig. 4A). Interestingly, inhibition of PKG or PKC in the presence of 8Br-cAMP had no effect at Ser₁₅₇. Although PKG is reported to be the primary kinase responsible for phosphorylation of Ser₂₃₉ there could potentially be crosstalk involving other kinases at this site. This observation was evidenced with Ser₂₃₉ phosphorylation whereby inhibition of PKA increased phosphorylation in the presence of the cyclic nucleotide analog (Fig. 4B). These data could provide an argument against the selectivity of the analogs in activating kinases because 8Br-cAMP may be activating PKG or some other protein that in reality is phosphorylating VASP. 8Br-cGMP is a direct activator of PKG and alone has no effect on Ser₁₅₇ but markedly increases Ser₂₃₉ as expected (Fig 5A, 5B). However, inhibition of PKA and PKC increased phosphorylation at Ser₁₅₇ in the presence of 8Br-cGMP (Fig 5A). Inhibition of PKA slightly increased Ser₂₃₉ phosphorylation above that of 8Br-cGMP alone (Fig 5B), while inhibition of either PKG or PKC slightly but not significantly increases phosphorylation. We could infer here that PKA and PKG are competing for the same site; therefore inhibition of PKA increases the phosphorylation at any particular site. Alternatively, we could conclude that PKA negatively regulates phosphorylation of VASP because inhibition of PKA increases phosphorylation of both sites. In any event, these results demonstrate that cyclic nucleotide analogs and BAY use different mechanisms to phosphorylate VASP. This is demonstrated in the results shown here whereby inhibition of both PKG and PKC (Fig. 6) inhibit phosphorylation at Ser₂₃₉. We can conclude that both PKG and PKC are actively involved in phosphorylation of Ser₂₃₉ in response to 8Br-cGMP. In comparison, multiple kinase inhibition had no effect on 8Br-cAMP in its phosphorylation of VASP. These data clearly demonstrate that phosphorylation and thus regulation of VASP at these sites is complex in that all three major protein kinases (PKA/G/C) are involved. Furthermore, BAY, originally characterized as a direct activator of sGC, equally increases both PKA and PKG activity in these cells (Fig. 7). Thus, it appears that PKA may be the more active kinase involved in the phosphorylative control of VASP in VSM.

Direct involvement of PKA in BAY-mediated reduction in proliferation is seen in both the MTT and hemocytometry results in this study, which suggest that PKA activity is necessary for proliferation of VSMCs (Fig 8). The involvement of PKA in proliferation was previously suggested by Chen and colleagues (Chen *et al.*, 2004) where they found that phosphorylation of VASP by PKA stimulates proliferation. The difference between our study and that of

Chen and associates is that our study uses rat primary VSMCs and phosphorylation of VASP was in response to a pharmacologic stimulus, whereas theirs was done in VASP knockout (KO) mice where wild type or mutant VASP was transduced and phosphorylation induced by NO. These results suggest that the cellular mechanism of inhibition of cell growth induced by BAY is precise and unique to the drug. Interestingly, in our study the effects of PKG on the ability of BAY to inhibit proliferation in the MTT and BrdU assays (Figs. 8A, 8B) is similar to that of PKA; however, according to hemocytometric analysis these effects are not apparent until a later timepoint of 72 hrs (Fig 8C).

In the study by Chen and others (Chen *et al.*, 2004), the investigators show that genetic KO of VASP_{Ser239} promotes migration. In our previous study (Joshi *et al.*, 2011), we showed that BAY phosphorylates Ser₂₃₉ and in turn inhibits migration, which appears specific as a mechanism of action since inhibition of PKG fully reversed this effect. In the current study, data support these previous findings. Interestingly, the effect that PKG has on migration is similar to what is seen with PKC. Considering the influence of 8Br-cGMP on VASP_{Ser239} (Fig. 6), these data support the involvement of PKG and PKC with VASP phosphorylation at Ser₂₃₉ and their regulatory role in migration of VSMCs.

To summarize these functional data, with respect to proliferation VASP_{Ser157} and PKA appear to be more involved and for migration VASP_{Ser239} and PKG may be more involved in VSMCs. In an instance where one kinase is reduced or rendered dysfunctional, other kinases may compensate providing multiple kinase regulation of any particular functional event. Additionally, these data demonstrate that PDEs help to maintain tight regulation of cyclic nucleotides in these cells. Inhibition of PDEs increases the activity of proteins involved in phosphorylation of VASP, and inhibition or feedback regulation occurs because both cyclic nucleotides are high at the same time demonstrating the importance of compartmentalization of proteins. It is also possible that BAY increases the activity of some alternate pathways that may be involved with VASP phosphorylation in these cells.

In separate experiments, higher passaged cells were used to evaluate the influence of phenotypic switching in the response to cyclic nucleotide and kinase signaling. In these cells (p>6) treated with BAY, inhibition of PKA increased phosphorylation of VASP at Ser₁₅₇ but had no effect on Ser₂₃₉, while inhibition of PKG increased phosphorylation of Ser₁₅₇ but had no effect on Ser₂₃₉ (Suppl. Fig. 1). On the other hand, inhibition of any kinase in the presence of a cyclic nucleotide analog had no effect (Suppl. Figs 2-3), except in the presence of 8Br-cAMP at Ser₂₃₉ (suppl. Fig. 3B). We also show that the amounts of total PKA and phosphorylated PKA increase and that the amount of PKG protein decreases with passage (suppl. Figs. 5A, 5B). Thus, these signaling events and in particular kinase expression must be considered with elevated passage as a model of phenotypic changes associated with injury or disease.

5. Conclusion

In conclusion, in this study we demonstrate that: 1) BAY increases phosphorylation of VASP at both Ser₁₅₇ and Ser₂₃₉; 2) BAY increases both PKA and PKG activity; 3) BAY reduces proliferation and migration in VSMCs; 4) inhibition of PKA in response to BAY augments inhibition of proliferation of VSMCs yet has no effect on migration; 5) multiple kinases appear to be involved in regulation of VASP phosphorylation; 6) PKA appears to be the kinase that is most active in these cells in response to BAY, and 7) kinases are involved in regulation of PDEs

that regulate VASP phosphorylation in VSMCs. These findings provide valuable details about the biochemical cell signaling associated with cyclic nucleotide second messengers in VSM and highlight BAY as a potential anti-growth modulator in VSM.

6. Acknowledgements

We would like to acknowledge Jonathan C. Fox and Patti Shaver for assistance with isolation and culture of rat primary vascular smooth muscle cells. This project was supported by Award Number R01HL081720 from the National Institutes of Health National Heart, Lung, and Blood Institute (NHLBI), by ARRA Award Number R01HL081720-03S2, and by Post-doctoral Research Supplement Award Number R01HL081720-05S1 from the NHLBI. This content is solely the responsibility of the authors and does not necessarily represent the official views of the NHLBI or the NIH.

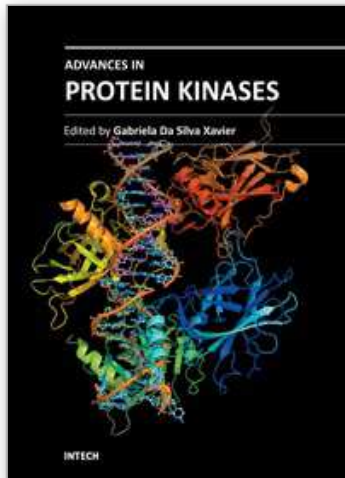
7. References

- Abel K, Mieskes G, Walter U (1995). Dephosphorylation of the focal adhesion protein VASP in vitro and in intact human platelets. *FEBS Lett* 370(3): 184-188.
- Bender AT, Beavo JA (2006). Cyclic nucleotide phosphodiesterases: molecular regulation to clinical use. *Pharmacol Rev* 58(3): 488-520.
- Benz PM, Blume C, Seifert S, Wilhelm S, Waschke J, Schuh K, et al. (2009). Differential VASP phosphorylation controls remodeling of the actin cytoskeleton. *J Cell Sci* 122(Pt 21): 3954-3965.
- Blume C, Benz PM, Walter U, Ha J, Kemp BE, Renne T (2007). AMP-activated protein kinase impairs endothelial actin cytoskeleton assembly by phosphorylating vasodilator-stimulated phosphoprotein. *J Biol Chem* 282(7): 4601-4612.
- Boerrigter G, Burnett JC, Jr. (2007). Nitric oxide-independent stimulation of soluble guanylate cyclase with BAY 41-2272 in cardiovascular disease. *Cardiovasc Drug Rev* 25(1): 30-45.
- Bononi A, Agnoletto C, De Marchi E, Marchi S, Patergnani S, Bonora M, et al. (2011). Protein kinases and phosphatases in the control of cell fate. *Enzyme Res* 2011: 329098.
- Butt E, Abel K, Krieger M, Palm D, Hoppe V, Hoppe J, et al. (1994). cAMP- and cGMP-dependent protein kinase phosphorylation sites of the focal adhesion vasodilator-stimulated phosphoprotein (VASP) in vitro and in intact human platelets. *J Biol Chem* 269(20): 14509-14517.
- Chen H, Kovar J, Sissons S, Cox K, Matter W, Chadwell F, et al. (2005). A cell-based immunocytochemical assay for monitoring kinase signaling pathways and drug efficacy. *Anal Biochem* 338(1): 136-142.
- Chen L, Daum G, Chitaley K, Coats SA, Bowen-Pope DF, Eigenthaler M, et al. (2004). Vasodilator-stimulated phosphoprotein regulates proliferation and growth inhibition by nitric oxide in vascular smooth muscle cells. *Arterioscler Thromb Vasc Biol* 24(8): 1403-1408.
- Chitaley K, Chen L, Galler A, Walter U, Daum G, Clowes AW (2004). Vasodilator-stimulated phosphoprotein is a substrate for protein kinase C. *FEBS Lett* 556(1-3): 211-215.
- Christodoulides N, Durante W, Kroll MH, Schafer AI (1995). Vascular smooth muscle cell heme oxygenases generate guanylyl cyclase-stimulatory carbon monoxide. *Circulation* 91(9): 2306-2309.

- Cohen P, Frame S (2001). The renaissance of GSK3. *Nat Rev Mol Cell Biol* 2(10): 769-776.
- Cohen S, Fleischmann R (2010). Kinase inhibitors: a new approach to rheumatoid arthritis treatment. *Curr Opin Rheumatol* 22(3): 330-335.
- Degerman E, Belfrage P, Manganiello VC (1997). Structure, localization, and regulation of cGMP-inhibited phosphodiesterase (PDE3). *J Biol Chem* 272(11): 6823-6826.
- Di Benedetto G, Zoccarato A, Lissandron V, Terrin A, Li X, Houslay MD, *et al.* (2008). Protein kinase A type I and type II define distinct intracellular signaling compartments. *Circ Res* 103(8): 836-844.
- Fry DW, Kraker AJ, McMichael A, Ambroso LA, Nelson JM, Leopold WR, *et al.* (1994). A specific inhibitor of the epidermal growth factor receptor tyrosine kinase. *Science* 265(5175): 1093-1095.
- Gibbons GH, Dzau VJ (1994). The emerging concept of vascular remodeling. *N Engl J Med* 330(20): 1431-1438.
- Hanks SK, Quinn AM (1991). Protein kinase catalytic domain sequence database: identification of conserved features of primary structure and classification of family members. *Methods Enzymol* 200: 38-62.
- Heidenreich KA, Toledo SP, Kenner KA (1991). Regulation of protein phosphorylation by insulin and insulin-like growth factors in cultured fetal neurons. *Adv Exp Med Biol* 293: 379-384.
- Herity NA, Ward MR, Lo S, Yeung AC (1999). Review: Clinical aspects of vascular remodeling. *J Cardiovasc Electrophysiol* 10(7): 1016-1024.
- Houslay MD, Baillie GS, Maurice DH (2007). cAMP-Specific phosphodiesterase-4 enzymes in the cardiovascular system: a molecular toolbox for generating compartmentalized cAMP signaling. *Circ Res* 100(7): 950-966.
- Hug H, Sarre TF (1993). Protein kinase C isoenzymes: divergence in signal transduction? *Biochem J* 291 (Pt 2): 329-343.
- Ignarro LJ (1991). Heme-dependent activation of guanylate cyclase by nitric oxide: a novel signal transduction mechanism. *Blood Vessels* 28(1-3): 67-73.
- Ignarro LJ, Harbison RG, Wood KS, Kadowitz PJ (1986). Activation of purified soluble guanylate cyclase by endothelium-derived relaxing factor from intrapulmonary artery and vein: stimulation by acetylcholine, bradykinin and arachidonic acid. *J Pharmacol Exp Ther* 237(3): 893-900.
- Ignarro LJ, Kadowitz PJ (1985). The pharmacological and physiological role of cyclic GMP in vascular smooth muscle relaxation. *Annu Rev Pharmacol Toxicol* 25: 171-191.
- Janssens S, Flaherty D, Nong Z, Varenne O, van Pelt N, Haustermans C, *et al.* (1998). Human endothelial nitric oxide synthase gene transfer inhibits vascular smooth muscle cell proliferation and neointima formation after balloon injury in rats. *Circulation* 97(13): 1274-1281.
- Joshi CN, Martin DN, Fox JC, Mendeleev NN, Brown TA, Tulis DA (2011). The Soluble Guanylate Cyclase Stimulator BAY41-2272 Inhibits Vascular Smooth Muscle Growth through the PKA and PKG Pathways. *J Pharmacol Exp Ther* 339: 394-402.
- Karin M (2005). Inflammation-activated protein kinases as targets for drug development. *Proc Am Thorac Soc* 2(4): 386-390; discussion 394-385.
- Kawashima S, Yamashita T, Ozaki M, Ohashi Y, Azumi H, Inoue N, *et al.* (2001). Endothelial NO synthase overexpression inhibits lesion formation in mouse model of vascular remodeling. *Arterioscler Thromb Vasc Biol* 21(2): 201-207.

- Krause M, Bear JE, Loureiro JJ, Gertler FB (2002). The Ena/VASP enigma. *J Cell Sci* 115(Pt 24): 4721-4726.
- Kwiatkowski AV, Gertler FB, Loureiro JJ (2003). Function and regulation of Ena/VASP proteins. *Trends Cell Biol* 13(7): 386-392.
- Lissandron V, Zaccolo M (2006). Compartmentalized cAMP/PKA signalling regulates cardiac excitation-contraction coupling. *J Muscle Res Cell Motil* 27(5-7): 399-403.
- Liu XM, Peyton KJ, Mendeleev NN, Wang H, Tulis DA, Durante W (2009). YC-1 stimulates the expression of gaseous monoxide-generating enzymes in vascular smooth muscle cells. *Mol Pharmacol* 75(1): 208-217.
- Lucas KA, Pitari GM, Kazerounian S, Ruiz-Stewart I, Park J, Schulz S, *et al.* (2000). Guanylyl cyclases and signaling by cyclic GMP. *Pharmacol Rev* 52(3): 375-414.
- Manning G, Whyte DB, Martinez R, Hunter T, Sudarsanam S (2002). The protein kinase complement of the human genome. *Science* 298(5600): 1912-1934.
- Mayers RM, Leighton B, Kilgour E (2005). PDH kinase inhibitors: a novel therapy for Type II diabetes? *Biochem Soc Trans* 33(Pt 2): 367-370.
- Mendeleev NN, Williams VS, Tulis DA (2009). Antigrowth properties of BAY 41-2272 in vascular smooth muscle cells. *J Cardiovasc Pharmacol* 53(2): 121-131.
- Mitchison TJ, Cramer LP (1996). Actin-based cell motility and cell locomotion. *Cell* 84(3): 371-379.
- Mullershausen F, Russwurm M, Friebe A, Koesling D (2004). Inhibition of phosphodiesterase type 5 by the activator of nitric oxide-sensitive guanylyl cyclase BAY 41-2272. *Circulation* 109 (14): 1711-1713.
- Ozaki M, Kawashima S, Yamashita T, Hirase T, Namiki M, Inoue N, *et al.* (2002). Overexpression of endothelial nitric oxide synthase accelerates atherosclerotic lesion formation in apoE-deficient mice. *J Clin Invest* 110(3): 331-340.
- Pawson T, Nash P (2000). Protein-protein interactions define specificity in signal transduction. *Genes Dev* 14(9): 1027-1047.
- Reinhard M, Jarchau T, Walter U (2001). Actin-based motility: stop and go with Ena/VASP proteins. *Trends Biochem Sci* 26(4): 243-249.
- Roger S, Badier-Commander C, Paysant J, Cordi A, Verbeuren TJ, Feletou M (2010). The anti-aggregating effect of BAY 41-2272, a stimulator of soluble guanylyl cyclase, requires the presence of nitric oxide. *Br J Pharmacol* 161(5): 1044-1058.
- Rudic RD, Shesely EG, Maeda N, Smithies O, Segal SS, Sessa WC (1998). Direct evidence for the importance of endothelium-derived nitric oxide in vascular remodeling. *J Clin Invest* 101(4): 731-736.
- Rybalkin SD, Rybalkina IG, Feil R, Hofmann F, Beavo JA (2002). Regulation of cGMP-specific phosphodiesterase (PDE5) phosphorylation in smooth muscle cells. *J Biol Chem* 277(5): 3310-3317.
- Scott JD (1991). Cyclic nucleotide-dependent protein kinases. *Pharmacol Ther* 50(1): 123-145.
- Shi Y, Pieniek M, Fard A, O'Brien J, Mannion JD, Zalewski A (1996). Adventitial remodeling after coronary arterial injury. *Circulation* 93(2): 340-348.
- Siow RC, Sato H, Mann GE (1999). Heme oxygenase-carbon monoxide signalling pathway in atherosclerosis: anti-atherogenic actions of bilirubin and carbon monoxide? *Cardiovasc Res* 41(2): 385-394.

- Stasch JP, Becker EM, Alonso-Alija C, Apeler H, Dembowski K, Feurer A, *et al.* (2001). NO-independent regulatory site on soluble guanylate cyclase. *Nature* 410(6825): 212-215.
- Stasch JP, Hobbs AJ (2009). NO-independent, haem-dependent soluble guanylate cyclase stimulators. *Handb Exp Pharmacol*(191): 277-308.
- Taylor SS, Buechler JA, Yonemoto W (1990). cAMP-dependent protein kinase: framework for a diverse family of regulatory enzymes. *Annu Rev Biochem* 59: 971-1005.
- Taylor SS, Knighton DR, Zheng J, Ten Eyck LF, Sowadski JM (1992). cAMP-dependent protein kinase and the protein kinase family. *Faraday Discuss*(93): 143-152.
- Thomson DM, Ascione MP, Grange J, Nelson C, Hansen MD (2011). Phosphorylation of VASP by AMPK alters actin binding and occurs at a novel site. *Biochem Biophys Res Commun*.
- Tulis DA, Bohl Masters KS, Lipke EA, Schiesser RL, Evans AJ, Peyton KJ, *et al.* (2002). YC-1-mediated vascular protection through inhibition of smooth muscle cell proliferation and platelet function. *Biochem Biophys Res Commun* 291(4): 1014-1021.
- Tulis DA, Durante W, Liu X, Evans AJ, Peyton KJ, Schafer AI (2001a). Adenovirus-mediated heme oxygenase-1 gene delivery inhibits injury-induced vascular neointima formation. *Circulation* 104(22): 2710-2715.
- Tulis DA, Durante W, Peyton KJ, Evans AJ, Schafer AI (2001b). Heme oxygenase-1 attenuates vascular remodeling following balloon injury in rat carotid arteries. *Atherosclerosis* 155(1): 113-122.
- Tulis DA, Keswani AN, Peyton KJ, Wang H, Schafer AI, Durante W (2005). Local administration of carbon monoxide inhibits neointima formation in balloon injured rat carotid arteries. *Cell Mol Biol (Noisy-le-grand)* 51(5): 441-446.
- Vasioukhin V, Bauer C, Yin M, Fuchs E (2000). Directed actin polymerization is the driving force for epithelial cell-cell adhesion. *Cell* 100(2): 209-219.
- von der Thusen JH, Fekkes ML, Passier R, van Zonneveld AJ, Mainfroid V, van Berkel TJ, *et al.* (2004). Adenoviral transfer of endothelial nitric oxide synthase attenuates lesion formation in a novel murine model of postangioplasty restenosis. *Arterioscler Thromb Vasc Biol* 24(2): 357-362.
- Xiang YK (2011). Compartmentalization of beta-adrenergic signals in cardiomyocytes. *Circ Res* 109(2): 231-244.
- Zaccolo M, Pozzan T (2002). Discrete microdomains with high concentration of cAMP in stimulated rat neonatal cardiac myocytes. *Science* 295(5560): 1711-1715.
- Zhuang S, Nguyen GT, Chen Y, Gudi T, Eigenthaler M, Jarchau T, *et al.* (2004). Vasodilator-stimulated phosphoprotein activation of serum-response element-dependent transcription occurs downstream of RhoA and is inhibited by cGMP-dependent protein kinase phosphorylation. *J Biol Chem* 279(11): 10397-10407.



Advances in Protein Kinases

Edited by Dr. Gabriela Da Silva Xavier

ISBN 978-953-51-0633-3

Hard cover, 374 pages

Publisher InTech

Published online 05, June, 2012

Published in print edition June, 2012

Proteins are the work horses of the cell. As regulators of protein function, protein kinases are involved in the control of cellular functions via intricate signalling pathways, allowing for fine tuning of physiological functions. This book is a collaborative effort, with contribution from experts in their respective fields, reflecting the spirit of collaboration - across disciplines and borders - that exists in modern science. Here, we review the existing literature and, on occasions, provide novel data on the function of protein kinases in various systems. We also discuss the implications of these findings in the context of disease, treatment, and drug development.

How to reference

In order to correctly reference this scholarly work, feel free to copy and paste the following:

Shaquria P. Adderley, Chintamani N. Joshi, Danielle N. Martin, Shayna Mooney and David A. Tulis (2012). Multiple Kinase Involvement in the Regulation of Vascular Growth, *Advances in Protein Kinases*, Dr. Gabriela Da Silva Xavier (Ed.), ISBN: 978-953-51-0633-3, InTech, Available from:
<http://www.intechopen.com/books/advances-in-protein-kinases/multiple-kinase-involvement-in-the-regulation-of-vascular-growth>

INTECH
open science | open minds

InTech Europe

University Campus STeP Ri
Slavka Krautzeka 83/A
51000 Rijeka, Croatia
Phone: +385 (51) 770 447
Fax: +385 (51) 686 166
www.intechopen.com

InTech China

Unit 405, Office Block, Hotel Equatorial Shanghai
No.65, Yan An Road (West), Shanghai, 200040, China
中国上海市延安西路65号上海国际贵都大饭店办公楼405单元
Phone: +86-21-62489820
Fax: +86-21-62489821

© 2012 The Author(s). Licensee IntechOpen. This is an open access article distributed under the terms of the [Creative Commons Attribution 3.0 License](#), which permits unrestricted use, distribution, and reproduction in any medium, provided the original work is properly cited.

IntechOpen

IntechOpen