

We are IntechOpen, the world's leading publisher of Open Access books Built by scientists, for scientists

4,800

Open access books available

122,000

International authors and editors

135M

Downloads

Our authors are among the

154

Countries delivered to

TOP 1%

most cited scientists

12.2%

Contributors from top 500 universities



WEB OF SCIENCE™

Selection of our books indexed in the Book Citation Index
in Web of Science™ Core Collection (BKCI)

Interested in publishing with us?
Contact book.department@intechopen.com

Numbers displayed above are based on latest data collected.

For more information visit www.intechopen.com



New Models for the *In Vitro* Study of Liver Toxicity: 3D Culture Systems and the Role of Bioreactors

Giovanna Mazzoleni and Nathalie Steimberg
*Laboratory of Tissue Engineering, General Pathology & Immunology Unit
Faculty of Medicine and Surgery, University of Brescia,
Italy*

1. Introduction

Present in all animal species, even if less developed in the lowest classes of the animal kingdom, the liver fulfils many vital functions of the utmost importance for the organism's survival. In adult humans, the biological significance of liver is attested by its anatomical localisation, its volume, its complexity, and by the density of the cellular elements it is composed of. Located in the right upper quadrant of the abdominal cavity, just below the diaphragm (Fig. 1), the liver represents, as a matter of fact, the largest visceral organ in the human body (about 2.5% of the dry body weight of an adult), and its parenchyma is constituted of more than 300 billion cells (Conti, 2005).

Physiological investigations have assigned to the liver a complex array of more than 500 different functions, the majority of which still remain unknown in their molecular mechanisms and controls. These functions include a number of key metabolic and regulatory activities, as well as processes crucial to the organism's defence (Arias *et al.*, 2009). The principal hepatic functions are schematised in Fig. 2. Indeed, besides carrying a central role in the metabolism of carbohydrates, lipids and proteins, the liver regulates other critical homeostatic functions, such as endocrine activity and haemostasis (synthesis/activation/catabolism of hormonal compounds, and of the majority of coagulation's/fibrinolysis' factors and inhibitors), and it directly acts as an integrant part of the systemic reaction to injury by, for example, modulating the immune response and synthesizing proteins from the "acute phase" (Nahmias *et al.*, 2006). In addition to its multiple metabolic activities, the liver also represents the first line of defence of the whole organism against exogenous or toxic substances. The liver is, in effect, the major site for inactivation of toxins and xenobiotics, favours their removal from the blood and further elimination from the organism through bile secretion (processes of biotransformation and excretion)¹ (Arias *et al.*, 2009).

¹ Biotransformation of drugs, xenobiotics, toxins and endogenous compounds.

Part of lipophilic compounds can accumulate in the body (mainly in fat and bone tissues) or, alternatively, they need to be transformed in hydrophilic substances, in order to be more readily eliminated (excreted). Most of drugs are poorly hydrosoluble, and are metabolised (biotransformed) mainly at the hepatic level. Biotransformation process is the principal factor that can affect the overall

The importance of this organ and the impossibility to substitute artificially its multiple activities, justify, therefore, the serious clinical consequences of its dysfunction: until now, in industrialized countries, liver failure (acute and chronic) is among the top ten most frequent causes of death (Popovic & Kozak, 1998). A fundamental and typical feature of liver lies in the species-specificity of its functional characteristics and susceptibility to injury, elements that, both, make animal models commonly used for patho-physiological and pharmacotoxicological studies, inadequate and poorly informative (or predictive) for humans (Rangarajan *et al.*, 2004; Sivaraman *et al.*, 2005). Examples are adverse drug reactions that occur in humans, which, being specifically based on liver metabolism or on hepatocellular sensitivity, are unpredictable or poorly understood (Park *et al.*, 2005).

To date, notwithstanding the long time period required (more than ten years), and the high financial investment necessary for the development of any new drug (estimated at around one billion Euros per molecule, of which, at least, one-fifth is used exclusively for toxicological investigations on hepatic function), almost two-thirds of the compounds that reach the phase III of clinical trials, demonstrate significant hepatotoxic effects in humans, which prevent their approval. Moreover, it is noteworthy that the hepatic toxicity (including idiosyncratic and chronic toxicity) unpredicted by the current experimental protocols represents more than one third of all the causes responsible for the withdrawal from the market of already approved drugs (O'Brien *et al.*, 2004; Whitebread *et al.*, 2005). Lastly, drug-induced hepatotoxicity is a major clinical pitfall, accounting for 50% of all cases of acute liver failure. From the above considerations, it is, therefore, clear how liver plays a unique and central role in toxicological studies: first, because it is critical in the pharmacokinetics of chemicals, due to its functions of biotransformation and excretion of substances, and, second, since it represent a foremost target of organ-specific adverse effects of drugs and xenobiotics.

In order to lessen and offset hepatotoxic effects, a large number of methods were developed and are currently applied in risk assessment procedures (*in vitro* and *in vivo* methods, human clinical trials, clinical case reports, etc.), or in toxicological/epidemiological studies (observation of the exposure-induced effects on human health), aimed to identify potential human hazards. Some of these methods are presented in Table 1, focusing on their features in relation to the fundamental characteristics required to fulfil the process of risk assessment.

therapeutic and toxic profile of a drug; it can lead to detoxification, excretion, or, less frequently, to bioactivation of the chemical compound, being, thus, responsible for its biological activity, pharmacokinetics and clearance (Brandon *et al.*, 2003). Biotransformation occurs in three different phases: metabolic phases I and II, and transport phase III. The phase I reactions (functionalization step) include oxidation, reduction, or hydrolysis enzymatic reactions, that are, mainly, catalysed by the cytochrome P450 (CYP)-depending and flavin monooxygenase superfamily enzymes. Part of these phase I metabolites can be eliminated by biliary excretion, whereas another part can be metabolised by the phase II reactions, which allow to conjugate polar compounds (and metabolites) to water-soluble groups (glucuronic acid, sulphate, acetate, glycine, glutathione or methyl and acetyl groups), that render the derivatives much more soluble. Hydrophilic derivatives can then be excreted (mainly by kidney, even if liver excretion through bile also takes place). The third phase of compound biotransformation involves active membrane transporters, which, in hepatocytes, are located at their two polar surface domains. Apical and canalicular ATP-binding cassette (ABC) family of drug transporters are responsible for xenobiotic clearance (or bile secretion); basolateral solute carrier transporters, such as, for example, organic anion transporters (OATs), organic cation transporters (OCTs), and organic anion-transporting polypeptides (OATPs), are involved in the uptake of compound from the blood (Pauli-Magnus & Meier, 2003; Omiecinski *et al.*, 2010).

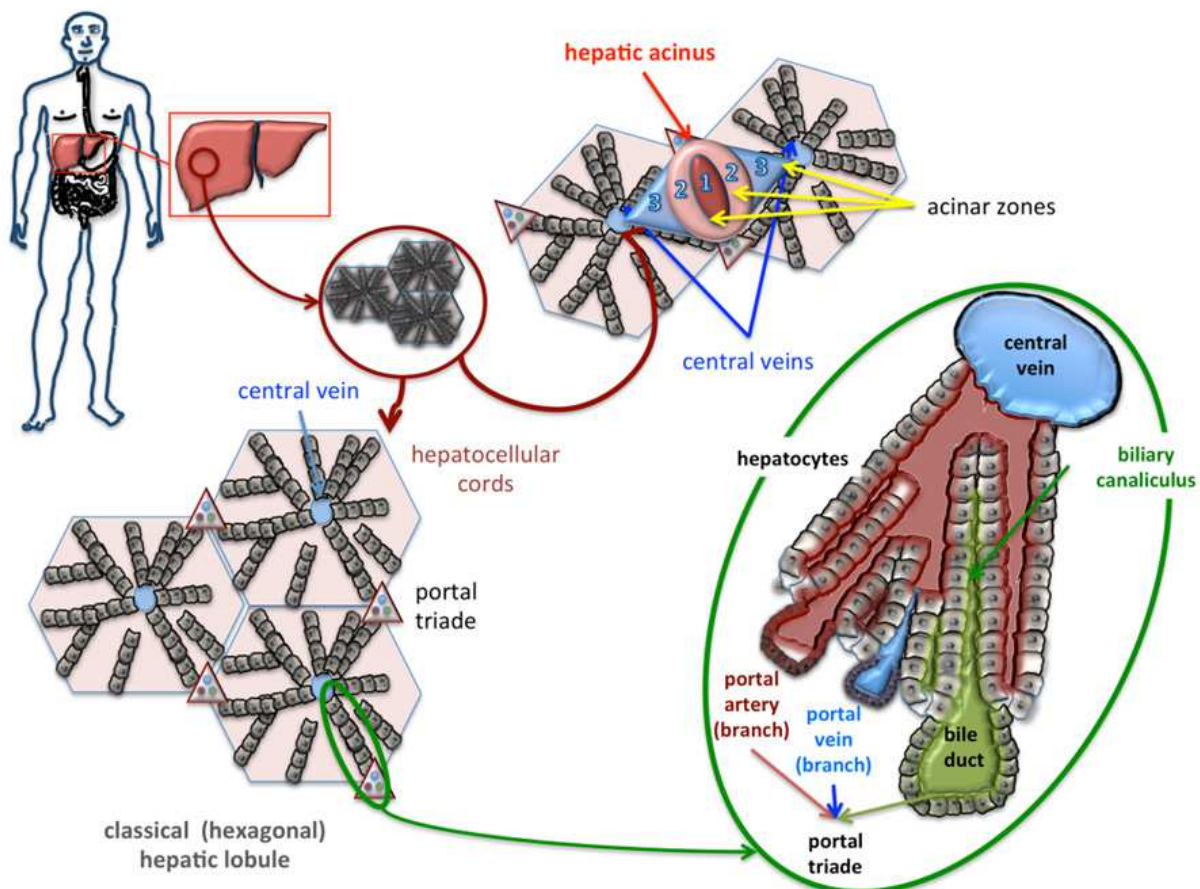


Fig. 1. Schematic view of the liver: location, macroscopical and microscopical organisation.

Since each model possesses advantages (and limits), the most promising strategy to assess the toxicological risk of substances and drugs, should be, at present, a combination of all the information obtained from these various models (integrated testing strategy). Table 2 lists the principal models currently used for hepatotoxicity studies.

Nevertheless, the predictive value for humans of current pre-clinical safety assessment systems is still limited and largely insufficient for a correct estimation of clinically relevant drug-drug interactions (DDIs) and pharmacodynamics/toxicological properties of compounds (ADMET profile) (Soars *et al.*, 2007). Significant inter-individual variability and great inter-species differences in liver functions, that make animal models inadequate for the safety testing of drugs and xenobiotics, have produced the necessity to develop new *in vitro* models, able to better reproduce or mimic the function of the human liver. In the last decades this necessity has already stimulated intense research activity, sustained by significant financial investments. The development of methods (and models) alternative to animal experimentation, along with the approval of their use, either in basic research, or in the more complex field of pharmaco-toxicology, has known a noteworthy expansion in the last twenty years² (see Table 2).

² "Alternative" methods and the 3R's principle.

In 1959, Russel and Burch introduced, for the first time, the concept of methods "alternative" to experimental animal models (Russel & Burch, 1959). The authors defined as "alternative" any method that can be used in order to *Replace*, *Reduce* and *Refine* (3R's principle) the use of animals in biomedical

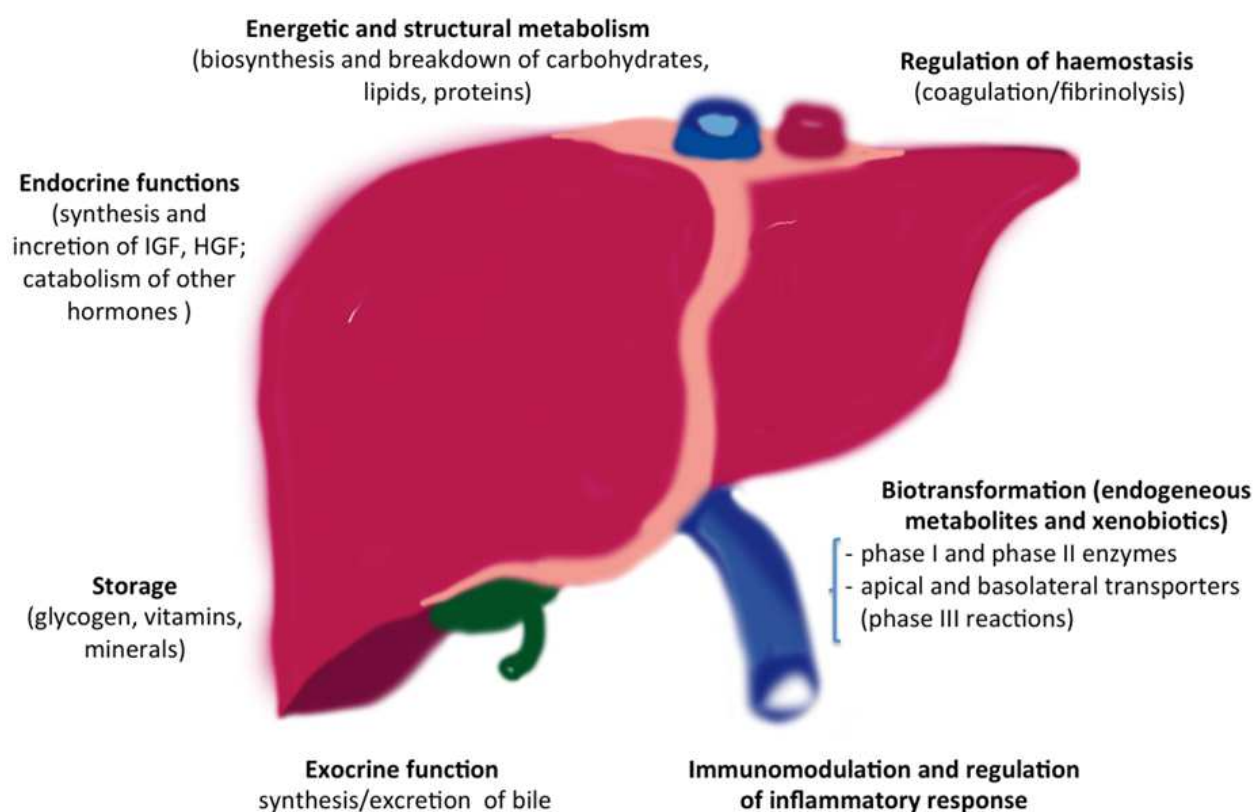




Fig. 2. Schematic representation of the principal liver's functions.

However, due to the high level of specialisation and complexity of the hepatic parenchyma, with its specific intra-lobular "zonal" organisation (Christoffles *et al.*, 1999), and given the peculiar sensibility of its cellular elements to even minimal environmental changes, none among the traditional and more widespread *in vitro* liver-derived models routinely available, seems to possess satisfactory features to be considered as a suitable model of the organ *in vivo* (Brandon *et al.*, 2003; Guillouzo & Guguen-Guillouzo, 2008). New approaches require, actually, the generation (and validation) of human-specific *in vitro* liver-derived test

research, testing or education. The basis of the 3R's principle is the aim to improve ethical standards and animal welfare in *in vivo* experimental procedures, by: i) **replacing**, as much as possible, *in vivo* models (use of alternative methods, i.e. *in vitro*, *ex vivo* and *in silico* approaches), ii) **reducing** the number of animals needed for experimental objectives, and iii) **refining** the experimental procedures, in order to reduce animal sufferance (pain, stress, discomfort). Until now, despite the great political and economical efforts that have been undertaken worldwide during the last two decades (especially by EU, US and other industrialised countries, such as Canada and Japan) to comply with the 3R's strategy (Mazzoleni and Steimberg, 2010; Hartung, 2010), only few alternative methods have been validated for regulatory toxicology and efficacy testing of chemicals. The Organization for Economic Co-Operation and Development (OECD), which represents 30 countries in the Americas (including the United States), Europe, and Asia, provides a collection of internationally harmonized testing methods for a number of toxicological endpoints using *in vivo*, *in vitro*, and even alternative approaches (OECD "Guidelines for the Testing of Chemicals"). For up-to-date information on the *Alternatives to Animal Testing*, see also "Altweb - the Alternatives to Animal Testing Web Site" <http://altweb.jhsph.edu/>), and, for specific bibliography, "ALTBIB - Resources on Alternatives to the Use of Live Vertebrates in Biomedical Research and Testing" at <http://toxnet.nlm.nih.gov/altbib.html>. On the web, **AltTox.org**, is a website dedicated to advancing non-animal methods of toxicity testing through online discussion and information exchange (<http://alttox.org/>).

Method 		<i>In vitro</i> (cell-based studies)	<i>In vivo</i> (animal-based studies)	Human clinical trials (volunteers)	Evidence-based toxicology, human exposure, epidemiology
Remark 					
Reliability of the predictive studies	single organ/tissue	+/-	+/-	++	+++
	whole human population: multifactorial aspects, sex, race, age, healthy or pathological conditions	-	-	+/-	+++
Capability to mirror whole organism's response (systemic response, immune and hormonal regulation; all aspects of ADMET and DIDs) (*)		--	+++	+++	+++
Specific toxicity assessment (targeting liver-specific effects and "zonal" toxicity) (**)		-/+	++	++	++++
Range of lethal and non lethal endpoints (acute toxicity)		+++ (IC50)	++ (DL50 + LOEL)	--	Not applicable
Chronic toxicity assessment		-	++	+/-	+++
Wide-range investigations (time-/dose-dependent studies without inter-individual variability, repeated-dose effects, etc.)		+++	++	-	+++
Complex mixtures testing		+++	+++	-	+
Mechanistic studies		+++	++	+/-	+/- (macroscopic effect)
Reproducibility (control of experimental/testing conditions)		+++	+/-	+/-	-
Validation of the systems		+ (some endpoints)	++	Not applicable	Not applicable

Method ----- Remark	<i>In vitro</i> (cell-based studies)	<i>In vivo</i> (animal-based studies)	Human clinical trials (volunteers)	Evidence-based toxicology, human exposure, epidemiology
Ethical features (3R's principle; environmental reduction of potentially toxic wastes, etc.)	+++	-	+	+++
Cost	+	++++	++++	++
General remarks	Validated models are still insufficient to be fully predictive for humans	Animal use, even if still necessary, should be reduced as much as possible	Should be performed after exhaustive pre-clinical studies on accurate/validated models	By reducing pre-clinical, clinical and post-clinical toxicity, epidemiological studies could be reduced

(*) ADMET: absorption, distribution, metabolism, excretion, and toxicity; DIDs: drug-drug interactions.

(**) Zonal toxicity: specific peri-central/peri-portal toxic effects (Allen *et al.*, 2005).

Table 1. Comparison of the various liver models employed in hepatotoxicity studies.

model systems, which are able to give answers at the physiological level, and to be relevant to human outcomes. While consistent evidence demonstrates the breaking points of traditional *in vitro* models (static culture in monolayer) in reproducing the behaviour and physiological response of various tissues (the hepatic one, in particular), contemporarily, three-dimensional (3D) systems are achieving an increasing status (Mazzoleni *et al.*, 2009). In effect, the more promising results seem, at present, to derive from the 3D techniques of culture, that, by guaranteeing the preservation of at least some characteristics of the complex hepatic microenvironment, can favour cell survival and the *in vitro* expression of the liver-specific differentiated phenotype, allowing, in such a way, the generation of more reliable and predictive hepatic test models for human investigations (Shvartsman *et al.*, 2009).

In the present chapter, the principal models available for the *in vitro* study of liver functions are reviewed. Moreover, the contribution of new emerging technologies and tissue engineering, as basis for the conception of innovative hepatic models, the relevance of 3D bio-constructs, as reliable liver analogues, and their relative advantages and drawbacks in the process of being developed/validated, is discussed. A particular attention is given to the model systems based on the use of dynamic bioreactors, and, more specifically, on the use of the *Rotary Cell Culture System* (RCCS™, Synthecon, Inc.) device.

2. Currently available liver-derived *in vitro* models and the role of liver-specific microenvironment

The need for studying hepatic functions, and for elucidating the molecular mechanisms at their basis, has resulted, over time, in the development of a huge number of liver-derived models and systems, that has not been equalled in the case of any other human organ/tissue (see Table 2).

Models	Advantages	Drawbacks	References
Human liver-derived single enzymes, supersomes, sub-cellular and organelles' fractions (cytosol, microsomes, mitochondria, S-9 fractions)	<ul style="list-style-type: none"> - Useful for identifying mechanisms/enzymes/ metabolism of drug- and chemical-induced hepatotoxicity - Contain a rich variety of metabolic enzymes for studying the <i>in vitro</i> metabolism of drugs - High availability - Easy to prepare, use and store - Mitochondrial dysfunctions and energy metabolism studies are allowed - Molecular/sub-cellular investigations 	<ul style="list-style-type: none"> - Only sub-acute/acute toxicity studies - Extremely simplified models, lacking whole gene regulation systems, cell-cell interactions, bile canaliculi, transporters, cell structures and functions - For extrapolation to whole cell, all sub-cellular fractions should be tested - Low level of enzyme activity may be faced - Difficult extrapolation to whole <i>in vivo</i> organism - Lack of concordance with the <i>in vivo</i> situation (microsomes lack some phase II enzymes) 	<p>Boelsterli & Lim, 2007 Clarke & Jeffrey, 2001 Guengerich, 1996 Mae <i>et al.</i>, 2000 Rawden <i>et al.</i>, 2005</p>
Reporter gene-based systems (mainly P450 enzymes-expressing models): recombinant hepatoma cells, liver supersomes, microsomes	<ul style="list-style-type: none"> - Supply drug-metabolizing or functional capacity to cellular systems lacking metabolic enzymes/ transporters - Provide information about single CYP enzymes - Readily available - All known human cytochrome P450 (CYPs) have been successfully over-expressed in genetically modified organisms 	<ul style="list-style-type: none"> - Only sub-acute/acute toxicology studies - Lack of other phase I and phase II biotransformation enzymes - Extremely simplified model - The transduced isoform is in excess as compared to physiological concentration <i>in vivo</i> 	<p>Huang <i>et al.</i>, 2000</p>
Single liver cells analysis	<ul style="list-style-type: none"> - Single cell approach of biological process - High availability of cells - Possibility to test high broad number of drugs in various culture conditions 	<ul style="list-style-type: none"> - Very short-term studies - Sub-acute/acute toxicity studies - Need optimisation of investigation tools 	<p>O'Brien <i>et al.</i>, 2006 Xu <i>et al.</i>, 2004</p>
Isolated hepatocytes in suspension	<ul style="list-style-type: none"> - Highly available - Easy-to-handle - Poor functional activity - Applicability to High-throughput screening (HTS): limited - Could support kinetic, and drug-drug interactions studies 	<ul style="list-style-type: none"> - Short-term cell viability (2-4 hrs) - Sub-acute/acute toxicity studies - Phenotypic instability due to alteration of tissue architecture and ECM, loss of cell polarisation/organisation - Loss of cell-cell / cell-ECM interactions - High variability between batches - Absence of non-parenchymal cells 	<p>Guillouzo, 1998 Richert <i>et al.</i>, 2006</p>
Hepatic cell lines in conventional 2D culture (examples of human-derived cell lines: HepG2, Hep3B, HepaRG, HepZ, C3A, THLE; examples of non-human hepatic cell lines: HTC, BRL3A and NRL clone 9, Fa32 and WIF-B9)	<ul style="list-style-type: none"> - Almost infinite capacity of proliferation - High availability - Easy-to-handle (culture, freezing, etc.) - Possibility to genetically engineer cells (Hep3B, HepaR, THLE) - Avoid repeated cell isolation - High reproducibility - Moderate cost - Applicable to HTS - Differentiated phenotype variably expressed, according to the cell line (e.g. HepG2 cells express CYP1A, 	<ul style="list-style-type: none"> - Acute toxicity studies - Lack or limited/partial drug-metabolism capacity and other hepatic functions - Absence of non-parenchymal cells - Expression of typical phenotype, depending on culture conditions and passaging - No accurate modelling of <i>in vivo</i> hepatic phenotype (genetically instable and/or derived from malignant tissues) 	<p>Boess <i>et al.</i>, 2003 Dierickx, 2003 Guillouzo <i>et al.</i>, 2007 Jennen <i>et al.</i>, 2010 Kanebratt & Andersson, 2008 Malatesta <i>et al.</i>, 2008 Payen <i>et al.</i>, 1999</p>

Models	Advantages	Drawbacks	References
	<p>CYP2B, CYP3A, CYP2E, UDPGT, GST, but lack other drug metabolizing enzymes; HepRG cells express CYP1A2, CYP2B6, CYP2C9, CYP3A4, CYP2E1, GSTAs, UGT1A1, some ABC transporters, some plasma proteins, but not always in homogeneous way)</p> <p>- According to the cell line: metabolic profiling; kinetic studies; drug-drug interaction, mechanistic studies and short-term toxicity screening</p>		<p>Richert, <i>et al.</i>, 2006 Schoonen <i>et al.</i>, 2009 Slany <i>et al.</i>, 2010 Werner <i>et al.</i>, 2000 Wilkening & Bader, 2003</p>
2D primary cultures of hepatocytes in static conditions (monotypic cultures)	<p>- Primary human hepatocytes represent the <i>in vitro</i> model of choice for drug screening</p> <p>- Express most of CYP isoforms (e.g. CYP1A2, CYP2A6, CYP2B6, CYP2C9, CYP2C19, CYP2D6, CYP2E1, CYP3A4)</p> <p>- Express phase II biotransformation enzymes (e.g. UDPGT, SULT2A1, GST)</p> <p>- Easy to use and fast</p> <p>- Short-term preservation of cell viability, liver-specific functions and gene responsiveness</p> <p>- High/medium efficient cryopreservation</p> <p>- At high density or confluence, cell-cell contacts may be rebuilt</p> <p>- Reproducible method</p> <p>- Short-time inducibility of phase I and phase II enzymes by xenobiotics</p> <p>- Applicable to HTS</p> <p>- Could support: metabolic profiling, pharmacokinetic (ADME) and drug-drug interactions (DIDs) studies, mechanistic studies and short-term toxicity screening</p>	<p>- Early phenotypic alterations (about 75% of total CYP activity within the first 24 hrs)= loss of accuracy</p> <p>- Scarcity of human liver</p> <p>- Isolation is time consuming and may damage cells</p> <p>- Limited proliferation</p> <p>- Difficulty to mimic the <i>in vivo</i> microenvironment</p> <p>- Loss of cell polarity, tissue architecture, membrane domains</p> <p>- Lack of non-parenchymal cell types</p> <p>- Inter-donor variability (human liver)</p> <p>- Batch-to-batch variability of isolated hepatocytes</p> <p>- High influence of culture conditions on cell features</p> <p>- Inter-species variability</p>	<p>Gomez-Lechon <i>et al.</i>, 2007 Guillouzo, 1998 Hewitt <i>et al.</i>, 2007 Lecluyse <i>et al.</i>, 2001</p>
Somatic cells (trans-differentiation into hepatocytes), hepatic stem/progenitor cells	<p>- Could express a large panel of liver-specific genes (including those involved in biotransformation processes)</p>	<p>- A great effort is needed to reach a fully differentiated phenotype and for use in risk assessment</p> <p>- Variability in the phenotype expressed by "hepatocytes"</p>	<p>Lee <i>et al.</i>, 2004 Schwartz <i>et al.</i>, 2002</p>
2D co-cultures of liver-derived cell types (heterotypic culture, at large- or at micro-scale)	<p>- Higher cell viability than monotypic culture (2 weeks)</p> <p>- Maintain some hepatic functions for longer time (plasma protein, urea secretion, lipoprotein metabolism, some CYPs)</p> <p>- Maintain heterotypic cell-cell interactions</p>	<p>- Only some liver specific functions are slightly maintained after longer time in culture (up from 7 to 15 days)</p>	<p>Guzzardi <i>et al.</i>, 2009 Ijima <i>et al.</i>, 2005 Khetani & Bhatia, 2008 Ohno <i>et al.</i>, 2008</p>
3D cultures of primary hepatocytes/hepatic cell lines/stem cells without (spheroids,	<p>- Maintain more hepatic functions for longer time (up to some weeks)</p> <p>- A number of genes are up-regulated (albumin, transferrin, fibrinogen,</p>	<p>- Cell recovery is sometimes difficult</p> <p>- Loss of liver-specific functions (decline of some CYP activities)</p> <p>- In some 3D models, formation of</p>	<p>Chang & Hughes-Fulford, 2009 Du <i>et al.</i>, 2008</p>

Models	Advantages	Drawbacks	References
micromasses) or with scaffolds (micropatterned polydimethylsiloxane surfaces; nanofibrillar network; hydrogels Sandwich cultures: collagen-collagen, collagen-matrigel, alginate encapsulation, or RGD-galactose)	<ul style="list-style-type: none"> prothrombin, CYP1A1, CYP1A2, CYP2E1, CYP3A, etc.) - Ureagenesis varies according to the model, and may be 6-7 times as in classical 2D culture - High level of hepatic transporters - Fluidic dynamic of some bioreactor favours shear stress and support liver-specific gene expression - Improve microenvironment features - Hepatocytes are much more sensitive to some xenobiotics than in static 2D culture - After optimisation of culture and microenvironment conditions, these models could be used for chronic toxicology 	<ul style="list-style-type: none"> necrotic cores: - According to the 3D model, specific hepatic function are maintained - Currently unsuitable for HTS (need the development of adequate methods/ devices for increasing sensitivity and reliability, lowering cost and time-consuming features) 	<ul style="list-style-type: none"> Evenou <i>et al.</i>, 2007 Kienhuis <i>et al.</i>, 2007 Liu Tsang <i>et al.</i>, 2007 Maguire <i>et al.</i>, 2007 Meng, 2010 Miranda <i>et al.</i>, 2010 Suzuki <i>et al.</i>, 2008 Walker & Woodrooffe, 2001
3D co-cultures of liver-derived cell types	<ul style="list-style-type: none"> - Longer cell viability, as compared to monotypic 3D culture (up to 57 days) - Sustain some liver-specific function from 3 days to 7 up weeks (albumin, urea secretion, expression of CYP1A1/2, CYP2B1, CYP3A) - Mimic liver cyto-organisation/ cyto-orientation - Intercellular interactions and communications - Soluble factors enhance hepatocytes functions 	<ul style="list-style-type: none"> According to culture conditions: - variable cell viability and differentiation status - need bioreactor optimisation to increase mass transfer - <i>in situ</i> approaches/ techniques need to be developed to be applicable for HTS (see 3D monotypic cultures) 	<ul style="list-style-type: none"> Bennett <i>et al.</i>, 2006 Bhatia <i>et al.</i>, 1999 Cheng <i>et al.</i>, 2008 Leite <i>et al.</i>, 2011 Ohno <i>et al.</i>, 2008 Riccaltan-Banks <i>et al.</i>, 2003
Precision-cut liver slices	<ul style="list-style-type: none"> - Several aspects of <i>in vivo</i> microenvironment are preserved - Retain <i>in vivo</i> cyto-/histo-architecture - Acinar sub-localization of functions - Cellular heterogeneity (include non-parenchymal cells) - Expression of functional drug metabolizing enzymes (CYP1A, CYP2A, CYP2B, CYP2C and CYP3A sub-families) and transporters - Preservation of hepatocyte polarity - Could support metabolic profiling, mechanistic studies and, less easily, toxicity screening 	<ul style="list-style-type: none"> - Short-term viability (about 5 days) - Short-term metabolic studies (about 48 to 72 hrs) - Progressive formation of necrotic cores - Poorly amenable to HTS - Limited liver-specific functions - Scarcity of human liver donors - High intra-assay variability - Donor-to-donor variability - Hard to handle - Poorly efficient cryopreservation - Poor diffusion of drugs across the slides 	<ul style="list-style-type: none"> Elferink <i>et al.</i>, 2008 Krumdieck, <i>et al.</i>, 1980 Lake <i>et al.</i>, 1996 Schumacher <i>et al.</i>, 2007
Isolated perfused liver (resections/whole animal liver)	<ul style="list-style-type: none"> - Maintenance of whole organ features and functionality (cell-cell and cell-ECM interactions, cell polarisation, cell heterogeneity, 3D organisation, zonation) - Represent the closest models mimicking <i>in vivo</i> situation - Allow real-time bile collection/analysis and oxygen consumption - Liver injury is reflected by LDH, AST, and ALT 	<ul style="list-style-type: none"> - Very short-term studies are possible (2-3 hours) - Hard to handle - Expensive model - Poor reproducibility - Difficult inter-species extrapolation - Impossibility to be applied to human liver 	<ul style="list-style-type: none"> Gores <i>et al.</i>, 1986 Şahin, 2003

Models	Advantages	Drawbacks	References
Integrated discrete multiple organ co-culture systems	<ul style="list-style-type: none"> - Try to re-create the organ-organ cross talks (paracrine factors) - Assessment of organ-specific toxicity - Short-term (48 hrs) assessment of the biological/ toxicological effect of native drugs and their metabolites/ catabolites 	<ul style="list-style-type: none"> - Need optimisation for HTS - Biotransformation of drug need to be known earlier to optimise cell culture and spatial organisation (or determined by random positioning) - Some limitations related to the 2D configuration 	Li, 2008 and 2009
Whole organism	<ul style="list-style-type: none"> - Maintenance of systemic interrelations, tissue integrity and normal hepatic functions (for the considered specie) - Maintenance of liver physiology - Well known and often standardized methods - Whole system inter-relation is preserved - Allow to take into account the biokinetic features of drugs/ molecules, (ADME/toxicology processes are maintained) 	<ul style="list-style-type: none"> - Ethically discussable - Need to be revised for applying the 3R's concept - Need of GPL practice - Inter-species variability and difficulty to reflect human context (human-specific metabolites, inherent sensitivity of peculiar population) = difficulty and risk of unreliability, extrapolation of results from animal to human for xenobiotic metabolism as well as target organ sensibility - In clinical trials: inter-individual variability, limitations of trial endpoint and population sampling - Expensive and time consuming - Uncontrolled sources of variability, such as housing conditions of animals, subjectivity in scoring, etc. 	Li, 2004

New computational (*in silico*) models, toxicogenomics-, transcriptomics-, proteomics- and metabolomics-based models present important advantages for risk assessment, but they need adequate *in vivo* or *in vitro* models to be reliable (Cheng & Dixon, 2003; Khor *et al.*, 2006; Hunt *et al.*, 2007; Valerio, 2009; Amacher, 2010; Gómez-Lechón, *et al.*, 2010).

Table 2. Experimental approaches used for hepatic risk assessment.

The first and simplest *in vitro* liver models were optimised for studying single metabolic functions, and are based on the use of hepatic sub-cellular fractions (single enzymes, microsomes, supersomes, cytosolic fractions and mixed fractions). Although such models are easy to use, they fail in mimicking the complete and complex metabolic potential of hepatocytes, as well as intra-lobular zonal specialisation and inter-individual heterogeneity of the liver-specific cell phenotype. Not even the models based on the use of liver-derived cell lines are considered to be fully reliable, even though, for their metabolic characteristics, they are more complete than the sub-cellular fractions, and present the advantage of limitless culture time. These cell lines, generated from malignant tumours or obtained from transformed cells, present, in effect, the disadvantage of having lost the majority of their original phenotypic features.

In the same way, also engineered cells or systems (e.g. microsomes) based on reporter gene transfer have been shown to be not sufficiently reliable and informative (for more exhaustive information on the principal *in vitro* hepatic models traditionally in use, see also Brandon *et al.*, 2003, Zucco *et al.*, 2004, Gómez-Lechón *et al.*, 2007, Guillouzo & Guguen-Guillouzo, 2008).

It is now well recognised that any experimental model that has to be used for reproducing *in vitro* the function of human liver, must be developed from human hepatocytes in primary culture (Gómez-Lechón *et al.*, 2007). The scarce availability of tissue, its variable quality, and the difficulty to succeed, with the traditional techniques, in maintaining isolated hepatocytes *in vitro*, preserving their viability and functions for long-term studies, have strongly hindered the refinement of these models, limiting, in such a way, the significance of their use (Gómez-Lechón *et al.*, 2007; Guillouzo & Guguen-Guillouzo, 2008). No result worthy of further consideration has been derived from the very large number of attempts performed to get well-differentiated hepatocytes from stem precursors, either originating from the liver itself (resident hepatic progenitors), or from extra-hepatic sites (e.g. bone marrow and adipose tissue), or from mesenchymal cells, obtained in precocious phases of the development (cells from umbilical cord blood or embryonic stem cells) (Cantz *et al.*, 2008). Advantages and limits of these cells as “hepatocyte donors” are summarized in Table 3.

Cell type	Origin	Characteristics	Reference
Embryonic stem cells (ESCs)	Derived from the inner cell mass of pre-implantation-stage blastocysts	<ul style="list-style-type: none"> ⊕ Totipotent stem cells ⊕ Self-renewal ⊕ Huge proliferative potential ⊕ High differentiation potential and plasticity ⊕ Expression of early markers of hepatic differentiation ⊕ Some mature hepatic functions are maintained ⊖ Difficulty to be regulated and maintained under controlled conditions ⊖ Risk of oncogenicity ⊖ Ethical issues ⊖ Limited availability 	Agarwal <i>et al.</i> , 2008 Baharvand <i>et al.</i> , 2006 & 2008 Ishii, <i>et al.</i> 2010 Jozefczuk <i>et al.</i> , 2011 Liu T <i>et al.</i> , 2010 Rambhatla, <i>et al.</i> , 2003 Soto-Gutierrez <i>et al.</i> , 2007
Extra-hepatic adult stem cells	Bone marrow	<ul style="list-style-type: none"> ⊕ Pluripotent stem cells ⊕ Inducible to express a number of liver-specific functions ⊖ Difficulty to reach full adult hepatocyte phenotype ⊖ Less differentiated than primary hepatocytes 	Avital <i>et al.</i> , 2001 Chen <i>et al.</i> , 2006 Chivu <i>et al.</i> , 2009 Petersen <i>et al.</i> , 1999
	Adipose tissue	<ul style="list-style-type: none"> ⊕ Pluripotent stem cells ⊕ Express to some extent specific hepatic functions ⊖ Quantitatively less differentiated than HEPG₂ cell line ⊖ Less differentiated than primary hepatocytes 	Okura <i>et al.</i> , 2010
	Umbilical cord blood	<ul style="list-style-type: none"> ⊕ Pluripotent stem cells ⊕ Express some hepatic markers ⊖ Further investigations are necessary to better characterize their differentiation status ⊖ Less differentiated than primary hepatocytes 	Campard <i>et al.</i> , 2008 Hong <i>et al.</i> , 2005 Lee <i>et al.</i> , 2004
	Peripheral blood	<ul style="list-style-type: none"> ⊕ CD14⁺ peripheral blood monocytes ⊕ Well differentiated hepatocyte-like cells (expression of a number of liver-specific functions) ⊕ Easy to obtain ⊖ Multi-laboratory investigations should be done to validate the method 	Ruhnke <i>et al.</i> , 2005 Ehnert, 2008 and 2011

Cell type	Origin	Characteristics	Reference
Adult/foetal stem cells and hepatic progenitors	Liver	<ul style="list-style-type: none"> ⊕ Multi-potent stem cells ⊕ Different adult stem cells typologies ⊖ Still difficult to use for therapeutic applications ⊖ Hardly obtainable 	Dan & Yeoh, 2008 Turner, 2011
	Hepatic progenitors (usually localised in small biliary canals)	<ul style="list-style-type: none"> ⊕ Bi-potential cells ⊕ Differentiate in both hepatocytic and biliary lineages ⊖ Low cell number (in adult liver) ⊖ Difficult proposal for human derived cells 	Dan & Yeoh, 2008 Zhang <i>et al.</i> , 2008
	Foetal hepatocytes, hepatoblast precursors	<ul style="list-style-type: none"> ⊕ Multi-potent stem cells ⊕ High proliferation rate ⊕ Exhibit some biotransformation pathways ⊕ Bi-potential plasticity ⊖ Ethical problems for human donors 	Dan <i>et al.</i> , 2006, Ring <i>et al.</i> , 2010
	Somatic adult cells: hepatocytes	<ul style="list-style-type: none"> ⊕ Temporary high differentiated phenotype ⊖ Unipotent cells ⊖ Low replication rate ⊖ Rapid cell function decrease ⊖ Low cell availability for human cells 	Gomez-Lechon <i>et al.</i> , 2007
Induced pluripotent stem cells (iPS)	From connective tissues (fibroblasts or other somatic cells)	<ul style="list-style-type: none"> ⊕ Pluripotent cells ⊕ Highly proliferative cells ⊕ Capability to differentiate into liver-specific parenchymal cells ⊕ Quite similar to hESCs ⊕ Very promising technology ⊖ Lowest replication and differentiation capability than ESCs ⊖ Immature and incomplete hepatic phenotype ⊖ Still need the optimisation of differentiating protocols ⊖ Development of iPS without virus could represent a great challenge also for therapeutic applications ⊖ Need further development of differentiating strategy (type of differentiating factor to be used, spatio-temporal release of factors), optimisation and standardisation of induction protocols and culture conditions, as well as an increase of the quality control of the final cell preparation 	Takahashi <i>et al.</i> , 2007 Espejel <i>et al.</i> , 2010 Hu <i>et al.</i> , 2010 Q. Feng <i>et al.</i> , 2010 Sullivan <i>et al.</i> , 2010 H. Liu <i>et al.</i> , 2010 & 2011 Greenbaum, 2010 Si-Tayeb <i>et al.</i> , 2010
Trans-differentiated cells	Epithelial cells	<ul style="list-style-type: none"> ⊕ Bi-potent cells ⊖ Immature cell functions are expressed 	Snykers, 2007
	Pancreatic cells (healthy or tumour-derived)	<ul style="list-style-type: none"> ⊕ Some differentiated hepatic enzymes are expressed ⊖ Difficult to propose for human-derived cells 	Tosh, 2002 Burke <i>et al.</i> , 2006 and 2007

Table 3. Cell types commonly used for the design of *in vitro* hepatic models and liver tissue engineering.

The hepatocyte is a structurally complex epithelial cell and represents the major hepatic parenchymal cell type, either in terms of mass (60% of the total number of liver cells and 80% of the total volume of the organ), or for the number of functions carried out. Cholangiocytes and non-parenchymal cells [sinusoidal endothelial cells, stellate cells (fat-storing Ito cells), pit cells (intrahepatic lymphocytes), Kupffer cells, and hepatocyte precursors] influence, by their presence and activity, hepatocyte survival and function (Selden *et al.*, 1999; Riccalton-Banks *et al.*, 2003; Nahmias *et al.*, 2006; Catapano & Gerlach, 2007). The extracellular matrix (ECM) represents another key component of this organ: it is peculiar by composition and structure, and it plays a determinant role in regulating hepatocyte viability, as well as other biological processes, such as development, proliferation, migration and functional activity (Selden *et al.*, 1999; Van de Bovenkamp *et al.*, 2007). Being functionally and structurally polarised, the hepatocyte requires, in effect, precise and specific cell-cell and cell-matrix interactions. The characteristic cyto-architecture of liver, organised as “lobular” units, entails, furthermore, a particular morphological and functional specialisation of hepatocytes, that varies with position along the liver sinusoid, from the portal triad to the central vein (“zonation”) (see Fig. 1 and Fig. 3). It is now well accepted that this regional compartmentalisation of metabolic (and detoxification) functions of hepatocytes within the “acinus” is responsible for the “zone-specific” liver susceptibility to many hepatotoxic agents (Lindros *et al.*, 1997). The hepatocellular “zonation”, sustained by portocentral patterns of gene expression (“gradient” *versus* “compartmental” and “dynamic” *versus* “stable” types of zonation), is modulated by chemical gradients of oxygen, hormones, growth factors and metabolites, which are generated and maintained as a result of the specific characteristics of the ECM and of the distribution of non-parenchymal cells (Gebhardt, 1992; Christoffels *et al.*, 1999). This specific microenvironment, dynamic, highly organised and rigidly structured, is thus fundamental for maintaining hepatic functions. It is, actually, well known, how the subversion of liver architecture produced by the alteration/destruction of the strict relationship hepatocyte-matrix and hepatocyte-non parenchymal cells, that occurs as a consequence of trauma or pathological states (e.g. fibrosis), is responsible for important negative effects on liver homeostasis and loss of functions (Selden *et al.*, 1999; Van de Bovenkamp *et al.*, 2007). Experimental models of liver should, therefore, take into account the strict inter-dependence between the complex histomorphology of this organ and its functions/responses (Allen *et al.*, 2005).

The need to preserve the original cytological and histo-architectural features of the hepatic tissue has provided the basis for attempting to develop various *ex vivo* hepatic models (Table 2). Among these models, the best known is the isolated and perfused organ model (Gores *et al.*, 1986, Bessems *et al.*, 2006). Although this model is considered to be the closest representation of the *in vivo* situation, its use is limited to a few hours; moreover, the necessity to employ a whole organ for each single experimental point, leads to a very broad range of variability in the results (Gores *et al.*, 1986), and makes impossible the use of human-derived tissue. As an alternative, the model based on the culture of organ slices, obtained by particular section methods (precision-cut liver slices) has been developed. Notwithstanding this model may solve, at least partially, the problem of results’ variability, it still presents, employed with the conventional culture techniques, the disadvantage of limited cells’ survival (only a few days), even if slice thickness is maintained under the physical limit of diffusion of gas and nutrients (200 μm) (Fisher *et al.*, 2001, Vickers *et al.*, 2011). Despite the development of new dynamic culture methods (see later) renders the

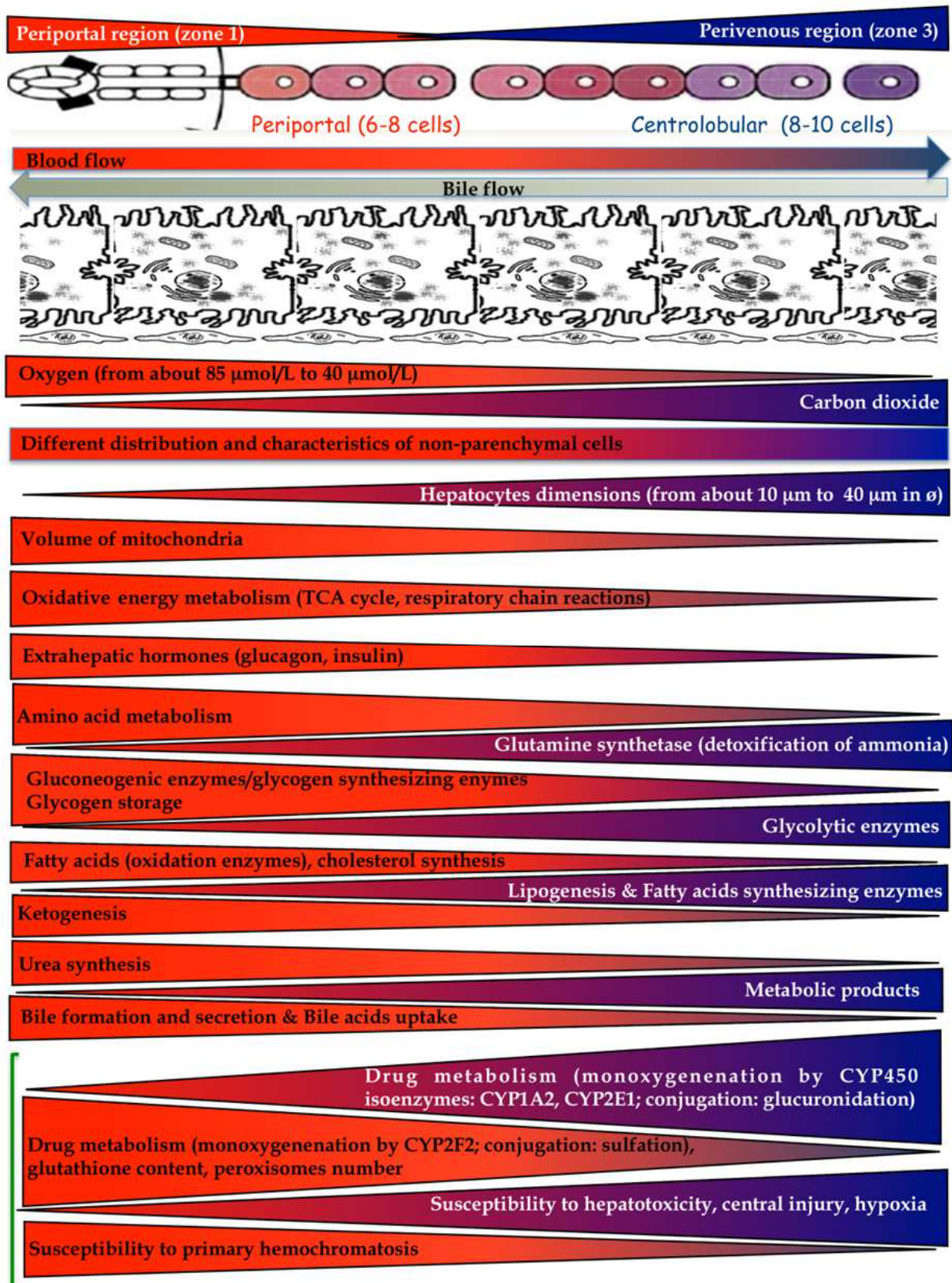


Fig. 3. Zonal specialisation of liver acinus, from periportal to centrilobular region, and different susceptibility to toxic agents.

future of this model very promising, due to the fact that, by preserving intact the original tissue microenvironment (ECM, multi-cellularity and histo-architecture), it could be very close to the liver *in vivo* (Van de Bovenkamp *et al.*, 2007), liver slices do not possess, at present, such characteristics. The more ordinary models used in the study of hepatic function, with their relative advantages/disadvantages, are illustrated in Table 2.

3. Three-dimensional liver-derived *in vitro* systems: Tissue engineering and the contribute of the new technologies

As in the case of other tissue models, it is now generally accepted that any attempt aimed at the generation of reliable and physiologically relevant *in vitro* liver analogues, should take into account the need of reproducing (or conserving) the specific characteristics of the original microenvironment typical of that organ (see above). The main features of the environmental context within which cells physiologically grow, proliferate and express their own functions, include, in addition to multiple cellularity, biochemical and mechanical properties (that are specific of each organ/tissue), also the three-dimensionality (Mazzoleni *et al.*, 2009).

Over the last few decades, it has already been widely demonstrated that, compared to the use of traditional culture techniques in monolayer (2D), three-dimensional (3D) culture methods allow researchers to generate *in vitro* tissue-derived model systems that better mimic the *in vivo* situation (Pampaloni *et al.*, 2007). Significant differences have, in fact, been demonstrated between the biological behaviour of cellular elements (hepatocytes included) maintained in culture with traditional (2D) culture methods, and that of cells kept in 3D culture (Mazzoleni *et al.*, 2009). Figure 4 presents a qualitative comparison between the most important characteristics of the different currently used liver model systems.

The importance of being able to reproduce *in vitro* the 3D specific microenvironment typical of the tissue of origin, has led to the design and development of increasingly complex and sophisticated 3D culture methods. These methods, benefiting also from the rapid development of tissue engineering techniques, have produced, especially in the case of the liver, an extremely wide variety of models (Nahmias *et al.*, 2006). In the case of the liver, due to the high structural complexity of its tissue microenvironment (see above), any attempt to apply the principles of tissue engineering aimed to generate constructs capable of reproducing, *in vitro*, the specific characteristics of the organ *in vivo*, implies to face extremely difficult technical problems, which also result from having to consider issues that must be performed on spatial and temporal scales that are "gigantic". For example: the hepatocyte can recognize the structural characteristics of the surface on which it must adhere with a threshold of nanometers in size, but it should organise itself in hierarchical structures of centimetres in size; similarly, the presence of particular molecules may alter the structural characteristics of the hepatocyte's microenvironment within a few milliseconds, while the time required for the cell to functionally adapt to these changes can take several weeks (Mitzner *et al.*, 2001).

Over the years, the research in this direction has been mainly devoted to the generation of new materials (micro- and nano-structured), which possess physical and biochemical characteristics suitable to fulfil mechanical and biological support to the physiological hepatocyte activities. In particular, also due to the contribution of the new emerging technologies, the number of liver models that have been generated within the last ten years, by using the principles of tissue engineering, has been enormous.

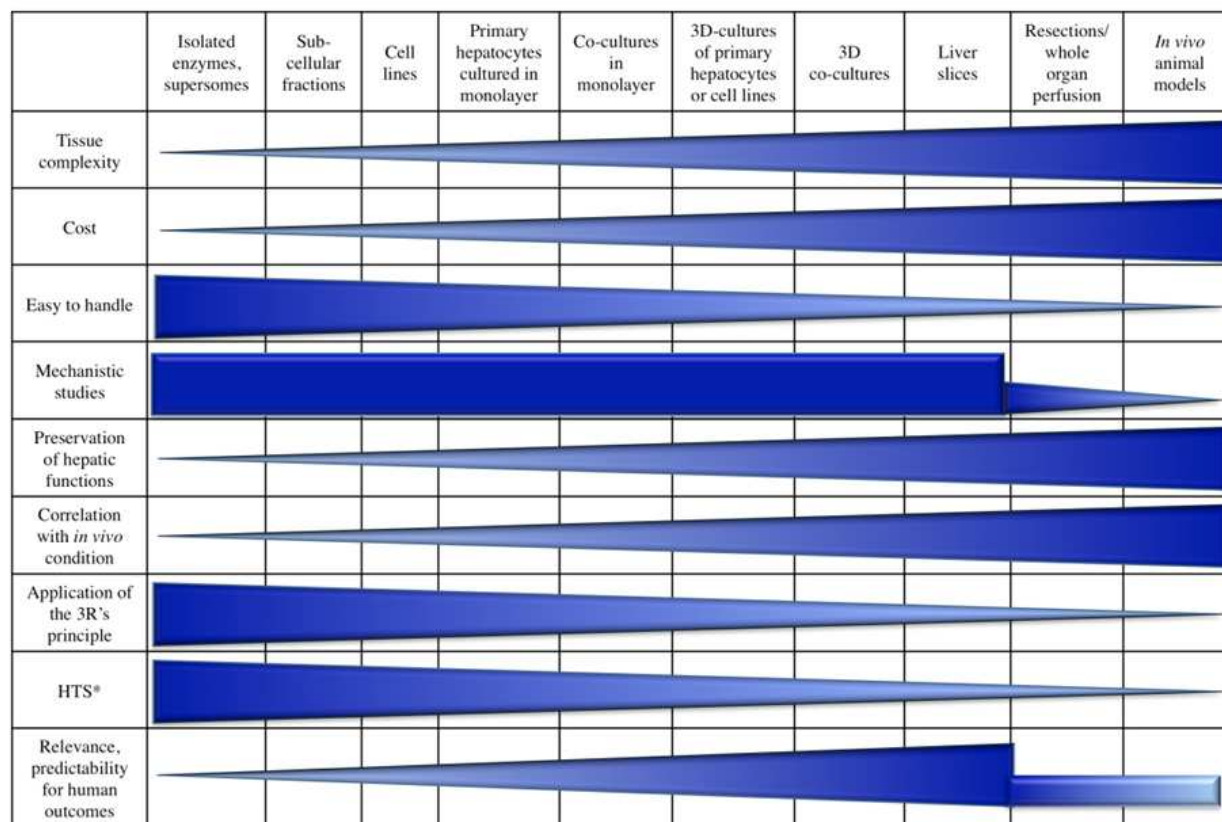


Fig. 4. Comparison of the most diffused hepatic model systems. Primary hepatocytes cultured in monolayer represent the most diffused model. * HTS: suitable for high-throughput screening.

Since differentiated hepatocytes are anchorage-dependent, immotile and non-proliferating cells, the first "liver-like engineered microenvironments" had, as primary objective, to ensure well-defined characteristics of the substrates (bio/artificial matrices), in terms of architecture (nano-fibrillar), porosity (micro- and macro- scale), and biochemical composition. The products that are now available (even commercially), are hydro-gels and 3D surfaces, composed of specific constituents of original extra-cellular matrices (extractive or synthetic origin), and solid supports (micro-carriers or scaffolds, also pre-shaped), made up of porous, bio-compatible, organic or synthetic components. Examples of the sophisticated models that, for various purposes, have been obtained from primary hepatocytes, are those generated by using bio-degradable nano-structured substrates (Kim *et al.*, 1998), heat-sensitive polymers (Ohashi *et al.*, 2007), various 3D matrices (Fiegel *et al.*, 2008; ZQ. Feng *et al.*, 2010; Ghaedi *et al.*, 2012), or synthetic self-assembling hydrogels (Wang *et al.*, 2008).

The development of the micro- and nano-technologies (i.e. micro-/nano-fabrication techniques, micro-electronics and micro-fluidics), has allowed the creation of models where the cellular elements are integrated into controlled microenvironments, within which, in addition to the precise definition of the spatio-temporal signals individual cells are exposed to, it is also possible to perform the continuous multi-parameter monitoring of their biological responses ("lab-on-a-chip" devices). Representative examples of this approach, applied to cultured hepatocytes, and aimed at generating functional models of liver lobules, bile canaliculi and sinusoids, have been given, respectively, by Ho *et al.* (2006), Lee *et al.*

(2007), and, more recently, by Nakao *et al.*, 2011. Although structurally very complex and interesting, these models of "micro-structured tissue-like environments" have major drawbacks, that limit significantly their application: they lack, in effect, the complexity of original tissue-specific microenvironments, which are typical of the situation *in vivo*; moreover, they do not allow cell survival for time periods higher than several hours or days.

4. Bioreactors and relative microgravity condition

It is well known that the metabolic requirements of complex 3D cell constructs are substantially higher than those needed for the maintenance of traditional cell monolayers (2D culture) kept in liquid media under static conditions.

The first "dynamic" bioreactors were, in effect, designed in order to meet the necessity of increasing the "mass transfer" rate, for facilitating an adequate long-term supply of gases and nutrients (and the removal of metabolic waste) up to the cellular elements placed in the inner parts of complex 3D tissue explants or tissue-like constructs. Taking advantage of the great progress in the development of new technologies, and of the contribution of computational fluid dynamics, a wide array of dynamic bioreactors have been devised (from the simplest stirred- or suspension-based culture systems, to the more complex membrane-based reactors, and their more sophisticated versions, that include load-, continuously perfused-/pulsed-systems, and multi-compartmentalised bioreactors, able to generate highly controlled microenvironments) (Török *et al.*, 2001, Martin & Vermette, 2005; Catapano & Gerlach, 2007; Meuwly *et al.*, 2007, Guzzardi *et al.* 2011). However, despite all of these technological efforts, none of these bioreactors, are, at present, able to provide optimal conditions for the long-term maintenance of large tissue-like masses in culture. The current generation of bioreactors was, in reality, developed for yielding large masses of cells (or cell products) for industrial or clinical applications, and not for supporting the survival or the self-assembly of multiple cell types into complex 3D tissue-like structures (Hutmacher & Singh, 2008). This applies, in particular, to the liver, a highly specialized organ, whose cellular components are extremely sensitive to even minimal environmental changes, already under physiological conditions (Nahmias *et al.*, 2006; Catapano & Gerlach, 2007).

An important aspect, essential for the appropriate choice of the specific device to use for cell/tissue culture methods, is the consideration that, even if hydrodynamic forces effectively increase mass transfer, in dynamic bioreactors for 3D culturing this effect should be achieved by considering (and balancing) the detrimental effect of turbulence and shear stress on cell survival and function. Low-shear environment and optimal mass transfer have been attained only with the introduction of the Rotary Cell Culture System (RCCS™, Synthecon, Inc.) bioreactors. This technology, fruit of N.A.S.A.'s Johnson Space Center technological research and optimised over the last ten years, has been successfully used in ground- as well as in space-based studies on a wide variety of cell types and tissues (a vast literature is available at <http://www.synthecon.com>). RCCS™ bioreactors provide several advantages, when compared to other available 3D culture systems (Mazzoleni & Steimberg, 2010). A comparison of the main features of various bioreactors (static or dynamic flow condition) commonly used in the foremost culture techniques is presented in Table 4.

Horizontally rotating, transparent clinostats, RCCS™ devices efficiently create a unique, highly controlled microenvironment that, by reproducing some aspects of microgravity

(simulated microgravity) (Klaus, 2001; Ayyaswamy & Mukundakrishnan, 2007), guarantee the most favourable conditions for cell and tissue culturing (Schwarz *et al.*, 1992), and provide potentially powerful tools to reproduce specific 3D tissue morphogenesis (Mazzoleni *et al.*, 2009). Complex tissue-like 3D constructs, different cell types from various origins and various intact tissue explants have been demonstrated, by our group and others, to be kept efficiently in culture by these bioreactors, even for long periods of time (Unsworth & Lelkes, 1998; Hammond & Hammond, 2001; Vunjak-Novakovic *et al.*, 2002; Nickerson *et al.*, 2007; Cosmi *et al.*, 2009; Steimberg *et al.*, 2009, Steimberg *et al.*, 2010; Mazzoleni *et al.*, 2011).

Figure 5 shows selected examples of RCCS™-based tissue culture methods, developed and optimised by our group, and their advantages.

	Shear stress	Mass transfer (gas/nutrient supply; waste removal)	Dimensionality	Adequate for co-culture	Maintenance of liver-specific phenotype
Static 2D culture (monolayer)	No	Adequate	2D	Moderately	Few hours/ days
Static 2D culture (on biosynthetic matrices)	No	Limited	3D (limited)	Moderately	Few days/ weeks
Roller bottles	Moderate	Moderate	2D	Poorly	Few days
Spinner flasks	High	High	3D (very limited)	Poorly	Few days/ weeks
Microfluidic bioreactors	Moderate/ High	High	2D/ 3D	Moderately	Few days/ weeks
Perfused bioreactors	High	High	3D (very limited)	No	Few weeks
Zonation-based devices	High	Optimal	3D	To some extent	Several days
Hollow fiber bioreactors	Low	High	3D (very limited)	To some extent	Some days/ few weeks
RCCS™ bioreactors	Low	Optimal	3D	Yes	Some weeks

Table 4. Static and dynamic bioreactor platforms used in 2D and 3D culture methods.

Even in the case of liver models, it has been demonstrated how these bioreactors allow for the maintenance of isolated human primary liver cells and tissue explants *in vitro*, under conditions that preserve their viability and differentiated functional characteristics, even for long periods (several weeks). Khaoustov *et al.* (1999) have, for example, showed that human hepatocytes, adherent on small biodegradable substrates, were able to survive for 60 days, form specific junctional complexes and structures similar to bile canaliculi, and retain the ability to biosynthesize proteins. The microgravity-based culture conditions generated by the RCCS™ bioreactor have also proved to ensure the long-term survival and preservation of the differentiated metabolic functions in the case of isolated hepatocytes in monotypic 3D

culture (cellular spheroids) (Dabos, 2001), in co-culture with endothelial cells (heterotypic cultures), and in the more complex case of liver tissue homogenates, as well (Yoffe, 1999). Similar observations have also been reported by our group, proving that, under microgravity conditions, primary isolated hepatocytes organize themselves autonomously into multicellular spheroids, with properties similar, for many aspects, to normal liver cells *in vivo* (Mazzoleni *et al.*, 2008). Finally, Wurm *et al.* (2009) have also described an interesting application of the RCCS™ technology for its possible use in the clinical field, as an alternative to conventional models of bioartificial liver (BAL).

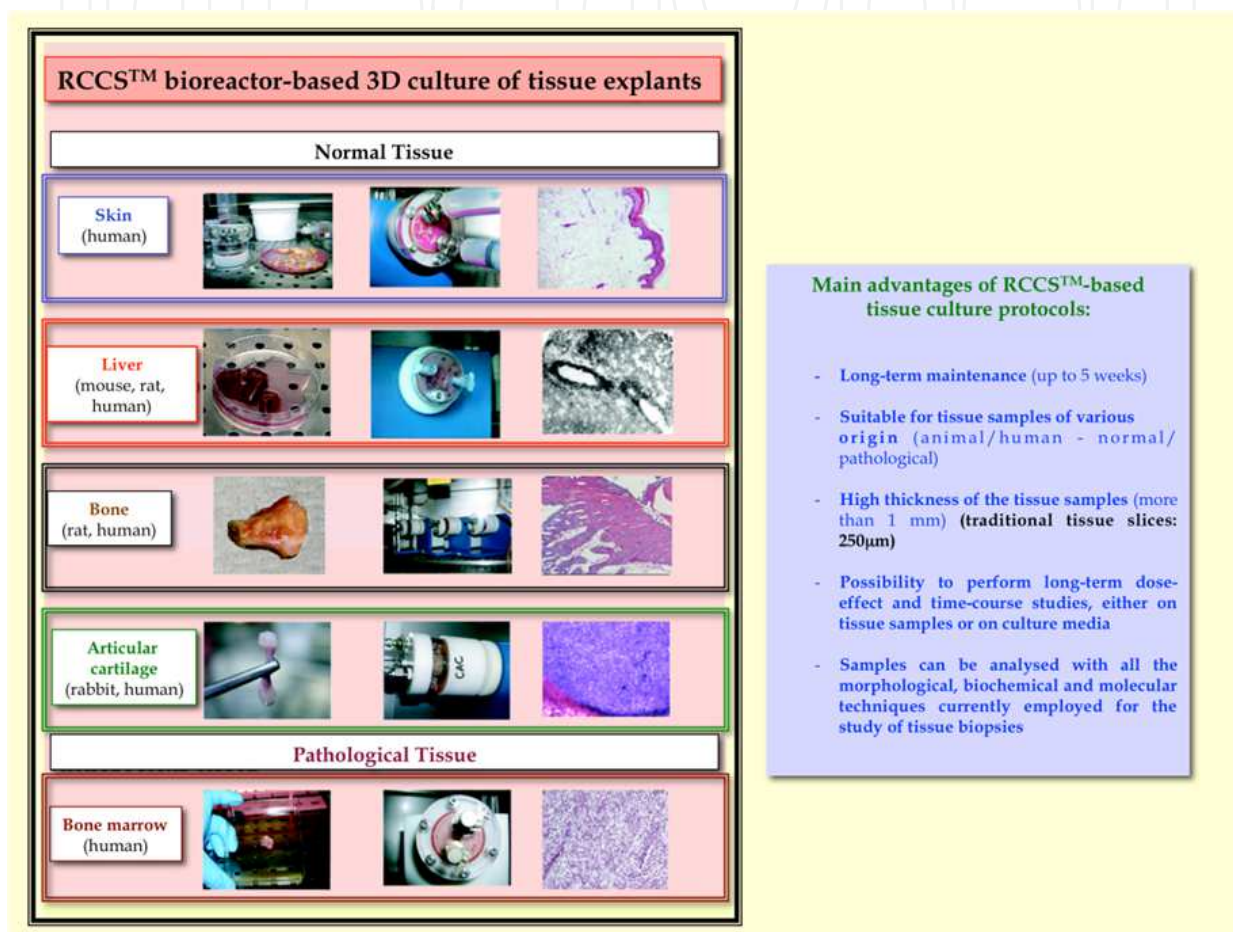


Fig. 5. Examples of RCCS™-based tissue culture methods, developed and optimised by our group, and their advantages.

5. Conclusions

The 3D culture methods based on the use of the dynamic RCCS™ bioreactor demonstrates that they can guarantee the best conditions for generating *in vitro* microenvironments suitable for the long-term maintenance of viable liver-derived parenchymal cells and tissue explants. These techniques enable, moreover, to preserve some of the native and typical morpho-functional characteristics of the organ *in vivo*. For these reasons, the RCCS™-based 3D culture methods illustrated in this chapter present, in the current scientific context, the most promising prospect for the development of physiologically significant liver models, which may, in the future, be usefully employed in basic and applied research, in pharmaco-

toxicology, risk assessment, and in clinical fields. Remarkably, the rapid progress in the development of new experimental protocols and analytical methods, together with the possibility of using this innovative microgravity-based culture technology for the development of liver-derived complementary *in vitro* models, based on the use of human isolated cells or intact tissue explants (healthy or pathological), could, indeed, open new perspectives for the study of important (and still unknown) aspects of the patho-physiology (functions and responses) of this complex organ. Once optimised (and validated), these *in vitro* (cell-based) and *ex-vivo* (tissue-based) human liver models should also allow new applications in the field of pharmaco-toxicology and risk assessment, and, in addition, could permit to reduce the need of experimental animals. By mimicking human liver functions and responses, these models could, in effect, be used either for studying mechanisms of toxicity (identification of critical toxicological pathways/targets), or, if adequately optimised, for screening purposes (Blaauboer, 2008).

This is in line with the declared policies of the European Union (EU) and of the United States (US), which solicit more innovative approaches to toxicity testing and the reduction of animal-based studies, as it is well expressed, for example, by EU legislation (7th Amending Directive 2003/15/EC to Council Directive 76/768/EEC on Cosmetics; REACH Regulation on Chemicals and their safe use - EC 1907/2006, Council Regulation n.440/2008 on dangerous substances, and Directive 2010/63/EU on the protection of animals used for scientific purposes) (Lilienblum *et al.*, 2008; Hartung, 2010), and by the 2007 landmark report of the US National Academy of Sciences "Toxicity Testing in the 21st century. A vision and a strategy" (NRC, 2007). The NCR 2007 report emphasizes the need of replacing traditional animal-based studies with innovative testing strategies (physiologically relevant *in vitro* assays and specific *in silico* models), which, taking advantage of new advances in scientific knowledge and new technologies, could improve real exposure measurement and human health risk assessment. The report envisions a shift of the traditional paradigm of toxicology from the measurement of apical endpoints in animal models, to the proper understanding of primary toxic mechanisms ("toxicity pathways") in humans and use of computational modelling techniques ("*in silico* methods"). This vision has generated various research initiatives and several on-going projects, such as the HESI "Risk Assessment in the 21st Century" Project (RISK21) and the US Environmental Protection Agency (EPA)'s ToxCast™ program (Dix *et al.*, 2007; US EPA, 2009), aimed at advancing toxicology strategies in EU and US (Vanhaeke *et al.*, 2009; Stephens *et al.*, 2012). According to NRC 2007 vision, predictive models that need to be developed, should be based on the identification, analysis and modelling of pathways involved in human cellular responses during the transition from physiological to pathological status in response to toxicants (US EPA, 2009). Innovative tissue-specific *in vitro* models (such as the 3D RCSS™-based liver models described in this chapter can be considered), are intended to identify and evaluate key toxicity pathways perturbations (NCR, 2007), in order to create the knowledge base required to develop *in vitro* and *in silico* pathway assay test systems relevant to human risk assessment (Stephens *et al.*, 2012). The specific interest that these 3D liver models present within this new vision in toxicological risk assessment is clearly highlighted by the US EPA Strategic Plan for the Evaluation of the Toxicity of Chemicals (US EPA, 2009), in several parts of the document and, namely, when it refers to the importance of preserving the original 3D tissue-specific heterogeneous microenvironment for improving the predictive potential of *in vitro* systems ("*Some toxicities are manifest only when multiple cell types and specific cell-cell interactions are*

present. Other toxicities may be dependent upon tissue geometry and 3D architecture. Examples include signalling between hepatocytes and Kupffer cells, or the many forms of signalling between epithelial and mesenchymal cells.”) (US EPA, 2009).

Ultimately, microgravity-based 3D culture methods could lead to the development of new devices, suitable to support, from the clinical point of view, the liver's essential functions (e.g. new-concept "bio-artificial" livers), or lead to the design of innovative protocols for the autologous transplantation of normal or engineered hepatocytes, in order to counteract liver disorders (e.g. those caused by specific enzymatic defects).

6. Acknowledgments

The authors are grateful to Dr. Nathalie Rochet (University of Nice “Sophia-Antipolis”, CNRS, UFR of Medicine, France) for the fruitful scientific discussion and the critical reading of the manuscript, and to Dr. Richard Fry (Cellon S.A., Luxembourg), for his interest in our work, and for his kind and constant help in exploring the possibilities of the 3D culture in microgravity.

This work has been partly supported by European Union grants EC Biotechnology BIO4-CT-97-2148 (“Development of 3D *in vitro* models of human tissues for pharmacotoxicological applications”) and LSHB-CT-2006-037168 [“Development of 3D *in vitro* models of estrogen-reporter mouse tissues for the pharmacotoxicological analysis of estrogen receptors-interacting compounds - (ER-ICs)”, EXERA project], and by funds of the University of Brescia.

7. References

- Agarwal, S., Holton, KL. & Lanza, R. (2008). Efficient differentiation of functional hepatocytes from human embryonic stem cells. *Stem Cells*, Vol. 26, No. 5, (May 2008), pp. 1117-1127, ISSN 1549-4918
- Allen, JW., Khetani, SR. & Bhatia, SN. (2005). *In vitro* zonation and toxicity in hepatocyte bioreactor. *Toxicological Sciences*, Vol. 84, No. 1, (March 2005), pp. 110-119, ISSN 1096-0929
- Amacher, DE. (2010). The discovery and development of proteomic safety biomarkers for the detection of drug-induced liver toxicity. *Toxicology and Applied Pharmacology*, Vol. 245, No. 1, (May 2010), pp. 134-142, ISSN 1096-0333
- Arias, I., Wolkoff, A., Boyer, J., Shafritz, D., Fausto, N., Alter, H. & Cohen, D. (2009). *The Liver: Biology and Pathobiology*, 5th Edition. John Wiley & Sons, Inc.; ISBN: 978-0-470-72313-5, Hoboken, U.S.A.
- Avital, I., Inderbitzin, D., Aoki, T., Tyan, DB., Cohen, AH., Ferrareso, C., Rozga, J., Arnaout, WS. & Demetriou, AA. (2001). Isolation, Characterization, and Transplantation of Bone Marrow-Derived Hepatocyte Stem Cells. *Biochemical and Biophysical Research Communications*, (October 2001), Vol. 288, No. 1, pp. 156-164, ISSN 1090-2104
- Ayyaswamy, PS. & Mukundakrishnan, K. (2007). Optimal conditions for simulating microgravity employing NASA designed rotating wall vessels. *Acta Astronautica*, Vol. 60, No. 4-7, (February-April 2007), pp. 397-405, ISSN 0094-5765
- Baharvand, H., Hashemi, SM., Kazemi Ashtiani, S. & Farrokhi, A. (2006). Differentiation of human embryonic stem cells into hepatocytes in 2D and 3D culture systems *in vitro*.

- The International Journal of Developmental Biology*, Vol. 50, No. 7, pp. 645-652, ISSN 1696-3547
- Baharvand, H., Hashemi, SM. & Shahsavani, M. (2008). Differentiation of human embryonic stem cells into functional hepatocyte-like cells in a serum-free adherent culture condition. *Differentiation*, Vol. 76, No. 5, (May 2008), pp. 465-477, ISSN 1432-0436
- Bennett, TRJ., Thomson, B. & Shakesheff, KM. (2006). Hepatic stellate cells on poly (DL-lactic acid) surfaces control the formation of 3D hepatocyte co-culture aggregates *in vitro*. *European Cells & Materials*, Vol. 11, (January 2006), pp. 16-26, ISSN 1473-2262
- Bessems, M., 't Hart, NA., Tolba, R., Doorschodt, BM., Leuvenink, HG., Ploeg, RJ., Minor, T. & van Gulik, TM. (2006). The isolated perfused rat liver: standardization of a time-honoured model. *Laboratory Animals*, Vol. 40, No. 3, (July 2006), pp. 236-246, ISSN 1758-1117
- Bhatia, SN., Balis, UJ., Yarmush, ML. & Toner, M. (1999). Effect of cell-cell interactions in preservation of cellular phenotype: cocultivation of hepatocytes and nonparenchymal cells. *FASEB Journal*, Vol. 13, No. 14, (November 1999), pp. 1883-1900, ISSN 1530-6860
- Blaauboer, BJ. (2008). The contribution of *in vitro* toxicity data in hazard and risk assessment: current limitations and future perspectives. *Toxicology Letters*, Vol. 180, No. 2, (August 2008), pp. 81-84, ISSN 1879-3169
- Boelsterli, UA. & Lim, PL. (2007). Mitochondrial abnormalities-a link to idiosyncratic drug hepatotoxicity? *Toxicology and Applied Pharmacology*, Vol. 220, No. 1., (April 2007), pp. 92-107, ISSN 1096-0333.
- Boess, F., Kamber, M., Romer, S., Gasser, R., Muller, D., Albertini S. & Suter L. (2003). Gene expression in two hepatic cell lines, cultured primary hepatocytes, and liver slices compared to the *in vivo* liver gene expression in rats: possible implications for toxicogenomics use of *in vitro* systems. *Toxicological Sciences*, Vol. 73, No. 2, (June 2003), pp. 386-402, ISSN 1096-0929
- Brandon, EFA., Raap, CD., Meijerman, I., Beijnen, JH. & Shellens, JHM. (2003). An update on *in vitro* test methods in human hepatic drug biotransformation research: pros and cons. *Toxicology and Applied Pharmacology*, Vol. 189, No. 3, (June 2003), pp. 233-246, ISSN 1096-0333.
- Burke, ZD., Shen, CN., Ralphs, KL. & Tosh, D. (2006). Characterization of liver function in transdifferentiated hepatocytes. *Journal of Cellular Physiology*, Vol. 206, No. 1, (January 2006), pp.147-159, ISSN 1097-4652
- Burke, ZD., Thowfeequ, S., Peran, M. & Tosh, D. (2007). Stem cells in the adult pancreas and liver. *The Biochemical Journal*, Vol. 404, No. 2, (June 2007), pp.169-178, ISSN 1470-8728
- Cantz, T., Manns, MP. & Ott, M. (2008). Stem cells in liver regeneration and therapy. *Cell and Tissue Research*, Vol. 331, No. 1, (January 2008), pp. 271-282, ISSN1432-0878
- Campard, D., Lysy, PA., Najimi, M. & Sokal, EM. (2008). Native umbilical cord matrix stem cells express hepatic markers and differentiate into hepatocyte-like cells. *Gastroenterology*, Vol. 34, No. 3, (March 2008), pp. 833-848, ISSN 1528-0012
- Catapano, G. & Gerlach, JC. (2007). Bioreactors for Liver Tissue Engineering. In: *Topics in Tissue Engineering*. Ashammakhi N., Reis R., Chiellini E. Vol. 3, pp. 1-42, retrieved from http://www.oulu.fi/spareparts/ebook_topics_in_t_e_vol3/abstracts/catapano_01.pdf

- Chang, TT. & Hughes-Fulford, M. (2009). Monolayer and Spheroid Culture of Human Liver Hepatocellular Carcinoma Cell Line Cells Demonstrate Distinct Global Gene Expression Patterns and Functional Phenotypes. *Tissue Engineering: Part A*, Vol. 15, No. 3, (March 2009), pp. 559-567, ISSN 1557-8690
- Chen, Y., Dong, X-J., Zhang, G-R., Shao, J-Z. & Xiang, L-X. (2006). Transdifferentiation of mouse BM cells into hepatocyte-like cells. *Cytotherapy* Vol. 8, No. 4, pp. 381-389, ISSN 1477-2566
- Cheng, A. & Dixon, SL. (2003). *In silico* models for the prediction of dose-dependent human hepatotoxicity. *Journal of Computer-Aided Molecular Design*, Vol. 17, No. 12, (December 2003), pp. 811-823, ISSN 1573-4951
- Cheng, N., Wauthier, E. & Reid, LM. (2008). Mature human hepatocytes from ex vivo differentiation of alginate-encapsulated hepatoblasts. *Tissue engineering: Part A*, Vol. 14, No. 1, (January 2008), pp. 1-7, ISSN 1937-335X
- Chivu, M., Dima, SO., Stancu, CI., Dobra, C., Uscatescu, V., Necula, LG., Bleotu, C., Tanase, C., Albulescu, R., Ardeleanu, C. & Popescu, I. (2009). *In vitro* hepatic differentiation of human bone marrow mesenchymal stem cells under differential exposure to liver-specific factors. *Translational Research*, Vol. 154, No. 3, (September 2009), pp. 122-132, ISSN 1931-5244
- Clarke, S.E. & Jeffrey, P. (2001). Utility of metabolic stability screening: comparison of *in vitro* and *in vivo* clearance. *Xenobiotica*, Vol. 31, No. 8-9, (August-September 2001), pp. 591-598, ISSN 1366-5928
- Conti, F. (2005). *Fisiologia Medica*, Edi-Ermes, ISBN 9788870513479, Milano, Italy
- Cosmi, F., Steimberg, N., Dreossi, D. & Mazzoleni, G. (2009). Structural analysis of rat bone explants kept *in vitro* in simulated microgravity conditions. *Journal of the Mechanical Behavior of Biomedical Materials*, Vol. 2, No. 2, (April 2009), pp. 164-172, ISSN 1878-0180
- Christoffels, VM., Sassi, H., Ruijter, JM., Moorman, AF., Grange, T. & Lamers, WH. (1999). A mechanistic model for the development and maintenance of portocentral gradients in gene expression in the liver. *Hepatology*, Vol. 29, No. 4, (April 1999), pp. 1180-1192, ISSN 1527-3350
- Dabos, K., Nelson, LJ., Bradnock, TJ., Parkinson, JA., Sadler, IH., Hayes, PC. & Plevris, JN. (2001). The simulated microgravity environment maintains key metabolic functions and promotes aggregation of primary porcine hepatocytes. *Biochimica et Biophysica Acta*, Vol. 1526, No. 2, (May 2001), pp. 119-130, ISSN 0006-3002
- Dan, YY., Riehle, KJ., Lazaro, C., Teoh, N., Haque, J., Campbell, JS. & Fausto, N. (2006). Isolation of multipotent progenitor cells from human fetal liver capable of differentiating into liver and mesenchymal lineages. *Proceedings of the National Academy of Sciences of the United States of America*, Vol. 103, No. 26, (June 2006), pp. 9912-9917, ISSN 1091-6490
- Dan, YY. & Yeoh, GC. (2008). Liver stem cells: A scientific and clinical perspective. *Journal of Gastroenterology and Hepatology*, (May 2008), Vol. 23, No. 5, pp. 687-698, ISSN 1440-1746
- Dierickx, PJ. (2003). Evidence for delayed cytotoxicity effects following exposure of rat hepatoma-derived Fa32 cells: implications for predicting human acute toxicity. *Toxicology in Vitro*, Vol. 17, No. 5-6, (October-December 2003), pp. 797-801, ISSN 1879-3177

- Dix, DJ., Houck, KA., Martin, MT., Richard, AM., Setzer, RW. & Kavlock, RJ. (2007). The ToxCast program for prioritizing toxicity testing of environmental chemicals. *Toxicological Sciences*, Vol. 95, No.1, (January 2007), pp. 5-12, ISSN 1096-0929
- Du, Y., Han, R., Wen, F., Ng San San, S., Xia, L., Wohland, T., Leo, HL. & Yu, H. (2008). Synthetic sandwich culture of 3D hepatocyte monolayer. *Biomaterials*, Vol. 29, No. 3, (January 2008), pp. 290-301, ISSN 1878-5905
- Ehnert, S., Nussler, AK., Lehmann, A. & Dooley, S. (2008). Blood monocyte-derived neohepatocytes as in vitro test system for drug metabolism. *Drug Metabolism and Disposition : The Biological Fate of Chemicals*, Vol. 36, No. 9, (September 2008), pp. 1922-1929, ISSN 1521-009
- Ehnert, S., Schyschka, L., Noss, A., Knobloch, D., Kleeff, J., Büchler, P., Gillen, S., Stöckle, U., Burkhart, J., Fabian, E. & Nussler, AK. (2011). Further characterization of autologous NeoHepatocytes for *in vitro* toxicity testing. *Toxicology in Vitro*, (September 2011), Vol. 25, No. 6, pp. 1203-1208, ISSN 1879-3177
- Elferink, MG., Olinga, P., Draaisma, AL., Merema, MT., Bauerschmidt, S., Polman, J., Schoonen, WG. & Groothuis, GM. (2008). Microarray analysis in rat liver slices correctly predicts in vivo hepatotoxicity. *Toxicology and Applied Pharmacology*, Vol. 229, No. 3, (June 2008), pp. 300-309, ISSN 1096-0333
- Espejel, S., Roll, GR., McLaughlin, KJ., Lee, AY., Zhang, JY., Laird, DJ., Okita, K., Yamanaka, S. & Willenbring, H. (2010). Induced pluripotent stem cell-derived hepatocytes have the functional and proliferative capabilities needed for liver regeneration in mice. *The Journal of Clinical Investigation*, Vol. 120, No. 9, pp. 3120-3126, ISSN 1558-8238
- Evenou, F., Fujii, T. & Sakai, Y. (2007). Liver cells culture on three-dimensional micropatterned polydimethylsiloxane surfaces. *Alternatives to Animal Testing and Experimentation (ALTEX)*, Vol. 14, (August 2007), pp. 21-25, ISSN 1344-0411
- Feng, ZQ., Leach, MK., Chu, XH., Wang, YC., Tian, T., Shi, XL., Ding, YT. & Gu ZZ. (2010). Electrospun chitosan nanofibers for hepatocyte culture. *Journal of Biomedical Nanotechnology*, Vol. 6, No. 6, (December 2010), pp. 658-666, ISSN 1550-7041
- Feng, Q., Lu, SJ., Klimanskaya, I., Gomes, I., Kim, D., Chung, Y., Honig, GR., Kim, KS. & Lanza, R. (2010). Hemangioblastic derivatives from human induced pluripotent stem cells exhibit limited expansion and early senescence. *Stem Cells*, Vol. 28, No. 4., (April 2010), pp. 704-712, ISSN 1549-4918
- Fiegel, HC., Kaufmann, PM., Bruns, H., Kluth, D., Horch, RA., Vacanti, JP. & Kneser, U. (2008). Hepatic tissue engineering: from transplantation to customized cell-based liver directed therapies from the laboratory. *Journal of Cellular and Molecular Medicine*, Vol. 12, No. 1, (January-February 2008), pp. 56-66, ISSN 1582-4934
- Fisher, RL., Ulreich, JB., Nakazato, PZ. & Brendel, K. (2001). Histological and biochemical evaluation of precision cut liver slices. *Toxicology Mechanisms and Methods*, Vol. 11, No. 2, (April 2001), pp. 59-71, ISSN 1537-6524
- Gebhardt, R. (1992). Metabolic zonation of the liver: regulation and implications for liver function. *Pharmacology and Therapeutics*, Vol. 53, No. 3, pp. 275-354, ISSN 1879-016
- Ghaedi, M., Soleimani, M., Shabani, I., Duan, Y. & Lotfi, AS. (2012). Hepatic differentiation from human mesenchymal stem cells on a novel nanofiber scaffold. *Cellular Molecular Biology Letters*, Vol. 7, No. 1, (March 2012), pp. 89-106, ISSN 1689-1392

- Gómez-Lechón, MJ., Lahoz, A., Gombau, L., Castell, JV. & Donato, MT. (2010). *In Vitro* evaluation of potential hepatotoxicity induced by drugs. *Current Pharmaceutical Design*, Vol. 16, No. 17, (June 2010), pp. 1963-1977, ISSN 1873-4286
- Gómez-Lechón, MJ., Castell, JV. & Donato, MT. (2007). Hepatocytes – the choice to investigate drug metabolism and toxicity in man: *In vitro* variability as a reflection of *in vivo*. *Chemico-Biological Interactions*, Vol. 168, No. 1, (May 2007), pp. 30-50, ISSN 1872-7786
- Gores, GJ., Kost, LJ. & LaRusso, NF. (1986). The isolated perfused rat liver: conceptual and practical considerations. *Hepatology*, Vol. 6, No. 3, (May-June 1986), pp. 511-517, ISSN 1527-3350
- Greenbaum, LE. (2010) From skin cells to hepatocytes: advances in application of iPS cell technology. *The Journal of Clinical Investigation*, Vol. 120, No. 9, (September 2010), pp. 3102-3105, ISSN 1558-8238
- Guengerich, FP. (1996). *In vitro* techniques for studying drug metabolism. *Journal of Pharmacokinetics and Biopharmaceutics*, Vol. 24, No. 5, (October 1996), pp. 521-533, ISSN 0090-466
- Guillouzo, A. (1998). Liver cell models in *in vitro* toxicology. *Environmental Health Perspectives*, Vol. 106, No. Suppl.2, (April 1998), pp. 511-532, ISSN 1552-9924
- Guillouzo, A., Corlu, A., Aninat, C., Glaise, D., Morel, F. & Guguen-Guillouzo, C. (2007). The human hepatoma HepaRG cells: A highly differentiated model for studies of liver metabolism and toxicity of xenobiotics. *Chemico-Biological Interactions*, Vol. 168, No. 1, (May 2007), pp. 66-73, ISSN 1872-7786
- Guillouzo, A. & Guguen-Guillouzo, C. (2008). Evolving concepts in liver tissue modelling and implications for *in vitro* toxicology. *Expert Opinion on Drug Metabolism and Toxicology*, Vol. 4, No. 10, (October 2008), pp. 1279-1294, ISSN 1744-7607
- Guzzardi, MA., Vozzi, F. & Ahluwalia, AD. (2009). Study of the Crosstalk Between Hepatocytes and Endothelial Cells Using a Novel Multicompartmental Bioreactor: A Comparison Between Connected Cultures and Cocultures. *Tissue Engineering: Part A*, Vol. 15, No. 11, (November 2009), pp. 3635-3644, ISSN 1937-335X
- Guzzardi, MA., Domenici, C. & Ahluwalia, A. (2011). Metabolic control through hepatocyte and adipose tissue cross-talk in a multicompartmental modular bioreactor. *Tissue Engineering: Part A*, Vol. 17, No. 11-12, (June 2011), pp. 1635-1642, ISSN 1937-335X
- Hammond, TG. & Hammond, JM. (2001). Optimized suspension culture: the rotating-wall vessel. *American Journal of Physiology: Renal Physiology*, Vol. 281, No. 1, (July 2001), pp. 12-25, ISSN 1522-1466
- Hartung, T. (2010). Comparative analysis of the revised Directive 2010/63/EU for the protection of laboratory animals with its predecessor 86/609/EEC – a t4 report. *Alternatives to Animal Experimentation*, Vol. 27, No.4, pagg. 285-303, ISSN 1868-596X
- Hewitt, NJ., Lechón, MJ., Houston, JB., Hallifax, D., Brown, HS., Maurel, P., Kenna, JG., Gustavsson, L., Lohmann, C., Skonberg, C., Guillouzo, A., Tuschl, G., Li, AP., LeCluyse, E., Groothuis, GM. & Hengstler, JG. (2007). Primary hepatocytes: current understanding of the regulation of metabolic enzymes and transporter proteins, and pharmaceutical practice for the use of hepatocytes in metabolism, enzyme induction, transporter, clearance, and hepatotoxicity studies. *Drug Metabolism Reviews*, Vol. 39, No. 1, pp. 159-234, ISSN 1097-9883

- Ho, CT., Lin, RZ., Chang, WY., Chang, HY. & Liu, CH. (2006). Rapid heterogeneous liver-cell on-chip patterning via the enhanced field-induced dielectrophoresis trap. *Lab on a Chip*, Vol. 6, No. 6, (June 2006), pp. 724-734, ISSN 1473-0189
- Hong, SH., Gang, EJ., Jeong, JA., Ahn, C., Hwang, SH., Yang, IH., Park, HK., Han, H. & Kim, H. (2005). *In vitro* differentiation of human umbilical cord blood-derived mesenchymal stem cells into hepatocyte-like cells. *Biochemical and Biophysical Research Communications*, Vol. 330, No. 4, (May 2005), pp. 1153-1161, ISSN 1090-2104
- Houck, KA. & Kavlock, RJ. (2008). Understanding mechanisms of toxicity: insights from drug discovery research. *Toxicology and Applied Pharmacology*, Vol. 227, No. 2, (March 2008), pp. 163-178, ISSN 1096-0333
- Hu, BY., Weick, JP., Yu, J., Ma, LX., Zhang, XQ., Thomson, JA. & Zhang, SC. (2010). Neural differentiation of human induced pluripotent stem cells follows developmental principles but with variable potency. *Proceedings of the National Academy of Sciences of the United States of America*, Vol. 107, No. 9, (March 2010), pp. 4335-4340, ISSN 1091-6490
- Huang, Z., Roy, P. & Waxman, DJ. (2000). Role of human liver microsomal CYP3A4 and CYP2B6 in catalyzing N-dechloroethylation of cyclophosphamide and ifosfamide. *Biochemical Pharmacology*, Vol. 59, No. 8, (April 2000), pp. 961-972, ISSN 1873-2968
- Hunt, CA., Yan, L., Ropella, GEP., Park, S., Sheikh-Bahaei, S. & Roberts, MS. (2007). The multiscale *in silico* liver. *Journal of Critical Care*, Vol. 22, No. 4, (December 2007), pp. 348-349, ISSN 1557-8615
- Hutmacher, DW. & Singh, H. (2008). Computational fluid dynamics for improved bioreactor design and 3D culture. *Trends in Biotechnology*, Vol. 26, No. 4, (April 2008), pp. 166-172, ISSN 1879-3096
- Ijima, H., Murakami, S., Matsuo, T., Takei, T., Ono, T. & Kawakami, K. (2005). Enhancement of liver-specific functions of primary rat hepatocytes co-cultured with bone marrow cells on tissue culture-treated polystyrene surfaces. *Journal of Artificial Organs*, Vol. 8, No. 2, pp. 104-109, ISSN 1619-0904
- Ishii, T., Yasuchika, K., Fukumitsu, K., Kawamoto, T., Kawamura-Saitoh, M., Amagai, Y., Ikai, I., Uemoto, S., Kawase, E., Suemori, H. & Nakatsuji, N. (2010). *In vitro* hepatic maturation of human embryonic stem cells by using a mesenchymal cell line derived from murine fetal livers. *Cell and Tissue Research*, Vol. 339, No. 3, (March 2010), pp. 505-512, ISSN 1432-0878
- Jennen, DG., Magkoufopoulou, C., Ketelslegers, HB., van Herwijnen, MH., Kleinjans, JC., & van Delft, JH. (2010). Comparison of HepG2 and HepaRG by whole-genome gene expression analysis for the purpose of chemical hazard identification. *Toxicological Sciences*, Vol. 115, No. 1, (May 2010), pp. 66-79, ISSN 1096-0929
- Jozefczuk, J., Prigione, A., Chavez, L. & Adjaye, J. (2011). Comparative analysis of human embryonic stem cell and induced pluripotent stem cell-derived hepatocyte-like cells reveals current drawbacks and possible strategies for improved differentiation. *Stem Cells and Development*, Vol. 20, No. 7, (July 2011), pp. 1259-1275, ISSN 1557-8534
- Kanebratt, KP. & Andersson, TB. (2008). Evaluation of HepaRG cells as an *in vitro* model for human drug metabolism studies. *Drug Metabolism and Disposition*, Vol. 36, No. 7, (July 2008), pp. 1444-1452, ISSN 1521-009X

- Khaoustov, VI., Darlington, GJ., Soriano, HE., Krishnan, B., Risen, D., Pellis, NR. & Yoffe, B. (1999). Induction of Three-Dimensional Assembly of Human Liver Cells by Simulated Microgravity. *In vitro Cellular and Developmental Biology - Animal*, Vol. 35, No. 9, (October 1999), pp. 501-509, ISSN 1543-706
- Khetani, SR. & Bhatia, SN. (2008). Microscale culture of human liver cells for drug development. *Nature Biotechnology*, Vol. 26, No. 1, (January 2008), pp. 120-126, ISSN 1546-1696
- Khor, TO., Ibrahim, S. & Kong, AN. (2006). Toxicogenomics in drug discovery and drug development: Potential applications and future challenges. *Pharmaceutical Research*, Vol. 23, No. 8, (August 2006), pp. 1659-1664, ISSN 1573-904
- Kienhuis, A.S., Wortelboer, H.M., Maas, W.J., van Herwijnen, M., Kleinjans, J.C.S., van Delft, J.H.M. & Stierum, R.H. (2007). A sandwich-cultured rat hepatocyte system with increased metabolic competence evaluated by gene expression profiling. *Toxicology in Vitro*, Vol. 21, No. 5, (August 2007), pp. 892-901, ISSN 1879-3177
- Kim, SS., Utsunomiya, H., Koski, JA., Wu, BM., Cima, MJ., Sohn, J., Mukai, K., Griffith, LG. & Vacanti, JP. (1998). Survival and function of hepatocytes on a novel three-dimensional synthetic biodegradable polymer scaffold with an intrinsic network of channels. *Annals of Surgery*, Vol. 228, No. 1, (July 1998), pp. 8-13, ISSN 1528-1140
- Klaus, DM. (2001). Clinostats and bioreactors. *Gravitational and Space Biology Bulletin*, Vol. 14, No. 2, (June 2001), pp. 55-64, ISSN 1089-988
- Krumdieck, CL., dos Santos, JE. & Ho, KJ. (1980). A new instrument for the rapid preparation of tissue slices. *Analytical Biochemistry*, Vol. 104, No. 1, (May 1980), pp. 118-123, ISSN 1096-0309
- Lake, BG., Charzat, C., Tredger, JM., Renwick, AB., Beaman, JA. & Price, R.J. (1996). Induction of cytochrome P450 isoenzymes in cultured precision-cut rat and human liver slices. *Xenobiotica*, Vol. 26, No. 3, (March 1996), pp. 297-306, ISSN 1366-5928
- Lecluyse, EL. (2001). Human hepatocyte culture systems for the *in vitro* evaluation of cytochrome P450 expression and regulation. *European Journal of Pharmaceutical Sciences*, Vol. 13, No. 4, (July 2001), pp. 343-368, ISSN 1879-0720
- Lee, KD., Kuo, TK., Whang-Peng, J., Chung, YF., Lin, CT., Chou, SH., Chen, JR., Chen, YP. & Lee, OK. (2004). *In vitro* hepatic differentiation of human mesenchymal stem cells. *Hepatology*, Vol. 40, No. 6, (December 2004), pp. 1275-1284, ISSN 1527-3350
- Lee, PJ., Hung, PJ. & Lee, LP. (2007). An artificial liver sinusoid with a microfluidic endothelial-like barrier for primary hepatocyte culture. *Biotechnology and Bioengineering*, Vol. 97, No. 5, (August 2007), pp. 1340-1346, ISSN 1097-0290
- Leite, SB., Teixeira, AP., Miranda, JP., Tostões, RM., Clemente, JJ., Sousa, MF., Carrondo, MJT. & Alves, PM. (2011). Merging bioreactor technology with 3D hepatocyte-fibroblast culturing approaches: Improved *in vitro* models for toxicological applications. *Toxicology in Vitro*, Vol. 25, No. 4, (June 2011), pp. 825-832, ISSN 1879-3177
- Li, AP. (2004). Accurate prediction of human drug toxicity: a major challenge in drug development. *Chemico-Biological Interactions*, Vol. 150, No. 1, (November 2004), pp. 3-7, ISSN 1872-7786
- Li, AP. (2008). *In vitro* evaluation of human xenobiotic toxicity: scientific concepts and the novel integrated discrete multiple cell coculture (IdMOC) technology. *Alternatives to Animal Experimentation*, Vol. 25, No. 1, pp. 43-49, ISSN 1868-596

- Li, AP. (2009). The Use of the Integrated Discrete Multiple Organ Co- culture (IdMOC®) System for the Evaluation of Multiple Organ Toxicity. *Alternatives to Laboratory Animals*, Vol. 37, No. 4, (September 2009), pp. 377–385, ISSN 0261-1929
- Lilienblum, W., Dekant, W., Foth, H., Gebel, T., Hengstler, JG., Kahl, R., Kramer, PJ., Schweinfurth, H. & Wollin, KM. (2008). Alternative methods to safety studies in experimental animals: role in the risk assessment of chemicals under the new European Chemicals Legislation (REACH). *Archives of Toxicology*, Vol. 82, No. 4, (April 2008), pp. 211-236, ISSN 1432-0738
- Lindros, KO. (1997). Zonation of cytochrome P450 expression, drug metabolism and toxicity in liver. *General Pharmacology*, Vol. 28, No. 2, (February 1997), pp. 191-196, ISSN 0306-3623
- Liu, H., Ye, Z., Kim, Y., Sharkis, S. & Jang, YY. (2010). Generation of endoderm-derived human induced pluripotent stem cells from primary hepatocytes. *Hepatology*, Vol. 51, No. 5, (May 2010), pp. 1810–1819, ISSN 1527-3350
- Liu, H., Kim, Y., Sharkis, S., Marchionni, L. & Jang, YY. (2011). *In Vivo* Liver Regeneration Potential of Human Induced Pluripotent Stem Cells from Diverse Origins. *Science Translational Medicine*, Vol. 3, No. 82, (May 2011), p. 82ra39, ISSN 1946-6242
- Liu, T., Zhang, S., Chen, X., Li, G. & Wang, Y. (2010). Hepatic differentiation of mouse embryonic stem cells in three-dimensional polymer scaffolds. *Tissue Engineering: Part A*, Vol. 16, No. 4, (April 2010), pp. 1115-1122, ISSN 1937-335X
- Liu Tsang, V., Chen, AA., Cho, LM., Jadin, KD., Sah, RL., DeLong, S., West, JL. & Bhatia, SN. (2007). Fabrication of 3D hepatic tissues by additive photopatterning of cellular hydrogels. *The FASEB Journal*, Vol. 21, No. 3, (March 2007), pp.790–801, ISSN 1530-6860
- Lu, C. & Li, AP. (2001). Species comparison in P450 induction: effects of dexamethasone, omeprazole, and rifampin on P450 isoforms 1A and 3A in primary cultured hepatocytes from man, Sprague-Dawley rat, minipig, and beagle dog. *Chemico-biological interactions*, Vol. 134, No. 3, (May 2001), pp. 271-281, ISSN 1872-7786
- Mae, T., Inaba, T., Konishi, E., Hosoe, K. & Hidaka, T. (2000). Identification of enzymes responsible for rifalazil metabolism in human liver microsomes. *Xenobiotica*, Vol. 30, No. 6, (June 2000), pp. 565–574, ISSN 1366-5928
- Maguire, T., Davidovich, AE., Wallenstein, EJ., Novik, E., Sharma, N., Pedersen, H., Androulakis, IP., Schloss, R. & Yarmush, M. (2007). Control of hepatic differentiation via cellular aggregation in an alginate microenvironment. *Biotechnology and Bioengineering*, Vol. 98, No. 3, (October 2007), pp. 631–644, ISSN 1097-0290
- Malatesta, M., Perdoni, F., Santin, G., Battistelli, S., Muller, S. & Biggiogera, M. (2008). Hepatoma tissue culture (HTC) cells as a model for investigating the effects of low concentrations of herbicide on cell structure and function. *Toxicology in Vitro*, Vol. 22, No. 8, (December 2008), pp. 1853–1860, ISSN 1879-3177
- Martin, Y. & Vermette, P. (2005). Bioreactors for tissue mass culture: design, characterization, and recent advances. *Biomaterials*, Vol. 26, No. 35, (December 2005), pp. 7481-7503, ISSN 1878-5905
- Mazzoleni, G., Steimberg, N., Boniotti, J., Penza, L., Montani, C., Maggi, A., Ciana, P. & Di Lorenzo, D. (2008). Evaluation of Estrogen Receptor Interacting Compounds (ER-ICs) activity in a 3D ex-vivo model of mouse liver: comparison with the *in vivo*

- situation. *Proceedings of the Workshop "New animal models and in vitro systems for the pharmaco-toxicology of Nuclear Receptors Interacting Compounds (NR-ICs)", 24th European Congress of Comparative Endocrinology*. Genova (Italy), (September 2008), pp. 23-24.
- Mazzoleni, G., Di Lorenzo, D. & Steimberg, N. (2009). Modelling tissues in 3D: the next future of pharmaco-toxicology and food research? *Genes and Nutrition*, Vol. 4, No. 1 (March 2009), pp. 13-22, ISSN 1555-8932
- Mazzoleni, G. & Steimberg, N. (2010). 3D culture in microgravity: a realistic alternative to experimental animal use. *Alternatives to Animal Experimentation*, Vol. 27, special issue, pp. 321-324, ISSN 0946-7785
- Mazzoleni, G., Boukhechba, F., Steimberg, N., Boniotti, J., Bouler, JM. & Rochet, N. (2011). Impact of the dynamic culture condition in the RCCS™ bioreactor on a three-dimensional model of bone formation. *Procedia Engineering*, Vol. 10, pp. 3662-3667, ISSN 1877-7058
- Meng, Q. (2010). Three-dimensional culture of hepatocytes for prediction of drug-induced hepatotoxicity. *Expert Opinion on Drug Metabolism and Toxicology*, (June 2010) Vol. 6, No. 6, pp. 733-746, ISSN 1742-5255
- Meuwly, F., Ruffieux, PA., Kadouri, A. & von Stockar, U. (2007). Packed-bed bioreactors for mammalian cell culture: bioprocess and biomedical applications. *Biotechnology Advances*, Vol. 25, No. 1, (January-February 2007), pp. 45-56, ISSN 1873-1899
- Miranda, JP., Rodrigues, A., Tostões, RM., Leite, S., Zimmerman, H., Carrondo, MJ. & Alves, PM. (2010). Extending hepatocyte functionality for drug-testing applications using high-viscosity alginate-encapsulated three-dimensional cultures in bioreactors. *Tissue Engineering, Part C*, Vol. 16, No. 6, (December 2010), pp. 1223-1232, ISSN 1937-3392
- Mitzner, SR., Stange, J., Klammt, S., Peszynski, P., Schmidt, R. & Nöldge-Schomburg, G. (2001). Extracorporeal detoxification using the Molecular Adsorbent Recirculating System for critically ill patients with liver failure. *Journal of the American Society of Nephrology*, Vol. 12, No. suppl 17, (February 2001), pp. S75-S82, ISSN 1533-3450
- Nahmias, Y., Berthiaume, F. & Yarmush, ML. (2006). Integration of technologies for hepatic tissue engineering. *Advances in Biochemical Engineering/Biotechnology*, Vol. 103, pp. 309-329, ISSN 1616-8542
- Nakao, Y., Kimura, H., Sakai, Y. & Fujii, T. (2011). Bile canaliculi formation by aligning rat primary hepatocytes in a microfluidic device. *Biomicrofluidics*, Vol. 5, No. 2, (June 2011), pp. 22212-1-22212-7, ISSN 1932-1058
- NRC Committee on Toxicity Testing and Assessment of Environmental Agents, National Research Council of the National Academies. Washington, D.C. (2007). *Toxicity Testing in the 21st century. A vision and a strategy*. Report of the Committee on Toxicity Testing and Assessment on Environmental Agents, The National Academies Press. Retrieved from http://www.nap.edu/catalog.php?record_id=11970
- O'Brien, PJ., Irwin, W., Diaz, D., Howard-Cofield, E., Krejsa, CM., Slaughter, MR., Gao, B., Kaludercic, N., Angeline, A., Bernardi, P., Brain, P. & Hougham, C. (2006). High concordance of drug-induced human hepatotoxicity with *in vitro* cytotoxicity measured in a novel cell- based model using high content screening. *Archives of Toxicology*, Vol. 80, No. 9, (September 2006), pp. 580-604, ISSN 1432-0738

- O'Brien, P.J., Chan, K. & Silber, P. (2004). Human and animal hepatocytes *in vitro* with extrapolation *in vivo*. *Chemico-Biological Interactions*, Vol. 150, No. 1, (November 2004), pp. 97-114, ISSN 1872-7786
- Ohashi, K., Yokoyama, T., Yamato, M., Kuge, H., Kanehiro, H., Tsutsumi, M., Amanuma, T., Iwata, H., Yang, J., Okano, T. & Nakajima Y. (2007). Engineering functional two- and three-dimensional liver systems *in vivo* using hepatic tissue sheets. *Nature Medicine*, Vol. 13, No. 7, (July 2007), pp. 880-885, ISSN 1546-170
- Ohno M., Motojima, K., Okano, T. & Taniguchi, A. (2008). Up-Regulation of Drug-Metabolizing Enzyme Genes in Layered Co-Culture of a Human Liver Cell Line and Endothelial Cells. *Tissue Engineering: Part A*, Vol. 14, No. 11, (November 2008), pp. 1861-186, ISSN 1937-335X
- Okura, H., Komoda, H., Saga, A., Kakuta-Yamamoto, A., Hamada, Y., Fumimoto, Y., Lee, CM., Ichinose, A., Sawa, Y. & Matsuyama, A. (2010). Properties of hepatocyte-like cell clusters from human adipose tissue-derived mesenchymal stem cells. *Tissue Engineering: Part C*, Vol. 16, No. 4, (August 2010), pp. 761-770, ISSN 1937-3392
- Omiecinski, C.J., Vanden Heuvel, J.P., Perdew, G.H. & Peters, J.M. (2011). Xenobiotic metabolism, disposition, and regulation by receptors: from biochemical phenomenon to predictors of major toxicities. *Toxicological Sciences*, Vol. 120, No. Suppl1, (March 2011), pp. S49-75, ISSN 1096-0929
- Pampaloni, F., Reynaud, E.G. & Stelzer, E.H. (2007). The third dimension bridges the gap between cell culture and live tissue. *Nature Reviews. Molecular Cell Biology*, Vol. 8, No. 10, (October 2007), pp. 839-845, ISSN 1471-0080
- Park, K., Williams, D.P., Naisbitt, D.J., Kitteringham, N.R. & Pirmohamed, M. (2005). Investigation of toxic metabolites during drug development. *Toxicology and Applied Pharmacology*, Vol. 207, No. 2 suppl, (September 2005), pp. 425-434, ISSN 1096-0333
- Pauli-Magnus, C. & Meier, P.J. (2003). Pharmacogenetics of hepatocellular transporters. *Pharmacogenetics*, Vol. 13, No. 4, (April 2003), pp. 189-198, ISSN 0960-314X
- Payen, L., Courtois, A., Vernhet, L., Guillouzo, A. & Fardel, O. (1999). The Multidrug Resistance-Associated Protein (Mrp) Is Over-Expressed And Functional In Rat Hepatoma Cells. *International Journal of Cancer*, Vol. 81, No. 3, (May 1999), pp. 479-485, ISSN 1097-0215
- Petersen, B.E., Bowen, W.C., Patrene, K.D., Mars, W.M., Sullivan, A.K., Murase, N., Boggs, S.S., Greenberger, J.S. & Goff, J.P. (1999). Bone marrow as a potential source of hepatic oval cells. *Science*, Vol. 284, No. 5417, (May 1999), pp. 1168-1170, ISSN 1095-9203
- Popovic, J.R. & Kozak, L.J. (2000). National hospital discharge survey: annual summary, 1998. *Vital Health Statistics*, Vol. 13, No. 148, (September 2000), pp. 1-194, ISSN 0083-2006.
- Rambhatla, L., Chiu, C.P., Kundu, P., Peng, Y. & Carpenter, M.K. (2003). Generation of hepatocyte-like cells from human embryonic stem cells. *Cell Transplantation*, Vol. 12, No. 1, pp. 1-11, ISSN 1555-3892
- Rangarajan, A., Hong, S.J., Gifford, A. & Weinberg, R.A. Species- and cell type-specific requirements for cellular transformation. *Cancer Cell*, Vol. 6, No. 2, (August 2004), pp. 171-183, ISSN 1878-3686
- Rawden, H.C., Carilie, D.J., Tindall, A., Hallifax, D., Galetin, A., Ito, K. & Houston, J.B. (2005). Microsomal prediction on *in vivo* clearance and associated interindividual

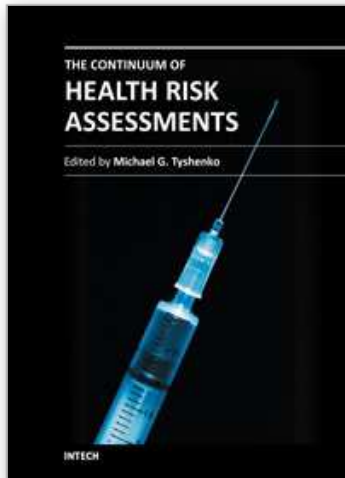
- variability of six benzodiazepines in humans. *Xenobiotica*, Vol. 35, No. 6, pp. 603–625, (June 2005), ISSN 1366-5928
- Riccaltan-Banks, L., Liew, C., Bhandari, R., Fry, J. & Shakesheff, K. (2003). Long-term culture of functional liver tissue: three-dimensional coculture of primary hepatocytes and stellate cells. *Tissue Engineering*, Vol. 9, No. 3, (June 2003), pp. 401-410, ISSN 1557-8690
- Richert, L., Liguori, M.J., Abadie, C., Heyd, B., Manton, G., Halkic, N. & Waring, J.F. (2006). Gene expression in human hepatocytes in suspension after isolation is similar to the liver of origin, is not affected by hepatocyte cold storage and cryopreservation, but is strongly changed after hepatocyte plating. *Drug Metabolism and Disposition*, Vol. 34, No. 5, (May 2006), pp. 870–879, ISSN 1521-009
- Ring, A., Gerlach, J., Peters, G., Pazin, B.J., Minervini, C.F., Turner, M.E., Thompson, R.L., Triolo, F., Gridelli, B. & Miki, T. (2010). Hepatic maturation of human fetal hepatocytes in four-compartment three-dimensional perfusion culture. *Tissue Engineering, Part C*, Vol. 16, No. 5, (October 2010), pp. 835-845, ISSN 1937-3392
- Ruhnke, M., Ungefroren, H., Nussler, A., Martin, F., Brulport, M., Schormann, W., Hengstler, J.G., Klapper, W., Ulrichs, K., Hutchinson, J.A., Soria, B., Parwaresch, R.M., Heeckt, P., Kremer, B. & Fändrich, F. (2005). Differentiation of *In Vitro*-Modified Human Peripheral Blood Monocytes Into Hepatocyte-like and Pancreatic Islet-like Cells. *Gastroenterology*, Vol. 128, No. 7, (June 2005), pp. 1774–1786, ISSN 1528-0012
- Russel, W.M.S. & Burch, R.L. (1959). *The Principles of Humane Experimental Technique*, Methuen & Co. Ltd., London: pagg. 169-154, ISBN 0900767782 and now retrievable on http://altweb.jhsph.edu/pubs/books/humane_exp/het-toc
- Schoonen, W.G., Westerink, W.M. & Horbach, G.J. (2009). High-throughput screening for analysis of *in vitro* toxicity. *Experientia*, Vol. 99, pp. 401–452, ISSN 1023-294
- Schumacher, K., Khong, Y.M., Chang, S., Ni, J., Sun, W. & Yu, H. (2007). Perfusion culture improves the maintenance of cultured liver tissue slices. *Tissue Engineering*, Vol. 13, No. 1, (January 2007), pp. 197-205, ISSN 1557-8690
- Shvartsman I., Dvir T., Harel-Adar T. & Cohen S. (2009). Perfusion cell seeding and cultivation induce the assembly of thick and functional hepatocellular tissue-like constructs. *Tissue Engineering: Part A*, Vol. 14, No. 4, (April 2009), pp. 751-760, ISSN 1937-335X
- Schwartz, R.E., Reyes, M., Koodie, L., Jiang, Y., Blackstad, M., Lund, T., Lenvik, T., Johnson, S., Hu, W.S. & Verfaillie, C.M. (2002). Multipotent adult progenitor cells from bone marrow differentiate into functional hepatocytes. *Journal of Clinical Investigation*, Vol. 109, No. 10, (May 2002), pp. 1291–1302, ISSN 1558-8238
- Schwarz, R.P., Goodwin, T.J. & Wolf, D.A. (1992). Cell culture for three-dimensional modeling in rotating-wall vessels: an application of simulated microgravity. *Journal of Tissue Culture Methods*, Vol. 14, No. 2, pp. 51-57, ISSN 0271-8057
- Selden, C., Khalil, M. & Hodgson, H.J.F. (1999). What keeps hepatocytes on the straight and narrow? Maintaining differentiated function in the liver. *Gut*, Vol. 44, No. 4, (April 1999), pp. 443-446, ISSN 1468-3288
- Şahin, S. (2003). Perfused Liver Preparation and its Applications. *FABAD Journal of Pharmaceutical Sciences*, Vol. 28, pp. 39-49, ISSN 300-4182

- Si-Tayeb, K., Noto, FK., Nagaoka, M., Li, J., Battle, MA., Duris, C., North, PE., Dalton, S. & Duncan, SA. (2010). Highly efficient generation of human hepatocyte-like cells from induced pluripotent stem cells. *Hepatology*, Vol. 51, No. 1, (January 2010), pp. 297-305, ISSN 1527-3350
- Sivaraman, A., Leach, JK., Townsend, S., Iida, T., Hogan, BJ., Stolz, DB., Fry, R., Samson, LD., Tannenbaum, SR. & Griffith, LG. (2005). A microscale *in vitro* physiological model of the liver: predictive screens for drug metabolism and enzyme induction. *Current Drug Metabolism*, Vol. 6, No. 6, (December 2005), pp. 569-591, ISSN 1875-5453
- Slany, A., Haudek, V. J., Zwickl, H., Gundacker, N. C., Grusch, M., Weiss, T. S., Seir, K., Rodgarkia-Dara, C., Hellerbrand, C. & Gerner, C. (2010). Cell characterization by proteome profiling applied to primary hepatocytes and hepatocyte cell lines Hep-G2 and Hep-3B. *Journal of Proteome Research*, Vol. 9, No. 1, (January 2010), pp. 6-21, ISSN 1535-3907
- Snykers, S., De Kock, J., Vanhaecke, T. & Rogiers, V. (2007). Differentiation of neonatal rat epithelial cells from biliary origin into immature hepatic cells by sequential exposure to hepatogenic cytokines and growth factors reflecting liver development. *Toxicology in Vitro*, Vol. 21, No. 7, (October 2007), pp. 1325-1331, ISSN 1879-3177
- Soars, MG., McGinnity, DF., Grime, K. & Riley, RJ. (2007). The pivotal role of hepatocytes in drug discovery. *Chemico-biological interactions*, Vol. 168, No. 1, (May 2007), pp. 2-15, ISSN 1872-7786
- Soto-Gutiérrez A., Navarro-Alvarez, N., Zhao, D., Rivas-Carrillo, JD., Lebkowski, J., Tanaka, N., Fox, IJ. & Kobayashi, N. (2007). Differentiation of mouse embryonic stem cells to hepatocyte-like cells by co-culture with human liver nonparenchymal cell lines. *Nature Protocols*, Vol. 2, No. 2, pp. 347-356, ISSN 1754-2189
- Stephens, ML., Barrow, C., Andersen, ME., Boekelheide, K., Carmichael, PL., Holsapple, MP. & Lafranconi, M. (2012). Accelerating the development of 21st-century toxicology: outcome of a human toxicology project consortium workshop. *Toxicological Sciences*, Vol. 125, No.2, (February 2012), pp. 327-334, ISSN 1096-0929
- Steimberg, N., Zarattini, G., Morandini, E., Pazzaglia, UE. & Mazzoleni, G. (2009). 3D culture of articular cartilage explants: new perspectives for future possible clinical applications. *The Journal of Bone Joint Surgery, British volume, Proceedings*, Vol. 91-B(II), pp: 269, ISSN 0301-620
- Steimberg, N., Boniotti, J. & Mazzoleni, G. (2010). 3D culture of primary chondrocytes, cartilage, and Bone/cartilage explants in simulated microgravity. In: *Methods in Bioengineering: Alternative Technologies to Animal Testing*, Maguire and Novak, pp. 205- 212, ISBN 978-1-60807-011-4, Boston, USA
- Sullivan, G.J., Hay, DC., Park, IH., Fletcher, J., Hannoun, Z., Payne, CM., Dalgetty, D., Black, JR., Ross, JA., Samuel, K., Wang, G., Daley, GQ., Lee, JH., Church, GM., Forbes, SJ., Iredale, JP. & Wilmot, I. (2010). Generation of functional human hepatic endoderm from human induced pluripotent stem cells. *Hepatology*, Vol. 51, No. 1, (January 2010), pp. 329-335, ISSN 1527-3350
- Suzuki, H., Inoue, T., Matsushita, T., Kobayashi, K., Horii, I., Hirabayashi, Y. & Inoue T. (2008). In vitro gene expression analysis of hepatotoxic drugs in rat primary hepatocytes. *Journal of Applied Toxicology*, Vol. 28, No. 2, (March 2008), pp. 227-236, ISSN 1099-1263

- Takahashi, K., Tanabe, K., Ohnuki, M., Narita, M., Ichisaka, T., Tomoda, K. & Yamanaka, S. (2007). Induction of pluripotent stem cells from adult human fibroblasts by defined factors. *Cell*, Vol. 131, No. 5, (November 2007), pp. 861– 872, ISSN 1097-4172
- Török, E., Pollok, JM., Ma, PX., Vogel, C., Dandri, M., Petersen, J., Burda, MR., Kaufmann, PM., Kluth, D. & Rogiers, X. (2001). Hepatic tissue engineering on 3-dimensional biodegradable polymers within a pulsatile flow bioreactor. *Digestive Surgery*, Vol. 18, No. 3, pp. 196-203, ISSN 1421-9883
- Tosh, D., Shen, C. N. & Slack, J. M. (2002). Differentiated properties of hepatocytes induced from pancreatic cells. *Hepatology*, Vol. 36, No. 3, (September 2002), pp. 534–543, ISSN 1527-3350
- Turner, R., Lozoya, O., Wang, Y., Cardinale, V., Gaudio, E., Alpini, G., Mendel, G., Wauthier, E., Barbier, C., Alvaro, D. & Reid, LM. (2011). Human hepatic stem cell and maturational liver lineage biology. *Hepatology*, Vol. 53, No. 3, (March 2011), pp. 1035-1045, ISSN 1527-3350
- Unsworth, BR. & Lelkes, PI. (1998). Growing tissues in microgravity. *Nature Medicine*, Vol. 4, No. 8, (August 1998), pp. 901-907, ISSN 1546-170
- U.S. EPA. (2009). The U.S. Environmental Protection Agency's Strategic Plan for Evaluating the Toxicity of Chemicals. Washington, DC: In *U.S. Environmental Protection Agency*. (2009). Available from <http://www.epa.gov/spc/toxicitytesting/index.htm>.
- Valerio, LG. Jr. (2009). *In silico* toxicology for the pharmaceutical sciences. *Toxicology and Applied Pharmacology*, Vol. 241, No. 3, (December 2009), pp. 356–370, ISSN 1096-0333
- Van de Bovenkamp, M., Groothuis, GMM., Meijer, DKF. & Olinga, P. (2007). Liver fibrosis *in vitro*: cell culture models and precision-cut liver slices. *Toxicology in Vitro*, Vol. 21, No. 4, (June 2007), pp. 545-557, ISSN 1879-3177
- Vanhaecke, T., Snykers, S., Rogiers, V., Garthoff, B., Castell, JV. & Hengstler, JG. (2009). EU research activities in alternative testing strategies: current status and future perspectives. *Archives of Toxicology*, Vol. 83, No. 12, (December 2009), pp.1037-1042, ISSN 1432-0738
- Vickers, AE., Fisher, R., Olinga, P. & Dial, S. (2011). Repair pathways evident in human liver organ slices. *Toxicology in Vitro*, Vol. 25, No. 7, (October 2011), pp.1485-1492, ISSN 1879-3177
- Vunjak-Novakovic, G., Searby, N., De Luis, J. & Freed, LE. (2002). Microgravity studies of cells and tissues. *Annals of the New York Academy of Sciences*, Vol. 974, pp. 504-517, ISSN 1749-6632
- Walker, TM. & Woodrooffe, AJ. (2001) Cytochrome P450 activity in control and induced long-term cultures of rat hepatocyte spheroids. *Toxicology in Vitro*, Vol. 15, No. 6, (December 2001), pp. 713–719, ISSN 1879-3177
- Wang, S., Nagrath, D., Chen, PC., Berthiaume, F. & Yarmush, ML. (2008). Three-dimensional primary hepatocyte culture in synthetic self-assembling peptide hydrogel. *Tissue Engineering: Part A*, Vol. 14, No. 2, (February 2008), pp. 1-10, ISSN 1937-335
- Werner, A., Duvar, S., Müthing, J., Büntemeyer, H., Lüsdrof, H., Strauss, M. & Lehmann, J. (2000). Cultivation of Immortalized Human Hepatocytes HepZ on Macroporous CultiSpher G Microcarriers. *Biotechnology and Bioengineering*, Vol. 68, No. 1, (April 2000), pp. 59–70, ISSN 1097-0290

- Whitebread, S., Hamon, J., Bojanic, D. & Urban L. (2005). *In vitro* safety pharmacology profiling: an essential tool for successful drug development. *Drug Discovery Today*, Vol. 10, No. 21, (November 2005), pp. 1421-1433, ISSN 1878-5832
- Wilkening, S. & Bader, A. (2003). Influence of culture time on the expression of drug-metabolizing enzymes in primary human hepatocytes and hepatoma cell line HepG2. *Journal of Biochemical and Molecular Toxicology*, Vol. 17, No. 4, pp. 207-213, ISSN 1099-0461
- Wurm, M., Lubei, V., Caronna, M., Hermann, M., Buttiglieri, S., Bodamer, O., Muehl A., Tetta C., Margreiter R. & Hengster P. (2009). Introduction of a novel prototype bioartificial liver support system utilizing small human hepatocytes in rotary culture. *Tissue Engineering Part A*, Vol. 15, No. 5, pp. 1063-1073, ISSN 1937-335X
- Xu, JJ., Diaz, D. & O'Brien, PJ. (2004). Applications of cytotoxicity assays and pre-lethal mechanistic assays for assessment of human hepatotoxicity potential. *Chemico-Biological Interactions*, Vol. 150, No. 1, (November 2004), pp. 115-128, ISSN 1872-7786
- Yoffe, B., Darlington, GJ., Soriano, HE., Krishnan, B., Risin, D., Pellis, NR. & Khaustov, VI. (1999). Cultures of human liver cells in simulated microgravity environment. *Advances in Space Research*, Vol. 24, No. 6, pp. 829-836, ISSN 0273-1177
- Zhang, L., Theise, N., Chua, M. & Reid, LM. (2008). The Stem Cell Niche of Human Livers: Symmetry Between Development and Regeneration. *Hepatology*, Vol. 48, No. 5, (November 2008), pp. 1598-1607, ISSN 1527-3350
- Zucco, F., De Angelis, I., Testai, E. & Stamatii, A. (2004). Toxicology investigations with cell culture systems: 20 years after. *Toxicology in Vitro*, Vol. 18, No. 2, (April 2004), pp. 153-163, ISSN 1879-3177

IntechOpen



The Continuum of Health Risk Assessments

Edited by Dr. Michael G. Tyshenko

ISBN 980-953-307-582-7

Hard cover, 194 pages

Publisher InTech

Published online 16, May, 2012

Published in print edition May, 2012

This book presents a collection of health risk assessments for known and emerging hazards that span a continuum. Case studies for existing health risks include psychoactive drug usage in delivery truck drivers and using look-back risk assessment for accidental syringe re-use in healthcare settings. Case studies for emerging risks include precautionary actions to safeguard blood supplies; nanoparticle deposition in the lung; and the epistemic issues surrounding genetically modified organism risk assessments. The final section of the book deals with advancing health risk assessment analyses through a post-genomics lens and provides case studies on personalized genomics, new data analyses and improving in silico models for risk assessment. These case studies provide much insight into the ongoing evolution of health risk assessments.

How to reference

In order to correctly reference this scholarly work, feel free to copy and paste the following:

Giovanna Mazzoleni and Nathalie Steimberg (2012). New Models for the In Vitro Study of Liver Toxicity: 3D Culture Systems and the Role of Bioreactors, The Continuum of Health Risk Assessments, Dr. Michael G. Tyshenko (Ed.), ISBN: 980-953-307-582-7, InTech, Available from: <http://www.intechopen.com/books/the-continuum-of-health-risk-assessments/new-models-for-the-in-vitro-study-of-liver-toxicity-3d-culture-systems-and-the-role-of-bioreactors>

INTECH
open science | open minds

InTech Europe

University Campus STeP Ri
Slavka Krautzeka 83/A
51000 Rijeka, Croatia
Phone: +385 (51) 770 447
Fax: +385 (51) 686 166
www.intechopen.com

InTech China

Unit 405, Office Block, Hotel Equatorial Shanghai
No.65, Yan An Road (West), Shanghai, 200040, China
中国上海市延安西路65号上海国际贵都大饭店办公楼405单元
Phone: +86-21-62489820
Fax: +86-21-62489821

© 2012 The Author(s). Licensee IntechOpen. This is an open access article distributed under the terms of the [Creative Commons Attribution 3.0 License](#), which permits unrestricted use, distribution, and reproduction in any medium, provided the original work is properly cited.

IntechOpen

IntechOpen