

We are IntechOpen, the world's leading publisher of Open Access books Built by scientists, for scientists

4,800

Open access books available

122,000

International authors and editors

135M

Downloads

Our authors are among the

154

Countries delivered to

TOP 1%

most cited scientists

12.2%

Contributors from top 500 universities



WEB OF SCIENCE™

Selection of our books indexed in the Book Citation Index
in Web of Science™ Core Collection (BKCI)

Interested in publishing with us?
Contact book.department@intechopen.com

Numbers displayed above are based on latest data collected.

For more information visit www.intechopen.com



Structure and Dynamics of Proteins from Nuclear Magnetic Resonance Spectroscopy

Homayoun Valafar and Stephanie J. Irausquin
*University of South Carolina, Columbia, SC,
USA*

1. Introduction

Nuclear Magnetic Resonance (NMR) spectroscopy has become an indispensable tool in the characterization of structure and dynamics of biological macromolecules such as proteins. In recent years, NMR spectroscopy has contributed to our understanding of protein biophysics, especially when considering time-averaged dynamical events spanning various time scales. It has also played an important role in structural genomics and protein structure initiatives. The main focus of this chapter is to introduce the NMR phenomenon by providing a broad description of NMR spectroscopy and its contribution to the characterization of structure and dynamics of proteins.

2. Traditional experimental approaches to structure determination of proteins

Traditional experimental approaches to structure determination include X-ray crystallography and solution-state NMR spectroscopy. Presently, X-ray crystallography continues to be the most applied technique for the structural characterization of proteins and protein complexes at atomic resolution (Sali *et al.*, 2003); as is evidenced by the Protein Data Bank (PDB), which currently reports approximately 87% of their structures as being acquired by this particular method (Berman *et al.*, 2000). Crystallography begins with the expression and purification of the protein or proteins of interest. The subsequent step is to produce crystals of sufficient quality (at least 2.5Å), in order to obtain high-resolution data for structure determination (Liu & Hsu, 2005; Sali *et al.*, 2003). Typical X-ray diffraction experiments require only a small single crystal sample (of a few micrometers) in order to physically interrupt the flow of X-rays from a source and cause them to scatter or diffract (Ooi, 2010). Diffracted X-rays are then identified by a detector (Ooi, 2010). The way in which X-rays are diffracted depends on the structure of the crystal; therefore the diffraction pattern that results is unique to each structure (Ooi, 2010). Data collected by the detector is then processed so as to create a visual image of the information. This allows for the direct inference of the types and arrangements of atoms, molecules and/or ions, as well as bond lengths and angles within the crystal (Ooi, 2010). Crystallization is often regarded as a slow and resource-intensive method (Liu & Hsu, 2005). What's more, since crystallization conditions cannot be predetermined, it is often necessary to screen a wide range of conditions related to pH, salt, protein concentration, and cofactors (Liu & Hsu, 2005; Sali *et al.*, 2003). Although recent technologies allowing for the use of smaller sample volumes has

led to the automation of high-throughput crystallization, most structures will still require a great deal of time (sometimes as long as days or weeks) in order to produce a high-resolution structure (Abola *et al.*, 2000; Ooi, 2010; Sali *et al.*, 2003). This includes the iterative process of refinement, in which the molecular model is continually compared to the experimental data utilizing statistical methods (Ooi, 2010). Except for the exceptionally rare case of well-ordered crystals from rigid molecules, disorder (which is commonly modeled as part of the refinement process) is a common phenomenon that occurs when some of the atoms in the structure adopt different orientations within different unit cells in the crystal (Ooi, 2010). Disorder may take on the form of discrete conformational sub-states for side chains or surface loops, or even small changes in the orientation of entire molecules throughout the crystal (Adams *et al.*, 2003; Wilson & Brunger, 2000). In addition, crystal structures of multi-component systems and membrane proteins are still limited and refractory for structure determination (Liu & Hsu, 2005). Despite these limitations, X-ray crystallography represents a mature approach (Adams *et al.*, 2003) and continues to be regarded as the 'gold standard' for structure determination (Sali *et al.*, 2003).

The field of NMR, on the other hand, is still relatively young and constantly evolving (Markley *et al.*, 2003). In fact only about 12% of the total structures deposited at the PDB are determined by NMR (Berman *et al.*, 2000). Since NMR does not require crystals in order to produce a three-dimensional structure, samples appropriate for structure determination can be identified relatively quickly (Liu & Hsu, 2005). In addition, NMR experiments can be conducted in aqueous solutions under conditions that are physiologically similar to those in which the protein normally functions (Liu & Hsu, 2005; Montelione *et al.*, 2000). Protein NMR methods have advanced to the point that small to medium sized protein domain structures may be determined rather routinely (Markley *et al.*, 2003). Conventional protein NMR experiments first require successful expression and preparation (purification, isotopic labeling, sample concentration and stability) (Christendat *et al.*, 2000; Markley *et al.*, 2003). NMR methods resolve signals from ^1H , ^{15}N , and ^{13}C nuclei of a protein and assign them to specific nuclei in the structure of a molecule (Markley *et al.*, 2003). The assigned chemical shifts are then able to provide reliable information, which reveal the secondary structure of the protein (Markley *et al.*, 2003; Wishart & Nip, 1998; Wishart & Sykes, 1994; Wishart *et al.*, 1991, 1992). Similar to X-ray crystallography, refinement continues iteratively until a self-consistent set of experimental constraints produces a collection of structures that also satisfies standard covalent geometry and steric overlap considerations (Markley *et al.*, 2003). Additional structural restraints may be acquired by evaluating data from one or more different classes of NMR experiments. For example, NOE spectra provide ^1H - ^1H distance constraints; three-bond J coupling experiments specify torsion angle restraints; and residual dipolar couplings from partially ordered proteins provide both distance and spatial constraints for pairs of coupled nuclei (Markley *et al.*, 2003). NMR spectroscopy is capable of performing structural studies of small proteins which display any one of the following characteristics: partial disorder, multiple stable conformations, weak interactions with important ligands or cofactors, or do not crystallize readily (Markley *et al.*, 2003). Moreover, it is a method that can also reveal critical information with regard to overall protein-folding, the existence of multiple-folded conformations, protein-ligand or protein-protein interactions, and even local dynamics (Markley *et al.*, 2003). In fact, the clear advantage of NMR methods is that they are able to deliver the timescale of transitions (from picoseconds to seconds) at atomic resolution in steady-state conditions (Henzler-Wildman & Kern, 2007).

3. A brief introduction to NMR spectroscopy

NMR spectroscopy is a technique that relies on the magnetic precession that is observed when the nuclei of certain atoms are immersed in a magnetic field (Berg *et al.*, 2002; Hornak, 1997). A limited number of isotopes display this property; the most biochemically common isotopes for experiments with proteins and nucleic acids include hydrogen-1 (^1H), carbon-13 (^{13}C), nitrogen-15 (^{15}N), and phosphorous-31 (^{31}P) (Berg *et al.*, 2002). Protons, electrons, and neutrons possess quantum spin, which are described in multiples of $\frac{1}{2}$ and can be either positive or negative (Hornak, 1997). For simplicity's sake we discuss NMR concepts using the hydrogen nucleus, which contains one proton, as an example. The spinning of a proton produces a magnetic moment, which can take on one of two orientations or spin states (referred to as α and β) when a magnetic field is applied (Berg *et al.*, 2002). The energy difference between the two states is proportional to the strength of the magnetic field (Berg *et al.*, 2002). Because the α state is aligned with the field, it is slightly more populated and therefore has a slightly lower energy (Berg *et al.*, 2002). By providing a pulse of electromagnetic radiation that corresponds to the energy difference between the α and β states, a spinning proton in the α state can be raised to a β or excited state, allowing a resonance to be acquired (Berg *et al.*, 2002). A resonance spectrum can be obtained for any molecule either by altering the amount of electromagnetic radiation while the magnetic field stays constant, or by changing the magnetic field while the frequency of electromagnetic radiation remains constant (Berg *et al.*, 2002). These properties can then be used to analyze the chemical environment of the hydrogen nucleus (Berg *et al.*, 2002). The flow of electrons around a magnetic nucleus produces a small magnetic field which opposes that of the externally applied field (Berg *et al.*, 2002). The electron density around each nucleus in a molecule varies as a result of the type of nuclei and bonds in the molecule (Hornak, 1997). Nuclei in different environments will also resonate at slightly different field strengths or radiation frequencies (Berg *et al.*, 2002). Nuclei of a perturbed sample absorb electromagnetic radiation at a frequency which can be measured (Berg *et al.*, 2002). The difference between the resonance frequency of the nucleus and a standard, relative to the standard is referred to as a chemical shift and is reported in parts per million (ppm, symbolized by δ), usually with values between 0 and 9 (Berg *et al.*, 2002; Hornak, 1997). For example, when using the water-soluble derivative of tetramethylsilane (TMS) as the standard compound, the chemical shift of a CH_3 proton usually exhibits a chemical shift of 1ppm compared to that of an aromatic proton which is typically 7ppm (Berg *et al.*, 2002). The manner in which chemical shifts are calculated allows for NMR spectra, obtained using spectrometers at differing field strengths, to be compared (Hornak, 1997). Fig. 1 provides an example of a one-dimensional NMR spectrum of Galactose penta-acetate ($\text{C}_{16}\text{H}_{22}\text{O}_{11}$) with chemical shifts for the hydrogens clearly resolved. Nuclei experiencing the same chemical shift are referred to as equivalent, while those experiencing different environments or having different chemical shifts are considered nonequivalent (Hornak, 1997). Nuclei which are close to one another have an influence on each other's magnetic field; this effect, referred to as J coupling, is observable in the NMR spectrum when the nuclei are nonequivalent and their distance is less than or equal to three bond lengths (Hornak, 1997).

Utilizing the one-dimensional NMR technique, it is possible to resolve most protons for a few proteins; using the obtained information, we may then deduce changes to a particular chemical group under different conditions (Berg *et al.*, 2002). However, in instances where one-dimensional NMR spectra are far too complex for interpretation due to the overlapping of signals (refer to Fig. 2), the introduction of additional spectral dimensions is not only helpful but necessary for resolving individual resonances in larger proteins.

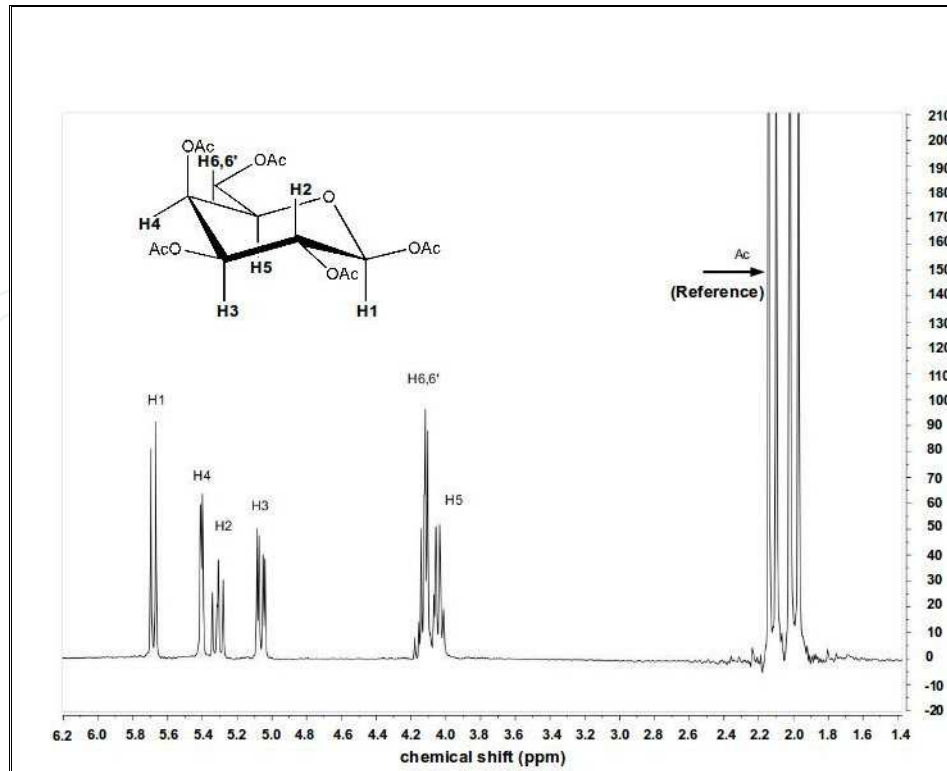


Fig. 1. Example of a one-dimensional NMR spectrum of Galactose penta-acetate with clearly resolved hydrogens. [Figure courtesy of John Glushka, Complex Carbohydrate Research Center, The University of Georgia.]

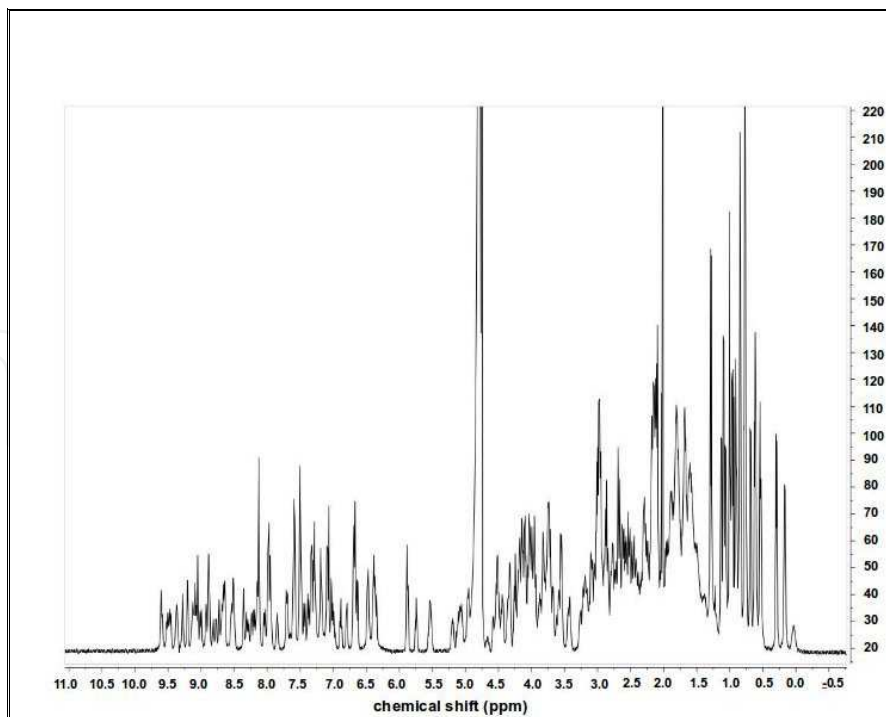


Fig. 2. Example of a one-dimensional NMR spectrum of a small protein (Rubredoxin) with overlapping proton resonances. [Figure courtesy of John Glushka, Complex Carbohydrate Research Center, The University of Georgia.]

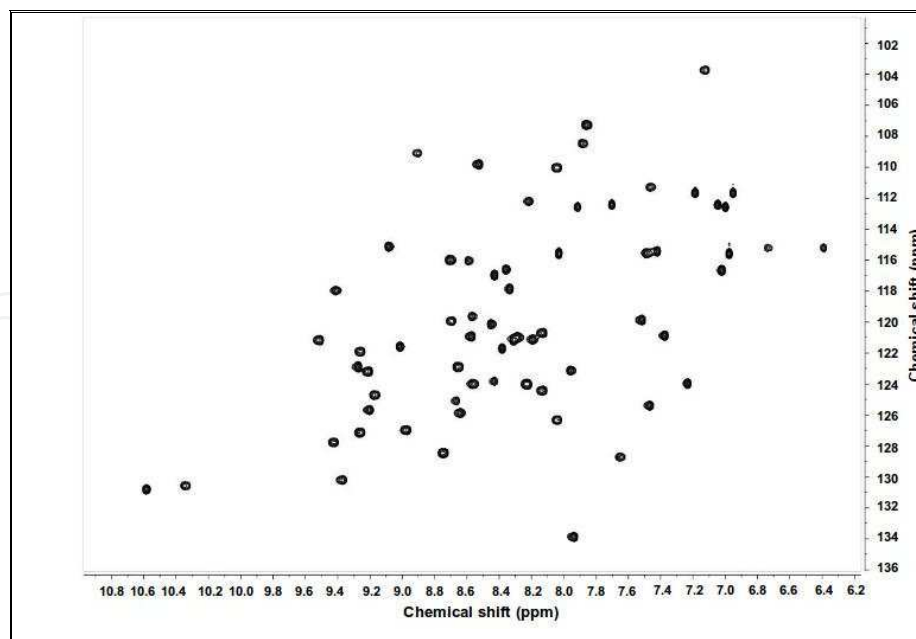


Fig. 3. Example of a two-dimensional HSQC spectrum of protein G. [Figure courtesy of John Glushka, Complex Carbohydrate Research Center, The University of Georgia.]

In order to analyze NMR data, it is important to establish which chemical shift corresponds to which atom. This task is often referred to as resonance assignment, and is dependent upon the protein being isotopically labeled. Standard methods usually begin with two-dimensional ^1H - ^{15}N Heteronuclear Single Quantum Coherence (2D HSQC) experiments, serving as the initial reference spectrum for signal identification (Markley *et al.*, 2003). In this experiment, magnetization is transferred from the Hydrogen attached to ^{15}N via J coupling; the chemical shift is then evolved on the Nitrogen with the magnetization being transferred back to the Hydrogen for detection (Cavanagh *et al.*, 1995). This particular experiment, illustrated in Fig. 3, reveals all ^1H - ^{15}N correlations, which are mainly backbone amide groups (Cavanagh *et al.*, 1995). From this experiment, one can determine whether other experiments would be useful before spending the time and resources required for their implementation. In cases where significant degeneracy is present in the 2D HSQC, three-dimensional spectrum (such as HNCO or HNCA) may prove useful in resolving spin systems which overlap (Markley *et al.*, 2003). The HNCO experiment can be used to predict secondary structure, and does so by correlating the amide ^1H and ^{15}N chemical shifts of one residue with the ^{13}CO chemical shift of the preceding residue (Grzesiek & Bax, 1993; Kay *et al.*, 1990; Muhandiram & Kay, 1994). Here, magnetization is passed from ^1H to ^{15}N and to the ^{13}C by way of the ^{15}N - ^{13}CO J coupling and then passed back via ^{15}N to ^1H for detection (refer to Fig. 4a); the chemical shift is evolved on all 3 nuclei which results in a three-dimensional spectrum (Grzesiek & Bax, 1993; Kay *et al.*, 1990; Muhandiram & Kay, 1994). HNCA, on the other hand, correlates the intraresidue $^{13}\text{C}_\alpha$ chemical shift with the amide ^1H and ^{15}N shifts (Farmer *et al.*, 1992; Grzesiek & Bax, 1993; Kay *et al.*, 1990). For this particular experiment, magnetization is passed from ^1H to ^{15}N and to $^{13}\text{C}_\alpha$ via the ^{15}N - $^{13}\text{C}_\alpha$ J coupling and then passed back to the ^{15}N and ^1H hydrogen for detection as demonstrated in Fig. 4b (Farmer *et al.*, 1992; Grzesiek & Bax, 1993; Kay *et al.*, 1990). In addition, this experiment provides sequential connectivities by transferring the magnetic coherence from ^{15}N to $^{13}\text{C}_\alpha$ of the previous amino acid (Cavanagh *et al.*, 1995). Because the amide Nitrogen is coupled to

both the C_{α} of its own residue and that of the preceding residue, peaks for both C_{α} 's will be visible in the spectrum; peaks with a greater intensity, usually correspond to the C_{α} 's that are directly bonded to the amide Nitrogen (Farmer *et al.*, 1992; Grzesiek & Bax, 1993; Kay *et al.*, 1990). The chemical shift is then evolved for ^1H , ^{15}N and $^{13}\text{C}_{\alpha}$, resulting in a 3-dimensional spectrum (Farmer *et al.*, 1992; Grzesiek & Bax, 1993; Kay *et al.*, 1990).

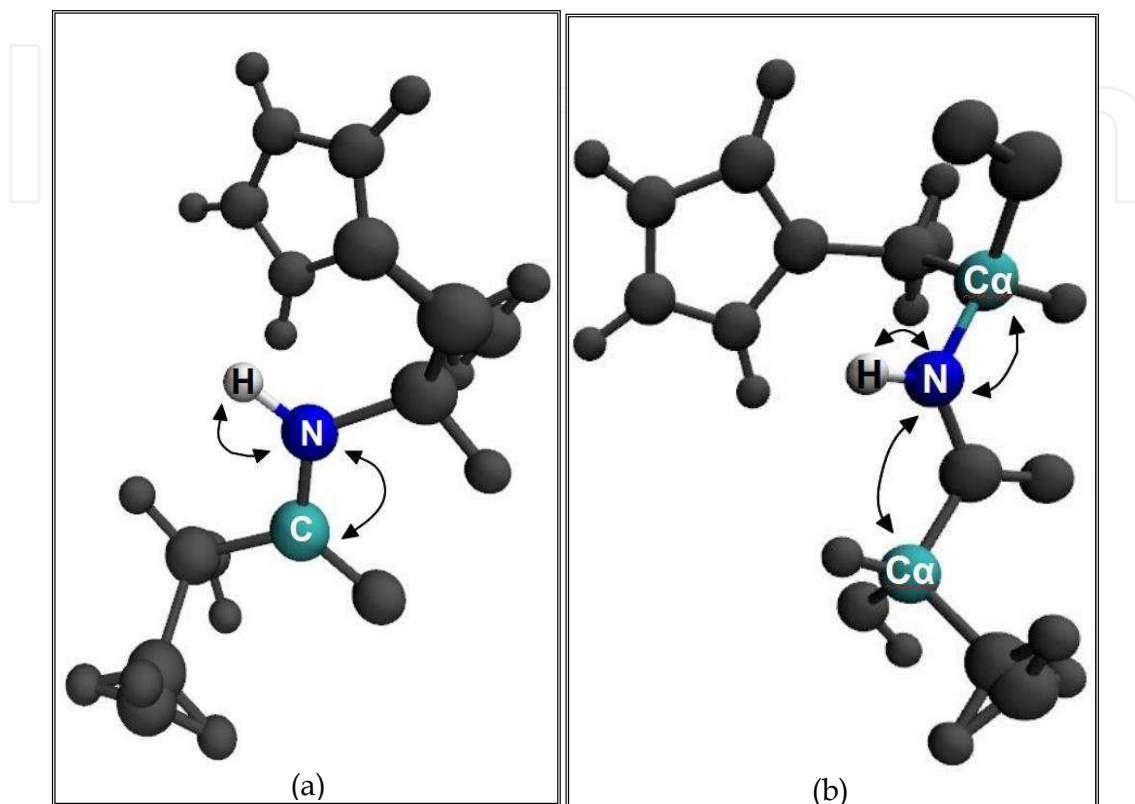


Fig. 4. Visualization of magnetization transfer in the Triple-resonance HNCO (a) and HNCA (b) experiments.

4. A brief discussion of Nuclear Overhauser Effect (NOE) and its implication in modern NMR spectroscopy

Even more structural information can be acquired by examining how the spins of different protons affect neighboring protons (Berg *et al.*, 2002). This is possible through the Nuclear Overhauser Effect (NOE) observed by NMR spectroscopy, which states that an interaction between nuclei is proportional to the inverse sixth power of the distance between them (Berg *et al.*, 2002). Therefore, the distance between nuclei is determined according to the intensity of the peak. By inducing a transient magnetization in a sample through radio-frequency pulse, it is possible to both alter the spin of one nucleus and examine the effect on the spin of a neighboring nucleus (Berg *et al.*, 2002). NOE differs from J coupling in that it identifies pairs of protons that are within close proximity relative to the protein's three-dimensional structure, even if they are not close together with regard to the primary sequence (Berg *et al.*, 2002). J coupling, on the other hand, is only observed when atoms are connected by 2 to 3 covalent bonds, as mentioned in section three. The two-dimensional spectrum acquired by Nuclear Overhauser Enhancement Spectroscopy (NOESY)

graphically displays pairs of protons that are close in proximity within the three-dimensional structure of the protein (Berg *et al.*, 2002). As long as nuclei are within $\sim 5\text{\AA}$, the magnetization from an excited nucleus is transferred to that of an unexcited nucleus (Berg *et al.*, 2002). Fig. 5 provides an example of a one-dimensional NOESY spectrum. The diagonal corresponds to a one-dimensional spectrum, whereas the off-diagonal peaks identify the pairs of protons that are within 5\AA of each other (Fig. 5). Similarly, in a two-dimensional NOESY spectrum, off-diagonal peaks reveal short proton-proton distances (refer to Fig. 6).

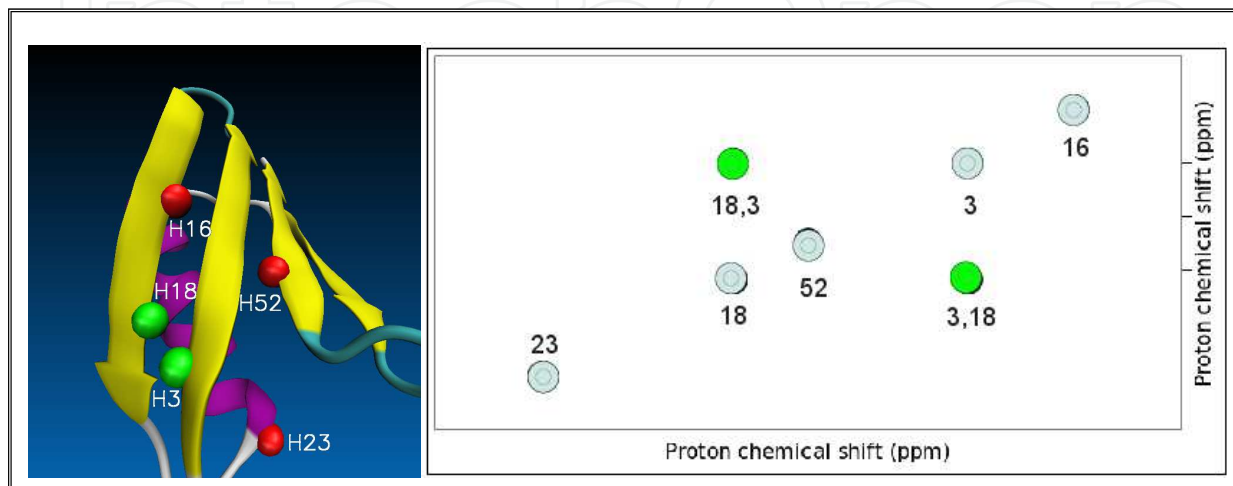


Fig. 5. Example of a one-dimensional NOESY spectrum. The five diagonal peaks correspond to the five protons in the image to the left. The peaks above the diagonal and the symmetrically related one below reveal that proton H18 is close to proton H3.

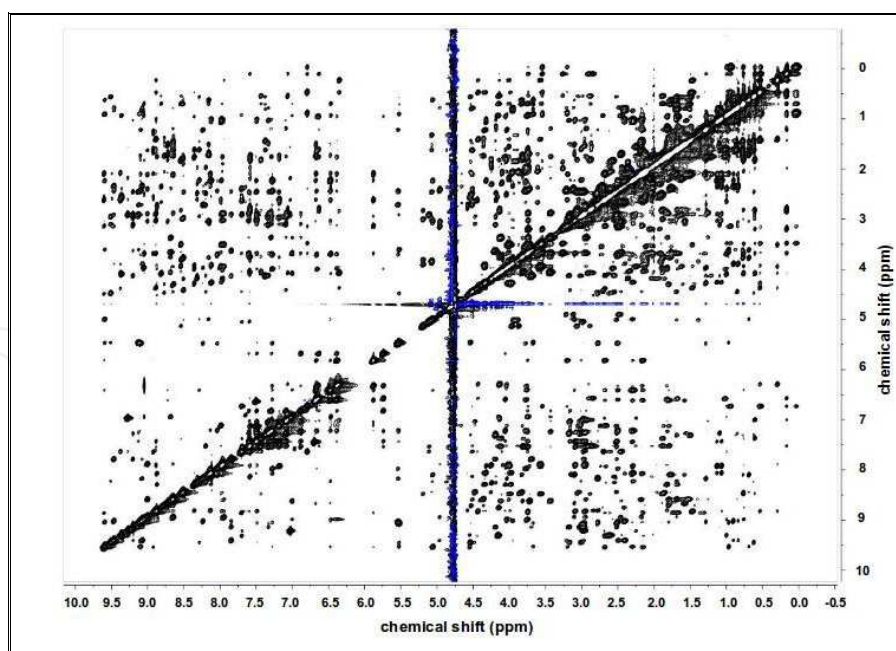


Fig. 6. Example of a two-dimensional NOESY spectrum of the Rubredoxin protein. Each off-diagonal peak corresponds to a short proton-proton separation. This spectrum reveals hundreds of such short proton-proton distances, which can be used to determine the three-dimensional structure of this protein. [Figure courtesy of John Glushka, Complex Carbohydrate Research Center, The University of Georgia.]

Three-dimensional protein structures may be calculated nearly uniquely if a sufficient number of distance constraints are applied, and are reconstructed such that proton pairs identified from NOESY spectra are close to one another in the three-dimensional structure (Berg *et al.*, 2002). Families of related structures may also be generated in cases where: not enough constraints are experimentally accessible to fully describe the structure; distances obtained from NOESY analysis are only approximate; as opposed to utilizing a single molecule, experimental observations are made on a number of molecules in solution which may have slightly different structures at any given moment (Berg *et al.*, 2002). It is important to note that the efficient and accurate assignment of NOEs for structure determination is highly dependent upon the completeness and precision of the chemical shift assignments (Markley *et al.*, 2003).

5. NMR approaches for the study of internal dynamics

The investigation of protein dynamics relies mostly upon the use of NMR techniques. This is due to the fact that biological functions span a range of timescales for which various NMR experiments are sensitive. Here we briefly introduce a number of NMR methods, and summarize for each the timescales for which they are capable of acquiring experimental data (refer to Fig. 7).

Time	fs	ps	ns	μ s	ms	s
(seconds)	(10^{-15})	(10^{-12})	(10^{-9})	(10^{-6})	(10^{-3})	(1)
Local Structural Change	Bond vibration	Sidechain rotation	Loop motion	Molecular tumbling	Domain motion	
Significance	Chemistry	Entropy calculation		Enzyme catalysis, ligand binding, allostery		
NMR Method		NSR		RDC	RF RD	CPMG RD
NMR Parameter		NOE		PRE	Lineshape	
		J-coupling				
		Chemical shift				
						RT NMR
						EXSY

Fig. 7. Timescale of protein dynamic events, and the appropriate experimental methods that can be used to detect them. Acronyms for NMR methods: RDC – Residual Dipolar Coupling; RT NMR - Real Time NMR; NSR – Nuclear Spin Relaxation; RF RD – Rotating Frame Relaxation Dispersion; CPMG RD – Carr-Purcell Meiboom-Gill Relaxation Dispersion; EXSY – Exchange Spectroscopy; and PRE – Paramagnetic Relaxation Enhancement.

Real-Time NMR (RT NMR) – encompasses slower dynamic processes in the seconds range (Kleckner & Foster, 2011) and was originally developed as a method to follow protein folding, combining the availability of high resolution data with kinetics experiments to allow for detailed examination of protein structure during different steps of the folding process (Zeeb & Balbach, 2004). The experiment consists of physically initiating a process of interest and subsequently acquiring a sequence of NMR spectra, which typically demonstrate a progressive weakening of an initial set of signals along with a gradual

strengthening of a new set of signals – the result of time-dependent changes from differing conformations and or local structures (Kleckner & Foster, 2011).

EXchange SpectroscopY (EXSY) – is used to quantify exchange kinetics for dynamic processes in the 10 millisecond to 5 second timescale (Kleckner & Foster, 2011) and encompasses slow conformational changes such as domain movements (Key *et al.*, 2009) and ligand binding (Demers & Mittermaier, 2009). In this experiment, kinetic information is obtained from a quantitative analysis of the magnetization transfer and spectral broadening that results from the exchange between bound and free states in a partially ligand-saturated sample (Demers & Mittermaier, 2009).

Lineshape Analysis – is another approach reporting exchange events that take place roughly between 10 milliseconds and 0.1 seconds (Kleckner & Foster, 2011). In this experiment, chemical exchange processes are identified by characteristic changes of the NMR line shape (Jeener *et al.*, 1979), which are typically the result of spectra acquired along a titration coordinate (in the form of ligand concentration, temperature or pH for example) allowing for the observation of their incremental effect upon the NMR observables (Kleckner & Foster, 2011).

Carr-Purcell Meiboom-Gill Relaxation Dispersion (CPMG RD) – is a technique used to obtain kinetic, thermodynamic, and structural information and applies to exchange processes occurring in the 0.3 to 10 millisecond time frame (Kleckner & Foster, 2011; Loria *et al.*, 2008). The purpose of this particular experiment is to use a series of spin echo pulses to transverse magnetization during a relaxation delay in order to refocus exchange broadening (Kleckner & Foster, 2011).

Rotating Frame Relaxation Dispersion (RF RD) – may be used to study exchange processes that occur within the 20 to 100 microsecond range (Kleckner & Foster, 2011; Loria *et al.*, 2008). This particular experiment is very similar to that of CPMG, the only difference is in the range of the spin echo pulses used (25-1200 Hz for CPMG and 1-50kHz for RFRD), this allows RF RD to study exchange events via the same principles as CPMG, but on a faster timescale (Kleckner & Foster, 2011).

Paramagnetic Relaxation Enhancement (PRE) – is a method which allows for the study of protein dynamics within the microsecond timescale and is most appropriate for the examination of non-specific interactions and complexes between binding partners (Clore & Iwahara, 2009; Kleckner & Foster, 2011). This approach results from the identification of the magnetic dipole interaction between a nucleus and an unpaired electron (Kleckner & Foster, 2011).

Nuclear Spin Relaxation (NSR) – may be used to study the details of protein dynamics on fast timescales (picoseconds to nanoseconds) and is made possible by the presence of NMR probes throughout the molecule (Case, 2001). This experiment is based on the weak coupling between spin variables and molecular motion which are then manifested into much slower relaxation of the spins which can be readily studied (Case, 2001).

Full characterization of inter-molecular dynamics has been limited to NMR spectroscopic study of the protein (or complex of proteins) of interest and are typically performed in separate steps – with the protein's structure determined first under the assumption of

rigidity, and its motion characterized later. Although structure determination protocols based on the assumption of molecular rigidity will produce a single structure, the degree of similarity between the static model of a protein structure and the many conformations of the dynamic model is not always clear and is poorly investigated. Another source of data capable of studying both structure and dynamics on timescales ranging from picoseconds to microseconds is that of Residual Dipolar Couplings or RDCs, which we discuss in further detail in the section that follows.

6. Emerging methods in simultaneous study of structure and dynamics of proteins

Recent advances in NMR spectroscopy have enabled the acquisition and analysis of data other than the traditional distance constraints. These new sources of data include Residual Dipolar Couplings (RDC), Pseudo Contact Shifts (PCS), and Paramagnetic Relaxation Enhancement (PRE), which provide orientational restraints as well as distance restraints. The introduction of orientational restraints has produced a shift in paradigm of structure determination that has necessitated alternative approaches to the analysis of NMR data. In this section the utility of orientational restraints has been discussed with references to the software development track that has been the subject of additional investigations. Finally, the focus of this section will be aimed at RDC data.

Historically, the use of RDCs has been limited by two factors: data acquisition, and data analysis. The introduction of a variety of alignment media, combined with advances in instrumentation and data acquisition have mitigated the experimental limitations in obtaining RDCs. The major bottleneck in utilization of RDC data in recent years has been attributed to a lack of powerful and yet user-friendly RDC analysis tools capable of extracting the pertinent information embedded within this complex source of data.

6.1 Residual Dipolar Couplings (RDCs)

Residual dipolar couplings (RDCs) have been observed as early as 1963 (Saupe & Englert, 1963) in nematic environments. A number of recent applications (Al-Hashimi & Patel, 2002; Bax *et al.*, 2001; Blackledge, 2005; de Alba & Tjandra, 2002; Prestegard *et al.*, 2000; Tolman, 2001; Zhou *et al.*, 1999) have reignited their wide use in application to a broad spectrum of biomolecules. RDCs arise from the interaction of two magnetically active nuclei in the presence of the external magnetic field of an NMR instrument (Bax *et al.*, 2001; Prestegard *et al.*, 2000; Tjandra *et al.*, 1996; Tolman *et al.*, 1995). This interaction is normally reduced to zero, due to the isotropic tumbling of molecules in their aqueous environment. The introduction of partial order to the molecular alignment, by minutely limiting their isotropic tumbling, will resurrect the RDC observable. This partial order can be introduced by either magnetic anisotropy of the molecule (Prestegard *et al.*, 2000), a crystalline aqueous solution (Prestegard & Kishore, 2001), or incorporation of artificial tags with magnetic anisotropy susceptibility such as Lanthanide (Nitz *et al.*, 2004). RDCs are measured relatively easily and represent an abundant source of highly precise information, such as the relative orientations of different inter-nuclear vectors within a molecule. Equation 1 describes the time average observable of the RDC interaction between a pair of spin $\frac{1}{2}$ nuclei.

$$D_{ij} = \frac{-\mu_0 \gamma_i \gamma_j h}{(2\pi r)^3} \left\langle \frac{3\cos^2(\theta_{ij}(t)) - 1}{2} \right\rangle \quad (1)$$

Here, D_{ij} denotes the residual dipolar coupling in units of Hz between nuclei i and j , γ_i and γ_j are nuclear gyromagnetic ratios of the two interacting nuclei, r is the internuclear distance (assumed fixed for directly bonded atoms) and $\theta_{ij}(t)$ is the time dependent angle of the internuclear vector with respect to the external magnetic field. The angle brackets signify the time average of the quantity.

Residual dipolar couplings serve as an abundant source of orientational information for the inter-nuclear vectors within a molecule (Bax *et al.*, 2001; Prestegard *et al.*, 2000; Tolman *et al.*, 1995). They may also be acquired very rapidly and accurately by a number of techniques including, direct measurement of splittings in coupled heteronuclear single quantum coherence spectra (HSQC) (Bax *et al.*, 1994; Bodenhausen & Ruben, 1980; Cavanagh *et al.*, 1995; Tolman & Prestegard, 1996). RDCs provide structural (Bax *et al.*, 2001; Cornilescu *et al.*, 1999; Delaglio *et al.*, 2000) and motional (Al-Hashimi *et al.*, 2002b; Bax, 2003; Bernardo & Blackledge, 2004a, 2004b; Blackledge, 2005; Clore & Schwieters, 2003; O'Neil-Cabello *et al.*, 2004; Tolman, 2001; Yi *et al.*, 2004) information in a biologically relevant timescale and have been used in studies of carbohydrates (Adeyeye *et al.*, 2003; Azurmendi & Bush, 2002; Azurmendi *et al.*, 2002; Tian *et al.*, 2001a), nucleic acids (Al-Hashimi *et al.*, 2000a, 2002a, 2002b; Tjandra *et al.*, 2000; Vermeulen *et al.*, 2000) and proteins (Andrec *et al.*, 2001; Assfalg *et al.*, 2003; Bertini *et al.*, 2003; Clore & Bewley, 2002; Cornilescu *et al.*, 1999; Fowler *et al.*, 2000; Tian *et al.*, 2001b). The use of RDCs as the main source of structural information has led to a significant reduction in data collection and analysis, while providing the possibility of simultaneous resonance assignment, structure determination, and identification of dynamical regions (Bernardo & Blackledge, 2004b; Prestegard *et al.*, 2005; Shealy *et al.*, 2011; Tian *et al.*, 2001b; Valafar *et al.*, 2005). As a result, the impact of these developments has enabled direct investigation of protein backbone structures (Bernardo & Blackledge, 2004b; Clore *et al.*, 1999; Fowler *et al.*, 2000; Tian *et al.*, 2001b; Valafar *et al.*, 2005). Applications of RDCs have also extended into the structural elucidation of traditionally complex proteins such as membrane proteins (Opella & Marassi, 2004; Park *et al.*, 2009) and homo-multimeric proteins (Wang *et al.*, 2008). In fact, the utility of RDCs has extended well beyond the community of NMR spectroscopists. In several instances, RDCs have been used to validate and refine X-ray protein structures (Bansal *et al.*, 2008; Langmead & Donald, 2003; Valafar & Prestegard, 2003, 2004) as well as modeled protein structures (Bansal *et al.*, 2008; Raman *et al.*, 2010a; Rohl & Baker, 2002; Valafar & Prestegard, 2003, 2004).

6.2 Molecular frame, alignment frame and order tensor

Proper understanding and interpretation of the Order Tensor Matrix (OTM) is central to the study of structure and dynamics of biological macromolecules from orientational restraints, and therefore requires a brief discussion. Upon successful determination of a structure, its atomic coordinates are described within some arbitrarily selected coordinate system. Since this structure is independent of any rotation or displacement within a given frame, the selection of a coordinate system is inconsequential. This arbitrary coordinate system is

denoted as the “molecular frame” (*MF*). On the other hand, since RDC data are capable of describing the preferred alignment of a molecule, a more descriptive frame can be selected in which the atomic coordinates of the molecule of interest are described in the appropriate orientation. This more descriptive frame is defined as the “principal alignment frame” (*PAF*). Rotation of the molecule within this frame is consequential in the representation of its order tensor while any translation in space is not. Alignment properties of a molecule can be described in the form of a Saupe order tensor matrix (Saupe & Englert, 1963; Valafar & Prestegard, 2004). Reformulation of Equation 1 in the matrix form collects and defines the Saupe order tensor matrix (or *OTM* for short) as represented by *S* in Equation 2. The entity *v* in this equation, represents the Cartesian coordinates of the normalized vector, and describes the relationship between a pair of interacting nuclei. Jacobi transformation (Press *et al.*, 2002) of this symmetric and traceless matrix can separate two important information contents of the molecular alignment as shown in Equation 3. In this equation, a 3×3 order tensor represented by the elements *s_{ij}* can be decomposed to produce the diagonal form of the order tensor matrix and a corresponding rotation matrix denoted by *R*. The three elements of the resulting diagonal matrix (*S_{xx}*, *S_{yy}* and *S_{zz}* also referred to as the order parameters) represent the strength of alignment along each of the principal axes *x*, *y* and *z* within the *PAF*. Comparison of the order parameters obtained from different regions of a macromolecular complex can provide information regarding their rigidity with respect to each other. Analysis of the *R* matrix in turn can provide the preferred direction of orientation with reference to the starting molecular frame. The preferred alignment can be identified through the decomposition of the rotation matrix *R* (shown in Equation 3) into three distinct rotational operators along *z*, *y* and *z* axes of the *PAF*. These three rotations denoted by *α*, *β*, and *γ* fully define the orientational relationship between the arbitrary *MF* and the *PAF*, and can be used to assemble molecular complexes. In summary, an order tensor encapsulates five independent pieces of information (*α*, *β*, *γ*, *S_{yy}*, *S_{zz}* and *S_{xx} = -S_{yy} - S_{zz}*). Careful study of the order tensor matrix can provide the preferred alignment of the molecule with respect to the molecular frame (*α*, *β*, *γ*) and strength of alignment (*S_{yy}*, *S_{zz}*) along each of the principal axes of alignment within the *PAF*. When RDC data are assigned to specific locations in a given structure, the elements of the order tensor can be obtained (Blackledge, 2005; Clore *et al.*, 1998; Dosset *et al.*, 2001; Losonczi *et al.*, 1999; Valafar & Prestegard, 2004). Equally as well, given a structure and the elements of the order tensor, theoretical RDC data can be calculated easily.

$$D = - \left(\frac{\mu_0 \gamma_i \gamma_j h}{(2\pi r)^3} \right) v' \cdot S \cdot v \quad (2)$$

$$S = \begin{bmatrix} s_{xx} & s_{xy} & s_{xz} \\ s_{xy} & s_{yy} & s_{yz} \\ s_{xz} & s_{yz} & s_{zz} \end{bmatrix} = R(\alpha, \beta, \gamma) \cdot \begin{bmatrix} S_{xx} & 0 & 0 \\ 0 & S_{yy} & 0 \\ 0 & 0 & S_{zz} \end{bmatrix} \cdot R(\alpha, \beta, \gamma)^T \quad (3)$$

The attainment of an order tensor is an important requisite step in extracting structural information from RDC data.

6.3 Structure determination by RDCs

Structure determination approaches from RDC data utilize the rotational component of order tensor matrices in order to assemble a protein from rigid structural elements. The rigid structural elements can consist of units as small as peptide planes (Bernado & Blackledge, 2004a; Bryson *et al.*, 2008) or as large as individual structural domains (Delaglio *et al.*, 2000; Fowler *et al.*, 2000). Nearly all of the existing NMR data analysis packages such as Xplor-NIH (Schwieters *et al.*, 2003), and CNS (Brunger, 2007) have been modified to incorporate orientational restraints as part of their analysis. However, this shift in paradigm from distance-based to orientation-based structure determination, has necessitated the development of appropriate analyses. A number of such software packages have been introduced in recent years such as REDCAT (Valafar & Prestegard, 2004), REDCRAFT (Bryson *et al.*, 2008) and others (Delaglio *et al.*, 2000; Fowler *et al.*, 2000).

The prospect of structure determination of macromolecules from orientational restraints has many advantages. First, a carefully selected set of RDC data originating from the backbone of a protein can be used to directly investigate structural parameters such as the backbone torsion angles. For example, backbone N-H and C_α-H_α RDCs can be used to directly restrain the backbone structure of a protein (Bryson *et al.*, 2008; Marassi & Opella, 2002, 2003; Prestegard *et al.*, 2005; Tian *et al.*, 2001b; Tjandra *et al.*, 1997; Valafar *et al.*, 2005; Wang & Donald, 2004). However, in order to address degeneracies (Al-Hashimi *et al.*, 2000b) and variable sensitivity of RDC data (Bryson *et al.*, 2008), it is necessary to acquire orientational restraints from two or more independent alignment media. Therefore it can be argued that in theory, the structure of any protein can be determined with as little as two RDC data per residue from two alignment media. The main reason for this reduction in the data requirement is based on independent investigation of backbone structure from investigation of the side chains. This significant reduction in the amount of required data is of paramount importance in reducing the cost (temporal and financial) of structure determination, and extending the applicability of NMR spectroscopy to challenging proteins such as membrane proteins. Nearly 30% of the human proteome is predicted to consist of membrane proteins. Despite their functional importance and frequency of occurrence, only ~100 unique membrane proteins have been structurally characterized and included in the PDB database (Berman *et al.*, 2000). Their low level of inclusion is because they neither crystallize for X-ray crystallography nor produce the conventional NOE data (12-15 NOEs per residue) through NMR spectroscopy that has been required for successful structure determination. On the other hand, acquisition of two or three RDC data per residue for membrane proteins or large deuterated proteins is feasible with today's technology. Furthermore, because of the direct relationship between the RDC data and backbone conformation of proteins, it is easy to theoretically support the sufficiency of two or three RDC data points per residue for meaningful structure determination.

6.4 Simultaneous study of structure and dynamics

Study of internal dynamics of macromolecules has been one of the long standing challenges in structural and molecular biology. While the importance of elucidating the structure of pharmaceutical targeted proteins is widely accepted, the importance of understanding their associated internal dynamics is less widely recognized. This neglect is due, in part, to a lack of experimental methods capable of probing dynamics on biologically relevant timescales. Although, various techniques for the study of internal dynamics exist (Henzler-Wildman &

Kern, 2007), they usually apply to faster timescales or provide little information regarding conformational changes for slower dynamics.

Traditionally, full characterization of inter-molecular dynamics by NMR spectroscopy is separated from structure elucidation, increasing the cost of these studies. Furthermore, conceptually, it is difficult to separate structure from dynamics since the two are intimately related and any attempt in structure elucidation that disregards the dynamics (or vice versa) can produce faulty results. A structure that has been determined from data perturbed by internal dynamics, is likely to produce a compromised structure. Relying on a false structure to study internal dynamics is likely to produce an inaccurate model of the internal motion. Disregarding internal dynamics during the course of structure determination may have catastrophic effects. Fig. 8 demonstrates the effects of structure determination of a mobile terminal helix while disregarding internal dynamics (Bryson *et al.*, 2008). Although the entire helix maintains its secondary structure, the recovered structure from traditional methods does not bear any resemblance to the actual structure (Fig. 8 green).

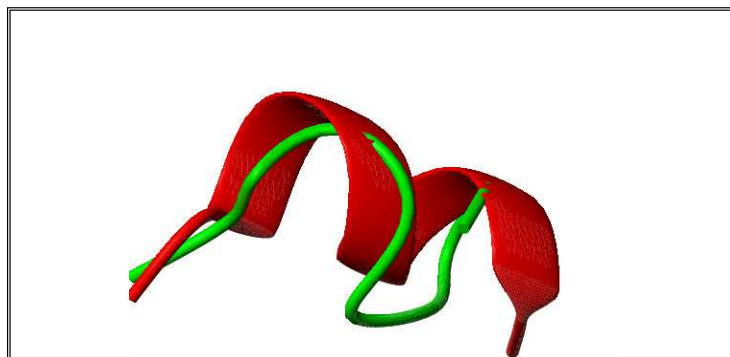


Fig. 8. The structure of a mobile terminal helix (red) that has been determined by conventional approaches (green).

As discussed in section 6.3, proper analysis of RDC data can reveal information regarding the relative stability of various internal regions of a protein. This information can be obtained by comparing the order parameters that are obtained independently from each suspect region. Similar order parameters reported from different regions of a protein imply internal rigidity, while dissimilar order parameters can be interpreted as presence of internal dynamics. In this regard, RDCs prove to be exceptional probes for the inspection of dynamics in biomolecules on timescales that are biologically relevant (Bouvignies *et al.*, 2005). Therefore proper investigation of structure and dynamics of proteins from RDC data should theoretically be possible. However, proper treatment of RDCs requires analysis software packages that are specifically designed for this purpose. Study of structure and dynamics of RDCs with traditional software packages such as Xplor-NIH (Schwieters *et al.*, 2003) or CNS (Brunger, 2007) can be very daunting. Here we utilize the membrane bound form of the bacteriophage Pf1 protein (mbPf1) to illustrate the point. The structure of the mbPf1 protein consists of two helices, a longer transmembrane helix and a short amphipathic helix. A two-state jump model of motion has been applied to the amphipathic helix of this protein. Appropriate averaged RDC data have been generated to reflect the effect of the modeled internal dynamics. Fig. 9 provides an illustration of the two states of the amphipathic helix in red and green. An attempt to recover the structure of this protein from RDC data after insisting on helical secondary structural elements and using

conventional analysis methods, produces the ensemble of structures shown in cyan in Fig. 9a. A recently introduced RDC analysis method named REDCRAFT, has demonstrated the possibility of successful study of structure and dynamics of proteins. Application of REDCRAFT analysis to the two-state jump problem successfully recovers the structure and orientation of the two states as shown in Fig. 9b in cyan. Note that the reconstructed states in Fig. 9b exhibit less than 1.3Å bb-rmsd.

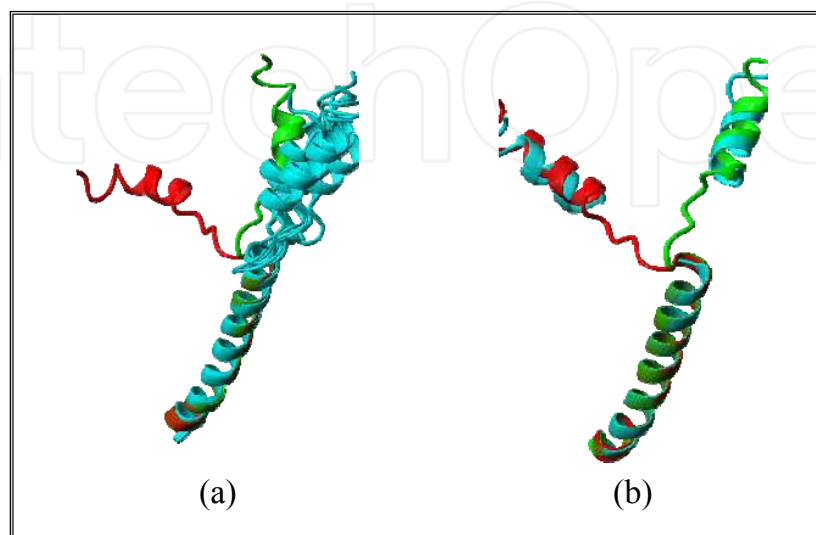


Fig. 9. Structure of the membrane bound form of the bacteriophage coat protein pf1 with a hypothetical and simulated model of dynamics. The two states of the amphipathic helix are illustrated in red and green. Attempts to recover the structure of this protein from RDC data using conventional analysis methods produces an ensemble of cyan structures (a) while REDCRAFT successfully recovers the structure and orientation of the two states in cyan (b).

7. A comparison of NOE versus RDC based approaches to study structure and dynamics of proteins

Over the past few years, the utility of residual dipolar couplings (RDCs) for structure determination has increased precipitously. This explosion can be attributed to its distinct advantages over the traditional distance constraints (Bryson *et al.*, 2008; Prestegard *et al.*, 2005, 2001; Valafar *et al.*, 2005). Generally, RDC data are more precise, easier to measure, and are capable of providing informative structural and dynamic information. The direct relationship between a carefully selected set of RDC data and structural parameters, such as backbone torsion angles, is another notable advantage of RDC data over NOE data. Given the alignment of an unknown protein, a single RDC datum can limit the orientation of the corresponding vector to within two symmetrical cones as illustrated by Tjandra and Bax (Tjandra & Bax, 1997; Tjandra *et al.*, 1996, 1997). In addition, the number of NOE requirements for an unambiguous recovery of a structure is heavily related to structural complexity of the protein, which is unknown *a priori* to structure determination. Fig. 10 illustrates the tertiary structure of two proteins (3LAY and 1A1Z) of similar sizes, which clearly require disparate amounts of NOE data for successful description of their structures. Even the assembly of their secondary structural elements will require a different number of distance constraints. The lack of an understanding, as to the amount of data that is required, will have a direct impact on the cost and success of protein structure characterization. RDC

data, on the other hand, are more suitable for theoretically understanding data-requirements, independent of structural complexity. As mentioned previously, strategically collected data can directly constrain a related torsion angle. Therefore, it is of no surprise that 2-3 RDC data points per residue should suffice for successful determination of a protein's backbone structure, regardless of the structural complexity. *A priori* knowledge of data requirements is helpful for many reasons. Proper understanding of data requirements allows establishing the completeness of the acquired data prior to analysis.

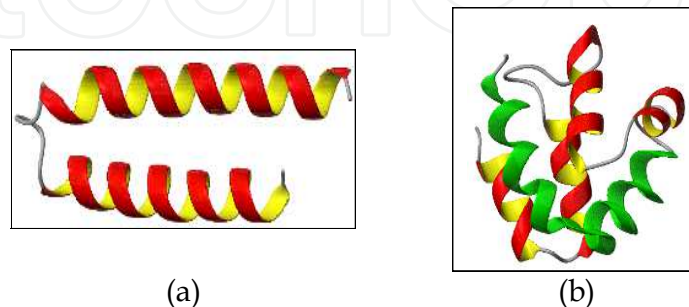


Fig. 10. Two helical proteins 3LAY (a) and 1A1Z (b) of nearly the same size and different structural complexity.

Another advantage in using RDCs is that the collected data from one portion of a structure, can act as a constraint on any other part of the structure, since all measurements are made with respect to a global point of reference (the common order tensor of the molecule). RDC data collected from the N-terminus of a protein must report the same order tensor as that described by the C-terminus of that protein. This underlying, global relationship between all RDCs significantly enhances their efficacy as global structural constraints. Furthermore, any discrepancy in the assumption regarding the rigidity of a protein can at least be evaluated. This is not the case with NOE data. For example, referring to Fig. 10, once the helical fragments are folded with the measured short-range NOEs, they do not infer any structural restraints for other parts of the molecule.

Piecewise structure determination from NOE data is not always possible, and is often very unlikely, since NOE interactions are normally observed between two atoms that may be anywhere along the backbone of a protein. Therefore, the structure of the entire protein, including that of the side chains, needs to be addressed simultaneously. Simultaneous investigation of the entire protein leads to an exponentially expanding search space that is riddled with many local minima. Although simulated annealing approaches can in theory resolve entrapment in local minima, in practice this requires a large number of redundant structure determination sessions in the hopes of discovering a more suitable structure. The use of RDCs enables the construction of a protein's backbone structure incrementally, through the addition of one amino acid at a time. This progressive strategy is computationally more convenient and allows the direct investigation of the backbone with reduced risk of entrapment in local minima. Addition of the side chains can take place after structure determination of the backbone, thereby benefiting from significant reduction in complexity of the solution-space.

Fig. 11 provides direct evidence of the functional importance of RDC data in high-resolution structure determination. Here we have utilized the solution state structure of Ubiquitin/UIM fusion protein (2KDI) to generate precise NOE and RDC (backbone N-H and C_{α} - H_{α}) data using typical order tensors. The computed data were then corrupted through the addition of uniformly distributed noise. The original 2KDI structure was also used to generate 5000 random derivative structures with 0-23Å of deviation, as measured over the backbone atoms with respect to 2KDI. Fig. 11 illustrates the fitness to the simulated data of the 5000 randomly generated structures, versus their backbone deviation (bb-rmsd) from the 2KDI structure. Fitness to the experimental data (RDC in blue and NOE in magenta) is plotted on the vertical axes while bb-rmsd to the high-resolution structure is plotted on the horizontal axis. This figure can be used to ascertain the information content of NOEs versus RDCs in guiding any protein folding strategy. Several conclusions can be made from Fig. 11. First, this figure suggests that backbone N-H and C_{α} - H_{α} RDCs are sufficient enough to obtain a protein structure. Second, Fig. 11 suggests that NOEs tend to plateau (lose sensitivity) as the calculated structure approaches the actual structure, while RDCs become more sensitive. Therefore, NOEs may be indiscriminate probes when operating in the range of 0-3.5Å from the actual structure. In contrast, the use of RDC data may very well provide structures within less than 1.0Å from the actual structure. This observation is in agreement with the community wide consensus that X-ray structures fit RDC data better than the NOE based NMR structure of proteins. The final conclusion is that RDCs may be an indispensable source of data in high-resolution structure determination by NMR spectroscopy.

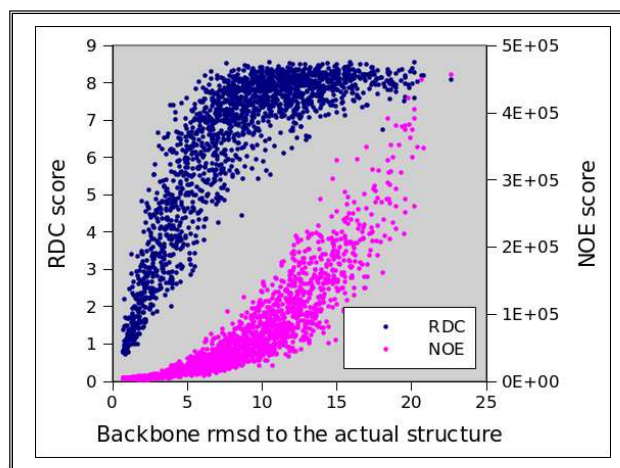


Fig. 11. NOE and RDC fitness of 5000 structures generated randomly from a known structure versus their backbone rmsd to the actual structure.

8. The role of NMR spectroscopy in the era of Computational Biology

Structure determination utilizing traditional NMR techniques, relies on the measurement of Nuclear Overhauser Effects (NOEs) and scalar couplings in order to derive distance and torsion angle constraints, respectively (Montelione *et al.*, 2000). Although NOE constraints will continue to be important for high-throughput structure determination, the measurement of residual dipolar couplings (RDCs) will prove valuable in structure genomics efforts (Montelione *et al.*, 2000). By providing new structural information in qualitative form (Montelione *et al.*, 2000), RDC experiments result in orientational constraints that are complementary to the distance-based constraints available through

NOEs (Prestegard, 1998). Exceptionally challenging proteins, such as membrane bound/associated or glycosylated proteins, are refractory for structure determination by traditional approaches (NMR and X-ray crystallography). This can be attributed to either an insufficient number of the required conventional (distance or NOE) constraints in the case of NMR spectroscopy, or the failure to produce a diffraction-quality crystal for X-ray crystallography. Residual Dipolar Couplings (RDC), are a new type of data that have been anticipated to be instrumental in structural characterization of large proteins, membrane proteins or homo-multimeric protein complexes, to name a few. This is in part due to their rich information content. RDCs also possess the potential for integrating structure determination by NMR spectroscopy (Bryson *et al.*, 2008; Park *et al.*, 2009; Prestegard *et al.*, 2005; Tian *et al.*, 2001b; Valafar *et al.*, 2005), X-ray crystallography (Bansal *et al.*, 2008; Ulmer *et al.*, 2003; Valafar & Prestegard, 2003), and computational modeling (Bansal *et al.*, 2008; Raman *et al.*, 2010b; Valafar & Prestegard, 2003) methods into one unified approach for structural elucidation of biological macromolecules. Because RDCs may be used to characterize the structure and dynamics of challenging proteins, it presents a viable, cost-effective method with the benefit of producing rapid, comprehensive and automated results (Al-Hashimi *et al.*, 2002b; Bailor *et al.*, 2007; Liu *et al.*, 2010; Park *et al.*, 2009; Prestegard *et al.*, 2000; Tian *et al.*, 2001a; Wang *et al.*, 2007).

Another important development to consider, is the automated analysis of NMR data. Many of the interactive tasks related to spectral analysis which are currently performed by experts could, in principle, be performed more efficiently using computational systems (Montelione *et al.*, 2000). This has in fact been demonstrated with proteins ranging from 50 to 200 residues in length (Moseley & Montelione, 1999).

9. Concluding remarks

Here we conclude by summarizing some of the limitations related to modern NMR spectroscopy and briefly describe a method which may help to mitigate the limitations of NMR spectroscopy with respect to large molecules and macromolecular assemblies.

9.1 Limitations of modern NMR spectroscopy

Similar to other methods of structure determination, the accuracy of protein structures determined by NMR are dependent upon the extent and quality of the data that can be obtained (Liu & Hsu, 2005; Montelione *et al.*, 2000). NMR spectroscopy is considered relatively insensitive, typically requiring samples of about 1mM protein concentration; preventing studies of proteins with very low solubilities, thereby limiting certain experimental designs (Montelione *et al.*, 2000). Limitations such as these effect constraints on pulse sequence design and sample stability (Montelione *et al.*, 2000). Although multiple samples may be utilized for the process of structure determination, each sample must be stable (with regard to precipitation, aggregation, and other types of degradation) for any amount of time ranging from days to weeks (Montelione *et al.*, 2000). Furthermore, manual analyses of these multiple NMR datasets are not only laborious and time-consuming, but require expertise (Montelione *et al.*, 2000). Although recent developments hold great promise in reducing the amount of time in structure determination using automated analysis of NMR assignments and 3-dimensional structure (Moseley & Montelione, 1999), general methods for automated analysis of side chain resonance assignment are not yet well developed (Liu & Hsu, 2005; Montelione *et al.*, 2000).

Yet another limitation of NMR analysis is that the density of constraints is occasionally insufficient for accurate structural analysis (Montelione *et al.*, 2000). More specifically, general methods for cross-validation similar to the free R-factor (a statistical measurement used in crystallographic studies for evaluating how well a structure model fits the diffraction data) are not currently available (Montelione *et al.*, 2000). With regard to Residual Dipolar Couplings (RDCs), current limitations include: the efficient identification of alignment media (Montelione *et al.*, 2000), available methods for data extraction and analysis (Jung & Lee, 2004),

The major challenge of NMR spectroscopy, however, is in reducing the amount of time in data collection for structure determination (Liu & Hsu, 2005). The construction of new high-field magnets for enhanced sensitivity, exemplify technological advancements that are of particular interest, yet it is the performance of the NMR probe (used to detect NMR signals) for which the sensitivity of the acquired NMR data depends (Montelione *et al.*, 2000). This can be improved through the introduction of new probes, but is also dependent upon advancements in partial deuteration, which can improve the signal to noise ratios that result from sharper linewidths and longer transverse relaxation times (Gardner & Kay, 1998; Montelione *et al.*, 2000). Transverse Relaxation-Optimized Spectroscopy (TROSY) is another novel technique that may provide significant sensitivity for large proteins by slowly relaxing NMR transitions (Montelione *et al.*, 2000; Pervushin *et al.*, 1997; Wider & Wüthrich, 1999; Wüthrich, 1998). Finally, the proper combination of various sources of data can be very beneficial in overcoming some of the fundamental challenges in NMR spectroscopy. Based on results shown in Fig. 11, it can be concluded that NOE data are much more effective in guiding the protein structure from an extended state to near its native conformation. However, NOE data alone seem to lose structural sensitivity around 3 Å from the native structure. RDCs on the other hand seem to provide the needed sensitivity as the structure determination converges toward the native conformation. It is therefore reasonable to speculate that the most effective approach to protein folding from NMR data consists of initial rounds of structure determination by NOE data, followed by structure refinement guided by RDC data in the absence of NOE constraints.

9.2 Contribution of TROSY in mitigating limitations of NMR spectroscopy

Many biologically relevant macromolecules and macromolecular complexes are simply too large for traditional NMR spectroscopy studies, with molecular masses beyond the practical range (Fernandez & Wider, 2003). In fact, conventional NMR based techniques often identify two main problems associated with the solution state study of large molecules and macromolecular assemblies: 1. the large number of acquired resonances causes signals to overlap, making spectral analysis very difficult; and 2. because NMR signals of larger molecules relax faster, it often results in line broadening, poor spectral sensitivity, and eventually no NMR signals (Fernandez & Wider, 2003). TROSY is a technique that has profoundly extended the size limit of macromolecules able to be investigated by NMR, making the analyses of molecular systems of up to 1 kDa possible (Fiaux *et al.*, 2002; Riek *et al.*, 2002). The application of this particular technique has made a wide range of novel applications possible (Fernandez & Wider, 2003) by providing much better sensitivity and line width for large proteins by reducing transverse nuclear spin relaxation during chemical shift evolution (Pervushin *et al.*, 1997). This makes the critical step of resonance assignment possible and allows backbone assignment and secondary structure to be obtained, as first

demonstrated with a homo-octameric protein of 110 kDa (Salzmann *et al.*, 2000). In addition, applications of TROSY for side chain resonance assignments have also been demonstrated (Hilty *et al.*, 2002). TROSY has even been incorporated into experimental studies which focus on the dynamics of macromolecules (Zhu *et al.*, 2000). Moreover, TROSY has proven successful in determining structures for some of the most difficult of proteins - membrane proteins (Fernandez *et al.*, 2001a, 2001b). Because TROSY also provides a wide range of NMR measurements with regard to the functional properties of larger macromolecular complexes, it demonstrates great potential for providing clues to the physiological roles of novel proteins and may prove beneficial for drug discovery (Fernandez & Wider, 2003). Other practical applications of TROSY include: the discovery of scalar spin-spin couplings across hydrogen bonds (Cordier & Grzesiek, 1999; Dingley & Grzesiek, 1998; Pervushin *et al.*, 1998), which can be utilized for structure refinement; the measurement of dipolar couplings in large molecules, to determine much larger 3D structures by NMR (Evenäs *et al.*, 2001; Lerche *et al.*, 1999; Yang *et al.*, 1999); and increasing the sensitivity of some triple-resonance experiments for ^{13}C and ^{15}N labeled nucleic acids, so as to increase the range of their functionality to even bigger oligonucleotides (Brutscher & Simorre, 2001; Fiala *et al.*, 2000; Riek *et al.*, 2001; Simon *et al.*, 2001).

In short, the many applications of TROSY and the data made available by its experiments, will contribute significantly by providing important information aimed at solving both future and present biological problems related to the structure and function of large and complex biological molecules.

10. References

- Abola E, Kuhn P, Earnest T *et al.* (2000). Automation of x-ray crystallography. *Nat Struct Biol*, 7 Suppl: 973-977.
- Adams PD, Grosse-Kunstleve RW, & Brunger AT (2003). Computational Aspects of High-throughput Crystallographic Macromolecular Structure Determination, In: *Structural bioinformatics*, Philip E. Bourne, Helge Weissig, editors, pp. 75-87, New Jersey: Wiley-Liss, Inc.
- Adeyeye J, Azurmendi HF, Stroop CJM *et al.* (2003). Conformation of the hexasaccharide repeating subunit from the vibrio cholerae o139 capsular polysaccharide. *Biochemistry*, 42: 3979-3988.
- Al-Hashimi HM, Bolon PJ, & Prestegard JH (2000a). Molecular symmetry as an aid to geometry determination in ligand protein complexes. *J Magn Reson*, 142: 153-158.
- Al-Hashimi HM, Gorin A, Majumdar A *et al.* (2002a). Towards structural genomics of rna: rapid nmr resonance assignment and simultaneous rna tertiary structure determination using residual dipolar couplings. *J Mol Biol*, 318: 637-649.
- Al-Hashimi HM, Gosser Y, Gorin A *et al.* (2002b). Concerted motions in hiv-1 tar rna may allow access to bound state conformations: rna dynamics from nmr residual dipolar couplings. *J. Mol. Biol.*, 315: pp. 95-102.
- Al-Hashimi HM & Patel DJ (2002). Residual dipolar couplings: synergy between nmr and structural genomics. *J Biomol NMR*, 22: 1-8.
- Al-Hashimi HM, Valafar H, Terrell M *et al.* (2000b). Variation of molecular alignment as a means of resolving orientational ambiguities in protein structures from dipolar couplings. *J Magn Reson*, 143: 402-406.

- Andrec M, Du PC, & Levy RM (2001). Protein backbone structure determination using only residual dipolar couplings from one ordering medium. *J Biomol NMR*, 21: 335-347.
- Assfalg M, Bertini I, Turano P, et al. (2003). N-15-h-1 residual dipolar coupling analysis of native and alkaline-k79a saccharomyces cerevisiae cytochrome c. *Biophys J*, 84: 3917-3923.
- Azurmendi HF & Bush CA (2002). Conformational studies of blood group a and blood group b oligosaccharides using nmr residual dipolar couplings. *Carbohydr Res*, 337: 905-915.
- Azurmendi HF, Martin-Pastor M, & Bush CA (2002). Conformational studies of lewis x and lewis a trisaccharides using nmr residual dipolar couplings. *Biopolymers*, 63: 89-98.
- Bailor MH, Musselman C, Hansen AL et al. (2007). Characterizing the relative orientation and dynamics of rna a-form helices using nmr residual dipolar couplings. *Nature Protocols*, 2: pp. 1536-1546.
- Bansal S, Miao X, Adams MWW et al. (2008). Rapid classification of protein structure models using unassigned backbone rdcs and probability density profile analysis (pdpa). *J Magn Reson*, 192: 60-68.
- Bax A (2003). Weak alignment offers new nmr opportunities to study protein structure and dynamics. *Protein Science*, 12: 1-16.
- Bax A, Kontaxis G, & Tjandra N (2001). Dipolar couplings in macromolecular structure determination. *Methods Enzymol*, 339: 127-174.
- Bax A, Vuister GW, Grzesiek S, et al. (1994) Measurement of homonuclear and heteronuclear j-couplings from quantitative j-correlation. In: *Nuclear magnetic resonance*, pt c, pp. 79-105.
- Berg J, Tymoczko J, & Stryer L (2002). In: *Biochemistry*, New York: W H Freeman.
- Berman HM, Westbrook J, Feng Z et al. (2000). The protein data bank. *Nucleic Acids Res*, 28: 235-242.
- Bernado P & Blackledge M (2004a). Anisotropic small amplitude peptide plane dynamics in proteins from residual dipolar couplings. *J Am Chem Soc*, 126: 4907-4920.
- Bernado P & Blackledge M (2004b). Local dynamic amplitudes on the protein backbone from dipolar couplings: toward the elucidation of slower motions in biomolecules. *J Am Chem Soc*, 126: 7760-7761.
- Bertini I, Luchinat C, Turano P et al. (2003). The magnetic properties of myoglobin as studied by nmr spectroscopy. *Chemistry-a European Journal*, 9: 2316-2322.
- Blackledge M (2005). Recent progress in the study of biomolecular structure and dynamics in solution from residual dipolar couplings. *Progress in Nuclear Magnetic Resonance Spectroscopy*, 46: 23-61.
- Bodenhausen G & Ruben DJ (1980). Chemical physics letters; natural abundance n-15 nmr by enhanced heteronuclear spectroscopy. *Chemical Physics Letters*, 69: 185-189.
- Bouvignies G, Bernado P, & Blackledge M (2005). Protein backbone dynamics from n-hn dipolar couplings in partially aligned systems: a comparison of motional models in the presence of structural noise. *J Magn Reson*, 173: 328-338.
- Brunger AT (2007). Version 1.2 of the crystallography and nmr system. *Nat Protoc*, 2: 2728-2733.
- Brutscher B & Simorre JP (2001). Transverse relaxation optimized hcn experiment for nucleic acids: combining the advantages of troy and mq spin evolution. *J Biomol NMR*, 21: 367-372.

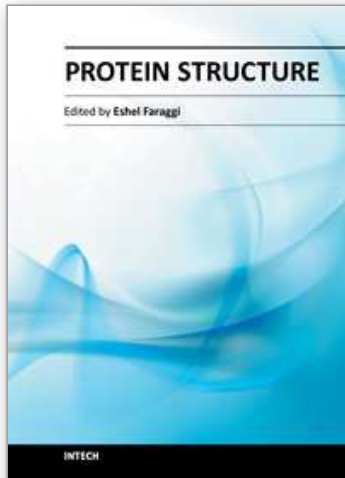
- Bryson M, Tian F, Prestegard JH et al. (2008). Redcraft: a tool for simultaneous characterization of protein backbone structure and motion from rdc data. *J Magn Reson*, 191: 322-334.
- Case, DA (2001). Molecular dynamics and nmr spin relaxation in proteins. *Acc. Chem. Res*, 35: 325-331.
- Cavanagh J, Fairbrother WJ, Palmer III AG et al. (1995). In: *Protein nmr spectroscopy principles and practice*, p. 587.
- Christendat D, Yee A, Dharamsi A et al. (2000). Structural proteomics of an archaeon. *Nat Struct Biol*, 7: 903-909.
- Clore GM & Bewley CA (2002). Using conjoined rigid body/torsion angle simulated annealing to determine the relative orientation of covalently linked protein domains from dipolar couplings. *J. Magn. Reson.*, 154: 329-335.
- Clore GM, Gronenborn AM, & Bax A (1998). A robust method for determining the magnitude of the fully asymmetric alignment tensor of oriented macromolecules in the absence of structural information. *J Magn Reson*, 133: 216-221.
- Clore GM & Iwahara J (2009). Theory, practice, and applications of paramagnetic relaxation enhancement for the characterization of transient low-population states of biological macromolecules and their complexes. *Chem. Rev*, 109: 4108-4139.
- Clore GM, Starich MR, Bewley CA et al. (1999). Impact of residual dipolar couplings on the accuracy of nmr structures determined from a minimal number of noe restraints. *J Am Chem Soc*, 121: 6513-6514.
- Clore GM & Schwieters CD (2003). Journal of the american chemical society; docking of protein-protein complexes on the basis of highly ambiguous intermolecular distance restraints derived from h-1(n)/n-15 chemical shift mapping and backbone n-15-h-1 residual dipolar couplings using conjo. *J Am Chem Soc*, 125: 2902-2912.
- Cordier F & Grzesiek S (1999). Direct observation of hydrogen bonds in proteins by interresidue 3h_{jnc} scalar couplings. *J. Am. Chem. Soc*, 121: 1601-1602.
- Cornilescu G, Delaglio F, & Bax A (1999). Protein backbone angle restraints from searching a database for chemical shift and sequence homology. *J Biomol NMR*, 13: 289-302.
- de Alba E & Tjandra N (2002). Nmr dipolar couplings for the structure determination of biopolymers in solution. *Progress in Nuclear Magnetic Resonance Spectroscopy*, 40: 175-197.
- Delaglio F, Kontaxis G, & Bax A (2000). Protein structure determination using molecular fragment replacement and nmr dipolar couplings. *J Am Chem Soc*, 122: 2142-2143.
- Demers J & Mittermaier A (2009). Binding mechanism of an sh3 domain studied by nmr and itc. *J Am Chem Soc*, 131: 4355-4367.
- Dingley AJ & Grzesiek S (1998). Direct observation of hydrogen bonds in nucleic acid base pairs by internucleotide 2j_{nn} couplings. *J. Am. Chem. Soc*, 120: 8293-8297.
- Dosset P, Hus JC, Marion D et al (2001). Journal of biomolecular nmr; a novel interactive tool for rigid-body modeling of multi-domain macromolecules using residual dipolar couplings. *J Biomol NMR*, 20: 223-231.
- Evenäs J, Mittermaier A, Yang D et al. (2001). Measurement of (13)c(alpha)-(13)c(beta) dipolar couplings in (15)n,(13)c,(2)h-labeled proteins: application to domain orientation in maltose binding protein. *J Am Chem Soc*, 123: 2858-2864.
- Farmer BT, Venters RA, Spicer LD et al. (1992). A refocused and optimized hnca: increased sensitivity and resolution in large macromolecules, pp. 195-202.

- Fernandez C, Adeishvili K, & Wüthrich K (2001a). Transverse relaxation-optimized nmr spectroscopy with the outer membrane protein ompx in dihexanoyl phosphatidylcholine micelles. *Proc Natl Acad Sci U S A*, 98: 2358-2363.
- Fernandez C, Hilty C, Bonjour S et al. (2001b). Solution nmr studies of the integral membrane proteins ompx and ompa from escherichia coli. *FEBS Lett*, 504: 173-178.
- Fernandez C & Wider G (2003). Trosy in nmr studies of the structure and function of large biological macromolecules. *Current Opinion in Structural Biology*, 13: 570-580.
- Fiala R, Czernek J, & Sklenár V (2000). Transverse relaxation optimized triple-resonance nmr experiments for nucleic acids. *J Biomol NMR*, 16: 291-302.
- Fiaux J, Bertelsen EB, Horwich AL et al. (2002). Nmr analysis of a 900k groel-groes complex, 418: 207-211.
- Fowler CA, Tian F, Al-Hashimi HM et al. (2000). Rapid determination of protein folds using residual dipolar couplings. *J Mol Biol*, 304: 447-460.
- Gardner KH & Kay LE (1998). The use of 2h, 13c, 15n multidimensional nmr to study the structure and dynamics of proteins. *Annu Rev Biophys Biomol Struct*, 27: 357-406.
- Grzesiek S & Bax A (1993). Amino acid type determination in the sequential assignment procedure of uniformly 13c/15n-enriched proteins. *J Biomol NMR*, 3: 185-204.
- Henzler-Wildman K & Kern D (2007). Dynamic personalities of proteins. *Nature*, 450: 964-972.
- Hilty C, Fernández C, Wider G et al. (2002). Side chain nmr assignments in the membrane protein ompx reconstituted in dhpc micelles. *J Biomol NMR*, 23: 289-301.
- Hornak J (1997). In: *The basics of nmr*, Retrieved from <www.cis.rit.edu/htbooks/nmr>
- Jeener J, Meier BH, Bachmann P et al. (1979). Investigation of exchange processes by two-dimensional nmr spectroscopy. *J Chem Phys*, 71: 4546-4553.
- Jung J & Lee W (2004). Structure-based functional discovery of proteins: structural proteomics. *J Biochem Mol Biol*, 37: 28-34.
- Kay LE, Ikura M, Tschudin R et al. (1990). Three-dimensional triple-resonance nmr spectroscopy of isotopically enriched proteins. *Journal of Magnetic Resonance (1969)*, 89: 496-514.
- Key J, Scheuermann TH, Anderson PC et al. (2009). Principles of ligand binding within a completely buried cavity in hif2alpha pas-b. *J Am Chem Soc*, 131: 17647-17654.
- Kleckner IR & Foster MP (2011). An introduction to nmr-based approaches for measuring protein dynamics. *Biochimica et Biophysica Acta (BBA) - Proteins & Proteomics*, 1814: 942-968.
- Langmead CJ & Donald BR (2003). 3d structural homology detection via unassigned residual dipolar couplings. *Proc IEEE Comput Soc Bioinform Conf*, 2: p. pp. 209-217.
- Lerche MH, Meissner A, Poulsen FM et al. (1999). Pulse sequences for measurement of one-bond (15)n-(1)h coupling constants in the protein backbone. *J Magn Reson*, 140: 259-263.
- Liu H & Hsu J (2005). Recent developments in structural proteomics for protein structure determination. *Proteomics*, 5: 2056-2068.
- Liu Y, Kahn RA, & Prestegard JH (2010). Dynamic structure of membrane-anchored arf*gtp. *Nat Struct Mol Biol*, 17: 876-881.
- Loria JP, Berlow RB, & Watt ED (2008). Characterization of enzyme motions by solution nmr relaxation dispersion. *Acc. Chem. Res*, 41: 214-221.
- Losonczi JA, Andrec M, Fischer MWF et al. (1999). Order matrix analysis of residual dipolar couplings using singular value decomposition. *J Magn Reson*, 138: 334-342.
- Marassi FM & Opella SJ (2002). Simultaneous resonance assignment and structure determination in the solid-state nmr spectrum of a membrane protein in lipid bilayers. *Biophys J*, 82: 467A-467A.

- Marassi FM & Opella SJ (2003). Simultaneous assignment and structure determination of a membrane protein from nmr orientational restraints. *Protein Science*, 12: 403-411.
- Markley JL, Ulrich EL, Westler WM, et al. (2003). Macromolecular Structure Determination by NMR Spectroscopy, In: *Structural bioinformatics*, Bourne PE, Weissig H, editors, pp. 89-113, New Jersey: Wiley-Liss, Inc.
- Montelione GT, Zheng DY, Huang YPJ et al. (2000). Protein nmr spectroscopy in structural genomics. *Nature Structural Biology*, 7: 982-985.
- Moseley HN & Montelione GT (1999). Automated analysis of nmr assignments and structures for proteins. *Curr Opin Struct Biol*, 9: 635-642.
- Muhandiram D & Kay L (1994). Gradient-enhanced triple-resonance three-dimensional nmr experiments with improved sensitivity. *Journal of Magnetic Resonance, Series B*, 103: 203-216.
- Nitz M, Sherawat M, Franz KJ, et al. (2004). Structural origin of the high affinity of a chemically evolved lanthanide-binding peptide. *Angew. Chem. Int. Ed. Engl.*, 43: pp. 3682-3685.
- O'Neil-Cabello E, Bryce DL, Nikonowicz EP et al. (2004). Measurement of five dipolar couplings from a single 3d nmr multiplet applied to the study of rna dynamics, 126: 66-67.
- Ooi L (2010). In: *Principles of x-ray crystallography*, New York: Oxford University Press.
- Opella SJ & Marassi FM (2004). Structure determination of membrane proteins by nmr spectroscopy. *Chemical Reviews*, 104: 3587-3606.
- Park SH, Son WS, Mukhopadhyay R et al. (2009). Phage-induced alignment of membrane proteins enables the measurement and structural analysis of residual dipolar couplings with dipolar waves and lambda-maps. *J Am Chem Soc*, 131: 14140-14141.
- Pervushin K, Ono A, Fernandez C et al. (1998). Nmr scalar couplings across watson-crick base pair hydrogen bonds in dna observed by transverse relaxation-optimized spectroscopy. *Proc Natl Acad Sci U S A*, 95: 14147-14151.
- Pervushin K, Riek R, Wider G et al. (1997). Attenuated t-2 relaxation by mutual cancellation of dipole-dipole coupling and chemical shift anisotropy indicates an avenue to nmr structures of very large biological macromolecules in solution, 94: 12366-12371.
- Press W, Teukolsky SA, Vetterling WT et al. (2002). In: *Numerical recipes in c, the art of scientific computing*.
- Prestegard JH (1998). New techniques in structural nmr--anisotropic interactions. *Nat Struct Biol*, 5 Suppl: 517-522.
- Prestegard JH, al-Hashimi HM, & Tolman JR (2000). Nmr structures of biomolecules using field oriented media and residual dipolar couplings. *Q Rev Biophys*, 33: 371-424.
- Prestegard JH, Mayer KL, Valafar H et al. (2005). Determination of protein backbone structures from residual dipolar couplings. *Methods Enzymol*, 394: 175-209.
- Prestegard JH, Valafar H, Glushka J et al. (2001). Nuclear magnetic resonance in the era of structural genomics. *Biochemistry*, 40: 8677-8685.
- Prestegard JH & Kishore A (2001). Current opinion in structural biology; partial alignment of biomolecules: an aid to nmr characterization. *Current Opinion in Structural Biology*, 5: 584-590.
- Raman S, Huang YJ, Mao B et al. (2010a). Accurate automated protein nmr structure determination using unassigned noesy data. *J. Am. Chem. Soc.*, 132: pp. 202-207.
- Raman S, Lange OF, Rossi P et al. (2010b). Nmr structure determination for larger proteins using backbone-only data. *Science*, 327: 1014-1018.
- Riek R, Fiaux J, Bertelsen EB et al. (2002). Solution nmr techniques for large molecular and supramolecular structures. *J Am Chem Soc*, 124: 12144-12153.

- Riek R, Pervushin K, Fernandez C et al. (2001). [(13)c,(13)c]- and [(13)c,(1)h]-troscopy in a triple resonance experiment for ribose-base and intrabase correlations in nucleic acids. *J Am Chem Soc*, 123: 658-664.
- Rohl CA & Baker D (2002). De novo determination of protein backbone structure from residual dipolar couplings using rosetta. *J Am Chem Soc*, 124: 2723-2729.
- Sali A, Glaeser R, Earnest T et al. (2003). From words to literature in structural proteomics. *Nature*, 422: 216-225.
- Salzmann M, Pervushin K, Wider G et al. (2000). Nmr assignment and secondary structure determination of an octameric 110 kda protein using trosy in triple resonance experiments. *J. Am. Chem. Soc*, 122: 7543-7548.
- Saupe A & Englert G (1963). High-resolution nuclear magnetic resonance spectra of orientated molecules. *Phys Rev Lett*, 11: 462-464.
- Schwieters CD, Kuszewski JJ, Tjandra N et al. (2003). The xplor-nih nmr molecular structure determination package. *J Magn Reson*, 160: 65-73.
- Shealy P, Liu Y, Simin M et al. (2011). Backbone resonance assignment and order tensor estimation using residual dipolar couplings. *J Biomol NMR*, 50: 357-369.
- Simon B, Zanier K, & Sattler M (2001). A trosy relayed hcch-cosy experiment for correlating adenine h2/h8 resonances in uniformly 13c-labeled rna molecules. *J Biomol NMR*, 20: 173-176.
- Tian F, Al-Hashimi HM, Craighead JL et al. (2001a). Conformational analysis of a flexible oligosaccharide using residual dipolar couplings. *J Am Chem Soc*, 123: 485-492.
- Tian F, Valafar H, & Prestegard JH (2001b). A dipolar coupling based strategy for simultaneous resonance assignment and structure determination of protein backbones. *J Am Chem Soc*, 123: 11791-11796.
- Tjandra N & Bax A (1997). Direct measurement of distances and angles in biomolecules by nmr in a dilute liquid crystalline medium. *Science*, 278: 1111-1114.
- Tjandra N, Grzesiek S, & Bax A (1996). Magnetic field dependence of nitrogen-proton j splittings in n-15-enriched human ubiquitin resulting from relaxation interference and residual dipolar coupling. *J Am Chem Soc*, 118: 6264-6272.
- Tjandra N, Omichinski JG, Gronenborn AM et al. (1997). Use of dipolar h-1-n-15 and h-1-c-13 couplings in the structure determination of magnetically oriented macromolecules in solution. *Nature Structural Biology*, 4: 732-738.
- Tjandra N, Tate S, Ono A et al. (2000). The nmr structure of a dna dodecamer in an aqueous dilute liquid crystalline phase. *J. Am. Chem. Soc.*, 122: 6190-6200.
- Tolman JR (2001). Dipolar couplings as a probe of molecular dynamics and structure in solution. *Curr Opin Struct Biol*, 11: 532-539.
- Tolman JR, Flanagan JM, Kennedy MA et al. (1995). Nuclear magnetic dipole interactions in field-oriented proteins - information for structure determination in solution. *Proc Natl Acad Sci U S A*, 92: 9279-9283.
- Tolman JR & Prestegard JH (1996). Measurement of amide n-15-h-1 one-bond couplings in proteins using accordion heteronuclear-shift-correlation experiments. *Journal of Magnetic Resonance Series B*, 112: 269-274.
- Ulmer TS, Ramirez BE, Delaglio F et al. (2003). Evaluation of backbone proton positions and dynamics in a small protein by liquid crystal nmr spectroscopy. *J Am Chem Soc*, 125: 9179-9191.
- Valafar H, Mayer K, Bougault C et al. (2005). Backbone solution structures of proteins using residual dipolar couplings: application to a novel structural genomics target. *J Struct Funct Genomics*, 5: 241-254.

- Valafar H & Prestegard JH (2003). Rapid classification of a protein fold family using a statistical analysis of dipolar couplings. *Bioinformatics*, 19: 1549-1555.
- Valafar H & Prestegard J (2004). Redcat: a residual dipolar coupling analysis tool. *J Magn Reson*, 167: 228-241.
- Vermeulen A, Zhou HJ & Pardi A (2000). Determining dna global structure and dna bending by application of nmr residual dipolar couplings. *J Am Chem Soc*, 122: 9638-9647.
- Wang J, Walsh JD, Kuszewski J et al. (2007). Periodicity, planarity, and pixel (3p): a program using the intrinsic residual dipolar coupling periodicity-to-peptide plane correlation and phi/psi angles to derive protein backbone structures. *J Magn Reson*, 189: 90-103.
- Wang LC & Donald BR (2004). Exact solutions for internuclear vectors and backbone dihedral angles from nh residual dipolar couplings in two media, and their application in a systematic search algorithm for determining protein backbone structure. *J Biomol NMR*, 29: 223-242.
- Wang X, Bansal S, Jiang M et al. (2008). Rdc-assisted modeling of symmetric protein homooligomers. *Protein Sci.*, 17: p. pp. 899-907.
- Wider G & Wüthrich K (1999). Nmr spectroscopy of large molecules and multimolecular assemblies in solution. *Curr Opin Struct Biol*, 9: 594-601.
- Wilson MA & Brunger AT (2000). The 1.0 Å crystal structure of ca(2+)-bound calmodulin: an analysis of disorder and implications for functionally relevant plasticity. *J Mol Biol*, 301: 1237-1256.
- Wishart DS & Nip AM (1998). Protein chemical shift analysis: a practical guide. *Biochem Cell Biol*, 76: 153-163.
- Wishart DS & Sykes BD (1994). The ¹³C chemical-shift index: a simple method for the identification of protein secondary structure using ¹³C chemical-shift data. *J Biomol NMR*, 4: 171-180.
- Wishart DS, Sykes BD, & Richards FM (1991). Relationship between nuclear magnetic resonance chemical shift and protein secondary structure. *J Mol Biol*, 222: 311-333.
- Wishart DS, Sykes BD, & Richards FM (1992). The chemical shift index: a fast and simple method for the assignment of protein secondary structure through nmr spectroscopy. *Biochemistry*, 31: 1647-1651.
- Wüthrich K (1998). The second decade--into the third millenium. *Nat Struct Biol*, 5 Suppl: 492-495.
- Yang DW, Venters RA, Mueller G et al. (1999). Trosy-based hncO pulse sequences for the measurement of ¹hN-¹⁵n, ¹⁵n-¹³CO, ¹hN-¹³CO, ¹³CO-¹³CA and ¹hN-¹³C α ± dipolar couplings in ¹⁵N, ¹³C, 2H-labeled proteins. *J. Biomol. NMR*, 14: 333-343.
- Yi X, Venot A, Glushka J et al. (2004). Glycosidic torsional motions in a bicelle-associated disaccharide from residual dipolar couplings. *J Am Chem Soc*, 126: 13636-13638.
- Zeeb M & Balbach J (2004). Protein folding studied by real-time nmr spectroscopy. *Methods*, 34: 65-74.
- Zhou HJ, Vermeulen A, Jucker FM et al. (1999). Incorporating residual dipolar couplings into the nmr solution structure determination of nucleic acids. *Biopolymers*, 52: 168-180.
- Zhu G, Xia Y, Nicholson LK et al. (2000). Protein dynamics measurements by trosy-based nmr experiments. *J Magn Reson*, 143: 423-426.



Protein Structure

Edited by Dr. Eshel Faraggi

ISBN 978-953-51-0555-8

Hard cover, 396 pages

Publisher InTech

Published online 20, April, 2012

Published in print edition April, 2012

Since the dawn of recorded history, and probably even before, men and women have been grasping at the mechanisms by which they themselves exist. Only relatively recently, did this grasp yield anything of substance, and only within the last several decades did the proteins play a pivotal role in this existence. In this expose on the topic of protein structure some of the current issues in this scientific field are discussed. The aim is that a non-expert can gain some appreciation for the intricacies involved, and in the current state of affairs. The expert meanwhile, we hope, can gain a deeper understanding of the topic.

How to reference

In order to correctly reference this scholarly work, feel free to copy and paste the following:

Homayoun Valafar and Stephanie J. Irausquin (2012). Structure and Dynamics of Proteins from Nuclear Magnetic Resonance Spectroscopy, Protein Structure, Dr. Eshel Faraggi (Ed.), ISBN: 978-953-51-0555-8, InTech, Available from: <http://www.intechopen.com/books/protein-structure/structure-and-dynamics-of-proteins-from-nmr-spectroscopy>

INTECH
open science | open minds

InTech Europe

University Campus STeP Ri
Slavka Krautzeka 83/A
51000 Rijeka, Croatia
Phone: +385 (51) 770 447
Fax: +385 (51) 686 166
www.intechopen.com

InTech China

Unit 405, Office Block, Hotel Equatorial Shanghai
No.65, Yan An Road (West), Shanghai, 200040, China
中国上海市延安西路65号上海国际贵都大饭店办公楼405单元
Phone: +86-21-62489820
Fax: +86-21-62489821

© 2012 The Author(s). Licensee IntechOpen. This is an open access article distributed under the terms of the [Creative Commons Attribution 3.0 License](#), which permits unrestricted use, distribution, and reproduction in any medium, provided the original work is properly cited.

IntechOpen

IntechOpen