

# We are IntechOpen, the world's leading publisher of Open Access books Built by scientists, for scientists

4,800

Open access books available

122,000

International authors and editors

135M

Downloads

Our authors are among the

154

Countries delivered to

TOP 1%

most cited scientists

12.2%

Contributors from top 500 universities



WEB OF SCIENCE™

Selection of our books indexed in the Book Citation Index  
in Web of Science™ Core Collection (BKCI)

Interested in publishing with us?  
Contact [book.department@intechopen.com](mailto:book.department@intechopen.com)

Numbers displayed above are based on latest data collected.  
For more information visit [www.intechopen.com](http://www.intechopen.com)



## Water Pollution of Oued Medjerda in Algerian Souk Ahras Region

A. Nait Merzoug<sup>1,2</sup> and H. Merazig<sup>2</sup>

<sup>1</sup>Laboratory of Science and Techniques of Water and Environnement,  
University Center Mohamed Cherif Messadia, Souk Ahras,

<sup>2</sup>Research Unit of Environnemental Chemistry and Structural Molecular Chemistry,  
Department of Exact Sciences Faculty, Mentouri University,  
Route de Ain El Bey, Constantine,  
Algeria

### 1. Introduction

Water has a fundamental impact on the economy and it is at the center of strategic interests. It is an essential element of daily life for each and every one of us and a vital source of wealth and can become a possible *destabilizing* factor for the countries of the disinherited areas. The water provision is becoming more and more alarming which is due the galloping demography and the increasing droughts during these last years. In 2002, 1.5 million humans did not have access to safe drinking water and 2.5 million individuals in the world did not benefit from cleansing service (Phiri, 2005), (Lefort, 2006).

Algeria is one of the most underprivileged areas in the world with regard to hydrous availability (A. N. B. 2001). Furthermore, the demographic explosion and the economic growth led to a very high water demand which by far exceeds the available resources (Ajayi, 2002), the annual availability of water in east-Algeria is 600 m<sup>3</sup>/inhabitant year. This places it in the poor category countries in hydrous resources with respect to the rarity threshold level, fixed by the World Bank, of 1000 m<sup>3</sup>/inhabitant year (A. N. B. 2001), (Bouchentouf, 1994).

The strategy of any developing region in a country must necessarily be based primarily on "The control of water resources," they must be translated into a rational, continuous and sustainable water potential in the socio-economic order. Faced with ever-increasing challenges of water resource management in the country, a coherent politic of water at the national level is essential. Where with the development of the urbanization and the industrialization, as well as the evolution of consumption modes the discharges of waste water were considerably evolved in quantity and in quality. So sewer systems collect all the varieties of discharges such as domestic, industrial and commercial discharges with very diverse characteristics. The aim of the wastewater treatment was to reduce the pollution load they carry in order to protect the receiving natural environment such us sea water, oued...etc. and eventually for its future uses (fishing, leisure, food, agricultural or industrial use, etc.).

From this perspective our contribution will be particularly focused on the impact of residual treated wastewater from the sewage treatment plant (STEP) of Hennencha (Souk Ahras) on the water quality of Oued Medjerda, Principal River in the region, and eventually of Ain Dalia Dam.

Souk Ahras city is located at north east of Algeria and extends on a surface of 4360 km<sup>2</sup>. It has four dams and an exclusive dependence on Medjerda River for its provision (ANRH, 2003). This natural water source is the principal river of the Maghreb region by its flow length as well as its area and the water volume procured (Derradji, 2004), (Louis, 1956).

## 2. Materials and methods

### 2.1 Study area

The low plain of Medjerda is situated in the north east of Algeria, at 680 km from Algiers and at 100 km from Annaba. The Medjerda River crosses the territories of two states: Algeria in its high part and Tunisia in its average and low parts. It takes its source from Khemissa, runs towards the east before discharging its contents in the Mediterranean sea, in the “golf of Tunis” (Figure. 1). It extends on 416 Km, 106 Km of which depend on the authority Souk Ahras city (Athmani, 2005). The river displays a flow that widely varies with the season, ranging from 1000 m<sup>3</sup>/s at winter to 1 m<sup>3</sup>/s at summer (A.B.H. 2001). The population of the studied area reaches more than 120000 inhabitants.



Fig. 1. Localization on map of Medjerda River (Elkenedj, 2009).

Realized in 1991 for a capacity of 200 m<sup>3</sup>/day, the treatment plant of waste water (STEP of Henancha) receives currently more than 774 m<sup>3</sup>/day causing serious water quality problems in Oued Medjerda which is the first receiver of the STEP rejections and also on the water quality of Ain Dalia dam located at 600 m downstream from STEP.

Geographical location:

The commune of Hennencha is located at 15 km at the West of Souk Ahras city. It is localised with the Lambert coordinates (Northern Algeria): X=96,977Km; Y=340,349Km figureN<sup>o</sup> 2.

## 2.2 Sampling

Samples from the Medjerda River were taken from sites A and E respectively located upstream upstream and downstream the STEP. However, both sites are situated upstream the Ain Dalia dam. The sampling procedure was carried out once a month from Mars to July 2009.

## 2.3 Sampling procedure and material

The samples were taken in PVC 2-liter bottles. Before use, the bottles were treated with nitric acid, rinsed with distilled water and dripped before being washed three times with the water to be analyzed.

The sampling was carried out manually from the two fixed intake points. The bottle was held with one hand, immersed to a 20 cm depth, filled with water and hermetically closed. Then the samples were carefully and promptly transported to the laboratory after collection at a temperature of 4°C in order to ensure the physico-chemical parameters.

## 2.4 Chemical and physical analysis

The knowledge of some basic physical and chemical parameters offers a preliminary estimation of the water quality and the extent of eventual contamination. The physico-chemical parameters were determined by standard chemical and instrumental methods.

The suspended Matter (SM) in water after and before STEP rejections was determined using centrifugation. A sample of 100 ml of water is poured into the cup and centrifuged for 20 min at 3000 tr/min. The reaping cullet centrifuge is placed in a porcelain dish and dried to constant weight at 1050 C. After drying, the dish is placed in the desiccator for one hour and then it is weighed quickly.

Chemical Oxygen Demand (COD) is measured by colorimetric method after digestion of the sample for two hours in a COD reactor (DCO Spectrophotometer DREU2010 Adapteur de tube DCO sur DREL12010). When the biochemical oxygen demand (BD05) is defined as the amount of oxygen consumed speaks aerobic micro-organisms for the decomposition of biodegradable organic matter in the water to be analyzed for a period of five days.

The sample is stirred in a flask sealed incubator connected to a mercury manometer During biodegradation of organic matter, microorganisms consume oxygen from the air in the bottle causing a reduction in pressure above the sample. This vacuum is transmitted to the mercury manometer and oxygen consumption and read on the scale gauge.



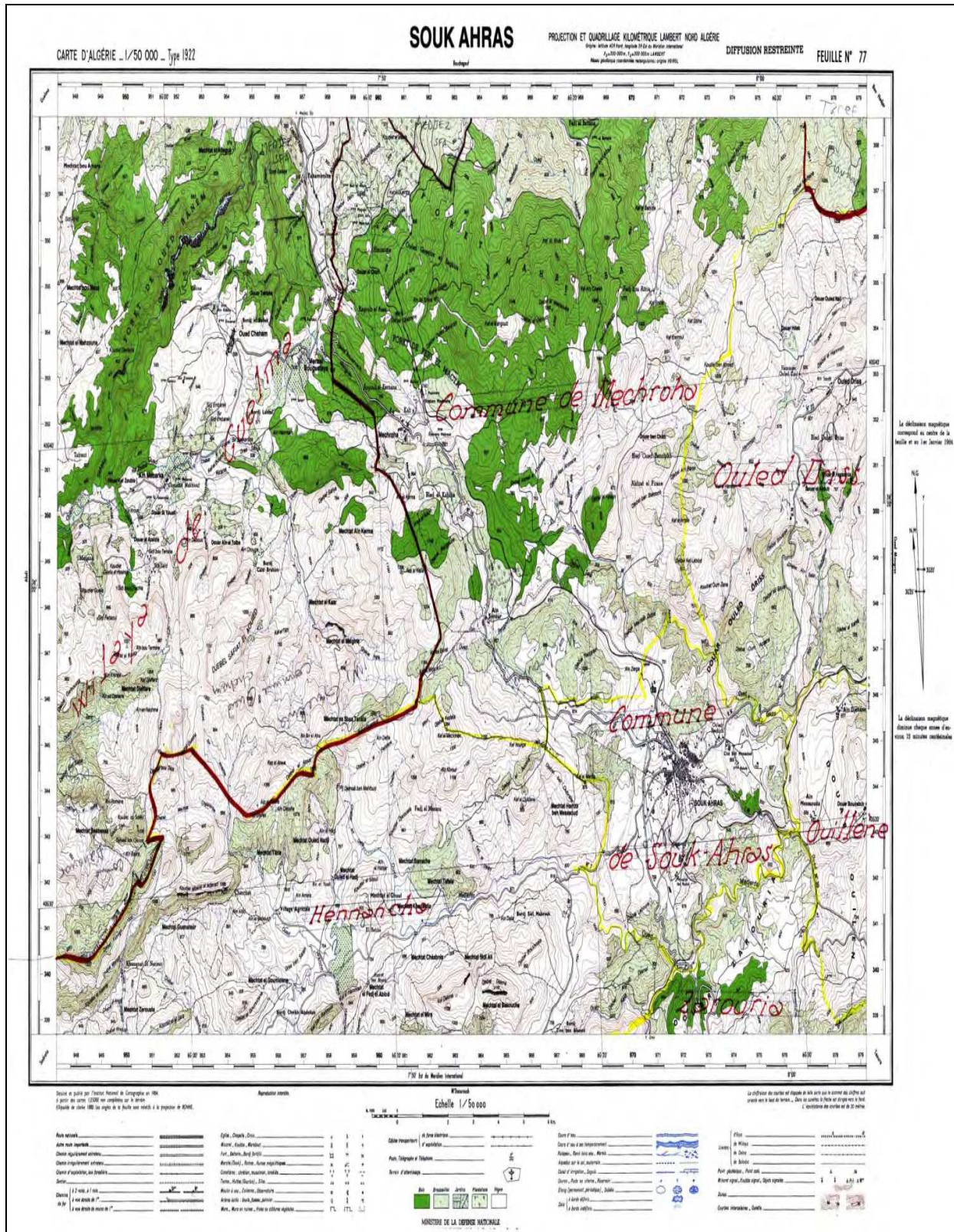


Fig. 2. Geographic area of Souk Ahras(Elkenedj, 2009).

So, we used colorimetric methods in order to quantify the major elements ( $\text{NH}_4^+$ ,  $\text{NO}_2^-$ ,  $\text{NO}_3^-$ ). For each determination, a water volume of 20 ml was mixed in a cell with the suitable

reagent HACH. The unit was stirred and then left at rest for a pre-determined time to allow the complete colour-making reaction of the analyte with the reagent. The cell was then placed in a calibrated spectrophotometer, previously set at the wavelength of maximum absorbance. The quantification of the heavy metals lead (Pb) and cadmium (Cd) and selenium (Se) was carried out by a Lovibond spectrophotometer. The methods of analysis of the remaining parameters are gathered on the (Table. 1).

Temperature	Thermometer
pH	Potentiometry
COD	Reflux method
BDO <sub>5</sub>	5- days incubation
Suspended matter	Gravimetric
Nitrates	Colorimetric method
Nitrites	Colorimetric method
Ammonium ions	Colorimetric method
Lead	Photometric method
Cadmium	Photometric method
Selenium	Photometric method

Table 1. Water quality test methods.

### 3. Results and discussion

The results of the physico-chemical analyses of the Medjerda water before and after the STEP effluent input (site E and A respectively) are reported on **Tables 2** and **3** respectively.

Period	T (°C)	pH	SM (mg/l)	COD (mg/l)	BDO <sub>5</sub> (mg/l)	NO <sub>3</sub> <sup>-</sup> (mg/l)	NO <sub>2</sub> <sup>-</sup> (mg/l)	NH <sub>4</sub> <sup>+</sup> (mg/l)	Pb (mg/l)	Cd (mg/l)	Se (mg/l)
March	18.5	7.60	19	11	1.4	0.006	0.002	0.008	0.01	0.08	/
April	18.5	7.39	25.5	82.2	4.6	5.4	0.04	0.11	0.76	0.09	/
May	19.7	7.77	31.6	9	2	1.9	0.003	0.12	0.85	0.09	/
June	20.3	7.81	40.5	25	15	1.7	0.002	0.12	1.18	0.10	/
July	24.8	7.52	55	37	19	0.7	0.001	0.13	1.44	0.18	/
Limiting values	30	7-9	30	120	40	50	0.1	0.5	0.03	0.01	/

Table 2. Water parameters at site E (upstream STEP).

Period	T (°C)	pH	SM (mg/l)	COD (mg/l)	BDO <sub>5</sub> (mg/l)	NO <sub>3</sub> <sup>-</sup> (mg/l)	NO <sub>2</sub> <sup>-</sup> (mg/l)	NH <sub>4</sub> <sup>+</sup> (mg/l)	Pb (mg/l)	Cd (mg/l)	Se (mg/l)
March	18.2	7.47	66.5	118	45.8	0.7	0.26	2.64	0.04	0.123	/
April	18.4	7.19	90.5	296	47	9.4	0.68	5.92	1.84	0.133	/
May	20.3	7.50	109.6	132	33	2.6	0.37	6.82	1.86	0.169	/
June	21	7.88	154.5	144	75	2.3	0.14	7.14	1.95	0.172	/
July	25.1	7.72	155	158	145	1.9	0.006	11.92	2.08	0.280	/

Table 3. Water parameters at site A (downstream STEP).



### 3.1 Temperature

The water temperature plays an important role in the solubility of salts and gases. As reported in (figure. 3) the maximal temperatures were recorded in July, specifically 25,1 °C at site A and 24,8 °C at site E. The temperatures observed at the both was lower than the Algerian standards; we may recall that temperatures higher than 15°C favor the development of micro-organisms and in the same time intensify the organo-leptical parameters like odor and activate chemical reactions (Athmani, A. S. 2005), (Guasmi, 2004), (Botton et all. 1999), (Meinck et all. 1977).

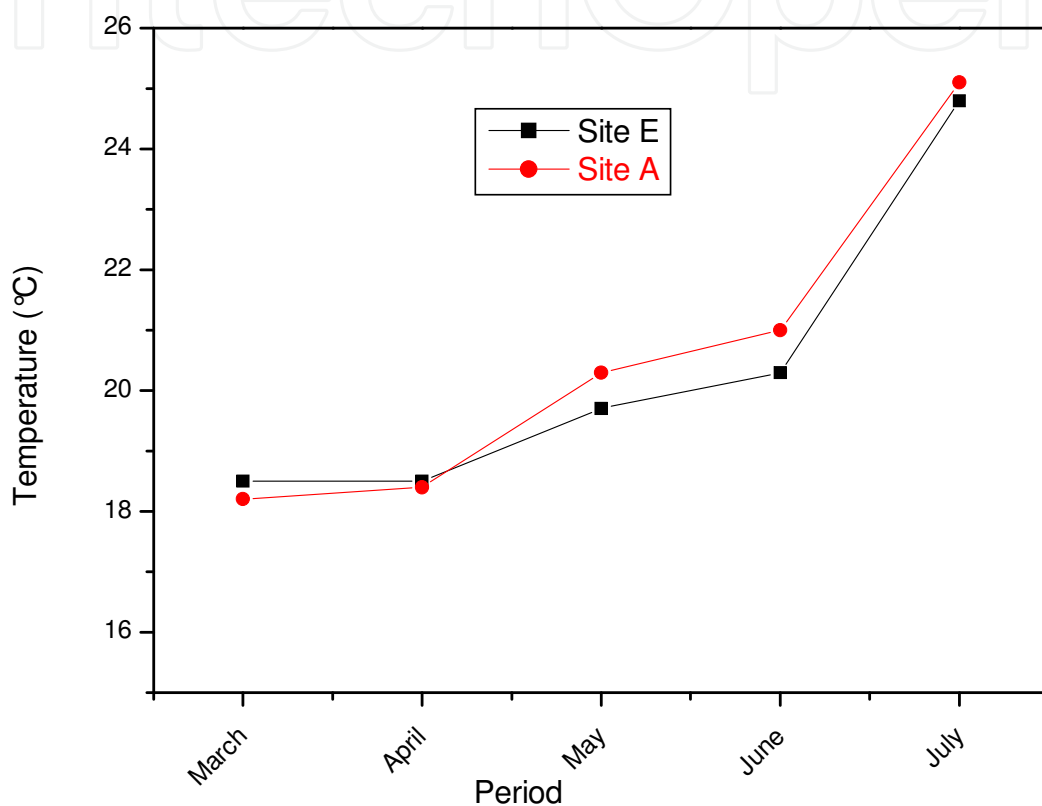


Fig. 3. Temperature variations before and after the intake of STEP effluent as a function of time.

### 3.2 pH

The pH is also a factor which influences the biological activity of the water micro flora. As seen on (figure 4) all samples from both sites display a slightly basic pH, ranging from 7,4 to 7,9 in the first site and from 7,1 to 7,9 in the second one. Generally, the obtained values were in agreement with the Algerian and the world health organization standards of 7,0 to 8,5. A neutral pH in the interval (6.5 - 8.5) characterizes water where life develops in optimal way (Larpent, 1997), (Guasmi & Djabri, 2006).

### 3.3 Suspended matters

To appreciate a water quality; it is always necessary to estimate quantitatively its load in dissolved and particular matter. As shown in (Figure. 5) we notice that the contents in

suspended matter (SM) are more raised in the site A than in the site E and the values vary from 19 to 55 (mg/g) in the first one and from 66,5 to 155 in the second.

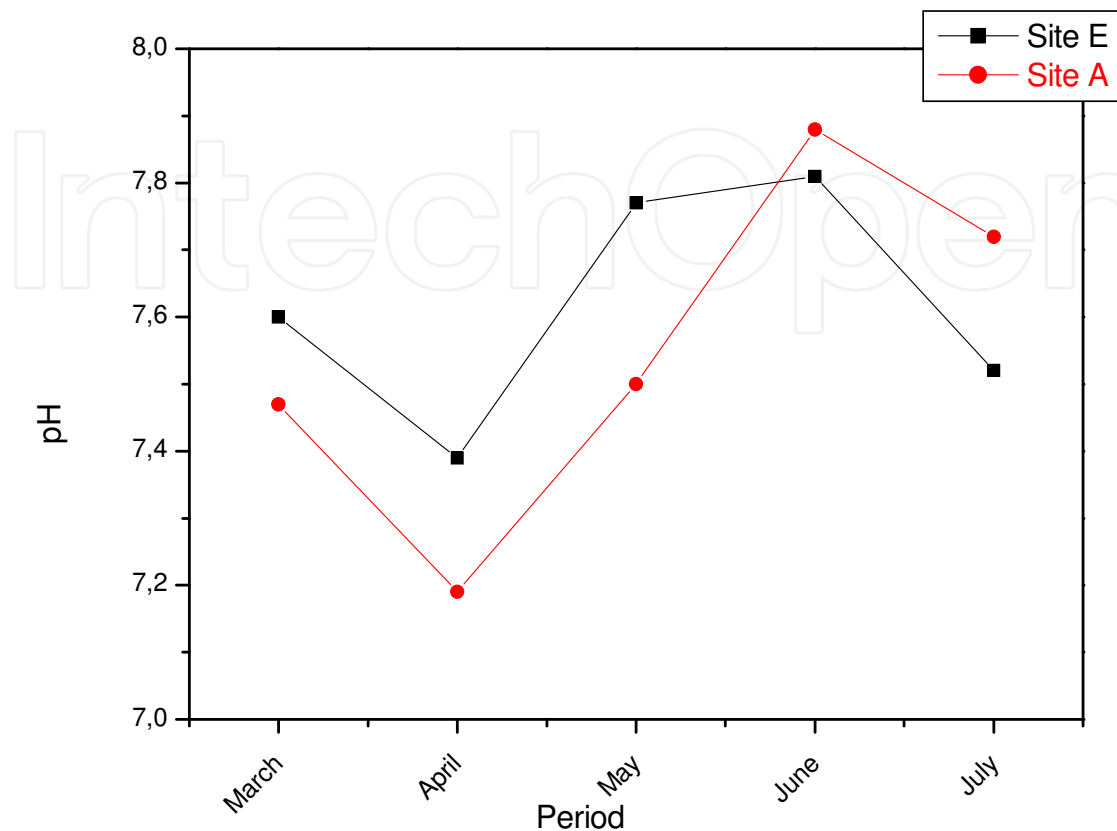


Fig. 4. pH variations before and after the intake of STEP effluent as a function of time.

We also noticed that the suspended matter content varies significantly with the season and the rates are higher in dry period than in pluvial one.

As soon as suspended matter content exceeds the Algerian standards in site A and that can induce the accumulation of higher quantities of toxic substances such as metals, pesticides, mineral oils, polycyclic aromatic hydrocarbons (Tiri et al. 2007), (Derradji et al. 2007), (Abulude et al. 2007), (Bouchenafa et al. 2008) which may have an adverse effect on water quality.

### 3.4 Chemical oxygen demand (COD) and biological demand of oxygen (BDO<sub>5</sub>)

The Chemical Oxygen Demand (COD) is the amount of oxygen consumed in mg/l, for oxidable materials in an effluent. It is representative of most of organic compounds but also oxidable inorganic salts (sulfides, chlorides...).

As shown in (Figures. 6) we noticed that values of chemical oxygen demand are lower than the Algerian standards in the site E but higher in the site A. We also note that most of the values exceed the Algerian standards in the site A for a maximum of 296 mg/l. This allows to classifying the water of this site as very bad quality. On the other hand, the high temperatures of the warmest months and also the dry periods of the year, seem to increase significantly the COD of these water.



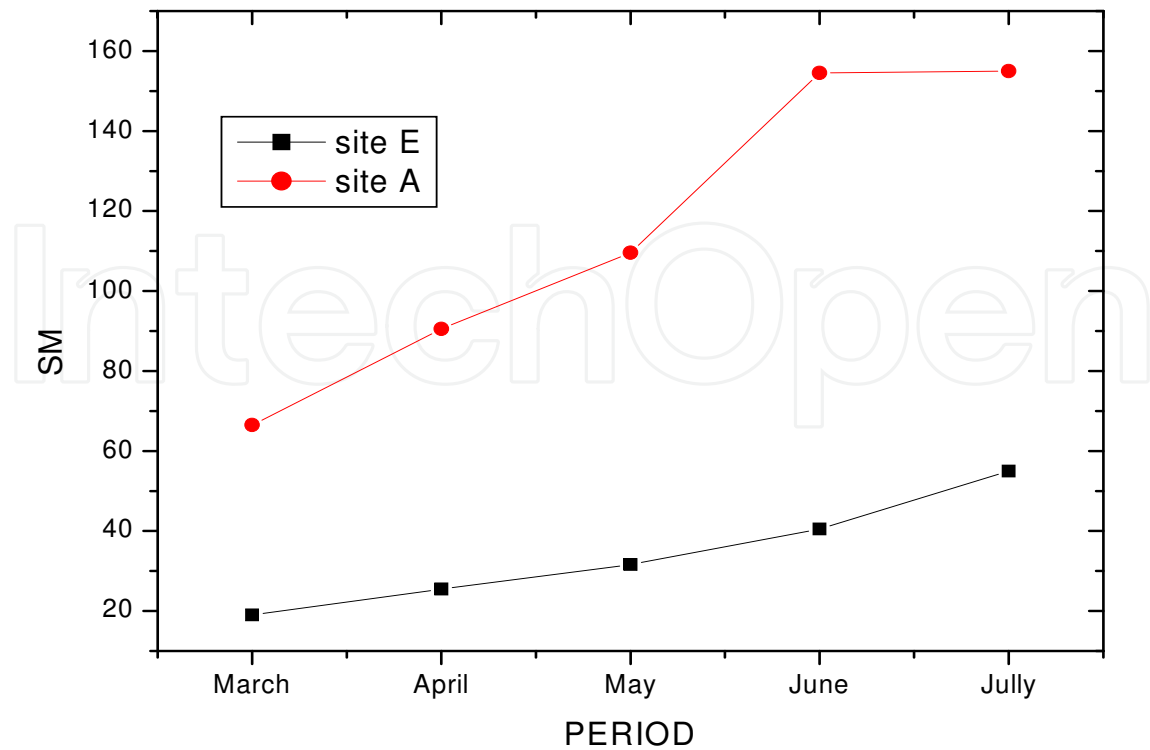


Fig. 5. Total suspended solids variations before and after the intake of STEP effluent as a function of time.

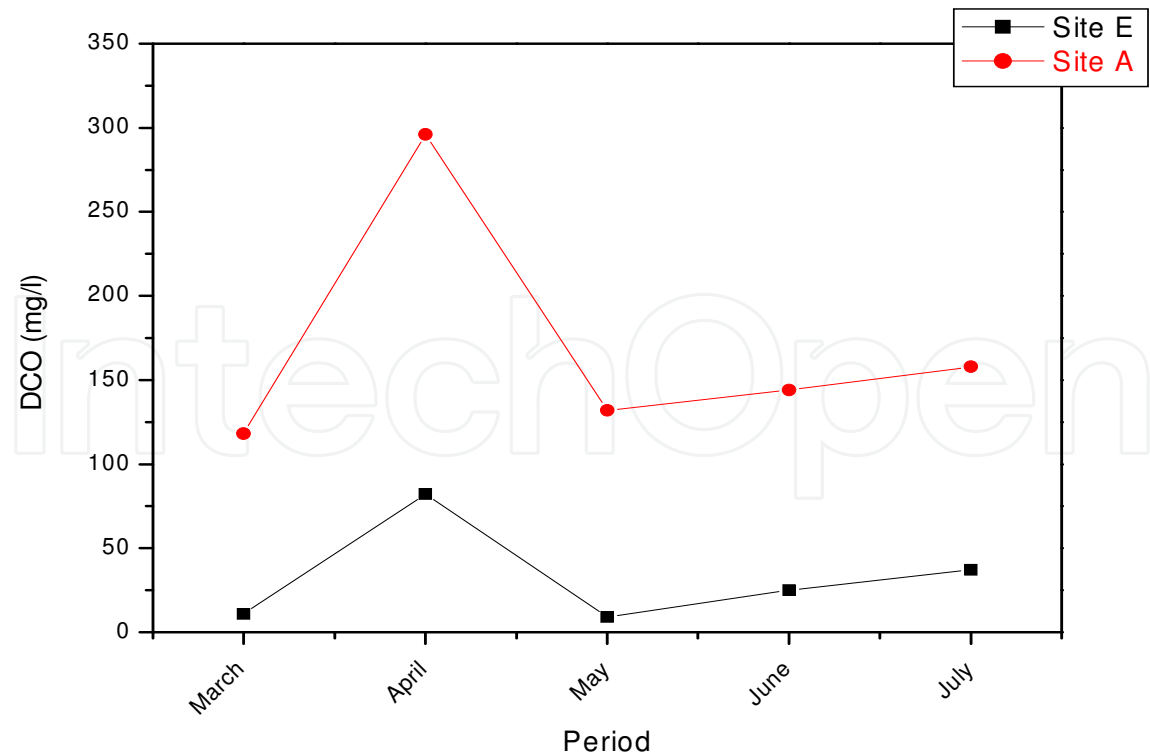


Fig. 6. Variations of chemical oxygen demand before and after the intake of STEP effluent as a function of time.

The biochemical oxygen demand ( $BDO_5$ ) allows the evaluation of the present biodegradable organic matters in water. (Figure 7) showed that the  $BDO_5$  values are lower than the Algerian standards in the site E but exceed them in the site E only in dry period and this is in agreement with the results obtained by Guasmi et Djabri...etc (Guasmi & Djabri, 2006), (Tiri et al. 2007), (Benzha et al. 2005), (Guasmi & Djabri, 2005).

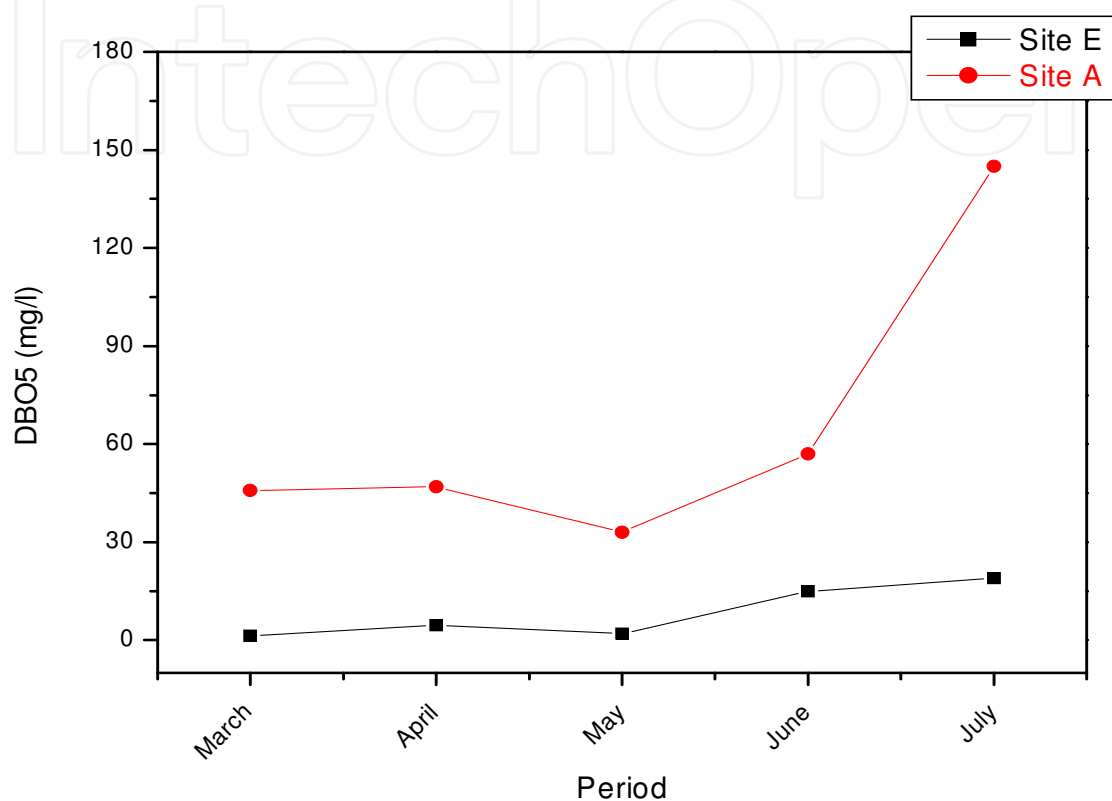


Fig. 7. Variations of biochemical oxygen demand before and after the intake of STEP effluent as a function of time.

### 3.5 Dissolved nitrogen

Human activities and mainly those related to agriculture are a major cause of the presence of nitrates and nitrites in surface water. These two substances are responsible for many problems not only for environment but also for human health. Indeed, although not directly toxic, they participate in eutrophication phenomena of surface water.

The made analyses allow to notice that the rates of nitrates obtained in the two sites are lower than the standards required which are in the order of 50 mg / l (Figures 8, 9 and 10). On the other hand the results concerning nitrites and ammonium ion show superior rates to the standards required (0,1 mg / l) at the site A. Their presence can be explained by an incomplete oxidation of the ammonia water; or a nitrate reduction reaction. This pollution can be caused by intense agricultural activity (the region of study is known for its agricultural vocation) and misuse of chemical fertilizers around the sewage waste water and Oued Medjerda.

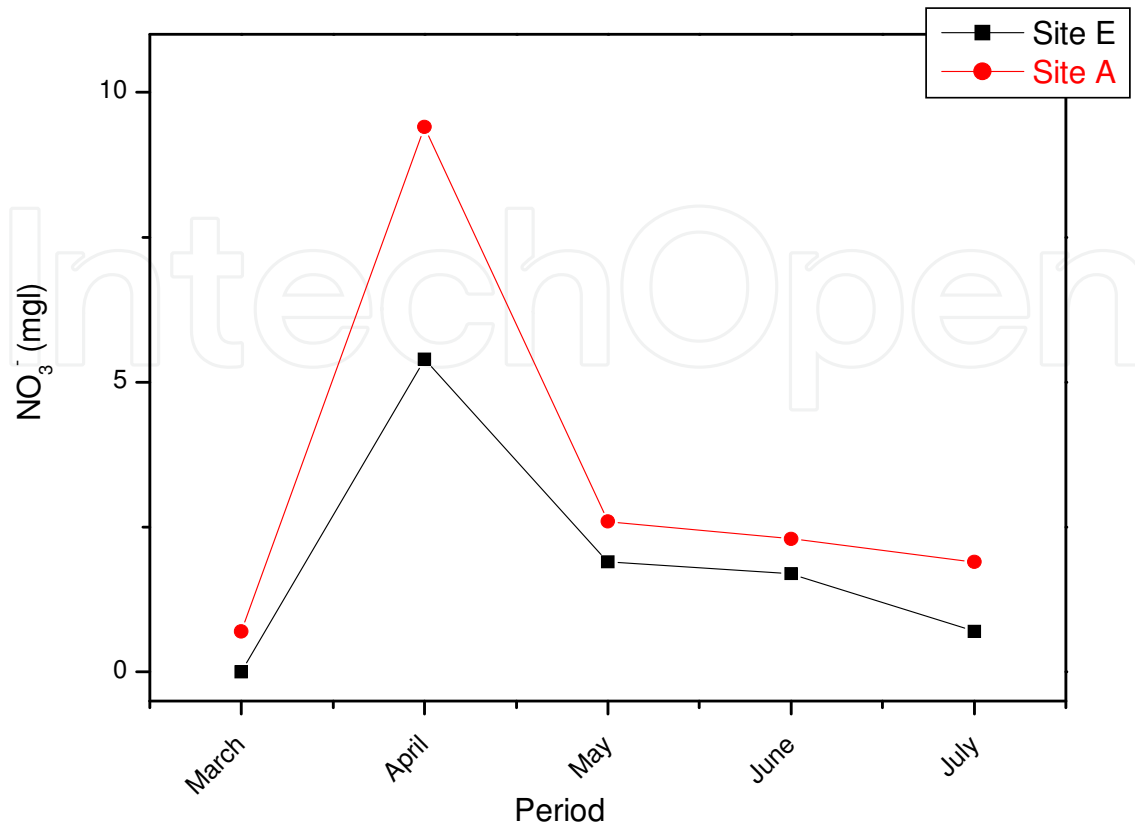


Fig. 8. Nitrates variations before and after the intake of STEP effluent as a function of time.

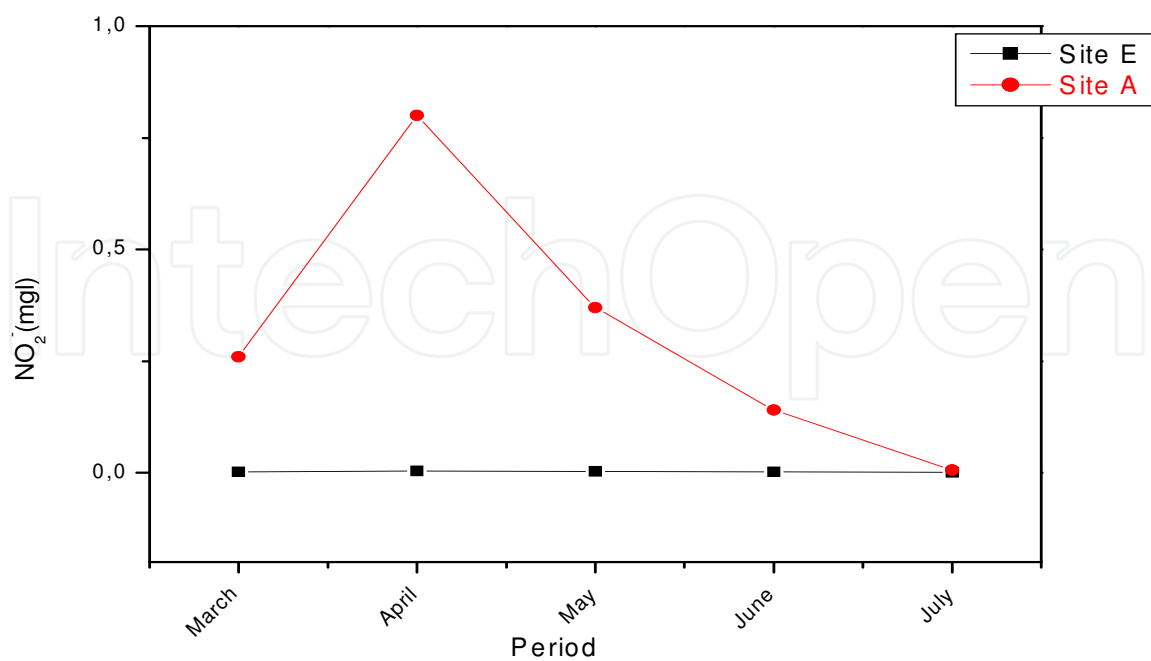


Fig. 9. Nitrites variations before and after the intake of STEP effluent as a function of time.

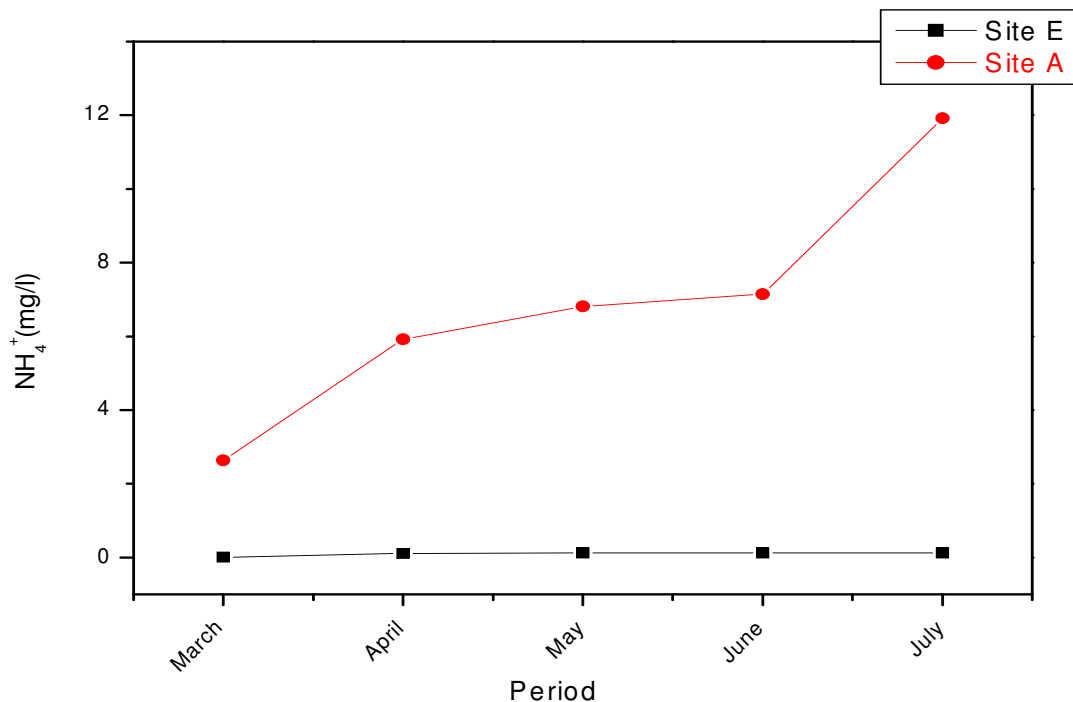


Fig. 10. Ammonium ion variations before and after the intake of STEP effluent as a function of time.

The highest contents of nitrates and nitrites are observed in April and may be explained by the leaching by rainfall observed at this precipitation period. The highest ammonium concentration is observed in July and may be explained by a dilution effect, the water volume flowing in the river being much lower in this dry period (Derradji et al. 2007), (Abulude et al. 2007), (Bouchenafa et al. 2008).

### 3.6 Metals

It has been clearly demonstrated that serious environmental problems were caused when the waste or the treated water may contain high levels of trace elements. These elements are potentially toxic to plants and human beings. However the case of selenium is complex since it is at the same time a trace element; essential to life; and a toxic; and this in a narrow range of concentration.

According to the results obtained (figure 11 and 12) we noticed that lead (Pb) levels varied between 0,01 to 1,44 mg/l in the first site and from 0,04 to 2,08 mg/l in the second one which are within acceptable limit value of 0,03 mg/l. Similarly for cadmium (Cd), its concentration varies from 0,08 to 0,18 mg/l in the site E and from 0,11 to 0,3 mg/l in the site A, whereas the limit value is 0,01 mg/l. While this is not the case for selenium (Se). For which we noted its non-existence.

So we can say that there is a generated pollution by metals such as lead and cadmium. With high levels in the site A and less in the site E. The high content in of metals is probably due to the direct pollution of the rivers by the industrial wastes; atmospheric precipitation involving a certain part of the pollutants present in the atmosphere and in consequence of the streaming of water on the grounds involving accumulated lead or cadmium at surface (Abulude et al. 2007), (Igbinosa & Okoh, 2009).



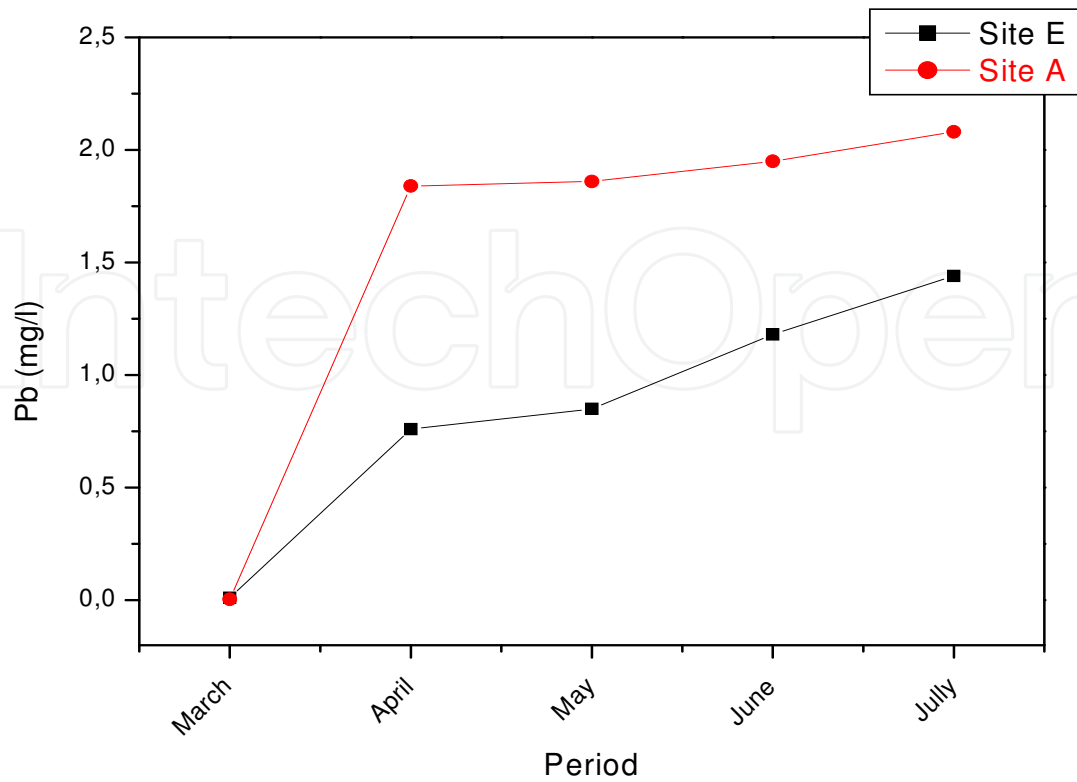


Fig. 11. Lead variations before and after the intake of STEP effluent as a function of time.

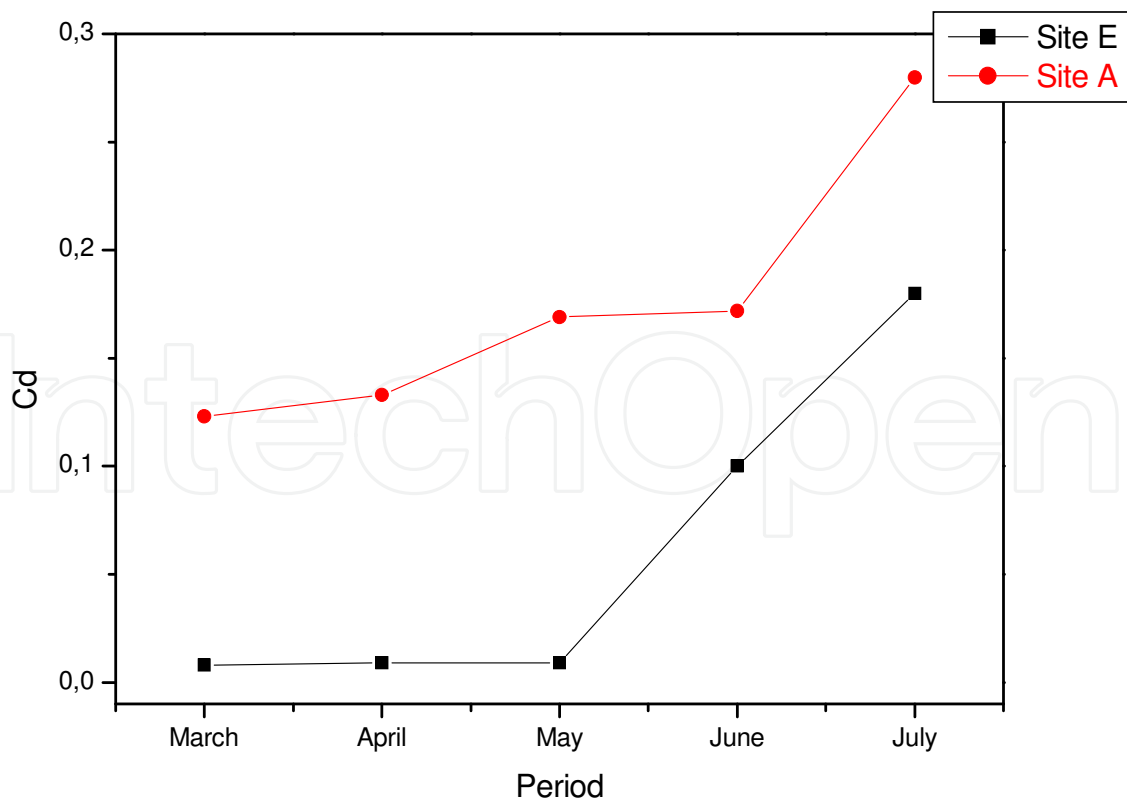


Fig. 12. Cadmium variations before and after the intake of STEP effluent as a function of time.

#### 4. Conclusion

Medjerda is the principal river in the north-east of Algeria. This study examines the impacts of discharges of sewage wastewater (STEP Henencha) on the quality of this river. Monitoring was made upstream and downstream the STEP rejections from March to July 2009. Parameters measured include pH, temperature, total suspended matters, chemical oxygen demand, biological oxygen demand, nitrate, nitrite, ammonium ions and trace elements (cadmium, lead and selenium) using standard methods. Unacceptably, high levels of the assayed parameters were observed downstream the STEP in many cases for chemical oxygen demand (118- 296 mg/l), biological oxygen demand (33- 145 mg/l), nitrite (0,14- 0,68 mg/l), ammonium ions ( 2,64- 11,92 mg/l); lead (0,04- 2,08 mg/l) and cadmium (0,1- 0,2 mg/l) during the study period and outside the compliance levels of Algerian guidelines. We can also conclude that the lowest levels of metal ions were registered during flood periods and this is certainly due to the high dilution facing the river following rainfall. The results obtained confirmed that there was an adverse impact on the physico-chemical characteristics and this implies that the water of this river has a major pollution problem.

#### 5. Abbreviations

STEP Henanacha : Wastewater treatment station of Henanacha

COD: Chemical oxygen demand

BDO<sub>5</sub>: Biological oxygen demand

SM : Suspended matter

NH<sub>4</sub><sup>+</sup>: Ammonium ions

NO<sub>2</sub><sup>-</sup>: Nitrites

NO<sub>3</sub><sup>-</sup>: Nitrates

Pb: Lead.

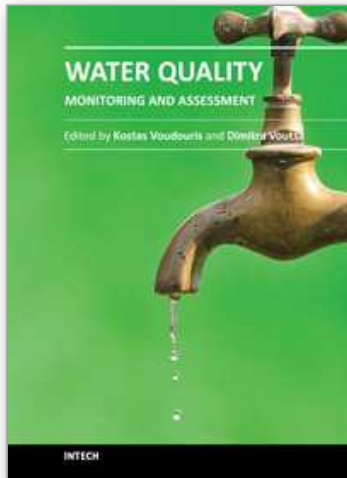
Cd: Cadmium.

Se: Selenium.

#### 6. References

- Abulude, F. O. Obidiran, G. O & Orungbemi, S (2007). Determination of physico-chemical parameter and trace metal contents of drinking water samples in Akure Nigeria, *EJEAF che*, Vol. 6, N<sup>o</sup> 8, pp. 2297-2303
- ANRH: Agence Nationale des ressources hydriques (2003). Page Web. [www.anrh.dz](http://www.anrh.dz).
- Ajayi, O.O., J. Ogun, and I.I. Oguntimehin. (2002). "The Influence of Waste Dumps on Some Underground Water Sources in Warri". *Journal of Science Laboratory Technology International*. VOL.1, N<sup>o</sup>1. In Press.
- Athmani, A. S. (2005). Evaluation de la qualité des eaux de surface, cas du bassin versant Oued Medjerda (Souk Ahras, Algérie), Thèse de Magister, Centre universitaire de Souk Ahras
- Benzha, F. Taoufik, M. Dafir, J.E. Kemmou, S. & Loukili, L (2005). Impact of drainage operation on water quality of Daourat Reservoir, *Rev. Sci.Eau* N<sup>o</sup>18 , pp. 57-74.
- Bouchenafa, N. Abdelkader, D. & Maatoug.,M. (2008). Water pollution of Oued Mina under catchments, in Algerian Tiaret region. *Ass. Univ. Bull. Environ. Res.* Vol.11 N<sup>o</sup>2, pp. 43-51.

- Botton, B. Bretton, A. Fevre, M. Gauthier, S. Guy, Ph. Larpent, JP. Reymond, P. Sanglier, J.J. Vayssier, Y.& Veau, P. (1999). Moisissures utiles et nuisibles : importance industrielle. Collection Biotechnologiques. Ed Masson, p p. 97-213-216-219.
- Bouchentouf, K. (1994). Les bilans d'eau vus à travers les paramètres physico-chimiques et hydrodynamiques: cas du bassin versant de la haute Mina (Tiaret, Algérie), Thèse de Magister. Centre universitaire de Chelef, Algeria.
- Derradji, F. (2004). Identification quantitative et qualitative des ressources en eau dans la région d'Annaba (El Tarf, Algérie). Doctorat des sciences, Université de Annaba, Algérie
- Derradji, F. Ben snoubra, H. Kherici, N. Romeo, M. Karuba, R. (2007). Impact de la pollution organique sur la qualité des eaux superficielles dans le nord est algérien, *Sécheresse* Vol.18, N°1, pp. 23-27
- Document inédit: Agence National des barrages, (2001).Algérie
- Elkenedj, Y.B. (2009). Etude de l'effet de l'aération naturelle sur la pollution résiduaire des eaux épurées de la zone de l'Hennetcha W. Souk Haras (N.E.Algérien), Thèse de Magister, Université Badji Mokhtar Annaba, Algérie
- Guasmi, I. (2004). Dégradation de la qualité de l'eau dans le bassin versant de l'Oued Medjerda (Souk Ahras, Algérie), Thèse de Magister, Université de Annaba, Algérie
- Guasmi, I. Djabri, L (2005). L'évolution des nitrates, nitrites et ammonium dans les eaux de surface de l'oued Medjerda (Souk Ahras). 3<sup>ème</sup> journée des géosciences de l'environnement, El Jadida les 8, 9 et 10 juin. Tunis
- Guasmi, I.& Djabri, L. (2006). Pollution des eaux de l'Oued Medjerda par les nutriments. *Larhyss Journal* N°5,pp. 113-119.
- Igbinosa, E.O., Okoh, A.I. (2009). Impact of discharge wastewater effluents on the physico-chemical qualities of a receiving watershed in a typical rural community. *Int. J. Environ. Sci. Tech.*, Vol.6, N° 2, pp.175-182, Spring 2009, ISSN: 1735-1472
- Louis, D. (1956). Etude géologique des monts de la haute Medjerda, Thèse SC. Science de la carte géologique de l'Algérie, Algérie
- Lefort, R. (2006). "Down to the Last Drop". *UNESCO Sources*. 84.
- Meinck, F. Stoof, H. Kohlschutter. (1977). H. Les eaux résiduaires industrielles, 2<sup>ème</sup> Ed. Masson, Paris, p 863.
- Larpent, J.P & Gourargaud. (1997). M. Mémento technique de microbiologie (3<sup>ème</sup> édition. Lavoisier Tech & Doc, pp173-217.
- Phiri, O., P. Mumba, B.H.Z. Moyo, and W. Kadewa. (2005). "Assessment of the Impact of Industrial Effluents on Water Quality of Receiving Rivers in Urban Areas of Malawi". *Int. J. Environ. Sci. Tech.*. Vol.2, N° 3, pp:237-244.
- Tiri, A. Boudoukha, A. Bouguerne, A. & Lahbari, N (2007). Influence of the industrial and urban waste water on the quality of water (Case of Koudiat Medouar Watershed), *J. Eng. Applied*, Vol.2, N° 11, pp. 1592-159.



## **Water Quality Monitoring and Assessment**

Edited by Dr. Voudouris

ISBN 978-953-51-0486-5

Hard cover, 602 pages

**Publisher** InTech

**Published online** 05, April, 2012

**Published in print edition** April, 2012

The book attempts to covers the main fields of water quality issues presenting case studies in various countries concerning the physicochemical characteristics of surface and groundwaters and possible pollution sources as well as methods and tools for the evaluation of water quality status. This book is divided into two sections: Statistical Analysis of Water Quality Data; Water Quality Monitoring Studies.

### **How to reference**

In order to correctly reference this scholarly work, feel free to copy and paste the following:

A. Nait Merzoug and H. Merazig (2012). Water Pollution of Oued Medjerda in Algerian Souk Ahras Region, Water Quality Monitoring and Assessment, Dr. Voudouris (Ed.), ISBN: 978-953-51-0486-5, InTech, Available from: <http://www.intechopen.com/books/water-quality-monitoring-and-assessment/water-pollution-of-oued-medjerda-in-algerian-souk-ahras-region>

**INTECH**  
open science | open minds

### **InTech Europe**

University Campus STeP Ri  
Slavka Krautzeka 83/A  
51000 Rijeka, Croatia  
Phone: +385 (51) 770 447  
Fax: +385 (51) 686 166  
[www.intechopen.com](http://www.intechopen.com)

### **InTech China**

Unit 405, Office Block, Hotel Equatorial Shanghai  
No.65, Yan An Road (West), Shanghai, 200040, China  
中国上海市延安西路65号上海国际贵都大饭店办公楼405单元  
Phone: +86-21-62489820  
Fax: +86-21-62489821



© 2012 The Author(s). Licensee IntechOpen. This is an open access article distributed under the terms of the [Creative Commons Attribution 3.0 License](#), which permits unrestricted use, distribution, and reproduction in any medium, provided the original work is properly cited.

IntechOpen

IntechOpen