

We are IntechOpen, the world's leading publisher of Open Access books Built by scientists, for scientists

4,800

Open access books available

122,000

International authors and editors

135M

Downloads

Our authors are among the

154

Countries delivered to

TOP 1%

most cited scientists

12.2%

Contributors from top 500 universities



WEB OF SCIENCE™

Selection of our books indexed in the Book Citation Index
in Web of Science™ Core Collection (BKCI)

Interested in publishing with us?
Contact book.department@intechopen.com

Numbers displayed above are based on latest data collected.

For more information visit www.intechopen.com



Entropic Image Restoration as a Dynamic System with Entropy Operator

Yuri S. Popkov
*Institute for Systems Analysis
 Russia*

1. Introduction

Entropy and the classical variational principle of the statistical physics are the effective tools for modeling and solving a lot of applied problems. There are many definitions of "entropy" functions. The book by Kapur (1989) contains some of them. The classical definition of the *physical* entropy was introduced by L. Boltzmann (1871) and was developed for Fermi- and Einstein-statistics Landau & Livshitz (1964). Notion of entropy was introduced for para-statistics that have position between Fermi- and Einstein-statistics (Ohnuki & Kamefuchi (1982), Dorofeev et al. (2008)).

Variation principle of entropy maximization turned out very useful for information theory, the base of which connected with Shannon (Shannon (1948), Kullback & Leibler (1951)). This direction is developed in the book Popkov (1995), where introduced generalized information entropies by Fermi-Dirac and Bose-Einstein (entropy with parameters). Entropy maximization are applied to image reconstruction from projections Byrne (1993). A large number of applications of the entropy maximization principle is contained in Fang et al. (1997), Maslov (2003).

In these papers the entropy conditional maximization problems with linear constraints equalities were considered only. However there are many problems of entropy maximization with feasible set that is described by a system of inequalities and not only a linear one.

In this paper we design the models of the entropy image reconstruction from projections (EIRP) as the entropy linear (ELP) and quadratic maximization problems (EQP), where the feasible sets are described by the system of the equalities and inequalities of appropriate types (linear and quadratic one).

The regular procedure for design of multiplicative algorithms with p -active variables with respect to dual variables and to mixed (dual and primal) variables proposed for the problem solving. The choice of the active variables is implemented by feedback control with respect to the current state of the iterative process.

The problem of reconstruction of images of the objects distorted by noises and hidden from direct observation arises in the different fields. One of the trends in the solution of the problem is based on the tomographic investigation of an object, i.e., the construction of its layer-by-layer projections. The projections can be formed as external irradiation sources (X-ray, ultrasonic sources) and internal ones (positron emission) as also with the aid of

their combination (nuclear magnetic resonance) (Herman (1980), Dhawan (2003)). In Popkov (1997) is shown that a distribution of the absorbed photons in slab maximizes the generalized entropy by Fermi-Dirac under the set of projections. A generalization consists in the inclusion of an additional parameters in entropy function, through which it is possible to take into account prior information on the object.

Our contribution to the theory and applications of the EIRP consists in three parts.

The first contribution is the general entropy models in the terms of entropy linear programming (ELP) or entropy quadratic programming (EQP) that underlie in the *static* procedures of computer tomography. At the beginning of the static procedure, it is occurred an accumulation of a complete set of the projections by means of the external irradiation of the object. Then it is solved the ELP or EQP. As a result, for the prescribed prior image, we obtain an entropy-optimal restored image, which we will be called a *posterior image*.

It calls for a rather high irradiation intensity so as to afford a sufficient noise immunity of a reconstructed image. However, for some classes of tomographic investigations a high irradiation intensity is extremely undesirable.

Multiplicative procedures represent to the ELP and EQP solving. Apparently, the first general approach for synthesis of such procedures was proposed in (Dubov et al. (1983)). Simple multiplicative algorithm was applied to minimization of strictly convex functions on nonnegative orthant. Later, the multiplicative algorithms with respect to dual variables are used for solving conditional minimization and mathematical programming problems (Aliiev et al. (1985), Popkov (1988), Popkov (1995a)). Also, the multiplicative algorithms are used for solving nonlinear equations (Popkov (1996)). The multiplicative procedures for finding nonnegative solutions of the minimization problems over nonnegative optant were proposed again in the paper (Iusem et al. (1996)).

Some types of the multiplicative algorithms are derived from approach based on the Bregman function and generalized projections with Shannon's entropy. In this case we obtain so-called *row-action algorithms*, iterations of which have a multiplicative form. The algorithms of this type was developed and modified (Herman (1982), Censor (1981), Censor (1987), Byrne (1996), Censor & Zenios (1997)).

It is necessary to note that in the most cited works the multiplicative algorithms are applied to the problems of entropy maximization with linear constraints equalities. We consider the ELP problem, where a feasible set is described by the system of the linear equalities and inequalities. The regular procedure for design of multiplicative algorithms with *p-active* variables is proposed for solving of this problem. On the basis of the procedure above we synthesize the algorithms with respect to dual variables and to mixed (dual and primal) variables simultaneously. The choice of the active variables is implemented by feedback control with respect to the current state of the iterative process. Convergence study of the multiplicative algorithms is based on the continuous analogues of the algorithms and equivalence of the iterative sequences generated by the dual and mixed type algorithms. (Popkov (2006)).

Our second contribution is connected with a *basically another approach* to the EIRP. It is a *dynamic* procedure consisting in the sequential refinement in time of the image synthesized. The suggested procedures do not require a high irradiation intensity and display a high noise stability.

On the each step t of the dynamic procedure t -posterior image is build up as a solution of the ELP or EQP, using the current t -prior image and the current projection. The $(t - s), (t - s + 1), \dots, t$ -posterior images take part in formation of $(t+1)$ -prior image. So the dynamic procedures are procedures with feedback.

The dynamic procedures are closed in the sense that at each stage for the current t -prior image and the t -projection, the entropy-optimal t -posterior image is built up, by which the $(t+1)$ -prior image is corrected.

We consider a diverse structures of the dynamic procedures with feedback and investigate their properties. The example of application of these procedures is presented.

It is shown that the proposed dynamic procedures of the EIRP represent the dynamic systems with entropy operator (DSEO). And our third contribution is an elements of the qualitative analysis of the DSEO. We consider the properties of the entropy operator (boundedness, Lipschitz constant).

2. Mathematical model of the static EIRP procedure

Consider a common diagram of monochrome tomographic investigation (fig. 1), where external beams of photons S irradiate the flat object in the direction AB . The object is monochromatic, and is described by the two-dimensional function of optical density $\psi(x, y)$ in the system of Cartesian coordinates. Positive values of the density function are limited:

$$0 < a \leq \psi(x, y) \leq b < 1. \quad (2.1)$$

The intensity of irradiation (projection) w at the point B of the detector ID (fig. 1) is related by the Radon transformation:

$$w(B) = \exp \left(- \int_{l \in AB} \psi(x, y) dl \right), \quad (2.2)$$

where the integration is realized along straight AB .

It is common to manipulate the digital representation of the density function $\psi(l, s)$, ($l = \overline{1, L}$, $s = \overline{1, S}$). Introduce $i = S(l - 1) + s$, $i = \overline{1, m}$, $m = LS$, and martix $\Psi = [\psi(l, s) | l = \overline{1, L}, s = \overline{1, S}]$ as a vector $\bar{\psi} = \{\psi_1, \dots, \psi_m\}$.

The tomographic procedure form some feasible sets for the vector $\bar{\psi}$:

$$\mathcal{L} = \{\bar{\psi} : \mathbf{L}(\bar{\psi}) \leq \mathbf{g}\}, \quad (2.3)$$

where $\mathbf{L}(\bar{\psi})$ is the h -vector function, and \mathbf{g} is the h -vector. We consider the quadratic approximation of the function L :

$$\mathbf{L}(\bar{\psi}) = L \bar{\psi} + \mathbf{Q}(\bar{\psi}), \quad (2.4)$$

where L is the $(h \times m)$ -matrix with nonnegative elements $l_{ki} \geq 0$; $\mathbf{Q}(\bar{\psi})$ is the h -vector of the quadratic forms:

$$\mathbf{Q}(\bar{\psi}) = \bar{\psi}' Q^k \bar{\psi}, \quad (2.5)$$

where Q^k is the symmetric $(m \times m)$ -matrix with elements $q_{ij}^k \geq 0$.

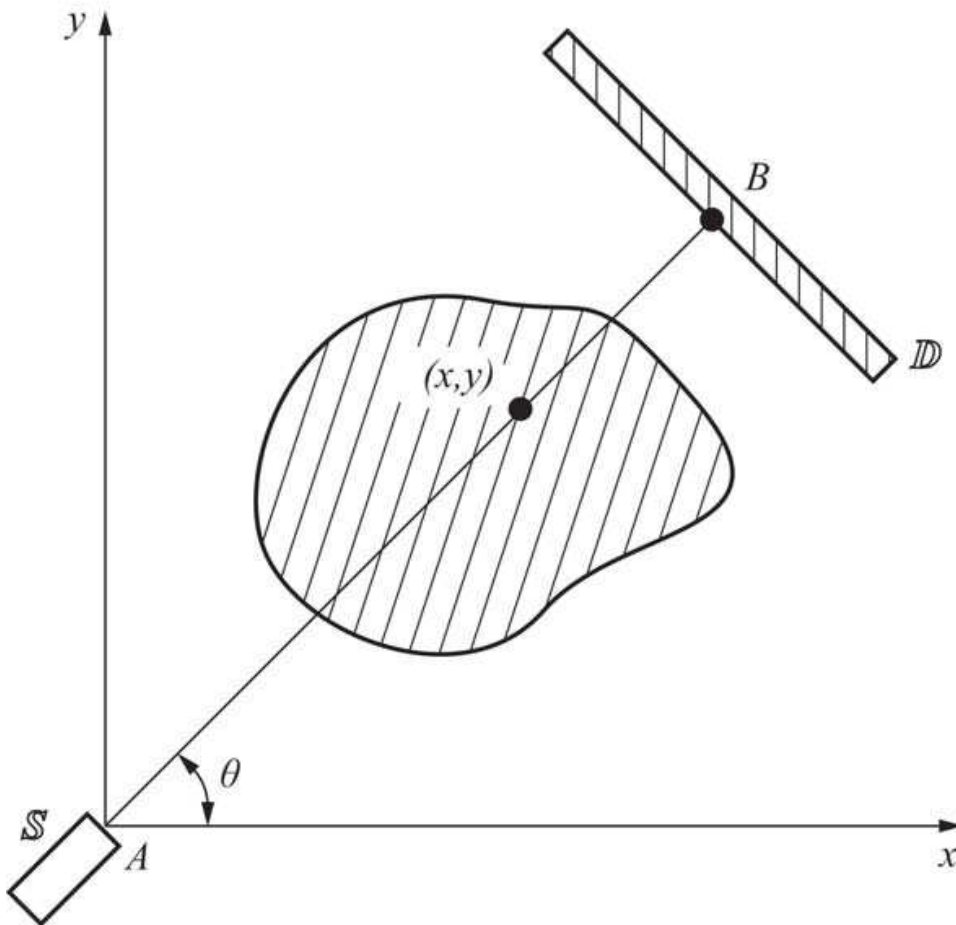


Fig. 1. Tomography scheme

Now it is returned to the projection function (2.2), and we use its quadratic approximation:

$$\mathbf{w}(B) \simeq T \bar{\psi} + \mathbf{F}(\bar{\psi}) = \mathbf{u}, \quad (2.6)$$

where: $\mathbf{w}(B) = \{w(B_1), \dots, w(B_n)\}$, T is the $(n \times m)$ -matrix with elements $t_{ki} \geq 0$; $\mathbf{F}(\bar{\psi})$ is the n -vector function with components $F^r \bar{\psi} = \bar{\psi}^t F^r \bar{\psi}$, where F^r is the symmetric $(m \times m)$ -matrix with elements $f_{ij}^r \geq 0$.

Any tomographic investigation occurs in the presence of noises. So the n -projections vector \mathbf{u} is a random vector with independent components u_n , $n = \overline{1, m}$, $\mathcal{M} \mathbf{u} = \mathbf{u}^0 \geq 0$, $\mathcal{M} (\mathbf{u} - \mathbf{u}^0)^2 = \text{diag} [\sigma^2]$, where \mathbf{u}^0 is the ideal projections vector (without noise), and σ^2 is the dispersion of the noise. It is assumed that the dispersions of the noise components are equal.

Thus, the feasible set $\mathcal{D}(\bar{\psi})$ is described the following expressions:

- the projections are

$$T \bar{\psi} + \mathbf{F}(\bar{\psi}) = \mathbf{u}, \quad (2.7)$$

- the possible set of the density vectors is

$$L \bar{\psi} + \mathbf{Q}(\bar{\psi}) \leq \mathbf{g}. \quad (2.8)$$

The class \mathcal{P} of the density vectors is characterized by the following inequalities:

$$\mathbf{0} < \mathbf{a} \leq \bar{\psi} \leq \mathbf{b} < \mathbf{1}. \quad (2.9)$$

It is assumed that among dimensions of the density vectors (m), the projection vectors (n), and the possible set (h) the following inequality exists:

$$m > n + h. \quad (2.10)$$

It is assumed that the feasible set is nonempty for the class (2.9), and there exists a set of the density vectors $\bar{\psi}$ (2.9), that belong to the feasible set \mathcal{D} (2.7, 2.8).

We will use the variation principle of the EIRP Popkov (1997), according to which the realizable density vector (function) $\bar{\psi}$ maximizes the entropy (the generalized information entropy by Fermi-Dirac):

$$H(\bar{\psi} | \mathbf{a}, \mathbf{b}, \mathbf{E}) = -[\bar{\psi} - \mathbf{a}]' \ln \frac{\bar{\psi} - \mathbf{a}}{\mathbf{E}} - [\mathbf{b} - \bar{\psi}]' \ln[\mathbf{b} - \bar{\psi}], \quad (2.11)$$

where:

- $\mathbf{E} = \{E_1, \dots, E_m\}$ is the m -vector characterizing the prior image (prior probabilities of photon absorption in the object);

- $-\ln[(\bar{\psi} - \mathbf{a}) / \mathbf{E}]$ is the vector with components $\ln[(\psi_i - a_i) / E_i]$;

- $-\ln[\mathbf{b} - \bar{\psi}]$ is the vector with components $\ln(b_i - \psi_i)$.

If there is information about more or less "grey" object then we can use the next entropy function (the generalized information entropy by Boltzmann):

$$H(\bar{\psi} | \mathbf{E}) = -\bar{\psi}' \ln \frac{\bar{\psi}}{e\mathbf{E}}, \quad (2.12)$$

where $e = 2,73$.

Thus, the problem of the EIRP can be formulated in the next form:

$$H(\bar{\psi} | \mathbf{a}, \mathbf{b}, \mathbf{E}) \Rightarrow \max_{\bar{\psi}} \quad \bar{\psi} \in \mathcal{D}(\bar{\psi}) \cap \mathcal{P}, \quad (2.13)$$

where the feasible set $\mathcal{D}(\bar{\psi})$ is described by the expressions (2.7 - 2.8) and the class \mathcal{P} is described by the inequalities (2.9). This problem is related to the EQP or the ELP depend on the feasible set construction.

3. Statements and algorithms for the ELP and the EQP

Transform the problem (2.13) to the general form, for that introduce the following designations:

$$\begin{aligned} \mathbf{x} &= \bar{\psi} - \mathbf{a}, \quad \tilde{\mathbf{b}} = \mathbf{b} - \mathbf{a}, \\ \tilde{\mathbf{g}} &= \mathbf{g} - \{\mathbf{a}' Q^k \mathbf{a}, k = \overline{1, h}\} - L\mathbf{a}, \\ \tilde{\mathbf{u}} &= \mathbf{u} - \{\mathbf{a}' F^r \mathbf{a}, r = \overline{1, n}\} - T\mathbf{a}. \end{aligned} \quad (3.1)$$

Then the problem (2.13) takes a form:

$$H(\mathbf{x}, \tilde{\mathbf{b}}, \mathbf{E}) = -\mathbf{x}' \ln \frac{\mathbf{x}}{\mathbf{E}} - [\tilde{\mathbf{b}} - \mathbf{x}]' \ln[\tilde{\mathbf{b}} - \mathbf{x}] \Rightarrow \max, \quad (3.2)$$

under the following constraints:

- the projections

$$\tilde{T}\mathbf{x} + \{\mathbf{x}' F^r \mathbf{x}, r = \overline{1, n}\} = \tilde{\mathbf{u}}, \quad (3.3)$$

- the possible set

$$\tilde{L}\mathbf{x} + \{\mathbf{x}' Q^k \mathbf{x}, k = \overline{1, h}\} \leq \tilde{\mathbf{g}}, \quad (3.4)$$

where

$$\begin{aligned} \tilde{T} &= T + A_F, & A_F &= 2[\mathbf{a}' F^r, r = \overline{1, n}], \\ \tilde{L} &= L + A_Q, & A_Q &= 2[\mathbf{a}' Q^k, k = \overline{1, h}] \end{aligned} \quad (3.5)$$

Remark that the constraints (2.9) are absent in the problem (3.2, 3.4), as they are included to the goal function.

3.1 The ELP problem

1. Optimality conditions. The feasible set in the ELP problem is described by the next expressions:

$$T\mathbf{x} = \hat{\mathbf{u}}, \quad L\mathbf{x} \leq \hat{\mathbf{g}}, \quad (3.6)$$

where

$$\hat{\mathbf{u}} = \mathbf{u} - T\mathbf{a}, \quad \hat{\mathbf{g}} = \mathbf{g} - L\mathbf{a}. \quad (3.7)$$

Consider the Lagrange function for the ELP (3.2, 3.6):

$$L(\mathbf{x}, \bar{\lambda}, \bar{\mu}) = H(\mathbf{x}, \tilde{\mathbf{b}}, \mathbf{E}) + [\hat{\mathbf{u}} - T\mathbf{x}]' \bar{\lambda} + [\hat{\mathbf{g}} - L\mathbf{x}]' \bar{\mu}, \quad (3.8)$$

where $\bar{\lambda}, \bar{\mu}$ are the Lagrange multipliers for constraints-equalities and -inequalities (3.6) correspondingly. Assume that the Slater conditions are valid, i.e., there exists a vector \mathbf{x}^0 such that $L\mathbf{x}^0 < \hat{\mathbf{g}}, T\mathbf{x}^0 = \hat{\mathbf{u}}$.

According to Polyak (1987) the following expressions give the necessary and sufficient conditions optimality of the triple $(\mathbf{x}, \bar{\lambda}, \bar{\mu})$ for the problem (3.2 - 3.5):

$$\nabla_{\mathbf{x}} L = 0, \quad \nabla_{\bar{\lambda}} L = 0, \quad \nabla_{\bar{\mu}} L \geq 0, \quad (3.9)$$

$$\bar{\mu} \otimes \nabla_{\bar{\mu}} L = 0, \quad \bar{\mu} \geq 0, \quad (3.10)$$

where \otimes designates a coordinate-wise multiplication.

The following designations are used in these expressions:

$$\nabla_{\mathbf{x}} L = \frac{\partial H}{\partial \mathbf{x}} - T' \bar{\lambda} - L' \bar{\mu}, \quad (3.11)$$

$$\nabla_{\bar{\lambda}} L = \hat{\mathbf{u}} - T\mathbf{x}, \quad (3.12)$$

$$\nabla_{\bar{\mu}} L = \hat{\mathbf{g}} - L\mathbf{x}, \quad (3.13)$$

$$(3.14)$$

From the optimality conditions (3.9) we have:

$$\begin{aligned}
 x_i(\mathbf{z}, \bar{\mu}) &= y_i(\mathbf{z}) d_i(\bar{\mu}), \\
 y_i(\mathbf{z}) &= \tilde{b}_i \left[1 + \frac{1}{E_i} \prod_{j=1}^n z_j^{t_{ji}} \right]^{-1}, \\
 d_i(\bar{\mu}) &= \tilde{b}_i \left[1 + \frac{1}{E_i} \exp \left(\sum_{k=1}^h \mu_k l_{ki} \right) \right]^{-1}, \\
 \tilde{b}_i &= \sqrt{b_i}, \quad i = \overline{1, m}.
 \end{aligned}
 \tag{3.15}$$

The Lagrange multipliers $\bar{\mu}$ and the exponential Lagrange multipliers $\mathbf{z} = \exp(\bar{\lambda})$ are defined by the next equations and inequalities:

$$\begin{aligned}
 \Theta_j(\mathbf{z}, \bar{\mu}) &= \frac{1}{u_j} \sum_{i=1}^m t_{ji} y_i(\mathbf{z}) d_i(\bar{\mu}) = 1, \quad j = \overline{1, n}, \\
 \Gamma_k(\mathbf{z}, \bar{\mu}) &= g_k - \sum_{i=1}^m l_{ki} y_i(\mathbf{z}) d_i(\bar{\mu}) \geq 0, \\
 \mu_k \Gamma_k(\mathbf{z}, \bar{\mu}) &= 0, \quad \mu_k \geq 0, \quad k = \overline{1, h}.
 \end{aligned}
 \tag{3.16}$$

2. Multiplicative algorithms with $(p+q)$ -active variables An active variables are vary at the sth iteration, and the remaining variables are not vary. We will consider multiplicative algorithms with respect to dual variables $(\mathbf{z}, \bar{\mu})$ for solution of the system (3.16). At the each step of iteration it will be used p components of the vector \mathbf{z} , and q components of the vector $\bar{\mu}$. The number of the active variables is valid to the next relation:

$$p + q \leq n + h. \tag{3.17}$$

The multiplicative algorithms with $p+q$ -active variables can be represented in the following form:

(a) *initial step*

$$\mathbf{z}^0 \geq 0, \quad \bar{\mu}^0 \geq 0;$$

(b) *iterative step*

$$\begin{aligned}
 z_{j_1(s)}^{s+1} &= z_{j_1(s)}^s \Theta_{j_1(s)}^\gamma(\mathbf{z}^s, \bar{\mu}^s), \\
 \dots &\dots \dots \dots, \\
 z_{j_p(s)}^{s+1} &= z_{j_p(s)}^s \Theta_{j_p(s)}^\gamma(\mathbf{z}^s, \bar{\mu}^s), \\
 z_j^{s+1} &= z_j^s, \quad j = \overline{1, n}, \quad j \neq j_1(s), \dots, j_p(s);
 \end{aligned}
 \tag{3.18}$$

$$\begin{aligned}
 \mu_{t_1(s)}^{s+1} &= \mu_{t_1(s)}^s [1 - \alpha \Gamma_{t_1(s)}(\mathbf{z}^s, \bar{\mu}^s)], \\
 \dots &\dots \dots \dots, \\
 \mu_{t_q(s)}^{s+1} &= \mu_{t_q(s)}^s [1 - \alpha \Gamma_{t_q(s)}(\mathbf{z}^s, \bar{\mu}^s)], \\
 \mu_t^{s+1} &= \mu_t^s, \quad t = \overline{1, h}, \quad t \neq t_1(s), \dots, t_q(s);
 \end{aligned}
 \tag{3.19}$$

The parameters γ, α are the step coefficients. In Popkov (2006) the multiplicative algorithms in respect to the mixed type (prime and dual variables) are introduced, and the method of the convergence of these algorithms are proposed.

3.2 The EQL problem

1. Optimality condition. Consider the EQL problem (3.2 - 3.5), and introduce the Lagrange function:

$$L(\mathbf{x}, \bar{\lambda}, \bar{\mu}) = H(\mathbf{x}, \tilde{\mathbf{b}}, \mathbf{E}) + \bar{\lambda}' [\tilde{\mathbf{u}} - \tilde{\mathbf{T}}\mathbf{x} - \{\mathbf{x}' F^r \mathbf{x}, r = \overline{1, n}\}] + \bar{\mu}' [\tilde{\mathbf{g}} - \tilde{\mathbf{L}}\mathbf{x} - \{\mathbf{x}' Q^k \mathbf{x}, k = \overline{1, h}\}]. \quad (3.20)$$

According to the optimality conditions (3.9, 3.10) we have:

$$\begin{aligned} \nabla_{\mathbf{x}} L &= \frac{\partial H}{\partial \mathbf{x}} - [T + \Phi(\mathbf{x})]' \bar{\lambda} - [L + \Pi(\mathbf{x})]' \bar{\mu} = 0, \\ \nabla_{\bar{\lambda}} L &= \tilde{\mathbf{u}} - T\mathbf{x} - \{\mathbf{x}' F^r \mathbf{x}, r = \overline{1, n}\}, \\ \nabla_{\bar{\mu}} L &= \tilde{\mathbf{g}} - L\mathbf{x} - \{\mathbf{x}' Q^k \mathbf{x}, k = \overline{1, h}\} \geq 0, \\ \bar{\mu} \otimes \nabla_{\bar{\mu}} L &= 0, \quad \mathbf{x} \geq 0, \quad \bar{\mu} \geq 0, \end{aligned} \quad (3.21)$$

where

$$\begin{aligned} \Phi(\mathbf{x}) &= [\varphi_{ri}(\mathbf{x}) \mid r = \overline{1, n}, i = \overline{1, m}], & \varphi_{ri}(\mathbf{x}) &= 2 \sum_{j=1}^m x_j f_{ij}^r, \\ \Pi(\mathbf{x}) &= [\pi_{ki}(\mathbf{x}) \mid k = \overline{1, h}, i = \overline{1, m}], & \pi_{kj}(\mathbf{x}) &= 2 \sum_{i=1}^m x_i q_{ij}^k. \end{aligned}$$

Transform these equations and inequalities to the conventional form in which all variables are nonnegative one:

$$\begin{aligned} \frac{A_j(\mathbf{x}, \mathbf{z}, \bar{\mu}) E_j}{x_j [1 + A_j(\mathbf{x}, \mathbf{z}, \bar{\mu}) E_j]} &= \mathcal{A}_j(\mathbf{x}, \mathbf{z}, \bar{\mu}) = 1, \quad j = \overline{1, m}, \\ \frac{1}{\bar{u}_r} \left(\sum_{i=1}^m \tilde{t}_{ri} x_i + \sum_{i,l=1}^m x_i x_l f_{il}^r \right) &= \mathcal{B}_r(\mathbf{x}) = 1, \quad r = \overline{1, n}, \\ \frac{\mu_k}{\tilde{g}_k} \left(\sum_{i=1}^m \tilde{l}_{ki} x_i + \sum_{i,l=1}^m x_i x_l q_{il}^k \right) &= \mathcal{C}_k(\mathbf{x}) = 0, \quad k = \overline{1, h}, \\ \mathbf{x} \geq 0, \quad \mathbf{z} = \exp(-\bar{\lambda}) \geq 0, \quad \bar{\mu} \geq 0, \end{aligned} \quad (3.22)$$

where

$$\begin{aligned} A_j(\mathbf{x}, \mathbf{z}, \bar{\mu}) &= \prod_{r=1}^n z_r^{\tilde{t}_{rj}} \prod_{p=1}^n z_r^{\varphi_{rj}(\mathbf{x})} \times \\ &\times \exp \left(- \sum_{k=1}^h \mu_k \tilde{l}_{kj} \right) \exp \left(- \sum_{k=1}^h \mu_k \sum_{l=1}^m x_l q_{jl}^k \right). \end{aligned} \quad (3.23)$$

2. Multiplicative algorithms of the mixed type with $(p+q+w)$ -active variables. We use p active prime \mathbf{x} variables, q active dual variables \mathbf{z} for the constraints-equalities, and w active dual $\bar{\mu}$ variables for the the constraints-inequalities. The algorithm takes a form:

(a) *initial step*

$$\mathbf{x}^0 \geq 0, \quad \mathbf{z}^0 \geq 0, \quad \bar{\mu}^0 \geq 0;$$

(b) *iterative step*

$$\begin{aligned} x_{j_1(s)}^{s+1} &= x_{j_1(s)}^s \mathcal{A}_{j_1(s)}^\beta(\mathbf{x}^s, \mathbf{z}^s, \bar{\mu}^s), \\ \dots & \dots \dots \dots, \\ x_{j_p(s)}^{s+1} &= x_{j_p(s)}^s \mathcal{A}_{j_p(s)}^\beta(\mathbf{x}^s, \mathbf{z}^s, \bar{\mu}^s), \\ x_j^{s+1} &= x_j^s, \quad j = \overline{1, m}, \quad j \neq j_1(s), \dots, j_p(s); \end{aligned} \tag{3.24}$$

$$\begin{aligned} z_{t_1(s)}^{s+1} &= z_{t_1(s)}^s \mathcal{B}_{t_1}^\gamma(\mathbf{x}^s), \\ \dots & \dots \dots \dots, \\ z_{t_q(s)}^{s+1} &= z_{t_q(s)}^s \mathcal{B}_{t_q}^\gamma(\mathbf{x}^s), \\ z_t^{s+1} &= z_t^s, \quad t = \overline{1, n}, \quad t \neq t_1(s), \dots, t_q(s); \end{aligned} \tag{3.25}$$

$$\begin{aligned} \mu_{k_1(s)}^{s+1} &= \mu_{k_1(s)}^s [1 - \alpha \mathcal{C}_{k_1}(\mathbf{x}^s)], \\ \dots & \dots \dots \dots, \\ \mu_{k_w(s)}^{s+1} &= \mu_{k_w(s)}^s [1 - \alpha \mathcal{C}_{k_w}(\mathbf{x}^s)], \\ \mu_k^{s+1} &= \mu_k^s, \quad k = \overline{1, h}, \quad k \neq k_1(s), \dots, k_w(s); \end{aligned} \tag{3.26}$$

The parameters β, γ, α are the step coefficients.

3. Active variables. To choice active variables we use feedback control with respect to the residuals on the each step of iteration. Consider the choosing rule of the active variables for the ELP problem (3.2, 3.3, 3.4). Introduce the residuals

$$\begin{aligned} \vartheta_i(\mathbf{z}^s, \bar{\mu}^s) &= |1 - \Theta_i(\mathbf{z}^s, \bar{\mu}^s)|, \quad i = \overline{1, n}; \\ \varepsilon_k(\mathbf{z}^s, \bar{\mu}^s) &= \mu_k \Gamma_k(\mathbf{z}^s, \bar{\mu}^s), \quad k = \overline{1, h}. \end{aligned} \tag{3.27}$$

One of the possible rules is a choice with respect the maximum residual. In this case it is necessary to select p maximum residual $\vartheta_{i_1}, \dots, \vartheta_{i_p}$ and q maximum residual $\varepsilon_{k_1}, \dots, \varepsilon_{k_q}$ for the each iterative step s . The numbers i_1, \dots, i_p and k_1, \dots, k_q belong to the intervals $[1, n]$ and $[1, h]$ respectively.

Consider the step s and find the maximal residual $\vartheta_{i_1}(\mathbf{z}^s, \bar{\mu}^s)$ among $\vartheta_1(\mathbf{z}^s, \bar{\mu}^s), \dots, \vartheta_n(\mathbf{z}^s, \bar{\mu}^s)$. Exclude the residual $\vartheta_{i_1}(\mathbf{z}^s, \bar{\mu}^s)$ from the set $\vartheta_1(\mathbf{z}^s, \bar{\mu}^s), \dots, \vartheta_n(\mathbf{z}^s, \bar{\mu}^s)$, and find the maximal residual $\vartheta_{i_2}(\mathbf{z}^s, \bar{\mu}^s)$ among $\vartheta_1(\mathbf{z}^s, \bar{\mu}^s), \dots, \vartheta_{i_1-1}(\mathbf{z}^s, \bar{\mu}^s), \vartheta_{i_1+1}(\mathbf{z}^s, \bar{\mu}^s), \dots, \vartheta_n(\mathbf{z}^s, \bar{\mu}^s)$, and etc., until all p maximal residuals will be found. Selection of the maximal residuals $\varepsilon_{k_1}(\mathbf{z}^s, \bar{\mu}^s), \dots, \varepsilon_{k_q}(\mathbf{z}^s, \bar{\mu}^s)$ is implemented similarly.

Now we represent the formalized procedure of selection. Introduce the following designations:

$$\frac{n}{p} = I + \delta, \quad I = \left[\frac{n}{p} \right], \quad 0 \leq \delta \leq p - 1;$$

$$\frac{h}{q} = J + \omega, \quad J = \left[\frac{h}{q} \right], \quad 0 \leq \omega \leq q - 1. \quad (3.28)$$

$$\varrho = s \pmod{(I + 1)}, \quad \kappa = s \pmod{(J + 1)}. \quad (3.29)$$

Consider the index sets:

$$N = \{1, \dots, n\} \quad N_r(s) = \{i_1(s), \dots, i_r(s)\};$$

$$K = \{1, \dots, h\} \quad K_v(s) = \{k_1(s), \dots, k_v(s)\}, \quad (3.30)$$

where

$$r = \begin{cases} [1, p], & \text{if } \varrho < I; \\ [1, \delta], & \text{if } \varrho = I; \\ 0, & \text{if } \delta = 0 \end{cases}, \quad v = \begin{cases} [1, q], & \text{if } \kappa < J; \\ [1, \omega], & \text{if } \kappa = J; \\ 0, & \text{if } \omega = 0. \end{cases} \quad (3.31)$$

Introduce the following sets:

$$P_{r-1}(s) = \left[\bigcup_{l=1}^{\varrho} N_p(s-l) \right] \cup N_r(s), \quad G_{r-1} = N \setminus P_{r-1}(s).$$

$$Q_{v-1}(s) = \left[\bigcup_{l=1}^{\kappa} K_v(s-l) \right] \cup K_v(s), \quad R_{v-1} = K \setminus Q_{v-1}(s). \quad (3.32)$$

The numbers r and v are determined by the equalities (3.31), and

$$N_0(s) = K_0(s) = P_0(s) = G_0(s) = Q_0(s) = R_0(s) = \emptyset, \quad \text{for all } s.$$

Now we define the rule of the $(p+q)$ -maximal residual in the following form:

$$i_j(s) = \arg \max_{[i \in G_{j-1}(s)]} \vartheta_i(\mathbf{z}^s, \bar{\mu}^s),$$

$$k_l(s) = \arg \max_{[k \in R_{l-1}(s)]} \varepsilon_k(\mathbf{z}^s, \bar{\mu}^s). \quad (3.33)$$

According to this rule we have the chain of inequalities:

$$\vartheta_{i_p}(\mathbf{z}^s, \bar{\mu}^s) < \vartheta_{i_{p-1}}(\mathbf{z}^s, \bar{\mu}^s) < \dots < \vartheta_{i_1}(\mathbf{z}^s, \bar{\mu}^s),$$

$$\varepsilon_{k_q}(\mathbf{z}^s, \bar{\mu}^s) < \varepsilon_{k_{q-1}}(\mathbf{z}^s, \bar{\mu}^s) < \dots < \varepsilon_{k_1}(\mathbf{z}^s, \bar{\mu}^s). \quad (3.34)$$

We can see that all dual variables are sequentially transformed to active ones during $I + J + 2$ iterations. It is repeated with a period of $I + J + 2$.

4. Dynamic EIRP procedure with feedback

The basic idea of the dynamic procedure lies in the sequential (stage by stage) obtaining of the projections and the solution of the sequence of the appropriate ELP or EQP. The feasible sets in these problems consist on two subsets. One of them describes the class of the possible density functions (2.7), and it is not depends from irradiation of the object. The other subset depends on the measured projections (2.8).

On the stage t we have the t -prior image \mathbf{E}^t , the projection's vector \mathbf{u}^t , measured with noise $\bar{\zeta}$. The problem (2.7 - 2.9, 2.13) is solved and we have t -posteriori image

$$\bar{\psi}_*^t(\mathbf{E}^t | \mathbf{u}^t) = \arg \max_{\bar{\psi}} \{H(\bar{\psi}, \mathbf{E}^t) | \bar{\psi}^t \in \mathcal{D}(\mathbf{u}^t)\}. \quad (4.1)$$

On the next $(t + 1)$ -stage the prior image $\mathbf{E}^{(t+1)}$ is formed on the basis of $t, (t - 1), \dots, (t - s)$ -posterior images $\bar{\psi}^{(t,*)}, \bar{\psi}^{((t-1),*)}, \dots, \bar{\psi}^{((t-s),*)}$. Each of posterior images are reconstructed by the rule (4.1).

In the general case the procedure holds

$$\mathbf{E}^{(t+1)} = \tilde{\mathcal{L}}(\mathbf{E}^t, \bar{\psi}^{(t,*)}, \dots, \bar{\psi}^{((t-s),*)}), \quad (4.2)$$

where \mathcal{L} is the feedback operator, which characterizes the transformation of the t -prior image, and $t, (t - 1), \dots, (t - s)$ -posterior images to the $(t + 1)$ -prior image.

Represent the operator $\tilde{\mathcal{L}}$ in the following form:

$$\tilde{\mathcal{L}}(\mathbf{E}^t, \bar{\psi}^{(t,*)}, \dots, \bar{\psi}^{((t-s),*)}) = \mathbf{E}^t + \epsilon \mathcal{L}(\mathbf{E}^t, \bar{\psi}^{(t,*)}, \dots, \bar{\psi}^{((t-s),*)}), \quad (4.3)$$

where ϵ is a small positive real number.

Then the dynamic EIRP procedure (the discrete procedure) takes a form:

$$\mathbf{E}^{(t+1)} = \mathbf{E}^t + \epsilon \mathcal{L}(\mathbf{E}^t, \bar{\psi}^{(t,*)}, \dots, \bar{\psi}^{((t-s),*)}). \quad (4.4)$$

Now let the variable t is continuous one. Then under $\epsilon \rightarrow 0$ we will have the continuous dynamic EIRP that is described by the differential equation:

$$\frac{d\mathbf{E}(t)}{dt} = \mathcal{L}(\mathbf{E}^t, \bar{\psi}^{(t,*)}, \dots, \bar{\psi}^{((t-s),*)}). \quad (4.5)$$

The $t, (t - 1), \dots, (t - s)$ -posterior images are defined by the ELP or EQP problems, which represent the appropriate *entropy operators* (4.1). So the dynamic EIRP procedure (4.1, 4.2, (4.4)) represents the discrete dynamic system with entropy operator (the discrete DSEO) and its the continuous analog (4.5) represents the continuous dynamic system with entropy operator (the continuous DSEO). Some general properties of the DSEO will be described in the next section.

4.1 Structures of the dynamic EIRP procedures

Let us consider some partial cases. One of them relates to the examination of a Markov version of the procedure when the information only on the t -posterior image is used to shape up $\mathbf{E}^{(t+1)}$:

$$\mathbf{E}^{(t+1)} = \mathcal{L}(\mathbf{E}^t, \bar{\psi}^{t,*}). \quad (4.6)$$

In the second case, information collections at $t, t-1, \dots, t-s$ stages are used for the estimation of the current mean $\bar{\psi}^t$ of the posterior image:

$$E^{(t+1)} = \mathcal{L}(E^t, \bar{\psi}^t). \quad (4.7)$$

Finally, in the third case, information collections at $t, t-1, \dots, t-s$ stages are used for the estimation of the current mean $\bar{\psi}^t$ and dispersion \mathbf{d}^t of the posterior image:

$$\mathbf{E}^{(t+1)} = \mathcal{L}(\mathbf{E}^t, \bar{\psi}^t, \mathbf{d}^t). \quad (4.8)$$

We will introduce the following types of the dynamic procedures of the EIRP:

- the identical feedback (*I – feedback*)

$$\mathbf{E}^{(t+1)} = \arg \max_{\psi^t} H(\bar{\psi}^t | \mathbf{E}^t) | \bar{\psi}^t \in \mathcal{D}(\mathbf{u}^t); \quad (4.9)$$

- the feedback with respect to the current mean of image (*CM – feedback*)

$$\mathbf{E}^{(t+1)} = \mathbf{E}^t + \alpha(\mathbf{E}^t - \bar{\psi}^t), \quad (4.10)$$

$$\bar{\psi}^{(t+1)} = \bar{\psi}^t + \frac{1}{t+1} (\psi^{(t,*)} - \bar{\psi}^t);$$

$$\bar{\psi}^{(t,*)} = \arg \max_{\psi} \{H(\bar{\psi}, \mathbf{E}^t) | \bar{\psi} \in \mathcal{D}(\mathbf{u}^t)\}; \quad (4.11)$$

- the feedback with respect to the current mean and dispersion of image (*CMD – feedback*)

$$\mathbf{E}^{(t+1)} = \mathbf{E}^t + \alpha(\mathbf{d}^t)(\mathbf{E}^t - \bar{\psi}^t), \quad (4.12)$$

$$\bar{\psi}^{(t+1)} = \bar{\psi}^t + \frac{1}{t+1} (\bar{\psi}^{(t,*)} - \bar{\psi}^t), \quad (4.13)$$

$$\mathbf{d}^{(t+1)} = \mathbf{d}^t + \frac{1}{t+1} (\mathbf{d}^t + [\bar{\psi}^{(t,*)} - \bar{\psi}^t]^2),$$

$$\bar{\psi}^{(t,*)} = \arg \max_{\psi} \{H(\bar{\psi}, \mathbf{E}^t) | \bar{\psi} \in \mathcal{D}(\mathbf{u}^t)\}. \quad (4.14)$$

4.2 Investigation of the dynamic EIRP procedure with *I*-feedback

Consider the problem (2.13) in which the feasible set is the polyhedron, $\mathbf{a} = \mathbf{0}$, $\mathbf{b} = \mathbf{1}$, and the constraints to the possible density functions (2.7) are absent. In this case t -posterior density function hold:

$$\psi_i^{t,*} = \frac{E_i^t}{E_i^t + \prod_{j=1}^n [z_j^t]^{t_{ji}}}, \quad i = \overline{1, m}. \quad (4.15)$$

The exponential Lagrange multipliers z_1, \dots, z_n are defined from the following equations:

$$\Phi_j(\mathbf{z}^t) = \sum_{i=1}^m \frac{t_{ji} E_i^t}{E_i^t + \prod_{j=1}^n [z_j^t]^{t_{ji}}} = u_j, \quad j = \overline{1, n}. \quad (4.16)$$

According to the definition of the I -feedback procedure we have:

$$E_i^{t+1} = \Psi_i(\mathbf{E}^t) = \frac{E_i^t}{E_i^t + \varphi_i[\mathbf{z}^t(\mathbf{E}^t)]}, \quad i = \overline{1, m}, \tag{4.17}$$

where

$$\varphi_i[\mathbf{z}^t(\mathbf{E}^t)] = \prod_{j=1}^n [z_j^t]^{t_{ji}} \geq 0. \tag{4.18}$$

The iterative process (4.17) can be considered as the method of the simple iteration applying to the equations:

$$E_i = \frac{E_i}{E_i + \varphi_i[\mathbf{z}(\mathbf{E})]}, \quad i = \overline{1, m}. \tag{4.19}$$

Theorem 1. Let $\varphi_i[\mathbf{z}(\mathbf{E})] \leq 1$ for all $i = \overline{1, m}, \mathbf{z} \geq \mathbf{0}, \mathbf{0} \leq \mathbf{E} \leq \mathbf{1}$.

Then the system of equations (4.19) has the unique solution \mathbf{E}^* .

Proof. Consider the auxiliary equation:

$$x = \Psi(x) = \frac{x}{x + a}, \quad x \geq 0.$$

We can see that the function $\Psi(x)$ is strictly monotone increasing ($\Psi'(x) > 0$ for all $x > 0$ and $\Psi(\infty) = 0$), and is strictly convex ($\Psi''(x) < 0, x > 0$ and $\Psi''(\infty) = 0$).

If $\Psi'(0) = 1/a \geq 1, (a \leq 1)$, then the auxiliary equation has the unique solution, and the method of the simple iteration is converged to this solution.

Now it is necessary to find a conditions when $\varphi_i[\mathbf{z}(\mathbf{E})] \leq 1$. The sufficient conditions for it is formed by the following theorem.

Theorem 2. Let the matrix T in (2.7) has the complete rank n , and the following conditions be valid:

$$\max_{j \in [1, n]} \left(\sum_{i=1}^m t_{ji} \right) - u_{max} > 0, \quad u_{max} = \max_{j \in [1, n]} u_j; \tag{4.20}$$

$$\min_{j \in [1, n]} \left(\sum_{i=1}^m t_{ji} \left(\frac{E_i^t}{E_i^t + 1} \right) \right) - u_{min} < 0, \quad u_{min} = \min_{j \in [1, n]} u_j. \tag{4.21}$$

Then $\varphi_i[\mathbf{z}(\mathbf{E})] \leq 1$ for all $i = \overline{1, m}$.

Proof. Consider the Jacobian of the vector-function $\bar{\Phi}(\mathbf{z}^t)$. Its elements take a form:

$$\frac{\partial \Phi_j(\mathbf{z}^t)}{\partial z_k} = -\frac{1}{z_k} \sum_{i=1}^m \frac{t_{ji} t_{ki} E_i^t \varphi_i(\mathbf{z}^t)}{[E_i^t + \varphi_i(\mathbf{z}^t)]^2} \leq 0, \quad (j, k) = \overline{1, n}.$$

The equality to zero is reached when $\mathbf{z} \rightarrow \infty$. So, the functions Φ_1, \dots, Φ_n are strictly monotone decreasing.

Therefore, under the theorem's conditions, the solution of the equations (4.16) $z_j^* \in [0, 1], j = \overline{1, n}$, and the functions $0 < \varphi_j(\mathbf{z}(\mathbf{E})) \leq 1$.

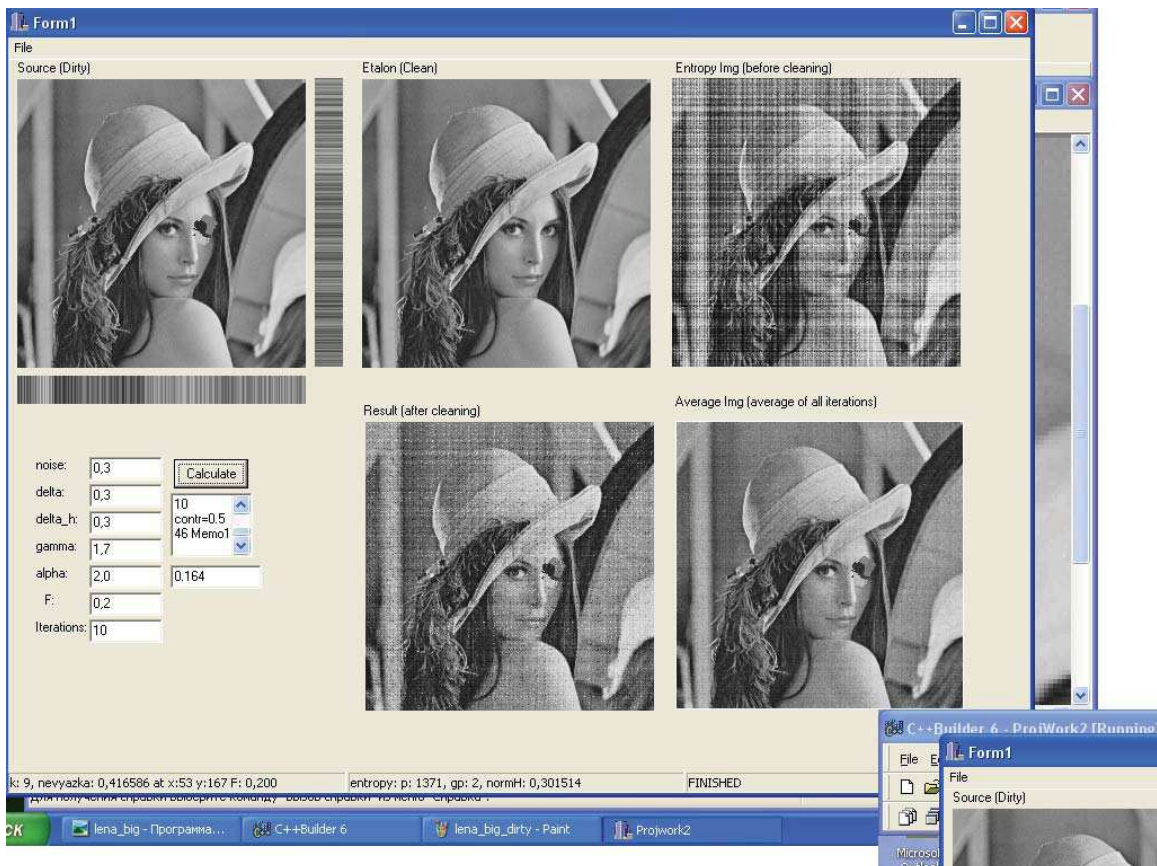


Fig. 2. Test image 1

4.3 Computer experiment

Consider the dynamic EIRP when the tomographic device gives the orthogonal linear projections with the matrix

$$T = \begin{pmatrix} 1 & \dots & 1 & \dots & 0 & \dots & 0 \\ \dots & \dots & \dots & \dots & \dots & \dots & \dots \\ 0 & \dots & 0 & \dots & 1 & \dots & 1 \\ 1 & \dots & 0 & \dots & 1 & \dots & \dots \\ \dots & \dots & \dots & \dots & \dots & \dots & \dots \\ 0 & \dots & 1 & \dots & 0 & \dots & 1 \end{pmatrix} \quad (4.22)$$

As a test image, use is made of the LENA test (IEEE Image Processing), on which the spot is placed (fig. 2, the left upper window).

To the right and below window, the projections with noise are shown. In the example, the noise/signal ratio amounted to 0.3.

It is necessary to restored *the LENA with the spot* having the noisy projections. We use "the pure LENA", which is shown in the second upper window, as the 0-prior image $E^0 = \{E_1^0, \dots, E_m^0\}$.

This problem of the EIRP is described by the ELP with the constrains-equalities. The multiplicative algorithms with 1-active dual variable (3.18) is used for solution of the problem.

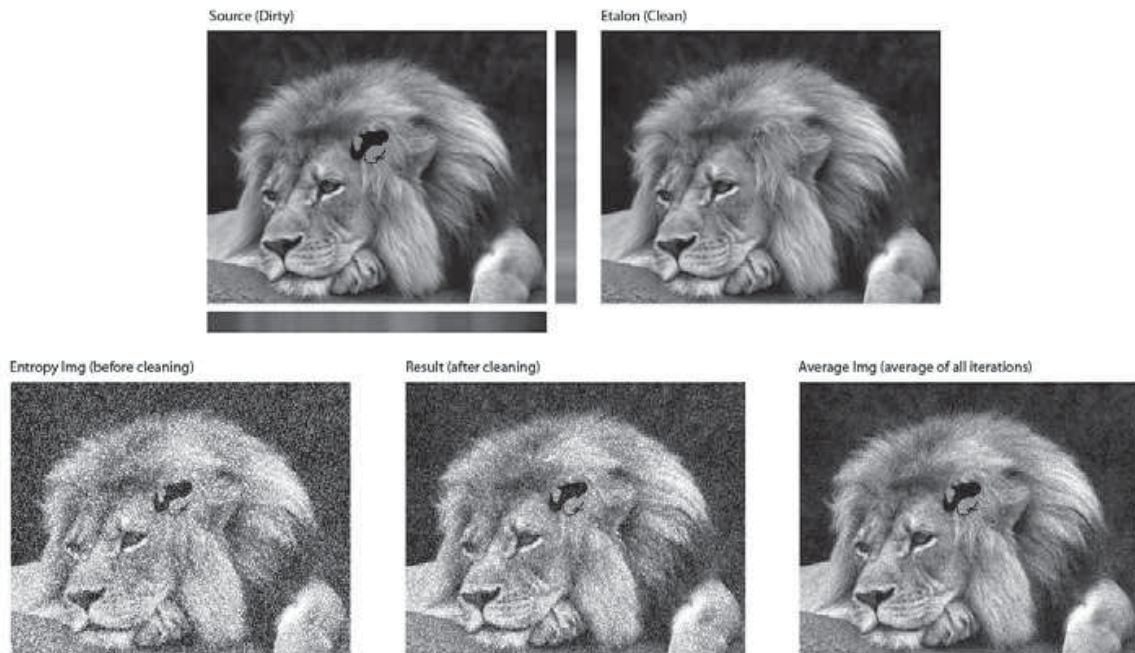


Fig. 3. Test image 2

The modification of the dynamic procedure with *I*-feedback involved the following. At each stage *t* we shaped up the auxiliary vector

$$\tilde{\psi}_i^{(t,*)} = \begin{cases} \psi_i^{(t,*)}, & \text{if } |E_i^t - \psi_i^{(t,*)}| \geq \delta, \\ E_i^t, & \text{if } |E_i^t - \psi_i^{(t,*)}| < \delta \end{cases} \quad (4.23)$$

$$i = \overline{1, m}. \quad (4.24)$$

In parallel, the current mean of the components of the vector $\tilde{\psi}^{t,*}$ are calculated:

$$\tilde{\psi}_i^{(t+1)} = \tilde{\psi}_i^t + \frac{1}{t+1} (\tilde{\psi}_i^{t,*} - \tilde{\psi}_i^t). \quad (4.25)$$

The modified dynamic procedure takes the form:

$$E_i^{t+1} = \tilde{\psi}_i^{(t+1)}, \quad i = \overline{1, m}. \quad (4.26)$$

In fig. 2, in the right upper window, the result of the EIRP with the static procedure is shown. In the middle lower window, fig. 2 shows results of the EIRP by the dynamic procedure with *I*-feedback, and in the right lower window results of the modified dynamic procedure is shown. The quality of the right image is obvious.

The test image 2 is shown in the fig. 3.

5. Dynamic systems with entropy operator (DSEO)

We can see that dynamic procedures of the image restoration from projections represent a dynamic discrete system with the particular type of the entropy operator with the generalized entropy Fermi-Dirac (3.2), and the feasible set that is described by the inequality and the equality (3.4).

In general case the class of the continuous DSEO is described by the following differential equations:

$$\frac{d\mathbf{u}(t)}{dt} = \mathcal{U}(\mathbf{u}(t), \mathbf{v}(t), \mathbf{y}[t, \mathbf{u}(t), \mathbf{v}(t)]), \quad \mathbf{u}(0) = \mathbf{u}^0, \quad (5.1)$$

$$\frac{d\mathbf{v}(t)}{dt} = \mathcal{V}(\mathbf{u}(t), \mathbf{v}(t), \mathbf{y}[t, \mathbf{u}(t), \mathbf{v}(t)]), \quad \mathbf{v}(0) = \mathbf{v}^0. \quad (5.2)$$

with the entropy operator:

$$\mathbf{y}[t, \mathbf{u}(t), \mathbf{v}(t)] = \arg \max_{\mathbf{y}} \{H(t, \mathbf{y}, \mathbf{u}(t)) \mid \mathbf{y} \in \mathcal{D}[t, \mathbf{v}(t)]\}, \quad (5.3)$$

where: $H(t, \mathbf{y} \mid \mathbf{u})$ is an entropy function with the H -parameters \mathbf{u} ; the vectors $(\mathbf{y}, \mathbf{u}) \in R^n$, $\mathbf{v} \in R^m$, and $\mathcal{D}(t, \mathbf{v})$ is a feasible set depended from the \mathcal{D} -parameters \mathbf{v} .

In these equations \mathcal{U} is the n -vector-function, and \mathcal{V} is the m -vector-function.

5.1 Classification of the DSEO

Some physical analogues we will use for construction of the classificatory graph. In particular, from the equations (5.1, 5.2) it is seen the rates of parameters is proportional to the flows. The entropy function is a probability characteristics of a stochastic process. So the H -parameters are the parameters of this process.

We will use the following classificatory indicators:

- (A), types of the state coordinates ($\langle H \rangle$ -coordinates \mathbf{u} , $\langle D \rangle$ -coordinates \mathbf{v} , $\langle HD \rangle$ -coordinates \mathbf{u}, \mathbf{v});
- (B), flows ($\langle Add \rangle$ - an additive flow, $\langle Mlt \rangle$ - a multiplicative flow);
- (C), entropy functions ($\langle F \rangle$ -Fermi-, $\langle E \rangle$ -Einstein-, $\langle B \rangle$ -Boltzmann-entropy functions);
- (D), models of the feasible sets ($\langle Eq \rangle$ -equalities, $\langle Ineq \rangle$ -inequalities, $\langle Mx \rangle$ -mixed);
- (F), types of the feasible sets ($\langle Plh \rangle$ - polyhedron, $\langle Cnv \rangle$ -convex, $\langle nCnv \rangle$ -non-convex).

The classificatory graph is shown in the fig. 4.

At the beginning we consider some properties of the entropy operator, notably, the $\langle HD, B, Eq, Plh \rangle$ -entropy operator that is included to the $\langle HD \rangle$ -DSEO:

$$\mathbf{y}[\mathbf{u}, \mathbf{v}] = \arg \max \{H_B[\mathbf{y}, \mathbf{u}] \mid \mathbf{y} \in \tilde{\mathcal{D}}[\mathbf{v}]\}, \quad (5.4)$$

where Boltzmann-entropy function is

$$H(\mathbf{y} \mid \mathbf{u}) = -\left(\mathbf{y}' \ln \frac{\mathbf{y}}{e\mathbf{u}}\right), \quad \mathbf{y} \in R_+^m, \quad (5.5)$$

and the feasible set is

$$\tilde{\mathcal{D}}[\mathbf{v}] = \{\mathbf{y} : \tilde{T}\mathbf{y} = \mathbf{v}, \mathbf{y} \geq \mathbf{0}\}. \quad (5.6)$$

In these expressions the vector $\ln \frac{\mathbf{y}}{e\mathbf{u}} = \{\ln \frac{y_1}{eu_1}, \dots, \ln \frac{y_m}{eu_m}\}$, and the vectors

$$\mathbf{u} \in U_+^m(\mathbf{u}^-, \mathbf{u}^+) \subset R_+^m, \quad \mathbf{v} \in V_+^n(\mathbf{v}^-, \mathbf{v}^+) \subset R_+^n, \quad n < m, \quad (5.7)$$

and

$$\begin{aligned} U_+^m(\mathbf{u}^-, \mathbf{u}^+) &= \{\mathbf{u} : \mathbf{0} < \mathbf{u}^- \leq \mathbf{u} \leq \mathbf{u}^+ \leq \mathbf{1}\}, \\ V_+^n(\mathbf{v}^-, \mathbf{v}^+) &= \{\mathbf{v} : \mathbf{0} < \mathbf{v}^- \leq \mathbf{v} \leq \mathbf{v}^+\}. \end{aligned} \quad (5.8)$$

The $(n \times m)$ -matrix $\tilde{T} = [\tilde{t}_{ki} \geq 0]$ has a full rank equal n .

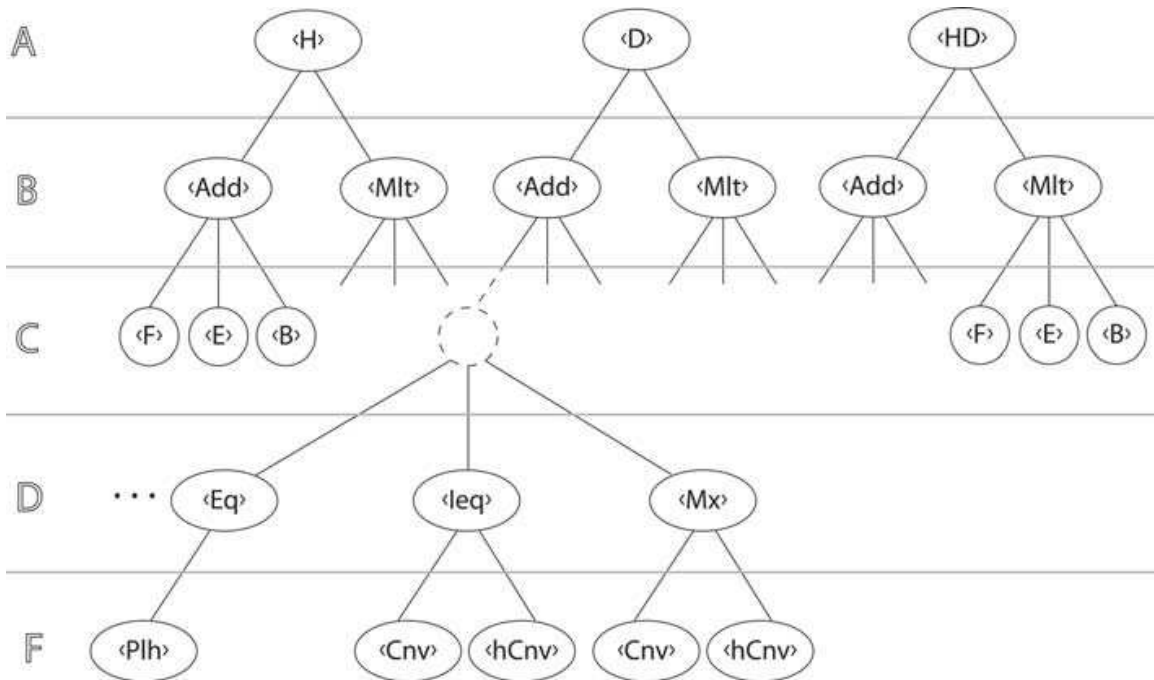


Fig. 4. Classificatory graph

5.2 Estimation of the local Lipschitz-constants for the $\langle HD, B, Eq, Plh \rangle$ -entropy operator.

The $\langle HD, B, Eq, Plh \rangle$ -entropy operator describes the mapping of the sets $U_+^m(\mathbf{u}^-, \mathbf{u}^+)$ and $V_+^n(\mathbf{v}^-, \mathbf{v}^+)$ into the set $\mathcal{Y} \subset R_+^m$ of the operator's values. We will characterize this mapping by two local Lipschitz-constants - L_U and L_V , i.e.

$$\|\mathbf{y}[\mathbf{u}^{(1)}, \mathbf{v}^{(1)}] - \mathbf{y}[\mathbf{u}^{(2)}, \mathbf{v}^{(2)}]\| \leq L_U \|\mathbf{u}^{(1)} - \mathbf{u}^{(2)}\| + L_V \|\mathbf{v}^{(1)} - \mathbf{v}^{(2)}\|. \tag{5.9}$$

We will use the upper estimations of local Lipschitz-constant:

$$L_U \leq \max_{U_+^m} \|Y_U\|, \quad L_V = \max_{V_+^n} \|Y_V\|, \tag{5.10}$$

where Y_U and Y_V are the U -Jacobian and the V -Jacobian of the operator $\mathbf{y}[\mathbf{u}, \mathbf{v}]$ respectively.

Evaluate the normalized entropy operator in the following form:

$$\mathbf{x}(\mathbf{u}, \mathbf{v}) = \arg \max (H[\mathbf{x}, \mathbf{u}] \mid T\mathbf{x} = \mathbf{v}, \mathbf{x} \geq \mathbf{0}), \tag{5.11}$$

where

$$H(\mathbf{x} \mid \mathbf{u}) = - \left(\mathbf{x}' \ln \frac{\mathbf{x}}{e\mathbf{u}} \right). \tag{5.12}$$

$$t_i = \sum_{k=1}^n \tilde{t}_{ki}, \quad t_{ki} = \frac{\tilde{t}_{ki}}{t_i}, \quad i = \overline{1, m}. \tag{5.13}$$

The matrix T in (5.11) has a full rank n and the normalized elements, i.e. $\sum_{k=1}^n t_{ki} = 1$ for all $i = \overline{1, m}$. Also it is assumed that the condition of the dominating diagonal is valid for the quadratic matrix TT' , i.e. the following inequalities take a form:

$$\sum_{i=1}^m \left(t_{ki}^2 - \sum_{j \neq k}^n t_{ki} t_{ji} \right) \geq \varrho > 0, \quad k = \overline{1, n}. \tag{5.14}$$

The feasible set $\mathcal{D} = \{\mathbf{x} : T\mathbf{x} = \mathbf{v}, \mathbf{x} \geq \mathbf{0}\}$ is not empty, notable, there exists some subset of the nonnegative vectors $\mathbf{x} \in \mathcal{D}$.

Designate the Lipschitz-constant for the normalized operator (5.11) as \tilde{L}_U and \tilde{L}_V respectively, i.e.

$$\|\mathbf{x}[\mathbf{u}^{(1)}, \mathbf{v}^{(1)}] - \mathbf{x}[\mathbf{u}^{(2)}, \mathbf{v}^{(2)}]\| \leq \tilde{L}_U \|\mathbf{u}^{(1)} - \mathbf{u}^{(2)}\| + \tilde{L}_V \|\mathbf{v}^{(1)} - \mathbf{v}^{(2)}\|. \quad (5.15)$$

We will use the upper estimations of local Lipschitz-constant:

$$\tilde{L}_U \leq \max_{U_+^m} \|X_U\|, \quad \tilde{L}_V = \max_{V_+^n} \|X_V\|, \quad (5.16)$$

where X_U and X_V are the U -Jacobian and the V -Jacobian of the operator $\mathbf{x}[\mathbf{u}, \mathbf{v}]$ respectively.

According to (5.13), the following relation between the operators $\mathbf{y}(\mathbf{u}, \mathbf{v})$ (5.4) and $\mathbf{x}(\mathbf{u}, \mathbf{v})$ (5.11) exists:

$$\mathbf{y}(\mathbf{u}, \mathbf{v}) = \mathbf{t}^{-1} \otimes \mathbf{x}(\mathbf{u}, \mathbf{v}), \quad (5.17)$$

where the vector $\mathbf{t}^{-1} = \{t_1^{-1}, \dots, t_m^{-1}\}$, where the components t_i are defined by the equalities (5.13), and \otimes implies the coordinate-wise multiplication of the vectors.

Thus we have the following equalities:

$$L_U = \|\mathbf{t}^{-1}\| \tilde{L}_U, \quad L_V = \|\mathbf{t}^{-1}\| \tilde{L}_V, \quad (5.18)$$

Thus, we will calculate the local Lipschitz-constants estimations for the normalized entropy operator (5.11, 5.12) and then apply the formulas (5.17, 5.18).

The normalized entropy operator $\mathbf{x}(\mathbf{u}, \mathbf{v})$ can be represented by the form:

$$x_i(\mathbf{u}, \mathbf{v}) = u_i \exp \left(- \sum_{j=1}^n \lambda_j(\mathbf{u}, \mathbf{v}) t_{ji} \right), \quad i = \overline{1, m}, \quad (5.19)$$

where the Lagrange multipliers $\lambda_j(\mathbf{u}, \mathbf{v})$, ($j = \overline{1, n}$) as the implicit functions from \mathbf{u}, \mathbf{v} define by the equations:

$$\Phi_k[\mathbf{u}, \lambda(\mathbf{u}, \mathbf{v})] = \sum_{i=1}^m u_i t_{ki} \exp \left(- \sum_{j=1}^n \lambda_j(\mathbf{u}, \mathbf{v}) t_{ji} \right) = v_k, \quad k = \overline{1, n}. \quad (5.20)$$

1. Estimations of the norm's matrix X_U . The $(m \times m)$ -matrix X_U takes a form:

$$X_U = \left[\frac{\partial x_i}{\partial u_j}, (i, j) = \overline{1, m} \right],$$

We will use Euclidean vector norm ($\|\mathbf{y}\|_2$), with which two matrix norm are consisted (see Voevodin (1984)):

- the spectral norm

$$\|A\|_2 = \sqrt{\sigma_{max}},$$

where σ_{max} is the maximal eigenvalue of the matrix A ;

- and the Euclidean norm

$$\|A\|_E = \sqrt{\sum_{i,j} |a_{ij}|^2}.$$

It is known that

$$\|A\|_2 \leq \|A\|_E$$

It is assumed that $\|X_U\| = \|X_U\|_2$. We have from (5.19) the following equality:

$$X_U = X_{\mathbf{u}} + X_{\lambda} \Lambda_U, \tag{5.21}$$

where the $(m \times m)$ -matrix

$$X_{\mathbf{u}} = \text{diag} \left[\frac{x_i}{u_i} \mid i = \overline{1, m} \right]; \tag{5.22}$$

the $(m \times n)$ -matrix

$$X_{\lambda} = -\mathbf{x} \otimes T'; \tag{5.23}$$

and the $n \times m$ -matrix

$$\Lambda_U = \left[\frac{\partial \lambda_j}{\partial u_i} \mid j = \overline{1, n}, i = \overline{1, m} \right] \tag{5.24}$$

In these expressions \otimes is coordinate-wise multiplication of the vector's components to the rows of the matrix.

According to (5.21) and the relation between the spectral norm and the Euclidean norm, we have:

$$\|X_U\|_2 \leq \|X_{\mathbf{u}}\|_E + \|X_{\lambda}\|_E \|\Lambda_U\|_E, \tag{5.25}$$

where

$$\|X_{\mathbf{u}}\|_E \leq \sqrt{m} \frac{x^{max}}{u_{min}^-}, \tag{5.26}$$

$$x^{max} = \max_{(i, \mathbf{u}, \mathbf{v})} x_i(\mathbf{u}, \mathbf{v}), \quad u_{min}^- = \min_i u_i^-. \tag{5.27}$$

$$\|X_{\lambda}\|_E \leq x^{max} \|T\|_E = x^{max} \sqrt{\sum_{i=1, j=1}^{m, n} t_{ij}^2}. \tag{5.28}$$

Now consider the equations (5.20), and differentiate the left and right sides of these equations by \mathbf{u} . We obtain the following matrix equation:

$$\Phi_{\lambda} \Lambda_U = -\Phi_{\mathbf{u}}, \tag{5.29}$$

From this implies that

$$\Lambda_U = \left[\frac{\partial \lambda_k}{\partial u_i} \mid k = \overline{1, n}, i = \overline{1, m} \right] = -\Phi_{\lambda}^{-1} \Phi_{\mathbf{u}}. \tag{5.30}$$

Here the $(n \times n)$ -matrix Φ_{λ} has elements

$$\phi_{ks}^{\lambda} = - \sum_{i=1}^m u_i t_{ki} t_{js} \exp \left(- \sum_{j=1}^n \lambda_j(\mathbf{u}, \mathbf{v}) t_{ji} \right), \quad (k, s) = \overline{1, n}; \tag{5.31}$$

and the $(n \times m)$ -matrix $\Phi_{\mathbf{u}}$ has elements

$$\phi_{ki}^{\mathbf{u}} = t_{ki} \exp \left(- \sum_{j=1}^n \lambda_j(\mathbf{u}, \mathbf{v}) t_{ji} \right), \quad k = \overline{1, n}, i = \overline{1, m}. \quad (5.32)$$

According to (5.30) we have

$$\|\Lambda_U\|_2 \leq \|\Phi_{\lambda}^{-1}\|_2 \frac{x^{\max}}{u_{\min}^-} \sqrt{\sum_{j=1, i=1}^{n, m} t_{ji}^2}. \quad (5.33)$$

Thus the norm's estimation of the matrix X_U takes a form:

$$\|X_U\|_2 \leq \frac{x^{\max}}{u_{\min}^-} \left(\sqrt{m} + x^{\max} \|\Phi_{\lambda}^{-1}\|_2 \sum_{i=1, j=1}^{m, n} t_{ij}^2 \right). \quad (5.34)$$

2. Estimations of the norm's matrix X_V . The $(m \times n)$ -matrix X_V takes a form

$$X_V = \left[\frac{\partial x_i}{\partial v_k}, i = \overline{1, m}, k = \overline{1, n} \right].$$

It is assumed that $\|X_V\| = \|X_V\|_2$. We have from (5.19) the following equality:

$$X_U = X_{\lambda} \Lambda_V, \quad (5.35)$$

where the $(m \times n)$ -matrix

$$X_{\lambda} = -\mathbf{x} \otimes T'; \quad (5.36)$$

and the $n \times n$ -matrix

$$\Lambda_V = \left[\frac{\partial \lambda_k}{\partial v_j}, (k, j) = \overline{1, n} \right]. \quad (5.37)$$

According to (5.36) and the relation between the spectral norm and the Euclidean norm, we have:

$$\|X_V\|_2 \leq \|X_{\lambda}\|_E \|\Lambda_V\|_E, \quad (5.38)$$

where

$$\|X_{\lambda}\|_E \leq x^{\max} \|T\|_E = x^{\max} \sqrt{\sum_{i=1, j=1}^{m, n} t_{ij}^2}. \quad (5.39)$$

Now consider the equations (5.20), and differentiate the left and right sides of these equations by \mathbf{v} . We obtain the following matrix equation:

$$\Phi_{\lambda} \Lambda_V = I. \quad (5.40)$$

From this implies that

$$\Lambda_U = \Phi_{\lambda}^{-1}. \quad (5.41)$$

Here the $(n \times n)$ -matrix Φ_{λ} is defined by (5.31). According to (5.41) we have

$$\|\Lambda_V\|_2 \leq \|\Phi_{\lambda}^{-1}\|_2. \quad (5.42)$$

Thus the norm's estimation of the matrix X_V takes a form:

$$\|X_V\|_2 \leq \|\Phi_\lambda^{-1}\|_2 x^{max} \sqrt{\sum_{i=1, j=1}^{m, n} t_{ij}^2}. \tag{5.43}$$

So, we can see that it is necessary to construct the norm's estimation for the matrix Φ_λ^{-1} , as well as for the norm's estimation of the matrix X_U .

3. Estimation of the spectral norm of the matrix Φ_λ^{-1} . The matrix Φ_λ (5.31) is symmetric and strictly negative defined for all λ . Therefore, it has n real, various, and negative eigenvalues (see Wilkinson (1970)). We will order them in the following way:

$$\mu_1 = \mu_{min} < \mu_2 < \dots < \mu_n = \mu_{max} < 0, \quad |\mu_{max}| > M. \tag{5.44}$$

The spectral norm of an inverse matrix is equal to the inverse value of the *modulus* of the maximum eigenvalue μ_{max} of the initial matrix, i.e.

$$\|\Phi_\lambda^{-1}\| \leq M^{-1}. \tag{5.45}$$

To definite the value M we resort to the Gershgorin theorem (see Wilkinson (1970)). According to the theorem any eigenvalue of a symmetric strictly negative definite matrix lies at least in one of the intervals with center $-c_k(\lambda)$ and the width $2\rho_k(\lambda)$:

$$-g_k^+(\lambda) = -c_k(\lambda) - \rho_k(\lambda) \leq \mu \leq -c_k(\lambda) + \rho_k(\lambda) = -g_k^-(\lambda), \quad k = \overline{1, n}, \tag{5.46}$$

where according to (5.19)

$$g_k^+(\lambda) = \sum_{i=1}^m x_i \left(t_{ki}^2 + \sum_{j \neq k}^n t_{ki} t_{ji} \right),$$

$$g_k^-(\lambda) = \sum_{i=1}^m x_i \left(t_{ki}^2 - \sum_{j \neq k}^n t_{ki} t_{ji} \right), \tag{5.47}$$

From the conditions (5.46) it follows that

$$|\mu_{max}| \in [\min_{k, \lambda} g_k^-(\lambda), \max_{k, \lambda} g_k^+(\lambda)]. \tag{5.48}$$

We can apply the lower estimation for the left side of this interval using (5.14):

$$\min_{k, \lambda} g_k^-(\lambda) \geq M = \varrho x^{min}, \tag{5.49}$$

where

$$x^{min} = \min_{(i, \mathbf{u}, \mathbf{v})} x_i(\mathbf{u}, \mathbf{v}). \tag{5.50}$$

Thus, in a view of (5.28), we have

$$\|\Phi_\lambda^{-1}\|_2 \leq (\varrho x^{min})^{-1}. \tag{5.51}$$

4. Estimation of the local Lipschitz-constants. According to (5.34) and (5.51), the estimation of the local U -Lipshitz-constant for the normalized entropy operator (5.19) takes a form:

$$\tilde{L}_U \leq \frac{x^{max}}{u_{min}^-} \left(\sqrt{m} + \frac{x^{max}}{qx^{min}} \sum_{i=1, j=1}^{m, n} t_{ij}^2 \right). \quad (5.52)$$

The estimation (5.43) of the local V -Lipshitz-constant for the normalized entropy operator (5.19) takes a form:

$$\tilde{L}_V \leq \frac{x^{max}}{x^{min}} q \sqrt{\sum_{i=1, j=1}^{m, n} t_{ij}^2}. \quad (5.53)$$

Using the links (5.18) between the normalized entropy operator (5.19) and the entropy operator (5.4) we will have:

$$\begin{aligned} L_U &\leq \sqrt{\sum_{i=1}^m \left(\sum_{k=1}^n t_{ki} \right)^2} \frac{x^{max}}{u_{min}^-} \left(\sqrt{m} + \frac{x^{max}}{qx^{min}} \sum_{i=1, j=1}^{m, n} t_{ij}^2 \right), \\ L_V &\leq \sqrt{\sum_{i=1}^m \left(\sum_{k=1}^n t_{ki} \right)^2} \frac{x^{max}}{(x^{min} q)} \sqrt{\sum_{i=1, j=1}^{m, n} t_{ij}^2}. \end{aligned} \quad (5.54)$$

5.3 Boundedness of the normalized entropy operator

Let us consider the normalized entropy operator (5.11, 5.19, 5.20), the parameters of which $\mathbf{u} \in U_+^m(\mathbf{u}^-, \mathbf{u}^+)$ and $\mathbf{v} \in V_+^n(\mathbf{v}^-, \mathbf{v}^+)$.

Rewrite the equations (5.19, 5.20) in respect to the exponential Lagrange multipliers $z_j = \exp(-\lambda_j)$:

$$x_i(\mathbf{z}, \mathbf{u}) = u_i \prod_{j=1}^n z_j^{t_{ji}}, \quad \overline{1, m}, \quad (5.55)$$

$$\Psi_k[\mathbf{z}, \mathbf{u}] = \sum_{i=1}^m t_{ki} u_i \prod_{j=1}^n z_j^{t_{ji}} = v_k, \quad \mathbf{z} \geq 0, \quad k = \overline{1, n}. \quad (5.56)$$

It is known some properties of the operator (5.55, 5.56) are defined by the Jacobians of the functions $\mathbf{x}(\mathbf{z}, \mathbf{u})$ and $\Phi(\mathbf{z}, \mathbf{u})$ in respect to the variables \mathbf{z}, \mathbf{u} .

Consider the function $\mathbf{x}(\mathbf{z}, \mathbf{u})$. We have the Jacobians:

- $G_{\mathbf{z}}$ with the elements

$$g_{ik}^{\mathbf{z}} = u_i t_{ki} \frac{1}{z_k} \prod_{j=1}^n z_j^{t_{ji}} \geq 0, \quad i = \overline{1, m}, k = \overline{1, n}; \quad (5.57)$$

and

- $G_{\mathbf{u}}$ with the elements

$$g_{is}^{\mathbf{u}} = \prod_{j=1}^n z_j^{t_{ji}} \geq 0, \quad (i, s) = \overline{1, m} \quad (5.58)$$

We can see that the elements of these Jacobians are nonnegative for all $\mathbf{z} \geq \mathbf{0}$ and $\mathbf{u} \in U_+^m(\mathbf{u}^-, \mathbf{u}^+)$, where $\mathbf{u}^- > \mathbf{0}$, $\mathbf{u}^+ \leq \mathbf{1}$. Thus the functions $\mathbf{x}(\mathbf{z}, \mathbf{u})$ increase in a monotone way on these sets.

Now consider the function $\Psi(\mathbf{z}, \mathbf{u})$ and its the Jacobians:

- $P_{\mathbf{z}}$ with the elements

$$p_{kl}^{\mathbf{z}} = \sum_{i=1}^m u_i t_{ki} \frac{1}{z_l} \prod_{j=1}^n z_j^{t_{ji}} \geq 0, \quad (k, l) = \overline{1, n}; \tag{5.59}$$

and

- $P_{\mathbf{u}}$ with the elements

$$p_{ks}^{\mathbf{u}} = t_{ks} \prod_{j=1}^n z_j^{t_{js}} \geq 0, \quad k = \overline{1, n}, s = \overline{1, m}. \tag{5.60}$$

The elements of the matrix $P_{\mathbf{z}}$ and $P_{\mathbf{u}}$ are nonnegative. Thus, the function $\Psi(\mathbf{z}, \mathbf{u})$ increase in a monotone way on the sets $\mathbf{z} \geq \mathbf{0}$ and $\mathbf{u} \in U_+^m(\mathbf{u}^-, \mathbf{u}^+)$.

According to (5.55) the function $\mathbf{x}(\mathbf{z}, \mathbf{u})$ is analytical one. The system of the equations define the unique differentiable implicit function $\mathbf{z}(\mathbf{u}, \mathbf{v})$ on the sets $U_+^m(\mathbf{u}^-, \mathbf{u}^+)$ and $V_+^n(\mathbf{v}^-, \mathbf{v}^+)$ (see theorem 5, pp. 91-92; theorems 1, 2, pp. 95-96, Popkov (1995)).

1. Estimation of the minimum value of the normalized $\langle HD, B, Eq, Plh \rangle$ -entropy operator.

The solution of the problem can be represented by the following theorem.

Theorem 2. Let the matrix T (5.11) has a full rank and $\mathbf{u} \in U_+^m(\mathbf{u}^-, \mathbf{u}^+)$.

Then $x^{min} = \min_i x_i(\mathbf{u}^-, z^{min})$, where:

$$z^{min} = \min_j \tilde{z}_j, \quad j = \overline{1, n},$$

and $\tilde{z}_1, \dots, \tilde{z}_n$ are the components of the solution of the equation

$$\Psi(\mathbf{z}, \mathbf{u}^-) = \mathbf{v}^-,$$

and the vectors $\mathbf{u}^-, \mathbf{v}^-$ have enough small components.

Proof. According to (5.55) $\mathbf{x}(\mathbf{z}, \mathbf{0}) = \mathbf{0}$ and $\mathbf{x}(z_1, \dots, z_{i-1}, 0, z_{i+1}, \dots, z_n; \mathbf{u}) = \mathbf{0}$. As the function (5.55) increases in a monotone way and analytical one, then $x^{min} = \min_i x_i(\mathbf{u}^-, z^{min})$ for enough small components \mathbf{u}^- .

Consider the equations (5.56). We have $\Psi(\mathbf{z}, \mathbf{0}) = \Psi(z_1, \dots, z_{i-1}, 0, z_{i+1}, \dots, z_n; \mathbf{u}) = \mathbf{0}$. As the function $\Psi(\mathbf{z}, \mathbf{u})$ increase in a monotone way and analytical one, then the proposition of the theorem is valid.

2. Estimation of the maximum value of the normalized $\langle HD, B, Eq, Plh \rangle$ -entropy operator.

This problem is more complicated then the previous one. So, at the beginning we describe the general procedure of the estimation forming.

On the first step we reduce the equations (5.56) to the equations with a monotone operator, which also depends on the variable \mathbf{z} and parameters \mathbf{u}, \mathbf{v} .

On the second step we define the variable $\mathbf{z}^0 < \mathbf{z}_{min}$, where the vector \mathbf{z}_{min} has the components z^{min} (theorem 2). The vector $\mathbf{z}^0 = \{z^0, \dots, z^0\}$ such that the values of the monotone operator at the point \mathbf{z}^0 is more or equal to \mathbf{z}^0 .

On the third, we define the vector $\mathbf{z}_{max} = \{z^{max}, \dots, z^{max}\}$ such that the monotone operator is less then \mathbf{z}_{max} . For determination of the \mathbf{z}_{max} we use the majorant of the monotone operator.

Consider each of the steps in detail.

2.1. *Transformation of the equations (5.56).* Introduce the monotone increasing operator $A(\mathbf{z}, \mathbf{u}, \mathbf{v})$ with the components:

$$A_k(\mathbf{z}, \mathbf{u}, \mathbf{v}) = \frac{z_k}{v_k} \Psi_k[\mathbf{z}, \mathbf{u}], \quad k = \overline{1, n}. \quad (5.61)$$

Represent the equations (5.56) in the form:

$$A(\mathbf{z}, \mathbf{u}, \mathbf{v}) = \mathbf{z}. \quad (5.62)$$

This equation has the unique zero-solution $\mathbf{z}^*[\mathbf{u}, \mathbf{v}] \equiv \mathbf{0}$ and the unique nonnegative solution $\mathbf{z}^*[\mathbf{u}, \mathbf{v}] \geq \mathbf{0}$. Also recall that the elements of the matrix T and of the vector \mathbf{v} in (5.39) are nonnegative.

2.2. *Choice z^0 .* According to the theorem 2 $\tilde{\mathbf{z}}$ is the solution of the equation (5.62) for $\mathbf{u}^-, \mathbf{v}^-$. So,

$$\frac{\partial}{\partial z_j} A_k(\mathbf{z}, \mathbf{u}^-, \mathbf{v}^-) |_{\tilde{\mathbf{z}}} < 1,$$

It is follows that there exists the vector

$$\mathbf{z}^0 = \tilde{\mathbf{z}} - \varepsilon, \quad (5.63)$$

where ε is a vector with small components $\varepsilon_k > 0$, such that in the ε -neighborhood $\tilde{\mathbf{z}}$ is valid the following inequality:

$$A(\mathbf{z}^0, \mathbf{u}^-, \mathbf{v}^- - \varepsilon) > \mathbf{z}^0. \quad (5.64)$$

2.3. *Choice z^{max} .* Exact value of z^{max} is defined by the solution of the global optimization problem Strongin & Sergeev (2000):

$$z^{max} = \arg \max_{\mathbf{u} \in U_+^n, \mathbf{v} \in V_+^n, j \in [1, n]} z_j^*(\mathbf{u}, \mathbf{v}),$$

where $\mathbf{z}^*(\mathbf{u}, \mathbf{v})$ is a solution of the equation:

$$\Psi(\mathbf{z}, \mathbf{u}) = \mathbf{v}.$$

However this problem is very complicated. So we will calculate an upper estimation of the value z^{max} .

Let us assume that we can find the vector $\hat{\mathbf{z}}$ such that

$$A(\hat{\mathbf{z}}, \mathbf{u}, \mathbf{v}) \leq \hat{\mathbf{z}}.$$

Choice z^{max} is equal to $\max_j \hat{z}_j$. Then the nonzero-solution \mathbf{z}^* of the equation (5.62) will belong to the following vector interval (see Krasnoselskii et al. (1969)):

$$\mathbf{z}_{min} \leq \mathbf{z}^* \leq \mathbf{z}_{max}, \quad (5.65)$$

where the vector \mathbf{z}_{max} has the components z^{max} .

For realization of the this way it is necessary to construct the *majorant* of the operator (5.61, 5.62). We use the following inequality Bellman (1961):

$$\prod_{j=1}^n h_j^{\alpha_j} \leq \sum_{j=1}^n \alpha_j h_j, \quad (\alpha_j, h_j) \geq 0, \quad \sum_{j=1}^n \alpha_j = 1. \tag{5.66}$$

Then for the operator (5.62) the following estimate is valid:

$$A(\mathbf{z}, \mathbf{u}, \mathbf{v}) \leq \mathbf{v}^{-1} \otimes C \mathbf{z}, \tag{5.67}$$

where the matrix C has the elements

$$c_{kj} = \max_{\mathbf{u}} \sum_{i=1}^m u_i t_{ki} t_{ji} = \sum_{i=1}^m t_{ki} t_{ji}, \quad (k, j) = \overline{1, n}. \tag{5.68}$$

It is follows from (5.68) that the matrix C takes a form:

$$C = T T', \tag{5.69}$$

Thus, we can consider in the capacity of $\hat{\mathbf{z}}$ the nonnegative solution of the equation:

$$C \mathbf{z} = \mathbf{v}, \quad \mathbf{z} \geq \mathbf{0}. \tag{5.70}$$

The general solution of the equation (5.70) can be represented in the following form:

$$\hat{z}_k(\mathbf{v}) = \frac{\det C^k}{\det C} \geq 0, \quad k = \overline{1, n}, \tag{5.71}$$

where

$$\det C \neq 0, \tag{5.72}$$

as the matrix T has the full rank, and

$$\det C^k = \sum_{j=1}^n a_{kj} v_j, \quad k = \overline{1, n}, \tag{5.73}$$

where

$$a_{kj} = (-1)^{(k+j)} M_{kj}, \tag{5.74}$$

and M_{kj} is the (k, j) -minor of the matrix C .

Introduce the following polyhedral sets:

$$W_+ = \left\{ \mathbf{v} : \sum_{j=1}^n a_{kj} v_j \geq 0, \quad k = \overline{1, n} \right\},$$

$$W_- = \left\{ \mathbf{v} : \sum_{j=1}^n a_{kj} v_j < 0, \quad k = \overline{1, n} \right\}. \tag{5.75}$$

and the set

$$Q = \begin{cases} V_+^n \cap W_+, & \text{if } \det C \geq 0, \\ V_+^n \cap W_-, & \text{if } \det C < 0. \end{cases} \quad (5.76)$$

From this definition it follows that the set Q is the set of the vectors \mathbf{v} for which the equation (5.70) has the nonnegative solutions. Therefore

$$z^{max} = \max_j \max_{\mathbf{v} \in Q} \hat{z}_j(\mathbf{v}). \quad (5.77)$$

Thus we proved the following **theorem 3**: Let the matrix T (5.11) has a full rank and $\mathbf{v} \in Q$ (5.76).

Then $x^{max} = \max_i x_i(\mathbf{1}, z^{max})$, where:

$$z^{max} = \max_j \max_{\mathbf{v} \in Q} \hat{z}_j(\mathbf{v}),$$

and $\hat{z}_j(\mathbf{v})$ are the solution of the linear equation

$$(T' T)\mathbf{z} = \mathbf{v}.$$

6. Conclusions

Many applied problems can be formulated as the ELP or EQP, models of which it is proposed in the paper. The multiplicative algorithms with p -active variables and feedback are the effective methods of their solution. The dynamic procedure of the image restoration from projections (IRP) increase appreciably the quality of the restored image in the presence of noise in the measurements. It is represented a classification of the dynamic procedures and it is investigated a stability of the procedure with I -feedback. Also it is shown that in general case the dynamic procedure of the IRP is the dynamic system with entropy operator (EO). The analytical- numerical methods investigation the problem of the EO-boundedness and calculation of the Lipschitz constant for EO are proposed.

7. References

- Aliev, A.S.; Dubov, Yu.A.; Izmailov, R.N.; Popkov, Yu.S. (1985). Convergence multiplicative algorithms for solving of convex programming problem, in: *Dynamics of Nonhomogeneous Systems, Proceedings of VNIISI*, pp. 59-67, Nauka, Moscow (in Russian).
- Boltzmann, L. (1871). *On the link between the second beginning of mechanical calorie theory and probability theory in theorems of thermal equilibrium*, in: *Classics of Science*, Nauka, Moscow.
- Beckenbach, E.F. & Bellman, R. (1961). *Inequalities*, Springer-Verlag, Berlin.
- Byrne, C.L. (1993). Iterative Image Reconstruction Algorithm Based on Cross-Entropy Minimization. *IEEE Trans. Img. Proc.*, Vol. 2, No. 1, pp. 96-103.
- Byrne, C. (1996). Block-iterative methods for image reconstruction from projections. *IEEE Trans. Image Processing*, Vol. 8, pp. 275-291.
- Censor Y. (1981). Row-Action Methods for Huge and Sparse Systems and Their Application. *SIAM Review*, Vol. 23, No. 4, pp. 444-464.

- Censor, Y. & Segman, J. (1987). On block-iterative entropy maximization. *J. Inform. Optim. Sci.*, Vol. 8, pp. 275-291.
- Censor, Y. & Zenios, S.A. (1997). *Parallel Optimization: Theory, Algorithms and Applications*, Oxford University Press, New York.
- Dorofeev, D.G.; Zon, B.A.; Popkov, Yu.S. (2008). Probabilistic Characteristics of Paramacrosystems. *Automation and Remote Control*, Vol. 69, No. 2, pp. 223-232.
- Dhawan, A.P. (2003). *Medical Image Analysis*. John Wiley and Sons, New York.
- Dubov, Yu.A.; Imelbaev, Sh.S.; Popkov, Yu.S. (1983). Multiplicative schemes for iterative optimization algorithms, *Soviet Math. Dokl.*, Vol. 22, No. 2, pp. 524-526.
- Fang, S.-C.; Rajasekera, J.R.; Tsao, H.S.J. (1997). *Entropy Optimization and Mathematical Programming*, Kluwer Academic Publisher, Dordrecht.
- Herman, G.T. (1980). *Image reconstruction from projections: the fundamentals of computerized tomography*, Academic Press, New York.
- Herman, G.T. (1982). Mathematical optimization versus practical performance: a case study based on the maximum entropy criterion in image reconstruction. *Mathematical Programming Study*, Vol. 20, pp. 96-112.
- Iusem, A.N.; Svaiter, B.F.; Teboulle, M. (1996). Multiplicative Interior Gradient Methods for Minimization over the Nonnegative Orthant. *SIAM J. Control and Optimization*, Vol. 34, No. 1, pp. 319-446.
- Kapur, J.N. (1989). *Maximum Entropy Models in Science and Engineering*, John Willey and Sons, New York.
- Krasnosel'skii, M.A.; Rutitski, Ja.B.; Stecenko, V.Ja.; Vainikko, G.M.; Zabreiko, P.P. (1969). *Approximate Solutions of Operator Equations*, Nauka, Moscow.
- Kullback, S. & Leibler, R.A. (1951). On Information and Sufficiency. *Annals of Mathematical Statistics*, Vol. 22(1), pp. 79-86.
- Landau, L.D. & Livshitz, E.M. (1964). *Statistical Physics*, Nauka, Moscow.
- Maslov, V.P. & Cherny, A.S. (2003). About Entropy Minimization and Maximization in the Different disciplines. *Theory of Probabilities and thier Applications*, Vol. 48, No. 3, pp. 466-486.
- Ohnuki, Y. & Kamefuchi, S. (1982). *Quantum Field and Parastatistics*, University of Tokyo Press, Berlin, Heidelberg, New York.
- Polyak, B.T. (1987). *Introduction to Optimization*, Optimization Software, New York.
- Popkov, Yu.S. (1988). A Multiplicative Algorithm for Fermi — Models of Macrosystems. *Automation and Remote Control*, Vol. 49, No. 7, Part 1, pp. 320-927.
- Popkov, Y.S. (1995). *Macrosystems Theory and Applications. Lecture Notes in Control and Information Sciences 203*, Springer, London.
- Popkov, Yu.S. (1995). Multiplicative algorithms for finding nonnegative solutions of convex programming problems. *Control and Cybernetics*, Vol. 24, No. 2, pp. 155-169.
- Popkov, Yu.S. (1996). Multiplicative algorithms for determining positive solutions of nonlinear equations. *J. of Computational and Applied Math.*, Vol. 69, pp. 27-37.
- Popkov, Yu.S. (1997). Variation Principle of Image Reconstruction from Projections. *Automation and Remote control*, No. 12, pp. 131-139.
- Popkov, Y.S. (2006). New class of multiplicative algorithms for solving of entropy-linear programs. *European Journal of Operation Research*, Vol. 174, pp. 1368-1379.
- Shannon, C.E. (1948). Mathematical Theory of Communication. *Bell System Technical Journal*, Vol. 27(1):379-423, pp. 623-656.

Strongin, R.G. & Sergeev, Y.D. (2000). *Global Optimization with Non-convex Constraints*, Kluwer Acad. Press.

Voevodin, V.V. & Kuznetsov, Yu.A. (1984). *Matrix and calculations*, p. 318, Nauka, Moscow (in Russian).

Wilkinson, J.H. (1970). *The Algebraic Eigenvalue Problem*, p. 564, Clarendon Press, Oxford.

IntechOpen

IntechOpen

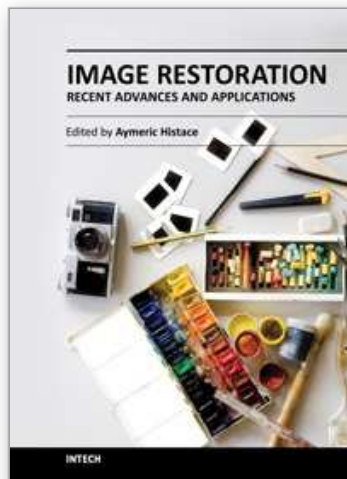


Image Restoration - Recent Advances and Applications

Edited by Dr Aymeric Histace

ISBN 978-953-51-0388-2

Hard cover, 372 pages

Publisher InTech

Published online 04, April, 2012

Published in print edition April, 2012

This book represents a sample of recent contributions of researchers all around the world in the field of image restoration. The book consists of 15 chapters organized in three main sections (Theory, Applications, Interdisciplinarity). Topics cover some different aspects of the theory of image restoration, but this book is also an occasion to highlight some new topics of research related to the emergence of some original imaging devices. From this arise some real challenging problems related to image reconstruction/restoration that open the way to some new fundamental scientific questions closely related with the world we interact with.

How to reference

In order to correctly reference this scholarly work, feel free to copy and paste the following:

Yuri S. Popkov (2012). Entropic Image Restoration as a Dynamic System with Entropy Operator, Image Restoration - Recent Advances and Applications, Dr Aymeric Histace (Ed.), ISBN: 978-953-51-0388-2, InTech, Available from: <http://www.intechopen.com/books/image-restoration-recent-advances-and-applications/entropic-image-restoration-as-a-dynamic-system-with-entropy-operator>

INTECH
open science | open minds

InTech Europe

University Campus STeP Ri
Slavka Krautzeka 83/A
51000 Rijeka, Croatia
Phone: +385 (51) 770 447
Fax: +385 (51) 686 166
www.intechopen.com

InTech China

Unit 405, Office Block, Hotel Equatorial Shanghai
No.65, Yan An Road (West), Shanghai, 200040, China
中国上海市延安西路65号上海国际贵都大饭店办公楼405单元
Phone: +86-21-62489820
Fax: +86-21-62489821

© 2012 The Author(s). Licensee IntechOpen. This is an open access article distributed under the terms of the [Creative Commons Attribution 3.0 License](#), which permits unrestricted use, distribution, and reproduction in any medium, provided the original work is properly cited.

IntechOpen

IntechOpen