

# We are IntechOpen, the world's leading publisher of Open Access books Built by scientists, for scientists

**4,800**

Open access books available

**122,000**

International authors and editors

**135M**

Downloads

Our authors are among the

**154**

Countries delivered to

**TOP 1%**

most cited scientists

**12.2%**

Contributors from top 500 universities



**WEB OF SCIENCE™**

Selection of our books indexed in the Book Citation Index  
in Web of Science™ Core Collection (BKCI)

Interested in publishing with us?  
Contact [book.department@intechopen.com](mailto:book.department@intechopen.com)

Numbers displayed above are based on latest data collected.

For more information visit [www.intechopen.com](http://www.intechopen.com)



# Intracranial Atherosclerotic Stroke - Hemodynamic Features and Role of MR Angiography

Suk Jae Kim and Oh Young Bang

Department of Neurology, Samsung Medical Center

Sungkyunkwan University, Seoul,

South Korea

## 1. Introduction

Intracranial atherosclerotic stroke (ICAS) is responsible for ischemic stroke in 10~33%.<sup>1-3</sup> ICAS occurs in association with various stroke mechanisms, such as in situ thrombotic occlusion, artery-to-artery embolism, hemodynamic insufficiency, and branch occlusion.<sup>4</sup> Various radiologic stroke patterns are associated with ICAS, from single and small subcortical perforator infarctions to multiple cortical infarctions [Figure 1].<sup>5,6</sup>

The characteristics of ICAS and the role of MRI and magnetic resonance angiography (MRA) are discussed herein.

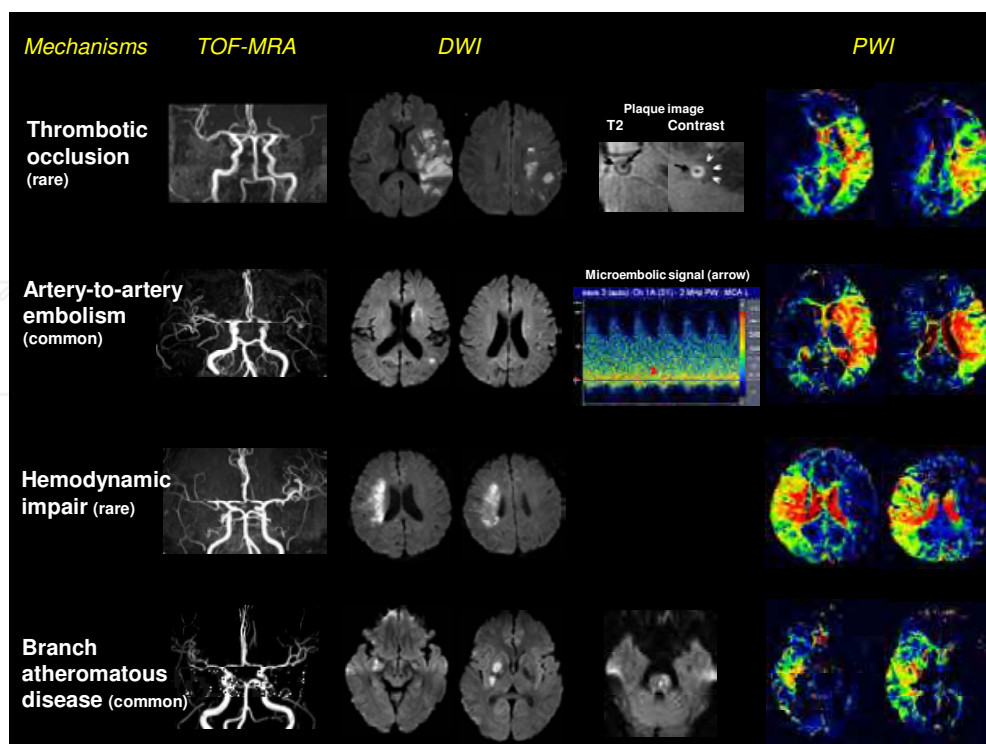


Fig. 1. Various mechanisms of stroke in patients with intracranial atherosclerosis.

## 2. Hemodynamic characteristics of ICAS

Despite of the diversity in stroke mechanisms of ICAS, ICAS has unique hemodynamics features compared to other stroke subtypes.

### 2.1 Pre-stroke hemodynamic status in patients with intracranial atherosclerosis

The balance of occlusion and collaterals determines the hemodynamic circumstance or blood flow changes that challenge the brain. Depending on the time course, such changes may have radically discrepant effects. Collateral circulation is a potent determinant of recurrent stroke risk in symptomatic ICAS, demonstrating a protective role with severe stenoses and identifying more unstable milder stenosis.<sup>7</sup> In addition, there are increasing evidences that ischemic preconditioning can induce tolerance by raising the threshold of tissue vulnerability in human brain.<sup>8-10</sup> Although ischemic brain injuries resulting from focal decrease in perfusion cause ischemic brain damage, patients with preceding less severe ischemic stimuli (i.e. transient ischemic attacks) showed less likely to have stroke and more likely to have good outcome after stroke.<sup>8, 11</sup> Longstanding hemodynamic compromise which was frequently observed in intracranial atherosclerosis may elicit collateral development and preconditioning to adapt to recurrent ischemia.<sup>12</sup> Thus, it is conceivable that patients with intracranial atherosclerosis may be 'prepared' and 'preconditioned' for the risk of subsequent stroke.

### 2.2 Hemodynamic feature in patients with ICAS

The most common techniques for imaging the ischemic penumbra in acute ischemic patients are (a) combined diffusion-weighted imaging (DWI) and perfusion-weighted imaging (PWI) and (b) combined DWI and MRA.<sup>13-15</sup> ICAS had a typical PWI-DWI (a large mismatch region but less severe hypoperfusion) and MRA-DWI mismatch profiles (a stenosis or occlusion of large intracranial vessels but a small core region), which have been reported to be associated with favorable outcomes after recanalization therapy.<sup>16, 17</sup> The differences in PWI-DWI and MRA-DWI mismatch profiles between ICAS and other stroke mechanisms may be related to differences in pretreatment collateral flow status [FIGURE 2].<sup>17</sup> Moreover, patients with ICAS had increased CBV when compared to patients with cardioembolic stroke.<sup>18</sup> Patients with ICAS had a good collateral grade than those with other subtypes.<sup>17, 19, 20</sup>

### 2.3 Stroke evolution, outcomes and recurrence after ICAS

There were two types of stroke evolution had different pathophysiological mechanisms.<sup>21</sup> Specifically, the large mild perfusion delay was associated with new lesions, whereas the large initial DWI lesions and a severe perfusion delay were associated with lesion growth.<sup>21</sup> Because patients with ICAS had relatively mild perfusion delay in their pretreatment MRI that were related to mostly multiple and small recurrent lesions, they may had minimal infarct growth [Figure 2].<sup>16</sup> Similarly, ICAS as a stroke mechanism resulted in favorable clinical outcomes. Benign pretreatment MR profiles which were associated with good collaterals of ICAS patients may explain these results.<sup>16</sup>

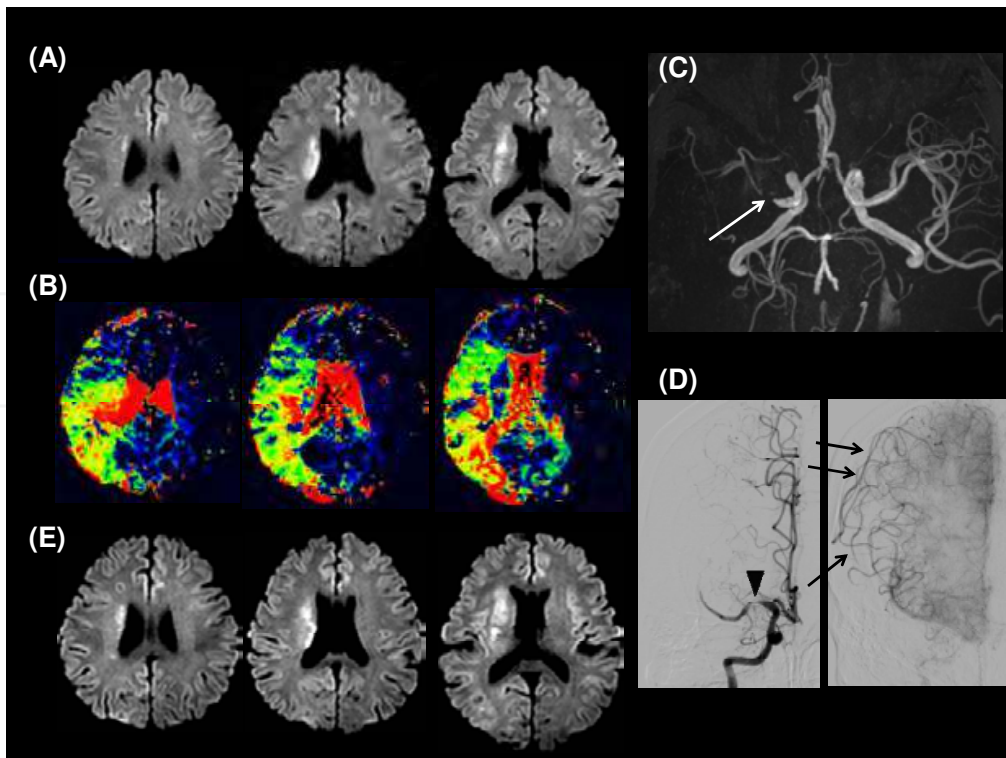


Fig. 2. Typical examples of intracranial atherosclerotic stroke. Initial MR shows typical PWI (B)-DWI (A) (a large salvageable area but less severe hypoperfusion) and MRA (C)-DWI (A) (a severe stenosis of right middle cerebral artery (white arrow) but a small core region). Digital subtraction angiography (D) demonstrates a severe stenosis in the same location (arrow head, arterial phase) and adequate leptomeningeal collateral flow from right anterior cerebral artery (black arrows, capillary phase). Follow-up DWI (E) reveals minimal infarct growth.

On the contrary, recurrent ischemic lesions during the first week after the onset of stroke in ICAS are relatively frequent compared to other stroke subtypes.<sup>22</sup> In clinical aspects, many patients with ICAS have recurrent cerebral ischemic events despite standard medical therapy with antiplatelet agents or oral anticoagulants.<sup>23</sup> The pattern of recurrence differed between intracranial and extracranial atherosclerotic stroke.<sup>22, 24</sup> Unlike the patients with carotid atherosclerosis who were unpredictable with respect to the site of recurrence and degree of preexisting stenosis, patients with ICAS usually recurred within the same territory as the index stroke which was associated with progression of stenosis.<sup>5, 22, 24, 25</sup> Collateral circulation is a potent determinant of recurrent stroke risk in symptomatic ICAS, demonstrating a protective role with severe stenoses and identifying more unstable milder stenosis.<sup>7</sup>

### 3. Vascular imaging in patients with ICAS

#### 3.1 Vascular studies for luminal imaging

Digital subtraction angiography (DSA) is the current gold standard for the diagnosis of intracranial atherosclerosis. However, DSA is invasive and carries the risk of stroke. Along with transcranial Doppler (TCD) and computed tomographic angiography (CTA), MRA is

less invasive techniques and has emerged as a more popular modality for visualization of intracranial vessels [Figure 3].

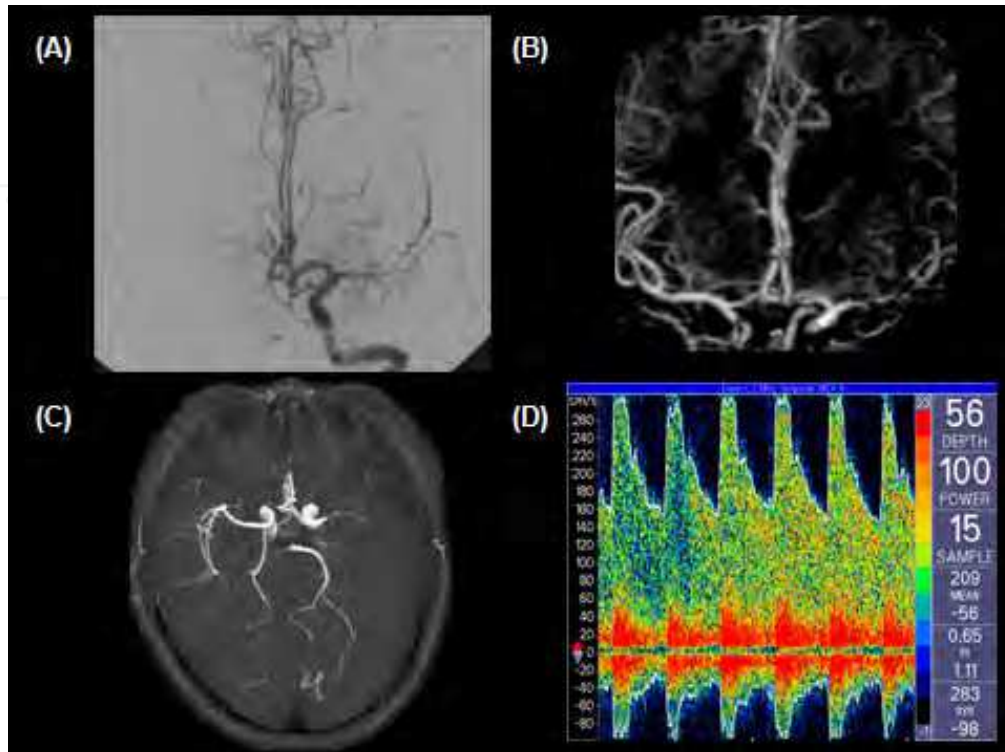


Fig. 3. A patient with intracranial stenosis on the left proximal middle cerebral artery. (A) DSA, (B) CTA, (C) TOF MRA, and (D) TCD findings.

Two MRA techniques used to detect intracranial stenosis are the 3D time-of-flight (TOF) MRA and contrast-enhanced MRA (CE-MRA). The Stroke Outcomes and Neuroimaging of Intracranial Atherosclerosis (SONIA) trial compared the accuracy of TOF MRA with DSA. SONIA demonstrated that TOF MRA have a good negative predictive value (89-93%) for excluding the presence of 50 to 99% intracranial atherosclerotic stenosis but relatively low positive predictive value (54-65%).<sup>26, 27</sup> CE-MRA is less studied for intracranial vessels because of technical issues. It has been thought that CE-MRA can lessen the problem of overestimation of the length and degree of stenosis, a common obstacle with 3D-TOF MRA by decreased dependence of flow signal intensity and T1 shortening effects of fat and calcium.<sup>28, 29</sup> However, recent studies suggested that TOF MRA provides comparable diagnostic performance with CE-MRA for intracranial stenosis with development of various TOF MRA sequence.<sup>30, 31</sup>

Recent advances in MRI techniques enable visualization of small perforating vessels originated from large intracranial arteries [Figure 4 D].<sup>32</sup> The Warfarin-Aspirin Symptomatic Intracranial Disease (WASID) trial investigators showed that the degree of stenosis (the presence of severe stenosis of  $\geq 70\%$ ) was associated with subsequent ischemic stroke in the territory of the stenotic artery.<sup>33</sup> On the contrary, not only stenosis of severe degree but also stenosis of a milder degree on the symptomatic vessels should be taken into account, especially in patients with deep infarcts (branch occlusive disease). Physicians may consider a mild degree of stenosis to be irrelevant. However, large intracranial arteries have many



deep perforators, and mild stenosis may occlude these deep perforators' orifices, resulting in stroke in the absence of plaque rupture or platelet activation. A follow-up study of patients with various subtypes of ischemic stroke demonstrated that, in patients with diagnoses of lacunar stroke at the time of their index strokes, physicians often found intracranial stenoses upon these patients' recurrences.<sup>34</sup>

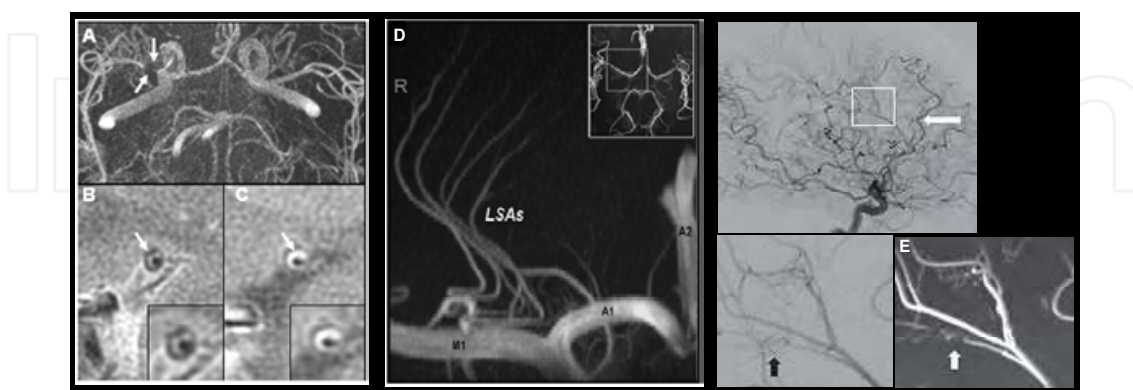


Fig. 4. Application of high resolution MRI. Contrast-enhanced MRI for plaque image (A-C), and 7-tesla MRA for small perforating arteries (D) and pial branches of leptomeningeal collaterals (E).

### 3.2 MRI for wall/plaque image

Patients with ICAS often have tandem lesions. Based on MRA, 65 out of 238 patients (27.3%) had coexistent asymptomatic intracranial stenosis. During a mean follow-up period of 1.8 years, 5 ischemic strokes (5.9%) occurred in the asymptomatic intracranial atherosclerotic stenosis territory (risk at 1 year=3.5%).<sup>35</sup> Thus, it is important to differentiate 'high-risk' stenosis and so called 'stable' (low-risk) stenosis.

There has been a growing body of interest in the role of MRI for imaging the vessel wall or the plaque. Autopsy series observed atherosclerotic plaques in intracranial vessels of 45.5-62.5% of subjects.<sup>36,37</sup> High-resolution MRI could provide the information on the presence and the volume of plaque.<sup>38, 39</sup> Plaque was clearly identified as plaque enhancement after gadolinium injection [Figure 4 A~C].<sup>39</sup>

MRI for plaque imaging is a potentially promising tool that can be used in clinical practice for patients with ICAS. First, this can be useful in evaluating the mechanisms of stroke, i.e. demonstrating the presence of intracranial plaque in patients with cryptogenic stroke. High-resolution MRI to determine the presence of plaque revealed that MRI detects basilar artery plaques in 42% of patients with pontine infarctions and normal basilar angiograms.<sup>38</sup> Second, this technique can help physician to identify the vulnerable plaque in the intracranial vessels. A recent study showed that all patients with ICAS have eccentric enhancing plaques when imaging is performed within weeks to months of cerebral infarcts within the artery territory, but none of asymptomatic plaques had enhancement.<sup>40</sup> Moreover, remodeling mode of intracranial atherosclerosis can be identified using high-resolution MRI. It has been well known that atherosclerotic narrowing of arterial lumen is not a simple consequence of enlargement of atherosclerotic burden.<sup>41</sup> Recent investigations with patients with intracranial atherosclerotic stenosis revealed that some compensatory enlargement of vessels (positive remodeling) which is associated with more lipid-rich

plaques<sup>42, 43</sup> was more frequently observed in symptomatic patients compared with asymptomatic ones.<sup>44, 45</sup> Lastly, risk factors for the presence of intracranial plaque have been reported<sup>36</sup> and several drug therapies (i.e. statin) could modify plaque stability. In addition, the effects of such therapeutic intervention could be monitored using high-resolution MRI.

### 3.3 Collateral image

MRA can evaluate the cerebral collateral circulation in the circle of Willis. With phase contrast MRA, flow direction information can be obtained by the phase changes in blood water protons in the different arterial segments of the circle of Willis.<sup>46</sup> Although MRA have moderate to good diagnostic performance for the presence of collateral flow via the anterior circle of Willis, MRA tends to underestimate the presence of collateral flow with respect to the posterior communicating artery. Compared to conventional angiography which is considered as a gold standard for the assessment of collaterals, MRA collateral flow measurements via the anterior part of the circle of Willis yielded a sensitivity, specificity, positive predictive value, negative predictive value and accuracy of 83%, 77%, 78%, 82% and 80%, respectively. On the other hand, MRA collateral flow measurements via the posterior communicating artery yielded a sensitivity, specificity, positive predictive value, negative predictive value and accuracy of 33%, 88%, 89%, 31% and 47%, respectively.<sup>47-49</sup> Recently, vessel-encoded arterial spin labeling technique was developed to assess collateral circulations.<sup>50-52</sup>

Beside the collateral circulation via the circle of Willis, leptomeningeal collaterals also play an important role in patients with ICAS. The leptomeningeal collateral can be visualized using a dedicated MRI method (subtracting the image of the first movement map).<sup>53</sup> Beside the vessel images, various MRI parameters can indirectly reflect the collateral status, e.g. DWI, PWI, and FLAIR. We found that, compared to the large cortical DWI pattern, the deep-infarcts pattern exhibited less severe hypoperfusion related to good collateral flows.<sup>54</sup> In addition, distal hyperintense vessels on fluid-attenuated inversion recovery image likely represent excessively slow flow induced by retrograde collateral flow distal to the occlusion of a proximal artery, and may be associated with leptomeningeal collaterals and response to thrombolysis.<sup>55, 56</sup> A recent study using 7-tesla MRI directly visualized the pial branches, indicating the possibility of assessment of leptomeningeal collaterals with high-resolution MRA [Figure 4 E].<sup>57</sup>

## 4. Conclusion

Patients with ICAS often received the same treatment as those with extracranial carotid atherosclerosis. However, there are accumulating evidences that hemodynamic features as well as stroke mechanisms may differ between ICAS and other stroke subtypes.<sup>24, 58, 59</sup> Using MRI techniques to understanding pathophysiologies, hemodynamic status, and vascular pathology (via both luminal and wall imaging) will allow the future development of rational stroke therapies for patients with ICAS.

## 5. References

- [1] Sacco RL, Kargman DE, Gu Q, Zamanillo MC. Race-ethnicity and determinants of intracranial atherosclerotic cerebral infarction. The northern manhattan stroke study. *Stroke*. 1995;26:14-20

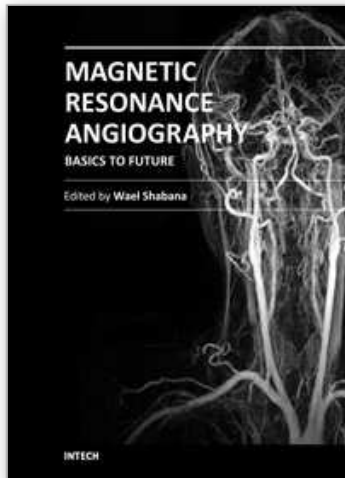
- [2] Wityk RJ, Lehman D, Klag M, Coresh J, Ahn H, Litt B. Race and sex differences in the distribution of cerebral atherosclerosis. *Stroke*. 1996;27:1974-1980
- [3] Wong KS, Huang YN, Gao S, Lam WW, Chan YL, Kay R. Intracranial stenosis in chinese patients with acute stroke. *Neurology*. 1998;50:812-813
- [4] Kim JS CL, Wong KS, eds. *Intracranial atherosclerosis*. Wiley-Blackwell: John Wiley and Sons, Ltd.; 2008.
- [5] Wong KS, Gao S, Chan YL, Hansberg T, Lam WW, Droste DW, Kay R, Ringelstein EB. Mechanisms of acute cerebral infarctions in patients with middle cerebral artery stenosis: A diffusion-weighted imaging and microemboli monitoring study. *Ann Neurol*. 2002;52:74-81
- [6] Bang OY, Heo JH, Kim JY, Park JH, Huh K. Middle cerebral artery stenosis is a major clinical determinant in striatocapsular small, deep infarction. *Arch Neurol*. 2002;59:259-263
- [7] Liebeskind DS, Cotsonis GA, Saver JL, Lynn MJ, Turan TN, Cloft HJ, Chimowitz MI. Collaterals dramatically alter stroke risk in intracranial atherosclerosis. *Ann Neurol*. 2011;69:963-974
- [8] Dirnagl U, Becker K, Meisel A. Preconditioning and tolerance against cerebral ischaemia: From experimental strategies to clinical use. *Lancet Neurol*. 2009;8:398-412
- [9] Gidday JM. Cerebral preconditioning and ischaemic tolerance. *Nat Rev Neurosci*. 2006;7:437-448
- [10] Kharbanda RK, Nielsen TT, Redington AN. Translation of remote ischaemic preconditioning into clinical practice. *Lancet*. 2009;374:1557-1565
- [11] Wegener S, Gottschalk B, Jovanovic V, Knab R, Fiebich JB, Schellinger PD, Kucinski T, Jungehulsing GJ, Brunecker P, Muller B, Banasik A, Amberger N, Wernecke KD, Siebler M, Rother J, Villringer A, Weih M. Transient ischemic attacks before ischemic stroke: Preconditioning the human brain? A multicenter magnetic resonance imaging study. *Stroke*. 2004;35:616-621
- [12] Liebeskind DS. Imaging the future of stroke: I. Ischemia. *Ann Neurol*. 2009;66:574-590
- [13] Albers GW, Thijs VN, Wechsler L, Kemp S, Schlaug G, Skalabrin E, Bammer R, Kakuda W, Lansberg MG, Shuaib A, Coplin W, Hamilton S, Moseley M, Marks MP. Magnetic resonance imaging profiles predict clinical response to early reperfusion: The diffusion and perfusion imaging evaluation for understanding stroke evolution (defuse) study. *Ann Neurol*. 2006;60:508-517
- [14] Bang OY. Multimodal mri for ischemic stroke: From acute therapy to preventive strategies. *J Clin Neurol*. 2009;5:107-119
- [15] Lansberg MG, Thijs VN, Bammer R, Olivot JM, Marks MP, Wechsler LR, Kemp S, Albers GW. The mra-dwi mismatch identifies patients with stroke who are likely to benefit from reperfusion. *Stroke*. 2008;39:2491-2496
- [16] Kim SJ, Ryoo S, Kim GM, Chung CS, Lee KH, Bang OY. Clinical and radiological outcomes after intracranial atherosclerotic stroke: A comprehensive approach comparing stroke subtypes. *Cerebrovasc Dis*. 2011;31:427-434
- [17] Kim SJ, Seok JM, Bang OY, Kim GM, Kim KH, Jeon P, Chung CS, Lee KH, Alger JR, Liebeskind DS. Mr mismatch profiles in patients with intracranial atherosclerotic stroke: A comprehensive approach comparing stroke subtypes. *J Cereb Blood Flow Metab*. 2009;29:1138-1145



- [18] Liebeskind DS, Alger JR, Kim GM, Sanossian N, Chung CS, Lee KH, Bang OY. Collateral perfusion and cerebral blood volume diminish infarct core and penumbra in acute ischemic stroke due to intracranial atherosclerosis. *Stroke*. 2009;40:e119
- [19] Choi JW, Kim JK, Choi BS, Lim HK, Kim SJ, Kim JS, Suh DC. Angiographic pattern of symptomatic severe m1 stenosis: Comparison with presenting symptoms, infarct patterns, perfusion status, and outcome after recanalization. *Cerebrovasc Dis*. 2010;29:297-303
- [20] Liebeskind DS, Cotsonis GA, Saver JL, Lynn MJ, Cloft HJ, Chimowitz MI. Collateral circulation in symptomatic intracranial atherosclerosis. *J Cereb Blood Flow Metab*. 2011;31:1293-1301
- [21] Bang OY, Kim GM, Chung CS, Kim SJ, Kim KH, Jeon P, Saver JL, Liebeskind DS, Lee KH. Differential pathophysiological mechanisms of stroke evolution between new lesions and lesion growth: Perfusion-weighted imaging study. *Cerebrovasc Dis*. 2010;29:328-335
- [22] Kang DW, Kwon SU, Yoo SH, Kwon KY, Choi CG, Kim SJ, Koh JY, Kim JS. Early recurrent ischemic lesions on diffusion-weighted imaging in symptomatic intracranial atherosclerosis. *Arch Neurol*. 2007;64:50-54
- [23] Chimowitz MI, Lynn MJ, Howlett-Smith H, Stern BJ, Hertzberg VS, Frankel MR, Levine SR, Chaturvedi S, Kasner SE, Benesch CG, Sila CA, Jovin TG, Romano JG. Comparison of warfarin and aspirin for symptomatic intracranial arterial stenosis. *N Engl J Med*. 2005;352:1305-1316
- [24] Shin DH, Lee PH, Bang OY. Mechanisms of recurrence in subtypes of ischemic stroke: A hospital-based follow-up study. *Arch Neurol*. 2005;62:1232-1237
- [25] Wong KS, Li H, Lam WW, Chan YL, Kay R. Progression of middle cerebral artery occlusive disease and its relationship with further vascular events after stroke. *Stroke*. 2002;33:532-536
- [26] Feldmann E, Wilterdink JL, Kosinski A, Lynn M, Chimowitz MI, Sarafin J, Smith HH, Nichols F, Rogg J, Cloft HJ, Wechsler L, Saver J, Levine SR, Tegeler C, Adams R, Sloan M. The stroke outcomes and neuroimaging of intracranial atherosclerosis (sonia) trial. *Neurology*. 2007;68:2099-2106
- [27] Qureshi AI, Feldmann E, Gomez CR, Johnston SC, Kasner SE, Quick DC, Rasmussen PA, Suri MF, Taylor RA, Zaidat OO. Intracranial atherosclerotic disease: An update. *Ann Neurol*. 2009;66:730-738
- [28] Jung HW, Chang KH, Choi DS, Han MH, Han MC. Contrast-enhanced mr angiography for the diagnosis of intracranial vascular disease: Optimal dose of gadopentetate dimeglumine. *AJR Am J Roentgenol*. 1995;165:1251-1255
- [29] Bash S, Villablanca JP, Jahan R, Duckwiler G, Tillis M, Kidwell C, Saver J, Sayre J. Intracranial vascular stenosis and occlusive disease: Evaluation with ct angiography, mr angiography, and digital subtraction angiography. *AJNR Am J Neuroradiol*. 2005;26:1012-1021
- [30] Choi J, Lim, SM, Kim, Y. Comparison of 3d tof mra with contrast enhanced mra in intracranial atherosclerotic occlusive disease. *J Korean Soc Radiol*. 2011;64:203-211
- [31] Babiarz LS, Romero JM, Murphy EK, Brobeck B, Schaefer PW, Gonzalez RG, Lev MH. Contrast-enhanced mr angiography is not more accurate than unenhanced 2d time-

- of-flight mr angiography for determining  $>$  or  $=$  70% internal carotid artery stenosis. *AJNR Am J Neuroradiol.* 2009;30:761-768
- [32] Cho ZH, Kang CK, Han JY, Kim SH, Kim KN, Hong SM, Park CW, Kim YB. Observation of the lenticulostriate arteries in the human brain in vivo using 7.0t mr angiography. *Stroke.* 2008;39:1604-1606
- [33] Kasner SE, Chimowitz MI, Lynn MJ, Howlett-Smith H, Stern BJ, Hertzberg VS, Frankel MR, Levine SR, Chaturvedi S, Benesch CG, Sila CA, Jovin TG, Romano JG, Cloft HJ. Predictors of ischemic stroke in the territory of a symptomatic intracranial arterial stenosis. *Circulation.* 2006;113:555-563
- [34] Shin DH, Lee PH, Bang OY. Mechanisms of recurrence in subtypes of ischemic stroke: A hospital-based follow-up study. *Archives of neurology.* 2005;62:1232-1237
- [35] Nahab F, Cotsonis G, Lynn M, Feldmann E, Chaturvedi S, Hemphill JC, Zweifler R, Johnston K, Bonovich D, Kasner S, Chimowitz M. Prevalence and prognosis of coexistent asymptomatic intracranial stenosis. *Stroke.* 2008;39:1039-1041
- [36] Mazighi M, Labreuche J, Gongora-Rivera F, Duyckaerts C, Hauw JJ, Amarenco P. Autopsy prevalence of intracranial atherosclerosis in patients with fatal stroke. *Stroke.* 2008;39:1142-1147
- [37] Chen XY, Wong KS, Lam WW, Zhao HL, Ng HK. Middle cerebral artery atherosclerosis: Histological comparison between plaques associated with and not associated with infarct in a postmortem study. *Cerebrovasc Dis.* 2008;25:74-80
- [38] Klein IF, Lavalley PC, Mazighi M, Schouman-Claeys E, Labreuche J, Amarenco P. Basilar artery atherosclerotic plaques in paramedian and lacunar pontine infarctions: A high-resolution mri study. *Stroke.* 2010;41:1405-1409
- [39] Klein IF, Lavalley PC, Touboul PJ, Schouman-Claeys E, Amarenco P. In vivo middle cerebral artery plaque imaging by high-resolution mri. *Neurology.* 2006;67:327-329
- [40] Vergouwen MD, Silver FL, Mandell DM, Mikulis DJ, Swartz RH. Eccentric narrowing and enhancement of symptomatic middle cerebral artery stenoses in patients with recent ischemic stroke. *Arch Neurol.* 2011;68:338-342
- [41] Glagov S, Weisenberg E, Zarins CK, Stankunavicius R, Kolettis GJ. Compensatory enlargement of human atherosclerotic coronary arteries. *N Engl J Med.* 1987;316:1371-1375
- [42] Burke AP, Kolodgie FD, Farb A, Weber D, Virmani R. Morphological predictors of arterial remodeling in coronary atherosclerosis. *Circulation.* 2002;105:297-303
- [43] Takeuchi H, Morino Y, Matsukage T, Masuda N, Kawamura Y, Kasai S, Hashida T, Fujibayashi D, Tanabe T, Ikari Y. Impact of vascular remodeling on the coronary plaque compositions: An investigation with in vivo tissue characterization using integrated backscatter-intravascular ultrasound. *Atherosclerosis.* 2009;202:476-482
- [44] Ma N, Jiang WJ, Lou X, Ma L, Du B, Cai JF, Zhao TQ. Arterial remodeling of advanced basilar atherosclerosis: A 3-tesla mri study. *Neurology.* 2010;75:253-258
- [45] Xu WH, Li ML, Gao S, Ni J, Zhou LX, Yao M, Peng B, Feng F, Jin ZY, Cui LY. In vivo high-resolution mr imaging of symptomatic and asymptomatic middle cerebral artery atherosclerotic stenosis. *Atherosclerosis.* 2010;212:507-511
- [46] Sallustio F, Kern R, Gunther M, Szabo K, Griebel M, Meairs S, Hennerici M, Gass A. Assessment of intracranial collateral flow by using dynamic arterial spin labeling mra and transcranial color-coded duplex ultrasound. *Stroke.* 2008;39:1894-1897

- [47] Patruș B, Laissy JP, Jouini S, Kawiecki W, Coty P, Thiebot J. Magnetic resonance angiography (mra) of the circle of willis: A prospective comparison with conventional angiography in 54 subjects. *Neuroradiology*. 1994;36:193-197
- [48] Hartkamp MJ, van Der Grond J, van Everdingen KJ, Hillen B, Mali WP. Circle of willis collateral flow investigated by magnetic resonance angiography. *Stroke*. 1999;30:2671-2678
- [49] Hendrikse J, Klijn CJ, van Huffelen AC, Kappelle LJ, van der Grond J. Diagnosing cerebral collateral flow patterns: Accuracy of non-invasive testing. *Cerebrovasc Dis*. 2008;25:430-437
- [50] Chng SM, Petersen ET, Zimine I, Sitoh YY, Lim CC, Golay X. Territorial arterial spin labeling in the assessment of collateral circulation: Comparison with digital subtraction angiography. *Stroke*. 2008;39:3248-3254
- [51] Kansagra AP, Wong EC. Quantitative assessment of mixed cerebral vascular territory supply with vessel encoded arterial spin labeling mri. *Stroke*. 2008;39:2980-2985
- [52] Wu B, Wang X, Guo J, Xie S, Wong EC, Zhang J, Jiang X, Fang J. Collateral circulation imaging: Mr perfusion territory arterial spin-labeling at 3t. *AJNR Am J Neuroradiol*. 2008;29:1855-1860
- [53] Christensen S, Calamante F, Hjort N, Wu O, Blankholm AD, Desmond P, Davis S, Ostergaard L. Inferring origin of vascular supply from tracer arrival timing patterns using bolus tracking mri. *J Magn Reson Imaging*. 2008;27:1371-1381
- [54] Bang OY, Saver JL, Alger JR, Starkman S, Ovbiagele B, Liebeskind DS. Determinants of the distribution and severity of hypoperfusion in patients with ischemic stroke. *Neurology*. 2008;71:1804-1811
- [55] Lee KY, Latour LL, Luby M, Hsia AW, Merino JG, Warach S. Distal hyperintense vessels on flair: An mri marker for collateral circulation in acute stroke? *Neurology*. 2009;72:1134-1139
- [56] Liebeskind DS. Location, location, location: Angiography discerns early mr imaging vessel signs due to proximal arterial occlusion and distal collateral flow. *AJNR Am J Neuroradiol*. 2005;26:2432-2433; author reply 2433-2434
- [57] Song HS, Kang CK, Kim JS, Park CA, Kim YB, Lee DH, Kang DW, Kwon SU, Cho ZH. Assessment of pial branches using 7-tesla mri in cerebral arterial disease. *Cerebrovasc Dis*. 2010;29:410
- [58] Bang OY, Kim JW, Lee JH, Lee MA, Lee PH, Joo IS, Huh K. Association of the metabolic syndrome with intracranial atherosclerotic stroke. *Neurology*. 2005;65:296-298
- [59] Bang OY, Lee PH, Yoon SR, Lee MA, Joo IS, Huh K. Inflammatory markers, rather than conventional risk factors, are different between carotid and mca atherosclerosis. *J Neurol Neurosurg Psychiatry*. 2005;76:1128-1134



## **Magnetic Resonance Angiography Basics to Future**

Edited by Prof. Wael Shabana

ISBN 978-953-51-0401-8

Hard cover, 94 pages

**Publisher** InTech

**Published online** 21, March, 2012

**Published in print edition** March, 2012

As MRI has paved its role in diagnostic angiography. MRA has the potential to provide more physiological and pathophysiological data over the disease in addition to the anatomical information. This book is divided into three sections. The first section discusses the basics of MRI angiography. It starts with focus on the contrast agents that are mainly used in MR angiography with detailed discussion of advantage and limitations of different types of contrast. The second chapter is oriented more towards the technical consideration that contribute to good quality examination, both the non contrast and contrast based sequences from black to bright blood imaging , contrast enhanced MRA, review of clinical application of MRA in different body systems and MR venography. The second section reviews the clinical application of MRI mainly in the head and neck and brain ischemia imaging. The new high resolution intracranial plaque imaging of the branch athermanous disease, to the hemodynamic of intracranial atherosclerotic stroke and quantitative MRA imaging in neurovascular imaging, are the topics in this section. Also this section covers the future prospective and the new frontiers MRI angiography is exploring. In the third section, MRA of aortic disease in children with emphasis on cardiac MRA.

### **How to reference**

In order to correctly reference this scholarly work, feel free to copy and paste the following:

Suk Jae Kim and Oh Young Bang (2012). Intracranial Atherosclerotic Stroke - Hemodynamic Features and Role of MR Angiography, Magnetic Resonance Angiography Basics to Future, Prof. Wael Shabana (Ed.), ISBN: 978-953-51-0401-8, InTech, Available from: <http://www.intechopen.com/books/magnetic-resonance-angiography-basics-to-future/intracranial-atherosclerotic-stroke-hemodynamic-features-and-role-of-mr-angiography>

**INTECH**  
open science | open minds

### **InTech Europe**

University Campus STeP Ri  
Slavka Krautzeka 83/A  
51000 Rijeka, Croatia  
Phone: +385 (51) 770 447  
Fax: +385 (51) 686 166  
[www.intechopen.com](http://www.intechopen.com)

### **InTech China**

Unit 405, Office Block, Hotel Equatorial Shanghai  
No.65, Yan An Road (West), Shanghai, 200040, China  
中国上海市延安西路65号上海国际贵都大饭店办公楼405单元  
Phone: +86-21-62489820  
Fax: +86-21-62489821

© 2012 The Author(s). Licensee IntechOpen. This is an open access article distributed under the terms of the [Creative Commons Attribution 3.0 License](#), which permits unrestricted use, distribution, and reproduction in any medium, provided the original work is properly cited.

IntechOpen

IntechOpen