

We are IntechOpen, the world's leading publisher of Open Access books Built by scientists, for scientists

4,800

Open access books available

122,000

International authors and editors

135M

Downloads

Our authors are among the

154

Countries delivered to

TOP 1%

most cited scientists

12.2%

Contributors from top 500 universities



WEB OF SCIENCE™

Selection of our books indexed in the Book Citation Index
in Web of Science™ Core Collection (BKCI)

Interested in publishing with us?
Contact book.department@intechopen.com

Numbers displayed above are based on latest data collected.

For more information visit www.intechopen.com



Evaluation and Management of Lower Back Pain in Oncological Patients

Joshua E. Schroeder¹, Yair Barzilay¹, Amir Hasharoni¹,
Leon Kaplan¹, José E. Cohen² and Eyal Itshayek²

¹Departments of Orthopedic Surgery,
Hadassah – Hebrew University Medical Center Jerusalem,

²Departments of Neurosurgery,
Hadassah – Hebrew University Medical Center Jerusalem,
Israel

1. Introduction

Back pain is one of the most common complaints that brings patients to be examined by a physician (Moore, 2010). Pain may originate from a variety of tissues, including intervertebral disks, vertebrae, ligaments, neural structures, muscles, and fascia, or present as referred pain from adjacent pathology, such as peptic ulcers, pancreatitis, pyelonephritis, aortic aneurysm, and more (Henschke, et al., 2009). Nonspecific low back pain is typically managed with symptomatic care and physical therapy, with up to 90% of patients improving substantially over 3 months. It is such a common condition that the American College of Physicians has issued guidelines with a mandate against imaging patients for the first month after pain onset (Chou, 2010).

Serious, life-threatening diseases are uncommon causes of back pain; malignancy, ankylosing spondylitis, and infection together account for less than 5% of back pain cases in a typical primary care practice (Dagenais, et al., 2010). However, missing such a critical diagnosis represents a serious concern for every practitioner; thus complaints of back pain often lead to multiple imaging studies and consultations (Venkitaraman, et al., 2010).

The spine is one of the most common sites of metastasis with close to 20,000 cases of spine metastases arising each year in the United States (Sciubba, et al., 2009). The most common primary tumors in patients with metastases are breast, lung, prostate, and kidney cancer (Guillevin, et al., 2007). In close to 15% of oncology patients, the primary presenting symptoms of malignancy are related to spinal metastases. In these patients, the most common underlying pathology is lung cancer, followed by breast cancer in females and prostate cancer in male patients (Chamberlain & Kormanik, 1999).

When the patient's history is taken properly, a thorough physical examination is conducted, and appropriate diagnostic tests are performed, the physician can determine with a high level of accuracy whether an individual patient is suffering from nonspecific ("simple") back pain, or whether an underlying, potentially catastrophic disease is triggering the pain (Bach, et al., 1990).

In taking the patient's history, one should try to define specific characteristics of the pain. Is this radicular or axial back pain? Is the pain worse at night or in the morning? Is the pain mechanical in nature or constant? Is it progressing? The examining physician should also look for signs and symptoms of systemic disease, such as fatigue, night sweats, weight loss, and changes in bowel habits. Personal habits such as smoking, alcohol consumption, or drug use should be identified as a potential clue to the underlying pathology.

In a patient with a known history of cancer, the situation is quite different. Each new ache and bump might lead to the fear of a metastasis, and patients will thus be highly sensitive to changes. On the other hand, ignoring symptoms or assuming that they are normal side effects of medical treatment may lead a missed diagnosis and delayed treatment, with the potential of significantly shortening a patient's life expectancy or greatly reducing the quality of remaining life (Verbeeck, 2004). Sadly, although the awareness to the risk of spinal metastases is high, even in patients at high risk, progression, with catastrophic consequences can occur during a drawn out diagnostic process (Cole & Patchell, 2008; Hagelberg & Allan, 1990; Loblaw, et al., 2005). Although a high level of suspicion may lead to higher rates of imaging in these patients, any back pain in a patient with a history of malignancy should be considered as suspicious for spinal metastases and should be fully investigated.

We aimed to review the essential skills required for diagnosis of the etiology of back pain, and to outline basic elements of treatment in patients presenting with metastatic disease to the spine.

2. Making the diagnosis

2.1 Characteristics of benign back pain

Defining a patient's pain is a hard task. Pain is subjective. The way in which pain is experienced, tolerance for pain, the language used to describe it, and its impact on quality of life differ from patient to patient and from culture to culture. Pain can be affected by medications, comorbidities, prior treatments, and by the patient's life situation and mental state (Florence, 1981). With these points in mind, specific information can enable a skilled diagnostician to differentiate metastatic pain from benign back pain.

Benign back pain often arises from a specific event, is relieved by rest and lying down, and increases with activity such as lifting, sneezing, laughing, and the Valsalva maneuver (Lishchyna & Henderson, 2004). It is most commonly focal, with adjacent spasm of the lumbar muscles and buttocks. Benign back pain generally subsides several weeks after injury, and can be managed effectively with non-narcotic analgesics and physical therapy (Ladeira, 2011). Patients with benign pain may experience several relapses, but generally pain remits between attacks. In a portion of patients (up to 7%) benign pain becomes chronic, however a discussion of chronic back pain is beyond the scope of this chapter.

2.2 Characteristics of metastatic back pain

In contrast, pain caused by spinal metastases is typically persistent and progressive, and is not alleviated by rest. Often pain is worse at night, awakening the patient from sleep. This pain is typically focal at the level of the lesion, progresses over several days or weeks, and may be associated with neurological signs indicating pressure on the neural spinal elements (Bach, et al., 1990).

A spinal mass can cause one of several forms of back pain. Localized pain is confined to the region of the spine affected by the tumor. This type of pain presents when a metastasis that originally developed in the bone marrow extends to stretch the periosteum or invades soft tissues, triggering pain from the nerve roots or signaling instability in a specific spine segment (Cole & Patchell, 2008).

A second form of pain is radicular pain due to nerve root compression or invasion. This pain is also typically worse at night and when the patient is recumbent, due to lengthening of the spine and distension of the spinal epidural venous plexus. This pain is often made worse by a Valsalva maneuver or other stretching movement of the spine or lower limb. The pain is usually dermatome-linked and may be associated with weakness of the muscles innervated by this nerve root (Cole & Patchell, 2008). If more than one nerve root is involved, the pain might extend to more than one dermatome.

A third type of pain appears when a pathologic fracture is present. This pain is generally focal, associated with instability, and progressive. It will worsen with movement. In the case of a fracture, the patient may remember a specific event or time when the pain began. It can be debilitating, necessitating the use of large doses of narcotics or preventing the patient from sitting or walking (Smith, 2011). These fractures may also lead to neurological changes due to neural element compression (Shaw, et al., 1989).

Sadly, not all patients with spinal metastasis present with early back pain. Many times a metastasis, like other slowly evolving conditions, becomes symptomatic only when there is neural compression. In this case, the patient will come to medical care only when there is cord compression, with imminent risk of losing mobility and control of the bowels. This late presentation is associated with a lower probability of neurological recovery, and a high rate of morbidity and mortality (Sundaresan, et al., 1995).

2.3 Physical examination

As is the case with any diagnostic process, the physical examination begins when the patient walks through the door. The patient's general appearance, nutritional state, walking pattern, and general habitus can be assessed during the walk to the examination bed. It is thus important for the physician to be positioned to watch the patient's entry, and to be alert to these details.

A general examination should be performed, including clinical examination of the breasts, lungs, abdomen, thyroid, and prostate, in the appropriate setting. After the general examination, a thorough orthopedic examination should be performed to evaluate any limitation in movement or impairment due to metastatic disease in other locations. The spine should be examined to identify sites of focal tenderness and assess range of motion. Signs of spinal instability or neural compression should be evaluated, and a full neurological examination should be performed, including assessment of strength, deep and superficial sensation, and proprioception, as well as deep tendon and pathological reflexes (Winters, et al., 2006). In order to try to locate the specific location of the lesion, sensory and motor levels should be assessed and documented.

Physical examination should be repeated periodically to allow early detection of any pathological motor or sensory findings or abnormal reflexes or any signs suggesting spinal instability or pathological fracture (Bates & Reuler, 1988).

With findings from the physical examination in hand, the physician should have an understanding of the pathology, and whether it is pointing towards metastatic spread of the primary disease to the spine. The next steps in diagnosis or treatment are determined by these findings.

2.4 Blood work

If the history and physical examination leads to the suspicion that the patient's pain could originate from something more severe than common backache, blood work is mandated. If cancer is suspected, initial tests should include a complete blood count, a full chemistry panel including calcium and phosphate levels (de Mello, et al., 1983), evaluation of the erythrocyte sedimentation rate, and C-reactive protein levels (Elsberger, et al., 2011). If laboratory studies reveal anemia, thrombocytopenia hypercalcaemia, or elevated levels of alkaline phosphatase, concern should increase (Nieder, et al., 2010). Specific markers for prostate and breast cancer should be tested, as well as urine and blood protein electrophoresis if gammopathy (multiple myeloma or plasmacytoma) is suspected (Scharschmidt, et al., 2011).

A blood smear or a bone marrow biopsy may be indicated if hematological disease is suspected (Raje & Roodman, 2011).

2.5 Imaging

Metastases generally appear in more than one anatomic location. They can be in the brain, soft liver, lungs, or lymph nodes. In the skeleton, the third most common location for tumor spread, lesions may be found in the vertebrae, pelvis, proximal parts of the femur, ribs, proximal part of the humerus, and skull (Ratanatharathorn, et al., 1999). If a spinal metastasis is suspected, it is important to perform a full workup, both to identify the primary lesion and to detect other metastases.

2.5.1 X-ray

Simple X-rays of the spine are considered to be the first and most attainable imaging study. If obtained, they should be complimented with a chest X-ray for a preliminary search for lung involvement, however neither spinal nor lung tumors are well visualized on radiographs until the malignancy has advanced significantly (Nielsen, et al., 1991). Lateral X-ray may show vertebral body collapse. AP views may demonstrate pedicle erosion (the "winking owl" sign) or evidence of a paraspinal mass (Fehlings & Rao, 2000).

In cases where the physician has a high degree of suspicion towards metastatic spine disease, a more expeditious approach to diagnosis should be taken using advance imaging techniques such as CT or MRI (Black, et al., 1996). In these patients X-ray may be used as a complimentary study, since images obtained standing and dynamic X-rays can provide a better understanding of sagittal balance and stability of the diseased spine.

2.5.2 Computed Tomography

Computerized tomography (CT) has higher sensitivity and specificity than X-ray. Multislice CT (MDCT) systems facilitate a single rapid study of the chest-abdomen-pelvis. Osteolytic,

sclerotic, and mixed lesions are depicted well on CT scans, as are lesions involving the viscera and vascular anatomy. However, while 16/64 row MDCT provides excellent image quality and clear assessment of bony structures, metastatic lesions without significant bone destruction may be missed (Buhmann-Kirchhoff, et al., 2009). CT scans are also associated with relatively high quantities of radiation, limiting the number of screening studies that should be performed, especially in a younger population (Huda & He, 2011). In addition, the differential diagnosis between a malignant process versus osteoporotic or degenerative disease can be challenging in the spinal column (Chassang, et al., 2007). CT findings that suggest metastatic disease include destruction of the anterolateral or posterior vertebral cortex, destruction of one or both pedicles, an epidural mass, and presence of a focal paraspinal soft tissue mass (Fehlings & Rao, 2000; Laredo, et al., 1995).

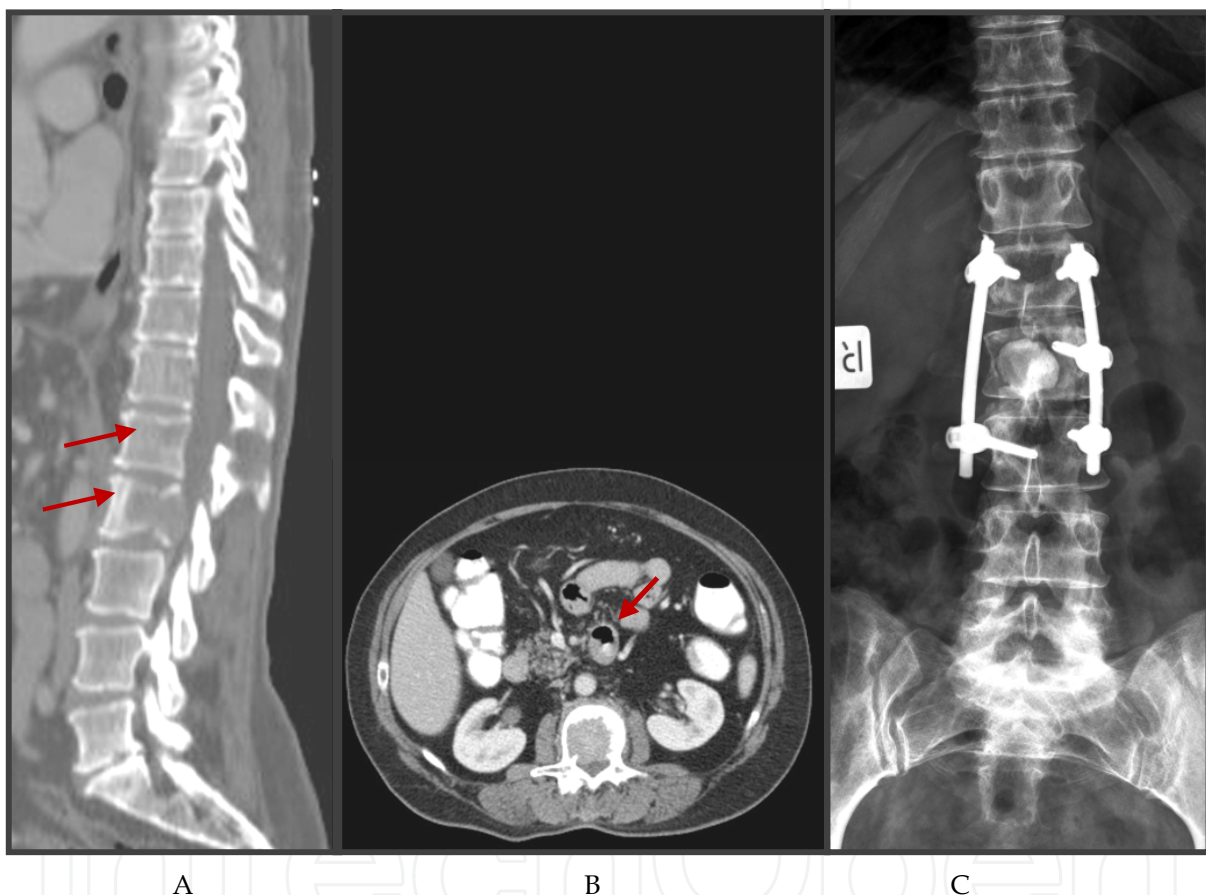


Fig. 1. Spinal metastasis to the thoracic and lumbar spine. A 74-year-old female with a history of gastrointestinal stromal tumor (GIST) presented with right leg sciatic pain and weakness. **(A)** Sagittal CT revealed an osteolytic metastasis in the vertebral body of T7, L1, and L2 (arrows). The L2 metastasis was most prominent, producing compression of the cauda equina. **(B)** Axial CT through the body of L2 demonstrating the soft tissue mass, which has created a cavity in the vertebral body, narrowed the spinal canal and created pressure on the cauda equina. **(C)** X-ray after transpedicular excision of the lesion shows reconstruction of the vertebral body with polymethylmethacrylate (PMMA) and L1-L3 posterolateral fixation with transpedicular screws and rods. The patient experienced immediate and sustained pain relief, with recovery of her previous strength. Two weeks after surgery she was treated with adjuvant EBRT.

2.5.3 Magnetic Resonance Imaging

Magnetic resonance imaging (MRI) is gold standard for evaluating spinal tumors. It depicts vertebral bone marrow infiltration by tumor cells as well as soft tissue masses in and around the spinal column. Bone marrow invaded by a neoplasm is characterized by increased cellularity, resulting in a decreased signal on T1-weighted images and a high signal on T2-weighted images, thus differentiating it from normal marrow tissue (Loblaw, et al., 2005). Intravenous gadolinium further increases the contrast between tumor and normal tissues (Loughrey, et al., 2000). MRI has been shown to detect up to 98.5% of vertebrae with metastatic disease, including both osteolytic and osteoblastic lesions. This high level of detection is not compromised by osteoporosity (Buhmann-Kirchhoff, et al., 2009).

However, MRI is a costly, time consuming exam, limiting its efficacy in patients who have difficulty lying down without moving for long periods of time and those who are claustrophobic or morbid (Eshed, et al., 2007). In addition, it may be difficult to differentiate between osteoporotic compression fracture and metastatic disease, especially if a fracture co-exists. Signs that characterize malignant vertebral collapse include ill-defined vertebral margins, abnormal signal involvement of the pedicle, a marked and heterogeneous MR enhancement pattern, and the presence of an irregular nodular-type paraspinal vertebral lesion (Shih, et al., 1999). Using of different diffusion coefficients may assist correctly identifying this deferential diagnosis (Chan, et al., 2002).



Fig. 2. **MRI of the lumbar spine.** A 42-year-old male presented with cauda equina syndrome due to an epidural metastasis to the lumbar spine from a synovial sarcoma originating in the left lower limb. **(A)** Preoperative T2-weighted sagittal MRI demonstrating a metastasis to the L4 vertebral body invading the epidural space and compressing the thecal sac (arrow). The patient underwent laminectomy and resection of the epidural mass. **(B)** Postoperative T2-weighted sagittal MRI showing post-laminectomy decompression of the thecal sac.

2.5.4 ^{99}Tc bone scan

With the exception of purely lytic tumors such as myeloma, eosinophilic granuloma, and renal cell carcinoma, $^{99\text{m}}\text{Tc}$ -methylene diphosphonate (MDP) bone scan has good sensitivity to tumors, is widely available, and has a relatively low cost, with the ability to scan the entire skeleton in a single study. It can be performed as a flat two dimensional exam or, incorporating more advanced single-photon emission computed tomography (SPECT) technology, with true 3D information. Bone scans have moderate sensitivity in the spine and pelvis (Steinborn, et al., 1999). Sensitivity to detection of spine metastasis can be significantly improved by the combination of bone scan and SPECT imaging capabilities (Schirrmeyer, et al., 2001). Bone scans combined with SPECT may depict spinal lesions as well as metastases in other bones or organs, and provide some indication of the site of the primary tumor in cases where this is not known. The main drawback to these studies is exposure to high levels of ionizing radiation and a lower rate of detection when compared with MRI (Sedonja & Budihna, 1999).

2.5.5 PET/CT

FDG-PET/CT studies in oncology utilize labeled glucose with the tracer fluorine-18 (F-18) fluorodeoxyglucose (FDG), in combination with MDCT, to provide the benefits of metabolic and anatomic imaging in a single study. FDG is a glucose analog that is taken up by glucose-using cells and phosphorylated by hexokinase in the mitochondria. Increased tumor [18F]-FDG uptake is depicted by positron emission tomography (PET), although proliferative activity is also broadly related to the number of viable tumor cells. When glucose is metabolized, the tissue incorporates the radioactive isomer, increasing local particle emission and producing a high intensity signal on PET/CT images (Young, et al., 1999).

PET-CT is a sensitive method for assessment of bone and bone marrow metastases, as well as vertebral and extravertebral skeletal masses. It is sensitive for osteolytic and osteoblastic metastasis and depicts early malignant bone-marrow infiltration (Kruger, et al., 2009). It provides precise localization and is sensitive to accompanying soft tissue metastases in the lung, liver, lymphatic system, and elsewhere (Metser, et al., 2004; Nguyen, et al., 2007). Low resolution PET scans are combined with the high resolution of thin slice CT, for exquisite depiction of even small metastases in early stages. PET/CT has higher sensitivity and specificity compared to bone scintigraphy or CT in the detection of skeletal metastases (Kruger, et al., 2009), however the rate of false-positive findings that require follow-up imaging with other modalities is also higher (Kuo & Cheng, 2005).

3. Cord compression

Discussions of metastatic epidural cord compression usually focus on the thoracic spine. Although the spinal cord usually ends in the lumbar spine between L1 and L2 in adults, up to 20% of metastatic cord compression occurs at these levels; thus lumbar cord compression must also be discussed.

Metastatic spinal cord compression (SCC) occurs in 5-10% of patients with cancer (Bach, et al., 1990). It is a true emergency, because delay in diagnosis and treatment may result in permanent neurological impairment. SCC is caused by direct compression of metastasis or primary tumors invading the vertebral bodies, breaking through the cortex, and

compressing the vertebral canal and nerve roots (Bilsky, et al., 2000). The most commonly affected site is the thoracic spine, which is also the area in which the canal is the tightest, leaving little space for movement of the cord. Breast cancer is the most frequent primary malignancy associated with SCC, followed by lung, prostate, and renal cancers (Byrne, 1992). However, SCC is also common in patients with hematological tumors such as lymphoma and myeloma. SCC is the initial manifestation of a metastatic spread of a tumor in approximately 20% of cancer patients; in patients with lung cancer the rate of SCC at first presentation climbs to 30% (Chahal, et al., 2003). In most of the cases of SCC, back pain has been present for several months before detection, but was ignored by the patient and caretakers (Byrne, 1992).

The most important factor in determining the post-treatment outcome is pretreatment ambulatory function of the patient. Late presentation with neurological deficits, including bowel or bladder dysfunction, is often associated with irreversible paraplegia. In recent series, 74-100% of patients who were ambulatory before surgery retained the ability to walk after decompression, and 57-82% of nonambulatory patients regained ambulation (Bilsky, et al., 2009). However ambulation at surgery remains a key determinant of outcome, therefore, urgent investigations must be performed to facilitate treatment before function is lost.

4. Treatment

4.1 Medical management of pain

Basic pain control is achieved by the use of narcotics and non-narcotic analgesics. In patients with back pain due to metastases, pain control is one of the most important goals in management, as the life expectancy of the patients is limited (Padalkar & Tow, 2011). Sadly, despite this concept, most patients are undertreated for pain, which causes a significant reduction in quality of life (Cleeland, 2006). Two types of pain needed to be addressed when dealing with medical management of the metastatic patients, the constant pain of the metastasis and an acute episode of sharp pain, known as "breakthrough pain" (Lipton, 2011).

The first line of treatment in patients with mild low back pain is the use of nonsteroidal anti-inflammatory drugs (NSAIDs) and acetaminophen. These agents may provide adequate pain relief. There have been nine trials indicating that the use of NSAIDs provides pain relief in bone metastasis, including one showing that NSAIDs (specifically COX-2 inhibitors) assist in tumor control as well (Smith, 2011). Acetaminophen is preferred in patients with thrombocytopenia, renal dysfunction, those receiving nephrotoxic agents, and those at risk for gastrointestinal bleeding. In patients with liver dysfunction, NSAIDs are preferred for mild pain (Hitron & Adams, 2009).

In patients who need the next level of treatment for their low back pain, opioid therapy should be added. Common protocols begin with low doses of immediate-release short-acting agents (i.e. morphine), with reassessment for the level of effect every 1 to 2 hours. After 24 hours of pain control on a short-acting regimen, patients should be converted to a long-acting agent such as sustained-release morphine, oxycodone, fentanyl, or methadone for basal control. Patients who are opioid tolerant should begin with higher doses of short-acting agents, with the higher dose compensating for shorter duration of effect. If a patient is already using a long-acting product, this should be continued. A bowel regimen with a

stimulant plus stool softener should be initiated to prevent constipation from opioid use. Care must be taken to avoid misuse and abuse of opioids, even in cancer patients (Manchikanti, et al., 2010).

Adjunct agents such as anticonvulsants (e.g., gabapentin, lamotrigine, topiramate), tricyclic antidepressants (e.g., amitriptyline, imipramine, desipramine, nortriptyline), venlafaxine, duloxetine, or topical analgesics (e.g., lidocaine or capsaicin) may also help to reduce neuropathic pain caused by nerve compression (Hitron & Adams, 2009).

In cases of breakthrough pain, oral transmucosal fentanyl and transdermal patches have been shown to be an effective treatment for pain including sharp pain episodes, yielding a more rapid onset of relief. In cases where patients developed tolerance towards opioid narcotics, the use of anesthetics, such as ketamine can provide adequate pain relief (Chazan, et al., 2008).

The use of cannabinoids as an alternative or to augment narcotics has become popular, primarily for light-to-intermediate pain. Three cannabinoids, all a combination of the delta-9-tetra-hydrocannabinol and cannabidiol cannabinoids from the *Cannabis sativa* plant, are available on the market. Sativex, a cannabinoid medication, has recently received approval as an adjuvant medication for the treatment of cancer pain in North America. It is a sublingual (mouth) spray that can be titrated up to the most effective dose (Bonneau, 2008). Other forms of cannabinoids treatment include smoking marijuana, or ingestion of oils or even cookies with insertion of active cannabinoid components. In our experience, "cannabis cookies" have provided relief or reduction in chronic pain levels for some cancer patients. The use of cannabinoids is indicated in cancer pain with a neuropathic component that is not adequately controlled with opioids. Cannabinoids are not suitable as a single medication in spine metastasis.

4.2 Steroids

Steroids are commonly prescribed in patients with metastatic bone disease. Steroids reduce edema and have been shown to reduce the size of metastases from tumors of hematological origin, and occasionally breast cancer (Cole & Patchell, 2008). They have also been shown to have a rapid analgesic effect (Bonneau, 2008). However, they are associated with side effects, such as wound dehiscence, gastric ulcers, rectal bleeding, psychosis, and diabetes mellitus, and may increase susceptibility to infections (Shih & Jackson, 2007).

An early study (Greenberg, et al., 1980) demonstrated quick and significant pain reduction in patients treated with steroids. A subsequent randomized trial (Vecht, et al., 1989) compared the effect of 10 mg IV dexamethasone versus 100 mg IV followed by 16 mg daily orally and found no differences between the conventional and high-dose group on pain, ambulation, or bladder function. Both the conventional and high-dose regimens provided significant pain relief.

A randomized, controlled trial (Sorensen, et al., 1994) studied the administration of 96 mg of IV dexamethasone followed by 96 mg orally for 3 days and then tapered in 10 days, with subsequent radiotherapy, versus radiotherapy as a single modality in the treatment of SCC. Steroid treatment provided a statistically significant improvement in ambulation at 3 to 6 months, albeit with increased side effects, including psychoses and gastric ulcers requiring surgery. The effect of dexamethasone on pain reduction was not addressed.

Currently there are no absolute guidelines for steroid treatment in patients with back pain due to spinal metastases. The decision of whether to treat, as well as steroid dose are determined by the treating physician. In cases of SCC, steroid treatment is given as an adjuvant to surgery or to chemo- or radiotherapy, and not as sole treatment modality.

4.3 Bisphosphonates

Bisphosphonates are pyrophosphate analogues. The bisphosphonates strongly bind hydroxyapatite crystals in bone, preventing the creation of the ruffle border of the osteoclasts that prevent bone resorption. In addition, bisphosphonates induce osteoclast apoptosis (Li, et al., 2011).

The rationale for using drugs such as bisphosphonates in patients with metastatic cancer is that osteoclasts, as the mediators of bone absorption, are often activated by the tumors and thus allow metastatic invasion into the medulla of the vertebrae. Preventing such activity may reduce metastatic invasion and spread (Orita, et al., 2011). In addition, by inhibiting bone resorption, a secondary correction of hypercalcaemia and hypercalciuria will be achieved (Woodward & Coleman, 2010).

Most importantly, the use of bisphosphonates reduces pain and the occurrence of fracture, as well as the development of new osteolytic lesions and, as a consequence, improves patients' quality of life (Fleisch, 1991). Compounds that are commercially available for use in tumor-induced bone disease are, in order of increasing potency, etidronate, clodronate, pamidronate, and alendronate.

Van Holten-Verzantvoort et al found a significant reduction in morbidity from bone metastases in pamidronate-treated breast cancer patients, with a 30–50% reduction of pain and lower rate of new pathological fractures (van Holten-Verzantvoort, et al., 1991). Thurlimann et al showed that pain relief was achieved in about 30% of patients who received pamidronate every 4 weeks (Thurlimann, et al., 1994).

Side effects from bisphosphonates, including transient low grade fever, nausea, myalgia, gastrointestinal side-effects, bone pain, and mild infusion-site reactions, are usually minimal. More rarely, osteonecrosis of the jaw and long bone "frozen bone" fractures due to long term use have been reported (Kim, et al., 2011; Mercadante, 1997).

A meta-analysis (Fulfaro, et al., 1998) concluded that bisphosphonates, and in particular IV pamidronate, are an important therapeutic tool in association with other therapeutic modalities for the treatment of metastatic bone disease with marked osteolysis, such as multiple myeloma and breast cancer. The authors did not evaluate the impact on back pain, but looked at the general effect of bisphosphonates on bone metastases.

4.4 Chemotherapy

As is the case with metastatic disease in other locations, the long-term control of spine metastases entails systemic chemotherapy. The type of treatment and its duration largely depend on the tumor histology and specific tumor receptors. The full treatment plan should be determined by a team of oncologists, spine surgeons, and radiotherapists, balancing the different modalities of treatment with the side effects and complications.

Hoy et al showed that many patients experience pain relief with chemotherapy, even in cases where there is no objective tumor response (Hoy, 1989). Although palliative, the exact benefit of chemotherapy is difficult to measure. Potential indications for palliative chemotherapy include symptoms due to metastatic disease, hypercalcemia, bone marrow infiltration, and clinical conditions known to be associated with bone or spine metastases. As patients are mainly treated with a combination of therapies, the exact effect of the response in the bone is more difficult to assess (Lote, et al., 1986).

In tumors that react quickly to chemotherapy, as in testicular cancers, lymphoma, or myeloma, administration of chemotherapy can have a pronounced effect in reducing back pain (Samoladas, et al., 2008). In tumors where the response to chemotherapy is slower, as in pancreatic cancer, pain reduction parallels the decrease in pressure exerted on spinal structures as the tumor slowly diminishes in size (Takuma, et al., 2006). However, in very advanced cancer patients there is little justification for using chemotherapy because of its toxicity (Bruera, 1993).

Hormonal therapy, based on the principle of depriving tumor cells of the growth stimulus induced by hormones that change the hormonal environment, may be beneficial in breast, prostate, and endometrial cancers (Wood, 1993). This treatment has a lower toxicity profile compared to chemotherapy, and should be the first therapeutic modality if possible. Dearnaley showed that hormonal therapy provides sustained symptom relief in patients with widespread painful bone metastases from prostatic cancer (Dearnaley, 1994). Cresenda et al showed that the combination of hormonal therapy with radiation for spinal metastasis reduces pain in 77% of patients (Cereceda, et al., 2003). There are no data regarding the impact on pain from the isolated use of hormonal therapy in patients with spinal metastasis.

4.5 Radiation-based treatment

Radiotherapy has served as a cornerstone for the treatment of bone metastases since it was introduced in the 1950s. Its benefits include reduction of pain and neurological complications arising from spinal cord compression. Radiation-based treatment is undergoing a revolution, with new stereotactic techniques for single-shot or fractionated treatment showing good results. However the mainstay of radiation-based treatment is external beam radiation therapy (EBRT) (Cole & Patchell, 2008; Harel & Angelov, 2010).

4.5.1 External beam radiation therapy

The exact pathophysiology of tumor response to radiotherapy is not fully understood, however EBRT can lead to rapid reduction in the tumor size, sometimes within 24 hours, decreasing local periosteal nerve stimulation. EBRT is typically given from a posterior field to the affected vertebra(e), with radiation delivered to a treatment area including one vertebral body above and one below to compensate for daily variations in patient setup.

A meta-analysis (Agarawal, et al., 2006), reported that over 40% of patients with bone metastases treated with radiation achieved at least a 50% reduction in pain, however fewer than 30% experienced complete pain relief at 1 month.

In cases of SCC, when surgery is not performed, the use of radiation combined with steroids has been shown to provide improved pain management and improved outcome when

compared to radiation alone (Loblaw, et al., 2005). In cases where surgery is planned, the use of preoperative EBRT is associated with an increase in local wound-related complications (Bilsky, et al., 2000; Itshayek, et al., 2010; Itshayek, et al., In press).

Numerous EBRT protocols may be employed in the management of painful bone metastasis, including fractionated and single-fraction regimens. The dose ranges from 8 Gy delivered in a single fraction, up to a cumulative dose of 30–40 Gy administered over 3–4 weeks (Gerrard & Franks, 2004; Harel & Angelov, 2010). In a retrospective evaluation of treatment, comparing a single 8 Gy dose with several hypofractionated regimens in 1304 patients with spine metastases, there was no statistical difference for the various protocols in terms of patient survival, pain control, or side effects, however there were higher recurrence rates in patients treated with a lower cumulative dose (Rades, et al., 2005).

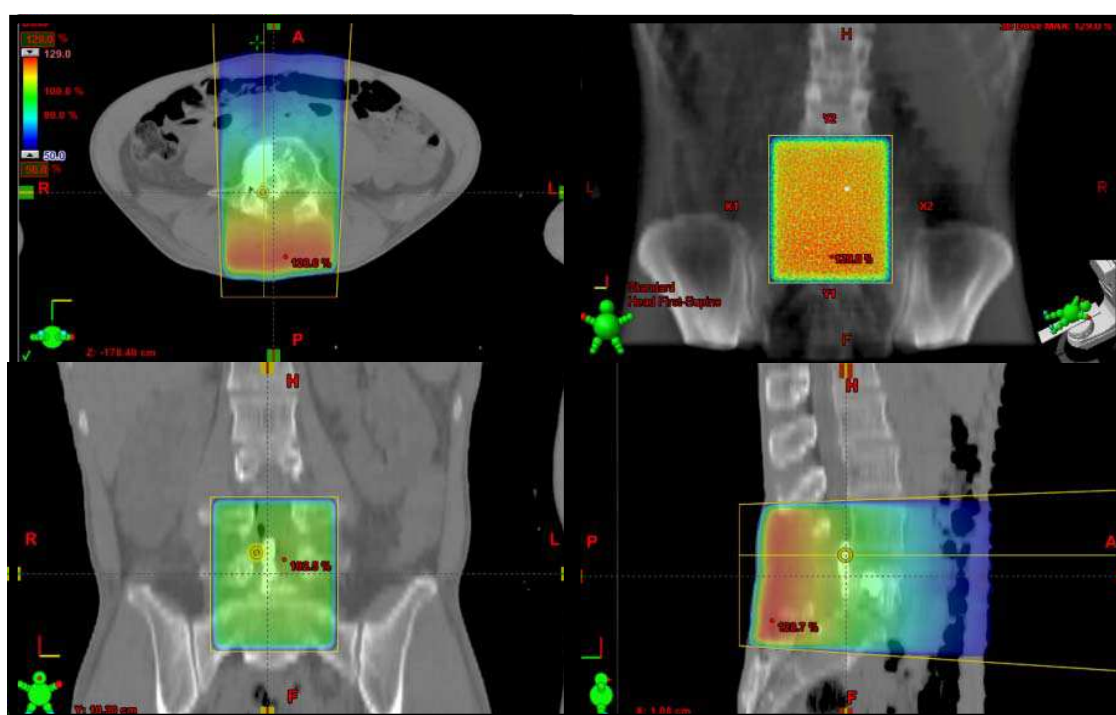


Fig. 3. **Treatment plan showing a map of the radiation fields for external beam radiation therapy.** A 42-year-old male presented with low back pain and cauda equina syndrome due to metastatic synovial sarcoma to L4 (Fig. 2). Following laminectomy and resection, he suffered persistent axial back pain and proceeded to vertebral augmentation (Fig. 5). After augmentation ERBT was administered for tumor control.

4.5.2 Stereotactic radiosurgery

Stereotactic radiosurgery (SRS) is a new modality that is used in patients with spinal metastases in some centers. The use of stereotaxy enables deployment of high doses of radiation to inactivate or eradicate defined targets in the head or spine, even tumor found in close proximity to the spinal cord or other critical structures. SRS uses sophisticated computer algorithms to divide the lethal doses of radiation into multiple projections, focusing a very high dose in the target zone with rapid dose fall off, and thus minimal collateral damage to adjacent tissues (Moulding, et al., 2010). These systems are extremely accurate, with less than 1 mm deviation from the target.

The optimal SRS protocol is highly individual, and should take into account the tumor's size, its pathological composition, and distance from the cord, as well as other radiosensitive organs. Data accumulating from an increasing number of studies suggests that SRS is a relatively safe, quick method to control spine metastases (Bilsky, et al., 2009). It provides excellent pain relief in most patients. In one study, significant pain relief was reported 6 months after treatment in 91% of patients treated with the Cyberknife (Accuray, Sunnyvale CA, USA) (Chang, et al., 2009). Another study reported improved pain control and improved quality of life 1 year after treatment (Degen, et al., 2005).

A possible side effect of spinal SRS is compression fracture, which may be attributed to rapid tumor lysis after radiation. These fractures can be managed conservatively or with pre-radiation vertebral augmentation (Gerszten, et al., 2005).

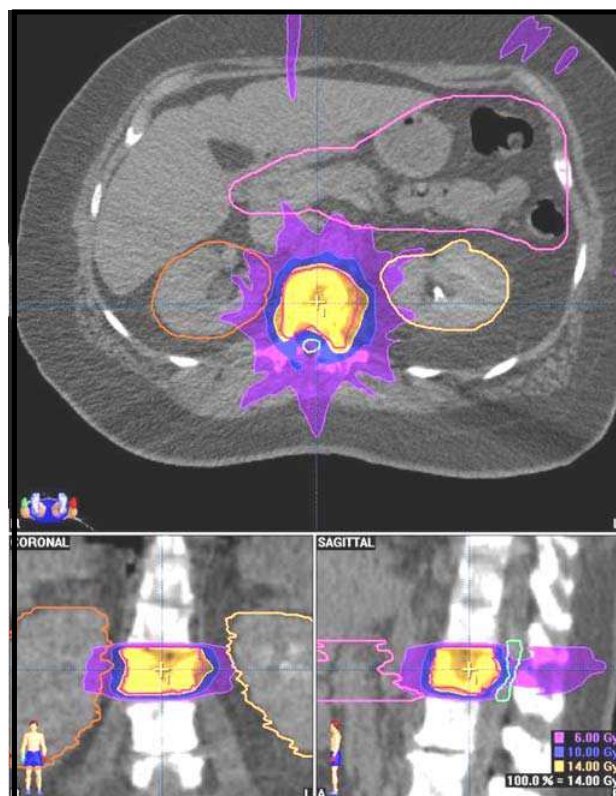


Fig. 4. **Treatment plan showing radiation fields for a stereotactic radiosurgery procedure.** A 65-year-old male with renal cell carcinoma that was metastatic to L2 that was treated with single-shot SRS.

4.6 Surgery

4.6.1 Tumor decompression and instrumental stabilization

The surgical treatment of spinal metastases has evolved significantly over the last 20 years, with mounting evidence of the value of surgery in the treatment of metastasis (Bilsky, et al., 2009; Cole & Patchell, 2008; Harel & Angelov, 2010; Tomita, et al., 1997). Surgery was once limited to posterior laminectomy for the management of neurological decompression in SCC {Roy-Camille, 1990 #219}. With this philosophy, outcomes were mixed since most metastases are anterior to the cord and thus not directly accessible with posterior surgical

approaches. With advances in technique, new surgical approaches, and spinal instrumentation, patient outcomes have significantly improved, due to a combination of anterior tumor decompression and instrumental stabilization. The surgical approach is tailored, depending on the anatomic locations of metastases, aiming if possible to reach en block total resection of the tumor, the best possible outcome for the patient {Tomita, 2006 #220}. Tumors anterior to the spinal cord are usually approached with a purely anterior approach, especially in the cervical spine, or through a posterolateral or lateral approach in the thoracic and lumbar spine. These approaches allow for anterior decompression with anterior column support, as well as posterior instrumented fusion for improved stability. Although laminectomy can help to increase the diameter of the spinal canal at the affected levels, it does not achieve immediate cord decompression and can lead to instability {Black, 1996 #213; Camins, 2004 #221}.

As in most procedures for the management of metastatic disease, the aim is not to provide a cure but rather to relieve pain, stabilize the spine, prevent neurological deterioration, and at times provide a pathological diagnosis (Choi, et al., 2010). In select cases, complete resection of a spinal metastasis can be performed, which can provide the best opportunity for long-term local control and palliation in patients with isolated metastases or radioresistant tumors (Gallo & Donington, 2007). In cases where total resection cannot be achieved, stabilization and decompression provide a window of opportunity for other treatment modalities to take their course without jeopardizing the patients' health. In two large cohorts of patients, surgery reduced pain, and improved physical function and quality of life in patients with symptomatic vertebral metastases at 12 month follow up and beyond, with an acceptable complication rate (Falicov, et al., 2006; Quan, et al., 2011).

In cases of SCC, treatment should include corticosteroids, surgery, and radiotherapy along with aggressive systemic chemotherapy. Surgical decompression followed by radiotherapy was shown to be superior to radiotherapy alone in a study that was halted early after interim analysis demonstrated superior results in the surgery and radiotherapy group compared to the radiotherapy alone group (Patchell, et al., 2005). Patients treated with surgery plus radiotherapy had a median survival of 126 days with ambulation for 122 days, compared to a median 100 days survival and only 13 days ambulation in patients treated with EBRT alone. These findings were confirmed in a retrospective study conducted at our center (unpublished results). Patients who were operated had longer periods of ambulation relative to patients treated solely by radiotherapy. They also required lower doses and lighter pain medications.

4.6.2 Vertebral augmentation using vertebroplasty and kyphoplasty

Over the past two decades, percutaneous cement augmentation techniques have been developed for the treatment of spinal metastases and fractures. The two most common techniques are vertebroplasty and kyphoplasty. Vertebroplasty is a technique in which cement is injected into the vertebral body; kyphoplasty uses a balloon to create a void in the vertebrae into which the cement is injected. In a recent review comparing these techniques, pain scores for both the vertebroplasty and the kyphoplasty groups decreased significantly from preoperative values at 6-month follow-up (Liu, et al., 2010). The National Institute for Health and Clinical Excellence (NICE) guidelines (N.H.S., 2003; 2006) state that vertebroplasty or kyphoplasty should be considered for patients with vertebral metastases

when their pain is refractory to analgesia, or when there is evidence of vertebral body collapse, in cases where there is no evidence of cord compression or spinal instability.

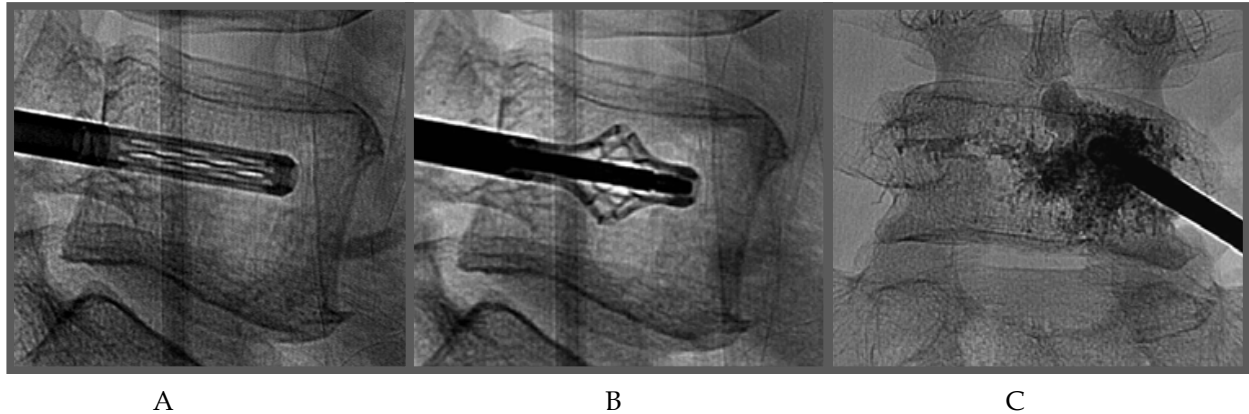


Fig. 5. **Vertebral augmentation.** A 47-year-old male presented with persistent axial low back pain that was refractory to medical management following laminectomy and resection of an epidural mass from an L4 metastasis of a synovial sarcoma (see Figs. 2, 3). The patient underwent vertebral augmentation. **(A)** An OsseoFix implant (Alphatech Spine, Carsbad CA, USA) is inserted in an unexpanded configuration into the L4 vertebral body. **(B)** Once proper placement is confirmed on fluoroscopy, the implant is expanded. **(C)** The implant is filled with PMMA bone cement. Following augmentation the patient is pain free.

5. Conclusions

Back pain is one of the most prevalent medical problems, and is usually benign. However, in patients with a history of cancer, one must take extreme precautions to make sure that a metastatic spread of the tumor is not missed. Metastases may present as mechanical pain, radicular pain or weakness, or with myelopathy. Pain is usually unremitting and progressive.

MRI is the gold standard for image-based diagnosis, with excellent depiction of soft tissue, including the spinal cord and nerve roots; CT provides optimal visualization of bony structures.

Pain is the most common and earliest complaint, and sadly, it is undertreated in most patients. Most studies are not focused on pain control, but rather on the neurological status of the patient, while pain control is a secondary objective.

Management of back pain in metastatic patients may involve a combination of pain medications, chemotherapy, radiation-based treatment, and surgery. Patient management thus requires the combined efforts of a multidisciplinary team, including oncologists, radiation oncologists, and spine surgeons. Treatment should be tailored to the needs of specific patients, based on their prognosis, neurological status, age, and primary pathology.

6. Acknowledgements

The authors wish to thank Shifra Fraifeld, a research associate in the Department of Neurosurgery, for her editorial assistance in the preparation of this material.

7. References

- Agarawal, J.P., Swangsilpa, T., van der Linden, Y., Rades, D., Jeremic, B. & Hoskin, P.J. (2006). The role of external beam radiotherapy in the management of bone metastases. *Clin Oncol (R Coll Radiol)*, Vol. 18, pp.747-60.
- Bach, F., Larsen, B.H., Rohde, K., Borgesen, S.E., Gjerris, F., Boge-Rasmussen, T., Agerlin, N., Rasmusson, B., Stjernholm, P. & Sorensen, P.S. (1990). Metastatic spinal cord compression. Occurrence, symptoms, clinical presentations and prognosis in 398 patients with spinal cord compression. *Acta Neurochir (Wien)*, Vol. 107, pp.37-43.
- Bates, D.W. & Reuler, J.B. (1988). Back pain and epidural spinal cord compression. *J Gen Intern Med*, Vol. 3, pp.191-7.
- Bilsky, M.H., Boland, P., Lis, E., Raizer, J.J. & Healey, J.H. (2000). Single-stage posterolateral transpedicle approach for spondylectomy, epidural decompression, and circumferential fusion of spinal metastases. *Spine (Phila Pa 1976)*, Vol. 25, pp.2240-9, discussion 250.
- Bilsky, M.H., Laufer, I. & Burch, S. (2009). Shifting paradigms in the treatment of metastatic spine disease. *Spine (Phila Pa 1976)*, Vol. 34, pp.S101-7.
- Black, P., SNair, S. & Giannakopoulos, G. (1996). Spinal epidural tumors, In *Neurosurgery, 2nd ed., Vol. II* (pp. 1791-1804) R. H. Wilkins and S. S. Rengachary (Ed.), (Eds.), McGraw-Hill, New York.
- Bonneau, A. (2008). Management of bone metastases. *Can Fam Physician*, Vol. 54, pp.524-7.
- Buhmann-Kirchhoff, S., Becker, C., Duerr, H.R., Reiser, M. & Baur-Melnyk, A. (2009). Detection of osseous metastases of the spine: comparison of high resolution multi-detector-CT with MRI. *Eur J Radiol*, Vol. 69, pp.567-73.
- Byrne, T.N. (1992). Spinal cord compression from epidural metastases. *N Engl J Med*, Vol. 327, pp.614-9.
- Cereceda, L.E., Flechon, A. & Droz, J.P. (2003). Management of vertebral metastases in prostate cancer: a retrospective analysis in 119 patients. *Clin Prostate Cancer*, Vol. 2, pp.34-40.
- Chahal, S., Lagera, J.E., Ryder, J. & Kleinschmidt-DeMasters, B.K. (2003). Hematological neoplasms with first presentation as spinal cord compression syndromes: a 10-year retrospective series and review of the literature. *Clin Neuropathol*, Vol. 22, pp.282-90.
- Chamberlain, M.C. & Kormanik, P.A. (1999). Epidural spinal cord compression: a single institution's retrospective experience. *Neuro Oncol*, Vol. 1, pp.120-3.
- Chan, J.H., Peh, W.C., Tsui, E.Y., Chau, L.F., Cheung, K.K., Chan, K.B., Yuen, M.K., Wong, E.T. & Wong, K.P. (2002). Acute vertebral body compression fractures: discrimination between benign and malignant causes using apparent diffusion coefficients. *Br J Radiol*, Vol. 75, pp.207-14.
- Chang, U.K., Youn, S.M., Park, S.Q. & Rhee, C.H. (2009). Clinical results of cyberknife(r) radiosurgery for spinal metastases. *J Korean Neurosurg Soc*, Vol. 46, pp.538-44.
- Chassang, M., Grimaud, A., Cucchi, J.M., Novellas, S., Amoretti, N., Chevallier, P. & Bruneton, J.N. (2007). Can low-dose computed tomographic scan of the spine replace conventional radiography? An evaluation based on imaging myelomas, bone metastases, and fractures from osteoporosis. *Clin Imaging*, Vol. 31, pp.225-7.

- Chazan, S., Ekstein, M.P., Marouani, N. & Weinbroum, A.A. (2008). Ketamine for acute and subacute pain in opioid-tolerant patients. *J Opioid Manag*, Vol. 4, pp.173-80.
- Choi, D., Crockard, A., Bungler, C., Harms, J., Kawahara, N., Mazel, C., Melcher, R. & Tomita, K. (2010). Review of metastatic spine tumour classification and indications for surgery: the consensus statement of the Global Spine Tumour Study Group. *Eur Spine J*, Vol. 19, pp.215-22.
- Chou, R. (2010). Low back pain (chronic). *Clin Evidence*, BMJ Brit Med J. Retrieved from <http://clinicalevidence.bmj.com/ceweb/conditions/msd/1116/1116-get.pdf>
- Cleeland, C.S. (2006). The measurement of pain from metastatic bone disease: capturing the patient's experience. *Clin Cancer Res*, Vol. 12, pp.6236s-6242s.
- Cole, J.S. & Patchell, R.A. (2008). Metastatic epidural spinal cord compression. *Lancet Neurol*, Vol. 7, pp.459-66.
- Dagenais, S., Tricco, A.C. & Haldeman, S. (2010). Synthesis of recommendations for the assessment and management of low back pain from recent clinical practice guidelines. *Spine J*, Vol. 10, pp.514-29.
- de Mello, J., Struthers, L., Turner, R., Cooper, E.H. & Giles, G.R. (1983). Multivariate analyses as aids to diagnosis and assessment of prognosis in gastrointestinal cancer. *Br J Cancer*, Vol. 48, pp.341-8.
- Dearnaley, D.P. (1994). Cancer of the prostate. *BMJ*, Vol. 308, pp.780-4.
- Degen, J.W., Gagnon, G.J., Voyadzis, J.M., McRae, D.A., Lunsden, M., Dieterich, S., Molzahn, I. & Henderson, F.C. (2005). CyberKnife stereotactic radiosurgical treatment of spinal tumors for pain control and quality of life. *J Neurosurg Spine*, Vol. 2, pp.540-9.
- Elsberger, B., Lankston, L., McMillan, D.C., Underwood, M.A. & Edwards, J. (2011). Presence of tumoural C-reactive protein correlates with progressive prostate cancer. *Prostate Cancer Prostatic Dis*, Vol. 14, pp.122-8.
- Eshed, I., Althoff, C.E., Hamm, B. & Hermann, K.G. (2007). Claustrophobia and premature termination of magnetic resonance imaging examinations. *J Magn Reson Imaging*, Vol. 26, pp.401-4.
- Falicov, A., Fisher, C.G., Sparkes, J., Boyd, M.C., Wing, P.C. & Dvorak, M.F. (2006). Impact of surgical intervention on quality of life in patients with spinal metastases. *Spine (Phila Pa 1976)*, Vol. 31, pp.2849-56.
- Fehlings, M.G. & Rao, S.C. (2000). Spinal cord and spinal column tumors, In *Neuro-oncology: the essentials* (pp. 445-464) M. Bernstein and M. S. Berger (Ed.), (Eds.), Thieme Medical Publishers, Inc., New York.
- Fleisch, H. (1991). Bisphosphonates. Pharmacology and use in the treatment of tumour-induced hypercalcaemic and metastatic bone disease. *Drugs*, Vol. 42, pp.919-44.
- Florence, D.W. (1981). The chronic pain syndrome: a physical and psychologic challenge. *Postgrad Med*, Vol. 70, pp.217-9, 222-3, 226-8.
- Fulfaro, F., Casuccio, A., Ticozzi, C. & Ripamonti, C. (1998). The role of bisphosphonates in the treatment of painful metastatic bone disease: a review of phase III trials. *Pain*, Vol. 78, pp.157-69.
- Gallo, A.E. & Donington, J.S. (2007). The role of surgery in the treatment of stage III non-small-cell lung cancer. *Curr Oncol Rep*, Vol. 9, pp.247-54.

- Gerrard, G.E. & Franks, K.N. (2004). Overview of the diagnosis and management of brain, spine, and meningeal metastases. *J Neurol Neurosurg Psychiatry*, Vol. 75 Suppl 2, pp.ii37-42.
- Gerszten, P.C., Germanwala, A., Burton, S.A., Welch, W.C., Ozhasoglu, C. & Vogel, W.J. (2005). Combination kyphoplasty and spinal radiosurgery: a new treatment paradigm for pathological fractures. *J Neurosurg Spine*, Vol. 3, pp.296-301.
- Greenberg, H.S., Kim, J.H. & Posner, J.B. (1980). Epidural spinal cord compression from metastatic tumor: results with a new treatment protocol. *Ann Neurol*, Vol. 8, pp.361-6.
- Guillevin, R., Vallee, J.N., Lafitte, F., Menuel, C., Duverneuill, N.M. & Chiras, J. (2007). Spine metastasis imaging: review of the literature. *J Neuroradiol*, Vol. 34, pp.311-21.
- Hagelberg, C. & Allan, D. (1990). Restricted diffusion of integral membrane proteins and polyphosphoinositides leads to their depletion in microvesicles released from human erythrocytes. *Biochem J*, Vol. 271, pp.831-4.
- Harel, R. & Angelov, L. (2010). Spine metastases: current treatments and future directions. *Eur J Cancer*, Vol. 46, pp.2696-707.
- Henschke, N., Maher, C.G., Refshauge, K.M., Herbert, R.D., Cumming, R.G., Bleasel, J., York, J., Das, A. & McAuley, J.H. (2009). Prevalence of and screening for serious spinal pathology in patients presenting to primary care settings with acute low back pain. *Arthritis Rheum*, Vol. 60, pp.3072-80.
- Hitron, A. & Adams, V. (2009). The pharmacological management of skeletal-related events from metastatic tumors. *Orthopedics*, Vol. 32, pp.188.
- Hoy, A.M. (1989). Radiotherapy, chemotherapy and hormone therapy: treatment for pain, In *Textbook of Pain* (pp. 966-978) P. D. Wall and R. Melzack (Ed.), (Eds.), Churchill Livingstone, Edinburgh.
- Huda, W. & He, W. (2011). Estimating cancer risks to adults undergoing body CT examinations. *Radiat Prot Dosimetry*, Vol.
- Itshayek, E., Yamada, J., Bilsky, M., Schmidt, M., Shaffrey, C., Gerszten, P., Polly, D., Gokaslan, Z., Varga, P.P. & Fisher, C.G. (2010). Timing of surgery and radiotherapy in the management of metastatic spine disease: a systematic review. *Int J Oncol*, Vol. 36, pp.533-44.
- Itshayek, E., Yamada, J., Mahgerefteh, S., Cohen, J.E. & Fisher, C.G. (In press). Sequence of surgery, radiotherapy, and stereotactic radiosurgery in the treatment of metastatic spine disease: effects on wound healing, In *Spinal tumors Part 1*, Vol. 6 M. A. Hayat (Ed.), (Eds.), Springer-Verlag, London.
- Kim, S.Y., Schneeweiss, S., Katz, J.N., Levin, R. & Solomon, D.H. (2011). Oral bisphosphonates and risk of subtrochanteric or diaphyseal femur fractures in a population-based cohort. *J Bone Miner Res*, Vol. 26, pp.993-1001.
- Kruger, S., Buck, A.K., Mottaghy, F.M., Hasenkamp, E., Pauls, S., Schumann, C., Wibmer, T., Merk, T., Hombach, V. & Reske, S.N. (2009). Detection of bone metastases in patients with lung cancer: ^{99m}Tc-MDP planar bone scintigraphy, ¹⁸F-fluoride PET or ¹⁸F-FDG PET/CT. *Eur J Nucl Med Mol Imaging*, Vol. 36, pp.1807-12.
- Kuo, P.H. & Cheng, D.W. (2005). Artfactual spinal metastases imaged by PET/CT: a case report. *J Nucl Med Technol*, Vol. 33, pp.230-1.

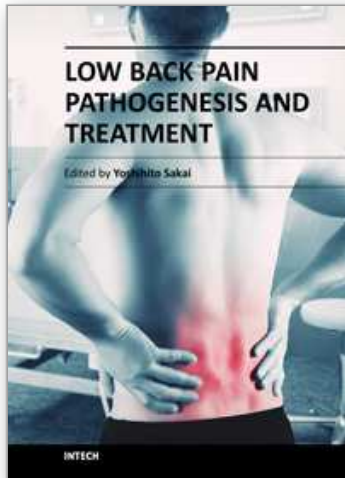
- Ladeira, C.E. (2011). Evidence based practice guidelines for management of low back pain: physical therapy implications. *Rev Bras Fisioter*, Vol. 15, pp.190-9.
- Laredo, J.D., Lakhdari, K., Bellaiche, L., Hamze, B., Jankiewicz, P. & Tubiana, J.M. (1995). Acute vertebral collapse: CT findings in benign and malignant nontraumatic cases. *Radiology*, Vol. 194, pp.41-8.
- Li, B., Ling Chau, J.F., Wang, X. & Leong, W.F. (2011). Bisphosphonates, specific inhibitors of osteoclast function and a class of drugs for osteoporosis therapy. *J Cell Biochem*, Vol. 112, pp.1229-42.
- Lipton, A. (2011). New strategies to prevent and manage bone complications in cancer. *Clin Adv Hematol Oncol*, Vol. 9, pp.42-4.
- Lishchyna, N. & Henderson, S. (2004). Acute onset-low back pain and hip pain secondary to metastatic prostate cancer: a case report. *J Can Chiropr Assoc*, Vol. 48, pp.5-12.
- Liu, J.T., Liao, W.J., Tan, W.C., Lee, J.K., Liu, C.H., Chen, Y.H. & Lin, T.B. (2010). Balloon kyphoplasty versus vertebroplasty for treatment of osteoporotic vertebral compression fracture: a prospective, comparative, and randomized clinical study. *Osteoporos Int*, Vol. 21, pp.359-64.
- Loblaw, D.A., Perry, J., Chambers, A. & Laperriere, N.J. (2005). Systematic review of the diagnosis and management of malignant extradural spinal cord compression: the Cancer Care Ontario Practice Guidelines Initiative's Neuro-Oncology Disease Site Group. *J Clin Oncol*, Vol. 23, pp.2028-37.
- Lote, K., Walloe, A. & Bjersand, A. (1986). Bone metastasis. Prognosis, diagnosis and treatment. *Acta Radiol Oncol*, Vol. 25, pp.227-32.
- Loughrey, G.J., Collins, C.D., Todd, S.M., Brown, N.M. & Johnson, R.J. (2000). Magnetic resonance imaging in the management of suspected spinal canal disease in patients with known malignancy. *Clin Radiol*, Vol. 55, pp.849-55.
- Manchikanti, L., Fellows, B., Ailani, H. & Pampati, V. (2010). Therapeutic use, abuse, and nonmedical use of opioids: a ten-year perspective. *Pain Physician*, Vol. 13, pp.401-35.
- Mercadante, S. (1997). Malignant bone pain: pathophysiology and treatment. *Pain*, Vol. 69, pp.1-18.
- Metser, U., Lerman, H., Blank, A., Lievshitz, G., Bokstein, F. & Even-Sapir, E. (2004). Malignant involvement of the spine: assessment by 18F-FDG PET/CT. *J Nucl Med*, Vol. 45, pp.279-84.
- Moore, J.E. (2010). Chronic low back pain and psychosocial issues. *Phys Med Rehabil Clin N Am*, Vol. 21, pp.801-15.
- Moulding, H.D., Elder, J.B., Lis, E., Lovelock, D.M., Zhang, Z., Yamada, Y. & Bilsky, M.H. (2010). Local disease control after decompressive surgery and adjuvant high-dose single-fraction radiosurgery for spine metastases. *J Neurosurg Spine*, Vol. 13, pp.87-93.
- N.H.S. (2003). Percutaneous vertebroplasty. National Institute for Clinical Excellence (NICE), National Health Service (NHS). Retrieved from <http://www.nice.org.uk/nicemedia/live/11058/30792/30792.pdf> (Accessed October 3, 2011)

- N.H.S. (2006). Balloon kyphoplasty for vertebral compression fractures. National Institute for Health and Clinical Excellence (NICE), National Health Service (NHS). Retrieved from <http://www.nice.org.uk/guidance/IPG166>. (Accessed September 26, 2011)
- Nguyen, N.C., Chaar, B.T. & Osman, M.M. (2007). Prevalence and patterns of soft tissue metastasis: detection with true whole-body F-18 FDG PET/CT. *BMC Med Imaging*, Vol. 7, pp.8.
- Nieder, C., Haukland, E., Pawinski, A. & Dalhaug, A. (2010). Anaemia and thrombocytopenia in patients with prostate cancer and bone metastases. *BMC Cancer*, Vol. 10, pp.284.
- Nielsen, O.S., Munro, A.J. & Tannock, I.F. (1991). Bone metastases: pathophysiology and management policy. *J Clin Oncol*, Vol. 9, pp.509-24.
- Orita, Y., Sugitani, I., Toda, K., Manabe, J. & Fujimoto, Y. (2011). Zoledronic acid in the treatment of bone metastases from differentiated thyroid carcinoma. *Thyroid*, Vol. 21, pp.31-5.
- Padalkar, P. & Tow, B. (2011). Predictors of survival in surgically treated patients of spinal metastasis. *Indian J Orthop*, Vol. 45, pp.307-13.
- Patchell, R.A., Tibbs, P.A., Regine, W.F., Payne, R., Saris, S., Kryscio, R.J., Mohiuddin, M. & Young, B. (2005). Direct decompressive surgical resection in the treatment of spinal cord compression caused by metastatic cancer: a randomised trial. *Lancet*, Vol. 366, pp.643-8.
- Quan, G.M., Vital, J.M., Aurouer, N., Obeid, I., Palussiere, J., Diallo, A. & Pointillart, V. (2011). Surgery improves pain, function and quality of life in patients with spinal metastases: a prospective study on 118 patients. *Eur Spine J*, Vol.
- Rades, D., Stalpers, L.J., Veninga, T., Schulte, R., Hoskin, P.J., Obralic, N., Bajrovic, A., Rudat, V., Schwarz, R., Hulshof, M.C., Poortmans, P. & Schild, S.E. (2005). Evaluation of five radiation schedules and prognostic factors for metastatic spinal cord compression. *J Clin Oncol*, Vol. 23, pp.3366-75.
- Raje, N. & Roodman, G.D. (2011). Advances in the biology and treatment of bone disease in multiple myeloma. *Clin Cancer Res*, Vol. 17, pp.1278-86.
- Ratanatharathorn, V., Powers, W.E., Moss, W.T. & Perez, C.A. (1999). Bone metastasis: review and critical analysis of random allocation trials of local field treatment. *Int J Radiat Oncol Biol Phys*, Vol. 44, pp.1-18.
- Samoladas, E.P., Anbar, A.S., Lucas, J.D., Fotiadis, H. & Chalidis, B.E. (2008). Spinal cord compression by a solitary metastasis from a low grade leydig cell tumour: a case report and review of the literature. *World J Surg Oncol*, Vol. 6, pp.75.
- Scharschmidt, T.J., Lindsey, J.D., Becker, P.S. & Conrad, E.U. (2011). Multiple myeloma: diagnosis and orthopaedic implications. *J Am Acad Orthop Surg*, Vol. 19, pp.410-9.
- Schirrmeister, H., Glatting, G., Hetzel, J., Nussle, K., Arslanemir, C., Buck, A.K., Dziuk, K., Gabelmann, A., Reske, S.N. & Hetzel, M. (2001). Prospective evaluation of the clinical value of planar bone scans, SPECT, and (18)F-labeled NaF PET in newly diagnosed lung cancer. *J Nucl Med*, Vol. 42, pp.1800-4.
- Sciubba, D.M., Nguyen, T. & Gokaslan, Z.L. (2009). Solitary vertebral metastasis. *Orthop Clin North Am*, Vol. 40, pp.145-54, viii.

- Sedonja, I. & Budihna, N.V. (1999). The benefit of SPECT when added to planar scintigraphy in patients with bone metastases in the spine. *Clin Nucl Med*, Vol. 24, pp.407-13.
- Shaw, B., Mansfield, F.L. & Borges, L. (1989). One-stage posterolateral decompression and stabilization for primary and metastatic vertebral tumors in the thoracic and lumbar spine. *J Neurosurg*, Vol. 70, pp.405-10.
- Shih, A. & Jackson, K.C., 2nd. (2007). Role of corticosteroids in palliative care. *J Pain Palliat Care Pharmacother*, Vol. 21, pp.69-76.
- Shih, T.T., Huang, K.M. & Li, Y.W. (1999). Solitary vertebral collapse: distinction between benign and malignant causes using MR patterns. *J Magn Reson Imaging*, Vol. 9, pp.635-42.
- Smith, H.S. (2011). Painful osseous metastases. *Pain Physician*, Vol. 14, pp.E373-403.
- Sorensen, S., Helweg-Larsen, S., Mouridsen, H. & Hansen, H.H. (1994). Effect of high-dose dexamethasone in carcinomatous metastatic spinal cord compression treated with radiotherapy: a randomised trial. *Eur J Cancer*, Vol. 30A, pp.22-7.
- Steinborn, M.M., Heuck, A.F., Tiling, R., Bruegel, M., Gauger, L. & Reiser, M.F. (1999). Whole-body bone marrow MRI in patients with metastatic disease to the skeletal system. *J Comput Assist Tomogr*, Vol. 23, pp.123-9.
- Sundaresan, N., Sachdev, V.P., Holland, J.F., Moore, F., Sung, M., Paciucci, P.A., Wu, L.T., Kelligher, K. & Hough, L. (1995). Surgical treatment of spinal cord compression from epidural metastasis. *J Clin Oncol*, Vol. 13, pp.2330-5.
- Takuma, Y., Kawai, D., Makino, Y., Saito, S., Tanaka, S., Ogata, M., Ohta, T., Murakami, I. & Nishiura, T. (2006). Vertebral metastasis of intraductal papillary mucinous tumor of the pancreas. *Pancreas*, Vol. 33, pp.206-8.
- Thurlimann, B., Morant, R., Jungi, W.F. & Radziwill, A. (1994). Pamidronate for pain control in patients with malignant osteolytic bone disease: a prospective dose-effect study. *Support Care Cancer*, Vol. 2, pp.61-5.
- Tomita, K., Kawahara, N., Baba, H., Tsuchiya, H., Fujita, T. & Toribatake, Y. (1997). Total en bloc spondylectomy. A new surgical technique for primary malignant vertebral tumors. *Spine (Phila Pa 1976)*, Vol. 22, pp.324-33.
- van Holten-Verzantvoort, A.T., Zwinderman, A.H., Aaronson, N.K., Hermans, J., van Emmerik, B., van Dam, F.S., van den Bos, B., Bijvoet, O.L. & Cleton, F.J. (1991). The effect of supportive pamidronate treatment on aspects of quality of life of patients with advanced breast cancer. *Eur J Cancer*, Vol. 27, pp.544-9.
- Vecht, C.J., Haaxma-Reiche, H., van Putten, W.L., de Visser, M., Vries, E.P. & Twijnstra, A. (1989). Initial bolus of conventional versus high-dose dexamethasone in metastatic spinal cord compression. *Neurology*, Vol. 39, pp.1255-7.
- Venkitaraman, R., Sohaib, S.A., Barbachano, Y., Parker, C.C., Huddart, R.A., Horwich, A. & Dearnaley, D. (2010). Frequency of screening magnetic resonance imaging to detect occult spinal cord compromise and to prevent neurological deficit in metastatic castration-resistant prostate cancer. *Clin Oncol (R Coll Radiol)*, Vol. 22, pp.147-52.
- Verbeeck, A. (2004). Bone metastases from breast cancer: guidelines for diagnosis. *J Manipulative Physiol Ther*, Vol. 27, pp.211-5.
- Winters, M.E., Kluetz, P. & Zilberstein, J. (2006). Back pain emergencies. *Med Clin North Am*, Vol. 90, pp.505-23.

- Wood, B.C. (1993). Hormone treatments in the common 'hormone-dependent' carcinomas. *Palliat Med*, Vol. 7, pp.257-72.
- Woodward, E.J. & Coleman, R.E. (2010). Prevention and treatment of bone metastases. *Curr Pharm Des*, Vol. 16, pp.2998-3006.
- Young, H., Baum, R., Cremerius, U., Herholz, K., Hoekstra, O., Lammertsma, A.A., Pruim, J. & Price, P. (1999). Measurement of clinical and subclinical tumour response using [18F]-fluorodeoxyglucose and positron emission tomography: review and 1999 EORTC recommendations. European Organization for Research and Treatment of Cancer (EORTC) PET Study Group. *Eur J Cancer*, Vol. 35, pp.1773-82.

IntechOpen



Low Back Pain Pathogenesis and Treatment

Edited by Dr. Yoshihito Sakai

ISBN 978-953-51-0338-7

Hard cover, 244 pages

Publisher InTech

Published online 14, March, 2012

Published in print edition March, 2012

Low back pain is a common disorder which affects the lumbar spine, and is associated with substantial morbidity for about 80% of the general population at some stages during their lives. Although low back pain usually is a self-limiting disorder that improves spontaneously over time, the etiology of low back pain is generally unknown and the diagnostic label, "non-specific low back pain", is frequently given. This book contains reviews and original articles with emphasis on pathogenesis and treatment of low back pain except for the rehabilitative aspect. Consisting of three sections, the first section of the book has a focus on pathogenesis of low back pain, while the second and third sections are on the treatment including conservative and surgical procedure, respectively.

How to reference

In order to correctly reference this scholarly work, feel free to copy and paste the following:

Joshua E. Schroeder, Yair Barzilay, Amir Hasharoni, Leon Kaplan, José E. Cohen and Eyal Itshayek (2012). Evaluation and Management of Lower Back Pain in Oncological Patients, Low Back Pain Pathogenesis and Treatment, Dr. Yoshihito Sakai (Ed.), ISBN: 978-953-51-0338-7, InTech, Available from: <http://www.intechopen.com/books/low-back-pain-pathogenesis-and-treatment/evaluation-and-management-of-lower-back-pain-in-oncological-patients>

INTECH
open science | open minds

InTech Europe

University Campus STeP Ri
Slavka Krautzeka 83/A
51000 Rijeka, Croatia
Phone: +385 (51) 770 447
Fax: +385 (51) 686 166
www.intechopen.com

InTech China

Unit 405, Office Block, Hotel Equatorial Shanghai
No.65, Yan An Road (West), Shanghai, 200040, China
中国上海市延安西路65号上海国际贵都大饭店办公楼405单元
Phone: +86-21-62489820
Fax: +86-21-62489821

© 2012 The Author(s). Licensee IntechOpen. This is an open access article distributed under the terms of the [Creative Commons Attribution 3.0 License](#), which permits unrestricted use, distribution, and reproduction in any medium, provided the original work is properly cited.

IntechOpen

IntechOpen