

# We are IntechOpen, the world's leading publisher of Open Access books Built by scientists, for scientists

**4,800**

Open access books available

**122,000**

International authors and editors

**135M**

Downloads

Our authors are among the

**154**

Countries delivered to

**TOP 1%**

most cited scientists

**12.2%**

Contributors from top 500 universities



**WEB OF SCIENCE™**

Selection of our books indexed in the Book Citation Index  
in Web of Science™ Core Collection (BKCI)

Interested in publishing with us?  
Contact [book.department@intechopen.com](mailto:book.department@intechopen.com)

Numbers displayed above are based on latest data collected.

For more information visit [www.intechopen.com](http://www.intechopen.com)



# ABC Transporters in Human Placenta and Their Role in Maternal-Fetal Cholesterol Transfer: ABCA1 Candidate Target

Jayonta Bhattacharjee<sup>1,2</sup>, Francesca Ietta<sup>1</sup>, Roberta Romagnoli<sup>1</sup>, Nicoletta Bechi<sup>1</sup>, Isabella Caniggia<sup>2</sup> and Luana Paulesu<sup>1</sup>

<sup>1</sup>Department of Physiology, University of Siena, Siena,

<sup>2</sup>Samuel Lunenfeld Research Institute, Mount Sinai Hospital, Toronto,

<sup>1</sup>Italy

<sup>2</sup>Canada

## 1. Introduction

Placenta is the highly specialized organ of pregnancy, in association with the fetal membranes and amniotic fluids; placenta supports normal fetal growth and development. Primary function of the placenta in all species is to selective transfer of nutrients and waste products between mother and fetus. It participates in the transfer and metabolism of carbohydrates, amino acids, lipids, water, inorganic ions, minerals and vitamins. Respiratory gases also transfer between mother and fetus through placenta. Another important function of placenta is the endocrine function. Adequate nutrient transfer by placenta between mother and fetus during pregnancy is crucial for proper fetal growth and development. Among all nutrients, cholesterol is important as well for proper fetal growth. Embryo and fetal growth phase is the rapid cellular proliferative stage. In this phase, cells differentiate into various cell types. That's why; cells need all the substrates for their proper growth. As long as cells are proliferating, the important cellular structure such as membrane is also vital for the proliferative cells. One of the principal and key components of cell membrane is cholesterol. Cholesterol maintains membrane fluidity and lipid rich microdomain. Any alteration of cellular cholesterol content may lead to diverse complication in different metabolic processes. Cholesterol is the precursor of bile acids, steroid hormones and metabolic regulators such as oxysterols.

Cholesterol is also essential for both activation and propagation of Hedgehog signaling. Sonic Hedgehog (SHH) is responsible for patterning and development of the central nervous system (Porter et al., 1996; Marti & Bovolenta, 2002; Cooper et al., 2003). There are two routes by which cholesterol is available to the fetus, *de novo* synthesis and exogenous source. It has been believed that cholesterol required by the fetus is synthesized by *de novo* cholesterol synthesis by the fetus itself. The individual lacking *de novo* cholesterol synthesis may develop lethal congenital birth defects (Kelley, 2000; Herman, 2003). Convincing evidence shows that maternal cholesterol is a source of fetal cholesterol (Napoli et al., 1997; McConihay et al., 2001). *In vivo* studies in murine and *in vitro* assays using the choriocarcinoma cell line, BeWo have

demonstrated that cholesterol is transported across the trophoblast cells (Schmid et al., 2003; Yoshida & Wada, 2005). ATP-Binding cassette transporter A1 (ABCA1) and ABCG1 are two important transporter involved in cellular cholesterol homeostasis. Recent studies have demonstrated the expression and localization of ABCA1 and ABCG1 in human placenta (Bhattacharjee et al., 2010; Stefulj et al., 2009). Functional involvement of these two transporters in maternal and fetal cholesterol transfer has not been elucidated till now. In this chapter, we will discuss the present knowledge of ABC transporters in human placenta and role of ATP binding cassette transporter A1 (ABCA1) and G1 (ABCG1) on maternal-fetal cholesterol transfer and metabolism through placenta.

## 2. Sources of fetal cholesterol

Cholesterol is obligatory for all tissues and cells to maintain normal structure and function. The rapidly growing tissues need a significant amount of cholesterol to maintain their cell membrane cholesterol unit, the structural unit of cell membrane. The embryo and fetus are continuously growing and increasing their mass more rapidly compared with adult tissues. In this growth phase, cholesterol, including all other nutrients are crucial for proper development. Cholesterol is available to the tissues by *de novo* synthesis and from exogenous source (i.e. from circulation/diet). It is available to the circulation mainly from diet. The fetal circulation receives maternal circulating cholesterol through placenta. Considering number of evidences show that fetus gets circulation from maternal cholesterol along with its own *de novo* synthesis (Napoli et al., 1997; McConihay et al., 2001). Fetal development includes two different period of growth one is from fertilization to eight week of gestation (embryo) and another is from ninth week of gestation to birth (fetus). At early development, blastocyst is formed by outer layer of trophoblast cells, which invade the endometrium and inner cell mass, and develops into embryo. During this period, maternal blood and remnants of cells digested from trophoblast invasion, immerse the conceptus is an important source of cholesterol (Woollett LA, 2008). Along with the progression of gestation, maternal blood flows into the lacunae of the uterus and forms uteroplacental circulation. The spiral arteries remain plugged in early gestation thus approximately between fourth and eight week of gestation, only small amount of maternal blood leak into the lacunae or intervillous space of the placenta (Burton et al., 1999; Hustin & Schaaps, 1987). At that period, intervillous space contains uterine gland secretion and tiny amount of maternal blood. The uterine glands secrete nutrients, including lipids, to the intervillous space as well (Burton et al., 2002; Hempstock et al., 2004). Thus intervillous space comprises maternal blood containing cholesterol-carrying lipoproteins, and uterine gland secretions, such as lipids and presumably cholesterol. The nutrients would be taken up by syncytiotrophoblasts, will exit through the basolateral side, and diffuse along the stromal channels to the extracoelomic cavity (Woollett, 2008). In an elegant review, Woollett (2008) has discussed the possible source of fetal cholesterol. The Secondary Yolk Sac (SYC) is floating in extracoelomic cavity, the transport of maternally derived nutrients, possibly from the uterine gland secretions and from the maternal circulation, to the embryo occurs through SYC (Enders & King, 1993; Hopkins et al., 1987; Lanford et al., 1991; Perda et al., 1994; Shi et al., 1985). The need for nutrition increases with the progression of gestation and necessitate a more efficient method of nutrient exchange. Thus, the mode of transport of maternally derived nutrition to the fetus becomes primarily hemotrophic as gestation progresses and the placenta becomes the primary route of transport (Woollett, 2008). The spiral arteries are present from the fourth week of gestation but become

functional from eighth week of gestation. When the spiral arteries start functioning, the maternal blood enters into the intervillous space and bathes the syncytiotrophoblasts of the chorionic villi. Maternal nutrients are taken up by the syncytiotrophoblasts by receptor-mediated as well as receptor-independent processes. Once taken up, nutrients cross cells and pass through or between endothelial cells to enter into the fetal circulation (Woollett, 2008). The maternal blood within the intervillous space exchanges three to four times per minute, thus it is an excellent source of nutrients (including cholesterol) for the developing fetus.

### 3. Routes of maternal-fetal cholesterol transfer

We already know from different observations that maternal cholesterol is a source of fetal cholesterol (Napoli et al., 1997; McConihay et al., 2001). *In vivo* studies in murine and *in vitro* assays using the choriocarcinoma cell line, BeWo have demonstrated that cholesterol is transported across the trophoblast cells (Schmid et al., 2003; Yoshida Wada, 2005). The uptake and utilization of cholesterol by trophoblast through very low density lipoprotein (VLDL) receptor, low density lipoprotein receptor-related protein (LRP), LDL receptor, and Scavenger Receptor B 1 (SR-B1) have been reported (Wadsack et al., 2003; Wyne & Woollett, 1998). Placenta is composed of different cell types, including trophoblasts, endothelial cells, fibroblasts, as well as blood cells in the intervillous space and fetal vessels. But the actual barrier between maternal and fetal circulation is made up of trophoblast cells. In order to acquire maternal cholesterol by the fetus, cholesterol must be taken through the apical side of the placental trophoblast cells and exit through the basolateral side of the trophoblast layer to enter into the fetal circulation. Experimental evidence suggests that trophoblasts efflux cholesterol from cells like any other polarized cells (Woollett, 2005). So far three different mechanisms for cholesterol efflux have been proposed namely aqueous diffusion and protein independent pathway based on concentration gradient, SR-B1 mediated efflux and ABCA1 mediated efflux (Rothblat et al., 1999; Yancey et al., 2003). Apparently all the processes may occur in placenta through the basolateral membrane of trophoblast layer as placenta possesses SR-B1 (Wadsack et al., 2003) and ABCA1 (Langmann et al., 1999). ABCA1 is one of the efflux transporters highly expressed in human placenta (Langmann et al., 1999). It performs cholesterol and phospholipids efflux to lipid poor Apolipoprotein A-1 (ApoA-1), precursor of high density lipoprotein.

### 4. ABC transporters

The human genome consists of a total of 49 Adenosine-Triphosphate-Binding Cassette (ABC) genes belonging to seven subfamilies named ABCA, ABCB, ABCC, ABCD, ABCE, ABCF and ABCG. The placenta serves an important role as protective barrier as well as in normal fetal development, where ABC transporter plays significant role. ATP-Binding cassette (ABC) transporters perform role in the distribution of nutrients and exchange of metabolites across the placenta. Until now, a number of ATP Binding cassette transporters have been found in human placenta. These include multidrug resistance gene product 1 (MDR1/ABCB1), also known as P-glycoprotein (P-gp), multidrug resistance associated protein (MRPs), Breast Cancer Resistance Protein (BCRP/ABCG2), the Multidrug Resistance-Associated Proteins (MRPs/ABCC1-6 and 7-11) and efflux transporter ABCA1 and ABCG1 (Bhattacharjee et al., 2010; Young et al., 2003). Recently, along with ABCA1, ABCG1 has also been detected in cholesterol efflux activities in human placenta (Stefulj et al., 2009; Aye et al., 2010).

#### **4.1 ATP Binding cassette transporter G1 (ABCG1)**

ABCG1 is the transporter responsible for cellular cholesterol efflux. Unlike ABCA1, ABCG1 promotes efflux of cholesterol and oxysterols to HDL whereas ABCA1 predominantly efflux to ApoA1. ABCG1 is expressed both in fetal capillaries and in the syncytiotrophoblast of the placenta (Stefulj et al., 2009; Aye et al., 2010).

#### **4.2 Breast cancer-resistance protein (BCRP)/ABCG2**

Breast cancer resistance protein (BCRP) is an ATP dependent transporter also known as mitoxantrone resistance-associated protein (Allikmets et al., 1998) is highly expressed in the placenta, as well as in the uterus (Langmann et al., 2003) and is localized on the apical surface of the chorionic villi syncytiotrophoblast (Litman et al., 2002). The substrate specificity of BCRP has not been elucidated completely. There is considerable overlap of substrates between BCRP and P-gp (Cooray et al., 2002). These include a variety of anti-cancer agents, organic cations and lipophilic conjugates (Sarkadi et al., 2004). The role of BCRP in placenta is not yet known precisely, but from its structure and localization in the placenta, it is assumed that BCRP functions as protective structure in removing cytotoxic drugs from the fetal tissues.

#### **4.3 P-glycoprotein (P-gp/MDR1/ABCB1)**

P-glycoprotein (P-gp) is the first and best characterized ABC transporter to be identified so far (Juliano & Ling, 1976). P-gp is expressed in human placenta from first trimester to term (Tanabe et al., 2001). It is localized on the apical membrane of placental syncytiotrophoblasts where it is involved in the extrusion of drug substances from placenta. P-gp is involved with protection of the fetus from entry of harmful substances to the fetus (Lankas et al., 1998; Smit et al., 1999; Ushigome et al., 2000; Samtani et al., 2004). P-gp has an extremely broad substrate specificity. It transports lipophilic drugs that are neutral or cationic belongs to diverse therapeutic categories including antimicrobials (e.g. rifampin), antivirals (e.g. anti-HIV protease inhibitors), anti-arrhythmic (e.g. verapamil) and anti-neoplastics (e.g. vincristine).

#### **4.4 Multidrug resistance gene products 1 and 3 (MDR1, 3) / (ABCB1, ABCB4)**

Multidrug resistance gene products are expressed in placenta both in messenger RNA and protein levels (MacFarland et al., 1994). MDR1/ABCB1 is located at the apical surface of the placental syncytiotrophoblast membrane, where it is responsible for the efflux of substrates from trophoblast into the maternal plasma (Litman et al., 2001; Keppler et al., 1998; Bera et al., 2001). These transports actively extrude different substrates from the cytoplasm including different drugs. Typical substrates of this transporter include some hydrophobic or slightly charged compounds. The hydrophobic/cationic conjugates and drugs include estradiol glucuronide, glucocorticoids, dexamethasone, verapamil, nifedipine, digoxin, paclitaxel, etoposide, vinblastine, doxorubicin, protease inhibitors, fexofenadine, methadone, phenytoin, cyclosporine A, lovastatin etc.

#### **4.5 Multi-drug-resistance associated proteins (MRPs)**

Multidrug resistance associated proteins (MRPs) are another family of ATP dependent efflux transporter. There are eight known MRPs so far, six of which have been fully

sequenced (Borst et al., 2000). Their size and function vary greatly among the transporters. It is primarily speculated that MRPs appear to efflux polar compounds and conjugated metabolites in particular unconjugated bilirubin and bile acids (Borst et al., 2000; Bodó et al., 2003). Although there are some controversies about the cellular localization of different MRPs in human placenta, most of the MRPs (MRP1-6, and MRP7) have been found in human placenta (Langmann et al., 2003; Litman et al., 2001; Keppler et al., 1998; Bera et al., 2001; Ozvegy et al., 2001; Sato et al., 2003; Pascolo et al., 2003). MRPs proteins are associated with the removal of glutathione (GSH), glucuronide or sulphate conjugated metabolites from cells (Mathias et al., 2005; St-Pierre et al., 2002). It has also been reported that some unmodified toxins and drugs are transported by the MRP family (Keppler et al., 1998; Nagashige et al., 2003). The specific roles of MRPs in placenta have not been defined, but they perform efflux of polar conjugates xenobiotics or metabolites of endogenous compounds (Pascolo et al., 2003; Leazer & Klaassen, 2003).

#### 4.6 ABCA1

ABCA1 is a 2,261-amino-acid integral membrane protein that comprises two halves of similar structure (Fitzgerald et al., 2001). Each half has a transmembrane domain containing six helices and a nucleotide binding domain (NBD) with two conserved peptide motifs known as Walker A and Walker B, which are present in many proteins that utilize ATP, and a Walker C signature unique to ABC transporters (Dean et al., 2001). ABCA1 is predicted to have an NH<sub>2</sub> terminus oriented into the cytosol and two large extracellular loops that are highly glycosylated and linked by one or more cysteine bonds (Dean et al., 2001; Bungert et al., 2001).

##### 4.6.1 ABCA1 in cellular cholesterol efflux and reverse cholesterol transport

Cholesterol is the integral part of eukaryotic membranes and the precursor of bile acids and of all the steroid hormones. In humans, approximately two thirds of cholesterol is transported by low-density lipoproteins (LDLs) and ~20% by high-density lipoproteins (HDLs); the remaining cholesterol is carried by very low density lipoprotein (VLDL) particles (Attie, 2007). The risk of premature cardiovascular disease is positively correlated with LDL levels and negatively correlated with HDL levels (Attie, 2007). HDL functions as cholesterol acceptor and promotes cholesterol efflux from cells. The ability of HDL to deliver cholesterol to the liver, where it can be secreted into bile and then excreted in the feces, completes a pathway that has been termed 'reverse cholesterol transport' (Attie, 2007). Although ABCA1 was identified as having role in macrophage engulfment of apoptotic cells, the special role of ABCA1 in cholesterol efflux was evident in the year 1999. At 1999, several authors published articles that identified ABCA1 gene mutation in two HDL- deficiency syndromes: familial hypoalphalipoproteinemia and Tangier disease (Rust et al., 1999; Lawn et al., 1999). Since, ABCA1's cholesterol efflux is Apolipoprotein A1 (ApoA1) dependent, ABCA1/ApoA1 association is very important for proper cholesterol efflux. The association of ABCA1 and ApoA1 is not clear enough. Some studies suggest that apoA-1 binds to ABCA1 directly (Oram et al., 2000; Wang et al., 2000; Fitzgerald et al., 2002), whereas some suggest ApoA-1 binding to the cell surface results in a relatively static complex (Smith et al., 2002). An alternative mechanism recently proposed by Chambenoit et al. (2001) saying ApoA-1 initially binds to a lipid domain formed by ABCA1 activity, the "tethered" apoA-1 can then diffuse within the plane of the membrane until contacting ABCA1 (Chambenoit et al. 2001). Regardless of the

nature of its interaction with the cell, apoA-1 has been shown to selectively remove cholesterol that would otherwise be used by Acyl-CoA:cholesterol acyltransferase (ACAT) for esterification/storage (Li et al., 1997). It would stand to reason that an important function of ABCA1 is to promote removal of excess cellular cholesterol which would otherwise be esterified and potentially lead to "foam cell" formation in macrophages. Therefore, two different models have been proposed for the process of apolipoprotein lipidation by ABCA1. The first model suggests that apolipoproteins interact with ABCA1 at the cell surface and excess cellular cholesterol is transported to the plasma membrane by a vesicular mechanism, possibly packaged in the Golgi (Oram, 2003). The second model is based on evidence suggesting that ApoA1 and ABCA1 interact at the cell surface and then internalized where lipidation actually takes place in the lumen of an endosome from which the cholesterol is taken (Takahashi and Smith, 1999; Santamarina-Fojo et al., 2001). ABCA1 has been shown to recycle between the plasma membrane and the endosomal/lysosomal compartments (Neufeld et al., 2001). However, this recycling may be involved in the regulation of ABCA1 degradation rather than its function (Oram, 2003). It should also be considered that both models are correct and contribute in some way to pre- $\beta$  HDL particle formation. There is some evidence that ABCA1 is actually a phospholipid "pump" or "floppase" instead of moving cholesterol itself. One study was able to pharmacologically uncouple phospholipid from cholesterol removal (Fielding et al., 2000). This finding has led to a hypothesis that ABCA1 lipidates ApoA1 with phospholipid only and the newly formed pre- $\beta$  HDL obtains cholesterol by diffusional means from cholesterol-rich lipid rafts or caveolae in a "two-step" mechanism (Fielding et al., 2000; Wang et al., 2001). Others have found that ABCA1 does not use caveolae or lipid raft cholesterol (Mendez et al., 2001). Interestingly, one group did report that ABCA1 promotes cholesterol removal from "lubrol rafts" (defined by the authors as lipid rafts soluble in Triton-X, but insoluble in the detergent lubrol) (Drobnik et al., 2002). ABCA1 activity has also been shown to increase outer plasma membrane leaflet phosphatidylserine(PS) exposure-leading to speculation that PS may play a role in ApoA1 binding and lipidation (Hamon et al., 2000; Chambenoit et al. 2001). This result was more closely examined and PS was found not to mediate apoA1 binding or cholesterol removal (Smith, 2002). The increase in PS exposure is likely a side effect of prolonged, increased ABCA1 expression which can damage cell membranes (Oram, 2003). Although ABCA1 may function as a phospholipid translocase, it is feasible that cholesterol is still able to be moved with the phospholipid (Oram, 2002). ABCA1 mediated transport of other molecules have been discovered including  $\alpha$ -tocopherol (Oram et al., 2001), ApoE (Von Eckardstein et al., 2001), and interleukin-1 $\beta$  (Zhou et al., 2002). P-glycoprotein, a close relative of ABCA1, is predicted to have a central pore or pocket of 3 nm in diameter (Higgins et al., 1997). An opening of this size would allow many molecules to be transported together. Therefore, considering the variety of molecules transported by ABCA1, it can be envisioned that ABCA1 functions by transporting lipophilic molecules complexes with phospholipid including cholesterol (Oram, 2002). Indeed, using a transfected cell line with an inducible ABCA1 promoter revealed that a "two-step" cholesterol removal mechanism is unlikely (Vaughan & Oram, 2003).

#### 4.6.2 ABCA1 in cellular apoptosis and proliferation

Hamon et al (2000) provided evidence that several cellular functions are controlled by ABC1 (now said ABCA1). Optimal engulfment of cell corpses generated by apoptosis is hampered by lack of ABC1 function and enhanced by its over expression. Very recently, Yvan-Charvet

et al (2010) showed ABCA1, ABCG1, and HDL inhibit the proliferation of hematopoietic stem and multipotential progenitor cells (HSPCs). They suggested the proliferation of HSPCs is regulated by cholesterol efflux mechanisms involving LXRs, ABCA1, ABCG1, and HDL (Yvan-Charvet et al., 2010). In the same article, Yvan-Charvet et al (2010) speculated that increased membrane cholesterol content secondary to ABC transporter deficiency results in increased cell-surface expression of the common  $\beta$  subunit of the IL-3/GM-CSF receptor that, in turn leads to increased downstream Ras/Erk signaling and increased proliferative response to IL-3 and GM-CSF. In mammalian cells, cholesterol, glycolipids, and proteins are organized in lipid rafts in the plasma membrane. ABCA1 and ABCG1 transport excess cholesterol from plasma membrane to form HDL. In HPSCs, growth factor receptors are organized in lipid rafts to promote receptor signaling and consequently, cell proliferation and migration (Giebel et al., 2004). As cholesterol overload can cause havoc in cells, its concentration is regulated by several mechanisms. Excess cholesterol is removed by ATP binding cassette (ABC) transporters in the plasma membrane, which move cholesterol to extracellular HDL particles at the cell surface (Tall, 2008). Recently it was shown in HSPC cells that when cholesterol is removed from this type of cells, the membrane raft disassemble, receptor signaling (such as through the IL-3 receptor) is hampered, and receptor dependent outcomes such as cell proliferation are reduced (Yvan-Charvet et al., 2010; Hansson & Björkholm, 2010).

#### 4.6.3 ABCA1 in inflammation

Until now, we have seen the function of ABCA1 in cellular cholesterol efflux, cellular apoptosis, proliferation and reverse cholesterol transport and as an important target for atherosclerosis treatment (Tall, 2008; Schmitz & Grandl, 2008). Several recent studies showed that ABCA1 is also involved in inflammation and/or immune response. Studies with ABCA1 knockout mice demonstrated the relationship between ABCA1 and inflammation (Yvan-Charvet et al., 2008; Koseki et al., 2007; Schmitz et al., 1999; Aiello et al., 2003; Zhu et al., 2008; Francone et al., 2005; McNeish et al., 2000; Christiansen-Weber et al., 2000). Although the precise mechanism that ABCA1 plays a key role in modulating inflammatory response remains to be elucidated, several studies shown that the cholesterol export activity of ABCA1 could account for its potent anti-inflammatory properties (Koseki et al., 2007; Zhu et al., 2008; Murphy et al., 2008; Tellier et al., 2008). ABCA1 has been also reported in the regulated secretion of macrophage migration inhibitor factor (MIF) (Flieger et al., 2003). MIF is the pleiotropic multifactorial cytokine with a mostly proinflammatory spectrum of action in the host immune response. MIF is a critical mediator of a number of immune and inflammatory conditions (Calandra & Bucala, 1996; Mitchell & Bucala, 2000; Lue et al., 2002).

#### 4.6.4 ABCA1 in placenta

The existence of ABCA1 in human placenta was first identified by Langmann and his team in mRNA levels in the year of 1999. Thereafter, it received more attention when it is known that maternal cholesterol is an important source of fetal cholesterol and Christiansen-Weber et al (2000) showed ABCA1 malfunction resulted in sever placental malformation, structural abnormalities, intrauterine growth restriction and increased neonatal death. Until now there are few publications showing ABCA1 expression and localization in human placenta. We



showed the expression and localization of ABCA1 at both first trimester and term human placenta (Bhattacharjee et al., 2010).

Western blotting and real time PCR analysis showed that ABCA1 is expressed both in first trimester and term placenta and its expression does not differ between first trimester and term placenta both in protein and mRNA levels (Figure 1). We also showed the localization of ABCA1 by immunohistochemistry and immunofluorescent staining both in first trimester and term placental tissues (Figure 2). We found that ABCA1 is more predominantly localized at the basolateral and infrequently at the apical part of the cytotrophoblast cell layer of first trimester human placenta (Bhattacharjee et al., 2010). It was also localized in some other cell types of the placenta including stromal and endothelial cells of chorionic villi. In term placenta, the localization was observed in few villous cytotrophoblast and endothelial cells of the placental vasculature. Although, we found a very punctuate staining in the syncytial layer of the placenta some other researchers showed the expression of ABCA1 in the syncytial layer of placental epithelial layer. Different sampling variation and different antibodies might be responsible for not being exact results. In a nut shell, from the

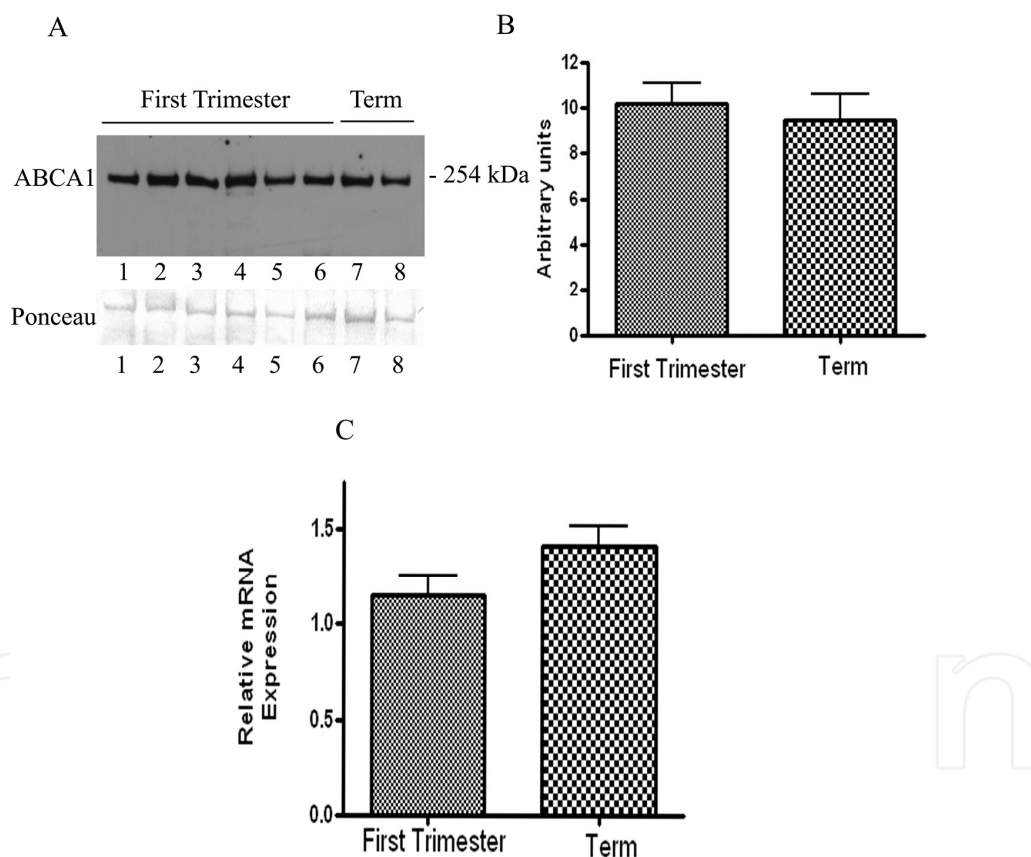


Fig. 1. Western blot and qRT-PCR analysis of ABCA1 in human placenta tissues. (A) Top, representative western blot analysis of ABCA1 protein at first trimester (lanes 1-6) and term human placenta (lanes 7-8) using mouse anti-human ABCA1 monoclonal antibody. Bottom, Membrane stained with ponceau S to assess total loaded protein in each lane. (B) The histogram represents densitometric measurement of western blot bands of first trimester and term placental tissues. (C) Quantification of ABCA1 mRNA in human placenta during the first trimester and term of gestation using qRT-PCR (Reproduced from Bhattacharjee et al., 2010 with the permission from Elsevier).

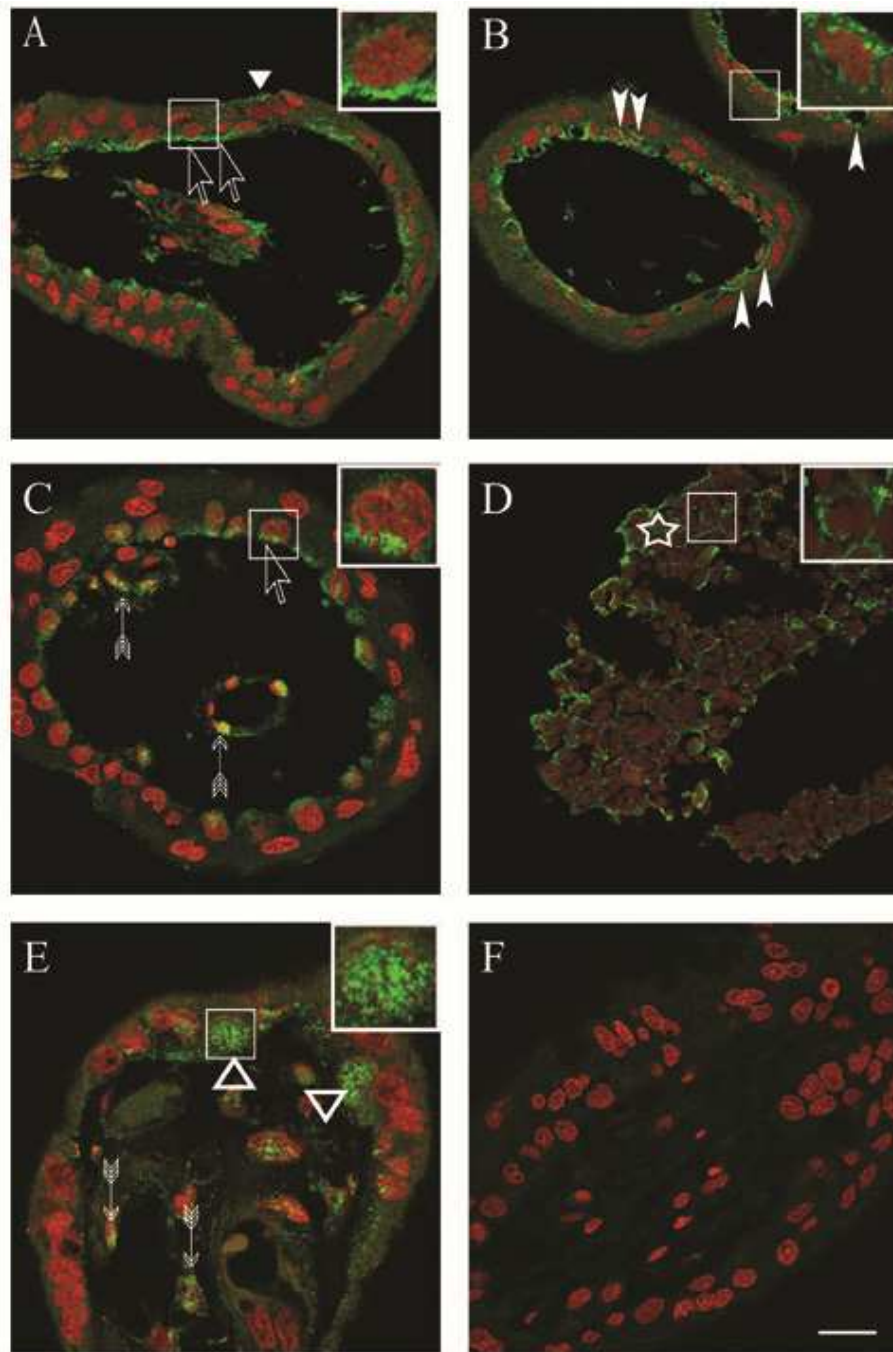


Fig. 2. Confocal laser scanning microscopic localization of ABCA1 using mouse anti-human ABCA1 monoclonal antibody in first trimester (A-D) and term (E) human placenta. Positive staining of ABCA1 is shown in green. Red staining represents nuclei (propidium iodide stained). In first trimester placenta, ABCA1 staining was found in the basolateral (windows pointers) and in the apical part (arrow heads) of villous cytotrophoblast cell membrane, rarely observed staining in syncytial brush border (triangle) and in endothelial cells (arrows) of the villous core (A-C). (D) ABCA1 positive staining in the cell membrane of most extravillous cytotrophoblast cells (star frame). In term placenta (E), diffuse ABCA1 positive staining in the cytotrophoblast cells (triangle frame). (F) Negative control in first trimester placenta. Inserts show the higher magnification of the selected part. Scale bar= 20 μm for all the images (Reproduced from Bhattacharjee et al., 2010 with the permission from Elsevier).

studies till now, it is evident that ABCA1 is expressed both in cytotrophoblast and syncytiotrophoblast layer of the placental along with Hofbauer cells and endothelial cells of the placenta. These findings together support the role of ABCA1 in fetal-placental transport function. The different localization of ABCA1 in different cell types may have different functions, which remains to be elucidated.

In term placental tissues, ABCA1 is present in cytotrophoblast cells but diffuse in the whole cell without any specific localization. Some staining in the term placental cytotrophoblast cells suggests it to be in intracellular endocytic compartment. ABCA1 is actually a membrane transporter although its expression in the intracellular endocytic compartment has also been reported in different cell types (Hamon et al., 2000; Cooper et al., 2003).

#### 4.6.5 Role of ABCA1 in Cholesterol transfer through human placenta

As placenta is the vital organ and a site for nutrient and waste exchange between mother and fetus, placental transport and metabolism of cholesterol and lipids are critical for the fetal development and its survival. Cholesterol is an integral part of cell membranes, precursor of steroid hormones such as progesterone and metabolic mediators such as oxysterol (Woollett, 2005). Cholesterol is essential for both activation and propagation of Hedgehog signaling (SHH), responsible for patterning and development of the central nervous system (Porter et al., 1996; Marti & Bovolenta, 2002; Cooper et al., 2003). There are two routes by which cholesterol is available to the fetus, the *de novo* synthesis and exogenous source. The individual lacking *de novo* cholesterol synthesis may develop lethal congenital birth defects (Kelley, 2000; Herman, 2003).

Dysfunction of ABCA1 in mice resulted in severe placental malformation with structural abnormalities, intrauterine growth retardation and increased neonatal death (Christiansen-Weber et al., 2000). Reduced expression of placental ABCA1 was observed in women with antiphospholipid syndrome (Albrecht et al., 2007) and ABCA1 was reported as a potential target for *in utero* therapy of Smith-Lemli-Opitz syndrome (Lindegaard et al., 2008). Recently, Stefulj et al. (2009) demonstrated the presence of ABCA1 in endothelial cells of term placenta and its involvement in cholesterol transfer towards fetal circulation. However, no information is available on the regulation of ABCA1 expression and its functions in human placenta.

By using fluorescent tagged cholesterol in first trimester placental explants as an *ex-vivo* model, we found that ABCA1 is significantly involved in cholesterol efflux in human placenta explants (Unpublished observation). Further functional studies are required to explore the role of ABCA1 in maternal fetal cholesterol transfer and metabolism. Recently, there are few studies showed that silencing of ABCA1 and pharmacological inhibition of ABCA1 by glyburide decreased cholesterol efflux to Apolipoprotein A-1 in cultured primary trophoblast cells (ApoA-1) (Aye et al., 2010). On the other hand they also showed that endogenous receptor induction by synthetic LXR  $\alpha/\beta$  inducer have increased ABCA1 and enhanced cholesterol efflux to ApoA-1 (Aye et al., 2010).

Two mechanisms have been suggested to explain ABCA1-mediated cholesterol efflux to apoA-1 (Takahashi & Smith, 1999; Oram et al., 1991; Chen et al., 2001). The apoA-1 forms complexes with phospholipid and cholesterol at the cell surface in a process promoted by ABCA1 activity (Chen et al., 2001). Alternatively, apoA1 binds ABCA1 at the cell surface

and the complex is subsequently internalized and targeted to late endosomes, where apoA1 picks up lipids. The apolipoprotein-ABCA1-lipid complexes are then resecreted from the cell by exocytosis (Chen et al., 2001). Azuma et al. (2009) have shown that apoA-1 internalizes inside the cell and colocalizes with the cell surface-derived ABCA1 on endosomal compartment contributing to HDL formation when excess lipoprotein-derived cholesterol has accumulated in cells.

Thus in light of our results we can speculate that at term of gestation, the pathway involving the internalization of apoA1/ABCA1 complex might prevail on the other one operating possibly at first trimester.

During the first trimester of pregnancy cholesterol is crucially important for both fetal and placenta development (Napoli et al., 1997). Along with *de novo* cholesterol synthesis, fetal plasma cholesterol concentration is significantly correlated with the maternal one and the significance is greatest in the fetuses that are less than 6 months old (Woollett, 2001) suggesting maternal cholesterol supply is crucially important during the earlier phases of development.

Although it is believed that maternal cholesterol level is correlated with fetal cholesterol, still now no direct evidence exists about the maternal cholesterol entrance through the placenta nor cholesterol trafficking and efflux by ABCA1 in human first trimester placenta. By using a chorioncarcinoma cell line Schmid et al (2003) have shown the ability of placental cells to transport maternal derived cholesterol. In the same study the ABCA1 mediated cholesterol efflux was not apparent, and despite multiple manipulations to up-regulate the expression of ABCA1, there was no increase of cholesterol efflux to exogenous apoA1.

Significant involvement of ABCA1 in cholesterol efflux at the maternal fetal interface has been recently demonstrated by several studies on endothelial and cytotrophoblast primary isolated cells from term placental tissues (Stefulj et al., 2009; Aye et al., 2010).

## 5. Other ABC transporters involved in cholesterol transfer

Many ABC transporters are involved in cholesterol homeostasis by participating transferring lipid molecules including cholesterol. Unlike ABCA1 and ABCG1, ABCG5 and ABCG8 expressed in liver, and function in the secretion of biliary cholesterol. ABCG5 and ABCG8 restrain cholesterol absorption in the lumen of the intestine by excreting absorbed cholesterol. These transporter help in the removal of excess cholesterol from the body and maintain cholesterol homeostasis. ABCG1 is also expressed in the brain along with placenta. ABCG1 and ABCG4 are expressed in the brain, function in cholesterol metabolism in the central nervous system (CNS) (Matsuo, 2010). ABCA2 has also been reported to be involved in cholesterol efflux. ABCA2 is also expressed in animal and human placenta but its role in placenta has not been studied precisely still now (Burke et al., 2009).

## 6. Conclusion and future explorations

Although cholesterol is the fundamental factor for normal fetal development, there is evidence suggesting that an excess of maternal cholesterol can have both acute and chronic detrimental effect to the fetus health. Maternal hypercholesterolemia is correlated with the fatty streaks aortas in the fetus that persist in childhood (Napoli et al., 1997). This fatty

streak formation has been suggested as a programming mechanism target for the development of atherosclerosis later in life (Palinski et al., 2002). Considering the importance and detrimental efflux of cholesterol, cholesterol transferring pathway including ABC transporter can be a target for *in utero* therapy to control the anomalies derived from cholesterol deficiency or adequacy. In a recent study ABCA1 has been detected as a target for *in utero* therapy of Smith-Lemli-Opitz Syndrome (SLOS), a congenital anomaly due to error of cholesterol synthesis (Lindegaard et al., 2008).

In addition to its lipid export activity, it has been demonstrated that ABCA1 plays an important role in immune responses (Zhu et al., 2008; Tanc et al., 2009; Yvan-Charvet et al., 2010). Mice lacking ABCA1 have an enhanced inflammatory response to lipopolysaccharide (LPS) (McNeish et al., 2000). Incubating apoA-1 with activated ABCA1-expressing macrophages suppressed production of the inflammatory cytokines interleukin 1 $\beta$  (IL-1 $\beta$ ), interleukin-6 (IL-6), and tumor necrosis factor- $\alpha$  (TNF- $\alpha$ ) (Tanc et al., 2009). Thus the expression of ABCA1 in the villous and extravillous trophoblast may reflect additional functions other than those involved in cholesterol homeostasis. Our group has recently been demonstrated that 17 beta estradiol modulate placental MIF secretion by regulating the expression of ABCA1 transporter protein (Ietta et al., 2010).

Although ABCA1 and ABCG1 are involved in placental cholesterol efflux, this is more likely to occur by the involvement of other mechanisms along with simple diffusion such as via SR-B1, fatty acid-binding proteins (FABPs) and other transporters. Further studies on these transporters will clarify the complete placental cholesterol transfer mechanisms.

## 7. References

- Aiello RJ, Brees D, Francone OL. 2003. ABCA1-deficient mice: insights into the role of monocyte lipid efflux in HDL formation and inflammation. *Arterioscler Thromb Vasc Biol*, 23(6):972-980.
- Albrecht C, Soumian S, Tetlow N, Patel P, Sullivan MH, Lakasing L, Nicolaidis K, Williamson C. 2007. Placental ABCA1 expression is reduced in primary antiphospholipid syndrome compared to pre-eclampsia and controls. *Placenta*, 28(7): 701-708.
- Allikmets, Schriml LM, Hutchinson A, Romano-Spica V, Dean M. 1998. A human placenta-specific ATP-binding cassette gene (ABCP) on chromosome 4q22 that is involved in multidrug resistance. *Cancer Res*, 58(23): 5337-5339.
- Attie AD. 2007. ABCA1: at the nexus of cholesterol, HDL and atherosclerosis. *Trends Biochem Sci*, 32(4):172-179.
- Aye IL, Waddell BJ, Mark PJ, Keelan JA. 2010. Placental ABCA1 and ABCG1 transporters efflux cholesterol and protect trophoblasts from oxysterol induced toxicity. *Biochim Biophys Acta*, 1801(9):1013-1024.
- Azuma Y, Takade M, Shin HW, Kioka N, Nakayama K, Ueda K. 2009. Retroendocytosis pathway of ABCA1/apoA-I contributes to HDL formation. *Genes Cells*, 14(2): 191-204.
- Bera TK, Lee S, Salvatore G, Lee B, Pastan I. 2001. MRP8, a new member of ABC transporter superfamily, identified by EST database mining and gene prediction program, is highly expressed in breast cancer. *Mol Med*, 7(8): 509-516.

- Bhattacharjee J, Ietta F, Giacomello E, Bechi N, Romagnoli R, Fava A, Paulesu L. 2010. Expression and localization of ATP binding cassette transporter A1 (ABCA1) in first trimester and term human placenta. *Placenta*, 31(5):423-430.
- Bodó A, Bakos E, Szeri F, Váradi A, Sarkadi B. 2003 The role of multidrug transporters in drug availability, metabolism and toxicity. *Toxicol Lett*, 140-141: 133-143.
- Borst P, Evers R, Kool M, Wijnholds J. 2000. A family of drug transporters: the multidrug resistance-associated proteins. *J Natl Cancer Inst*, 92: 1295-1302.
- Bungert S, Molday LL, and Molday RS. 2001. Membrane topology of the ATP binding cassette transporter ABCR and its relationship to ABC1 and related ABCA transporters: identification of N-linked glycosylation sites. *J Biol Chem*, 276(26): 23539-23546.
- Burton GJ, Jauniaux E, Watson AL. 1999. Maternal arterial connections to the placental intervillous space during the first trimester of human pregnancy: the Boyd Collection revisited. *Am J Obstet Gynecol*, 181(3):718-724
- Burton GJ, Watson AL, Hempstock J, Skepper JN, Jauniaux E. 2002. Uterine glands provide histiotrophic nutrition for the human fetus during the first trimester of pregnancy. *J Clin Endocrinol Metab* 87(6):2954-2959.
- Calandra T, Bucala R. 1996. Macrophage migration inhibitory factor: a counterregulator of glucocorticoid action and critical mediator of septic shock. *J Inflamm*, 47(1-2): 39-51.
- Chambenoit O, Hamon Y, Marguet D, Rigneault H, Rosseneu M, Chimini G. 2001. Specific docking of apolipoprotein A-I at the cell surface requires a functional ABCA1 transporters. *J Biol Chem*, 276(13): 9955-9960.
- Chen W, Sun Y, Welch C, Gorelik A, Leventhal AR, Tabas I, Tall AR. 2001. Preferential ATP-binding cassette transporter A1-mediated cholesterol efflux from late endosomes/lysosomes. *J Biol Chem*, 276(47): 43564-43569.
- Christiansen-Weber TA, Voland JR, Wu Y, Ngo K, Roland BL, Nguyen S, Peterson PA, Fung-Leung WP. 2000. Functional loss of ABCA1 in mice causes severe placental malformation, aberrant lipid distribution, and kidney glomerulonephritis as well as high-density lipoprotein cholesterol deficiency. *Am J Pathol*, 157(3):1017-1029.
- Cooper MK, Wassif CA, Krabowiak PA, Taipale J, Gong R, Kelley RI, Porter FD, Beachy PA. 2003 . A defective response to Hedgehog signaling in disorders of cholesterol biosynthesis. *Nat Genet*, 33(4):508-513.
- Cooray HC, Blackmore CG, Maskell L and Barrand MA. 2002. Localisation of breast cancer resistance protein in microvessel endothelium of human brain. *Neuroreport*, 13 (16): 2059-2063.
- Dean M, Hamon Y, Chimini G. 2001. The human ATP-binding cassette (ABC) transporter superfamily. *J Lipid Res*, 42(7): 1007-1017.
- Drobnik W, Borsukova H, Böttcher A, Pfeiffer A, Liebisch G, Schütz GJ, Schindler H, Schmitz G. 2002. Apo AI/ABCA1-dependent and HDL3-mediated lipid efflux from compositionally distinct cholesterol-based microdomains. *Traffic*, 3(4): 268-278.
- Enders AC, King BF. 1993. Development of the human yolk sac. In *The Human Yolk Sac and Yolk Sac Tumors*, ed. FF Nogales, pp. 33-47. Springer-Verlag, ISBN 3540560319, 0387560319, Berlin, New York.

- Fielding PE, Nagao K, Hakamata H, Chimini G, Fielding CJ. 2000. A two-step mechanism for free cholesterol and phospholipid efflux from human vascular cells to apolipoprotein A-1. *Biochemistry*, 39(46): 14113-14120.
- Fitzgerald ML, Mendez AJ, Moore KJ, Andersson LP, Panjeton HA, Freeman MW. 2001. ATP-binding cassette transporter A1 contains an NH<sub>2</sub>-terminal signal anchor sequence that translocates the protein's first hydrophilic domain to the exoplasmic space. *J Biol Chem*, 276(18): 15137-15145.
- Fitzgerald ML, Morris AL, Rhee JS, Andersson LP, Mendez AJ, Freeman MW. 2002. Naturally occurring mutations in the largest extracellular loops of ABCA1 can disrupt its direct interaction with apolipoprotein A-I. *J Biol Chem*, 277(36): 33178-33187.
- Flieger O, Engling A, Bucala R, Lue H, Nickel W, Bernhagen J. 2003. Regulated secretion of macrophage migration inhibitory factor is mediated by a nonclassical pathway involving an ABC transporter. *FEBS Lett*, 551(1-3):78-86.
- Francone OL, Royer L, Boucher G, Haghpassand M, Freeman A, Brees D, Aiello RJ. 2005. Increased cholesterol deposition, expression of scavenger receptors, and response to chemotactic factors in Abca1-deficient macrophages. *Arterioscler Thromb Vasc Biol*, 25(6):1198-1205.
- Giebel B, Corbeil D, Beckmann J, Höhn J, Freund D, Giesen K, Fischer J, Kögler G, Wernet P. 2004. Segregation of lipid raft markers including CD133 in polarized human hematopoietic stem and progenitor cells. *Blood*, 104(8): 2332-2338.
- Hamon Y, Broccardo C, Chambenoit O, Luciani MF, Toti F, Chaslin S, Freyssinet JM, Devaux PF, McNeish J, Marguet D, Chimini G. 2000. ABC1 promotes engulfment of apoptotic cells and transbilayer redistribution of phosphatidylserine. *Nat Cell Biol*, 2(7): 399-406.
- Hansson GK, Björkholm M. Medicine. 2010. Tackling two diseases with HDL. *Science*, 328(5986):1641-1642.
- Hempstock J, Cindrova-Davies T, Jauniaux E, Burton GJ. 2004. Endometrial glands as a source of nutrients, growth factors and cytokines during the first trimester of human pregnancy: a morphological and immunohistochemical study. *Reprod Biol Endocrinol* 2:58-72.
- Herman GE. 2003. Disorders of cholesterol biosynthesis: prototypic metabolic malformation syndromes. *Hum Mol Genet*, 12 (Spec No 1):R75-88.
- Higgins CF, Callaghan R, Linton KJ, Rosenberg MF, Ford RC. 1997. Structure of the multidrug resistance P-glycoprotein. *Semin Cancer Biol*, 8(3): 135-142.
- Hopkins B, Brice AL, Schofield PN, Baralle FE, Graham CF. 1987. Identity of cells containing apolipoprotein B messenger RNA, in 6- to 12-week postfertilization human embryos. *Development* 100(1):83-93.
- Hustin J, Schaaps JP. 1987. Echographic and anatomic studies of the maternotrophoblastic border during the first trimester of pregnancy. *Am J Obstet Gynecol*, 157(1):162-168.
- Ietta F, Bechi N, Romagnoli R, Bhattacharjee J, Realacci M, Di Vito M, Ferretti C, Paulesu L. 2010. 17β-Estradiol modulates the macrophage migration inhibitory factor secretory pathway by regulating ABCA1 expression in human first-trimester placenta. *Am J Physiol Endocrinol Metab*, 298(3):E411-418.

- Juliano RL, Ling V. 1976. A surface glycoprotein modulating drug permeability in Chinese hamster ovary cell mutants. *Biochem Biophys Acta* 455(1): 152-162.
- Kelley RI. 2000. Inborn errors of cholesterol biosynthesis. *Adv Pediatr*, 47:1-53.
- Keppler D, Leier I, Jedlitschky G, König J. 1998. ATP-dependent transport of glutathione S-conjugates by the multidrug resistance protein MRP1 and its apical isoform MRP2. *Chem Biol Interact*, 111-112: 153-161.
- Koseki M, Hirano K, Masuda D, Ikegami C, Tanaka M, Ota A, Sandoval JC, Nakagawa-Toyama Y, Sato SB, Kobayashi T, Shimada Y, Ohno-Iwashita Y, Matsuura F, Shimomura I, Yamashita S. 2007. Increased lipid rafts and accelerated lipopolysaccharide-induced tumor necrosis factor-alpha secretion in Abca1-deficient macrophages. *J Lipid Res*, 48(2):299-306.
- Lanford RE, Bronson DL, Estlack LE, Wians FH Jr. 1991. Plasma protein and apolipoprotein synthesis by human yolk sac carcinoma cells in vitro. *In Vivo Cell Dev Biol* 27A (3 Pt 1):205-210.
- Langmann T, Klucken J, Reil M, Liebisch G, Luciani MF, Chimini G, Kaminski WE, Schmitz G. 1999. Molecular cloning of the human ATP-Binding cassette transporter 1 (hABC1): evidence for sterol-dependent regulation in macrophages. *Biochem Biophys Res Commun* 257(1):29-33.
- Langmann, T, Mauerer R, Zahn A, Moehle C, Probst M, Stremmel W, Schmitz G. 2003. Real-time reverse transcription-PCR expression profiling of the complete human ATP-binding cassette transporter superfamily in various tissues. *Clin Chem*, 49(2): 230-238.
- Lankas GR, Wise LD, Cartwright ME, Pippert T, Umbenhauer DR. 1998. Placental Pglycoprotein deficiency enhances susceptibility to chemically induced birth defects in mice. *Reprod Toxicol*, 12(4): 457-463.
- Lawn RM, Wade DP, Garvin MR, Wang X, Schwartz K, Porter JG, Seilhamer JJ, Vaughan AM, Oram JF. 1999. The Tangier disease gene product ABC1 controls the cellular apolipoprotein-mediated lipid removal pathway. *J Clin Invest*, 104(8): R25-R31.
- Leazer TM, Klaassen CD. 2003. The presence of xenobiotic transporters in rat placenta. *Drug Metab Dispos*, 31(2): 153-167.
- Li Q, Tsujita M, Yokoyama S. 1997. Selective down-regulation by protein kinase C inhibitors of apolipoprotein-mediated cellular cholesterol efflux in macrophages. *Biochemistry*, 36 (40): 12045-12052.
- Lindegaard ML, Wassif CA, Vaisman B, Amar M, Wasmuth EV, Shamburek R, Nielsen LB, Remaley AT, Porter FD. 2008 Characterization of placental cholesterol transport: ABCA1 is a potential target for in utero therapy of Smith-Lemli-Opitz syndrome. *Hum Mol Genet*, 17(23): 3806-3813.
- Litman T, Druley TE, Stein WD, Bates SE. 2001. From MDR to MXR: new understanding of multidrug resistance systems, their properties and clinical significance. *Cell Mol Life Sci*, 58(7): 931-959.
- Litman, T., Jensen U, Hansen A, Covitz KM, Zhan Z, Fetsch P, Abati A, Hansen PR, Horn T, Skovsgaard T, Bates SE. 2002. Use of peptide antibodies to probe for the mitoxantrone resistance-associated protein MXR/BCRP/ABCP/ABCG2. *Biochim Biophys Acta*, 1565(1): 6-16.



- Lue H, Kleemann R, Calandra T, Roger T, Bernhagen J. Macrophage migration inhibitory factor (MIF): mechanisms of action and role in disease. *Microbes Infect*, 4(4): 449-460.
- MacFarland A, Abramovich DR, Ewen SW, Pearson CK. 1994. Stage-specific distribution of P-glycoprotein in first-trimester and full-term human placenta. *Histochem J*, 26(5): 417-423.
- Martì E, Bovolenta P. 2002. Sonic hedgehog in CNS development: one signal, multiple outputs. *Trends Neurosci*, 25 (2):89-96.
- Mathias AA, Hitti J, Unadkat JD. 2005. P-glycoprotein and breast cancer resistance protein expression in human placentae of various gestational ages. *Am J Physiol Regul Integr Comp Physiol*, 289(4): R963-969.
- Matsuo M. 2010. ATP-binding cassette proteins involved in glucose and lipid homeostasis. *Biosci Biotechnol Biochem*, 74(5):899-907.
- McConihay JA, Horn PS, Woollett LA. 2001. Effect of maternal hypercholesterolemia on fetal sterol metabolism in the Golden Syrian hamster. *J Lipid Res*, 42(7):1111-1119.
- McNeish J, Aiello RJ, Guyot D, Turi T, Gabel C, Aldinger C, Hoppe KL, Roach ML, Royer LJ, de Wet J, Broccardo C, Chimini G, Francone OL. 2000. High density lipoprotein deficiency and foam cell accumulation in mice with targeted disruption of ATP-binding cassette transporter-1. *Proc Natl Acad Sci U S A*, 97(8):4245-4250.
- McNeish J, Aiello RJ, Guyot D, Turi T, Gabel C, Aldinger C, Hoppe KL, Roach ML, Royer LJ, de Wet J, Broccardo C, Chimini G, Francone OL. 2000. High density lipoprotein deficiency and foam cell accumulation in mice with targeted disruption of ATP-binding cassette transporter-1. *Proc Natl Acad Sci U S A*, 97(8):4245-4250.
- Mendez AJ, Lin G, Wade DP, Lawn RM, Oram JF. 2001. Membrane lipid domains distinct from cholesterol/sphingomyelin-rich rafts are involved in the ABCA1 mediated lipid secretory pathway. *J Biol Chem*, 276(5): 3158-3166.
- Mitchell RA, Bucala R. 2000. Tumor growth-promoting properties of macrophage migration inhibitory factor (MIF). *Semin Cancer Biol*, 10(5): 359-366.
- Murphy AJ, Woollard KJ, Hoang A, Mukhamedova N, Stirzaker RA, McCormick SP, Remaley AT, Sviridov D, Chin-Dusting J. 2008. High-density lipoprotein reduces the human monocyte inflammatory response. *Arterioscler Thromb. Vasc Biol*, 28 (11):2071-2077.
- Nagashige M, Ushigome F, Koyabu N, Hirata K, Kawabuchi M, Hirakawa T, Satoh S, Tsukimori K, Nakano H, Uchiumi T, Kuwano M, Ohtani H, Sawada Y. 2003. Basal membrane localization of MRP1 in human placental trophoblast. *Placenta*, 24(10): 951-958.
- Napoli C, D'Armiento FP, Mancini FP, Postiglione A, Witztum JL, Palumbo G, Palinski W. 1997. Fatty streak formation occurs in human fetal aortas and is greatly enhanced by maternal hypercholesterolemia. Intimal accumulation of low density lipoprotein and its oxidation precede monocyte recruitment into early atherosclerotic lesions. *J Clin Invest*, 100(11):2680-2690.
- Neufeld EB, Stonik JA, Demosky SJ Jr, Knapper CL, Combs CA, Cooney A, Comly M, Dwyer N, Blanchette-Mackie J, Remaley AT, Santamarina-Fojo S, Brewer HB Jr. 2001. The ABCA1 transporter modulates late endocytic trafficking: insight from the correction of the genetic defect in Tangier disease. *J Biol Chem*, 279(15): 27584-27590.

- Oram J F. 2003. HDL apolipoproteins and ABCA1: partners in the removal of excess cellular cholesterol. *Arterioscler Thromb Vasc Biol*, 23(5): 720-727.
- Oram J F. 2002. ATP-binding cassette transporters A1 and cholesterol trafficking. *Curr Opin Lipidol*, 13(4): 373-381.
- Oram JF, Lawn RM, Garvin MR, Wade DP. 2000. ABCA1 is the cAMP-inducible apolipoprotein receptor that mediates cholesterol secretion from macrophages. *J Biol Chem*, 275(44): 34508-34511.
- Oram JF, Mendez AJ, Slotte JP, Johnson TF. 1991. High density lipoprotein apolipoproteins mediate removal of sterol from intracellular pools but not from plasma membranes of cholesterol-loaded fibroblasts. *Atheroscler Thromb*, 11(2): 403-414.
- Oram JF, Vaughan AM, Stocker R. 2001. ATP-binding cassette transporter A1 mediates cellular secretion of alpha-tocopherol. *J Biol Chem* 2001;276(43): 39898-39902.
- Ozvegy C, Litman T, Szakács G, Nagy Z, Bates S, Váradi A, Sarkadi B. 2001. Functional characterization of the human multidrug transporter, ABCG2, expressed in insect cells. *Biochem Biophys Res Commun*, 285(1): 111-117.
- Palinski W, Napoli C. 2002. The fetal origins of atherosclerosis: maternal hypercholesterolemia, and cholesterol-lowering or antioxidant treatment during pregnancy influence in utero programming and postnatal susceptibility to atherogenesis. *FASEB J*, 16(11): 1348-1360.
- Pascolo L, Ferneti C, Pirulli D, Crovella S, Amoroso A, Tiribelli C. 2003. Effects of maturation on RNA transcription and protein expression of four MRP genes in human placenta and in BeWo cells. *Biochem Biophys Res Commun*, 303(1): 259-265.
- Perda J, Correr S, Motta PM. 1994. The structure of the human yolk sac: a scanning and transmission electron microscopic analysis. *Arch Histol Cytol* 57(2):107-117
- Porter JA, Young KE, Beachy PA. 1996. Cholesterol modification of hedgehog signaling proteins in animal development. *Science*, 274 (5285):255-259.
- Rothblat GH, de la Llera-Moya M, Atger V, Kellner-Weibel G, Williams DL, Phillips MC. 1999. Cell cholesterol efflux: integration of old and new observations provides new insights. *J Lipid Res* 40(5):781-796.
- Rust S, Rosier M, Funke H, Real J, Amoura Z, Piette JC, Deleuze JF, Brewer HB, Duverger N, Denèfle P, Assmann G. 1999. Tangier disease is caused by mutations in the gene encoding ATP-binding cassette transporter 1. *Nat Genet*, 22(4):352-355.
- Samtani MN, Schwab M, Nathanielsz PW, Jusko WJ. 2004. Area/moment and compartmental modeling of pharmacokinetics during pregnancy: applications to maternal/fetal exposures to corticosteroids in sheep and rats. *Pharm Res*, 21(12): 2279-2292.
- Santamarina-Fojo S, Remaley AT, Neufeld EB, Brewer HB Jr. 2001. Regulation and intracellular trafficking of the ABCA1 transporter. *J Lipid Res*, 42(9): 1339-1345.
- Sarkadi B, Ozvegy-Laczka C, Németh K, Váradi A. 2004. ABCG2 -- a transporter for all seasons. *FEBS Lett*, 2004; 567(1): 116-120.
- Sato K, Sugawara J, Sato T, Mizutamari H, Suzuki T, Ito A, Mikkaichi T, Onogawa T, Tanemoto M, Unno M, Abe T, Okamura K. 2003. Expression of organic anion transporting polypeptide E (OATP-E) in human placenta. *Placenta*, 24(2-3): 144-148.

- Schmid KE, Davidson WS, Myatt L, Woollett LA. 2003. Transport of cholesterol across a BeWo cell monolayer: implications for net transport of sterol from maternal to fetal circulation. *J Lipid Res*, 44(10):1909-1918.
- Schmitz G, Grandl M. 2008. Lipid homeostasis in macrophages - implications for atherosclerosis. *Rev Physiol Biochem Pharmacol*, 160:93-125.
- Schmitz G, Kaminski WE, Porsch-Ozcürümez M, Klucken J, Orsó E, Bodzioch M, Büchler C, Drobnik W. 1999. ATP-binding cassette transporter A1 (ABCA1) in macrophages: a dual function in inflammation and lipid metabolism? *Pathobiology*, 67(5-6):236-240.
- Shi W-K, Hopkins B, Thompson S, Heath JK, Luke BM, Graham CF. 1985. Synthesis of apolipoproteins, alphafoetoprotein, albumin, and transferrin by the human foetal yolk sack and other foetal organs. *J Embryol Exp Morphol* 85:191-206.
- Shi W-K, Hopkins B, Thompson S, Heath JK, Luke BM, Graham CF. 1985. Synthesis of apolipoproteins, alphafoetoprotein, albumin, and transferrin by the human foetal yolk sack and other foetal organs. *J. Embryol. Exp. Morphol.* 85:191-206
- Smit JW, Huisman MT, van Tellingen O, Wiltshire HR, Schinkel AH. 1999. Absence or pharmacological blocking of placental P-glycoprotein profoundly increases fetal drug exposure. *J Clin Invest*, 104(10): 1441 -1447.
- Smith JD, Waelde C, Horwitz A, Zheng P. 2002. Evaluation of the role of phosphatidylserine translocase activity in ABCA1-mediated lipid efflux. *J Biol Chem*, 277(20): 17797-17803.
- Stefulj J, Panzenboeck U, Becker T, Hirschmugl B, Schweinzer C, Lang I, Marsche G, Sadjak A, Lang U, Desoye G, Wadsack C . 2009. Human endothelial cells of the placental barrier efficiently deliver cholesterol to the fetal circulation via ABCA1 and ABCG1. *Circ Res*, 104(5): 600-608.
- St-Pierre MV, Hagenbuch B, Ugele B, Meier PJ, Stallmach T. 2002. Characterization of an organic anion-transporting polypeptide (OATP-B) in human placenta. *J Clin Endocrinol Metab*, 87(4): 1856-1863.
- Takahashi Y, Smith J D. 1996. Cholesterol efflux to apolipoprotein AI involves endocytosis and resecreation in a calcium-dependent pathway. *Proc Natl Acad Sci USA*, 96(20): 11358-11363.
- Takahashi Y, Smith J D. 1999. Cholesterol efflux to apolipoprotein AI involves endocytosis and resecreation in a calcium-dependent pathway. *Proc Natl Acad Sci USA*, 96(20): 11358-11363.
- Tall AR. 2008. Cholesterol efflux pathways and other potential mechanisms involved in the athero-protective effect of high density lipoproteins. *J Intern Med*, 263(3): 256-273.
- Tanabe M, Ieiri I, Nagata N, Inoue K, Ito S, Kanamori Y, Takahashi M, Kurata Y, Kigawa J, Higuchi S, Terakawa N, Otsubo K. 2001. Expression of P-glycoprotein in human placenta: relation to genetic polymorphism of the multidrug resistance (MDR)-1 gene. *J Pharmacol Exp Ther*, 297(3): 1137-1143.
- Tanc C, Liu Y, Kessler PS, Vaughan AM, Oram JF. The macrophage cholesterol exporter ABCA1 functions as an anti-inflammatory receptor. *J Biol Chem*, 284: 32336-43.
- Tellier E, Canault M, Poggi M, Bonardo B, Nicolay A, Alessi MC, Nalbhone G, Peiretti F. 2008. HDLs activate ADAM17-dependent shedding. *J Cel Physiol*, 214 (3):687-693.

- Ushigome F, Takanaga H, Matsuo H, Yanai S, Tsukimori K, Nakano H, Uchiumi T, Nakamura T, Kuwano M, Ohtani H, Sawada Y. 2000. Human placental transport of vinblastine, vincristine, digoxin and progesterone: contribution of Pglycoprotein. *Eur J Pharmacol*, 408(1): 1-10.
- Vaughan A M, Oram J F. 2003. ABCA1 redistributes membrane cholesterol independent of apolipoprotein interactions. *J Lipid Res* 2003; 44(7): 1373-1380.
- Von Eckardstein A, Langer C, Engel T, Schaukal I, Cignarella A, Reinhardt J, Lorkowski S, Li Z, Zhou X, Cullen P, Assmann G. 2001. ATP binding cassette transporter ABCA1 modulates the secretion of apolipoprotein E from human monocyte-derived macrophages. *FASEB J* 2001; 15(9): 1555-1561.
- Wadsack C, Hammer A, Levak-Frank S, Desoye G, Kozarsky KF, Hirschmugl B, Sattler W, Malle E. 2003. Selective cholesterol ester uptake from high density lipoprotein by human first trimester and villous trophoblast cells. *Placenta*, 24 (2-3):131-143.
- Wang N, Silver DL, Costet P, Tall AR. 2000. Specific binding of ApoA-I, enhanced cholesterol efflux, and altered plasma membrane morphology in cells expressing ABCA1. *J Biol Chem*, 275(42): 33053-33058.
- Wang N, Silver DL, Thiele C, Tall AR. 2001. ATP-binding cassette transporter A1 (ABCA1) functions as a cholesterol efflux regulatory protein. *J Biol Chem*, 276(26): 23742-23747.
- Woollett LA. 2001. The origins and roles of cholesterol and fatty acids in the fetus. *Curr Opin Lipidol*, 2001;12(3): 305-312.
- Woollett LA. 2005. Maternal cholesterol in fetal development: transport of cholesterol from the maternal to the fetal circulation. *Am J Clin Nutr* 82(6):1155-1161.
- Woollett LA. 2008. Where does fetal and embryonic cholesterol originate and what does it do? *Annu Rev Nutr*, 28:97-114.
- Wyne KL, Woollett LA. 1998. Transport of maternal LDL and HDL to the fetal membranes and placenta of the Golden Syrian hamster is mediated by receptor-dependent and receptor-independent processes. *J Lipid Res*, 39 (3):518-530.
- Yancey PG, Bortnick AE, Kellner-Weibel G, de la Llera-Moya M, Phillips MC, Rothblat GH. 2003. Importance of different pathways of cellular cholesterol efflux. *Arterioscler Thromb Vasc Biol* 23(5):712-719.
- Yoshida S, Wada Y. 2005. Transfer of maternal cholesterol to embryo and fetus in pregnant mice. *J Lipid Res*, 46 (10):2168-2174.
- Young AM, Allen CE, Audus KL. 2003. Efflux transporters of the human placenta. *Adv Drug Deliv Rev*, 55(1):125-132.
- Yvan-Charvet L, Pagler T, Gautier EL, Avagyan S, Siry RL, Han S, Welch CL, Wang N, Randolph GJ, Snoeck HW, Tall AR. 2010. ATP-binding cassette transporters and HDL suppress hematopoietic stem cell proliferation. *Science*, 328(5986):1689-1693.
- Yvan-Charvet L, Wang N, Tall AR. 2010. Role of HDL, ABCA1, and ABCG1 transporters in cholesterol efflux and immune responses. *Atheroscler Thromb Vasc Biol*, 30(2): 139-143.
- Yvan-Charvet L, Welch C, Pagler TA, Ranalletta M, Lamkanfi M, Han S, Ishibashi M, Li R, Wang N, Tall AR. 2008. Increased inflammatory gene expression in ABC transporter-deficient macrophages: free cholesterol accumulation, increased

- signaling via toll-like receptors, and neutrophil infiltration of atherosclerotic lesions. *Circulation*, 118(18):1837-1847.
- Zhou X, Engel T, Goepfert C, Erren M, Assmann G, von Eckardstein A. 2002. The ATP-binding cassette transporter A1 contributes to the secretion of interleukin 1beta from macrophages but not from monocytes. *Biochem Biophys Res Commun*, 291(3): 598-604.
- Zhu X, Lee JY, Timmins JM, Brown JM, Boudyguina E, Mulya A, Gebre AK, Willingham MC, Hiltbold EM, Mishra N, Maeda N, Parks JS. 2008. Increased cellular free cholesterol in macrophage-specific Abca1 knock-out mice enhances proinflammatory response of macrophages. *J Biol Chem*, 283(34):22930-22941.

IntechOpen



## **Recent Advances in Research on the Human Placenta**

Edited by Dr. Jing Zheng

ISBN 978-953-51-0194-9

Hard cover, 428 pages

**Publisher** InTech

**Published online** 07, March, 2012

**Published in print edition** March, 2012

This book contains the total of 19 chapters, each of which is written by one or several experts in the corresponding field. The objective of this book is to provide a comprehensive and most updated overview of the human placenta, including current advances and future directions in the early detection, recognition, and management of placental abnormalities as well as the most common placental structure and functions, abnormalities, toxicology, infections, and pathologies. It also includes a highly controversial topic, therapeutic applications of the human placenta. A collection of articles presented by active investigators provides a clear update in the area of placental research for medical students, nurse practitioners, practicing clinicians, and biomedical researchers in the fields of obstetrics, pediatrics, family practice, genetics, and others who may be interested in human placentas.

### **How to reference**

In order to correctly reference this scholarly work, feel free to copy and paste the following:

Jayonta Bhattacharjee, Francesca Ietta, Roberta Romagnoli, Nicoletta Bechi, Isabella Caniggia and Luana Paulesu (2012). ABC Transporters in Human Placenta and Their Role in Maternal-Fetal Cholesterol Transfer: ABCA1 Candidate Target, *Recent Advances in Research on the Human Placenta*, Dr. Jing Zheng (Ed.), ISBN: 978-953-51-0194-9, InTech, Available from: <http://www.intechopen.com/books/recent-advances-in-research-on-the-human-placenta/abc-transporters-in-human-placenta-and-their-role-in-maternal-fetal-cholesterol-transfer-abca1-candi>

**INTECH**  
open science | open minds

### **InTech Europe**

University Campus STeP Ri  
Slavka Krautzeka 83/A  
51000 Rijeka, Croatia  
Phone: +385 (51) 770 447  
Fax: +385 (51) 686 166  
[www.intechopen.com](http://www.intechopen.com)

### **InTech China**

Unit 405, Office Block, Hotel Equatorial Shanghai  
No.65, Yan An Road (West), Shanghai, 200040, China  
中国上海市延安西路65号上海国际贵都大饭店办公楼405单元  
Phone: +86-21-62489820  
Fax: +86-21-62489821

© 2012 The Author(s). Licensee IntechOpen. This is an open access article distributed under the terms of the [Creative Commons Attribution 3.0 License](#), which permits unrestricted use, distribution, and reproduction in any medium, provided the original work is properly cited.

IntechOpen

IntechOpen