

We are IntechOpen, the world's leading publisher of Open Access books Built by scientists, for scientists

4,800

Open access books available

122,000

International authors and editors

135M

Downloads

Our authors are among the

154

Countries delivered to

TOP 1%

most cited scientists

12.2%

Contributors from top 500 universities



WEB OF SCIENCE™

Selection of our books indexed in the Book Citation Index
in Web of Science™ Core Collection (BKCI)

Interested in publishing with us?
Contact book.department@intechopen.com

Numbers displayed above are based on latest data collected.

For more information visit www.intechopen.com



HIV-1 Selectively Integrates Into Host DNA *In Vitro*

Tatsuaki Tsuruyama

*Department of Molecular Pathology, Graduate School of Medicine, Kyoto University
Kyoto, Kyoto Prefecture
Japan*

1. Introduction

1.1 Summary

The biochemistry of retroviral integration selectivity is not fully understood. We modified the previously reported *in vitro* integration reaction protocol and developed a novel reaction system with higher efficiency. We used a DNA target composed of a repeat sequence DNA, 5'-(GTCCCTTCCCAGT)₆(ACTGGGAAGGGAC)₆-3', that was ligated into a circular plasmid. Target DNA was reacted with a pre-integration (PI) complex that was formed by incubation of the end cDNA of the HIV-1 genome and recombinant integrase. It was confirmed that integration selectively occurred in the middle segment of the repeat sequence. On the other hand, both frequency and selectivity of integration markedly decreased when target sequences were used in which CAGT bases in the middle position of the original target sequence were deleted. Moreover, upon incubation with a combination of these deleted DNAs and the original sequence, the integration efficiency and selectivity towards the original target sequence were significantly reduced, which indicated interference effects by the deleted sequence DNAs. Efficiency and selectivity were also found to vary with changes in the manganese dichloride concentration of the reaction buffer, probably due to induction of fluctuation in the secondary structure of the substrate DNA. Such fluctuation may generate structural isomers that are favorable for selective integration into the target sequence DNA. In conclusion, there is considerable selectivity in HIV-integration into the specified target sequence. The present *in vitro* integration system will therefore be useful for monitoring viral integration activity or for testing of integrase inhibitors.

1.2 Background

Retroviral integration into host DNA is a critical step in the viral life cycle. Once integrated, the proviral genome will be stably duplicated along with the host cellular DNA duplication and will be transmitted to the daughter cells. Retroviruses can thus serve as powerful tools for the integration of foreign genes into a host genome (Fig. 1), and an MLV vector can be used to examine the function of introduced genes and the development of induced pluripotent stem (iPS) cells [1]. However, integrated retroviral genomes also have the potential to cause unexpected transformation through up-regulation of target genes by retroviral promoter elements located at the long terminal repeat (LTR) following integration [2]. Although

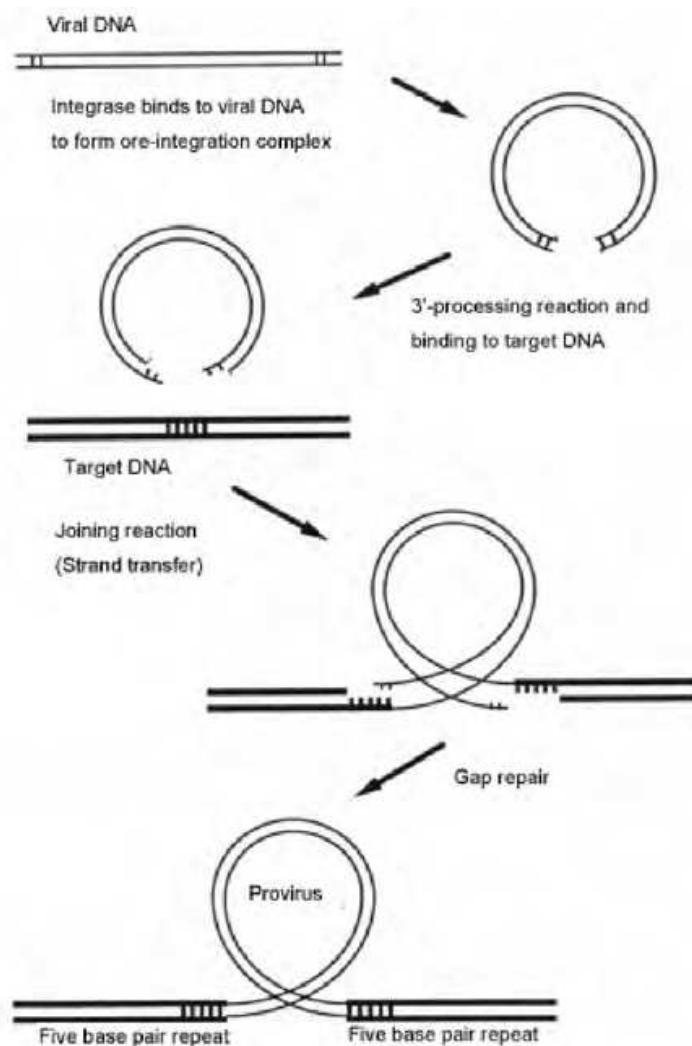


Fig. 1. Scheme of viral integration into target DNA: 3'-processing, join reaction, and gap repair. After the HIV-1 RNA genome has been transcribed into double-stranded DNA, the viral protein integrase binds to the termini of the viral DNA ends in a tetrameric fashion and the integrase creates overlapping 5'-ends by removing two nucleotides from the 3'-ends (3' end-processing). The HIV-1 DNA and the host cell DNA are ligated by synthesis of phosphodiester bonds between the terminal nucleotides of the viral 3'-ends and overlapping 5'-ends of the host chromosome. The non-homologous 5'-ends from the viral DNA are removed by integrase. Finally, the gaps are filled up by host cellular repair proteins, which recognize single strand breaks. A five base-repeat is observed in the flanking sequence after the gap repair reaction.

integration events have long been considered to be random, several recent findings have shown that integration of the murine leukemia retrovirus (MLV) and of HIV-1 is detected more frequently in actively transcribed genes [3, 4] or in promoter regions [5]. Previous statistical studies have also demonstrated that weak palindromic sequences are a common feature of the sites targeted for retroviral integration [6, 7]. Similar target preferences have also been reported for human T cell leukemia retrovirus type I (HTLV-I) integration sites [8]. Because of these findings, we investigated the biophysical mechanisms underlying *in vitro* integration. In the present study, we aimed to establish an *in vitro* integration assay using

retroviral cDNA and integrase. Yoshinaga et al. previously reported the development of an *in vitro* integration assay using recombinant HIV-1 integrase, and short viral and target DNA sequences [9]. Using this method, they successfully detected retroviral cDNA-target DNA complexes *in vitro* and reported that the dinucleotide motif 5'-CA that is located at the proviral genome termini was essential for HIV-1 integration. Yoshinaga et al. called these dinucleotides the integration signal sequence. We modified Yoshinaga's method of *in vitro* integration in order to identify the precise HIV-1 integration sites using a target DNA that corresponds to an actual gene sequence.

In our previous study, we identified a common MLV integration site within the *signal transducer and activators of transcription 5a* (*Stat5a*) gene in MLV-induced spontaneous murine lymphoma in an inbred strain of mice, SL/Kh [10]. This is the first report of MLV integration target sequence. It has also been previously demonstrated that the *Stat5a* gene represents one of the common integration sites of MLV (the Mouse Retrovirus Tagged Cancer Gene Database (MRTCGD) (http://rtcgd.ncifcrf.gov/cgi-bin/mm7/easy_search.cgi) [11]. The encoded STAT5A protein is a transcription factor that is known to play an essential role in the development of myelo- and lympho-proliferative disease [12, 13]. In the current study, we modified this *Stat5a* gene sequence for use as a target for HIV-1 integration *in vitro*. This target gene consists of a 5'-CA-rich sequence, which may provide a useful clue for preparation of target DNA sequences, because terminal CA dinucleotide motifs are shared by MLV and HIV-1, as well as by HTLV-I proviruses.

2. *In vitro* integration assay used in previous studies

In many previous *in vitro* integration protocols, the double stranded DNA of the HIV-1 3'-LTR proviral end alone and the substrate DNA are mixed in an appropriate buffer containing $MnCl_2$ [14] (Fig. 2, 3). Subsequently, a PCR reaction using a primer set targeted to the proviral

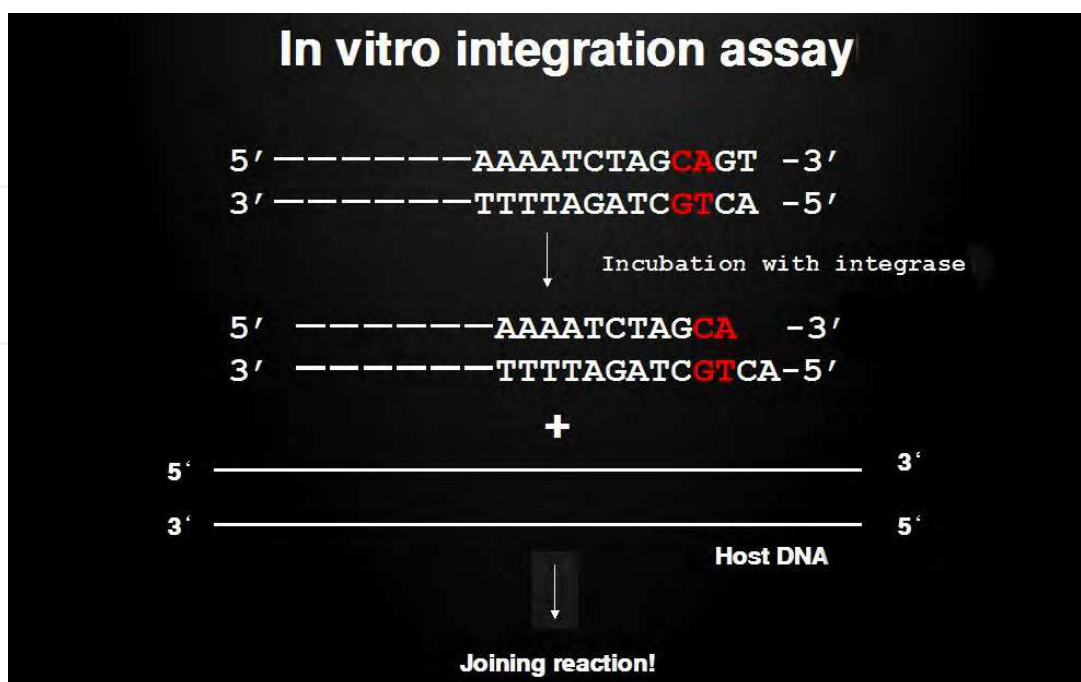


Fig. 2. Scheme of the previously described incubation with recombinant integrase

DNA and the target DNA amplifies a DNA segment that includes the viral-host DNA junction. In some protocols, even the viral DNA itself is used as the target DNA. Thus, previous studies paid little attention to the target sequence. It is commonly known that integrase binds to the proviral DNA in a regular tetrameric fashion. Indeed, some sequence motifs should be favored by an integrase oligomer, because a dimeric transcriptional factor protein has the ability to bind to palindromic sequence motifs such as E-box and GAS elements.

The 3' end of the HIV-1 LTR sequence is shown. Red letters indicate the conserved dinucleotide motif. Incubation of the 3' end of the HIV-1 LTR sequence DNA with integrase results in processing of the end of the 5'-GT dinucleotide. The resulting exposed hydroxyl group then attacks the target DNA.

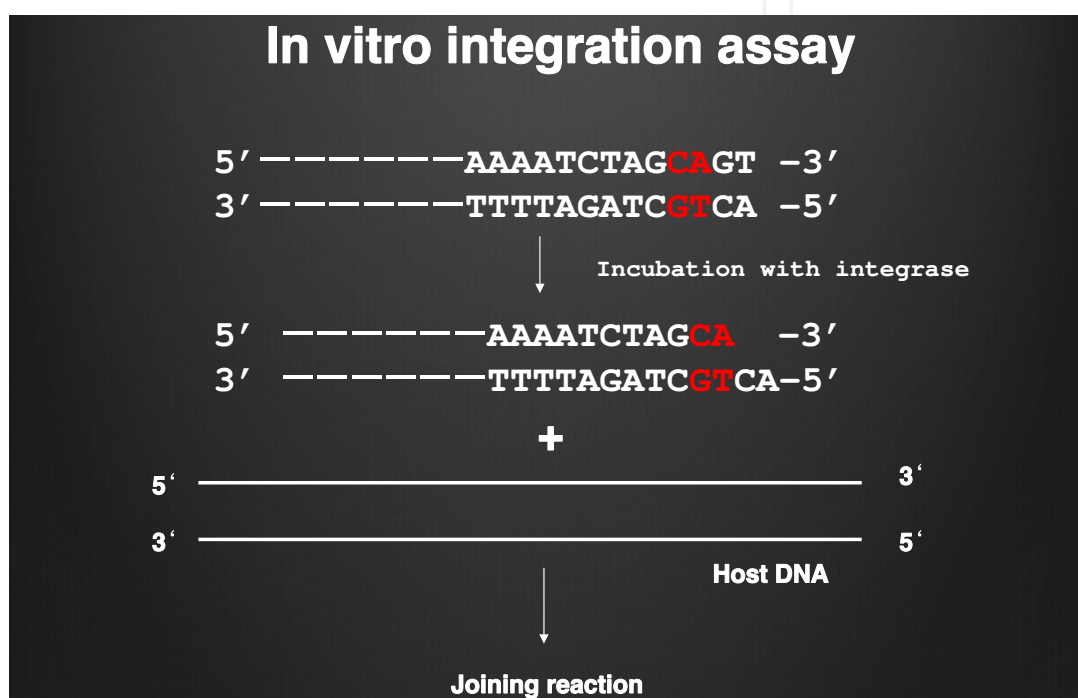


Fig. 3. Protocol of the previously described *in vitro* integration assay

A nick is introduced into the host DNA that is attached to a CA dinucleotide in the HIV-1 DNA end. Red letters indicate the conserved dinucleotide motif. Arrows indicate the PCR primer set and the direction of DNA polymerization.

2.1 Preparation of target sequences for *in vitro* integration

We recently reported the target sequence of MLV integration. We developed an inbred strain of mice suffering from spontaneous B cell lymphoma by MLV integration. MLV integration into *Stat5a* was identified in 25% of the lymphoma genome [15, 16] (Fig. 4). As depicted in Fig. 4, the hot spot of integration included a 5'-CA-rich sequence as well as a palindromic motif. Downward facing arrows in the figure indicated the MLV integration sites. The abundance of 5'-CA dinucleotides in the integration hot spots provided us with a hint for the preparation of target DNA for HIV integration, because these motifs are shared by the genome ends of MLV and HIV-1 (Fig. 5). We hypothesized that HIV-1 DNA also favors such a 5'-CA-rich sequence motif.

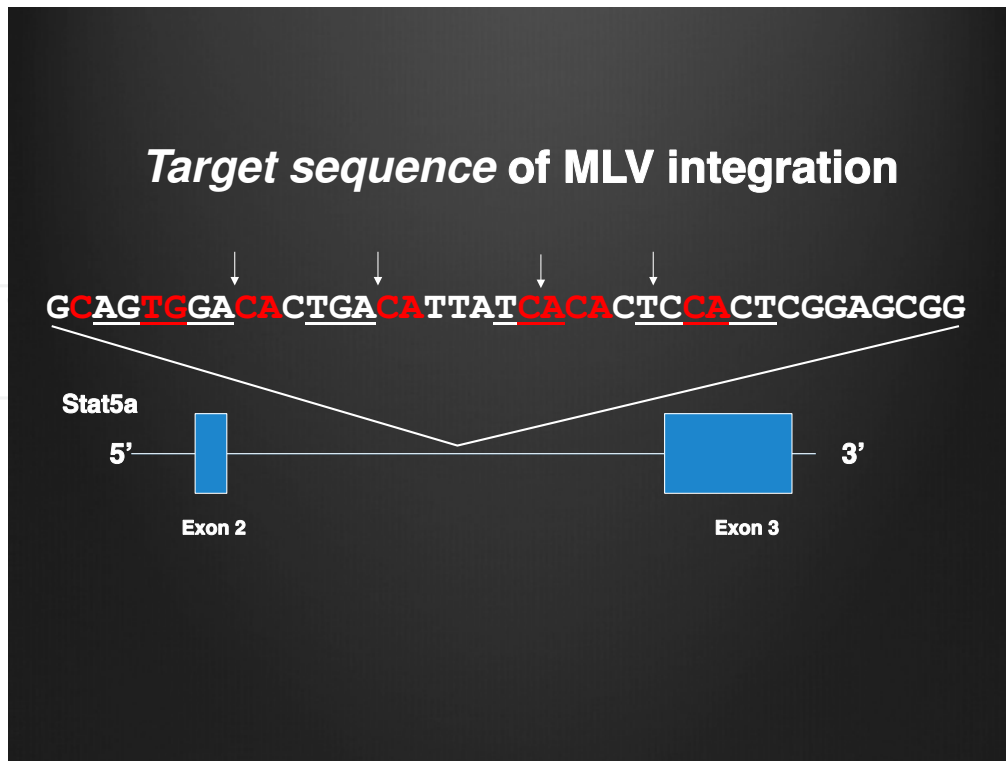


Fig. 4. Target sequence of MLV integration within the *Stat5a* gene.

Downward-facing arrows indicate the MLV integration sites (15, 16). Red letters highlight the CA-rich sequence. Blue boxes represent exons of the *Stat5a* gene. Underlines indicates the palindromic motif.

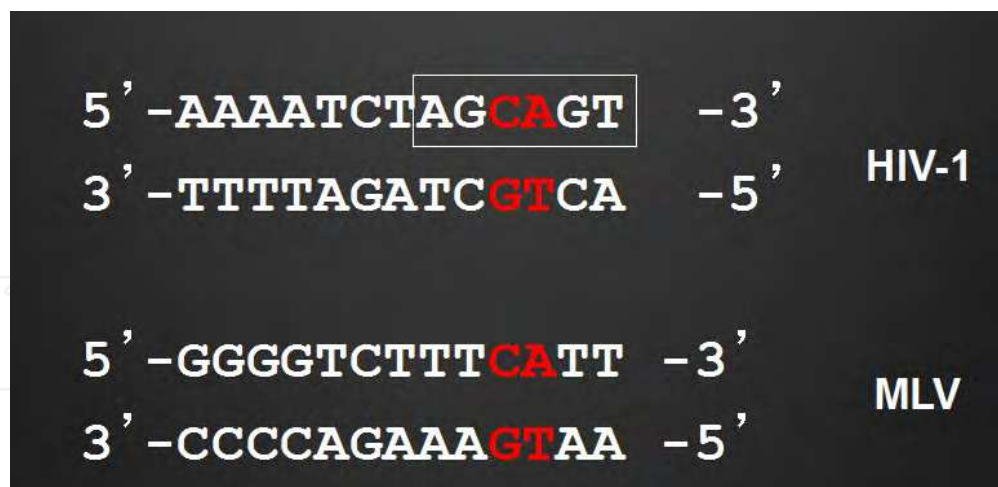


Fig. 5. Conserved 5'-CA dinucleotide in the proviral ends of HIV-1 and MLV.

A box indicate the integration signal sequence reported by Yoshinaga et al (9).

2.2 Modified *In vitro* integration assay

We then prepared a target sequence for HIV-1 integration. A repeat sequence was prepared in order to enhance integration efficiency. We used the repeat sequence, 5'-

(GTCCCTTCCCAGT)₆(ACTGGGAAGGGAC)₆-3', or a modification of this sequence, which was ligated into a circular plasmid. The sequence within parenthesis is the unit of the repeat. This target sequence includes the 5'-CA dinucleotide motif, and includes 5'-AC at the HIV-1 DNA termini (Fig. 5). 5'-CAGT and 5'-ACTG (shown in *italics* in the above sequence) in the repeat units are also present in the HIV-1 proviral genome ends. This target DNA was reacted with recombinant integrase and formed a pre-integration (PI) complex. Figures 6 and 7 show our scheme of *in vitro* integration as well as the sequences of the HIV-1 proviral 5'- and 3'-ends. Following incubation of the proviral LTR sequence DNAs with recombinant integrase, the resultant pre-integration complexes were reacted with the target DNA. PCR amplification was performed and the integration sites were analyzed by direct sequencing. Unlike previously reported protocols, we used both 5'- and 3'-LTR sequences in our protocol. Such a target sequence unit was expected to directly interact with complementary HIV-1 DNA end sequences present in the target DNA. Complementarity between HIV-1 DNA and host DNA is shown in Fig. 8.

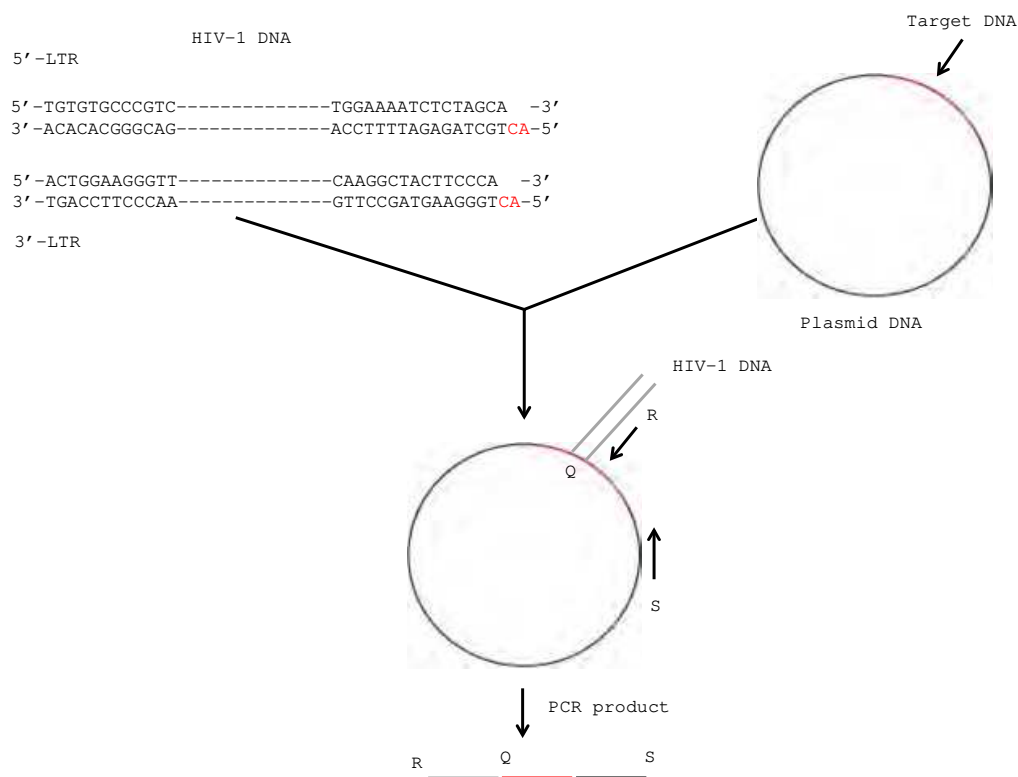


Fig. 6. Scheme of *in vitro* viral integration into the target sequence.

The red segment in the target sequence DNA that includes a circular plasmid represents the 144-bp target DNA, and the black line represents the remainder of the circular plasmid DNA used for ligation. Following incubation of the proviral LTR sequence DNAs with integrase, the resultant pre-integration complexes were reacted with the substrate DNA. Red letters in the HIV-1 cDNA represent the LTR termini. PCR amplification was performed using primers corresponding to regions in the proviral ends and a plasmid region. The integration sites were analyzed by direct sequencing. "Q" in the PCR product indicates the junction between the provirus and the target DNA and R&S represents the 3'-ends of the primer within the HIV-1 DNA and the plasmid DNA, respectively [14].

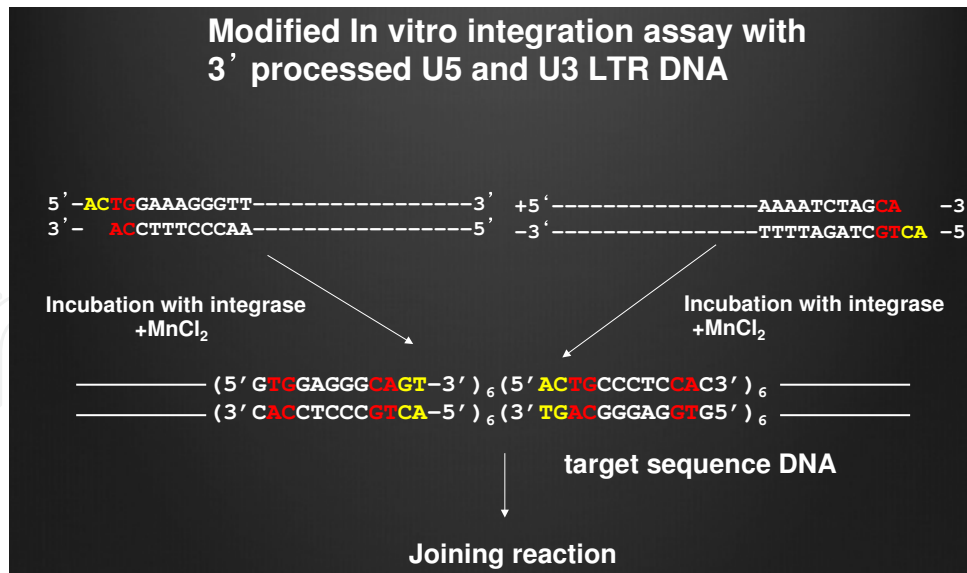


Fig. 7. Target sequence for integration.

The top sequences show the termini of the HIV-1 provirus. The bottom sequence indicates the target sequence and highlights the dinucleotide motif CA/TG (red), and the AC bases (yellow) that are also present at the HIV-1 DNA termini. We prepared a repeat sequence in order to enhance integration efficiency. The sequence shown in parenthesis is the unit of the repeat. Our protocol differs from previous protocols in that we used both 5'- and 3'-LTR sequences rather than a single 3'-LTR DNA.

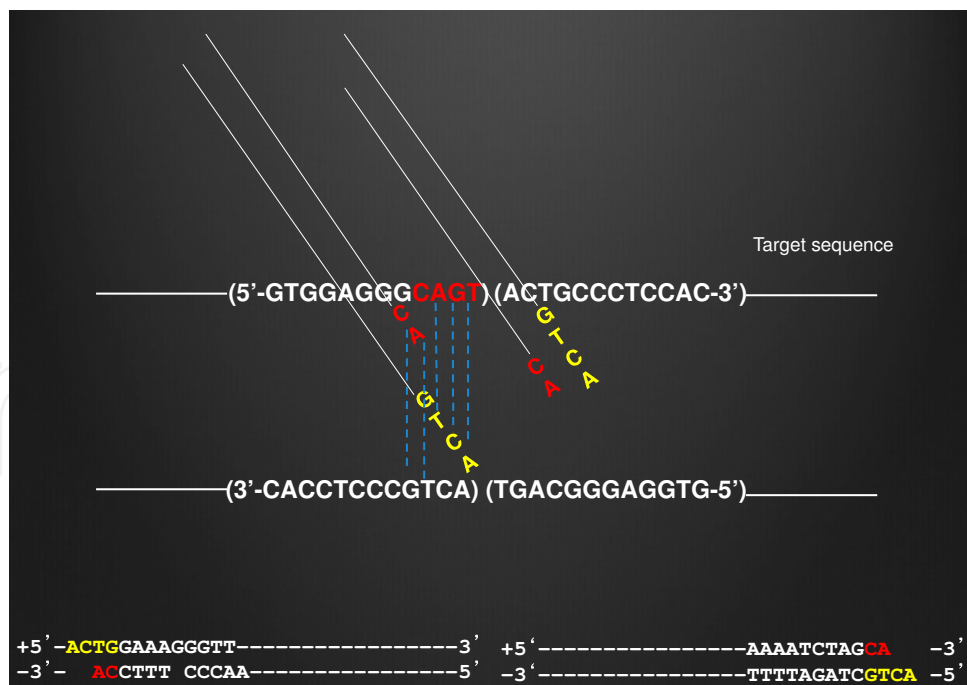


Fig. 8. Integration scheme.

The repeat sequence unit in the target sequence was expected to directly interact with HIV-1 DNA. The dotted lines indicate complementarity between target and viral DNA. The dsDNA sequence at the bottom indicates the 5'- and 3'-ends of the proviral HIV-1 DNA.

2.3 Reaction protocol

The detailed reaction protocol that we used is as follows. First, 75 ng of the U5'-LTR cDNA sequence of HIV-1.; (+) 5'-TGT GTG CCC GTC TGT TGT GTG ACT CTG GTA ACT AGA GAT CCT CAG ACC TTT TTG GTA GTG TGG AAA ATC TCT AGC A-3' and (-) 5'-ACT GCT AGA GAT TTT CCA CAC TAC CAA AAA GGG TCT GAG GGA TCT CTA GTT ACC AGA GTC ACA CAA CAG ACG GGC ACA CA-3', was incubated with 50 ng recombinant HIV-1 integrase in 10 µl of binding buffer for 1 h at 30°C. The binding buffer consisted of 1-0.1 mM MnCl₂, 80 mM glutamate potassium glutamate, 10 mM mercaptoethanol, 10% DMSO, and 35 mM MOPS (pH 7.2).

Similarly, the 3'-LTR cDNA sequence (75 ng) of HIV-1.; (+) 5'-ACT GGA AGG GTT AAT TTA CTC CAA GCA AAG GCA AGA TAT CC TTG ATT TGT GGG TCT ATA ACA CAC AAG GCT ACT TCC CA-3' and (-) 5'-ACTG GGA AGT AGC CTT GTG TGT TAT AGA CCC ACA AAT CAA GGA TAT CTT GCC TTT GCT TGG AGT AAA TTA ACC CTT CCAGT-3', was incubated with the recombinant retroviral integrase. After incubation, the double-stranded (ds) 5'-LTR DNA was combined with the ds 3'-LTR DNA for 1 h at 30 °C, and the LTR DNA was then further incubated with the target DNA for 1 h at 30°C. As controls, ds 5'-LTR DNA and ds 3'-LTR DNA were also individually incubated with the target DNA. For control target DNAs we synthesized four random 144-bp sequences, which were designed by a random number generator, and we ligated these sequences into circular DNA in the same manner as described below for the target DNA

In order to prevent non-specific reactions at the target DNA sequence, we ligated the target sequence DNA into circular plasmid DNA (Invitrogen pCR2.1 TOPO vector) and used this entire DNA as the target DNA for the assay (Fig. 6). The proportion of LTRs and target DNAs was optimized to prevent both non-specific reactions and integration due to an excess of LTRs. The DNA reacted in the buffer was purified using a QIA quick column (QIAGEN, GmbH, Germany). PCR amplification was then performed using retroviral primers: the HIV-1 U5'-LTR primer, 5'-GTG TGC CCG TCT GTT GTG TGA CTCTGG-3', or the HIV-1 U3'-LTR primer, 5'-CTG GGA AGT AGC CTT GTG TGT TAT AG-3', and a TOPO vector primer 5'-TCA CTC ATG GTT ATG GCA GC -3' whose first nucleotide corresponds to nucleotide position 2222 in the TOPO-pCR2.1 plasmid (Invitrogen, Carlsberg, CA). Amplicon copy number was quantified following identification of the HIV-1-substrate DNA junction [14].

3. Results

3.1 Selective viral DNA integration into the target sequence

Figures 9 and 10 show the percentage of viral DNA integration into the target sequence or into the same length random sequences. Four types of the same length random sequences were used as controls. The horizontal blue line shows the percentage integration when uniform integration into the substrate DNA, including into the target DNA plus the circular plasmid, was thought to occur. These data indicate that the percentage of integration into the target sequence was significantly higher than that into random sequences. Also, when a target sequence was used in which the middle 5'-CA and 5'-GT nucleotides were deleted, the integration efficiency was significantly decreased. Thus, local nucleotide motifs within the target sequence affect integration efficiency.

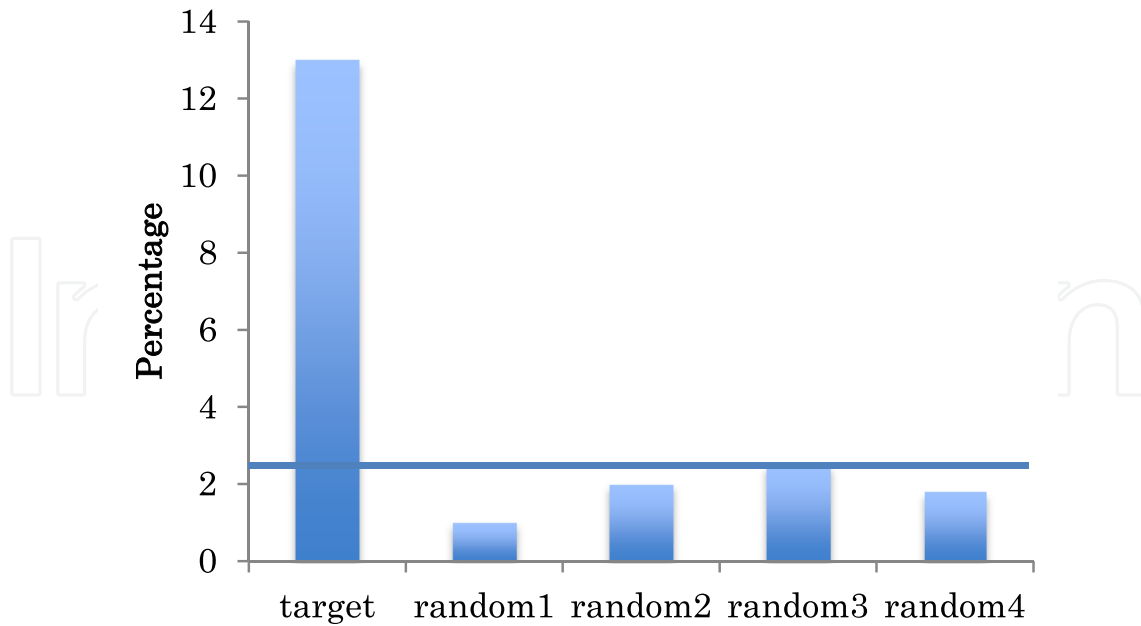


Fig. 9. Integration into target sequence DNA vs. random sequence DNAs.

The percentage of PCR product copies derived from viral DNA that had integrated into the target sequence or into random sequences is plotted vs. the total number of PCR product copies, including the PCR products that were integrated into the remainder of the DNA sequence of the plasmid. The horizontal line shows the ratio of these PCR products when integration was thought to occur in a uniform manner in the 4-kb substrate DNA.

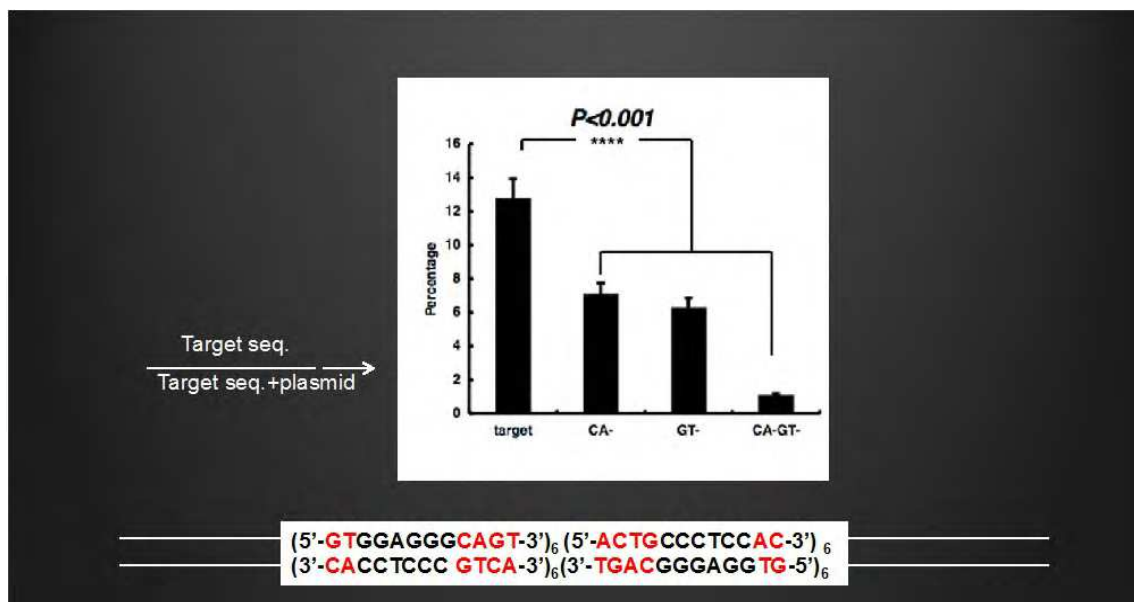


Fig. 10. A graph of the percentage integration into the target sequence or into random sequences.

The left arrows represents the percentage (~2.3%) of integration into target DNA to integration into control when integration was thought to occur in a uniform manner in the substrate DNA, the target sequence DNA plus the circular plasmid with which it was

ligated. The integration efficiency was significantly decreased when CA and GT were removed from the middle region of the repeat. Thus, local nucleotide motifs affect integration efficiency ($****P < 0.001$).

3.2 *In vitro* integration site in the target repeat sequence DNA

Figure 11 shows the *in vitro* integration site in the target repeat sequence DNA. The entire target sequence is shown in this figure. The vertical axis indicates the percentage of PCR amplicons derived from the integration of individual LTR units. Integration efficiency was significantly higher when both the 5'- and the 3'-LTR DNA were used than when either LTR DNA was used alone. The use of both 5'- and 3'-LTR DNA is one of the unique points of our protocol, since previous protocols used a single 3'-LTR DNA (Figs. 7 and 11).

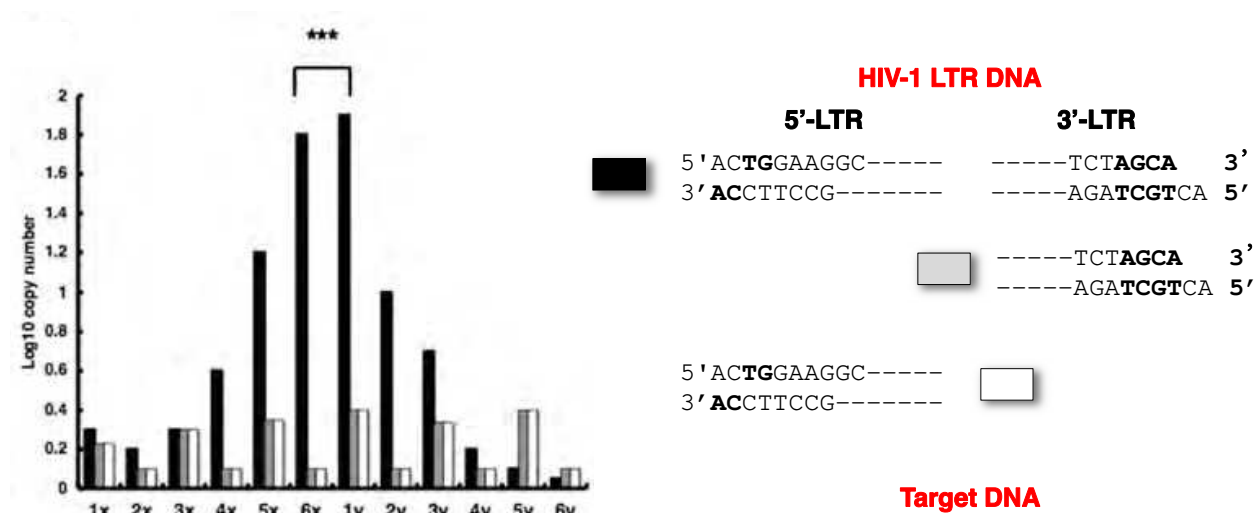


Fig. 11. *In vitro* integration site in the target repeat sequence DNA.

The vertical axis indicates the percentage of the PCR amplicons derived from proviral DNA integrating into individual units. The entire target sequence is shown. The integration efficiency was significantly higher when both 5'- and 3'-LTR DNA were used rather than when a single LTR DNA was used. The use of both 5'- and 3'-LTR DNA is one of the unique points of our protocol. x, GTGGAGGGCAGT; y, ACTGCCCCCAGC. ($*** P < 0.001$)

Interestingly, we found that the middle segment of the target sequence was more favorable for integration, even though the same sequence units were repeated in the target sequence. To explain this observation, we considered the possibility that a structural factor may contribute to selective integration into the middle segment. Thus, if a single strand of the target DNA focally appeared by rewinding of the target double strand DNA, a long hairpin or cruciform structure may form in the target sequence site. It is probable that, if the target sequence DNA is open, or rewound, then the top of such a secondary structure would be favorable for integration. DNA folding thermodynamic analysis was performed to determine secondary structure in the target DNA and a hairpin structure was indeed predicted by this analysis (Fig. 12).

containing the target sequence with substrate DNA containing modified sequence I or II in equal amounts, and examined the number of PCR product copies that originated from integration into the non-modified target sequence. Integration into the original, non-modified target sequence of the substrate DNA was significantly reduced when this DNA was mixed with the modified sequences (Fig. 14).

Two modified DNA sequences were prepared in which CA and GT were removed from the repeat unit at the middle site, termed modified sequence I and modified sequence II respectively. Red letters represent the TG/CA motifs. Yellow letters represent the GT/AC motifs that are observed in the HIV-1 proviral genome.

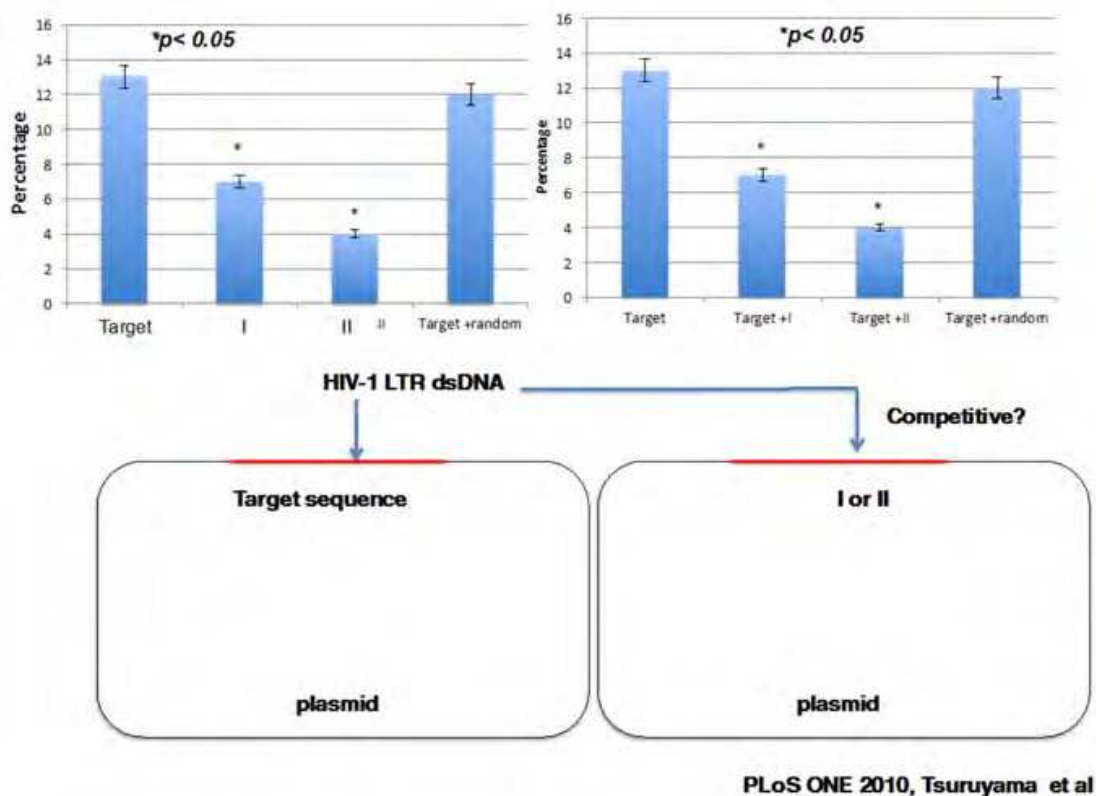


Fig. 14. *In vitro* integration using modified sequence I or II

The result showed significant reductions in the number of copies of PCR products derived from integrated DNA. In addition, integration selectivity was evidently suppressed when using the modified DNA targets (left graph, $*P < 0.05$). Substrate DNA containing the target sequence was then mixed with substrate DNA containing modified sequence I or II in equal amounts, and the percentage of PCR product copies originating from integration into the original target sequence were determined. Integration into the original target sequence was significantly reduced when this target was mixed with the modified sequences (right graph, $*P < 0.05$).

3.3 Biochemistry of the integrase: DNA structure fluctuation enhances selective integration

We digested circular DNA with HIV-1 integrase in a buffer containing various concentrations of manganese dichloride and measured the band intensity of linearized DNA

following electrophoresis. The relative band intensity increased when the concentration of MnCl_2 in the reaction buffer exceeded 40 mM (Fig. 15). This result raised the question of how such fluctuation in DNA structure influences the selectivity of *in vitro* HIV-1 integration. Furthermore, the percentage of integration into the target sequence DNA was found to increase significantly when the concentration of MnCl_2 exceeded 40 mM. The ratio of the PCR product number derived from integration into the target sequence DNA was also found to increase significantly when the MnCl_2 concentration exceeded 40 mM (Fig. 16). In conclusion, such fluctuation may generate a favorable conformation of target DNA for integration of the HIV-1 LTR [16, 17].

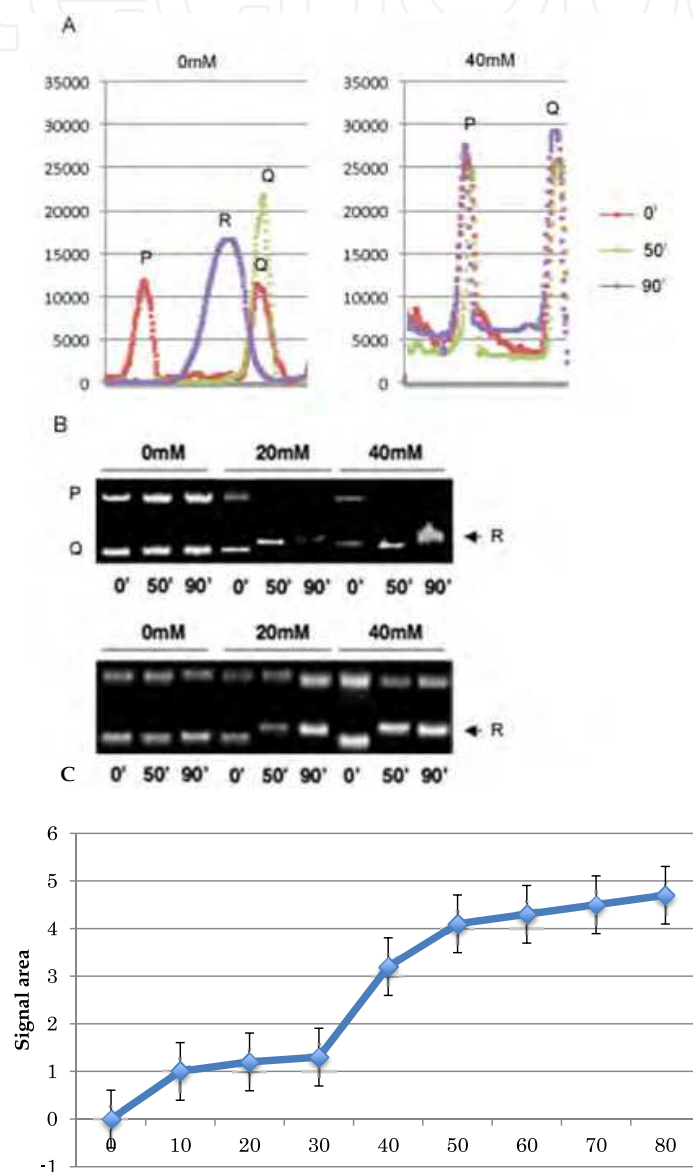


Fig. 15. Effect of MnCl_2 concentration and structural-fluctuation of target DNA on integration

(A) Electrophoretogram of plasmid plus target DNA (left) and plasmid DNA (right). P and Q indicate structural isomers of the circular DNA. R, a single fragment, indicates the digested DNA fragment after 90 min incubation. The vertical axis indicates relative signal

intensity and the horizontal axis indicates electrophoretic mobility distance. (B) Electrophoresis of the DNA following incubation of recombinant integrase in buffer containing 0, 20, or 40 mM MnCl_2 following incubation for 0, 50, and 90 min. P, Q, and R are as described in (A). Upper and lower photographs display electrophoresis of plasmid plus target DNA and plasmid DNA, respectively. Significant fluctuation in R was observed in the electrophoresed DNA following 90 min incubation. (C) Relative signal area of the digested 4.0-kb substrate DNA corresponding to R in (B). Error bars represent standard deviation (S.D.). Fragment R area was calculated by integration of the individual curves shown in the electrophoretogram (A) with respect to electrophoretic mobility distance. Signal area significantly increased when 40 mM MnCl_2 was included in the buffer.

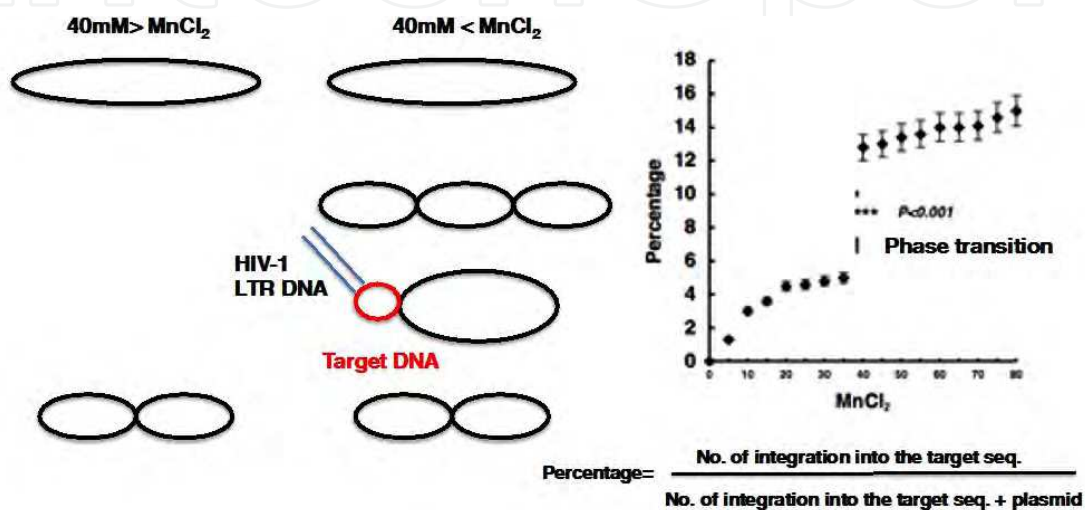


Fig. 16. DNA structural fluctuation and integration

A MnCl_2 concentration greater than 40 mM significantly increased the percentage of integration into the target sequence DNA. The percentage of copy number of PCR products derived from integration into the target sequence DNA was found to increase significantly when the concentration of MnCl_2 exceeded 40 mM. It is concluded that such fluctuation may generate a favorable conformation of target DNA (in red) for integration of HIV-1 LTR DNA.

4. Conclusion

In conclusion, selective HIV-1 integration was proved at an *in vitro* level in this study. The factors that determine this selectivity are (i) a sequence motif, including CAGT, and (ii) a structural factor that can be induced by fluctuation of a high concentration of MnCl_2 [16, 17]. The findings shown in Figs. 9 and 10 indicate that the percentage of integration into the target sequence was significantly greater than the integration rate into the random and deleted sequences. Moreover, the entire repeat sequence or secondary structure may be a target of integration.

In particular, our findings that sequences similar to the target DNA sequence interfere with integration (Fig. 14). Thus, a modified DNA can act as a decoy for the target DNA. In the present study, integration efficiency and selectivity were highly sensitive to MnCl_2 concentration in the reaction buffer. In particular, the integration efficiency and selectivity increased significantly when the MnCl_2 concentration was increased from 30 mM to 40 mM.

Fluctuations in the electrophoretic mobility of the substrate DNA also increased. These results suggest that there is a threshold concentration of $MnCl_2$ for *in vitro* integration, probably because $MnCl_2$ induces instability of secondary structure and therefore phase transition of the host DNA strand may occur. Target DNA can probably not generate the specified stable conformation under 40mM of $MnCl_2$. Based on these data as well as the data shown in Fig. 15, we propose that there are close correlations between structural changes in substrate DNA and integration selectivity and efficiency (Fig. 16, 17). We have used $MnCl_2$ for studies of *in vitro* integration because this salt is more appropriate than other salts for the generation of *in vivo* integration. However, during *in vivo* integration into the host genome, numerous DNA binding proteins and metal ions regulate the reaction in a complex manner. Therefore, the present data cannot be immediately applied to *in vivo* systems and further investigation using cell culture systems are necessary. Nevertheless, this *in vitro* integration assay is expected to facilitate understanding of the pathogenicity of HIV-1.

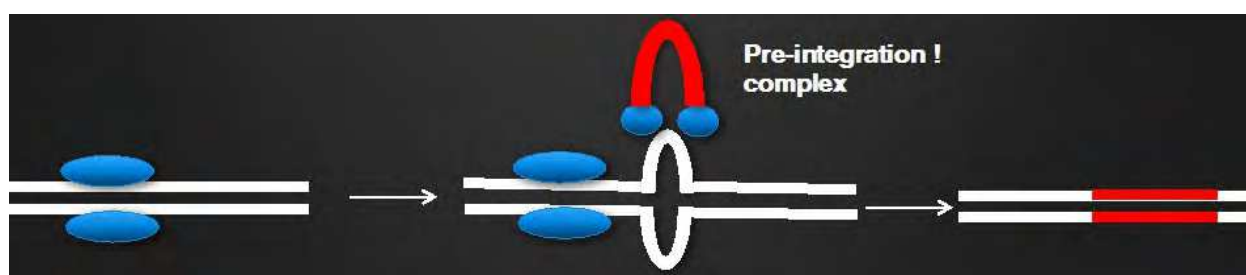


Fig. 17. A model of integration

The top of the secondary structure may be favorable for integration when the target DNA sequence is open or rewound by protein binding to the upstream of the target DNA sequence.

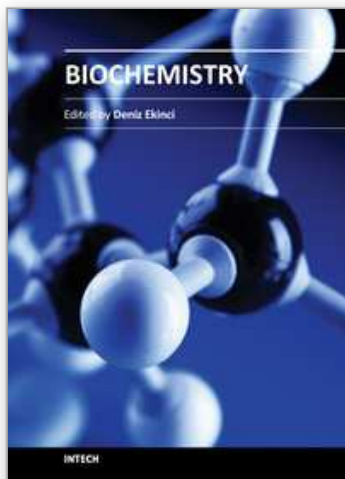
5. Acknowledgments

This work was supported by a Grant-in-Aid for Cancer Research from the Ministry of Education, Culture, Sports, Science, and Technology, Japan, and a Grant for Strategic Research on Cancer from the Ministry of Health, Labor, and Welfare, Japan (No. 72602-010-A03-0001) (<http://www.jsps.go.jp/j-grantsinaid/index.html>). The funders had no role in study design, data collection or analysis, in the decision to publish, or in preparation of the manuscript. The method described in this manuscript has been registered as "Nucleic acid having retroviral integration target-activity," patent number 4631084 in Japan (GenBank, DD323298). In relation to this patent, we also declare no conflict of interest. We are grateful to Masakazu Hatanaka and Tomokazu Yoshinaga for their helpful advice and insightful comments regarding this manuscript. In particular, we are also grateful to Dr. Tasuku Honjo and Dr. Hiroshi Hiai (Kyoto University) for their review of this study and for providing critical advice, and to Miss Hiroko Saito for her excellent technical support.

6. References

- [1] Coffin, J.M.; Hughes, S.H. & Varmus, H.E. (1997). *Retroviruses*. New York: Cold Spring Harbor Laboratory Press.

- [2] Wu, X.; Li Y.; Crise, B. & Burgess, S.M. (2003). Transcription start regions in the human genome are favored targets for MLV integration. *Science* 300:1749-1751.
- [3] Schröder, A.R.; Shinn, P.; Chen, H.; Berry, C.; Ecker, J.R.; et al. (2002). HIV-1 integration in the human genome favors active genes and local hotspots. *Cell* 110: 521-529.
- [4] Tsukahara, T.; Agawa, H.; Matsumoto, S.; Matsuda, M.; Ueno, S.; et al. (2006). Murine leukemia virus vector integration favors promoter regions & regional hot spots in a human T-cell line. *Biochem Biophys Res Commun.* 345:1099-1107.
- [5] Holman, A.G. & Coffin, J.M. (2005). Symmetrical base preferences surrounding HIV-1, avian sarcoma/leukosis virus, and murine leukemia virus integration sites. *Proc Natl Acad Sci U S A* 102: 6103-6107.
- [6] Wu, X.; Li, Y.; Crise, B.; Burgess, S.M. & Munroe, D.J. (2005). Weak palindromic consensus sequences are a common feature found at the integration target sites of many retroviruses. *J Virol.* 79: 5211-5214.
- [7] Derse, D.; Crise, B.; Li, Y.; Princler, G.; Lum N.; et al. (2007). Human T-cell leukemia virus type 1 integration target sites in the human genome, comparison with those of other retroviruses. *J Virol.* 81: 6731-6741.
- [8] Yoshinaga, T. & Fujiwara, T. (1995). Different roles of bases within the integration signal sequence of human immunodeficiency virus type 1 *in vitro*. *J Virol.* 69: 3233-3226.
- [9] Tsuruyama, T.; Nakamura, T.; Jin, G.; Ozeki, M.; Yamada, Y.; et al. (2002). Constitutive activation of Stat5a by retrovirus integration in early pre-B lymphomas of SL/Kh strain mice. *Proc Natl Acad. Sci. U. S. A.* 99: 8253-8258.
- [10] Akagi, K.; Suzuki, T.; Stephens, R.M.; Jenkins, N.A. & Copeland, N.G. (2004). RTCGD, retroviral tagged cancer gene database. *Nucleic Acids Res.* 32 (Database issue), D523-527.
- [11] Nosaka, T.; Kawashima, T.; Misawa, K.; Ikuta, K.; Mui, A.L.; et al. (1999). STAT5 as a molecular regulator of proliferation, differentiation, & apoptosis in hematopoietic cells. *EMBO J* 17: 4754-4765.
- [12] Schwaller, J.; Parganas, E.; Wang, D.; Cain, D.; Aster, J.C. et al. (2000). Stat5 is essential for the myelo- & lymphoproliferative disease induced by TEL/JAK2. *Mol Cell* 6:693-704.
- [13] Tsuruyama, T.; Nakai, T.; Hiratsuka, T.; Jin, G.; Nakamura, T. & Yoshikawa, K. (2010). In vitro HIV-1 selective integration into the target sequence and decoy-effect of the modified sequence. *PLoS One* 5 : e13841.
- [14] Tsuruyama, T.; Nakamura, T.; Jin G.; Ozeki, M.; Yamada, Y. & Hiai, H. Constitutive activation of Stat5a by retrovirus integration in early pre-B lymphomas of SL/Kh strain mice. *Proc Natl Acad Sci U S A.* 2002 Jun 11.; 99(12):8253-825.
- [15] Iwaki, T.; Makita, N. & Yoshikawa, K. (2008). Folding transition of a single semiflexible polyelectrolyte chain through toroidal bundling of loop structures. *Journal of Chemical Physics* 129: 065103.
- [16] Ueda, M.; & Yoshikawa, K. (1996). Phase transition and phase segregation in a single double-stranded DNA molecule. *Physical Review Letters* 77: 2133-2136.



Biochemistry

Edited by Prof. Deniz Ekinci

ISBN 978-953-51-0076-8

Hard cover, 452 pages

Publisher InTech

Published online 02, March, 2012

Published in print edition March, 2012

Over the recent years, biochemistry has become responsible for explaining living processes such that many scientists in the life sciences from agronomy to medicine are engaged in biochemical research. This book contains an overview focusing on the research area of proteins, enzymes, cellular mechanisms and chemical compounds used in relevant approaches. The book deals with basic issues and some of the recent developments in biochemistry. Particular emphasis is devoted to both theoretical and experimental aspect of modern biochemistry. The primary target audience for the book includes students, researchers, biologists, chemists, chemical engineers and professionals who are interested in biochemistry, molecular biology and associated areas. The book is written by international scientists with expertise in protein biochemistry, enzymology, molecular biology and genetics many of which are active in biochemical and biomedical research. We hope that the book will enhance the knowledge of scientists in the complexities of some biochemical approaches; it will stimulate both professionals and students to dedicate part of their future research in understanding relevant mechanisms and applications of biochemistry.

How to reference

In order to correctly reference this scholarly work, feel free to copy and paste the following:

Tatsuaki Tsuruyama (2012). HIV-1 Selectively Integrates Into Host DNA In Vitro, Biochemistry, Prof. Deniz Ekinci (Ed.), ISBN: 978-953-51-0076-8, InTech, Available from:

<http://www.intechopen.com/books/biochemistry/hiv-1-selectively-integrates-into-the-host-dna-in-vitro>

INTECH
open science | open minds

InTech Europe

University Campus STeP Ri
Slavka Krautzeka 83/A
51000 Rijeka, Croatia
Phone: +385 (51) 770 447
Fax: +385 (51) 686 166
www.intechopen.com

InTech China

Unit 405, Office Block, Hotel Equatorial Shanghai
No.65, Yan An Road (West), Shanghai, 200040, China
中国上海市延安西路65号上海国际贵都大饭店办公楼405单元
Phone: +86-21-62489820
Fax: +86-21-62489821

© 2012 The Author(s). Licensee IntechOpen. This is an open access article distributed under the terms of the [Creative Commons Attribution 3.0 License](#), which permits unrestricted use, distribution, and reproduction in any medium, provided the original work is properly cited.

IntechOpen

IntechOpen