

We are IntechOpen, the world's leading publisher of Open Access books Built by scientists, for scientists

4,800

Open access books available

122,000

International authors and editors

135M

Downloads

Our authors are among the

154

Countries delivered to

TOP 1%

most cited scientists

12.2%

Contributors from top 500 universities



WEB OF SCIENCE™

Selection of our books indexed in the Book Citation Index
in Web of Science™ Core Collection (BKCI)

Interested in publishing with us?
Contact book.department@intechopen.com

Numbers displayed above are based on latest data collected.

For more information visit www.intechopen.com



Free Software for PET Imaging

Roberto de la Prieta
Universidad Rey Juan Carlos
Spain

1. Introduction

In recent years, there has been a large influx of image analysis software made freely available to the public. *Free software* or *libre software* is any software that can be used, studied, modified, copied and redistributed in modified or unmodified form either without or with minimal restrictions (see Stallman (2002) and Free Software Foundation (2011) for licenses, copyleft and further details). In practice, and in particular for the software reviewed here, straightforward availability at no cost as well as open code source are also granted. Multiplatform availability is also very common, i.e. the product is available for different operating systems and architectures. Additionally, free software users –be them clinicians or software engineers– can take advantage of other nice features such as on-line documentation, user forums and email lists that are also provided with some applications.

Free software is advantageous to the community in several ways. First, by providing a platform on which to perform analysis without having to re-implement and re-program the details of the algorithms themselves. Second, it also promotes *open research*, the dissemination of source code, data, and publication, with the goals of research reproducibility, method validation and advancement (see OpenScience Project (2011)). Thus, in this spirit, free software is the main focus of this chapter's software compilation.

It is worth saying that although any imaging processing software makes the analytical technicalities less complicated, a free software user must ensure that the implementation of the method is sufficiently understood in order to interpret the results accurately. It is the user's responsibility to verify that the software be well documented, validated, and kept up to date in order to ensure that the quality requirements of the particular task are met. Likewise, another caveat of free software is that any specific license restrictions for software use (i.e. some free software packages are restricted to academic research and not available for commercial applications) are left to the user.

Due to the above mentioned advantageous features, free software has become an appealing choice for many technical and non technical applications. Specifically, PET imaging practitioners –researchers and eventually clinicians– may benefit from a number of advantages by incorporating some pieces of free software to their set of tools. The main focus of this chapter is a practical one. It is intended as a, possibly incomplete, free software guide to available packages that help to accomplish daily or less usual tasks related to this medical imaging field. We will review a variety of free packages ranging from plain image viewers, to the more complex or demanding system modeling and image reconstruction applications.

Other tasks such as image manipulation/post-processing and quality evaluation are also addressed. The chapter is divided in sections according to the above mentioned key tasks.

A thorough discussion of the theory and methodologies underlying the applications is outside the scope of this chapter, although some guidelines will be given. The reader should instead refer to the given bibliography for suggested material covering these topics. Finally, the listings of freely available PET imaging software included in this chapter are not intended to be exhaustive. The software reviewed here was included because the author was familiar with it.

2. Image viewers

A wide variety of (free) image viewers are available for medical imaging allowing the user visualization of images in either a raw format, a proprietary format or a standardized format (such as DICOM, Analyze, PACS). Additionally, these packages usually include some or many preprocessing and postprocessing capabilities. Here we will briefly review the following (see table 1 and fig.1): AMIDE (Loening & Gambhir (2003)), MRIcro (Rorden (2011)), OsiriX (Rosset et al. (2004)), GpetView (Watabe (2011)). The reader may also consult Tamburo (2010) for a more detailed list including 3DSlicer, ImageJ and VTK among others.

2.1 AMIDE

AMIDE is a completely free tool for viewing, analyzing, and registering volumetric medical imaging data sets. It has been written on top of the Gtk+ libraries, and runs on any system that supports this toolkit (Linux, Windows, Mac OS X, etc. AMIDE is available at <http://amide.sourceforge.net/> and some of its features include:

- Arbitrary orientation, thickness, and time period slice viewing of a data set
- Multiple data sets can be loaded and viewed at once, with either linked or fused views. Each data set can be viewed from any orientation. Fusing can be done by blending or overlay
- Nearest neighbor and trilinear interpolation functions
- Zooming
- The following color maps are supported: Black/White, White/Black, Red/Green/Blue Temperature, Hot Metal/Blue/Green, Spectrum, NIH/UCLA
- Threshold: data sets are thresholded independently. Data sets can be thresholded over the entire data set or over each slice.
- Three-dimensional regions of interest (ROIs) can be drawn directly on the images and statistics can be generated for these ROIs. Currently supported ROIs are ellipsoids, elliptic cylinder's, boxes, and isocontours
- Imports raw data files (8bit,16bit,32bit,float,etc). Also imports Acr/Nema 2.0, Analyze (SPM), DICOM 3.0, InterFile3.3, ECAT 6/7, and Gif87a/89a (using the (X)medcon/libmdc)
- Imports most clinical DICOM files (using the DCMTK library)
- Allows cropping and clearing regions of data sets
- Anisotropic filtering wizard. Current filters: Gaussian, 1D Median, and 3D Median
- Saves studies (ROI and Data Set data) as XML data
- Series of slices can be viewed

- Fly through movies can be generated as MPEG1 files
- True volume rendering support with the capability of rendering multiple data sets at a time. Series of renderings can be saved as MPEG1 movies. Data sets can also be rendered as stereoscopic image pairs
- Alignment of data sets is supported using fiducial markers. This is done by placing fiducial reference points on the data sets to be aligned, and then running an alignment wizard to perform a rigid body transformation (Procrustes method)
- A profile tool is included that can calculate Gaussian fits and FWHM's of the generated line profiles. Profiles can also be saved for external use.

2.2 MRicro

MRicro allows Windows and Linux users to view medical images. It is a standalone program, but includes tools to complement SPM (software that allows neuroimagers to analyze Magnetic Resonance Imaging (MRI), functional MRI (fMRI) and PET images, see 5.4.1). MRicro allows efficient viewing and exporting of brain images. In addition, it allows neuropsychologists to identify regions of interest (ROIs, e.g. lesions). MRicro can create Analyze format headers for exporting brain images to other platforms. Users familiar with other Windows programs will find that this software is fairly straightforward to use. MRicro is available at <http://www.cabiatl.com/mricro/>.

2.3 OsiriX

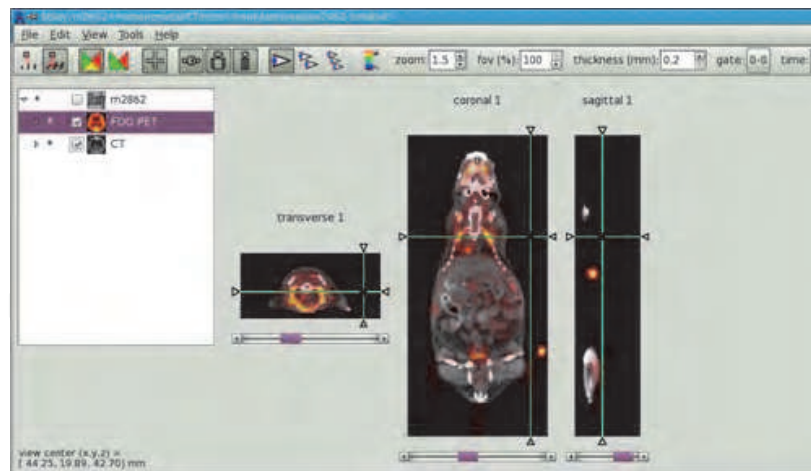
OsiriX is an image processing software dedicated to DICOM images produced by imaging equipment such as (MRI, CT, PET, PET-CT, SPECT-CT or Ultrasounds. It can also read many other file formats: TIFF (8,16, 32 bits), JPEG, PDF, AVI, MPEG and Quicktime. It is fully compliant with the DICOM standard for image communication and image file formats. OsiriX is able to receive images transferred by DICOM communication protocol from any PACS or imaging modality (C-STORE SCP/SCU, and Query/Retrieve: C-MOVE SCU/SCP, C-FIND SCU/SCP, C-GET SCU/SCP). A drawback of this tool comes from the fact that it is only available for Mac OS and iPhone platforms (<http://www.osirix-viewer.com/>).

2.4 GpetView

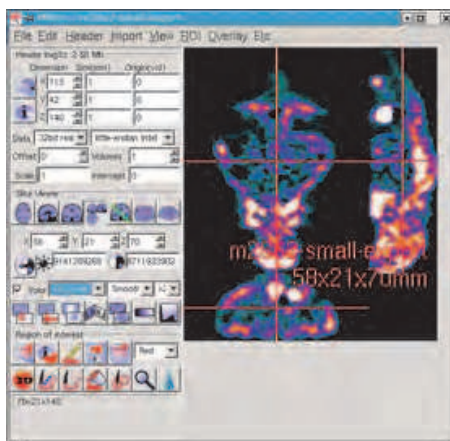
GpetView is a light-weight image viewer based on Gtk+ library. The supported image format is ANALYZE(TM) format (Mayo Foundation). GpetView can run on Unix-systems, such as Linux, Solaris, IRIX, Mac OS-X etc. From Version 2.0, GpetView can also run on Win32 system, if you have installed Glib and Gtk+(2.x). Glib andGtk+ can be found at <http://www.gtk.org>. For Windows users, you can find Gtk+ libraries at <http://gladewin32.sourceforge.net/modules/news/>

GpetView has the following features;

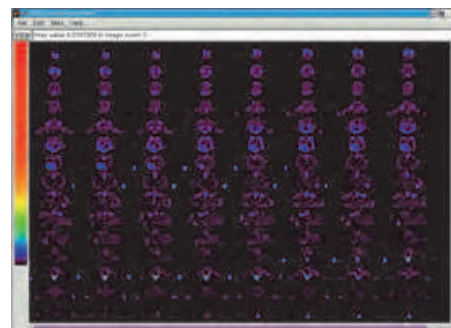
- Very light-weight
- View images as transverse, coronal, or sagittal
- Change color-map (support Analyze lkup file)
- Zoom images
- ROIs include shapes of circle, ellipse, rectangle, polygon and automatic edge detection
- Image histogram and profile



(a) AMIDE



(b) MRIcro



(c) GpetView

Fig. 1. Some screenshots of image viewers

	AMIDE	MRIcro	OsiriX	GpetView
Programming language	C language	?	Objective C/Various	C language
Open source	yes	no	yes	yes
License	GPL	BSD	LGPL	GPL
64-bit support	yes	yes	yes	yes
Multiplatform	♣♣♣	♣♣♣	♣	♣♣♣
Easy to install	♣	♣♣♣	♣♣♣	♣
Easy to use	♣♣	♣♣	♣♣♣	♣♣♣
Fast	♣♣	♣	♣♣♣	♣♣♣
Disk space	♣♣	♣♣♣	♣♣	♣♣♣
Rendering	♣♣	—	♣♣♣	—
Color maps	♣♣♣	♣♣	♣♣♣	♣
Image formats	♣♣♣	♣♣	♣♣♣	♣

Table 1. Comparison of viewers features

3. Image reconstruction

Because the process of data acquisition is random in nature there always exists an unavoidable resolution/noise (or equivalently, bias/variance) trade-off in all the nuclear medicine imaging modalities. Any reconstruction algorithm is somehow intended to solve this compromise in some optimal way. Before going into the software package specific features, we will take a bird's-eye view of some important issues concerning PET reconstruction.

3.1 Algorithms

Algorithms for image reconstruction from projections (in particular, PET and SPECT image reconstruction) fall into two broad categories: *direct* and *indirect* methods.

3.1.1 Analytic methods

Algorithm of this first group, a.k.a. direct methods, represent a closed formula obtained by discretization of different expressions of the inverse Radon transform. Thus, for 2D reconstruction we find the well known Filtered Backprojection (FBP) or Convolution Backprojection (CBP) algorithms (see, for instance Kak & Slaney (1988)). For 3D acquisition, the situation is more involved and many options are at hand. However, the 3D Re-Projection (3DRP) algorithm, a.k.a. PROMIS (Kinahan & Rogers (1989)), has become an option of choice.

At this point, it is worth mentioning two approaches in order to enhance the performance of direct methods. First of all, the use of the standard Ram-Lak or *ramp* filter in the convolution or filtering step give rise to the striking artifacts characteristic of this methods. To alleviate those undesirable effects various windowing filters have been proposed in the literature (Hamming, Shepp-Logan, Parzen, etc.) in order to de-emphasize the high frequencies of the ramp filter. Unfortunately the introduction of a window filter to reduce noise will produce an unavoidable image *blurring* effect. In practice, by the selection of the cut-off filter parameter the user choose the resolution/noise trade-off desired for a particular reconstruction. Secondly, another important part of the direct method is the backprojection step in which the projection profiles are smeared back to the image domain. Because of the finite sampling data, the process needs an interpolation step. In this sense, one can use nearest-neighbor, linear, bi-linear, cubic, or spline interpolation among other choices.

3.1.2 Rebinning methods

Approximate direct methods, a.k.a. *rebinning* methods, manipulate the 3D projection data in order to obtain a richer 2D set that can be reconstructed using some 2D direct method. This reduces the amount of data and speeds-up the reconstruction process. Popular rebinning algorithms include, from less to more sophisticated approaches, Single Slice Rebinning (SSRB), Multiple Slice Rebinning (MSRB), Fourier Rebinning (FORE), and variations such as FOREX and FOREJ (see Daube-Witherspoon & Muehllehner (1987); Defrise et al. (1997); Lewitt et al. (1994)).

3.1.3 Iterative methods

On the other hand, indirect methods, i.e. *iterative* algorithms take a different approach. Starting from an initial guess for the image to reconstruct (for example a constant image or a 2D FBP reconstruction) they make successive improved guesses by projecting and

backprojecting the data between image and sinogram spaces. Iterative methods in ET, though leading to a much higher computational burden, have shown better performance than direct methods because (i) they take into account the discrete nature of the measured data, and (ii) due to their ability to incorporate a measurement or *system model*. This is achieved by means of the so-called *transition* or *system matrix* (SM). Algorithms in this category include the Algebraic Reconstruction Technique (ART) (see Kak & Slaney (1988)) and variations such as SART, MART, the Least Squares (LS), and generalizations such as Weighted Least Squares fit (WLS), and the penalized version (PWLS) (see Fessler (1994); Kaufman (1993)). In addition to the above mentioned features (i) and (ii) a special class of iterative algorithms called *statistical iterative algorithms* are able to incorporate (iii) a statistical model for the process of data acquisition (or *noise model*). The well known Maximum Likelihood Expectation Maximization (ML-EM) algorithm of Shepp & Vardi (1982) and its accelerated version Ordered Subsets EM (OSEM) of Hudson & Larkin (1994) belong to this class. Finally, the class of penalized or regularized algorithms incorporate (iv) constraints (positivity, anatomical tissue boundaries information) or *a priori* regularization/penalization. Bayesian Maximum a Posteriori (MAP) algorithms belong to this category. The reader may consult Lewitt & Matej (2003) Defrise et al. (2005) and Qi & Leahy (2006) for a review on reconstruction algorithms in ET.

All in all, and according to Fessler (1994) a statistical iterative reconstruction algorithm can be regarded as made of five components: (i) a finite parametrization of the positron-annihilation distribution, *e.g.* its representation as a discretized image, (ii) a system model that relates the unknown image to the expectation of each detector measurement, (iii) a Statistical model for how the detector measurements vary around their expectations, (iv) an objective function that is to be maximized to find the image estimate, (v) a numerical algorithm, typically iterative, for maximizing the objective function, including specification of the initial estimate and a stopping criterion.

3.2 System matrix

The quality of an iterative reconstruction algorithm heavily relies on the above-mentioned system matrix (SM) (Rafecas, Boning, Pichler, Lorenz, Schwaiger & Ziegler (2004), Qi & Huesman (2005)). The introduction of system modeling techniques (*i.e.* detailed descriptions of the physical phenomena underlying the data acquisition process) in the generation of the SM improves the reconstruction both in terms of resolution and quantitative accuracy. The SM may be generated from measurements taken in the real system where the reconstruction is to be performed (Frese et al. (2003), Panin et al. (2006), Tohme & Qi (2009)). This approach has been successfully incorporated within the clinical setting. However, while this method results in demonstrated improvements in image quality, it requires extensive and very accurate point source measurements (*e.g.* using a positioning robot).

A widely used approach to calculate the SM is to perform a Monte Carlo simulation. Monte Carlo integration can incorporate complex but interesting effects of the physics underlying PET data acquisition (see next section). However, Monte Carlo codes are complex and often quite time consuming, and they may produce noisy results if not monitored adequately. Thus, MC based integration might be impractical if the number of tubes of response (TORs) is too big, not enough computation is available or the setup of the scanner has to be changed often.

On the other hand, a number of analytical approaches have been proposed in the literature in order to compute the system matrix since the seminal work of Shepp & Vardi (1982). There,

two-dimensional (2D) *angle of view* and *area of intersection* models were used to approximate the geometric sensitivity of a PET scanner and also a more elaborated model including positron range effects was proposed.

The *length of intersection* model, a.k.a. *ray-tracing*, has efficient implementations such as the Siddon algorithm (Siddon (1985)) that has been applied to PET in Herman & Meyer (1993) and Zhao & Reader (2003) or the orthogonal distance-based ray-tracer of Aguiar et al. (2010). The ray-tracing technique allows for *on the fly* calculation of the matrix elements thus avoiding SM storage problems. However, while ray-tracing is fast, the length of intersection is not a physically meaningful quantity representing the probability of detection and it is known to yield artifacts (i.e. mismatched projector/backprojector pairs). Similarly, the *3D volume of intersection* (Ollinger & Goggin (1996), Scheins et al. (2006)) should be corrected somehow if one desires a reasonably accurate model incorporating the effects of radial distance to the center of the field of view.

The natural 3D generalization of the 2D angle of view model, the *solid angle of view* model has also been used to compute the geometric sensitivity of a scanner, either by approximate (Terstegge et al. (1996), Qi et al. (1998), Huesman et al. (2000), Soares et al. (2003), Markiewicz et al. (2005)) or exact calculations (de la Prieta et al. (2006), Iriarte et al. (2009)) or by a combination of several contributions (geometry, positron range, photon non-collinearity, inter-crystal scatter and penetration) in a factorized matrix (see Mumcuoglu et al. (1996), Qi et al. (1998), Rahmim et al. (2008) and the references therein)

Interesting analytic 2D models taking into account the linear attenuation of a beam of gamma-rays impinging on a crystal scintillator have been proposed in Lecomte et al. (1984), Schmitt et al. (1988), Karuta & Lecomte (1992) and Selivanov et al. (2000). These models have been further developed and adapted for multilayer small-diameter PET scanners in Strul et al. (2003).

In spite of being sparse in nature, the calculation and efficient storage of the SM remains an extremely challenging task for currently available clinical tomographs, due to the large number of matrix elements (between 10^{13} in small animal PET systems to 10^{16} for a standard clinical human PET scanner) and storage requirements (on the order of TeraBytes), so it needs especial manipulation techniques in real systems (Johnson et al. (1995), de la Prieta (2004), Rehfeld & Alber (2007), Ortuño et al. (2010)). This is the reason why prototyping languages, such as MATLAB, have not yet offered a solution for 3D realistic sized PET reconstruction (though some freely available MATLAB add-ons for 2D PET reconstruction can be found at <http://www.eecs.umich.edu/~fessler/code/> and in the MATLAB Central web page) In this sense, some researchers have shown renewed interest in high performance computing solutions such as PC clusters (Jones et al. (2006), Beisel et al. (2008)) and Graphic Processing Units (GPUs) (Herraiz et al. (2009), Zhou & Qi (2011)).

Different solutions to the various problems posed by the incorporation of such a matrix in the projection/backprojection steps of the iterative reconstruction algorithm are scattered throughout the literature. In practice, scanner manufacturers implement those algorithms in proprietary software packages that come with the workstation of the scanner equipment. Although tremendous effort has been devoted to the development of strategies and code to generate the SM and incorporate it in the reconstruction procedures –see for instance ASPIRE (Fessler (1997)), FIRST (Herraiz et al. (2006)) and PRESTO (Scheins & Herzog (2008))–, to the

best of our knowledge, not many truly free software packages are available to this end (see also section 5.6).

3.3 Software for Tomographic Image Reconstruction (STIR)

In this section we will review the STIR library (Thielemans et al. (2006)) This library evolved from the European Union funded PARAPET project, and was later extended by Hammersmith Immanet and made into an Open Source project. The software is licensed under the GPL, LGPL and PARAPET licenses (see the STIR Sourceforge site for details, Thielemans & al. (2011)). STIR is an object oriented library for reconstruction of 2D/3D PET data written in C++ language. Let's see some of its features and practical considerations in further detail.

3.3.1 Installation

The installation of STIR should be straightforward for most Unix flavors: it is well known to work in AIX, Solaris and Linux. It can also be used in Windows versions using Cygwin (Cygwin (2011)). STIR requires a version of the C++ *boost libraries* (The boost libraries (2011)) to be downloaded and installed in the system. Once this requirement is met one can download the STIR sources in a .zip compressed file and then use the *GNU make* utility to compile the program to be run. The recommended compiler is *GNU gcc* but the use of other ones is also possible such as the free version of the Visual C++ Compiler.

Some extra features are possible at compile time:

- Parallel code with Open MPI (Open MPI (2011)) for the most relevant iterative algorithms and preliminary threaded code for some algorithms
- Enabling ECAT 7 file format support requires the Louvain la Neuve Ecat (LLN) library (<ftp://ftp.topo.ucl.ac.be/pub/ecat>)
- Enabling AVW support for data I/O, processing, analysis, visualization with the AVW Analyze library (http://mayoresearch.mayo.edu/mayo/research/robb_lab/avw.cfm)

Further details guiding the user in the process of installation in specific architectures are provided in the User's Manual.

3.3.2 Running STIR programs

Most STIR programs accept a single parameter in the command line, which is usually optional:

```
> executable_name [parameter filename]
```

The parameter file is a text file which uses an Interfile-like syntax. It is composed of keywords, corresponding to the names of the various parameters, with the values entered next to them. Spaces and tabs are normally irrelevant. Parameters omitted from the parameter file are assigned a default value. If a parameter file is not passed to the executable, the user is prompted for the required information.

3.3.3 File formats

The STIR utility and reconstruction programs frequently need to read and write files of image and projection data. Files formats are encountered in which data and header information

are maintained in separate files (e.g. interfile). In other formats, data files carry header information (e.g. the native GE Advance sinogram format).

Currently STIR supports the following formats: (a native version of) Interfile, GE VOLPET sinogram, ECAT6 and ECAT7 data. First steps have been taken to be able to use the AVW library as well as SimSET file formats.

Some scanners produce list mode data, which is essentially a list of events. STIR provides utilities to use the list mode files, for example to convert them to sinograms. It is also possible to reconstruct images directly from list mode data, although this has not been tested very well as of yet STIR 2.1. Currently supported list mode formats are specific to the ECAT HR+ and ECAT EXACT 3D scanners. There are some unfinished classes available on the STIR web-site to read LMF format files, in conjunction with the LMF library. However, these are obsolete as the OpenGATE project distributes scripts to enable STIR to read LMF format files.

3.3.4 STIR reconstruction algorithms

The library implements the following algorithm list:

- Analytical: 2DFBP, 3DRP
- Rebinning methods: SSRB
- Statistical algorithms: OSMAPOSL, OSSPS

OSMAPOSL is an ordered subset (OS) implementation of the One Step Late (OSL) algorithm of Green (1990), with various additional refinements (i.e Metz filter) and capabilities (see Jacobson et al. (2000) for a description of many details of the implementation. OSSPS is an OS implementation of the Paraboloidal Surrogate algorithm described in Ahn & Fessler (2003).

Although the OSMAPOSL can be regarded as a generalization of ML-EM, OSEM and MRP algorithms¹ the list of STIR available algorithms is somehow expandable (see next section) The 'situation' is summarized in Table 2.

The STIR library offers the user some (limited) choices in the projector/backprojector pairs (such as linear or B-Spline interpolation in the backprojector) and also in the image filters (separable convolution median or separable cartesian Metz filter) and statistical Priors (quadratic, median root) of the iterative algorithms.

3.3.5 STIR utilities

The library includes a number of valuable and independent utilities allowing to display results (X Windows, PGM, MathLink) perform operations with images and sinograms, convert between data formats, filter and compare data, precorrection or uncorrection, scatter correction, kinetic modeling, add noise and perform different tests.

3.3.6 STIR: future developments

The future improvements of the library will presumably pursue the following lines

- Add more automatic testing programs

¹ i.e. those algorithms can be obtained by adjusting the regularization parameter λ and the number HS subsets N_s . In short, $\lambda = 0, N_s = 0$ for ML-EM, $\lambda = 0, N_s > 0$ for OSEM, and $\lambda > 0, N_s = 0$ for MRP

Direct methods (ANALYTICAL)	Approximate	SSR ✓ MSR FORE
	Exact	FBP2D ✓ 3DRP ✓ ..
Indirect methods (ITERATIVE)	No model	ART, MART, SIRT ..
	Noise model (STATISTICAL)	.. LS, WLS, PWLS RAMLA ML-EM ✓ OSEM ✓ OSMAP-OSL ✓ PML ..

Table 2. Reconstruction algorithms implemented by STIR

- Add more algorithms: potentially ART, FORE and OSCB (the latter, based on the conjugate barrier method of Ben-Tal & Nemirovski (1999))
- Add more projectors/backprojector pairs and more priors
- Extend the parallelization of OSMAPOS and OSSPS to FBP3DRP, or use Open MPI (Open MPI (2011))
- Add compatibility of the interpolating backprojector with recent data processors of the library
- Add more kinetic models: Spectral Analysis, Logan Plot

3.4 PET Reconstruction & Utilities Software (PETRUS)

PETRUS is a library that the author of this chapter is developing and will hopefully be released soon. PETRUS is intended to be efficient, versatile and portable and features both commercial and research multi-ring multi-block scanner modeling. It also incorporates original strategies for the management of the transition matrix at three different levels: compression, symmetries (de la Prieta (2004) and sensitivity modeling (de la Prieta et al. (2006)).

4. System modeling and simulation

In order to obtain the best performance of an imaging system it is desirable to have an accurate description of the physical phenomena underlying the process of data acquisition. Thus in PET, relevant models include –among others– geometric sensitivity, positron range, photon pair non-colinearity, Compton scatter in tissues, detector sensitivity, inter-crystal scatter and penetration and detector dead-times. Additionally, one may have some statistical models

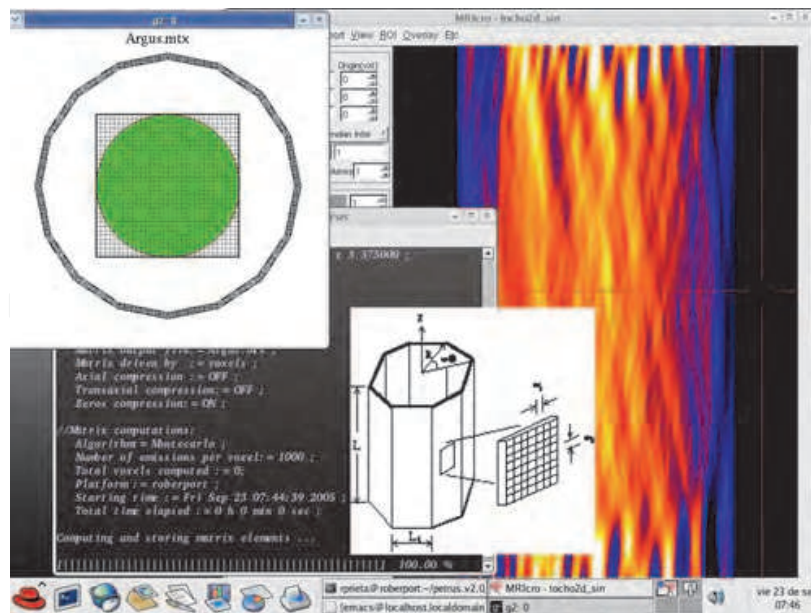


Fig. 2. Screenshot of PETRUS library at work

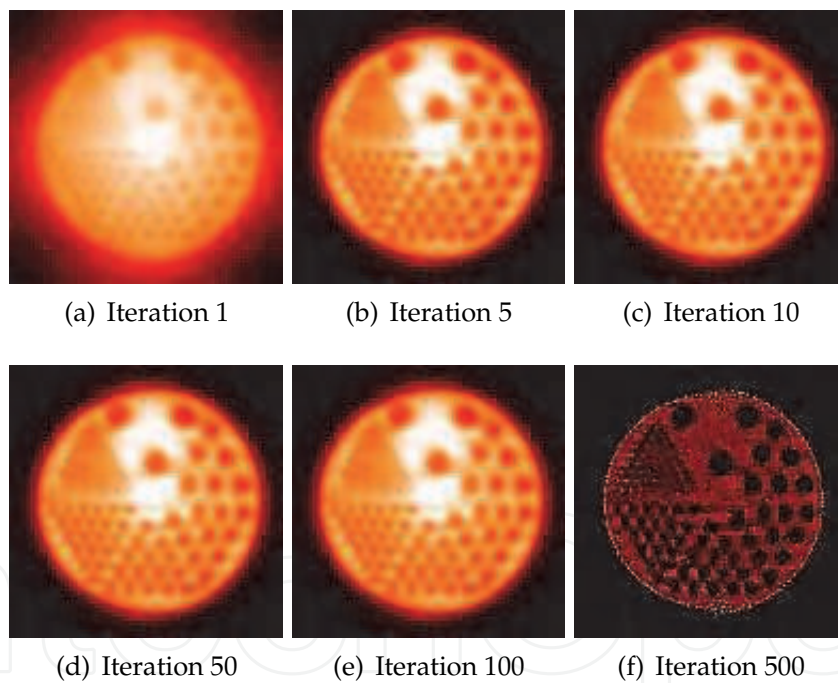


Fig. 3. Simulated acquisition of a Derenzo/Jaszczak digital phantom with 5×10^5 counts, reconstructed using the ML-EM algorithm implementation of the PETRUS library

for sinogram data, including compensation for the effect of randoms subtraction and the presence of scatter.

The reader may consult Charlton & Humberston (2000) Cherry et al. (2003) for background on the physics of PET data acquisition. Concerning PET technology, instrumentation and state-of-the-art machinery, the reader may want to consult Bendriem & Townsend (1998),

Bailey et al. (2005), and the recently published monograph Phelps (2006) for further details and overview of clinical uses.

Interestingly, system modeling plays a very important role in ET for optimizing detector design, configuration and materials (see Levin & Zaidi (2007) and Stickel & Cherry (2005))² and for assessing acquisition and processing protocols, for example to study differences in image quality when using radionuclides with various positron ranges (Bai et al. (2005)) or properties that are not possible to measure directly like the behavior of scattered photons (Dewaraja et al. (2000)). Likewise, it is also a valuable tool in the design and assessment of correction and reconstruction methods (Zaidi & Koral (2004), Holdsworth et al. (2002)) and in the study of an imaging system response (Alessio et al. (2006)). System modeling, may also be used in the generation of the system matrix either by means of analytical calculations (see previous section) or by Monte Carlo computations (Rafecas, Mosler, Dietz, Pogl, Stamatakis, McElroy & Ziegler (2004), Alessio et al. (2006), Vandenberghe et al. (2006), Rahmim et al. (2008)). Finally, system modeling helps data production for evaluation purposes, for instance by using a digital phantom (see section 5.1) and in the description and validation of recently issued code.

In addition to the computationally more advantageous but perhaps more heterogeneous analytical approaches, Monte Carlo (MC) simulations have become a standard tool in ET (Zaidi (1999), Buvat & Castiglioni (2002), Buvat et al. (2005)) because of their ability to simultaneously model many complex processes and phenomena by statistical methods using random numbers. In a MC analysis of PET, a computer model is created with characteristics as similar as possible to the real imaging system. In this model the photon and charged particle interactions are simulated based on known probabilities of occurrence, with sampling of the probability density functions (PDFs) using uniformly distributed random numbers. The simulation is similar to a real measurement in that the statistical uncertainty decreases as the number of events increases, and therefore the quality of the reported average behavior improves. To evaluate the trajectories and energies deposited at different locations the radiation transport is simulated by sampling the PDFs for the interactions of the charged particles or photons.

General purpose MC software such as EGS4 (Nelson et al. (1985)), ITS (Jordan (1993)), MCNP (Briesmeister & Los Alamos National Laboratory (1986)) and Geant4 (Agostinelli et al. (2003)) have mainly been developed for high energy physics and include a complete set of particle and cross-section data up to several GeV. On the other hand, a number of libraries for MC simulation dedicated to SPECT and PET have been released in the last decade. These packages have been designed to solve problems for a specific type of imaging system and have improved its performance by using large optimization strategies such as the variance reduction methods. The major drawbacks may be the long computing times required for some applications and the limited flexibility when simulating different types of geometries. Examples of this software packages are SIMIND (Ljungberg & Strand (1989)), PETSIM (Thompson et al. (1992)), PET-SORTEO (Reilhac et al. (2004)) and PeneloPET (España et al. (2009)). However, two packages have become very popular among the PET community: SimSET (Lewellen et al. (1998), University of Washington, Division of Nuclear Medicine (2006)) and in recent years GATE (Jan et al. (2004), OpenGATE Collaboration (2011)). We will briefly review the main features of them and make some comparisons.

² See also: *Virtual PET scanner. From simulation in GATE to a final multiring Albira PET/CT camera*, in this same monograph

4.1 Geant4 Application for Tomography Emission and Radiotherapy (GATE)

In 2001, a workshop was organized in Paris about the future of MC simulations in nuclear medicine. From the discussions about the disadvantages of available software, it became clear that a new dedicated toolkit for tomographic emission was needed which could handle issues such as decay kinetics, detector dead times and patient movements. An object-oriented solution was preferred. The coding began with the Lausanne PET instrumentation group with help from several other physics and signal processing groups. A workshop was organized the year after to define the development strategy. In 2002, the first OpenGATE meeting took place in Lausanne, with the first live demonstration of the first version of GATE. Since then a number of new versions has been released and a user email list with currently more than 1200 subscribers is available.

GATE is based on the Geant4 Monte Carlo code (Agostinelli et al. (2003)) and uses its libraries to simulate particle transport. The basic idea with GATE is that the user should not need to carry out any programming, but instead employ an extended version of Geant4 script language. The program has a layered architecture with a core layer that defines the main tools and features of GATE in C++, an application layer with C++ base classes and at the top, a user layer where the simulations are set up using command based scripts. One feature of GATE is the possibility of simulating time-dependent phenomena such as source kinetics and movements of geometries, for example patient motion, respiratory and cardiac motion, changes of activity distribution over time and scanner rotation. Geant4 does however require static geometries during a simulation. Because of the relatively short duration of a single event compared to a typical movement, this problem can be solved by dividing the simulation into short time steps and updating the geometries at every step.

4.1.1 Simulation architecture

GATE simulations are based on the execution of scripted commands gathered in macros. A simulation is generally divided into seven steps as follows:

1. The verbosity level is set for each simulation module. This means that it is possible to decide the amount of information about the simulation returned by the program. In the first step, the visualization options are also chosen.
2. The geometries are defined. In this step, the geometry, denoted 'world', in which the simulation is going to take place is initially defined. After that the scanner and phantom geometries are defined.
3. This step defines the detection parameters in the so called digitizer module. Here the characteristics of the system are prescribed such as energy and timing resolution. It is also possible to include dead time and other features related to the creation of the image.
4. The physical processes are chosen for the simulation. This includes the choice of interactions library, enabling or disabling interaction effects and setting cut-off energy or range for secondary particle production.
5. The radioactive source is defined. This includes particle type, activity and half-life, source geometry, emission angle and source movement.
6. Output format is chosen. Different output formats are available for different imaging systems.
7. The experiment is initialized and started.

Scanner type	Studied FoM	Agreement	References
ECAT EXACT HR+, CPS	Spatial resolution Sensitivity Count rates Scatter fraction	~ 3% < 7% good at activity < 20 kBq/ml ~ 3%	Jan & al. (2005a)
ECAT HRRT, Siemens	Spatial resolution Scatter fraction Scattered coinc. profiles Count rates	excellent (<0.2 mm) < 1% very good (visual) good (about 10%)	Bataille & al. (2004)
Hi-Rez, Siemens	Scatter fraction Count rates NEC curves	~ 1% good at activity < 40 Bq/ml good at activity < 40 Bq/ml	Michel & al. (2006)
Allegro, Philips	Count rate Scatter fraction	< 8% 8%	Lamare & al. (2006)
GE Advance, GEMS	Energy spectra Scatter fraction	not reported < 1%	Schmidtlein & al. (2006)
MicroPET P ₄ , Concorde	Spatial resolution Sensitivity Miniature Derenzo phantom	about 7% < 4% visual assessment	Jan et al. (2003)
MicroPET Focus 220, Siemens	Spatial resolution Sensitivity Count rates (mouse phantom)	~ 5% ~ 3% prompt coinc: < 5.5% delayed coinc: < 13%	Jan & al. (2005b)
Mosaic, Philips	Scatter fraction Count rates	~ 5% 4 – 15%	Merheb & al. (2006)

Table 3. Commercial PET systems modeled in GATE

4.1.2 Imaging systems in GATE

A number of different imaging systems are available in GATE: (for example 'scanner', 'SPECThead', 'cylindricalPET', 'ECAT', 'CPET' and 'OPET'). A system is defined as a family of geometries compatible with different data output formats. For cylindrical PET the available output formats are: ASCII, ROOT, RAW and list-mode (LMF). Other systems have different options. The purpose of system definition is to make the particle-in-detector interaction histories be processed realistically.

4.1.3 Source and physics

The radioactive source in a GATE simulation is defined by the radionuclide, particle type and position, direction of emitted radiation, energy and activity. The radioactive decay is performed by the Geant4 Radioactive Decay Module. There are two packages available to simulate electromagnetic processes: the standard energy package and the low energy package. The low energy package models photon and electron interaction down to 250 eV and includes Rayleigh scatter and provides more accurate models for medical application. To speed up the simulation, it is possible to set a threshold for secondary particle production.

4.1.4 The digitizer module

The digitizer chain simulates the electronics response of a sensitive detector, which are used to store information about particle interaction within a volume. The digitizer chain consists of some processing modules: the 'hit adder' that calculates the energy deposited in

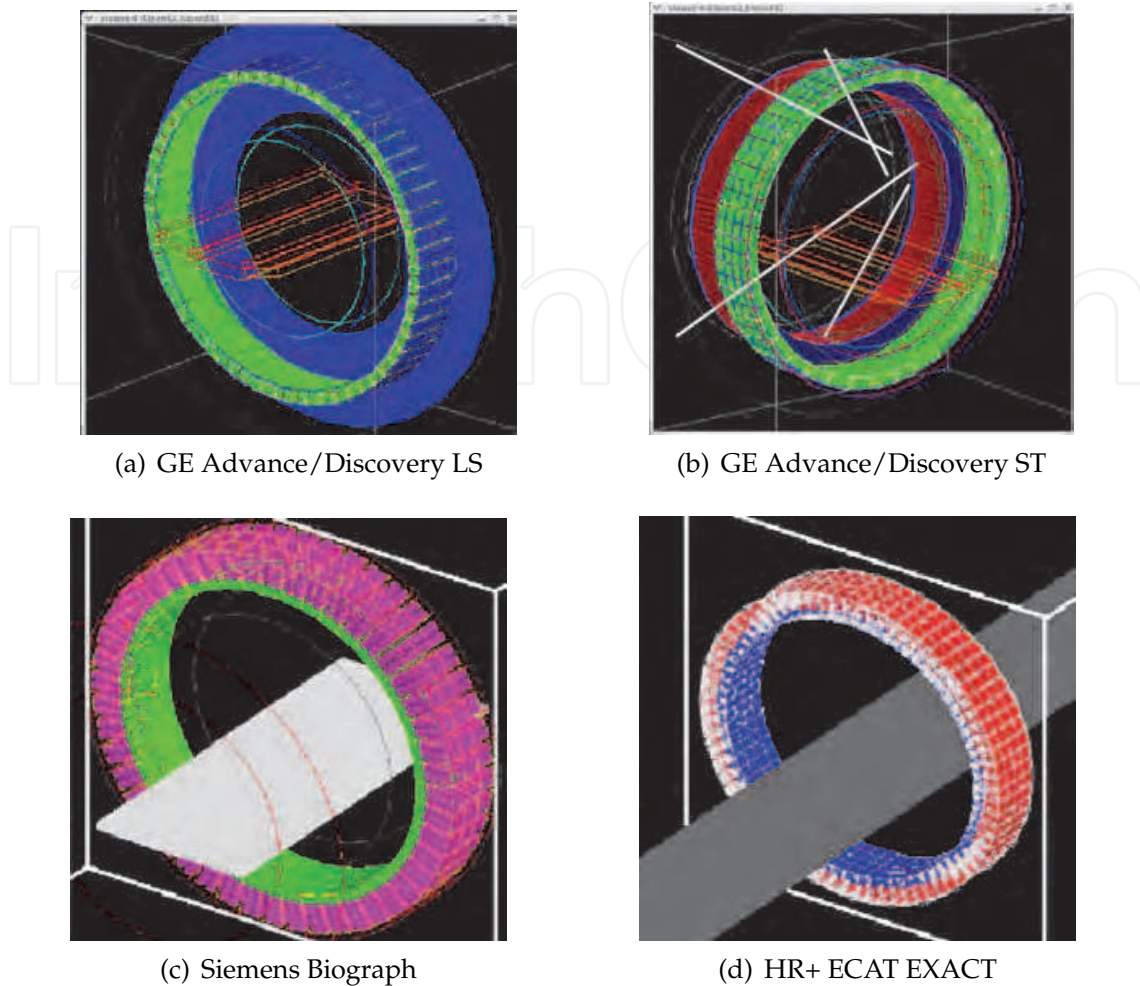


Fig. 4. Screenshots of some PET systems modeled in GATE

a sensitive detector by a given photon, the 'pulse reader' that adds pulses from a group of sensitive detectors yielding a pulse containing the total energy deposited in these detectors and assigned to the position of the largest pulse. There are also some modules wherein the user can define parameters such as energy resolution (the ability to sort photons of different energies), energy window (the energy span within which the photons will be registered), spatial resolution, time resolution (the ability to separate two events with regard to time), dead time and coincidence window (the time interval within which two detected photons will cause an event).

4.1.5 Output formats

Different output formats are available for different systems. The ASCII format is the simplest. It gives all information about the detected photons in a large text file. Each row corresponds to one event and includes information about event number, time of annihilation, positions of annihilation, scatter, energy deposition, detecting crystals and position. This output needs to be further processed to be useful, but GATE can automatically sort out coincidence events from single photon events. The ROOT format is also a very powerful output that can be analyzed by using special software. With this output it is easy to get histograms over

distributions of the angles between the two annihilation photons, the energies of the positrons, the time stamps of the decays and the ranges of the positrons. For an 'ECAT' system a sinogram output is available. This output automatically stores the events in 2D sinograms. For a 'cylindricalPET' system, the list mode format (LMF), can be used with other software for image reconstruction. However, only singles can be stored by GATE, which means that coincidence events have to be paired together afterwards. The RAW output gives access to raw images of source position for singles or coincidences. This output should be used in addition to other formats.

GATE is a software for which it is easy to create complicated models of different tomographic systems, making it possible to build a realistic model if one has the correct and detailed manufacturer specifications of a scanner. A major drawback with GATE, as with other MC packages, is that simulation times can be very long, especially for complex situations with voxelized phantoms and sources (on the order of one week on a cluster of 60 computers for realistic simulation of a SM). The other drawback is that the output data files are large, on the order of GB. Compared to other existing dedicated MC software, such as SimSET, GATE seems to be able to handle more complex situations and therefore it is possible to do more realistic simulations. Although in the latest release of GATE (version 6.0.0) a couple of variance reduction methods are available, presumably more efforts will be made to enhance the computational speed of the simulations. Finally, when using GATE it is also interesting to make use of enhanced data output formats, such as the ROOT output, in order to save disc storage space.

4.2 Simulation System for Emission Tomography (SimSET)

The SimSET package uses MC techniques to model the physical processes and instrumentation used in ET imaging. First released in 1993, SimSET has become a primary resource for many nuclear medicine imaging research groups around the world. The University of Washington Imaging Research Laboratory is continuing to develop SimSET, adding new functionality and utilities.

SimSET consists of different modules. The Photon History Generator (PHG) tracks the photons through the tomograph FOV and creates a photon history list with information about the photons reaching the camera. An object editor is used for definition of the activity and attenuation objects for the PHG. The collimator routine in SimSET is based on the 2D PET collimator that originally was implemented in the MC program PETSIM (Thompson et al. (1992)). The detector and binning modules are used to define Gaussian blurring of energy, and the photon events are then binned by combinations of number of scatters, axial position, angles and photon energy. The data are binned during the simulation run, but they can be reprocessed afterwards by the use of the photon history list.

The main advantages of GATE compared to SimSET are that GATE in contrast to SimSET can handle system dead time, random events, block detector geometries with distances between each crystal (SimSET can only handle continuous detector rings) and dynamic studies with time dependent processes. Unlike GATE, SimSET does not allow for MC simulation of the photon transport within the collimator and only includes an analytical model of the collimator response.

5. Additional tasks

Once the PET data has been collected and reconstructed some common postprocessing tasks or additional analysis may be necessary. On the other hand, one might need to generate simulated data in order to test or compare different reconstruction algorithms. For the sake of completeness, we have compiled here information on several areas of potential interest for the PET imaging practice. Thus, in this section we include a little background and useful links to freely available resources on digital phantoms, postprocessing tasks such as segmentation, registration and statistical analysis of data and quality assessment.

5.1 Digital phantoms

Computer simulated phantoms, a.k.a. digital phantoms (as opposed to physical phantoms) offer a convenient way to examine different imaging protocols in medical and small-animal imaging research. Used in combination with accurate system models of the data acquisition process, phantoms can yield realistic imaging data to serve as a 'ground truth' from which molecular imaging devices and techniques can be evaluated and improved.

5.1.1 Evolution and types of digital phantoms

Existing phantoms can be divided into two general classes: voxel-based and geometry-based phantoms. Voxel-based phantoms, such as the Hoffman phantom (Hoffman et al. (1990)) and the Zubal phantom (Zubal et al. (1994)) are generally build on patient data. They may include anatomical and functional information from different medical imaging modalities. However, they are fixed to a particular anatomy, so that study of the effects of anatomical variations is limited. Also, they are fixed to a specific resolution so the generation of the phantom at other resolutions requires interpolation.

Geometry-based phantoms, a.k.a. mathematical phantoms, such as the Shepp-Logan phantom (Shepp & Logan (1974)), the NEMA phantom (National Electrical Manufacturers Association (NEMA) (2007)), or the Derenzo/Jaszczak phantom (Budinger et al. (1977)) permit, on the other hand, variations and data generation at multiple resolutions (see fig. 5). Although they are based in fairly simple geometric primitives such as spheres and ellipsoids they have found a widespread use to research new instrumentation, image acquisition strategies, and image processing and reconstruction methods during more than three decades. A slightly more realistic description of anatomical details was achieved with the ellipsoid-based (four-dimensional) 4-D Mathematical Cardiac-Torso (MCAT) phantom. In order to study the effects of patient involuntary motion in ET imaging, models for the beating heart and respiration were developed for the MCAT. These models extended the phantom to a fourth dimension: time. This phantom was made reasonably realistic but was not as realistic as voxel-based phantoms.

A new generation of hybrid phantoms focused on the creation of ideal models that sought to combine the realism of a patient-based voxelized phantom with the flexibility of a mathematical or stylized phantom. The use of rational B-splines (NURBS) as a new flexible mathematical basis allowed to move far beyond simple geometrically based phantoms toward a more ideal phantom combining the advantages of voxelized and mathematical models. Thus, the 4-D NURBS-based Cardiac-Torso (NCAT) phantom, was able to accurately model motion and anatomical variations as well as a mathematical phantom. It was created by including information of different imaging modalities (MRI and CT data) The data slices were

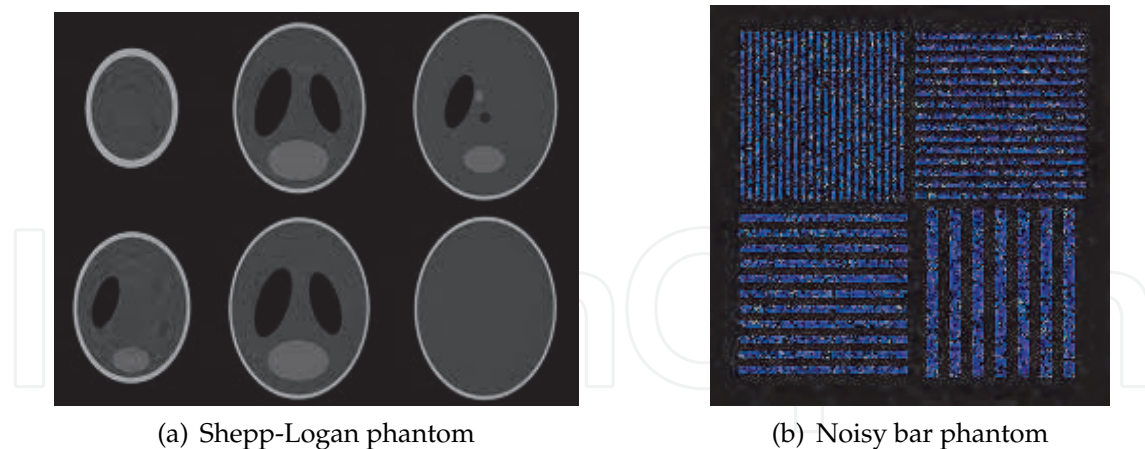


Fig. 5. Examples of geometry-based or mathematical phantoms: (a) Trans-axial slices through a 3D version of the Shepp-Logan phantom (b) Bar phantom with added Poisson noise

manually segmented and co-registered and 3-D NURBS surfaces were fit to each segmented structure using NURBS modeling software to generate an anatomical atlas. Each surface shape can be altered easily via affine and other transformations. The shape is defined by a set of control points which form a convex hull around the surface. To alter the surface, one only has to apply transformations to these control points. With this flexibility, NURBS have the same ability to model anatomical variations and patient motion as a mathematical phantom. Since it was based on actual imaging data, the anatomy of the NCAT is much more realistic than that of the MCAT.

In recent years and following the same guidelines, i.e. the combination of segmented patient data from actual imaging studies data with state-of-the-art computer graphics techniques, more precisely NURBS and subdivision surfaces (SDs), yet more realistic phantoms such as the 4-D extended Cardiac-Torso (XCAT) phantom and the Mouse Whole-Body (MOBY) phantom (Segars et al. (2004), figure 6) have been developed providing a level of realism comparable to that of a voxelized phantom. SDs are capable of modeling smooth surfaces of arbitrary topological type more efficiently, as is the case with complex anatomical structures of the body found in the brain and the interior of the breast. NURBS surfaces can only model such structures by partitioning the model into a collection of individual NURBS surfaces, which introduces a large number of parameters to define the model. SDs, on the contrary, initially represent an object as a coarse polygon mesh. This mesh can be iteratively subdivided and smoothed using a refinement scheme to produce a smooth surface.

With the improved anatomical detail and the extension to new areas, not only torso, the XCAT (with more than nine thousands of anatomical objects modeled over the entire human body) and MOBY phantoms are suitable for other medical imaging applications using nuclear medicine or high-resolution techniques such as CT or MRI. Additionally, these phantoms have the potential to open the door to the rapid development of hundreds of realistic patient-specific 4-D computational models. Such a library of computational models will presumably have widespread use in imaging research to develop, evaluate, and improve imaging devices and techniques and to investigate the effects of anatomy and motion. They will also provide vital tools in radiation dosimetry to estimate patient-specific dose and radiation risk and optimize dose-reduction strategies. For more detailed information on the

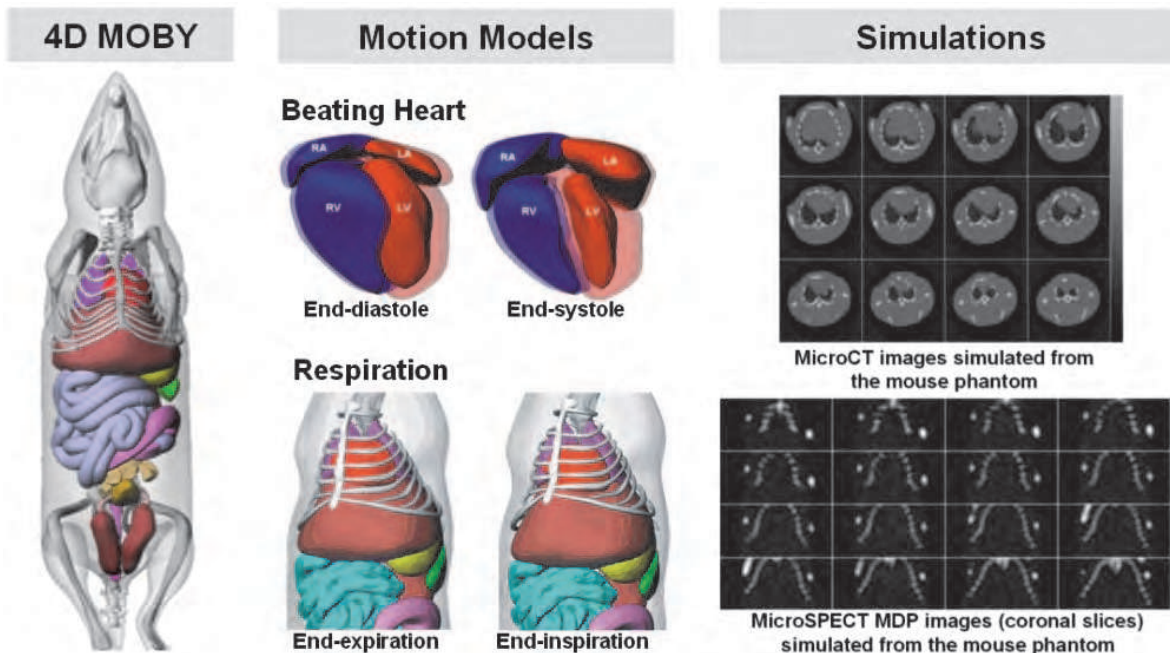


Fig. 6. The 4D MOBY hybrid phantom: (Left) Anterior view of the 4D MOBY phantom. (Middle) Cardiac and respiratory motions of the MOBY phantom. (Right) MicroCT and MicroSPECT images simulated using the phantom

MCAT, NCAT, XCAT and MOBY phantoms the reader may consult Segars & Tsui (2009) and the references therein.

5.1.2 Digital phantom resources

Some useful links to freely available digital phantom resources are the following:

The MC-ET database (Castiglioni et al. (2005)) is an interactive open to the public Internet-published database of MC simulated data for ET. Data can be easily downloaded directly from the web site <http://www.ibfm.cnr.it/mcet/>, after registering as an MC-ET user. Data sets for PET and SPECT include simulated MC data from simple mathematical phantoms, anthropomorphic phantoms as well as some data obtained from real patients where cerebral, thoracic and abdominal regions were considered.

Different versions (CT-based torso, CT-based head, MRI-based high-resolution head phantom) of the Zubal phantom data sets can be downloaded at <http://noodle.med.yale.edu/zubal/>.

The NCAT, XCAT and MOBY phantoms are distributed free-of-charge to academic institutions by emailing the authors. Companies are also welcome to use them, but authors do charge a small licensing fee. Visit the Division of Medical Imaging at Johns Hopkins Medical Institutions web page <http://dmip1.rad.jhmi.edu/xcat/> for more information on how to obtain the phantoms.

The Digimouse phantom (Dogdas et al. (2007)) is available at <http://neuroimage.usc.edu/Digimouse.html>

A detailed list of some computational human phantoms created to date is available in the website <http://www.virtualphantoms.org/phantoms.htm>

5.2 Registration

Registration is the task of aligning or developing correspondences between data. For example, in the medical environment, a CT scan may be aligned with an MRI scan in order to combine the information contained in both. Up to now, this task has renewed importance due to the active research that is taking place in PET/CT and PET/MRI systems.

5.2.1 AIR: Automatic Image Registration

This package (see <http://www.loni.ucla.edu/Software/AIR>) was developed by Robert P. Woods at UCLA as a tool for automated registration of 3D and 2D images within and across subjects and across imaging modalities. The AIR library can easily incorporate automated image registration into site specific programs adapted to any particular need. AIR source code written in C is available to the research community free of charge. The code can be compiled for UNIX, PC or Macintosh platforms. Only source code is available at the website <http://bishopw.loni.ucla.edu/AIR5/> (no executables). The software features:

- Linear spatial transformation models: rigid-body models, global rescaling models, affine models and perspective models. It supports within-modality, across-modality and linear inter-subject registration
- Nonlinear polynomial spatial transformation models ranging from first (linear) to twelfth order

It also includes utilities for re-slicing, re-orienting, re-uniting, resizing and averaging and related and similar tasks.

5.3 Segmentation

Segmentation refers to the process of partitioning a digital image into multiple sets of voxels (segments). More precisely, image segmentation is the process of assigning a label to every voxel in an image such that voxels with the same label share certain visual characteristics. In Medical Imaging, segmentation is typically used to extract organs or body structures of interest from an initial image. Relevant applications include the location of tumors and other pathologies, measuring tissue volumes, computer-guided surgery, diagnosis, treatment planning and study of anatomical structure.

5.3.1 Insight Segmentation and Registration Toolkit (ITK)

ITK (<http://www.itk.org>) is an open-source, cross-platform system that provides developers with an extensive suite of software tools for image analysis. Developed through extreme programming methodologies, ITK employs cutting-edge algorithms for registering and segmenting multidimensional data. ITK uses the CMake build environment to manage the configuration process. The software is implemented in C++ and it is wrapped for Tcl, Python (using CableSwig) and Java. This enables developers to create software using a variety of programming languages. ITK's C++ implementation style is referred to as generic programming (i.e., using templated code). Such C++ templating means that the code is highly

efficient, and that many software problems are discovered at compile-time, rather than at run-time during program execution.

Some technical features of the package include:

- Data representation and algorithms to perform segmentation and registration. The focus is on medical applications; although the toolkit is capable of processing other data types
- Data representations in general form for images and meshes
- The toolkit does not address visualization or graphical user interface. These are left to other toolkits (such as VTK, VisPack, 3DViewnix, MetaImage, etc.)
- The toolkit provides minimal tools for file interface. Again, this is left to other toolkits/libraries to provide
- Multi-threaded (shared memory) parallel processing is supported

The development of the toolkit is based on principles of extreme programming. That is, design, implementation, and testing is performed in a rapid, iterative process.

5.4 Statistical analysis

Statistical analysis on image data has been a rapidly growing field in PET and in other functional imaging modalities such as fMRI with interesting applications to kinetic modeling and activation studies.

5.4.1 Statistical Parametric Mapping (SPM)

Statistical Parametric Mapping refers to the construction and assessment of spatially extended statistical processes used to test hypotheses about functional imaging data. These ideas have been instantiated in software that is called SPM. The SPM software package has been designed for the analysis of brain imaging data sequences. The sequences can be a series of images from different cohorts, or time-series from the same subject. The current release is designed for the analysis of fMRI, PET, SPECT, EEG and MEG.

SPM is made freely available to the neuro-imaging community (<http://www.fil.ion.ucl.ac.uk/spm>), to promote collaboration and a common analysis scheme across laboratories. The software represents the implementation of the theoretical concepts of Statistical Parametric Mapping in a complete analysis package. The SPM software is a suite of MATLAB (The MathWorks, Inc) functions and subroutines with some externally compiled C routines. SPM was written to organize and interpret functional neuroimaging data. SPM is an academic software toolkit for the analysis of functional imaging data, for users familiar with the underlying statistical, mathematical and image processing concepts. It is essential to understand these underlying concepts in order to use the software effectively.

5.4.2 SnPM

The Statistical nonParametric Mapping toolbox, available at <http://www.sph.umich.edu/ni-stat/SnPM>, provides an extensible framework for voxel level non-parametric permutation/randomization tests of functional Neuroimaging experiments with independent observations. The SnPM toolbox provides an alternative to the Statistics section of SPM. SnPM uses the General Linear Model to construct pseudo t-statistic images, which are then assessed for significance using a standard non-parametric multiple comparisons

procedure based on randomization/permutation testing. It is most suitable for single subject PET/SPECT analysis, or designs with low degrees of freedom available for variance estimation. In these situations the freedom to use weighted locally pooled variance estimates, or variance smoothing, makes the non-parametric approach considerably more powerful than conventional parametric approaches, as are implemented in SPM. Further, the non-parametric approach is always valid, given only minimal assumptions.

5.5 Quality assessment

In the area of image reconstruction, researchers often desire to compare two or more reconstruction techniques and assess their relative merits. SNARK09 provides a uniform framework in which to implement algorithms and evaluate their performance. This software is basically a programming system for the reconstruction of 2D images from 1D projections. It is designed to help researchers interested in developing and evaluating reconstruction algorithms. SNARK09 has been designed to treat both parallel and divergent projection geometries and can create test data for use by reconstruction algorithms. A number of frequently used reconstruction algorithms are incorporated. The software can be downloaded at Gabor T. Herman website (<http://www.dig.cs.gc.cuny.edu/software/>)

5.6 Miscellaneous

Some very interesting pieces of free and open source code can be found in the following locations:

- Prof. Jeff Fessler's web page (<http://www.eecs.umich.edu/~fessler/>) at University of Michigan
- Prof. Charles A. Bouman's web page (<https://engineering.purdue.edu/~bouman/>) at Purdue University
- Turku PET Center's web (<http://www.turkupetcentre.net/software/list.php>)
- Louvain La Neuve University web pages (<ftp://ftp.topo.ucl.ac.be/pub/ecat>)

6. Conclusions

A number of relevant free software applications for PET imaging (viewing, reconstruction, system modeling and postprocessing) as well as key references have been reviewed in this chapter suggesting that free software is a highly valuable option in PET imaging clinics and research practice. We also have provided useful links to specific free software packages and data that the reader might consider useful.

7. Acknowledgments

The author wishes to thank UCLA graduate Nichole Marie LaPeer for her contribution in proof reading and editing this chapter's manuscript.

8. References

- Agostinelli, S., Allison, J., Amako, K., Apostolakis, J., Araujo, H., Arce, P., Asai, M., Axen, D., Banerjee, S., Barrand, G. et al. (2003). Geant4-a simulation toolkit, *Nuclear Instruments and Methods in Physics Research-Section A Only* 506(3): 250–303.

- Aguiar, P., Rafecas, M., Ortuño, J., Kontaxakis, G., Santos, A., Pavía, J. & Ros, D. (2010). Geometrical and Monte Carlo projectors in 3D PET reconstruction, *Medical physics* 37: 5691.
- Ahn, S. & Fessler, J. A. (2003). A Globally Convergent Image Reconstruction for Emission Tomography Using Relaxed Ordered Subsets Algorithms, *IEEE Transactions on Medical Imaging* pp. 623–626.
- Alessio, A., Kinahan, P. & Lewellen, T. (2006). Modeling and incorporation of system response functions in 3-D whole body PET, *IEEE Transactions on Medical Imaging* 25(7): 828–837.
- Bai, B., Laforest, R., Smith, A. & Leahy, R. (2005). Evaluation of MAP image reconstruction with positron range modeling for 3D PET, *IEEE Nuclear Science Symposium Conference Record*, Vol. 5, IEEE, pp. 2686–2689.
- Bailey, D. L., Townsend, D. W., Valk, P. E. & Maisey, M. N. (eds) (2005). *Positron Emission Tomography*, Springer.
- Bataille, F. & al. (2004). Monte Carlo simulation for the ECAT HRRT using GATE, *IEEE MIC Conf Records*, Vol. 4, pp. 2570–2574.
- Beisel, T., Lietsch, S. & Thielemans, K. (2008). A method for OSEM PET reconstruction on parallel architectures using STIR, *Nuclear Science Symposium Conference Record, 2008. NSS'08. IEEE*, IEEE, pp. 4161–4168.
- Ben-Tal, A. & Nemirovski, A. (1999). The conjugate barrier method for non-smooth, convex optimization, *Technical Report Research report #5/99*, MINERVA Optimization Center, Faculty of Industrial Engineering and Management, Technion Israel Institute of Technology.
- Bendriem, B. & Townsend, D. W. (eds) (1998). *The Theory and Practice of 3D PET*, Kluwer Academic Publisher, The Netherlands.
- Briesmeister, J. & Los Alamos National Laboratory (1986). *MCNP—A general Monte Carlo code for neutron and photon transport*, Los Alamos National Laboratory.
- Budinger, T., Derenzo, S., Gullberg, G., Greenberg, W. & Huesman, R. (1977). Emission computer assisted tomography with single-photon and positron annihilation photon emitters, *Journal of Computer Assisted Tomography* 1(1): 131.
- Buvat, I. & Castiglioni, I. (2002). Monte Carlo simulations in SPET and PET, *Quarterly Journal of Nuclear Medicine* 46(1): 48–61.
- Buvat, I., Castiglioni, I., Feuardent, J. & Gilardi, M. (2005). Unified description and validation of Monte Carlo simulators in PET, *Physics in Medicine and Biology* 50: 329.
- Castiglioni, I., Buvat, I., Rizzo, G., Gilardi, M., Feuardent, J. & Fazio, F. (2005). A publicly accessible Monte Carlo database for validation purposes in emission tomography, *European Journal of Nuclear Medicine and Molecular Imaging* 32(10): 1234–1239.
- Charlton, M. & Humberston, J. (2000). *Positron physics*, Cambridge Monographs on Atomic, Molecular and Chemical Physics, Cambridge University Press.
- Cherry, S. R., Sorenson, J. A. & Phelps, M. E. (2003). *Physics in Nuclear Medicine*, 3rd edition edn, W. B. Saunders Co.
- Cygwin (2011). Cygwin web, <http://www.cygwin.com/>.
- Daube-Witherspoon, M. E. & Muehllehner, G. (1987). Treatment of axial data in three-dimensional PET, *Journal of Nuclear Medicine* 28: 1717–1724.
- de la Prieta, R. (2004). *Biological and Medical Data Analysis*, Vol. 3337 of *Lecture Notes in Computer Science*, Springer, chapter An accurate and parallelizable geometric projector/backprojector for 3D PET image reconstruction.

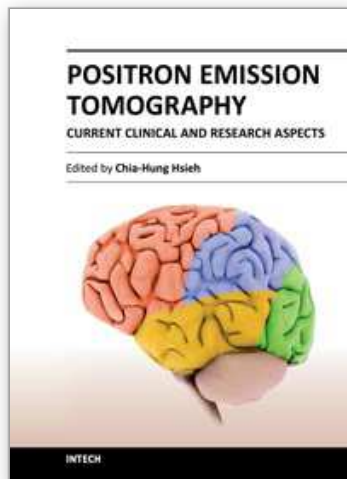
- de la Prieta, R., Hernandez, J., Schiavi, E. & Malpica, N. (2006). Analytical Geometric Model for Photon Coincidence Detection in 3D PET, *IEEE Nuclear Science Symposium Conference Record*, pp. 2229–2232.
- Defrise, M., Kinahan, P. E. & Michel, C. J. (2005). *Positron Emission Tomography*, Springer, chapter Image Reconstruction Algorithms in PET.
- Defrise, M., Kinahan, P., Townsend, D., Michel, C., Sibomana, M. & Newport, D. (1997). Exact and approximate rebinning algorithms for 3-D PET data, *IEEE Transactions on Medical Imaging* 16(2): 145–158.
- Dewaraja, Y., Ljungberg, M. & Koral, K. (2000). Characterization of scatter and penetration using Monte Carlo simulation in ^{131}I imaging, *Journal of Nuclear Medicine: official publication, Society of Nuclear Medicine* 41(1): 123.
- Dogdas, B., Stout, D., Chatziioannou, A. & Leahy, R. (2007). Digimouse: a 3D whole body mouse atlas from CT and cryosection data, *Physics in Medicine and Biology* 52: 577.
- España, S., Herraiz, J., Vicente, E., Vaquero, J., Desco, M. & Udias, J. (2009). PeneloPET, a Monte Carlo PET simulation tool based on PENELOPE: features and validation, *Physics in Medicine and Biology* 54: 1723.
- Fessler, J. (1994). Penalized weighted least-squares image reconstruction for positron emission tomography, *IEEE Transactions on Medical Imaging*.
- Fessler, J. (1997). Users guide for aspire 3d image reconstruction software, *Comm. and Sign. Proc. Lab., Dept. of EECS, Univ. of Michigan, Ann Arbor, MI, Tech. Rep* 310.
- Free Software Foundation (2011). Free Software Foundation Web, <http://www.fsf.org>.
- Frese, T., Rouze, N., Bouman, C., Sauer, K. & Hutchins, G. (2003). Quantitative comparison of FBP, EM, and bayesian reconstruction algorithms, including the impact of accurate system modeling, for the IndyPET scanner, *IEEE Transactions on Medical Imaging* 22(2): 258–276.
- Green, P. J. (1990). Bayesian reconstructions from emission tomography data using a modified EM algorithm, *IEEE Transactions on Medical Imaging* pp. 84–93.
- Herman, G. & Meyer, L. (1993). Algebraic reconstruction techniques can be made computationally efficient [positron emission tomography application], *IEEE Transactions on Medical Imaging* 12(3): 600–609.
- Herraiz, J., Espaa, S., García, S., Cabido, R., Montemayor, A., Desco, M., Vaquero, J. & Udias, J. (2009). GPU acceleration of a fully 3D iterative reconstruction software for PET using CUDA, *Nuclear Science Symposium Conference Record (NSS/MIC), 2009 IEEE*, IEEE, pp. 4064–4067.
- Herraiz, J., Espana, S., Vaquero, J., Desco, M. & Udias, J. (2006). FIRST: Fast iterative reconstruction software for (PET) tomography, *Physics in medicine and biology* 51: 4547.
- Hoffman, E., Cutler, P., Digby, W. & Mazziotta, J. (1990). 3-D phantom to simulate cerebral blood flow and metabolic images for PET, *IEEE Transactions on Nuclear Science* 37(2): 616–620.
- Holdsworth, C., Levin, C., Janecek, M., Dahlbom, M. & Hoffman, E. (2002). Performance analysis of an improved 3-D PET Monte Carlo simulation and scatter correction, *Nuclear Science, IEEE Transactions on* 49(1): 83–89.
- Hudson, M. & Larkin, R. (1994). Accelerated Image Reconstruction using Ordered Subsets of Projection Data, *IEEE Transactions on Medical Imaging* 13: 601–609.
- Huesman, R., Klein, G., Moses, W., Qi, J., Reutter, B. & Virador, P. (2000). List-mode maximum-likelihood reconstruction applied to positron emission mammography (pem) with irregular sampling, *Medical Imaging, IEEE Transactions on* 19(5): 532–537.

- Iriarte, A., Sorzano, C., Carazo, J., Rubio, J. & Marabini, R. (2009). A theoretical model for em-ml reconstruction algorithms applied to rotating pet scanners, *Physics in medicine and biology* 54: 1909.
- Jacobson, M., Levkovitz, R., Ben-Tal, A., Thielemans, K., Spinks, T., Belluzzo, . D., Pagani, E., Bettinardi, V., Gilardi, M. C., Zverovich, A. & Mitra, G. (2000). Enhanced 3D PET OSEM reconstruction using inter-update Metz filtering, *Physics in Medicine and Biology* 45(8): 2417–2439.
- Jan, S. & al. (2005a). Monte Carlo simulation for the ECAT EXACT HR+ system using GATE, *IEEE Transactions on Nuclear Imaging* 52: 627–633.
- Jan, S. & al. (2005b). Monte Carlo simulation of the microPET FOCUS system for small rodents imaging applications, *IEEE Nuclear Science Symposium Conference Record*, Vol. 3, pp. 1653–1657.
- Jan, S., Chatziioannou, A., Comtat, C., Strul, D., Santin, G. & Trébossen, R. (2003). Monte Carlo simulation for the microPET P4 system using GATE, *Molecular Imaging and Biology* 5: 138.
- Jan, S., Morel, C. & al. (2004). GATE: a simulation toolkit for PET and SPECT, *Physics in Medicine and Biology* 49: 4543–4561.
- Johnson, C., Yan, Yan, Y., Carson, R., Martino, R. & Daube-Witherspoon, M. (1995). A system for the 3D reconstruction of retracted-septa PET data using the EM algorithm, *IEEE Transactions on Nuclear Science* 42(4): 1223–1227.
- Jones, M., Yao, R. & Bhole, C. (2006). Hybrid MPI-OpenMP programming for parallel OSEM PET reconstruction, *Nuclear Science, IEEE Transactions on* 53(5): 2752–2758.
- Jordan, T. (1993). Comments on ITS: 'The integrated TIGER series of electron/photon transport codes-Version 3.0' by J.A. Halbleib et al., *Nuclear Science, IEEE Transactions on* 40(1): 71–72.
- Kak, A. & Slaney, M. (1988). *Principles of Computerized Tomographic Imaging*, IEEE Engineering in Medicine and Biology Society, IEEE Press.
- Karuta, B. & Lecomte, R. (1992). Effect of detector weighting functions on the point spread function of high resolution PET tomographs: a simulation study, *IEEE Transactions on Medical Imaging* 11(3): 379–385.
- Kaufman, L. (1993). Maximum likelihood, least squares, and penalized least squares for PET, *IEEE Transactions on Medical Imaging* 12(2): 200–214.
- Kinahan, P. E. & Rogers, J. G. (1989). Analytic 3D Image Reconstruction Using All Detected Events, *IEEE Transactions on Nuclear Science* 36(1): 964–968.
- Lamare, F. & al. (2006). Validation of a Monte Carlo simulation of the Philips Allegro/GEMINI PET systems using GATE, *Phys. Med. Biol.* 51: 943–962.
- Lecomte, R., Schmitt, D. & Lamoureux, G. (1984). Geometry study of a high resolution PET detection system using small detectors, *IEEE Transactions on Nuclear Science* 31(1): 556–561.
- Levin, C. & Zaidi, H. (2007). Current trends in preclinical PET system design, *PET Clinics* 2(2): 125–160.
- Lewellen, T., Harrison, R. & Vannoy, S. (1998). The sSimSET program, *Monte Carlo calculations in nuclear medicine: applications in diagnostic imaging*, M. Ljungberg; SE. Strand, and M. A. King, Eds. Philadelphia: Institute of Physics pp. 77–92.
- Lewitt, R. M., Muehllehner, G. & Karp, J. S. (1994). Three-dimensional reconstruction for PET by multi-slice rebinning and axial image filtering, *Phys. Med. Biol* 39(3): 321–340.

- Lewitt, R. & Matej, S. (2003). Overview of methods for image reconstruction from projections in emission computed tomography, *Proceedings of the IEEE* 91(10): 1588–1611.
- Ljungberg, M. & Strand, S. (1989). A Monte Carlo program for the simulation of scintillation camera characteristics, *Computer methods and programs in biomedicine* 29(4): 257–272.
- Loening, A. & Gambhir, S. (2003). AMIDE: A free software tool for multimodality medical image analysis, *Mol. Imaging* 2(3): 131–137.
- Markiewicz, P., Reader, A., Tamal, M., Julyan, J. & Hastings, D. (2005). An advanced analytic method incorporating the geometrical properties of scanner and radiation emissions into the system model for the true component of 3d pet data, *Nuclear Science Symposium Conference Record, 2005 IEEE*, Vol. 4, IEEE, pp. 2310–2314.
- Merheb, C. & al. (2006). Assessment of the Mosaic animal PET system response using list-mode data for validation of GATE Monte Carlo modelling, *Nuclear Instruments and Methods in Physics Research Section A* 569: 220–224.
- Michel, C. & al. (2006). Influence of crystal material on the performance of the HiRez 3D PET scanner: A Monte-Carlo study, *IEEE Nuclear Science Symposium Conference Record*, Vol. 4, pp. 1528–1531.
- Mumcuoglu, E., Leahy, R., Cherry, S. & Hoffman, E. (1996). Accurate geometric and physical response modelling for statistical image reconstruction in high resolution PET, *IEEE Nuclear Science Symposium, Conference Record*, Vol. 3, IEEE, pp. 1569–1573.
- National Electrical Manufacturers Association (NEMA) (2007). NEMA NU 2-2007 Performance Measurements of Small Animal Positron Emission Tomographs (PETs), available at <http://www.nema.org/stds/nu4.cfm>.
- Nelson, W., Hirayama, H. & Rogers, D. (1985). Egs4 code system, *Technical report*, Stanford Linear Accelerator Center, Menlo Park, CA (USA).
- Ollinger, J. & Goggin, A. (1996). Maximum likelihood reconstruction in fully 3D PET via the SAGE algorithm, *Nuclear Science Symposium, 1996. Conference Record., 1996 IEEE*, Vol. 3, IEEE, pp. 1594–1598.
- Open MPI (2011). Open Source High Performance Computing web, <http://www.open-mpi.org/>.
- OpenGATE Collaboration (2011). OpenGATE Collaboration Webpage, <http://www.opengatecollaboration.org>.
- OpenScience Project (2011). OpenScience Project Web, <http://www.openscience.org/>.
- Ortuño, J., Kontaxakis, G., Rubio, J., Guerra, P. & Santos, A. (2010). Efficient methodologies for system matrix modelling in iterative image reconstruction for rotating high-resolution PET, *Physics in Medicine and Biology* 55: 1833.
- Panin, V., Kehren, F., Michel, C. & Casey, M. (2006). Fully 3-D PET reconstruction with system matrix derived from point source measurements, *IEEE Transactions on Medical Imaging* 25(7): 907–921.
- Phelps, M. E. (ed.) (2006). *PET: Physics, Instrumentation and Scanners*, 1st edn, Springer, Orlando.
- Qi, J. & Huesman, R. (2005). Effect of errors in the system matrix on maximum a posteriori image reconstruction, *Physics in medicine and biology* 50: 3297.
- Qi, J. & Leahy, R. (2006). Iterative reconstruction techniques in emission computed tomography, *Physics in Medicine and Biology* 51(15): R541–R578.
- Qi, J., Leahy, R., Cherry, S., Chatziioannou, A. & Farquhar, T. (1998). High-resolution 3D Bayesian image reconstruction using the microPET small-animal scanner, *Physics in Medicine and Biology* 43: 1001.

- Rafecas, M., Boning, G., Pichler, B., Lorenz, E., Schwaiger, M. & Ziegler, S. (2004). Effect of noise in the probability matrix used for statistical reconstruction of pet data, *Nuclear Science, IEEE Transactions on* 51(1): 149–156.
- Rafecas, M., Mosler, B., Dietz, M., Pogl, M., Stamatakis, A., McElroy, D. & Ziegler, S. (2004). Use of a Monte Carlo-based probability matrix for 3-D iterative reconstruction of MADPET-II data, *IEEE Transactions on Nuclear Science* 51(5): 2597–2605.
- Rahmim, A., Tang, J., Lodge, M., Lashkari, S., Ay, M., Lautamäki, R., Tsui, B. & Bengel, F. (2008). Analytic system matrix resolution modeling in PET: an application to Rb-82 cardiac imaging, *Physics in Medicine and Biology* 53: 5947.
- Rehfeld, N. & Alber, M. (2007). A parallelizable compression scheme for Monte Carlo scatter system matrices in PET image reconstruction, *Physics in Medicine and Biology* 52: 3421.
- Reilhac, A., Lartizien, C., Costes, N., Sans, S., Comtat, C., Gunn, R. & Evans, A. (2004). PET-SORTEO: A Monte Carlo-based simulator with high count rate capabilities, *IEEE Transactions on Nuclear Science* 51(1): 46–52.
- Rorden, C. (2011). MRICRO web pages, <http://www.cabiatl.com/mricro/>.
- Rosset, A., Spadola, L. & Ratib, O. (2004). OsiriX: an open-source software for navigating in multidimensional DICOM images, *Journal of Digital Imaging* 17(3): 205–216.
- Scheins, J., Boschen, F. & Herzog, H. (2006). Analytical calculation of volumes-of-intersection for iterative, fully 3-D PET reconstruction, *IEEE Transactions on Medical Imaging* 25(10): 1363–1369.
- Scheins, J. & Herzog, H. (2008). PET Reconstruction Software Toolkit-PRESTO a novel, universal C++ library for fast, iterative, fully 3D PET image reconstruction using highly compressed, memory-resident system matrices, *Nuclear Science Symposium Conference Record. NSS'08, IEEE*, pp. 4147–4150.
- Schmidtlein, C. & al. (2006). Validation of GATE Monte Carlo simulations of the GE Advance/Discovery LS PET scanners, *Med Phys.* 33(1): 198–208.
- Schmitt, D., Karuta, B., Carrier, C. & Lecomte, R. (1988). Fast point spread function computation from aperture functions in high resolution PET, *IEEE Transactions on Medical Imaging* 7(1): 2–12.
- Segars, W. & Tsui, B. (2009). MCAT to XCAT: The Evolution of 4-D Computerized Phantoms for Imaging Research, *Proceedings of the IEEE* 97(12): 1954–1968.
- Segars, W., Tsui, B., Frey, E., Johnson, G. & Berr, S. (2004). Development of a 4-D digital mouse phantom for molecular imaging research, *Molecular Imaging and Biology* 6(3): 149–159.
- Selivanov, V. V., Picard, Y., Cadorette, J., Rodrigue, S. & Lecomte, R. (2000). Detector response models for statistical iterative image reconstruction in high resolution PET, *IEEE Transactions on Nuclear Science* 47(3): 1168–1175.
- Shepp, L. A. & Vardi, Y. (1982). Maximum likelihood reconstruction for emission tomography, *IEEE Transactions on Medical Imaging* MI-1(2): 113–122.
- Shepp, L. & Logan, B. (1974). The Fourier reconstruction of a head section, *IEEE Trans. Nucl. Sci* 21(3): 21–43.
- Siddon, R. (1985). Fast calculation of the exact radiological path for a three-dimensional ct array, *Medical Physics* 12: 252.
- Soares, E., Germino, K., Glick, S. & Stodilka, R. (2003). Determination of three-dimensional voxel sensitivity for two-and three-headed coincidence imaging, *Nuclear Science, IEEE Transactions on* 50(3): 405–412.
- Stallman, R. (2002). *Free Software, Free Society: Selected Essays of Richard M. Stallman*, Joshua Gay.

- Stickel, J. & Cherry, S. (2005). High-resolution PET detector design: modelling components of intrinsic spatial resolution, *Physics in Medicine and Biology* 50: 179.
- Strul, D., Slates, R. B., Dahlbom, M., Cherry, S. & Marsden, P. (2003). An improved analytical detector response function model for multilayer small-diameter PET scanners, *Physics in Medicine and Biology* 48: 979–994.
- Tamburo, R. J. (2010). Software packages for neuroimage processing, in P. Laughlin (ed.), *Neuroimaging research in geriatric mental health*, Springer Publishing Company, LLC, pp. 85–100.
- Terstegge, A., Weber, S., Herzog, H., Muller-Gartner, H. & Halling, H. (1996). High resolution and better quantification by tube of response modelling in 3d pet reconstruction, *Nuclear Science Symposium, 1996. Conference Record., 1996 IEEE*, Vol. 3, IEEE, pp. 1603–1607.
- The boost libraries (2011). The boost libraries web, <http://www.boost.org>.
- Thielemans, K. & al. (2011). STIR: Software for Tomographic Image Reconstruction, <http://stir.sourceforge.net/>.
- Thielemans, K., Mustafovic, S. & Tsoumpas, C. (2006). STIR: Software for Tomographic Image Reconstruction Release 2, *Proc. IEEE Medical Imaging Conference Medical Imaging Conf., San Diego, CA*, pp. 1603–1607.
- Thompson, C., Moreno-Cantu, J. & Picard, Y. (1992). PETSIM: Monte Carlo simulation of all sensitivity and resolution parameters of cylindrical positron imaging systems, *Physics in Medicine and Biology* 37: 731.
- Tohme, M. & Qi, J. (2009). Iterative image reconstruction for positron emission tomography based on a detector response function estimated from point source measurements, *Physics in medicine and biology* 54: 3709.
- University of Washington, Division of Nuclear Medicine (2006). SimSET: Simulation System for Emission Tomography, http://depts.washington.edu/simset/html/simset_home.html.
- Vandenberghe, S., Staelens, S., Byrne, C., Soares, E., Lemahieu, I. & Glick, S. (2006). Reconstruction of 2D PET data with Monte Carlo generated system matrix for generalized natural pixels, *Physics in Medicine and Biology* 51: 3105.
- Watabe, H. (2011). GpetView website, <http://www.mi.med.osaka-u.ac.jp/gpetview/gpetview.html>.
- Zaidi, H. (1999). Relevance of accurate Monte Carlo modeling in nuclear medical imaging, *Medical Physics* 26: 574–608.
- Zaidi, H. & Koral, K. (2004). Scatter modelling and compensation in emission tomography, *European Journal of Nuclear Medicine and Molecular Imaging* 31(5): 761–782.
- Zhao, H. & Reader, A. (2003). Fast ray-tracing technique to calculate line integral paths in voxel arrays, *Nuclear Science Symposium Conference Record, 2003 IEEE*, Vol. 4, IEEE, pp. 2808–2812.
- Zhou, J. & Qi, J. (2011). Fast and efficient fully 3D PET image reconstruction using sparse system matrix factorization with GPU acceleration, *Physics in Medicine and Biology* 56: 6739.
- Zubal, I., Harrell, C., Smith, E., Rattner, Z., Gindi, G. & Hoffer, P. (1994). Computerized three-dimensional segmented human anatomy, *Medical Physics-Lancaster PA*-21: 299–299.



Positron Emission Tomography - Current Clinical and Research Aspects

Edited by Dr. Chia-Hung Hsieh

ISBN 978-953-307-824-3

Hard cover, 336 pages

Publisher InTech

Published online 08, February, 2012

Published in print edition February, 2012

This book's stated purpose is to provide a discussion of the technical basis and clinical applications of positron emission tomography (PET), as well as their recent progress in nuclear medicine. It also summarizes current literature about research and clinical science in PET. The book is divided into two broad sections: basic science and clinical science. The basic science section examines PET imaging processing, kinetic modeling, free software, and radiopharmaceuticals. The clinical science section demonstrates various clinical applications and diagnoses. The text is intended not only for scientists, but also for all clinicians seeking recent information regarding PET.

How to reference

In order to correctly reference this scholarly work, feel free to copy and paste the following:

Roberto de la Prieta (2012). Free Software for PET Imaging, Positron Emission Tomography - Current Clinical and Research Aspects, Dr. Chia-Hung Hsieh (Ed.), ISBN: 978-953-307-824-3, InTech, Available from: <http://www.intechopen.com/books/positron-emission-tomography-current-clinical-and-research-aspects/free-software-for-pet-imaging>

INTECH
open science | open minds

InTech Europe

University Campus STeP Ri
Slavka Krautzeka 83/A
51000 Rijeka, Croatia
Phone: +385 (51) 770 447
Fax: +385 (51) 686 166
www.intechopen.com

InTech China

Unit 405, Office Block, Hotel Equatorial Shanghai
No.65, Yan An Road (West), Shanghai, 200040, China
中国上海市延安西路65号上海国际贵都大饭店办公楼405单元
Phone: +86-21-62489820
Fax: +86-21-62489821

© 2012 The Author(s). Licensee IntechOpen. This is an open access article distributed under the terms of the [Creative Commons Attribution 3.0 License](#), which permits unrestricted use, distribution, and reproduction in any medium, provided the original work is properly cited.

IntechOpen

IntechOpen